

# World Journal of *Gastrointestinal Surgery*

*World J Gastrointest Surg* 2022 August 27; 14(8): 731-876



**MINIREVIEWS**

- 731 Percutaneous direct endoscopic pancreatic necrosectomy  
*Vyawahare MA, Gulghane S, Titarmare R, Bawankar T, Mudaliar P, Naikwade R, Timane JM*

**ORIGINAL ARTICLE****Case Control Study**

- 743 Factors associated with hypertension remission after gastrectomy for gastric cancer patients  
*Kang B, Liu XY, Cheng YX, Tao W, Peng D*

**Retrospective Cohort Study**

- 754 3D laparoscopic-assisted *vs* open gastrectomy for carcinoma in the remnant stomach: A retrospective cohort study  
*Wu D, Song QY, Li XG, Xie TY, Lu YX, Zhang BL, Li S, Wang XX*
- 765 Nomogram to predict permanent stoma in rectal cancer patients after sphincter-saving surgery  
*Kuo CY, Wei PL, Chen CC, Lin YK, Kuo LJ*

**Retrospective Study**

- 778 Pre-colonoscopy special guidance and education on intestinal cleaning and examination in older adult patients with constipation  
*Wang H, Wang Y, Yuan JH, Wang XY, Ren WX*
- 788 Model established based on blood markers predicts overall survival in patients after radical resection of types II and III adenocarcinoma of the esophagogastric junction  
*Wei ZJ, Qiao YT, Zhou BC, Rankine AN, Zhang LX, Su YZ, Xu AM, Han WX, Luo PQ*
- 799 Over-the-scope-grasper: A new tool for pancreatic necrosectomy and beyond - first multicenter experience  
*Brand M, Bachmann J, Schlag C, Huegle U, Rahman I, Wedi E, Walter B, Möschler O, Sturm L, Meining A*
- 809 Identifying survival protective factors for chronic dialysis patients with surgically confirmed acute mesenteric ischemia  
*Liau SK, Kuo G, Chen CY, Lu YA, Lin YJ, Lee CC, Hung CC, Tian YC, Hsu HH*
- 821 Efficacy of staple line reinforcement by barbed suture for preventing anastomotic leakage in laparoscopic rectal cancer surgery  
*Ban B, Shang A, Shi J*

**Observational Study**

- 833 Early detection of colorectal cancer based on circular DNA and common clinical detection indicators  
*Li J, Jiang T, Ren ZC, Wang ZL, Zhang PJ, Xiang GA*

## CASE REPORT

- 849 Recurrent small bowel obstruction secondary to jejunal diverticular enterolith: A case report  
*Lee C, Menezes G*
- 855 Interventional radiology followed by endoscopic drainage for pancreatic fluid collections associated with high bleeding risk: Two case reports  
*Xu N, Li LS, Yue WY, Zhao DQ, Xiang JY, Zhang B, Wang PJ, Cheng YX, Linghu EQ, Chai NL*

## LETTER TO THE EDITOR

- 862 Sirolimus *vs* tacrolimus: Which one is the best therapeutic option for patients undergoing liver transplantation for hepatocellular carcinoma?  
*Ahmed F, Zakaria F, Enebong Nya G, Mouchli M*
- 867 Statistical proof of *Helicobacter pylori* eradication in preventing metachronous gastric cancer after endoscopic resection in an East Asian population  
*Karbalaei M, Keikha M*
- 874 Risk prediction of common bile duct stone recurrence based on new common bile duct morphological subtypes  
*Saito H, Tada S*

**ABOUT COVER**

Editorial Board Member of *World Journal of Gastrointestinal Surgery*, Junichi Shindoh, MD, PhD, Chief Physician, Division of Hepatobiliary-pancreatic Surgery, Toranomon Hospital, Tokyo 105-8470, Japan. jshindoh@gmail.com

**AIMS AND SCOPE**

The primary aim of *World Journal of Gastrointestinal Surgery* (WJGS, *World J Gastrointest Surg*) is to provide scholars and readers from various fields of gastrointestinal surgery with a platform to publish high-quality basic and clinical research articles and communicate their research findings online.

WJGS mainly publishes articles reporting research results and findings obtained in the field of gastrointestinal surgery and covering a wide range of topics including biliary tract surgical procedures, biliopancreatic diversion, colectomy, esophagectomy, esophagostomy, pancreas transplantation, and pancreatectomy, etc.

**INDEXING/ABSTRACTING**

The WJGS is now abstracted and indexed in Science Citation Index Expanded (SCIE, also known as SciSearch®), Current Contents/Clinical Medicine, Journal Citation Reports/Science Edition, PubMed, PubMed Central, Reference Citation Analysis, China National Knowledge Infrastructure, China Science and Technology Journal Database, and Superstar Journals Database. The 2022 Edition of Journal Citation Reports® cites the 2021 impact factor (IF) for WJGS as 2.505; IF without journal self cites: 2.473; 5-year IF: 3.099; Journal Citation Indicator: 0.49; Ranking: 104 among 211 journals in surgery; Quartile category: Q2; Ranking: 81 among 93 journals in gastroenterology and hepatology; and Quartile category: Q4.

**RESPONSIBLE EDITORS FOR THIS ISSUE**

Production Editor: Rui-Rui Wu, Production Department Director: Xiang Li, Editorial Office Director: Jia-Ru Fan.

**NAME OF JOURNAL**

*World Journal of Gastrointestinal Surgery*

**ISSN**

ISSN 1948-9366 (online)

**LAUNCH DATE**

November 30, 2009

**FREQUENCY**

Monthly

**EDITORS-IN-CHIEF**

Peter Schemmer

**EDITORIAL BOARD MEMBERS**

<https://www.wjgnet.com/1948-9366/editorialboard.htm>

**PUBLICATION DATE**

August 27, 2022

**COPYRIGHT**

© 2022 Baishideng Publishing Group Inc

**INSTRUCTIONS TO AUTHORS**

<https://www.wjgnet.com/bpg/gerinfo/204>

**GUIDELINES FOR ETHICS DOCUMENTS**

<https://www.wjgnet.com/bpg/GerInfo/287>

**GUIDELINES FOR NON-NATIVE SPEAKERS OF ENGLISH**

<https://www.wjgnet.com/bpg/gerinfo/240>

**PUBLICATION ETHICS**

<https://www.wjgnet.com/bpg/GerInfo/288>

**PUBLICATION MISCONDUCT**

<https://www.wjgnet.com/bpg/gerinfo/208>

**ARTICLE PROCESSING CHARGE**

<https://www.wjgnet.com/bpg/gerinfo/242>

**STEPS FOR SUBMITTING MANUSCRIPTS**

<https://www.wjgnet.com/bpg/GerInfo/239>

**ONLINE SUBMISSION**

<https://www.f6publishing.com>



Retrospective Study

# Model established based on blood markers predicts overall survival in patients after radical resection of types II and III adenocarcinoma of the esophagogastric junction

Zhi-Jian Wei, Ya-Ting Qiao, Bai-Chuan Zhou, Abigail N Rankine, Li-Xiang Zhang, Ye-Zhou Su, A-Man Xu, Wen-Xiu Han, Pan-Quan Luo

**Specialty type:** Gastroenterology and hepatology

**Provenance and peer review:**

Unsolicited article; Externally peer reviewed.

**Peer-review model:** Single blind

**Peer-review report's scientific quality classification**

Grade A (Excellent): 0  
Grade B (Very good): 0  
Grade C (Good): C, C, C  
Grade D (Fair): 0  
Grade E (Poor): 0

**P-Reviewer:** Abdellateif MS, Egypt; Tangsuwanaruk T, Thailand

**Received:** February 11, 2022

**Peer-review started:** February 11, 2022

**First decision:** April 19, 2022

**Revised:** April 30, 2022

**Accepted:** August 5, 2022

**Article in press:** August 5, 2022

**Published online:** August 27, 2022



**Zhi-Jian Wei, Bai-Chuan Zhou, Li-Xiang Zhang, A-Man Xu, Wen-Xiu Han, Pan-Quan Luo,** Department of General Surgery, The First Affiliated Hospital of Anhui Medical University, Hefei 230022, Anhui Province, China

**Ya-Ting Qiao,** Department of Gastrointestinal Surgery, Affiliated Hospital of HeBei University, Baoding 071000, Hebei Province, China

**Abigail N Rankine,** Department of Clinical Medicine, Anhui Medical University, Hefei 230032, Anhui Province, China

**Li-Xiang Zhang,** Department of Gastroenterology, Anhui Provincial Key Laboratory of Digestive Disease, The First Affiliated Hospital of Anhui Medical University, Hefei 230022, Anhui Province, China

**Ye-Zhou Su,** Department of Obstetrics and Gynecology, The First Affiliated Hospital of Anhui Medical University, Hefei 230022, Anhui Province, China

**Corresponding author:** Pan-Quan Luo, MM, Surgeon, Department of General Surgery, The First Affiliated Hospital of Anhui Medical University, No. 81 Meishan Road, Shushan District, Hefei 230022, Anhui Province, China. [xamlpqdoctor@163.com](mailto:xamlpqdoctor@163.com)

## Abstract

### BACKGROUND

In recent years, the incidence of types II and III adenocarcinoma of the esophagogastric junction (AEG) has shown an obvious upward trend worldwide. The prognostic prediction after radical resection of AEG has not been well established.

### AIM

To establish a prognostic model for AEG (types II and III) based on routine markers.

### METHODS

A total of 355 patients who underwent curative AEG at The First Affiliated Hospital of Anhui Medical University from January 2014 to June 2015 were retrospectively included in this study. Univariate and multivariate analyses were

performed to identify the independent risk factors. A nomogram was constructed based on Cox proportional hazards models. The new score models was analyzed by C index and calibration curves. The receiver operating characteristic (ROC) curve was used to compare the predictive accuracy of the scoring system and tumor-node-metastasis (TNM) stage. Overall survival was calculated using the Kaplan-Meier curve amongst different risk AEG patients.

## RESULTS

Multivariate analysis showed that TNM stage (hazard ratio [HR] = 2.286,  $P = 0.008$ ), neutrophil-to-lymphocyte ratio (HR = 2.979,  $P = 0.001$ ), and body mass index (HR = 0.626,  $P = 0.026$ ) were independent prognostic factors. The new scoring system had a higher concordance index (0.697), and the calibration curves of the nomogram were reliable. The area under the ROC curve of the new score model (3-year: 0.725, 95% confidence interval [CI]: 0.676-0.777; 5-year: 0.758, 95%CI: 0.708-0.807) was larger than that of TNM staging (3-year: 0.630, 95%CI: 0.585-0.684; 5-year: 0.665, 95%CI: 0.616-0.715).

## CONCLUSION

Based on the serum markers and other clinical indicators, we have developed a precise model to predict the prognosis of patients with AEG (types II and III). The new prognostic nomogram could effectively enhance the predictive value of the TNM staging system. This scoring system can be advantageous and helpful for surgeons and patients.

**Key Words:** Adenocarcinomas of the esophagogastric junction; Neutrophil-to-lymphocyte ratio; Platelet-to-lymphocyte ratio; Prognosis; Tumor-node-metastasis

©The Author(s) 2022. Published by Baishideng Publishing Group Inc. All rights reserved.

**Core Tip:** Based on the serum markers and other clinical indicators, we developed a precise model to predict the prognosis of patients with adenocarcinomas of the esophagogastric junction (types II and III). This scoring system can be advantageous for surgeons and patients.

**Citation:** Wei ZJ, Qiao YT, Zhou BC, Rankine AN, Zhang LX, Su YZ, Xu AM, Han WX, Luo PQ. Model established based on blood markers predicts overall survival in patients after radical resection of types II and III adenocarcinoma of the esophagogastric junction. *World J Gastrointest Surg* 2022; 14(8): 788-798

**URL:** <https://www.wjgnet.com/1948-9366/full/v14/i8/788.htm>

**DOI:** <https://dx.doi.org/10.4240/wjgs.v14.i8.788>

## INTRODUCTION

Adenocarcinomas of the esophagogastric junction (AEG), which are located within 5 cm of the esophagogastric junction, are classified into three subgroups: Types I, II, and III. Type I AEG (adenocarcinoma of the distal esophagus) is most prevalent in Western countries; types II and III AEG are more prevalent than type I in Asia and are mostly treated as gastric cancer[1,2]. The incidence rate of AEG has significantly increased over the past two decades and is increasing more rapidly than any other type of neoplasm[3,4].

Surgery is considered the only curative treatment for patients with AEG; however, the survival rate is not good even with surgery[5].

At present, many studies are exploring non-invasive and sensitive biomarkers that can accurately predict the prognosis of patients with AEG. Among these, carcinoembryonic antigen (CEA) has been used for the early diagnosis of cancer[6]. Cancer-related systemic inflammatory responses, such as the neutrophil-to-lymphocyte ratio (NLR) and platelet-to-lymphocyte ratio (PLR), play an important role in the progression and outcome of tumors[7,8]. Patients with a high NLR have a poor prognosis[9]. Malnutrition is also related with the prognosis of patients; however, few studies have assessed the predictive value of inflammatory, nutritional, and blood tumor markers for overall survival (OS) in patients with AEG (types II and III)[10]. This research established a nomogram to explore the value of blood markers.



## MATERIALS AND METHODS

We collected blood and clinical data of patients with AEG (types II and III) who were hospitalized at the First Affiliated Hospital of Anhui Medical University between January 2014 and June 2015. Patients were analyzed retrospectively according to the inclusion and exclusion criteria. The inclusion criteria were as follows: (1) Patients confirmed with AEG (types II and III) by pathological diagnosis; (2) Radical resection of the tumor; (3) Absence of heart diseases or organ failure; and (4) Peripheral blood test results obtained within 1 wk before surgery. The exclusion criteria were as follows: (1) Previously untreated malignancy; (2) Previously accepted radiation treatment or chemotherapy before the treatment; (3) Presence of certain diseases, such as infection, which could influence the peripheral blood cell counts; (4) Patients who died within 30 d after surgery because of sudden accidents, such as pulmonary embolism; and (5) Patients with incomplete data. In accordance with the inclusion criteria, 440 patients with AEG were included in the study. Finally, a cohort of 355 patients was analyzed based on the exclusion criteria. The patient admission process is shown in [Supplementary Figure 1](#). This study was conducted conforming to the TRIPOD guidelines. This study included 355 patients and the testing group, including 120 patients, who were hospitalized at the First Affiliated Hospital of Anhui Medical University between January 2018 and June 2018.

Data on patients' demographic and clinicopathological features were gathered from the medical records of our hospital, including age, gender, body mass index (BMI), tumor size, differentiation grade, tumor-node-metastasis (TNM) stage, tumor location, surgery time, cancerous node, smoking, and comorbidities. The pathological tumor stage was categorized according to the 7<sup>th</sup> edition of the American Joint Committee on Cancer TNM staging system. The routine laboratory data evaluated were as follows: Neutrophil, lymphocyte, and platelet counts; prealbumin, albumin, hemoglobin, CEA, CA199, and fibrinogen levels.

Peripheral blood tests were performed within 1 wk before surgery, and the following indices were determined: NLR, PLR, and prognostic nutritional index (PNI). The NLR was calculated by dividing the absolute neutrophil count by the absolute lymphocyte count, and the PLR was calculated by dividing the absolute platelet count by the absolute lymphocyte count. The PNI was calculated as serum albumin (g/L) + 5 × total lymphocyte count (10<sup>9</sup>/L)[11]. The NLR, PLR, and PNI were grouped into low and high groups according to the Youden index (maximum [sensitivity + specificity-1])[12]. The BMI (kg/m<sup>2</sup>) was divided into the following three groups: < 18.5 (low group), 18.5-24.9 (normal group), and ≥ 25 (high group). The CEA, CA199, albumin and prealbumin levels were grouped based on their normal values.

All patients with Siewert type II/III AEG underwent radical surgery with celiac and mediastinal lymphadenectomy. All the patients underwent radical D2 lymphadenectomy. They received four to six cycles of first-line adjuvant combination chemotherapy after surgery with oxaliplatin plus 5-fluorouracil/leucovorin or a prodrug of 5-fluorouracil (capecitabine; CapeOX).

### Statistical analysis

Multivariate and univariate survival analyses were performed using the Cox proportional hazard pattern. Harrell's concordance index (C-index) was used in the nomogram to evaluate the model performance for the prognosis of patients with AEG. Calibration and receiver operating characteristic (ROC) curves were used to verify the accuracy of the new scoring system. Survival analysis was compared using Kaplan-Meier method, and the nomogram was constructed using the R package "rms," "Hmisc," "lattice," "Formula," and "foreign." The data are presented using the Statistical Package for the Social Sciences software (16.0 version) and RStudio software (version 1.1.447- 2009-2018; RStudio, Inc.). A *P* value < 0.05 was considered statistically significant.

## RESULTS

The baseline characteristics of 355 patients are presented in [Table 1](#). Overall, 281 (79.1%) male and 74 (20.9%) female patients were included. The median age of the patients was 65 years (range, 29-85 years). The median follow-up period was 52 mo (range, 1.5-72 mo).

[Table 2](#) shows the results of univariate risk factors. Age, prealbumin, TNM stage, tumor size, histological type, CEA, PNI, PLR, NLR, BMI, hemoglobin, and cancerous nodes were significant indicators. The variables with a *P* value < 0.05, as determined by the univariate analysis, were included in the multivariate analysis. Among them, TNM stage (hazard ratio [HR] = 2.286, *P* = 0.008), NLR (HR = 2.979, *P* = 0.001), and BMI (HR = 0.626, *P* = 0.026) were independent prognostic factors ([Table 3](#)).

A model was constructed to predict OS of AEG patients based on the Cox analysis ([Figure 1](#)). Each subgroup variable was assigned a score. A scoring system was used to assign a score to each variable ([Table 4](#)). To apply the nomogram, a vertical line was delineated to indicate the row to assign point values for each variable. Subsequently, the corresponding scores were summed to obtain the total score. Finally, a vertical line from the total point was drawn to obtain the 3-year and 5-year survival probability.

**Table 1 Characteristics of the recruited patients**

Characteristic	Surviving	Dead
Gender		
Male	148 (78.3)	134 (80.7)
Female	41 (21.7)	32 (19.3)
Age (yr)	65.00 (60.00-71.00)	63.00 (59.00-69.25)
Tumor size	5.00 (4.00-7.00)	4.00 (2.50-5.50)
TNM stage		
I-II	49 (25.9)	105 (63.3)
III	140 (74.1)	61 (36.7)
Differentiation grade		
Low	59 (31.2)	70 (42.2)
High	130 (68.8)	96 (57.8)
BMI (kg/m <sup>2</sup> )	21.23 (19.88-23.85)	22.96 (20.96-25.00)
Tumor location		
Siewert II	104 (55.0)	98 (59.0)
Siewert III	85 (45.0)	68 (41.0)
NLR	2.37 (1.61-3.62)	2.20 (1.55-2.86)
PLR	122.75 (87.98-182.94)	108.03 (81.43-152.54)
CEA	3.60 (1.95-9.30)	2.20 (1.44-6.85)
CA199	10.34 (5.64-20.26)	9.88 (5.75-16.88)
PNI	48.80 (45.30-53.15)	50.35 (47.20-53.45)
Albumin	41.60 (38.40-44.80)	42.40 (39.48-44.30)
Prealbumin	187.00 (153.50-234.00)	239.50 (201.75-264.25)
Neutrophil count	3.41 (2.72-4.53)	3.26 (2.38-4.48)
Platelet count	188.00 (143.00-235.50)	176.00 (145.00-219.50)
Lymphocyte count	1.43 (1.10-1.82)	1.63 (1.26-1.97)

Categorical values are expressed as number (percentage), and continuous variable are expressed as median (25<sup>th</sup> percentile and 75<sup>th</sup> percentile). NLR: Neutrophil-to-lymphocyte ratio; PLR: Platelet-to-lymphocyte ratio; BMI: Body mass index; PNI: Prognostic nutritional index; CEA: Carcinoembryonic antigen.

Calibration curves were used to verify the performance of the model in predicting OS of patients with AEG (Figures 2 and 3), and the results showed that the actual OS curve of the nomogram fits the predicted OS curve. Besides, the calibration curve in the testing group for 3-year OS was also good (Figure 4), and the C-index of the model was 0.697 (95% confidence interval [CI]: 0.660-0.734), indicating that this model was reliable. Besides, the area under the ROC curve (AUC) of the new score model (3-year: 0.725, 95%CI: 0.676-0.777; 5-year: 0.758, 95%CI: 0.708-0.807) was larger than that of the TNM stage (3-year: 0.630, 95%CI: 0.585-0.684; 5-year: 0.665, 95%CI: 0.616-0.715) (Figures 5 and 6), which indicated that the constructed nomogram was a reliable scoring system.

In addition, we divided the patients into two groups according to the total nomogram score (low-risk: < 58 and high-risk: ≥ 58) (Figure 7). The results showed that high-risk patients with AEG had a poor prognosis. The Kaplan-Meier curves indicated that the nomogram had excellent results in predicting survival.

## DISCUSSION

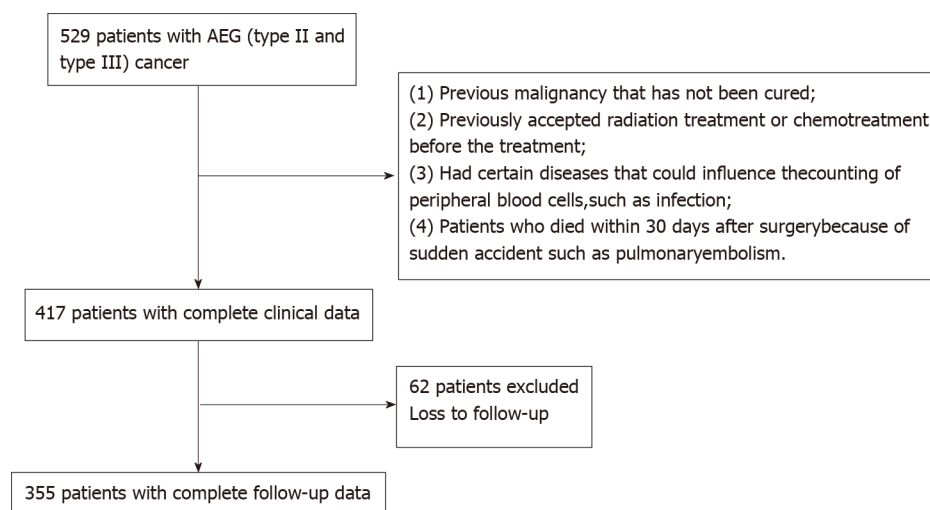
Early detection of AEG is often difficult, owing to the limitations of diagnostic techniques, resulting in a poor prognosis. At present, the 5-year survival rate of patients with AEG is less than 30% [13]. The



**Table 2 Univariate analysis of adenocarcinoma of the esophagogastric junction (types II and III) patients**

Characteristic	Coefficient	HR (95%CI)	P value
Gender (men/ women as reference)	0.078	1.081 (0.765, 1.528)	0.660
Age	0.019	1.019 (1.002, 1.037)	0.031
NLR	0.176	1.193 (1.112, 1.280)	< 0.001
Tumor size	0.178	1.195 (1.134, 1.260)	< 0.001
TNM stage	1.042	2.836 (2.046, 3.930)	< 0.001
Histologic type	0.390	1.477 (1.086, 2.009)	0.013
CA199	0.000	1.000 (0.998, 1.002)	0.948
PNI	-0.034	0.966 (0.940, 0.993)	0.013
PLR	0.003	1.003 (1.001, 1.005)	0.009
Fibrinogen	0.010	1.030 (0.970, 1.095)	0.332
Albumin	-0.289	0.557 (0.479, 1.008)	0.056
Prealbumin	-0.102	0.362 (0.271, 0.484)	< 0.001
Surgery time	0.017	1.017 (0.755, 1.369)	0.912
BMI	-0.580	0.560 (0.431, 0.727)	< 0.001
Cancerous node	0.219	1.245 (1.150, 1.347)	< 0.001
Hemoglobin	-0.006	0.994 (0.988, 1.000)	0.033
Tumor location	0.719	1.127 (0.855, 1.487)	0.397
Smoking	0.006	0.994 (0.970, 1.019)	0.624
Comorbidities	0.017	0.983 (0.953, 1.013)	0.264

NLR: Neutrophil-to-lymphocyte ratio; PLR: Platelet-to-lymphocyte ratio; BMI: Body mass index; PNI: Prognostic nutritional index; CEA: Carcinoembryonic antigen.

**Figure 1 Nomogram for predicting overall survival after curative resection of gastric cancer.**

epidemiology, genetics, spread pattern, and prognosis of neoplasms in the esophagus, esophagogastric junction, and stomach remain unclear. The process of tumor development is complex. Gastroesophageal reflux disease and *Helicobacter pylori* have been reported as risk factors for AEG[14,15]. Therefore, many researchers have made significant contributions to improve the prognosis of AEG. Lymph node metastasis, tumor size, differentiation grade, and TNM stage have been defined as prognostic factors[16, 17]. However, these prognostic factors are difficult to judge before surgery; therefore, research on prognostic serum markers has been widely conducted in recent years. To the best of our knowledge, this

**Table 3** Multivariate analysis of adenocarcinoma of the esophagogastric junction (types II and III) patients

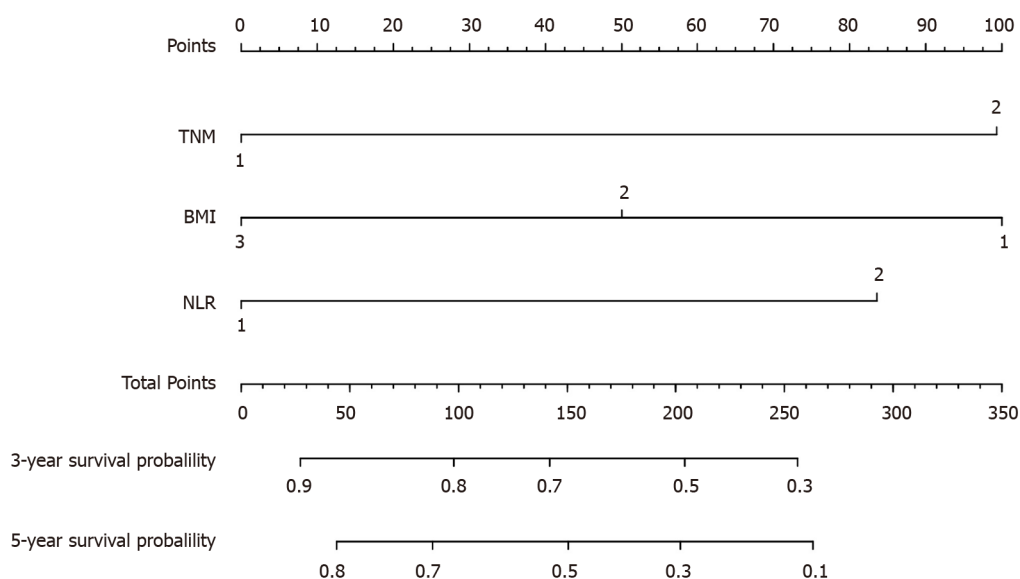
Characteristic	Coefficient	HR (95%CI)	P value
TNM stage	0.827	2.286 (1.236, 4.227)	0.008
BMI	-0.470	0.625 (0.413, 0.946)	0.026
NLR	1.092	2.979 (1.565, 5.674)	0.001
CEA	0.008	1.008 (0.997, 1.019)	0.143
Age	0.031	0.970 (0.556, 1.691)	0.914
Tumor size	0.143	1.154 (0.651, 2.045)	0.624
PNI	0.347	1.415 (0.783, 2.557)	0.250
PLR	0.040	1.041 (0.567, 1.912)	0.897
Hemoglobin	0.197	0.821 (0.479, 1.408)	0.474
Prealbumin	0.122	0.885 (0.496, 1.578)	0.678
Differentiation grade	0.073	1.075 (0.630, 1.836)	0.791
Cancerous node	0.084	1.088 (0.587, 2.016)	0.789

NLR: neutrophil-to-lymphocyte ratio; PLR: Platelet-to-lymphocyte ratio; BMI: Body mass index; PNI: Prognostic nutritional index; CEA: Carcinoembryonic antigen.

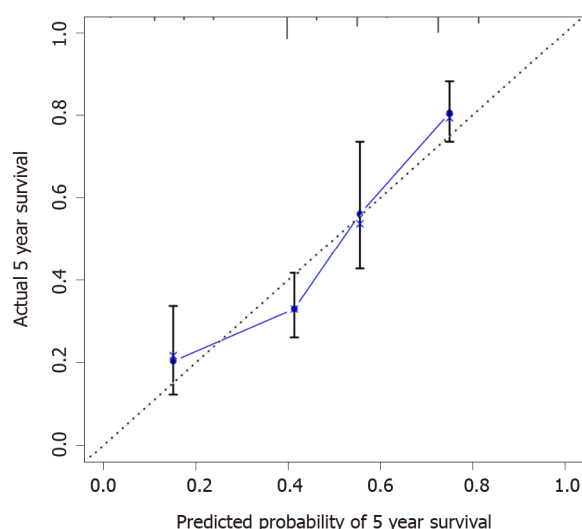
**Table 4** Nomogram scoring system

NLR	Points	TNM stage	Points	BMI	Points
Low (1)	0	I and II (1)	0	Low (1)	0
High (2)	26	III and IV (2)	20	Normal (2)	58
				High (3)	100

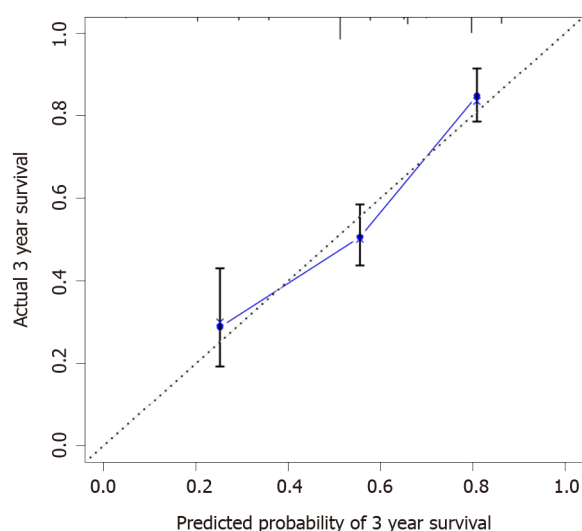
NLR: Neutrophil-to-lymphocyte ratio; BMI: Body mass index.



**Figure 2** Calibration curves of the prognostic nomogram for 3-year overall survival. TNM: Tumor-node-metastasis; BMI: Body mass index; NLR: Neutrophil-to-lymphocyte ratio.



**Figure 3** Calibration curves of the prognostic nomogram for 5-year overall survival.



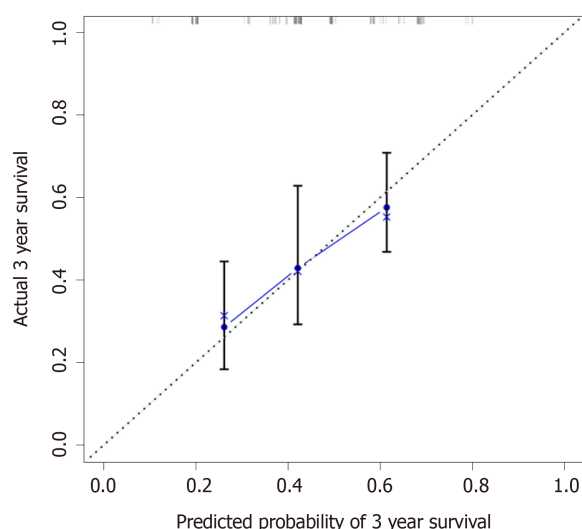
**Figure 4** Calibration curves in the testing group for 3-year overall survival.

study is the first attempt to develop a prognostic nomogram that combines serum markers (including inflammatory markers, nutritional indices, and tumor markers) and clinicopathological characteristics to estimate the 3-year and 5-year survival probability, which was highly accurate in predicting the prognosis of patients with AEG (types II and III).

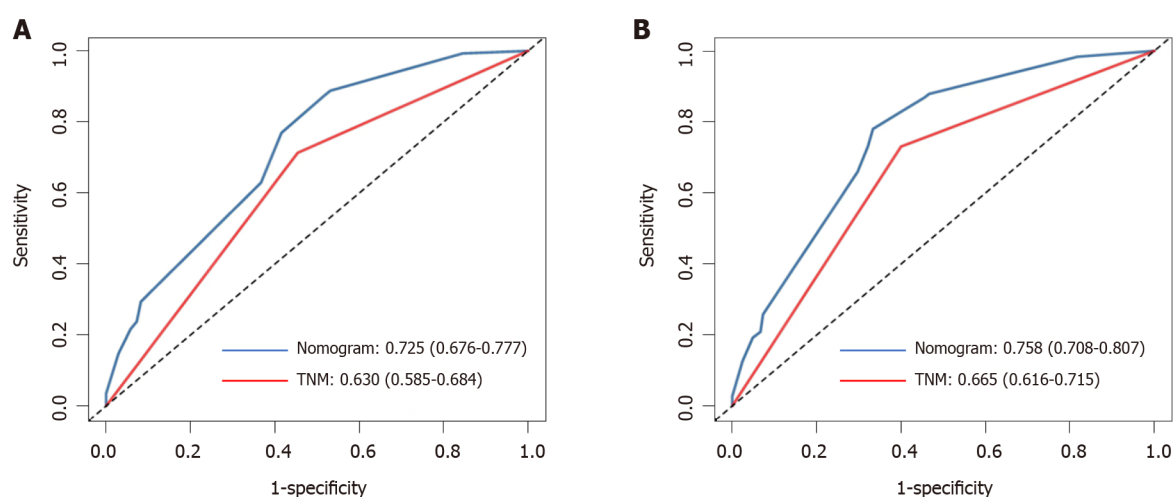
The multivariate analysis revealed that TNM stage, NLR, and BMI were important factors. Therefore, a model was built by these markers. Moreover, the calibration and ROC curves showed that the nomogram was reliable and precise.

In recent years, nomogram has been used to predict the prognosis of many cancers[18,19]. This model has been identified as a new standard that can integrate multiple predictive variables in a weighted manner and intuitively show the influence of variables on individual predictive values. Similar conclusions were obtained in the present study. The AUC of the nomogram was larger than that of TNM stage; therefore, the nomogram and TNM staging system can help in predicting the survival of patients with AEG. Furthermore, this nomogram can be applied in clinical practice to help surgeons evaluate the prognosis of patients and choose appropriate treatment.

Our nomogram contained three variables, and previous studies also got to the same conclusion[9,20]. Inflammatory indexes were related with the prognosis of gastrointestinal cancer patients[21]. This research found that NLR was an independent risk factor, and the possible mechanism is that systemic inflammation caused by tumors can release a large number of pro-inflammatory mediators, such as C-reactive protein, fibrinogen, vascular endothelial growth factor, and transforming growth factor- $\alpha$ . These factors stimulate the process of tumors[22]. Meanwhile, neutrophils could prevent natural killer cells and T cells in the system contacting and killing the tumor cells[23,24]. Therefore, the NLR should be included in the regular assessment index for patients with AEG.



**Figure 5** The receiver operating characteristic curves of the prognostic nomogram and tumor-node-metastasis staging for 3-year overall survival.



**Figure 6** The receiver operating characteristic curves of the prognostic nomogram and tumor-node-metastasis staging for 5-year overall survival.

As an independent prognostic indicator of tumor-related diseases, BMI has raised increasing concerns for researchers in recent years. BMI is related to the prognosis of breast carcinoma, non-small-cell lung cancer, and colorectal cancer, among others[25-27]. In this study, we found that BMI was significantly correlated with the prognosis of patients with AEG. However, the underlying mechanism remains unclear. Patients with AEG with a low BMI may have poor nutritional status and immune function[28]. This may have an adverse effect on disease progression; therefore, these patients may have a shorter OS.

Our research has two potential limitations. First, this study was a single-center study that did not include a sufficient number of cases to verify the results. Second, the included patients who underwent surgical resection for AEG cannot account for all patients with AEG.

## CONCLUSION

TNM stage, NLR, and BMI are risk factors for the prognosis of patients with AEG. The novel nomogram accurately and reliably predicts the OS after radical resection of patients with AEG (types II and III). This may help clinicians formulate personalized treatment plans.

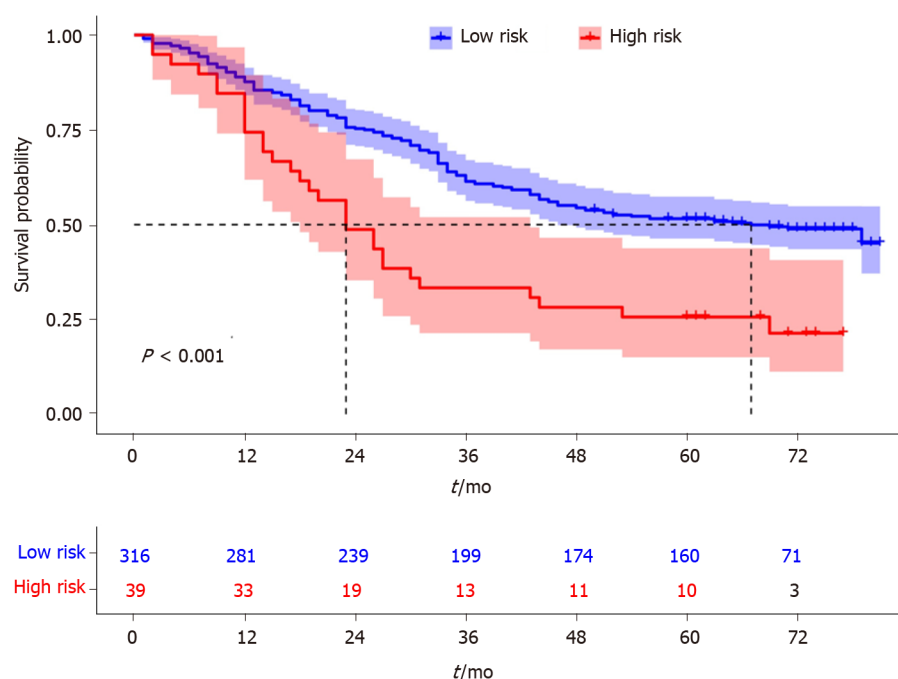


Figure 7 Survival curves stratified by the score calculated by the nomogram (low risk: < 58 and high risk:  $\geq 58$ ).

## ARTICLE HIGHLIGHTS

### Research background

In recent years, the incidence of types II and III adenocarcinoma of the esophagogastric junction (AEG) has shown an obvious upward trend worldwide.

### Research motivation

The prognostic prediction after radical resection of AEG has not been well established.

### Research objectives

To establish a prognostic model for AEG (types II and III) based on routine markers.

### Research methods

The construction of the nomogram was based on Cox proportional-hazards models. The new score model was analyzed by C index and calibration curves. The receiver operating characteristic (ROC) curve was used to compare the predictive accuracy of the scoring system and tumor-node-metastasis (TNM) staging. Overall survival (OS) was calculated using the Kaplan-Meier curve amongst different risk AEG patients.

### Research results

Multivariate analysis showed that TNM stage (hazard ratio [HR] = 2.286,  $P = 0.008$ ), neutrophil-to-lymphocyte ratio (NLR) (HR = 2.979,  $P = 0.001$ ), and body mass index (BMI) (HR = 0.626,  $P = 0.026$ ) were independent prognostic factors. The new scoring system had a higher concordance index (0.697), and the calibration curves of the nomogram were reliable. The area under the ROC curve of the new score model (3-year: 0.725, 95% confidence interval [CI]: 0.676-0.777; 5-year: 0.758, 95%CI: 0.708-0.807) was larger than that of TNM staging (3-year: 0.630, 95%CI: 0.585-0.684; 5-year: 0.665, 95%CI: 0.616-0.715).

### Research conclusions

This model has been identified as a new standard that can integrate multiple predictive variables in a weighted manner and intuitively show the influence of variables on individual predictive values. To the best of our knowledge, this study is the first attempt to develop a prognostic nomogram that combines serum markers (including inflammatory markers, nutritional indices, and tumor markers) and clinicopathological characteristics to estimate the 3-year and 5-year survival probability, which is highly accurate in predicting the prognosis of patients with AEG (types II and III). TNM stage, NLR, and BMI were risk factors for the prognosis of patients with AEG and then a model was built which can predict the prognosis of patients.

## Research perspectives

The novel nomogram accurately and reliably predicts the OS after radical resection of patients with AEG (types II and III). This may help clinicians formulate personalized treatment plans.

## FOOTNOTES

**Author contributions:** Wei ZJ and Qiao YT designed this study and drafted the manuscript, and they contributed to this work equally; Zhou BC collected and organized the data; Abigail NR polished the article; Zhang LX, Su YZ, Xu AM, Han WX, and Luo PQ performed the study and participated in the work; Zhang LX, Su YZ, Xu AM, Han WX, and Luo PQ contributed this work equally, and they are all the corresponding author. All authors read and approved the final manuscript.

**Supported by** the Natural Science Foundation of Anhui Province, No. 2108085QH337.

**Institutional review board statement:** This study was approved by the First Affiliated Hospital of Anhui Medical University.

**Conflict-of-interest statement:** Patients were not required to give informed consent to the study because the analysis used anonymous clinical data that were obtained after each patient agreed to treatment by written consent.

**Data sharing statement:** No additional data are available.

**Open-Access:** This article is an open-access article that was selected by an in-house editor and fully peer-reviewed by external reviewers. It is distributed in accordance with the Creative Commons Attribution NonCommercial (CC BY-NC 4.0) license, which permits others to distribute, remix, adapt, build upon this work non-commercially, and license their derivative works on different terms, provided the original work is properly cited and the use is non-commercial. See: <https://creativecommons.org/licenses/by-nc/4.0/>

**Country/Territory of origin:** China

**ORCID number:** Zhi-Jian Wei 0000-0003-1094-1894; Bai-Chuan Zhou 0000-0002-6288-1400; Abigail N Rankine 0000-0001-6641-9910; Pan-Quan Luo 0000-0002-2828-7061.

**S-Editor:** Wang LL

**L-Editor:** Wang TQ

**P-Editor:** Wu RR

## REFERENCES

- 1 Kumamoto T, Kurahashi Y, Niwa H, Nakanishi Y, Okumura K, Ozawa R, Ishida Y, Shinohara H. True esophagogastric junction adenocarcinoma: background of its definition and current surgical trends. *Surg Today* 2020; **50**: 809-814 [PMID: 31278583 DOI: 10.1007/s00595-019-01843-4]
- 2 Huang Q, Fan X, Agoston AT, Feng A, Yu H, Lauwers G, Zhang L, Odze RD. Comparison of gastro-oesophageal junction carcinomas in Chinese versus American patients. *Histopathology* 2011; **59**: 188-197 [PMID: 21884197 DOI: 10.1111/j.1365-2559.2011.03924.x]
- 3 Keeney S, Bauer TL. Epidemiology of adenocarcinoma of the esophagogastric junction. *Surg Oncol Clin N Am* 2006; **15**: 687-696 [PMID: 17030267 DOI: 10.1016/j.soc.2006.07.014]
- 4 Liu K, Yang K, Zhang W, Chen X, Zhang B, Chen Z, Chen J, Zhao Y, Zhou Z, Chen L, Hu J. Changes of Esophagogastric Junctional Adenocarcinoma and Gastroesophageal Reflux Disease Among Surgical Patients During 1988-2012: A Single-institution, High-volume Experience in China. *Ann Surg* 2016; **263**: 88-95 [PMID: 25647058 DOI: 10.1097/sla.0000000000001148]
- 5 Schröder W, Bruns CJ. [Surgical strategies for carcinoma of the cardia (AEG type II)]. *Chirurg* 2019; **90**: 23 [PMID: 30758569 DOI: 10.1007/s00104-019-0866-8]
- 6 Deng K, Yang L, Hu B, Wu H, Zhu H, Tang C. The prognostic significance of pretreatment serum CEA levels in gastric cancer: a meta-analysis including 14651 patients. *PLoS One* 2015; **10**: e0124151 [PMID: 25879931 DOI: 10.1371/journal.pone.0124151]
- 7 Liu XB, Gao ZY, Zhang QH, Pandey S, Gao B, Yang F, Tong Q, Li SB. Preoperative Neutrophil Lymphocyte Ratio Can Be Used as a Predictor of Prognosis in Patients With Adenocarcinoma of the Esophagogastric Junction: A Systematic Review and Meta Analysis. *Front Oncol* 2020; **10**: 178 [PMID: 32154173 DOI: 10.3389/fonc.2020.00178]
- 8 Chen Y, Jin M, Shao Y, Xu G. Prognostic Value of the Systemic Inflammation Response Index in Patients with Adenocarcinoma of the Oesophagogastric Junction: A Propensity Score-Matched Analysis. *Dis Markers* 2019; **2019**: 4659048 [PMID: 31781301 DOI: 10.1155/2019/4659048]
- 9 Zhang L, Su Y, Chen Z, Wei Z, Han W, Xu A. The prognostic value of preoperative inflammation-based prognostic scores and nutritional status for overall survival in resected patients with nonmetastatic Siewert type II/III adenocarcinoma of esophagogastric junction. *Medicine (Baltimore)* 2017; **96**: e7647 [PMID: 28746229 DOI: 10.1097/md.0000000000007647]



- 10 **Grace EM**, Shaw C, Lalji A, Mohammed K, Andreyev HJN, Whelan K. Nutritional status, the development and persistence of malnutrition and dietary intake in oesophago-gastric cancer: a longitudinal cohort study. *J Hum Nutr Diet* 2018; **31**: 785-792 [PMID: 30033545 DOI: 10.1111/jhn.12588]
- 11 **Park SH**, Lee S, Song JH, Choi S, Cho M, Kwon IG, Son T, Kim HI, Cheong JH, Hyung WJ, Choi SH, Noh SH, Choi YY. Prognostic significance of body mass index and prognostic nutritional index in stage II/III gastric cancer. *Eur J Surg Oncol* 2020; **46**: 620-625 [PMID: 31668977 DOI: 10.1016/j.ejso.2019.10.024]
- 12 **Fluss R**, Faraggi D, Reiser B. Estimation of the Youden Index and its associated cutoff point. *Biom J* 2005; **47**: 458-472 [PMID: 16161804 DOI: 10.1002/bimj.200410135]
- 13 **Hasegawa S**, Yoshikawa T. Adenocarcinoma of the esophagogastric junction: incidence, characteristics, and treatment strategies. *Gastric Cancer* 2010; **13**: 63-73 [PMID: 20602191 DOI: 10.1007/s10120-010-0555-2]
- 14 **Chen XF**, Zhang B, Chen ZX, Hu JK, Dai B, Wang F, Yang HX, Chen JP. Gastric tube reconstruction reduces postoperative gastroesophageal reflux in adenocarcinoma of esophagogastric junction. *Dig Dis Sci* 2012; **57**: 738-745 [PMID: 21953142 DOI: 10.1007/s10620-011-1920-7]
- 15 **Gao P**, Cai N, Yang X, Yuan Z, Zhang T, Lu M, Jin L, Ye W, Suo C, Chen X. Association of Helicobacter pylori and gastric atrophy with adenocarcinoma of the esophagogastric junction in Taixing, China. *Int J Cancer* 2022; **150**: 243-252 [PMID: 34498732 DOI: 10.1002/ijc.33801]
- 16 **Chen J**, Xia YJ, Liu TY, Lai YH, Yu JS, Zhang TH, Ooi S, He YL. Development and validation of a survival nomogram for patients with Siewert type II/III adenocarcinoma of the esophagogastric junction based on real-world data. *BMC Cancer* 2021; **21**: 532 [PMID: 33971833 DOI: 10.1186/s12885-021-08249-x]
- 17 **Zheng C**, Feng X, Zheng J, Yan Q, Hu X, Feng H, Deng Z, Liao Q, Wang J, Li Y. Lymphovascular Invasion as a Prognostic Factor in Non-Metastatic Adenocarcinoma of Esophagogastric Junction After Radical Surgery. *Cancer Manag Res* 2020; **12**: 12791-12799 [PMID: 33364828 DOI: 10.2147/cmar.S286512]
- 18 **Balachandran VP**, Gonen M, Smith JJ, DeMatteo RP. Nomograms in oncology: more than meets the eye. *Lancet Oncol* 2015; **16**: e173-e180 [PMID: 25846097 DOI: 10.1016/s1470-2045]
- 19 **He Y**, Mao M, Shi W, He Z, Zhang L, Wang X. Development and validation of a prognostic nomogram in gastric cancer with hepatitis B virus infection. *J Transl Med* 2019; **17**: 98 [PMID: 30909980 DOI: 10.1186/s12967-019-1841-3]
- 20 **Huang L**, Wei ZJ, Li TJ, Jiang YM, Xu AM. A prospective appraisal of preoperative body mass index in D2-resected patients with non-metastatic gastric carcinoma and Siewert type II/III adenocarcinoma of esophagogastric junction: results from a large-scale cohort. *Oncotarget* 2017; **8**: 68165-68179 [PMID: 28978106 DOI: 10.18632/oncotarget.19251]
- 21 **Gomes de Lima KV**, Maio R. Nutritional status, systemic inflammation and prognosis of patients with gastrointestinal cancer. *Nutr Hosp* 2012; **27**: 707-714 [PMID: 23114934 DOI: 10.3305/nh/2012.27.3.5567]
- 22 **Grivennikov SI**, Greten FR, Karin M. Immunity, inflammation, and cancer. *Cell* 2010; **140**: 883-899 [PMID: 20303878 DOI: 10.1016/j.cell.2010.01.025]
- 23 **Smyth MJ**, Dunn GP, Schreiber RD. Cancer immunosurveillance and immunoediting: the roles of immunity in suppressing tumor development and shaping tumor immunogenicity. *Adv Immunol* 2006; **90**: 1-50 [PMID: 16730260 DOI: 10.1016/s0065-2776]
- 24 **Evani SJ**, Prabhu RG, Gnanaruban V, Finol EA, Ramasubramanian AK. Monocytes mediate metastatic breast tumor cell adhesion to endothelium under flow. *FASEB J* 2013; **27**: 3017-3029 [PMID: 23616566 DOI: 10.1096/fj.12-224824]
- 25 **Vernaci G**, Dieci MV, Manfrin S, Mantiero M, Falci C, Faggioni G, Mioranza E, Menichetti A, Tasca G, Griguolo G, Miglietta F, Di Liso E, Saibene T, Michieletto S, Ghiotto C, Conte P, Guarneri V. BMI is an independent prognostic factor for late outcome in patients diagnosed with early breast cancer: A landmark survival analysis. *Breast* 2019; **47**: 77-84 [PMID: 31357134 DOI: 10.1016/j.breast.2019.07.003]
- 26 **Yendamuri S**, Barbi J, Pabla S, Petrucci C, Punnanitont A, Nesline M, Glenn ST, Depietro P, Papanicalou-Sengos A, Morrison C, Dy GK, Elkin PL. Body Mass Index Influences the Salutary Effects of Metformin on Survival After Lobectomy for Stage I NSCLC. *J Thorac Oncol* 2019; **14**: 2181-2187 [PMID: 31398539 DOI: 10.1016/j.jtho.2019.07.020]
- 27 **Doleman B**, Mills KT, Lim S, Zelhart MD, Gagliardi G. Body mass index and colorectal cancer prognosis: a systematic review and meta-analysis. *Tech Coloproctol* 2016; **20**: 517-535 [PMID: 27343117 DOI: 10.1007/s10151-016-1498-3]
- 28 **Ji F**, Liang Y, Fu S, Chen D, Cai X, Li S, Peng B, Liang L, Hua Y. Prognostic value of combined preoperative prognostic nutritional index and body mass index in HCC after hepatectomy. *HPB (Oxford)* 2017; **19**: 695-705 [PMID: 28479010 DOI: 10.1016/j.hpb.2017.04.008]



Published by **Baishideng Publishing Group Inc**  
7041 Koll Center Parkway, Suite 160, Pleasanton, CA 94566, USA

**Telephone:** +1-925-3991568

**E-mail:** [bpgoffice@wjgnet.com](mailto:bpgoffice@wjgnet.com)

**Help Desk:** <https://www.f6publishing.com/helpdesk>

<https://www.wjgnet.com>

