

# World Journal of *Clinical Cases*

*World J Clin Cases* 2022 July 16; 10(20): 6759-7186



## Contents

Thrice Monthly Volume 10 Number 20 July 16, 2022

## OPINION REVIEW

- 6759 Semaglutide might be a key for breaking the vicious cycle of metabolically associated fatty liver disease spectrum?

*Cigrovski Berkovic M, Rezić T, Bilic-Curcic I, Mrzljak A*

## MINIREVIEWS

- 6769 Drainage of pancreatic fluid collections in acute pancreatitis: A comprehensive overview  
*Bansal A, Gupta P, Singh AK, Shah J, Samanta J, Mandavdhare HS, Sharma V, Sinha SK, Dutta U, Sandhu MS, Kochhar R*

- 6784 Frontiers of COVID-19-related myocarditis as assessed by cardiovascular magnetic resonance

*Luo Y, Liu BT, Yuan WF, Zhao CX*

## ORIGINAL ARTICLE

## Case Control Study

- 6794 Urinary and sexual function changes in benign prostatic hyperplasia patients before and after transurethral columnar balloon dilatation of the prostate

*Zhang DP, Pan ZB, Zhang HT*

- 6803 Effects of the information-knowledge-attitude-practice nursing model combined with predictability intervention on patients with cerebrovascular disease

*Huo HL, Gui YY, Xu CM, Zhang Y, Li Q*

## Retrospective Cohort Study

- 6811 Effects of Kampo medicine hangebyakujutsutemmato on persistent postural-perceptual dizziness: A retrospective pilot study

*Miwa T, Kanemaru SI*

## Retrospective Study

- 6825 Longitudinal changes in personalized platelet count metrics are good indicators of initial 3-year outcome in colorectal cancer

*Herold Z, Herold M, Lohinszky J, Szasz AM, Dank M, Somogyi A*

- 6845 Efficacy of Kegel exercises in preventing incontinence after partial division of internal anal sphincter during anal fistula surgery

*Garg P, Yagnik VD, Kaur B, Menon GR, Dawka S*

## Observational Study

- 6855 Influence of the water jet system vs cavitron ultrasonic surgical aspirator for liver resection on the remnant liver

*Hanaki T, Tsuda A, Sunaguchi T, Goto K, Morimoto M, Murakami Y, Kihara K, Matsunaga T, Yamamoto M, Tokuyasu N, Sakamoto T, Hasegawa T, Fujiwara Y*

- 6865** Critical values of monitoring indexes for perioperative major adverse cardiac events in elderly patients with biliary diseases

*Zhang ZM, Xie XY, Zhao Y, Zhang C, Liu Z, Liu LM, Zhu MW, Wan BJ, Deng H, Tian K, Guo ZT, Zhao XZ*

- 6876** Comparative study of surface electromyography of masticatory muscles in patients with different types of bruxism

*Lan KW, Jiang LL, Yan Y*

### Randomized Controlled Trial

- 6890** Dural puncture epidural technique provides better anesthesia quality in repeat cesarean delivery than epidural technique: Randomized controlled study

*Wang SY, He Y, Zhu HJ, Han B*

### SYSTEMATIC REVIEWS

- 6900** Network pharmacology-based strategy for predicting therapy targets of Sanqi and Huangjing in diabetes mellitus

*Cui XY, Wu X, Lu D, Wang D*

### META-ANALYSIS

- 6915** Endoscopic submucosal dissection for early signet ring cell gastric cancer: A systematic review and meta-analysis

*Weng CY, Sun SP, Cai C, Xu JL, Lv B*

- 6927** Prognostic value of computed tomography derived skeletal muscle mass index in lung cancer: A meta-analysis

*Pan XL, Li HJ, Li Z, Li ZL*

### CASE REPORT

- 6936** Autosomal dominant osteopetrosis type II resulting from a *de novo* mutation in the *CLCN7* gene: A case report

*Song XL, Peng LY, Wang DW, Wang H*

- 6944** Clinical expression and mitochondrial deoxyribonucleic acid study in twins with 14484 Leber's hereditary optic neuropathy: A case report

*Chuenkongkaew WL, Chinkulkitnivat B, Lertrit P, Chirapapaisan N, Kaewsutthi S, Suktitipat B, Mitrpant C*

- 6954** Management of the enteroatmospheric fistula: A case report

*Cho J, Sung K, Lee D*

- 6960** Lower lip recurrent keratoacanthoma: A case report

*Liu XG, Liu XG, Wang CJ, Wang HX, Wang XX*

- 6966** Optic disc coloboma associated with macular retinoschisis: A case report

*Zhang W, Peng XY*

- 6974** A 7-year-old boy with recurrent cyanosis and tachypnea: A case report  
*Li S, Chen LN, Zhong L*
- 6981** Schwannomatosis patient who was followed up for fifteen years: A case report  
*Li K, Liu SJ, Wang HB, Yin CY, Huang YS, Guo WT*
- 6991** Intentional replantation combined root resection therapy for the treatment of type III radicular groove with two roots: A case report  
*Tan D, Li ST, Feng H, Wang ZC, Wen C, Nie MH*
- 6999** Clinical features and genetic variations of severe neonatal hyperbilirubinemia: Five case reports  
*Lin F, Xu JX, Wu YH, Ma YB, Yang LY*
- 7006** Percutaneous transhepatic access for catheter ablation of a patient with heterotaxy syndrome complicated with atrial fibrillation: A case report  
*Wang HX, Li N, An J, Han XB*
- 7013** Secondary positioning of rotationally asymmetric refractive multifocal intraocular lens in a patient with glaucoma: A case report  
*Fan C, Zhou Y, Jiang J*
- 7020** Laparoscopic repair of diaphragmatic hernia associating with radiofrequency ablation for hepatocellular carcinoma: A case report  
*Tsunoda J, Nishi T, Ito T, Inaguma G, Matsuzaki T, Seki H, Yasui N, Sakata M, Shimada A, Matsumoto H*
- 7029** Hypopituitary syndrome with pituitary crisis in a patient with traumatic shock: A case report  
*Zhang XC, Sun Y*
- 7037** Solitary plasmacytoma of the left rib misdiagnosed as angina pectoris: A case report  
*Yao J, He X, Wang CY, Hao L, Tan LL, Shen CJ, Hou MX*
- 7045** Secondary coronary artery ostial lesions: Three case reports  
*Liu XP, Wang HJ, Gao JL, Ma GL, Xu XY, Ji LN, He RX, Qi BYE, Wang LC, Li CQ, Zhang YJ, Feng YB*
- 7054** Bladder perforation injury after percutaneous peritoneal dialysis catheterization: A case report  
*Shi CX, Li ZX, Sun HT, Sun WQ, Ji Y, Jia SJ*
- 7060** Myotonic dystrophy type 1 presenting with dyspnea: A case report  
*Jia YX, Dong CL, Xue JW, Duan XQ, Xu MY, Su XM, Li P*
- 7068** Novel mutation in the *SALL1* gene in a four-generation Chinese family with uraemia: A case report  
*Fang JX, Zhang JS, Wang MM, Liu L*
- 7076** Malignant transformation of primary mature teratoma of colon: A case report  
*Liu J*

- 7082** Treatment of pyogenic liver abscess by surgical incision and drainage combined with platelet-rich plasma: A case report  
*Wang JH, Gao ZH, Qian HL, Li JS, Ji HM, Da MX*
- 7090** Left bundle branch pacing in a ventricular pacing dependent patient with heart failure: A case report  
*Song BX, Wang XX, An Y, Zhang YY*
- 7097** Solitary fibrous tumor of the liver: A case report and review of the literature  
*Xie GY, Zhu HB, Jin Y, Li BZ, Yu YQ, Li JT*
- 7105** MutL homolog 1 germline mutation c.(453+1\_454-1)\_(545+1\_546-1)del identified in lynch syndrome: A case report and review of literature  
*Zhang XW, Jia ZH, Zhao LP, Wu YS, Cui MH, Jia Y, Xu TM*
- 7116** Malignant histiocytosis associated with mediastinal germ cell tumor: A case report  
*Yang PY, Ma XL, Zhao W, Fu LB, Zhang R, Zeng Q, Qin H, Yu T, Su Y*
- 7124** Immunoglobulin G4 associated autoimmune cholangitis and pancreatitis following the administration of nivolumab: A case report  
*Agrawal R, Guzman G, Karimi S, Giulianotti PC, Lora AJM, Jain S, Khan M, Boulay BR, Chen Y*
- 7130** Portal vein thrombosis in a noncirrhotic patient after hemihepatectomy: A case report and review of literature  
*Zhang SB, Hu ZX, Xing ZQ, Li A, Zhou XB, Liu JH*
- 7138** Microvascular decompression for a patient with oculomotor palsy caused by posterior cerebral artery compression: A case report and literature review  
*Zhang J, Wei ZJ, Wang H, Yu YB, Sun HT*
- 7147** Topical halometasone cream combined with fire needle pre-treatment for treatment of primary cutaneous amyloidosis: Two case reports  
*Su YQ, Liu ZY, Wei G, Zhang CM*
- 7153** Simultaneous robot-assisted approach in a super-elderly patient with urothelial carcinoma and synchronous contralateral renal cell carcinoma: A case report  
*Yun JK, Kim SH, Kim WB, Kim HK, Lee SW*
- 7163** Nursing a patient with latent autoimmune diabetes in adults with insulin-related lipodystrophy, allergy, and exogenous insulin autoimmune syndrome: A case report  
*He F, Xu LL, Li YX, Dong YX*
- 7171** Incidental diagnosis of medullary thyroid carcinoma due to persistently elevated procalcitonin in a patient with COVID-19 pneumonia: A case report  
*Saha A, Mukhopadhyay M, Paul S, Bera A, Bandyopadhyay T*
- 7178** Macular hole following phakic intraocular lens implantation: A case report  
*Li XJ, Duan JL, Ma JX, Shang QL*

**LETTER TO THE EDITOR**

- 7184** Is every microorganism detected in the intensive care unit a nosocomial infection? Isn't prevention more important than detection?

*Yildirim F, Karaman I, Yildirim M*



**ABOUT COVER**

Editorial Board Member of *World Journal of Clinical Cases*, Jie-Feng Huang, PhD, Associate Chief Physician, Associate Professor, Department of Orthopaedics and Traumatology, The First Affiliated Hospital of Zhejiang Chinese Medical University, Hangzhou 310006, Zhejiang Province, China. 40983285@qq.com

**AIMS AND SCOPE**

The primary aim of *World Journal of Clinical Cases* (WJCC, *World J Clin Cases*) is to provide scholars and readers from various fields of clinical medicine with a platform to publish high-quality clinical research articles and communicate their research findings online.

WJCC mainly publishes articles reporting research results and findings obtained in the field of clinical medicine and covering a wide range of topics, including case control studies, retrospective cohort studies, retrospective studies, clinical trials studies, observational studies, prospective studies, randomized controlled trials, randomized clinical trials, systematic reviews, meta-analysis, and case reports.

**INDEXING/ABSTRACTING**

The WJCC is now indexed in Science Citation Index Expanded (also known as SciSearch®), Journal Citation Reports/Science Edition, Scopus, PubMed, and PubMed Central. The 2021 Edition of Journal Citation Reports® cites the 2020 impact factor (IF) for WJCC as 1.337; IF without journal self cites: 1.301; 5-year IF: 1.742; Journal Citation Indicator: 0.33; Ranking: 119 among 169 journals in medicine, general and internal; and Quartile category: Q3. The WJCC's CiteScore for 2020 is 0.8 and Scopus CiteScore rank 2020: General Medicine is 493/793.

**RESPONSIBLE EDITORS FOR THIS ISSUE**

Production Editor: Hua-Ge Yin, Production Department Director: Xu Guo, Editorial Office Director: Jin-Lei Wang.

**NAME OF JOURNAL**

*World Journal of Clinical Cases*

**ISSN**

ISSN 2307-8960 (online)

**LAUNCH DATE**

April 16, 2013

**FREQUENCY**

Thrice Monthly

**EDITORS-IN-CHIEF**

Bao-Gan Peng, Jerzy Tadeusz Chudek, George Kontogeorgos, Maurizio Serati, Ja Hyeon Ku

**EDITORIAL BOARD MEMBERS**

<https://www.wjgnet.com/2307-8960/editorialboard.htm>

**PUBLICATION DATE**

July 16, 2022

**COPYRIGHT**

© 2022 Baishideng Publishing Group Inc

**INSTRUCTIONS TO AUTHORS**

<https://www.wjgnet.com/bpg/gerinfo/204>

**GUIDELINES FOR ETHICS DOCUMENTS**

<https://www.wjgnet.com/bpg/gerinfo/287>

**GUIDELINES FOR NON-NATIVE SPEAKERS OF ENGLISH**

<https://www.wjgnet.com/bpg/gerinfo/240>

**PUBLICATION ETHICS**

<https://www.wjgnet.com/bpg/gerinfo/288>

**PUBLICATION MISCONDUCT**

<https://www.wjgnet.com/bpg/gerinfo/208>

**ARTICLE PROCESSING CHARGE**

<https://www.wjgnet.com/bpg/gerinfo/242>

**STEPS FOR SUBMITTING MANUSCRIPTS**

<https://www.wjgnet.com/bpg/gerinfo/239>

**ONLINE SUBMISSION**

<https://www.f6publishing.com>



# Incidental diagnosis of medullary thyroid carcinoma due to persistently elevated procalcitonin in a patient with COVID-19 pneumonia: A case report

Amitabha Saha, Madhusa Mukhopadhyay, Souvik Paul, Arnab Bera, Tapas Bandyopadhyay

**Specialty type:** Medicine, general and internal

**Provenance and peer review:** Unsolicited article; Externally peer reviewed.

**Peer-review model:** Single blind

**Peer-review report's scientific quality classification**

Grade A (Excellent): 0  
Grade B (Very good): 0  
Grade C (Good): C, C  
Grade D (Fair): 0  
Grade E (Poor): 0

**P-Reviewer:** Ata F, Qatar; Tiejun W, China

**A-Editor:** Lin FY

**Received:** February 4, 2022

**Peer-review started:** February 4, 2022

**First decision:** March 23, 2022

**Revised:** April 13, 2022

**Accepted:** May 17, 2022

**Article in press:** May 17, 2022

**Published online:** July 16, 2022



**Amitabha Saha**, Department of Internal Medicine, Critical Care Medicine, Medica Superspecialty Hospital, Kolkata 700099, West Bengal, India

**Madhusa Mukhopadhyay, Tapas Bandyopadhyay**, Department of Internal Medicine, Medica Superspecialty Hospital, Kolkata 700099, West Bengal, India

**Souvik Paul, Arnab Bera**, Department of Critical Care Medicine, Medica Superspecialty Hospital, Kolkata 700099, West Bengal, India

**Corresponding author:** Madhusa Mukhopadhyay, DNB, MRCP, Attending Doctor, Staff Physician, Department of Internal Medicine, Medica Superspecialty Hospital, 127 E M Bypass, Nitai Nagar, Kolkata 700099, West Bengal, India. [madhusa.mukhopadhyay@rediffmail.com](mailto:madhusa.mukhopadhyay@rediffmail.com)

## Abstract

### BACKGROUND

Procalcitonin (Pct) is a common biomarker in clinical practice, especially in the era of coronavirus disease 2019 (COVID-19) infection. Although it is frequently used for the diagnosis and prognostication of bacterial infections or sepsis, it is also elevated in a few other conditions, including medullary thyroid carcinoma (MTC).

### CASE SUMMARY

A 43-year-old female presented with moderately severe COVID-19 pneumonia in April 2021. She gradually recovered clinically; however, despite normalization of other inflammatory markers, Pct levels remained persistently elevated. Further workup identified the cause as left lobe MTC with locoregional metastasis. Calcitonin levels were high, and carcinoembryonic antigen levels were normal. The patient underwent total thyroidectomy and neck dissection, which was followed by another radical neck dissection due to residual disease. Currently, she is doing well, nearly having completed her course of external beam radiotherapy with no recurrence. Pct is well documented as a screening tool for MTC, especially because of its stable nature compared to calcitonin in the community settings. It is important to keep in mind the differential diagnosis of MTC in patients with persistently elevated Pct levels despite normal levels of other acute phase reactants. To the best of our knowledge, this is the first report from Asia of such an incidental diagnosis of MTC due to persistently elevated Pct levels in a patient with severe acute respiratory syndrome coronavirus 2 (SARS-CoV-2) infection.



## CONCLUSION

Persistently elevated Pct levels can occur in any pro-inflammatory state including infections, sepsis, or acute respiratory distress syndrome. In the current setting, SARS-CoV-2 infection is one such clinical scenario, and in rare situations of persistent elevation, MTC may need to be ruled out.

**Key Words:** COVID-19; Medullary thyroid carcinoma; Procalcitonin; SARS-COV-2; Calcitonin; Case report

©The Author(s) 2022. Published by Baishideng Publishing Group Inc. All rights reserved.

**Core Tip:** Procalcitonin (Pct) is a biomarker used very commonly for infections in our clinical practice. It is routinely used in coronavirus disease 2019-infected patients. In this setting, persistent Pct elevation despite normalization of other inflammatory markers may present a diagnostic dilemma. This case highlights the importance of identifying occult medullary thyroid carcinoma in such situations, which would otherwise have been missed and left untreated. In our patient, this led to proper treatment and a successful outcome.

**Citation:** Saha A, Mukhopadhyay M, Paul S, Bera A, Bandyopadhyay T. Incidental diagnosis of medullary thyroid carcinoma due to persistently elevated procalcitonin in a patient with COVID-19 pneumonia: A case report. *World J Clin Cases* 2022; 10(20): 7171-7177

**URL:** <https://www.wjgnet.com/2307-8960/full/v10/i20/7171.htm>

**DOI:** <https://dx.doi.org/10.12998/wjcc.v10.i20.7171>

## INTRODUCTION

Over the last 2 years, coronavirus disease 2019 (COVID-19) has emerged as a global pandemic affecting millions of people. National healthcare systems have been stretched to their limits. In many countries, critical care teams have been overwhelmed by the pandemic, with high requirements for ventilators and life support machines[1-3]. During the course of this disease, several inflammatory biomarkers are commonly elevated and provide a prognostic assessment of the clinical course. Procalcitonin (Pct) is a common biomarker used in clinical practice and is found at extremely low levels in healthy individuals. It is commonly used to distinguish bacterial infections from other causes of infection or inflammation[4, 5].

In the absence of systemic inflammation caused by bacterial infection, Pct is synthesized by thyroid neuroendocrine cells and is a precursor of calcitonin (Ctn). Some studies have advocated the use of Pct levels as a screening tool in the diagnosis and follow-up of medullary thyroid carcinoma (MTC)[6-8]. This is especially true because Pct is easier to measure at the community level[9]. In patients with systemic inflammatory responses, elevated Pct levels are common in clinical practice. In our experience, Pct levels often correlate with the severity and outcomes of patients infected with severe acute respiratory syndrome coronavirus 2[10,11].

Herein, we present a case of occult MTC diagnosed because of a persistently elevated Pct level in a patient with COVID-19 pneumonia.

## CASE PRESENTATION

### Chief complaints

A 43-year-old woman presented with fever associated with a dry cough for 10 d in April 2021.

### History of present illness

She complained of mild respiratory distress, and her peripheral capillary oxygen saturation (SpO<sub>2</sub>) recorded at home was 88%-89%. Three days earlier, she was diagnosed with reverse transcription-polymerase chain reaction confirmed COVID-19.

### History of past illness

She did not have any significant comorbidities, except for polycystic ovarian disease.

### Personal and family history

No significant family history or personal history was present.

### Physical examination

On presentation, the patient had a blood pressure of 140/90 mmHg, pulse rate of 88 beats/min, respiratory rate of 20 breaths/min, and SpO<sub>2</sub> of 92% in room air. Lung examination revealed a bilateral decrease in air entry.

### Laboratory examinations

Initial blood investigations revealed a total leucocyte count of 11650 cells/ $\mu$ L (neutrophils 88% and lymphocytes 8%) (normal: 4000-11000 cells/ $\mu$ L), C-reactive protein (CRP) of 16.44 mg/L (normal: < 10 mg/L), Pct of 9.52 ng/mL (normal: < 0.1 ng/mL), lactate dehydrogenase of 282 IU/L (normal: 105-333 IU/L), ferritin of 158 ng/mL (normal: males: 12-300 ng/mL; females: 12-150 ng/mL), D-dimer of 775.84 ng/mL (normal: < 500 ng/mL), interleukin-6 of 18.55 pg/mL (normal: 0-7 pg/mL), and slightly elevated liver enzymes. Electrolyte and renal function test results were normal. Arterial blood gas analysis confirmed severe hypoxia with an arterial oxygen partial pressure of 39.0 mmHg (normal: 75-100 mmHg).

### Imaging examinations

High-resolution computed tomography (CT) of the chest confirmed atypical viral infection with approximately 50% lung involvement with a CT severity index (CTSI) score of 18/25 (COVID-19 Reporting and Data System 5/5). The patient was placed on a non-rebreather mask with 15 L/min of oxygen, to which she maintained 100% oxygen saturation. Echocardiography revealed no cardiac issues with an ejection fraction of 60%.

### Clinical course and further diagnostic work-up

She underwent chest physiotherapy and incentive spirometry. She was started on a course of intravenous (IV) remdesivir, IV dexamethasone, oral doxycycline, low molecular weight heparin, multivitamins, antibiotics, and appropriate nebulization. Over the next 7 d, she gradually improved, and her oxygen requirement decreased. Chest CT was repeated on day 8, and the CTSI score was 12/25. On day 12, she was weaned off oxygen, and all reports normalized except the Pct level, which was persistently elevated (Table 1, Figure 1). Since she was clinically stable, she was subsequently discharged with a plan of investigating the persistently elevated Pct level on an outpatient basis.

Due to persistently elevated Pct level on follow-up, with no other clinical signs of infection, she was evaluated for other possible causes of elevated Pct. The neck examination results were unremarkable. Ultrasonography of the neck, however, revealed a 15.7 mm  $\times$  15 mm nodule in the left lobe of the thyroid gland, and fine-needle aspiration cytology (FNAC) confirmed a malignant epithelial neoplasm (The Bethesda System for Reporting Thyroid Cytopathology VI). FNAC of the left supraclavicular node confirmed metastatic carcinoma. The Ctn level was 406 pg/mL (normal: < 10 pg/mL). Carcinoembryonic antigen (CEA) was not elevated. Positron emission tomography-CT (PET-CT) confirmed the presence of a well-defined inhomogeneously enhancing fluorodeoxyglucose-avid (maximum standardized uptake value: 4.8) nodule in the left lobe of the thyroid gland measuring 18 mm  $\times$  13 mm with no evidence of distant spread (Figure 2).

## FINAL DIAGNOSIS

A final diagnosis of MTC was confirmed in a patient with COVID-19 pneumonia and persistently elevated Pct.

## TREATMENT

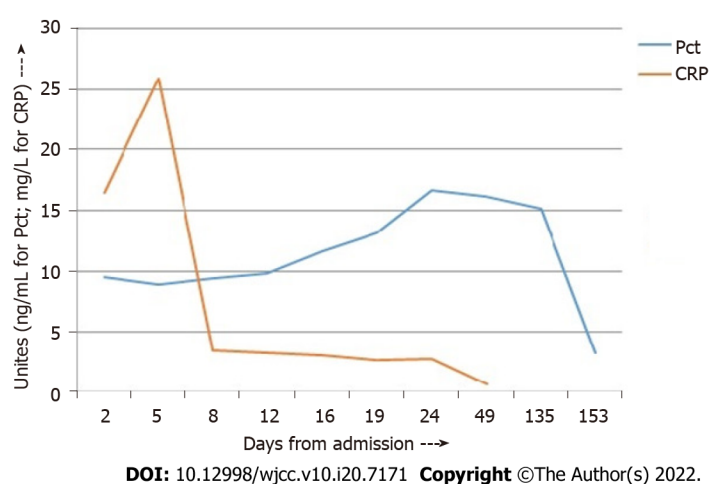
The initial surgery was performed in July 2021 and comprised total thyroidectomy and central lymph node dissection. The left lobe contained a single nodule measuring 3 cm  $\times$  2 cm  $\times$  1.5 cm. The right lobe and isthmus were unremarkable. Histological examination confirmed the presence of MTC with lymphovascular invasion. Eleven of the fourteen lymph nodes examined were positive from the neck dissection (American Joint Committee on Cancer stage III, pT<sub>2</sub>N<sub>1</sub>M<sub>0</sub>).

Postoperatively, due to persistently elevated Ctn (189 pg/mL), a PET-CT scan was repeated, and she was advised to undergo a second radical neck dissection, wherein six positive nodes out of 16 lymph nodes were successfully removed. Subsequently, the Pct and Ctn levels dropped to 3.54 ng/mL and 14 pg/mL, respectively. Multiple endocrine neoplasia type II (MEN-2) syndrome was ruled out due to negative family history, relevant normal laboratory parameters, and negative Rearranged during Transfection (RET) gene mutation analysis.

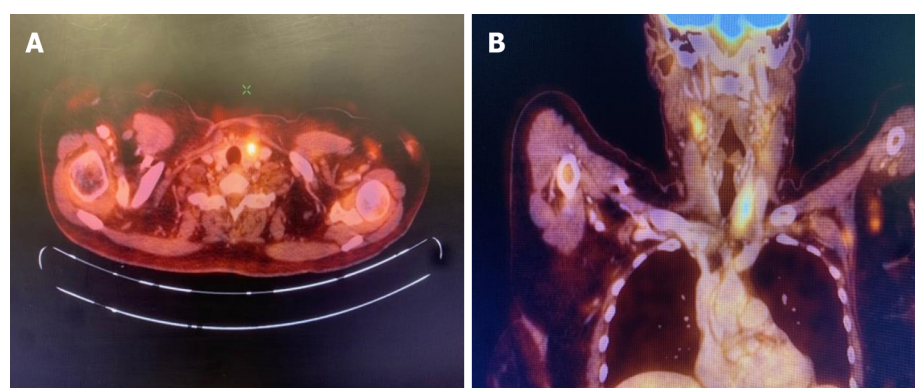
**Table 1** Serial measurements while hospitalized and first follow-up of white blood cell count, procalcitonin, C-reactive protein, and D-dimer levels

Day from admission	WBC, cells/ $\mu$ L	Pct, ng/mL	CRP, mg/L	D-dimer, ng/mL
2	11650	9.52	16.44	775.84
5	4690	8.94	25.92	890.35
8	8070	9.42	3.52	
12	12400	9.82	3.31	456.61
16	8240	11.6	3.08	
19 (Discharge)		13.1	2.71	
24	3720	16.69	2.77	0.14
50	5850	16.21	0.67	

CRP: C-reactive protein; Pct: Procalcitonin; WBC: White blood cell count.



**Figure 1** Graph of procalcitonin vs C-reactive protein during admission and procalcitonin drop postoperatively (she was operated at 140 d since her first admission). Procalcitonin measured in ng/mL; C-reactive protein in mg/L. Pct: Procalcitonin; CRP: C-reactive protein.



**Figure 2** Axial (A) and coronal (B) sections of positron emission tomography-computed tomography showing positive uptake of fluorodeoxyglucose in the left lobe of the thyroid gland.

## OUTCOME AND FOLLOW-UP

Six months have elapsed since her first surgery. She is currently doing well and is on 150 mcg/d levothyroxine supplementation with a successful external beam radiotherapy (EBRT) regimen without

**Table 2 Differential diagnoses of increased procalcitonin**

Bacterial infection or sepsis
Medullary thyroid carcinoma
Acute respiratory disease syndrome
Pulmonary neuroendocrine hyperplasia
Aspiration pneumonia
Small cell or non-small cell cancer of the lung
Carcinoid tumor
Other neuroendocrine tumors
Breast cancer

any current evidence of recurrence.

## DISCUSSION

This is an unusual presentation of an incidental diagnosis of MTC in a patient with COVID-19 pneumonia. In this patient, serum Pct levels remained persistently high despite normalization of the remaining acute phase reactants, which led to subsequent investigation and diagnosis. Eventually, this allowed the patient to receive complete treatment, which would otherwise not have been possible. Thus, a high Pct combined with normal CRP or other indicators of sepsis warrants a differential diagnosis of MTC.

The workup of MTC includes measurement of serum Ctn, CEA, ultrasonography of the neck, PET-CT, appropriate genetic testing for *RET* mutations, and evaluation of other tumors related to MEN-2 syndrome[12]. In our patient, the Ctn level was elevated, while the CEA level was normal. Ultrasonography revealed locoregional disease, and PET-CT and mammography ruled out distant metastasis. MEN-2 syndrome was ruled out based on history, biochemical parameters, and negative *RET* mutation analysis. FNAC confirmed the diagnosis, and successful surgery was performed, followed by postoperative EBRT, as indicated.

Ctn is a hormone produced by the parafollicular cells of the thyroid gland and is therefore used as a marker for MTC. Ctn is present in multiple heterogeneous forms and is synthesized from a prohormone, Pct. Pct is a 116-amino acid prohormone comprising three peptides, and its subsequent enzymatic processing produces Ctn as a byproduct[13]. Some of the differential diagnoses of increased Ctn precursors in the blood (including Pct) are summarized in Table 2.

Azevedo *et al*[14] evaluated the concordance between Ctn and Pct values in 41 patients with MTC and concluded that they were strongly correlated with each other. Machens *et al*[9] studied 457 patients with MTC and concluded that serum Pct could potentially replace Ctn as a screening biomarker, especially in a community setting, because the samples did not need to be kept frozen or on ice. Unlike Ctn, Pct is a very stable protein with a concentration-independent *in vivo* half-life of 20-24 h[7]. Karagiannis *et al*[8] performed a systematic review of Pct as an MTC marker. Among the 15 studies (including three case reports) assessed, the suggestion was that Pct was a useful biomarker, with an acceptable cut-off of 0.1 ng/mL in everyday clinical practice. Ctn was considered the best primary biomarker, with Pct as an adjunct, per clinical indication. Giovanella *et al*[6] reviewed 2705 patients with thyroid nodules and concluded that the Pct level was a sensitive and accurate method of screening for MTC.

The sensitivity and specificity of Ctn for the diagnosis of MTC are high (> 90%), whereas they are much lower for Pct, as seen in Table 2[15-18]. Hence, while Pct, a much more stable compound, may be more useful as a screening test at the community level, Ctn remains the best diagnostic screening tool for MTC[7]. However, because Pct is a more common investigation in a hospital setting due to its varied usefulness, there are some reports of MTC diagnosis due to elevated Pct. In the context of COVID-19 infection, two isolated case reports have been reported in Europe[19,20]. To the best of our knowledge, this is the first report from Asia of an incidental diagnosis of MTC due to persistently elevated Pct. Our patient was diagnosed with a locoregional disease which was successfully operated on and is currently doing well.

## CONCLUSION

In conclusion, it is important to consider the differential diagnosis of MTC in patients with persistently

elevated Pct despite normal levels of other acute phase reactants. This can occur in any pro-inflammatory state, including infection, sepsis, or acute respiratory distress syndrome. In the current setting, COVID-19 infection is a clinical scenario where Pct elevation is common, and in rare situations of persistent elevation, MTC may need to be ruled out.

## FOOTNOTES

**Author contributions:** Saha A, Paul S, and Bandyopadhyay T took care of the patient; Amitabha Saha A and Mukhopadhyay M conceived the idea for the study; Mukhopadhyay M, Paul S, and Bera A conducted the research and data collection; Mukhopadhyay M, Saha A, Bera A, and Bandyopadhyay T drafted, proofread, and formatted the manuscript; All authors issued final approval for the version to be submitted.

**Informed consent statement:** Informed written consent was obtained from the patient for the publication of this report and any accompanying images.

**Conflict-of-interest statement:** The authors declare that they have no conflicts of interest.

**CARE Checklist (2016) statement:** The authors have read the CARE Checklist (2016), and the manuscript was prepared and revised according to the CARE Checklist (2016).

**Open-Access:** This article is an open-access article that was selected by an in-house editor and fully peer-reviewed by external reviewers. It is distributed in accordance with the Creative Commons Attribution NonCommercial (CC BY-NC 4.0) license, which permits others to distribute, remix, adapt, build upon this work non-commercially, and license their derivative works on different terms, provided the original work is properly cited and the use is non-commercial. See: <https://creativecommons.org/licenses/by-nc/4.0/>

**Country/Territory of origin:** India

**ORCID number:** Amitabha Saha 0000-0002-0101-2236; Madhusa Mukhopadhyay 0000-0001-6236-6874; Souvik Paul 0000-0003-0836-6659; Arnab Bera 0000-0002-3387-3428; Tapas Bandyopadhyay 0000-0003-3094-8532.

**S-Editor:** Ma YJ

**L-Editor:** Filipodia

**P-Editor:** Ma YJ

## REFERENCES

- 1 **World Health Organization.** WHO Coronavirus (COVID-19) Dashboard. [cited April 1, 2022]. Available online: <https://covid19.who.int/>
- 2 **Badulak J,** Antonini MV, Stead CM, Shekardemian L, Raman L, Paden ML, Agerstrand C, Bartlett RH, Barrett N, Combes A, Lorusso R, Mueller T, Ogino MT, Peek G, Pellegrino V, Rabie AA, Salazar L, Schmidt M, Shekar K, MacLaren G, Brodie D; ELSO COVID-19 Working Group Members. Extracorporeal Membrane Oxygenation for COVID-19: Updated 2021 Guidelines from the Extracorporeal Life Support Organization. *ASAIO J* 2021; **67**: 485-495 [PMID: 33657573 DOI: 10.1097/MAT.0000000000001422]
- 3 **Carbonell R,** Urgelés S, Rodríguez A, Bodí M, Martín-Loeches I, Solé-Violán J, Díaz E, Gómez J, Treffer S, Vallverdú M, Murcia J, Albaya A, Loza A, Socías L, Ballesteros JC, Papiol E, Viña L, Sancho S, Nieto M, Lorente MDC, Badallo O, Fraile V, Arméstar F, Estella A, Sanchez L, Sancho I, Margarit A, Moreno G; COVID-19 SEMICYUC Working Group. Mortality comparison between the first and second/third waves among 3,795 critical COVID-19 patients with pneumonia admitted to the ICU: A multicentre retrospective cohort study. *Lancet Reg Health Eur* 2021; **11**: 100243 [PMID: 34751263 DOI: 10.1016/j.lanepe.2021.100243]
- 4 **Kamat IS,** Ramachandran V, Eswaran H, Guffey D, Musher DM. Procalcitonin to Distinguish Viral From Bacterial Pneumonia: A Systematic Review and Meta-analysis. *Clin Infect Dis* 2020; **70**: 538-542 [PMID: 31241140 DOI: 10.1093/cid/ciz545]
- 5 **Han J,** Gatheral T, Williams C. Procalcitonin for patient stratification and identification of bacterial co-infection in COVID-19. *Clin Med (Lond)* 2020; **20**: e47 [PMID: 32414743 DOI: 10.7861/clinmed.Let.20.3.3]
- 6 **Giovanella L,** Imperiali M, Piccardo A, Taborelli M, Verburg FA, Daurizio F, Trimboli P. Procalcitonin measurement to screen medullary thyroid carcinoma: A prospective evaluation in a series of 2705 patients with thyroid nodules. *Eur J Clin Invest* 2018; **48**: e12934 [PMID: 29635700 DOI: 10.1111/eci.12934]
- 7 **Algaciras-Schimmich A,** Preissner CM, Theobald JP, Finseth MS, Grebe SK. Procalcitonin: a marker for the diagnosis and follow-up of patients with medullary thyroid carcinoma. *J Clin Endocrinol Metab* 2009; **94**: 861-868 [PMID: 19088163 DOI: 10.1210/jc.2008-1862]
- 8 **Karagiannis AK,** Giron-Fragkoulakis C, Nakouti T. Procalcitonin: A New Biomarker for Medullary Thyroid Cancer? *Anticancer Res* 2016; **36**: 3803-3810 [PMID: 27466480]
- 9 **Machens A,** Lorenz K, Dralle H. Utility of serum procalcitonin for screening and risk stratification of medullary thyroid cancer. *J Clin Endocrinol Metab* 2014; **99**: 2986-2994 [PMID: 24840813 DOI: 10.1210/jc.2014-1278]

- 10 **Hu R**, Han C, Pei S, Yin M, Chen X. Procalcitonin levels in COVID-19 patients. *Int J Antimicrob Agents* 2020; **56**: 106051 [PMID: [32534186](#) DOI: [10.1016/j.ijantimicag.2020.106051](#)]
- 11 **Lippi G**, Plebani M. Procalcitonin in patients with severe coronavirus disease 2019 (COVID-19): A meta-analysis. *Clin Chim Acta* 2020; **505**: 190-191 [PMID: [32145275](#) DOI: [10.1016/j.cca.2020.03.004](#)]
- 12 **Thomas CM**, Asa SL, Ezzat S, Sawka AM, Goldstein D. Diagnosis and pathologic characteristics of medullary thyroid carcinoma-review of current guidelines. *Curr Oncol* 2019; **26**: 338-344 [PMID: [31708652](#) DOI: [10.3747/co.26.5539](#)]
- 13 **Becker KL**, Nylén ES, White JC, Müller B, Snider RH Jr. Clinical review 167: Procalcitonin and the calcitonin gene family of peptides in inflammation, infection, and sepsis: a journey from calcitonin back to its precursors. *J Clin Endocrinol Metab* 2004; **89**: 1512-1525 [PMID: [15070906](#) DOI: [10.1210/jc.2002-021444](#)]
- 14 **Azevedo T**, Martinho M, Martins T, Cunha N, Valido F, Rodrigues F. Procalcitonin: a promising role in medullary thyroid carcinoma? *Endocrine* 2010; **22**: P836
- 15 **Verbeek HH**, de Groot JWB, Sluiter WJ, Muller Kobold AC, van den Heuvel ER, Plukker JT, Links TP. Calcitonin testing for detection of medullary thyroid cancer in people with thyroid nodules. *Cochrane Database Syst Rev* 2020; **3**: CD010159 [PMID: [32176812](#) DOI: [10.1002/14651858.CD010159.pub2](#)]
- 16 **Karges W**. [Calcitonin determination for early diagnosis of medullary thyroid cancer]. *Chirurg* 2010; **81**: 620, 622-626 [PMID: [20549176](#) DOI: [10.1007/s00104-009-1883-9](#)]
- 17 **Niederle MB**, Scheuba C, Riss P, Selberherr A, Koperek O, Niederle B. Early Diagnosis of Medullary Thyroid Cancer: Are Calcitonin Stimulation Tests Still Indicated in the Era of Highly Sensitive Calcitonin Immunoassays? *Thyroid* 2020; **30**: 974-984 [PMID: [32056502](#) DOI: [10.1089/thy.2019.0785](#)]
- 18 **Trimboli P**, Seregini E, Treglia G, Alevizaki M, Giovannella L. Procalcitonin for detecting medullary thyroid carcinoma: a systematic review. *Endocr Relat Cancer* 2015; **22**: R157-R164 [PMID: [25934688](#) DOI: [10.1530/ERC-15-0156](#)]
- 19 **Gianotti L**, D'Agnano S, Pettiti G, Tassone F, Giraudo G, Lauro C, Lauria G, Del Bono V, Borretta G. Persistence of Elevated Procalcitonin in a Patient with Coronavirus Disease 2019 Uncovered a Diagnosis of Medullary Thyroid Carcinoma. *AACE Clin Case Rep* 2021; **7**: 288-292 [PMID: [33997278](#) DOI: [10.1016/j.aace.2021.05.001](#)]
- 20 **Sira L**, Balogh Z, Vitális E, Kovács D, Győry F, Molnár C, Bodor M, Nagy EV. Case Report: Medullary Thyroid Cancer Workup Initiated by Unexpectedly High Procalcitonin Level-Endocrine Training Saves Life in the COVID-19 Unit. *Front Endocrinol (Lausanne)* 2021; **12**: 727320 [PMID: [34707568](#) DOI: [10.3389/fendo.2021.727320](#)]





Published by **Baishideng Publishing Group Inc**  
7041 Koll Center Parkway, Suite 160, Pleasanton, CA 94566, USA

**Telephone:** +1-925-3991568

**E-mail:** [bpgoffice@wjgnet.com](mailto:bpgoffice@wjgnet.com)

**Help Desk:** <https://www.f6publishing.com/helpdesk>

<https://www.wjgnet.com>

