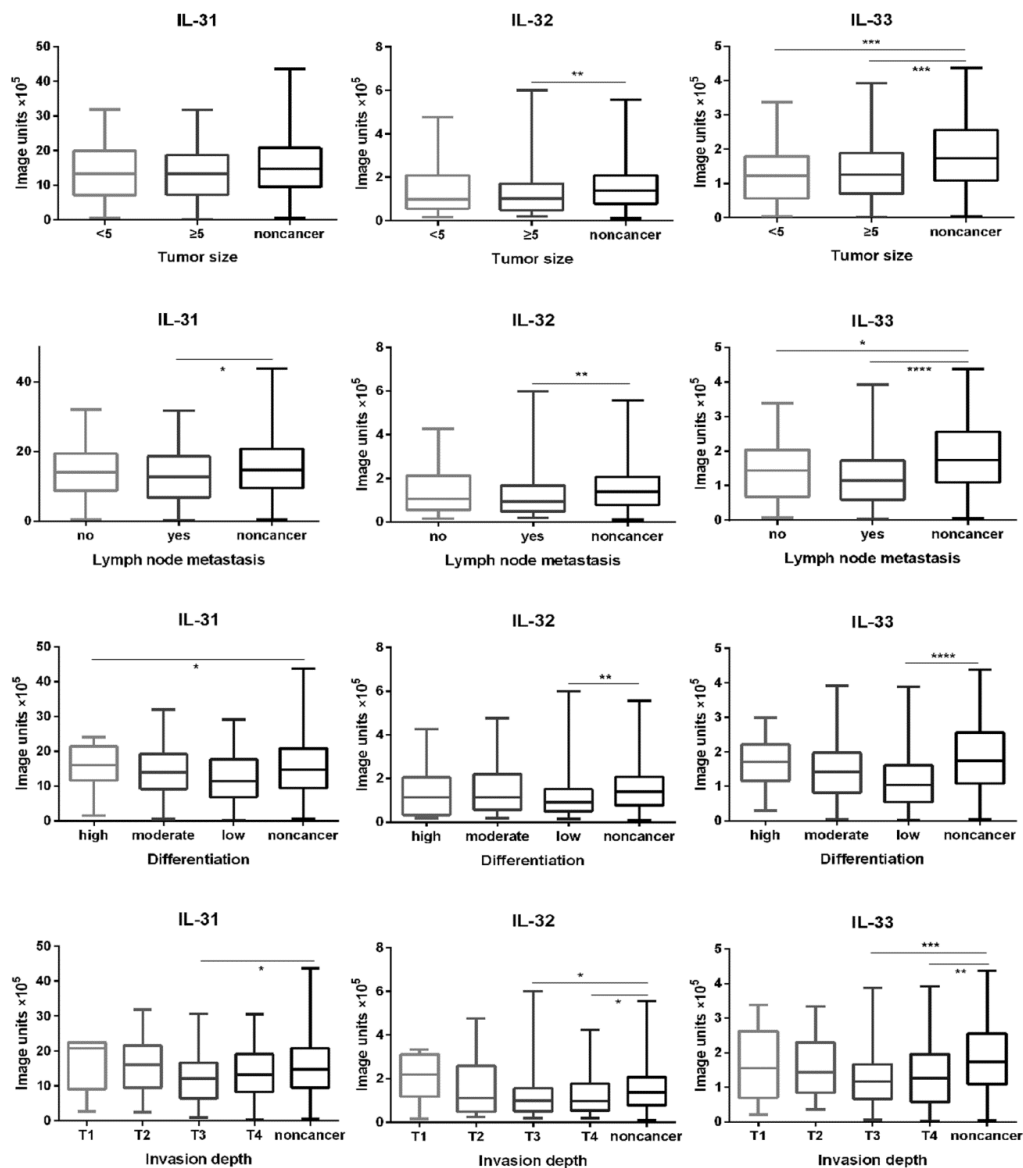
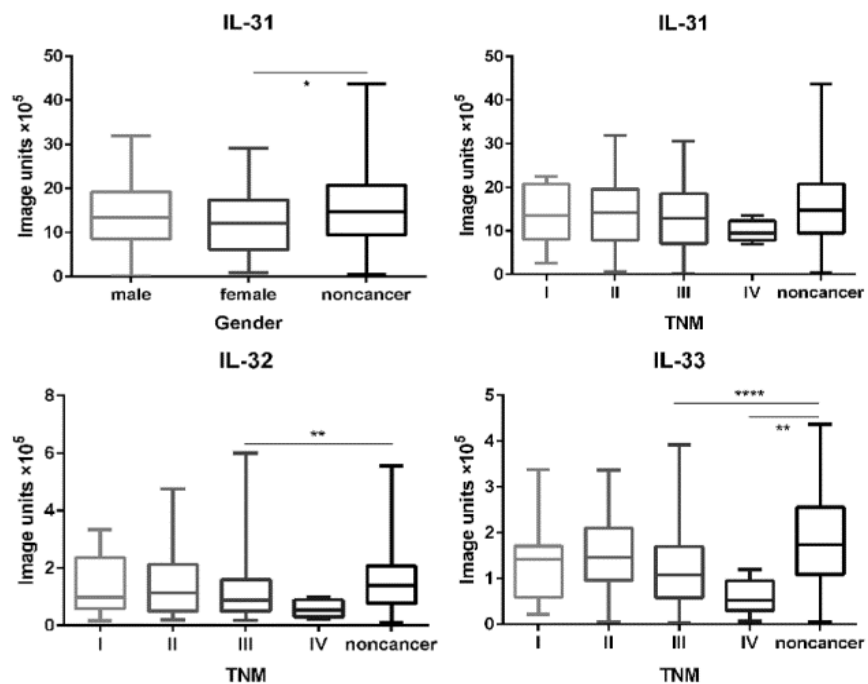


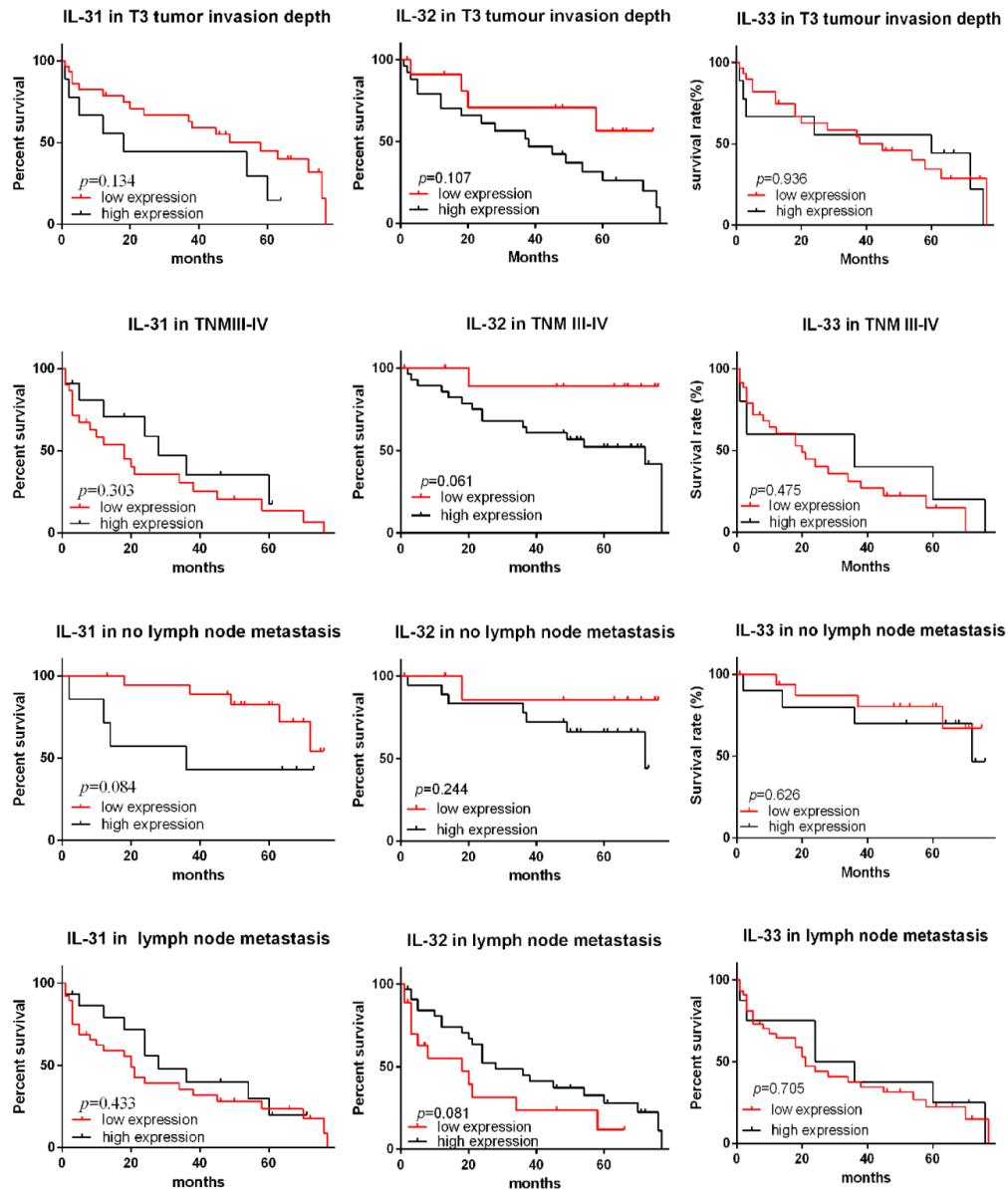
Supplementary Figure 1 Correlation of IL-31, IL-32 and IL-33 expression with clinicopathological parameters of tumour size, lymph node metastasis, tumour differentiation and tumour invasion depth subtypes of GC



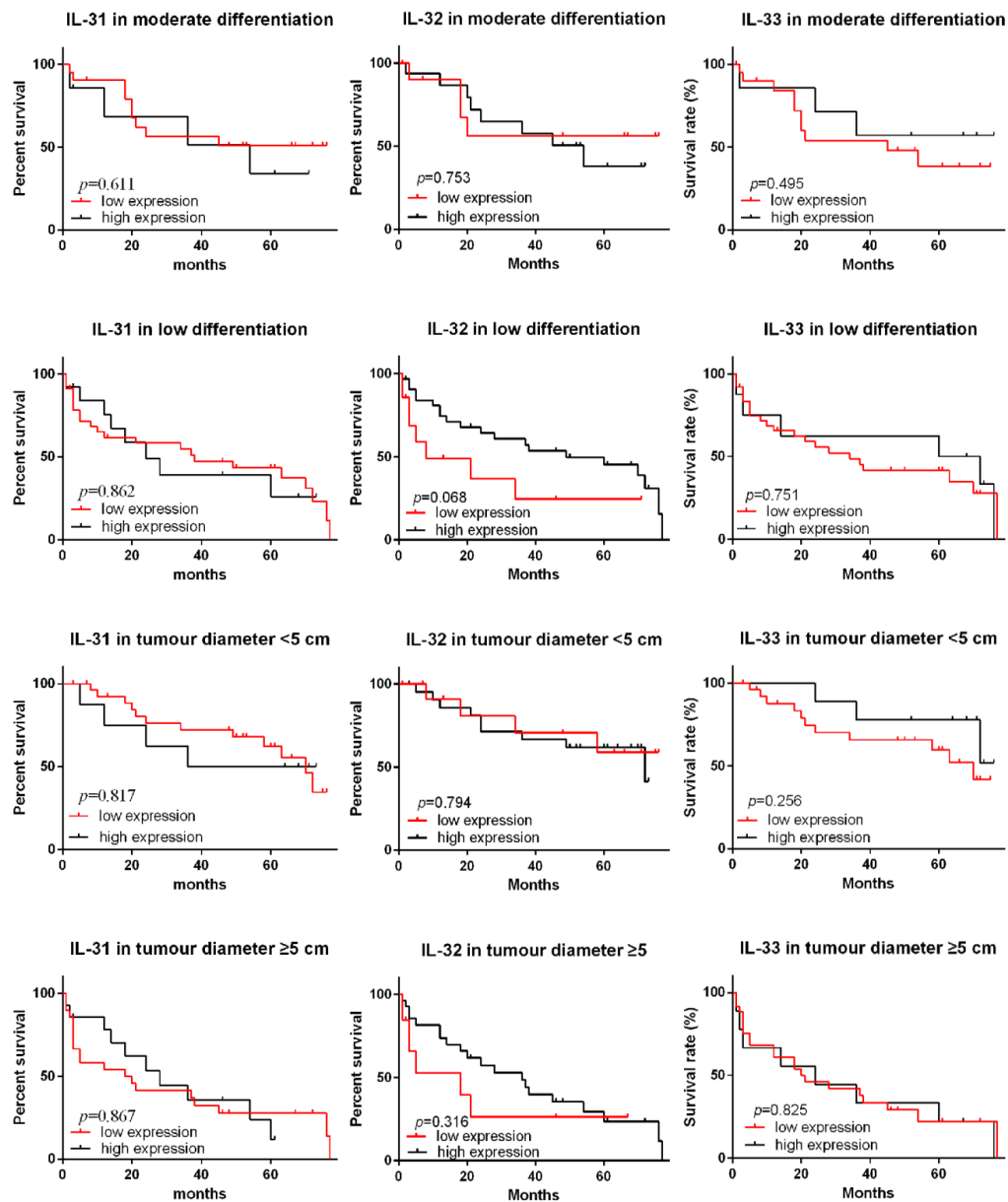
Supplementary Figure 2 Correlation of IL-31, IL-32 and IL-33 expression with clinicopathological parameter of TNM subtype of GC and IL-31 expression with gender subtype of GC



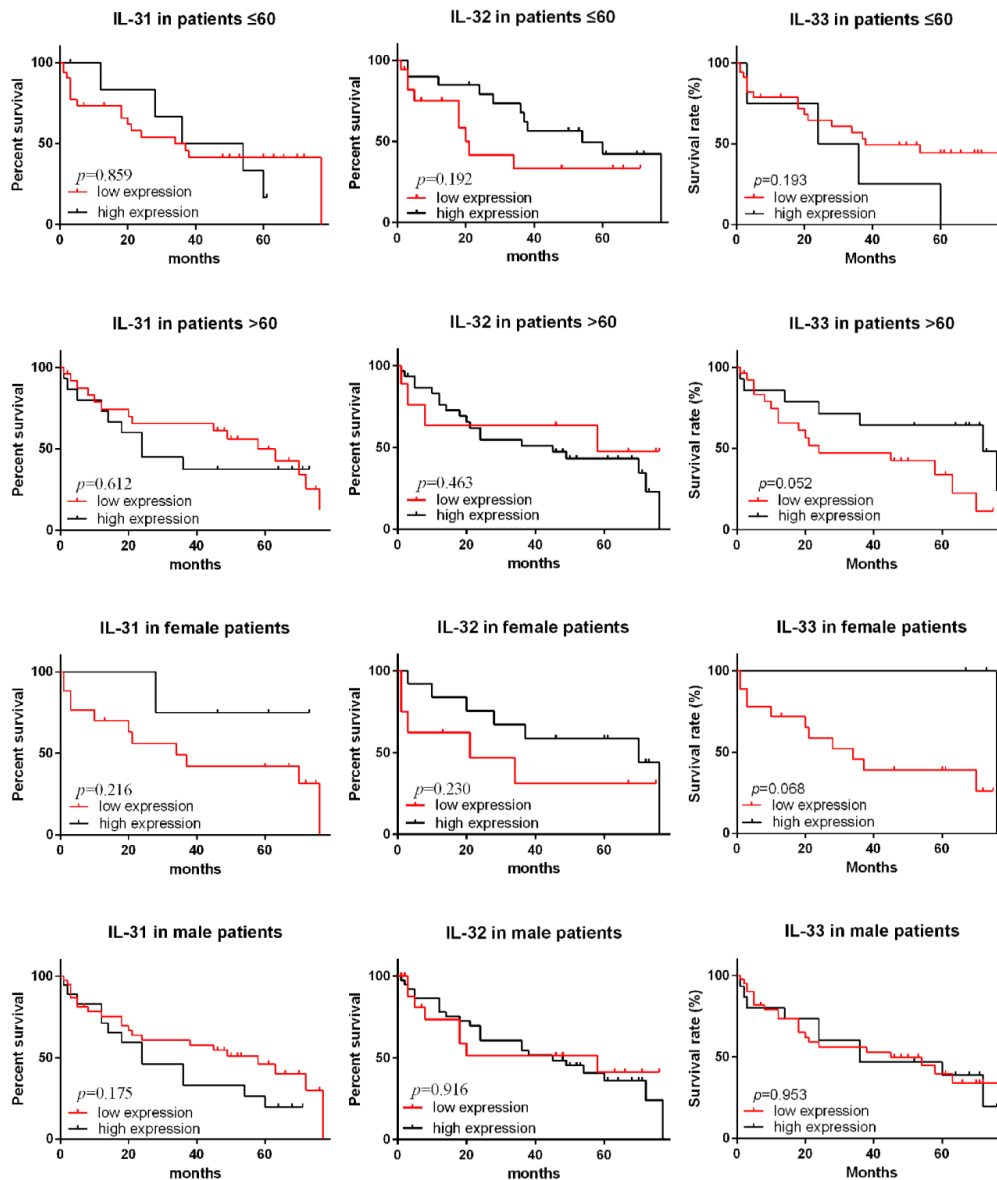
Supplementary Figure 3 Survival analysis of IL-31, IL-32 and IL-33 for prognosis of subtypes of GC patients



Supplementary Figure 4 Survival analysis of IL-31, IL-32 and IL-33 for prognosis of subtypes of GC patients



Supplementary Figure 5 Survival analysis of IL-31, IL-32 and IL-33 for prognosis of subtypes of GC patients



Supplementary Figure 6 Survival analysis of combination of IL-31, IL-32 and IL-33 for prognosis of GC

