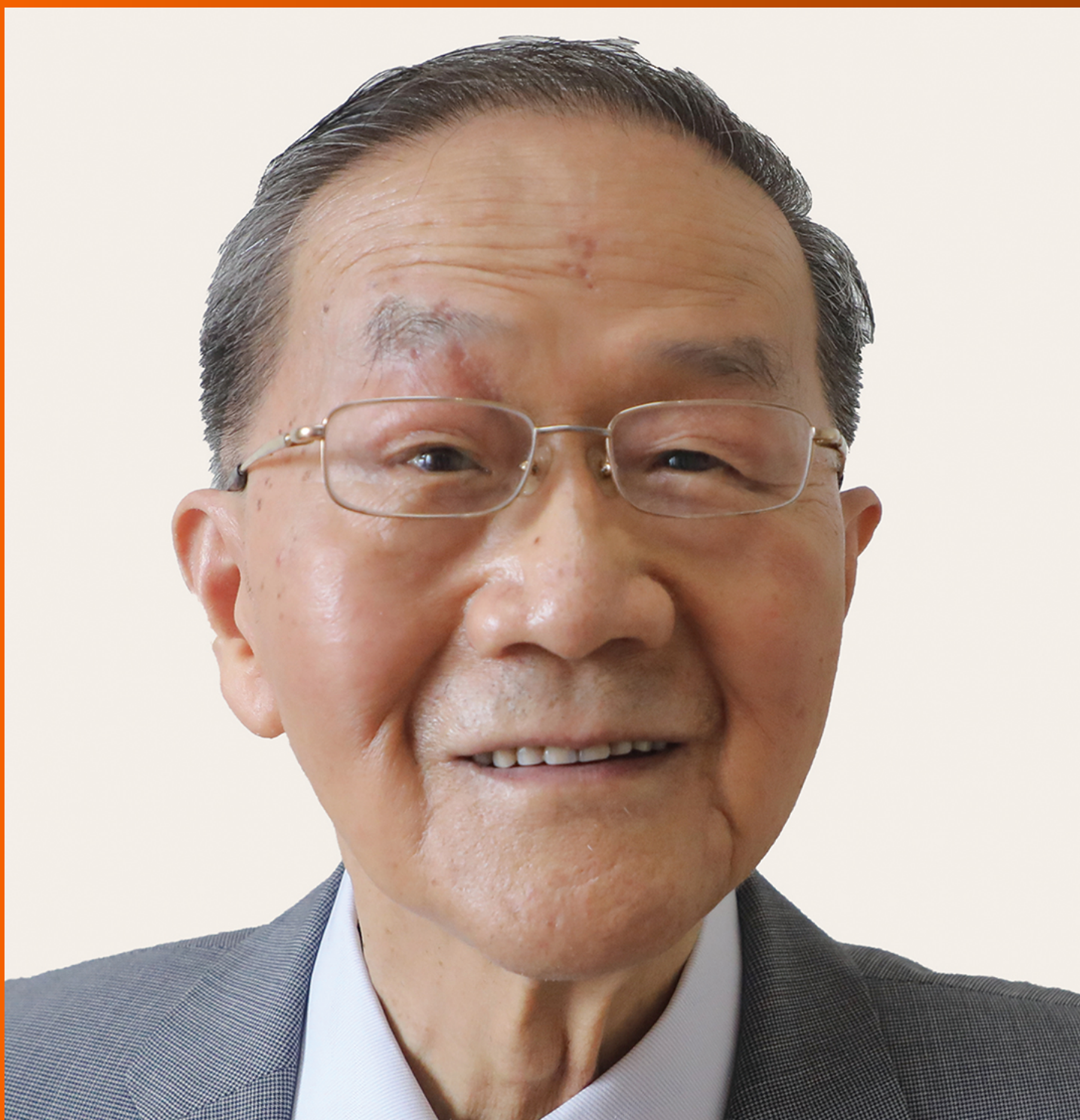


# World Journal of *Gastrointestinal Surgery*

*World J Gastrointest Surg* 2022 September 27; 14(9): 877-1088



### MINIREVIEWS

- 877** Oncologic aspects of the decision-making process for surgical approach for colorectal liver metastases progressing during chemotherapy  
*Araujo RLC, Carvalho CGCY, Maeda CT, Milani JM, Bugano DG, de Moraes PHZ, Linhares MM*
- 887** Research progress on the immune microenvironment of the gallbladder in patients with cholesterol gallstones  
*Jiao JY, Zhu XJ, Zhou C, Wang P*

### ORIGINAL ARTICLE

#### Retrospective Study

- 896** Central pancreatectomy for benign or low-grade malignant pancreatic tumors in the neck and body of the pancreas  
*Chen YW, Xu J, Li X, Chen W, Gao SL, Shen Y, Zhang M, Wu J, Que RS, Yu J, Liang TB, Bai XL*
- 904** Irinotecan- vs oxaliplatin-based regimens for neoadjuvant chemotherapy in colorectal liver metastasis patients: A retrospective study  
*Liu W, Chen FL, Wang K, Bao Q, Wang HW, Jin KM, Xing BC*
- 918** Predictors of difficult endoscopic resection of submucosal tumors originating from the muscularis propria layer at the esophagogastric junction  
*Wang YP, Xu H, Shen JX, Liu WM, Chu Y, Duan BS, Lian JJ, Zhang HB, Zhang L, Xu MD, Cao J*
- 930** Liver transplantation with simultaneous splenectomy increases risk of cancer development and mortality in hepatocellular carcinoma patients  
*Fan HL, Hsieh CB, Kuo SM, Chen TW*
- 940** Development of an innovative nomogram of risk factors to predict postoperative recurrence of gastrointestinal stromal tumors  
*Guan SH, Wang Q, Ma XM, Qiao WJ, Li MZ, Lai MG, Wang C*
- 950** Comparison of short-term efficacy between totally laparoscopic gastrectomy and laparoscopic assisted gastrectomy for elderly patients with gastric cancer  
*Zhao RY, Li HH, Zhang KC, Cui H, Deng H, Gao JW, Wei B*
- 963** Personal predictive model based on systemic inflammation markers for estimation of postoperative pancreatic fistula following pancreaticoduodenectomy  
*Long ZD, Lu C, Xia XG, Chen B, Xing ZX, Bie L, Zhou P, Ma ZL, Wang R*
- 976** Feasible management of median arcuate ligament syndrome in orthotopic liver transplantation recipients  
*Li SX, Fan YH, Tian GY, Lv GY*

- 986** Study of preoperative diagnostic modalities in Chinese patients with superficial esophageal squamous cell carcinoma

*Zeng YT, Sun YY, Tan WC, Luo SA, Zou BH, Luo GY, Huang CY*

#### Observational Study

- 997** Oesophageal cancer metastases: An observational study of a more aggressive approach

*Pickett L, Dunne M, Monaghan O, Grogan L, Breathnach O, Walsh TN*

- 1008** Change of tumor-infiltrating lymphocyte of associating liver partition and portal vein ligation for staged hepatectomy for hepatocellular carcinoma

*Wang W, Deng ZF, Wang JL, Zhang L, Bao L, Xu BH, Zhu H, Guo Y, Wen Z*

- 1026** Blood index panel for gastric cancer detection

*Guo GH, Xie YB, Zhang PJ, Jiang T*

#### Randomized Controlled Trial

- 1037** Effect of cardiac output - guided hemodynamic management on acute lung injury in pediatric living donor liver transplantation

*Dou XJ, Wang QP, Liu WH, Weng YQ, Sun Y, Yu WL*

#### SYSTEMATIC REVIEWS

- 1049** Minimally invasive endoscopic repair of rectovaginal fistula

*Zeng YX, He YH, Jiang Y, Jia F, Zhao ZT, Wang XF*

#### META-ANALYSIS

- 1060** Laparoscopic appendectomy, stump closure and endoloops: A meta-analysis

*Zorzetti N, Lauro A, Bellini MI, Vaccari S, Dalla Via B, Cervellera M, Cirocchi R, Sorrenti S, D'Andrea V, Tonini V*

#### CASE REPORT

- 1072** Retrorectal mucinous adenocarcinoma arising from a tailgut cyst: A case report and review of literature

*Wang YS, Guo QY, Zheng FH, Huang ZW, Yan JL, Fan FX, Liu T, Ji SX, Zhao XF, Zheng YX*

#### LETTER TO THE EDITOR

- 1082** Successful treatment of acute symptomatic extensive portal venous system thrombosis by 7-day systemic thrombolysis

*Gao FB, Wang L, Zhang WX, Shao XD, Guo XZ, Qi XS*

- 1086** Prediction factors for ischemia of closed-loop small intestinal obstruction

*Pavlidis ET, Pavlidis TE*

**ABOUT COVER**

Editorial Board Member of *World Journal of Gastrointestinal Surgery*, Shu-You Peng, FACS, FRCP (Hon), MD, Full Professor, Department of Surgery, Medical School of Zhejiang University, Hangzhou 310009, Zhejiang Province, China. zrwkpsy@zju.edu.cn

**AIMS AND SCOPE**

The primary aim of *World Journal of Gastrointestinal Surgery* (WJGS, *World J Gastrointest Surg*) is to provide scholars and readers from various fields of gastrointestinal surgery with a platform to publish high-quality basic and clinical research articles and communicate their research findings online.

WJGS mainly publishes articles reporting research results and findings obtained in the field of gastrointestinal surgery and covering a wide range of topics including biliary tract surgical procedures, biliopancreatic diversion, colectomy, esophagectomy, esophagostomy, pancreas transplantation, and pancreatectomy, etc.

**INDEXING/ABSTRACTING**

The WJGS is now abstracted and indexed in Science Citation Index Expanded (SCIE, also known as SciSearch®), Current Contents/Clinical Medicine, Journal Citation Reports/Science Edition, PubMed, PubMed Central, Reference Citation Analysis, China National Knowledge Infrastructure, China Science and Technology Journal Database, and Superstar Journals Database. The 2022 Edition of Journal Citation Reports® cites the 2021 impact factor (IF) for WJGS as 2.505; IF without journal self cites: 2.473; 5-year IF: 3.099; Journal Citation Indicator: 0.49; Ranking: 104 among 211 journals in surgery; Quartile category: Q2; Ranking: 81 among 93 journals in gastroenterology and hepatology; and Quartile category: Q4.

**RESPONSIBLE EDITORS FOR THIS ISSUE**

Production Editor: Rui-Rui Wu, Production Department Director: Xiang Li, Editorial Office Director: Jia-Ru Fan.

**NAME OF JOURNAL**

*World Journal of Gastrointestinal Surgery*

**ISSN**

ISSN 1948-9366 (online)

**LAUNCH DATE**

November 30, 2009

**FREQUENCY**

Monthly

**EDITORS-IN-CHIEF**

Peter Schemmer

**EDITORIAL BOARD MEMBERS**

<https://www.wjgnet.com/1948-9366/editorialboard.htm>

**PUBLICATION DATE**

September 27, 2022

**COPYRIGHT**

© 2022 Baishideng Publishing Group Inc

**INSTRUCTIONS TO AUTHORS**

<https://www.wjgnet.com/bpg/gerinfo/204>

**GUIDELINES FOR ETHICS DOCUMENTS**

<https://www.wjgnet.com/bpg/GerInfo/287>

**GUIDELINES FOR NON-NATIVE SPEAKERS OF ENGLISH**

<https://www.wjgnet.com/bpg/gerinfo/240>

**PUBLICATION ETHICS**

<https://www.wjgnet.com/bpg/GerInfo/288>

**PUBLICATION MISCONDUCT**

<https://www.wjgnet.com/bpg/gerinfo/208>

**ARTICLE PROCESSING CHARGE**

<https://www.wjgnet.com/bpg/gerinfo/242>

**STEPS FOR SUBMITTING MANUSCRIPTS**

<https://www.wjgnet.com/bpg/GerInfo/239>

**ONLINE SUBMISSION**

<https://www.f6publishing.com>





Retrospective Study

# Personal predictive model based on systemic inflammation markers for estimation of postoperative pancreatic fistula following pancreaticoduodenectomy

Zhi-Da Long, Chao Lu, Xi-Gang Xia, Bo Chen, Zhi-Xiang Xing, Lei Bie, Peng Zhou, Zhong-Lin Ma, Rui Wang

**Specialty type:** Gastroenterology and hepatology

**Provenance and peer review:**

Unsolicited article; Externally peer reviewed.

**Peer-review model:** Single blind

**Peer-review report's scientific quality classification**

Grade A (Excellent): 0  
Grade B (Very good): B  
Grade C (Good): C  
Grade D (Fair): 0  
Grade E (Poor): 0

**P-Reviewer:** Cabezu AS, Spain;  
Gaspar AF, Brazil

**Received:** May 3, 2022

**Peer-review started:** May 3, 2022

**First decision:** May 11, 2022

**Revised:** May 22, 2022

**Accepted:** July 27, 2022

**Article in press:** July 27, 2022

**Published online:** September 27, 2022



**Zhi-Da Long, Chao Lu, Xi-Gang Xia, Bo Chen, Zhi-Xiang Xing, Lei Bie, Peng Zhou, Rui Wang,** Department of Hepatobiliary and Pancreaticosplenic Surgery, Jingzhou Hospital, Yangtze University, Jingzhou 434020, Hubei Province, China

**Zhong-Lin Ma,** Department of Hepatobiliary Surgery, Lu'an Hospital of Anhui Medical University, Hefei 237006, Anhui Province, China

**Corresponding author:** Rui Wang, MD, Surgical Oncologist, Department of Hepatobiliary and Pancreaticosplenic Surgery, Jingzhou Hospital, Yangtze University, No. 60 Chuyuan Road, Jingzhou District, Jingzhou 434020, Hubei Province, China. [wangrui\\_2022022@163.com](mailto:wangrui_2022022@163.com)

## Abstract

### BACKGROUND

Postoperative pancreatic fistula (PF) is a serious life-threatening complication after pancreaticoduodenectomy (PD). Our research aimed to develop a machine learning (ML)-aided model for PF risk stratification.

### AIM

To develop an ML-aided model for PF risk stratification.

### METHODS

We retrospectively collected 618 patients who underwent PD from two tertiary medical centers between January 2012 and August 2021. We used an ML algorithm to build predictive models, and subject prediction index, that is, decision curve analysis, area under operating characteristic curve (AUC) and clinical impact curve to assess the predictive efficiency of each model.

### RESULTS

A total of 29 variables were used to build the ML predictive model. Among them, the best predictive model was random forest classifier (RFC), the AUC was [0.897, 95% confidence interval (CI): 0.370–1.424], while the AUC of the artificial neural network, eXtreme gradient boosting, support vector machine, and decision tree were between 0.726 (95%CI: 0.191–1.261) and 0.882 (95%CI: 0.321–1.443).

### CONCLUSION

Fluctuating serological inflammatory markers and prognostic nutritional index

can be used to predict postoperative PF.

**Key Words:** Pancreatoduodenectomy; Pancreatic fistula; Machine learning algorithm; Systemic inflammatory biomarker; Risk prediction

©The Author(s) 2022. Published by Baishideng Publishing Group Inc. All rights reserved.

**Core tip:** Our research is based on machine learning (ML) algorithms and integrates the correlation between serum inflammatory factors and high risk of postoperative pancreatic fistula (PF), and constructs early warning models that can predict postoperative PF, and the predictive efficiency of these ML-based models may be at the population-based level. In the future, we expect these findings to expand external research to strengthen valuable supporting information and guide treatment decisions.

**Citation:** Long ZD, Lu C, Xia XG, Chen B, Xing ZX, Bie L, Zhou P, Ma ZL, Wang R. Personal predictive model based on systemic inflammation markers for estimation of postoperative pancreatic fistula following pancreaticoduodenectomy. *World J Gastrointest Surg* 2022; 14(9): 963-975

**URL:** <https://www.wjgnet.com/1948-9366/full/v14/i9/963.htm>

**DOI:** <https://dx.doi.org/10.4240/wjgs.v14.i9.963>

## INTRODUCTION

Pancreatoduodenectomy (PD), also known as a Whipple procedure, is one of the most difficult and complex surgeries that carries a high rate of major complications[1]. Post-operative pancreatic fistula (PF), as one of the most difficult complications after PD, can seriously endanger the lives of patients, so it has become a field of continuous concern for pancreatic surgeons[1,2]. Although the safety of PD has improved significantly in the past three decades[3,4]. Alarming, previous prospective studies have reported that postoperative PF occupied an incidence of > 10%[5-7].

In recent years, people have studied different styles of surgery and perioperative attempts to reduce the incidence of postoperative PF. However, regardless of the type of surgery, PF is still the most common fatal complication after pancreatectomy. Understanding the potential complications and early warning of these complications is important for the care of these severe patients.

Previous studies have utilized preoperative radiology and clinical variables combined with specific intraoperative factors to predict the risk of postoperative PF[8-11]. Despite advances in predictive platforms for postoperative PF, they have undergone a constantly changing approach. However, because of its unsatisfactory predictive performance, an improved delivery system is deemed necessary. Therefore, exploring an optimal risk score range model may contribute to eliminating potential life-threatening complications, and stratifying patients with postoperative PF risk, which can be better applied to clinical management.

Nowadays, a series of serum markers suggest that detecting systemic inflammation may be associated with the risk of benign and malignant disease progression[12-14]. At the same time, the systemic reaction stimulated by local inflammation is closely related to the complications after gastrointestinal surgery[15,16]. In addition, machine learning (ML) algorithms have been widely used in the field of medicine. These unceasing new algorithms and iterative analyses might be useful for prognostication in cases and optimize individual treatment decisions[17]. Collectively, this combination has facilitated elevated predictive performance while minimizing the prediction error.

Given this situation, we searched for the help of inflammatory factors and ML-based algorithms to optimize the predictive accuracy for postoperative PF. In this study, we tried to identify alternative predictors independently related to postoperative PF and develop an optimal risk stratification model that can accurately identify high-risk patients with postoperative PF.

## MATERIALS AND METHODS

### Patients selection

Patients who underwent PD to treat various periampullary tumors from two tertiary medical centers (Jingzhou Hospital and Lu'an Hospital of Anhui Medical University) between January 2012 and August 2021 were retrospectively reviewed. The inclusion criteria were: (1) Resected tumor specimens were confirmed to be malignant by pathological examination; (2) Blood routine examination and liver function examination results were found within 3 d before surgery; and (3) The patient had complete

case data and relevant indicators of imaging, pathology and laboratory examination. The exclusion criteria were: (1) Patients receiving preoperative treatment, such as thermal ablation, neoadjuvant chemotherapy or radiotherapy; (2) Severe respiratory and circulatory diseases; (3) Severe acute cholangitis or infection in other parts of the body before surgery; (4) Metastasis from other parts of the primary tumor or direct invasion of adjacent organs from the primary tumor; and (5) Parathyroid diseases or other factors interfering with abnormal changes of procalcitonin (PCT). This study was a retrospective cohort study, which was approved by the Ethics Committee of Jingzhou Central Hospital (Reference: 2021-JH005) and conformed to the Declaration of Helsinki. Because this study adopted anonymous follow-up, the patients' personal privacy information was strictly confidential. The detailed research flow chart is shown in [Figure 1](#).

### **Diagnostic criteria for postoperative PF**

According to the standards defined by the International Study Group for Pancreatic Fistula (ISGPF) in 2016, that is, drainage flow > 30 mL for  $\geq 72$  h after an operation, the amylase content of the drainage fluid is measured. If it exceeds  $\geq 3$  times the upper limit of normal and had a clinical impact (such as abdominal pain or fever) and needed clinical treatment, it is judged that PF has occurred. The grade of PF updated by ISGPF in 2016 removes the diagnosis of grade A PF. The increase in amylase in asymptomatic drainage fluid is considered biochemical leakage, *i.e.*, non-real PF. The occurrence of significant clinical symptoms based on biochemical leakage and the change of treatment strategy (such as puncture and drainage, interventional hemostasis, indwelling abdominal drainage tube for > 3 wk, infection, *etc.*) is defined as grade B PF. If grade B PF needs surgical treatment, or is complicated with organ failure or even death, the grade of PF increases to grade C. Therefore, grades B and C PF are also known as clinical postoperative PF[18,19].

### **Blood sample collection**

We chose to collect 3–5 mL blood samples from each patient on an empty stomach in the morning of 3 d before the operation, and included the latest blood routine and liver function tests in this study. Peripheral venous blood was taken in the morning of d 1, 3 and 5 after the operation, and the changes in C-reactive protein (CRP), serum PCT, and white blood cells were continuously observed.

### **Data collection and quality assessment**

We obtained population baseline data and clinical pathological data from the patients' medical records. For instance, the pancreatic texture was evaluated by the surgeon during the operation (soft 1, hard 0), and the diameter of the main pancreatic was obtained by computed tomography or magnetic resonance imaging before the operation. We also collected routine laboratory measurement results, and when the missing value was  $\geq 10\%$  of the bias of the total variable, the variable was directly discarded and not included in the final model variable screening[20]. Finally, a total of 29 variables that met the inclusion criteria were used to build ML-based models.

### **Construction and verification of ML-based models**

At the beginning of building the model, we randomly divided the population data into two parts, namely, the training queue and the verification queue. The training queue was used to construct the predictive model, and the validation queue was used as the internal validation of the model to evaluate the robustness of the model. When screening candidate variables, we adopted the "two-step segmentation evaluation", that is, the principle of random sorting to obtain the intersection[21]. In short, by sorting the intersection of variable sets, the optimal subset modeling was obtained. Finally, these models were evaluated through inspection, discrimination and calibration.

### **Statistical analysis**

As for descriptive variables (*i.e.* continuous or classified variables), the median (interquartile range) or frequency (percentage) were used for statistical analysis. The  $\chi^2$  test or Mann-Whitney test was used to calculate the variables between groups to evaluate whether there was a statistical difference. Stepwise regression based on the minimum value of the Akaike information standard was used to select the variables. All data analysis was completed with the help of R language software (version 4.0.4, <http://www.r-project.org/>). All *P* values were double tailed, and *P* < 0.05 was statistically significant.

## **RESULTS**

### **Clinicopathological baseline characteristics of patients**

In this study, all patients were randomly divided into a training set (*n* = 432, 70%) and validation set (*n* = 186, 30%) *via* the caret package. Seventy-eight (18.06%) and 20 (10.75%) patients developed postoperative PF in the training and validation group, respectively, as shown in [Table 1](#). There were 76 (12.3%) grade B and 22 (3.6%) grade C. One patient died of multiple organ failure due to drug-resistant

**Table 1** Baseline demographic and clinicopathological characteristics of patients

Variables	Training set				Testing set			
	Overall (n = 432)	Non-POPF (n = 354)	POPF (n = 78)	P value	Overall (n = 186)	Non-POPF (n = 166)	POPF (n = 20)	P value
Age, median (IQR)	55.0 (49.0–61.0)	55.0 (49.0–61.0)	53.0 (47.25–61.0)	0.147	55.0 (50.0–60.0)	55.0 (50.0–60.0)	51.50 (45.75–59.50)	0.182
BMI, median (IQR)	23.10 (21.80–24.60)	22.80 (21.50–24.20)	25.0 (23.33–26.92)	< 0.001	22.85 (21.72–24.30)	22.70 (21.52–23.98)	24.35 (22.88–26.13)	< 0.001
Gender (%)								
Male	283 (65.5)	227 (64.1)	56 (71.8)	0.247	127 (68.3)	110 (66.3)	17 (85.0)	0.148
Female	149 (34.5)	127 (35.9)	22 (28.2)		59 (31.7)	56 (33.7)	3 (15.0)	
Smoking (%)								
Yes	198 (45.8)	143 (40.4)	55 (70.5)	< 0.001	89 (47.8)	76 (45.8)	13 (65.0)	0.165
No	234 (54.2)	211 (59.6)	23 (29.5)		97 (52.2)	90 (54.2)	7 (35.0)	
Drinking history (%)								
Yes	129 (29.9)	78 (22.0)	51 (65.4)	< 0.001	54 (29.0)	40 (24.1)	14 (70.0)	< 0.001
No	303 (70.1)	276 (78.0)	27 (34.6)		132 (71.0)	126 (75.9)	6 (30.0)	
Diabetes (%)								
Yes	110 (25.5)	49 (13.8)	61 (78.2)	< 0.001	44 (23.7)	30 (18.1)	14 (70.0)	< 0.001
No	322 (74.5)	305 (86.2)	17 (21.8)		142 (76.3)	136 (81.9)	6 (30.0)	
Hypertension (%)								
Yes	164 (38.0)	129 (36.4)	35 (44.9)	0.208	59 (31.7)	49 (29.5)	10 (50.0)	0.108
No	268 (62.0)	225 (63.6)	43 (55.1)		127 (68.3)	117 (70.5)	10 (50.0)	
Abdominal operation (%)								
Yes	130 (30.1)	103 (29.1)	27 (34.6)	0.409	53 (28.5)	47 (28.3)	6 (30.0)	1
No	302 (69.9)	251 (70.9)	51 (65.4)		133 (71.5)	119 (71.7)	14 (70.0)	
Remnant texture (%)								
Soft	121 (28.0)	62 (17.5)	59 (75.6)	< 0.001	44 (23.7)	27 (16.3)	17 (85.0)	< 0.001
Hard	311 (72.0)	292 (82.5)	19 (24.4)		142 (76.3)	139 (83.7)	3 (15.0)	
Blood transfusion (%)								
Yes	232 (53.7)	188 (53.1)	44 (56.4)	0.686	96 (51.6)	84 (50.6)	12 (60.0)	0.577
No	200 (46.3)	166 (46.9)	34 (43.6)		90 (48.4)	82 (49.4)	8 (40.0)	
Anemia (%)								
Yes	218 (50.5)	179 (50.6)	39 (50.0)	1	84 (45.2)	69 (41.6)	15 (75.0)	0.009
No	214 (49.5)	175 (49.4)	39 (50.0)		102 (54.8)	97 (58.4)	5 (25.0)	
Lesion size (%), cm								
> 3	182 (42.1)	125 (35.3)	57 (73.1)	< 0.001	67 (36.0)	54 (32.5)	13 (65.0)	0.009
≤ 3	250 (57.9)	229 (64.7)	21 (26.9)		119 (64.0)	112 (67.5)	7 (35.0)	
Pancreatic duct diameter (%), mm								
< 3	154 (35.6)	93 (26.3)	61 (78.2)	< 0.001	63 (33.9)	49 (29.5)	14 (70.0)	0.001



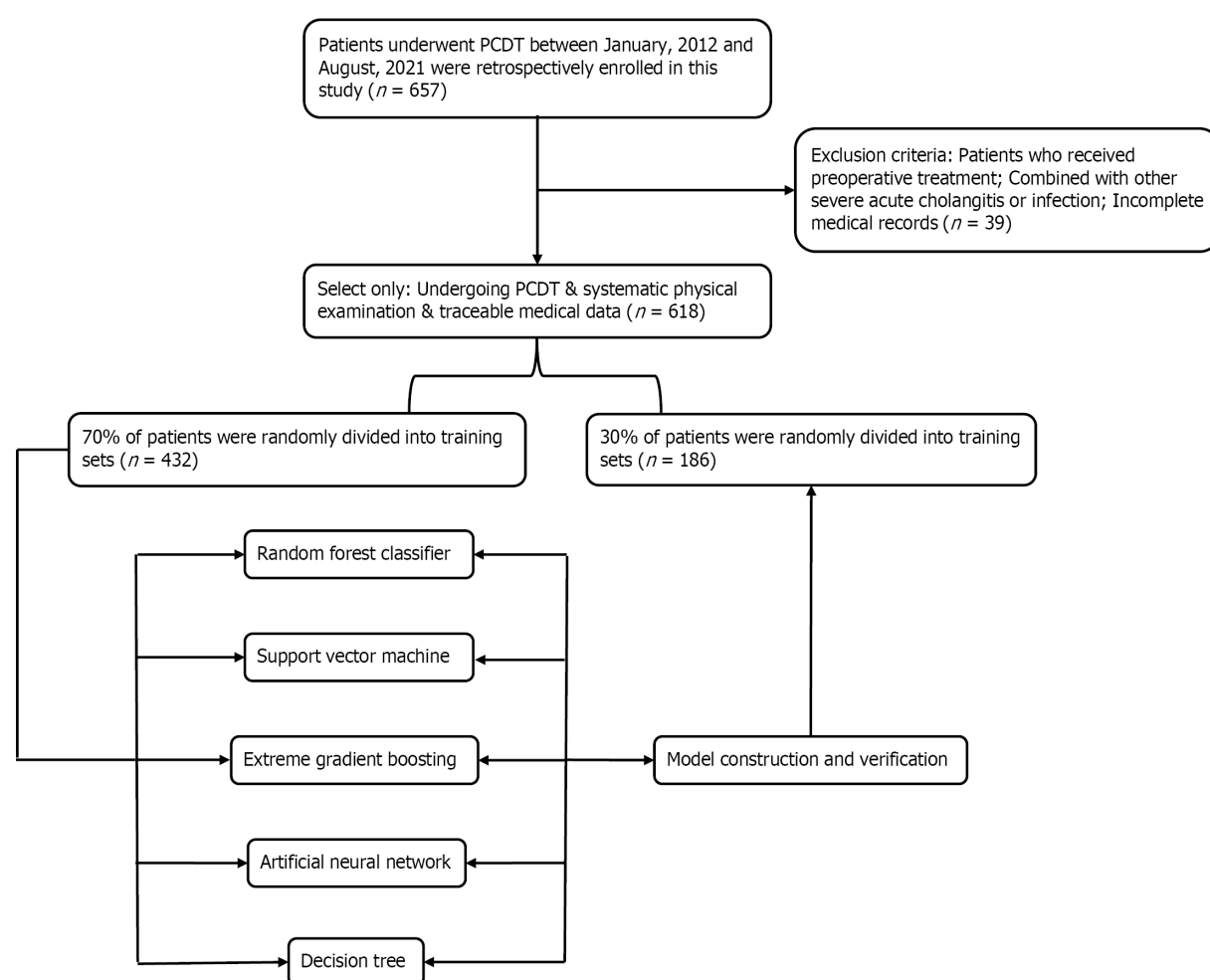
≥ 3	278 (64.4)	261 (73.7)	17 (21.8)		123 (66.1)	117 (70.5)	6 (30.0)	
ASA classification (%)								
I + II	231 (53.5)	188 (53.1)	43 (55.1)	0.843	85 (45.7)	78 (47.0)	7 (35.0)	0.436
III + IV	201 (46.5)	166 (46.9)	35 (44.9)		101 (54.3)	88 (53.0)	13 (65.0)	
CRP, median (IQR), mg/L	32.0 (22.0–44.0)	29.0 (21.0–38.0)	88.50 (56.0–120.0)	< 0.001	30.0 (22.0–40.0)	29.0 (21.0–38.0)	84.50 (42.25–109.25)	< 0.001
WBC, median (IQR), 10 <sup>9</sup>	5.70 (5.30–6.30)	5.70 (5.20–6.20)	6.0 (5.60–6.60)	< 0.001	5.70 (5.20–6.30)	5.60 (5.20–6.20)	6.40 (5.52–6.82)	0.002
PCT, median (IQR), µg/L	0.54 (0.37–0.68)	0.49 (0.34–0.61)	1.06 (0.78–1.21)	< 0.001	0.52 (0.37–0.67)	0.49 (0.35–0.63)	0.84 (0.68–1.09)	< 0.001
AGR, median (IQR)	1.50 (1.30–1.60)	1.50 (1.40–1.60)	1.35 (1.20–1.40)	< 0.001	1.50 (1.30–1.60)	1.50 (1.40–1.60)	1.35 (1.17–1.52)	0.003
PNI, median (IQR)	49.60 (48.10–51.23)	49.90 (48.32–51.60)	48.60 (47.35–49.60)	< 0.001	50.10 (48.40–51.48)	50.30 (48.42–51.60)	49.30 (46.85–50.37)	0.02
Neutrophil count, median (IQR), 10 <sup>9</sup>	4.02 (3.49–4.59)	4.18 (3.70–4.68)	3.36 (3.03–3.74)	< 0.001	3.94 (3.51–4.54)	4.03 (3.57–4.57)	3.46 (3.11–3.76)	< 0.001
Lymphocyte count, median (IQR), 10 <sup>9</sup>	1.64 (1.51–1.78)	1.63 (1.50–1.76)	1.79 (1.60–1.94)	< 0.001	1.64 (1.53–1.76)	1.63 (1.52–1.73)	1.83 (1.69–1.98)	< 0.001
Platelet count, median (IQR), 10 <sup>9</sup>	230.0 (208.0–252.0)	236.0 (213.0–255.0)	206.0 (185.25–229.75)	< 0.001	229.0 (206.0–253.75)	232.0 (208.25–257.75)	200.0 (182.50–225.0)	< 0.001
Monocyte count, median (IQR), 10 <sup>9</sup>	0.52 (0.45–0.60)	0.55 (0.47–0.62)	0.44 (0.39–0.49)	< 0.001	0.53 (0.46–0.61)	0.54 (0.47–0.62)	0.48 (0.42–0.52)	0.003
Hemoglobin, median (IQR), g/L	132.0 (124.0–139.0)	130.0 (121.25–138.0)	138.0 (133.0–142.75)	< 0.001	132.0 (126.0–140.0)	132.0 (126.0–139.75)	134.50 (130.0–141.0)	0.026
NLR, median (IQR)	2.0 (1.70–2.30)	1.90 (1.70–2.20)	2.70 (2.22–3.10)	< 0.001	2.0 (1.70–2.30)	1.90 (1.60–2.20)	2.80 (2.42–3.05)	< 0.001
NAR, median (IQR)	0.08 (0.07–0.09)	0.08 (0.07–0.09)	0.60 (0.30–0.88)	< 0.001	0.08 (0.07–0.09)	0.08 (0.07–0.09)	0.65 (0.38–0.80)	< 0.001
PLR, median (IQR)	136.20 (116.68–157.43)	143.85 (123.23–161.70)	113.15 (102.58–128.0)	< 0.001	136.45 (120.62–155.80)	141.0 (121.22–159.78)	120.15 (104.78–128.57)	< 0.001
LMR, median (IQR)	3.40 (2.90–3.80)	3.30 (2.80–3.70)	3.90 (3.52–4.70)	< 0.001	3.50 (3.0–3.80)	3.40 (2.90–3.70)	4.15 (3.75–4.48)	< 0.001
HALP, median (IQR)	53.95 (51.08–56.50)	52.90 (50.50–55.20)	72.75 (69.32–75.25)	< 0.001	52.45 (50.40–55.18)	51.95 (50.10–54.30)	70.10 (68.18–72.62)	< 0.001

POPF: Postoperative pancreatic fistula; IQR: Inter-quartile range; BMI: Body mass index; ASA: American Society of Anesthesiologists; CRP: C-reactive protein; WBC: White blood cell; PCT: Procalcitonin; AGR: Albumin-to-globulin ratio; PNI: Prognostic nutrition index; NLR: Neutrophil-to-lymphocyte ratio; NAR: Neutrophil-to-albumin ratio; PLR: Platelet-to-lymphocyte ratio; LMR: Lymphocyte-to-monocyte ratio; HALP: Hemoglobin level × albumin level × lymphocyte count/platelet count ratio.

bacterial infection; five underwent reoperation because of continuous blood drainage *via* the drainage tube, which was confirmed to be abdominal bleeding caused by intraoperative PF; and two were transferred to intensive care.

### Selection of candidate variables

Feature selection is a universal problem in ML[22]. We performed an iterative analysis of 29 potential candidate variables, and the correlation matrix showed that there was a significant correlation between postoperative PF and inflammatory factors and some clinical variables (Figure 2A), including CRP, PCT, neutrophil-to-lymphocyte ratio (NLR), platelet-to-lymphocyte ratio (PLR), and hemoglobin level × albumin level × lymphocyte count/platelet count ratio (HALP). As shown in Figure 2B, HALP, PCT, neutrophil-to-albumin ratio (NAR), PLR and PNI were the top important predictors. Meanwhile, the seven top-ranked predictors were HALP, remnant texture, PCT, NAR, PLR, PNI, and body mass index (BMI).



DOI: 10.4240/wjgs.v14.i9.963 Copyright ©The Author(s) 2022.

Figure 1 The flow chart. PD: Pancreatoduodenectomy.

### Construction of PF predictive model based on ML algorithm

In the training queue, each patient could use positive or negative training and output the final judgment results. For example, a random forest classifier (RFC) algorithm could be used to effectively navigate the free parameter space to obtain a robust model (Figure 3A). The variable Gini index in the RFC model is shown in Supplementary Table 1. In addition, data mining through the decision tree (DT) model was useful, as shown in Figure 3B, among the candidate variables related to inflammatory factors, PCT and BMI also played an important role in DT as branch weight, which could be used as an important predictor of postoperative PF. The artificial neural network (ANN) model also showed relatively robust predictive performance, but slightly lower than that of RFC (Figure 4). We also constructed nomographs, which depended on the parameters obtained by LR, as shown in Supplementary Table 2. Compared with traditional predictive models, inflammatory factors also accounted for an important proportion.

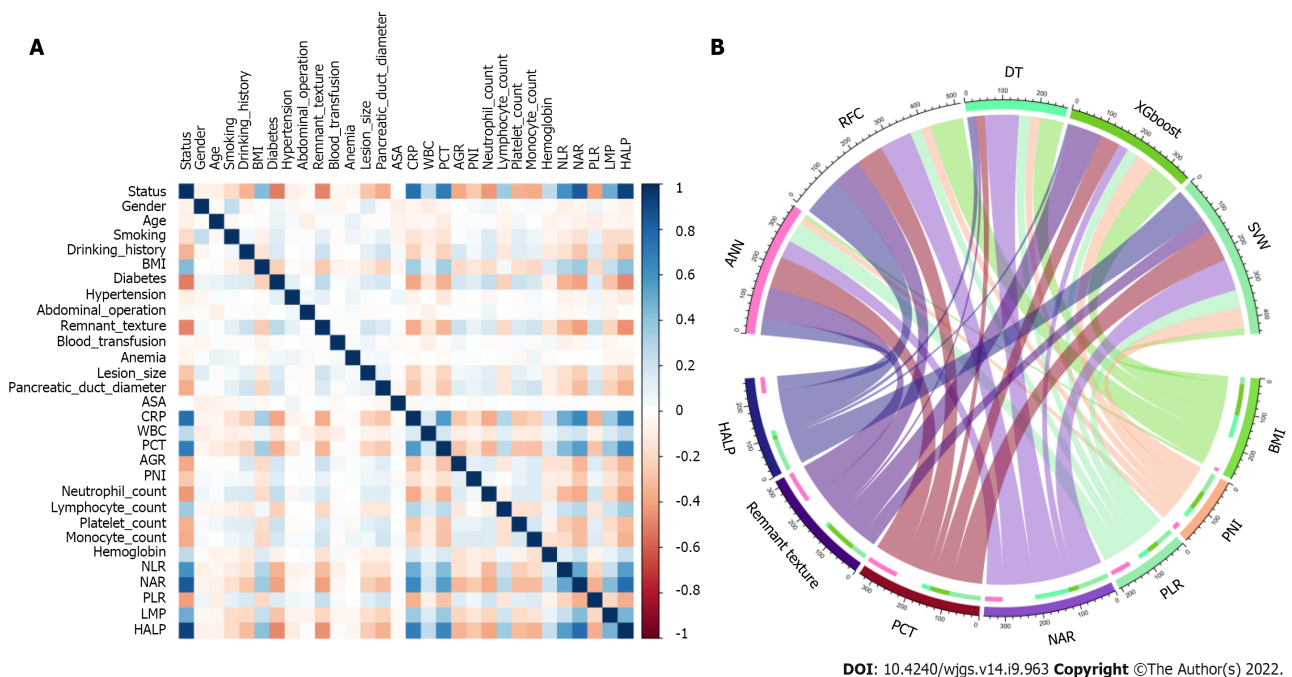
### Comparison between ML-based models

To explore the effectiveness of five supervised learning models for postoperative PF evaluation, we used decision curve analysis (DCA) for evaluation, which was consistent with the results of the included candidate variables. Even if different predictive models included the same variables, there were certain differences in their predictive effectiveness, as shown in Figure 5. In addition, as shown in Table 2, the predictive efficiency of RFC was the best [0.897, 95% confidence interval (CI): 0.370–1.424] compared with the other four predictive models, followed by ANN (0.882, 95%CI: 0.321–1.443), DT (0.807, 95%CI: 0.250–1.364), extreme gradient boosting (XGboost) (0.793, 95%CI: 0.270–1.316), and support vector machine (SVM) (0.726, 95%CI: 0.191–1.261). In conclusion, the iterative algorithm analysis using supervised learning, RFC and ANN, as well as DT (ML-aided decision support) models were properly used to guide postoperative PF prediction.

**Table 2** The operating characteristic curve analyses for each machine learning-based model

Model	AUC		No. of candidate variables
	Mean	95%CI	
RFC	0.897	0.370–1.424	7
SVM	0.726	0.191–1.261	8
DT	0.807	0.250–1.364	8
ANN	0.882	0.321–1.443	7
XGboost	0.793	0.270–1.316	9

95%CI: 95% confidence interval; RFC: Random forest classifier; SVM: Support vector machine; DT: Decision tree; ANN: Artificial neural network; XGboost: Extreme gradient boosting; AUC: Area under curve.



**Figure 2** Variable filtering and weight allocation. A: Correlation matrix analysis; B: Weight distribution of the candidate variables. BMI: Body mass index; ASA: American Society of Anesthesiologists; CRP: C-reactive protein; WBC: White blood cell; PCT: Procalcitonin; AGR: Albumin-to-globulin ratio; PNI: Prognostic nutrition index; NLR: Neutrophil-to-lymphocyte ratio; NAR: Neutrophil-to-albumin ratio; PLR: Platelet-to-lymphocyte ratio; LMR: Lymphocyte-to-monocyte ratio; HALP: Hemoglobin level  $\times$  albumin level  $\times$  lymphocyte count/platelet count ratio; RFC: Random forest classifier; SVM: Support vector machine; DT: Decision tree; ANN: Artificial neural network; XGboost: Extreme gradient boosting.

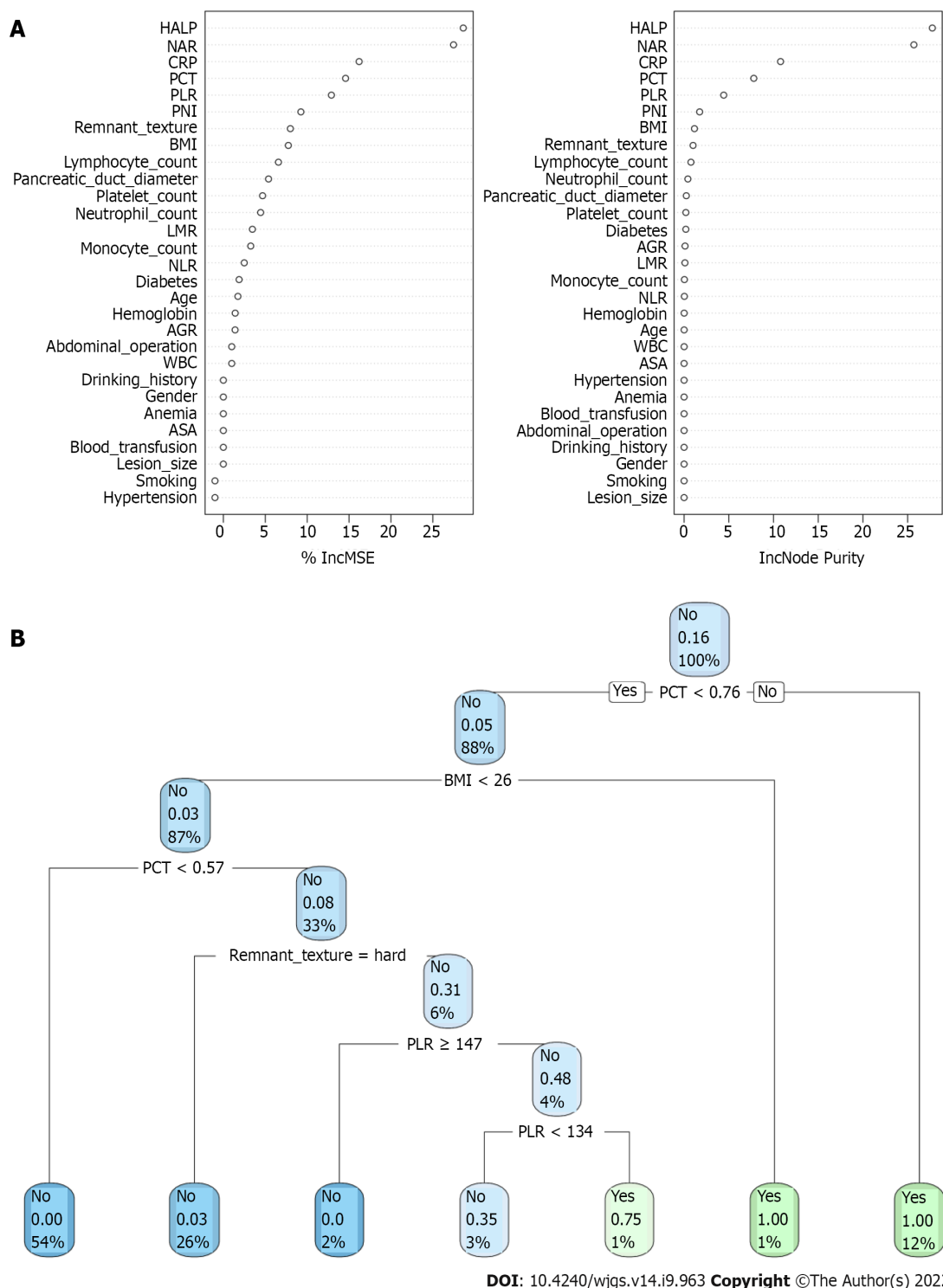
### Internal validation of the optimal postoperative PF predictive model

We evaluated the clinical predictive efficiency of the optimal prediction model (RFC), as shown in [Supplementary Figure 1](#). RFC can be used to achieve accurate stratification of patients' postoperative PF via clinical impact curve (CIC). In general, RFC performed best in the construction of prediction models by fusing inflammatory markers.

## DISCUSSION

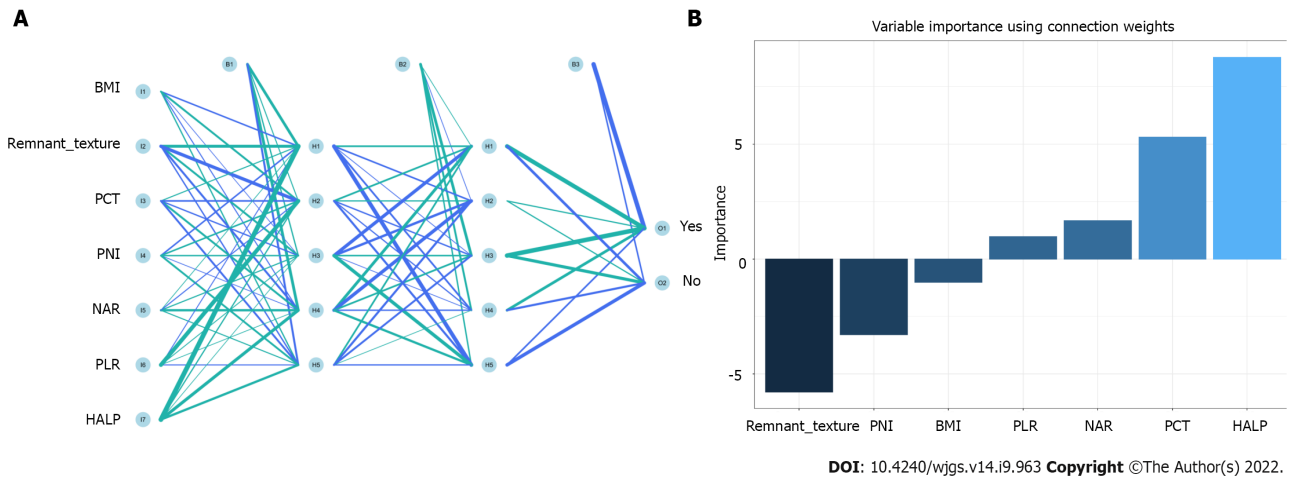
Our study revealed two major findings. First, accurate risk stratification of postoperative PF in patients who received PD, which mainly depended on the added value of systemic inflammation markers. Second, the ML-based predictive model is better than the traditional predictive algorithm model, which is suitable for identifying whether patients have postoperative PF.

Several risk factors leading to such complications have been reported in the relevant literature, including pancreas texture, BMI, intraoperative blood loss, blood transfusion, and operating time[9,23,24]. We summarize updated literature on predicting postoperative PF, in combination with various

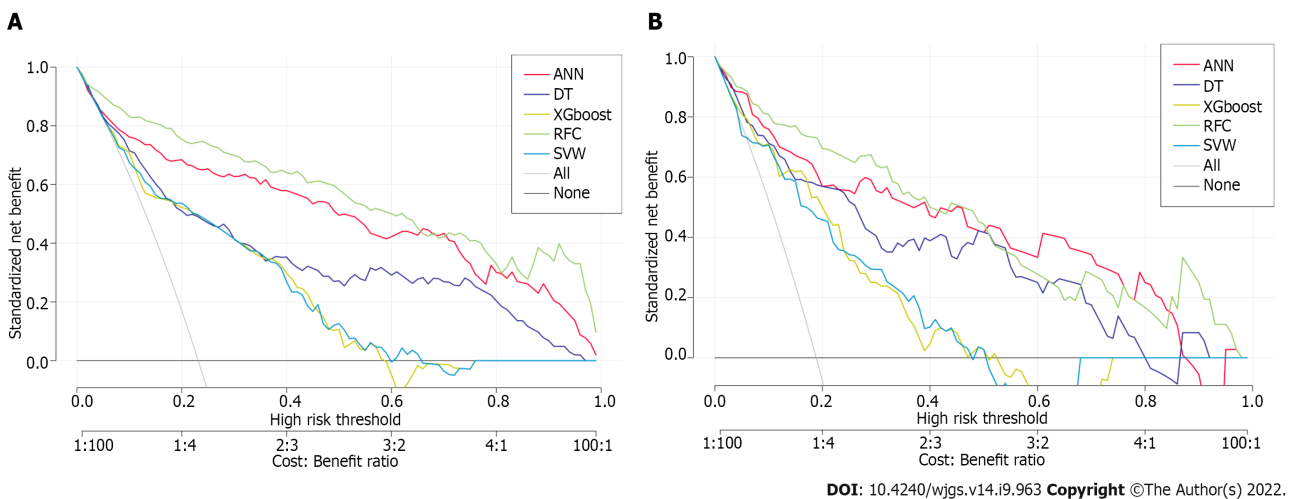


**Figure 3 Visualization of predictive model based on machine learning algorithm.** A: Random forest classifier model; B: Decision tree (DT) model. The candidate factors associated with postoperative pancreatic fistula were ordered via RFC algorithm (A) and (B) prediction node and weight were allocated via DT algorithm. BMI: Body mass index; ASA: American Society of Anesthesiologists; CRP: C-reactive protein; WBC: White blood cell; PCT: Procalcitonin; AGR: Albumin-to-globulin ratio; PNI: Prognostic nutrition index; NLR: Neutrophil-to-lymphocyte ratio; NAR: Neutrophil-to-albumin ratio; PLR: Platelet-to-lymphocyte ratio; LMR: Lymphocyte-to-monocyte ratio; HALP: Hemoglobin level  $\times$  albumin level  $\times$  lymphocyte count/platelet count ratio; RFC: Random forest classifier; SVM: Support vector machine; DT: Decision tree; ANN: Artificial neural network.

candidate predictive markers in [Supplementary Table 3](#). Guo *et al*[25] reported that the texture of pancreas, size of the main pancreatic duct, portal vein invasion and confirmed pathology are the risk factors of postoperative PF. Tajima *et al*[26] summarized that preoperative imaging evaluation of pancreatic pathologies would be also beneficial for stratifying. Not surprisingly, systemic inflammatory markers such as neutrophils, lymphocytes, platelets, CRP, albumin, and biomarkers may help predict postoperative PF. The systemic response to postoperative local inflammatory stimulation is tightly



**Figure 4 Visualization of predictive model based on artificial neural network algorithm.** A: Artificial neural network model; B: Variable importance using connection weight. BMI: Body mass index; PCT: Procalcitonin; PNI: Prognostic nutrition index; NAR: Neutrophil-to-albumin ratio; PLR: Platelet-to-lymphocyte ratio; HALP: Hemoglobin level  $\times$  albumin level  $\times$  lymphocyte count/platelet count ratio.



**Figure 5 Efficiency evaluation of machine learning-based prediction model.** A: Decision curve analysis (DCA) of training set; B: DCA of testing set. SVM: Support vector machine; DT: Decision tree; ANN: Artificial neural network; RFC: Random forest classifier; XGboost: Extreme gradient boosting.

related to the complications after gastrointestinal surgery[27]. Gasteiger *et al*[15] reported that postoperative pancreatitis and inflammatory reaction are the main determinants of postoperative PF [15]. Intriguingly, our calculated risk factors for postoperative PF and inflammatory factors accounted for an irreplaceable weight in the predictive model.

In this study, an attempt was made to improve early postoperative risk stratification by combining local pancreatic residual inflammatory status and systemic response. We found that abnormal HALP, PCT, NAR, PLR and PNI showed reliable predictive value for postoperative PF. Previous studies have confirmed that neutrophils, as the source of vascular endothelial growth factor and tissue inhibitor protease, can promote tumor infiltration and distant metastasis[28-30]. Additionally, the number of lymphocytes in cancer patients changes frequently, which seriously affects the prognosis and survival rate[31,32]. As noted above, it appears that inflammatory factors were highly related to the presence of postoperative PF. Combined with these findings, our analysis showed that systemic inflammatory markers are of value in predicting postoperative PF.

Our ML-based model was based on clinical parameters and laboratory test results, which were consistent with previous research results. Clinical indicators including preoperative serum albumin, lipase level, and amount of intraoperative fluid infusion were independent risk factors of postoperative PF[23,24,33]. Therefore, we further analyzed the accuracy of the predictive model constructed between clinical parameters and systemic inflammatory markers based on an ML-based algorithm. Not surprisingly, we found that systemic inflammatory markers accounted for a high weight in each model. Among these predictive models, RFC allowed the calculation of risk level based on candidate variables, so the best predictive efficiency was obtained. It is not surprising that RFC adopted the resampling



technique of bootstrapping to repeatedly focus on the “bagging” procedure[34]. To detect the discrimination of the ML-based model, the DCA and CIC methods were used to evaluate the predictive performance, and the results were consistent with the expected goal. Taken together, our model may apply to patients who intended to receive PD, especially to help surgeons decide whether to prevent postoperative PF after surgery.

Despite several strengths, there were some noteworthy limitations to this study. First, patients included were from two tertiary referral hospitals, which may have resulted in selection bias. Second, although we have established a perfect predictive model through an ML-based algorithm, our model still needs to be confirmed in other hospital settings. Although we adopted internal data cross-validation, we still need more external data to verify its feasibility in the future. Third, we only adopted simple data obtained from classification, missing clinical data were not considered throughout the study. Hence, incorporating specific new technologies such as immunodiagnostic biomarkers may help to improve the accuracy of predictive models.

## CONCLUSION

Our results provide new insights into candidate predictive markers associated with high risk of PF. With the help of HALP, NAR, CRP, PCT and PLR, we developed ML-based predictive models, and the performance of these unsupervised integrated models was superior to that of traditional predictive models. We expect these findings to extend research to strengthen clinical decision-making and guide treatment.

## ARTICLE HIGHLIGHTS

### Research background

We provide insights into the candidate predictive markers associated with a high risk of postoperative pancreatic fistula (PF) *via* serum inflammatory secretion. With the help of hemoglobin level  $\times$  albumin level  $\times$  lymphocyte count/platelet count ratio, neutrophil-to-albumin ratio, C-reactive protein, procalcitonin and platelet-to-lymphocyte ratio, we develop machine learning (ML)-based predictive models, and the predictive performance of these unsupervised integrated models was superior to that of traditional predictive models. We expect these findings to extend research to strengthen clinical decision-making and guide treatment.

### Research motivation

Fluctuating serological inflammation markers and prognostic nutritional index can be detected in the early postoperative period, and clinically well established to predict postoperative PF; in particular, random forest classifier (RFC) performed best, which can guide optimal treatment, clinical management and prevent or mitigate adverse consequences.

### Research objectives

A total of 29 variables were used to build the ML predictive model. Among them, the best predictive model was RFC, the area under the curve (AUC) was [0.897, 95% confidence interval (CI): 0.370–1.424], while the AUC of the artificial neural network, eXtreme gradient boosting, support vector machine, and decision tree were between 0.726 (95%CI: 0.191–1.261) and 0.882 (95%CI: 0.321–1.443).

### Research methods

As for descriptive variables (*i.e.*, continuous or classified variables), the median (interquartile range) or frequency (percentage) were used for statistics in this study. The  $\chi^2$  test or Mann–Whitney test was used to calculate the variables between groups to evaluate whether there was a statistical difference. Stepwise regression based on the minimum value of the Akaike information standard was used to select the variables. All data analysis was completed with the help of R language software (version 4.0.4, <http://www.r-project.org/>). All *P* values were double tailed, and *P* < 0.05 was statistically significant.

### Research results

A total of 29 variables were used to build the ML predictive model. Among them, the best predictive model was RFC, the area under the curve (AUC) was [0.897, 95% confidence interval (CI): 0.370–1.424], while the AUC of the artificial neural network, eXtreme gradient boosting, support vector machine, and decision tree were between 0.726 (95%CI: 0.191–1.261) and 0.882 (95%CI: 0.321–1.443).

### Research conclusions

Fluctuating serological inflammatory markers and prognostic nutritional index (PNI) can be detected in

the early postoperative period, which has been clinically proved to predict postoperative PF. In particular, RFC performed best, which can guide optimal treatment, clinical management, and prevent or mitigate adverse consequences.

### Research perspectives

PD, also known as a Whipple procedure, is one of the most difficult and complex surgeries that carries a high rate of major complications. Postoperative PF, as one of the most difficult complications after PD, can seriously endanger the lives of patients, so it has become an area of continuous concern for pancreatic surgeons. Although the safety of PD has improved significantly in the past three decades, previous prospective studies have reported that postoperative PF has an incidence of > 10%. Understanding the potential complications and early warning of these complications is important for the care of these patients.

## ACKNOWLEDGEMENTS

The authors thank all medical workers and patients involved in this study, including those involved in data collection and compilation.

## FOOTNOTES

**Author contributions:** Long ZD, Lu C, Xia XG, Chen B, Xing ZX, Bie L, Zhou P, Ma ZL, and Wang R designed the research study; Long ZD, Lu C, Xia XG, and Chen B performed the research; Xia XG, Chen B, and Xing ZX contributed new reagents and analytic tools; Long ZD, Lu C, Xia XG, Chen B, Xing ZX, Bie L, Zhou P, Ma ZL, and Wang R analyzed the data and wrote the manuscript; all authors have read and approve the final manuscript.

**Institutional review board statement:** This retrospective study was following the declaration of Helsinki, and was ethically reviewed and approved by the Institutional Ethics Committee of Jingzhou Hospital, No. 2021-JH005.

**Informed consent statement:** Since the patient information contained in this study was anonymous, written informed consent was not obtained from all participants.

**Conflict-of-interest statement:** All authors declare that there is no conflict of interest.

**Data sharing statement:** No additional data are available.

**Open-Access:** This article is an open-access article that was selected by an in-house editor and fully peer-reviewed by external reviewers. It is distributed in accordance with the Creative Commons Attribution NonCommercial (CC BY-NC 4.0) license, which permits others to distribute, remix, adapt, build upon this work non-commercially, and license their derivative works on different terms, provided the original work is properly cited and the use is non-commercial. See: <https://creativecommons.org/licenses/by-nc/4.0/>

**Country/Territory of origin:** China

**ORCID number:** Zhi-Da Long 0000-0002-6956-2567; Chao Lu 0000-0002-6236-1550; Xi-Gang Xia 0000-0002-4573-2387; Bo Chen 0000-0002-2017-1235; Zhi-Xiang Xing 0000-0002-1789-0078; Lei Bie 0000-0002-1078-2022; Peng Zhou 0000-0002-1456-1378; Zhong-Lin Ma 0000-0002-1287-0987; Rui Wang 0000-0002-6992-2287.

**S-Editor:** Chen YL

**L-Editor:** Kerr C

**P-Editor:** Chen YL

## REFERENCES

- 1 **Karim SAM**, Abdulla KS, Abdulkarim QH, Rahim FH. The outcomes and complications of pancreaticoduodenectomy (Whipple procedure): Cross sectional study. *Int J Surg* 2018; **52**: 383-387 [PMID: 29438817 DOI: 10.1016/j.ijsu.2018.01.041]
- 2 **Xiang Y**, Wu J, Lin C, Yang Y, Zhang D, Xie Y, Yao X, Zhang X. Pancreatic reconstruction techniques after pancreaticoduodenectomy: a review of the literature. *Expert Rev Gastroenterol Hepatol* 2019; **13**: 797-806 [PMID: 31282769 DOI: 10.1080/17474124.2019.1640601]
- 3 **Narayanan S**, Martin AN, Turrentine FE, Bauer TW, Adams RB, Zaydfudim VM. Mortality after pancreaticoduodenectomy: assessing early and late causes of patient death. *J Surg Res* 2018; **231**: 304-308 [PMID: 30278945 DOI: 10.1016/j.jss.2018.05.075]

- 4 **Kawaida H**, Kono H, Hosomura N, Amemiya H, Itakura J, Fujii H, Ichikawa D. Surgical techniques and postoperative management to prevent postoperative pancreatic fistula after pancreatic surgery. *World J Gastroenterol* 2019; **25**: 3722-3737 [PMID: [31391768](#) DOI: [10.3748/wjg.v25.i28.3722](#)]
- 5 **Wellner UF**, Brett S, Bruckner T, Limprecht R, Rossion I, Seiler C, Sick O, Wegener I, Hopt UT, Keck T; RECOPANC Trial Group. Pancreatogastrostomy versus pancreatojejunostomy for RECONstruction after partial PANCreatoduodenectomy (RECOPANC): study protocol of a randomized controlled trial U1111-1117-9588. *Trials* 2012; **13**: 45 [PMID: [22540372](#) DOI: [10.1186/1745-6215-13-45](#)]
- 6 **Chen BP**, Bennett S, Bertens KA, Balaa FK, Martel G. Use and acceptance of the International Study Group for Pancreatic Fistula (ISGPF) definition and criteria in the surgical literature. *HPB (Oxford)* 2018; **20**: 69-75 [PMID: [28927654](#) DOI: [10.1016/j.hpb.2017.08.022](#)]
- 7 **Fu SJ**, Shen SL, Li SQ, Hu WJ, Hua YP, Kuang M, Liang LJ, Peng BG. Risk factors and outcomes of postoperative pancreatic fistula after pancreaticoduodenectomy: an audit of 532 consecutive cases. *BMC Surg* 2015; **15**: 34 [PMID: [25887526](#) DOI: [10.1186/s12893-015-0011-7](#)]
- 8 **Akgul O**, Merath K, Mehta R, Hyer JM, Chakedis J, Wiemann B, Johnson M, Paredes A, Dillhoff M, Cloyd J, Pawlik TM. Postoperative Pancreatic Fistula Following Pancreaticoduodenectomy-Stratification of Patient Risk. *J Gastrointest Surg* 2019; **23**: 1817-1824 [PMID: [30478529](#) DOI: [10.1007/s11605-018-4045-x](#)]
- 9 **Callery MP**, Pratt WB, Kent TS, Chaikof EL, Vollmer CM Jr. A prospectively validated clinical risk score accurately predicts pancreatic fistula after pancreatoduodenectomy. *J Am Coll Surg* 2013; **216**: 1-14 [PMID: [23122535](#) DOI: [10.1016/j.jamcollsurg.2012.09.002](#)]
- 10 **You Y**, Han IW, Choi DW, Heo JS, Ryu Y, Park DJ, Choi SH, Han S. Nomogram for predicting postoperative pancreatic fistula. *HPB (Oxford)* 2019; **21**: 1436-1445 [PMID: [30982739](#) DOI: [10.1016/j.hpb.2019.03.351](#)]
- 11 **Mungroop TH**, van Rijssen LB, van Klaveren D, Smits FJ, van Woerden V, Linnemann RJ, de Pastena M, Klompmaier S, Marchegiani G, Ecker BL, van Dieren S, Bonsing B, Busch OR, van Dam RM, Erdmann J, van Eijck CH, Gerhards MF, van Goor H, van der Harst E, de Hingh IH, de Jong KP, Kazemier G, Luyer M, Shamali A, Barbaro S, Armstrong T, Takhar A, Hamady Z, Klaase J, Lips DJ, Molenaar IQ, Nieuwenhuijs VB, Rupert C, van Santvoort HC, Scheepers JJ, van der Schelling GP, Bassi C, Vollmer CM, Steyerberg EW, Abu Hilal M, Groot Koerkamp B, Besselink MG; Dutch Pancreatic Cancer Group. Alternative Fistula Risk Score for Pancreatoduodenectomy (a-FRS): Design and International External Validation. *Ann Surg* 2019; **269**: 937-943 [PMID: [29240007](#) DOI: [10.1097/SLA.0000000000002620](#)]
- 12 **Singh N**, Baby D, Rajguru JP, Patil PB, Thakkannavar SS, Pujari VB. Inflammation and cancer. *Ann Afr Med* 2019; **18**: 121-126 [PMID: [31417011](#) DOI: [10.4103/aam.aam\\_56\\_18](#)]
- 13 **Lontchi-Yimagou E**, Sobngwi E, Matsha TE, Kengne AP. Diabetes mellitus and inflammation. *Curr Diab Rep* 2013; **13**: 435-444 [PMID: [23494755](#) DOI: [10.1007/s11892-013-0375-y](#)]
- 14 **Hotamisligil GS**. Inflammation, metaflammation and immunometabolic disorders. *Nature* 2017; **542**: 177-185 [PMID: [28179656](#) DOI: [10.1038/nature21363](#)]
- 15 **Gasteiger S**, Primavesi F, Göbel G, Braunwarth E, Cardini B, Maglione M, Sopper S, Öfner D, Stättner S. Early Post-Operative Pancreatitis and Systemic Inflammatory Response Assessed by Serum Lipase and IL-6 Predict Pancreatic Fistula. *World J Surg* 2020; **44**: 4236-4244 [PMID: [32901324](#) DOI: [10.1007/s00268-020-05768-9](#)]
- 16 **van Hilst J**, Brinkman DJ, de Rooij T, van Dieren S, Gerhards MF, de Hingh IH, Luyer MD, Marsman HA, Karsten TM, Busch OR, Festen S, Heger M, Besselink MG; Dutch Pancreatic Cancer Group. The inflammatory response after laparoscopic and open pancreatoduodenectomy and the association with complications in a multicenter randomized controlled trial. *HPB (Oxford)* 2019; **21**: 1453-1461 [PMID: [30975599](#) DOI: [10.1016/j.hpb.2019.03.353](#)]
- 17 **LeCun Y**, Bengio Y, Hinton G. Deep learning. *Nature* 2015; **521**: 436-444 [PMID: [26017442](#) DOI: [10.1038/nature14539](#)]
- 18 **Bassi C**, Dervenis C, Butturini G, Fingerhut A, Yeo C, Izbicki J, Neoptolemos J, Sarr M, Traverso W, Buchler M; International Study Group on Pancreatic Fistula Definition. Postoperative pancreatic fistula: an international study group (ISGPF) definition. *Surgery* 2005; **138**: 8-13 [PMID: [16003309](#) DOI: [10.1016/j.surg.2005.05.001](#)]
- 19 **Bassi C**, Marchegiani G, Dervenis C, Sarr M, Abu Hilal M, Adham M, Allen P, Andersson R, Asbun HJ, Besselink MG, Conlon K, Del Chiaro M, Falconi M, Fernandez-Cruz L, Fernandez-Del Castillo C, Fingerhut A, Friess H, Gouma DJ, Hackert T, Izbicki J, Lillemoe KD, Neoptolemos JP, Olah A, Schulick R, Shrikhande SV, Takada T, Takaori K, Traverso W, Vollmer CR, Wolfgang CL, Yeo CJ, Salvia R, Buchler M; International Study Group on Pancreatic Surgery (ISGPS). The 2016 update of the International Study Group (ISGPS) definition and grading of postoperative pancreatic fistula: 11 Years After. *Surgery* 2017; **161**: 584-591 [PMID: [28040257](#) DOI: [10.1016/j.surg.2016.11.014](#)]
- 20 **Miot HA**. Anomalous values and missing data in clinical and experimental studies. *J Vasc Bras* 2019; **18**: e20190004 [PMID: [31320882](#) DOI: [10.1590/1677-5449.190004](#)]
- 21 **Fan J**, Lv J. A Selective Overview of Variable Selection in High Dimensional Feature Space. *Stat Sin* 2010; **20**: 101-148 [PMID: [21572976](#)]
- 22 **Deo RC**. Machine Learning in Medicine. *Circulation* 2015; **132**: 1920-1930 [PMID: [26572668](#) DOI: [10.1161/CIRCULATIONAHA.115.001593](#)]
- 23 **Peng YP**, Zhu XL, Yin LD, Zhu Y, Wei JS, Wu JL, Miao Y. Risk factors of postoperative pancreatic fistula in patients after distal pancreatectomy: a systematic review and meta-analysis. *Sci Rep* 2017; **7**: 185 [PMID: [28298641](#) DOI: [10.1038/s41598-017-00311-8](#)]
- 24 **Han IW**, Cho K, Ryu Y, Shin SH, Heo JS, Choi DW, Chung MJ, Kwon OC, Cho BH. Risk prediction platform for pancreatic fistula after pancreatoduodenectomy using artificial intelligence. *World J Gastroenterol* 2020; **26**: 4453-4464 [PMID: [32874057](#) DOI: [10.3748/wjg.v26.i30.4453](#)]
- 25 **Guo CX**, Shen YN, Zhang Q, Zhang XZ, Wang JL, Gao SL, Lou JY, Que RS, Ma T, Liang TB, Bai XL. Prediction of postoperative pancreatic fistula using a nomogram based on the updated definition. *Ann Surg Treat Res* 2020; **98**: 72-81 [PMID: [32051815](#) DOI: [10.4174/astr.2020.98.2.72](#)]
- 26 **Tajima Y**, Kawabata Y, Hirahara N. Preoperative imaging evaluation of pancreatic pathologies for the objective prediction of pancreatic fistula after pancreaticoduodenectomy. *Surg Today* 2018; **48**: 140-150 [PMID: [28421350](#) DOI: [10.1007/s00595-017-1529-3](#)]

- 27 **Rettig TC**, Verwijmeren L, Dijkstra IM, Boerma D, van de Garde EM, Noordzij PG. Postoperative Interleukin-6 Level and Early Detection of Complications After Elective Major Abdominal Surgery. *Ann Surg* 2016; **263**: 1207-1212 [PMID: 26135695 DOI: 10.1097/SLA.0000000000001342]
- 28 **Strieter RM**, Burdick MD, Mestas J, Gomperts B, Keane MP, Belperio JA. Cancer CXC chemokine networks and tumour angiogenesis. *Eur J Cancer* 2006; **42**: 768-778 [PMID: 16510280 DOI: 10.1016/j.ejca.2006.01.006]
- 29 **Balestrieri ML**, Balestrieri A, Mancini FP, Napoli C. Understanding the immunoangiostatic CXC chemokine network. *Cardiovasc Res* 2008; **78**: 250-256 [PMID: 18252760 DOI: 10.1093/cvr/cvn029]
- 30 **Ocana A**, Nieto-Jiménez C, Pandiella A, Templeton AJ. Neutrophils in cancer: prognostic role and therapeutic strategies. *Mol Cancer* 2017; **16**: 137 [PMID: 28810877 DOI: 10.1186/s12943-017-0707-7]
- 31 **Ménétrier-Caux C**, Ray-Coquard I, Blay JY, Caux C. Lymphopenia in Cancer Patients and its Effects on Response to Immunotherapy: an opportunity for combination with Cytokines? *J Immunother Cancer* 2019; **7**: 85 [PMID: 30922400 DOI: 10.1186/s40425-019-0549-5]
- 32 **Blankenstein T**, Coulie PG, Gilboa E, Jaffee EM. The determinants of tumour immunogenicity. *Nat Rev Cancer* 2012; **12**: 307-313 [PMID: 22378190 DOI: 10.1038/nrc3246]
- 33 **Ellis RJ**, Brock Hewitt D, Liu JB, Cohen ME, Merkow RP, Bentrem DJ, Bilimoria KY, Yang AD. Preoperative risk evaluation for pancreatic fistula after pancreaticoduodenectomy. *J Surg Oncol* 2019; **119**: 1128-1134 [PMID: 30951614 DOI: 10.1002/jso.25464]
- 34 **Rigatti SJ**. Random Forest. *J Insur Med* 2017; **47**: 31-39 [PMID: 28836909 DOI: 10.17849/insm-47-01-31-39.1]



Published by **Baishideng Publishing Group Inc**  
7041 Koll Center Parkway, Suite 160, Pleasanton, CA 94566, USA

**Telephone:** +1-925-3991568

**E-mail:** [bpgoffice@wjgnet.com](mailto:bpgoffice@wjgnet.com)

**Help Desk:** <https://www.f6publishing.com/helpdesk>

<https://www.wjgnet.com>

