

World Journal of *Gastroenterology*

World J Gastroenterol 2022 November 7; 28(41): 5893-6001



REVIEW

- 5893** Esophageal lichen planus: Current knowledge, challenges and future perspectives
Decker A, Schauer F, Lazaro A, Monasterio C, Schmidt AR, Schmitt-Graeff A, Kreisel W
- 5910** Epidemiology of liver cirrhosis and associated complications: Current knowledge and future directions
Liu YB, Chen MK

ORIGINAL ARTICLE

Retrospective Study

- 5931** Enhanced segmentation of gastrointestinal polyps from capsule endoscopy images with artifacts using ensemble learning
Zhou JX, Yang Z, Xi DH, Dai SJ, Feng ZQ, Li JY, Xu W, Wang H
- 5944** Transjugular intrahepatic portosystemic shunt *vs* conservative treatment for recurrent ascites: A propensity score matched comparison
Philipp M, Blattmann T, Bienert J, Fischer K, Hausberg L, Kröger JC, Heller T, Weber MA, Lamprecht G
- 5957** Feasibility of same-day discharge following endoscopic submucosal dissection for esophageal or gastric early cancer
Wang J, Li SJ, Yan Y, Yuan P, Li WF, Cao CQ, Chen WG, Chen KN, Wu Q
- 5968** Prognostic analysis of patients with combined hepatocellular-cholangiocarcinoma after radical resection: A retrospective multicenter cohort study
Zhang G, Chen BW, Yang XB, Wang HY, Yang X, Xie FC, Chen XQ, Yu LX, Shi J, Lu YY, Zhao HT
- 5982** High incidence combination of multiple primary malignant tumors of the digestive system
Yang XB, Zhang LH, Xue JN, Wang YC, Yang X, Zhang N, Liu D, Wang YY, Xun ZY, Li YR, Sun HS, Zhao LJ, Zhao HT

CASE REPORT

- 5993** Collagenous gastritis in a young Chinese woman: A case report
Zheng QH, Hu J, Yi XY, Xiao XH, Zhou LN, Li B, Bo XT

ABOUT COVER

Editorial Board Member of *World Journal of Gastroenterology*, Heitor Siffert Pereira de Souza, MD, PhD, Full Professor, Department of Clinical Medicine, School of Medicine, Federal University of Rio de Janeiro, Rio de Janeiro 21941-913, Brazil. heitor.souza@gmail.com

AIMS AND SCOPE

The primary aim of *World Journal of Gastroenterology* (WJG, *World J Gastroenterol*) is to provide scholars and readers from various fields of gastroenterology and hepatology with a platform to publish high-quality basic and clinical research articles and communicate their research findings online. WJG mainly publishes articles reporting research results and findings obtained in the field of gastroenterology and hepatology and covering a wide range of topics including gastroenterology, hepatology, gastrointestinal endoscopy, gastrointestinal surgery, gastrointestinal oncology, and pediatric gastroenterology.

INDEXING/ABSTRACTING

The WJG is now abstracted and indexed in Science Citation Index Expanded (SCIE, also known as SciSearch®), Current Contents/Clinical Medicine, Journal Citation Reports, Index Medicus, MEDLINE, PubMed, PubMed Central, Scopus, Reference Citation Analysis, China National Knowledge Infrastructure, China Science and Technology Journal Database, and Superstar Journals Database. The 2022 edition of Journal Citation Reports® cites the 2021 impact factor (IF) for WJG as 5.374; IF without journal self cites: 5.187; 5-year IF: 5.715; Journal Citation Indicator: 0.84; Ranking: 31 among 93 journals in gastroenterology and hepatology; and Quartile category: Q2. The WJG's CiteScore for 2021 is 8.1 and Scopus CiteScore rank 2021: Gastroenterology is 18/149.

RESPONSIBLE EDITORS FOR THIS ISSUE

Production Editor: Ying-Yi Yuan; Production Department Director: Xiang Li; Editorial Office Director: Jia-Ru Fan.

NAME OF JOURNAL

World Journal of Gastroenterology

ISSN

ISSN 1007-9327 (print) ISSN 2219-2840 (online)

LAUNCH DATE

October 1, 1995

FREQUENCY

Weekly

EDITORS-IN-CHIEF

Andrzej S Tarnawski

EDITORIAL BOARD MEMBERS

<http://www.wjgnet.com/1007-9327/editorialboard.htm>

PUBLICATION DATE

November 7, 2022

COPYRIGHT

© 2022 Baishideng Publishing Group Inc

INSTRUCTIONS TO AUTHORS

<https://www.wjgnet.com/bpg/gerinfo/204>

GUIDELINES FOR ETHICS DOCUMENTS

<https://www.wjgnet.com/bpg/GerInfo/287>

GUIDELINES FOR NON-NATIVE SPEAKERS OF ENGLISH

<https://www.wjgnet.com/bpg/gerinfo/240>

PUBLICATION ETHICS

<https://www.wjgnet.com/bpg/GerInfo/288>

PUBLICATION MISCONDUCT

<https://www.wjgnet.com/bpg/gerinfo/208>

ARTICLE PROCESSING CHARGE

<https://www.wjgnet.com/bpg/gerinfo/242>

STEPS FOR SUBMITTING MANUSCRIPTS

<https://www.wjgnet.com/bpg/GerInfo/239>

ONLINE SUBMISSION

<https://www.f6publishing.com>



Collagenous gastritis in a young Chinese woman: A case report

Qing-Hua Zheng, Jie Hu, Xiao-Yuan Yi, Xu-Hua Xiao, Li-Na Zhou, Bin Li, Xiao-Tong Bo

Specialty type: Gastroenterology and hepatology

Provenance and peer review: Unsolicited article; Externally peer reviewed.

Peer-review model: Single blind

Peer-review report's scientific quality classification

Grade A (Excellent): 0
Grade B (Very good): B, B, B
Grade C (Good): 0
Grade D (Fair): 0
Grade E (Poor): 0

P-Reviewer: Ko J, South Korea; Okasha H, Egypt

Received: July 18, 2022

Peer-review started: July 18, 2022

First decision: September 8, 2022

Revised: September 21, 2022

Accepted: October 19, 2022

Article in press: October 19, 2022

Published online: November 7, 2022



Qing-Hua Zheng, Jie Hu, Xiao-Yuan Yi, Xu-Hua Xiao, Li-Na Zhou, Bin Li, Xiao-Tong Bo, Department of Gastroenterology, Affiliated Hospital of Guilin Medical University, Guilin 541001, Guangxi Province, China

Corresponding author: Xiao-Tong Bo, MMed, Associate Chief Physician, Department of Gastroenterology, Affiliated Hospital of Guilin Medical University, No. 15 Lequn Road, Xiufeng District, Guilin 541001, Guangxi Province, China. b_xt@foxmail.com

Abstract

BACKGROUND

Collagenous gastritis (CG) is a rare condition whose pathogenesis may be related to immune abnormalities. We report a case of CG from China.

CASE SUMMARY

A 24-year-old woman presented with recurrent abdominal distension and discomfort for 3 mo. Upper gastrointestinal endoscopy found diffuse nodular elevation-depression changes in the mucosa of the entire gastric corpus. Endoscopic ultrasound showed predominant involvement of the lamina propria and submucosa, and computed tomography imaging showed mild enhancement of the gastric wall. Pathological histology revealed that the thickness of the subepithelial collagen band was about 40 μ m, and the Masson trichrome staining result was positive and the Congo red staining result was negative. This case is consistent with the child-adolescent type of CG.

CONCLUSION

Serum pepsinogen I, pepsinogen II, pepsinogen I/II ratio, and gastrin-17 may be potential non-invasive monitoring markers. Currently, treatments for CG vary, and the likely prognosis is unknown. Individual cases of gastric cancer in patients with CG have been reported.

Key Words: Endoscopy; Endoscopic ultrasound; Collagenous gastritis; Hematoxylin and eosin staining; Masson's trichrome staining; Case report

©The Author(s) 2022. Published by Baishideng Publishing Group Inc. All rights reserved.

Core Tip: We report a case of collagenous gastritis. We introduce the clinical features, findings of esophagogastroduodenoscopy and endoscopic ultrasound, and response to treatment in this young female patient.

Citation: Zheng QH, Hu J, Yi XY, Xiao XH, Zhou LN, Li B, Bo XT. Collagenous gastritis in a young Chinese woman: A case report. *World J Gastroenterol* 2022; 28(41): 5993-6001

URL: <https://www.wjgnet.com/1007-9327/full/v28/i41/5993.htm>

DOI: <https://dx.doi.org/10.3748/wjg.v28.i41.5993>

INTRODUCTION

Collagenous gastritis (CG) is a rare condition characterized histopathologically by the deposition of collagenous bands under the mucosal epithelium and infiltration of inflammatory cells within the lamina propria of the mucosa. It is more prevalent in children and adolescents. The pathogenesis and clinical outcome remain unclear.

The first case of CG was reported in 1989 by Colletti and Trainer in the United States[1]. Since then, the literature on CG has predominantly included case reports. A search of PubMed using the keyword "collagenous gastritis" revealed < 100 reported cases. The first and second cases of CG in China were respectively reported in 2010[2] and 2018[3]. We now report the third Chinese case of CG diagnosed in 2020 at the Affiliated Hospital of Guilin Medical University.

CASE PRESENTATION

Chief complaints

A 24-year-old female patient presented to our outpatient service in June 2020 with the complaints of recurrent abdominal distension and discomfort for 3 mo.

History of present illness

The patient reported feeling epigastric distension after eating that could last anywhere from 30 min to 12 h, with no other significant discomfort.

Personal and family history

Following hospital admission, the patient denied a history of allergies, asthma, and pet exposure. Both her father and mother were living and healthy.

Physical examination

The physical examination on admission revealed stable vital signs, no yellow staining of the skin or sclera, and no enlargement of superficial lymph nodes. Cardiopulmonary and abdominal examinations showed no abnormalities.

Laboratory examinations

Laboratory tests revealed a normal blood count, liver function, and renal function and normal carcinoembryonic antigen, cancer antigen 125, cancer antigen 19-9, and alpha-fetoprotein values. Her liver fibrosis test was normal, and she had normal levels of immunoglobulins immunoglobulin (Ig) A, IgM, and IgG, as well as serum type III procollagen, type IV collagen, laminin, and hyaluronic acid. Her serum pepsinogen (PG) I value was 133.41 $\mu\text{m/L}$, her PG II value was elevated at 25.99 $\mu\text{m/L}$, her pepsinogen I/II ratio (PGR) value was reduced at 5.13, and her gastrin-17 value was 54.01 pmol/L. The ^{13}C urea breath test negative, the allergen assay was negative, and her extractable nuclear antigen antibodies were negative.

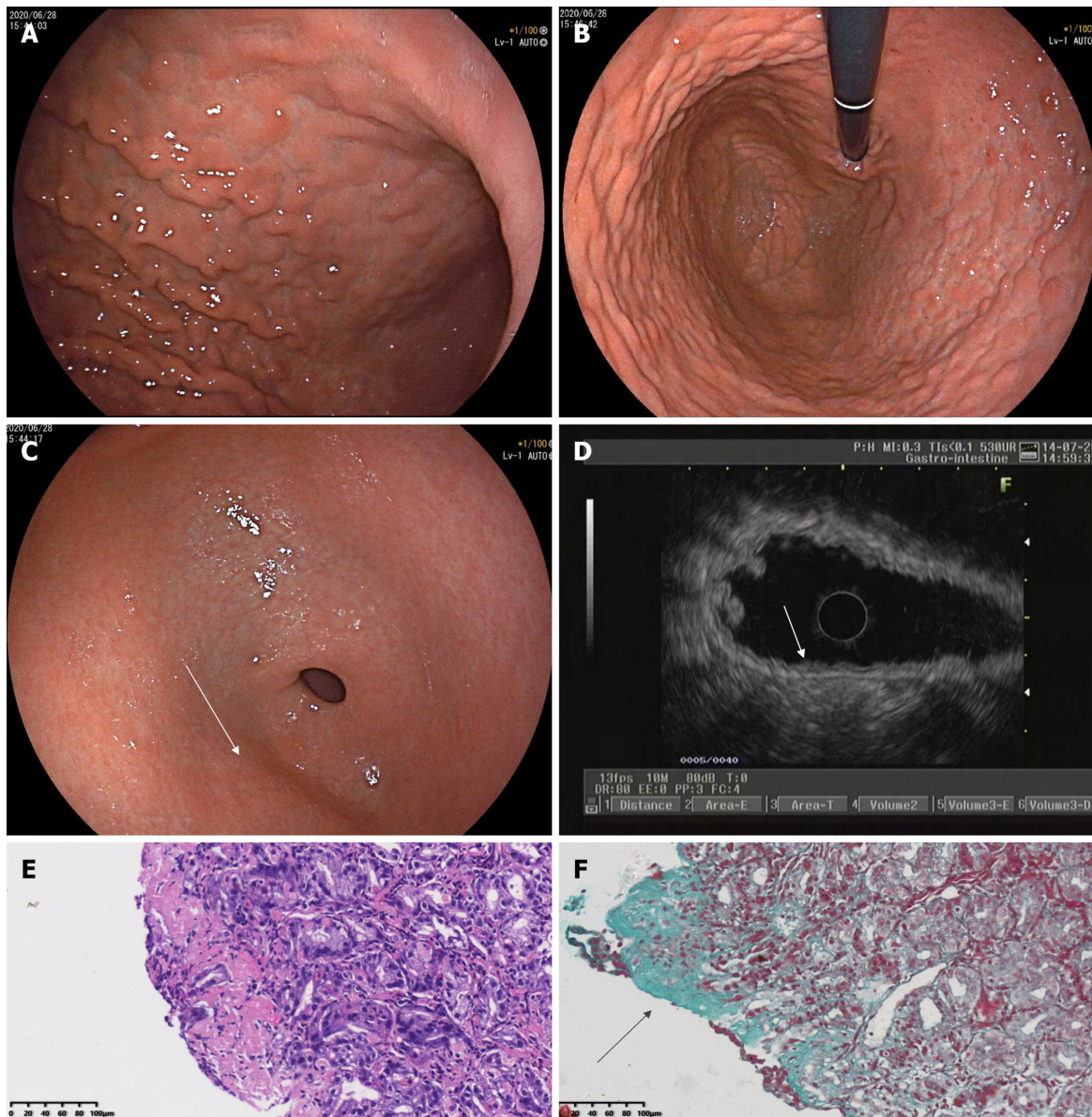
Imaging examinations

Esoophagogastroduodenoscopy (EGD) performed on June 28, 2020 revealed diffuse nodular elevation-depression changes in the mucosa of the entire gastric corpus (Figure 1A and B).

Nodular reddening-like changes were seen in the anterior wall of the gastric antrum (Figure 1C). Then, endoscopic ultrasound (EUS) completed in July 2020 suggested an intact 5-layer structure of the gastric corpus wall with hypoechoic changes in the mucosal layer (Figure 1D). Histopathology reported moderate chronic inflammation with erosion and mild activity (Figure 1E).

In May 10, 2021, EGD confirmed that no mass or ulcer could be found in the esophagus or duodenum. The mucosa of the angulus was smooth, while the mucosa of the gastric corpus and fundus appeared uneven, with elevation-depression changes (Figure 2A).

Magnifying endoscopy with blue laser imaging (ME-BLI) showed clear borders of the elevation, regular arrangement of the marginal crypt epithelium (MCE), and widening of the microvascular vessels. The MCE in the depression was indistinct, and the irregular microvascular pattern showed dendritic changes with a constant ductal diameter, and the microvessels here were thinner than those of



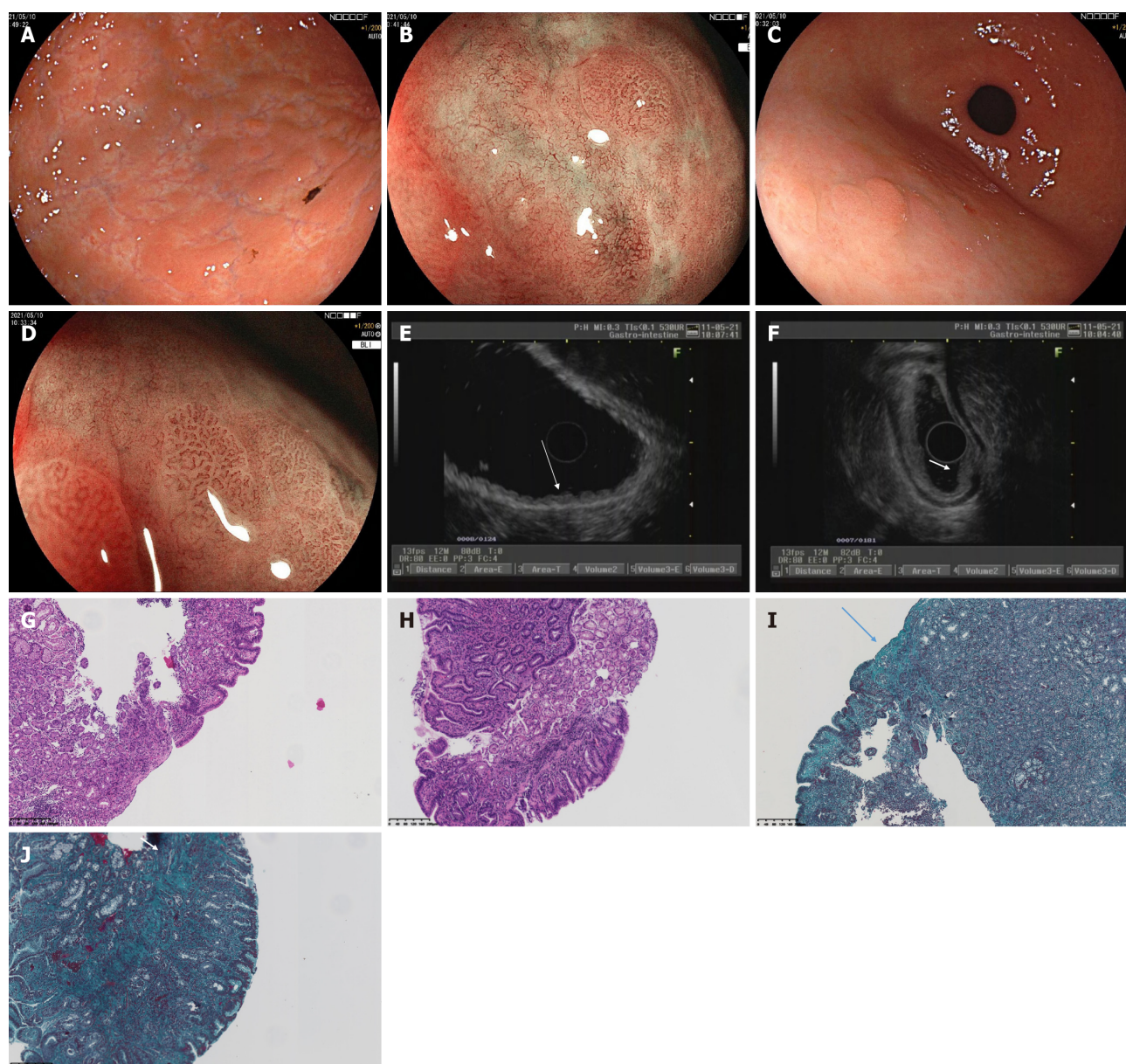
DOI: 10.3748/wjg.v28.i41.5993 Copyright ©The Author(s) 2022.

Figure 1 Findings of white light endoscopy, endoscopic ultrasound, and histopathology in 2020. A: Esophagogastroduodenoscopy (EGD) in 2020 in a forward endoscopic view showed diffuse nodular elevation-depression changes in the mucosa of the entire gastric corpus; B: EGD in 2020 (in a retroflexed endoscopic view) showed diffuse nodular elevation-depression changes in the mucosa of the entire gastric corpus; C: EGD in 2020 showed nodular reddening-like changes in the anterior wall of the gastric antrum; D: Endoscopic ultrasound in 2020 showed an intact five-layer structure of the gastric corpus wall with hypoechoic changes in the mucosal layer, which is different from the echoes of normal mucosal layer; E: A biopsy of the gastric corpus in 2020 reported moderate chronic inflammation with erosion and mild activity; F: Masson staining of a gastric corpus specimen in 2020 showed collagen bands (blue areas).

the elevated area of the gastric antrum (Figure 2B). Nodular reddening-like changes were seen in the anterior wall of the gastric antrum (Figure 2C). The findings of ME-BLI were similar to those from the gastric corpus (Figure 2D). EUS showed that the mucosal layer of the gastric corpus was thickened, appearing slightly hypoechoic, with no thickening of its posterior submucosal layer (Figure 2E).

The normal structures of the mucosa, muscularis mucosa, and submucosa at the elevation of the gastric antrum had disappeared and were replaced by inhomogeneous hypoechoic changes, with the muscularis propria and serosa still intact (Figure 2F). Colonoscopy confirmed that the mucosa of the whole colon, rectum, and terminal ileum was smooth, and no mass or ulcer was visible. Computed tomography showed a relative thickening of the gastric wall in the gastric corpus and antrum, and mild enhancement was seen in the arterial phase (Figure 3A and B).

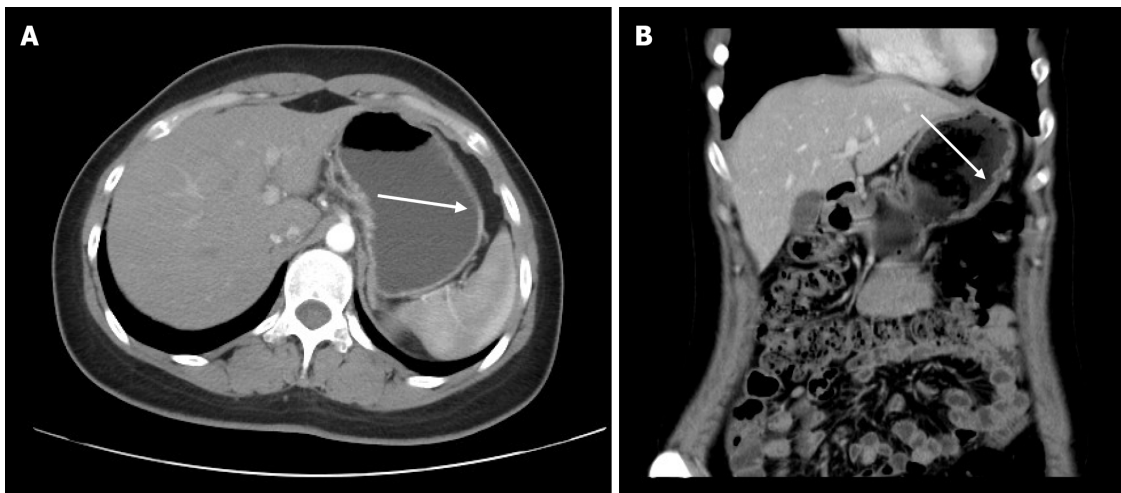
Histopathological findings of the gastric fundus, body, and antrum biopsies included moderate chronic inflammation with erosion, mild activity, a higher number of lymphocytes, a few neutrophils and eosinophils [20-30/high-powered field (HPF)] infiltrating the interstitium, multifocal lymphoid tissue hyperplasia, and negative Congo red staining (Figure 2G and H). Collagenous bands deposited under the mucosal epithelium (about 40 μ m) were seen (Figure 2I and J). Angulus biopsy revealed moderate chronic inflammation with erosion and positive Masson's trichrome staining. The bulbous,



DOI: 10.3748/wjg.v28.i41.5993 Copyright ©The Author(s) 2022.

Figure 2 Findings of white light endoscopy, magnifying endoscopy, endoscopic ultrasound, and histopathology in 2021. A: Esophago-gastroduodenoscopy (EGD) in 2021 showed that the mucosa of the angulus was smooth, while the mucosa of the gastric corpus and fundus appeared uneven, with elevation-depression changes; B: Magnifying endoscopy with blue laser imaging (ME-BLI) in 2021 showed regular arrangement of the marginal crypt epithelium (MCE) and widened microvessels in the elevated area of the corpus, and dendritic irregular microvascular pattern and unremarkable MCE in the depressed area of the corpus; C: EGD in 2021 showed nodular reddening-like changes in the anterior wall of the gastric antrum, which is similar to those in 2020; D: ME-BLI in 2021 showed similar findings in the gastric antrum to those in the corpus; E: Endoscopic ultrasound (EUS) in 2021 showed that the mucosal layer of the gastric corpus was thickened, exhibiting slightly hypoechoic and wavy changes; F: EUS in 2021 showed that the normal five-layer structures in the gastric antrum were replaced by inhomogeneous hypoechoic changes; G: Histopathological findings of the gastric corpus in 2021 (corresponding to Figure 2A and B) included moderate chronic inflammation with erosion, mild activity, a higher number of lymphocytes, and a few neutrophils and eosinophils (20-30/high-powered fields); H: Histopathological findings of the gastric antrum in 2021 (corresponding to Figure 2C and D) showed moderate chronic inflammation with erosion and mild activity; I: Masson staining of a gastric corpus specimen obtained in 2021 (corresponding to Figure 2G). The arrow indicates the collagen band, which had a thickness of about 40 μ m; J: Masson staining of a gastric antrum specimen obtained in 2021 (corresponding to Figure 2H). The arrow also indicates the collagen band.

terminal ileum, and ascending colon biopsies showed moderate mucosal chronic inflammation with erosion, mild activity, focal lymphocytosis, and positive Masson's trichome staining. The rectal biopsy showed moderate mucosal chronic inflammation with erosion and positive Masson's trichome staining. Furthermore, complementary Masson staining of the patient's gastric corpus biopsy specimen from June 28, 2020 revealed the presence of collagenous band deposited under the epithelium (approximately 40 μ m) (Figure 1F).



DOI: 10.3748/wjg.v28.i41.5993 Copyright ©The Author(s) 2022.

Figure 3 Computed tomography findings in 2021. A: Computed tomography (CT) in 2021 showed a relative thickening of the gastric wall in the gastric corpus and antrum, and mild enhancement was seen in the arterial phase; B: Coronal CT in 2021 showed thickening of the gastric wall of the corpus, as indicated by the arrow.

FINAL DIAGNOSIS

The patient was diagnosed as having CG.

TREATMENT

Esomeprazole (20 mg every day, taken 30 min before breakfast) and mosapride (5 mg three times a day, *i.e.*, once before each of all 3 meals) were given orally for 2 wk, and the patient's abdominal distension was subsequently relieved. However, the patient continued to experience intermittent abdominal distension for > 6 mo thereafter, with episodes lasting for the same duration as before, while taking esomeprazole and mosapride irregularly. The patient was then hospitalized at the Affiliated Hospital of Guilin Medical University from May 9 to May 12, 2021.

Treatment with oral glucocorticoids was initiated for the patient in June 2021. Thirty milligrams daily of prednisone acetate was given for 2 wk, and then reduced by 5 mg every 2 wk thereafter and finally discontinued when the dose reached 5 mg daily and was maintained as such for 2 wk. During the 8 wk of treatment, the patient continued to present with intermittent abdominal distention, lasting 12 h in severe episodes, and she was given 5 mg of oral mosapride three times daily 30 min before meals. A re-examination showed that her PG I value was 105.21 $\mu\text{m/L}$, her PG II value was elevated to 24.3 $\mu\text{m/L}$, her PGR value was decreased to 4.33, and her gastrin-17 value was 46.99 pmol/L.

OUTCOME AND FOLLOW-UP

After treatment, the patient's abdominal distension was relieved for 2-3 d every week. Laboratory tests performed in October 2021 revealed that her PG I value was 118 $\mu\text{m/L}$, her PG II value was elevated to 33.74 $\mu\text{m/L}$, her PGR value was decreased to 3.5, and her gastrin-17 value was elevated to 39.69 pmol/L. As of November 2021, the patient was still undergoing follow-up (Table 1).

DISCUSSION

Pathology and pathogenesis

The pathology is characterized by a deposited collagen band with a thickness of > 10 μm under the epithelium, with an average thickness of 30 μm and a maximum thickness of up to 120 μm [4]. Inflammatory cell infiltration is seen in the lamina propria of the mucosa. Infiltrating inflammatory cells include lymphocytes, plasma cells, monocytes, and eosinophils. Collagenous gastritis can be classified as eosinophilic, lymphocytic, and atrophic according to the type of infiltrated cells. The main criteria for these types are as follows: Eosinophils in the lamina propria > 30/HPF (eosinophilic type); lymphocytes > 25/HPF (lymphocytic type); and a reduction in glands, a reduction in specialized cells such as parietal

Table 1 Timeline

Date	Description
June 2020	First visit, chief complaints: Recurrent abdominal distension and discomfort for 3 mo
June 2020	1 st EGD + pathological histology
July 2020	1 st EUS
July 2020	Esomeprazole and mosapride for 2 wk; abdominal distension subsequently relieved
Late 2020 to first half of 2021	Continued intermittent abdominal distension for > 6 mo
May 9 to May 12, 2021	Hospitalized; PG I, PG II, and PGR tested; 2 nd EGD + pathological histology; ME-BLI; 2 nd EUS
June 2021	Oral glucocorticoids for 8 wk and tapered; PG I, PG II, and PGR retested
October 2021	PG I, PG II, and PGR retested

EGD: Esophagogastroduodenoscopy; EUS: Endoscopic ultrasound; ME-BLI: Magnifying endoscopy with blue laser imaging; PGR: Pepsinogen I/II ratio.

cells and chief cells, pyloric gland metaplasia, and hyperplasia of smooth muscle in the lamina propria of the mucosa (atrophic type). The same case may contain just one or all of these types. Considering special staining in addition to Masson's trichrome staining, tenascin positivity in immunohistochemistry may also be a characteristic indicator[5]. In addition to the stomach, the disease may include collagenous stomatitis and collagenous enteritis, depending on the site of onset, and these three locations are currently considered to be different sites of the same disease.

The pathogenesis of CG is unclear. Some pathological findings suggest an association with immune abnormalities. For example, signs of local immune activation were detected in some specimens, such as overexpression of human leucocyte antigen DR in epithelial cells, increased CD3⁺ intradermal lymphocytes, and CD25⁺ cells found in the lamina propria[6], as well as a large number of IgG4-positive plasma cells that failed to confirm an association with IgG4-related disease[5]. The histological changes in collagenous gastritis may be caused by a local immune response. In a few patient specimens, collagen bands can be isolated from type III and type IV collagen fibers. During the repair process, type III collagen is released by subepithelial fibroblasts[5]. Specimens were also found to be positive for tenascin, a marker suggestive of cell proliferation and migration[5]. Therefore, collagen synthesis in collagenous gastritis is a reparative response. In the pathogenesis of collagenous gastritis, an association with reduced serum IgA levels has also been reported[7].

Clinical features

Most of the CG studies reported so far are single case reports and retrospective analyses, lacking large sample data. Cases of CG have been documented mainly in Europe, the United States, and Japan. Women are more commonly afflicted than men, and the age of patients ranges from 7-85 years[8,9]. Clinical symptoms include abdominal pain, abdominal distension, diarrhea, nausea, vomiting, gastrointestinal bleeding, weight loss, anemia, fatigue, retrosternal pain, dyspepsia, perforation[10], dysphagia[11], and constipation.

Lagorce-Pages *et al*[4] classified CG into child-adolescent type and adult type. The child-adolescent type occurs mainly in early adolescence, where inflammation is usually limited to the stomach and anemia and abdominal pain are the main symptoms. The adult type often combines with collagenous enteritis, which is characterized by chronic watery diarrhea. CG and collagenous colitis exist on a clinical spectrum, with the difference being the site of involvement of the GI tract.

The typical endoscopic feature of collagen gastritis is the presence of mucosal nodules. These nodules vary in size and are often diffuse in the gastric corpus and antrum, with their size and number depending upon the severity of the inflammation. Endoscopic manifestations also include mucosal erythema, erosion, and exudation. The endoscopic presentation differs between pediatric and adult patients. Pediatric and adolescent patients usually present with gastric nodules, whereas adult patients often present with mucosal erythema, atrophy, and relatively uncommon nodules[9]. In image-enhanced endoscopy, glandular duct structures are seen on the surface of the nodules under magnifying narrow-band imaging, and microvascular thinning and tortuosity are seen in the structureless area[12,13].

Patients can also have other co-morbidities, including *Helicobacter pylori* infection[9], human immunodeficiency virus infection combined with gastric Kaposi's sarcoma[14], and Sjögren's syndrome[15].

Our case is a young female patient who presented with abdominal distension as the main manifestation, without obvious symptoms of anemia, abdominal pain, and diarrhea. Pathological findings supported the idea that the inflammation was limited to her stomach only, and colonoscopy and biopsy showed no intestinal involvement, consistent with the child-adolescent type. The

pathological histology of this case in our hospital showed the presence of a higher number of eosinophilic infiltrates in the lamina propria, consistent with the eosinophilic type. Endoscopy showed a depressed lesion surrounding the elevation of the gastric corpus and fundus greater curvature, with a structureless area in the depression under image-enhanced endoscopy and thinning microvessels, similar to the findings observed by Kawasaki *et al*[12] using magnifying narrow-band imaging in the gastric corpus.

EGD at both our hospital and Hangzhou No. 1 Hospital[3] showed redness on the elevation of the gastric antrum, and biopsy suggested a collagen deposition band of $> 10 \mu\text{m}$. A routine biopsy of the gastric angulus with a smooth surface mucosa failed to find a band of collagen deposition at our hospital, and it was hypothesized that the CG inflammation might be multifocal and discontinuously distributed. The EUS findings in this case are not exactly the same as those reported previously in China [3]. The similarity between these cases is that the lesion of the gastric antrum is a hypoechoic replacement of normal structures; however, the difference is that a rough and swollen mucosa with nodular elevation of the gastric corpus was seen under white-light in the case at Hangzhou First Hospital[3], which corresponds to thickening of the muscularis mucosa layer to the submucosal layer with an unclear boundary and low echoes, while, using EGD at our hospital, we found depressed lesions surrounding the elevated ones in the gastric corpus, which corresponds to the presence of five layers of the gastric wall with clear boundaries, as seen by EUS. The mucosal elevation under white-light endoscopy in the present case showed slightly hypoechoic thickening changes under EUS with no thickening of the posterior submucosa.

The white-light endoscopic findings in 2020 and 2021 were similar, both in the gastric corpus and in the antrum. In 2021, the white-light endoscopic findings were different in the gastric corpus and antrum, with elevation-depression changes in the gastric corpus and nodular reddening-like changes in the gastric antrum. EUS findings were also different in the gastric corpus and the gastric antrum. Only the mucosa was involved in the gastric corpus, while the mucosa, muscularis mucosa, and submucosa were all involved in the gastric antrum.

Considering the white-light endoscopic and EUS images, it was presumed that the development of CG inflammation might be progressively from the mucosal layer to the submucosal layer, and the progression of lesions in the gastric corpus and antrum might not parallel each other. The fact that the lesion is hypoechoic might be a EUS change of CG.

Management, follow-up, and prognosis

There are a number of treatments available for CG, some of which are merely symptomatic. H2 receptor antagonists or proton pump inhibitors, aluminum, iron supplementation in patients with anemia, a gluten-free diet in patients with celiac disease[16], glucocorticoids (prednisone[2,8,17], budesonide), other drugs including salicylic acid preparations such as mesalazine and salazosulfapyridine, and parenteral nutrition[9] have been used with varying degrees of efficacy according to different reports.

We gave our patient esomeprazole and mosapride successively, but she had no relief from her symptoms. Then, she was given prednisone acetate for 8 wk according to the treatment protocol for eosinophilic gastritis, and there was no significant relief of her abdominal distension.

The prognosis of CG at follow-up varies significantly, with some patients having reduced or even no collagen deposition and some experiencing recurrent symptoms[9]. The first reported CG case had unremarkable changes in collagen deposition during 12 years of follow-up[18] and showed mild dysplasia. One case of gastric adenocarcinoma positive for Epstein-Barr virus was confirmed after EGD follow-up 8 years after the diagnosis of collagenous gastritis in a patient with IgM reduction[19]. The duration of the follow-up interval and the endpoint are currently unclear.

At present, most facilities use EGD as a follow-up tool, but EUS can clearly identify all layers of the gastric wall, which helps to determine the depth of lesion involvement and is superior to EGD. The hypoechoic lesion may be an EUS change of CG. However, the availability of other non-invasive tests as tools of follow-up has not been clinically reported. The biochemical indices of PG I, PG II, PGR, and gastrin-17 in this patient in our hospital were consistent with atrophic gastritis, but the blood eosinophil and lymphocyte counts, IgA, type III procollagen, and collagen type IV findings were not abnormal. The patient continued to have episodes of abdominal distension after treatment with glucocorticoids, and the results of PG I, PG II, PGR, and gastrin-17 on several retests were abnormal, suggesting that the values obtained by this test may parallel the condition. PG I, PG II, PGR, and gastrin-17 may be used as biochemical indicators for disease treatment and follow-up. As of November 2021, the patient is still being followed up with.

CONCLUSION

In addition to histopathology, diffuse nodular elevation-depression under white-light endoscopy, hypoechoic changes in the lamina propria and submucosa under EUS, and tests of serum pepsinogen I, pepsinogen II, PGR, and gastrin-17 may be helpful in the diagnosis of CG. There is a lack of specific treatment for CG.

FOOTNOTES

Author contributions: Zheng QH performed the Eesophagogastrroduodenoscopy and endoscopic ultrasound, made the clinical diagnosis and treatment plan, and wrote the manuscript; Hu J performed the histopathological diagnosis; Yi XY collected the clinical data and performed the follow-up; Xiao XH completed the magnifying endoscopy; Zhou LN helped the endoscopists with the endoscopic procedures as a nurse; Li B supervised the diagnosis and treatment of this patient; Bo XT wrote the English version of the paper; all authors have read and approved the final manuscript.

Informed consent statement: Informed written consent was obtained from the patient for the publication of this report and any accompanying images.

Conflict-of-interest statement: The authors declare that they have no conflict of interest to disclose.

CARE Checklist (2016) statement: The authors have read the CARE Checklist (2016), and the manuscript was prepared and revised according to the CARE Checklist (2016).

Open-Access: This article is an open-access article that was selected by an in-house editor and fully peer-reviewed by external reviewers. It is distributed in accordance with the Creative Commons Attribution NonCommercial (CC BY-NC 4.0) license, which permits others to distribute, remix, adapt, build upon this work non-commercially, and license their derivative works on different terms, provided the original work is properly cited and the use is non-commercial. See: <https://creativecommons.org/licenses/by-nc/4.0/>

Country/Territory of origin: China

ORCID number: Xiao-Tong Bo 0000-0003-2050-4516.

S-Editor: Chen YL

L-Editor: Wang TQ

P-Editor: Chen YL

REFERENCES

- Freeman HJ, Piercy JRA, Raine RJ. Collagenous Gastritis. *Cana J of Gastroenterol* 1989; **3**: 171-174 [DOI: 10.1155/1989/528758]
- Zhang H, Jin Z, Lin S, Ding S, Bai P, Cui R, Han Y, Zhang Y, Shang H. Collagenous gastritis: a case report and literature review. *Zhonghua Neike Zazhi* 2010; **49**: 688-690
- Huang H, Wang H, Xiang J, Lv W. A case of collagenous gastritis. *Zhejiang Yixue Zazhi* 2018; **40**: 297-299
- Lagorce-Pages C, Fabiani B, Bouvier R, Scoazec JY, Durand L, Flejou JF. Collagenous gastritis: a report of six cases. *Am J Surg Pathol* 2001; **25**: 1174-1179 [PMID: 11688577 DOI: 10.1097/0000478-200109000-00008]
- Arnason T, Brown IS, Goldsmith JD, Anderson W, O'Brien BH, Wilson C, Winter H, Lauwers GY. Collagenous gastritis: a morphologic and immunohistochemical study of 40 patients. *Mod Pathol* 2015; **28**: 533-544 [PMID: 25234289 DOI: 10.1038/modpathol.2014.119]
- Côté JF, Hankard GF, Faure C, Mougnot JF, Holvoet L, Cézard JP, Navarro J, Peuchmaur M. Collagenous gastritis revealed by severe anemia in a child. *Hum Pathol* 1998; **29**: 883-886 [PMID: 9712433 DOI: 10.1016/s0046-8177(98)90461-0]
- Anwar MS, Aamar A, Marhaba A, Sidhu JS. Collagenous Gastritis in a Young Female With IgA Deficiency. *Gastroenterology Res* 2017; **10**: 126-127 [PMID: 28496534 DOI: 10.14740/gr748w]
- Lim HW, Wong BY, Elkowitz D, Sultan K. An elderly patient's complete response to steroid therapy for collagenous gastritis. *Ther Adv Chronic Dis* 2018; **9**: 143-146 [PMID: 30065811 DOI: 10.1177/2040622318759628]
- Kamimura K, Kobayashi M, Sato Y, Aoyagi Y, Terai S. Collagenous gastritis: Review. *World J Gastrointest Endosc* 2015; **7**: 265-273 [PMID: 25789098 DOI: 10.4253/wjge.v7.i3.265]
- Appelman MH, de Meij TG, Neeffjes-Borst EA, Kneepkens CM. Spontaneous Gastric Perforation in a Case of Collagenous Gastritis. *APSP J Case Rep* 2016; **7**: 7 [PMID: 26816680]
- Liao CH, Saddik M, Ip S. An Unusual Case of Collagenous Gastritis: Incidental Finding in a Patient Presenting with Dysphagia. *Case Rep Gastrointest Med* 2019; **2019**: 5427085 [PMID: 30805226 DOI: 10.1155/2019/5427085]
- Kawasaki K, Kurahara K, Oshiro Y, Ohtsu K, Nakamura S, Fuchigami T, Matsumoto T. Gastrointestinal: Idiopathic granulomatous gastritis observed by magnifying narrow-band imaging endoscopy. *J Gastroenterol Hepatol* 2017; **32**: 947 [PMID: 28449341 DOI: 10.1111/jgh.13616]
- Masaaki K, Yuichi S, Ken'ya K, Rintaro N, Atsuo S, Yutaka A, Yoichi A, Hidenobu W. Collagenous Gastritis, a Counterpart of Collagenous Colitis: Review of Japanese Case Reports. *Stomach and Intestine* 2009; **44**: 2019-2028 [DOI: 10.11477/mf.1403101821]
- Kiryukhin AP, Tertychnyy AS, Shcherbakov PL, Inozemtsev AS, Kolokolnikova OA. Isolated gastric Kaposi's sarcoma in a non-AIDS/HIV patient with coexisting collagenous gastritis and microscopic colitis. *Korean J Intern Med* 2021; **36**: 1530-1531 [PMID: 33535738 DOI: 10.3904/kjim.2020.620]
- Vesoulis Z, Lozanski G, Ravichandran P, Esber E. Collagenous gastritis: a case report, morphologic evaluation, and review. *Mod Pathol* 2000; **13**: 591-596 [PMID: 10824933 DOI: 10.1038/modpathol.3880101]

- 16 **Bajwa RU**, Joshi A, Heikenen JB. Successful Treatment of Collagenous Gastritis in a Child with a Gluten-Free Diet. *WJG* 2015; **114**: 271-273
- 17 **Akkari I**, Skandrani K, Abdelkader AB, Mrabet S, Jazia EB. Anemia revealing a collagenous gastritis in a young Tunisian man. *Pan Afr Med J* 2018; **30**: 231 [PMID: [30574249](#) DOI: [10.11604/pamj.2018.30.231.12981](#)]
- 18 **Winslow JL**, Trainer TD, Colletti RB. Collagenous gastritis: a long-term follow-up with the development of endocrine cell hyperplasia, intestinal metaplasia, and epithelial changes indeterminate for dysplasia. *Am J Clin Pathol* 2001; **116**: 753-758 [PMID: [11710694](#) DOI: [10.1309/3WM2-THU3-3Q2A-DP47](#)]
- 19 **Narsai T**, Su H, Braxton D, Gupta S. Collagenous Gastritis in Primary Selective IgM Deficiency: Transition to EBV+ Gastric Adenocarcinoma. *Case Reports Immunol* 2021; **2021**: 5574944 [PMID: [34123443](#) DOI: [10.1155/2021/5574944](#)]



Published by **Baishideng Publishing Group Inc**
7041 Koll Center Parkway, Suite 160, Pleasanton, CA 94566, USA

Telephone: +1-925-3991568

E-mail: bpgoffice@wjgnet.com

Help Desk: <https://www.f6publishing.com/helpdesk>

<https://www.wjgnet.com>

