

World Journal of *Clinical Cases*

World J Clin Cases 2022 December 6; 10(34): 12462-12803



Contents

Thrice Monthly Volume 10 Number 34 December 6, 2022

FIELD OF VISION

- 12462** Problematics of neurosurgical service during the COVID-19 pandemic in Slovenia
Munda M, Bosnjak R, Velnar T

MINIREVIEWS

- 12470** Circulating angiotensin converting enzyme 2 and COVID-19
Leowattana W, Leowattana T, Leowattana P
- 12484** Evaluation of gut dysbiosis using serum and fecal bile acid profiles
Monma T, Iwamoto J, Ueda H, Tamamushi M, Kakizaki F, Konishi N, Yara S, Miyazaki T, Hirayama T, Ikegami T, Honda A
- 12494** Pediatric kidney transplantation during the COVID-19 pandemic
Tamura H

ORIGINAL ARTICLE

Clinical and Translational Research

- 12500** *Coptis*, *Pinellia*, and *Scutellaria* as a promising new drug combination for treatment of *Helicobacter pylori* infection
Yu Z, Sheng WD, Yin X, Bin Y

Case Control Study

- 12515** Effects of illness perception on negative emotions and fatigue in chronic rheumatic diseases: Rumination as a possible mediator
Lu Y, Jin X, Feng LW, Tang C, Neo M, Ho RC

Retrospective Study

- 12532** Significance of incidental focal fluorine-18 fluorodeoxyglucose uptake in colon/rectum, thyroid, and prostate: With a brief literature review
Lee H, Hwang KH
- 12543** Follow-up study on ThinPrep cytology test-positive patients in tropical regions
Chen YC, Liang CN, Wang XF, Wang MF, Huang XN, Hu JD
- 12551** Effect of teach-back health education combined with structured psychological nursing on adverse emotion and patient cooperation during ^{99m}Tc -3PRGD2.SPECT/CT
Gong WN, Zhang YH, Niu J, Li XB
- 12559** Nosocomial infection and spread of SARS-CoV-2 infection among hospital staff, patients and caregivers
Cheng CC, Fann LY, Chou YC, Liu CC, Hu HY, Chu D

Observational Study

- 12566** Effectiveness and safety of generic and brand direct acting antivirals for treatment of chronic hepatitis C
Abdulla M, Al Ghareeb AM, Husain HAHY, Mohammed N, Al Qamish J
- 12578** Influence of group B *streptococcus* and vaginal cleanliness on the vaginal microbiome of pregnant women
Liao Q, Zhang XF, Mi X, Jin F, Sun HM, Wang QX

Randomized Controlled Trial

- 12587** Clinical study on tri-tongue acupuncture combined with low-frequency electrical stimulation for treating post-stroke dysarthria
Man B, Li WW, Xu JF, Wang Q

META-ANALYSIS

- 12594** Three-dimensional time-of-flight magnetic resonance angiography combined with high resolution T2-weighted imaging in preoperative evaluation of microvascular decompression
Liang C, Yang L, Zhang BB, Guo SW, Li RC

CASE REPORT

- 12605** Acute cytomegalovirus hepatitis in an immunocompetent patient: A case report
Wang JP, Lin BZ, Lin CL, Chen KY, Lin TJ
- 12610** Long-term results of extended Boari flap technique for management of complete ureteral avulsion: A case report
Zhong MZ, Huang WN, Huang GX, Zhang EP, Gan L
- 12617** Amyloid β -related angiitis of the central nervous system occurring after COVID-19 vaccination: A case report
Kizawa M, Iwasaki Y
- 12623** Pseudoileus caused by primary visceral myopathy in a Han Chinese patient with a rare *MYH11* mutation: A case report
Li N, Song YM, Zhang XD, Zhao XS, He XY, Yu LF, Zou DW
- 12631** Emergent use of tube tip in pharynx technique in "cannot intubate cannot oxygenate" situation: A case report
Lin TC, Lai YW, Wu SH
- 12637** Inflammatory myofibroblastic tumor of the central nervous system: A case report
Su ZJ, Guo ZS, Wan HT, Hong XY
- 12648** Atypical aggressive vertebral hemangioma of the sacrum with postoperative recurrence: A case report
Wang GX, Chen YQ, Wang Y, Gao CP
- 12654** Closed reduction of hip dislocation associated with ipsilateral lower extremity fractures: A case report and review of the literature
Xu Y, Lv M, Yu SQ, Liu GP

- 12665** Repair of a large patellar cartilage defect using human umbilical cord blood-derived mesenchymal stem cells: A case report
Song JS, Hong KT, Song KJ, Kim SJ
- 12671** Abdominal bronchogenic cyst: A rare case report
Li C, Zhang XW, Zhao CA, Liu M
- 12678** Malignant fibrous histiocytoma of the axilla with breast cancer: A case report
Gao N, Yang AQ, Xu HR, Li L
- 12684** Rapid hemostasis of the residual inguinal access sites during endovascular procedures: A case report
Kim H, Lee K, Cho S, Joh JH
- 12690** Formation of granulation tissue on bilateral vocal cords after double-lumen endotracheal intubation: A case report
Xiong XJ, Wang L, Li T
- 12696** Giant cellular leiomyoma in the broad ligament of the uterus: A case report
Yan J, Li Y, Long XY, Li DC, Li SJ
- 12703** Pomolidomide for relapsed/refractory light chain amyloidosis after resistance to both bortezomib and daratumumab: A case report
Li X, Pan XH, Fang Q, Liang Y
- 12711** Ureteral- artificial iliac artery fistula: A case report
Feng T, Zhao X, Zhu L, Chen W, Gao YL, Wei JL
- 12717** How to manage isolated tension non-surgical pneumoperitoneum during bronchoscopy? A case report
Baima YJ, Shi DD, Shi XY, Yang L, Zhang YT, Xiao BS, Wang HY, He HY
- 12726** Amiodarone-induced muscle tremor in an elderly patient: A case report
Zhu XY, Tang XH, Yu H
- 12734** Surgical treatment of Pitt-Hopkins syndrome associated with strabismus and early-onset myopia: Two case reports
Huang Y, Di Y, Zhang XX, Li XY, Fang WY, Qiao T
- 12742** Massive low-grade myxoid liposarcoma of the floor of the mouth: A case report and review of literature
Kugimoto T, Yamagata Y, Ohsako T, Hirai H, Nishii N, Kayamori K, Ikeda T, Harada H
- 12750** Gingival enlargement induced by cyclosporine in Medullary aplasia: A case report
Victory Rodríguez G, Ruiz Gutiérrez ADC, Gómez Sandoval JR, Lomeli Martínez SM
- 12761** Compound heterozygous mutations in PMFBP1 cause acephalic spermatozoa syndrome: A case report
Deng TQ, Xie YL, Pu JB, Xuan J, Li XM
- 12768** Colonic tubular duplication combined with congenital megacolon: A case report
Zhang ZM, Kong S, Gao XX, Jia XH, Zheng CN

- 12775** Perforated duodenal ulcer secondary to deferasirox use in a child successfully managed with laparoscopic drainage: A case report
Alshehri A, Alsinan TA
- 12781** Complication after nipple-areolar complex tattooing performed by a non-medical person: A case report
Byeon JY, Kim TH, Choi HJ
- 12787** Interventional urethral balloon dilatation before endoscopic visual internal urethrotomy for post-traumatic bulbous urethral stricture: A case report
Ha JY, Lee MS
- 12793** Regression of gastric endoscopic submucosal dissection induced polypoid nodular scar after *Helicobacter pylori* eradication: A case report
Jin BC, Ahn AR, Kim SH, Seo SY
- 12799** Congenital absence of the right coronary artery: A case report
Zhu XY, Tang XH

ABOUT COVER

Editorial Board Member of *World Journal of Clinical Cases*, Giuseppe Lanza, MD, MSc, PhD, Associate Professor, Department of Surgery and Medical-Surgical Specialties, University of Catania, Catania 95123, Italy.
glanza@oasi.en.it

AIMS AND SCOPE

The primary aim of *World Journal of Clinical Cases* (WJCC, *World J Clin Cases*) is to provide scholars and readers from various fields of clinical medicine with a platform to publish high-quality clinical research articles and communicate their research findings online.

WJCC mainly publishes articles reporting research results and findings obtained in the field of clinical medicine and covering a wide range of topics, including case control studies, retrospective cohort studies, retrospective studies, clinical trials studies, observational studies, prospective studies, randomized controlled trials, randomized clinical trials, systematic reviews, meta-analysis, and case reports.

INDEXING/ABSTRACTING

The WJCC is now abstracted and indexed in Science Citation Index Expanded (SCIE, also known as SciSearch®), Journal Citation Reports/Science Edition, Current Contents®/Clinical Medicine, PubMed, PubMed Central, Scopus, Reference Citation Analysis, China National Knowledge Infrastructure, China Science and Technology Journal Database, and Superstar Journals Database. The 2022 Edition of Journal Citation Reports® cites the 2021 impact factor (IF) for WJCC as 1.534; IF without journal self cites: 1.491; 5-year IF: 1.599; Journal Citation Indicator: 0.28; Ranking: 135 among 172 journals in medicine, general and internal; and Quartile category: Q4. The WJCC's CiteScore for 2021 is 1.2 and Scopus CiteScore rank 2021: General Medicine is 443/826.

RESPONSIBLE EDITORS FOR THIS ISSUE

Production Editor: Si Zhao; Production Department Director: Xu Guo; Editorial Office Director: Jin-Lei Wang.

NAME OF JOURNAL

World Journal of Clinical Cases

ISSN

ISSN 2307-8960 (online)

LAUNCH DATE

April 16, 2013

FREQUENCY

Thrice Monthly

EDITORS-IN-CHIEF

Bao-Gan Peng, Jerzy Tadeusz Chudek, George Kontogeorgos, Maurizio Serati, Ja Hyeon Ku

EDITORIAL BOARD MEMBERS

<https://www.wjnet.com/2307-8960/editorialboard.htm>

PUBLICATION DATE

December 6, 2022

COPYRIGHT

© 2022 Baishideng Publishing Group Inc

INSTRUCTIONS TO AUTHORS

<https://www.wjnet.com/bpg/gerinfo/204>

GUIDELINES FOR ETHICS DOCUMENTS

<https://www.wjnet.com/bpg/GerInfo/287>

GUIDELINES FOR NON-NATIVE SPEAKERS OF ENGLISH

<https://www.wjnet.com/bpg/gerinfo/240>

PUBLICATION ETHICS

<https://www.wjnet.com/bpg/GerInfo/288>

PUBLICATION MISCONDUCT

<https://www.wjnet.com/bpg/gerinfo/208>

ARTICLE PROCESSING CHARGE

<https://www.wjnet.com/bpg/gerinfo/242>

STEPS FOR SUBMITTING MANUSCRIPTS

<https://www.wjnet.com/bpg/GerInfo/239>

ONLINE SUBMISSION

<https://www.f6publishing.com>



Colonic tubular duplication combined with congenital megacolon: A case report

Zhe-Ming Zhang, Shuai Kong, Xin-Xin Gao, Xiang-Hao Jia, Chun-Ning Zheng

Specialty type: Gastroenterology and hepatology

Provenance and peer review: Unsolicited article; Externally peer reviewed.

Peer-review model: Single blind

Peer-review report's scientific quality classification

Grade A (Excellent): 0
Grade B (Very good): B
Grade C (Good): C
Grade D (Fair): 0
Grade E (Poor): 0

P-Reviewer: Haddadi S, Algeria; Pietroletti R, Italy

Received: September 20, 2022

Peer-review started: September 20, 2022

First decision: October 13, 2022

Revised: October 21, 2022

Accepted: November 11, 2022

Article in press: November 11, 2022

Published online: December 6, 2022



Zhe-Ming Zhang, Xiang-Hao Jia, School of Clinical Medicine, Weifang Medical University, Weifang 261053, Shandong Province, China

Shuai Kong, Xin-Xin Gao, Chun-Ning Zheng, Department of Gastrointestinal Surgery, Provincial Hospital Affiliated to Shandong First Medical University, Jinan 250000, Shandong Province, China

Corresponding author: Chun-Ning Zheng, MD, PhD, Professor, Department of Gastrointestinal Surgery, Provincial Hospital Affiliated to Shandong First Medical University, No. 324 Jingwuwei Road, Huaiyin District, Jinan 250000, Shandong Province, China.
yinxz123@163.com

Abstract

BACKGROUND

Colonic duplication refers to a spherical or tubular cavity which shows similar properties with the native colon and is attached to the mesenteric side of the alimentary tract. It is the rarest in alimentary tract duplications. Based upon anatomic feature, colonic duplications can be classified as spherical (cystic) or tubular, with the latter being less common (approximately 20%). Symptoms of colonic duplication are dependent on the duplication site and extent, and patient age, etc. Usually, patients with colonic duplication manifest typical intestinal obstruction, potentially accompanied by recurrent dark or bright red bloody stool, varying degrees of anemia-related symptoms, and body wasting.

CASE SUMMARY

A young male patient was admitted to our hospital due to recurrent abdominal pain. No definite diagnosis was achieved by computed tomography (CT) or electronic colonoscopy, and the bowel preparation efficacy was suboptimal. Hirschsprung disease was suspected, and thus laparoscopic exploration was performed. An approximately 60-cm-long inverted duplicated colon with severe edema and dilation was identified. It originated from the mesenteric side of the transverse colon and ended in the terminal part of the descending colon with a blind end. The parallel native colon had a thickened colonic wall, became stiff, and was poor in peristalsis. The patient then underwent subtotal colectomy and was discharged 7 d after the surgery. From 3 mo post-surgery to date, the patient had regular bowel movement once daily and a steady increase in body weight.

CONCLUSION

Tubular colonic duplication is a rare type of alimentary tract duplication that can

be detected by ultrasonography, CT, or magnetic resonance imaging based on the actual clinical situation. Surgical resection of aberrant colon (including the duplicated colonic segment and other potentially involved colonic segments) is the only approach to cure this medical condition.

Key Words: Colonic duplication; Chronic constipation; Subtotal colectomy; Congenital megacolon; Case report

©The Author(s) 2022. Published by Baishideng Publishing Group Inc. All rights reserved.

Core Tip: The incidence of tubular duplication malformations of the colon is very low. Patients usually present with intestinal obstruction. Accurate imaging is not yet fixed, and the diagnosis is usually clear only during surgery, which is the only effective treatment.

Citation: Zhang ZM, Kong S, Gao XX, Jia XH, Zheng CN. Colonic tubular duplication combined with congenital megacolon: A case report. *World J Clin Cases* 2022; 10(34): 12768-12774

URL: <https://www.wjgnet.com/2307-8960/full/v10/i34/12768.htm>

DOI: <https://dx.doi.org/10.12998/wjcc.v10.i34.12768>

INTRODUCTION

There have been some studies reporting alimentary tract duplications. According to previous reports, alimentary tract duplications majorly happen in the small intestine, while most of the cases correspond anatomically to the cystic lesions independent of the normal alimentary tract. This study reports a case of tubular colonic duplication, which is extremely rare in alimentary tract duplications.

CASE PRESENTATION

Chief complaints

An 18-year-old male patient visited our hospital with recurrent intestinal obstruction and 2-wk exacerbation as the chief complaint.

History of present illness

The patient previously underwent conservative treatment for recurrent intestinal obstruction in a local hospital and was discharged after symptoms resolved. However, he responded poorly to the recent several conservative treatments.

History of past illness

The patient previously had no other disease, food or drug allergy, surgery, or trauma.

Personal and family history

There was no relevant family history or other inherited disorders.

Physical examination

Physical examination revealed distended abdomen, tenderness in the left upper abdomen, no rebound tenderness or muscle tension, flatness to percussion, no shifting dullness, and weak bowel sound.

Laboratory examinations

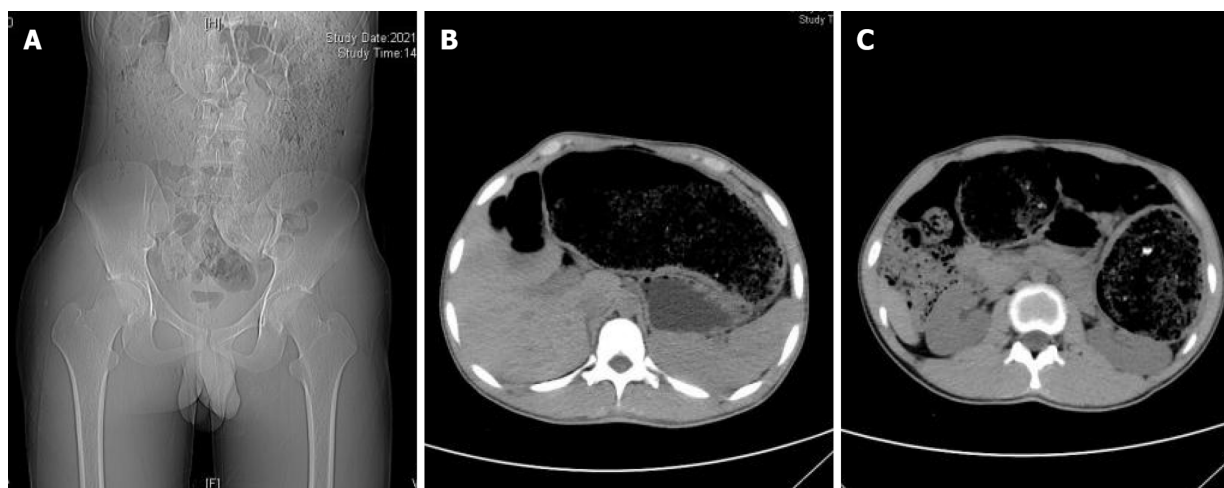
All laboratory tests were in the normal range.

Imaging examinations

On abdominal plain computed tomography (CT), distinct distention of the colonic lumen was identified. It was significant in the transverse and descending colons, compressing the adjacent structures. Megacolon was suggested (Figure 1).

Further diagnostic work-up

Colonoscopy was applied with an insertion depth of 70 cm reaching the ileocecum. A large amount of residual fecal material was observed in the lumen with a smooth mucosal surface, and the visible



DOI: 10.12998/wjcc.v10.i34.12768 Copyright ©The Author(s) 2022.

Figure 1 Abdominal computed tomography showed significant dilatation of the colonic lumen, dominated by dilatation of the transverse and descending colons, with more contents and adjacent tissue structures under colonic compression. A: Coronal view; B and C: Axial view.

distention predominantly happened in the ascending colon, hepatic flexure, and transverse colon. No structural abnormalities were found. Laparoscopic exploration was then conducted (Figure 2).

Intraoperative observations

Tubular colonic duplication was confirmed intraoperatively. A dilated bowel segment originating from the transverse colon at the flexure was identified. The surgery was converted to open surgery. A bowel segment arising from the transverse colon at the flexure and ended in the terminal part of the descending colon with a blind end was observed. It was parallel to the normal mesenteric side of the transverse colon, and shared blood supply with the native colon. The duplicated bowel segment was about 60 cm in length and in a "Y" shape. It was hard to separate the native and duplicated bowel segment due to their intimate anatomical relationship. Besides, the two parts shared a common set of blood-supplying vessels, although only the branches issuing from the arch vessels from the most distal part of the native colon supplied blood to the duplicated bowel segment. Moreover, the native colon presented with a thickened colonic wall, stiffness, and poor peristalsis, which might be associated with the chronic inflammation because of colonic duplication. Considering the characteristics of colonic duplication, the direction of peristalsis in the colon, and the patient's chief complaint, we suspected that the peristalsis in the native colon was also affected (loss of ganglion cells indicated by postoperative pathology). In this context, there might be a high risk of developing complications after resection of the duplicated bowel segment. Therefore, subtotal colectomy was decided. After discussion with the patient family about the situation, subtotal colectomy was performed to fulfill sigmoidal colon and terminal ileum anastomosis (Figures 3 and 4).

Postoperative pathological findings

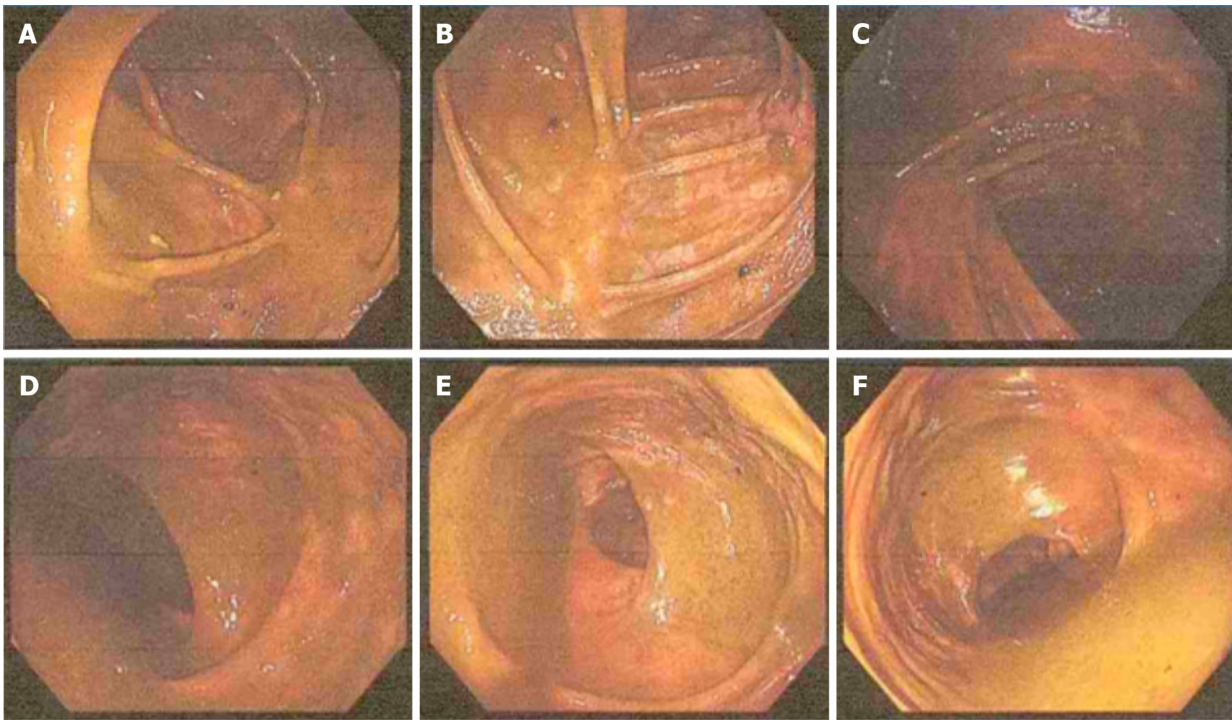
Postoperative pathology demonstrated: (1) Chronic mucositis (colonic) accompanied by pigmentophagy proliferation, consistent with melanosis coli; (2) absence of ganglion cells in the tangent of dilated or stenosed segment; and (3) acute and chronic appendicitis (Figure 5).

FINAL DIAGNOSIS

A final diagnosis of tubular colonic duplication complicated by congenital megacolon was made.

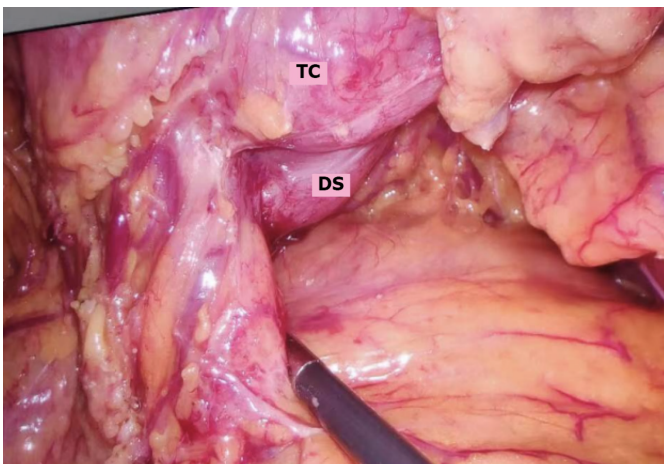
TREATMENT

Subtotal colon resection was performed.



DOI: 10.12998/wjcc.v10.i34.12768 Copyright ©The Author(s) 2022.

Figure 2 Colonoscopy images show a large amount of fecal residue in the intestinal lumen, which was dilated (dominated by the dilation of the ascending colon, hepatic region, and transverse colon), and a smooth mucosa. No obvious structural abnormalities were found. A: Ileocecum; B: Ascending colon proximal to the liver; C: Transverse colon proximal to the liver; D: Descending colon; E: Sigmoid colon; F: Rectum.

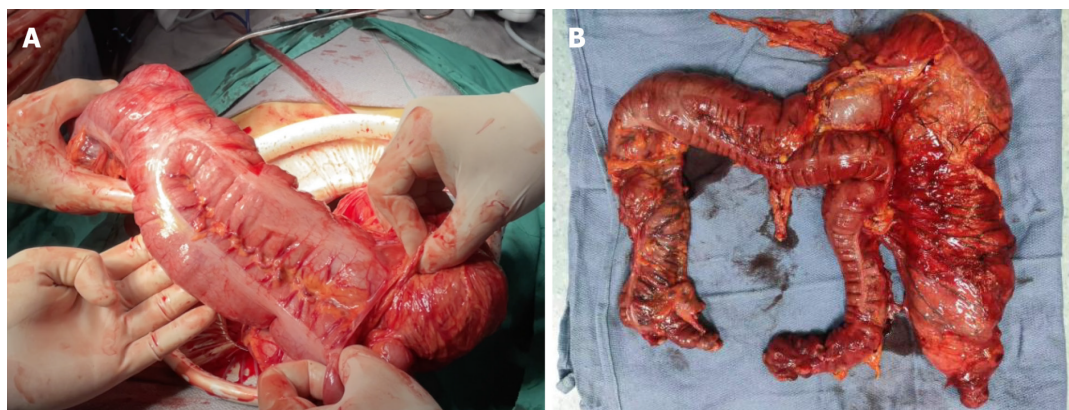


DOI: 10.12998/wjcc.v10.i34.12768 Copyright ©The Author(s) 2022.

Figure 3 Laparoscopic examination revealed that the malformed colon and the native colon received joint nourishment from the middle colic artery. TC: Transverse colon; DS: Duplication segment.

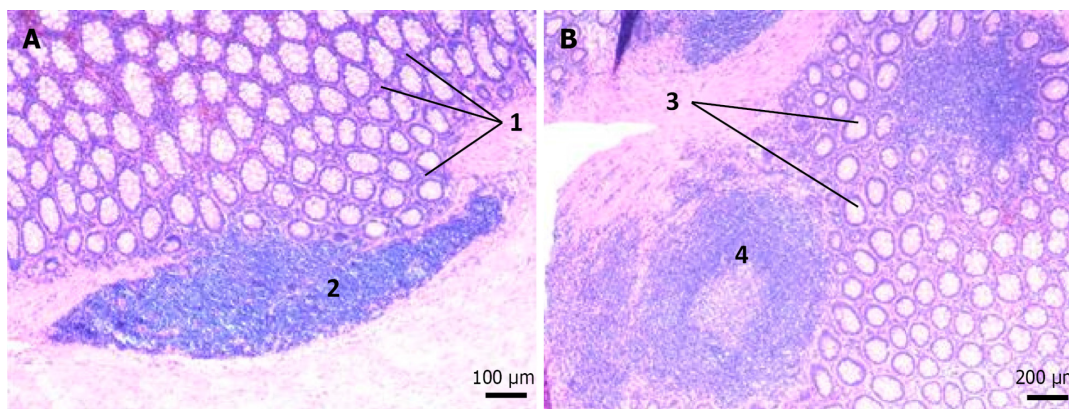
OUTCOME AND FOLLOW-UP

During postoperative hospitalization (7 d), no signs of discomfort, surgery-related complications, or other adverse events were observed. Flatus was fulfilled on postoperative day 4, and the patient was fed a liquid diet on the same day. Symptoms such as abdominal distension and pain were monitored. One month after surgery, the patient had bowel movement four times daily, presenting with shapeless yellow loose stools. By the second month after surgery, the bowel movement frequency was reduced to twice daily, and the stools presented as shaped, yellow, and soft. From the third month after surgery to date, the patient had normal bowel movement once daily with the stools presenting as yellow and soft. Satisfactory results were found at the recent follow-up, including body gain from preoperative 60 kg to 70 kg and BMI increase from 17.54 kg/m² to 20.47 kg/m². Overall, the patient was doing well during the 10-mo follow-up.



DOI: 10.12998/wjcc.v10.i34.12768 Copyright ©The Author(s) 2022.

Figure 4 Duplicated colonic segment and native colon. A: Intraoperative view: An intimate anatomical relationship between the duplicated colonic segment and native colon; B: Resected colon.



DOI: 10.12998/wjcc.v10.i34.12768 Copyright ©The Author(s) 2022.

Figure 5 Histopathological analysis of the resected specimen. Haematoxylin and eosin staining. A: “1” represents pigmentophagy proliferation and “2” represents lymphocytes (blue); B: “3” represents colonic gland and “4” represents lymphoid follicle.

DISCUSSION

Tubular colonic duplication is the rarest malformation of the alimentary tract[1]. The etiology remains elusive, and potential causes include genetic factors, smoking, antidepressants, *etc*[2-5]. There is a notion that the endothelium of the nourishing vessels in the end of the intestinal diverticulum, which has been present during fetal life, gets damaged due to maternal intrauterine ischemia, resulting in unexpected vascular alteration. This alteration can gradually separate the diverticulum from the intestinal wall and then transform it into blind end tubular bowel segment[6]. Usually, the duplicated tubular colon shares blood vessels with the native colon and also has full-developed wall structures[7,8]. Tubular duplications commonly present with a proximal blind end and communicate with the native colon with the distal opening. In patients with such characteristic, enteroscopy is highly efficient to find the disorder after the appearance of clinical symptoms or abdominal discomfort. In contrast, the case reported here presented with a distal blind end and a connection to the native colon with the proximal end. This explained why there was no abnormality on enteroscopy. The anterograde (peristaltic) direction of the proximal opening makes it difficult to observe the intestinal abnormalities on enteroscopy, by which inverted observation is not available.

The diagnosis of tubular colonic duplication is difficult, and the majority of patients are admitted for acute abdomen[9]. Ultrasonography (USG), computed tomography (CT), and magnetic resonance imaging (MRI) are commonly used diagnostic tools with their own advantages and disadvantages. USG is non-radioactive and easy to operate, but it generates poor-quality images and has a limited capability to define the boundaries between the duplication and surrounding healthy tissues. Relatively, CT and MRI images are clearer. While for patients unable to take care of themselves, such as infants, analgesia and sedation are required sometimes before MRI. Besides, MRI also has some limitations, such as heavy noise, long duration, and high cost, which should also be considered for diagnosis. Okur *et al* [10] recommended CT for diagnosis, but it failed to make a definite diagnosis in the patient reported here.

The patient here was initially diagnosed with Hirschsprung disease preoperatively and then underwent laparoscopic exploration to obtain a definite diagnosis as tubular colonic duplication.

Inoue *et al*[11] previously reported two cases of colonic duplication complicated by colonic malignancy, and the malignancy was considered as a result of chronic inflammatory stimulation to the colonic mucosa. In the current report, the pathology of the patient suggested melanosis coli, which has no obvious symptoms and is complicated by adenoma and polyps in most cases. Existing research proved that melanosis coli was significantly associated with hyperplastic polyps and adenoma[12,13]. In spite of the unclear relationship between melanosis coli and colonic malignancy, the tumor-related mRNA and proteins involved in the Hedgehog signaling pathway also exhibit an upward trend in cases of melanosis coli[14,15]. Moreover, colonic adenoma is considered as a premalignancy of colonic tumor. Therefore, vigilance is required in the presence of melanosis coli.

CONCLUSION

The patient reported here was admitted for recurrent intestinal obstruction and diagnosed with tubular colonic duplication, which is the rarest among alimentary tract duplications. Preoperative examinations failed to make a valuable diagnosis. Postoperative pathology suggested a diagnosis of melanosis coli, which shows a possible relationship with colonic malignancy and has potential pathological changes that may lead to carcinogenesis. Surgical resection is the only treatment to cure colonic duplication, while the procedure is dependent on the specific anatomic features of the lesion. In this patient, single surgical resection of the duplicated colonic segment had a high risk of developing complications, due to the intimate anatomical relationship with and the alterations in the native colon (including thickening and stiffness of the colonic wall, and poor peristalsis). Therefore, subtotal colectomy was selected[16].

FOOTNOTES

Author contributions: Zhang ZM drafted, reviewed, and revised the manuscript; Zheng CN was the primary physician during the patient's hospital stay; Kong S, Gao XX, and Jia XH provided the images; all authors have read and approved the final manuscript.

Informed consent statement: Informed written consent was obtained from the patient for publication of this report and any accompanying images.

Conflict-of-interest statement: The authors declare that they have no conflict of interest to report.

CARE Checklist (2016) statement: The authors have read the CARE Checklist (2016), and the manuscript was prepared and revised according to the CARE Checklist (2016).

Open-Access: This article is an open-access article that was selected by an in-house editor and fully peer-reviewed by external reviewers. It is distributed in accordance with the Creative Commons Attribution NonCommercial (CC BY-NC 4.0) license, which permits others to distribute, remix, adapt, build upon this work non-commercially, and license their derivative works on different terms, provided the original work is properly cited and the use is non-commercial. See: <https://creativecommons.org/licenses/by-nc/4.0/>

Country/Territory of origin: China

ORCID number: Zhe-Ming Zhang 0000-0001-6902-560X; Shuai Kong 0000-0003-3751-6679; Xin-Xin Gao 0000-0001-6181-3193; Xiang-Hao Jia 0000-0003-3274-3645; Chun-Ning Zheng 0000-0002-5961-2365.

S-Editor: Chen YL

L-Editor: Wang TQ

P-Editor: Chen YL

REFERENCES

- 1 **Parker BC**, Guthrie J, France NE, Atwell JD. Gastric duplications in infancy. *J Pediatr Surg* 1972; **7**: 294-298 [PMID: 4261017 DOI: 10.1016/0022-3468(72)90128-5]
- 2 **Ambrose JA**, Barua RS. The pathophysiology of cigarette smoking and cardiovascular disease: an update. *J Am Coll Cardiol* 2004; **43**: 1731-1737 [PMID: 15145091 DOI: 10.1016/j.jacc.2003.12.047]
- 3 **Perry MF**, Mulcahy H, DeFranco EA. Influence of periconception smoking behavior on birth defect risk. *Am J Obstet Gynecol* 2019; **220**: 588.e1-588.e7 [PMID: 30790570 DOI: 10.1016/j.ajog.2019.02.029]
- 4 **Khanna K**, Sharma S, Pabalan N, Singh N, Gupta DK. A review of genetic factors contributing to the etiopathogenesis of

- anorectal malformations. *Pediatr Surg Int* 2018; **34**: 9-20 [PMID: [29094201](#) DOI: [10.1007/s00383-017-4204-2](#)]
- 5 **Malm H.** Prenatal exposure to selective serotonin reuptake inhibitors and infant outcome. *Ther Drug Monit* 2012; **34**: 607-614 [PMID: [23042258](#) DOI: [10.1097/FTD.0b013e31826d07ea](#)]
- 6 **Ildstad ST,** Tollerud DJ, Weiss RG, Ryan DP, McGowan MA, Martin LW. Duplications of the alimentary tract. Clinical characteristics, preferred treatment, and associated malformations. *Ann Surg* 1988; **208**: 184-189 [PMID: [3401062](#) DOI: [10.1097/0000658-198808000-00009](#)]
- 7 **Grande Moreillo C,** Margarit Mallol J, Fuentes Carretero S. Intestinal duplication isolated from the digestive tract: an entity to be considered. *Cir Pediatr* 2022; **35**: 36-41 [PMID: [35037439](#) DOI: [10.54847/cp.2022.01.17](#)]
- 8 **Erginel B,** Soysal FG, Ozbey H, Keskin E, Celik A, Karadag A, Salman T. Enteric Duplication Cysts in Children: A Single-Institution Series with Forty Patients in Twenty-Six Years. *World J Surg* 2017; **41**: 620-624 [PMID: [27734079](#) DOI: [10.1007/s00268-016-3742-4](#)]
- 9 **Hugele F,** Dumont C, Boulot P, Couture A, Prodhomme O. Does prenatal MRI enhance fetal diagnosis of intra-abdominal cysts? *Prenat Diagn* 2015; **35**: 669-674 [PMID: [25754771](#) DOI: [10.1002/pd.4590](#)]
- 10 **Okur MH,** Arslan MS, Arslan S, Aydogdu B, Türkçü G, Goya C, Uygun I, Cigdem MK, Önen A, Otcu S. Gastrointestinal tract duplications in children. *Eur Rev Med Pharmacol Sci* 2014; **18**: 1507-1512 [PMID: [24899610](#)]
- 11 **Inoue Y,** Nakamura H. Adenocarcinoma arising in colonic duplication cysts with calcification: CT findings of two cases. *Abdom Imaging* 1998; **23**: 135-137 [PMID: [9516499](#) DOI: [10.1007/s002619900305](#)]
- 12 **Zhang Y,** Zhan TT, Dong ZY, Sun HH, Wang JW, Chen Y, Xu SC. Melanosis coli: A factor not associated with histological progression of colorectal polyps. *J Dig Dis* 2022; **23**: 302-309 [PMID: [35661415](#) DOI: [10.1111/1751-2980.13100](#)]
- 13 **Kassim SA,** Abbas M, Tang W, Wu S, Meng Q, Zhang C, Naeem S, Li X, Chen R. Retrospective study on melanosis coli as risk factor of colorectal neoplasm: a 3-year colonoscopic finding in Zhuhai Hospital, China. *Int J Colorectal Dis* 2020; **35**: 213-222 [PMID: [31823053](#) DOI: [10.1007/s00384-019-03435-7](#)]
- 14 **Wang ZC,** Gao J, Zi SM, Yang M, Du P, Cui L. Aberrant expression of sonic hedgehog pathway in colon cancer and melanosis coli. *J Dig Dis* 2013; **14**: 417-424 [PMID: [23551431](#) DOI: [10.1111/1751-2980.12060](#)]
- 15 **Oniscu A,** James RM, Morris RG, Bader S, Malcomson RD, Harrison DJ. Expression of Sonic hedgehog pathway genes is altered in colonic neoplasia. *J Pathol* 2004; **203**: 909-917 [PMID: [15258993](#) DOI: [10.1002/path.1591](#)]
- 16 **Merrot T,** Anastasescu R, Pankevych T, Tercier S, Garcia S, Alessandrini P, Guys JM. Duodenal duplications. Clinical characteristics, embryological hypotheses, histological findings, treatment. *Eur J Pediatr Surg* 2006; **16**: 18-23 [PMID: [16544221](#) DOI: [10.1055/s-2006-923798](#)]



Published by **Baishideng Publishing Group Inc**
7041 Koll Center Parkway, Suite 160, Pleasanton, CA 94566, USA

Telephone: +1-925-3991568

E-mail: bpgoffice@wjgnet.com

Help Desk: <https://www.f6publishing.com/helpdesk>

<https://www.wjgnet.com>

