

# World Journal of *Gastrointestinal Surgery*

*World J Gastrointest Surg* 2023 February 27; 15(2): 121-306



## Contents

Monthly Volume 15 Number 2 February 27, 2023

## EDITORIAL

- 121 Hot topics in pancreatic cancer management  
*Caputo D*

## REVIEW

- 127 Minimum platelet count threshold before invasive procedures in cirrhosis: Evolution of the guidelines  
*Biolato M, Vitale F, Galasso T, Gasbarrini A, Grieco A*
- 142 Comprehensive multimodal management of borderline resectable pancreatic cancer: Current status and progress  
*Wu HY, Li JW, Li JZ, Zhai QL, Ye JY, Zheng SY, Fang K*

## MINIREVIEWS

- 163 Impact of endoscopic ultrasound-guided radiofrequency ablation in managing pancreatic malignancy  
*Lesmana CRA*
- 169 Current management of concomitant cholelithiasis and common bile duct stones  
*Pavlidis ET, Pavlidis TE*
- 177 Surveillance strategies following curative resection and non-operative approach of rectal cancer: How and how long? Review of current recommendations  
*Lauretta A, Montori G, Guerrini GP*

## ORIGINAL ARTICLE

## Retrospective Study

- 193 Causes of epigastric pain and vomiting after laparoscopic-assisted radical right hemicolectomy - superior mesenteric artery syndrome  
*Xie J, Bai J, Zheng T, Shu J, Liu ML*
- 201 Analysis of the impact of ERAS-based respiratory function training on older patients' ability to prevent pulmonary complications after abdominal surgery  
*Gu YX, Wang XY, Xu MX, Qian JJ, Wang Y*
- 211 Prognostic value of preoperative immune-nutritional scoring systems in remnant gastric cancer patients undergoing surgery  
*Zhang Y, Wang LJ, Li QY, Yuan Z, Zhang DC, Xu H, Yang L, Gu XH, Xu ZK*
- 222 Efficacy and safety of preoperative immunotherapy in patients with mismatch repair-deficient or microsatellite instability-high gastrointestinal malignancies  
*Li YJ, Liu XZ, Yao YF, Chen N, Li ZW, Zhang XY, Lin XF, Wu AW*

### Observational Study

- 234 Hepatobiliary manifestations following two-stages elective laparoscopic restorative proctocolectomy for patients with ulcerative colitis: A prospective observational study  
*Habeeb TAAM, Hussain A, Podda M, Cianci P, Ramshaw B, Safwat K, Amr WM, Wasefy T, Fiad AA, Mansour MI, Moursi AM, Osman G, Qasem A, Fawzy M, Alsaad MIA, Kalmoush AE, Nassar MS, Mustafa FM, Badawy MHM, Hamdy A, Elbelkasi H, Mousa B, Metwalli AEM, Mawla WA, Elaidy MM, Baghdadi MA, Raafat A*

### SYSTEMATIC REVIEWS

- 249 Hypophosphatemia as a prognostic tool for post-hepatectomy liver failure: A systematic review  
*Riauka R, Ignatavicius P, Barauskas G*

### META-ANALYSIS

- 258 Network meta-analysis of the prognosis of curative treatment strategies for recurrent hepatocellular carcinoma after hepatectomy  
*Chen JL, Chen YS, Ker CG*
- 273 Does size matter for resection of giant versus non-giant hepatocellular carcinoma? A meta-analysis  
*Lee AJ, Wu AG, Yew KC, Shelat VG*

### CASE REPORT

- 287 Primary malignant melanoma of the esophagus combined with squamous cell carcinoma: A case report  
*Zhu ML, Wang LY, Bai XQ, Wu C, Liu XY*
- 294 Mesh erosion into the colon following repair of parastomal hernia: A case report  
*Zhang Y, Lin H, Liu JM, Wang X, Cui YF, Lu ZY*

### LETTER TO THE EDITOR

- 303 Fecal microbiota transplantation as potential first-line treatment for patients with *Clostridioides difficile* infection and prior appendectomy  
*Zhao JW, Chang B, Sang LX*

**ABOUT COVER**

Editorial Board Member of *World Journal of Gastrointestinal Surgery*, Dirk Uhlmann, FACS, MD, PhD, Chief Doctor, Professor, Department of Visceral, Thoracic and Vascular Surgery, Klinikum Döbeln, Döbeln 04720, Germany. [dirk.uhlmann@klinikum-doebeln.de](mailto:dirk.uhlmann@klinikum-doebeln.de)

**AIMS AND SCOPE**

The primary aim of *World Journal of Gastrointestinal Surgery* (WJGS, *World J Gastrointest Surg*) is to provide scholars and readers from various fields of gastrointestinal surgery with a platform to publish high-quality basic and clinical research articles and communicate their research findings online.

WJGS mainly publishes articles reporting research results and findings obtained in the field of gastrointestinal surgery and covering a wide range of topics including biliary tract surgical procedures, biliopancreatic diversion, colectomy, esophagectomy, esophagostomy, pancreas transplantation, and pancreatectomy, etc.

**INDEXING/ABSTRACTING**

The WJGS is now abstracted and indexed in Science Citation Index Expanded (SCIE, also known as SciSearch®), Current Contents/Clinical Medicine, Journal Citation Reports/Science Edition, PubMed, PubMed Central, Reference Citation Analysis, China National Knowledge Infrastructure, China Science and Technology Journal Database, and Superstar Journals Database. The 2022 Edition of Journal Citation Reports® cites the 2021 impact factor (IF) for WJGS as 2.505; IF without journal self cites: 2.473; 5-year IF: 3.099; Journal Citation Indicator: 0.49; Ranking: 104 among 211 journals in surgery; Quartile category: Q2; Ranking: 81 among 93 journals in gastroenterology and hepatology; and Quartile category: Q4.

**RESPONSIBLE EDITORS FOR THIS ISSUE**

Production Editor: Rui-Rui Wu; Production Department Director: Xiang Li; Editorial Office Director: Jia-Ru Fan.

**NAME OF JOURNAL**

*World Journal of Gastrointestinal Surgery*

**ISSN**

ISSN 1948-9366 (online)

**LAUNCH DATE**

November 30, 2009

**FREQUENCY**

Monthly

**EDITORS-IN-CHIEF**

Peter Schemmer

**EDITORIAL BOARD MEMBERS**

<https://www.wjgnet.com/1948-9366/editorialboard.htm>

**PUBLICATION DATE**

February 27, 2023

**COPYRIGHT**

© 2023 Baishideng Publishing Group Inc

**INSTRUCTIONS TO AUTHORS**

<https://www.wjgnet.com/bpg/gerinfo/204>

**GUIDELINES FOR ETHICS DOCUMENTS**

<https://www.wjgnet.com/bpg/GerInfo/287>

**GUIDELINES FOR NON-NATIVE SPEAKERS OF ENGLISH**

<https://www.wjgnet.com/bpg/gerinfo/240>

**PUBLICATION ETHICS**

<https://www.wjgnet.com/bpg/GerInfo/288>

**PUBLICATION MISCONDUCT**

<https://www.wjgnet.com/bpg/gerinfo/208>

**ARTICLE PROCESSING CHARGE**

<https://www.wjgnet.com/bpg/gerinfo/242>

**STEPS FOR SUBMITTING MANUSCRIPTS**

<https://www.wjgnet.com/bpg/GerInfo/239>

**ONLINE SUBMISSION**

<https://www.f6publishing.com>



## Does size matter for resection of giant versus non-giant hepatocellular carcinoma? A meta-analysis

Aaron JL Lee, Andrew GR Wu, Kuo Chao Yew, Vishal G Shelat

**Specialty type:** Gastroenterology and hepatology

**Provenance and peer review:** Invited article; Externally peer reviewed.

**Peer-review model:** Single blind

**Peer-review report's scientific quality classification**

Grade A (Excellent): 0  
Grade B (Very good): B  
Grade C (Good): C, C  
Grade D (Fair): 0  
Grade E (Poor): 0

**P-Reviewer:** Li JX, China; Yu YB, China

**Received:** October 11, 2022

**Peer-review started:** October 11, 2022

**First decision:** November 6, 2022

**Revised:** November 19, 2022

**Accepted:** February 1, 2023

**Article in press:** February 1, 2023

**Published online:** February 27, 2023



**Aaron JL Lee**, Lee Kong Chian School of Medicine, Nanyang Technological University, Singapore 308232, Singapore

**Andrew GR Wu**, Yong Loo Lin School of Medicine, National University of Singapore, Singapore 117597, Singapore

**Kuo Chao Yew**, Department of Gastroenterology and Hepatology, Tan Tock Seng Hospital, Singapore 308433, Singapore

**Vishal G Shelat**, Department of Hepato-Pancreatico-Biliary Surgery, Tan Tok Seng Hospital, Singapore 308433, Singapore

**Corresponding author:** Aaron JL Lee, MBBS, Doctor, Lee Kong Chian School of Medicine, Nanyang Technological University, No. 11 Mandalay Rd, Singapore 308232, Singapore. [alee047@e.ntu.edu.sg](mailto:alee047@e.ntu.edu.sg)

### Abstract

#### BACKGROUND

Research on long-term survival after resection of giant ( $\geq 10$  cm) and non-giant hepatocellular carcinoma (HCC) ( $< 10$  cm) has produced conflicting results.

#### AIM

This study aimed to investigate whether oncological outcomes and safety profiles of resection differ between giant and non-giant HCC.

#### METHODS

PubMed, MEDLINE, EMBASE, and Cochrane databases were searched. Studies designed to investigate the outcomes of giant *vs* non-giant HCC were included. The primary endpoints were overall survival (OS) and disease-free survival (DFS). The secondary endpoints were postoperative complications and mortality rates. All studies were assessed for bias using the Newcastle–Ottawa Scale.

#### RESULTS

24 retrospective cohort studies involving 23747 patients (giant = 3326; non-giant = 20421) who underwent HCC resection were included. OS was reported in 24 studies, DFS in 17 studies, 30-d mortality rate in 18 studies, postoperative complications in 15 studies, and post-hepatectomy liver failure (PHLF) in six studies. The HR was significantly lower for non-giant HCC in both OS (HR 0.53, 95%CI: 0.50-0.55,  $P < 0.001$ ) and DFS (HR 0.62, 95%CI: 0.58-0.84,  $P < 0.001$ ). No



significant difference was found for 30-d mortality rate (OR 0.73, 95%CI: 0.50-1.08,  $P = 0.116$ ), postoperative complications (OR 0.81, 95%CI: 0.62-1.06,  $P = 0.140$ ), and PHLF (OR 0.81, 95%CI: 0.62-1.06,  $P = 0.140$ ).

## CONCLUSION

Resection of giant HCC is associated with poorer long-term outcomes. The safety profile of resection was similar in both groups; however, this may have been confounded by reporting bias. HCC staging systems should account for the size differences.

**Key Words:** Hepatectomy; Giant hepatocellular carcinoma; Resection; Meta-analysis

©The Author(s) 2023. Published by Baishideng Publishing Group Inc. All rights reserved.

**Core Tip:** Resection of giant hepatocellular carcinoma (HCC) is associated with poorer long-term outcomes, with a safety profile similar to that of resection of non-giant HCC. The importance of this is that HCC staging systems should account for the size differences.

**Citation:** Lee AJ, Wu AG, Yew KC, Shelat VG. Does size matter for resection of giant versus non-giant hepatocellular carcinoma? A meta-analysis. *World J Gastrointest Surg* 2023; 15(2): 273-286

**URL:** <https://www.wjgnet.com/1948-9366/full/v15/i2/273.htm>

**DOI:** <https://dx.doi.org/10.4240/wjgs.v15.i2.273>

## INTRODUCTION

Hepatocellular carcinoma (HCC) is the most prevalent type of primary liver cancer[1]. It is the third most common cause of cancer-related deaths worldwide and has the fifth-highest incidence rate of cancers[2]. Currently, most HCCs develop secondary to underlying liver disease, often due to chronic hepatitis B or C virus infection[3]. Most developed countries have surveillance programs that identify HCC early, resulting in potentially curative treatment for 40%–50% of patients[4,5]. For patients who do not qualify for curative treatment, locoregional or systemic treatments can be used, depending on the stage of the disease[4]. Despite early detection and advances in management, HCC has a 5-year survival rate of 18%[6].

In cancer management, prognostic factors are used in staging systems to help recommend appropriate treatment strategies and counsel patients on recurrence risk and survival estimates[7]. Key predictors of prognosis in patients with HCC include the extent of liver dysfunction, tumor burden, and patient performance status[8]. Tumor size, one of the determinants of tumor burden, has been identified as an independent predictor of overall survival, with larger tumors generally predicting poorer outcomes[9,10]. Despite this, there is currently no consensus on the inclusion of tumor size in HCC staging systems. Some systems, such as the Barcelona Clinic Liver Cancer (BCLC) system[11] and American Joint Committee on Cancer (AJCC) 8<sup>th</sup> edition staging system[12], include size, while others, such as the Hong Kong Liver Cancer (HKLC) classification[13], do not. Furthermore, the size cut-off may vary in systems that incorporate tumor size, and when used to guide management, such as in the BCLC system, surgical resection remains the primary treatment modality for patients with a single tumor, regardless of tumor size.

Despite being recommended as the first-line treatment for early-stage tumors, resection is still contentious for giant HCC ( $\geq 10$  cm in diameter). Studies on the long-term survival rates after resection of giant and non-giant HCCs have yielded conflicting results. In studies by Noh *et al*[14] and Allemann *et al*[15], no significant difference in survival was found between patients with giant and non-giant HCC. Conversely, studies by Fang *et al*[16] and Lee *et al*[17] found poorer survival outcomes in patients with giant HCC. Furthermore, the prognosis after resection of single large HCCs ( $\geq 5$  cm) has been shown to be closer to intermediate-stage tumors than single tumors of smaller size[18,19]. In light of conflicting evidence, this study aimed to investigate whether oncological outcomes and safety profiles of surgical resection differ between giant and non-giant HCC.

## MATERIALS AND METHODS

### Search strategy and selection criteria

This meta-analysis was conducted in accordance with the Preferred Reporting Items for Systematic

Reviews and Meta-Analyses guidelines. A search was conducted using PubMed, MEDLINE (via Ovid), EMBASE, and Cochrane Central databases, from inception to 17 December 2021. A combination of search terms such as "HCC" or "liver cancer", "surgical resection" or "hepatectomy" or "liver resection", "giant" or "huge" or "10 cm" was used. Only English studies were shortlisted for screening purposes. The articles were first screened by their titles and abstracts. Subsequently, full texts of suitable articles were reviewed for inclusion. The search, article review, quality assessment, and data extraction were conducted independently by two authors (Lee AJ and Wu AG). All disagreements were resolved by consensus or by appeal to a senior author. The study protocol was registered with PROSPERO (Number: CRD42022297772).

### **Inclusion criteria**

Cohort and case-control studies were included. Only studies designed to compare the outcomes of resection of giant *vs* non-giant HCC and provided Kaplan-Meier curves for overall survival (OS) or disease-free survival (DFS) were included. In duplicate studies, the most recent study was chosen.

### **Exclusion criteria**

Old studies published before 2000 were excluded from the meta-analysis to ensure that this study was relevant to current practice, as surgical techniques have been refined since then. Studies with a high risk of publication bias such as case reports and series were excluded. Reviews, editorials, conference abstracts, and non-human studies were excluded from the meta-analysis.

### **Quality assessment**

The quality of all the studies was assessed using the Newcastle – Ottawa scale for cohort studies. Studies that scored 7–9 points, 4–6 points, and 3 or fewer points were considered to have a low, moderate, and high risk of bias, respectively.

### **Data extraction and reconstruction of individual patient data**

Two review authors (Lee AJ and Wu AG) independently extracted the publication details (name of the first author, year of publication, and country) and study characteristics (patient demographics, tumor characteristics, Child Pugh score, OS, DFS, hospital mortality, and postoperative complications) from each study. The Child–Pugh score was dichotomized into Child’s A *vs* Child’s B or higher. Individual patient data (IPD) were reconstructed from available Kaplan-Meier survival curves using an iterative algorithm initially proposed by Guyot *et al*[20].

### **Data Synthesis**

The primary endpoints of this study were OS and DFS, while the secondary endpoints were postoperative complications and mortality. Additionally, we investigated whether non-size tumor and liver characteristics such as vascular invasion, multinodularity and presence of Child’s B or higher cirrhosis in non-giant tumors with respect to giant tumors. After extracting the relevant information on OS and DFS from the published survival curves, a one-stage analysis was performed using Cox proportional hazard models based on the shared frailty model. The frailty model was chosen to account for study heterogeneity by incorporating a random-effects term that modelled patients within each study as failure-prone, similar to other individuals in the same study. Stratified Cox models were generated for sensitivity analysis. The stratified Cox models were adjusted for inter-study heterogeneity by allowing patients from a study to share a baseline hazard unique only to the study while constraining partial likelihood estimates of the Cox coefficients to be equal across strata. As the proportional hazard assumption was not upheld at a longer follow-up duration, the restricted mean survival time (RMST) at various time points was also calculated as an alternative measure of treatment effect that does not require model assumptions. Additionally, a two-stage analysis was performed using inverse-variance weighted random-effects meta-analysis.

HR will be presented for the primary endpoints of DFS and OS, and OR for the secondary dichotomous outcomes with their respective 95%CI. Random-effects models were used for all analyses because of the high heterogeneity among the studies.

All analyses were performed using R (version 4.1.2), with statistical significance set at  $P < 0.05$ .

## **RESULTS**

The search yielded 1682 potentially relevant studies. After duplicate removal and abstract screening, 153 full-text articles were reviewed, of which 24 studies[14–17,21–40] were deemed eligible for meta-analysis. All 24 studies obtained a score of 7 or higher on the Newcastle-Ottawa scale, indicating that they were of high quality. In the overall cohort of 23747 patients, there were 3326 patients in the giant HCC ( $\geq 10$  cm) group and 20421 patients in the non-giant HCC ( $< 10$  cm) group (Figure 1). A summary of the study’s characteristics is provided in Table 1 and 2.

**Table 1 Basic characteristics of included studies, hepatocellular carcinoma < 10 cm**

Study	Year	Follow-up, mo	No.	Age, yr	Sex (M/F)	Tumour size, cm	Cirrhosis, n (%)	Child-Pugh class, n (%)	
								A	B + C
Allemann <i>et al</i> [15]	2013	25	79	67 (21-85)	NA	4.9 (1-9)	61 (77)	75 (95)	4 (5)
Chang <i>et al</i> [21]	2016	72.5	10167	NA	7618/2711	NA	1114 (11)	NA	NA
Choi <i>et al</i> [22]	2009	36	447	53.3 (9.7)	344/103	NA	244 (55)	443 (99)	4 (1)
Fang <i>et al</i> [16]	2019	20	104	NA	85/19	NA	93 (89)	101 (97)	3 (3)
Giulianti <i>et al</i> [23]	2013	NA	28	65.8 (8.8)	22/6	7.9 (7-8.1)	NA	28 (100)	0 (0)
Huang <i>et al</i> [24]	2016	26	272	NA	242/30	NA	90 (82)	NA	NA
Jo <i>et al</i> [25]	2011	30	40	54.6 (10.5)	36/4	3.81 (2.06)	NA	35 (88)	5 (13)
Lee <i>et al</i> [17]	2021	NA	3559	59.1 (12.1)	2716/843	3.36 (2.14)	NA	NA	NA
Lewis <i>et al</i> [26]	2019	22	26	NA	NA	NA	NA	NA	NA
Liau <i>et al</i> [27]	2005	27	111	63.0 (12.0)	80/31	6.1 (2.5)	40 (36)	104 (94)	7 (6)
Nagano <i>et al</i> [28]	2005	NA	143	62.0 (9.0)	112/31	3.25 (1.2-9.5)	81 (57)	101 (71)	NA
Noh <i>et al</i> [14]	2016	26.4	73	56.85 (10.7)	56/17	NA	NA	NA	NA
Poon <i>et al</i> [29]	2002	56	368	54.1 (12.2)	295/73	5.4 (2.6)	203 (55)	NA	NA
Shah <i>et al</i> [30]	2007	34	165	62.0 (14.0)	NA	4.7 (2.2)	NA	145 (88)	14 (8)
Tanaka <i>et al</i> [31]	2015	39	291	67 (61-73)	220/71	4 (2.3 – 5)	134 (46)	270 (93)	21 (7)
Taniai <i>et al</i> [32]	2008	22.5	291	64.1 (8.7)	225/66	3.71 (1.91)	156 (54)	209 (72)	82 (28)
Thng <i>et al</i> [33]	2015	22	63	59 (27-81)	50/13	NA	NA	60 (95)	3 (5)
Wakayama <i>et al</i> [34]	2017	57	521	62.8 (10.1)	427/94	4 (2.1)	NA	511 (98)	8 (2)
Yamashita <i>et al</i> [35]	2011	NA	412	64.0 (3.0)	328/84	3.8 (2.2)	NA	246 (60)	166 (40)
Yang <i>et al</i> [37]	2013	NA	293	47.0 (13.0)	263/57	6.7 (3.8)	201 (69)	231 (79)	62 (21)
Yang <i>et al</i> [36]	2014	NA	781	NA	635/146	NA	NA	768 (98)	51 (7)
Yeh <i>et al</i> [38]	2003	16.4	985	55.7 (13.11)	776/209	4.5 (2.4)	NA	NA	NA
Zhong <i>et al</i> [39]	2017	NA	707	NA	612/95	NA	520 (74)	672 (95)	35 (5)
Zhu <i>et al</i> [40]	2015	29.4	495	50.3 (11.2)	436/59	4.8 (2.3)	129 (26)	431 (87)	64 (13)

HCC: Hepatocellular carcinoma; NA: Not available; M: Male; F: Female.

### Primary outcomes

Among the included studies, all 24 had extractable data for OS. Non-giant HCC had a lower HR at 0.53 (95%CI: 0.50-0.55,  $P < 0.001$ ; [Figure 2](#)) with the one-stage frailty model, and a similarly significant trend was seen with the stratified HR at 0.53 (95%CI: 0.50-0.55,  $P < 0.001$ ; [Figure 2](#)). RMST at 1-, 5- and 10-years showed significantly increased hazards for giant HCC. The estimated 1-year OS from the reconstructed IPD was 90.1% for non-giant HCC and 69.5% for giant HCC (RMST 0.91, 95%CI: 0.90-0.92,  $P < 0.001$ ; [Figure 2](#)). Two-stage meta-analysis showed that non-giant HCC has a HR of 0.60 (95%CI: 0.50-0.72,  $P < 0.01$ ; [Figure 2](#)).

Among the included studies, 17 studies[14-17,22,25-27,29-32,34,35,37,40] had extractable data for DFS. Non-giant HCC had a lower HR at 0.62 (95%CI: 0.58-0.84,  $P < 0.001$ ; [Figure 3](#)) in the one-stage frailty model, and a similarly significant trend was seen with the stratified HR at 0.61 (95%CI: 0.57-0.65,  $P < 0.001$ ; [Figure 3](#)). RMST at 1-, 5- and 10-years all shown significantly increased hazards for giant HCC. The estimated 1-year DFS from the reconstructed IPD was 58.9% for non-giant HCC and 35.7% for giant HCC (RMST 0.82, 95%CI: 0.80-0.84,  $P < 0.001$ ; [Figure 3](#)). Two-stage meta-analysis showed that non-giant HCC has a HR of 0.63 (95%CI: 0.52-0.76,  $P < 0.01$ ; [Figure 3](#)).

### Secondary outcomes

Among the included studies, 18 studies[15,17,22,24,25,27-32,34-40] reported 30-d mortality rates whereas only two studies[36,39] reported 90-d mortality rates ([Figure 4](#)). While resection of non-giant HCC had lower odds of death within the first 30 d after surgery, the difference was not statistically



**Table 2 Basic characteristics of included studies, hepatocellular carcinoma  $\geq 10$  cm**

Study	Year	Follow-up, mo	No.	Age, yr	Sex (M/F)	Tumour size, cm	Cirrhosis, n (%)	Child-Pugh class, n (%)	
								A	B + C
Allemann <i>et al</i> [15]	2013	25	22	72 (36-88)	NA	13.5 (10-21)	9 (41)	22 (100)	0 (0)
Chang <i>et al</i> [21]	2016	72.5	912	NA	740/162	NA	166 (18)	NA	NA
Choi <i>et al</i> [22]	2009	36	50	50.8 (12.5)	34/16	NA	13 (26)	48 (96)	2 (4)
Fang <i>et al</i> [16]	2019	20	84	NA	76/8	NA	72 (86)	77 (92)	7 (8)
Giulianti <i>et al</i> [23]	2013	NA	37	62.2 (11)	28/9	12 (11-15)	NA	36 (97)	1 (3)
Huang <i>et al</i> [24]	2016	26	127	NA	114/13	NA	90 (71)	NA	NA
Jo <i>et al</i> [25]	2011	30	11	52.4 (8.4)	6/5	14.5 (4.11)	NA	11 (100)	0 (0)
Lee <i>et al</i> [17]	2021	NA	426	55.7 (14.3)	345/81	13.14 (4.95)	NA	NA	NA
Lewis <i>et al</i> [26]	2019	22	16	NA	NA	NA	NA	NA	NA
Liau <i>et al</i> [27]	2005	27	82	62.0 (14.0)	48/34	14.7 (4.1)	8 (10)	73 (89)	5 (6)
Nagano <i>et al</i> [28]	2005	NA	26	56.2 (12.2)	19/7	14.8 (10-30)	5 (19)	22 (85)	NA
Noh <i>et al</i> [14]	2016	26.4	41	55.1 (10.8)	33/8	NA	NA	NA	NA
Poon <i>et al</i> [29]	2002	56	120	50.9 (12.8)	99/21	13.8 (3)	32 (27)	NA	NA
Shah <i>et al</i> [30]	2007	34	24	57.0 (15.0)	NA	13.1 (2.9)	NA	24 (100)	0 (0)
Tanaka <i>et al</i> [31]	2015	39	24	64.5 (54-71)	20/4	13 (11.2-14.1)	7 (29)	20 (83)	1 (4)
Taniai <i>et al</i> [32]	2008	22.5	29	62.0 (9.4)	26/3	13.45 (2.77)	12 (41)	23 (79)	6 (21)
Thng <i>et al</i> [33]	2015	22	23	63 (34-84)	20/3	NA	NA	20 (87)	3 (13)
Wakayama <i>et al</i> [34]	2017	57	54	63.9 (12.7)	43/10	12.4 (3.7)	NA	49 (92)	4 (8)
Yamashita <i>et al</i> [35]	2011	NA	53	60.0 (2.0)	48/5	13.2 (0.4)	NA	38 (72)	15 (28)
Yang <i>et al</i> [37]	2013	NA	258	45.0 (12)	212/46	13.2 (4.1)	171 (66)	217 (84)	41 (16)
Yang <i>et al</i> [36]	2014	NA	304	NA	242/62	NA	NA	250 (83)	16 (5)
Yeh <i>et al</i> [38]	2003	16.4	211	47.8 (13.4)	164/74	13.9 (3.4)	NA	NA	NA
Zhong <i>et al</i> [39]	2017	NA	150	47.3 (10.9)	123/27	12.4 (2.5)	88 (59)	142 (95)	8 (5)
Zhu <i>et al</i> [40]	2015	29.4	244	46.8 (11.3)	209/35	12 (2.3)	67 (27)	210 (86)	34 (14)

HCC: Hepatocellular carcinoma; NA: Not available; M: Male; F: Female.

significant (OR 0.73, 95%CI: 0.50-1.08,  $P = 0.116$ ). No significant heterogeneity was observed ( $I^2 = 0\%$ ,  $P = 0.60$ ). In the two studies that reported the 90-d mortality rate, the 90-d mortality rate was higher than the 30-d mortality rate; however, no significant difference was found between the different tumor size groups.

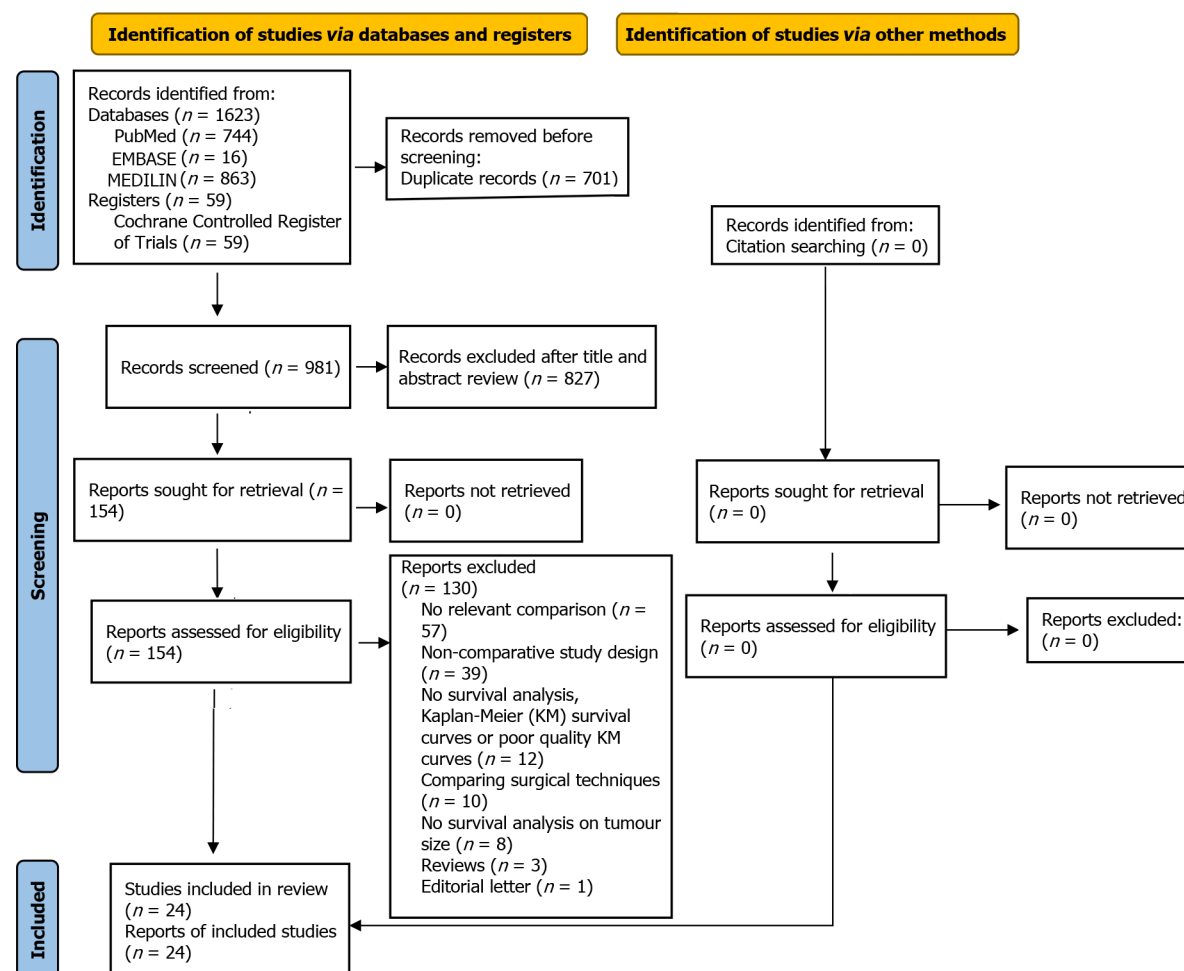
Among the studies included, 15 studies[15,22,25,27-32,35-40] reported major postoperative complications (Figure 4). While resection of non-giant HCC had lower odds of major postoperative complications, the difference was not statistically significant (OR 0.81, 95%CI: 0.62-1.06,  $P = 0.140$ ). Substantial heterogeneity was observed among the included studies ( $I^2 = 71\%$ ,  $P < 0.01$ ).

Among the included studies, six studies[22,27,30,31,34,37] reported post-hepatectomy liver failure (PHLF) (Figure 4). While resection of non-giant HCC had lower odds of PHLF, the difference was not statistically significant (OR 0.59, 95%CI: 0.17-2.05,  $P = 0.41$ ). No significant heterogeneity was observed ( $I^2 = 45\%$ ,  $P = 0.10$ ).

Among the included studies, 20 studies[14-16,21-25,27-34,36-38,40] reported on vascular invasion, 13 studies[15,16,21,22,24,27-29,31,32,37,39,40] on cirrhosis, 16 studies[15,16,22,23,25,27,28,30-37,39,40] on Child Pugh's score and 9 studies[21,22,24,27,29,32,34,37,40] on tumor number (Table 3). While non-giant HCC was found to have significantly lower odds of vascular invasion (OR 0.367, 95%CI: 0.236-0.572,  $P < 0.0001$ ) and multinodular tumors (OR 0.592, 95%CI: 0.376-0.939,  $P < 0.0259$ ), it was found to have significantly higher odds of cirrhosis (OR 1.955, 95%CI: 1.317-2.903,  $P = 0.0009$ ). No significant difference was found between the different tumor size groups for presence of Child-Pugh B and above (OR 1.008, 95%CI: 0.745-1.364,  $P = 0.9592$ ).

**Table 3 Comparison of tumor characteristics and liver function**

Factor	OR	95%CI	P value
Vascular invasion	0.367	0.236-0.572	< 0.0001
Multinodular	0.592	0.374-0.939	0.0259
Child-Pugh score	1.008	0.745-1.364	0.9592
Cirrhosis	1.955	1.317-2.903	0.0009

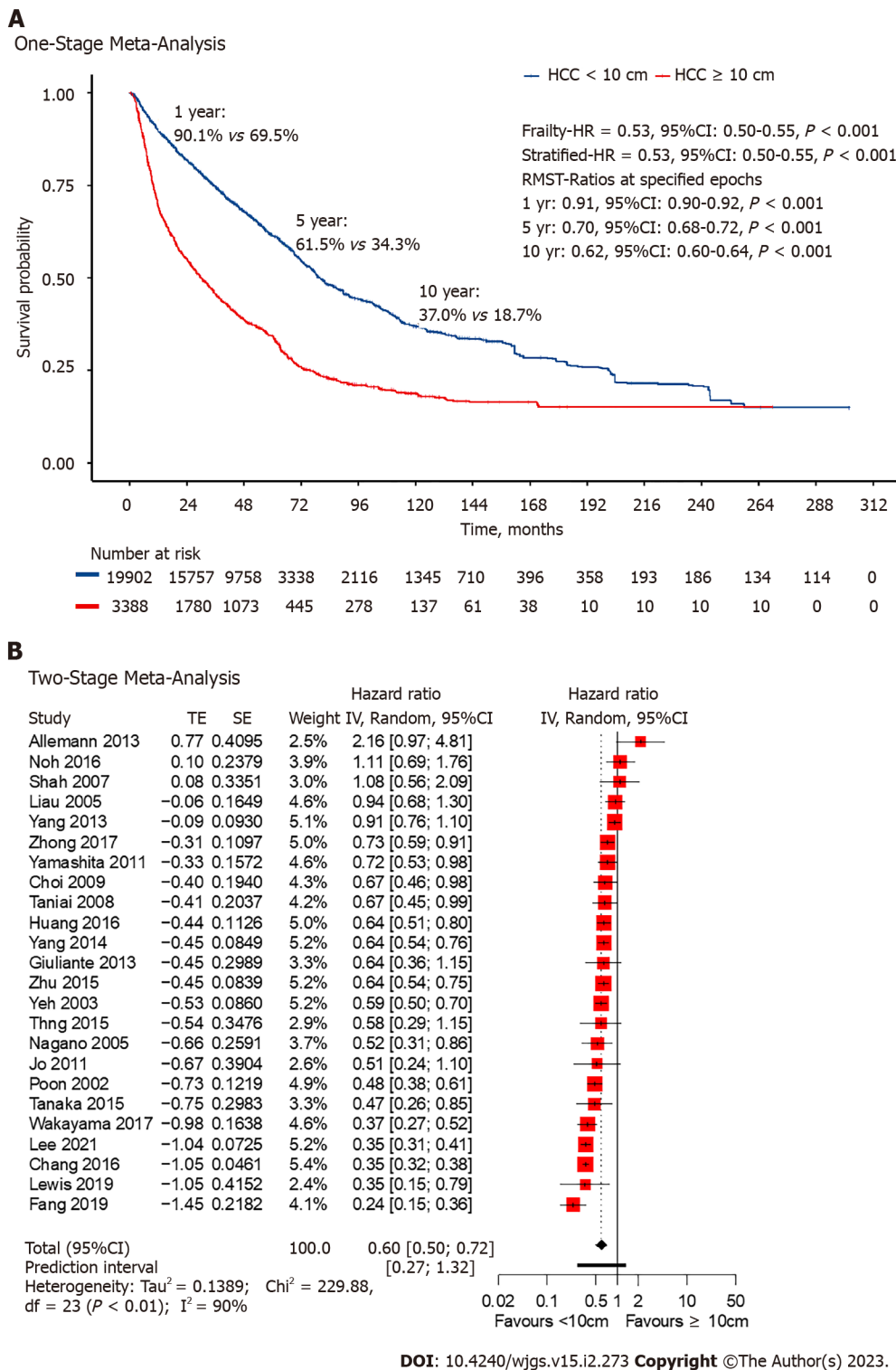


DOI: 10.4240/wjgs.v15.i2.273 Copyright ©The Author(s) 2023.

**Figure 1 Preferred Reporting Items for Systematic Reviews and Meta-Analysis flow diagram.**

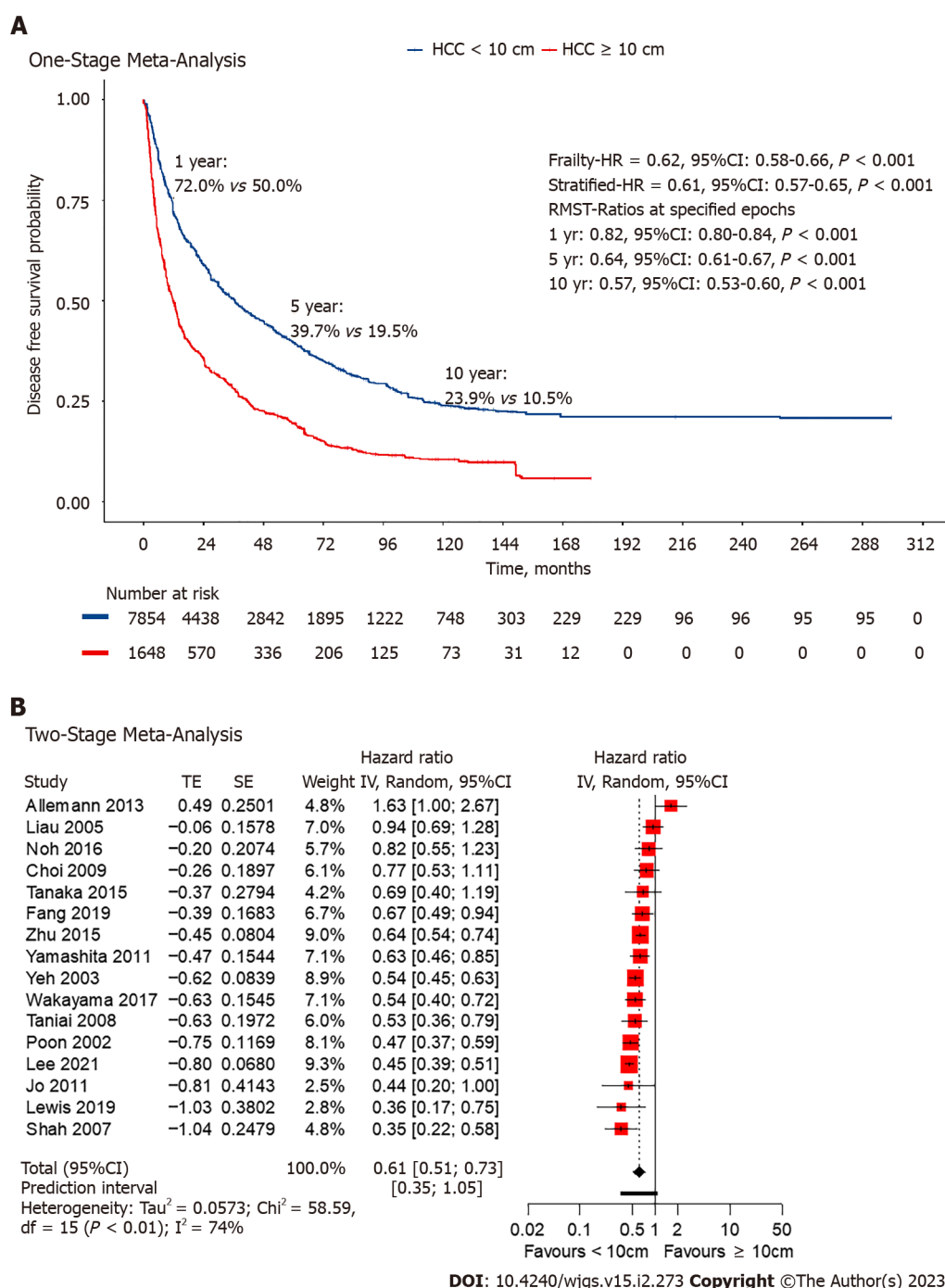
## DISCUSSION

In this meta-analysis of 23747 patients, surgical resection of non-giant HCC was associated with approximately half the rate of death from any cause and a lower rate of disease recurrence than surgical resection of giant HCC. These pooled associations showed a significant disparity in long-term outcomes between the two groups despite the use of the same treatment modality. Furthermore, giant HCC is shown to be associated with higher odds of vascular invasion and multinodular tumors, factors that have been shown to be associated with poorer outcomes[41,42]. In contrast, the short-term perioperative outcomes and safety profiles, measured by 30-d mortality and postoperative complications, respectively, did not differ significantly between the two groups. Hence, while HCC size may not affect the safety and efficacy of surgical resection in the short term, this study illustrates not only a possible correlation between a larger tumor size and poorer outcomes, but also demonstrates that giant HCC have different tumor characteristics from non-giant HCC. Therefore, giant HCC should be staged differently because they are associated with poorer outcomes and prognostically poorer tumor characteristics.



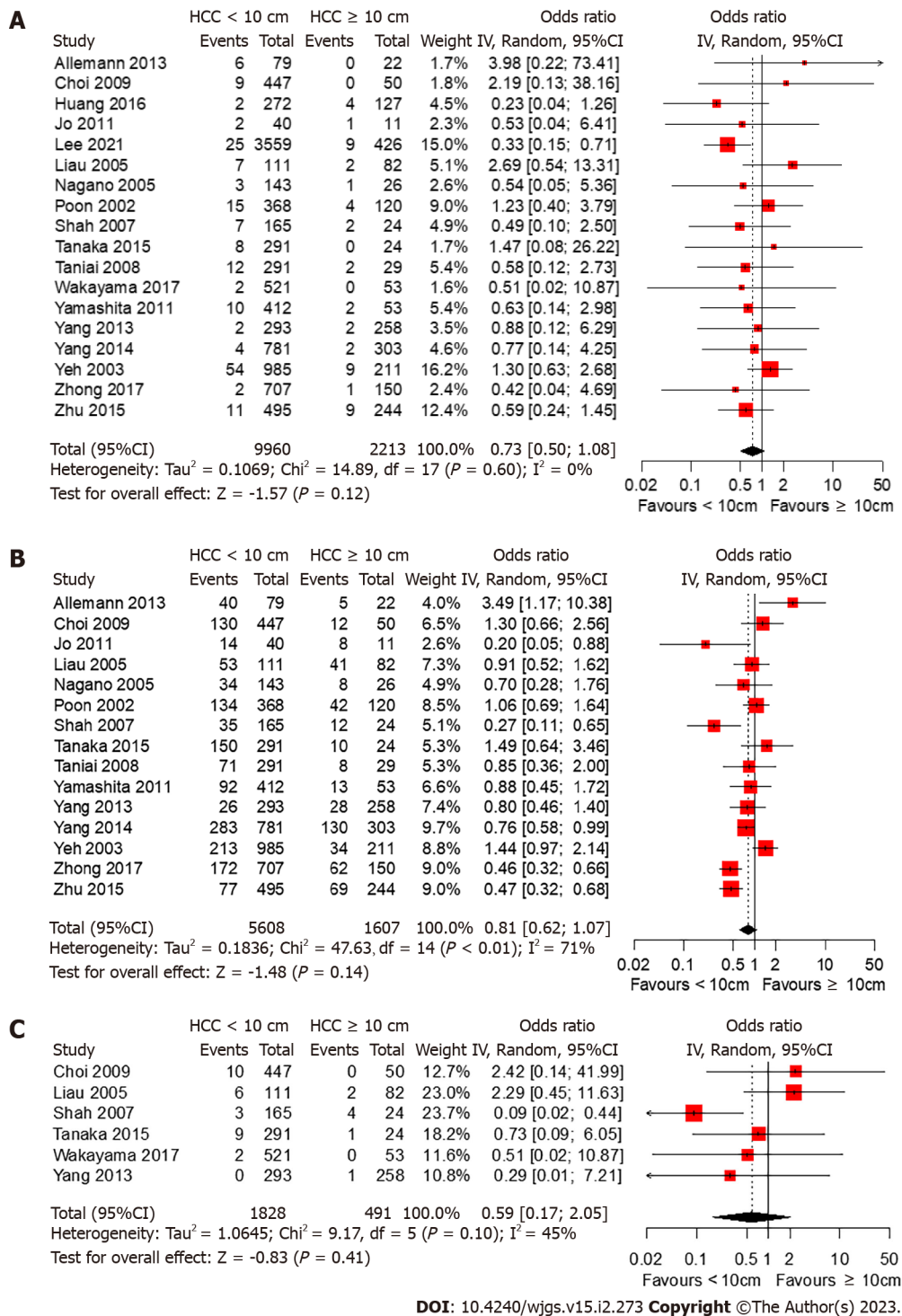
**Figure 2 Overall survival curves, numbers-at-risk table and Forest plot.** A: Overall survival (OS) curves and numbers-at-risk table for giant vs non-giant hepatocellular carcinoma from reconstructed individual patient data; B: OS forest plot. HCC: Hepatocellular carcinoma; HR: Hazard ratio; RMST: Restricted mean survival time.

Despite being a major risk factor for the development of HCC[43], cirrhosis and cirrhotic severity were not found to be associated with larger tumor size. In this study, non-giant HCC were found to have a higher risk of developing cirrhosis. A possible explanation for this is that cirrhotic patients are more likely receiving 6 moly ultrasound scan surveillance[44]. Therefore, tumors are likely to be detected before they reach larger sizes. Similarly, no association was found between the presence of Child-Pugh B cirrhosis and higher and larger tumor sizes. This shows that larger tumor size may not be correlated with greater odds of cirrhosis or more severe cirrhosis.



**Figure 3 Disease-free survival curve, numbers-at-risk table and Forest plot.** A: Disease-free survival (DFS) curves and numbers-at-risk table for giant vs non-giant hepatocellular carcinoma from reconstructed individual patient data; B: DFS forest plot. HCC: Hepatocellular carcinoma; HR: Hazard ratio; RMST: Restricted mean survival time.

The myriad of HCC staging systems testifies that no single system is 'ideal'. The BCLC staging system is widely accepted in clinical practice and classifies patients into stages based on their performance status (PS) and Child-Pugh score[11]. The BCLC staging system does not place sufficient importance on tumor size when stratifying patients. Tumor size only plays a role in sorting patients with a single tumor, PS 0, and Child-Pugh A into very early stage (0) and early-stage (A), for which < 2 cm is the cut-off set for being classified as stage 0. However, this classification into stages 0 and A seems inconsequential for patients with single tumors, since the final determinant of management options in this group of patients is portal pressure and bilirubin levels, with no consideration given to size. This is evident because surgical resection is the first option for patients with normal total bilirubin levels and no evidence of clinically significant portal hypertension. Given the findings of this study, BCLC stage A patients with single tumors should be further classified, based on tumor size, into giant and non-giant subgroups since survival after surgical resection differs significantly between these two groups. As a cut-off size of 10 cm was used, this study was unable to determine the exact size beyond which the



**Figure 4 Forest plots for morbidity and 30-d mortality.** A: Forest plot of the 30-d mortality rate; B: Forest plot of the postoperative complication rate; C: Forest plot of post-hepatic liver failure rate. HCC: Hepatocellular carcinoma.

oncological prognosis was inferior.

Similarly, in other staging systems, other prognostic factors have taken precedence over tumor size. In the latest AJCC 8<sup>th</sup> edition staging system[12], solitary tumors ≤ 2 cm are now staged as T1a regardless of microvascular invasion, which differs from the 7<sup>th</sup> edition, where microvascular invasion determines whether the tumor is T1 or T2. However, for tumors > 2 cm in diameter, vascular invasion and multifocality play a larger role in staging; the absence of these factors would place the tumor in T1b, regardless of tumor size. In both the Cancer of the Liver Italian Program score[45,46] and Okuda staging system[47], the criteria for tumor size are ambiguous, using relative tumor size compared to the liver (tumor burden) as the cut-off. In contrast, the HKLC classification was constructed solely based on PS, Child-Pugh score, liver tumor status, and the presence of extrahepatic vascular invasion or metastasis, without considering size[13]. Hence, many of the current staging systems ignore tumor size, and even in



those that include size, size plays a limited role in staging the tumors. However, as giant HCC has been shown to be associated with vascular invasion and multinodular tumors, these factors should not be treated as mutually exclusive. From a technical perspective, the surgical resection of giant HCC is challenging. A large tumor size limits the surgical working space, increases the risk of tumor seeding from surgical manipulation, and distorts liver anatomy, thus potentially increasing operative difficulty. Further, it is likely that resection of large tumor entails dissection zone in proximity to hilum or major vessels, thus increasing the likelihood of bleeding or bile leak. In addition, surgical resection of giant HCC is in general entails major hepatectomy with small future liver remnant and associated risk of PHLF.

Although both groups had similar 30-d postoperative mortality and major complication rates, these may not accurately reflect the safety profile of surgical resection in each group. As the 90-d postoperative mortality rate has rarely been reported, only the 30-d mortality rate could be used as an indicator of postoperative mortality. However, a review by Egger *et al*[48] found that most studies reported an approximate doubling of mortality rates between 30 and 90 d following surgery. As the findings of this study were based on 30-d mortality rates, they may not accurately reflect the safety profile of surgical resection. Additionally, many studies did not specify which postoperative complications the patients experienced, and only 6 of the 24 studies[22,27,30,31,34,37] specified if the patients developed PHLF. Since PHLF has been found to be an independent predictor of mortality[2], the development of PHLF after HCC resection may be more indicative of the safety profile than complication rates alone. Thus, to improve the safety profile assessment of surgical resection, more precise reporting of major postoperative complications, particularly PHLF, and reporting of the 90-d mortality rate are required.

Although long-term outcomes for giant HCCs are significantly worse than those for non-giant HCCs, surgery continues to be the preferred treatment option. There is consensus that non-surgical treatment options for single giant HCC are associated with poorer outcomes than surgical resection, although many studies supporting surgical resection in the management of giant HCC have used transarterial chemoembolization (TACE) as a comparison[49-51]. In a recent meta-analysis of 1892 patients, Gui *et al* [52] found that TACE + radiofrequency ablation offers oncological outcomes comparable to surgical resection with lower morbidity. Although the meta-analysis was not specific to the treatment of giant HCC, it opens up the possibility of exploring the multimodal and combination approaches in patients with giant HCC. While surgical resection remains the current preferred treatment option for patients with giant HCC, future prospective studies should investigate different modalities of intervention for single or multiple giant HCC to determine whether these treatments can provide better quality of life outcomes with low therapy-associated morbidity. In addition, with scientific progress and innovation, radiation therapies including external beam radiation and selective internal radiation therapy, have a complementary role in the multidisciplinary care of patients with HCC[53].

This study has several limitations that should be considered. First, all included studies were retrospective studies with a risk of selection bias. As such, the favorable safety profile of giant HCC resection and the similar liver function in both giant and non-giant HCC may in part be due to the selection of younger and fitter patients with well-preserved liver function, or a publication bias. Second, there was a high degree of heterogeneity among studies. Hence, caution should be exercised when interpreting the results. Third, survival data, such as OS and DFS, were manually extracted from the survival curves. Hence, the possibility of errors during the data extraction cannot be eliminated. Fourth, although the algorithm used allows for a close approximation of the original IPD, it does not provide further details, such as patient-level covariates, which may provide greater insight. Lastly, this study was not able to assess whether total tumor volume (calculated by the equation  $(4\pi \times r1 \times r2 \times r3)/3$ ; where  $r1$ ,  $r2$ , and  $r3$  are half of the largest, intermediate, and shortest tumor dimensions respectively) could be a prognosticator of oncological outcomes.

## CONCLUSION

In summary, the results of this study show that surgical resection of giant HCC is associated with poorer long-term survival outcomes and should therefore be treated as a separate disease entity. While it was found that surgical resection of both giant and non-giant HCC had similar safety profiles, this may be confounded by poor reporting of the 90-d mortality rate. HCC staging systems should account for these size differences.

## ARTICLE HIGHLIGHTS

### Research background

There is currently no consensus on the inclusion of tumor size in hepatocellular carcinoma (HCC) staging systems. Furthermore, the size cut-off may vary in systems that incorporate tumor size, and a

consensus is warranted for inclusion of size into the staging criteria with cut-off to be determined by multi-center collaborative clinical studies.

### Research motivation

Research on long-term survival after resection of giant ( $\geq 10$  cm) and non-giant HCC ( $< 10$  cm) has produced conflicting results.

### Research objectives

This study aimed to investigate whether oncological outcomes and safety profiles of resection differ between giant and non-giant HCC.

### Research methods

PubMed, MEDLINE, EMBASE, and Cochrane databases were searched. Studies designed to investigate the outcomes of giant *vs* non-giant HCC were included. The primary endpoints were overall survival (OS) and disease-free survival (DFS). The secondary endpoints were postoperative complications and mortality rates. All studies were assessed for bias using the Newcastle–Ottawa Scale.

### Research results

24 retrospective cohort studies involving 23747 patients (giant = 3326; non-giant = 20421) who underwent HCC resection were included. OS was reported in 24 studies, DFS in 17 studies, 30-d mortality rate in 18 studies, postoperative complications in 15 studies, and post-hepatectomy liver failure (PHLF) in six studies. The HR was significantly lower for non-giant HCC in both OS (HR 0.53, 95%CI: 0.50-0.55,  $P < 0.001$ ) and DFS (HR 0.62, 95%CI: 0.58-0.84,  $P < 0.001$ ). No significant difference was found for 30-d mortality rate (OR 0.73, 95%CI: 0.50-1.08,  $P = 0.116$ ), postoperative complications (OR 0.81, 95%CI: 0.62-1.06,  $P = 0.140$ ), and PHLF (OR 0.81, 95%CI: 0.62-1.06,  $P = 0.140$ ).

### Research conclusions

Resection of giant HCC is associated with poorer long-term outcomes. The safety profile of resection was similar in both groups; however, this may have been confounded by reporting bias. HCC staging systems should account for the size differences.

### Research perspectives

Future prospective studies should investigate different modalities of intervention for giant HCC to determine whether these treatments can provide better quality of life outcomes with low therapy-associated morbidity.

## ACKNOWLEDGEMENTS

We thank Dr. Chan Yiong Huak (National University Health System) for reviewing and providing statistical guidance.

## FOOTNOTES

**Author contributions:** Lee AJ, Wu AG, Yew KC, Shelat VG confirm contribution to study conception and design; Lee AJ, Wu AG contributed to data collection; Lee AJ, Wu AG contributed to analysis and interpretation of results; Lee AJ, Wu AG, Yew KC, Shelat VG contributed to draft manuscript preparation; All authors reviewed the results and approved the final version of the manuscript

**Conflict-of-interest statement:** The authors declare that they have no affiliations with or involvement in any organization or entity with any financial interests in the subject matter or materials discussed in this manuscript.

**PRISMA 2009 Checklist statement:** The authors have read the PRISMA 2009 Checklist, and the manuscript was prepared and revised according to the PRISMA 2009 Checklist.

**Open-Access:** This article is an open-access article that was selected by an in-house editor and fully peer-reviewed by external reviewers. It is distributed in accordance with the Creative Commons Attribution NonCommercial (CC BY-NC 4.0) license, which permits others to distribute, remix, adapt, build upon this work non-commercially, and license their derivative works on different terms, provided the original work is properly cited and the use is non-commercial. See: <https://creativecommons.org/licenses/by-nc/4.0/>

**Country/Territory of origin:** Singapore

**ORCID number:** Aaron JL Lee 0000-0001-8111-5640; Andrew GR Wu 0000-0003-0082-4766; Kuo Chao Yew 0000-0003-2005-675X; Vishal G Shelat 0000-0003-3988-8142.

**S-Editor:** Liu GL

**L-Editor:** A

**P-Editor:** Liu GL

## REFERENCES

- 1 Kim E, Viatour P. Hepatocellular carcinoma: old friends and new tricks. *Exp Mol Med* 2020; **52**: 1898-1907 [PMID: 33268834 DOI: 10.1038/s12276-020-00527-1]
- 2 Sheriff S, Madhavan S, Lei GY, Chan YH, Junnarkar SP, Huey CW, Low JK, Shelat VG. Predictors of mortality within the first year post-hepatectomy for hepatocellular carcinoma. *J Egypt Natl Canc Inst* 2022; **34**: 14 [PMID: 35368234 DOI: 10.1186/s43046-022-00113-8]
- 3 McGlynn KA, Petrick JL, El-Serag HB. Epidemiology of Hepatocellular Carcinoma. *Hepatology* 2021; **73** Suppl 1: 4-13 [PMID: 32319693 DOI: 10.1002/hep.31288]
- 4 Llovet JM, Montal R, Sia D, Finn RS. Molecular therapies and precision medicine for hepatocellular carcinoma. *Nat Rev Clin Oncol* 2018; **15**: 599-616 [PMID: 30061739 DOI: 10.1038/s41571-018-0073-4]
- 5 Yang JD, Hainaut P, Gores GJ, Amadou A, Plymoth A, Roberts LR. A global view of hepatocellular carcinoma: trends, risk, prevention and management. *Nat Rev Gastroenterol Hepatol* 2019; **16**: 589-604 [PMID: 31439937 DOI: 10.1038/s41575-019-0186-y]
- 6 Jemal A, Ward EM, Johnson CJ, Cronin KA, Ma J, Ryerson B, Mariotto A, Lake AJ, Wilson R, Sherman RL, Anderson RN, Henley SJ, Kohler BA, Penberthy L, Feuer EJ, Weir HK. Annual Report to the Nation on the Status of Cancer, 1975-2014, Featuring Survival. *J Natl Cancer Inst* 2017; **109** [PMID: 28376154 DOI: 10.1093/jnci/djx030]
- 7 Halabi S, Owzar K. The importance of identifying and validating prognostic factors in oncology. *Semin Oncol* 2010; **37**: e9-18 [PMID: 20494694 DOI: 10.1053/j.seminoncol.2010.04.001]
- 8 Liu PH, Hsu CY, Hsia CY, Lee YH, Su CW, Huang YH, Lee FY, Lin HC, Huo TI. Prognosis of hepatocellular carcinoma: Assessment of eleven staging systems. *J Hepatol* 2016; **64**: 601-608 [PMID: 26551516 DOI: 10.1016/j.jhep.2015.10.029]
- 9 Wu G, Wu J, Wang B, Zhu X, Shi X, Ding Y. Importance of tumor size at diagnosis as a prognostic factor for hepatocellular carcinoma survival: a population-based study. *Cancer Manag Res* 2018; **10**: 4401-4410 [PMID: 30349373 DOI: 10.2147/CMAR.S177663]
- 10 Yang A, Xiao W, Chen D, Wei X, Huang S, Lin Y, Zhang C, Lin J, Deng F, Wu C, He X. The power of tumor sizes in predicting the survival of solitary hepatocellular carcinoma patients. *Cancer Med* 2018; **7**: 6040-6050 [PMID: 30430769 DOI: 10.1002/cam4.1873]
- 11 Reig M, Forner A, Rimola J, Ferrer-Fàbrega J, Burrel M, Garcia-Criado Á, Kelley RK, Galle PR, Mazzaferro V, Salem R, Sangro B, Singal AG, Vogel A, Fuster J, Ayuso C, Bruix J. BCLC strategy for prognosis prediction and treatment recommendation: The 2022 update. *J Hepatol* 2022; **76**: 681-693 [PMID: 34801630 DOI: 10.1016/j.jhep.2021.11.018]
- 12 Amin MB, Greene FL, Edge SB, Compton CC, Gershenwald JE, Brookland RK, Meyer L, Gress DM, Byrd DR, Winchester DP. The Eighth Edition AJCC Cancer Staging Manual: Continuing to build a bridge from a population-based to a more "personalized" approach to cancer staging. *CA Cancer J Clin* 2017; **67**: 93-99 [PMID: 28094848 DOI: 10.3322/caac.21388]
- 13 Yau T, Tang VY, Yao TJ, Fan ST, Lo CM, Poon RT. Development of Hong Kong Liver Cancer staging system with treatment stratification for patients with hepatocellular carcinoma. *Gastroenterology* 2014; **146**: 1691-700.e3 [PMID: 24583061 DOI: 10.1053/j.gastro.2014.02.032]
- 14 Noh JH, Kim TS, Ahn KS, Kim YH, Kang KJ. Prognostic factors after hepatic resection for the single hepatocellular carcinoma larger than 5 cm. *Ann Surg Treat Res* 2016; **91**: 104-111 [PMID: 27617250 DOI: 10.4174/ast.2016.91.3.104]
- 15 Allemann P, Demartines N, Bouzourene H, Tempia A, Halkic N. Long-term outcome after liver resection for hepatocellular carcinoma larger than 10 cm. *World J Surg* 2013; **37**: 452-458 [PMID: 23188527 DOI: 10.1007/s00268-012-1840-5]
- 16 Fang Q, Xie QS, Chen JM, Shan SL, Xie K, Geng XP, Liu FB. Long-term outcomes after hepatectomy of huge hepatocellular carcinoma: A single-center experience in China. *Hepatobiliary Pancreat Dis Int* 2019; **18**: 532-537 [PMID: 31543313 DOI: 10.1016/j.hbpd.2019.09.001]
- 17 Lee CW, Yu MC, Wang CC, Lee WC, Tsai HI, Kuan FC, Chen CW, Hsieh YC, Chen HY. Liver resection for hepatocellular carcinoma larger than 10 cm: A multi-institution long-term observational study. *World J Gastrointest Surg* 2021; **13**: 476-492 [PMID: 34122737 DOI: 10.4240/wjgs.v13.i5.476]
- 18 Jung YK, Jung CH, Seo YS, Kim JH, Kim TH, Yoo YJ, Kang SH, Yim SY, Suh SJ, An H, Yim HJ, Yeon JE, Byun KS, Um SH. BCLC stage B is a better designation for single large hepatocellular carcinoma than BCLC stage A. *J Gastroenterol Hepatol* 2016; **31**: 467-474 [PMID: 26332049 DOI: 10.1111/jgh.13152]
- 19 Wan L, Dong DH, Wu XN, Ding HF, Lu Q, Tian Y, Zhang XF, Li W. Single Large Nodule (>5 cm) Prognosis in Hepatocellular Carcinoma: Kinship with Barcelona Clinic Liver Cancer (BCLC) Stage A or B? *Med Sci Monit* 2020; **26**: e926797 [PMID: 33060558 DOI: 10.12659/MSM.926797]
- 20 Guyot P, Ades AE, Ouwens MJ, Welton NJ. Enhanced secondary analysis of survival data: reconstructing the data from published Kaplan-Meier survival curves. *BMC Med Res Methodol* 2012; **12**: 9 [PMID: 22297116 DOI: 10.1186/1471-2288-12-9]
- 21 Chang YJ, Chung KP, Chang YJ, Chen LJ. Long-term survival of patients undergoing liver resection for very large hepatocellular carcinomas. *Br J Surg* 2016; **103**: 1513-1520 [PMID: 27550624 DOI: 10.1002/bjs.10196]

- 22 **Choi GH**, Han DH, Kim DH, Choi SB, Kang CM, Kim KS, Choi JS, Park YN, Park JY, Kim DY, Han KH, Chon CY, Lee WJ. Outcome after curative resection for a huge ( $\geq 10$  cm) hepatocellular carcinoma and prognostic significance of gross tumor classification. *Am J Surg* 2009; **198**: 693-701 [PMID: [19268907](#) DOI: [10.1016/j.amjsurg.2008.09.019](#)]
- 23 **Giuliente F**, De Rose AM, Guerra V, Ardito F, Nuzzo G, Carr BI. Clinical characteristics and survival of European patients with resectable large hepatocellular carcinomas. *J Gastrointest Cancer* 2013; **44**: 329-335 [PMID: [23912605](#) DOI: [10.1007/s12029-013-9523-5](#)]
- 24 **Huang P**, Liu C, Li B, Zheng Y, Zou R, Huang J, Hu Z, Yuan Y. Preoperative mean corpuscular hemoglobin affecting long-term outcomes of hepatectomized patients with hepatocellular carcinoma. *Mol Clin Oncol* 2016; **4**: 229-236 [PMID: [26893867](#) DOI: [10.3892/mco.2015.705](#)]
- 25 **Jo S**. Outcome of Hepatectomy for Huge Hepatocellular Carcinoma. *Korean J Hepatobiliary Pancreat Surg* 2011; **15**: 90-100 [PMID: [26421023](#) DOI: [10.14701/kjhbps.2011.15.2.90](#)]
- 26 **Lewis RH**, Glazer ES, Bittenbinder DM, O'Brien T, Deneve JL, Shibata D, Behrman SW, Vanatta JM, Satapathy SK, Dickson PV. Outcomes Following Resection of Hepatocellular Carcinoma in the Absence of Cirrhosis. *J Gastrointest Cancer* 2019; **50**: 808-815 [PMID: [30117090](#) DOI: [10.1007/s12029-018-0152-x](#)]
- 27 **Liau KH**, Ruo L, Shia J, Padela A, Gonen M, Jarnagin WR, Fong Y, D'Angelica MI, Blumgart LH, DeMatteo RP. Outcome of partial hepatectomy for large ( $> 10$  cm) hepatocellular carcinoma. *Cancer* 2005; **104**: 1948-1955 [PMID: [16196045](#) DOI: [10.1002/cncr.21415](#)]
- 28 **Nagano Y**, Tanaka K, Togo S, Matsuo K, Kunisaki C, Sugita M, Morioka D, Miura Y, Kubota T, Endo I, Sekido H, Shimada H. Efficacy of hepatic resection for hepatocellular carcinomas larger than 10 cm. *World J Surg* 2005; **29**: 66-71 [PMID: [15599739](#) DOI: [10.1007/s00268-004-7509-y](#)]
- 29 **Poon RT**, Fan ST, Wong J. Selection criteria for hepatic resection in patients with large hepatocellular carcinoma larger than 10 cm in diameter. *J Am Coll Surg* 2002; **194**: 592-602 [PMID: [12022599](#) DOI: [10.1016/s1072-7515\(02\)01163-8](#)]
- 30 **Shah SA**, Wei AC, Cleary SP, Yang I, McGilvray ID, Gallinger S, Grant DR, Greig PD. Prognosis and results after resection of very large ( $\geq 10$  cm) hepatocellular carcinoma. *J Gastrointest Surg* 2007; **11**: 589-595 [PMID: [17393258](#) DOI: [10.1007/s11605-007-0154-7](#)]
- 31 **Tanaka S**, Iimuro Y, Hirano T, Hai S, Suzumura K, Fujimoto J. Outcomes of hepatic resection for large hepatocellular carcinoma: special reference to postoperative recurrence. *Am Surg* 2015; **81**: 64-73 [PMID: [25569068](#)]
- 32 **Taniai N**, Yoshida H, Tajiri T. Adaptation of hepatectomy for huge hepatocellular carcinoma. *J Hepatobiliary Pancreat Surg* 2008; **15**: 410-416 [PMID: [18670843](#) DOI: [10.1007/s00534-007-1317-3](#)]
- 33 **Thng Y**, Tan JK, Shridhar IG, Chang SK, Madhavan K, Kow AW. Outcomes of resection of giant hepatocellular carcinoma in a tertiary institution: does size matter? *HPB (Oxford)* 2015; **17**: 988-993 [PMID: [26334002](#) DOI: [10.1111/hpb.12479](#)]
- 34 **Wakayama K**, Kamiyama T, Yokoo H, Orimo T, Shimada S, Einama T, Kamachi H, Taketomi A. Huge hepatocellular carcinoma greater than 10 cm in diameter worsens prognosis by causing distant recurrence after curative resection. *J Surg Oncol* 2017; **115**: 324-329 [PMID: [28192617](#) DOI: [10.1002/jso.24501](#)]
- 35 **Yamashita Y**, Taketomi A, Shirabe K, Aishima S, Tsujita E, Morita K, Kayashima H, Maehara Y. Outcomes of hepatic resection for huge hepatocellular carcinoma ( $\geq 10$  cm in diameter). *J Surg Oncol* 2011; **104**: 292-298 [PMID: [21465490](#) DOI: [10.1002/jso.21931](#)]
- 36 **Yang J**, Li C, Wen TF, Yan LN, Li B, Wang WT, Yang JY, Xu MQ. Is hepatectomy for huge hepatocellular carcinoma ( $\geq 10$  cm in diameter) safe and effective? *Asian Pac J Cancer Prev* 2014; **15**: 7069-7077 [PMID: [25227793](#) DOI: [10.7314/apjcp.2014.15.17.7069](#)]
- 37 **Yang L**, Xu J, Ou D, Wu W, Zeng Z. Hepatectomy for huge hepatocellular carcinoma: single institute's experience. *World J Surg* 2013; **37**: 2189-2196 [PMID: [23665818](#) DOI: [10.1007/s00268-013-2095-5](#)]
- 38 **Yeh CN**, Lee WC, Chen MF. Hepatic resection and prognosis for patients with hepatocellular carcinoma larger than 10 cm: two decades of experience at Chang Gung memorial hospital. *Ann Surg Oncol* 2003; **10**: 1070-1076 [PMID: [14597446](#) DOI: [10.1245/aso.2003.03.072](#)]
- 39 **Zhong JH**, Pan LH, Wang YY, Cucchetti A, Yang T, You XM, Ma L, Gong WF, Xiang BD, Peng NF, Wu FX, Li LQ. Optimizing stage of single large hepatocellular carcinoma: A study with subgroup analysis by tumor diameter. *Medicine (Baltimore)* 2017; **96**: e6608 [PMID: [28403105](#) DOI: [10.1097/MD.00000000000006608](#)]
- 40 **Zhu SL**, Chen J, Li H, Li LQ, Zhong JH. Efficacy of hepatic resection for huge ( $\geq 10$  cm) hepatocellular carcinoma: good prognosis associated with the uninodular subtype. *Int J Clin Exp Med* 2015; **8**: 20581-20588 [PMID: [26884976](#)]
- 41 **Costentin CE**, Ferrone CR, Arellano RS, Ganguli S, Hong TS, Zhu AX. Hepatocellular Carcinoma with Macrovascular Invasion: Defining the Optimal Treatment Strategy. *Liver Cancer* 2017; **6**: 360-374 [PMID: [29234639](#) DOI: [10.1159/000481315](#)]
- 42 **Selçuk H**. Prognostic Factors and Staging Systems in Hepatocellular Carcinoma. *Exp Clin Transplant* 2017; **15**: 45-49 [PMID: [28301998](#) DOI: [10.6002/ect.TOND16.L11](#)]
- 43 **Llovet JM**, Kelley RK, Villanueva A, Singal AG, Pikarsky E, Roayaie S, Lencioni R, Koike K, Zucman-Rossi J, Finn RS. Hepatocellular carcinoma. *Nat Rev Dis Primers* 2021; **7**: 6 [PMID: [33479224](#) DOI: [10.1038/s41572-020-00240-3](#)]
- 44 **Frenette CT**, Isaacson AJ, Bargellini I, Saab S, Singal AG. A Practical Guideline for Hepatocellular Carcinoma Screening in Patients at Risk. *Mayo Clin Proc Innov Qual Outcomes* 2019; **3**: 302-310 [PMID: [31485568](#) DOI: [10.1016/j.mayocpiqo.2019.04.005](#)]
- 45 . A new prognostic system for hepatocellular carcinoma: a retrospective study of 435 patients: the Cancer of the Liver Italian Program (CLIP) investigators. *Hepatology* 1998; **28**: 751-755 [PMID: [9731568](#) DOI: [10.1002/hep.510280322](#)]
- 46 . Prospective validation of the CLIP score: a new prognostic system for patients with cirrhosis and hepatocellular carcinoma. The Cancer of the Liver Italian Program (CLIP) Investigators. *Hepatology* 2000; **31**: 840-845 [PMID: [10733537](#) DOI: [10.1053/he.2000.5628](#)]
- 47 **Okuda K**, Obata H, Nakajima Y, Ohtsuki T, Okazaki N, Ohnishi K. Prognosis of primary hepatocellular carcinoma. *Hepatology* 1984; **4**: 3S-6S [PMID: [6319264](#) DOI: [10.1002/hep.1840040703](#)]
- 48 **Egger ME**, Ohlendorf JM, Scoggins CR, McMasters KM, Martin RC 2nd. Assessment of the reporting of quality and

- outcome measures in hepatic resections: a call for 90-day reporting in all hepatectomy series. *HPB (Oxford)* 2015; **17**: 839-845 [PMID: [26228262](#) DOI: [10.1111/hpb.12470](#)]
- 49 **Wei CY**, Chen PC, Chau GY, Lee RC, Chen PH, Huo TI, Huang YH, Su YH, Hou MC, Wu JC, Su CW. Comparison of prognosis between surgical resection and transarterial chemoembolization for patients with solitary huge hepatocellular carcinoma. *Ann Transl Med* 2020; **8**: 238 [PMID: [32309385](#) DOI: [10.21037/atm.2019.12.157](#)]
- 50 **Zhu SL**, Zhong JH, Ke Y, Ma L, You XM, Li LQ. Efficacy of hepatic resection vs transarterial chemoembolization for solitary huge hepatocellular carcinoma. *World J Gastroenterol* 2015; **21**: 9630-9637 [PMID: [26327771](#) DOI: [10.3748/wjg.v21.i32.9630](#)]
- 51 **Min YW**, Lee JH, Gwak GY, Paik YH, Rhee PL, Koh KC, Paik SW, Yoo BC, Choi MS. Long-term survival after surgical resection for huge hepatocellular carcinoma: comparison with transarterial chemoembolization after propensity score matching. *J Gastroenterol Hepatol* 2014; **29**: 1043-1048 [PMID: [24863186](#) DOI: [10.1111/jgh.12504](#)]
- 52 **Gui CH**, Baey S, D'cruz RT, Shelat VG. Trans-arterial chemoembolization + radiofrequency ablation versus surgical resection in hepatocellular carcinoma - A meta-analysis. *Eur J Surg Oncol* 2020; **46**: 763-771 [PMID: [31937433](#) DOI: [10.1016/j.ejso.2020.01.004](#)]
- 53 **Tong VJW**, Shelat VG, Chao YK. Clinical application of advances and innovation in radiation treatment of hepatocellular carcinoma. *J Clin Transl Res* 2021; **7**: 811-833 [PMID: [34988334](#)]





Published by **Baishideng Publishing Group Inc**  
7041 Koll Center Parkway, Suite 160, Pleasanton, CA 94566, USA

**Telephone:** +1-925-3991568

**E-mail:** [bpgoffice@wjgnet.com](mailto:bpgoffice@wjgnet.com)

**Help Desk:** <https://www.f6publishing.com/helpdesk>

<https://www.wjgnet.com>

