

World Journal of *Clinical Cases*

World J Clin Cases 2022 December 16; 10(35): 12804-13147



Contents

Thrice Monthly Volume 10 Number 35 December 16, 2022

EVIDENCE REVIEW

- 12804 Principle and progress of radical treatment for locally advanced esophageal squamous cell carcinoma
Zhang XF, Liu PY, Zhang SJ, Zhao KL, Zhao WX

REVIEW

- 12812 Minimally invasive techniques in benign and malignant adrenal tumors
Dogrul AB, Cennet O, Dincer AH
- 12822 Planning issues on linac-based stereotactic radiotherapy
Huang YY, Yang J, Liu YB

MINIREVIEWS

- 12837 Hepatitis of unknown etiology in children: Current evidence and association
Zhong R, Yi F, Xiang F, Qiu YF, Zhu L, Zou YH, Wang W, Zhang Q
- 12844 Anatomical basis for pancreas transplantation *via* isolated splenic artery perfusion: A literature review
Dmitriev I, Oganesyan M, Popova A, Orlov E, Sinelnikov M, Zharikov Y
- 12854 Antenatal imaging: A pictorial review
Ece B, Aydın S, Kantarci M
- 12875 Real role of growth factor receptor-binding protein 10: Linking lipid metabolism to diabetes cardiovascular complications
Yang Y, Yao HJ, Lin WJ, Huang SC, Li XD, He FZ

ORIGINAL ARTICLE

Retrospective Study

- 12880 Radiological and clinical outcomes of midline lumbar fusion on sagittal lumbar-pelvic parameters for degenerative lumbar diseases
Wang YT, Li BX, Wang SJ, Li CD, Sun HL
- 12890 Clinical features of elderly patients with COVID-19 in Wuhan, China
Wei S, Chen G, Ouyang XC, Hong YC, Pan YH

Observational Study

- 12899 Do inflammatory bowel disease patient preferences from treatment outcomes differ by ethnicity and gender? A cross-sectional observational study
Nafiali T, Richter V, Mari A, Khoury T, Shirin H, Broide E

- 12909** Lipoprotein (a) variability is associated with mean follow-up C-reactive protein in patients with coronary artery disease following percutaneous coronary intervention
Zhang SS, Hu WY, Li YJ, Yu J, Sang S, Alsalman ZM, Xie DQ
- 12920** Efficacy evaluation of neuroendoscopy *vs* burr hole drainage in the treatment of chronic subdural hematoma: An observational study
Wang XJ, Yin YH, Wang ZF, Zhang Y, Sun C, Cui ZM
- 12928** Optimal approach for total endoscopic discectomy and its effect on lumbar and leg function in patients with disc herniation
Zhang ZH, Du Q, Wu FJ, Liao WB
- 12936** Value of inflammatory mediator profiles and procalcitonin in predicting postoperative infection in patients with hypertensive cerebral hemorrhage
Yin RH, Zhang B, Zhou XH, Cao LP, Li M

SYSTEMATIC REVIEWS

- 12946** *De novo* non-alcoholic fatty liver disease after pancreatectomy: A systematic review
Shah P, Patel V, Ashkar M

META-ANALYSIS

- 12959** Comparative effectiveness of first-line therapies for eradication of antibiotic-resistant *Helicobacter pylori* strains: A network meta-analysis
Zou SP, Cheng Q, Feng CY, Xu C, Sun MH

CASE REPORT

- 12971** Malignant atrophic papulosis: Two case reports
Li ZG, Zhou JM, Li L, Wang XD
- 12980** Endoscopic treatment of urothelial encrusted pyelo-ureteritis disease: A case series
Liu YB, Xiao B, Hu WG, Zhang G, Fu M, Li JX
- 12990** Nearly-complete labial adhesions diagnosed with repetitive cystitis in postmenopausal women: A case report
Kwon H
- 12996** Congenital dysfibrinogenemia misdiagnosed and inappropriately treated as acute fatty liver in pregnancy: A case report and review of literature
Jia Y, Zhang XW, Wu YS, Wang QY, Yang SL
- 13006** Lung squamous cell carcinoma presenting as rare clustered cystic lesions: A case report and review of literature
Shen YY, Jiang J, Zhao J, Song J
- 13015** Management of ductal spasm in a neonate with pulmonary atresia and an intact ventricular septum during cardiac catheterization: A case report
Zhang X, Zhang N, Song HC, Ren YY

- 13022** Symptomatic accessory soleus muscle: A cause for exertional compartment syndrome in a young soldier: A case report
Woo I, Park CH, Yan H, Park JJ
- 13028** Multiple myeloma presenting with amyloid arthropathy as the first manifestation: Two case reports
He C, Ge XP, Zhang XH, Chen P, Li BZ
- 13038** Kawasaki disease without changes in inflammatory biomarkers: A case report
Yamashita K, Kanazawa T, Abe Y, Naruto T, Mori M
- 13044** Atypical Whipple's disease with special endoscopic manifestations: A case report
Chen S, Zhou YC, Si S, Liu HY, Zhang QR, Yin TF, Xie CX, Yao SK, Du SY
- 13052** Acute limb ischemia after minimally invasive cardiac surgery using the ProGlide: A case series
Lee J, Huh U, Song S, Lee CW
- 13058** Genetic changes in refractory relapsed acute myeloid leukemia with *NPM1* mutation: A case report
Wang SL
- 13064** Successful surgical treatment of polybacterial gas gangrene confirmed by metagenomic next-generation sequencing detection: A case report
Lu HY, Gao YB, Qiu XW, Wang Q, Liu CM, Huang XW, Chen HY, Zeng K, Li CX
- 13074** Pulmonary sarcoidosis: A novel sequelae of drug reaction with eosinophilia and systemic symptoms: A case report
Hu YQ, Lv CY, Cui A
- 13081** Hammered silver appearance of the corneal endothelium in Fuchs uveitis syndrome: A case report
Cheng YY, Wang CY, Zheng YF, Ren MY
- 13088** Tracheostomy and venovenous extracorporeal membrane oxygenation for difficult airway patient with carinal melanoma: A case report and literature review
Liu IL, Chou AH, Chiu CH, Cheng YT, Lin HT
- 13099** Surgery combined with antibiotics for thoracic vertebral *Escherichia coli* infection after acupuncture: A case report
Mo YF, Mu ZS, Zhou K, Pan D, Zhan HT, Tang YH
- 13108** Multidisciplinary treatment of a patient with severe immune checkpoint inhibitor-induced colitis: A case report
Lu L, Sha L, Feng Y, Yan L
- 13115** Systemic combined with intravitreal methotrexate for relentless placoid chorioretinitis: A case report
Luo L, Chen WB, Zhao MW, Miao H
- 13122** Response to roxadustat in a patient undergoing long-term dialysis and allergic to erythropoiesis-stimulating agents: A case report
Xu C, Luo DG, Liu ZY, Yang D, Wang DD, Xu YZ, Yang J, Fu B, Qi AR

- 13129** Liver collision tumor of primary hepatocellular carcinoma and neuroendocrine carcinoma: A rare case report

Jeng KS, Huang CC, Chung CS, Chang CF

- 13138** Unexpected delayed reversal of rocuronium-induced neuromuscular blockade by sugammadex: A case report and review of literature

Wang HC, Lu CW, Lin TY, Chang YY

LETTER TO THE EDITOR

- 13146** Immunoglobulin G4 associated autoimmune cholangitis and pancreatitis and nivolumab

Joob B, Wiwanitkit V

ABOUT COVER

Editorial Board Member of *World Journal of Clinical Cases*, Lovenish Bains, FACS, FICS, FRCS, MBBS, MS, Associate Professor, Surgeon, Teacher, Department of Surgery, Maulana Azad Medical College, New Delhi 110002, India. lovenishbains@gmail.com

AIMS AND SCOPE

The primary aim of *World Journal of Clinical Cases* (WJCC, *World J Clin Cases*) is to provide scholars and readers from various fields of clinical medicine with a platform to publish high-quality clinical research articles and communicate their research findings online.

WJCC mainly publishes articles reporting research results and findings obtained in the field of clinical medicine and covering a wide range of topics, including case control studies, retrospective cohort studies, retrospective studies, clinical trials studies, observational studies, prospective studies, randomized controlled trials, randomized clinical trials, systematic reviews, meta-analysis, and case reports.

INDEXING/ABSTRACTING

The WJCC is now abstracted and indexed in Science Citation Index Expanded (SCIE, also known as SciSearch®), Journal Citation Reports/Science Edition, Current Contents®/Clinical Medicine, PubMed, PubMed Central, Scopus, Reference Citation Analysis, China National Knowledge Infrastructure, China Science and Technology Journal Database, and Superstar Journals Database. The 2022 Edition of Journal Citation Reports® cites the 2021 impact factor (IF) for WJCC as 1.534; IF without journal self cites: 1.491; 5-year IF: 1.599; Journal Citation Indicator: 0.28; Ranking: 135 among 172 journals in medicine, general and internal; and Quartile category: Q4. The WJCC's CiteScore for 2021 is 1.2 and Scopus CiteScore rank 2021: General Medicine is 443/826.

RESPONSIBLE EDITORS FOR THIS ISSUE

Production Editor: Hua-Ge Yin; Production Department Director: Xiang Li; Editorial Office Director: Jin-Lei Wang.

NAME OF JOURNAL

World Journal of Clinical Cases

ISSN

ISSN 2307-8960 (online)

LAUNCH DATE

April 16, 2013

FREQUENCY

Thrice Monthly

EDITORS-IN-CHIEF

Bao-Gan Peng, Jerzy Tadeusz Chudek, George Kontogeorgos, Maurizio Serati, Ja Hyeon Ku

EDITORIAL BOARD MEMBERS

<https://www.wjnet.com/2307-8960/editorialboard.htm>

PUBLICATION DATE

December 16, 2022

COPYRIGHT

© 2022 Baishideng Publishing Group Inc

INSTRUCTIONS TO AUTHORS

<https://www.wjnet.com/bpg/gerinfo/204>

GUIDELINES FOR ETHICS DOCUMENTS

<https://www.wjnet.com/bpg/GerInfo/287>

GUIDELINES FOR NON-NATIVE SPEAKERS OF ENGLISH

<https://www.wjnet.com/bpg/gerinfo/240>

PUBLICATION ETHICS

<https://www.wjnet.com/bpg/GerInfo/288>

PUBLICATION MISCONDUCT

<https://www.wjnet.com/bpg/gerinfo/208>

ARTICLE PROCESSING CHARGE

<https://www.wjnet.com/bpg/gerinfo/242>

STEPS FOR SUBMITTING MANUSCRIPTS

<https://www.wjnet.com/bpg/GerInfo/239>

ONLINE SUBMISSION

<https://www.f6publishing.com>



Liver collision tumor of primary hepatocellular carcinoma and neuroendocrine carcinoma: A rare case report

Kuo-Shyang Jeng, Chun-Chieh Huang, Chen-Shuan Chung, Chiung-Fang Chang

Specialty type: Gastroenterology and hepatology

Provenance and peer review: Unsolicited article; Externally peer reviewed.

Peer-review model: Single blind

Peer-review report's scientific quality classification

Grade A (Excellent): 0
Grade B (Very good): B
Grade C (Good): 0
Grade D (Fair): D
Grade E (Poor): 0

P-Reviewer: Limaïem F, Tunisia; Yan YL, China

Received: October 20, 2022

Peer-review started: October 20, 2022

First decision: October 28, 2022

Revised: November 8, 2022

Accepted: November 22, 2022

Article in press: November 22, 2022

Published online: December 16, 2022



Kuo-Shyang Jeng, Department of General Surgery, Far Eastern Memorial Hospital, New Taipei 220, Taiwan

Chun-Chieh Huang, Department of Radiology, Far Eastern Memorial Hospital, New Taipei 220, Taiwan

Chen-Shuan Chung, Department of Internal Medicine, Far Eastern Memorial Hospital, New Taipei 220, Taiwan

Chiung-Fang Chang, Department of Medical Research, Far Eastern Memorial Hospital, New Taipei 220, Taiwan

Corresponding author: Kuo-Shyang Jeng, MD, Professor, Department of General Surgery, Far Eastern Memorial Hospital, No. 21 Sec. 2, Nanya S. Road, Banciao District, New Taipei 220, Taiwan. kevin.ksjeng@gmail.com

Abstract

BACKGROUND

Hepatocellular carcinoma (HCC) can occasionally develop with other non-HCC cell types, either in a combined type or collision type. A collision tumor is defined as two histopathologically distinct tumors of the same organ lacking a clear transition zone. Hepatic collision tumors are rare. Among them, "hepatocellular carcinoma-hepatic neuroendocrine carcinoma" (HCC-NEC) collision tumors are especially rare and information about them is rarely published.

CASE SUMMARY

A 48-year-old man with typical findings of HCC underwent consecutive therapies, including radiofrequency ablation and embolization prior to resection. Diagnosis of the HCC-NEC collision tumor in the right liver and another HCC in the left liver was established following surgical resection. The patient displayed NEC metastasis following resection and succumbed to septicemia after 2 more rounds of chemotherapy. To our knowledge, this is the 25th reported case of mixed HCC-NEC tumor. The rarity of HCC-NEC collision tumors and the absence of diagnostic criteria make it difficult to differentiate this condition from simple liver tumors, especially in patients with chronic liver disease.

CONCLUSION

Our case highlights the difficulty in accurately diagnosing HCC-NEC in the absence of histological evidence. The prognosis is poor for this condition,

although ultrasound-guided liver biopsy can be helpful to establish a prompt diagnosis. Further accumulation of such cases could help establish an accurate diagnosis earlier. Early discovery of NEC may allow for better treatment strategies and better prognoses.

Key Words: Collision tumor; Combined tumor; Hepatocellular carcinoma; Neuroendocrine tumor; Case report

©The Author(s) 2022. Published by Baishideng Publishing Group Inc. All rights reserved.

Core Tip: Collision tumors of the liver are not common. Coexisting hepatocellular carcinomas (HCCs) and neuroendocrine carcinomas (NECs) with collision tumor patterns are extremely uncommon. Herein, we report a case of an HCC-NEC collision tumor of the liver. Definite diagnosis is usually difficult until pathological confirmation. The prognosis is poor. Early discovery of NEC may allow better treatment strategies.

Citation: Jeng KS, Huang CC, Chung CS, Chang CF. Liver collision tumor of primary hepatocellular carcinoma and neuroendocrine carcinoma: A rare case report. *World J Clin Cases* 2022; 10(35): 13129-13137

URL: <https://www.wjgnet.com/2307-8960/full/v10/i35/13129.htm>

DOI: <https://dx.doi.org/10.12998/wjcc.v10.i35.13129>

INTRODUCTION

Hepatocellular carcinoma (HCC) can occasionally develop with other non-HCC cell types in a mosaic arrangement, either in the combined type or in the collision type. A collision tumor is defined as two histopathologically distinct tumors of the same organ that lack a clear transition zone[1-3]. However, in a combined tumor, both types of tumors intermingle with each other without a clear separation. Hepatic collision tumors are extremely rare[1-4]. Most hepatic collision tumors are composed of HCC and cholangiocarcinoma. HCC and neuroendocrine carcinoma (NEC) present in the liver without a clear transition zone (the so-called HCC-NEC collision tumor) are extremely rare[1-5]. The following case report details our experience treating a patient with an HCC-NEC collision tumor, along with a review of the available literature.

CASE PRESENTATION

Chief complaints

Liver tumors were detected incidentally during a regular liver ultrasound examination in a 48-year-old male patient without symptoms or complaints.

History of present illness

Cirrhosis of the liver as well as two hepatic tumors (3 cm and 2.5 cm, both located in Couinaud's hepatic segment 8) were discovered incidentally in March 2016 during a regular ultrasound examination.

History of past illness

A 48-year-old male patient was on entecavir (baraclude) antiviral therapy for a number of years for hepatitis B viral infection.

Personal and family history

There was no family history of liver disease.

Physical examination

The patient had no symptoms of jaundice, abdominal discomfort, or weight loss and had not received any treatment for the issue prior to admission. The abdomen was soft without any palpable masses or ascites. Sclera was not icteric.

Laboratory examinations

Laboratory results revealed serum alpha fetoprotein (AFP) elevated to 29.91 ng/mL (normal < 7.0 ng/mL). HCC was suspected without tissue evidence.

Imaging examinations

Multiple hepatic nodules at the right hepatic lobe and left hepatic tip were recognized. The representative larger well-defined lesion, 2.5 cm in size, has obvious hypo-intensity on the fat-suppressed T1WI (Figure 1A), hyperintensity on the fat-suppressed T2WI (Figure 1B), significant diffusion restriction with hyperintensity on the diffusion-weighted imaging (Figure 1C) and dark signal on the ADC (apparent diffusion coefficient) map at the corresponding site (Figure 1D), and early hyperenhancement & rapid washout (Figure 1E-H).

FINAL DIAGNOSIS

Liver collision tumor of primary HCC and NEC.

TREATMENT

Ultrasound-guided percutaneous radiofrequency ablation (RFA) was performed on the two lesions in June 2016. One month later, a follow-up liver triphase computed tomography (CT) scan revealed a recurrent hepatic tumor in the left liver (segment 2). Serum AFP was 22.53 ng/mL, and left HCC was suspected.

The patient was prepared for liver transplantation, but no donor was available, and consecutive treatments were therefore given. Transcatheter hepatic arterial chemoembolization with 25 mg doxorubicin loaded in a Hepasphere microsphere was performed once in September 2016, but a follow-up triphase CT scan showed recurrence of liver tumors in segments 2 and 7 in December 2018.

Ultrasound-guided RFA followed by percutaneous ethanol tumor injection (8 mL) at the segment 7 lesion was performed without complications in January 2019. Two weeks later, diagnostic celiac arteriography revealed a large tumor (> 5 cm) located in segment 7 and a smaller tumor located in segment 2. Surgical resection was recommended after consultation with surgeons. The patient then underwent surgical intervention, including cholecystectomy, right hepatectomy (for a large tumor of segment 7), and wedge resection of the segment 2 lesion *via* intraoperative ultrasound guidance. The perioperative course was uneventful, and the patient was discharged on postoperative Day 14.

Pathological findings revealed a right lobe tumor 5.7 cm × 5 cm × 4.5 cm in size with free resection margins (Figure 2A). The right hepatic lesion was determined to be an HCC-NEC collision tumor composed of a poorly differentiated large NEC with a small amount of HCC tissue after pathological examination (Figure 2B).

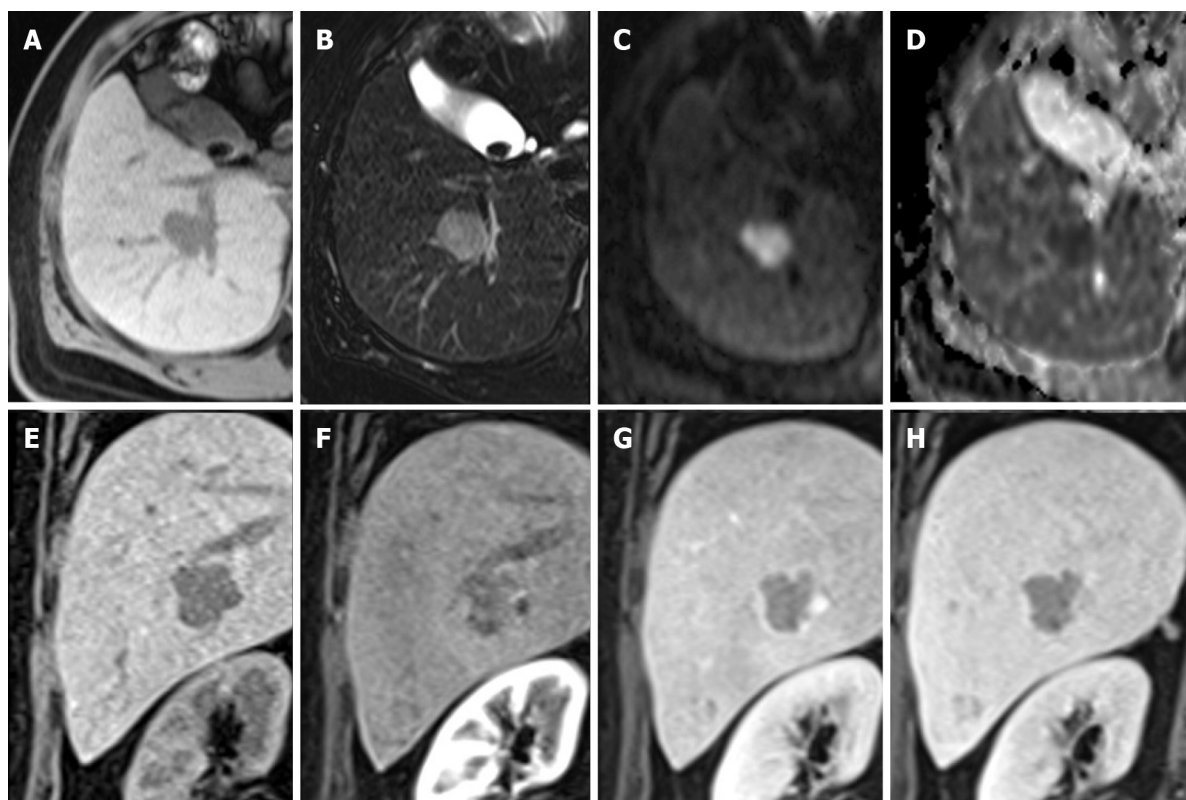
Microscopy of the collision tumor revealed organoid nesting NEC tissue with trabecular, frequent, rosette-like structures suggesting atypical nuclear molding, enlarged nuclei, and “salt and pepper” chromatin (Figure 2B). The overall mitotic count was high (> 20/10 HPF), and tumor necrosis and lymphovascular/perineural invasion were observed.

Immunohistochemical analysis revealed the presence of synaptophysin (Figure 2C) and chromogranin A (Figure 2D) in the primary NEC tumor region. CK7, Hepa-1, arginase-1, and CD34 were negative. The smaller HCC region of the collision tumor demonstrated sinusoidal capillarization highlighted by CD34 and focal immunoreactivity for CK7 negative for Hepa-1, arginase-1, synaptophysin (Figure 2D), and chromogranin A (Figure 2E). pTNM staging of NEC tissue was categorized as pT3 (according to the American Joint Committee on Cancer, AJCC 8th Edition) given the presence of vascular and perineural infiltration.

Regarding the segment 2 (of the left lobe) lesion 1.6 cm × 1 cm × 0.7 cm in size (Figure 2F), pathological findings revealed poorly differentiated HCC. No coexisting NEC tissue was found. The resection margin was free.

Modified hepatic activity index (HAI) grading with necroinflammatory scoring of liver pathologies revealed hepatitis of the periportal and periseptal interface (piecemeal necrosis) with mild to moderate portal inflammation. The total modified HAI score was 4/18, and modified Ishak fibrosis staging noted marked bridging with occasional nodules, suggesting incomplete cirrhosis.

During postoperative follow-up, CT and positron emission tomography-CT (PET-CT) scans performed in March 2019 showed metastatic lymphadenopathy of the peripancreatic and para-aortic regions. Endoscopic ultrasound -guided fine needle aspiration of the lymph nodes was performed, and pathological findings revealed metastatic NEC. Two successive rounds of chemotherapy for NEC were given on April 8, 2019 and May 9, 2019. However, a CT scan performed in July 2019 showed the progression of abdominal and thoracic lymphadenopathy.



DOI: 10.12998/wjcc.v10.i35.13129 Copyright ©The Author(s) 2022.

Figure 1 Multiple hepatic nodules at the right hepatic lobe and left hepatic tip are recognized. A: The representative larger well-defined lesion, 2.5 cm in size, has obvious hypointensity on the fat-suppressed T1WI; B: Hyperintensity on the fat-suppressed T2WI; C: Significant diffusion restriction with hyperintensity on the diffusion-weighted imaging; D: Dark signal on the apparent diffusion coefficient map at the corresponding site; E-H: Early hyperenhancement & rapid washout.

OUTCOME AND FOLLOW-UP

The patient survived until November 2019, ultimately succumbing to septicaemia and multiple organ failure.

DISCUSSION

Both collision and combined tumors are uncommon in the liver[1-5]. A collision tumor differs from a combined tumor in that collision tumors involve two tumor types that exist contiguously and without clear delineation[1-3]. Among all primary hepatic malignancies, the incidence of combined tumors is estimated to range from 2.0% to 3.6%[4], while combined tumors are postulated to arise from the same stem cells differentiating into distinct cancers, with the most common combined tumor being hepatocholangiocarcinoma (HCC and cholangiocarcinoma)[1,4]. The incidence of collision-type tumors is even rarer, ranging from 0.1% to 1% among primary liver malignancies[1]. Among primary liver collision tumors, HCC-cholangiocarcinoma, HCC-sarcoma, and HCC-NEC have been reported[1].

In our patient, HCC and NEC coexisted without clear delineation grossly (Figure 2) but were distinguishable by both microscopic features while lacking a focal transition (Figure 2). Moreover, there was no immunoreactivity for the neuroendocrine marker CD56 in the HCC zone. We therefore diagnosed the tumor as HCC-NEC.

Primary NEC in the liver is rare. Usually, NEC presents as metastasis to the liver from other organs. NECs are well known to arise in the pancreas and other extrahepatic organs. However, in this case, neither pre- nor postoperative imaging, including PET-CT, could detect tumors in the pancreas or elsewhere. We therefore regard liver NEC as the primary tumor.

Hepatic HCC-NEC is extremely rare. Only 24 of these tumors (2 female/22 male, ages 43 to 84 (median age 68)) have been reported, including 9 collision tumors, 14 combined tumors, and 1 combined plus collision tumor (Table 1)[1-20].

The coexistence of an HCC-NEC collision tumor (right liver) and a pure HCC tumor (left liver) in one patient is especially rare. The contributing factor of HCC could be attributed to hepatitis B and cirrhosis. However, these two coexisting tumors with different characteristics are difficult to ascribe.

Table 1 Case reports describing concurrent hepatocellular carcinoma and neuroendocrine carcinomas

	Age	Symptoms	Virus	AFP	Diagnosis ²	Type	Therapy	Time ¹ (Mon)	Status	Ref.
1	43	Abdominal swelling	HBV	NA	Autopsy ²	Combined	Adriamycin, 5-FU	26	Death	Barsky <i>et al</i> [8]
2	69	Abdominal pain	HBV	NA	FNA ²	Combined	NA	NA	NA	Artopoulos <i>et al</i> [10]
3	63	Abdominal pain, jaundice	NA	NA	Resection	Combined	NA	1	Death(bleeding spesis)	Vora <i>et al</i> [11]
4	72	NA	HCV	13.6	Resection, LND	Collision	NA	NA	NA	Ishida <i>et al</i> [2]
5	71	NA	HCV	20.7, 479.1	Resection	Combined (intermingled)	NA	5	NA	Yamaguchi <i>et al</i> [6]
6	50	NA	HCV	1191	Core biopsy, then Resection	Collision	TACE, cisplatin, doxorubicin, thalidomide and Avastin	16	alive	Garcia <i>et al</i> [1]
7	65	Epigastric pain	HBV	Normal	Resection, LND	Combined	NA	12	Death	Yang <i>et al</i> [7]
8	68	NA	HBV	1191	Resection	Collision	Cisplatin, etoposide	28	Alive	Tazi <i>et al</i> [4]
9	76	Echo-detected	HCV	281.4, 14.9, 2632 (after TACE)	TACE, resection	Combined NE with sarcomatous change	TACE, epirubicin lipiodol	17	Death	Nakanishi <i>et al</i> [5]
10	51	Abdominal pain	HCV	NA	Biopsy	Combined	NA	1	Death	Hammedi <i>et al</i> [12]
11	56	Abdominal distension	NA	70	Resection	Combined	NA	6	Alive	Aboelenen <i>et al</i> [13]
12	72	No symptoms	HCV	24.8	Resection	Collision	Cisplatin, etoposide	2	Death	Nishino <i>et al</i> [14]
13	72	No symptoms	HCV	3.8	Resection	Collision	Cisplatin, etoposide	10	Alive	Choi <i>et al</i> [15]
14	76	NA	NA	49.2	Resection	Collision	Cisplatin	NA	Alive	Baker <i>et al</i> [9]
15	71	NA	HCV	4791	Resection	Combined	NA	8.6	Death	Nomura <i>et al</i> [16]
16	71	NA	HCV	10.3	Resection	Collision	NA	2.6	Death	Nomura <i>et al</i> [16]
17	58	NA	HBV	176.4	RFA, Resection	Combined	NA	19.7	Alive	Nomura <i>et al</i> [16]
18	50	NA	HBV	473.7	Resection	Combined	NA	19.5	Alive	Nomura <i>et al</i> [16]
19	63	NA	HCV	2276	Resection	Combined	NA	24	Alive	Nomura <i>et al</i> [16]
20	65	Abdominal discomfort	HCV	400.06	Resection	Collision	NA	1.3	Death	Liu <i>et al</i> [17]
21	70	Solid mass	HCV	3.7	TAE and TPE, Resection	Collision and combined	NA	3	Death	Okumura <i>et al</i> [18]
22	56	Incidental	NA	2.8	Liver transplantation (Resection specimen)	Collision	NA	10	Alive	Yilmaz <i>et al</i> [3]
23	79	Abnormal liver function	NA	3231.8	Resection	Combined	NA	4	Death	Ikeda <i>et al</i> [19]
24	84	Higher AFP values	NA	399	Laparoscopic resection	Combined	NA	9	Alive	Nakano <i>et al</i> [20]
25	48	Incidental	HBV	29.91	RFA, TACE, RFA,	Collision	Chemotherapy	40	Death (sepsis)	Our study

¹Time in months (since diagnosis).

²Diagnosis: All are hepatocellular carcinoma (HCC) coexisting with neuroendocrine tumors except the two (²): HCC with carcinoid. NA: None, or not included or not available; HBV: Hepatitis B virus; HCV: Hepatitis C virus; AFP: Alpha-fetoprotein (ng/mL); FNA: Fine needle aspiration; 5-FU: 5-fluorouracil; TACE: Transarterial chemoembolization; TAE: Transarterial embolization; TPE: transportal vein embolization.

Making an accurate preoperative diagnosis for such an uncommon disease without histological evidence is difficult, and this patient was diagnosed using surgically obtained tissue samples. Although the serum marker AFP is valuable in ruling out HCC, it cannot rule out HCC-NEC comorbidity. Of the remaining 24 case reports described in the literature, none were able to establish an accurate diagnosis using only preoperative imaging (Table 1).

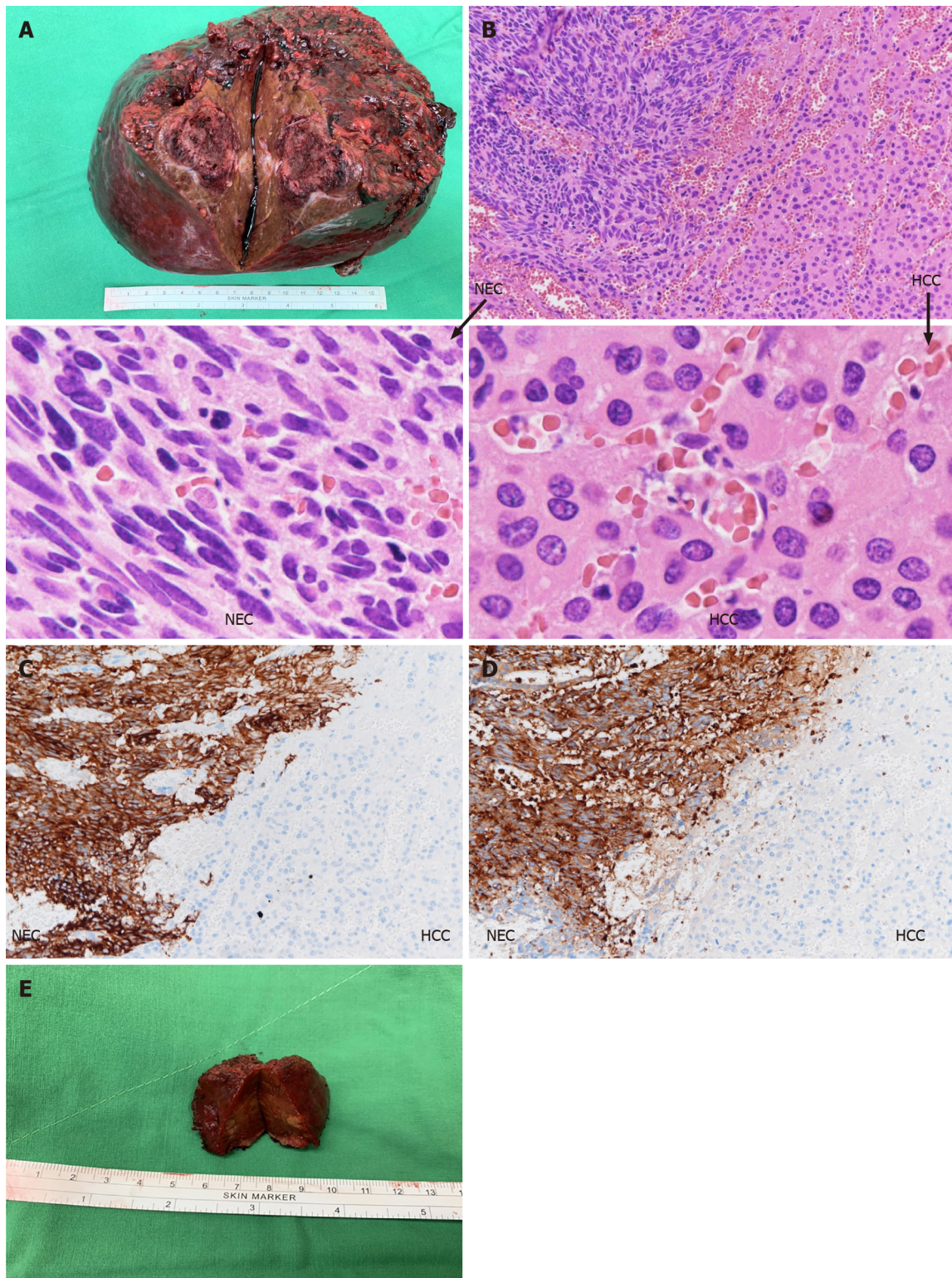
The prognosis for HCC-NEC is poor, although this is based on a small number of reported cases[4]. The majority of HCC-NEC cases described in the literature resulted in mortality (Table 1). Among these 24 reported cases, 20 underwent resection[1-20], and 1 received a hepatectomy with a liver transplant [3]. Most cases are either fatal or result in recurrence[8,10,12]. Long-term survival only occurred in the patient undergoing liver transplantation and in two receiving partial hepatectomy (Table 1), suggesting that liver transplantation is effective for HCC-NEC.

HCCs with NEC components usually present aggressive behavior and dismal prognosis[15,17]. Although both primary NEC and HCC are malignant, aggressive activity is driven by primary hepatic NEC[6,10,17]. The poor prognosis could be attributed to the coexistence of primary NEC of the liver rather than HCC. Yamaguchi *et al*[6] emphasized elevated expression of p53 and a higher Ki-67 proliferation index in the NEC zone than in the HCC zone, suggesting that NEC exhibits strong malignant behavior. Metastatic tumors usually only arise from the NEC portion of tumor. In our patient, NEC metastasis and growth proceeded soon after hepatic resection despite chemotherapy.

The cellular origins of NEC in NEC-HCC remain elusive[7]. Some researchers have proposed that NEC originates either from the ectopic pancreas[5] or from neuroendocrine cells in the intrahepatic bile duct epithelium[21]. In the patient under discussion, preoperative imaging found no ectopic pancreatic tissue proximal to the tumor. Furthermore, the tumor was negative for CK7, usually expressed by the bile duct epithelium. However, based on the literature, two further hypotheses can be put forward to explain the origin of the tumor in this patient. First, hepatic stem cells may have undergone a malignant transformation, as in other case studies[8,17,21]. Hepatic progenitor cells present in the epithelial lining of the intrahepatic bile ducts can be the origin of NECs. NECs can manifest in the liver as isolated carcinoids or high-grade small-cell carcinomas in noncirrhotic livers[4]. Nevertheless, the majority of primary hepatic NEC patients do not survive past 1 year, regardless of tumor resection[2,7]. With HCC, superior 1-year and 5-year survival outcomes are better following hepatectomy. Furthermore, Baker *et al* [9] recently published a case study where both components of a mixed HCC/NEC tumor shared a mutation in the CTNNB1 gene (S33F located at exon 3), suggesting that they might have derived from the same cellular origin. The second hypothesis states that pluripotent stem cells become precursors to HCC, neuroendocrine malignancy, and other tumors with polyphenotypic expression[2,6]. This hypothesis is supported by the existence of HCCs possessing neuroendocrine features[21]. Zhao *et al*[21] found neuroendocrine differentiation in 60% of HCC patients. Moreover, there is a discrepancy between this high rate and the rarity of primary NECs in the liver. If an underdeveloped HCC clone experiences neuroendocrine differentiation, the result could be an NEC that completely replaces the HCC[2,7].

CONCLUSION

This case report allowed us to review an HCC-NEC collision tumor. To our knowledge, this is the 25th reported case of HCC-NEC. One HCC-NEC collision tumor and another HCC coexisting in one patient (such as our patient) are especially rare. We have detailed a case report involving an HCC-NEC type collision tumor in a male patient who developed NEC metastasis despite repeated interventions. The rarity of HCC-NEC collision tumors and the absence of diagnostic criteria make it difficult to differentiate this condition from simple liver tumors, especially in patients with chronic liver disease. Our patient highlights the difficulty in accurately diagnosing HCC-NEC in the absence of histological evidence. The prognosis is poor for this condition, although ultrasound-guided liver biopsy could be helpful in establishing a prompt diagnosis. The collection of data from more combined or collision HCC-NEC patients in the future may improve the diagnostic details and early treatment. Early discovery of NEC may allow for better treatment strategies and better prognoses.



DOI: 10.12998/wjcc.v10.i35.13129 Copyright ©The Author(s) 2022.

Figure 2 Hepatocellular carcinoma and neuroendocrine carcinoma tumors. A: Tumor of the right lobe of the liver, 5.7 cm × 5 cm × 4.5 cm, a collision type "hepatocellular carcinoma-hepatic neuroendocrine carcinoma" (HCC-NEC). HCC and NECs coexisted without clear delineation by gross features; B: HE 200X left: NEC, Right: HCC; collision type tumor (right liver tumor). HCC and NEC coexisted and were distinguishable by microscopic features without a focal transition. In addition, HE 400X left: NEC, Right: HCC; C: Synaptophysin 200X LEFT: NEC, right: HCC (collision type, right liver). Synaptophysin positivity in NEC; D: Chromogranin A 200X left: NEC, right: HCC (collision type, right liver). Chromogranin A is positive in NEC; E: A pure HCC (1.6 cm × 1 cm × 0.7 cm) in the resected segment 2 liver.

ACKNOWLEDGEMENTS

We would like to thank for the support of the Core Laboratory and the human Biobank of Far Eastern Memorial Hospital.

FOOTNOTES

Author contributions: Jeng KS and Huang CC contributed equally to this work; Jeng KS designed the study; Jeng KS, Huang CC, Chung CS conducted the study; Jeng KS, Huang CC, and Chang CF wrote and edited the manuscript; and all authors read and approved the final manuscript.

Supported by the Far Eastern Memorial Hospital, No. FEMH-2021-C-002, and No. FEMH-2022-C-122; the Ministry of Science and Technology, Taiwan, No. MOST 109-2314-B-418-007, and No. MOST 110-2314-B-418-009; and the National Health Research Institutes, No. NHRI-109BCCO-MF-2020-01, and No. NHRI-111BCCO-EB-222218 for FEMH Human Biobank.

Informed consent statement: Ethical approval for this case report was obtained from Research Ethics Review Committee, Far Eastern Memorial Hospital (APPROVAL Number: 109054-C, 109012-E). Informed consent for patient information was waived because 109054-C only included a single patient, and the 109012-E sample was from the biobank.

Conflict-of-interest statement: All the authors have no conflict to declare.

CARE Checklist (2016) statement: The authors have read the CARE Checklist (2016), and the manuscript was prepared and revised according to the CARE Checklist (2016).

Open-Access: This article is an open-access article that was selected by an in-house editor and fully peer-reviewed by external reviewers. It is distributed in accordance with the Creative Commons Attribution NonCommercial (CC BY-NC 4.0) license, which permits others to distribute, remix, adapt, build upon this work non-commercially, and license their derivative works on different terms, provided the original work is properly cited and the use is non-commercial. See: <https://creativecommons.org/licenses/by-nc/4.0/>

Country/Territory of origin: Taiwan

ORCID number: Kuo-Shyang Jeng 0000-0002-1776-4168; Chun-Chieh Huang 0000-0002-4803-1477; Chen-Shuan Chung 0000-0001-9224-4958; Chiung-Fang Chang 0000-0002-8741-5174.

S-Editor: Liu JH

L-Editor: A

P-Editor: Liu JH

REFERENCES

- 1 **Garcia MT**, Bejarano PA, Yssa M, Buitrago E, Livingstone A. Tumor of the liver (hepatocellular and high grade neuroendocrine carcinoma): a case report and review of the literature. *Virchows Arch* 2006; **449**: 376-381 [PMID: 16896889 DOI: 10.1007/s00428-006-0251-0]
- 2 **Ishida M**, Seki K, Tatsuzawa A, Katayama K, Hirose K, Azuma T, Imamura Y, Abraham A, Yamaguchi A. Primary hepatic neuroendocrine carcinoma coexisting with hepatocellular carcinoma in hepatitis C liver cirrhosis: report of a case. *Surg Today* 2003; **33**: 214-218 [PMID: 12658390 DOI: 10.1007/s005950300048]
- 3 **Yilmaz DB**, Bayramoğlu Z, Ünay G, Ayık E, Başsorgun Cİ, Elpek GÖ. Incidental Collision Tumor of Hepatocellular Carcinoma and Neuroendocrine Carcinoma. *J Clin Transl Hepatol* 2018; **6**: 339-344 [PMID: 30271748 DOI: 10.14218/JCTH.2017.00076]
- 4 **Tazi EM**, Essadi I, M'rabti H, Errihani H. Hepatocellular Carcinoma and High Grade Neuroendocrine Carcinoma: A Case Report and Review of the Literature. *World J Oncol* 2011; **2**: 37-40 [PMID: 29147223 DOI: 10.4021/wjon276e]
- 5 **Nakanishi C**, Sato K, Ito Y, Abe T, Akada T, Muto R, Sakashita K, Konno T, Kato H, Satomi S. Combined hepatocellular carcinoma and neuroendocrine carcinoma with sarcomatous change of the liver after transarterial chemoembolization. *Hepatol Res* 2012; **42**: 1141-1145 [PMID: 23094854 DOI: 10.1111/j.1872-034X.2012.01017.x]
- 6 **Yamaguchi R**, Nakashima O, Ogata T, Hanada K, Kumabe T, Kojiro M. Hepatocellular carcinoma with an unusual neuroendocrine component. *Pathol Int* 2004; **54**: 861-865 [PMID: 15533230 DOI: 10.1111/j.1440-1827.2004.01770.x]
- 7 **Yang CS**, Wen MC, Jan YJ, Wang J, Wu CC. Combined primary neuroendocrine carcinoma and hepatocellular carcinoma of the liver. *J Chin Med Assoc* 2009; **72**: 430-433 [PMID: 19686999 DOI: 10.1016/S1726-4901(09)70400-9]
- 8 **Barsky SH**, Linnoila I, Triche TJ, Costa J. Hepatocellular carcinoma with carcinoid features. *Hum Pathol* 1984; **15**: 892-894 [PMID: 6147306 DOI: 10.1016/s0046-8177(84)80152-5]
- 9 **Baker E**, Jacobs C, Martinie J, Iannitti DA, Vrochides D, Swan RZ. Mixed Hepatocellular Carcinoma, Neuroendocrine

- Carcinoma of the Liver. *Am Surg* 2016; **82**: 1121-1125 [PMID: [28206942](#)]
- 10 **Artopoulos JG**, Destuni C. Primary mixed hepatocellular carcinoma with carcinoid characteristics. A case report. *Hepatogastroenterology* 1994; **41**: 442-444 [PMID: [7851852](#)]
 - 11 **Vora IM**, Amarapurkar AD, Rege JD, Mathur SK. Neuroendocrine differentiation in hepatocellular carcinoma. *Indian J Gastroenterol* 2000; **19**: 37-38 [PMID: [10659491](#)]
 - 12 **Hammedi F**, Rammah S, Trabelsi A, Bdioui A, Jomaa W, Anjorin A, Bakir D, Mokni M. Carcinome hépatocellulaire avec composante neuroendocrine: à propos d'un cas. *Journal Africain du Cancer / African Journal of Cancer* 2012; **4**: 120-123 [DOI: [10.1007/s12558-011-0175-8](#)]
 - 13 **Aboelenen A**, El-Hawary AK, Megahed N, Zalata KR, El-Salk EM, Fattah MA, Sorogy ME, Shehta A. Right hepatectomy for combined primary neuroendocrine and hepatocellular carcinoma. A case report. *Int J Surg Case Rep* 2014; **5**: 26-29 [PMID: [24394859](#) DOI: [10.1016/j.ijscr.2013.10.018](#)]
 - 14 **Nishino H**, Hatano E, Seo S, Shibuya S, Anazawa T, Iida T, Masui T, Taura K, Haga H, Uemoto S. Histological features of mixed neuroendocrine carcinoma and hepatocellular carcinoma in the liver: a case report and literature review. *Clin J Gastroenterol* 2016; **9**: 272-279 [PMID: [27384317](#) DOI: [10.1007/s12328-016-0669-0](#)]
 - 15 **Choi GH**, Ann SY, Lee SI, Kim SB, Song IH. Collision tumor of hepatocellular carcinoma and neuroendocrine carcinoma involving the liver: Case report and review of the literature. *World J Gastroenterol* 2016; **22**: 9229-9234 [PMID: [27895410](#) DOI: [10.3748/wjg.v22.i41.9229](#)]
 - 16 **Nomura Y**, Nakashima O, Akiba J, Ogasawara S, Fukutomi S, Yamaguchi R, Kusano H, Kage M, Okuda K, Yano H. Clinicopathological features of neoplasms with neuroendocrine differentiation occurring in the liver. *J Clin Pathol* 2017; **70**: 563-570 [PMID: [27881473](#) DOI: [10.1136/jclinpath-2016-203941](#)]
 - 17 **Liu YJ**, Ng KF, Huang SC, Wu RC, Chen TC. Composite hepatocellular carcinoma and small cell carcinoma with early nodal metastasis: A case report. *Medicine (Baltimore)* 2017; **96**: e7868 [PMID: [28834900](#) DOI: [10.1097/MD.00000000000007868](#)]
 - 18 **Okumura Y**, Kohashi K, Wang H, Kato M, Maehara Y, Ogawa Y, Oda Y. Combined primary hepatic neuroendocrine carcinoma and hepatocellular carcinoma with aggressive biological behavior (adverse clinical course): A case report. *Pathol Res Pract* 2017; **213**: 1322-1326 [PMID: [28647212](#) DOI: [10.1016/j.prp.2017.06.001](#)]
 - 19 **Ikeda A**, Aoki K, Terashima T, Itokawa Y, Kokuryu H. A fat containing combined neuroendocrine carcinoma and hepatocellular carcinoma in the liver: A case report. *Ann Hepatol* 2021; **22**: 100183 [PMID: [32111487](#) DOI: [10.1016/j.aohp.2020.01.006](#)]
 - 20 **Nakano A**, Hirabayashi K, Yamamuro H, Mashiko T, Masuoka Y, Yamamoto S, Ozawa S, Nakagohri T. Combined primary hepatic neuroendocrine carcinoma and hepatocellular carcinoma: case report and literature review. *World J Surg Oncol* 2021; **19**: 78 [PMID: [33726764](#) DOI: [10.1186/s12957-021-02187-5](#)]
 - 21 **Zhao M**, Laissue JA, Zimmermann A. "Neuroendocrine" differentiation in hepatocellular carcinomas (HCCs): immunohistochemical reactivity is related to distinct tumor cell types, but not to tumor grade. *Histol Histopathol* 1993; **8**: 617-626 [PMID: [8305816](#)]



Published by **Baishideng Publishing Group Inc**
7041 Koll Center Parkway, Suite 160, Pleasanton, CA 94566, USA

Telephone: +1-925-3991568

E-mail: bpgoffice@wjgnet.com

Help Desk: <https://www.f6publishing.com/helpdesk>

<https://www.wjgnet.com>

