

# World Journal of *Gastroenterology*

*World J Gastroenterol* 2023 February 28; 29(8): 1243-1394



## Contents

Weekly Volume 29 Number 8 February 28, 2023

## REVIEW

- 1243 Predictors of early and late hepatocellular carcinoma recurrence  
*Nevola R, Ruocco R, Criscuolo L, Villani A, Alfano M, Beccia D, Imbriani S, Claar E, Cozzolino D, Sasso FC, Marrone A, Adinolfi LE, Rinaldi L*
- 1261 Functional constipation in children: What physicians should know  
*Tran DL, Sintusek P*
- 1289 Early-onset colorectal cancer: A review of current knowledge  
*Saraiva MR, Rosa I, Claro I*

## MINIREVIEWS

- 1304 Hamartomatous polyps: Diagnosis, surveillance, and management  
*Gorji L, Albrecht P*

## ORIGINAL ARTICLE

## Basic Study

- 1315 Stress granules inhibit endoplasmic reticulum stress-mediated apoptosis during hypoxia-induced injury in acute liver failure  
*Li WY, Yang F, Li X, Wang LW, Wang Y*

## Observational Study

- 1330 Intestinal complications in Brazilian patients with ulcerative colitis treated with conventional therapy between 2011 and 2020  
*Martins AL, Galhardi Gasparini R, Sasaki LY, Saad-Hossne R, Ritter AMV, Barreto TB, Marcolino T, Yang Santos C*
- 1344 Establishment of a prediction model for severe acute radiation enteritis associated with cervical cancer radiotherapy  
*Ma CY, Zhao J, Gan GH, He XL, Xu XT, Qin SB, Wang LL, Li L, Zhou JY*
- 1359 Better performance of PIVKA-II for detecting hepatocellular carcinoma in patients with chronic liver disease with normal total bilirubin  
*Qian XJ, Wen ZM, Huang XM, Feng HJ, Lin SS, Liu YN, Li SC, Zhang Y, Peng WG, Yang JR, Zheng ZY, Zhang L, Zhang DW, Lu FM, Liu LJ, Pan WD*

## SYSTEMATIC REVIEWS

- 1374 Burden of bone disease in chronic pancreatitis: A systematic review and meta-analysis  
*Chhoda A, Hernandez-Woodbine MJ, Addo NAA, Nasir SA, Grimshaw A, Gunderson C, Ahmed A, Freedman SD, Sheth SG*

**ABOUT COVER**

Editorial Board Member of *World Journal of Gastroenterology*, Ragesh Babu Thandassery, MD, Assistant Professor, Doctor, Department of Medicine, Central Arkansas Veterans Healthcare System, Little Rock, AR 72205, United States. doc.ragesh@gmail.com

**AIMS AND SCOPE**

The primary aim of *World Journal of Gastroenterology* (WJG, *World J Gastroenterol*) is to provide scholars and readers from various fields of gastroenterology and hepatology with a platform to publish high-quality basic and clinical research articles and communicate their research findings online. WJG mainly publishes articles reporting research results and findings obtained in the field of gastroenterology and hepatology and covering a wide range of topics including gastroenterology, hepatology, gastrointestinal endoscopy, gastrointestinal surgery, gastrointestinal oncology, and pediatric gastroenterology.

**INDEXING/ABSTRACTING**

The WJG is now abstracted and indexed in Science Citation Index Expanded (SCIE, also known as SciSearch®), Current Contents/Clinical Medicine, Journal Citation Reports, Index Medicus, MEDLINE, PubMed, PubMed Central, Scopus, Reference Citation Analysis, China National Knowledge Infrastructure, China Science and Technology Journal Database, and Superstar Journals Database. The 2022 edition of Journal Citation Reports® cites the 2021 impact factor (IF) for WJG as 5.374; IF without journal self cites: 5.187; 5-year IF: 5.715; Journal Citation Indicator: 0.84; Ranking: 31 among 93 journals in gastroenterology and hepatology; and Quartile category: Q2. The WJG's CiteScore for 2021 is 8.1 and Scopus CiteScore rank 2021: Gastroenterology is 18/149.

**RESPONSIBLE EDITORS FOR THIS ISSUE**

Production Editor: *Yu-Xi Chen*; Production Department Director: *Xu Guo*; Editorial Office Director: *Jia-Ru Fan*.

**NAME OF JOURNAL**

*World Journal of Gastroenterology*

**ISSN**

ISSN 1007-9327 (print) ISSN 2219-2840 (online)

**LAUNCH DATE**

October 1, 1995

**FREQUENCY**

Weekly

**EDITORS-IN-CHIEF**

Andrzej S Tarnawski

**EDITORIAL BOARD MEMBERS**

<http://www.wjgnet.com/1007-9327/editorialboard.htm>

**PUBLICATION DATE**

February 28, 2023

**COPYRIGHT**

© 2023 Baishideng Publishing Group Inc

**INSTRUCTIONS TO AUTHORS**

<https://www.wjgnet.com/bpg/gerinfo/204>

**GUIDELINES FOR ETHICS DOCUMENTS**

<https://www.wjgnet.com/bpg/GerInfo/287>

**GUIDELINES FOR NON-NATIVE SPEAKERS OF ENGLISH**

<https://www.wjgnet.com/bpg/gerinfo/240>

**PUBLICATION ETHICS**

<https://www.wjgnet.com/bpg/GerInfo/288>

**PUBLICATION MISCONDUCT**

<https://www.wjgnet.com/bpg/gerinfo/208>

**ARTICLE PROCESSING CHARGE**

<https://www.wjgnet.com/bpg/gerinfo/242>

**STEPS FOR SUBMITTING MANUSCRIPTS**

<https://www.wjgnet.com/bpg/GerInfo/239>

**ONLINE SUBMISSION**

<https://www.f6publishing.com>



## Burden of bone disease in chronic pancreatitis: A systematic review and meta-analysis

Ankit Chhoda, Maria Jose Hernandez-Woodbine, Nana Afua Akkya Addo, Syed Alishan Nasir, Alyssa Grimshaw, Craig Gunderson, Awais Ahmed, Steven D. Freedman, Sunil G. Sheth

**Specialty type:** Gastroenterology and hepatology

**Provenance and peer review:**

Invited article; Externally peer reviewed.

**Peer-review model:** Single blind

**Peer-review report's scientific quality classification**

Grade A (Excellent): 0

Grade B (Very good): B, B

Grade C (Good): 0

Grade D (Fair): 0

Grade E (Poor): 0

**P-Reviewer:** Liu L, China; Salimi M, Iran

**Received:** November 12, 2022

**Peer-review started:** November 12, 2022

**First decision:** January 2, 2023

**Revised:** January 15, 2023

**Accepted:** February 15, 2023

**Article in press:** February 15, 2023

**Published online:** February 28, 2023



**Ankit Chhoda, Maria Jose Hernandez-Woodbine, Awais Ahmed, Steven D. Freedman, Sunil G. Sheth,** Department of Gastroenterology, Beth Israel Deaconess Medical Center, Boston, MA 02215, United States

**Nana Afua Akkya Addo, Syed Alishan Nasir,** Department of Medicine, Norwalk Hospital, Yale School of Medicine, Norwalk, CT 06850, United States

**Alyssa Grimshaw,** Cushing/Whitney Medical Library, Yale University, New Haven, CT 06510, United States

**Craig Gunderson,** General Internal Medicine, Yale School of Medicine, New Haven, CT 06510, United States

**Corresponding author:** Sunil G. Sheth, AGAF, FACG, FASGE, MBBS, MD, Associate Professor, Department of Gastroenterology, Beth Israel Deaconess Medical Center, 330 Brookline Avenue, Boston, MA 02215, United States. [ssheth@bidmc.harvard.edu](mailto:ssheth@bidmc.harvard.edu)

### Abstract

#### BACKGROUND

Bone disease is an under-recognized cause of morbidity in chronic pancreatitis (CP). Over the past decade, publications of original studies on bone disease in CP has warranted synthesis of the evidence to ascertain the true burden of the problem.

#### AIM

To quantify the prevalence of osteopenia, osteoporosis, and fragility fractures in CP patients and investigate the associated clinical features and outcomes.

#### METHODS

A systematic search identified studies investigating bone disease in CP patients from Cochrane Library, Embase, Google Scholar, Ovid Medline, PubMed, Scopus, and Web of Science, from inception until October 2022. The outcomes included prevalence of osteopenia, osteoporosis, and fragility fractures, which were meta-analyzed using a random-effects model and underwent metaregression to delineate association with baseline clinical features.

#### RESULTS

Twenty-one studies were included for systematic review and 18 studies were

included for meta-analysis. The pooled prevalence of osteopenia and osteoporosis in CP patients was 41.2% (95%CI: 35.2%-47.3%) and 20.9% (95%CI: 14.9%-27.6%), respectively. The pooled prevalence of fragility fractures described among CP was 5.9% (95%CI: 3.9%-8.4%). Meta-regression revealed significant association of pancreatic enzyme replacement therapy (PERT) use with prevalence of osteoporosis [coefficient: 1.7 (95%CI: 0.6-2.8);  $P < 0.0001$ ]. We observed no associations with mean age, sex distribution, body mass index, alcohol or smoking exposure, diabetes with prevalence of osteopenia, osteoporosis or fragility fractures. Paucity of data on systemic inflammation, CP severity, and bone mineralization parameters precluded a formal meta-analysis.

## CONCLUSION

This meta-analysis confirms significant bone disease in patients with CP. Other than PERT use, we observed no patient or study-specific factor to be significantly associated with CP-related bone disease. Further studies are needed to identify confounders, at-risk population, and to understand the mechanisms of CP-related bone disease and the implications of treatment response.

**Key Words:** Chronic pancreatitis; Fractures; Osteoporosis; Osteopenia; Bone disease

©The Author(s) 2023. Published by Baishideng Publishing Group Inc. All rights reserved.

**Core Tip:** Bone disease is an under recognized cause of morbidity in chronic pancreatitis (CP). This systematic review and meta-analysis demonstrate substantial burden of bone disease (osteopenia and osteoporosis) and fragility fractures in CP patients. In addition, metaregression has demonstrated a significant association of osteoporosis with pancreatic enzyme replacement. The study is powered by high-quality studies with large sample size and clearly defined study population and outcome measures.

**Citation:** Chhoda A, Hernandez-Woodbine MJ, Addo NAA, Nasir SA, Grimshaw A, Gunderson C, Ahmed A, Freedman SD, Sheth SG. Burden of bone disease in chronic pancreatitis: A systematic review and meta-analysis. *World J Gastroenterol* 2023; 29(8): 1374-1394

**URL:** <https://www.wjgnet.com/1007-9327/full/v29/i8/1374.htm>

**DOI:** <https://dx.doi.org/10.3748/wjg.v29.i8.1374>

## INTRODUCTION

Chronic pancreatitis (CP) is a progressive, multifactorial fibro-inflammatory syndrome, which arises from persistent pathological response to noxious stimuli[1]. It is characterized by chronic abdominal pain, exocrine and endocrine insufficiency. Over time, nutritional deficiencies, systemic inflammation, and etiological factors like alcohol or smoking may disrupt the balance between bone formation and resorption[2]. These maladaptive alterations may subsequently cause bone disease *i.e.*, osteopenia and osteoporosis, leading to fractures which result from low energy trauma, called fragility fractures, and have significant implications on quality of life[3].

Osteoporosis is a public health hazard with a substantial economic burden[4]. Recent data from the National Health and Nutrition Examination Survey found its age-adjusted prevalence among adults older than 50 years to be 12.6% affecting more women than men (19.6% *vs* 4.4%). In view of the burden of bone disease and subsequent fracture risk in individuals affected by CP, various consensus guidelines have recommended baseline bone health assessment[5,6]. The adherence to guidelines has been low and studies have demonstrated that less than a quarter of CP patients are screened for bone disease, suggesting that bone disease is an underappreciated source of morbidity in CP[7,8].

A previous systematic review by Duggan *et al*[9] estimated the prevalence of osteopenia and osteoporosis in patients with CP to be 39.8% and 23.4%, respectively. The analysis was based on a limited number of studies ( $n = 11$ ) and did not quantify fragility fractures which are complications of CP-related bone disease. Over the last decade, multiple large-sized studies including those from multicenter cohorts have investigated bone disease in CP as well as the nutritional, anthropometric, and inflammatory parameters which may impact bone health outcomes. Thus, with quantitative data on covariates and fragility fractures available, an updated synthesis of evidence is pertinent. This systematic review and meta-analysis aims to quantify the prevalence of osteopenia, osteoporosis, and fragility fractures in CP patients and to delineate clinical parameters which impact their occurrence.

## MATERIALS AND METHODS

### Protocol registration

This systematic review was performed in accordance with PRISMA guidelines[10]. The review methodology was pre-registered at open-source forum[11].

### Search strategy

A systematic search of the literature was conducted by a medical librarian in the following databases: Cochrane Library, Ovid Embase, Google Scholar, Ovid Medline, PubMed, Scopus, and Web of Science Core Collection to find articles published from the inception of the database to October 20, 2022. The search was performed using a combination of controlled and free text terms for CP and bone diseases (strategy outlined in [Supplementary Table 1](#)). The search was not limited to publication type or date. The search was peer-reviewed by a second librarian using peer review for electronic search strategies[12]. Citations were imported into an Endnote 20 Library (Version 20.2, Clarivate Analytics, Philadelphia), and after removal of duplicates, the remaining studies were imported into Covidence (Melbourne, Australia) for screening and data extraction.

### Study selection

Two co-authors (MJ, AC) independently used the inclusion and exclusion criteria to assess titles and abstracts. Eligibility decisions and disagreements were reconciled through discussion with the senior author (SS). Full-text articles included by two reviewers underwent data extraction and quality assessment.

**Inclusion criteria:** This systematic review included original cross-sectional and cohort studies, which were of prospective and retrospective design. CP patients were diagnosed based on specific codes related to CP per the International Classification of Diseases (ICD-9/10) and through predefined clinical, radiologic and/or histologic findings (described in [Table 1](#)).

**Exclusion criteria:** The studies which did not report bone diseases in CP patients were ineligible for the systematic review. We also excluded studies published in foreign languages, associated with animal research, reviews, abstracts, letters, case reports, and series with a sample size of less than 10 patients were excluded ([Figure 1](#)).

### Data extraction

We noted data on study design, population characteristics such as age, gender, method of CP diagnosis (ICD-code based *vs* systematic clinical-radiologic features), body mass index (BMI), and exposure to alcohol and smoking. These data were independently extracted by two authors (MJ and AC). The outcome of interest included the prevalence of osteopenia, osteoporosis, and fragility fractures among the CP patients. The definitions of these bone outcome measures were also noted and have been outlined in [Table 2](#).

### Meta-analysis methodology

Prevalence rates were pooled using random-effects meta-analysis and calculated using the score method [13]. Between-study heterogeneity was estimated using  $I^2$  statistics wherein 25%, 50%, and 75% were considered to indicate low, moderate, and high heterogeneity, respectively. Sensitivity analysis was conducted by sequentially removing individual studies. Statistical analysis was performed using Stata/IC, version 17 (StataCorp, College Station, TX). Metaregression, subgroup analysis and publication bias assessment could not be performed for analyses including < 10 studies[14].

### Metaregression

Metaregression using the restricted maximum likelihood method was also performed using variables of mean age, sex, BMI, smoking or alcohol exposure, diabetes, serum parathyroid hormone (PTH), percentage population with vitamin D deficiency, and pancreatic enzyme replacement therapy (PERT).

### Study quality and publication bias assessment

The quality of observational studies was independently assessed using the Newcastle-Ottawa Scale by two investigators (SN and AA) and recorded in a Microsoft Excel spreadsheet (XP Professional Edition; Microsoft Corp, Redmond, WA, United States)[15]. Any discrepancy was resolved by the senior author (SS). Publication bias were assessed by inspection of a funnel plot and Egger's test[16].

Table 1 Description of study design and study population

Ref.	Design	CP patients	CP severity, <i>n</i> (%)	CP etiology, <i>n</i> (%)	Study population	Race	Female patients, <i>n</i> (%)	Age, mean $\pm$ SD	BMI, mean $\pm$ SD
Morán <i>et al</i> [17], 1997	Cross sectional	Clinicoradiological	All severe	Alcohol: 10 (71.4) Idiopathic 4 (28.6)	CP: 14 Controls: -		CP: 0 Controls: -	CP: 56 <sup>1</sup> (-) Controls: -	CP: 22.64 Controls: -
Haaber <i>et al</i> [18], 2000	Cross sectional	Clinicoradiological		Alcohol: 46 (79)	CP: 58 Controls: -	CP: - Controls: -	CP: 26 (44.8) Controls: -	CP: 53 (9) Controls: -	CP: 23 (5) Controls: -
Dujšikova <i>et al</i> [19], 2008	Cross sectional	EUS based criteria	Wiersema classification: Mild: 41 (56.2), moderate: 12 (16.4), severe: 20 (27.4)		CP: 73 Controls: -	CP: - Controls: -	CP: 17 (23.28) Controls: -	CP: 46.61 (13.23) Controls: -	CP: - Controls: -
Tignor <i>et al</i> [20], 2010	Retrospective cohort	ICD-9 code 577.1			CP: 3192 Controls: 1436699	CP: White: 2091 (65.5), black: 419 (13.1), hispanic: 222 (6.9), others: 532 (16.7) Control: White: 860190 (59.9), black: 115199 (8.0), hispanic: 102000, other: 451110	CP: 1636 (51.25) Controls: 907328 (63.15)	CP: - Controls: -	CP: - Controls: -
Sudeep <i>et al</i> [22], 2011	Cross sectional	Not defined		Tropical pancreatitis: 20 (65) Idiopathic: 11 (35)	CP: 31 Controls: 35	CP: - Controls: -	CP: 0 Controls: 0	CP: 35.8 (9) Controls: 38.6 (5.2)	CP: 18.46 (2.86) Controls: 22.6 (3.1)
Joshi <i>et al</i> [21], 2011	Cross sectional	Clinicoradiological		All patients with tropical calcific pancreatitis	CP: 72 Controls: 100	CP: - Controls: -	CP: 34 (47.2) Controls: 50 (50)	CP: 31.1 (10.3) Controls: 32.6 (9.6)	CP: 19 (3.1) Controls: 23.6 (3.2)
Duggan <i>et al</i> [23], 2012	Cross sectional	Clinicoradiological	Cambridge classification: Mild (37.1), severe (27.4)	Alcohol: 24 (38.7) Idiopathic: 38 (61.3)	CP: 62 Controls: 66	CP: - Controls: -	CP: 17 (27.41) Controls: 18 (27.27)	CP: 47.9 (12.5) Controls: 47.74 (11)	CP: 25.6 (5) Controls: 28.0 (4.1)
Sikkens <i>et al</i> [25], 2013	Prospective cohort	Clinicoradiological		Alcohol: 20 (50) Idiopathic: 17 (43) Other: 3 (7)	CP: 40 Controls: -	CP: - Controls: -	CP: 17 (42.5) Controls: -	CP: 52 (11) Controls: -	CP: 24 (5) Controls: -
Prabhakaran <i>et al</i> [28], 2014	Cross sectional	Clinicoradiological.	Cambridge classification: Mild (13.1), moderate (5.05), marked: (81.8)	Alcohol: 72 (70)	CP: 103	CP: -	CP: 0	CP: 38.6 (20.64)	CP: 19.7



				Idiopathic: 31 (29.1)	Controls: -	Controls: -	Controls: 0	Controls: 36.7 (20.70)	Controls: -
Bang <i>et al</i> [26], 2014	Prospective cohort	ICD-10: K86.0 (alcohol induced CP), K86.1 (other CP)			CP: 11972	CP: -	CP: 4011 (33.5)	CP: 54.5 (14)	CP: -
					Controls: 119720	Controls: -	Controls: 40106 (33.49)	Controls: 54.5 (14)	Controls: -
Duggan <i>et al</i> [27], 2015	Cross sectional	Clinicoradiological	Cambridge classification (unspecified number in each category)	Alcohol: 18 (62.1)	CP: 29	CP: -	CP: 12 (41.37)	CP: 44.3 (12.3)	CP: 25.2 (5.1)
				Idiopathic: 8 (27.6)	Controls: 29	Controls: -	Controls: 12 (41.37)	Controls: 45.8 (9.8)	Controls: 27.3 (3.7)
				Other: 3 (10.3)					
Munigala <i>et al</i> [24], 2016	Cross sectional	ICD-9 code 577.1			CP: 3257	CP: White 2120 (65), black 1012 (31), others 125 (4)	CP: 178 (5.46)	CP: 54.2 (11.1)	CP: -
					Controls: 450655	Controls: White: 325132 (72), black: 76031 (17), others: 49492 (11)	Controls: 53108 (11.78)	Controls: 53.6 (13.9)	Controls: -
Kumar <i>et al</i> [29], 2017	Cross sectional	Clinicoradiological			CP: 102	CP: -	CP: 17 (16.7)	CP: 40.8 (12.6)	CP: 22.5 (3.2)
					Controls: -	Controls: -	Controls: -	Controls: -	Controls: -
Stigliano <i>et al</i> [32], 2018	Cross sectional	M-ANNHEIM criteria	M-ANNHEIM scoring system: Minor: 74 (35), Increased: 99 (47), advanced: 32 (15), marked: 6 (3)	Alcoholic: 91 (43)	CP: 211	CP: -	CP: 69 (32.7)	CP: 60 (-)	CP: 24 (4)
				Idiopathic: 40 (19)	Controls: -	Controls: -	Controls: -	Controls: -	Controls: -
				Hereditary: 8 (4)					
				Obstructive: 12 (5.7)					
Kuhlmann <i>et al</i> [30], 2018	Cross sectional	Score $\geq 4$ points based on Lüneburg criteria			CP: 67	CP: -	CP: 27 (40.29)	CP: 60 <sup>1</sup> (-)	CP: 22.7 (15-37.9)
					Controls: -	Controls: -	Controls: -	Controls: -	Controls: -
Min <i>et al</i> [31], 2018	Prospective cohort	EUS criteria and/or secretin stimulation testing	EUS criteria (unspecified number in each category)	Toxic/metabolic: 54 (59.3)	CP: 91	CP: -	CP: 34 (37.36)	CP: 48.6 (10.4)	CP: 26.1 (7.8)
				Idiopathic: 17 (18.6)	Controls: -	Controls: -	Controls: -	Controls: -	Controls: -
				Hereditary: 13 (14.3)					
				Autoimmune: 5 (5.5)					
Gupta <i>et al</i> [33], 2019	Prospective cohort	Clinicoradiological and EUS			CP: 38	CP: White 35 (92), black 3 (8)	CP: 19 (50)	CP: 44 (10.7)	CP: 26.7 (5.9)
					Controls: -	Controls: -	Controls: -	Controls: -	Controls: -



Kanakis <i>et al</i> [7], 2020	Retrospective cohort	Clinicoradiological			CP: 239	CP: White 43 (88), minorities: 6 (12)	CP: 37 (15.48)	CP: 56 <sup>1</sup> (-)	CP: 23 (8)
					Controls: -	Controls: -	Controls: -	Controls: -	Controls: -
Hart <i>et al</i> [34], 2021	Cross sectional	Clinicoradiological	Cambridge classification (unspecified number in each category)	-	CP: 282	CP: White race (87.2), minorities (12.8)	CP: 145 (51.41)	CP: 56 <sup>1</sup> (-)	CP: -
					Controls: -	Controls: -	Controls: -	Controls: -	Controls: -
Vujasinovic <i>et al</i> [8], 2021	Retrospective cohort	2002 Asia-Pacific consensus report		Alcohol and smoking: 40 (33.9)	CP: 118	CP: -	CP: 49 (41.52)	CP: 53.1 (16.3)	CP: 23.9 (4.4)
				Smoking only: 12 (11)	Controls: -	Controls: -	Controls: -	Controls: -	Controls: -
				Alcohol only: 7 (5.9)					
				Hereditary: 21 (11.8)					
				Immunological: 23 (14.4)					
				Efferent duct factors: 11 (9.3)					
Tang <i>et al</i> [35], 2021	Cross sectional	ICD-9 based codes	M-ANNHEIM clinical stage 0: 6 (5.8), I: 59 (56.7), II: 26 (25.0), III: 8 (7.7), IV: 5 (4.8)		CP: 104	CP: -	CP: 31 (29.8)	CP: 46.08 (14.43)	CP: 21.43 (2.85)
					Controls: -	Controls: -	Controls: -	Controls: -	Controls: -

<sup>1</sup>Number of subjects who consented to Dual-energy X-ray Absorptiometry scan if detailed in the studies

CP: Chronic pancreatitis; BMI: Body mass index; EUS: Endoscopic ultrasound; ICD: International Classification of Diseases.

## RESULTS

### Literature search

The literature search yielded 2081 results and after the removal of 20 duplicates, 2061 citations underwent title and abstract screening. The exclusion of 1979 citations due to lack of relevance to the research question resulted in 82 citations for full-text review. The review of their full texts enabled exclusion of 61 citations and finally 21 studies were included[7,8,17-35] (Supplementary Table 2). The excluded studies had incorrect study design ( $n = 27$ ), wrong outcomes ( $n = 17$ ), ineligible patient population ( $n = 8$ ), non-English language ( $n = 6$ ), wrong setting ( $n = 3$ ), and duplicate center or overlapping populations ( $n = 1$ ) (Supplementary Table 3). The search and selection processes are summarized in Figure 1.

### Study design

All the eligible studies were observational studies and included 14 cross-sectional and 7 cohort studies (described in Table 1). Among the cohort studies, four were performed prospectively[25,26,31,33], and remaining three had retrospective design[7,8,35]. Most of the studies originated from European

**Table 2 Characteristics of study outcomes, *n* (%)**

Ref.	Population	Outcome definition	Osteoporosis	Osteopenia	Pathologic fracture
Morán <i>et al</i> [17], 1997	CP: 14	T score < -2.5	CP: 3 (21.4)	CP: 10 (71.4)	CP: -
	Controls: -	T score -1 to -2.5	Controls: -	Controls: -	Controls: -
		Unavailable			
Haaber <i>et al</i> [18], 2000	CP: 58	Z score < -2	CP: 13 (22.4)	CP: 36 (62)	CP: -
	Controls: -	Z score < -1.0	Controls: -	Controls: -	Controls: -
		Unavailable			
Dujsikova <i>et al</i> [19], 2008	CP: 73	T score < -2.5	CP: 4 (5.5)	CP: 19 (26)	CP: 1 (1.3)
	Controls: -	T score -1 to -2.5	Controls: -	Controls: -	Controls: -
		Undefined			
Tignor <i>et al</i> [20], 2010	CP: 3192	Not studied	CP: -	CP: -	CP: 154 (4.8)
	Controls: 1436699	Not studied	Controls: -	Controls: -	Controls: -
		Vertebral, hip, and wrist fractures using ICD-9 codes			
Sudeep <i>et al</i> [22], 2011	CP: 31	T score < -2.5	CP: 9 (29)	CP: -	CP: -
	Controls: 35	T score -1 to -2.5	Controls: 3 (8.5)	Controls: -	Controls: -
		Unavailable			
Joshi <i>et al</i> [21], 2011	CP: 72	Z score < -2	CP: 22 (30.5)	CP: -	CP: 0
	Controls: 100	Unavailable	Controls: -	Controls: -	Controls: -
		Undefined			
Duggan <i>et al</i> [23], 2012	CP: 62	T score < -2.5	CP: 18 (33)	CP: 21 (39.6)	CP: -
	Controls: 66	T score -1 to -2.5	Controls: 6 (10.1)	Controls: 20 (33.8)	Controls: -
		Unavailable			
Sikkens <i>et al</i> [25], 2013	CP: 40	T score < -2.5	CP: 4 (10)	CP: 18 (45)	CP: -
	Controls: -	T score -1 to -2.5	Controls: -	Controls: -	Controls: -
		Unavailable			
Prabhakaran <i>et al</i> [28], 2014	CP: 103	T score < -2.5	CP: 25 (30.1)	CP: 38 (45.7)	CP: -
	Controls: -	T score -1 to -2.5	Controls: -	Controls: -	Controls: -
		Unavailable			
Bang <i>et al</i> [26], 2014	CP: 11972	M80.0-M81.9 based on ICD-10 code	CP: 898 (7.5)	CP: -	CP: 1055 (8.8)
	Controls: 119720	Unavailable	Controls: 4070 (3.3)	Controls: -	Controls: 8485 (7)
		Spine, humerus, distal forearm, and proximal femur based on ICD-10 codes			
Duggan <i>et al</i> [27], 2015	CP: 29	T score < -2.5	CP: 9 (31)	CP: 13 (44.8)	CP: -
	Controls: 29	T score -1 to -2.5	Controls: 2 (6.8)	Controls: 15 (51.7)	Controls: -
		Unavailable			
Munigala <i>et al</i> [24], 2016	CP: 3257	Unspecified ICD-9 codes	CP: -	CP: -	CP: 153 (4.6)
	Controls: 450655	Unavailable	Controls: -	Controls: -	Controls: 9325 (2)
		ICD-9 codes: vertebral (805.2, 805.3, 805.4, 805.5, 805.6, 805.7), hip (820.0, 820.1, 820.2, 820.3, 820.8, 820.9), or wrist fractures (814.0, 814.1, 813.4, 813.5)			

Kumar <i>et al</i> [29], 2017	CP: 102	Z score < -2	CP: 6 (5.8)	CP: 21 (20.5)	CP: -
	Controls: -	Unavailable	Controls: -	Controls: -	Controls: -
Stigliano <i>et al</i> [32], 2018	CP: 211	T score < -2.5	CP: 46 (21.8)	CP: 89 (42.1)	CP: 13 (6.1)
	Controls: -	T score: -1 to -2.5	Controls: -	Controls: -	Controls: -
Kuhlmann <i>et al</i> [30], 2018	CP: 67	T score < -2.5	CP: 18 (26.8)	CP: 34 (50.7)	CP: -
	Controls: -	T score: -1 to -2.5	Controls: -	Controls: -	Controls: -
Min <i>et al</i> [31], 2018	CP: 91	T score < -2.5	CP: 10 (22.2)	CP: 21 (46.6)	CP: -
	Controls: -	T score: -1 to -2.5	Controls: -	Controls: -	Controls: -
Gupta <i>et al</i> [33], 2019	CP: 38	T score < -2.5	CP: 21 (55.2)	CP: -	CP: -
	Controls: -	T score: -1 to -2.5	Controls: -	Controls: -	Controls: -
Kanakakis <i>et al</i> [7], 2020	CP: 239	T score < -2.5 or history of fragility fracture	CP: 15 (30.6)	CP: 27 (55.1)	CP: 22 (9)
	Controls: -	T score: -1 to -2.5	Controls: -	Controls: -	Controls: -
Hart <i>et al</i> [34], 2021	CP: 282	T score < -2.5	CP: 48 (17)	CP: 110 (39)	CP: 6 (2.1)
	Controls: -	T score: -1 to -2.5	Controls: -	Controls: -	Controls: -
Vujasinovic <i>et al</i> [8], 2021	CP: 118	T score < -2.5	CP: 30 (25.4)	CP: 33 (27.9)	CP: 33 (27.9)
	Controls: -	T score: -1 to -2.5	Controls: -	Controls: -	Controls: -
Tang <i>et al</i> [35], 2021	CP: 104	T score < -2.5	CP: 6 (5.7)	CP: 32 (30.7)	CP: -
	Controls: -	T score: -1 to -2.5	Controls: -	Controls: -	Controls: -

Occurring in the hip, spine, or wrist

CP: Chronic pancreatitis; ICD: International Classification of Diseases.

countries ( $n = 9$ ), while the remaining were from the United States ( $n = 6$ ), India ( $n = 4$ ), China ( $n = 1$ ), and Argentina ( $n = 1$ ). Multicenter collaboration was noted in two eligible studies whereas the remaining 19 were performed at single centers. The controls of matched patients were also analyzed in seven studies which were from a healthcare system ( $n = 3$ )[20,22,24]; healthy community population ( $n = 3$ )[21,26,27]; or were not defined ( $n = 1$ )[28].

### Population characteristics

The qualitative review of 21 studies included 20155 CP patients and 2007278 control patients (from seven controlled studies). The patients with CP were identified based on the combination of clinical, radiologic, endoscopic and/or histologic findings in 17 studies[7,8,17-19,21-23,25,27-34], and diagnosed through ICD-9/10 codes in four studies[20,24,26,35] (Table 1).

### Prevalence of bone disease

We performed meta-analysis of 21 eligible studies which included 20155 CP patients evaluated for bone disease.

**Prevalence of osteopenia in CP patients:** In adult CP patients, the pooled prevalence of osteopenia was 41.2% (95%CI: 35.2%-47.3%,  $P < 0.0001$ ;  $\chi^2 = 63.0$ ,  $df = 14$ ,  $P < 0.0001$ ;  $I^2 = 77.8\%$ ,  $\tau^2 = 0.04$ )[7,8,17-19,23,25,27-32,34,35] (Figure 2A). All of the studies prevalence estimates had high heterogeneity since  $I^2 > 75\%$ .

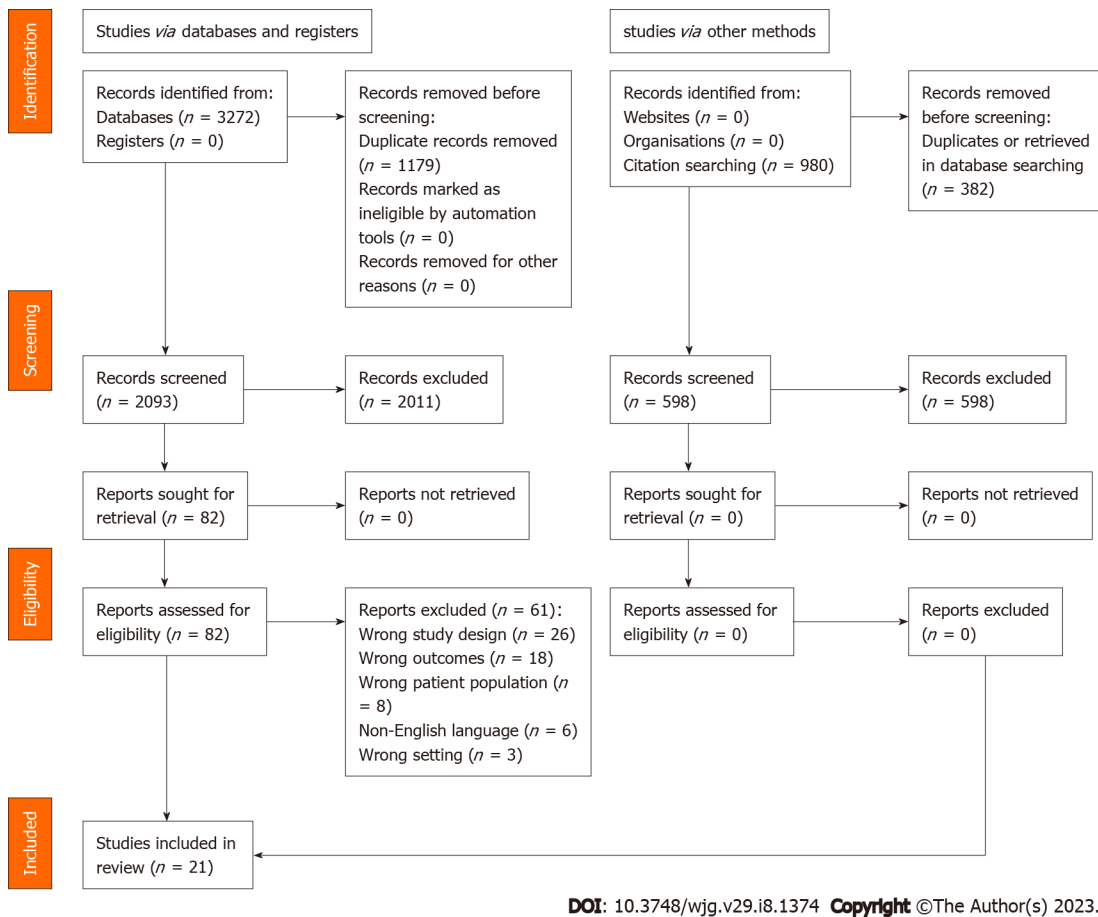


Figure 1 PRISMA flow diagram describing study selection.

**Prevalence of osteoporosis among CP patients:** The pooled prevalence of osteoporosis in CP patients was 20.9% (95%CI: 14.9%-27.6%;  $P < 0.0001$ ;  $\chi^2 = 290.33$ ,  $df = 18$ ,  $P < 0.0001$ ;  $I^2 = 93.8\%$ ,  $\tau^2 = 0.1$ ) [7,8,17-19, 21-23,25-35] (Figure 2B). The pooled prevalence of osteoporosis in CP patients had high heterogeneity since  $I^2 > 75\%$ .

**Prevalence of fragility fracture among CP patients:** The pooled prevalence of fragility fracture was 5.9% (95%CI: 3.9%-8.4%,  $P < 0.0001$ ;  $\chi^2 = 186.0$ ,  $df = 8$ ,  $P < 0.0001$ ;  $I^2 = 95.7\%$ ,  $\tau^2 = 0.02$ ) [7,19-21,24,26,32,34, 35] (Figure 2C). All of the studies prevalence estimates had high heterogeneity since  $I^2 > 75\%$ .

**Factors impacting bone disease in CP patients:** Various covariates underwent qualitative assessment for their association with CP related bone disease (Table 3).

**Baseline patient characteristics:** Female population was excluded in three studies [17,22,28] whereas 6376 (31.6%) female subjects were incorporated in the remaining 18 studies. In addition, three studies excluded post-menopausal females [19,25,33]. The race of CP patients was described in only five studies [7,20,24,33,34]. Its association with bone disease was investigated only by Hart and colleagues and they observed significantly higher burden among Caucasian population [34].

**CP activity:** The impact of CP severity on the bone outcomes was investigated in only one third of the eligible studies [17,19,27,28,31,32,34]. These studies observed no correlation with CP severity and alteration in bone mineral density. Moreover, the association of bone disease with duration of CP was also studied and lacked statistically significance [18,29,32,33,34,35]. The studies by Sikkens *et al* [25], and Kuhlman *et al* [30], observed a significant association of bone disease with exocrine insufficiency. Improved bone disease outcomes were observed in patients receiving PERT based on four large sized studies [8,26,30,34]. PERT usage and CP-related bone disease lacked statistical significance in five observational studies [17,22,23,28,32].

**Inflammatory factors:** Inflammation-based biomarkers such as C-reactive protein and interleukin (IL)-6 levels also yielded non-significant results in the investigation by two groups [27,32].

**Endocrine factors:** Among the eligible studies, hormones which regulate calcium metabolism have been widely studied. Serum 25-OH cholecalciferol had a positive correlation with bone density in three

Table 3 Characteristics of various covariates and their association with outcome measures

Ref.	PERT use, <i>n</i> (%)	Inflammatory markers: CRP/IL-6, mean $\pm$ SD	Vitamin D deficiency, <i>n</i> (%)	Serum PTH, mean $\pm$ SD	Alcohol exposure, <i>n</i> (%)	Smokers, <i>n</i> (%)	Diabetes, <i>n</i> (%)	Nutritional parameters	Relevant covariates findings
Morán <i>et al</i> [17], 1997	CP: 4 (28.57) Controls: -	CP: - Controls: -	CP: 7 (50) Controls: -	CP: - Controls: -	CP: 0 Controls: -	CP: - Controls: -	CP: - Controls: -	Mean serum albumin 3.8 g/dL, 4 (28.6) had BMI < 20. Non-significant associations between osteopathy and BMI	Non-significant associations between osteopathy and (1) CP severity (as per fecal fat or bicarbonate secretion assessments); (2) CP etiology; (3) Age; and (4) Vitamin D, PTH or calcium
Haaber <i>et al</i> [18], 2000	CP: 26 (44.82) Controls: -	CP: - Controls: -	CP: - Controls: -	CP: 40 <sup>1</sup> (31) Controls: -	CP: - Controls: -	CP: - Controls: -	CP: - Controls: -		Non-significant associations between osteopathy and (1) Duration of CP; and (2) Vitamin D and PTH
Dujsikova <i>et al</i> [19], 2008	CP: - Controls: -	CP: - Controls: -	CP: 63 (86.3) Controls: -	CP: - Controls: -	CP: 8 (10.95) Controls: -	CP: - Controls: -	CP: - Controls: -		Non-significant associations between osteopathy and severity of disease
Tignor <i>et al</i> [20], 2010	CP: - Controls: -	CP: - Controls: -	CP: - Controls: -	CP: - Controls: -	CP: - Controls: -	CP: - Controls: -	CP: - Controls: -		No descriptions of regression analysis or covariate adjustment
Sudeep <i>et al</i> [22], 2011	CP: - Controls: -	CP: - Controls: -	CP: 16 (51.6) Controls: -	CP: - Controls: -	CP: - Controls: -	CP: - Controls: -	CP: - Controls: -	BMI correlated significantly with BMC ( $r = 0.426$ ; $P = 0.017$ ). There was an inverse correlation between stool fat and BMC ( $r = -0.47$ ; $P = 0.03$ )	Non-significant associations between osteopathy and (1) EPI (as per 72-hour fecal fat); and (2) Vitamin D
Joshi <i>et al</i> [21], 2011	CP: 33 (45.83) Controls: -	CP: CRP < 0.32 (-) Controls: CRP < 0.32 (-)	CP: 62 (86.11) Controls: 85 (85)	CP: 43.38 <sup>1</sup> (-) Controls: 84.87 <sup>1</sup> (-)	CP: - Controls: -	CP: 7 (9.7) Controls: -	CP: 52 (72.2) Controls: -	Lumbar Z score was associated with BMI (beta: 0.276; $P = 0.04$ ), serum albumin was significantly lower in patients compared with controls [4.0 (0.6) <i>vs</i> 4.6 (0.7) g/dL, $P < 0.001$ ]	
			Significant association of Lumbar Z score with log vitamin D (beta: 0.274; $P = 0.04$ )						
Duggan <i>et al</i> [23], 2012	CP: - Controls: -	CP: - Controls: -	CP: - Controls: -	CP: - Controls: -	CP: 58 (93.5) Controls: 62 (93.9)	CP: 46 (74.19) Controls: 40 (60.6)	CP: - Controls: -	BMI < 20: low BMD: 15 (23.8) <i>vs</i> normal BMD 10 (1.1)	Higher T scores for the lowest age tertile ( $P = 0.003$ ). Lower T-score for smokers ( $P = 0.002$ ). Non-significant associations between T scores at any area and (1) CP severity; (2) EPI; and (3) Ssex
Sikkens <i>et al</i> [25], 2013	CP: 19 (47.5) Controls: -	CP: - Controls: -	CP: - Controls: -	CP: - Controls: -	CP: 1 (2.5) Controls: -	CP: 27 (67.5) Controls: -	CP: - Controls: -	A high BMI is predictive of a "higher" lowest T-score [Coeff: 0.58 (0.2); $P = 0.003$ ]	Significant association between osteopathy and untreated EPI ( $P = 0.013$ )
Prabhakaran	CP: -	CP: -	CP: 20 (19.41)	CP: 27.6	CP: 72 (69.9)	CP: -	CP: 39	-	Non-significant associations between osteopathy

<i>et al</i> [28], 2014				(39.8)			(37.86)		and (1) EPI (as per steatorrhea assessment); (2) CP severity; and (3) CP etiology
	Controls: -	Controls: -	Controls: -	Controls: -	Controls: -	Controls: -	Controls: -		
			Non-significant associations between osteopathy and vitamin D, PTH and alkaline phosphatase						
Bang <i>et al</i> [26], 2014	CP: 3545 (29.61)	CP: -	CP: -	CP: -	CP: 3651 (30.49)	CP: -	CP: -		Increased risk of fracture among smokers (HR, 1.8; 95%CI, 1.7-1.8) and alcohol related CP (HR, 2.0 vs 1.5; $P < 0.0001$ )
	Controls: -	Controls: -	Controls: -	Controls: -	Controls: 2753 (2.29)	Controls: -	Controls: -		
	Reduced fracture risk among PERT treated CP patients (HR, 0.8; 95%CI, 0.7-0.9)								
Duggan <i>et al</i> [27], 2015	CP: -	CP: CRP: 3.15 (-), IL-6: 5.61 (-)	CP: 20	CP: 47.1 (19.4)	CP: 27 (93.10)	CP: 23 (79.3)	CP: -	Lower T scores were associated with BMI ( $P = 0.04$ )	Lower T scores were associated with age ( $P = 0.006$ ). Non-significant association with carboxy-terminal telopeptide of type I collagen; osteocalcin; Procollagen 1 amino-terminal propeptide
	Controls: -	Controls: CRP: 0.9 (-), IL-6: 3.58 (1.82)	Controls: 18	Controls: 46.3 (14)	Controls: 28 (96.55)	Controls: 10 (34.4)	Controls: -		
		Non-significant association with IL-6 and CRP	Lower T scores were associated with serum vitamin D ( $P = 0.002$ ). No association with PTH						
Munigala <i>et al</i> [24], 2016	CP: -	CP: -	CP: -	CP: -	CP: 494 (15.16)	CP: 505 (15.5)	CP: -	A significant association of BMD in the columnar spine with vitamin D level (coefficient 0.13 g/cm <sup>2</sup> ; $P = 0.017$ ) and BMI (coefficient 0.14 g/cm <sup>2</sup> ; $P = 0.007$ ) were observed on univariate analysis	Increased fracture risk among males (adjusted OR, 1.73% (95%CI: 1.46%-2.05%); $P < 0.0001$ ), alcohol consumers (OR, 2.30), and smokers (OR, 1.97). Non-significant associations between osteopathy and age
	Controls: -	Controls: -	Controls: -	Controls: -	Controls: 37146 (8.24)	Controls: 77926 (17.29)	Controls: -		
Kumar <i>et al</i> [29], 2017	CP: -	CP: -	CP: 69 (67.64)	CP: -	CP: -	CP: -	CP: 54 (52.94)	A MUST score (malnutrition score) of 1 or higher was associated with an increased risk for osteopenia and osteoporosis on Fisher's exact test ( $P = 0.0037$ )	Non-significant association between osteopathy and duration of CP
	Controls: -	Controls: -	Controls: -	Controls: -	Controls: -	Controls: -	Controls: -		
			Non-significant association between osteopathy and vitamin D						
Stigliano <i>et al</i> [32], 2018	CP: 116 (54.97)	CP: -	CP: 119 (56.39)	CP: -	CP: 127 (60.18)	CP: 145 (68.72)	CP: 77 (36.49)	Observed significant association of BMI with osteopathy (OR 0.89;	Osteopathy more prevalent with increasing age (OR 1.06; $P = 0.0002$ ), female sex (OR: 3.44; $P =$

	Controls: -	Controls: -	Controls: -	Controls: -	Controls: -	Controls: -	Controls: -	95%CI: 0.83-0.96; $P = 0.003$ )	0.0005). Non-significant association between osteopathy and (1) CP severity; (2) EPI (as assessed by fecal elastase); (3) Smoking; (4) Duration of CP; and (5) Alcohol exposure
	Non-significant association between osteopathy and PERT usage	Non-significant association between osteopathy and IL-6/CRP	Non-significant association between osteopathy, vitamin D and PTH						
Kuhlmann <i>et al</i> [30], 2018	CP: 28 (41.79)	CP: -	CP: -	CP: -	CP: 42 (62.68)	CP: 42 (62.68)	CP: 22 (32.83)	The underweight BMI category, had significant higher odds of osteopathy (OR: 7.40; 95%CI: 1.56-34.99; $P < 0.001$ )	Lower Z scores associated with (1) EPI ( $P = 0.01$ ); (2) Smoking ( $P = 0.02$ ). Non-significant association with alcohol exposure
	Controls: -	Controls: -	Controls: -	Controls: -	Controls: -	Controls: -	Controls: -		
			Lower Z scores associated with vitamin D ( $P = < 0.001$ )						
Min <i>et al</i> [31], 2018	CP: -	CP: -	CP: -	CP: -	CP: -	CP: -	CP: -	Non-significant association with BMI	Non-significant association with (1) CP severity; (2) PERT usage
	Controls: -	Controls: -	Controls: -	Controls: -	Controls: -	Controls: -	Controls: -		
Gupta <i>et al</i> [33], 2019	CP: -	CP: -	CP: -	CP: -	CP: 13 (34.21)	CP: 18 (47.36)	CP: 12 (31.57)		Low bone mass was associated with lower BMI. Non-significant association with CP duration
	Controls: -	Controls: -	Controls: -	Controls: -	Controls: -	Controls: -	Controls: -		
Kanakis <i>et al</i> [7], 2020	CP: -	CP: -	CP: -	CP: -	CP: 130 (54.39)	CP: 132 (55.23)	CP: -	For patients, there was no association between total hip BMD and BMI ( $P = 0.753$ )	No descriptions of regression analysis or covariate adjustment
	Controls: -	Controls: -	Controls: -	Controls: -	Controls: -	Controls: -	Controls: -		
Hart <i>et al</i> [34], 2021	CP: 161 (57.09)	CP: -	CP: -	CP: -	CP: -	CP: 191 (67.7)	CP: 111 (39.36)	Higher osteopathy risk associated with low BMI ( $P \leq 0.001$ )	Increased risk of osteopathy with white race ( $P = 0.017$ ), age ( $P \leq 0.001$ ), female sex ( $P \leq 0.01$ ) and past or present smoking ( $P \leq 0.01$ ). No associations with (1) CP severity (per atrophy assessment); and (2) Duration of CP
	Controls: -	Controls: -	Controls: -	Controls: -	Controls: -	Controls: -	Controls: -		
	Reduced osteopathy among PERT users ( $P = 0.02$ )								
Vujasinovic <i>et al</i> [8], 2021	CP: 104 (88.13)	CP: -	CP: -	CP: -	CP: 53 (44.91)	CP: 76 (64.4)	CP: 28 (23.72)		
	Controls: -	Controls: -	Controls: -	Controls: -	Controls: -	Controls: -	Controls: -		
	Reduced time to first fracture in PERT-treated patients								
Tang <i>et al</i> [35], 2021	CP: 51	CP: CRP: 0.75 (-), IL-6: 4.51 (-)	CP: 76 (73.07)	CP: 40.86 (-)	CP: 52 (50)	CP: 45 (43.26)	CP: 28 (26.92)	Independent predictors of osteopathy: BMI (OR, 0.72; 95%CI, 0.58-0.89; $P = 0.003$ )	Non-significant association between osteopathy and (1) Age; and (2) Duration of CP
	Controls: -	Controls: -	Controls: -	Controls: -	Controls: -	Controls: -	Controls: -		
		Non-significant	Non-significant						



	association between osteopathy and IL- 6/CRP	association between osteopathy and PTH
--	--	---

<sup>1</sup>Number of subjects who consented to Dual-energy X-ray Absorptiometry scan if detailed in the studies.  
CP: Chronic pancreatitis; EPI: Exocrine pancreatic insufficiency; PTH: Parathyroid; PERT: Pancreatic enzyme replacement; BMI: Body mass index; CRP: C-reactive protein; IL-6: Interleukin 6.

studies[21,27,30], whereas the remaining reported no significant associations[17,18,22,28,29,32]. Similarly, alkaline phosphatase and calcium had non-significant correlation with bone mineral density in two studies[17,28]. Serum PTH level did not correlate with bone disease in three studies[17,18,28], in contrast to the significant association found by Stigliano *et al*[32], Duggan *et al*[27], and Tang *et al*[35]. Novel bone turnover-based biomarkers *i.e.*, carboxy-terminal telopeptide of type I collagen, osteocalcin, procollagen 1 amino-terminal propeptide also had non-significant results in limited observational studies[27,35]. Thyroid-stimulating hormones and Insulin-like growth factors 1 were considered by Munigala *et al*[24], but no correlation was found with bone mineral density (BMD). Although hypogonadism was higher in subjects with low BMD in the study by Gupta *et al*[33], no statistically significant difference was found. Exogenous hormone uses or replacement therapy was not investigated in any of the included studies.

**Nutritional factors:** The evidence linking BMI with bone disease outcomes has been conflicting. Whereas six studies described higher BMI as a protective factor[19,21-23,30,32,35], others reported an increased risk or non-significant findings[17,31,33,34]. Serum albumin was also explored in two studies with no mention of outcome association[17,21]. Min and colleagues studied the Malnutrition Universal Screening Tool, a validated nutritional assessment tool and observed that a score of 1 or more had significant association with osteopenia and osteoporosis ( $P = 0.004$ )[31]. Three studies described calcium supplement intake but did not study its relationship with bone disease[21,22,30].

**Lifestyle factors:** The definitions for exposure to alcohol and/or smoking were heterogeneous with limited evidence on their impact on bone outcomes[7,8,17,19,21,23-28,30,32-35]. Outdoor activity and sunlight exposure was only investigated by Joshi *et al*[21], and although correlated positively with vitamin D levels, their impact on osteoporosis was not studied.

**Meta-regression**

Meta-regression revealed significant association of PERT use with prevalence of osteoporosis [coefficient: 1.7 (95%CI: 0.6-2.8);  $P < 0.0001$ ] but not with osteopenia or fragility fractures. No associations with mean age, sex distribution, BMI, alcohol or smoking exposure, vitamin D deficiency, PTH levels, and diabetes with prevalence of osteopenia, osteoporosis or fragility fractures (Table 4).

**Sensitivity analysis**

Sensitivity analysis through forest plot calculation was performed using the “remove one study” method as described above. Confidence intervals and heterogeneity was measured through  $I^2$  and no significant alterations were observed after removal of one particular study (Supplementary Table 4).

Table 4 Metaregression of outcome measures with various covariates

Covariates	Osteopenia		Osteoporosis		Fragility fracture	
	95%CI	P value	95%CI	P value	95%CI	P value
Sex distribution	0.2 (-1.2-1.5)	P = 0.8	0.5 (-1.9-2.9)	P = 0.7	0.3 (-3.2-3.7)	P = 0.9
Age	0.0 (0-1)	P = 0.6	0.0 (-0.1-0.0)	P = 0.3	0.0 (-0.5-0.4)	P = 0.7
DM	0.3 (-5.5-6.0)	P = 0.9	0.0 (-3.9-3.8)	P = 0.9	-13.8 (-107.4-79.8)	P = 0.3
Alcohol use	0.0 (-1.5-1.3)	P = 0.1	0.8 (-8.5-10.0)	P = 0.7	-0.5 (-5.4-4.4)	P = 0.3
Vitamin D	0.0 (-0.02-0.0012)	P = 0.4	-0.002 (-0.004-0.001)	P = 0.2	0.0 (-0.003-0.005)	P = 0.5
PTH levels	0.002 (-0.02-0.02)	P = 0.5	0.0 (-0.02-0.03)	P = 0.4	-	-
PERT	1.7 (0.6-2.8)	P = 0.2	1.7 (0.6-2.8)	P < 0.0001	1.0 (-4.3-6.2)	P = 0.5
Smoking	0.0 (-3.6-3.6)	P = 0.9	-0.5 (-2.9-1.9)	P = 0.6	2.0 (-3.4-7.9)	P = 0.3
Mean BMI	NA	P = 0.9	0.0 (-0.12-0.21)	P = 0.6	0.5 (-17.2-18.2)	P = 0.8

DM: diabetes mellitus; PTH: Parathyroid; PERT: Pancreatic enzyme replacement; NA: P value calculated through Monte Carlo permutation, coefficient not available; -: Insufficient values.

### Study quality and publication bias assessment

All the observational studies were assessed for quality in selection, comparability, and outcome/exposure domain and their scores ranged from 5-8 and were in good agreement (93% agreement, Cohen's  $\kappa = 0.87$ ) (Supplementary Table 5). The comparability domain was variable based upon the presence or absence of controls. Visual inspection of funnel plot and Egger's regression for studies describing osteopenia ( $P = 0.003$ ), and osteoporosis ( $P < 0.001$ ) demonstrated significant publication bias (Figure 3).

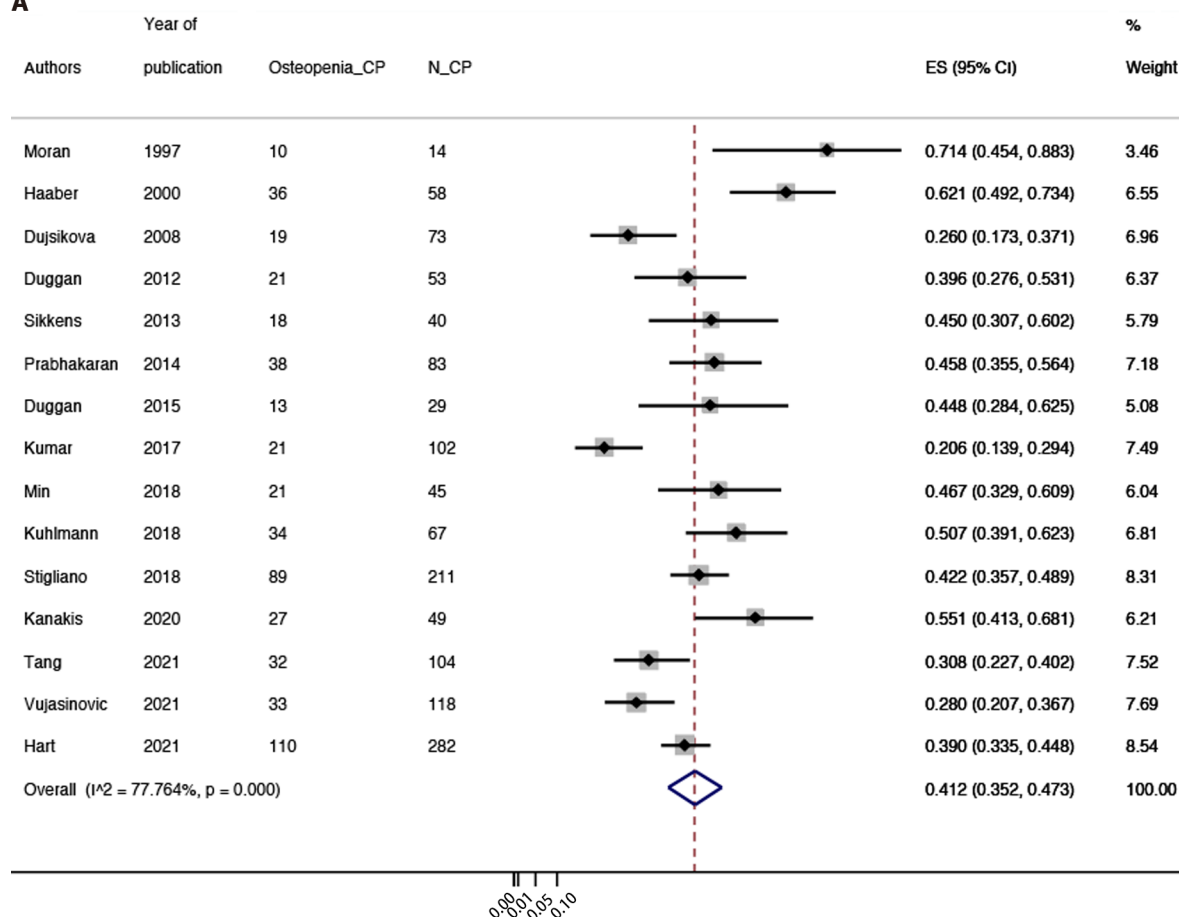
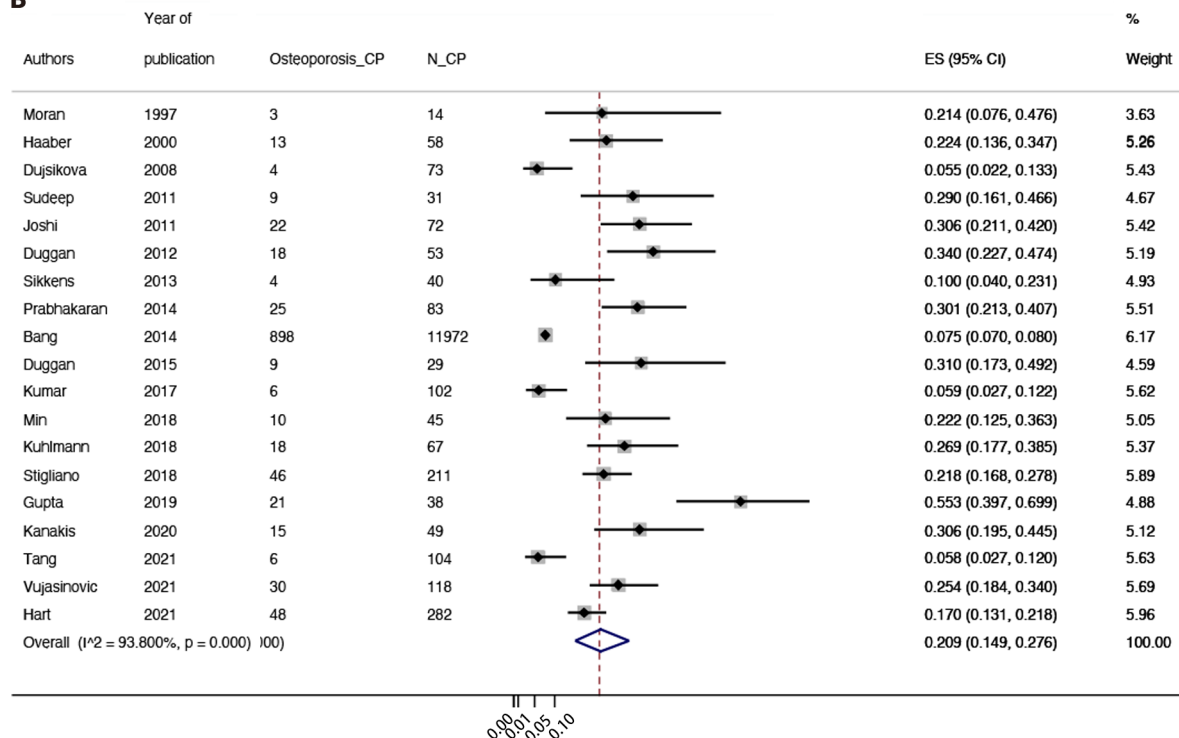
## DISCUSSION

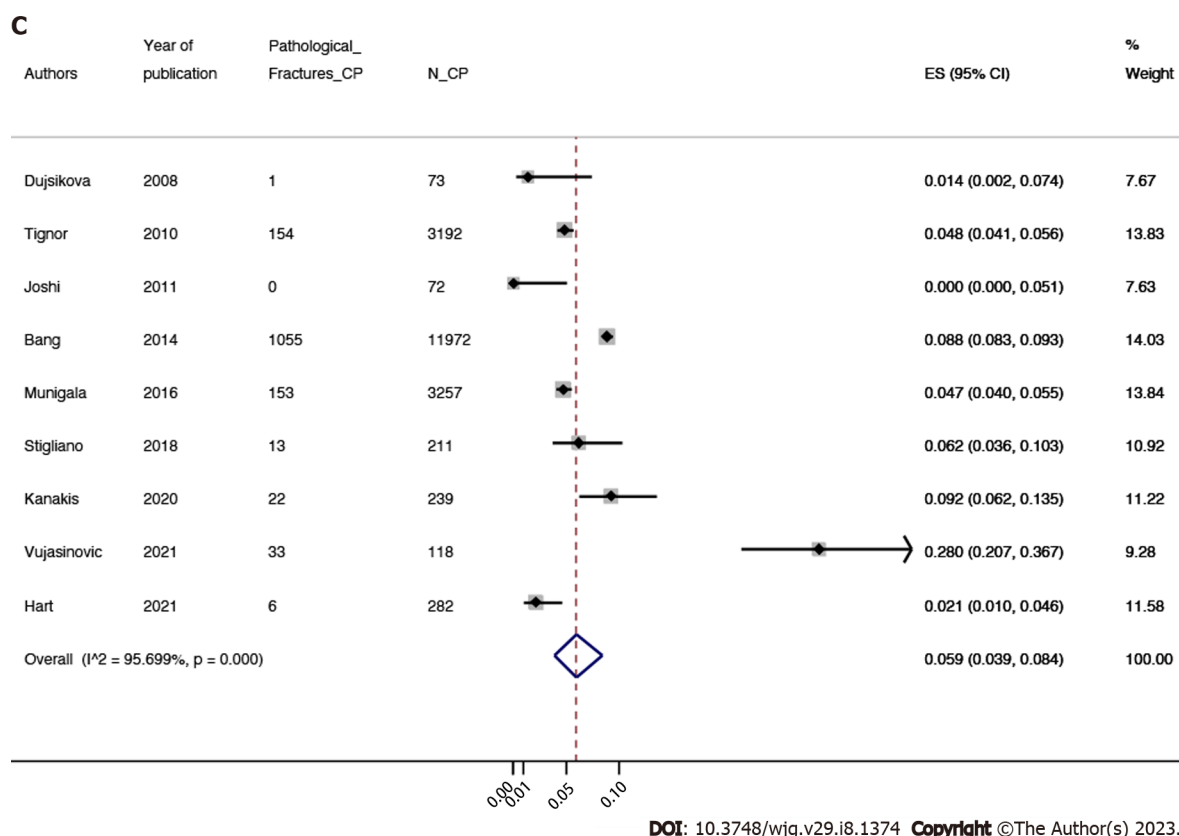
Through this systematic review we present the burden of osteopenia, osteoporosis, and fragility fractures in CP patients. The majority of the studies used bone mineral density to quantitate bone disease, which is a validated tool for use in the general population[36]. Our meta-analyses revealed osteopenia and osteoporosis to be prevalent in 41.2% and 20.9% of the CP population, respectively. We also observed a fracture risk of 5.9% among CP patients, which includes low trauma fractures predominantly in the hip, vertebrae and distal radius. These may cause pain, falls, and hospitalizations which may significantly impair the lives of CP patients along with pre-existing morbidities like malabsorption and chronic abdominal pain[37].

Although dedicated studies among CP patients are lacking, reduced bone mass and resultant fractures cause significant pain, reduced functionality, and quality of life in both men and women[38]. Chronic inflammatory conditions affecting the gastrointestinal tract, such as inflammatory bowel disease, celiac disease and chronic liver disease have been known to disrupt the balance between bone resorption and formation and cause bone disease. Histomorphometric analysis among alcohol related CP patients has revealed low cortical and trabecular bone thickness and endocortical apposition and growth rate as compared to controls[39]. Similarly, increased bone turnover and mineralization defects due to malnutrition have been observed in CP[27,40]. Although recent CP guidelines in the United States and Europe have suggested surveillance of bone-related disorders, studies report poor adherence to these guidelines, suggesting CP-related bone disease is an underappreciated clinical entity[7,8].

CP-related bone disease has been quantified previously by Duggan *et al*[9] in 2014 who observed similar prevalence of osteopenia and osteoporosis *i.e.*, 39.8% and 23.4%, respectively. Since this publication, over the past decade, several additional observational studies have investigated bone mineral density and metabolism in CP patients[7,8,24,25,27-31,33,34], and therefore, provide a unique opportunity to further investigate the evidence in this clinical domain. Hence, we appraised all the available literature, including the most recent publications, in an effort to contribute evidence for future by also uniquely quantifying fragility fractures which are significant complications of CP-related bone disease.

The current systematic review is powered by high-quality studies with large sample size and clearly defined study population and outcome measures. In addition, strengths of the study include a clearly articulated *a priori* analysis plan, a thorough search strategy and a conservative analysis. However, our study is limited by variability in the CP definitions from centers worldwide and spanning over 2

**A****B**

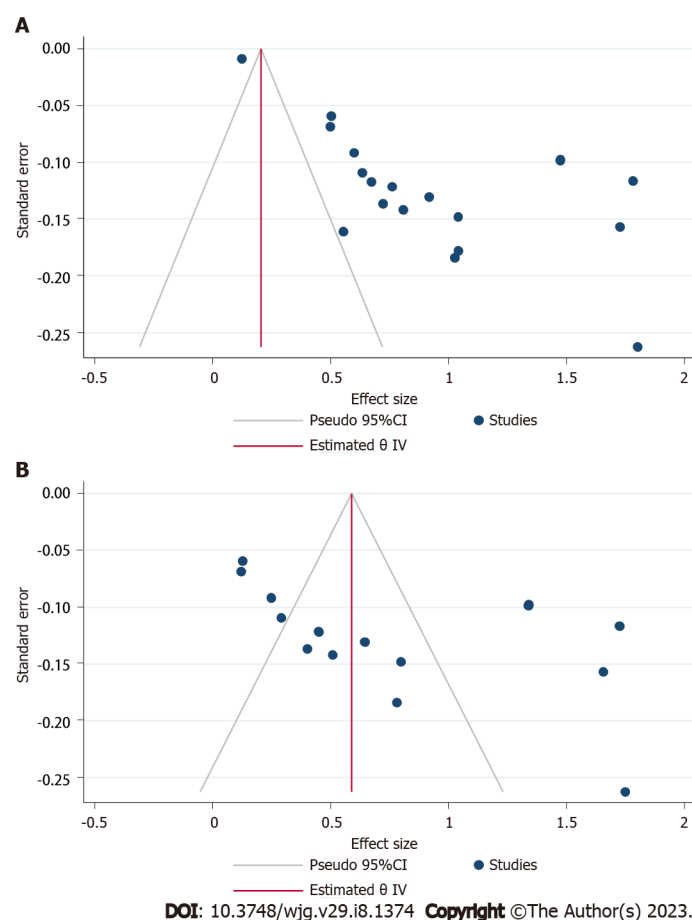


**Figure 2 Forest plot demonstrating pooled prevalence of bone disease in chronic pancreatitis.** A: Forest plot demonstrating pooled prevalence of osteopenia in chronic pancreatitis (CP); B: Forest plot demonstrating pooled prevalence of osteoporosis in CP; C: Forest plot demonstrating pooled prevalence of fragility fractures in CP. ES: Effect size; N: Total chronic pancreatitis population.

decades. Besides inconsistencies in definitions, high heterogeneity in the effect sizes is evident from  $I^2$  mandated performance of metaregression and sensitivity analysis. The heterogeneity was not attributable to any specific study as demonstrated by sensitivity analysis. We observed significant association of osteoporosis with patients with PERT use on metaregression analysis. Although PERT use signifies severe disease, this association doesn't not establish causality and this in conjunction with limited information on the dosage of PERT or nutritional outcomes prevent substantial inferences to be drawn from this association[41]. We acknowledge significant publication bias, and a priori exclusion of studies in foreign language and conference abstracts[42]. These limitations prevent making categorical recommendations to patients.

Various mechanisms have been hypothesized to cause CP-mediated bone disease. Risk factors for CP such as cigarette smoking and alcohol exposure have been proven to alter the PTH-vitamin D axis and gonadal hormones and cause oxidative stress[39,43-46]. This clinical entity is also hypothesized to be driven by RANK ligand-induced osteoclastogenesis typically stimulated by inflammation-mediated nuclear factor-kappa B ligand[47]. Prior studies have also evaluated the relation of CP with inflammatory markers, such as IL-6, IL-1, and tumor necrosis factor-alpha[48]. Protein malnutrition lowers bone mass whereas deficiency of fat-soluble vitamins contributes to defects in mineralization and thus causes osteoporosis and resultant stress fracture[49,50]. CP is also characterized by low skeletal muscle, weight loss, and low mobility, all of which negatively impacts bone mass[51-53].

CP-related bone disease warrants further investigation to answer a few clinical queries. While CP patients are at risk, the impact of disease severity and duration on bone outcomes are unknown. Additionally, poor correlation between clinical symptomatology, severity and imaging findings in CP patients presents challenges for research[54]. We also systematically assessed various confounders including baseline clinical features and impact of bone turnover and inflammatory markers, albeit our results were unremarkable. The evidence on calcium supplements, hormone levels and outdoor activity among included studies was lacking. The studies that investigated mechanisms of systemic inflammation, bone turn over and malabsorption were underpowered, whereas those pertaining to vitamin D had conflicted evidence[17,18,21,22,27-30,32]. Among this at-risk group, efficacy of preventative therapy for osteoporotic fracture, drug interactions, and adverse effect also remain elusive.



**Figure 3** Funnel plots showing the publication bias assessment in studies describing patients with osteopenia and osteoporosis. A: Osteopenia ( $Z = 2.9$ ,  $P = 0.003$ ); B: Osteoporosis ( $Z = 4.7$ ,  $P < 0.001$ ).

## CONCLUSION

In summary, this meta-analysis confirms significant bone disease in patients with CP. We observed significant association of PERT with CP related osteoporosis. Our study calls for improved methodology dedicated at delineation of confounders and studies targeting identification of at-risk CP patients, deeper understanding of mechanisms of CP related bone disease and their implications of treatment response. Fragility fractures are an important consequence of bone disease, which we have found to be increased in patients with CP. Screening strategies in this at-risk population with CP are needed as well as evaluating quality of life due to consequences of bone disease.

## ARTICLE HIGHLIGHTS

### Research background

Chronic pancreatitis (CP) is a multifactorial fibro-inflammatory syndrome is characterized by nutritional deficiencies, systemic inflammation, and etiological factors like alcohol or smoking may disrupt the balance between bone formation and resorption. These maladaptive alterations may cause osteopenia and osteoporosis, resulting in fragility fractures which result from low energy trauma and have significant implications on quality of life.

### Research motivation

Multiple large-sized studies on CP patients including those from multicenter cohorts have investigated the burden of bone disease in CP as well as their association with nutritional, anthropometric, and inflammatory parameters. Thus, with quantitative data on covariates and fragility fractures available, a synthesis of evidence is pertinent.

### Research objectives

This systematic review and meta-analysis sought to quantify the prevalence of osteopenia, osteoporosis,

and fragility fractures in CP patients and delineate clinical parameters which impact their occurrence.

### Research methods

The study included systematic review and then metaanalysis of studies describing bone disease in CP patients. A preregistered systematic search enabled identification of original studies from Cochrane Library, Embase, Google Scholar, Ovid Medline, PubMed, Scopus, and Web of Science, from inception until October 2022. The metaanalysis was performed using random effect model and the outcomes of interest included prevalence of osteopenia, osteoporosis, and fragility fractures. To assess the association of these outcomes with covariates metaregression using random effect model was performed.

### Research results

Twenty-one studies were included for systematic review and 18 studies were included for meta-analysis. The pooled prevalence of osteopenia and osteoporosis in CP patients was 41.2% (95%CI: 35.2%-47.3%) and 20.9% (95%CI: 14.9%-27.6%), respectively. The pooled prevalence of fragility fractures described among CP was 5.9% (95%CI: 3.9%-8.4%). Meta-regression showed no associations of bone outcomes in CP patients with mean age, sex distribution, body mass index, alcohol or smoking exposure, diabetes, serum parathyroid levels, and vitamin D deficiency with prevalence of osteopenia, osteoporosis or fragility fractures. A significant association of pancreatic enzyme replacement therapy use with prevalence of osteoporosis [coefficient: 1.7 (95%CI: 0.6-2.8);  $P < 0.0001$ ]. Due to sparse data on systemic inflammation, CP severity, and bone mineralization parameters a formal meta-analysis was not feasible.

### Research conclusions

This meta-analysis confirms significant bone disease: Osteopenia, osteoporosis, and fragility fractures in CP patients. Although pancreatic enzyme use had significant association with osteoporosis, the link between osteopathy and various patient or study-specific factors remains unclear. Further investigation is needed for delineation of at-risk population, to understand the mechanisms of CP-related bone disease, and assess the therapeutic response to treatment modalities.

### Research perspectives

Our study calls for dedicated studies targeting delineation of confounders and identification of at-risk features in CP patients. There is also a knowledge gap in therapeutic response among CP patients with bone disease.

## FOOTNOTES

**Author contributions:** Sheth SG and Chhoda A contributed to the study conception; Chhoda A, Addo NAA, and Hernandez-Woodbine MJ contributed to the study selection; Chhoda A and Hernandez-Woodbine MJ contributed to the data acquisition, analysis, and manuscript drafting; Grimshaw A contributed to the study accrual; Gunderson C contributed to the statistical supervision; Chhoda A and Nasir SA contributed to the study quality assessment; Ahmed A, Freedman SD, and Sheth SG contributed to the manuscript edition.

**Conflict-of-interest statement:** All the authors have no personal, financial or professional conflict of interest disclosures to declare.

**PRISMA 2009 Checklist statement:** The authors have read PRISMA checklist and revised according to PRISMA checklist.

**Open-Access:** This article is an open-access article that was selected by an in-house editor and fully peer-reviewed by external reviewers. It is distributed in accordance with the Creative Commons Attribution NonCommercial (CC BY-NC 4.0) license, which permits others to distribute, remix, adapt, build upon this work non-commercially, and license their derivative works on different terms, provided the original work is properly cited and the use is non-commercial. See: <https://creativecommons.org/licenses/by-nc/4.0/>

**Country/Territory of origin:** United States

**ORCID number:** Ankit Chhoda 0000-0002-6232-0590; Maria Jose Hernandez-Woodbine 0000-0002-1481-617X; Alyssa Grimshaw 0000-0003-3985-0056; Steven D. Freedman 0000-0003-1255-9701; Sunil G. Sheth 0000-0003-0602-8509.

**S-Editor:** Zhang H

**L-Editor:** A

**P-Editor:** Zhang H



## REFERENCES

- 1 Beyer G, Habtezion A, Werner J, Lerch MM, Mayerle J. Chronic pancreatitis. *Lancet* 2020; **396**: 499-512 [PMID: 32798493 DOI: 10.1016/S0140-6736]
- 2 Ahmed A, Deep A, Kothari DJ, Sheth SG. Bone disease in chronic pancreatitis. *World J Clin Cases* 2020; **8**: 1574-1579 [PMID: 32432135 DOI: 10.12998/wjcc.v8.i9.1574]
- 3 Veronese N, Kolk H, Maggi S. Epidemiology of Fragility Fractures and Social Impact. 2020 Aug 21. In: Falaschi P, Marsh D. Orthogeriatrics: The Management of Older Patients with Fragility Fractures [Internet]. 2nd ed. Cham (CH): Springer; 2021 [PMID: 33347224]
- 4 Burge R, Dawson-Hughes B, Solomon DH, Wong JB, King A, Tosteson A. Incidence and economic burden of osteoporosis-related fractures in the United States, 2005-2025. *J Bone Miner Res* 2007; **22**: 465-475 [PMID: 17144789 DOI: 10.1359/jbmr.061113]
- 5 Löhr JM, Dominguez-Munoz E, Rosendahl J, Besselink M, Mayerle J, Lerch MM, Haas S, Akisik F, Kartalis N, Iglesias-Garcia J, Keller J, Boermeester M, Werner J, Dumonceau JM, Fockens P, Drewes A, Ceyhan G, Lindkvist B, Drenth J, Ewald N, Hardt P, de Madaria E, Witt H, Schneider A, Manfredi R, Brøndum FJ, Rudolf S, Bollen T, Bruno M; HaPanEU/UEG Working Group. United European Gastroenterology evidence-based guidelines for the diagnosis and therapy of chronic pancreatitis (HaPanEU). *United European Gastroenterol J* 2017; **5**: 153-199 [PMID: 28344786 DOI: 10.1177/2050640616684695]
- 6 Gardner TB, Adler DG, Forsmark CE, Sauer BG, Taylor JR, Whitcomb DC. ACG Clinical Guideline: Chronic Pancreatitis. *Am J Gastroenterol* 2020; **115**: 322-339 [PMID: 32022720 DOI: 10.14309/ajg.0000000000000535]
- 7 Kanakis A, Vipplerla K, Papachristou GI, Brand RE, Slivka A, Whitcomb DC, Yadav D. Bone health assessment in clinical practice is infrequently performed in patients with chronic pancreatitis. *Pancreatol* 2020; **20**: 1109-1114 [PMID: 32826169 DOI: 10.1016/j.pan.2020.07.396]
- 8 Vujasinovic M, Nezirevic Dobrijevic L, Asplund E, Rutkowski W, Dugic A, Kahn M, Dahlman I, Sääf M, Hagström H, Löhr JM. Low Bone Mineral Density and Risk for Osteoporotic Fractures in Patients with Chronic Pancreatitis. *Nutrients* 2021; **13** [PMID: 34371899 DOI: 10.3390/nu13072386]
- 9 Duggan SN, Smyth ND, Murphy A, Macnaughton D, O'Keefe SJ, Conlon KC. High prevalence of osteoporosis in patients with chronic pancreatitis: a systematic review and meta-analysis. *Clin Gastroenterol Hepatol* 2014; **12**: 219-228 [PMID: 23856359 DOI: 10.1016/j.cgh.2013.06.016]
- 10 Page MJ, McKenzie JE, Bossuyt PM, Boutron I, Hoffmann TC, Mulrow CD, Shamseer L, Tetzlaff JM, Akl EA, Brennan SE, Chou R, Glanville J, Grimshaw JM, Hróbjartsson A, Lalu MM, Li T, Loder EW, Mayo-Wilson E, McDonald S, McGuinness LA, Stewart LA, Thomas J, Tricco AC, Welch VA, Whiting P, Moher D. The PRISMA 2020 statement: an updated guideline for reporting systematic reviews. *Rev Esp Cardiol (Engl Ed)* 2021; **74**: 790-799 [PMID: 34446261 DOI: 10.1016/j.rec.2021.07.010]
- 11 Chhoda A, Woodbine MJH. Bone outcomes in patients with chronic pancreatitis. [cited 8 November 2022]. Available from: <https://osf.io/fgvqk/>
- 12 McGowan J, Sampson M, Salzwedel DM, Cogo E, Foerster V, Lefebvre C. PRESS Peer Review of Electronic Search Strategies: 2015 Guideline Statement. *J Clin Epidemiol* 2016; **75**: 40-46 [PMID: 27005575 DOI: 10.1016/j.jclinepi.2016.01.021]
- 13 Nyaga VN, Arbyn M, Aerts M. Metaprop: a Stata command to perform meta-analysis of binomial data. *Arch Public Health* 2014; **72**: 39 [PMID: 25810908 DOI: 10.1186/2049-3258-72-39]
- 14 Higgins JP, Thomas J, Chandler J, Cumpston M, Li T, Page MJ, Welch VA. Cochrane handbook for systematic reviews of interventions. New York: John Wiley & Sons, 2019
- 15 Wells GA, Wells G, Shea B, O'Connell D, Peterson J, Welch, Losos M, Tugwell P, Ga SW, Zello GA, Petersen JA. The Newcastle-Ottawa Scale (NOS) for Assessing the Quality of Nonrandomised Studies in Meta-Analyses. 2014
- 16 Egger M, Davey Smith G, Schneider M, Minder C. Bias in meta-analysis detected by a simple, graphical test. *BMJ* 1997; **315**: 629-634 [PMID: 9310563 DOI: 10.1136/bmj.315.7109.629]
- 17 Morán CE, Sosa EG, Martínez SM, Geldern P, Messina D, Russo A, Boerr L, Bai JC. Bone mineral density in patients with pancreatic insufficiency and steatorrhea. *Am J Gastroenterol* 1997; **92**: 867-871 [PMID: 9149203]
- 18 Haaber AB, Rosenfalck AM, Hansen B, Hilsted J, Larsen S. Bone mineral metabolism, bone mineral density, and body composition in patients with chronic pancreatitis and pancreatic exocrine insufficiency. *Int J Pancreatol* 2000; **27**: 21-27 [PMID: 10811020 DOI: 10.1385/IJGC:27:1:21]
- 19 Dujiskova H, Dite P, Tomandl J, Sevcikova A, Precechtelova M. Occurrence of metabolic osteopathy in patients with chronic pancreatitis. *Pancreatol* 2008; **8**: 583-586 [PMID: 18824882 DOI: 10.1159/000159845]
- 20 Tignor AS, Wu BU, Whitlock TL, Lopez R, Repas K, Banks PA, Conwell D. High prevalence of low-trauma fracture in chronic pancreatitis. *Am J Gastroenterol* 2010; **105**: 2680-2686 [PMID: 20736937 DOI: 10.1038/ajg.2010.325]
- 21 Joshi A, Reddy SV, Bhatia V, Choudhuri G, Singh RK, Singh N, Bhatia E. High prevalence of low bone mineral density in patients with tropical calcific pancreatitis. *Pancreas* 2011; **40**: 762-767 [PMID: 21441842 DOI: 10.1097/MPA.0b013e31821396b2]
- 22 Sudeep K, Chacko A, Thomas N, Selvakumar R, George B, Paul TV, Seshadri MS. Predictors of osteodystrophy in patients with chronic nonalcoholic pancreatitis with or without diabetes. *Endocr Pract* 2011; **17**: 897-905 [PMID: 21742614 DOI: 10.4158/EP10410.0R]
- 23 Duggan SN, O'Sullivan M, Hamilton S, Feehan SM, Ridgway PF, Conlon KC. Patients with chronic pancreatitis are at increased risk for osteoporosis. *Pancreas* 2012; **41**: 1119-1124 [PMID: 22836855 DOI: 10.1097/MPA.0b013e31824abb4d]
- 24 Munigala S, Agarwal B, Gelrud A, Conwell DL. Chronic Pancreatitis and Fracture: A Retrospective, Population-Based Veterans Administration Study. *Pancreas* 2016; **45**: 355-361 [PMID: 26199986 DOI: 10.1097/MPA.0000000000000381]
- 25 Sikkens EC, Cahen DL, Koch AD, Braat H, Poley JW, Kuipers EJ, Bruno MJ. The prevalence of fat-soluble vitamin deficiencies and a decreased bone mass in patients with chronic pancreatitis. *Pancreatol* 2013; **13**: 238-242 [PMID: 23826169 DOI: 10.1016/j.pan.2020.07.396]



- 23719594 DOI: [10.1016/j.pan.2013.02.008](https://doi.org/10.1016/j.pan.2013.02.008)]
- 26 **Bang UC**, Benfield T, Bendtsen F, Hyldstrup L, Beck Jensen JE. The risk of fractures among patients with cirrhosis or chronic pancreatitis. *Clin Gastroenterol Hepatol* 2014; **12**: 320-326 [PMID: [23644391](https://pubmed.ncbi.nlm.nih.gov/23644391/) DOI: [10.1016/j.cgh.2013.04.031](https://doi.org/10.1016/j.cgh.2013.04.031)]
  - 27 **Duggan SN**, Purcell C, Kilbane M, O'Keane M, McKenna M, Gaffney P, Ridgway PF, Boran G, Conlon KC. An association between abnormal bone turnover, systemic inflammation, and osteoporosis in patients with chronic pancreatitis: a case-matched study. *Am J Gastroenterol* 2015; **110**: 336-345 [PMID: [25623657](https://pubmed.ncbi.nlm.nih.gov/25623657/) DOI: [10.1038/ajg.2014.430](https://doi.org/10.1038/ajg.2014.430)]
  - 28 **Prabhakaran A**, Bhasin DK, Rana SS, Bhadada SK, Bhansali A, Rao C, Gupta R, Khandelwal N. Bone mineral metabolism and bone mineral density in alcohol related and idiopathic chronic pancreatitis. *Trop Gastroenterol* 2014; **35**: 107-112 [PMID: [25470873](https://pubmed.ncbi.nlm.nih.gov/25470873/) DOI: [10.7869/tg.189](https://doi.org/10.7869/tg.189)]
  - 29 **Kumar KH**, Sood AK, Manrai M. Occult metabolic bone disease in chronic pancreatitis. *Niger J Clin Pract* 2017; **20**: 1122-1126 [PMID: [29072234](https://pubmed.ncbi.nlm.nih.gov/29072234/) DOI: [10.4103/njcp.njcp\\_42\\_17](https://doi.org/10.4103/njcp.njcp_42_17)]
  - 30 **Kuhlmann L**, Poulsen JL, Kohler M, Rasmussen HH, Vestergaard P, Drewes AM, Olesen SS. Osteoporosis in Chronic Pancreatitis Outpatients Associates with Several Risk Factors. *J Pancreas* 2018; **19**: 183-189 [DOI: [10.1016/j.pan.2017.05.184](https://doi.org/10.1016/j.pan.2017.05.184)]
  - 31 **Min M**, Patel B, Han S, Bocelli L, Kheder J, Vaze A, Wassef W. Exocrine Pancreatic Insufficiency and Malnutrition in Chronic Pancreatitis: Identification, Treatment, and Consequences. *Pancreas* 2018; **47**: 1015-1018 [PMID: [30074926](https://pubmed.ncbi.nlm.nih.gov/30074926/) DOI: [10.1097/MPA.0000000000001137](https://doi.org/10.1097/MPA.0000000000001137)]
  - 32 **Stigliano S**, Waldthaler A, Martinez-Moneo E, Lionetto L, Robinson S, Malvik M, Hedstrom A, Kaczka A, Scholdei M, Haas S, Simmaco M, Delle Fave G, Lohr M, Simon P, Capurso G. Vitamins D and K as Factors Associated with Osteopathy in Chronic Pancreatitis: A Prospective Multicentre Study (P-BONE Study). *Clin Transl Gastroenterol* 2018; **9**: 197 [PMID: [30323223](https://pubmed.ncbi.nlm.nih.gov/30323223/) DOI: [10.1038/s41424-018-0066-8](https://doi.org/10.1038/s41424-018-0066-8)]
  - 33 **Gupta N**, Singh S, Vargas L, Moore TE, Shostrom VK, Boerner BP. Prevalence of Low Bone Density and Comorbid Hypogonadism in Patients With Chronic Pancreatitis. *Pancreas* 2019; **48**: 387-395 [PMID: [30768576](https://pubmed.ncbi.nlm.nih.gov/30768576/) DOI: [10.1097/MPA.0000000000001257](https://doi.org/10.1097/MPA.0000000000001257)]
  - 34 **Hart PA**, Yadav D, Li L, Appana S, Fisher W, Fogel E, Forsmark CE, Park WG, Pandol S, Topazian MD, Van Den Eden SK, Vege SS, Bradley D, Serrano J, Conwell DL; Consortium for the Study of Chronic Pancreatitis, Diabetes, and Pancreatic Cancer (CPDPC). High Prevalence of Osteopathy in Chronic Pancreatitis: A Cross-sectional Analysis From the PROCEED Study. *Clin Gastroenterol Hepatol* 2022; **20**: 2005-2013 [PMID: [34571258](https://pubmed.ncbi.nlm.nih.gov/34571258/) DOI: [10.1016/j.cgh.2021.09.026](https://doi.org/10.1016/j.cgh.2021.09.026)]
  - 35 **Tang XY**, Ru N, Li Q, Qian YY, Sun H, Zhu JH, He L, Wang YC, Hu LH, Li ZS, Zou WB, Liao Z. Prevalence and Risk Factors for Osteopathy in Chronic Pancreatitis. *Dig Dis Sci* 2021; **66**: 4008-4016 [PMID: [33433813](https://pubmed.ncbi.nlm.nih.gov/33433813/) DOI: [10.1007/s10620-020-06732-2](https://doi.org/10.1007/s10620-020-06732-2)]
  - 36 **Humadi A**, Alhadithi RH, Alkudiyari SI. Validity of the DEXA diagnosis of involutional osteoporosis in patients with femoral neck fractures. *Indian J Orthop* 2010; **44**: 73-78 [PMID: [20165680](https://pubmed.ncbi.nlm.nih.gov/20165680/) DOI: [10.4103/0019-5413.58609](https://doi.org/10.4103/0019-5413.58609)]
  - 37 **Machicado JD**, Amann ST, Anderson MA, Abberbock J, Sherman S, Conwell DL, Cote GA, Singh VK, Lewis MD, Alkaade S, Sandhu BS, Guda NM, Muniraj T, Tang G, Baillie J, Brand RE, Gardner TB, Gelrud A, Forsmark CE, Banks PA, Slivka A, Wilcox CM, Whitcomb DC, Yadav D. Quality of Life in Chronic Pancreatitis is Determined by Constant Pain, Disability/Unemployment, Current Smoking, and Associated Co-Morbidities. *Am J Gastroenterol* 2017; **112**: 633-642 [PMID: [28244497](https://pubmed.ncbi.nlm.nih.gov/28244497/) DOI: [10.1038/ajg.2017.42](https://doi.org/10.1038/ajg.2017.42)]
  - 38 **Borhan S**, Papaioannou A, Gajic-Veljanoski O, Kennedy C, Ioannidis G, Berger C, Goltzman D, Josse R, Kovacs CS, Hanley DA, Prior JC, Morin SN, Kaiser SM, Cheung AM, Thabane L, Adachi J; CaMos Research Group. Incident Fragility Fractures Have a Long-Term Negative Impact on Health-Related Quality of Life of Older People: The Canadian Multicentre Osteoporosis Study. *J Bone Miner Res* 2019; **34**: 838-848 [PMID: [30723960](https://pubmed.ncbi.nlm.nih.gov/30723960/) DOI: [10.1002/jbmr.3666](https://doi.org/10.1002/jbmr.3666)]
  - 39 **Schnitzler CM**, Mesquita JM, Shires R. Cortical and trabecular bone microarchitecture and turnover in alcohol-induced chronic pancreatitis: a histomorphometric study. *J Bone Miner Metab* 2010; **28**: 456-467 [PMID: [20101423](https://pubmed.ncbi.nlm.nih.gov/20101423/) DOI: [10.1007/s00774-009-0151-x](https://doi.org/10.1007/s00774-009-0151-x)]
  - 40 **Rasmussen HH**, Irtun O, Olesen SS, Drewes AM, Holst M. Nutrition in chronic pancreatitis. *World J Gastroenterol* 2013; **19**: 7267-7275 [PMID: [24259957](https://pubmed.ncbi.nlm.nih.gov/24259957/) DOI: [10.3748/wjg.v19.i42.7267](https://doi.org/10.3748/wjg.v19.i42.7267)]
  - 41 **Thompson SG**, Higgins JP. How should meta-regression analyses be undertaken and interpreted? *Stat Med* 2002; **21**: 1559-1573 [PMID: [12111920](https://pubmed.ncbi.nlm.nih.gov/12111920/) DOI: [10.1002/sim.1187](https://doi.org/10.1002/sim.1187)]
  - 42 **Scherer RW**, Saldanha IJ. How should systematic reviewers handle conference abstracts? *Syst Rev* 2019; **8**: 264 [PMID: [31699124](https://pubmed.ncbi.nlm.nih.gov/31699124/) DOI: [10.1186/s13643-019-1188-0](https://doi.org/10.1186/s13643-019-1188-0)]
  - 43 **Segal SJ**, Burgos M, Lyttle CR. Progesterone-dependent messenger RNA: identification of the products of heterospecific activity in vivo. *Ann N Y Acad Sci* 1977; **286**: 125-134 [PMID: [281169](https://pubmed.ncbi.nlm.nih.gov/281169/) DOI: [10.1111/j.1749-6632.1977.tb29411.x](https://doi.org/10.1111/j.1749-6632.1977.tb29411.x)]
  - 44 **Al-Bashaireh AM**, Haddad LG, Weaver M, Chengguo X, Kelly DL, Yoon S. The Effect of Tobacco Smoking on Bone Mass: An Overview of Pathophysiologic Mechanisms. *J Osteoporos* 2018; **2018**: 1206235 [PMID: [30631414](https://pubmed.ncbi.nlm.nih.gov/30631414/) DOI: [10.1155/2018/1206235](https://doi.org/10.1155/2018/1206235)]
  - 45 **Godos J**, Giampieri F, Chisari E, Micek A, Paladino N, Forbes-Hernández TY, Quiles JL, Battino M, La Vignera S, Musumeci G, Grosso G. Alcohol Consumption, Bone Mineral Density, and Risk of Osteoporotic Fractures: A Dose-Response Meta-Analysis. *Int J Environ Res Public Health* 2022; **19** [PMID: [35162537](https://pubmed.ncbi.nlm.nih.gov/35162537/) DOI: [10.3390/ijerph19031515](https://doi.org/10.3390/ijerph19031515)]
  - 46 **Cheraghi Z**, Doosti-Irani A, Almasi-Hashiani A, Baigi V, Mansournia N, Etminan M, Mansournia MA. The effect of alcohol on osteoporosis: A systematic review and meta-analysis. *Drug Alcohol Depend* 2019; **197**: 197-202 [PMID: [30844616](https://pubmed.ncbi.nlm.nih.gov/30844616/) DOI: [10.1016/j.drugalcdep.2019.01.025](https://doi.org/10.1016/j.drugalcdep.2019.01.025)]
  - 47 **Abu-Amer Y**. NF- $\kappa$ B signaling and bone resorption. *Osteoporos Int* 2013; **24**: 2377-2386 [PMID: [23468073](https://pubmed.ncbi.nlm.nih.gov/23468073/) DOI: [10.1007/s00198-013-2313-x](https://doi.org/10.1007/s00198-013-2313-x)]
  - 48 **Komar HM**, Hart PA, Cruz-Monserrate Z, Conwell DL, Lesinski GB. Local and Systemic Expression of Immunomodulatory Factors in Chronic Pancreatitis. *Pancreas* 2017; **46**: 986-993 [PMID: [28796136](https://pubmed.ncbi.nlm.nih.gov/28796136/) DOI: [10.1097/MPA.0000000000000896](https://doi.org/10.1097/MPA.0000000000000896)]
  - 49 **Haas S**, Krins S, Knauerhase A, Löhr M. Altered bone metabolism and bone density in patients with chronic pancreatitis and pancreatic exocrine insufficiency. *JOP* 2015; **16**: 58-62 [PMID: [25640785](https://pubmed.ncbi.nlm.nih.gov/25640785/) DOI: [10.6092/1590-8577/2898](https://doi.org/10.6092/1590-8577/2898)]

- 50 **Martínez-Moneo E**, Stigliano S, Hedström A, Kaczka A, Malvik M, Waldthaler A, Maisonneuve P, Simon P, Capurso G. Deficiency of fat-soluble vitamins in chronic pancreatitis: A systematic review and meta-analysis. *Pancreatology* 2016; **16**: 988-994 [PMID: [27681502](#) DOI: [10.1016/j.pan.2016.09.008](#)]
- 51 **Wiese ML**, Gärtner S, von Essen N, Doller J, Frost F, Tran QT, Weiss FU, Meyer F, Valentini L, Garbe LA, Metges CC, Bannert K, Sautter LF, Ehlers L, Jaster R, Lamprecht G, Steveling A, Lerch MM, Aghdassi AA. Malnutrition Is Highly Prevalent in Patients With Chronic Pancreatitis and Characterized by Loss of Skeletal Muscle Mass but Absence of Impaired Physical Function. *Front Nutr* 2022; **9**: 889489 [PMID: [35719155](#) DOI: [10.3389/fnut.2022.889489](#)]
- 52 **Olesen SS**, Frandsen LK, Poulsen JL, Vestergaard P, Rasmussen HH, Drewes AM. The prevalence of underweight is increased in chronic pancreatitis outpatients and associates with reduced life quality. *Nutrition* 2017; **43-44**: 1-7 [PMID: [28935139](#) DOI: [10.1016/j.nut.2017.06.019](#)]
- 53 **Asomaning K**, Bertone-Johnson ER, Nasca PC, Hooven F, Pekow PS. The association between body mass index and osteoporosis in patients referred for a bone mineral density examination. *J Womens Health (Larchmt)* 2006; **15**: 1028-1034 [PMID: [17125421](#) DOI: [10.1089/jwh.2006.15.1028](#)]
- 54 **Wilcox CM**, Yadav D, Ye T, Gardner TB, Gelrud A, Sandhu BS, Lewis MD, Al-Kaade S, Cote GA, Forsmark CE, Guda NM, Conwell DL, Banks PA, Muniraj T, Romagnuolo J, Brand RE, Slivka A, Sherman S, Wisniewski SR, Whitcomb DC, Anderson MA. Chronic pancreatitis pain pattern and severity are independent of abdominal imaging findings. *Clin Gastroenterol Hepatol* 2015; **13**: 552-60; quiz e28 [PMID: [25424572](#) DOI: [10.1016/j.cgh.2014.10.015](#)]



Published by **Baishideng Publishing Group Inc**  
7041 Koll Center Parkway, Suite 160, Pleasanton, CA 94566, USA

**Telephone:** +1-925-3991568

**E-mail:** [bpgoffice@wjgnet.com](mailto:bpgoffice@wjgnet.com)

**Help Desk:** <https://www.f6publishing.com/helpdesk>

<https://www.wjgnet.com>

