

World Journal of *Clinical Cases*

World J Clin Cases 2023 April 16; 11(11): 2363-2581



Contents

Thrice Monthly Volume 11 Number 11 April 16, 2023

REVIEW

- 2363 Presbyphagia: Dysphagia in the elderly
Feng HY, Zhang PP, Wang XW

MINIREVIEWS

- 2374 Narrative minireview of the spatial epidemiology of substance use disorder in the United States: Who is at risk and where?
Cuadros DF, Branscum AJ, Moreno CM, MacKinnon NJ
- 2386 Pyroptosis and its role in cancer
Liu SW, Song WJ, Ma GK, Wang H, Yang L
- 2396 Platelet rich fibrin is not a barrier membrane! Or is it?
Agrawal AA
- 2405 Advances in translational therapy for locally advanced gastric cancer
Zhao K, Na Y, Xu HM

ORIGINAL ARTICLE

Retrospective Study

- 2412 Study of pathogenic genes in a pedigree with familial dilated cardiomyopathy
Zhang XR, Ren H, Yao F, Liu Y, Song CL
- 2423 Classification of hepatobiliary scintigraphy patterns in segmented gallbladder according to anatomical discordance
Lee YC, Jung WS, Lee CH, Kim SH, Lee SO
- 2435 Optimal laboratory testing protocol for patients with acne taking oral isotretinoin
Park YJ, Shin HY, Choi WK, Lee AY, Lee SH, Hong JS

Observational Study

- 2443 Etiology analysis for term newborns with severe hyperbilirubinemia in eastern Guangdong of China
Xu JX, Lin F, Wu YH, Chen ZK, Ma YB, Yang LY

CASE REPORT

- 2452 Aicardi-Goutières syndrome type 7 in a Chinese child: A case report
Lin SZ, Yang JJ, Xie TL, Li JY, Ma JQ, Wu S, Wang N, Wang YJ

- 2457** Allergic bronchopulmonary aspergillosis with marked peripheral blood eosinophilia and pulmonary eosinophilia: A case report
Zhang XX, Zhou R, Liu C, Yang J, Pan ZH, Wu CC, Li QY
- 2464** Late presentation of dural tears: Two case reports and review of literature
Xu C, Dong RP, Cheng XL, Zhao JW
- 2474** Difficult-to-treat rheumatoid arthritis treated with Abatacept combined with Baricitinib: A case report
Qi JP, Jiang H, Wu T, Zhang Y, Huang W, Li YX, Wang J, Zhang J, Ying ZH
- 2482** Anesthesia management in a pediatric patient with complicatedly difficult airway: A case report
Chen JX, Shi XL, Liang CS, Ma XG, Xu L
- 2489** Intracranial large artery embolism due to carotid thrombosis caused by a neck massager: A case report
Pan J, Wang JW, Cai XF, Lu KF, Wang ZZ, Guo SY
- 2496** Intraductal papillary mucinous neoplasm originating from a jejunal heterotopic pancreas: A case report
Huang JH, Guo W, Liu Z
- 2502** Application of endoscopic retrograde cholangiopancreatography for treatment of obstructive jaundice after hepatoblastoma surgery: A case report
Shu J, Yang H, Yang J, Bian HQ, Wang X
- 2510** Total removal of a large esophageal schwannoma by submucosal tunneling endoscopic resection: A case report and review of literature
Mu YZ, Zhang Q, Zhao J, Liu Y, Kong LW, Ding ZX
- 2521** SMARCA4-deficient undifferentiated thoracic tumor: A case report
Kwon HJ, Jang MH
- 2528** Prostate-specific antigen reduction after capecitabine plus oxaliplatin chemotherapy: A case report
Zou Q, Shen RL, Guo X, Tang CY
- 2535** Bilateral carpal tunnel syndrome and motor dysfunction caused by gout and type 2 diabetes: A case report
Zhang GF, Rong CM, Li W, Wei BL, Han MT, Han QL
- 2541** Pregnancy complicated by juxtaglomerular cell tumor of the kidney: A case report
Fu X, Deng G, Wang K, Shao C, Xie LP
- 2549** Successful treatment of lichen amyloidosis coexisting with atopic dermatitis by dupilumab: Four case reports
Zhu Q, Gao BQ, Zhang JF, Shi LP, Zhang GQ
- 2559** Successful treatment of breast metastasis from primary transverse colon cancer: A case report
Jiao X, Xing FZ, Zhai MM, Sun P

- 2567** Different endodontic treatments induced root development of two nonvital immature teeth in the same patient: A case report
Chai R, Yang X, Zhang AS
- 2576** Autoimmune encephalitis after surgery for appendiceal cancer: A case report
Mao YH, Li L, Wen LM, Qin JM, Yang YL, Wang L, Wang FR, Zhao YZ

ABOUT COVER

Editorial Board Member of *World Journal of Clinical Cases*, Farooq Shahzad, FACS, MBBS, MS, Assistant Professor, Plastic Surgery Service, Department of Surgery, Memorial Sloan-Kettering Cancer Center, New York, NY 10065, United States. fooqs@hotmail.com

AIMS AND SCOPE

The primary aim of *World Journal of Clinical Cases* (WJCC, *World J Clin Cases*) is to provide scholars and readers from various fields of clinical medicine with a platform to publish high-quality clinical research articles and communicate their research findings online.

WJCC mainly publishes articles reporting research results and findings obtained in the field of clinical medicine and covering a wide range of topics, including case control studies, retrospective cohort studies, retrospective studies, clinical trials studies, observational studies, prospective studies, randomized controlled trials, randomized clinical trials, systematic reviews, meta-analysis, and case reports.

INDEXING/ABSTRACTING

The WJCC is now abstracted and indexed in Science Citation Index Expanded (SCIE, also known as SciSearch®), Journal Citation Reports/Science Edition, Current Contents®/Clinical Medicine, PubMed, PubMed Central, Scopus, Reference Citation Analysis, China National Knowledge Infrastructure, China Science and Technology Journal Database, and Superstar Journals Database. The 2022 Edition of Journal Citation Reports® cites the 2021 impact factor (IF) for WJCC as 1.534; IF without journal self cites: 1.491; 5-year IF: 1.599; Journal Citation Indicator: 0.28; Ranking: 135 among 172 journals in medicine, general and internal; and Quartile category: Q4. The WJCC's CiteScore for 2021 is 1.2 and Scopus CiteScore rank 2021: General Medicine is 443/826.

RESPONSIBLE EDITORS FOR THIS ISSUE

Production Editor: Hua-Ge Yin; Production Department Director: Xiang Li; Editorial Office Director: Jin-Lei Wang.

NAME OF JOURNAL

World Journal of Clinical Cases

ISSN

ISSN 2307-8960 (online)

LAUNCH DATE

April 16, 2013

FREQUENCY

Thrice Monthly

EDITORS-IN-CHIEF

Bao-Gan Peng, Jerzy Tadeusz Chudek, George Kontogeorgos, Maurizio Serati, Ja Hyeon Ku

EDITORIAL BOARD MEMBERS

<https://www.wjgnet.com/2307-8960/editorialboard.htm>

PUBLICATION DATE

April 16, 2023

COPYRIGHT

© 2023 Baishideng Publishing Group Inc

INSTRUCTIONS TO AUTHORS

<https://www.wjgnet.com/bpg/gerinfo/204>

GUIDELINES FOR ETHICS DOCUMENTS

<https://www.wjgnet.com/bpg/GerInfo/287>

GUIDELINES FOR NON-NATIVE SPEAKERS OF ENGLISH

<https://www.wjgnet.com/bpg/gerinfo/240>

PUBLICATION ETHICS

<https://www.wjgnet.com/bpg/GerInfo/288>

PUBLICATION MISCONDUCT

<https://www.wjgnet.com/bpg/gerinfo/208>

ARTICLE PROCESSING CHARGE

<https://www.wjgnet.com/bpg/gerinfo/242>

STEPS FOR SUBMITTING MANUSCRIPTS

<https://www.wjgnet.com/bpg/GerInfo/239>

ONLINE SUBMISSION

<https://www.f6publishing.com>



Narrative minireview of the spatial epidemiology of substance use disorder in the United States: Who is at risk and where?

Diego F Cuadros, Adam J Branscum, Claudia M Moreno, Neil J MacKinnon

Specialty type: Medicine, research and experimental

Provenance and peer review:

Invited article; Externally peer reviewed.

Peer-review model: Single blind

Peer-review report's scientific quality classification

Grade A (Excellent): A, A

Grade B (Very good): B

Grade C (Good): C

Grade D (Fair): 0

Grade E (Poor): 0

P-Reviewer: Long X, China; Wang T, China; Welter J, Switzerland

Received: November 28, 2022

Peer-review started: November 28, 2022

First decision: January 19, 2023

Revised: January 31, 2023

Accepted: March 20, 2023

Article in press: March 20, 2023

Published online: April 16, 2023



Diego F Cuadros, Digital Futures, University of Cincinnati, Cincinnati, OH 45206, United States

Adam J Branscum, Department of Biostatistics, Oregon State University, Corvallis, OR 97331, United States

Claudia M Moreno, Department of Physiology and Biophysics, University of Washington, Seattle, WA 98195, United States

Neil J MacKinnon, Department of Population Health Sciences, Augusta University, Augusta, GA 30912, United States

Corresponding author: Diego F Cuadros, PhD, Associate Professor, Digital Futures, University of Cincinnati, 3080 Exploration Ave, Cincinnati, OH 45206, United States.

diego.cuadros@uc.edu

Abstract

Drug overdose is the leading cause of death by injury in the United States. The incidence of substance use disorder (SUD) in the United States has increased steadily over the past two decades, becoming a major public health problem for the country. The drivers of the SUD epidemic in the United States have changed over time, characterized by an initial heroin outbreak between 1970 and 1999, followed by a painkiller outbreak, and finally by an ongoing synthetic opioid outbreak. The nature and sources of these abused substances reveal striking differences in the socioeconomic and behavioral factors that shape the drug epidemic. Moreover, the geospatial distribution of the SUD epidemic is not homogeneous. The United States has specific locations where vulnerable communities at high risk of SUD are concentrated, reaffirming the multifactorial socioeconomic nature of this epidemic. A better understanding of the SUD epidemic under a spatial epidemiology framework is necessary to determine the factors that have shaped its spread and how these patterns can be used to predict new outbreaks and create effective mitigation policies. This narrative minireview summarizes the current records of the spatial distribution of the SUD epidemic in the United States across different periods, revealing some spatiotemporal patterns that have preceded the occurrence of outbreaks. By analyzing the epidemic of SUD-related deaths, we also describe the epidemic behavior in areas with high incidence of cases. Finally, we describe public health interventions that can be effective for demographic groups, and we discuss future challenges in the study and control of the SUD epidemic in the country.

Key Words: Substance use disorder; Spatial epidemiology; Risk factors; Spatial statistics; Disease mapping

©The Author(s) 2023. Published by Baishideng Publishing Group Inc. All rights reserved.

Core Tip: A comprehensive geographical analysis of the substance use disorder (SUD) epidemic is fundamental to understanding the dynamics of the epidemic and to identifying important factors associated with the spatial dynamics of the disease. The SUD epidemic is not uniformly distributed within the United States. The epidemic is characterized by the emergence of several micro-epidemics of different intensities across demographic groups and geographical locations across the country. Micro-targeting strategies based on understanding the spatial structure and the multifactorial nature of the addiction epidemic would facilitate the design of integrated preventive strategies for substance use in vulnerable populations in the United States.

Citation: Cuadros DF, Branscum AJ, Moreno CM, MacKinnon NJ. Narrative minireview of the spatial epidemiology of substance use disorder in the United States: Who is at risk and where? *World J Clin Cases* 2023; 11(11): 2374-2385

URL: <https://www.wjgnet.com/2307-8960/full/v11/i11/2374.htm>

DOI: <https://dx.doi.org/10.12998/wjcc.v11.i11.2374>

INTRODUCTION

Substance use disorder (SUD) is a mental disorder that affects nearly 20.4 million Americans[1]. SUD is defined as the inability of a person to control their use of substances such as legal or illegal drugs or medications[2]. Among the 20.4 million people with SUD, 40.7% have illicit drug disorder. Illicit drug overdoses have increased steadily in the last three decades, claiming over 900000 lives in the United States since 1999[3]. In 2020 alone, 92000 people died from illicit drug overdose in the country. Thus, SUD has been acknowledged as one of the public health priorities in the United States. Opioids have recently been the largest contributor to SUD-related mortality in the country, accounting for about 75% of all drug overdose deaths in 2020[4]. Collectively, these finds make the study of the opioid epidemic a priority.

National data on SUD show that the epidemic is not homogenously distributed within the country. Overdose rates are highest and have increased in specific regions of the country, particularly in Appalachia, New England, Florida, eastern Kentucky, and the Southwest[5,6]. The type of substance contributing to most deaths also varies across the United States, with a large share of drug overdoses in the Northeast attributed to synthetic opioids (fentanyl), whereas heroin overdoses are most prevalent in New Mexico and the Midwest[7,8]. Several studies examining the attributes of the addiction epidemic in the United States have described significant demographic and spatial heterogeneities[9]. These heterogeneities have been partially attributed to the concomitant spatial heterogeneity that the United States exhibits for socioeconomic status, race and ethnicity, and comorbidities[9]. The reasons behind the geospatial heterogeneity of SUD incidence in the United States, however, are still not completely understood[10].

Socioeconomic status, accessibility to primary and mental health care, unemployment rate, urbanicity, and availability of substances have been proposed to be some of the main drivers of this heterogeneity[11-13]. In addition, rates of prescribing patterns and the accessibility of treatments to reverse overdose episodes (*e.g.*, naloxone) have been identified as important factors associated with the uneven spatial and demographical distributions of SUD-related mortality[14-16]. Furthermore, the epidemiological attributes of the SUD public health emergency remain understudied. There is little information about where (location) and who (demographic groups) are at higher risk of developing SUD and dying of related overdoses[17]. In this perspective, spatial statistics and geospatial epidemiological models are key tools for recognizing the temporal and geographical dynamics of the epidemic[18]. The identification of the key spatiotemporal dynamics of the SUD challenge will provide significant information to identify geographic areas where vulnerable populations are located as well as potential socioeconomic drivers of the epidemic. Geospatial statistical and spatial epidemiological models can be used to develop strategies for mitigating the SUD crisis in the most affected areas and preventing future outbreaks in vulnerable communities.

This narrative minireview aims to summarize and discuss the advances in the study of the spatial distribution of the SUD epidemic in the United States. Geospatial analyses have been foundational to the study and management of many global epidemics [*e.g.*, human immunodeficiency virus (HIV)]. However, the use of geospatial analysis to aid in the study of the SUD crisis has been limited. This minireview begins with a concise summary of the general concepts and advances in the use of

geospatial methods applied in epidemiology. Then, we discuss the spatial structure of the SUD epidemic in the United States, with a detailed emphasis on Ohio because it is one of the most affected states in the country. Finally, we discuss the challenges and the future of the implementation of spatial epidemiology in the study of the SUD epidemic.

GEOGRAPHICAL INFORMATION SYSTEMS IN EPIDEMIOLOGY

Epidemiology entails the study of the distribution and determinants of health challenges in populations. Epidemiological studies have centered on recognizing the type and extent of diseases affecting human health and identifying the causes associated to disease incidence[19]. In epidemiology, it is common to assess the associations that arise among the host, the agent, and the environment (the epidemiologic triangle) to identify the primary triggers of the health challenge and produce strategies for control and prevention[20]. Conventional epidemiology has traditionally centered on persons and time, and less on place[21]. Not long ago, the spatial place at which epidemics emerge and disperse has become a critical element for understanding the dynamics of an epidemic. As a result, the interconnected fields of spatial epidemiology and health geography, which focus on explaining spatial heterogeneity of diseases by examining spatially explicit health outcomes and predictors, have emerged as novel approaches for the understanding and controlling epidemics.

The ability to understand and study the function of geographical places in health outcome dynamics has significantly improved in the past several years. This progress is mainly associated to innovations in geospatial methods such as spatial analysis and Geographical Information Systems (GIS)[22]. Together with the fast development of geospatial tools such as spatial analysis and GIS, vast quantities of spatial social, environmental and health data are currently available[23,24]. Geospatial analysis can be used to identify spatial information by recognizing relationships and drivers of disease distribution.

Epidemiological research has been fundamental for understanding health disparities and preventing an increasing incidence of major diseases. In epidemiological research, GIS has been used to study basic health and epidemiological indicators and tendencies among populations and regions. Such information is used for planning, implementation, and monitoring targeted health interventions[25,26]. GIS can also assess changes in resource allocation or environmental exposures in addition to mapping epidemiological measures such as incidence, prevalence and mortality, as well as risk factors and treatment options[26]. GIS can identify trends in access and uptake of healthcare interventions; it can also reveal unanticipated factors impacting vulnerable populations. Consequently, GIS identifies healthcare disparities and aids in equitable resource reallocation[27], and it is also used to characterize health-related economic and behavioral traits in specific populations to design geographically targeted interventions[28].

Spatial analysis in epidemiological research and disease surveillance has become a critical component of the decision-making process in the design and implementation of control interventions and prevention programs[29]. Spatial epidemiology has been used mostly for studying communicable, and relatively indirectly, non-communicable diseases. However, recently, its application has been expanded to study other public health and social issues, such as suicide and sexual violence[30-32].

EXAMPLES OF THE IMPLEMENTATION OF SPATIAL EPIDEMIOLOGY TO STUDY DISEASE BURDEN

Spatial epidemiology is now a critical tool in the battle against harmful epidemics such as HIV and malaria. The quantitative methods for assessing the impact of geographical hotspots (areas suffering an excessively large burden of the health challenge) and determinants of the ecological and individual-level transmission have facilitated the control of these diseases[33]. The detection of these areas can reveal the locations of high-risk populations in addition to exposing the causes that enable the spread and persistence of epidemics[34].

One of the most successful examples of the implementation of spatial epidemiology and GIS is the Malaria Atlas Project (MAP)[35], a project funded by the Bill and Melinda Gates Foundation and developed by Oxford University. MAP has focused on understanding the spatial distribution of malaria, particularly in sub-Saharan Africa (SSA). Using spatial epidemiology and disease mapping techniques, MAP has uncovered the spatial distribution of malaria with a high level of detail. The spatial information provided by MAP has become a key tool in the fight against malaria in SSA identifying geographical regions that should be targeted through control efforts. Similarly, successful approaches like the “Know your epidemic, know your response”; a framework implemented for counteracting HIV epidemics in the world[36], have centered on the development of targeted prevention strategies based on detailed knowledge of the spatial dynamics of the epidemic. Healthcare providers have developed and used high-resolution maps of the HIV distribution in SSA to implement geographically-targeted, cost-effective interventions[37,38].

SPATIAL EPIDEMIOLOGY OF SUD

Despite spatial epidemiology's positive impact, there is limited research focused on how it can be used to manage the SUD epidemic in the United States. Unlike the previous examples of malaria and HIV, SUD is not an infectious disease. However, the incidence of SUD is dependent on several socioeconomic and demographic health determinants such as gender, age, income, education, and access to healthcare among others, factors that are strongly connected to the geographical location of individuals and communities[39]. In this context, geographical place provides a foundation for understanding how substance use-related behaviors, treatment, and prevention relate to spatial features that compose the geographical space, from the individual to the community and regional scale. Within this framework, SUD is a negative health behavior shaped by a spatial context that includes local access and cost of substances, access to resources and services, emerging social networks, economic conditions and cultural norms, and other specific socioeconomic characteristics that either enhance or reduce the exposure to substance use in a given geographical place[40]. Moreover, the intensity and effectiveness of treatment and prevention strategies for SUD vary from place to place, reflecting social, economic, and political factors that intersect around the community environment. Thus, spatial research on SUD requires analysis in a geographical context at different scales.

GIS and geospatial analyses can be used as powerful tools in the study of the SUD epidemic. For example, the place of prescribing and dispensing opioids can be mapped and spatially analyzed, though illicit substance distribution is more complex as drugs can be transported between areas. Still, both licit and illicit distribution and demand can be locally defined, and thus could exhibit specific spatial patterns[41]. The location of identified harms can be used as a sign of where substances are used, which can be linked to the location of the markets. Such information can be used to identify flows of the substances from the moment of dispensing to the point of use. Some studies have mapped the locations of such harms[42], as well as to find spatial hotspots of harms[43], how these harms diffuse in space[44] and their relationships with several individual and area-level predictors[45]. Analyzing changes in the spatial patterns of SUD dynamics over time is also important for understanding the impact of policy adjustments on substance use. For example, how is SUD-related mortality linked to environmental and social risk factors? How do social and economic factors influence the prevalence of drug users? Are rates of specific drug use elevated around drug production markets? These fundamental inquiries about the epidemiology of SUD can be addressed using a spatial epidemiology approach. For example, this approach was implemented in a report from North Carolina that observed an ecological correlation between rates of admission to Emergency Departments from opioid overdoses and rates of opioid sales [45].

The common understanding that addiction does not discriminate and everyone is at risk ignores the fact that the frequency of SUD cases varies significantly in space and that cases are commonly clustered in places characterized by specific socioeconomic and demographic factors such as income, education, crime levels, access to care, drug availability among others. Thus, while the underlying physiological processes linked to addiction may not discriminate, several socioeconomic and environmental factors that expose individuals and communities to increased risk of substance use are not spatially random. Therefore, the identification of vulnerable populations and locations at higher risk of SUD, as well as the drivers of SUD epidemics, are key to improving health policies and developing effective spatially-targeted prevention strategies.

SPATIAL EPIDEMIOLOGY OF SUD IN THE UNITED STATES

The United States is the country with the highest incidence of SUD and the highest burden of opioid overdose-related mortality in the world (Figure 1). As a result, SUD has been declared a top public health priority in the country[46]. In an attempt to understand the reasons behind this burden, numerous studies have investigated multiple attributes of the SUD epidemic in the United States. A growing body of evidence has shown associations between demographic and socioeconomic factors with SUD outcomes[47-49]. Other studies have found a strong connection between drug supply and a rise in drug mortality rates. These data suggest that the SUD crisis in the United States has been driven by changes in the dynamics of drug supply, availability, and distribution. For example, the opioids overdose crisis can be explained by the rise in prescription opioids in the late 1990s and 2000s, more than by social or economic conditions[8,50]. As a result, policymakers in the United States have applied several strategies to reduce SUD-related mortality levels. These measures have focused on restrictions to drug availability, including regulating the prescription of opioids, attempts to restrict the influx of illicit opioids, and increasing access to naloxone, a medicine that rapidly reverses an opioid overdose[51-54]. Although these efforts have been moderately effective in reducing SUD-related mortality rates in general, other strategies like identifying the areas and vulnerable populations that are suffering the highest burden of the epidemic in the United States would improve the capacity to implement prevention strategies, which have been shown to be more effective in controlling other diseases than coercive intervention strategies alone[36].

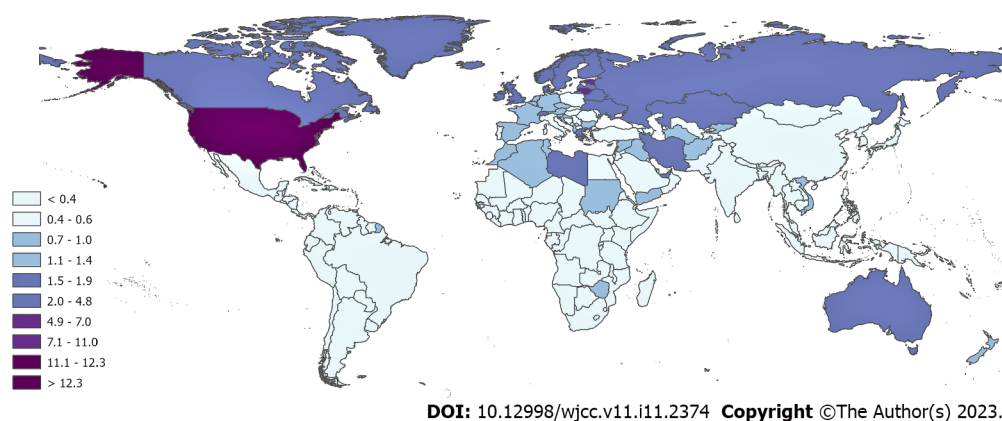


Figure 1 Death rates (number of deaths per 100000 individuals in 2019) from opioid overdoses in the world. Source: IHME, Global Burden of Disease, 2019 (<https://www.healthdata.org/gbd/2019>). Maps were generated using ArcGIS Pro. 2.8[86].

National data on SUD-related mortality have shown that the epidemic is not uniformly distributed within the United States[55]. The reasons behind the heterogeneous spatial distribution of the SUD epidemic within the country are relatively unknown. Although a link between illegal and prescription drug availability and SUD-related deaths has been described, the major reasons behind the sharp increase in the epidemic in specific areas remain incomplete[10]. In addition, the epidemiological characteristics of the SUD epidemic remain underexplored, what factors are boosting the epidemic, and where and what demographical groups are at higher risk in recent years[17,18], particularly at the local level[56,57]. Understanding the geographical distribution of SUD at this level of specificity may enable the implementation of public health intervention strategies and elucidate geographically specific risk management responses. It also facilitates the identification of contextual factors that contribute to and may increase the risk of drug misuse, including health-related, economic, socio-cultural, and local policy-relevant attributes. Geospatial analyses at this more granular local level could contextualize these individual and community factors linked to SUD and other risk behaviors[43].

Aligned with the “Know your epidemic, know your response” approach that has been successfully implemented to tackle the HIV epidemic[36], we previously conducted a detailed spatial analysis to identify the vulnerable populations and locations at higher risk of SUD-related mortality as well as the drivers of the current SUD epidemic in the United States[58]. Using a repertoire of interdisciplinary methods, including spatial epidemiology, disease mapping, and statistical modeling, we examined data provided by the Centers for Disease Control and Prevention on more than 22 million deaths from 2005 to 2017[59]. We obtained information about drug overdose deaths for persons aged five to 84 years to estimate SUD mortality rates in the United States. These rates included deaths caused by heroin, methadone, cocaine, opioids, synthetic narcotics, and unspecified narcotics. The main finding of this study is that the SUD epidemic in the United States is typified by the occurrence of several micro-epidemics of distinct intensities across geographical locations and demographic groups within the country. We found that White males, particularly those aged 25-34 years, had the highest risk of SUD-related death. Recently, there has been a rapid rise of the SUD epidemic in the Black male population, with a rapid increase in the SUD-related mortality rate in this group since 2014, reaching a death rate similar to that for White males in 2017. The temporal dynamics of the epidemic can be the result of changes in the substances driving the epidemic, switching from prescription opioids mostly affecting the White male population to more readily available synthetic opioids leading to the latest phase of the epidemic and affecting the Black male population.

The notable disparity among gender and racial groups could be associated with the temporal trend associated with three different waves in the SUD epidemic[60]. Briefly, the first epidemic wave from 1970 to 1999 was driven by heroin overdoses, which affected the Black population at higher rates than other racial populations. Prescription opioids frequently used for pain management therapy served as the primary driver of the second wave, which spanned the years from 1999 to 2010 and caused a more pronounced rise in death rates among White people[61,62]. The emergence of synthetic opioids and the combination of prescription opioids are primarily blamed for the third and most current wave[63]. This most recent wave has revealed a comparable increase in both racial groupings across the country (White and Black)[61].

Further analysis revealed that the epidemic is concentrated in specific geographic areas located in the West and Midwest regions (Figure 2A). The majority of SUD-related deaths occurred in regions of the Midwest around the tri-state border of Kentucky, Ohio, and West Virginia. Southern Pacific and mountain states, including California, Colorado, Nevada, New Mexico, and Utah, are other regions with a high proportion of SUD-related mortality. The spatial structure of the epidemic in the White population had a similar pattern as observed for the general population (Figure 2B). In contrast, the

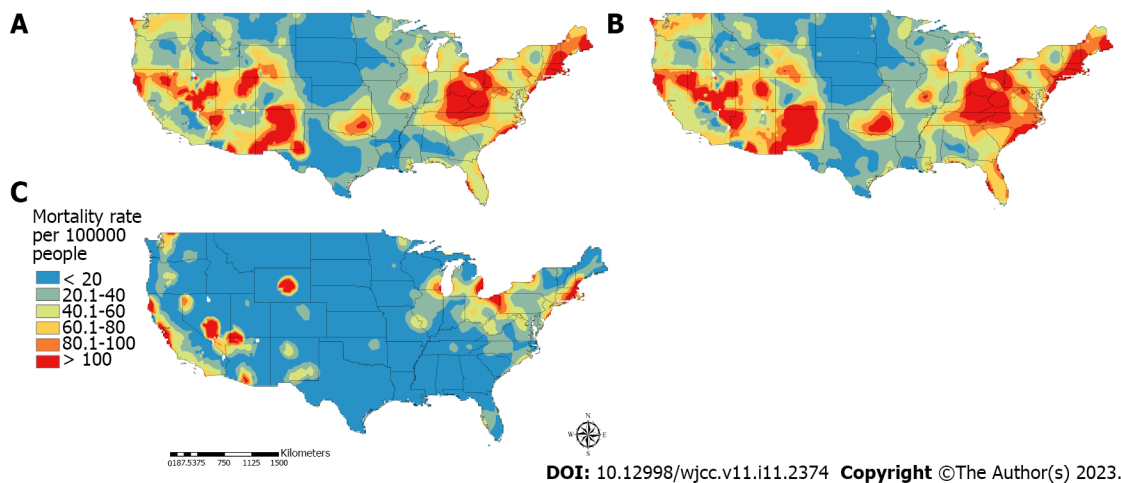


Figure 2 Spatial distribution of the substance use disorder related mortality. A: The general population; B: White population; C: Black population in the contiguous United States. Maps were generated using ArcGIS Pro. 2.8[86].

epidemic in the Black population was concentrated in the mid-Atlantic and Northeast (*e.g.*, Connecticut, Rhode Island, Massachusetts, and New Hampshire) and the West (*e.g.*, California, Nevada, and Arizona) (Figure 2C).

It is important to note that, as the United States Department of Health and Human Services declared in 2018[64], overdoses caused by synthetic opioids (such as fentanyl and analogs) are developing into a nationwide public health disaster. Opioid overdose deaths frequently result from prior drug use, which frequently starts between the ages of 18 and 25[63]. Teenagers who have a history of substance abuse are 10 times more likely than other teenagers to have drug use disorders in the future[60]. People between the ages of 25 and 44 may start taking opioids for recreational or therapeutic purposes before switching to more affordable drugs like fentanyl[65]. Our findings, which indicate that the young adult population (25–39 years) was bearing the greatest burden of opioid overdose deaths and was likely in the latter stage of an opioid use disorder history, are consistent with this early onset of substance addiction.

These comprehensive geographical and epidemiological descriptions of the vulnerable populations at high risk of the SUD epidemic in the United States can be applied to generate spatially targeted prevention strategies and intervention campaigns. Geospatial approaches and data visualization technologies (*e.g.*, GIS maps) generate unique opportunities for the early detection of the impacts of highly affected areas and then assess, diagnose, and treat those vulnerable communities affected by this health challenge. Geospatial data acquired from GIS maps support the visualization of SUD events that can be rapidly analyzed, permitting the detection of patterns and the creation of plans to monitor trends in data and co-locate needs and resources[66]. The development of targeted, integrated, preventive strategies for the early identification of substance use in the vulnerable populations nationwide would be made possible by micro-targeting strategies based on an understanding of the spatial assembly and the multifactorial characterization of the addiction epidemic[6,67]. Such strategies have been shown to be successful in areas in New York City and Cambridge, MA, that are highly affected by SUD. In these areas, geospatial analyses have been used to identify priority targets for the deployment of naloxone as a key element of their SUD intervention programs[68,69].

GEOGRAPHICAL PROFILE OF THE OPIOID OVERDOSE EPIDEMIC IN OHIO

Spatial variation of health outcomes occurs at different scales, from a large national level to a local scale. Similarly, the drivers of disease distribution can influence the spatial structure of epidemics at different scales. As we have shown in the previous section, the SUD crisis in the United States is not homogeneously distributed across the country. For example, national data on SUD overdose mortality rates have shown that 20 states and the District of Columbia have reported SUD-related mortality rates that are statistically higher than the national rate. In particular, West Virginia (57.8 SUD-related deaths per 100,000 persons), Ohio (46.3), Pennsylvania (44.3), the District of Columbia (44.0), and Kentucky (37.2) experienced the highest death rates in 2017[70]. Therefore, a more detailed local description of the epidemic can uncover local drivers of the epidemic in each of these affected areas. As a result, a more thorough local description of the epidemic can reveal the outbreak's regional causes in each of these impacted locations. As previously indicated, opioids are the leading cause of SUD-related mortality in the nation, accounting for over 75% of all drug overdose deaths in 2020[4]. Ohio is one of eight states where the opioid mortality rate doubled between 1999 and 2019, with data being released every three

years. Unintentional drug overdose deaths in Ohio have reached record highs, especially those caused by synthetic opioids[7,71].

In a previous study[72], we analyzed the geographical and temporal dynamics of the opioid overdose epidemic in Ohio using data from the Ohio Department of Health. We examined data on more than 11000 opioid related death cases in Ohio occurring from 2010 to 2016. We found that the opioid overdose epidemic in Ohio was located in specific areas (hotspots) and affected limited demographic groups during this time period. There was a fast surge in prescription opioid death rates among the White male population aged 30-39 years and a rise of the epidemic in the Black male population. White males had the highest mortality rate caused by opioid overdose deaths with 43.7 deaths/100000 persons, followed by Black males with 27.3 deaths/100000 persons, and in general, the opioid overdose mortality rate was exponentially increasing in all of these groups from 2010 to 2016 (Figure 3).

The geospatial analysis conducted suggested that most of the deaths were geographically clustered within the Ohio counties of Butler, Clark, Clermont, Cuyahoga, Franklin, Hamilton, Marion, and Montgomery (Figure 4A), where the average mortality rate caused by opioid overdose was more than eight times higher (199/100000 persons) than the state average (29/100000 persons). These results support our observations that, comparable to the national patterns observed, the opioid overdose epidemic in Ohio is concentrated in geographic hotspot areas and vulnerable populations at risk of opioid overdose. Figure 4A also illustrates the distribution of pharmacies that dispense naloxone in Ohio. There is a high density of pharmacies in the main cities and metropolitan areas of Cincinnati, Columbus, and Cleveland. In further analyses, we found that the average distance between opioid overdose death locations and the nearest pharmacy dispensing naloxone was 3.15 km (1.96 mi). We estimated that in 14% of Ohio, the nearest pharmacy with an established protocol for naloxone dispensing was located more than 10 km (6.2 mi) away from the location of the opioid overdose death. We also identified counties (*e.g.*, Ross, Hocking, Pike, Jackson, Vinton, and Gallia) that had high mortality rates but low density of pharmacies (Figure 4B). These results identified specific underserved areas for naloxone distribution characterized by high SUD mortality rates that would benefit from an increase in the response capacity for these areas.

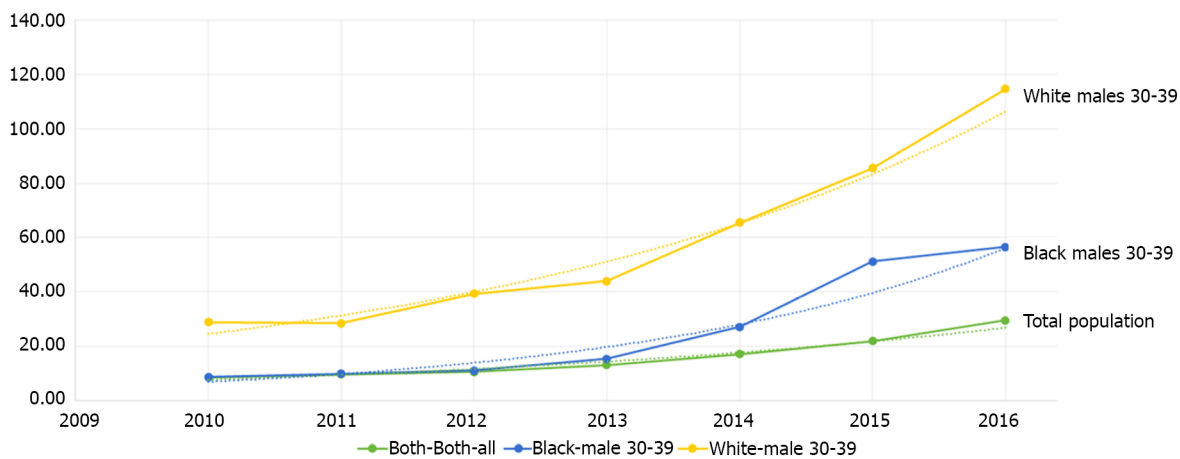
Overall, these findings highlight the necessity of concentrating local public health initiatives on vulnerable populations and high-risk locations in order to not only contain the current SUD epidemic in Ohio but also to educate other states across the nation experiencing comparable local epidemics. It's possible that the opioid overdose epidemic will keep growing. Therefore, to combat the epidemic's present rising phase, it is essential to recognize economic, social, and health determinants[73]. The opioid crisis is a complicated epidemic that may have been started by unchecked prescribing of painkillers. Nevertheless, it has also recently been fueled by the introduction of synthetic opioids intended for recreational use, particularly fentanyl and its analogs. It's important to emphasize that in order to highlight the local spatial differences of the SUD epidemic, we only included data from January 2011 to December 2016 in the instances presented here. According to reports, there was a decline in opioid overdose deaths in Ohio beginning in the final semester of 2017 and early 2018, followed by a rebound in 2019 and 2020. This is thought to be due to the availability of more potent drugs such as carfentanyl on the state's and the nation's black market[74,75].

CONCLUSION

The role of spatial epidemiology and geographic methods for the study of drug abuse continues to grow. The combination of geographical and epidemiological research methods focused on human and social environment interactions is essential to gain a better understanding of drug use issues and their inherent complexities. The use of geospatial analysis to target areas with high SUD risk can allow for a more comprehensive understanding of the socioeconomic and demographic drivers of the SUD epidemic in the United States. While the SUD epidemic still disproportionately affects higher-poverty areas and racial minorities, SUD-associated deaths have become more dispersed across broader geographic areas and sociodemographic groups.

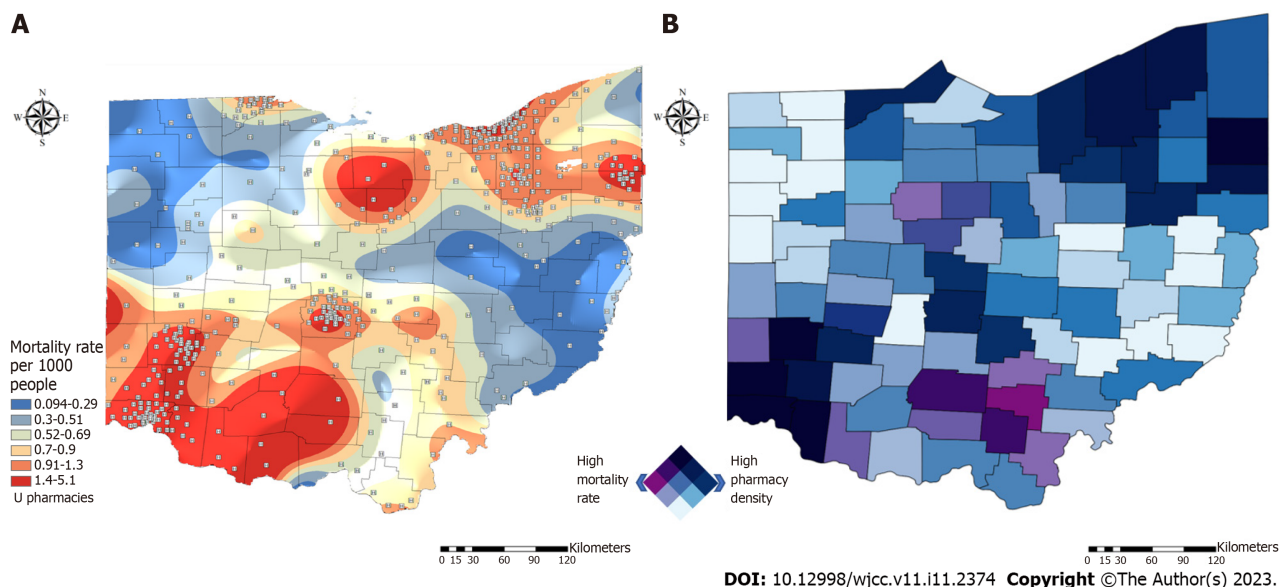
In this narrative minireview, we summarized current research that applied geospatial techniques to the study of the ongoing SUD epidemic in the United States. SUD rates may continue to increase over time, and different areas and populations are affected with different intensities by this epidemic in the country. While socioeconomic or geographic characteristics of specific neighborhoods can contribute to the impact of the SUD epidemic in vulnerable communities in the country at different intensities[42,76,77], specific social, geographical, and economic determinants are numerous and the ability to isolate one variable is still challenging[77-79]. Therefore, identifying who is most likely to be affected and where they are located is critical to effectively confront this epidemic[73].

Strategies to tackle the SUD epidemic include identifying the demographic and socioeconomic drivers of the epidemic and targeting improved interventions and access to them (*e.g.*, access to naloxone). Furthermore, the establishment of safe places for regulated drug use can help to prevent death and avoid the spread of other diseases[73,80]. There are several challenges, however, such as the constrained geography of most of the studies: Most have been conducted in major metropolitan areas,



DOI: 10.12998/wjcc.v11.i11.2374 Copyright ©The Author(s) 2023.

Figure 3 Temporal dynamics of the opioids overdose epidemic in Ohio (2010–2016) in the total population and in the most affected populations. The highest prescription opioid overdose mortality rates were found in the White male population aged 30–39 years, with 125 deaths/100000 persons, followed by Black males of same age, with 57 deaths/100000 persons compared to the 29 deaths/100000 persons for the total population in 2016. Dashed lines illustrated the fitted exponential curve for each growth rate. Plot was created using the software environment R[87].



DOI: 10.12998/wjcc.v11.i11.2374 Copyright ©The Author(s) 2023.

Figure 4 Spatial distribution of the opioid overdose epidemic in Ohio. A: Spatial distribution of opioids overdose mortality rate in Ohio; B: Bivariate map illustrating counties with high opioid overdose mortality rate (purple) and high density of pharmacies (blue). Counties in dark color have both high opioids overdose mortality and density of pharmacies dispensing naloxone. Maps were generated using ArcGIS Pro. 2.8[86].

which have been heavily affected by the epidemic. Still, substance abuse is certainly not limited to these places. The impact of the SUD epidemic in small towns and rural areas is understudied. Spatial techniques such as GIS are needed to learn more about these areas[81]. Measuring the SUD epidemic at the local level is a challenge that has significant consequences on resource allocation.

Furthermore, geospatial analyses are usually ecologic studies that cannot account for decedent characteristics, including duration of county residence, and data aggregation precludes the inclusion of information such as race/ethnicity, sex, and age and the subsequent identification of important demographic variation in the epidemic[82]. Associations between the risk factors and SUD-related mortality rates may vary across groups[83]. Likewise, adults and adolescents may display distinct spatial trends and need unique interventions and resources, making it important to examine the problem at different demographic scales[84]. Promising advances in geospatial methods are making this possible, but more work is necessary to identify the methods and to analyze the results of their applications.

The federal, state, and local governments in the United States have implemented a number of intervention strategies to lower the mortality rates associated with SUD, including initiatives to reduce the flow of illegal opioids, restrictions on the prescription of opioids, and increased access to naloxone.

While efforts like these and others have been somewhat successful in lowering overdose mortality rates overall, pinpointing the regions and populations most vulnerable to the various sub-epidemics would make it easier to plan prevention and control campaigns, which have been shown to be more successful in combating other diseases than broad intervention strategies alone[36]. Furthermore, identifying the extent to which geographical factors and social context are interrelated is a key step to generate a more comprehensive understanding of the SUD epidemic. All domains of the SUD epidemic including demand, supply, harms and harm reduction, can have a distinct geographic dimension[41]. As a result, the geographical and epidemiological identification of vulnerable groups in the United States at high risk of SUD-related mortality presented in this minireview can be used to develop geotargeted preventative strategies and intervention initiatives. Targeted tactics based on a knowledge of the geographical structure and multidimensional character of the addiction epidemic would aid in the development of coherent preventive treatments for early diagnosis in the young adult population[6,67, 85,86]. Nonetheless, there is an undeniable need for more comprehensive initiatives targeted at understanding the epidemic, such as a focus on possible disparities among demographic groups and locations with vulnerable populations at high risk of drug use.

FOOTNOTES

Author contributions: Cuadros DF contribute to the conceptual idea and wrote the first draft of the paper; Branscum AJ, Moreno CM, and MacKinnon NJ contributed to the conceptual idea and helped to write the manuscript.

Conflict-of-interest statement: All the authors report no relevant conflicts of interest for this article.

Open-Access: This article is an open-access article that was selected by an in-house editor and fully peer-reviewed by external reviewers. It is distributed in accordance with the Creative Commons Attribution NonCommercial (CC BY-NC 4.0) license, which permits others to distribute, remix, adapt, build upon this work non-commercially, and license their derivative works on different terms, provided the original work is properly cited and the use is non-commercial. See: <https://creativecommons.org/licenses/by-nc/4.0/>

Country/Territory of origin: United States

ORCID number: Diego F Cuadros 0000-0001-7060-4203.

S-Editor: Fan JR

L-Editor: A

P-Editor: Fan JR

REFERENCES

- 1 Chen S, Ma Y, Cai W, Moretta T, Wang X, Liu T, Potenza MN. Factorial validity of a substance-use stigma scale in methamphetamine-using adults in China. *Drug Alcohol Depend* 2020; **206**: 107677 [PMID: 31732296 DOI: 10.1016/j.drugalcdep.2019.107677]
- 2 American Society of Addiction Medicine (ASAM). Public Policy Statement: Long Definition of Addiction, 2019. Available from: <https://academic.oup.com/book/29516/chapter-abstract/248088740?redirectedFrom=fulltext>
- 3 CDC. National Center for Health Statistics Mortality Data on CDC WONDER. 2022. Available from: <https://wonder.cdc.gov/Deaths-by-Underlying-Cause.html>
- 4 NIH. Overdose Death Rates. 2022. Available from: <https://www.nih.gov/>
- 5 Olfson M, Rossen LM, Wall MM, Houry D, Blanco C. Trends in Intentional and Unintentional Opioid Overdose Deaths in the United States, 2000-2017. *JAMA* 2019; **322**: 2340-2342 [PMID: 31846008 DOI: 10.1001/jama.2019.16566]
- 6 Rigg KK, Monnat SM, Chavez MN. Opioid-related mortality in rural America: Geographic heterogeneity and intervention strategies. *Int J Drug Policy* 2018; **57**: 119-129 [PMID: 29754032 DOI: 10.1016/j.drugpo.2018.04.011]
- 7 Kiang MV, Basu S, Chen J, Alexander MJ. Assessment of Changes in the Geographical Distribution of Opioid-Related Mortality Across the United States by Opioid Type, 1999-2016. *JAMA Netw Open* 2019; **2**: e190040 [PMID: 30794299 DOI: 10.1001/jamanetworkopen.2019.0040]
- 8 Ruhm CJ. Geographic Variation in Opioid and Heroin Involved Drug Poisoning Mortality Rates. *Am J Prev Med* 2017; **53**: 745-753 [PMID: 28797652 DOI: 10.1016/j.amepre.2017.06.009]
- 9 Unick GJ, Ciccarone D. US regional and demographic differences in prescription opioid and heroin-related overdose hospitalizations. *Int J Drug Policy* 2017; **46**: 112-119 [PMID: 28688539 DOI: 10.1016/j.drugpo.2017.06.003]
- 10 Stopka TJ, Amaravadi H, Kaplan AR, Hoh R, Bernson D, Chui KKH, Land T, Walley AY, LaRochelle MR, Rose AJ. Opioid overdose deaths and potentially inappropriate opioid prescribing practices (PIP): A spatial epidemiological study. *Int J Drug Policy* 2019; **68**: 37-45 [PMID: 30981166 DOI: 10.1016/j.drugpo.2019.03.024]
- 11 Compton WM, Gfroerer J, Conway KP, Finger MS. Unemployment and substance outcomes in the United States 2002-2010. *Drug Alcohol Depend* 2014; **142**: 350-353 [PMID: 25042761 DOI: 10.1016/j.drugalcdep.2014.06.012]
- 12 Langabeer JR, Chambers KA, Cardenas-Turan M, Champagne-Langabeer T. County-level factors underlying opioid

- mortality in the United States. *Subst Abuse* 2022; **43**: 76-82 [PMID: [32186475](#) DOI: [10.1080/08897077.2020.1740379](#)]
- 13 **Acharya A**, Izquierdo AM, Gonçalves SF, Bates RA, Taxman FS, Slawski MP, Rangwala HS, Sikdar S. Exploring county-level spatio-temporal patterns in opioid overdose related emergency department visits. *PLoS One* 2022; **17**: e0269509 [PMID: [36584000](#) DOI: [10.1371/journal.pone.0269509](#)]
 - 14 **Schoenfeld ER**, Leibowitz GS, Wang Y, Chen X, Hou W, Rashidian S, Saltz MM, Saltz JH, Wang F. Geographic, Temporal, and Sociodemographic Differences in Opioid Poisoning. *Am J Prev Med* 2019; **57**: 153-164 [PMID: [31227281](#) DOI: [10.1016/j.amepre.2019.03.020](#)]
 - 15 **Dean A**, Kimmel S. Free trade and opioid overdose death in the United States. *SSM Popul Health* 2019; **8**: 100409 [PMID: [31309136](#) DOI: [10.1016/j.ssmph.2019.100409](#)]
 - 16 **Haffajee RL**, Lin LA, Bohnert ASB, Goldstick JE. Characteristics of US Counties With High Opioid Overdose Mortality and Low Capacity to Deliver Medications for Opioid Use Disorder. *JAMA Netw Open* 2019; **2**: e196373 [PMID: [31251376](#) DOI: [10.1001/jamanetworkopen.2019.6373](#)]
 - 17 **James K**, Jordan A. The Opioid Crisis in Black Communities. *J Law Med Ethics* 2018; **46**: 404-421 [PMID: [30146996](#) DOI: [10.1177/1073110518782949](#)]
 - 18 **Blangiardo M**, Cameletti M, Baio G, Rue H. Spatial and spatio-temporal models with R-INLA. *Spat Spatiotemporal Epidemiol* 2013; **4**: 33-49 [PMID: [23481252](#) DOI: [10.1016/j.sste.2012.12.001](#)]
 - 19 **Krieger N**. Epidemiology and the people's health: theory and context. Oxford University Press, 2011
 - 20 **Mcanally HB**. Opioid dependence: a clinical and epidemiologic approach. *Springer* 2017 [DOI: [10.1007/978-3-319-47497-7_1](#)]
 - 21 **Moore DA**, Carpenter TE. Spatial analytical methods and geographic information systems: use in health research and epidemiology. *Epidemiol Rev* 1999; **21**: 143-161 [PMID: [10682254](#) DOI: [10.1093/oxfordjournals.epirev.a017993](#)]
 - 22 **Rushton G**. Public health, GIS, and spatial analytic tools. *Annu Rev Public Health* 2003; **24**: 43-56 [PMID: [12471269](#) DOI: [10.1146/annurev.publhealth.24.012902.140843](#)]
 - 23 **Nykiforuk CI**, Flaman LM. Geographic information systems (GIS) for Health Promotion and Public Health: a review. *Health Promot Pract* 2011; **12**: 63-73 [PMID: [19546198](#) DOI: [10.1177/1524839909334624](#)]
 - 24 **Thomas YF**, Richardson D, Cheung I. Geography and drug addiction. New York: Springer Science and Business Media, 2008
 - 25 **Musa GJ**, Chiang PH, Sylk T, Bavley R, Keating W, Lakew B, Tsou HC, Hoven CW. Use of GIS Mapping as a Public Health Tool-From Cholera to Cancer. *Health Serv Insights* 2013; **6**: 111-116 [PMID: [25114567](#) DOI: [10.4137/HSI.S10471](#)]
 - 26 **Higgs G**. A literature review of the use of GIS-based measures of access to health care services. *Health Serv Outcomes Res Methodol* 2004; **5**: 119-139 [DOI: [10.1007/s10742-005-4304-7](#)]
 - 27 **Jones AP**, Haynes R, Sauerzapf V, Crawford SM, Zhao H, Forman D. Travel time to hospital and treatment for breast, colon, rectum, lung, ovary and prostate cancer. *Eur J Cancer* 2008; **44**: 992-999 [PMID: [18375117](#) DOI: [10.1016/j.ejca.2008.02.001](#)]
 - 28 **Dermatis Z**, Tsoromokos D, Gozadinos F, Lazakidou A. The utilization of geographic information systems in healthcare. *Int J Health Res Innov* 2016; **4** [DOI: [10.1007/978-3-319-23341-3_4](#)]
 - 29 **Rytönen MJ**. Not all maps are equal: GIS and spatial analysis in epidemiology. *Int J Circumpolar Health* 2004; **63**: 9-24 [PMID: [15139238](#) DOI: [10.3402/ijch.v63i1.17642](#)]
 - 30 **Fontanella CA**, Saman DM, Campo JV, Hiance-Steelesmith DL, Bridge JA, Sweeney HA, Root ED. Mapping suicide mortality in Ohio: A spatial epidemiological analysis of suicide clusters and area level correlates. *Prev Med* 2018; **106**: 177-184 [PMID: [29133266](#) DOI: [10.1016/j.ypmed.2017.10.033](#)]
 - 31 **Kelling C**, Graif C, Korkmaz G, Haran M. Modeling the Social and Spatial Proximity of Crime: Domestic and Sexual Violence Across Neighborhoods. *J Quant Criminol* 2021; **37**: 481-516 [PMID: [34149156](#) DOI: [10.1007/s10940-020-09454-w](#)]
 - 32 **Tomita A**, Cuadros DF, Gibbs A. Syndemics of intimate partner violence among women in HIV endemic South Africa: geospatial analysis of nationally representative data. *Sci Rep* 2022; **12**: 18083 [PMID: [36302814](#) DOI: [10.1038/s41598-022-20230-7](#)]
 - 33 **Cuadros DF**, Awad SF, Abu-Raddad LJ. Mapping HIV clustering: a strategy for identifying populations at high risk of HIV infection in sub-Saharan Africa. *Int J Health Geogr* 2013; **12**: 28 [PMID: [23692994](#) DOI: [10.1186/1476-072X-12-28](#)]
 - 34 **Ostfeld RS**, Glass GE, Keesing F. Spatial epidemiology: an emerging (or re-emerging) discipline. *Trends Ecol Evol* 2005; **20**: 328-336 [PMID: [16701389](#) DOI: [10.1016/j.tree.2005.03.009](#)]
 - 35 **Hay SI**, Snow RW. The malaria Atlas Project: developing global maps of malaria risk. *PLoS Med* 2006; **3**: e473 [PMID: [17147467](#) DOI: [10.1371/journal.pmed.0030473](#)]
 - 36 **Wilson D**, Halperin DT. "Know your epidemic, know your response": a useful approach, if we get it right. *Lancet* 2008; **372**: 423-426 [PMID: [18687462](#) DOI: [10.1016/S0140-6736\(08\)60883-1](#)]
 - 37 **Cuadros DF**, Li J, Branscum AJ, Akullian A, Jia P, Mziray EN, Tanser F. Mapping the spatial variability of HIV infection in Sub-Saharan Africa: Effective information for localized HIV prevention and control. *Sci Rep* 2017; **7**: 9093 [PMID: [28831171](#) DOI: [10.1038/s41598-017-09464-y](#)]
 - 38 **Dwyer-Lindgren L**, Cork MA, Sligar A, Steuben KM, Wilson KF, Provost NR, Mayala BK, VanderHeide JD, Collison ML, Hall JB, Biehl MH, Carter A, Frank T, Douwes-Schultz D, Burstein R, Casey DC, Deshpande A, Earl L, El Bcheraoui C, Farag TH, Henry NJ, Kinyoki D, Marczak LB, Nixon MR, Osgood-Zimmerman A, Pigott D, Reiner RC Jr, Ross JM, Schaeffer LE, Smith DL, Davis Weaver N, Wiens KE, Eaton JW, Justman JE, Opio A, Sartorius B, Tanser F, Wabiri N, Piot P, Murray CJL, Hay SI. Mapping HIV prevalence in sub-Saharan Africa between 2000 and 2017. *Nature* 2019; **570**: 189-193 [PMID: [31092927](#) DOI: [10.1038/s41586-019-1200-9](#)]
 - 39 **Dijkstra A**, Hak E, Janssen F. A systematic review of the application of spatial analysis in pharmacoepidemiologic research. *Ann Epidemiol* 2013; **23**: 504-514 [PMID: [23830932](#) DOI: [10.1016/j.annepidem.2013.05.015](#)]
 - 40 **Merikangas KR**, McClair VL. Epidemiology of substance use disorders. *Hum Genet* 2012; **131**: 779-789 [PMID: [22543841](#) DOI: [10.1007/s00439-012-1168-0](#)]

- 41 **Mazumdar S**, Merae IS, Islam MM. How Can Geographical Information Systems and Spatial Analysis Inform a Response to Prescription Opioid Misuse? *Curr Drug Abuse Rev* 2015; **8**: 104-110 [PMID: [26452451](#) DOI: [10.2174/187447370802150928185302](#)]
- 42 **Cerdá M**, Ransome Y, Keyes KM, Koenen KC, Tracy M, Tardiff KJ, Vlahov D, Galea S. Prescription opioid mortality trends in New York City, 1990-2006: examining the emergence of an epidemic. *Drug Alcohol Depend* 2013; **132**: 53-62 [PMID: [23357743](#) DOI: [10.1016/j.drugalcdep.2012.12.027](#)]
- 43 **Brownstein JS**, Green TC, Cassidy TA, Butler SF. Geographic information systems and pharmacoepidemiology: using spatial cluster detection to monitor local patterns of prescription opioid abuse. *Pharmacoepidemiol Drug Saf* 2010; **19**: 627-637 [PMID: [20535759](#) DOI: [10.1002/pds.1939](#)]
- 44 **Frischer M**, Anderson S, Hickman M, Heatlie H. Diffusion of drug misuse in Scotland: Findings from the 1993 and 1996 Scottish Crime Surveys. *Addict Res Theory* 2002; **10**: 83-96 [DOI: [10.1046/j.1360-0443.2001.9610146510.x](#)]
- 45 **Modarai F**, Mack K, Hicks P, Benoit S, Park S, Jones C, Proescholdbell S, Ising A, Paulozzi L. Relationship of opioid prescription sales and overdoses, North Carolina. *Drug Alcohol Depend* 2013; **132**: 81-86 [PMID: [23399467](#) DOI: [10.1016/j.drugalcdep.2013.01.006](#)]
- 46 **Schulden JD**, Thomas YF, Compton WM. Substance abuse in the United States: findings from recent epidemiologic studies. *Curr Psychiatry Rep* 2009; **11**: 353-359 [PMID: [19785975](#) DOI: [10.1007/s11920-009-0053-6](#)]
- 47 **Frasquilho D**, Matos MG, Salonna F, Guerreiro D, Storti CC, Gaspar T, Caldas-de-Almeida JM. Mental health outcomes in times of economic recession: a systematic literature review. *BMC Public Health* 2016; **16**: 115 [PMID: [26847554](#) DOI: [10.1186/s12889-016-2720-y](#)]
- 48 **Hempstead KA**, Phillips JA. Rising suicide among adults aged 40-64 years: the role of job and financial circumstances. *Am J Prev Med* 2015; **48**: 491-500 [PMID: [25736978](#) DOI: [10.1016/j.amepre.2014.11.006](#)]
- 49 **Kerr WC**, Kaplan MS, Huguet N, Caetano R, Giesbrecht N, McFarland BH. Economic Recession, Alcohol, and Suicide Rates: Comparative Effects of Poverty, Foreclosure, and Job Loss. *Am J Prev Med* 2017; **52**: 469-475 [PMID: [27856114](#) DOI: [10.1016/j.amepre.2016.09.021](#)]
- 50 **Masters RK**, Tilstra AM, Simon DH. Mortality from Suicide, Chronic Liver Disease, and Drug Poisonings among Middle-Aged U.S. White Men and Women, 1980-2013. *Biodemography Soc Biol* 2017; **63**: 31-37 [PMID: [28287304](#) DOI: [10.1080/19485565.2016.1248892](#)]
- 51 **Sugarman OK**, Bachhuber MA, Wennerstrom A, Bruno T, Springgate BF. Interventions for incarcerated adults with opioid use disorder in the United States: A systematic review with a focus on social determinants of health. *PLoS One* 2020; **15**: e0227968 [PMID: [31961908](#) DOI: [10.1371/journal.pone.0227968](#)]
- 52 **Timko C**, Valenstein H, Lin PY, Moos RH, Stuart GL, Cronkite RC. Addressing substance abuse and violence in substance use disorder treatment and batterer intervention programs. *Subst Abuse Treat Prev Policy* 2012; **7**: 37 [PMID: [22958624](#) DOI: [10.1186/1747-597X-7-37](#)]
- 53 **MacCoun R**, Reuter P. Drug control. Stanford: The handbook of crime and punishment, 1998: 207-238
- 54 **Sacks DW**, Hollingsworth A, Nguyen T, Simon K. Can policy affect initiation of addictive substance use? *J Health Econ* 2021; **76**: 102397 [PMID: [33383263](#) DOI: [10.1016/j.jhealeco.2020.102397](#)]
- 55 **Jalal H**, Buchanich JM, Roberts MS, Balmert LC, Zhang K, Burke DS. Changing dynamics of the drug overdose epidemic in the United States from 1979 through 2016. *Science* 2018; **361** [PMID: [30237320](#) DOI: [10.1126/science.aau1184](#)]
- 56 **Forrester MB**. Oxycodone abuse in Texas, 1998-2004. *J Toxicol Environ Health A* 2007; **70**: 534-538 [PMID: [17365606](#) DOI: [10.1080/15287390600870924](#)]
- 57 **Havens JR**, Talbert JC, Walker R, Leedham C, Leukefeld CG. Trends in controlled-release oxycodone (OxyContin) prescribing among Medicaid recipients in Kentucky, 1998-2002. *J Rural Health* 2006; **22**: 276-278 [PMID: [16824176](#) DOI: [10.1111/j.1748-0361.2006.00046.x](#)]
- 58 **Hernández A**, Lan M, MacKinnon NJ, Branscum AJ, Cuadros DF. "Know your epidemic, know your response": Epidemiological assessment of the substance use disorder crisis in the United States. *PLoS One* 2021; **16**: e0251502 [PMID: [34038441](#) DOI: [10.1371/journal.pone.0251502](#)]
- 59 **National Center for Health**. Mortality Multiple Cause Data Files. In: Centers for Disease Control and Prevention, US Department of Health and Human Services, editors. United States, 2005-2017
- 60 **Mohammad JS**, Botticelli M, Hwang R, Koh HK, McHugh RK. The Opioid Crisis: A Contextual Framework and Call for Systems Science Research. Working paper. Available from: https://scholar.harvard.edu/files/jalali/files/the_opioid_crisis_preprint.pdf
- 61 **Alexander MJ**, Kiang MV, Barbieri M. Trends in Black and White Opioid Mortality in the United States, 1979-2015. *Epidemiology* 2018; **29**: 707-715 [PMID: [29847496](#) DOI: [10.1097/EDE.0000000000000858](#)]
- 62 **Hadland SE**, Rivera-Aguirre A, Marshall BDL, Cerdá M. Association of Pharmaceutical Industry Marketing of Opioid Products With Mortality From Opioid-Related Overdoses. *JAMA Netw Open* 2019; **2**: e186007 [PMID: [30657529](#) DOI: [10.1001/jamanetworkopen.2018.6007](#)]
- 63 **Ciccarone D**. The triple wave epidemic: Supply and demand drivers of the US opioid overdose crisis. *Int J Drug Policy* 2019; **71**: 183-188 [PMID: [30718120](#) DOI: [10.1016/j.drugpo.2019.01.010](#)]
- 64 **The White House**. Ending Americas Opioid Crisis. 2018 Available from: <https://academic.oup.com/book/32440/chapter-abstract/268773308?redirectedFrom=fulltext>
- 65 **Spencer MR**, Warner M, Bastian BA, Trinidad JP, Hedegaard H. Drug Overdose Deaths Involving Fentanyl, 2011-2016. *Natl Vital Stat Rep* 2019; **68**: 1-19 [PMID: [31112123](#)]
- 66 **Anwar T**, Duever M, Jayawardhana J. Access to methadone clinics and opioid overdose deaths in Georgia: A geospatial analysis. *Drug Alcohol Depend* 2022; **238**: 109565 [PMID: [35839618](#) DOI: [10.1016/j.drugalcdep.2022.109565](#)]
- 67 **Holmes CB**, Rabkin M, Ford N, Preko P, Rosen S, Ellman T, Ehrenkranz P. Tailored HIV programmes and universal health coverage. *Bull World Health Organ* 2020; **98**: 87-94 [PMID: [32015578](#) DOI: [10.2471/BLT.18.223495](#)]
- 68 **Hallas D**, Klar RT, Baldyga JA, Rattner I, Waingortin R, Fletcher J. Traditional and Nontraditional Collaborations to Improve Population Health Using Geospatial Information System Maps: Analysis of the Opioid Crisis. *J Pediatr Health Care* 2019; **33**: 309-322 [PMID: [30902507](#) DOI: [10.1016/j.pedhc.2018.10.006](#)]

- 69 **Dworkis DA**, Weiner SG, Liao VT, Rabickow D, Goldberg SA. Geospatial Clustering of Opioid-Related Emergency Medical Services Runs for Public Deployment of Naloxone. *West J Emerg Med* 2018; **19**: 641-648 [PMID: [30013698](#) DOI: [10.5811/westjem.2018.4.37054](#)]
- 70 **Hedegaard H**, Miniño AM, Warner M. Drug Overdose Deaths in the United States, 1999–2017. NCHS Data Brief: National Center for Health Statistics, 2018. Available from: <https://stacks.cdc.gov/view/cdc/112340>
- 71 **Ohio Opioid Summary (March 2019)**. National Institute on Drug Abuse (NIDA), 2019. Available from: <https://nida.nih.gov/drug-topics/publications/drug-facts>
- 72 **Hernandez A**, Branscum AJ, Li J, MacKinnon NJ, Hincapie AL, Cuadros DF. Epidemiological and geospatial profile of the prescription opioid crisis in Ohio, United States. *Sci Rep* 2020; **10**: 4341 [PMID: [32152360](#) DOI: [10.1038/s41598-020-61281-y](#)]
- 73 **Feinberg J**. Tackle the epidemic, not the opioids. *Nature* 2019; **573**: 165 [PMID: [31501585](#) DOI: [10.1038/d41586-019-02671-9](#)]
- 74 **Goodnough A**. This City's Overdose Deaths Have Plunged. Can Others Learn From It? *New York Times* 2018 [DOI: [10.1002/catl.30440](#)]
- 75 **Guy GJ**, Haegerich T, Evans M, Losby J, Young R, Jones C. Vital Signs: Pharmacy-Based Naloxone Dispensing — United States, 2012–2018. *MMWR Morb Mortal Wkly Rep* 2019; 2019 [DOI: [10.15585/mmwr.mm6831e1](#)]
- 76 **Visconti AJ**, Santos GM, Lemos NP, Burke C, Coffin PO. Opioid Overdose Deaths in the City and County of San Francisco: Prevalence, Distribution, and Disparities. *J Urban Health* 2015; **92**: 758-772 [PMID: [26077643](#) DOI: [10.1007/s11524-015-9967-y](#)]
- 77 **Cerdá M**, Ransome Y, Keyes KM, Koenen KC, Tardiff K, Vlahov D, Galea S. Revisiting the role of the urban environment in substance use: the case of analgesic overdose fatalities. *Am J Public Health* 2013; **103**: 2252-2260 [PMID: [24134362](#) DOI: [10.2105/AJPH.2013.301347](#)]
- 78 **Green CR**, Ndao-Brumblay SK, West B, Washington T. Differences in prescription opioid analgesic availability: comparing minority and white pharmacies across Michigan. *J Pain* 2005; **6**: 689-699 [PMID: [16202962](#) DOI: [10.1016/j.jpain.2005.06.002](#)]
- 79 **Burgess DJ**, Phelan S, Workman M, Hagel E, Nelson DB, Fu SS, Widome R, van Ryn M. The effect of cognitive load and patient race on physicians' decisions to prescribe opioids for chronic low back pain: a randomized trial. *Pain Med* 2014; **15**: 965-974 [PMID: [24506332](#) DOI: [10.1111/pme.12378](#)]
- 80 **Humphreys K**. Avoiding globalisation of the prescription opioid epidemic. *Lancet* 2017; **390**: 437-439 [PMID: [28792397](#) DOI: [10.1016/S0140-6736\(17\)31918-9](#)]
- 81 **VanGeest JB**, Johnson TP, Alemagno SA. Research methods in the study of substance abuse. New York: Springer, 2017
- 82 **Monnat SM**. Drugs, alcohol, and suicide represent growing share of US mortality. 2017. Available from: <https://scholars.unh.edu/carsey/292/>
- 83 **Monnat SM**. Factors Associated With County-Level Differences in U.S. Drug-Related Mortality Rates. *Am J Prev Med* 2018; **54**: 611-619 [PMID: [29598858](#) DOI: [10.1016/j.amepre.2018.01.040](#)]
- 84 **Cobert J**, Lantos PM, Janko MM, Williams DGA, Raghunathan K, Krishnamoorthy V, JohnBull EA, Barbeito A, Gulur P. Geospatial Variations and Neighborhood Deprivation in Drug-Related Admissions and Overdoses. *J Urban Health* 2020; **97**: 814-822 [PMID: [32367203](#) DOI: [10.1007/s11524-020-00436-8](#)]
- 85 **Penm J**, MacKinnon NJ, Boone JM, Ciaccia A, McNamee C, Winstanley EL. Strategies and policies to address the opioid epidemic: A case study of Ohio. *J Am Pharm Assoc (2003)* 2017; **57**: S148-S153 [PMID: [28189539](#) DOI: [10.1016/j.japh.2017.01.001](#)]
- 86 **ESRI**. ArcGIS Pro.x. Redlands, CA, USA: ESRI Press, 2020: 427
- 87 **R Development Core Team**. R: A Language and Environment for Statistical Computing 2008. Available from: <https://peerj.com/preprints/26489v1/#supp-2>



Published by **Baishideng Publishing Group Inc**
7041 Koll Center Parkway, Suite 160, Pleasanton, CA 94566, USA

Telephone: +1-925-3991568

E-mail: bpgoffice@wjgnet.com

Help Desk: <https://www.f6publishing.com/helpdesk>

<https://www.wjgnet.com>

