

World Journal of *Gastroenterology*

World J Gastroenterol 2023 March 7; 29(9): 1395-1538



REVIEW

- 1395 Molecular mechanisms targeting drug-resistance and metastasis in colorectal cancer: Updates and beyond
Al Bitar S, El-Sabban M, Doughan S, Abou-Kheir W
- 1427 Clinical impact of artificial intelligence-based solutions on imaging of the pancreas and liver
Berbis MA, Paulano Godino F, Royuela del Val J, Alcalá Mata L, Luna A

MINIREVIEWS

- 1446 Role of noncoding RNAs in liver fibrosis
Li QY, Gong T, Huang YK, Kang L, Warner CA, Xie H, Chen LM, Duan XQ
- 1460 Approach to thromboelastography-based transfusion in cirrhosis: An alternative perspective on coagulation disorders
Kataria S, Juneja D, Singh O

ORIGINAL ARTICLE

Basic Study

- 1475 Adenosine 2A receptor contributes to the facilitation of post-infectious irritable bowel syndrome by $\gamma\delta$ T cells via the PKA/CREB/NF- κ B signaling pathway
Dong LW, Chen YY, Chen CC, Ma ZC, Fu J, Huang BL, Liu FJ, Liang DC, Sun DM, Lan C

Retrospective Cohort Study

- 1492 Supply and quality of colonoscopy according to the characteristics of gastroenterologists in the French population-based colorectal-cancer screening program
Koivogui A, Vincelet C, Abihsera G, Ait-Hadad H, Delattre H, Le Trung T, Bernoux A, Carroll R, Nicolet J
- 1509 Comprehensively evaluate the short outcome of small bowel obstruction: A novel medical-economic score system
Xu WX, Zhong QH, Cai Y, Zhan CH, Chen S, Wang H, Tu PS, Chen WX, Chen XQ, Zhang JR

SCIENTOMETRICS

- 1523 Global trend and future landscape of intestinal microcirculation research from 2000 to 2021: A scientometric study
Fu SJ, Xu MT, Wang B, Li BW, Ling H, Li Y, Wang Q, Liu XT, Zhang XY, Li AL, Liu MM

LETTER TO THE EDITOR

- 1536 Thiopurines are an independent risk factor for active tuberculosis in inflammatory bowel disease patients
Fortes FML, Rocha R, Santana GO

ABOUT COVER

Editorial Board Member of *World Journal of Gastroenterology*, Dirk Jacob van Leeuwen, MD, PhD, FAASLD, Adjunct Professor, Section of Gastroenterology and Hepatology, Geisel School of Medicine at Dartmouth College, Hanover, NH 03756, United States. dirk.j.vanleeuwen@gmail.com

AIMS AND SCOPE

The primary aim of *World Journal of Gastroenterology* (WJG, *World J Gastroenterol*) is to provide scholars and readers from various fields of gastroenterology and hepatology with a platform to publish high-quality basic and clinical research articles and communicate their research findings online. WJG mainly publishes articles reporting research results and findings obtained in the field of gastroenterology and hepatology and covering a wide range of topics including gastroenterology, hepatology, gastrointestinal endoscopy, gastrointestinal surgery, gastrointestinal oncology, and pediatric gastroenterology.

INDEXING/ABSTRACTING

The WJG is now abstracted and indexed in Science Citation Index Expanded (SCIE, also known as SciSearch®), Current Contents/Clinical Medicine, Journal Citation Reports, Index Medicus, MEDLINE, PubMed, PubMed Central, Scopus, Reference Citation Analysis, China National Knowledge Infrastructure, China Science and Technology Journal Database, and Superstar Journals Database. The 2022 edition of Journal Citation Reports® cites the 2021 impact factor (IF) for WJG as 5.374; IF without journal self cites: 5.187; 5-year IF: 5.715; Journal Citation Indicator: 0.84; Ranking: 31 among 93 journals in gastroenterology and hepatology; and Quartile category: Q2. The WJG's CiteScore for 2021 is 8.1 and Scopus CiteScore rank 2021: Gastroenterology is 18/149.

RESPONSIBLE EDITORS FOR THIS ISSUE

Production Editor: *Ying-Yi Yuan*; Production Department Director: *Xiang Li*; Editorial Office Director: *Jia-Ru Fan*.

NAME OF JOURNAL

World Journal of Gastroenterology

ISSN

ISSN 1007-9327 (print) ISSN 2219-2840 (online)

LAUNCH DATE

October 1, 1995

FREQUENCY

Weekly

EDITORS-IN-CHIEF

Andrzej S Tarnawski

EDITORIAL BOARD MEMBERS

<http://www.wjgnet.com/1007-9327/editorialboard.htm>

PUBLICATION DATE

March 7, 2023

COPYRIGHT

© 2023 Baishideng Publishing Group Inc

INSTRUCTIONS TO AUTHORS

<https://www.wjgnet.com/bpg/gerinfo/204>

GUIDELINES FOR ETHICS DOCUMENTS

<https://www.wjgnet.com/bpg/GerInfo/287>

GUIDELINES FOR NON-NATIVE SPEAKERS OF ENGLISH

<https://www.wjgnet.com/bpg/gerinfo/240>

PUBLICATION ETHICS

<https://www.wjgnet.com/bpg/GerInfo/288>

PUBLICATION MISCONDUCT

<https://www.wjgnet.com/bpg/gerinfo/208>

ARTICLE PROCESSING CHARGE

<https://www.wjgnet.com/bpg/gerinfo/242>

STEPS FOR SUBMITTING MANUSCRIPTS

<https://www.wjgnet.com/bpg/GerInfo/239>

ONLINE SUBMISSION

<https://www.f6publishing.com>



Basic Study

Adenosine 2A receptor contributes to the facilitation of post-infectious irritable bowel syndrome by $\gamma\delta$ T cells via the PKA/CREB/NF- κ B signaling pathway

Li-Wei Dong, Yi-Yao Chen, Chao-Chao Chen, Zhi-Chao Ma, Jiao Fu, Bai-Li Huang, Fu-Jin Liu, Dong-Chun Liang, De-Ming Sun, Cheng Lan

Specialty type: Gastroenterology and hepatology

Provenance and peer review:

Unsolicited article; Externally peer reviewed.

Peer-review model: Single blind

Peer-review report's scientific quality classification

Grade A (Excellent): A
Grade B (Very good): B
Grade C (Good): C
Grade D (Fair): 0
Grade E (Poor): 0

P-Reviewer: Lee EW, South Korea; Shin CM, South Korea; Yashiro M, Japan

Received: December 5, 2022

Peer-review started: December 5, 2022

First decision: January 2, 2023

Revised: January 11, 2023

Accepted: February 22, 2023

Article in press: February 22, 2023

Published online: March 7, 2023



Li-Wei Dong, Yi-Yao Chen, Chao-Chao Chen, Zhi-Chao Ma, Jiao Fu, Bai-Li Huang, Fu-Jin Liu, Cheng Lan, Department of Gastroenterology, Hainan General Hospital, Affiliated Hainan Hospital, Hainan Medical University, Haikou 570311, Hainan Province, China

Dong-Chun Liang, De-Ming Sun, Doheny Eye Institute, Department of Ophthalmology, David Geffen School of Medicine, University of California Los Angeles, Los Angeles, CA 90033, United States

Corresponding author: Cheng Lan, MD, PhD, Chief Doctor, Professor, Department of Gastroenterology, Hainan General Hospital, Affiliated Hainan Hospital, Hainan Medical University, No. 19 Xiuhua Road, Xiuying District, Haikou 570311, Hainan Province, China. lancheng71@163.com

Abstract

BACKGROUND

Immunological dysfunction-induced low-grade inflammation is regarded as one of the predominant pathogenetic mechanisms in post-infectious irritable bowel syndrome (PI-IBS). $\gamma\delta$ T cells play a crucial role in innate and adaptive immunity. Adenosine receptors expressed on the surface of $\gamma\delta$ T cells participate in intestinal inflammation and immunity regulation.

AIM

To investigate the role of $\gamma\delta$ T cell regulated by adenosine 2A receptor (A2AR) in PI-IBS.

METHODS

The PI-IBS mouse model has been established with *Trichinella spiralis* (*T. spiralis*) infection. The intestinal A2AR and A2AR in $\gamma\delta$ T cells were detected by immunohistochemistry, and the inflammatory cytokines were measured by western blot. The role of A2AR on the isolated $\gamma\delta$ T cells, including proliferation, apoptosis, and cytokine production, were evaluated *in vitro*. Their A2AR expression was measured by western blot and reverse transcription polymerase chain reaction (RT-PCR). The animals were administered with A2AR agonist, or A2AR antagonist. Besides, $\gamma\delta$ T cells were also injected back into the animals, and the

parameters described above were examined, as well as the clinical features. Furthermore, the A2AR-associated signaling pathway molecules were assessed by western blot and RT-PCR.

RESULTS

PI-IBS mice exhibited elevated ATP content and A2AR expression ($P < 0.05$), and suppression of A2AR enhanced PI-IBS clinical characteristics, indicated by the abdominal withdrawal reflex and colon transportation test. PI-IBS was associated with an increase in intestinal T cells, and cytokine levels of interleukin-1 (IL-1), IL-6, IL-17A, and interferon- α (IFN- α). Also, $\gamma\delta$ T cells expressed A2AR *in vitro* and generated IL-1, IL-6, IL-17A, and IFN- α , which can be controlled by A2AR agonist and antagonist. Mechanistic studies demonstrated that the A2AR antagonist improved the function of $\gamma\delta$ T cells through the PKA/CREB/NF- κ B signaling pathway.

CONCLUSION

Our results revealed that A2AR contributes to the facilitation of PI-IBS by regulating the function of $\gamma\delta$ T cells *via* the PKA/CREB/NF- κ B signaling pathway.

Key Words: Irritable bowel syndrome; Adenosine 2A receptor; $\gamma\delta$ T cells; Post-infectious irritable bowel syndrome; Signaling pathway; Regulation

©The Author(s) 2023. Published by Baishideng Publishing Group Inc. All rights reserved.

Core Tip: Immunological dysfunction-induced low-grade inflammation is regarded as one of the most important pathogenetic mechanisms in post-infectious irritable bowel syndrome. $\gamma\delta$ T cells play a crucial role in innate and adaptive immunity. The adenosine molecule and receptors regulate intestinal inflammation and immunity. Through the PKA/CREB/NF- κ B signaling pathway, we showed that adenosine 2A receptor contributes to the facilitation of post-infectious irritable bowel syndrome by T cells.

Citation: Dong LW, Chen YY, Chen CC, Ma ZC, Fu J, Huang BL, Liu FJ, Liang DC, Sun DM, Lan C. Adenosine 2A receptor contributes to the facilitation of post-infectious irritable bowel syndrome by $\gamma\delta$ T cells *via* the PKA/CREB/NF- κ B signaling pathway. *World J Gastroenterol* 2023; 29(9): 1475-1491

URL: <https://www.wjgnet.com/1007-9327/full/v29/i9/1475.htm>

DOI: <https://dx.doi.org/10.3748/wjg.v29.i9.1475>

INTRODUCTION

Irritable bowel syndrome (IBS), a functional gastrointestinal disorder with abnormal bowel habits and/or faecal traits, has been increasing in prevalence in developing countries since 1990[1]. The concept of post-infectious IBS (PI-IBS) was derived from clinical observations of patients with previous acute gastrointestinal infections[2]. Patients often suffer from refractory discomfort, low quality of life, and high healthcare economic burden, but current treatments reap unsatisfactory therapeutic results due to the lack of specific targets[3]. Numerous studies in the literature have shown that 1/3 of IBS patients have a history of gastrointestinal infection, suggesting that a persistent inflammatory response may explain the inconsistency between the intestinal response of PI-IBS patients and the normal gut[4]. Therefore, researchers generally agree that PI-IBS is also essentially a post-inflammatory immune dysfunction[5] and that reducing the intestinal inflammatory response is expected to improve clinical symptoms and life quality. For the potential therapeutic target of PI-IBS, upregulation of EphA2 expression and activation of the NF- κ B signaling pathway have been reported to alleviate PI-IBS-related symptoms[6], while miRNA-510 has also been proved to regulate the intestinal inflammatory response in PI-IBS by targeting PRDX1[7].

$\gamma\delta$ T cells are a subpopulation of T lymphocytes with a distinct phenotype and function, although they represent only a small proportion of the total T cells. $\gamma\delta$ T cells bridge the gap between innate and adaptive immunity, determining the type of immune response and maintaining homeostasis in mucosal tissues. In inflammatory and immune responses, $\gamma\delta$ T cells play a complex dual role depending on the context. On the one hand, $\gamma\delta$ T cells present antigens to immune cells and trigger the recognition of these antigens by immune cells, leading to an adaptive immune response, promoting the secretion of chemokines and cytokines, and recruiting inflammatory cells[8,9]. On the other hand, $\gamma\delta$ T cells inhibit the inflammatory process by conducting regulatory cytokines such as interferon- α (IFN- α), interleukin-10 (IL-10), tumor necrosis factor- α (TNF- α), and IL-17 and eliminating over-activated inflammatory effector cells such as macrophages and polymorphonuclear leukocytes through cytotoxic effects[10]. In animal models of experimental autoimmune encephalomyelitis, rheumatoid arthritis and non-fatty

diabetes, $\gamma\delta$ T cells are proved to be the causative factor whereas rats with colitis and sepsis and mice with EAU were found to benefit from their presence[11]. According to our previous research, we have demonstrated that $\gamma\delta$ T cells could alleviate PI-IBS through promoting Th17 polarization *via* their HSP70 receptor[12].

One of the many receptors expressed on the surface of $\gamma\delta$ T cells is adenosine 2A receptor (A2AR), a classical G protein-coupled receptor with a high affinity for adenosine (ADO)[13]. A2AR is expressed in many immune cells, such as regulatory T cells, cytotoxic T cells, macrophages, *etc.* Its homologous family members include four isoforms, namely A1R, A2aR, A2bR, and A3R. These ARs are distributed in different tissues. For example, A1R is in the small intestine, A2aR and A2bR are in the cecum and colon, and A3R is in the ileum and colon[14]. A2AR forms the CD39-CD73-A2AR adenosine metabolic pathway with CD39 and CD73: first, CD39 cleaves extracellular ATP into AMP, which then binds to CD73 and is converted to ADO by CD73. ADO then binds to A2AR, which in turn interacts with Gs family proteins to increase intracellular cAMP levels and activate the downstream PKA/CREB-related pathway. Thus, the adenosine-A2AR pathway plays an important role in protecting normal organs and tissues from the autoimmune response of immune cells[15-17]. There are fewer reports on A2AR and intestinal inflammatory injury. Researchers have found that ADO can inhibit intestinal inflammatory injury in chronically septic mice *via* interacting with A1AR and A2AR[18]. And according to the research from Hou *et al*[19], electroacupuncture reduced visceral pain in rats with inflammatory bowel disease by interfering with adenosine receptors. However, there are no studies correlating A2AR with the pathogenesis of IBS, especially PI-IBS. Recently, Sun *et al*[20] reported that A2AR is able to bind to mGluR5 and exhibits a unique role in maintaining the function of the intestinal barrier in enteric glial cells against hypoxia-induced cellular damage. The above findings suggest that ARs, especially the A2AR isoform, may play a key role in the pathogenesis of PI-IBS and could potentially be a novel target for intervention in PI-IBS progression.

Hence, considering that the correlation between A2AR and PI-IBS remains unclear, the function of A2AR on the surface of $\gamma\delta$ T cells has not been fully elucidated, and the precise A2AR-related signaling pathway mediating PI-IBS progression in $\gamma\delta$ T cells awaits to be explored. It is an urgent issue to evaluate the role of A2AR in regulating $\gamma\delta$ T cells on PI-IBS pathogenesis.

MATERIALS AND METHODS

Animals and experimental design

Ninety-six female 57BL/6 mice were provided by the Medical Animal Center of the Hainan Medical College. All animals were housed in a sterile, suitable environment and fed *ad libitum* with food and water that met cleanliness standards. The animals used in the experiments were cared for and handled by the Chinese Guide for Laboratory Animals. The experimental procedures were examined and approved by the Animal Care and Utilization Committee of Hainan.

Animals were randomly divided into 4 groups ($n = 24$ per group): The control group, the PI-IBS group, the IBS + SCH58261 group, and the IBS + CGS21680 group. A quarter of mice were killed in each group, then intestinal A2AR protein and mRNA levels, cytokine expression and secretion plus signaling pathway activation were investigated, respectively. Another six mice were used for $\gamma\delta$ T cell isolation. The remaining mice were used for A2AR lentivirus infection and cell reinfusion assay.

PI-IBS Model

The *Trichinella spiralis* (*T. spiralis*) infected the mice as described earlier in Lanzhou Animal Medical Institute[21,22]. Briefly, parasite larvae were isolated from cysts of SD rats, which have been infected with *T. spiralis* for 60 d and digested with 1.5% pepsin. Mice were then fed with larvae, which were resuspended in 0.2 mL of saline (300 larvae per mouse). At the same time, the control group was only fed with 0.9% saline.

Histopathological analysis

After 8 wk of infection, animals were euthanized, meanwhile, their ileal tissues were fixed with 10% formalin at 4 °C for 10 d, then dried in ethanol, and embedded in paraffin. The 5 micrometers sections were made. After dewaxing and hydration, they were stained with hematoxylin-eosin (HE). In addition, HE staining was used to assess inflammation scores according to a previous scoring system[23].

Abdominal withdrawal reflex

The abdominal withdrawal reflex (AWR) was administered to assess visceral hypersensitivity[24]. A catheter and air chamber were introduced *via* the anus of sedated animals. The air chamber was inflated to a capacity of 0.25/0.35/0.5/0.66 mL in 15 min on a number of occasions. The animals were allowed 30 s of rest between each distending period. The AWR criterion for scoring: When stimulated, the animals' mood is stable, 0 points; if they are unstable, occasionally bending their necks, 1 point; slightly contracting their abdomen and back muscles, 2 points; intensively contracting their abdomen muscles

and lifting the abdomen from the ground, 3 points; intensively contracting abdomen muscles, bowing abdomen, and lifting abdomen and perineum, 4 points.

Colon transportation test and stool scale

The colon transit test (CTT) was used to assess intestinal motility. After ingesting 0.4 mL of active carbon, the timing was documented. The entire feces collected during 8 h were graded using the Bristol stool scale: 1 point for normal-shaped stools; 2 points for stools that are soft or malformed; 3 points for stools that are watery[25].

Immunohistochemistry

Immunohistochemistry was performed on the cells as previously described[26]. Briefly, cells were fixed in suspension with 4% PFA for uniform distribution on the slides. After rinsing in phosphate-buffered saline (PBS), slides were incubated with anti-mouse A2AR monoclonal antibody (1:150; Abcam, Cambridge, United Kingdom) overnight at 4 °C and then with HRP secondary antibody (SP-9001, Beijing Sequoia Jinqiao, Beijing, China) for 1 h at room temperature. Reactivity was detected using the DAB reagent (Beijing Sequoia Jinqiao, Beijing, China). The primary antibody was substituted with PBS as a negative control. As the cell membrane was the main localization site of A2AR, the expression of A2AR was evaluated by a semi-quantitative integration technique. A2AR protein expression staining intensity was rated as 0 (no staining), 1 (weak staining), 2 (moderate staining), and 3 (strong staining). The percentage of positively stained cells in the visual field was categorized as 0 (5%), 1 (5%-25%), 2 (26%-50%), 3 (51%-75%), or 4 (> 75%). The evaluation was represented as the product of the positive rate score and staining intensity score, with a score of greater than or equal to 6 indicating a favorable evaluation. The above staining was examined using Nikon DR-Si2 cell counting software and digital image analysis was employed. Moreover, the scoring was done in a double-blind way, which was confirmed by two pathologists who were not involved in this study and unaware of the clinical-pathological data.

Western blotting

Western blot was used to detect altered protein expression. Ileal tissue samples were lysed with RIPA coupled with brief ultrasonic pulverization. After lysis was completed, the homogenate was centrifuged at 4 °C for 30 min, the precipitate was discarded and the supernatant was retained. The protein content of the supernatant was determined by the Bradford method. 40 µg of protein was taken for SDS-PAGE gel electrophoresis, and the protein blot was transferred to the PVDF membrane. Transfer conditions: β-actin, A2AR (200 mA, 90 min); PKA, p-PKA (200 mA, 120 min followed by 300 mA, 30 min); CREB, p-CREB (200 mA, 20 min followed by 300 mA, 15 min); NF-κB (200 mA, 120 min); claudin-1 (200 mA, 70 min), occludin (200 mA, 120 min); ZO-1 (200 mA, 120 min followed by 300 mA, 60 min); IL-1β (200 mA, 50 min); IL-6 (200 mA, 70 min); IL-17A (200 mA, 50 min); IFN-α (200 mA, 60 min). The primary antibodies presented in Table 1 were rabbit anti-mouse multi-clonal.

The diluted primary antibodies were incubated with the PVDF membrane at 4 °C for over 12 h. On the following day, the membrane was rinsed with TBST for three times, and ECL chemiluminescent test was performed. In a dark setting, the grayscale value was identified by improved chemiluminescence. The protein/actin grayscale value represented the relative protein expression level.

Real-time quantitative polymerase chain reaction

mRNA alteration was determined through Real-time quantitative polymerase chain reaction (PCR). Briefly, RNA was extracted from the tissue of the terminal ileum by using Trizol and DNase I. Primers were constructed based on the gene sequences of mice (Table 2). β-Actin served as an internal reference. The RNA was then reverse transcribed to cDNA according to the steps of the TAKARA PrimeScript kit (TAKARA-RR047A), and real-time quantitative PCR was performed according to the following procedure: pre-denaturation at 94 °C for 5 min; denaturation at 94 °C for 1 min; 30 cycles of amplification and qualification at 57 °C and 60 °C; the ultimate step was prolongation at 72 °C for 7 min. Results are expressed as the ratio of target genes to control genes.

Measurement of ATP concentration

The tissue samples were sonicated and centrifuged at 4 °C for 15 min followed by the addition of double distilled water (1:9). The 10% homogenate was continued to be centrifuged at 3000 rpm for another 10 min. The supernatant was collected for subsequent analysis.

The ATP concentration was determined by the colorimetric method. Specifically, the OD value of the liquid in the colorimetric tube was measured at 636 nm. ATP concentration was calculated as: ATP concentration (mol/g prot) = (measured OD - control OD)/(standard OD - blank OD) × standard concentration (1000 mol/L)/sample concentration (g prot/L).

Isolation and purification of γδ T cells

γδ T cells were extracted from the spleen of animals[27]. Spleens were collected aseptically from 8 to 10-week female mice and stored in 1 × PBS on ice. Splenocytes were then isolated and red blood cells were

Table 1 The dilution ratio for primary antibodies

Primary antibodies	Dilution ratio
β -actin	1:1000
A2AR	1:500
NF- κ B	1:2000
PKA	1:1000
p-PKA	1:2000
CREB	1:1000
p-CREB	1:1000
ZO-1	1:1000
Occludin	1:1000
Claudin-1	1:1000
IL-1 β	1:1000
IL-6	1:1000
IL-17A	1:500
IFN- α	1:1000

A2AR: Adenosine 2A receptor; IL: Interleukin; IFN- α : Interferon- α .

Table 2 Primers used in this study

Name	Primer	Sequence	Size
β -actin	Forward	5'-CACGATGGAGGGGCCGACTCATC-3'	240 bp
	Reverse	5'-TAAAGACCTCTATGCCAACACAGT-3'	
NF- κ B	Forward	5'-CACCGGATTGAAGAGAAGCG-3'	194 bp
	Reverse	5'-AAGTTGATGGTGCTGAGGGA-3'	
CREB	Forward	5'-GCTGGCTAACAATGGTACGG-3'	230 bp
	Reverse	5'-CCATAACAACCTCCAGGGGCA-3'	
PKA	Forward	5'-GGGCGTGCTGATCTATGAGA -3'	169 bp
	Reverse	5'-TCGCTTTGTCAGATCCACCT-3'	
A2AR	Forward	5'-GCCTCTTCTTCGCCTGCTTGTGCC-3'	140 bp
	Reverse	5'-GCCCTTCGCCCTCATACCCGTCAC-3'	

lysed with a hypotonic solution. $\gamma\delta$ TCR cells were selected by depletion of CD11b, B220, CD4 and CD8 cells, negative selection using biotinylated antibodies and EasySep Biotin Positive Selection Kit (StemCell) according to the manufacturer's protocol.

The magnetic separation process was carried out as follows: Biotin Anti-CD11b, Biotin Anti-B220, Biotin Anti-CD4, and Biotin Anti-CD8 (1/100 \times dilution, 10 μ L/mL) were added respectively, then the whole system was mixed thoroughly and incubated at room temperature for 15 min. After that, 10 mL 1 \times PBS + 0.526 mmol/L EDTA + 2% FBS was added and rotated at 1.4 k for 5 min at 4 $^{\circ}$ C. Discarding the supernatant and then the cells were resuspended at 1 \times 10⁸ cells/mL in the mentioned buffer. Then, Biotin Select Cocktail (100 μ L/mL) was added and mixed thoroughly, following the incubation at room temperature for 15 min. Next, the beads from the EasySep kit were vortexed for 15 to 30 min and added (50 μ L/mL), the new system was mixed thoroughly and incubated at room temperature for 10 min. At room temperature, tubes were placed into silver EasySep magnets, incubated for 5 min, and the supernatant fraction was poured into a new 15 mL tube. Then the cells were counted for further cell sorting.

The antibodies for sorting were as follows: $\gamma\delta$ TCR Alexa 488 (1/100 \times dilution), CD8 PE (1/100 \times dilution), CD4 PerCP Cy5.5 (1/100 \times dilution), CD11b APC (1/100 \times dilution) and B220 PEcy7 (1/100 \times dilution). Before sorting, cells were stained at 4 $^{\circ}$ C for 30 min on ice with the mentioned antibodies.

Then, we washed the cells with $1 \times \text{PBS}$ and resuspended to 5×10^6 cells/mL for sorting[28].

Cell proliferation assays

The proliferation of isolated $\gamma\delta$ T cells was detected by CCK8 assay. Cells were resuspended in 100 μL of the medium at the density of 5×10^4 cells per well, then added to 96-well plates and waited for the cells to stick. After that, 100 nmol/L CGS-21680 or 1 $\mu\text{mol/L}$ SCH58261 was added to different wells of the 96-well plate, and the cells were continued to be cultured at 37°C with 5% CO_2 for more than half an hour. Finally, 20 μL CCK8 was added to each well and the incubation was continued at 37°C , 5% CO_2 for another 2 h, and the OD value at 450 nm was measured by Multiscan Spectrum.

Cell apoptosis assays

The extracted $\gamma\delta$ T cells were uniformly distributed in six-well plates (5×10^5 cells/well). Subsequently, 100 nmol/L CGS-21680 or 1 $\mu\text{mol/L}$ SCH58261 were added, respectively, and incubated at 37°C with 5% CO_2 for 0.5 h. After that, the apoptosis rate was detected by fluorescence-activated cell sorting (FACS).

Cytokines production

ELISA was performed to determine the levels of IL-1 β , IL-6, IL-17A, and IFN- α in cultivated $\gamma\delta$ T cells and colonic tissue supernatants. Specifically, the original supernatant was removed and replaced with a new medium (RPMI-1640), and typical culture conditions were re-established for another 24 h. The content of cytokine proteins in the supernatant was quantitatively analyzed by using IL-1, IL-6, IL-17A, and IFN- α high sensitivity (0.25-16 pg/mL sensitivity range) ELISA kits (R&D Systems, Minneapolis, Minnesota, United States) according to the manufacturer's instructions.

Cell reinfusion

Isolated $\gamma\delta$ T cells were treated with SCH58261 or CGS21680 at 37°C , 5% CO_2 for 48 h. The cell concentration was then adjusted to 2×10^6 cells/mL with RPMI-1640. Mice were injected separately with $\gamma\delta$ T cells at an inoculum of 2×10^6 cells per mouse. Clinical characteristics were observed as described previously.

Transient transfection

LV-mA2AR-shRNA was synthesized by Fubio (Suzhou) Biopharmaceutical Technology Co., Ltd. and Suzhou Genepharma Co., Ltd. The sequence is as follows: the sense is 5'-GGAGACAGCUGA-AGCAGAUUTT-3'; the antisense sequence is 5'-AUCUGCUUCAGCUCUCUCCTT-3'. The HEK293T A2AR knock-down cell line was obtained by transfecting LV-mA2AR-shRNA with $\gamma\delta$ T cells and incubating at 37°C for 48 h after transfection. Similarly, the HEK293T cell line infected with a negative control sequence (sh-NC) was constructed.

Statistical analysis

Data are represented as mean \pm SD. All data were analyzed using Grubb's test, followed by one-way analysis of variance (ANOVA) and Levene's test to assess the homogeneity of variance, and finally Duncan's multiple comparison test for multiple comparisons (SPSS 22.0 software). $P < 0.05$ were considered statistically significant.

RESULTS

The establishment of PI-IBS mouse model and the impact of A2AR on PI-IBS

First, we chose the *T. spiralis* infection to construct the PI-IBS mouse model. On day 56 after the *T. spiralis* infection, the model was evaluated, which demonstrated that there was no obvious inflammation in the animal colon (Figure 1), but the AWR rating was significantly higher than that of the control group, and the results of CTT experiment were significantly abnormal, as shown by the shortened first black stool time and a higher Bristol stool level (Tables 3 and 4). This indicated that a successful PI-IBS mouse model has been established.

After that, we applied the A2AR agonist or antagonist to PI-IBS mice in order to find potential interventions for curing PI-IBS. A further novel finding was that only the injection of A2AR antagonist SCH58261 significantly relieved the severe clinical manifestations of the model animal whereas A2AR agonist CGS21680 could not. At this stage of understanding, these findings suggest that A2AR may have a crucial impact on the development of PI-IBS.

The intestinal levels of ATP and A2AR expression are upregulated in PI-IBS mice

To further assess the relationship between A2AR and PI-IBS, we compared the altered expression of A2AR and ATP content in mice with PI-IBS or in normal mice, as A2AR plays a vital role in the conversion of ATP. From the results, it is clear that compared with the control group, intestinal ATP

Table 3 The effect of adenosine 2A receptor on the abdominal withdrawal reflex score in post-infectious irritable bowel syndrome mouse

Distending air volume (mL)	AWR			
	0.25	0.35	0.5	0.65
Control (<i>n</i> = 6)	0.00 ± 0.00	1.67 ± 0.05	2.52 ± 0.18	3.65 ± 0.08
PI-IBS (<i>n</i> = 6)	0.00 ± 0.00	2.13 ± 0.12 ^a	3.15 ± 0.14	3.90 ± 0.15
IBS + SCH58261 (<i>n</i> = 6)	0.00 ± 0.00	1.79 ± 0.12 ^c	2.90 ± 0.25	3.57 ± 0.05
IBS + CGS21680 (<i>n</i> = 6)	0.00 ± 0.00	2.01 ± 0.42	3.09 ± 0.53	3.62 ± 0.11

^a*P* < 0.05 *vs* the control group.^c*P* < 0.05 *vs* the PI-IBS group.

AWR: Abdominal withdrawal reflex; PI-IBS: Post-infectious irritable bowel syndrome.

Table 4 The effect of adenosine 2A receptor on the intestinal mobility in post-infectious irritable bowel syndrome mouse

Group	First black stool time (min)	Bristol stool grade
Control (<i>n</i> = 6)	407 ± 10.33	1.00 ± 0.00
PI-IBS (<i>n</i> = 6)	132 ± 12.59 ^a	2.67 ± 0.52 ^a
IBS + SCH58261 (<i>n</i> = 6)	246 ± 14.20 ^c	1.33 ± 0.51 ^c
IBS + CGS21680 (<i>n</i> = 6)	168 ± 11.38	2.66 ± 0.54

^a*P* < 0.05 *vs* the control group.^c*P* < 0.05 *vs* the PI-IBS group.

PI-IBS: Post-infectious irritable bowel syndrome.

levels in PI-IBS mice rose considerably (*P* < 0.01, **Figure 2A**) as did A2AR protein expression (*P* < 0.01, **Figure 2B-D**). Intestinal ATP levels and A2AR expression were further enhanced when the PI-IBS mice were treated with the A2AR agonist CGS21680 (*P* < 0.05, **Figure 2A-D**). At the same time, the levels of inflammatory factors such as IL-1, IL-6, IL-17, and IFN- α were also further boosted compared to the PI-IBS model group (**Figure 2E-G**). Interestingly, when SCH58261, an antagonist of A2AR, was administered in PI-IBS mice, the significant increase in ATP levels and the up-regulation of A2AR expression triggered by PI-IBS was reversed (**Figure 2A-D**), followed by the drop of inflammatory factors' expression compared with the PI-IBS group, including IL-1, IL-6, IL-17 and IFN- α (**Figure 2E-G**).

Intestinal epithelial tight junctions (TJs) proteins, such as ZO-1, Occludin, and Claudin-1, play a vital role in maintaining the epithelial barrier function to restrict the paracellular movement of harmful substances across intestinal mucosa[29]. The disruption of the TJs barrier could increase dysregulated immune reactions, such as the activation of mucosal immune response and the permeation of noxious molecules, and thus inducing gut inflammation[30,31]. Thus, we next tested the change of ZO-1, occludin, and claudin-1 expression. As we can see, the expression of TJ proteins ZO-1, Occludin, and Claudin-1 was sharply reduced in PI-IBS mice compared to the control, while agonism of A2AR further inhibited the expression of the proteins mentioned above. In line with the results in **Figure 2A-D**, treatment with the antagonism of A2AR SCH58261 also reversed the decreased expression of ZO-1, Occludin, and Claudin-1 in the PI-IBS group (**Figure 2H-I**). The results of the experiment found clear support for the hypothesis that A2AR is crucial to the pathophysiology of PI-IBS.

The upregulated A2AR in $\gamma\delta$ T cells attributes to PI-IBS progression

It has been previously reported that the intestinal $\gamma\delta$ T cells could exert an important role in a PI-IBS mouse model[32]. However, we wanted to further corroborate whether it is the altered A2AR expression in $\gamma\delta$ T cells that directly influences the pathogenesis of PI-IBS. Before starting the exploration, we first purified $\gamma\delta$ T cells. **Figure 3A-C** depicts the extraction and purification of $\gamma\delta$ T cells from the spleen of PI-IBS mice for subsequent *in vitro* functional assessment through FACS sorting. Presently, we examined the A2AR expression in unpurified $\gamma\delta$ T cells (the control group) and purified $\gamma\delta$ T cells (the $\gamma\delta$ T cell group) by immunohistochemical staining, respectively. The results were presented in **Figure 3D** and **E**. Notably, the A2AR expression level of $\gamma\delta$ T cells was significantly higher than that in the control group, suggesting that A2AR was mainly highly expressed in $\gamma\delta$ T cells. Furthermore, we treated $\gamma\delta$ T cells with A2AR agonist CGS21680 and A2AR antagonist SCH58261, respectively, and we can visualize through **Figure 3F** and **G** that the A2AR expression level was further

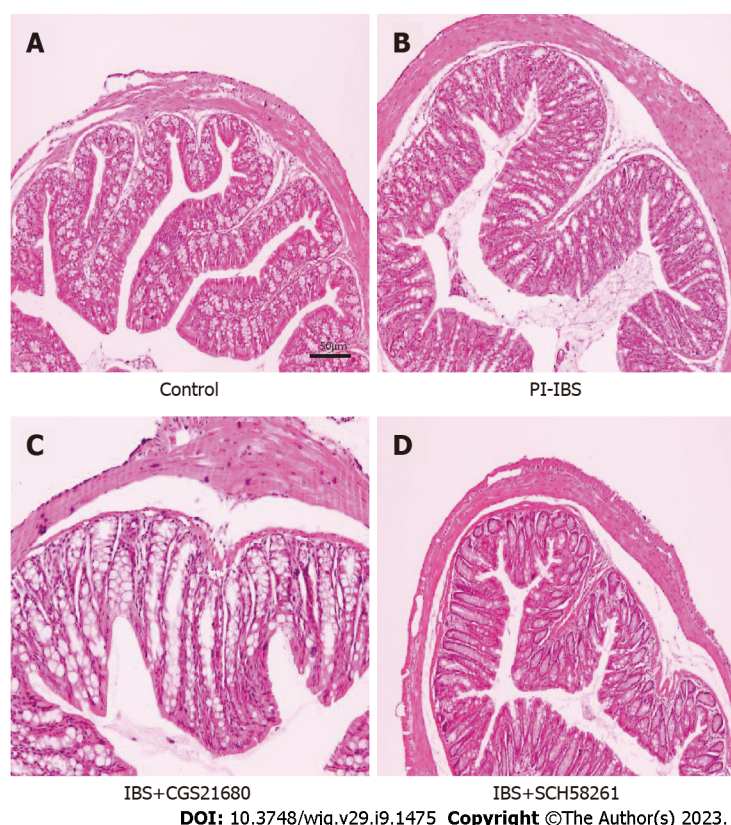


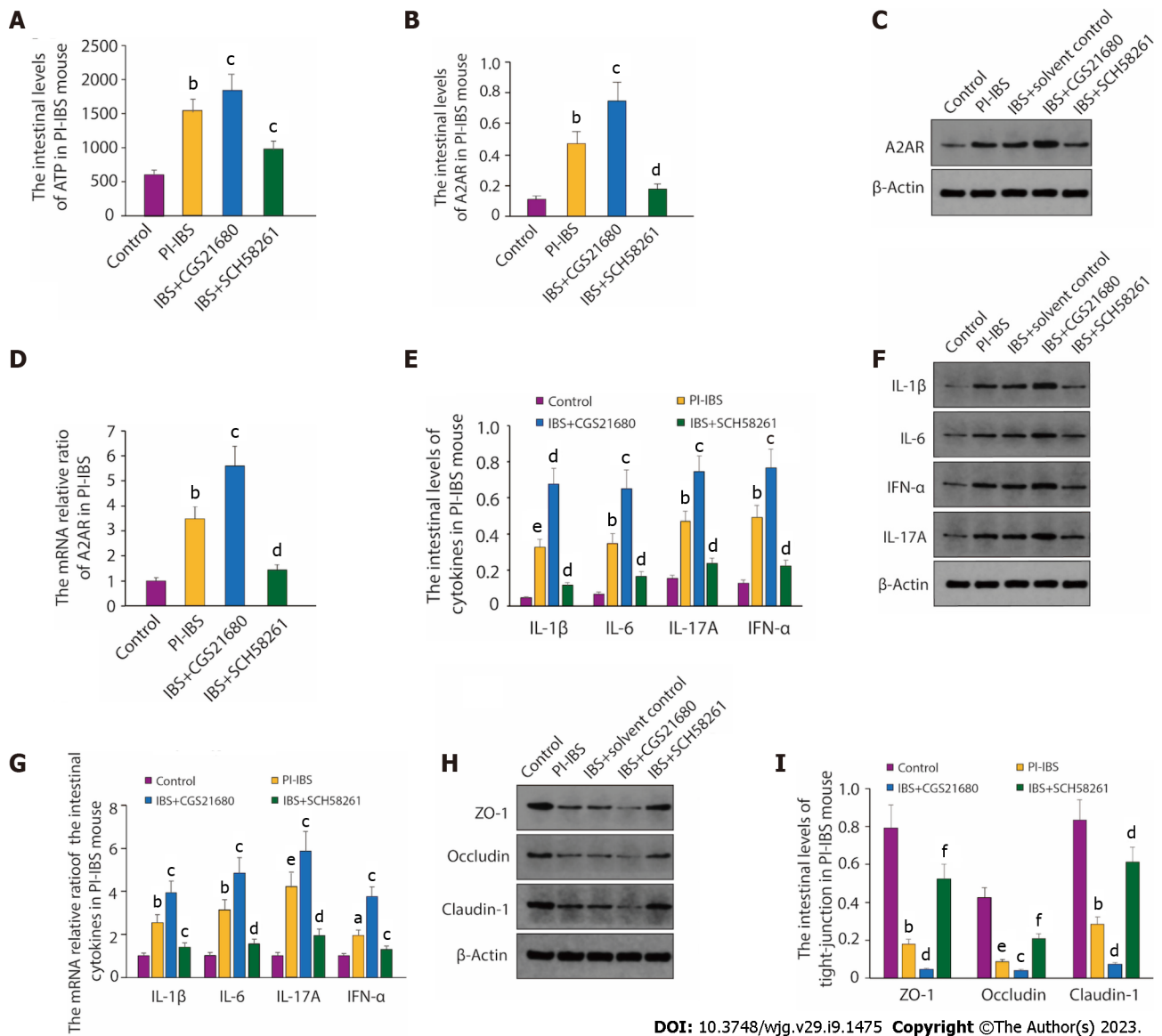
Figure 1 The effect of adenosine 2A receptor on the histopathological changes in post-infectious irritable bowel syndrome mouse. A and B: The Post-infectious irritable bowel syndrome (PI-IBS) model (B) exhibits no substantial inflammatory alterations in its colon tissue compared to the control animal (A); C: Adenosine 2A receptor (A2AR) agonist CGS21680 leads to some inflammatory alterations in the colon tissue of the PI-IBS model mice, including the infiltration of certain inflammatory cells; D: A2AR antagonist SCH58261 relieves inflammation in the colon tissue of the PI-IBS model mice. A2AR: Adenosine 2A receptor; PI-IBS: Post-infectious irritable bowel syndrome. Scale bars, 50 μ m.

enhanced in T cells treated with A2AR agonists, while the A2AR expression in T cells was significantly downregulated after the administration of SCH58261 to inhibit A2AR.

Besides, western blot and reverse transcription PCR results further confirmed the immunohistochemical findings: the agonist significantly increased both A2AR protein and mRNA level in $\gamma\delta$ T cells, whereas the antagonist did the opposite (Figure 3H-J). Taken together, these results revealed that $\gamma\delta$ T cells were the main immune cell subtype mediating the upregulation of A2AR expression in the intestinal immune microenvironment. By interfering with A2AR expression within $\gamma\delta$ T cells, the function of $\gamma\delta$ T cells might be affected, which could in turn interfere with disease progression throughout PI-IBS.

The viability and function maintenance of $\gamma\delta$ T cells is closely related to A2AR

To verify the conjecture of the previous chapter, we would like to further unveil the effect of A2AR on $\gamma\delta$ T-cells' viability and function. First, we assessed the correlation between A2AR and $\gamma\delta$ T-cell viability by the measurement of altered ATP content in $\gamma\delta$ T cells and the percentage of proliferating $\gamma\delta$ T cells. The results are shown in Figure 4A and B. When we treated $\gamma\delta$ T cells with the A2AR agonist CGS21680, both the intracellular ATP content and the percentage of proliferating cells increased compared with the control $\gamma\delta$ T cells, suggesting that A2AR activation could enhance the cell viability of $\gamma\delta$ T cells; whereas the intracellular ATP content and proliferating percentage both decreased when the antagonist of cellular A2AR, SCH58261, was given. Subsequently, we further evaluated whether the apoptosis of $\gamma\delta$ T cells was affected by A2AR, and the results demonstrated that inhibition of A2AR promoted the apoptosis of $\gamma\delta$ T cells, while activation of A2AR greatly inhibited the apoptosis process (Figure 4C and D). Finally, we examined the function of $\gamma\delta$ T cells. To be specific, we reinfused $\gamma\delta$ T cells that have been treated differently into PI-IBS mice. A similar pattern of results was obtained in the expression of inflammatory factors, including IL-1 β , IL-6, IL-17A and IFN- α in $\gamma\delta$ T cells. Virtually, the addition of A2AR agonist CGS21680 promoted the expression of IL-1 β , IL-6, IL-17A and IFN- α , while A2AR antagonist SCH58261 inhibited the expression of the above-mentioned inflammatory factors ($P < 0.05$, Figure 4E). The above results suggest that A2AR has an important effect on the viability and function of $\gamma\delta$ T cells, especially on the secretion of inflammatory factors.



DOI: 10.3748/wjg.v29.i9.1475 Copyright ©The Author(s) 2023.

Figure 2 The intestinal ATP and adenosine 2A receptor expression in post-infectious irritable bowel syndrome mouse. A: The level of ATP in post-infectious irritable bowel syndrome (PI-IBS) mouse. The results were independently repeated three times; B and C: The intestinal levels of adenosine 2A receptor (A2AR) in PI-IBS mouse; D: The mRNA relative ratio of A2AR in PI-IBS mouse. The results were independently repeated three times; E and F: The intestinal levels of the inflammatory cytokines in PI-IBS mice were measured by ELISA and western blot, respectively. The ELISA results were obtained from six mice; G: The mRNA relative ratio of the intestinal cytokines in PI-IBS mouse. The samples were from mice mentioned in E and F. The results were independently repeated three times; H and I: The intestinal levels of tight junction proteins in PI-IBS mice were tested through western blot and quantified by image J software. β -Actin is used as the loading control for both western blot and reverse transcription polymerase chain reaction. ^a P < 0.05, ^b P < 0.01, ^c P < 0.001 vs the Control group; ^e P < 0.05, ^d P < 0.01, ^f P < 0.001 vs the PI-IBS group.

The regulation of A2AR on $\gamma\delta$ T cells relies on the PKA/CREB/NF- κ B signaling pathway

As ADO binds to A2AR, A2AR then interacts with Gs family proteins to increase intracellular cAMP levels and activate downstream PKA/CREB-related pathways[33], we next investigated the activation of signaling pathways in $\gamma\delta$ T cells by western blot. The change of PKA/p-PKA, CREB/p-CREB, NF- κ B/p-NF- κ B protein level, and quantitative results elucidated that compared to control $\gamma\delta$ T cells, treatment of $\gamma\delta$ T cells with the A2AR antagonist SCH58261 significantly decreased the expression of PKA/CREB/NF- κ B and reduced the phosphorylation levels of the above proteins; whereas the introduction of A2AR agonist CGS21680 further promoted the protein expression of PKA/CREB/NF- κ B as well as the phosphorylation activation level of the above proteins (Figure 5A-D). Therefore, given the above results, we can safely draw the conclusion that the PKA/CREB/NF- κ B pathway is the key downstream signaling pathway for $\gamma\delta$ T cells to regulate the relevant clinical manifestations *via* A2AR during PI-IBS disease progression.

A2AR knockdown inhibits the inflammatory response

To further clarify the effect of A2AR on the expression of inflammatory factors, we constructed A2AR-

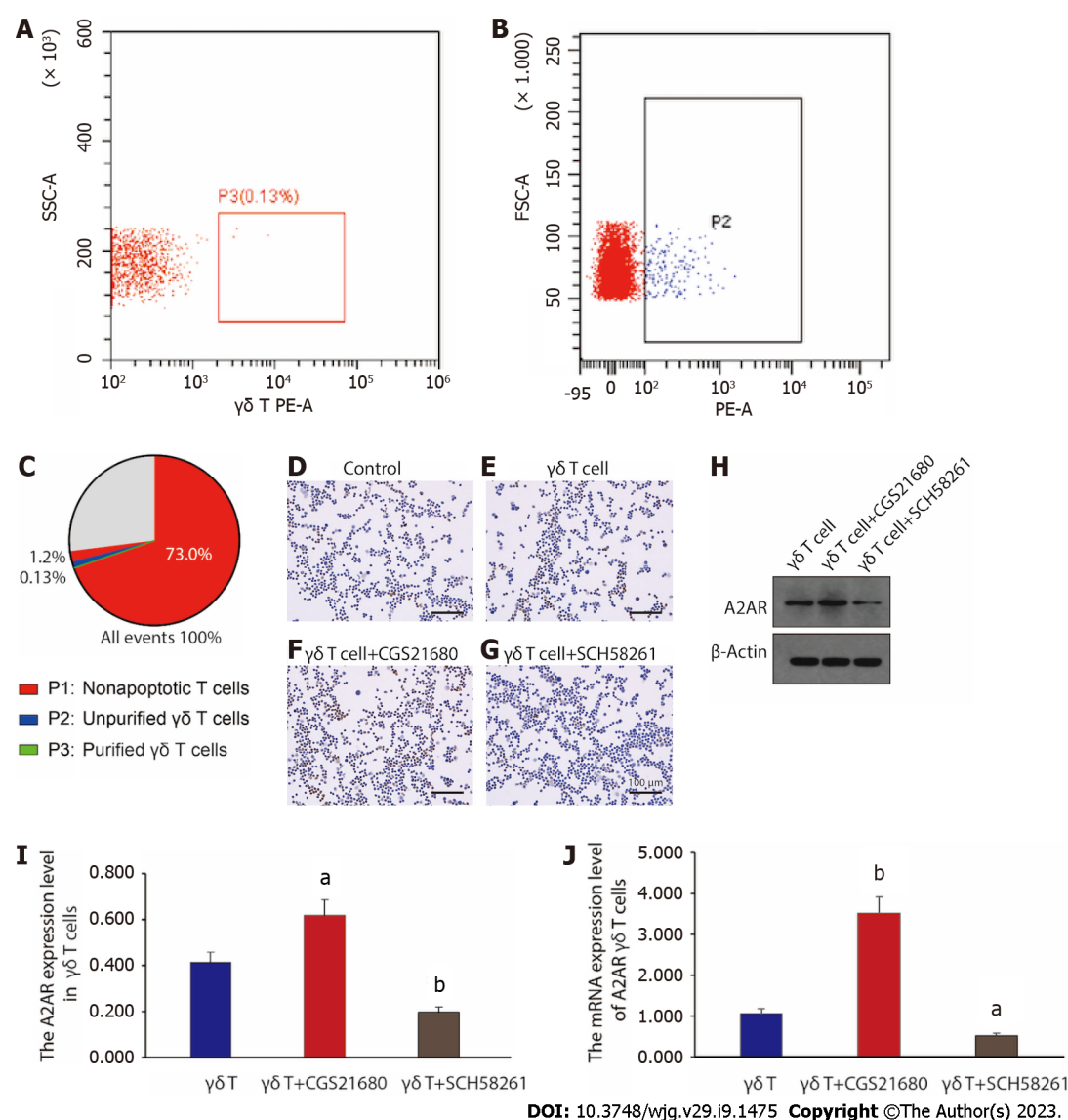


Figure 3 $\gamma\delta$ T cells' isolation and functional evaluation. A-C: Based on the results of fluorescence-activated cell sorting, $\gamma\delta$ T cells were effectively extracted and purified. P2, unpurified $\gamma\delta$ T cells; P3, purified $\gamma\delta$ T cells; D-G: Immunohistochemistry labeling of adenosine 2A receptor (A2AR) expression in $\gamma\delta$ T cells. Scale bars, 100 μ m; H: Western blot analysis of A2AR expression levels in $\gamma\delta$ T cells. β -Actin is used as the loading control; I: The quantitative result of A2AR expression level in $\gamma\delta$ T cells was analyzed from data shown in H. Results from three times of independently repeated experiments were analysed; J: Reverse transcription polymerase chain reaction analysis of the expression level of A2AR mRNA in $\gamma\delta$ T cells. The results were independently repeated three times. A2AR: Adenosine 2A receptor. ^a $P < 0.05$, ^b $P < 0.01$ vs the $\gamma\delta$ T cell group.

shRNA and inhibited the expression of A2AR by plasmid transfection. The results illustrated that A2AR expression was greatly boosted in the PI-IBS group compared with the control group; when transfected with shRNA, A2AR expression was significantly reduced in the IBS + shRNA group. Moreover, when IBS tissue cells were co-incubated with $\gamma\delta$ T cells, the A2AR expression level was further increased. Meanwhile, silencing A2AR downregulated A2AR expression in the IBS + shRNA + $\gamma\delta$ T cells group compared with the IBS + $\gamma\delta$ T cells group (Figure 6A). After clarifying the silencing efficiency, we examined the effect of silencing A2AR on the expression level of inflammatory factors. From the results in Figure 6B, we can clearly see that the inflammatory factor levels, which were originally higher in the PI-IBS model group, were dramatically reduced due to A2AR knockdown. At the same time, given that the reduced expression of TJ proteins leads to increased intestinal permeability, we also evaluated the altered expression levels of TJ proteins and found that the originally suppressed TJ protein expression in PI-IBS mice was significantly reversed after A2AR silencing (Figure 6C). Taken together, the above findings demonstrate that downregulation of A2AR can reduce $\gamma\delta$ T cell-induced inflammatory cytokine production and release.

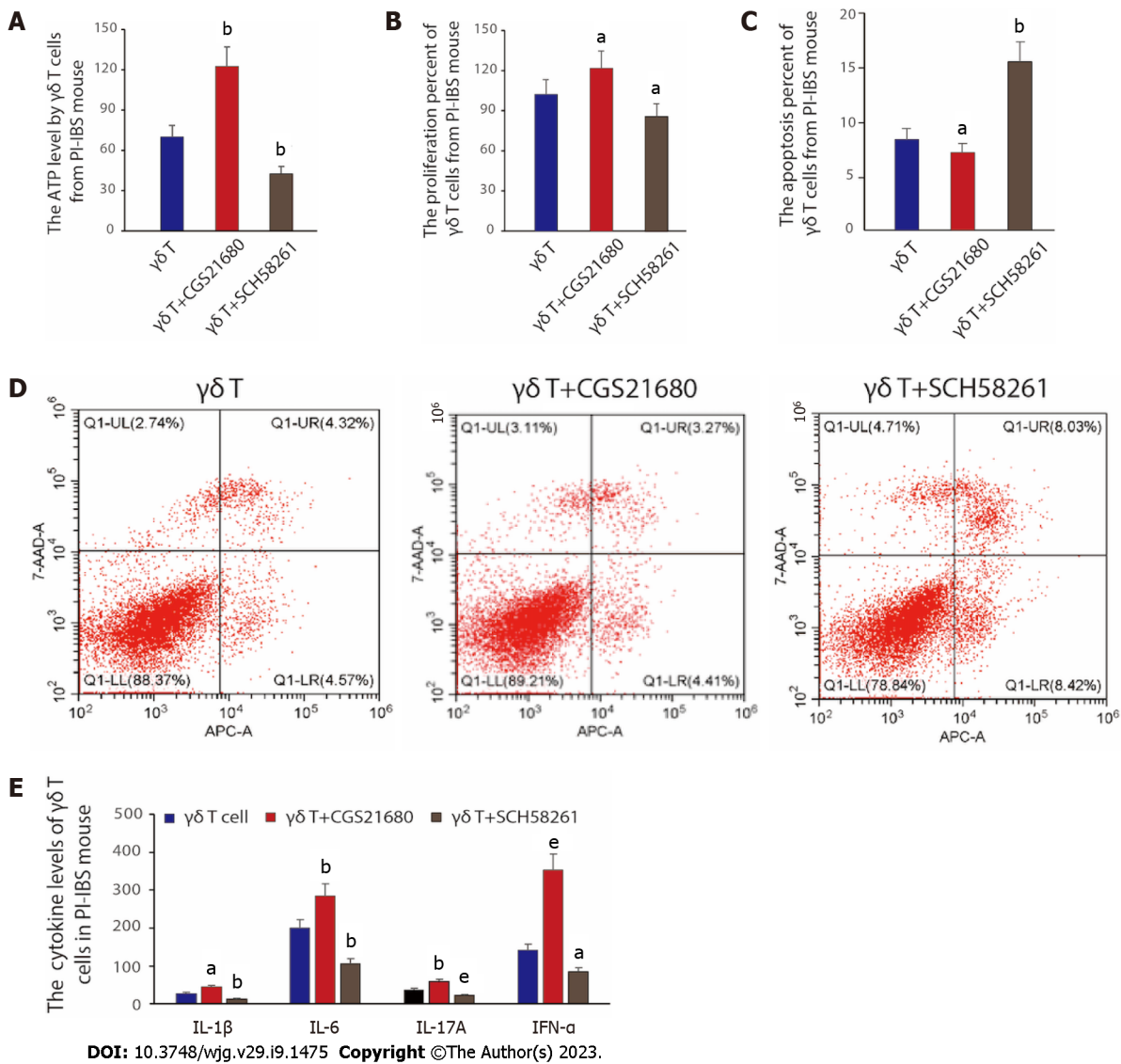


Figure 4 Functional evaluation of $\gamma\delta$ T cells *in vitro*. A: The ATP level changed by differently treated $\gamma\delta$ T cells from post-infectious irritable bowel syndrome (PI-IBS) mice. The data was obtained from six mice in each group; B: The proliferation percent of $\gamma\delta$ T cells from PI-IBS mouse was analysed through CCK8 assay. The samples were taken from six mice in each group; C: The apoptosis percent of $\gamma\delta$ T cells from PI-IBS mouse measured by fluorescence-activated cell sorting. The $\gamma\delta$ T cells were taken from six mice in each group; D: Apoptosis rates were detected according to Annexin V and PI double-staining method; E: The cytokines level of IL-1 β , IL-6, IL-17A and IFN- α from PI-IBS mice after reinfusing control $\gamma\delta$ T cells and $\gamma\delta$ T cells treated with CGS21680 or SCH58261, respectively. The data was obtained from six mice in each group. PI-IBS: Post-infectious irritable bowel syndrome. ^a $P < 0.05$, ^b $P < 0.01$, ^e $P < 0.001$ vs the $\gamma\delta$ T cell group.

DISCUSSION

Persistent intestinal low-degree inflammation occurs in IBS due to complex disorders in the immune system, especially in PI-IBS, leading to minor biochemical and pathological changes but continuous clinical symptoms in patients[34]. Nevertheless, the precise immune regulatory mechanism in PI-IBS remains unknown. We have previously reported that $\gamma\delta$ T cells could alleviate PI-IBS through promoting Th17 polarization *via* HSP70 receptor[12]. This study is a follow-up study on the pathogenesis of PI-IBS with the aim of finding new immunomodulatory proteins that directly regulate the intestinal microenvironment and interfere with PI-IBS disease progression.

Few literatures have been reported the relationship between adenosine receptor and PI-IBS. According to our research, an increase in intestinal ATP level is followed by the upregulation of intestinal A2AR in PI-IBS, suggesting that ATP and A2AR may be involved in the pathophysiology of PI-IBS. It is unclear if the quantitative alterations of intestinal A2AR originated from PI-IBS could lead to exacerbated PI-IBS. After being administered with the A2AR antagonist, the digestive tissue of the animals remained unchanged, but their clinical symptoms improved. This discovery contradicted earlier notions that A2AR antagonist exhibits a protective function in inflammation[35]. Moreover, an A2AR antagonist may activate an unidentified pathway to control the equilibrium, and an extended persistence of elevated adenosine levels can be deleterious, contributing to the formation of an immunosuppressed niche that is conducive to the initiation and development of neoplasia[36]. These

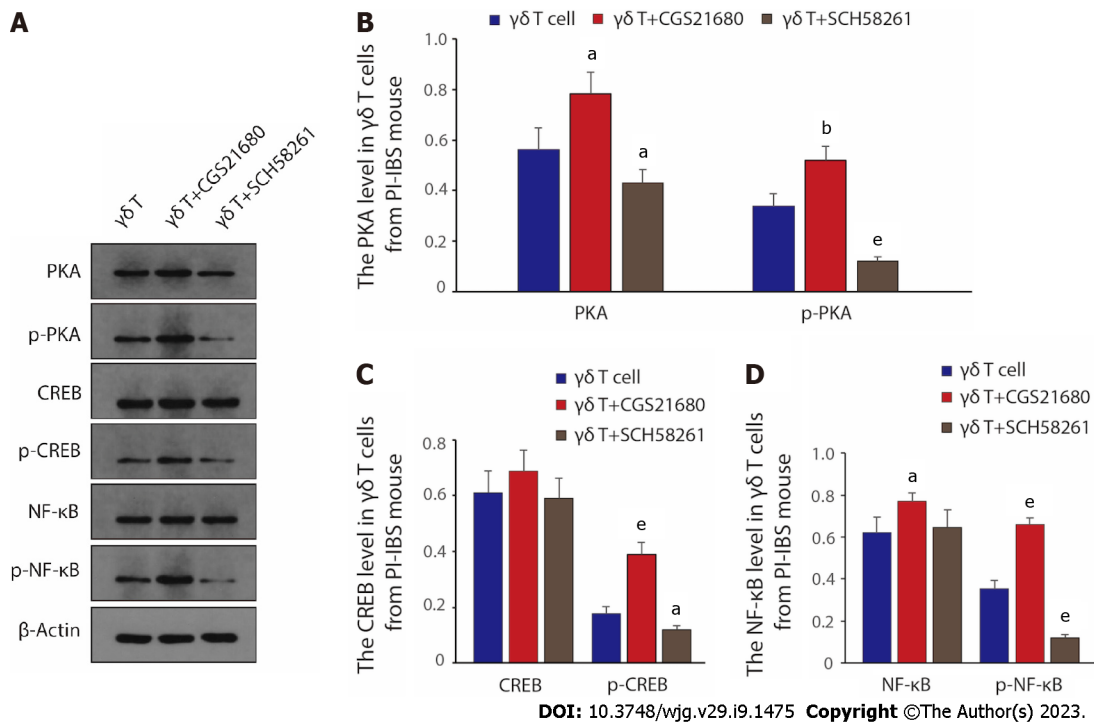


Figure 5 Adenosine 2A receptor mediated signaling pathway that could regulate the function of $\gamma\delta$ T cells. A: The PKA/p-PKA, CREB/p-CREB, NF- κ B/p-NF- κ B protein levels in $\gamma\delta$ T cells of post-infectious irritable bowel syndrome (PI-IBS) mice. β -Actin is used as the loading control; B: The relative PKA level in $\gamma\delta$ T cells from mice with PI-IBS; C: The relative CREB level in $\gamma\delta$ T cells from PI-IBS mice; D: The relative NF- κ B level in $\gamma\delta$ T cells from mice with PI-IBS. The results from three times of independently repeated experiments were gathered and analyzed. PI-IBS: Post-infectious irritable bowel syndrome. ^a $P < 0.05$, ^b $P < 0.01$, ^e $P < 0.001$ vs the $\gamma\delta$ T cell group.

findings also indicate the complexity of PI-IBS.

IL-6, IL-17A, and IFN- α are important pro-inflammatory factors. IL-17A can increase the permeability of cells by binding to specific receptors and can stimulate various types of cells to produce chemokines, IFN- α , and IL-1 β to stimulate inflammatory reactions. IFN- α can interrupt the function of intestinal epithelial cells, leading to intestinal epithelial barrier dysfunction[37]. IL-6 is mainly manifested in maintaining regulatory T cells and effector T cells and inhibiting the apoptosis of CD4⁺ T cells in the inflammatory response[38]. Our study suggested that the levels of pro-inflammatory factors IL-6, IL-17A, and IFN- α were significantly elevated in PI-IBS mice. This indicated that there was a low-grade inflammatory response in the intestinal mucosa, resulting in a defect in the epithelial barrier. The epithelial barrier dysfunction can lead to an increase in intestinal permeability, which further promotes the increase and activation of immune cells[39]. TJ proteins such as ZO-1, Claudin-1, and Occludin form a tight junction structure between adjacent intestinal epithelial cells as the structural basis of the mechanical intestinal barrier, thereby defending against external damaging factors and maintaining intestinal mucosal homeostasis[40,41]. Under the stimulation of severe infection and surgical blows, the tight junction structure between the intestinal epithelium can be destructed, The damaged mechanical barrier and the translocation of intestinal flora into the blood then cause bacteremia and sepsis to stimulate the release of systemic inflammatory factors, leading to systemic inflammatory response syndrome and multiple organ dysfunction[42]. In this study, the expression of ZO-1, Claudin-1, and Occludin was reduced substantially, suggesting that PI-IBS mice had impaired intestinal epithelial barrier function, and were susceptible to stimulation by various etiologies to activate the intestinal epithelial immune system and lead to intestinal inflammatory responses.

The uneven distribution of $\gamma\delta$ T cells in normal and inflammatory tissues plays an important role in autoimmunity[43]. In some patients with autoimmune diseases, the proportion of $\gamma\delta$ T cells in infiltrating T cells is abnormally increased. $\gamma\delta$ T cells are the main source of proinflammatory cytokines IL-17, IL-23, IFN- α , and TGF- β . These inflammatory molecules are responsible for creating an inflammatory environment that enhances disease progression through different pathways[44]. The relationship between different disease phenotypes and $\gamma\delta$ T cells can be clearly discerned. $\gamma\delta$ T cells acquire the ability to produce IL-17 during embryonic thymus development, and T cells expressing $\gamma\delta$ T cell receptors are an important innate source of the pro-inflammatory cytokine IL-17. The potent inflammatory effects of IL-17 are mainly related to its ability to recruit immune cells and synergistic effects with other pro-inflammatory cytokines[45]. Hence, it is no exaggeration to say that $\gamma\delta$ T cells play a crucial role in regulating inflammation and the immune response. In our results, we firstly found that the number of $\gamma\delta$ T cells markedly increased, accompanied by the increased A2AR expressed on their

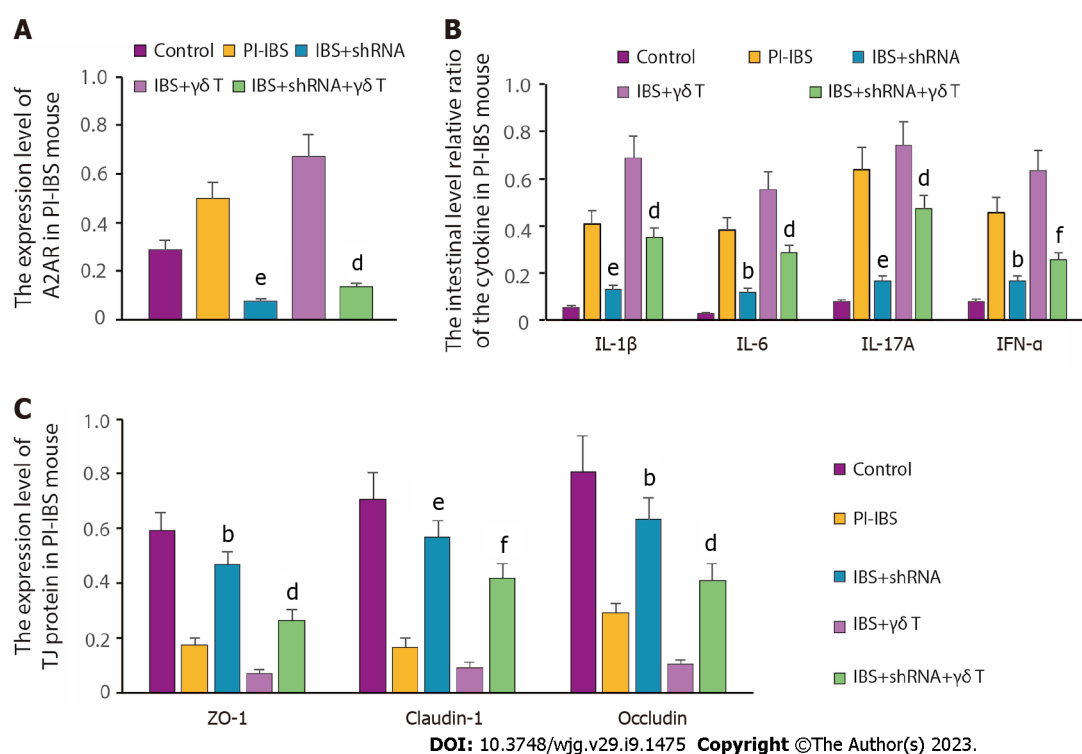


Figure 6 The inflammatory response alteration after adenosine 2A receptor knockdown. A: The altered level of adenosine 2A receptor (A2AR) expression after A2AR-shRNA transfection or γδ T cell reinfusion in post-infectious irritable bowel syndrome (PI-IBS) mice was assessed. The results were obtained from three times of independently repeated experiments; B: The relative ratio of the intestinal cytokine level in PI-IBS mice ($n = 6$, per group); C: The degree of TJ (tight junction protein) protein expression in PI-IBS mice ($n = 6$, per group). ^a $P < 0.05$, ^b $P < 0.01$, ^c $P < 0.001$ vs the PI-IBS group; ^d $P < 0.05$, ^e $P < 0.01$, ^f $P < 0.001$ vs the IBS + γδ T group.

surfaces. Secondly, the agonist of A2AR boosted the quantity of γδ T cells together with upregulated A2AR expression. Thirdly, the A2AR antagonist reduced γδ T cells' number and impaired their function. These findings demonstrated that γδ T cells participated in intestinal inflammation mediated by A2AR.

At present, the anti-inflammatory mechanism of A2AR mainly includes: (1) Inhibition of neutrophils and release of peroxidase[46,47]; (2) promotion of the production of IL-10 by monocytes and macrophages; (3) inhibition of the release of IL-12 and TNF-α[48]; and (4) phosphorylation of cAMP response element-binding (CREB) protein by activating the cAMP-PKA pathway, in which phosphorylated CREB competes with the p65 subunit of NF-κB and the NF-κB coactivator CREB-binding protein combined to inhibit the transcriptional regulation of NF-κB on target genes, thereby blocking the production of inflammatory mediators[49,50]. Excessive release of inflammatory mediators is the main mechanism that causes uncontrolled inflammatory responses in the body. Therefore, the A2AR-cAMP-PKA-CREB-NF-κB signaling pathway is the main mechanism and classical pathway for A2AR mediated function of γδ T cells to inhibit inflammation. Furthermore, we revealed that the A2AR agonist CGS21680 could increase both protein and mRNA expression levels of PKA, CREB and NF-κB, and their phosphorylation activation levels were elevated as well in γδ T cells from PI-IBS mice. Apart from that, we also observed the opposite effects after the treatment of A2AR antagonist SCH58261 in γδ T cells compared with results in A2AR agonist CGS21680 treatment group. Thus, we illustrated that the A2AR-PKA-CREB-NF-κB pathway is the crucial intracellular signaling pathway for A2AR-induced γδ T cells' role in PI-IBS. However, whether there are other signaling pathways at play still needs to be studied.

Furthermore, we decreased the A2AR expression with LV-A2AR-shRNA, which alleviated the symptoms of PI-IBS in model mice. Meanwhile, we then reinfused the γδ T cell to PI-IBS mice, the disease became severer. Interestingly, when the PI-IBS mice reinfused with sh-A2AR γδ T cells, the severity of their clinical symptoms was lessened. Besides, we also observed the alterations in the cytokines and TJ protein expression, and the results were in accordance with the changes in the clinical symptoms. These data suggested that γδ T cells participated in PI-IBS *via* the A2AR mediated signaling pathway.

Our study included a few drawbacks as well. The type of visceral hypersensitivity was not investigated in PI-IBS mice, and the water content from the feces of mice was not examined. Due to the difficulties of isolating T cells directly from the gut, we utilized spleen-isolated T cells, likely resulting in a greater degree of variety than their intestinal counterparts.

CONCLUSION

In the present study, we found higher expression of A2AR in PI-IBS mice than normal mice, which initially suggested the relevance of A2AR to PI-IBS disease development. Further mechanistic studies demonstrated that A2AR, which located on the surface of $\gamma\delta$ T cells, could regulate the function of $\gamma\delta$ T cells. Notably, A2AR regulated T cell viability and increased the secretion of inflammatory factors, mainly through the PKA/CREB/NF- κ B signaling pathway, which followed by the progression of PI-IBS. Fortunately, the application of A2AR antagonists could markedly reduce the inflammatory response and improve PI-IBS symptoms by regulating the function of $\gamma\delta$ T cells.

In summary, through our study, we identified A2AR, a key protein that promotes disease progression in PI-IBS, and demonstrated the feasibility of antagonizing A2AR to intervene in PI-IBS, thus providing a new therapeutic target for PI-IBS treatment.

ARTICLE HIGHLIGHTS

Research background

Persistent low level of inflammation due to immune dysfunction is regarded as one of the prime pathogenic mechanisms of post-infectious irritable bowel syndrome (PI-IBS). $\gamma\delta$ T cells play a key role in innate and adaptive immunity. Adenosine and its receptors expressed on $\gamma\delta$ T cells are involved in intestinal inflammation and immune regulation.

Research motivation

To unveil the role of $\gamma\delta$ T cells regulated by adenosine 2A receptor (A2AR) in the pathogenesis of PI-IBS.

Research objectives

This study aims to investigate the role of A2AR in $\gamma\delta$ T cells and $\gamma\delta$ T cells in PI-IBS.

Research methods

A PI-IBS mouse model was established with *Trichinella spiralis* (*T. spiralis*) infection. Intestinal A2AR and A2AR in $\gamma\delta$ T cells were detected through immunohistochemistry, and inflammatory cytokines were detected through western blot. The role of A2AR on isolated $\gamma\delta$ T cells, including $\gamma\delta$ T cell proliferation, apoptosis and $\gamma\delta$ T cell-mediated cytokine secretion, was assessed *in vitro*. A2AR expression in $\gamma\delta$ T cells was determined by western blot and reverse transcription polymerase chain reaction (RT-PCR). Mice were injected with A2AR agonist or A2AR antagonist and cultured $\gamma\delta$ T cells were also reinfused into the animals, and then the above parameters and clinical features were examined again. In addition, alterations in A2AR-related signaling pathway molecules were detected by western blot and RT-PCR.

Research results

The expression levels of ATP and A2AR were increased in PI-IBS mice ($P < 0.01$), and inhibition of A2AR further enhanced the clinical features of PI-IBS, as reflected by the abdominal withdrawal reflex and colonic transport test results. The development of PI-IBS was associated with an increase in intestinal $\gamma\delta$ T cells and cytokines including interleukin-1 (IL-1), IL-6, IL-17A and interferon- α (IFN- α). In addition, $\gamma\delta$ T cells obtained by purification *in vitro* could express A2AR and promote IL-1, IL-6, IL-17A and IFN- α secretion, which is also regulated by A2AR agonists and antagonists. We also found that A2AR antagonists improved $\gamma\delta$ T cell function through the PKA/CREB/NF- κ B signaling pathway.

Research conclusions

Our results suggested that A2AR contributes to the development of PI-IBS after *T. spiralis* infection via the PKA/CREB/NF- κ B signaling pathway by $\gamma\delta$ T cells.

Research perspectives

Hypo-inflammation caused by immune dysfunction is considered to be one of the main pathogenic mechanisms of PI-IBS. In this study, we discovered that A2AR on the surface of $\gamma\delta$ T cells can regulate the function of $\gamma\delta$ T cell, thereby increasing inflammatory factor secretion and promoting PI-IBS progression. Luckily, the utilization of A2AR antagonists can improve PI-IBS symptoms by promoting $\gamma\delta$ T cells' function. Through our study, we identified A2AR, a key protein that promotes PI-IBS disease progression, and demonstrated the feasibility of antagonizing A2AR to intervene in PI-IBS, thus providing a novel therapeutic target and an effective intervention strategy for PI-IBS treatment.

FOOTNOTES

Author contributions: Dong LW, Chen YY, and Chen CC contributed equally to this manuscript and should be as the co-first authors. Lan C, Sun DM, Dong LW, Chen YY, and Chen CC contributed to the conception and design; Lan C, Dong LW, Chen YY, and Chen CC contributed to development of methodology; Dong LW, Chen YY, Chen CC, Ma ZC, Fu J, Huang BL, and Liu FJ contributed to acquisition of data (provided animals, acquired and managed patients, provided facilities, *etc.*), analysis and interpretation of data (*e.g.*, statistical analysis, biostatistics, computational analysis); Dong LW, Liang DC, and Sun DM contributed to writing, review, and/or revision of the manuscript; Chen YY, Chen CC, and Liang DC contributed to the administrative, technical, or material support (*i.e.*, reporting or organizing data, constructing databases); Lan C supervised the study; all authors have read and approved the final version of the manuscript.

Supported by National Natural Science Foundation of China, No. 81160057, No. 81860102, and No. 82060102; Natural Science Foundation of Hainan Province, High-level Personnel Program, No. 821RC1116; Research Project of Health Industry in Hainan Province, No. 20A200066; and Hainan Provincial Clinical Medical Center.

Institutional animal care and use committee statement: The experimental protocol was approved by the Animal Care and Use Committee of Hainan General Hospital.

Conflict-of-interest statement: All the authors report no relevant conflicts of interest for this article.

Data sharing statement: No additional data are available.

ARRIVE guidelines statement: The authors have read the ARRIVE guidelines, and the manuscript was prepared and revised according to the ARRIVE guidelines.

Open-Access: This article is an open-access article that was selected by an in-house editor and fully peer-reviewed by external reviewers. It is distributed in accordance with the Creative Commons Attribution NonCommercial (CC BY-NC 4.0) license, which permits others to distribute, remix, adapt, build upon this work non-commercially, and license their derivative works on different terms, provided the original work is properly cited and the use is non-commercial. See: <https://creativecommons.org/licenses/by-nc/4.0/>

Country/Territory of origin: China

ORCID number: Cheng Lan 0000-0002-1435-5510.

S-Editor: Gong ZM

L-Editor: A

P-Editor: Yuan YY

REFERENCES

- 1 Camilleri M. Diagnosis and Treatment of Irritable Bowel Syndrome: A Review. *JAMA* 2021; **325**: 865-877 [PMID: 33651094 DOI: 10.1001/jama.2020.22532]
- 2 Berumen A, Edwinston AL, Grover M. Post-infection Irritable Bowel Syndrome. *Gastroenterol Clin North Am* 2021; **50**: 445-461 [PMID: 34024451 DOI: 10.1016/j.gtc.2021.02.007]
- 3 Bonetto S, Fagoonee S, Battaglia E, Grassini M, Saracco GM, Pellicano R. Recent advances in the treatment of irritable bowel syndrome. *Pol Arch Intern Med* 2021; **131**: 709-715 [PMID: 34463082 DOI: 10.20452/pamw.16067]
- 4 Ng QX, Soh AYS, Loke W, Lim DY, Yeo WS. The role of inflammation in irritable bowel syndrome (IBS). *J Inflamm Res* 2018; **11**: 345-349 [PMID: 30288077 DOI: 10.2147/JIR.S174982]
- 5 Aguilera-Lizarraga J, Hussein H, Boeckxstaens GE. Immune activation in irritable bowel syndrome: what is the evidence? *Nat Rev Immunol* 2022; **22**: 674-686 [PMID: 35296814 DOI: 10.1038/s41577-022-00700-9]
- 6 Zeng L, Li K, Wei H, Hu J, Jiao L, Yu S, Xiong Y. A Novel EphA2 Inhibitor Exerts Beneficial Effects in PI-IBS in Vivo and in Vitro Models via Nrf2 and NF- κ B Signaling Pathways. *Front Pharmacol* 2018; **9**: 272 [PMID: 29662452 DOI: 10.3389/fphar.2018.00272]
- 7 Zhang Y, Wu X, Wu J, Li S, Han S, Lin Z, Ding S, Jia X, Gong W. Decreased expression of microRNA-510 in intestinal tissue contributes to post-infectious irritable bowel syndrome via targeting PRDX1. *Am J Transl Res* 2019; **11**: 7385-7397 [PMID: 31934286]
- 8 Kobayashi H, Tanaka Y. $\gamma\delta$ T Cell Immunotherapy-A Review. *Pharmaceuticals (Basel)* 2015; **8**: 40-61 [PMID: 25686210 DOI: 10.3390/ph8010040]
- 9 Ribot JC, Lopes N, Silva-Santos B. $\gamma\delta$ T cells in tissue physiology and surveillance. *Nat Rev Immunol* 2021; **21**: 221-232 [PMID: 33057185 DOI: 10.1038/s41577-020-00452-4]
- 10 Ramstead AG, Jutila MA. Complex role of $\gamma\delta$ T-cell-derived cytokines and growth factors in cancer. *J Interferon Cytokine Res* 2012; **32**: 563-569 [PMID: 23078623 DOI: 10.1089/jir.2012.0073]
- 11 Su D, Shen M, Li X, Sun L. Roles of $\gamma\delta$ T cells in the pathogenesis of autoimmune diseases. *Clin Dev Immunol* 2013; **2013**: 985753 [PMID: 23533458 DOI: 10.1155/2013/985753]
- 12 He Z, Sun X, Ma Z, Fu J, Huang B, Liu F, Chen Y, Deng T, Han X, Sun D, Lan C. Heat shock protein 70 protects mouse

- against post-infection irritable bowel syndrome *via* up-regulating intestinal $\gamma\delta$ T cell's Th17 response. *Cell Biosci* 2018; **8**: 38 [PMID: 29928498 DOI: 10.1186/s13578-018-0237-z]
- 13 **Layland J**, Carrick D, Lee M, Oldroyd K, Berry C. Adenosine: physiology, pharmacology, and clinical applications. *JACC Cardiovasc Interv* 2014; **7**: 581-591 [PMID: 24835328 DOI: 10.1016/j.jcin.2014.02.009]
 - 14 **Borea PA**, Gessi S, Merighi S, Vincenzi F, Varani K. Pharmacology of Adenosine Receptors: The State of the Art. *Physiol Rev* 2018; **98**: 1591-1625 [PMID: 29848236 DOI: 10.1152/physrev.00049.2017]
 - 15 **Pelleg A**, Porter RS. The pharmacology of adenosine. *Pharmacotherapy* 1990; **10**: 157-174 [PMID: 2196534]
 - 16 **Kumar V**, Sharma A. Adenosine: an endogenous modulator of innate immune system with therapeutic potential. *Eur J Pharmacol* 2009; **616**: 7-15 [PMID: 19464286 DOI: 10.1016/j.ejphar.2009.05.005]
 - 17 **Antonioli L**, Fornai M, Colucci R, Ghisu N, Tuccori M, Del Tacca M, Blandizzi C. Regulation of enteric functions by adenosine: pathophysiological and pharmacological implications. *Pharmacol Ther* 2008; **120**: 233-253 [PMID: 18848843 DOI: 10.1016/j.pharmthera.2008.08.010]
 - 18 **Belikoff B**, Hatfield S, Sitkovsky M, Remick DG. Adenosine negative feedback on A2A adenosine receptors mediates hyporesponsiveness in chronically septic mice. *Shock* 2011; **35**: 382-387 [PMID: 21192284 DOI: 10.1097/SHK.0b013e3182085f12]
 - 19 **Hou T**, Xiang H, Yu L, Su W, Shu Y, Li H, Zhu H, Lin L, Hu X, Liang S, Zhang H, Li M. Electroacupuncture inhibits visceral pain *via* adenosine receptors in mice with inflammatory bowel disease. *Purinergic Signal* 2019; **15**: 193-204 [PMID: 31187350 DOI: 10.1007/s11302-019-09655-4]
 - 20 **Sun L**, Li X, Guan H, Chen S, Fan X, Zhou C, Yang H, Xiao W. A Novel Role of A(2A)R in the Maintenance of Intestinal Barrier Function of Enteric Glia from Hypoxia-Induced Injury by Combining with mGluR5. *Front Pharmacol* 2021; **12**: 633403 [PMID: 34093180 DOI: 10.3389/fphar.2021.633403]
 - 21 **Long SR**, Wang ZQ, Liu RD, Liu LN, Li LG, Jiang P, Zhang X, Zhang ZF, Shi HN, Cui J. Molecular identification of Trichinella spiralis nudix hydrolase and its induced protective immunity against trichinellosis in BALB/c mice. *Parasit Vectors* 2014; **7**: 600 [PMID: 25522912 DOI: 10.1186/s13071-014-0600-9]
 - 22 **Yang B**, Zhou X, Lan C. Changes of cytokine levels in a mouse model of post-infectious irritable bowel syndrome. *BMC Gastroenterol* 2015; **15**: 43 [PMID: 25886744 DOI: 10.1186/s12876-015-0272-8]
 - 23 **Suzuki R**, Kohno H, Sugie S, Tanaka T. Dose-dependent promoting effect of dextran sodium sulfate on mouse colon carcinogenesis initiated with azoxymethane. *Histol Histopathol* 2005; **20**: 483-492 [PMID: 15736053 DOI: 10.14670/HH-20.483]
 - 24 **Lan C**, Sun XN, Zhou XC, Yang B, Huang BL, Deng TZ, He ZT, Han XY. Preinduced intestinal HSP70 improves visceral hypersensitivity and abnormal intestinal motility in PI-IBS mouse model. *Asian Pac J Trop Med* 2016; **9**: 302-305 [PMID: 26972407 DOI: 10.1016/j.apjtm.2016.01.022]
 - 25 **Vork L**, Wilms E, Penders J, Jonkers DMAE. Stool Consistency: Looking Beyond the Bristol Stool Form Scale. *J Neurogastroenterol Motil* 2019; **25**: 625 [PMID: 31587553 DOI: 10.5056/jnm19086]
 - 26 **Wu Z**, Yang L, Shi L, Song H, Shi P, Yang T, Fan R, Jiang T, Song J. Prognostic Impact of Adenosine Receptor 2 (A2AR) and Programmed Cell Death Ligand 1 (PD-L1) Expression in Colorectal Cancer. *Biomed Res Int* 2019; **2019**: 8014627 [PMID: 31275983 DOI: 10.1155/2019/8014627]
 - 27 **Sauer KA**, Scholtes P, Karwot R, Finotto S. Isolation of CD4+ T cells from murine lungs: a method to analyze ongoing immune responses in the lung. *Nat Protoc* 2006; **1**: 2870-2875 [PMID: 17406546 DOI: 10.1038/nprot.2006.435]
 - 28 **Williams L**, Dery KJ, Lee WH, Li H, Shively JE, Kujawski M. Isolation and expansion of murine $\gamma\delta$ T cells from mouse splenocytes. *J Immunol Methods* 2022; **508**: 113322 [PMID: 35843266 DOI: 10.1016/j.jim.2022.113322]
 - 29 **Turner JR**. Intestinal mucosal barrier function in health and disease. *Nat Rev Immunol* 2009; **9**: 799-809 [PMID: 19855405 DOI: 10.1038/nri2653]
 - 30 **Li B**, Lee C, Chuslip S, Lee D, Biouss G, Wu R, Koike Y, Miyake H, Ip W, Gonska T, Pierro A. Intestinal epithelial tight junctions and permeability can be rescued through the regulation of endoplasmic reticulum stress by amniotic fluid stem cells during necrotizing enterocolitis. *FASEB J* 2021; **35**: e21265 [PMID: 33373067 DOI: 10.1096/fj.202001426R]
 - 31 **Suzuki T**. Regulation of intestinal epithelial permeability by tight junctions. *Cell Mol Life Sci* 2013; **70**: 631-659 [PMID: 22782113 DOI: 10.1007/s00018-012-1070-x]
 - 32 **Mangan BA**, Dunne MR, O'Reilly VP, Dunne PJ, Exley MA, O'Shea D, Scotet E, Hogan AE, Doherty DG. Cutting edge: CD1d restriction and Th1/Th2/Th17 cytokine secretion by human V δ 3 T cells. *J Immunol* 2013; **191**: 30-34 [PMID: 23740951 DOI: 10.4049/jimmunol.1300121]
 - 33 **Mastelic-Gavillet B**, Navarro Rodrigo B, Décobaz L, Wang H, Ercolano G, Ahmed R, Lozano LE, Ianaro A, Derré L, Valerio M, Tawadros T, Jichlinski P, Nguyen-Ngoc T, Speiser DE, Verdel G, Gestermann N, Dormond O, Kandalaft L, Coukos G, Jandus C, Ménétrier-Caux C, Caux C, Ho PC, Romero P, Harari A, Vigano S. Adenosine mediates functional and metabolic suppression of peripheral and tumor-infiltrating CD8(+) T cells. *J Immunother Cancer* 2019; **7**: 257 [PMID: 31601268 DOI: 10.1186/s40425-019-0719-5]
 - 34 **El-Salhy M**, Gundersen D, Hatlebakk JG, Hausken T. Low-grade inflammation in the rectum of patients with sporadic irritable bowel syndrome. *Mol Med Rep* 2013; **7**: 1081-1085 [PMID: 23417076 DOI: 10.3892/mmr.2013.1320]
 - 35 **Leone RD**, Lo YC, Powell JD. A2AR antagonists: Next generation checkpoint blockade for cancer immunotherapy. *Comput Struct Biotechnol J* 2015; **13**: 265-272 [PMID: 25941561 DOI: 10.1016/j.csbj.2015.03.008]
 - 36 **D'Antongiovanni V**, Fornai M, Pellegrini C, Benvenuti L, Blandizzi C, Antonioli L. The Adenosine System at the Crossroads of Intestinal Inflammation and Neoplasia. *Int J Mol Sci* 2020; **21** [PMID: 32708507 DOI: 10.3390/ijms21145089]
 - 37 **Yang S**, Yu M, Sun L, Xiao W, Yang X, Zhang C, Ma Y, Yang H, Liu Y, Lu D, Teitelbaum DH. Interferon- γ -induced intestinal epithelial barrier dysfunction by NF- κ B/HIF-1 α pathway. *J Interferon Cytokine Res* 2014; **34**: 195-203 [PMID: 24237301 DOI: 10.1089/jir.2013.0044]
 - 38 **Hovhannisyan Z**, Treatman J, Littman DR, Mayer L. Characterization of interleukin-17-producing regulatory T cells in inflamed intestinal mucosa from patients with inflammatory bowel diseases. *Gastroenterology* 2011; **140**: 957-965 [PMID: 21192284 DOI: 10.1097/SHK.0b013e3182085f12]

- 21147109 DOI: [10.1053/j.gastro.2010.12.002](https://doi.org/10.1053/j.gastro.2010.12.002)]
- 39 **González-Castro AM**, Martínez C, Salvo-Romero E, Fortea M, Pardo-Camacho C, Pérez-Berezo T, Alonso-Cotoner C, Santos J, Vicario M. Mucosal pathobiology and molecular signature of epithelial barrier dysfunction in the small intestine in irritable bowel syndrome. *J Gastroenterol Hepatol* 2017; **32**: 53-63 [PMID: [27087165](https://pubmed.ncbi.nlm.nih.gov/27087165/) DOI: [10.1111/jgh.13417](https://doi.org/10.1111/jgh.13417)]
 - 40 **Xiao W**, Wang W, Chen W, Sun L, Li X, Zhang C, Yang H. GDNF is involved in the barrier-inducing effect of enteric glial cells on intestinal epithelial cells under acute ischemia reperfusion stimulation. *Mol Neurobiol* 2014; **50**: 274-289 [PMID: [24878766](https://pubmed.ncbi.nlm.nih.gov/24878766/) DOI: [10.1007/s12035-014-8730-9](https://doi.org/10.1007/s12035-014-8730-9)]
 - 41 **Xiao W**, Feng Y, Holst JJ, Hartmann B, Yang H, Teitelbaum DH. Glutamate prevents intestinal atrophy *via* luminal nutrient sensing in a mouse model of total parenteral nutrition. *FASEB J* 2014; **28**: 2073-2087 [PMID: [24497581](https://pubmed.ncbi.nlm.nih.gov/24497581/) DOI: [10.1096/fj.13-238311](https://doi.org/10.1096/fj.13-238311)]
 - 42 **Lu YZ**, Wu CC, Huang YC, Huang CY, Yang CY, Lee TC, Chen CF, Yu LC. Neutrophil priming by hypoxic preconditioning protects against epithelial barrier damage and enteric bacterial translocation in intestinal ischemia/reperfusion. *Lab Invest* 2012; **92**: 783-796 [PMID: [22370946](https://pubmed.ncbi.nlm.nih.gov/22370946/) DOI: [10.1038/labinvest.2012.11](https://doi.org/10.1038/labinvest.2012.11)]
 - 43 **Paul S**, Shilpi, Lal G. Role of gamma-delta ($\gamma\delta$) T cells in autoimmunity. *J Leukoc Biol* 2015; **97**: 259-271 [PMID: [25502468](https://pubmed.ncbi.nlm.nih.gov/25502468/) DOI: [10.1189/jlb.3RU0914-443R](https://doi.org/10.1189/jlb.3RU0914-443R)]
 - 44 **Huang Y**, Getahun A, Heiser RA, Detanico TO, Aviszus K, Kirchenbaum GA, Casper TL, Huang C, Aydinoglu MK, Carding SR, Ikuta K, Huang H, Wysocki LJ, Cambier JC, O'Brien RL, Born WK. $\gamma\delta$ T Cells Shape Preimmune Peripheral B Cell Populations. *J Immunol* 2016; **196**: 217-231 [PMID: [26582947](https://pubmed.ncbi.nlm.nih.gov/26582947/) DOI: [10.4049/jimmunol.1501064](https://doi.org/10.4049/jimmunol.1501064)]
 - 45 **Bao K**, Reinhardt RL. The differential expression of IL-4 and IL-13 and its impact on type-2 immunity. *Cytokine* 2015; **75**: 25-37 [PMID: [26073683](https://pubmed.ncbi.nlm.nih.gov/26073683/) DOI: [10.1016/j.cyto.2015.05.008](https://doi.org/10.1016/j.cyto.2015.05.008)]
 - 46 **Gonzales JN**, Gorshkov B, Varn MN, Zemskova MA, Zemskov EA, Sridhar S, Lucas R, Verin AD. Protective effect of adenosine receptors against lipopolysaccharide-induced acute lung injury. *Am J Physiol Lung Cell Mol Physiol* 2014; **306**: L497-L507 [PMID: [24414256](https://pubmed.ncbi.nlm.nih.gov/24414256/) DOI: [10.1152/ajplung.00086.2013](https://doi.org/10.1152/ajplung.00086.2013)]
 - 47 **Koizumi S**, Odashima M, Otaka M, Jin M, Linden J, Watanabe S, Ohnishi H. Attenuation of gastric mucosal inflammation induced by indomethacin through activation of the A2A adenosine receptor in rats. *J Gastroenterol* 2009; **44**: 419-425 [PMID: [19333545](https://pubmed.ncbi.nlm.nih.gov/19333545/) DOI: [10.1007/s00535-009-0028-8](https://doi.org/10.1007/s00535-009-0028-8)]
 - 48 **Nowak M**, Lynch L, Yue S, Ohta A, Sitkovsky M, Balk SP, Exley MA. The A2aR adenosine receptor controls cytokine production in iNKT cells. *Eur J Immunol* 2010; **40**: 682-687 [PMID: [20039304](https://pubmed.ncbi.nlm.nih.gov/20039304/) DOI: [10.1002/eji.200939897](https://doi.org/10.1002/eji.200939897)]
 - 49 **Milne GR**, Palmer TM. Anti-inflammatory and immunosuppressive effects of the A2A adenosine receptor. *ScientificWorldJournal* 2011; **11**: 320-339 [PMID: [21298223](https://pubmed.ncbi.nlm.nih.gov/21298223/) DOI: [10.1100/tsw.2011.22](https://doi.org/10.1100/tsw.2011.22)]
 - 50 **Lin G**, Field JJ, Yu JC, Ken R, Neuberger D, Nathan DG, Linden J. NF- κ B is activated in CD4+ iNKT cells by sickle cell disease and mediates rapid induction of adenosine A2A receptors. *PLoS One* 2013; **8**: e74664 [PMID: [24124453](https://pubmed.ncbi.nlm.nih.gov/24124453/) DOI: [10.1371/journal.pone.0074664](https://doi.org/10.1371/journal.pone.0074664)]



Published by **Baishideng Publishing Group Inc**
7041 Koll Center Parkway, Suite 160, Pleasanton, CA 94566, USA

Telephone: +1-925-3991568

E-mail: bpgoffice@wjgnet.com

Help Desk: <https://www.f6publishing.com/helpdesk>

<https://www.wjgnet.com>

