

World Journal of *Gastroenterology*

World J Gastroenterol 2023 April 14; 29(14): 2064-2221



REVIEW

- 2064** Insight into the liver dysfunction in COVID-19 patients: Molecular mechanisms and possible therapeutic strategies
Khullar N, Bhatti JS, Singh S, Thukral B, Reddy PH, Bhatti GK
- 2078** Role of prebiotics, probiotics, and synbiotics in management of inflammatory bowel disease: Current perspectives
Roy S, Dhaneshwar S
- 2101** Changing trends in the minimally invasive surgery for chronic pancreatitis
Kalayarasan R, Shukla A
- 2114** Challenges in pediatric inherited/metabolic liver disease: Focus on the disease spectrum, diagnosis and management of relatively common disorders
Zou YG, Wang H, Li WW, Dai DL

MINIREVIEWS

- 2127** COVID-19 related biliary injury: A review of recent literature
Yadlapati S, Jarrett SA, Baik D, Chaaya A

ORIGINAL ARTICLE

Basic Study

- 2134** Anti-inflammatory effect and antihepatoma mechanism of carrimycin
Li XY, Luo YT, Wang YH, Yang ZX, Shang YZ, Guan QX
- 2153** Effect and mechanism of reactive oxygen species-mediated NOD-like receptor family pyrin domain-containing 3 inflammasome activation in hepatic alveolar echinococcosis
Chen CS, Zhang YG, Wang HJ, Fan HN
- 2172** Changes in the gut mycobiome in pediatric patients in relation to the clinical activity of Crohn's disease
Krawczyk A, Salamon D, Kowalska-Duplaga K, Zapala B, Książek T, Drażniuk-Warchol M, Gosiewski T

Retrospective Cohort Study

- 2188** Acoustic radiation force impulse predicts long-term outcomes in a large-scale cohort: High liver cancer, low comorbidity in hepatitis B virus
Tai J, Harrison AP, Chen HM, Hsu CY, Hsu TH, Chen CJ, Jeng WJ, Chang ML, Lu L, Tai DI

SYSTEMATIC REVIEWS

- 2202 Effectiveness of *Helicobacter pylori* eradication in the treatment of early-stage gastric mucosa-associated lymphoid tissue lymphoma: An up-to-date meta-analysis

Lemos FFB, Castro CT, Calmon MS, Silva Luz M, Pinheiro SLR, Faria Souza Mendes dos Santos C, Correa Santos GL, Marques HS, Delgado HA, Teixeira KN, Souza CL, Oliveira MV, Freire de Melo F

ABOUT COVER

Editorial Board Member of *World Journal of Gastroenterology*, Masataka Kikuyama, MD, PhD, Associate Professor, Department of Gastroenterology, Tokyo Women's Medical University, 8-1 Kawadacho, Shinjuku-ku, Tokyo 162-8666, Japan. kikuyama.masataka@twmu.ac.jp

AIMS AND SCOPE

The primary aim of *World Journal of Gastroenterology* (WJG, *World J Gastroenterol*) is to provide scholars and readers from various fields of gastroenterology and hepatology with a platform to publish high-quality basic and clinical research articles and communicate their research findings online. WJG mainly publishes articles reporting research results and findings obtained in the field of gastroenterology and hepatology and covering a wide range of topics including gastroenterology, hepatology, gastrointestinal endoscopy, gastrointestinal surgery, gastrointestinal oncology, and pediatric gastroenterology.

INDEXING/ABSTRACTING

The WJG is now abstracted and indexed in Science Citation Index Expanded (SCIE, also known as SciSearch®), Current Contents/Clinical Medicine, Journal Citation Reports, Index Medicus, MEDLINE, PubMed, PubMed Central, Scopus, Reference Citation Analysis, China National Knowledge Infrastructure, China Science and Technology Journal Database, and Superstar Journals Database. The 2022 edition of Journal Citation Reports® cites the 2021 impact factor (IF) for WJG as 5.374; IF without journal self cites: 5.187; 5-year IF: 5.715; Journal Citation Indicator: 0.84; Ranking: 31 among 93 journals in gastroenterology and hepatology; and Quartile category: Q2. The WJG's CiteScore for 2021 is 8.1 and Scopus CiteScore rank 2021: Gastroenterology is 18/149.

RESPONSIBLE EDITORS FOR THIS ISSUE

Production Editor: Hua-Ge Yu; Production Department Director: Xu Guo; Editorial Office Director: Jia-Ru Fan.

NAME OF JOURNAL

World Journal of Gastroenterology

ISSN

ISSN 1007-9327 (print) ISSN 2219-2840 (online)

LAUNCH DATE

October 1, 1995

FREQUENCY

Weekly

EDITORS-IN-CHIEF

Andrzej S Tarnawski

EDITORIAL BOARD MEMBERS

<http://www.wjgnet.com/1007-9327/editorialboard.htm>

PUBLICATION DATE

April 14, 2023

COPYRIGHT

© 2023 Baishideng Publishing Group Inc

INSTRUCTIONS TO AUTHORS

<https://www.wjgnet.com/bpg/gerinfo/204>

GUIDELINES FOR ETHICS DOCUMENTS

<https://www.wjgnet.com/bpg/GerInfo/287>

GUIDELINES FOR NON-NATIVE SPEAKERS OF ENGLISH

<https://www.wjgnet.com/bpg/gerinfo/240>

PUBLICATION ETHICS

<https://www.wjgnet.com/bpg/GerInfo/288>

PUBLICATION MISCONDUCT

<https://www.wjgnet.com/bpg/gerinfo/208>

ARTICLE PROCESSING CHARGE

<https://www.wjgnet.com/bpg/gerinfo/242>

STEPS FOR SUBMITTING MANUSCRIPTS

<https://www.wjgnet.com/bpg/GerInfo/239>

ONLINE SUBMISSION

<https://www.f6publishing.com>



Retrospective Cohort Study

Acoustic radiation force impulse predicts long-term outcomes in a large-scale cohort: High liver cancer, low comorbidity in hepatitis B virus

Jennifer Tai, Adam P Harrison, Hui-Ming Chen, Chiu-Yi Hsu, Tse-Hwa Hsu, Cheng-Jen Chen, Wen-Juei Jeng, Ming-Ling Chang, Le Lu, Dar-In Tai

Specialty type: Gastroenterology and hepatology

Provenance and peer review: Invited article; Externally peer reviewed.

Peer-review model: Single blind

Peer-review report's scientific quality classification

Grade A (Excellent): 0
Grade B (Very good): B
Grade C (Good): C, C
Grade D (Fair): 0
Grade E (Poor): 0

P-Reviewer: Brandi G, Italy; Li S, China; Tavan H, Iran

Received: December 16, 2022

Peer-review started: December 16, 2022

First decision: January 11, 2023

Revised: January 15, 2023

Accepted: March 23, 2023

Article in press: March 23, 2023

Published online: April 14, 2023



Jennifer Tai, Tse-Hwa Hsu, Cheng-Jen Chen, Wen-Juei Jeng, Ming-Ling Chang, Dar-In Tai, Department of Gastroenterology and Hepatology, Chang Gung Memorial Hospital, Taoyuan 33305, Taiwan

Adam P Harrison, Radiomics Group, Q Bio, San Carlos, CA 94063, United States

Hui-Ming Chen, Chiu-Yi Hsu, Center for Big Data Analytics and Statistics, Chang Gung Memorial Hospital, Taoyuan 33305, Taiwan

Le Lu, DAMO Academy, Alibaba Group, New York, NY 94085, United States

Corresponding author: Dar-In Tai, MD, PhD, Professor, Department of Gastroenterology and Hepatology, Chang Gung Memorial Hospital, No. 5 Fuxing Street, Guishan Dist, Taoyuan 33305, Taiwan. tai48978@cgmh.org.tw

Abstract

BACKGROUND

Acoustic radiation force impulse (ARFI) is used to measure liver fibrosis and predict outcomes. The performance of elastography in assessment of fibrosis is poorer in hepatitis B virus (HBV) than in other etiologies of chronic liver disease.

AIM

To evaluate the performance of ARFI in long-term outcome prediction among different etiologies of chronic liver disease.

METHODS

Consecutive patients who received an ARFI study between 2011 and 2018 were enrolled. After excluding dual infection, alcoholism, autoimmune hepatitis, and others with incomplete data, this retrospective cohort were divided into hepatitis B (HBV, $n = 1064$), hepatitis C (HCV, $n = 507$), and non-HBV, non-HCV (NBNC, $n = 391$) groups. The indexed cases were linked to cancer registration (1987-2020) and national mortality databases. The differences in morbidity and mortality among the groups were analyzed.

RESULTS

At the enrollment, the HBV group showed more males (77.5%), a higher prevalence of pre-diagnosed hepatocellular carcinoma (HCC), and a lower prevalence of comorbidities than the other groups ($P < 0.001$). The HCV group was older and had a lower platelet count and higher ARFI score than the other groups ($P < 0.001$). The NBNC group showed a higher body mass index and platelet count, a higher prevalence of pre-diagnosed non-HCC cancers ($P < 0.001$), especially breast cancer, and a lower prevalence of cirrhosis. Male gender, ARFI score, and HBV were independent predictors of HCC. The 5-year risk of HCC was 5.9% and 9.8% for those ARFI-graded with severe fibrosis and cirrhosis. ARFI alone had an area under the receiver operating characteristic curve (AUROC) of 0.742 for prediction of HCC in 5 years. AUROC increased to 0.828 after adding etiology, gender, age, and platelet score. No difference was found in mortality rate among the groups.

CONCLUSION

The HBV group showed a higher prevalence of HCC but lower comorbidity that made mortality similar among the groups. Those patients with ARFI-graded severe fibrosis or cirrhosis should receive regular surveillance.

Key Words: Non-alcoholic fatty liver disease; Hepatitis B; Hepatocellular carcinoma; Acoustic radiation force impulse; Mortality; Comorbidity

©The Author(s) 2023. Published by Baishideng Publishing Group Inc. All rights reserved.

Core Tip: Among 1962 patients who received an acoustic radiation force impulse (ARFI) study, the 5-year risk of hepatocellular carcinoma (HCC) was 5.9% and 9.8% for those ARFI-graded with severe fibrosis and cirrhosis, respectively. The prevalence of HCC was highest in the hepatitis B virus (HBV) group. However, the HBV group showed the lowest comorbidities among the groups after adjusting for age, gender, and body mass index. This made the mortality rate similar among the groups. ARFI alone had an area under the receiver operating characteristic curve (AUROC) of 0.742 for prediction of HCC in 5 years. The AUROC increased to 0.828 after adding etiology, gender, age, and platelet score. Those patients with ARFI-estimated severe fibrosis or cirrhosis should receive active surveillance of HCC in all etiologies.

Citation: Tai J, Harrison AP, Chen HM, Hsu CY, Hsu TH, Chen CJ, Jeng WJ, Chang ML, Lu L, Tai DI. Acoustic radiation force impulse predicts long-term outcomes in a large-scale cohort: High liver cancer, low comorbidity in hepatitis B virus. *World J Gastroenterol* 2023; 29(14): 2188-2201

URL: <https://www.wjgnet.com/1007-9327/full/v29/i14/2188.htm>

DOI: <https://dx.doi.org/10.3748/wjg.v29.i14.2188>

INTRODUCTION

Chronic liver diseases are major risk factors for hepatocellular carcinoma (HCC)[1,2]. Regular screening of high-risk groups to detect HCC in the early stage can increase the chance to eradicate HCC and improve survival rates[3,4]. Liver cirrhosis is a major HCC risk factor[1-4]. In the last two decades, Fibroscan has been used to assess the HCC risk for patients with chronic liver diseases[5-9]. An alternative is the acoustic radiation force impulse (ARFI) imaging which uses ultrasound as a push pulse to measure the liver stiffness[10-12]. Both modalities are quite good in patients with chronic hepatitis C virus (HCV) infection and non-alcoholic liver diseases[13]. However, the correlation was relatively poor in patients with chronic hepatitis B virus (HBV) infection. We have been using ARFI to assess liver stiffness since 2011[12,13], which allowed the informatics department in our institute to produce a uniquely available large-scale cohort of patient data for research purposes. This would facilitate us to evaluate the ability of ARFI to assess the HCC risk using a consecutive cohort that is much larger than what has been found in prior work. The short-term correlation between ARFI and liver fibrosis is relatively poor in HBV, but the long-term effect is still not fully investigated. As well, studies into the predictive ability of ARFI for HCC among patients with different etiologies of chronic liver disease are still rare[14]. Finally, the chronic HBV infection is characterized by an initial immune tolerance phase[15]. This could be a survival strategy[16] despite an increased risk of HCC caused by chronic persistent HBV infection[1,2,17,18]. Therefore, we examined the differences in morbidities and mortalities between HBV and other etiologies in this cohort to help shed some light on this question.

MATERIALS AND METHODS

This study was approved by the Institutional Review Board (IRB) of the Chang Gung Medical Foundation (CGMH IRB No. 201801283B0 and No. 202200758B0).

ARFI measurement

ARFI imaging was done with an Acuson S2000 system (Siemens Medical Solutions). Liver stiffness was measured with a standardized protocol at two locations of the right hepatic lobe[12,13]. The mean of the two locations was used as the final measurement. Most of the studies were done by one senior technician (HTW). Because it is not covered by the Taiwanese National Health Insurance Administration, the charge of ARFI (around 50 United States dollars) was mostly paid by the patients. The exceptions were patients undergoing a liver biopsy study or those participating in clinical trials (around 25%), where the cost was paid for by research grants. The first ARFI study was used in this analysis. The ARFI-estimated fibrosis grades was according to the cutoff values in our previous histology proven study[13].

Patients

The data of this study were retrieved from the Chang Gung Research Database of the Chang Gung Memorial Hospital, Linkou and Taipei branches. All patients who received ARFI imaging between January 2011 and September 2018 represented as the index patients. A total population of 2405 patients were included. The Chang Gung Research Database includes the original electronic medical records, comprising health care facility information, patient demographics, diagnosis information, drug information, procedure information, and other health digital information. All the personal identifiers were replaced by a code. We organized a team that included researchers from both hepatology and informatics departments of Chang Gung Memorial Hospital, along with outside technical consultants, to deal with this project[19]. We excluded patients with incomplete viral markers and clinical data, dual viral hepatitis, alcoholic liver diseases, autoimmune liver diseases, toxic hepatitis, genetic liver diseases, and those whose ARFI studies were with an interquartile range over a median ratio > 30%, which is a recommended quality assurance criterion (Figure 1)[20]. According to the viral markers, patients were classified into three groups: Hepatitis B, hepatitis C, and non-hepatitis B, non-hepatitis C (NBNC) patients. The NBNC group consisted mostly of patients with non-alcoholic fatty liver disease[19]. All the patients were followed for liver biochemistry, alpha-fetoprotein, and liver ultrasound at 3-12-mo intervals.

Comorbidity

The comorbidities under investigation included hypertension [I10-I15], type 2 diabetes mellitus [E8-13], dyslipidemia [E78], myocardial infarction [I21-I23, I1252], atrial fibrillation [I48], heart failure [I50], and ischemic stroke [I63-I66]. The ascertainment of these comorbidities was based on three diagnoses from the outpatient department or one diagnosis from the inpatient department.

Antiviral therapy

Patients could have undergone any of several different antiviral regimens in the study period. Similar interferon regimens had been used in both HBV and HCV groups, and such immune modulatory regimens were not uniform. Therefore, we simply recorded whether interferon therapy was given pre-enrollment or post-enrollment.

Similarly, multiple nucleot(s)ide analogue (NA) regimens for HBV and direct antiviral agent (DAA) regimens for HCV were possibly taken in the study period. Their mechanisms are suppression or elimination of viral replication. We recorded such oral therapies in pre-enrollment and/or post-enrollment periods as one category.

Cancer registration data link

In addition to their medical records, study subjects were linked with the database of Cancer Registration, Chang Gung Memorial Hospital, which records information on all cancers diagnosed in this hospital since 1987. We linked this database up to June 30, 2020.

Mortality data link

This study used the national citizen identification numbers of patients to search the mortality data bank established by the Statistics Office, Department of Health, Taiwan. The mortality data bank stored death certificate data, which includes patient demographic data such as the time, place, and cause of death, and the name of the official who issued the document. Causes of death were classified using the International Classifications of Diseases, Injuries and Causes of Death (ICD-10, World Health Organization, 2015). The data was linked up to December 31, 2020.

This mortality data link will collect data for those patients lost to follow-up in this hospital.

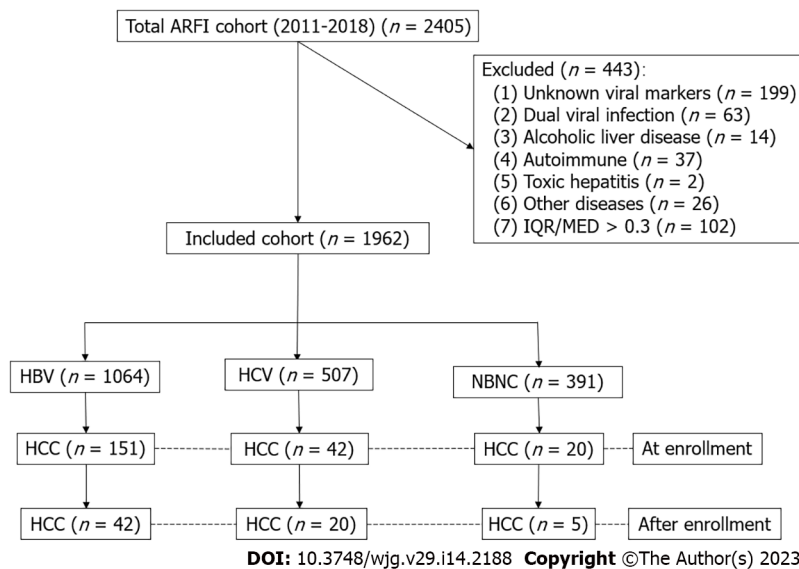


Figure 1 Patient flow chart. HCC: Hepatocellular carcinoma; ARFI: Acoustic radiation force impulse; HBV: Hepatitis B; HCV: Hepatitis C; NBNC: Non-hepatitis B, hepatitis C.

Statistical analysis

Patient characteristics are represented as the number and percentage, or the mean \pm SD, as appropriate. Continuous variables of the three independent groups were compared using one-way analysis of variance (ANOVA) with Bonferroni correction. Categorical variables were tested using the chi-square test, or the chi-square test for trend, as applicable. Logistic regression was conducted to identify independent risk factors for HCC for records before the ARFI study. Cox proportional hazards model was conducted to identify independent risk factors of HCC for records after the ARFI study. The Mantel-Cox procedure (Log Rank test) was applied to compare risk factors and the cumulative risk of HCC among different groups after the ARFI study. The area under the receiver operating characteristic curve (AUROC) was calculated using a scoring system for HCC risk prediction. The scoring system was based on the hazard ratio in the multivariate analysis. Briefly, ARFI and FIB4 were according to its values and modified by timing 0.5 or 2. Other factors were calculated as: Gender (G) (male = 2, female = 0); etiology score (E) (HBV = 3, HCV = 2, NBNC = 1); age (year) score (A) (0-35 = 0, 35-40 = 1, 40-45 = 2, 45-50 = 3, 50-55 = 4, 55-60 = 5; > 60 = 6; platelet ($10^9/L$) score (A) (0-100 = 3, 100-150 = 2, > 150 = 1). Statistical analyses were performed using the SPSS software (version 22; SPSS Inc., Chicago, IL, United States), and a *P* value of < 0.05 was judged as statistically significant.

RESULTS

Baseline demographic features

A total of 1962 patients met our inclusion criteria. Among them, 1064, 507, and 391 patients were in the HBV, HCV, and NBNC groups, respectively (Table 1). The HBV group had more men and a lower prevalence of hypertension, diabetes mellitus, heart failure, ischemic stroke, and dyslipidemia. Patients in the HCV group were older and had a lower male ratio, lower platelet counts, higher fibrosis index based on four factors (FIB4), and mean ARFI score. The NBNC group had a higher body mass index (BMI), lower prothrombin time and international normalized ratios (INR), lower FIB4, higher platelet count, lower rate of estimated cirrhosis, and shorter duration of follow-up.

Alanine aminotransferase level grades at the enrollment

ARFI is strongly influenced by liver inflammation. This especially happens when alanine aminotransferase (ALT) levels are greater than $5 \times (180 \text{ U/L})$ the upper limit of normal (0-36). So, we list the ALT level grades in the Supplementary Table 1. In total, 7.3% of patients had ALT level greater than 180 U/L.

Comorbidity

There were significant differences in the prevalence of hypertension, diabetes mellitus, heart failure, ischemic stroke, and dyslipidemia between the HBV group and the other two groups (Table 1). After adjusting for age, gender, and BMI, the prevalence of hypertension, diabetes mellitus, ischemic stroke, and dyslipidemia was significantly lower in the HBV group than in the non-HBV groups (Supplementary Table 2).

Table 1 Baseline demographic features of the cohort

	HBV (<i>n</i> = 1064)	HCV (<i>n</i> = 507)	NBNC (<i>n</i> = 391)	<i>P</i> value	Missing rate
Demographics					
Age (yr)	52.05 ± 10.90	58.69 ± 10.84	51.97 ± 13.10	< 0.0001 (2 & 3, 1 & 2)	0.00%
Male sex, <i>n</i> (%)	825 (77.5)	273 (53.8)	233 (59.6)	< 0.0001	0.00%
Weight (kg)	68.36 ± 12.30	64.53 ± 12.17	70.94 ± 14.09	< 0.0001 (2 & 3, 1 & 2, 1 & 3)	0.97%
Height (cm)	166.34 ± 7.62	161.67 ± 8.57	164.18 ± 8.75	< 0.0001 (2 & 3, 1 & 2, 1 & 3)	2.80%
BMI (kg/m ²)	24.66 ± 3.62	24.58 ± 3.75	26.25 ± 4.23	< 0.0001 (2 & 3, 1 & 3)	3.47%
Lab data at ARFI study					
Spleen index (cm ²)	31.97 ± 14.47	33.63 ± 16.72	34.07 ± 16.05	0.0640 (1 & 3)	0.03%
Albumin (mg/dL)	4.345 ± 0.51	4.29 ± 0.51	4.43 ± 0.48	0.0040 (2 & 3)	42.15%
AST (U/L)	57.50 ± 102.16	62.46 ± 58.08	58.40 ± 50.72		1.12%
ALT (U/L)	75.05 ± 162.88	71.52 ± 69.61	83.46 ± 78.32		1.33%
Bilirubin (mg/dL)	0.93 ± 1.23	0.91 ± 1.19	0.92 ± 1.21		12.79%
Prothrombin time (INR)	1.10 ± 0.13	1.11 ± 0.21	1.06 ± 0.13	0.0040 (2 & 3, 1 & 3)	42.15%
Platelets (10 ⁹ /L)	177.86 ± 61.86	170.13 ± 60.19	218.96 ± 76.08	< 0.0001 (2 & 3, 1 & 3)	13.25%
FIB4	2.454 ± 2.720	3.31 ± 3.04	2.06 ± 2.13	< 0.0001 (2 & 3, 1 & 2)	23.35%
Mean ARFI (m/s) ¹	1.40 ± 0.46	1.60 ± 0.61	1.42 ± 0.62	< 0.0001 (2 & 3, 1 & 2)	0.00%
Stiffness status ¹				< 0.0001	
Cirrhosis	331 (31.1)	163 (32.1)	78 (19.9)		
Severe fibrosis	138 (13.0)	110 (21.7)	61 (15.6)		
Moderate fibrosis	114 (10.7)	68 (13.4)	29 (7.4)		
Mild or non-fibrosis	481(45.2)	166(32.7)	223(57.0)		
Comorbidities					
Hypertension	181 (17.0)	147 (29.0)	115 (29.4)	< 0.0001	
Diabetes	119 (11.2)	103 (20.3)	76 (19.4)	< 0.0001	
Heart failure	14 (1.3)	17 (3.4)	7 (1.8)	0.023	
Atrial fibrillation	9 (0.8)	11 (2.2)	5 (1.3)	0.091	
Myocardial infraction	12 (1.1)	5 (1.0)	2 (0.5)	0.567	
Ischemic stroke	6 (0.6)	17 (3.4)	8 (2.0)	< 0.0001	
Dyslipidemia	170 (16.0)	95 (18.7)	125 (32.0)	< 0.0001	
Follow-up (year)					
mean ± SD	4.59 ± 2.22	4.34 ± 2.35	3.13 ± 2.15	< 0.0001 (1 & 3, 2 & 3)	
Median/IQR	4.54/3.59	3.97/3.88	2.61/3.23		

¹Cutoff values according to reference 11.

ARFI: Acoustic radiation force impulse; FIB4: Fibrosis-4 index; BMI: Body mass index; HBV: Hepatitis B; HCV: Hepatitis C; NBNC: Non-hepatitis B, non-hepatitis C; ALT: Alanine aminotransferase; AST: Aspartate aminotransferase.

Cancers diagnosed before ARFI study

We linked our index cases with cancer registration databases between 1987 and 2020. There were many cancer diagnoses prior to enrollment. These cancers were either well-treated or receiving active therapy. The HBV group had the highest rate of pre-enrollment HCC diagnosis (14.1%, $P < 0.001$, Table 2, upper panel). On the other hand, the NBNC group had the highest rate of non-HCC cancer (10%, $P < 0.001$), with breast cancer having the highest rate (4.3% for total or 10.8% for females alone, $P < 0.001$). Factors associated with a high risk of HCC as identified by logistic regression were male sex, high mean ARFI

Table 2 Cancers and mortality in different groups

	HBV	HCV	NBNC	P value
Total cases	1064	507	391	
Female	239 (22.5)	234 (46.2)	158 (40.4)	< 0.027
Follow years before enrollment	-2.65 ± 3.98	-2.78 ± 5.56	-3.30 ± 6.25	< 0.001 (3 & 1, 3 & 2)
Cancers, pre-enrollment				
HCC	150 (14.1)	42 (8.3)	20 (5.1)	< 0.001
Non-HCC cancer	36 (3.4)	30 (5.9)	39 (10.0)	< 0.001
Colon cancer	9 (0.8)	3 (0.6)	6 (1.5)	NS
Breast cancer	1 (0.1)	9 (1.8)	17 (4.3)	< 0.001 ¹
Hematology cancers	3 (0.3)	4 (0.8)	2 (0.5)	NS
Follow years before enrollment	-2.76 ± 4.55	-3.57 ± 5.18	-3.22 ± 4.40	NS
Cancers, post-enrollment				
HCC	43 (4.0)	19 (3.7)	5 (1.3)	0.033
Non-HCC tumor	21 (2.2)	14 (2.8)	12 (3.1)	NS
Colon cancer	2 (0.1)	3 (0.6)	1 (0.3)	NS
Breast cancer	2 (0.2)	0 (0.0)	1 (0.3)	NS
Hematology cancers	6 (0.6)	0 (0.0)	1 (0.5)	NS
Prostate cancer	2 (0.1)	1 (0.2)	1 (0.3)	NS
Follow years after enrollment	2.43 ± 1.86	2.51 ± 1.86	2.25 ± 2.00	NS
Mortality total	72 (6.8)	41 (8.1)	21 (5.4)	NS
HCC	35 (3.3)	13 (2.6)	4 (1.0) ²	0.057
Non-HCC cancers	16 (1.5)	8 (1.6)	7 (1.8) ²	NS
Liver disease	6 (0.6)	7 (1.4)	6 (1.5)	NS
Non-liver disease	15 (1.4)	13 (2.6)	4 (1.0)	NS
Follow years after enrollment	2.59 ± 1.96	2.69 ± 1.99	2.00 ± 1.87	NS

¹Female only.²P = 0.027.

Remark: Different cancers on the same patient were counted separately. HCC: Hepatocellular carcinoma; HBV: Hepatitis B; HCV: Hepatitis C; NBNC: Non-hepatitis B, non-hepatitis C; NS: Not significant.

score, HBV, older age, higher aspartate aminotransferase (AST) level, lower ALT level, and lower platelet count (Table 3). Hypertension and diabetes mellitus were associated with a higher risk of pre-diagnosed HCC while dyslipidemia was associated with a lower risk of pre-diagnosed HCC.

Cancers diagnosed after ARFI

After excluding patients with cancer diagnosed before enrollment, the HBV (4.0%) and NBNC (1.3%) groups exhibited the highest and lowest rates of HCC occurrence, respectively ($P = 0.033$, Table 2, middle panel). Factors associated with HCC diagnosis were male sex ($P = 0.013$), high ARFI score (< 0.001), and HBV ($P = 0.019$, Table 4). In Cox's regression analysis, male gender, HBV, platelet count, and ARFI score were associated with a higher risk of HCC.

HCC development after enrollment in subjects with different fibrosis stages

According to the cutoff values of mean ARFI determined in our previous histology proven cases[13], we divided the study population into cirrhosis, severe fibrosis, moderate fibrosis, and mild to non-fibrosis groups. The cumulative risk of HCC development was highest in the cirrhosis group, followed by the severe fibrosis group, and lowest in the none to moderate fibrosis groups ($P < 0.001$, Figure 2). The 5-year risk of HCC was 5.9% and 9.8% for those patients ARFI-graded with severe fibrosis and cirrhosis, respectively. When those patients with ALT greater than 5 × upper limit normal were removed, the 5-year risk of HCC was 6.1% and 10.4% for those with severe fibrosis and cirrhosis, respectively.

Table 3 Logistic regression for hepatocellular carcinoma diagnosed before enrollment

	Univariate analysis	Multivariate analysis	95%CI		
	P value	P value	Hazard ratio	Lower	Upper
Male	< 0.001	0.000	3.399	2.150	5.373
Etiology	< 0.001	0.000	-	-	-
HBV		0.000	4.009	2.219	7.241
HCV		0.169	1.644	0.810	3.335
Age, yr	< 0.001	0.000	1.047	1.029	1.066
ALT	0.243	0.001	0.993	0.989	0.997
AST	0.010	0.000	1.012	1.007	1.017
Bilirubin	0.170	0.729	0.980	0.875	1.098
Platelet	0.138	0.035	1.003	1.000	1.005
Spleen index	0.060	0.811	1.001	0.990	1.013
BMI	0.015	0.076	0.956	0.910	1.005
ARFI	< 0.001	0.010	1.556	1.110	2.181
Interferon therapy	0.011	0.012			
Pre-enrollment		0.618	1.204	0.581	2.496
Post-enrollment		0.004	0.211	0.073	0.617
Oral anti-virus agents	0.041	0.181			
Pre-enrollment		0.168	1.721	0.795	3.728
Post-enrollment		0.156	0.667	0.381	1.167
Pre- and post-enrollment		0.527	1.534	0.408	5.773
Hypertension	< 0.001	0.000	2.551	1.702	3.824
Diabetes mellitus	< 0.001	0.031	1.618	1.044	2.508
Dyslipidemia	< 0.001	0.000	0.358	0.207	0.620
Ischemic stroke	0.341	0.884	1.097	0.317	3.794

1481/1962 (75.5%) with complete data; cases (hepatocellular carcinoma), $n = 189$. HBV: Hepatitis B; HCV: Hepatitis C; ALT: Alanine aminotransferase; AST: Aspartate aminotransferase; BMI: Body mass index; ARFI: Acoustic radiation force impulse.

(Supplementary Figure 1). There was no difference in predictive abilities across different etiologies (Supplementary Figure 2), suggesting that high ARFI score is a good predictor of HCC diagnosis for HBV patients, along with HCV and NBNC patients.

AUROC of different non-invasive scoring models for HCC prediction

The AUROCs showed that ARFI or FIB4 alone gave similar 3- or 5-year predictions of HCC (AUROCs around 0.739-0.756) (Figure 3). After adding gender, etiology, age, and platelet score, the AUROCs increased to 0.772-0.840.

Mortality during study period

No significant difference in total mortality was found across the three groups. The HBV group had a marginally higher HCC related mortality (3.3%, $P = 0.057$) (Table 2, lower panel). However, the non-HCC related mortality was the lowest in the HBV group ($P < 0.027$). Male sex, age, lower ALT level, higher AST level, lower BMI, higher ARFI score, and ischemic stroke were associated with a higher risk of mortality in Cox's regression analysis (Supplementary Table 3).

DISCUSSION

In our patient cohort, 212 patients were diagnosed with HCC prior to enrollment and 67 developed

Table 4 Cox's regression analysis for hepatocellular carcinoma occurring after enrollment

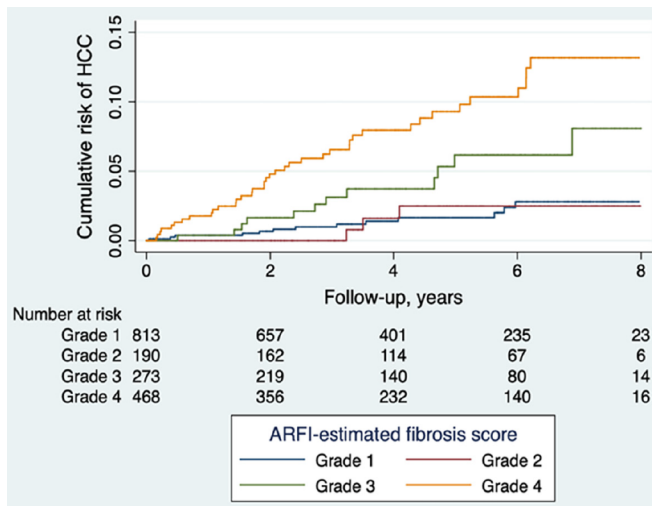
	Univariate analysis	Multivariate analysis	95%CI		
	P value	P value	Hazard ratio	Lower	Upper
Male	0.005	0.009	20.796	1.293	6.045
Etiology	0.019	0.057			
HBV		0.023	40.473	1.232	16.245
HCV		0.150	20.670	0.701	10.173
Age (yr)	< 0.001	0.094	10.028	0.995	1.061
ALT (U/L)	0.188	0.211	0.994	0.985	1.003
AST (U/L)	0.605	0.449	10.005	0.993	1.017
Bilirubin (mg/dL)	0.962	0.326	0.772	0.460	1.295
Platelet (10 ⁹ /L)	< 0.001	0.041	0.993	0.986	1.000
Spleen index (cm ³)	0.019	0.169	10.012	0.995	1.030
BMI	0.334	0.524	0.973	0.894	1.059
ARFI (m/s)	< 0.001	0.000	20.775	10.624	4.742
Interferon therapy	0.814	0.943			
Pre-enrollment		0.734	0.772	0.174	3.435
Post-enrollment		0.914	0.949	0.366	2.459
Oral anti-virus therapy	0.0174	0.086			
Pre-enrollment		0.977	10.031	0.134	7.948
Post-enrollment		0.029	20.105	10.080	4.102
Pre- and post-enrollment		0.110	30.362	0.758	14.903
Hypertension	0.001	0.211	10.554	0.778	3.104
Diabetes mellitus	0.002	0.304	10.460	0.710	3.006
Ischemic stroke	0.305	0.971	00.000	0.000	1.46E+269
Dyslipidemia	0.233	0.065	10.920	0.960	3.840

1274/1749 (72.8%) with complete data, 49 cases (hepatocellular carcinoma). HBV: Hepatitis B; HCV: Hepatitis C; ALT: Alanine aminotransferase; AST: Aspartate aminotransferase; BMI: Body mass index; ARFI: Acoustic radiation force impulse.

HCC after enrollment (Table 2). High ARFI scores were associated with pre-diagnosed HCC occurrences in a multivariate analysis ($P < 0.001$, Table 3) and were a good predictor of HCC after enrollment according to Cox's regression analysis ($P < 0.001$, Table 4). The ARFI-estimated fibrosis grades showed a severity-dependent increased risk of HCC in the post-enrollment period (Figure 2). The 5-year risk of HCC was 5.9% and 9.8% for those patients who were ARFI-graded with severe fibrosis and cirrhosis, respectively. When age, gender, and platelet count were added, there was only a small rise of AUROC from 0.753 to 0.84 within 3 years and 0.742 to 0.828 within 5 years in the prediction of HCC. These results suggest that liver fibrosis is the main risk factor for HCC (Figure 3). Our finding is consistent with others in a recent study review[21] using non-invasive fibrosis diagnosis models. Patients with grades 3 and 4 fibrosis should receive active surveillance of HCC.

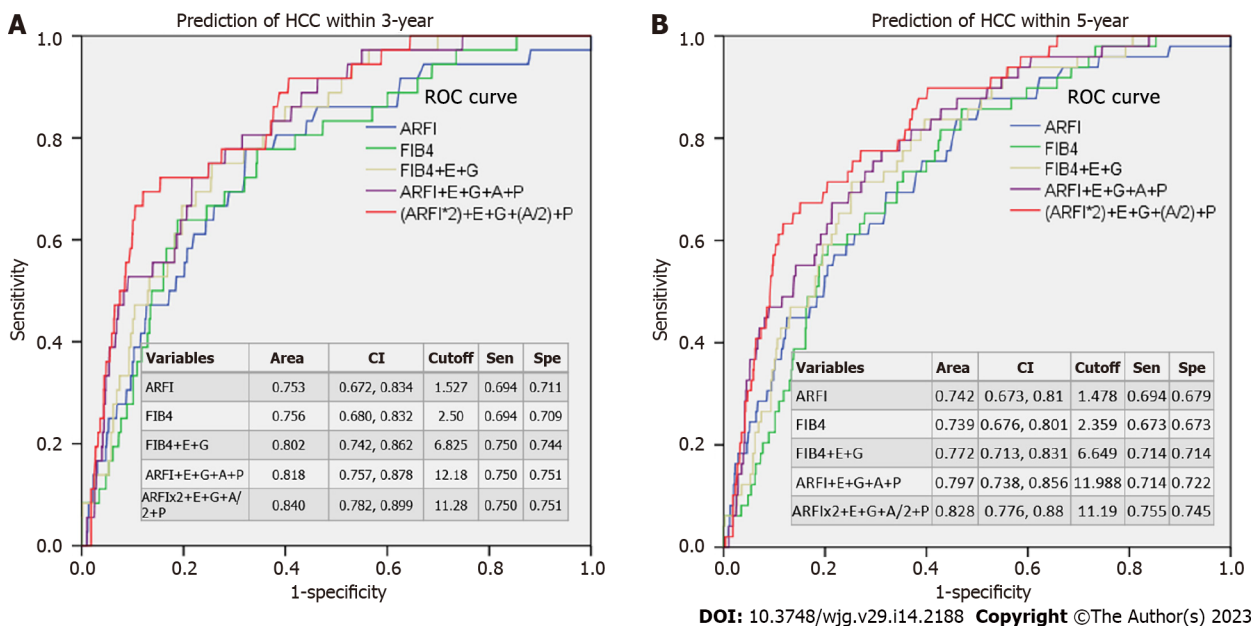
ARFI-graded fibrosis predicts the HCC occurrence well among different etiologies (Supplementary Figure 2). Although the correlation between ARFI and liver histology fibrosis was poorer in the HBV group[13] than in the other two etiologies, HCC risk prediction was as good as that in the other groups. This question was not well-addressed in prior work where such investigations had much smaller clinical datasets or single etiology cohorts. Additional investigations should further pursue this link.

In terms of prior work, ARFI studies on non-HCC patients typically focused on its utility of fibrosis staging[10-12,22]. Exceptions include the work by Sun *et al*[23], who correlated ARFI with the indocyanine green test and found a positive correlation between the two. ARFI was also correlated to Child-Pugh scores in that study. They suggested that ARFI imaging is a useful tool for assessing liver functional reserve. As another example, a recent meta-analysis reported that ARFI scores may be a good



DOI: 10.3748/wjg.v29.i14.2188 Copyright ©The Author(s) 2023.

Figure 2 Cumulative risk of hepatocellular carcinoma after enrollment in different acoustic radiation force impulse-fibrosis grades. Higher risk of hepatocellular carcinoma (HCC) was found in acoustic radiation force impulse (ARFI)-severe fibrosis and -cirrhosis grades than in none to moderate fibrosis grades. The 5-year risk of HCC was 9.8 % for ARFI fibrosis graded as cirrhosis; 5.9% for that graded as severe fibrosis; and only 1.7%-2.0% for that lower or equal to moderate fibrosis. Purple: Cirrhosis; Yellow: Severe fibrosis; Green: Moderate fibrosis, Blue: None or mild fibrosis [Log rank test: $P = 0.026$ (3 vs 4); $P = 0.015$ (3 vs 1 + 2); $P < 0.001$ (4 vs 1 + 2)]. HCC: Hepatocellular carcinoma; ARFI: Acoustic radiation force impulse.



DOI: 10.3748/wjg.v29.i14.2188 Copyright ©The Author(s) 2023.

Figure 3 Area under the receiver operating characteristic curve of hepatocellular carcinoma prediction in different non-invasive scoring models. A: Within 3-year period after enrollment; B: Within 5-year period after enrollment. The area under the receiver operating characteristic curve (AUROC) shows that acoustic radiation force impulse (ARFI) or FIB4 alone give similar 3- or 5-year predictions of hepatocellular carcinoma (HCC) (AUROC around 0.739-0.756). After adding G (gender score), E (etiology score), A (age score), and P (platelet score), the AUROC may increase to 0.772-0.840. Both ARFI and FIB4 models predict 3- or 5-year HCC quite satisfactorily, suggesting that fibrosis is the main risk factor for HCC. ARFI: Acoustic radiation force impulse; FIB4: Fibrosis-4 index based on four factors; G: Gender score, male = 2, female = 0; E: Etiology score, hepatitis B virus (HBV) = 3, HCV = 2, NBNC = 1; A: Age score (year), 0-35 = 0, 35-40 = 1, 40-45 = 2, 45-50 = 3, 50-55 = 4, 55-60 = 5, > 60 = 6; P: Platelet score (10^9), 0-100 = 3, 100-150 = 2, > 150 = 1; Sen: Sensitivity; Spe: specificity; HCC: Hepatocellular carcinoma; ARFI: Acoustic radiation force impulse; FIB4: Fibrosis-4 index.

predictor of HCC recurrence-free survival in patients receiving radiofrequency ablation[24]. In a series of 1808 patients who received ARFI, those patients with an ARFI score > 1.33 cm/s showed a higher probability of HCC development than those with an ARFI score ≤ 1.33 cm/s[25]. Therefore, there is good evidence that ARFI can measure liver fibrosis, reflex the liver functional reserve, and predict HCC recurrence. Our study adds to these conclusions, as Cox's regression analysis confirmed that high ARFI score was a risk factor for HCC and mortality ($P < 0.001$, Table 3 and Supplementary Table 3).

In aspects of HCC diagnosis, the HBV group had higher occurrences than the NBNC group (Table 2). This aligns with previous investigations, *e.g.*, the study by Chen *et al*[26] who reported higher occurrences of HCC in their HBV (4.8%) and HCV (4.7%) groups compared to their NBNC group (0.3%). Even so, the prevalence of HCC in our NBNC group was much higher than their value, but this is because Chen *et al*[26] included healthy subjects in their NBNC group, while our NBNC cohort was a disease group. Even though NBNC patients had a lower incidence of HCC ($P < 0.001$), this was offset by higher incidences of non-HCC cancers. Consequently, the total mortality rate was similar among different groups (Table 2). This is consistent with a recent meta-analysis by Mantovani *et al*[27] that concluded that extra-hepatic cancers were increased in non-alcoholic fatty liver disease. It should be noted that such trends were only identified in the pre-enrollment period because it had a longer past history. We can record many cancers in the pre-enrollment period because the diagnosis of all cancer types has been recorded in our cancer registration database since 1987. We found that breast cancer ($P < 0.001$), colon cancer, and hematologic cancers were the main cancers in the pre-enrollment period. These types of cancers respond to treatment well, allowing us to include such survivors in our cohort.

There were lower rates of comorbidities in the HBV group than in the other groups (Table 1). This seems to be related to the high prevalence of metabolic syndrome in the HCV or NBNC group. However, after adjusting for gender, age, and BMI, such a phenomenon was still present (Supplementary Table 2). As early as 2006, Jan *et al*[28] had reported a lower prevalence of diabetes, hypertension, obesity, hyperlipidemia, and obesity in HBV than HCV or NBNC in a population-based study in northern Taiwan. Another nationwide study by Kuo *et al*[29] that examined 1376344 diabetes patients between 2000 and 2012 also confirms these results. Before enrollment, they excluded patients with a history of myocardial infarction (2.28% in HBV group and 4.19% in non-HBV group, $P < 0.001$) and cerebrovascular diseases (15.6% in HBV group and 24.3% in non-HBV group, $P < 0.001$). The percentage of excluded patients was lower in their HBV group than the non-HBV groups for both diseases. After enrollment and propensity matching, the risk of all-cause mortalities, myocardial infarction, ischemic stroke, and heart failure was higher in the non-HBV group than in the HBV group ($P < 0.001$) in a mean follow-up period of 5.3 year[29]. A study by Sung *et al*[30] from Korea showed similar findings. They pointed out that the difference was more profound in HBV with liver dysfunction than in those without liver dysfunction. They suggested that the HBV-related proinflammatory effect may be the reason for the decreased risk of comorbidity.

Previous studies did not discuss the reason for these low comorbidities in the HBV patients. A recent review suggested that chronic HBV infection may protect infected subjects from the development of metabolic syndrome and hepatic steatosis[31]. The immune system is a double-edged sword. Its efforts against microorganisms may induce host tissue damage[32]. Chronic persistent HBV infection is characterized by an initial immune tolerance phase that allows active HBV replication without immune-mediated inflammation to liver tissue[33]. Liver inflammation occurs only when the immune system is triggered to attack HBV carrying hepatocytes[34]. This contrasts with HCV and NBNC groups with persistently mild inflammation in the liver.

There is a longer HBV-related immune tolerance phase in East Asian than in African, which could be related to genetic polymorphism in human leukocyte antigen (HLA)-DP and -DQ loci[16,35]. Such HBV-related gene variants not only decrease antigen presentation to avoid fatal immune response, but also establish an environment that is suitable for chronic persistent HBV infection[16]. Our recent study indicated that those HBV-related single nucleotide polymorphisms (SNPs) in HLA-DP and -DQ loci were associated with high viral load in the HCC family[36]. Such patients would be more likely to be associated with liver dysfunction as those mentioned in Sung's series[30]. From the above clues, we suspect that the low comorbidity trend in the HBV group may be partly associated with a low antigen presentation ability.

One of our limitations is that life-long disease consequences are not easy to examine. The mean follow-up duration after enrollment could be considered as relatively short (3.13 to 4.59 years). We may need longer and more specific studies to explore the link between HBV infection and comorbidity. It should be noted that HBV-related SNPs in HLA-DP and -DQ loci in East Asians are quite different from other ethnicities[16]. The low comorbidity in the HBV group may be limited to East Asian. Another limitation is that the contribution of therapy to morbidity and mortality was difficult to evaluate. We noticed that the post-enrollment interferon therapy was associated with a lower prevalence of pretreatment HCC and post-enrollment oral antiviral therapy was associated with a lower risk of post-enrollment HCC. However, these findings may be due to a relatively better condition of chronic liver disease, which could have made the pre-enrollment therapy unnecessary. Similar situations concerning about therapeutic response in HCC-related mortality could be presented. With the success of checkpoint inhibitors in HCC therapy[37], future predictive biomarker study will be needed to clarify the difference in mortality among groups[38].

CONCLUSION

We conclude that even ARFI-based fibrosis prediction in the HBV group is poorer than that in other

groups, its performance or clinical significance in predicting HCC or mortality is as good as that in other etiologies. The HBV group had the highest risk of HCC and the NBNC group had the highest risk of non-HCC tumors, especially breast cancer. Low prevalence of comorbidities in the HBV group was found, which may be a consequence of a low prevalence of metabolic syndrome and low antigen presentation ability.

ARTICLE HIGHLIGHTS

Research background

Acoustic radiation force impulse is used to measure liver fibrosis and predict outcomes. The performance of elastography in assessment of fibrosis is poorer in hepatitis B virus (HBV) than in other etiologies of chronic liver disease.

Research motivation

Whether there are differences in performance of acoustic radiation force impulse (ARFI) in long term outcome prediction among different etiologies of chronic liver disease remains to be studied.

Research objectives

We collected a cohort of patients who received ARFI studies. After excluding unsuitable cases, 1962 patients were included as the indexed cases. They were classified into HBV, HCV, and non-HBV, non-HCV (NBNC) groups. We examined the differences in demographics, comorbidity, carcinogenesis, and mortality among these groups at and after enrollment.

Research methods

These indexed cases were linked to the hospital's cancer registration and national mortality databases to obtain complete outcome data. The data at enrollment were analyzed for differences among three groups and logistic regression was performed to search for predictors associated with cancers. Cox regression analysis and area under the receiver operating characteristic curve (AUROC) were used to assess the performance of ARFI in predicting hepatocellular carcinoma (HCC) and mortality.

Research results

At enrollment, the HBV group showed more males (77.5%), a higher prevalence of pre-diagnosed HCC, and a lower prevalence of comorbidities than the other groups ($P < 0.001$). The HCV group was older and had a lower platelet count and higher ARFI score than the other groups ($P < 0.001$). The NBNC group showed a higher body mass index, platelet count, and prevalence of pre-diagnosed non-HCC cancers ($P < 0.001$), especially breast cancer, and a lower prevalence of cirrhosis. After enrollment, male gender, ARFI score, and HBV were independent predictors of HCC. The 5-year risk of HCC was 5.9% and 9.8% for those ARFI-graded with severe fibrosis and cirrhosis, respectively. ARFI alone had an AUROC of 0.742 for prediction of HCC in 5 years. AUROC increased to 0.828 after adding etiology, gender, age, and platelet score. No difference in mortality rate was noted among the groups.

Research conclusions

The HBV group showed a higher prevalence of HCC but a lower prevalence of comorbidity that made mortality similar among the groups. Those ARFI-graded as severe fibrosis or cirrhosis should receive regular surveillance.

Research perspectives

The immune tolerance is a hallmark of HBV which could be related to poor antigen presentation of human leukocyte antigen-DP and -DQ molecules in HBV surface antigen carriers. Whether such behavior is associated with a low prevalence of comorbidity requires future study.

ACKNOWLEDGEMENTS

The authors acknowledge the support and assistance in statistical analysis, study design, and data analysis and interpretation from the Maintenance Project of the Center for Big Data Analytics and Statistics at the Chang Gung Memorial Hospital. This study was based in part on data from the Chang Gung Research Database provided by Chang Gung Memorial Hospital. The interpretation and conclusions contained herein do not represent the position of Chang Gung Memorial Hospital.

FOOTNOTES

Author contributions: Tai DI contributed to study concept and design; Tai J, Chen HM, Hsu CY, Chen CJ, Jeng WJ, Chang ML, and Tai DI contributed to data acquisition; Tai J, Harrison AP, Chen HM, Hsu CY, Jeng WJ, Chang ML, and Tai DI contributed to data analysis and interpretation; Tai J, Harrison AP, and Tai DI contributed to drafting of the manuscript; Harrison AP, Jeng WJ, Chang ML, and Lu L contributed to critical review of the manuscript for important intellectual content; Tai J, Chen HM, and Hsu CY contributed to statistical analysis; Tai DI and Lu L contributed to obtaining funding; Chen HM and Hsu CY contributed to technical or material support; Tai DI contributed to study supervision.

Supported by the Chang Gung Memorial Hospital and PAII Inc. (a United States subsidiary company of Ping An Insurance Group), No. SMRPG3I0011.

Institutional review board statement: This study was reviewed and approved by the Institutional Review Board of the Chang Gung Medical Foundation (Approval No. 201801283B0 and No. 202200758B0).

Informed consent statement: The Institutional Review Board of the Chang Gung Medical Foundation waived the requirement of informed consent statement for this retrospective cohort study.

Conflict-of-interest statement: There is no conflict of interest to disclose.

Data sharing statement: No additional data is available.

STROBE statement: The authors have read the STROBE Statement – checklist of items, and the manuscript was prepared and revised according to the STROBE Statement – checklist of items.

Open-Access: This article is an open-access article that was selected by an in-house editor and fully peer-reviewed by external reviewers. It is distributed in accordance with the Creative Commons Attribution NonCommercial (CC BY-NC 4.0) license, which permits others to distribute, remix, adapt, build upon this work non-commercially, and license their derivative works on different terms, provided the original work is properly cited and the use is non-commercial. See: <https://creativecommons.org/licenses/by-nc/4.0/>

Country/Territory of origin: Taiwan

ORCID number: Jennifer Tai 0000-0002-0500-8867; Adam P Harrison 0000-0003-3315-1772; Hui-Ming Chen 0000-0003-4862-6232; Chiu-Yi Hsu 0000-0001-7171-3532; Tse-Hwa Hsu 0000-0002-1427-5676; Cheng-Jen Chen 0000-0002-0903-0682; Wen-Juei Jeng 0000-0002-3706-1259; Ming-Ling Chang 0000-0003-4902-4401; Le Lu 0000-0002-6799-9416; Dar-In Tai 0000-0003-1054-1583.

S-Editor: Chen YL

L-Editor: Wang TQ

P-Editor: Yu HG

REFERENCES

- 1 El-Serag HB, Rudolph KL. Hepatocellular carcinoma: epidemiology and molecular carcinogenesis. *Gastroenterology* 2007; **132**: 2557-2576 [PMID: 17570226 DOI: 10.1053/j.gastro.2007.04.061]
- 2 Chen CJ, Yu MW, Liaw YF. Epidemiological characteristics and risk factors of hepatocellular carcinoma. *J Gastroenterol Hepatol* 1997; **12**: S294-S308 [PMID: 9407350 DOI: 10.1111/j.1440-1746.1997.tb00513.x]
- 3 Chen CJ, Tai J, Tai DI. Hepatocellular carcinoma occurred in a Hepatitis B carrier clinic cohort during a mean follow up of 10 years. *Hepatology* 2019; **5**: 25 [DOI: 10.20517/2394-5079.2019.12]
- 4 Kansagara D, Papak J, Pasha AS, O'Neil M, Freeman M, Relevo R, Quiñones A, Motu'apuaka M, Jou JH. Screening for hepatocellular carcinoma in chronic liver disease: a systematic review. *Ann Intern Med* 2014; **161**: 261-269 [PMID: 24934699 DOI: 10.7326/M14-0558]
- 5 Masuzaki R, Tateishi R, Yoshida H, Goto E, Sato T, Ohki T, Imamura J, Goto T, Kanai F, Kato N, Ikeda H, Shiina S, Kawabe T, Omata M. Prospective risk assessment for hepatocellular carcinoma development in patients with chronic hepatitis C by transient elastography. *Hepatology* 2009; **49**: 1954-1961 [PMID: 19434742 DOI: 10.1002/hep.22870]
- 6 Wong GL, Chan HL, Wong CK, Leung C, Chan CY, Ho PP, Chung VC, Chan ZC, Tse YK, Chim AM, Lau TK, Wong VW. Liver stiffness-based optimization of hepatocellular carcinoma risk score in patients with chronic hepatitis B. *J Hepatol* 2014; **60**: 339-345 [PMID: 24128413 DOI: 10.1016/j.jhep.2013.09.029]
- 7 Jung KS, Kim SU, Song K, Park JY, Kim DY, Ahn SH, Kim BK, Han KH. Validation of hepatitis B virus-related hepatocellular carcinoma prediction models in the era of antiviral therapy. *Hepatology* 2015; **62**: 1757-1766 [PMID: 26249025 DOI: 10.1002/hep.28115]
- 8 Jeon MY, Lee HW, Kim SU, Heo JY, Han S, Kim BK, Park JY, Kim DY, Ahn SH, Han KH. Subcirrhotic liver stiffness by FibroScan correlates with lower risk of hepatocellular carcinoma in patients with HBV-related cirrhosis. *Hepatol Int* 2017; **11**: 268-276 [PMID: 28224351 DOI: 10.1007/s12072-017-9789-y]

- 9 **Chon HY**, Lee HA, Suh SJ, Lee JI, Kim BS, Kim IH, Lee CH, Jang BK, Lee HW, Hwang JS, Lee JW, Yu JH, Seo YS, Yim HJ, Kim SU; Korean Transient Elastography Study Group. Addition of liver stiffness enhances the predictive accuracy of the PAGE-B model for hepatitis B-related hepatocellular carcinoma. *Aliment Pharmacol Ther* 2021; **53**: 919-927 [PMID: [33465253](#) DOI: [10.1111/apt.16267](#)]
- 10 **Nierhoff J**, Chávez Ortiz AA, Herrmann E, Zeuzem S, Friedrich-Rust M. The efficiency of acoustic radiation force impulse imaging for the staging of liver fibrosis: a meta-analysis. *Eur Radiol* 2013; **23**: 3040-3053 [PMID: [23801420](#) DOI: [10.1007/s00330-013-2927-6](#)]
- 11 **Gerber L**, Kasper D, Fitting D, Knop V, Vermehren A, Sprinzl K, Hansmann ML, Herrmann E, Bojunga J, Albert J, Sarrazin C, Zeuzem S, Friedrich-Rust M. Assessment of liver fibrosis with 2-D shear wave elastography in comparison to transient elastography and acoustic radiation force impulse imaging in patients with chronic liver disease. *Ultrasound Med Biol* 2015; **41**: 2350-2359 [PMID: [26116161](#) DOI: [10.1016/j.ultrasmedbio.2015.04.014](#)]
- 12 **Tai DI**, Tsay PK, Jeng WJ, Weng CC, Huang SF, Huang CH, Lin SM, Chiu CT, Chen WT, Wan YL. Differences in liver fibrosis between patients with chronic hepatitis B and C: evaluation by acoustic radiation force impulse measurements at 2 locations. *J Ultrasound Med* 2015; **34**: 813-821 [PMID: [25911714](#) DOI: [10.7863/ultra.34.5.813](#)]
- 13 **Hsu TH**, Tsui PH, Yu WT, Huang SF, Tai J, Wan YL, Tai DI. Cutoff Values of Acoustic Radiation Force Impulse Two-Location Measurements in Different Etiologies of Liver Fibrosis. *J Med Ultrasound* 2019; **27**: 130-134 [PMID: [31867175](#) DOI: [10.4103/JMU.JMU_7_19](#)]
- 14 **Vermehren J**, Polta A, Zimmermann O, Herrmann E, Poyndar T, Hofmann WP, Bojunga J, Sarrazin C, Zeuzem S, Friedrich-Rust M. Comparison of acoustic radiation force impulse imaging with transient elastography for the detection of complications in patients with cirrhosis. *Liver Int* 2012; **32**: 852-858 [PMID: [2222050](#) DOI: [10.1111/j.1478-3231.2011.02736.x](#)]
- 15 **Chu CM**, Liaw YF. Natural history of chronic hepatitis B virus infection: an immunopathological study. *J Gastroenterol Hepatol* 1997; **12**: S218-S222 [PMID: [9407340](#) DOI: [10.1111/j.1440-1746.1997.tb00503.x](#)]
- 16 **Tai DI**, Jeng WJ, Lin CY. A global perspective on hepatitis B-related single nucleotide polymorphisms and evolution during human migration. *Hepatol Commun* 2017; **1**: 1005-1013 [PMID: [29404438](#) DOI: [10.1002/hep4.1113](#)]
- 17 **Tai DI**, Chen CH, Chang TT, Chen SC, Liao LY, Kuo CH, Chen YY, Chen GH, Yang SS, Tang HS, Lin HH, Lin DY, Lo SK, Du JM, Lin KC, Changchien CS, Chang WY, Sheu JC, Liaw YF, Chen DS, Sung JL. Eight-year nationwide survival analysis in relatives of patients with hepatocellular carcinoma: role of viral infection. *J Gastroenterol Hepatol* 2002; **17**: 682-689 [PMID: [12100614](#) DOI: [10.1046/j.1440-1746.2002.02747.x](#)]
- 18 **Yang HI**, Yuen MF, Chan HL, Han KH, Chen PJ, Kim DY, Ahn SH, Chen CJ, Wong VW, Seto WK; REACH-B Working Group. Risk estimation for hepatocellular carcinoma in chronic hepatitis B (REACH-B): development and validation of a predictive score. *Lancet Oncol* 2011; **12**: 568-574 [PMID: [21497551](#) DOI: [10.1016/S1470-2045\(11\)70077-8](#)]
- 19 **Li B**, Tai DI, Yan K, Chen YC, Chen CJ, Huang SF, Hsu TH, Yu WT, Xiao J, Le L, Harrison AP. Accurate and generalizable quantitative scoring of liver steatosis from ultrasound images via scalable deep learning. *World J Gastroenterol* 2022; **28**: 2494-2508 [PMID: [35979264](#) DOI: [10.3748/wjg.v28.i22.2494](#)]
- 20 **Dietrich CF**, Bamber J, Berzigotti A, Bota S, Cantisani V, Castera L, Cosgrove D, Ferraioli G, Friedrich-Rust M, Gilja OH, Goertz RS, Karlas T, de Knecht R, de Ledinghen V, Piscaglia F, Procopet B, Saftoiu A, Sidhu PS, Sporea I, Thiele M. EFSUMB Guidelines and Recommendations on the Clinical Use of Liver Ultrasound Elastography, Update 2017 (Long Version). *Ultraschall Med* 2017; **38**: e16-e47 [PMID: [28407655](#) DOI: [10.1055/s-0043-103952](#)]
- 21 **Marasco G**, Colecchia A, Silva G, Rossini B, Eusebi LH, Ravaoli F, Dajti E, Alemanni LV, Colecchia L, Renzulli M, Golfieri R, Festi D. Non-invasive tests for the prediction of primary hepatocellular carcinoma. *World J Gastroenterol* 2020; **26**: 3326-3343 [PMID: [32655261](#) DOI: [10.3748/wjg.v26.i24.3326](#)]
- 22 **Chou CT**, Chen RC, Wu WP, Lin PY, Chen YL. Prospective Comparison of the Diagnostic Performance of Magnetic Resonance Elastography with Acoustic Radiation Force Impulse Elastography for Pre-operative Staging of Hepatic Fibrosis in Patients with Hepatocellular Carcinoma. *Ultrasound Med Biol* 2017; **43**: 2783-2790 [PMID: [28965721](#) DOI: [10.1016/j.ultrasmedbio.2017.08.1879](#)]
- 23 **Sun XL**, Yao H, Men Q, Hou KZ, Chen Z, Xu CQ, Liang LW. Combination of acoustic radiation force impulse imaging, serological indexes and contrast-enhanced ultrasound for diagnosis of liver lesions. *World J Gastroenterol* 2017; **23**: 5602-5609 [PMID: [28852319](#) DOI: [10.3748/wjg.v23.i30.5602](#)]
- 24 **Zhang Y**, Chen H, Chen S, Li W. Prognostic value of liver stiffness measurement in patients with hepatocellular carcinoma (HCC) treated by radiofrequency ablation: a meta-analysis. *Int J Hyperthermia* 2021; **38**: 1052-1059 [PMID: [34251953](#) DOI: [10.1080/02656736.2021.1947529](#)]
- 25 **Aoki T**, Iijima H, Tada T, Kumada T, Nishimura T, Nakano C, Kishino K, Shimono Y, Yoh K, Takata R, Ishii A, Takashima T, Sakai Y, Aizawa N, Nishikawa H, Ikeda N, Iwata Y, Enomoto H, Hirota S, Fujimoto J, Nishiguchi S. Prediction of development of hepatocellular carcinoma using a new scoring system involving virtual touch quantification in patients with chronic liver diseases. *J Gastroenterol* 2017; **52**: 104-112 [PMID: [27306373](#) DOI: [10.1007/s00535-016-1228-7](#)]
- 26 **Chen CL**, Yang HI, Yang WS, Liu CJ, Chen PJ, You SL, Wang LY, Sun CA, Lu SN, Chen DS, Chen CJ. Metabolic factors and risk of hepatocellular carcinoma by chronic hepatitis B/C infection: a follow-up study in Taiwan. *Gastroenterology* 2008; **135**: 111-121 [PMID: [18505690](#) DOI: [10.1053/j.gastro.2008.03.073](#)]
- 27 **Mantovani A**, Petracca G, Beatrice G, Csermely A, Tilg H, Byrne CD, Targher G. Non-alcoholic fatty liver disease and increased risk of incident extrahepatic cancers: a meta-analysis of observational cohort studies. *Gut* 2022; **71**: 778-788 [PMID: [33685968](#) DOI: [10.1136/gutjnl-2021-324191](#)]
- 28 **Jan CF**, Chen CJ, Chiu YH, Chen LS, Wu HM, Huang CC, Yen MF, Chen TH. A population-based study investigating the association between metabolic syndrome and hepatitis B/C infection (Keelung Community-based Integrated Screening study No. 10). *Int J Obes (Lond)* 2006; **30**: 794-799 [PMID: [16404404](#) DOI: [10.1038/sj.ijo.0803204](#)]
- 29 **Kuo CS**, Chen YT, Hsu CY, Chang CC, Chou RH, Li SY, Kuo SC, Huang PH, Chen JW, Lin SJ. The impact of chronic hepatitis B infection on major adverse cardiovascular events and all-cause mortality in patients with diabetes: a nationwide population-based study from Taiwan. *BMJ Open* 2017; **7**: e016179 [PMID: [28827251](#) DOI: [10.1136/bmjopen-2017-016179](#)]

- 10.1136/bmjopen-2017-016179]
- 30 **Sung J**, Song YM, Choi YH, Ebrahim S, Davey Smith G. Hepatitis B virus seropositivity and the risk of stroke and myocardial infarction. *Stroke* 2007; **38**: 1436-1441 [PMID: 17379829 DOI: 10.1161/STROKEAHA.106.466268]
- 31 **Wang CC**, Cheng PN, Kao JH. Systematic review: chronic viral hepatitis and metabolic derangement. *Aliment Pharmacol Ther* 2020; **51**: 216-230 [PMID: 31746482 DOI: 10.1111/apt.15575]
- 32 **Luan J**, Ju D. Inflammasome: A Double-Edged Sword in Liver Diseases. *Front Immunol* 2018; **9**: 2201 [PMID: 30319645 DOI: 10.3389/fimmu.2018.02201]
- 33 **Chu CM**, Karayiannis P, Fowler MJ, Monjardino J, Liaw YF, Thomas HC. Natural history of chronic hepatitis B virus infection in Taiwan: studies of hepatitis B virus DNA in serum. *Hepatology* 1985; **5**: 431-434 [PMID: 3997072 DOI: 10.1002/hep.1840050315]
- 34 **Chang ML**, Liaw YF. Hepatitis B flares in chronic hepatitis B: pathogenesis, natural course, and management. *J Hepatol* 2014; **61**: 1407-1417 [PMID: 25178562 DOI: 10.1016/j.jhep.2014.08.033]
- 35 **Chang SW**, Fann CS, Su WH, Wang YC, Weng CC, Yu CJ, Hsu CL, Hsieh AR, Chien RN, Chu CM, Tai DI. A genome-wide association study on chronic HBV infection and its clinical progression in male Han-Taiwanese. *PLoS One* 2014; **9**: e99724 [PMID: 24940741 DOI: 10.1371/journal.pone.0099724]
- 36 **Hsieh AR**, Fann CSJ, Lin HC, Tai J, Hsieh SY, Tai DI. Hepatitis B virus persistent infection-related single nucleotide polymorphisms in HLA regions are associated with viral load in hepatoma families. *World J Gastroenterol* 2021; **27**: 6262-6276 [PMID: 34712031 DOI: 10.3748/wjg.v27.i37.6262]
- 37 **Cabibbo G**, Reig M, Celsa C, Torres F, Battaglia S, Enea M, Rizzo GEM, Petta S, Calvaruso V, Di Marco V, Craxi A, Singal AG, Bruix J, Cammà C. First-Line Immune Checkpoint Inhibitor-Based Sequential Therapies for Advanced Hepatocellular Carcinoma: Rationale for Future Trials. *Liver Cancer* 2022; **11**: 75-84 [PMID: 35222509 DOI: 10.1159/000520278]
- 38 **Rizzo A**, Ricci AD, Di Federico A, Frega G, Palloni A, Tavolari S, Brandi G. Predictive Biomarkers for Checkpoint Inhibitor-Based Immunotherapy in Hepatocellular Carcinoma: Where Do We Stand? *Front Oncol* 2021; **11**: 803133 [PMID: 34976841 DOI: 10.3389/fonc.2021.803133]



Published by **Baishideng Publishing Group Inc**
7041 Koll Center Parkway, Suite 160, Pleasanton, CA 94566, USA

Telephone: +1-925-3991568

E-mail: bpgoffice@wjgnet.com

Help Desk: <https://www.f6publishing.com/helpdesk>

<https://www.wjgnet.com>

