

World Journal of *Gastrointestinal Surgery*

World J Gastrointest Surg 2023 June 27; 15(6): 1007-1261



Contents

Monthly Volume 15 Number 6 June 27, 2023

OPINION REVIEW

- 1007 Diverticulitis is a population health problem: Lessons and gaps in strategies to implement and improve contemporary care
Stovall SL, Kaplan JA, Law JK, Flum DR, Simianu VV

REVIEW

- 1020 Distal pancreatectomy with or without radical approach, vascular resections and splenectomy: Easier does not always mean easy
Bencini L, Minuzzo A

MINIREVIEWS

- 1033 Endoscopic ultrasound-guided portal pressure gradient measurement in managing portal hypertension
Lesmana CRA
- 1040 Robotic surgery in elderly patients with colorectal cancer: Review of the current literature
Teo NZ, Ngu JCY
- 1048 Median arcuate ligament syndrome often poses a diagnostic challenge: A literature review with a scope of our own experience
Giakoustidis A, Moschonas S, Christodoulidis G, Chourmouzi D, Diamantidou A, Masoura S, Louri E, Papadopoulos VN, Giakoustidis D
- 1056 Surgical complications of oncological treatments: A narrative review
Fico V, Altieri G, Di Grezia M, Bianchi V, Chiarello MM, Pepe G, Tropeano G, Brisinda G

ORIGINAL ARTICLE

Basic Study

- 1068 Impact of interstitial cells of Cajal on slow wave and gallbladder contractility in a guinea pig model of acute cholecystitis
Ding F, Guo R, Chen F, Liu LP, Cui ZY, Wang YX, Zhao G, Hu H

Retrospective Cohort Study

- 1080 Fascia- vs vessel-oriented lateral lymph node dissection for rectal cancer: Short-term outcomes and prognosis in a single-center experience
Zhao W, Wang ZJ, Mei SW, Chen JN, Zhou SC, Zhao FQ, Xiao TX, Huang F, Liu Q
- 1093 Prognostic value of 11-factor modified frailty index in postoperative adverse outcomes of elderly gastric cancer patients in China
Xu ZY, Hao XY, Wu D, Song QY, Wang XX

Retrospective Study

- 1104** Long-term outcomes and failure patterns after laparoscopic intersphincteric resection in ultralow rectal cancers
Qiu WL, Wang XL, Liu JG, Hu G, Mei SW, Tang JQ
- 1116** Predictors for success of non-operative management of adhesive small bowel obstruction
Ng ZQ, Hsu V, Tee WWH, Tan JH, Wijesuriya R
- 1125** Preoperative albumin-bilirubin score is a prognostic factor for gastric cancer patients after curative gastrectomy
Szor DJ, Pereira MA, Ramos MFKP, Tustumi F, Dias AR, Zilberstein B, Ribeiro Jr U
- 1138** Ability of lactulose breath test results to accurately identify colorectal polyps through the measurement of small intestine bacterial overgrowth
Li L, Zhang XY, Yu JS, Zhou HM, Qin Y, Xie WR, Ding WJ, He XX
- 1149** Treatment outcome analysis of bevacizumab combined with cyclophosphamide and oxaliplatin in advanced pseudomyxoma peritonei
Zhang Y, Zhao X, Gao C, Lin LY, Li Y
- 1159** Surgical management of duodenal Crohn's disease
Yang LC, Wu GT, Wu Q, Peng LX, Zhang YW, Yao BJ, Liu GL, Yuan LW
- 1169** Influences of dexmedetomidine on stress responses and postoperative cognitive and coagulation functions in patients undergoing radical gastrectomy under general anesthesia
Ma XF, Lv SJ, Wei SQ, Mao BR, Zhao XX, Jiang XQ, Zeng F, Du XK
- 1178** Dissimilar survival and clinicopathological characteristics of mucinous adenocarcinoma located in pancreatic head and body/tail
Li Z, Zhang XJ, Sun CY, Li ZF, Fei H, Zhao DB

SYSTEMATIC REVIEWS

- 1191** Gallbladder perforation with fistulous communication
Quiroga-Garza A, Alvarez-Villalobos NA, Muñoz-Leija MA, Garcia-Campa M, Angeles-Mar HJ, Jacobo-Baca G, Elizondo-Omana RE, Guzman-Lopez S

META-ANALYSIS

- 1202** Efficacy of transanal drainage tube in preventing anastomotic leakage after surgery for rectal cancer: A meta-analysis
Fujino S, Yasui M, Ohue M, Miyoshi N

CASE REPORT

- 1211** Percutaneous transhepatic cholangial drainage-guided methylene blue for fistulotomy using dual-knife for bile duct intubation: A case report
Tang BX, Li XL, Wei N, Tao T

- 1216** Optimal resection of gastric bronchogenic cysts based on anatomical continuity with adherent gastric muscular layer: A case report
Terayama M, Kumagai K, Kawachi H, Makuuchi R, Hayami M, Ida S, Ohashi M, Sano T, Nunobe S
- 1224** Intrahepatic cholangiocarcinoma in patients with primary sclerosing cholangitis and ulcerative colitis: Two case reports
Miyazu T, Ishida N, Asai Y, Tamura S, Tani S, Yamade M, Iwaizumi M, Hamaya Y, Osawa S, Baba S, Sugimoto K
- 1232** Massive bleeding from a gastric artery pseudoaneurysm in hepatocellular carcinoma treated with atezolizumab plus bevacizumab: A case report
Pang FW, Chen B, Peng DT, He J, Zhao WC, Chen TT, Xie ZG, Deng HH
- 1240** Bedside ultrasound-guided water injection assists endoscopically treatment in esophageal perforation caused by foreign bodies: A case report
Wei HX, Lv SY, Xia B, Zhang K, Pan CK
- 1247** Modified stomach-partitioning gastrojejunostomy for initially unresectable advanced gastric cancer with outlet obstruction: A case report
Shao XX, Xu Q, Wang BZ, Tian YT
- 1256** Small bowel diverticulum with enterolith causing intestinal obstruction: A case report
Wang LW, Chen P, Liu J, Jiang ZW, Liu XX

ABOUT COVER

Editorial Board Member of *World Journal of Gastrointestinal Surgery*, Danko Mikulic, FEBS, MD, PhD, Assistant Professor, Surgeon, Department of Surgery, University Hospital Merkur, Zagreb 10000, Croatia.
danko.mikulic@zg.t-com.hr

AIMS AND SCOPE

The primary aim of *World Journal of Gastrointestinal Surgery* (WJGS, *World J Gastrointest Surg*) is to provide scholars and readers from various fields of gastrointestinal surgery with a platform to publish high-quality basic and clinical research articles and communicate their research findings online.

WJGS mainly publishes articles reporting research results and findings obtained in the field of gastrointestinal surgery and covering a wide range of topics including biliary tract surgical procedures, biliopancreatic diversion, colectomy, esophagectomy, esophagostomy, pancreas transplantation, and pancreatectomy, etc.

INDEXING/ABSTRACTING

The WJGS is now abstracted and indexed in Science Citation Index Expanded (SCIE, also known as SciSearch®), Current Contents/Clinical Medicine, Journal Citation Reports/Science Edition, PubMed, PubMed Central, Reference Citation Analysis, China National Knowledge Infrastructure, China Science and Technology Journal Database, and Superstar Journals Database. The 2022 Edition of Journal Citation Reports® cites the 2021 impact factor (IF) for WJGS as 2.505; IF without journal self cites: 2.473; 5-year IF: 3.099; Journal Citation Indicator: 0.49; Ranking: 104 among 211 journals in surgery; Quartile category: Q2; Ranking: 81 among 93 journals in gastroenterology and hepatology; and Quartile category: Q4.

RESPONSIBLE EDITORS FOR THIS ISSUE

Production Editor: Rui-Rui Wu, Production Department Director: Xiang Li, Editorial Office Director: Jia-Ru Fan.

NAME OF JOURNAL

World Journal of Gastrointestinal Surgery

ISSN

ISSN 1948-9366 (online)

LAUNCH DATE

November 30, 2009

FREQUENCY

Monthly

EDITORS-IN-CHIEF

Peter Schemmer

EDITORIAL BOARD MEMBERS

<https://www.wjgnet.com/1948-9366/editorialboard.htm>

PUBLICATION DATE

June 27, 2023

COPYRIGHT

© 2023 Baishideng Publishing Group Inc

INSTRUCTIONS TO AUTHORS

<https://www.wjgnet.com/bpg/gerinfo/204>

GUIDELINES FOR ETHICS DOCUMENTS

<https://www.wjgnet.com/bpg/GerInfo/287>

GUIDELINES FOR NON-NATIVE SPEAKERS OF ENGLISH

<https://www.wjgnet.com/bpg/gerinfo/240>

PUBLICATION ETHICS

<https://www.wjgnet.com/bpg/GerInfo/288>

PUBLICATION MISCONDUCT

<https://www.wjgnet.com/bpg/gerinfo/208>

ARTICLE PROCESSING CHARGE

<https://www.wjgnet.com/bpg/gerinfo/242>

STEPS FOR SUBMITTING MANUSCRIPTS

<https://www.wjgnet.com/bpg/GerInfo/239>

ONLINE SUBMISSION

<https://www.f6publishing.com>



Retrospective Study

Preoperative albumin-bilirubin score is a prognostic factor for gastric cancer patients after curative gastrectomy

Daniel Jose Szor, Marina Alessandra Pereira, Marcus Fernando Kodama Pertille Ramos, Francisco Tustumi, Andre Roncon Dias, Bruno Zilberstein, Ulysses Ribeiro Jr

Specialty type: Gastroenterology and hepatology

Provenance and peer review: Invited article; Externally peer reviewed.

Peer-review model: Single blind

Peer-review report's scientific quality classification

Grade A (Excellent): 0
Grade B (Very good): B
Grade C (Good): C
Grade D (Fair): 0
Grade E (Poor): 0

P-Reviewer: Cesaretti M, Italy; Imai Y, Japan

Received: January 10, 2023

Peer-review started: January 10, 2023

First decision: February 20, 2023

Revised: February 21, 2023

Accepted: April 17, 2023

Article in press: April 17, 2023

Published online: June 27, 2023



Daniel Jose Szor, Marina Alessandra Pereira, Marcus Fernando Kodama Pertille Ramos, Francisco Tustumi, Andre Roncon Dias, Bruno Zilberstein, Ulysses Ribeiro Jr, Department of Gastroenterology, Instituto do Cancer, Hospital das Clinicas HCFMUSP, Faculdade de Medicina, Universidade de Sao Paulo, Sao Paulo 01246000, Brazil

Corresponding author: Daniel Jose Szor, MS, PhD, Postdoc, Professor, Surgeon, Surgical Oncologist, Department of Gastroenterology, Instituto do Cancer, Hospital das Clinicas HCFMUSP, Faculdade de Medicina, Universidade de Sao Paulo, 251 Av Dr Arnaldo, Sao Paulo 01246000, Brazil. danszor@gmail.com

Abstract

BACKGROUND

Albumin-bilirubin (ALBI) score is an indicator of liver dysfunction and is useful for predicting prognosis of hepatocellular carcinomas. Currently, this liver function index has been used to predict prognosis in other neoplasms. However, the significance of ALBI score in gastric cancer (GC) after radical resection has not been elucidated.

AIM

To evaluate the prognostic value of the preoperative ALBI status in patients with GC who received curative treatment.

METHODS

Patients with GC who underwent curative intended gastrectomy were retrospectively evaluated from our prospective database. ALBI score was calculated as follows: $(\log_{10} \text{bilirubin} \times 0.660) + (\text{albumin} \times -0.085)$. The receiver operating characteristic curve with area under the curve (AUC) was plotted to evaluate the ability of ALBI score in predicting recurrence or death. The optimal cutoff value was determined by maximizing Youden's index, and patients were divided into low and high-ALBI groups. The Kaplan-Meier curve was used to analyze the survival, and the log-rank test was used for comparison between groups.

RESULTS

A total of 361 patients (235 males) were enrolled. The median ALBI value for the entire cohort was -2.89 (IQR -3.13; -2.59). The AUC for ALBI score was 0.617 (95%CI: 0.556-0.673, $P < 0.001$), and the cutoff value was -2.82. Accordingly, 211

(58.4%) patients were classified as low-ALBI group and 150 (41.6%) as high-ALBI group. Older age ($P = 0.005$), lower hemoglobin level ($P < 0.001$), American Society of Anesthesiologists classification III/IV ($P = 0.001$), and D1 lymphadenectomy ($P = 0.003$) were more frequent in the high-ALBI group. There was no difference between both groups in terms of Lauren histological type, depth of tumor invasion (pT), presence of lymph node metastasis (pN), and pathologic (pTNM) stage. Major postoperative complication, and mortality at 30 and 90 days were higher in the high-ALBI patients. In the survival analysis, the high-ALBI group had worse disease-free survival (DFS) and overall survival (OS) compared to those with low-ALBI ($P < 0.001$). When stratified by pTNM, the difference between ALBI groups was maintained in stage I/II and stage III CG for DFS ($P < 0.001$ and $P = 0.021$, respectively); and for OS ($P < 0.001$ and $P = 0.063$, respectively). In multivariate analysis, total gastrectomy, advanced pT stage, presence of lymph node metastasis and high-ALBI were independent factors associated with worse survival.

CONCLUSION

The preoperative ALBI score is able to predict the outcomes of patients with GC, where high-ALBI patients have worse prognosis. Also, ALBI score allows risk stratification of patients within the same pTNM stages, and represents an independent risk factor associated with survival.

Key Words: Stomach neoplasms; Adenocarcinoma; Albumin-bilirubin; Biomarker; Prognosis; Survival

©The Author(s) 2023. Published by Baishideng Publishing Group Inc. All rights reserved.

Core Tip: The present study evaluates the clinical impact of the preoperative albumin-bilirubin (ALBI) score in patients with gastric cancer who received curative treatment. We found that ALBI score is able to predict short-term and long-term outcomes of patients, and can be applied as a prognostic factor for gastric cancer. The ALBI is a simple and reproducible parameter that allows the risk stratification of patients within the pathologic stage stages, and may be an additional useful tool for decision-making regarding treatment and follow-up individualization.

Citation: Szor DJ, Pereira MA, Ramos MFKP, Tustumi F, Dias AR, Zilberstein B, Ribeiro Jr U. Preoperative albumin-bilirubin score is a prognostic factor for gastric cancer patients after curative gastrectomy. *World J Gastrointest Surg* 2023; 15(6): 1125-1137

URL: <https://www.wjgnet.com/1948-9366/full/v15/i6/1125.htm>

DOI: <https://dx.doi.org/10.4240/wjgs.v15.i6.1125>

INTRODUCTION

Gastric cancer (GC) is a solid gastrointestinal tumor with elevated incidence and mortality, represented by more than 1 million diagnosed cases and 768000 deaths reported worldwide in 2020[1]. Currently, staging is based only on TNM classification, which plays a crucial role in predicting the prognosis. However, it is well known that patients with same stage disease can have different outcomes[2], which indicate that additional parameters can play a role in staging and prognosis.

Thus, the search for alternative parameters that, integrated into staging systems, can provide further information about the prognosis are a constant target of investigation. Due to its potential to allow risk stratification and tailor individual treatment and follow-up, some of the research on additional prognostic variables has focused on inflammatory and nutritional-based biomarkers, based on the fact that tumor development is a complex process dictated by a series of intercellular and its sub product interactions[3]. Over the past years, many articles have been published demonstrating the correlation of inflammatory biomarkers, such as neutrophil-lymphocyte and platelet lymphocyte ratio, with prognosis of patients with GC[4]. The main advantages of these methods are the low cost, the need for simple tests such as a complete blood count, and the reproducibility between different centers.

It is also known that nutritional characteristics and liver function, represented by serum albumin and bilirubin, can interfere with prognosis and cancer survival. The decreased albumin level, which is produced in the liver, could be a sign of malnutrition or liver synthesis dysfunction. In turn, increased serum bilirubin levels usually suggests liver dysfunction[5]. Therefore, the albumin-bilirubin score (ALBI) was created to evaluate both levels together and estimate the extent of liver dysfunction[6,7]. It was first described by Johnson *et al*[6], where were evaluated patients with hepatocarcinoma (HCC) in a way to overcome the limitation of Child-Pugh grade on assessing hepatic function[7]. ALBI was initially developed to assess HCC, and represents a prognostic factor in these patients, irrespective of the degree

of underlying liver fibrosis[8].

However, it has also been extensively investigated in patients who do not have HCC, and some studies demonstrated that ALBI score represents a prognostic factor even in patients without HCC, including patients with non-small cell lung carcinoma, pancreatic, colon, and esophageal cancer[9-12].

Despite the interest in ALBI score, few studies have considered its role in patients with GC. Kanda *et al*[13] were the first to recognize ALBI grade as a predictor of survival after radical gastrectomy. Furthermore, ALBI was also identified as a predictor of postoperative complications (POC) after gastrectomy for GC[14]. However, the clinical impact of the preoperative ALBI score in patients with GC who received curative treatment remains unclear.

Thus, the aim of this study was to investigate the prognostic value of the ALBI score in patients with GC, and its clinical applicability for risk stratification. We also evaluated the clinicopathological characteristics associated with ALBI score groups.

MATERIALS AND METHODS

Patients and study design

This is a retrospective cohort. All GC treated with curative intent gastrectomy at our Hospital between 2009 and 2021 were evaluated from a prospectively maintained database. Only histologically proven gastric adenocarcinoma and patients who underwent gastrectomy with lymphadenectomy were considered eligible. Emergency gastrectomy or patients who had underlying chronic liver disease were excluded. The study was approved by the ethics committee of the hospital.

Preoperative evaluation and ALBI score

Preoperative staging consisted of upper gastrointestinal endoscopy with biopsy, chest, abdominal and pelvic computed tomography scans, and laboratory tests. The clinical characteristics evaluated included the American Society of Anesthesiologists (ASA) classification and the Charlson-Deyo Comorbidity Index (CCI)[15]. CCI was considered without including age and GC as comorbidity. The neutrophil-lymphocyte ratio was evaluated by the division between serum neutrophil and lymphocytes.

Peripheral blood was obtained after diagnosis and within 1 mo before surgery, at the time the patient had no sign of infection and was not under systemic chemotherapy. The ALBI score was calculated by the formula $(\log_{10} \text{bilirubin} \times 0.660) + (\text{albumin} \times -0.085)$, where bilirubin was expressed in $\mu\text{mol/L}$ and albumin in g/L .

Surgery and postoperative

The extent of gastrectomy and lymph node dissection were performed in accordance with Japanese Gastric Cancer Association recommendations[16]. Tumor stage was determined based on the TNM/UICC (8th edition)[17]. Clavien-Dindo's classification was applied to grade POC, when Clavien III-IV was considered as major POC[18].

Follow-up was performed every 3 mo in the first year and every 6 mo after this period, with clinical evaluation. Studies to detect relapse were performed based on the presence of symptoms.

Statistical analysis

Descriptive statistics included frequencies with percent for nominal variables, and mean (with standard deviation, SD) or median (with interquartile range, IQR) for continuous variables. Comparison of clinicopathological characteristics was performed using chi-square tests for categorical variables and *t* test or Mann-Whitney *U* test for continuous variables. The receiver operating characteristic (ROC) curves with area under the ROC curve (AUC) were used to evaluate the ability of ALBI in predicting disease-free survival (DFS) (recurrence/death). The optimal cutoff value was determined by maximizing Youden's index (sensitivity + specificity - 1). Patients were divided into "low-ALBI" and "High-ALBI" groups based on the cutoff value.

Overall survival (OS) and DFS were estimated using the Kaplan-Meier method, and the comparison of curves was obtained through the log-rank test. Multivariate Cox proportional hazard analysis was performed to determine independent risk factors for survival. Only variables that were significant on univariate analysis ($P < 0.05$) were included as co-variable in the multivariate model. Survival time was calculated from the date of diagnosis until the date of death or recurrence for DFS, and until death for OS. The patients alive were censored at the date of the last contact. A *P* value of < 0.05 was considered statistically significant. Statistical analyses were performed using SPSS software, version 20.0 (SPSS Inc, Chicago, IL, United States).

RESULTS

A total of 565 GC patients underwent curative intent gastrectomy in the referenced period. After

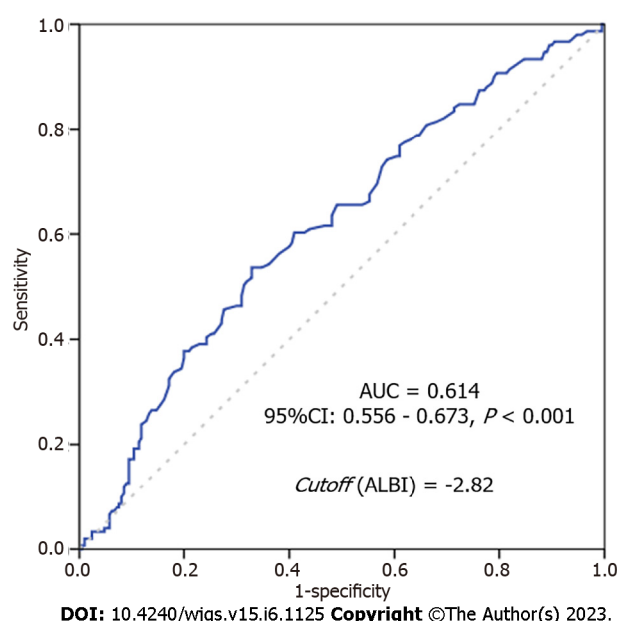


Figure 1 Receiver operating characteristic for the diagnostic accuracy of albumin-bilirubin score, and the optimal cutoff value. The area under the receiver operating characteristic curve was 0.614. 95%CI: 95% confidence interval; AUC: Area under the curve; ALBI: Albumin-bilirubin.

excluding those with a lack of laboratory tests within one month before surgery, 361 patients met the inclusion criteria and were enrolled in the study. The mean age was 63.5 years-old (± 12.1), and the majority of patients were male (65%).

The mean value of albumin and bilirubin of all cases was 3.9 g/L (SD: 0.6; median of 4, IQR: 3.70-4.30) and 0.43 $\mu\text{mol/L}$ (SD: 0.27; median of 0.37, IQR: 0.26-0.55), respectively. After ALBI calculation, the median ALBI value obtained was -2.89 (IQR: -3.13; -2.59; median of -2.82, SD: -0.48).

The ROC curve with the ALBI metric performance is shown in [Figure 1](#). The AUC for ALBI score was 0.617 (95%CI: 0.556-0.673, $P < 0.00171$), and the optimal cutoff value was -2.82.

Thus, based on the cutoff value determined by ROC curve, 211 (58.4%) patients were classified as low-ALBI group (ALBI < -2.82); and 150 (41.6%) as high-ALBI group (ALBI ≥ -2.82).

Clinical and surgical characteristics of both groups are presented in [Table 1](#). Older age ($P = 0.005$), lower hemoglobin level ($P < 0.001$), and ASA III/IV ($P = 0.001$) were associated with the High-ALBI group. Also, D1 Lymphadenectomy was more frequent in the High-ALBI group ($P = 0.003$). There was no difference regarding sex, BMI, type of gastrectomy, and preoperative chemotherapy between the groups.

Regarding the pathological characteristics ([Table 2](#)), there was no significant difference between the ALBI groups in terms of histological type, depth of tumor invasion (pT), presence of lymph node metastasis (pN), and final pathologic (pTNM) stage.

The postoperative outcomes according to ALBI group are presented in [Table 3](#). The occurrence of major POC ($P = 0.029$) and the mortality rate at 30 d and 90 d were more frequent in the high-ALBI group ($P = 0.023$ and $P = 0.030$, respectively). The frequency of patients undergoing adjuvant chemotherapy was similar between both groups ($P = 0.917$).

Survival analysis

The median follow-up period was 40.1 mo. During this period, 81 patients had recurrence and 142 died. The 5-years DFS and OS rates for the entire cohort were 53.7% and 55.6%, respectively. In the survival analysis ([Figure 2](#)), DFS and OS rate was worse for patients with high-ALBI levels compared to the low-ALBI patients ($P < 0.001$ for both). The median DFS and OS for high-ALBI group were of 28.0 mo and 39.5 mo, respectively.

Similarly, when stratified by pTNM stage ([Figure 3](#)), pTNM I/II GC with high-ALBI had significantly worse DFS and OS compared to with low-ALBI pTNM I/II patients ($P < 0.001$).

Also, among pTNM III GC, DFS and OS in high-ALBI was shorter compared to low-ALBI group ($P = 0.021$ and $P = 0.063$, respectively).

In multivariate analysis, total gastrectomy, advanced pT stage, presence of lymph node metastasis and high-ALBI were independent factors associated with worse DFS ([Table 4](#)). For OS, ASA, type of gastrectomy, pT, pN, and ALBI-groups were factors significantly associated with survival in multivariate model ([Table 5](#)).

Table 1 Clinical and surgical characteristics of patients with gastric cancer according albumin-bilirubin risk groups, *n* (%)

Variables	Low-ALBI group (< -2.82), <i>n</i> = 211	High-ALBI group (\geq -2.82), <i>n</i> = 150	<i>P</i> value
Sex			0.712
Female	72 (34.1)	54 (36.0)	
Male	139 (65.9)	96 (64.0)	
Age (yr)			0.005
mean (SD)	62.0 (12.0)	65.6 (12.2)	
BMI (kg/cm ²)			0.856
mean (SD)	25 (4.5)	25.2 (16.5)	
Hemoglobin (g/dL)			< 0.001
mean (SD)	12.7 (2.1)	11.1 (2.1)	
Albumin (g/dL)			< 0.001
mean (SD)	4.3 (0.3)	3.5 (0.5)	
Bilirubin (mg/dL)			0.072
mean (SD)	0.41 (0.22)	0.47 (0.33)	
Neutrophil to lymphocyte ratio			0.092
mean (SD)	2.48 (2.29)	2.91 (2.56)	
American Society of Anesthesiologists			0.001
I/II	178 (84.4)	105 (70.0)	
III/IV	33 (15.6)	45 (30.0)	
Charlson–Deyo Comorbidity Index ¹			0.344
0	141 (66.8)	93 (62.0)	
≥ 1	70 (33.2)	57 (38.0)	
Type of gastrectomy			0.562
Subtotal	126 (59.7)	85 (56.7)	
Total	85 (40.3)	65 (43.3)	
Lymphadenectomy			0.003
D1	34 (16.1)	44 (29.3)	
D2	177 (83.9)	106 (70.7)	
Preoperative chemotherapy			0.477
No	175 (82.9)	120 (80)	
Yes	36 (17.1)	30 (20)	

¹Considered without including age and cancer as comorbidity.*P* values in bold are statistically significant. BMI: Body mass index; ALBI: Albumin-bilirubin.

DISCUSSION

The aim of the present study was to evaluate the impact of the ALBI status in GC patients who received curative treatment. Accordingly, we found that ALBI score was an independent prognostic factor for patients with GC, and may be useful in predicting patient survival after gastrectomy. Furthermore, ALBI groups were able to stratify survival of patients in the same pTNM stage.

ALBI score has been considered a useful marker for hepatic dysfunction based only the two variables, albumin and bilirubin, which are related to nutrition and liver function[6,19]. Classically, it is a biomarker intended to evaluate prognosis in patients with HCC, and the majority of available studies address this disease[20]. Even so, some articles report results of its application in other diseases[9,10,21]. For instance, Matsukane *et al*[22] reports that ALBI is an independent prognostic factor for patients with non-small cell lung cancer, and Lee *et al*[9] found that ALBI can predicted disease recurrence and

Table 2 Pathological characteristics of patients with gastric cancer according albumin-bilirubin groups, *n* (%)

Variables	Low-ALBI group (< -2.82), <i>n</i> = 211	High-ALBI group (≥ -2.82), <i>n</i> = 150	<i>P</i> value
Lauren type			0.367
Intestinal	124 (58.8)	81 (54.0)	
Diffuse/mixed	87 (41.2)	69 (46.0)	
Histological differentiation			0.993
Well/moderately differentiated	107 (59.7)	76 (50.7)	
Poorly differentiated	104 (49.3)	74 (49.3)	
Lymphatic invasion			0.132
No	121 (57.3)	74 (49.3)	
Yes	90 (42.7)	76 (50.7)	
Venous invasion			0.196
No	150 (71.1)	97 (64.7)	
Yes	61 (28.9)	53 (35.3)	
Perineural invasion			0.743
No	112 (53.1)	77 (51.3)	
Yes	99 (46.9)	73 (48.7)	
T status			0.105
pT1/T2	91 (43.1)	52 (34.7)	
pT3/T4	120 (56.9)	98 (65.3)	
No of dissected lymph nodes			0.543
mean (SD)	40.9 (17.7)	39.8 (17.2)	
pN status			0.239
pN0	99 (46.9)	61 (40.7)	
pN+	112 (53.1)	89 (59.3)	
pTNM			0.222
I/II	122 (57.8)	77 (51.3)	
III	89 (42.2)	73 (48.7)	

ALBI: Albumin-bilirubin; pN: Presence of lymph node metastasis; pTNM: Pathologic.

survival in stage III colon cancer.

Considering the two parameters that comprise the ALBI score, albumin is synthesized in the liver, and its serum level is usually used to assess nutritional status and hepatic function[5]. Nutritional status is something that has already been shown to be related to the immune system and prognosis in GC, where a deficient nutritional condition can suppress the immune response against tumor, accelerating the cancer progression[5,23]. Thus, preoperative serum albumin level and prognostic nutritional index are factors already related to outcomes in GC[23]. But considering the evaluation of bilirubin levels alone, the association between serum levels of bilirubin and GC are poorly described[24].

The present study evaluated the ALBI through the ROC curve based on the DFS for GC, and we set the cut-off value for the ALBI score at -2.82. Our cutoff score was similar to reported by Ju *et al*[21], that include only curative GC patients, where based on OS rates at 3 years and 5 years they determined an ALBI cutoff value of -2.78. Interestingly, a similar value was also found in a study with patients with esophageal cancer, where the cutoff value for the ALBI score was -2.7[10]. This suggests that setting a single cut-off value for esophagogastric tumors may be appropriate.

In our cohort, ALBI groups were different in terms of some clinical characteristics, as age, hemoglobin levels and ASA, indicating a clinically impaired patient who might present a worse prognosis. However, no difference regarding the rate of comorbidity in relation to the ALBI groups were found in this study. Likewise, Kanda *et al*[13] evaluated 283 patients with pT2-4 resected GC and also demonstrated that high-ALBI group patients were older, but without reflecting on the comorbidity rate.

Table 3 Postoperative and surgical outcomes of patients with gastric cancer according albumin-bilirubin groups, *n* (%)

Variables	Low-ALBI group (< -2.82), <i>n</i> = 211	High-ALBI group (\geq -2.82), <i>n</i> = 150	<i>P</i> value
Length of hospital stay (d)			0.673
Median (IQR)	9 (6.0-13.3)	10 (7.0-13.8)	
Postoperative complications (Clavien)			0.029
Non/minor POC (I-II)	183 (86.7)	117 (78)	
Major POC (III-IV)	28 (13.3)	33 (22)	
Postoperative chemotherapy			0.917
No	117 (55.5)	84 (56)	
Yes	94 (44.5)	66 (44)	
Chemotherapy-all (pre or postoperative)			0.766
No	99 (46.9)	68 (45.3)	
Yes	112 (53.1)	82 (54.7)	
30-d mortality			0.023
No	206 (97.6)	138 (92.6)	
Yes	5 (2.4)	11 (7.4)	
90-d mortality			0.030
No	198 (94.7)	130 (88.4)	
Yes	11 (5.3)	17 (11.6)	

P values in bold are statistically significant. IQR: Interquartile range; ALBI: Albumin-bilirubin; POC: Postoperative complications.

Table 4 Univariate and multivariate analysis for disease-free survival

Disease-free survival	Univariate			Multivariate		
Variables	HR	95%CI	<i>P</i> value	HR	95%CI	<i>P</i> value
Male (<i>vs</i> female)	1.15	0.81-1.61	0.438	-	-	-
Age > 65 yr (<i>vs</i> < 65 yr)	1.18	0.86-1.62	0.312	-	-	-
Charlson > 1 (<i>vs</i> 0)	1.48	1.07-2.04	0.019	1.39	0.94-2.06	0.102
ASA III/IV (<i>vs</i> ASA I/II)	1.84	1.29-2.64	0.001	1.43	0.93-2.21	0.106
Total gastrectomy (<i>vs</i> distal)	1.43	1.04-1.97	0.030	1.43	1.03-1.98	0.031
Diffuse/mixed (<i>vs</i> others)	1.21	0.87-1.67	0.255	-	-	-
pT3/T4 (<i>vs</i> pT1/T2)	2.57	1.76-3.76	< 0.001	2.03	1.33-3.12	0.001
pN+ (<i>vs</i> pN0)	2.26	1.60-3.19	< 0.001	1.54	1.04-2.27	0.030
non-CMT (<i>vs</i> CMT)	1.15	0.83-1.58	0.399	-	-	-
Low-ALBI (<i>vs</i> High-ALBI)	2.09	1.51-2.88	< 0.001	1.83	1.32-2.53	< 0.001

P values in bold are statistically significant. 95%CI: 95% confidence interval; HR: Hazard ratio; ASA: American Society of Anesthesiologists; ALBI: Albumin-bilirubin; pN: Presence of lymph node metastasis; CMT: Chemotherapy.

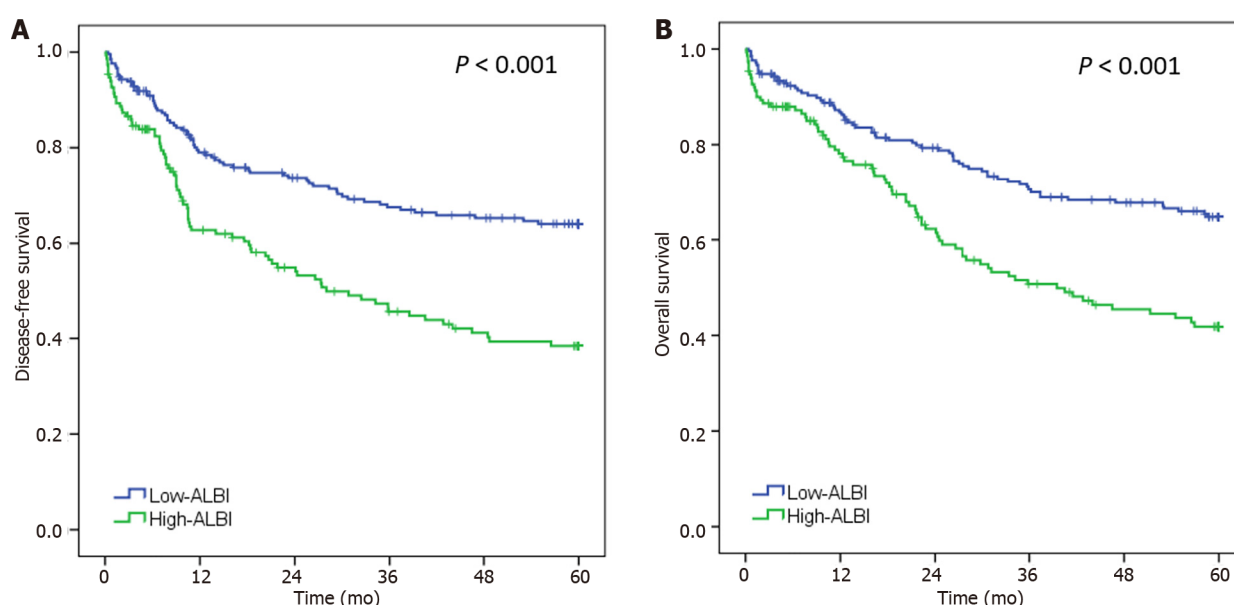
Considering the pathological characteristics, we expected that the high-ALBI group would have deeper gastric wall invasion and more nodal involvement, suggesting that a more advanced disease could cause impaired liver function and possible hepatic hilar compression due to nodal enlargement. However, similar than Kanda *et al*[13], we did not find this association.

Despite not influencing the pTNM stage, in the preset cohort ALBI score was related to patient survival. Patients with high-ALBI were related to both lower DFS and OS when compared to low-ALBI groups, even in the same TNM stages. Similar results have been reported by Zhu *et al*[14] that

Table 5 Univariate and multivariate analysis for overall survival

Overall survival	Univariate			Multivariate		
Variables	HR	95%CI	P value	HR	95%CI	P value
Male (<i>vs</i> female)	1.20	0.85-1.71	0.306	-	-	-
Age > 65 yr (<i>vs</i> < 65 yr)	1.28	0.94-1.79	0.137	-	-	-
Charlson > 1 (<i>vs</i> 0)	1.42	1.02-1.98	0.041	1.25	0.83-1.89	0.282
ASA III/IV (<i>vs</i> ASA I/II)	1.94	1.35-2.80	< 0.001	1.60	1.02-2.52	0.041
Total gastrectomy (<i>vs</i> distal)	1.50	1.08-2.08	0.016	1.56	1.12-2.18	0.009
Diffuse/mixed (<i>vs</i> others)	1.29	0.93-1.79	0.133	-	-	-
pT3/T4 (<i>vs</i> pT1/T2)	2.44	1.65-3.61	< 0.001	1.87	1.20-2.91	0.006
pN+ (<i>vs</i> pN0)	2.24	1.57-3.20	< 0.001	1.58	1.06-2.37	0.026
non-CMT (<i>vs</i> CMT)	1.18	0.85-1.64	0.327	-	-	-
Low-ALBI (<i>vs</i> High-ALBI)	1.97	1.41-2.74	< 0.001	1.68	1.20-2.35	0.003

P values in bold are statistically significant. 95%CI: 95% confidence interval; HR: Hazard ratio; ASA: American Society of Anesthesiologists; ALBI: Albumin-bilirubin; pN: Presence of lymph node metastasis; CMT: Chemotherapy.



DOI: 10.4240/wjgs.v15.i6.1125 Copyright ©The Author(s) 2023.

Figure 2 Disease-free survival and overall survival of patients with gastric cancer according to the albumin-bilirubin groups (low-albumin-bilirubin and high-albumin-bilirubin). A: Disease-free survival; B: Overall survival. ALBI: Albumin-bilirubin.

demonstrated worse OS for patients with GC and high ALBI values, especially those with stage disease II and III. Likewise, Ju *et al*[21] evaluating 244 patients with resected GC showed that increasing in ALBI levels was an independent factor related to OS, with a HR of 2.2. ALBI score was also related to recurrence in advanced GC stage as pT2-T4 after gastrectomy[13]. The association of ALBI with decreased survival can be explained by the prolonged damage caused by a deficient nutritional status, with lower albumin levels and anemia (both seen in our cohort). In addition to debilitating the patient, decreasing adherence to chemotherapy[25,26], malnutrition also affects cell-mediated immunity by T cells, which impairs anti-tumor response and accelerates tumor progression[5,23,27].

Noteworthy, some authors also demonstrated differences in relation to the incidence of POC according to the ALBI score, as described by Aoyama *et al*[10], where the incidence of postoperative anastomotic leakage in patients with esophageal cancer was 46.3% in the ALBI-high group compared with 27.5% in the ALBI-low group ($P = 0.038$). In patients with GC, some authors reported that there was no significant differences in morbidity and POC rate between ALBI groups[13]; whereas other found that in patients who underwent radical resection, the rate of POC were also higher in patients

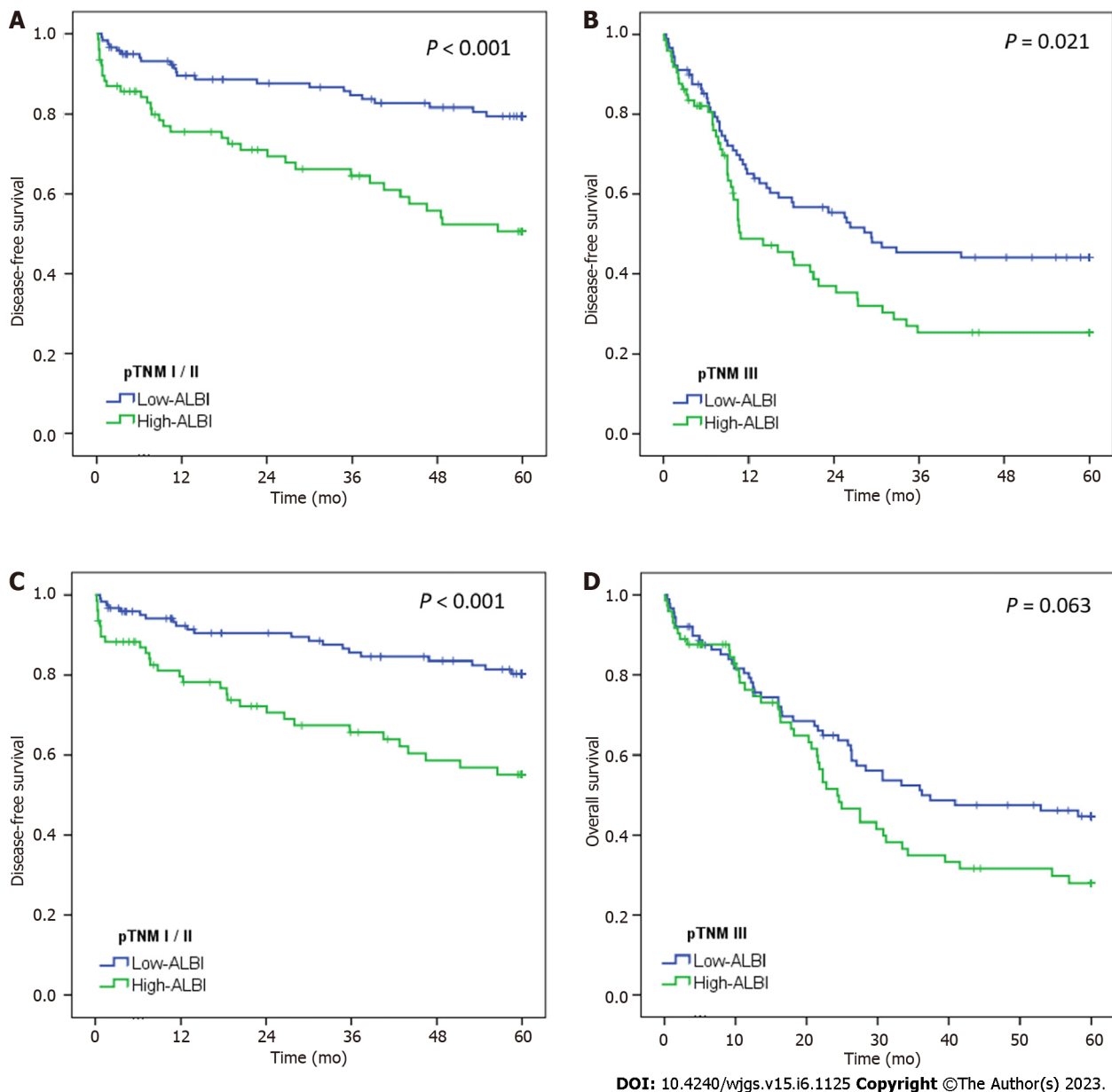


Figure 3 Disease-free survival and overall survival of patients with gastric cancer according to the albumin-bilirubin groups, stratified by pathologic stage. A and B: Disease-free survival; C and D: Overall survival. pTNM: Pathologic; ALBI: Albumin-bilirubin.

with high-ALBI than low-ALBI levels[14]. Similarly, in our cohort, we also observed that the incidence of major POC was higher in the high-ALBI group, including the mortality at 30 d and 90 d. One of the justifications for this result is probably related to the age of patients, since high-ALBI group are generally older, as seen in our study. So, it may represent a frail group of patients with a higher risk of complications[28]. Still, poor nutritional status can contribute to a higher risk of POC[29], since preoperative hypoproteinemia has already been reported as a risk factor for postoperative infection in gastrointestinal surgery[30]. So, in our study, ALBI had a clinical impact on both short-term and long-term outcomes.

Overall, we proposed a risk stratification in two groups based on ALBI values, which was independently associated with survival and may serve as an additional parameter to predict patient outcomes. Both DFS and OS were clearly separated according to the ALBI status, where those classified as high-ALBI had worse survival outcomes. In addition, the preoperative ALBI was found to be a promising marker for predicting disease relapse and survival even in GC with the same TNM stage. As well as other previously described pretreatment serum-based inflammatory indicators, such as the neutrophil to lymphocyte ratio[31], the ALBI score can be determined using routine tests and has potential to be an useful biomarker for patients with GC.

Some limitations should be mentioned in this study. Firstly, this is a retrospective research; therefore, some confounders and selection bias were not absolutely adjusted. Although ALBI grade has been related to the tolerability and introduction of postoperative adjuvant chemotherapy[21,32], since hepatic

dysfunction are one of the main factors for adverse reactions to chemotherapy, it was not possible to assess the influences of the ALBI score on adherence to regimens and/or duration of chemotherapy. However, we believe that this limitation did not affect the results, since no difference in the frequency of patients treated with chemotherapy between low and high-ALBI groups was seen in our cohort. Also, the lack of a predefined cutoff value limits the comparison between studies. Instead, some studies utilized ALBI cutoff value set for patients with HCC, and maybe this is the reason that some results are different from ours. Nonetheless, as strengths, we included a homogeneous cohort consisted by patients who received curative surgery, minimizing the risk of impaired liver function due to the extension of the disease. To our knowledge, this is the first study to assess the prognostic impact of ALBI score in Western GC patients in the real-world setting, treated at a single referral center. Accordingly, our findings should be validated in other series of cases, and a larger scale multicentric validation study to confirm the relationship between ALBI score in GC is warranted.

CONCLUSION

Preoperative ALBI scores were able to predict short- and long-term outcomes in patients with GC who received curative treatment. High-ALBI patients had poor clinical conditions and worse outcomes compared to those with low-ALBI. Also, the ALBI status allowed the risk stratification of patients within the same pTNM stage, and was an independent risk factor associated with survival. Thus, it is a simple and reproducible parameter, which may serve as an additional prognostic factor for GC.

ARTICLE HIGHLIGHTS

Research background

Albumin-bilirubin (ALBI) score is an indicator of liver dysfunction and is useful for predicting prognosis of hepatocellular carcinomas. Currently, this liver function index has been used to predict prognosis in other neoplasms.

Research motivation

The significance of ALBI score in gastric cancer (GC) after radical resection has not been elucidated.

Research objectives

To analyze the significance of ALBI score in GC after curative gastrectomy.

Research methods

We retrospectively evaluated all GC patients who underwent gastrectomy between 2009 and 2021. ALBI score was calculated as follows: $(\log_{10} \text{bilirubin} \times 0.660) + (\text{albumin} \times -0.085)$. The receiver operating characteristic (ROC) curve with area under the curve (AUC) was plotted to evaluate the ability of ALBI score in predicting recurrence or death. Patients were divided into low-ALBI and high-ALBI groups for analysis, based on the optimal cutoff value determined by ROC curve.

Research results

A total of 361 patients were included. The AUC for ALBI score was 0.617, and the cutoff value was -2.82. Accordingly, 211 (58.4%) patients were classified as low-ALBI group and 150 (41.6%) as high-ALBI group. Older age, lower hemoglobin level, American Society of Anesthesiologists classification III/IV, and D1 lymphadenectomy were more frequent in the high-ALBI group. There was no difference between both groups in terms of Lauren histological type, depth of tumor invasion (pT), presence of lymph node metastasis (pN), and pathologic stage (pTNM). Major postoperative complication and 30- and 90-d mortality were higher in high-ALBI patients. In survival analysis, the high-ALBI group had worse disease-free survival and overall survival compared to those with low-ALBI. When stratified by pTNM, the survival difference between ALBI groups was maintained in stage I/II and stage III GC. Multivariate analysis demonstrated that high-ALBI was an independent factor associated to worse survival.

Research conclusions

The preoperative ALBI score is able to predict the outcomes of patients with GC, where high-ALBI patients have worse prognosis. Also, ALBI score allows risk stratification of patients within the same pTNM stages, and represents an independent risk factor associated with survival.

Research perspectives

ALBI score is able to predict short-term and long-term outcomes of patients, and can be applied as a

prognostic factor for GC. The ALBI is a simple and reproducible parameter that allows the risk stratification of patients within the pTNM stages, and may be an additional useful tool for decision-making regarding treatment and follow-up individualization. Thus, our findings can be evaluated in other cohorts, and validated in other series of cases study.

FOOTNOTES

Author contributions: Szor DJ contributed to study design, data retrieval, statistical analysis, critical analysis, and draft of the manuscript; Pereira MA contributed to data retrieval, statistical analysis, critical analysis, and draft of the manuscript; Ramos MFKP, Tustumi F, and Dias AR contributed to data retrieval, critical analysis, and review of the manuscript; Zilberstein B contributed to critical analysis and review of the manuscript; Ribeiro Jr U contributed to implementation of the research, critical analysis, and review of the manuscript.

Institutional review board statement: The study was reviewed and approved by the Hospital Ethics Committee and Registered Online <https://plataformabrasil.saude.gov.br> (approval No. 50971821.8.0000.0068).

Informed consent statement: Informed consent was waived by the local ethics committee given the retrospective nature of the study.

Conflict-of-interest statement: The authors declare no conflict of interest.

Data sharing statement: No additional data are available.

Open-Access: This article is an open-access article that was selected by an in-house editor and fully peer-reviewed by external reviewers. It is distributed in accordance with the Creative Commons Attribution NonCommercial (CC BY-NC 4.0) license, which permits others to distribute, remix, adapt, build upon this work non-commercially, and license their derivative works on different terms, provided the original work is properly cited and the use is non-commercial. See: <https://creativecommons.org/licenses/by-nc/4.0/>

Country/Territory of origin: Brazil

ORCID number: Daniel Jose Szor 0000-0002-9727-9241; Marina Alessandra Pereira 0000-0002-6865-0988; Marcus Fernando Kodama Pertille Ramos 0000-0003-0200-7858; Francisco Tustumi 0000-0001-6695-0496; Andre Roncon Dias 0000-0003-3378-4916; Bruno Zilberstein 0000-0002-1809-8558; Ulysses Ribeiro Jr 0000-0003-1711-7347.

S-Editor: Chen YL

L-Editor: A

P-Editor: Yu HG

REFERENCES

- Sung H, Ferlay J, Siegel RL, Laversanne M, Soerjomataram I, Jemal A, Bray F. Global Cancer Statistics 2020: GLOBOCAN Estimates of Incidence and Mortality Worldwide for 36 Cancers in 185 Countries. *CA Cancer J Clin* 2021; **71**: 209-249 [PMID: 33538338 DOI: 10.3322/caac.21660]
- Kattan MW, Hess KR, Amin MB, Lu Y, Moons KG, Gershenwald JE, Gimotty PA, Guinney JH, Halabi S, Lazar AJ, Mahar AL, Patel T, Sargent DJ, Weiser MR, Compton C; members of the AJCC Precision Medicine Core. American Joint Committee on Cancer acceptance criteria for inclusion of risk models for individualized prognosis in the practice of precision medicine. *CA Cancer J Clin* 2016; **66**: 370-374 [PMID: 26784705 DOI: 10.3322/caac.21339]
- Jiang Y, Xu D, Song H, Qiu B, Tian D, Li Z, Ji Y, Wang J. Inflammation and nutrition-based biomarkers in the prognosis of oesophageal cancer: a systematic review and meta-analysis. *BMJ Open* 2021; **11**: e048324 [PMID: 34593492 DOI: 10.1136/bmjopen-2020-048324]
- Szor DJ, Dias AR, Pereira MA, Ramos MFKP, Zilberstein B, Cecconello I, Ribeiro-Júnior U. Prognostic Role of Neutrophil/Lymphocyte Ratio in Resected Gastric Cancer: A Systematic Review and Meta-analysis. *Clinics (Sao Paulo)* 2018; **73**: e360 [PMID: 29924187 DOI: 10.6061/clinics/2018/e360]
- Fuhrman MP, Charney P, Mueller CM. Hepatic proteins and nutrition assessment. *J Am Diet Assoc* 2004; **104**: 1258-1264 [PMID: 15281044 DOI: 10.1016/j.jada.2004.05.213]
- Johnson PJ, Berhane S, Kagebayashi C, Satomura S, Teng M, Reeves HL, O'Beirne J, Fox R, Skowronska A, Palmer D, Yeo W, Mo F, Lai P, Iñarrairaegui M, Chan SL, Sangro B, Miksad R, Tada T, Kumada T, Toyoda H. Assessment of liver function in patients with hepatocellular carcinoma: a new evidence-based approach-the ALBI grade. *J Clin Oncol* 2015; **33**: 550-558 [PMID: 25512453 DOI: 10.1200/JCO.2014.57.9151]
- Hiraoka A, Kumada T, Kudo M, Hirooka M, Tsuji K, Itobayashi E, Kariyama K, Ishikawa T, Tajiri K, Ochi H, Tada T, Toyoda H, Nouse K, Joko K, Kawasaki H, Hiasa Y, Michitaka K; Real-Life Practice Experts for HCC (RELPEC) Study Group and HCC 48 Group (hepatocellular carcinoma experts from 48 clinics). Albumin-Bilirubin (ALBI) Grade as Part of the Evidence-Based Clinical Practice Guideline for HCC of the Japan Society of Hepatology: A Comparison with the Liver Damage and Child-Pugh Classifications. *Liver Cancer* 2017; **6**: 204-215 [PMID: 28626732 DOI: 10.1155/2017/28626732]

- 10.1159/000452846]
- 8 **Toyoda H**, Johnson PJ. The ALBI score: From liver function in patients with HCC to a general measure of liver function. *JHEP Rep* 2022; **4**: 100557 [PMID: 36124124 DOI: 10.1016/j.jhepr.2022.100557]
- 9 **Lee HG**, Lim SB, Lee JL, Kim CW, Yoon YS, Park IJ, Kim JC. Preoperative albumin-bilirubin score as a prognostic indicator in patients with stage III colon cancer. *Sci Rep* 2022; **12**: 14910 [PMID: 36050367 DOI: 10.1038/s41598-022-19329-8]
- 10 **Aoyama T**, Ju M, Machida D, Komori K, Tamagawa H, Tamagawa A, Maezawa Y, Kano K, Hara K, Segami K, Hashimoto I, Nagasawa S, Nakazono M, Oshima T, Yukawa N, Rino Y. Clinical Impact of Preoperative Albumin-Bilirubin Status in Esophageal Cancer Patients Who Receive Curative Treatment. *In Vivo* 2022; **36**: 1424-1431 [PMID: 35478112 DOI: 10.21873/invivo.12847]
- 11 **Kinoshita F**, Yamashita T, Oku Y, Kosai K, Ono Y, Wakasu S, Haratake N, Toyokawa G, Takenaka T, Tagawa T, Shimokawa M, Nakashima N, Mori M. Prognostic Impact of Albumin-bilirubin (ALBI) Grade on Non-small Lung Cell Carcinoma: A Propensity-score Matched Analysis. *Anticancer Res* 2021; **41**: 1621-1628 [PMID: 33788758 DOI: 10.21873/anticancer.14924]
- 12 **Yagyu T**, Saito H, Sakamoto T, Uchinaka EI, Morimoto M, Amisaki M, Watanabe J, Tokuyasu N, Honjo S, Ashida K, Fujiwara Y. Preoperative Albumin-Bilirubin Grade as a Useful Prognostic Indicator in Patients With Pancreatic Cancer. *Anticancer Res* 2019; **39**: 1441-1446 [PMID: 30842180 DOI: 10.21873/anticancer.13260]
- 13 **Kanda M**, Tanaka C, Kobayashi D, Uda H, Inaoka K, Tanaka Y, Hayashi M, Iwata N, Yamada S, Fujii T, Sugimoto H, Murotani K, Fujiwara M, Kodera Y. Preoperative Albumin-Bilirubin Grade Predicts Recurrences After Radical Gastrectomy in Patients with pT2-4 Gastric Cancer. *World J Surg* 2018; **42**: 773-781 [PMID: 28920160 DOI: 10.1007/s00268-017-4234-x]
- 14 **Zhu C**, Wang X, Chen S, Yang X, Sun J, Pan B, Zhang W, Chen X, Huang Y. Efficacy of the Preoperative Albumin-Bilirubin Grade for Predicting Survival and Outcomes of Postoperative Chemotherapy for Advanced Gastric Cancer. *Cancer Manag Res* 2020; **12**: 11921-11932 [PMID: 33244269 DOI: 10.2147/CMAR.S279782]
- 15 **Charlson ME**, Pompei P, Ales KL, MacKenzie CR. A new method of classifying prognostic comorbidity in longitudinal studies: development and validation. *J Chronic Dis* 1987; **40**: 373-383 [PMID: 3558716 DOI: 10.1016/0021-9681(87)90171-8]
- 16 **Japanese Gastric Cancer Association**. Japanese gastric cancer treatment guidelines 2018 (5th edition). *Gastric Cancer* 2021; **24**: 1-21 [PMID: 32060757 DOI: 10.1007/s10120-020-01042-y]
- 17 **Amin MB**, Greene FL, Edge SB, Compton CC, Gershenwald JE, Brookland RK, Meyer L, Gress DM, Byrd DR, Winchester DP. The Eighth Edition AJCC Cancer Staging Manual: Continuing to build a bridge from a population-based to a more "personalized" approach to cancer staging. *CA Cancer J Clin* 2017; **67**: 93-99 [PMID: 28094848 DOI: 10.3322/caac.21388]
- 18 **Dindo D**, Demartines N, Clavien PA. Classification of surgical complications: a new proposal with evaluation in a cohort of 6336 patients and results of a survey. *Ann Surg* 2004; **240**: 205-213 [PMID: 15273542 DOI: 10.1097/01.sla.0000133083.54934.ae]
- 19 **Tanriverdi O**. A discussion of serum albumin level in advanced-stage hepatocellular carcinoma: a medical oncologist's perspective. *Med Oncol* 2014; **31**: 282 [PMID: 25316265 DOI: 10.1007/s12032-014-0282-3]
- 20 **Bannaga A**, Arasaradnam RP. Neutrophil to lymphocyte ratio and albumin bilirubin grade in hepatocellular carcinoma: A systematic review. *World J Gastroenterol* 2020; **26**: 5022-5049 [PMID: 32952347 DOI: 10.3748/wjg.v26.i33.5022]
- 21 **Ju M**, Aoyama T, Komori K, Tamagawa H, Tamagawa A, Maezawa Y, Morita J, Onodera A, Endo K, Hashimoto I, Kano K, Hara K, Cho H, Nakazono M, Segami K, Ishiguro T, Onuma S, Oshima T, Yukawa N, Rino Y. The Albumin-Bilirubin Score Is a Prognostic Factor for Gastric Cancer Patients Who Receive Curative Treatment. *Anticancer Res* 2022; **42**: 3929-3935 [PMID: 35896262 DOI: 10.21873/anticancer.15887]
- 22 **Matsukane R**, Watanabe H, Hata K, Suetsugu K, Tsuji T, Egashira N, Nakanishi Y, Okamoto I, Ieiri I. Prognostic significance of pre-treatment ALBI grade in advanced non-small cell lung cancer receiving immune checkpoint therapy. *Sci Rep* 2021; **11**: 15057 [PMID: 34301991 DOI: 10.1038/s41598-021-94336-9]
- 23 **Takama T**, Okano K, Kondo A, Akamoto S, Fujiwara M, Usuki H, Suzuki Y. Predictors of postoperative complications in elderly and oldest old patients with gastric cancer. *Gastric Cancer* 2015; **18**: 653-661 [PMID: 24874161 DOI: 10.1007/s10120-014-0387-6]
- 24 **Seyed Khoei N**, Wagner KH, Carreras-Torres R, Gunter MJ, Murphy N, Freisling H. Associations between Prediagnostic Circulating Bilirubin Levels and Risk of Gastrointestinal Cancers in the UK Biobank. *Cancers (Basel)* 2021; **13** [PMID: 34206031 DOI: 10.3390/cancers13112749]
- 25 **Ramos MFKP**, Pereira MA, Dias AR, Yagi OK, Zaidan EP, Ribeiro-Júnior U, Zilberstein B, Cecconello I. Surgical outcomes of gastrectomy with D1 Lymph node dissection performed for patients with unfavorable clinical conditions. *Eur J Surg Oncol* 2019; **45**: 460-465 [PMID: 30497814 DOI: 10.1016/j.ejso.2018.11.013]
- 26 **Ramos MFKP**, de Castria TB, Pereira MA, Dias AR, Antonacio FF, Zilberstein B, Hoff PMG, Ribeiro U Jr, Cecconello I. Return to Intended Oncologic Treatment (RIOT) in Resected Gastric Cancer Patients. *J Gastrointest Surg* 2020; **24**: 19-27 [PMID: 31745892 DOI: 10.1007/s11605-019-04462-z]
- 27 **Thurnham DI**. Interactions between nutrition and immune function: using inflammation biomarkers to interpret micronutrient status. *Proc Nutr Soc* 2014; **73**: 1-8 [PMID: 24169363 DOI: 10.1017/S0029665113003662]
- 28 **Silva FDA**, Pereira MA, Ramos MFKP, Ribeiro-Junior U, Zilberstein B, Cecconello I, Dias AR. Gastrectomy in octogenarians with gastric cancer: is it feasible? *Arq Bras Cir Dig* 2021; **33**: e1552 [PMID: 33503112 DOI: 10.1590/0102-672020200004e1552]
- 29 **Song GM**, Tian X, Liang H, Yi LJ, Zhou JG, Zeng Z, Shuai T, Ou YX, Zhang L, Wang Y. Role of Enteral Immunonutrition in Patients Undergoing Surgery for Gastric Cancer: A Systematic Review and Meta-Analysis of Randomized Controlled Trials. *Medicine (Baltimore)* 2015; **94**: e1311 [PMID: 26252314 DOI: 10.1097/MD.0000000000001311]
- 30 **Hennessey DB**, Burke JP, Ni-Dhonochu T, Shields C, Winter DC, Mealy K. Preoperative hypoalbuminemia is an

independent risk factor for the development of surgical site infection following gastrointestinal surgery: a multi-institutional study. *Ann Surg* 2010; **252**: 325-329 [PMID: 20647925 DOI: 10.1097/SLA.0b013e3181e9819a]

- 31 **Szor DJ**, Roncon Dias A, Pereira MA, Ramos MFKP, Zilberstein B, Ceconello I, Ribeiro U Jr. Neutrophil-lymphocyte ratio is associated with prognosis in patients who underwent potentially curative resection for gastric cancer. *J Surg Oncol* 2018; **117**: 851-857 [PMID: 29509963 DOI: 10.1002/jso.25036]
- 32 **Miwa T**, Kanda M, Tanaka C, Kobayashi D, Hayashi M, Yamada S, Nakayama G, Koike M, Kodera Y. Albumin-Bilirubin Score Predicts Tolerability to Adjuvant S-1 Monotherapy after Curative Gastrectomy. *J Gastric Cancer* 2019; **19**: 183-192 [PMID: 31245163 DOI: 10.5230/jgc.2019.19.e15]



Published by **Baishideng Publishing Group Inc**
7041 Koll Center Parkway, Suite 160, Pleasanton, CA 94566, USA

Telephone: +1-925-3991568

E-mail: bpgoffice@wjgnet.com

Help Desk: <https://www.f6publishing.com/helpdesk>

<https://www.wjgnet.com>

