

# World Journal of *Gastrointestinal Surgery*

*World J Gastrointest Surg* 2023 September 27; 15(9): 1841-2097



## Contents

Monthly Volume 15 Number 9 September 27, 2023

## REVIEW

- 1841** Indocyanine green dye and its application in gastrointestinal surgery: The future is bright green  
*Lim ZY, Mohan S, Balasubramaniam S, Ahmed S, Siew CCH, Shelat VG*
- 1858** Hepatic ischemia-reperfusion syndrome and its effect on the cardiovascular system: The role of treprostinil, a synthetic prostacyclin analog  
*Mouratidou C, Pavlidis ET, Katsanos G, Kotoulas SC, Mouloudi E, Tsoulfas G, Galanis IN, Pavlidis TE*

## MINIREVIEWS

- 1871** Advances and challenges of gastrostomy insertion in children  
*Bitar R, Azaz A, Rawat D, Hobeldin M, Miqdady M, Abdelsalam S*
- 1879** Surgical decompression for the management of abdominal compartment syndrome with severe acute pancreatitis: A narrative review  
*Nasa P, Chanchalani G, Juneja D, Malbrain ML*

## ORIGINAL ARTICLE

## Retrospective Cohort Study

- 1892** Excision of malignant and pre-malignant rectal lesions by transanal endoscopic microsurgery in patients under 50 years of age  
*Shilo Yaacobi D, Berger Y, Shaltiel T, Bekhor EY, Khalifa M, Issa N*
- 1901** Safety and feasibility of modified duct-to-mucosa pancreaticojejunostomy during pancreatoduodenectomy: A retrospective cohort study  
*Sun Y, Yu XF, Yao H, Xu S, Ma YQ, Chai C*

## Retrospective Study

- 1910** Application of early enteral nutrition nursing based on enhanced recovery after surgery theory in patients with digestive surgery  
*Shao YR, Ke X, Luo LH, Xu JD, Xu LQ*
- 1919** Autologous bone marrow infusion *via* portal vein combined with splenectomy for decompensated liver cirrhosis: A retrospective study  
*Liu BC, Cheng MR, Lang L, Li L, Si YH, Li AJ, Xu Q, Zhang H*
- 1932** Application of multidisciplinary collaborative nursing with family care for enhanced recovery after surgery in children with inguinal hernia  
*Wang XM, Hou Q*
- 1941** Preoperative and postoperative complications as risk factors for delayed gastric emptying following pancreaticoduodenectomy: A single-center retrospective study  
*Xie FL, Ren LJ, Xu WD, Xu TL, Ge XQ, Li W, Ge XM, Zhou WK, Li K, Zhang YH, Wang Z*

- 1950** Efficacy of ileus tube combined with meglumine diatrizoate in treating postoperative inflammatory bowel obstruction after surgery  
*Yang W, Pu J*
- 1959** Effect of internet multiple linkage mode-based extended care combined with in-hospital comfort care on colorectal cancer patients undergoing colostomy  
*Xu L, Zhou MZ*
- 1969** Short- and long-term results of open *vs* laparoscopic multisegmental resection and anastomosis for synchronous colorectal cancer located in separate segments  
*Quan JC, Zhou XJ, Mei SW, Liu JG, Qiu WL, Zhang JZ, Li B, Li YG, Wang XS, Chang H, Tang JQ*
- 1978** Prediction model of stress ulcer after laparoscopic surgery for colorectal cancer established by machine learning algorithm  
*Yu DM, Wu CX, Sun JY, Xue H, Yuwen Z, Feng JX*
- 1986** Effect of two surgical approaches on the lung function and prognosis of patients with combined esophago-gastric cancer  
*Sun CB, Han XQ, Wang H, Zhang YX, Wang MC, Liu YN*
- 1995** Clinical significance of serum oxidative stress and serum uric acid levels before surgery for hepatitis B-related liver cancer  
*Hou JX, Wang YB, Wu J, Ding GS, Wu Y, Wei LH, Wang F, Zhang ZM*
- 2003** Multifactor analysis of the technique in total laparoscopic gastric cancer  
*Shi JK, Wang B, Zhang XS, Lv P, Chen YL, Ren SY*
- 2012** Value of enhanced computed tomography in differentiating small mesenchymal tumours of the gastrointestinal from smooth muscle tumours  
*Nie WJ, Jing Z, Hua M*
- 2021** Risk factors for myocardial injury during living donor liver transplantation in pediatric patients with biliary atresia  
*Wu YL, Li TY, Gong XY, Che L, Sheng MW, Yu WL, Weng YQ*

**Observational Study**

- 2032** Comparative detection of syndecan-2 methylation in preoperative and postoperative stool DNA in patients with colorectal cancer  
*Song JH, Oh TJ, An S, Lee KH, Kim JY, Kim JS*

**Prospective Study**

- 2042** Preoperative prediction of microvascular invasion in hepatocellular carcinoma using ultrasound features including elasticity  
*Jiang D, Qian Y, Tan BB, Zhu XL, Dong H, Qian R*
- 2052** Quantitative evaluation of colorectal tumour vasculature using contrast-enhanced ultrasound: Correlation with angiogenesis and prognostic significance  
*Li MH, Li WW, He L, Li JF, Zhang SY*

## CASE REPORT

- 2063** Laparoscopy-assisted gastrectomy for advanced gastric cancer patients with situs inversus totalis: Two case reports and review of literature  
*Liu HB, Cai XP, Lu Z, Xiong B, Peng CW*
- 2074** Acute flare of systemic lupus erythematosus with extensive gastrointestinal involvement: A case report and review of literature  
*Huang H, Li P, Zhang D, Zhang MX, Yu K*
- 2083** Surgical management of gallstone ileus after one anastomosis gastric bypass: A case report  
*El Feghali E, Akel R, Chamaa B, Kazan D, Chakhtoura G*
- 2089** Dual transformation therapy for giant hepatocellular carcinoma: Two case reports and review of literature  
*Gao Q, Zhu GZ, Han CY, Ye XP, Huang HS, Mo ST, Peng T*

**ABOUT COVER**

Editorial Board Member of *World Journal of Gastrointestinal Surgery*, Sung Uk Bae, MD, PhD, Associate Professor, Department of Surgery, Keimyung University Dongsan Hospital, Daegu 42601, South Korea.  
sabiston0000@hanmail.net

**AIMS AND SCOPE**

The primary aim of *World Journal of Gastrointestinal Surgery* (WJGS, *World J Gastrointest Surg*) is to provide scholars and readers from various fields of gastrointestinal surgery with a platform to publish high-quality basic and clinical research articles and communicate their research findings online.

WJGS mainly publishes articles reporting research results and findings obtained in the field of gastrointestinal surgery and covering a wide range of topics including biliary tract surgical procedures, biliopancreatic diversion, colectomy, esophagectomy, esophagostomy, pancreas transplantation, and pancreatectomy, etc.

**INDEXING/ABSTRACTING**

The WJGS is now abstracted and indexed in Science Citation Index Expanded (SCIE, also known as SciSearch®), Current Contents/Clinical Medicine, Journal Citation Reports/Science Edition, PubMed, PubMed Central, Reference Citation Analysis, China National Knowledge Infrastructure, China Science and Technology Journal Database, and Superstar Journals Database. The 2023 Edition of Journal Citation Reports® cites the 2022 impact factor (IF) for WJGS as 2.0; IF without journal self cites: 1.9; 5-year IF: 2.2; Journal Citation Indicator: 0.52; Ranking: 113 among 212 journals in surgery; Quartile category: Q3; Ranking: 81 among 93 journals in gastroenterology and hepatology; and Quartile category: Q4.

**RESPONSIBLE EDITORS FOR THIS ISSUE**

Production Editor: Rui-Rui Wu; Production Department Director: Xiang Li; Editorial Office Director: Jia-Ru Fan.

**NAME OF JOURNAL**

*World Journal of Gastrointestinal Surgery*

**ISSN**

ISSN 1948-9366 (online)

**LAUNCH DATE**

November 30, 2009

**FREQUENCY**

Monthly

**EDITORS-IN-CHIEF**

Peter Schemmer

**EDITORIAL BOARD MEMBERS**

<https://www.wjgnet.com/1948-9366/editorialboard.htm>

**PUBLICATION DATE**

September 27, 2023

**COPYRIGHT**

© 2023 Baishideng Publishing Group Inc

**INSTRUCTIONS TO AUTHORS**

<https://www.wjgnet.com/bpg/gerinfo/204>

**GUIDELINES FOR ETHICS DOCUMENTS**

<https://www.wjgnet.com/bpg/GerInfo/287>

**GUIDELINES FOR NON-NATIVE SPEAKERS OF ENGLISH**

<https://www.wjgnet.com/bpg/gerinfo/240>

**PUBLICATION ETHICS**

<https://www.wjgnet.com/bpg/GerInfo/288>

**PUBLICATION MISCONDUCT**

<https://www.wjgnet.com/bpg/gerinfo/208>

**ARTICLE PROCESSING CHARGE**

<https://www.wjgnet.com/bpg/gerinfo/242>

**STEPS FOR SUBMITTING MANUSCRIPTS**

<https://www.wjgnet.com/bpg/GerInfo/239>

**ONLINE SUBMISSION**

<https://www.f6publishing.com>



## Prospective Study

# Quantitative evaluation of colorectal tumour vasculature using contrast-enhanced ultrasound: Correlation with angiogenesis and prognostic significance

Ming-Hui Li, Wei-Wei Li, Ling He, Jian-Fang Li, Sun-Yan Zhang

**Specialty type:** Gastroenterology and hepatology

**Provenance and peer review:** Unsolicited article; Externally peer reviewed.

**Peer-review model:** Single blind

**Peer-review report's scientific quality classification**

Grade A (Excellent): 0  
Grade B (Very good): 0  
Grade C (Good): C, C  
Grade D (Fair): 0  
Grade E (Poor): 0

**P-Reviewer:** Garcia K, Spain;  
Johnson CH, United States

**Received:** June 14, 2023

**Peer-review started:** June 14, 2023

**First decision:** July 3, 2023

**Revised:** July 11, 2023

**Accepted:** July 26, 2023

**Article in press:** July 26, 2023

**Published online:** September 27, 2023



**Ming-Hui Li, Wei-Wei Li, Ling He,** Department of Ultrasound, Tumor Hospital Affiliated to Xinjiang Medical University, Urumqi 830011, Xinjiang Uygur Autonomous Regions, China

**Jian-Fang Li,** Department of Medical Imaging, Baoding Maternal and Child Health Hospital, Baoding 071023, Hebei Province, China

**Sun-Yan Zhang,** Department of Ultrasonography, Nantong Haimen District People's Hospital, Nantong 226100, Jiangsu Province, China

**Corresponding author:** Sun-Yan Zhang, MD, Attending Doctor, Department of Ultrasonography, Nantong Haimen District People's Hospital, No. 1201 Beijing Road, Haimen District, Nantong 226100, Jiangsu Province, China. [klts1223@sohu.com](mailto:klts1223@sohu.com)

## Abstract

### BACKGROUND

Ultrasound is a vital tool for the diagnosis and management of colorectal cancer (CRC). Contrast-enhanced ultrasound (CEUS) is a non-invasive, safe, and cost-effective method for evaluating tumour blood vessels, that play a crucial role in tumour growth and progression.

### AIM

To explore CEUS's role in the quantitative evaluation of CRC blood vessels and their correlation with angiogenesis markers and prognosis.

### METHODS

This study prospectively enrolled 100 patients with CRC confirmed by histopathology. All patients received preoperative CEUS examinations. Quantitative parameters, such as peak intensity (PI), time to peak (TTP), and area under the curve (AUC), were derived from time-intensity curve (TIC) analysis. Tumour tissue samples were obtained during surgery and examined immunohistochemically to assess the expression of angiogenesis markers, including vascular endothelial growth factor (VEGF) and microvessel density (MVD). The correlation between CEUS parameters, angiogenesis markers, and clinicopathological features was evaluated using appropriate statistical tests.

### RESULTS



Quantitative CEUS parameters (PI, TTP, and AUC) showed significant correlations with VEGF expression ( $P < 0.001$ ) and MVD ( $P < 0.001$ ), indicating a strong link between tumour blood vessels and angiogenesis. Increased PI, reduced TTP, and expanded AUC values were significantly related to higher tumour stage ( $P < 0.001$ ), lymph node metastasis ( $P < 0.001$ ), and distant metastasis ( $P < 0.001$ ). Furthermore, these parameters were recognized as independent predictors of overall survival and disease-free survival in multivariate analysis ( $P < 0.001$ ).

## CONCLUSION

CEUS has a high potential in guiding treatment planning and predicting patient outcomes. However, more comprehensive, multicentre studies are required to validate the clinical utility of CEUS in CRC management.

**Key Words:** Contrast-enhanced ultrasound; Colorectal cancer; Tumour angiogenesis; Prognosis; Microvessel density; Vascular endothelial growth factor; Tumour

©The Author(s) 2023. Published by Baishideng Publishing Group Inc. All rights reserved.

**Core Tip:** This study investigates the role of contrast-enhanced ultrasound (CEUS) in evaluating colorectal cancer (CRC) blood vessels and their correlation with angiogenesis markers and prognosis. The study enrolled 100 patients with CRC, and quantitative CEUS parameters showed significant correlations with angiogenesis markers and clinicopathological features. The study concludes that CEUS has high potential in guiding treatment planning and predicting patient outcomes but requires further validation through multicentre studies.

**Citation:** Li MH, Li WW, He L, Li JF, Zhang SY. Quantitative evaluation of colorectal tumour vasculature using contrast-enhanced ultrasound: Correlation with angiogenesis and prognostic significance. *World J Gastrointest Surg* 2023; 15(9): 2052-2062

**URL:** <https://www.wjgnet.com/1948-9366/full/v15/i9/2052.htm>

**DOI:** <https://dx.doi.org/10.4240/wjgs.v15.i9.2052>

## INTRODUCTION

Colorectal cancer (CRC) is the third most prevalent cancer and the second leading cause of cancer-related fatalities globally, with approximately 1.8 million new cases and nearly 900000 deaths in 2021[1]. The high mortality rate is attributed to late diagnosis, insufficient staging, and ineffective treatment approaches. Therefore, early detection and precise staging are crucial for optimizing treatment plans and improving patient outcomes[2]. In recent decades, advancements in medical imaging techniques have significantly improved diagnostic precision in CRC[3]. Among these imaging methods, contrast-enhanced ultrasound (CEUS) has gained increased interest for its potential in evaluating tumour blood flow and vascularization.

Tumour vasculature plays a critical role in its growth, progression, and metastasis. Rapidly expanding tumours require a substantial blood supply to ensure sufficient delivery of nutrients and oxygen, while simultaneously eliminating waste products[4]. This demand for blood supply is met through angiogenesis, a process of formation of new blood vessels from pre-existing ones. Angiogenesis is regulated by a fine equilibrium between pro-angiogenic and anti-angiogenic factors, with vascular endothelial growth factor (VEGF) being the strongest promoter of angiogenesis[5]. Tumour blood vessel density, also known as microvessel density (MVD), serves as a surrogate marker for angiogenesis and has been associated with tumour aggressiveness and unfavourable prognosis in various cancers, including CRC[6].

CEUS is a relatively novel imaging technique that employs intravenously administered microbubble contrast agents to improve ultrasound images[7]. The echogenicity of microbubbles enhances visualization of blood flow within the vasculature. By utilizing the non-linear behaviour of microbubbles, CEUS can produce real-time, high-resolution images of tissue perfusion and vascular structure with a high signal-to-noise ratio[8,9]. Compared with other imaging techniques, such as ultrasound, computed tomography (CT), magnetic resonance imaging (MRI), *etc.*, CEUS has several advantages for CRC imaging. First, CEUS can provide high-resolution images of tumour vasculature without being affected by bone or gas interference[10]. Second, CEUS can offer real-time dynamic information on tissue perfusion and blood flow velocity with a high temporal resolution[11]. Third, CEUS can provide quantitative parameters for tumour vascularization analysis using time-intensity curve (TIC) analysis[12]. Fourth, CEUS is a non-invasive, safe, and cost-effective method that does not expose patients to ionizing radiation or nephrotoxic contrast agents[13].

Several studies have examined the potential of CEUS in assessing tumour vasculature in CRC[14-17]. Most of these studies have only focused on qualitative or semi-quantitative analyses, such as visual grading of enhancement patterns or evaluating TIC parameters without thoroughly investigating their correlation with angiogenesis markers and prognostic factors. Additionally, a majority of these studies have been limited by small sample sizes and a lack of standardized CEUS examination and analysis techniques.

Considering these limitations, the present study aimed to explore the role of CEUS in quantitatively evaluating colorectal tumour vasculature and its correlation with angiogenesis markers (VEGF and MVD) and prognostic factors. We hypothesized that quantitative CEUS parameters would significantly correlate with angiogenesis markers, and

elevated CEUS-derived parameter values would be associated with aggressive tumour features and poor prognosis. To investigate these hypotheses, we conducted a prospective study with a relatively large cohort of patients with histologically confirmed CRC who underwent preoperative CEUS examinations using standardized techniques. Moreover, we used a comprehensive approach to data analysis, including assessment of TIC-derived parameters and their correlation with angiogenesis markers, clinicopathological characteristics, and survival outcomes.

This study aimed to provide valuable insights into the potential of CEUS as a non-invasive tool for evaluating tumour vasculature in CRC and establish its clinical utility in guiding treatment decisions and predicting patient outcomes. The study's findings may contribute to the growing evidence supporting the use of CEUS in CRC management and pave the way for future large-scale, multicentre trials to validate and expand upon these findings.

## MATERIALS AND METHODS

### Study population

This study prospectively enrolled 100 patients with histologically confirmed CRC from January 2020 to December 2022. Inclusion criteria were as follows: (1) Age  $\geq 18$  years; (2) Pathologically confirmed primary colorectal adenocarcinoma; (3) No history of chemotherapy or radiotherapy; and (4) Ability to provide informed consent. Exclusion criteria were as follows: (1) Contraindications to ultrasound contrast agents, such as severe allergic reactions; (2) Pregnancy or lactation; and (3) Severe comorbidities affecting survival outcomes, such as end-stage renal disease, chronic heart failure, or uncontrolled diabetes. This study was approved by the Xinjiang Medical University Affiliated Cancer Hospital institutional review board and adhered to the standards of the Declaration of Helsinki.

### CEUS examination

All patients underwent CEUS examinations within two weeks before surgery using a high-end ultrasound system (LOGIQ E9, GE Healthcare, Milwaukee, WI, United States) with a 1-6 MHz convex array transducer (C1-6, GE Healthcare) and dedicated contrast-specific imaging software (Contrast Harmonic Imaging, GE Healthcare). Patients were placed in a supine position, and a baseline grayscale and colour Doppler ultrasound examinations were conducted to assess tumour's location, size, and morphology.

A 2.4 mL dose of SonoVue (Bracco, Milan, Italy), a microbubble contrast agent containing sulphur hexafluoride gas encapsulated in a phospholipid shell, was administered intravenously as a single bolus injection, followed by a 10 mL saline flush. CEUS examination began immediately after injection and continued for 5 min. Mechanical index was set at a low level ( $\leq 0.1$ ) to minimize microbubble destruction. Imaging parameters, including gain, time gain compensation, and focal zone, were adjusted to optimize image quality and maintain consistent contrast-enhanced image appearance. Experienced sonographers, blinded to patients' clinical information, performed all CEUS examinations.

### CEUS image analysis

CEUS images were stored in DICOM format and analysed offline using VueBox software (Bracco, Milan, Italy). Regions of interests (ROIs) were manually drawn to encompass the entire enhancing tumour area on CEUS images. The software generated TICs for the selected ROIs, displaying the change in intensity over time. Three quantitative CEUS parameters were derived from the TIC analysis: Peak intensity (PI), time to peak (TTP), and area under the curve (AUC). PI represented the maximum intensity reached within the ROI during the observation period, TTP indicated the time required reaching the PI, and AUC corresponded to the total amount of contrast agent within the ROI during the examination.

### Immunohistochemical analysis

During surgery, cancerous tissue samples were collected, preserved in 40 g/L neutral buffered formaldehyde, and embedded in paraffin before being sliced into 4  $\mu\text{m}$ -thick sections. These sections were deparaffinised, rehydrated, and subjected to antigen retrieval using a citrate buffer (pH = 6.0) and microwave heat treatment. Subsequently, they were treated with 3% hydrogen peroxide for 10 min to neutralize endogenous peroxidase activity and incubated overnight at 4 °C with primary antibodies targeting VEGF (1:200, rabbit polyclonal, Abcam, Cambridge, United Kingdom) and CD34 (1:100, mouse monoclonal, Dako, Glostrup, Denmark). After rinsing with phosphate-buffered saline, the sections were treated with secondary antibodies conjugated to horseradish peroxidase for 1 h at room temperature and counterstained with haematoxylin. Immunoreactivity was detected using a 3,3'-diaminobenzidine substrate. The percentage of VEGF-positive tumour cells and CD34-positive microvessels were counted using ImageJ software (National Institutes of Health, Bethesda, MD, United States). Five random fields of view per section were selected and captured at 400  $\times$  magnification. The number of positive cells or microvessels and the total number of cells or microvessels were counted manually. The percentage was calculated as the ratio of positive cells or microvessels to total cells or microvessels multiplied by 100.

VEGF expression was evaluated with a semi-quantitative measurement method, which accounted for both the percentage of tumour cells expressing VEGF and the intensity of staining. The percentage of VEGF-positive tumour cells were scored as follows: 0 (0%), 1 (1%-25%), 2 (26%-50%), 3 (51%-75%), and 4 (76%-100%). The intensity of staining was rated using the following categories: 0 (absent), 1 (faint), 2 (moderate), and 3 (vivid). The percentage and intensity scores were multiplied to calculate the final VEGF expression score, ranging from 0-12. High VEGF expression was defined as a score of 6 or higher.

MVD was assessed by enumerating CD34-positive microvessels in the highly vascularized areas of the tumour, termed as 'hotspots'. These hotspots were located using a low-magnification (100  $\times$ ) lens, followed by counting of the



microvessels under high magnification (400 ×). Each endothelial cell or cluster, clearly distinguishable from adjacent microvessels, tumour cells, and connective tissues, qualified as a countable microvessel, regardless of lumen presence. MVD was expressed as the mean quantity of microvessels within each high-power field.

### Statistical analyses

The patients' clinicopathological characteristics, CEUS parameters, and immunohistochemical findings are summarized using descriptive statistics. The relationships between CEUS parameters, angiogenesis markers, and clinicopathological factors were examined using either the Spearman's rank correlation coefficient or Pearson's correlation coefficient, depending on the situation. The Mann-Whitney *U* test or Kruskal-Wallis test was employed, as necessary, to evaluate differences in CEUS parameters concerning VEGF expression and MVD.

The Kaplan-Meier method was used to analyse survival, and the log-rank test was used to evaluate the differences in overall survival (OS) and disease-free survival (DFS) based on CEUS parameters, VEGF expression, and MVD. To identify independent prognostic factors for OS and DFS, a multivariate analysis was conducted using the Cox proportional hazards model. All statistical analyses were performed using the SPSS software (version 26.0, IBM Corp., NY, United States), and a two-sided *P* value < 0.05 was considered to be statistically significant. The statistical method of this study was reviewed by Li Y from the Baoding Maternal and Child Health Hospital.

## RESULTS

### Patient characteristics at baseline

The study enrolled 100 patients, including 57 men and 43 women, with a median age of 63 years (range: 38-84 years). Patients' clinicopathological traits are shown in Table 1. A majority of the tumours were located in the rectum (*n* = 52), while others were found in the sigmoid colon (*n* = 26), ascending colon (*n* = 12), and descending colon (*n* = 10). Based on the TNM staging system, 21 patients had stage I tumours, 29 had stage II tumours, 35 had stage III tumours, and 15 had stage IV tumours. Lymph node metastasis was observed in 50 patients, whereas 15 patients displayed distant metastasis.

### CEUS parameters were positively correlated with angiogenesis markers

The average values of PI, TTP and AUC were  $23.6 \pm 7.8$  dB,  $16.5 \pm 5.6$  s and  $1032.6 \pm 361.3$  dB × s, respectively. High VEGF expression was detected in 56 patients, and the median MVD was 52.5 (range: 12-125). Table 2 shows the correlations between CEUS parameters and angiogenesis markers. Significant positive correlations were observed between PI and both VEGF expression (*r* = 0.73, *P* < 0.001) and MVD (*r* = 0.75, *P* < 0.001). TTP demonstrated significant negative correlations with both VEGF expression (*r* = -0.68, *P* < 0.001) and MVD (*r* = -0.72, *P* < 0.001). Additionally, AUC demonstrated significant positive correlations with both VEGF expression (*r* = 0.71, *P* < 0.001) and MVD (*r* = 0.74, *P* < 0.001).

### CEUS parameters were significantly correlated with aggressive clinicopathological characteristics

Table 3 shows the correlations between CEUS parameters, angiogenesis indicators, and clinicopathological characteristics. As expected, high VEGF expression and MVD were related to advanced tumour stage (*P* < 0.001), lymph node metastasis (*P* < 0.001), and distant metastasis (*P* < 0.001). Additionally, high PI, short TTP, and large AUC values were associated with advanced tumour stage (*P* < 0.001), lymph node metastasis (*P* < 0.001), and distant metastasis (*P* < 0.001). No significant correlations were found between CEUS parameters or angiogenesis markers and age, sex, or tumour location.

### CEUS parameters acted as independent prognostic factors for poor OS and DFS

The average follow-up period was 26 mo (range: 3-36 mo). During this period, 28 patients experienced tumour recurrence and 22 patients died. The OS and DFS rates at 3 years were 78% and 72%, respectively. Figures 1 and 2 show the Kaplan-Meier survival curves for OS and DFS based on CEUS parameters, VEGF expression, and MVD, respectively. Poor OS (*P* < 0.001) and DFS (*P* < 0.001) were significantly associated with high PI, short TTP, and large AUC values. Additionally, poor OS (*P* < 0.001) and DFS (*P* < 0.001) were significantly associated with high VEGF expression and MVD. The multivariate analysis revealed that OS was independently influenced by prognostic factors, including PI [hazard ratio (HR) = 2.55, 95% confidence interval (CI): 1.36-4.78, *P* = 0.003], TTP (HR = 2.34, 95%CI: 1.24-4.41, *P* = 0.008), AUC (HR = 2.62, 95%CI: 1.38-4.96, *P* = 0.003), VEGF expression (HR = 2.47, 95%CI: 1.31-4.65, *P* = 0.005), and MVD (HR = 2.81, 95%CI: 1.49-5.30, *P* = 0.001). Similarly, DFS was also independently affected by prognostic factors, including PI (HR = 2.38, 95%CI: 1.28-4.42, *P* = 0.006), TTP (HR = 2.26, 95%CI: 1.20-4.26, *P* = 0.011), AUC (HR = 2.54, 95%CI: 1.34-4.81, *P* = 0.004), VEGF expression (HR = 2.31, 95%CI: 1.24-4.32, *P* = 0.008), and MVD (HR = 2.67, 95%CI: 1.42-5.03, *P* = 0.002). Table 4 summarizes the results of the multivariate analysis.

## DISCUSSION

Our study demonstrated significant correlations between quantitative CEUS parameters (PI, TTP, and AUC) and angiogenesis markers (VEGF expression and MVD) in CRC. High PI, short TTP, and large AUC values were significantly associated with aggressive tumour features and unfavourable prognosis, independent of other clinicopathological factors. These results suggest that CEUS may be a useful non-invasive imaging modality for assessing tumour vasculature in CRC and could potentially help in guiding treatment planning and predicting patient outcomes.

**Table 1 Patient characteristics**

Characteristic	Number of patients	Percentage
Total patients	100	100%
Men	57	57%
Women	43	43%
Tumour location		
Rectum	52	52%
Sigmoid colon	26	26%
Ascending colon	12	12%
Descending colon	10	10%
Tumour stage		
Stage I	21	21%
Stage II	29	29%
Stage III	35	35%
Stage IV	15	15%
Metastasis		
Lymph node metastasis	50	50%
Distant metastasis	15	15%

**Table 2 Correlations between contrast-enhanced ultrasound parameters and angiogenesis markers**

Parameters	Pearson correlation coefficient ( <i>r</i> )	<i>P</i> value
PI and VEGF	0.73	< 0.001
PI and MVD	0.75	< 0.001
TTP and VEGF	-0.68	< 0.001
TTP and MVD	-0.72	< 0.001
AUC and VEGF	0.71	< 0.001
AUC and MVD	0.74	< 0.001

PI: Peak intensity; VEGF: Vascular endothelial growth factor; TTP: Time to peak; MVD: Microvessel density; AUC: Area under the curve.

**Table 3 Associations between contrast-enhanced ultrasound parameters, angiogenesis markers, and clinicopathological characteristics**

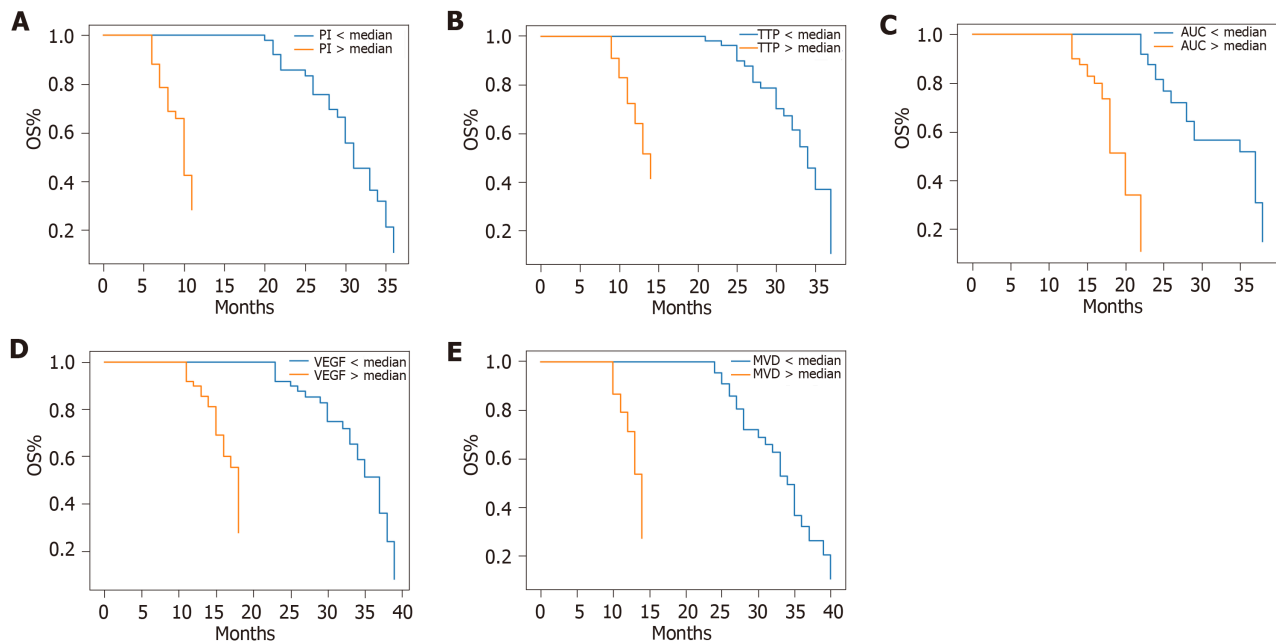
	Tumour stage	Lymph node metastasis	Distant metastasis	Age (yr)	Sex
PI	<i>P</i> < 0.001	<i>P</i> < 0.001	<i>P</i> < 0.001	NS	NS
TTP	<i>P</i> < 0.001	<i>P</i> < 0.001	<i>P</i> < 0.001	NS	NS
AUC	<i>P</i> < 0.001	<i>P</i> < 0.001	<i>P</i> < 0.001	NS	NS
VEGF expression	<i>P</i> < 0.001	<i>P</i> < 0.001	<i>P</i> < 0.001	NS	NS
MVD	<i>P</i> < 0.001	<i>P</i> < 0.001	<i>P</i> < 0.001	NS	NS

NS: No significant; PI: Peak intensity; TTP: Time to peak; AUC: Area under the curve; VEGF: Vascular endothelial growth factor; MVD: Microvessel density.

**Table 4** Multivariate analysis of prognostic factors for overall survival and disease-free survival

Prognostic factor	Hazard ratio (OS)	95%CI (OS)	P value (OS)	Hazard ratio (DFS)	95%CI (DFS)	P value (DFS)
VEGF expression	2.47	1.31-4.65	0.005	2.31	1.24-4.32	0.008
MVD	2.81	1.49-5.30	0.001	2.67	1.42-5.03	0.002
PI	2.55	1.36-4.78	0.003	2.38	1.28-4.42	0.006
TTP	2.34	1.24-4.41	0.008	2.26	1.20-4.26	0.011
AUC	2.62	1.38-4.96	0.003	2.54	1.34-4.81	0.004

OS: Overall survival; DFS: Disease-free survival; CI: Confidence interval; VEGF: Vascular endothelial growth factor; MVD: Microvessel density; PI: Peak intensity; TTP: Time to peak; AUC: Area under the curve.



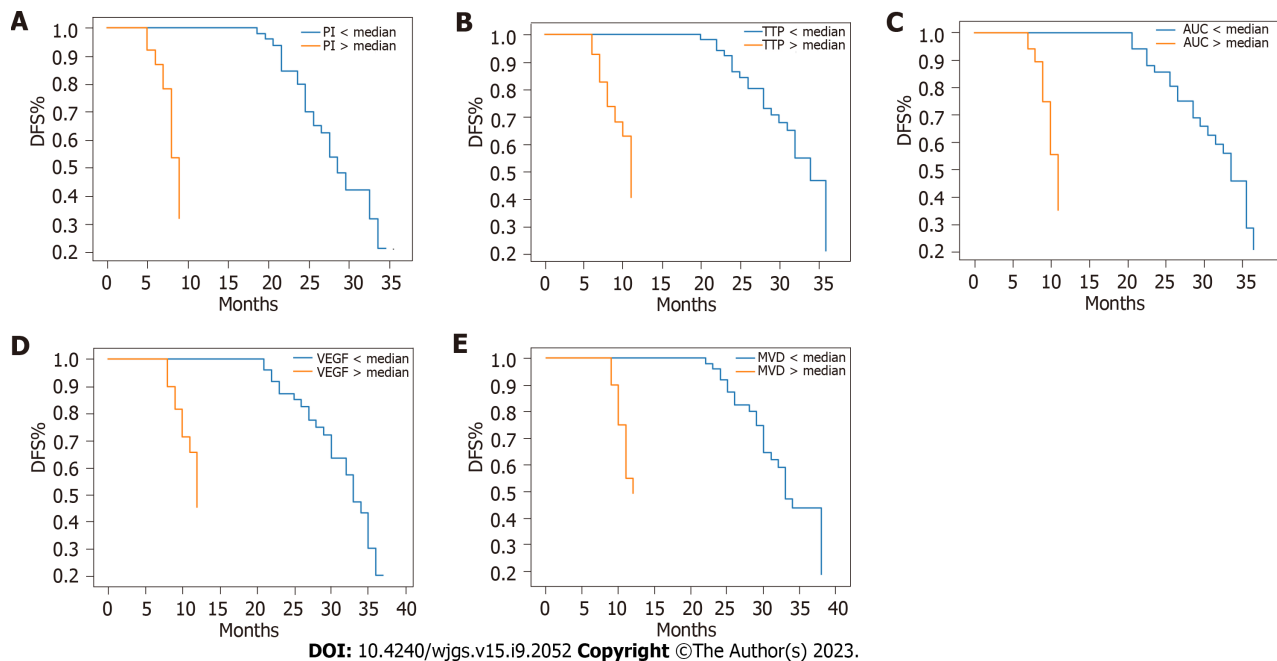
DOI: 10.4240/wjgs.v15.i9.2052 Copyright ©The Author(s) 2023.

**Figure 1** Kaplan-Meier survival curves for overall survival according to contrast-enhanced ultrasound parameters, vascular endothelial growth factor expression, and microvessel density. A: Kaplan-Meier curve for peak intensity; B: Kaplan-Meier curve for time to peak; C: Kaplan-Meier curve for area under the curve; D: Kaplan-Meier curve for vascular endothelial growth factor; E: Kaplan-Meier curve for microvessel density. OS: Overall survival; VEGF: Vascular endothelial growth factor; PI: Peak intensity; TTP: Time to peak; MVD: Microvessel density; AUC: Area under the curve.

The significant correlations between CEUS parameters and angiogenesis markers observed in our study align with the findings of previous literature[18-20]. The positive correlations between PI and VEGF expression and MVD can be explained by the generally greater density of blood vessels in tumours with high VEGF expression and MVD, which leads to increased blood flow and higher PI values on CEUS. Similarly, the negative correlations between TTP and VEGF expression and MVD can be attributed to the faster blood flow in tumours with high VEGF expression and MVD, resulting in a shorter time required to reach PI on CEUS.

The associations between CEUS parameters and clinicopathological characteristics observed in our study are also consistent with the findings of previous research. High PI, short TTP, and large AUC values have been found to correlate with advanced stage, lymph node metastasis, and distant metastasis in various cancers, including CRC[18,21,22]. These associations can be explained by the fact that aggressive tumours typically exhibit higher angiogenesis, leading to increased blood flow and more pronounced contrast enhancement on CEUS. Our survival analysis revealed that high PI, short TTP, and large AUC values were significantly associated with poor OS and DFS, independent of other clinicopathological factors. These results suggest that CEUS parameters could serve as potential prognostic biomarkers in CRC. Furthermore, the significant associations between high VEGF expression, MVD, and poor survival outcomes observed in our study are consistent with those in previous studies, further emphasizing the importance of tumour vasculature in CRC progression and prognosis[23,24].

CEUS provides multiple benefits compared with other imaging techniques, such as CT and MRI, in evaluating tumour vasculature. It is a real-time, non-invasive, and radiation-free imaging modality that provides high spatial and temporal resolution, allowing for a detailed assessment of tumour blood flow and microvasculature[25,26]. Moreover, microbubble contrast agents used in CEUS are purely intravascular, which enables a more accurate evaluation of blood vessel density



**Figure 2** Kaplan-Meier survival curves for disease-free survival according to contrast-enhanced ultrasound parameters, vascular endothelial growth factor expression, and microvessel density. A: Kaplan-Meier curve for peak intensity; B: Kaplan-Meier curve for time to peak; C: Kaplan-Meier curve for area under the curve; D: Kaplan-Meier curve for vascular endothelial growth factor; E: Kaplan-Meier curve for microvessel density. DFS: Disease-free survival; VEGF: Vascular endothelial growth factor; MVD: Microvessel density; TTP: Time to peak; AUC: Area under the curve; PI: Peak intensity.

and perfusion characteristics compared to the contrast agents used in CT and MRI, which have a tendency to extravasate into the interstitial space[27]. Furthermore, CEUS is generally less expensive than CT and MRI, making it a more cost-effective option for patients and healthcare systems[28].

In addition to assessing tumour vasculature, CEUS has also been investigated for other clinical applications in CRC, including detecting and characterizing primary tumours, lymph node staging, and assessing treatment response[29,30]. It has shown to improve the accuracy of primary tumour detection in CRC compared to that of conventional ultrasound, particularly in early-stage tumours, where the sensitivity and specificity of CEUS are reported to be high[31]. Furthermore, CEUS has been investigated for differentiating benign and malignant colorectal lesions based on enhancement patterns and kinetics, with some studies reporting promising results in terms of diagnostic accuracy[32].

CEUS has demonstrated potential utility in identifying metastatic lymph nodes in CRC patients[33]. Several studies have reported that evaluation of lymph node vascularization using CEUS can help differentiate metastatic from non-metastatic lymph nodes, with higher accuracy than conventional ultrasound or CT[34-36]. However, further research is warranted to establish standardized criteria for assessing lymph node involvement using CEUS and to compare its performance with that of other imaging modalities, such as MRI or positron emission tomography.

Monitoring treatment response is another potential clinical application for CEUS in CRC. In recent years, neoadjuvant chemoradiotherapy has become a standard treatment approach for locally advanced rectal cancer, with the goal of downstaging the tumour and improving the likelihood of complete surgical resection[37]. Monitoring the response to neoadjuvant therapy is crucial for determining the optimal timing of surgery and predicting patient outcomes. CEUS has been investigated as a non-invasive method for monitoring changes in tumour vasculature during neoadjuvant treatment, with some studies suggesting that early changes in CEUS parameters can predict treatment response and long-term outcomes[38]. Further research is warranted to establish the role of CEUS in the assessment of treatment response in CRC and to determine the optimal timing and criteria for CEUS evaluation.

Although our study yielded encouraging results, it had certain limitations. First, a relatively small sample size could have affected the statistical power of our analysis. Future research with larger sample size is essential to validate and broaden the implications of our findings. Second, the retrospective design of our study may have led to selection bias; therefore, prospective studies are required to confirm the prognostic significance of CEUS parameters in CRC. Third, our study primarily focused on the correlations between CEUS parameters and angiogenesis markers; however, the underlying biological mechanisms remain to be elucidated. Therefore, further investigations, such as lab-based and animal studies, are required to explore the molecular pathways linking CEUS parameters to angiogenesis and tumour progression in CRC.

## CONCLUSION

Our study demonstrated that quantitative CEUS parameters were significantly associated with angiogenesis markers and prognostic factors in CRC. These findings suggest that CEUS could be a valuable non-invasive tool for assessing tumour

vasculature in CRC and may have potential clinical utility in guiding treatment decisions and predicting patient outcomes. Future studies should focus on validating and expanding upon our findings in large cohorts and exploring the underlying biological mechanisms linking CEUS parameters to angiogenesis and tumour progression in CRC. Moreover, the potential applications of CEUS in other aspects of CRC management, such as primary tumour detection, lymph node staging, and treatment response assessment, should be further investigated to fully understand the clinical potential of this imaging modality.

## ARTICLE HIGHLIGHTS

### Research background

The background of this research study highlights the importance of ultrasound in the diagnosis and management of colorectal cancer (CRC). Contrast-enhanced ultrasound (CEUS) is a non-invasive, safe, and cost-effective method that allows for the evaluation of tumor blood vessels. Tumor angiogenesis, which involves the formation of new blood vessels, plays a critical role in tumor growth and progression.

### Research motivation

The aim of this study was to investigate the role of CEUS in quantitatively assessing CRC blood vessels and their correlation with angiogenesis markers and prognosis.

### Research objectives

Explore the role of CEUS in quantitative assessment of blood vessels in CRC and its correlation with angiogenic markers and prognosis. This study aims to prospectively recruit 100 CRC patients confirmed by histopathology and conduct preoperative CEUS examination.

### Research methods

This study enrolled 100 patients with confirmed CRC through histopathology. Preoperative CEUS examinations were performed on all patients. From the CEUS images, quantitative parameters including peak intensity (PI), time to peak (TTP), and area under the curve (AUC) were derived using time-intensity curve analysis. During surgery, tumor tissue samples were obtained and examined immunohistochemically for the expression of angiogenesis markers, such as vascular endothelial growth factor (VEGF) and microvessel density (MVD). The researchers used appropriate statistical tests to evaluate the correlations between CEUS parameters, angiogenesis markers, and clinicopathological features.

### Research results

The study findings revealed significant associations between the quantitative CEUS parameters (PI, TTP, and AUC) and VEGF expression, MVD, tumor stage, lymph node metastasis, distant metastasis, overall survival, and disease-free survival. The study concluded that CEUS holds potential for guiding treatment planning and predicting patient outcomes in CRC management but emphasized the need for more comprehensive multicenter studies to validate its clinical utility.

### Research conclusions

Demonstrated that CEUS has a significant role in the quantitative evaluation of CRC blood vessels. The quantitative CEUS parameters (PI, TTP, and AUC) showed strong correlations with angiogenesis markers, specifically VEGF expression and MVD. These findings indicate the importance of tumor blood vessels in angiogenesis and tumor progression.

### Research perspectives

The study demonstrates the potential of CEUS in guiding treatment decisions and predicting patient outcomes in CRC, further comprehensive studies involving multiple centers are necessary to validate its clinical utility.

## ACKNOWLEDGEMENTS

Thank you to all those who have contributed to this manuscript.

## FOOTNOTES

**Author contributions:** Li MH and Li JF designed and coordinated this study; Li WW and He L conducted experiments to obtain and analyze data; Zhang SY, Li MH, Li WW, and Zhang SY explained the data; Li JF, He L, Li WW, Li MH, and Zhang SY wrote the manuscript; and all authors have approved the final version of this article.

**Institutional review board statement:** The study was reviewed and approved by the Institutional Review Board at Tumor Hospital Affiliated to Xinjiang Medical University.



**Clinical trial registration statement:** The research registration number is 8823.

**Informed consent statement:** All participants provided written informed consent.

**Conflict-of-interest statement:** All the authors report no relevant conflicts of interest for this article.

**Data sharing statement:** No additional data are available.

**CONSORT 2010 statement:** The authors have read the CONSORT 2010 statement, and the manuscript was prepared and revised according to the CONSORT 2010 statement.

**Open-Access:** This article is an open-access article that was selected by an in-house editor and fully peer-reviewed by external reviewers. It is distributed in accordance with the Creative Commons Attribution NonCommercial (CC BY-NC 4.0) license, which permits others to distribute, remix, adapt, build upon this work non-commercially, and license their derivative works on different terms, provided the original work is properly cited and the use is non-commercial. See: <https://creativecommons.org/licenses/by-nc/4.0/>

**Country/Territory of origin:** China

**ORCID number:** Ming-Hui Li 0009-0001-3514-5643; Sun-Yan Zhang 0009-0003-6411-1973.

**S-Editor:** Wang JJ

**L-Editor:** A

**P-Editor:** Wang JJ

## REFERENCES

- 1 Sung H, Ferlay J, Siegel RL, Laversanne M, Soerjomataram I, Jemal A, Bray F. Global Cancer Statistics 2020: GLOBOCAN Estimates of Incidence and Mortality Worldwide for 36 Cancers in 185 Countries. *CA Cancer J Clin* 2021; **71**: 209-249 [PMID: 33538338 DOI: 10.3322/caac.21660]
- 2 Benson AB, Venook AP, Al-Hawary MM, Cederquist L, Chen YJ, Ciombor KK, Cohen S, Cooper HS, Deming D, Engstrom PF, Grem JL, Grothey A, Hochster HS, Hoffe S, Hunt S, Kamel A, Kirilcuk N, Krishnamurthi S, Messersmith WA, Meyerhardt J, Mulcahy MF, Murphy JD, Nurkin S, Saltz L, Sharma S, Shibata D, Skibber JM, Sofocleous CT, Stoffel EM, Stotsky-Himelfarb E, Willett CG, Wuthrick E, Gregory KM, Gurski L, Freedman-Cass DA. Rectal Cancer, Version 2.2018, NCCN Clinical Practice Guidelines in Oncology. *J Natl Compr Canc Netw* 2018; **16**: 874-901 [PMID: 30006429 DOI: 10.6004/jnccn.2018.0061]
- 3 Goiffon RJ, O'Shea A, Harisinghani MG. Advances in radiological staging of colorectal cancer. *Clin Radiol* 2021; **76**: 879-888 [PMID: 34243943 DOI: 10.1016/j.crad.2021.06.005]
- 4 Carmeliet P, Jain RK. Angiogenesis in cancer and other diseases. *Nature* 2000; **407**: 249-257 [PMID: 11001068 DOI: 10.1038/35025220]
- 5 Ferrara N, Gerber HP, LeCouter J. The biology of VEGF and its receptors. *Nat Med* 2003; **9**: 669-676 [PMID: 12778165 DOI: 10.1038/nm0603-669]
- 6 Weidner N. Current pathologic methods for measuring intratumoral microvessel density within breast carcinoma and other solid tumors. *Breast Cancer Res Treat* 1995; **36**: 169-180 [PMID: 8534865 DOI: 10.1007/BF00666038]
- 7 Blomley MJ, Cooke JC, Unger EC, Monaghan MJ, Cosgrove DO. Microbubble contrast agents: a new era in ultrasound. *BMJ* 2001; **322**: 1222-1225 [PMID: 11358777 DOI: 10.1136/bmj.322.7296.1222]
- 8 Dietrich CF, Averkiou M, Nielsen MB, Barr RG, Burns PN, Calliada F, Cantisani V, Choi B, Chammas MC, Clevert DA, Claudon M, Correias JM, Cui XW, Cosgrove D, D'Onofrio M, Dong Y, Eisenbrey J, Fontanilla T, Gilja OH, Ignee A, Jenssen C, Kono Y, Kudo M, Lassau N, Lyshchik A, Franca Meloni M, Moriyasu F, Nolsøe C, Piscaglia F, Radzina M, Saftoiu A, Sidhu PS, Sporea I, Schreiber-Dietrich D, Sirlin CB, Stanczak M, Weskott HP, Wilson SR, Willmann JK, Kim TK, Jang HJ, Vezeridis A, Westerway S. How to perform Contrast-Enhanced Ultrasound (CEUS). *Ultrasound Int Open* 2018; **4**: E2-E15 [PMID: 29423461 DOI: 10.1055/s-0043-123931]
- 9 Dietrich CF, Ignee A, Frey H. Contrast-enhanced endoscopic ultrasound with low mechanical index: a new technique. *Z Gastroenterol* 2005; **43**: 1219-1223 [PMID: 16267707 DOI: 10.1055/s-2005-858662]
- 10 Claudon M, Dietrich CF, Choi BI, Cosgrove DO, Kudo M, Nolsøe CP, Piscaglia F, Wilson SR, Barr RG, Chammas MC, Chaubal NG, Chen MH, Clevert DA, Correias JM, Ding H, Forsberg F, Fowlkes JB, Gibson RN, Goldberg BB, Lassau N, Leen EL, Mattrey RF, Moriyasu F, Solbiati L, Weskott HP, Xu HX. Guidelines and good clinical practice recommendations for contrast enhanced ultrasound (CEUS) in the liver--update 2012: a WFUMB-EFSUMB initiative in cooperation with representatives of AFSUMB, AIUM, ASUM, FLAUS and ICUS. *Ultraschall Med* 2013; **34**: 11-29 [PMID: 23129518 DOI: 10.1055/s-0032-1325499]
- 11 Quaiia E. The real capabilities of contrast-enhanced ultrasound in the characterization of solid focal liver lesions. *Eur Radiol* 2011; **21**: 457-462 [PMID: 21107578 DOI: 10.1007/s00330-010-2007-0]
- 12 Wei K, Le E, Bin JP, Coggins M, Thorpe J, Kaul S. Quantification of renal blood flow with contrast-enhanced ultrasound. *J Am Coll Cardiol* 2001; **37**: 1135-1140 [PMID: 11263620 DOI: 10.1016/s0735-1097(00)01210-9]
- 13 Senior R, Becher H, Monaghan M, Agati L, Zamorano J, Vanoverschelde JL, Nihoyannopoulos P. Contrast echocardiography: evidence-based recommendations by European Association of Echocardiography. *Eur J Echocardiogr* 2009; **10**: 194-212 [PMID: 19270054 DOI: 10.1093/ejehocardiography/jeq005]
- 14 Wang S, Yang W, Zhang H, Xu Q, Yan K. The Role of Contrast-Enhanced Ultrasound in Selection Indication and Improveing Diagnosis for Transthoracic Biopsy in Peripheral Pulmonary and Mediastinal Lesions. *Biomed Res Int* 2015; **2015**: 231782 [PMID: 26090391 DOI: 10.1155/2015/231782]
- 15 Cartana ET, Gheonea DI, Cherciu IF, Streata I, Uscatu CD, Nicoli ER, Ioana M, Pirici D, Georgescu CV, Alexandru DO, Şurlin V, Gruionu

- G, Săftoiu A. Assessing tumor angiogenesis in colorectal cancer by quantitative contrast-enhanced endoscopic ultrasound and molecular and immunohistochemical analysis. *Endosc Ultrasound* 2018; **7**: 175-183 [PMID: [28685747](#) DOI: [10.4103/eus.eus\\_7\\_17](#)]
- 16 **Lassau N**, Chebil M, Chami L, Bidault S, Girard E, Roche A. Dynamic contrast-enhanced ultrasonography (DCE-US): a new tool for the early evaluation of antiangiogenic treatment. *Target Oncol* 2010; **5**: 53-58 [PMID: [20379790](#) DOI: [10.1007/s11523-010-0136-7](#)]
  - 17 **Lassau N**, Bonastre J, Kind M, Vilgrain V, Lacroix J, Cuinet M, Taieb S, Aziza R, Sarran A, Labbe-Devilliers C, Gallix B, Lucidarme O, Ptak Y, Rocher L, Caquot LM, Chagnon S, Marion D, Luciani A, Feutray S, Uzan-Augui J, Coiffier B, Benastou B, Koscielny S. Validation of dynamic contrast-enhanced ultrasound in predicting outcomes of antiangiogenic therapy for solid tumors: the French multicenter support for innovative and expensive techniques study. *Invest Radiol* 2014; **49**: 794-800 [PMID: [24991866](#) DOI: [10.1097/RLI.0000000000000085](#)]
  - 18 **Lassau N**, Koscielny S, Chami L, Chebil M, Benastou B, Roche A, Ducreux M, Malka D, Boige V. Advanced hepatocellular carcinoma: early evaluation of response to bevacizumab therapy at dynamic contrast-enhanced US with quantification--preliminary results. *Radiology* 2011; **258**: 291-300 [PMID: [20980447](#) DOI: [10.1148/radiol.10091870](#)]
  - 19 **Wang Y**, Li L, Wang YX, Cui NY, Zou SM, Zhou CW, Jiang YX. Time-intensity curve parameters in rectal cancer measured using endorectal ultrasonography with sterile coupling gels filling the rectum: correlations with tumor angiogenesis and clinicopathological features. *Biomed Res Int* 2014; **2014**: 587806 [PMID: [24900973](#) DOI: [10.1155/2014/587806](#)]
  - 20 **Lassau N**, Lamuraglia M, Chami L, Leclère J, Bonvalot S, Terrier P, Roche A, Le Cesne A. Gastrointestinal stromal tumors treated with imatinib: monitoring response with contrast-enhanced sonography. *AJR Am J Roentgenol* 2006; **187**: 1267-1273 [PMID: [17056915](#) DOI: [10.2214/AJR.05.1192](#)]
  - 21 **Albrecht T**, Blomley M, Bolondi L, Claudon M, Correas JM, Cosgrove D, Greiner L, Jäger K, Jong ND, Leen E, Lencioni R, Lindsell D, Martegani A, Solbiati L, Thorelius L, Tranquart F, Weskott HP, Whittingham T; EFSUMB Study Group. Guidelines for the use of contrast agents in ultrasound. January 2004. *Ultraschall Med* 2004; **25**: 249-256 [PMID: [15300497](#) DOI: [10.1055/s-2004-813245](#)]
  - 22 **Lamuraglia M**, Escudier B, Chami L, Schwartz B, Leclère J, Roche A, Lassau N. To predict progression-free survival and overall survival in metastatic renal cancer treated with sorafenib: pilot study using dynamic contrast-enhanced Doppler ultrasound. *Eur J Cancer* 2006; **42**: 2472-2479 [PMID: [16965911](#) DOI: [10.1016/j.ejca.2006.04.023](#)]
  - 23 **Des Guetz G**, Uzzan B, Nicolas P, Cucherat M, Morere JF, Benamouzig R, Breau JL, Perret GY. Microvessel density and VEGF expression are prognostic factors in colorectal cancer. Meta-analysis of the literature. *Br J Cancer* 2006; **94**: 1823-1832 [PMID: [16773076](#) DOI: [10.1038/sj.bjc.6603176](#)]
  - 24 **Gao J**, Knutsen A, Arbmán G, Carstensen J, Frånlund B, Sun XF. Clinical and biological significance of angiogenesis and lymphangiogenesis in colorectal cancer. *Dig Liver Dis* 2009; **41**: 116-122 [PMID: [19038587](#) DOI: [10.1016/j.dld.2008.07.315](#)]
  - 25 **Piscaglia F**, Nolsøe C, Dietrich CF, Cosgrove DO, Gilja OH, Bachmann Nielsen M, Albrecht T, Barozzi L, Bertolotto M, Catalano O, Claudon M, Clevert DA, Correas JM, D'Onofrio M, Drudi FM, Eyding J, Giovannini M, Hocke M, Ignee A, Jung EM, Klausner AS, Lassau N, Leen E, Mathis G, Săftoiu A, Seidel G, Sidhu PS, ter Haar G, Timmerman D, Weskott HP. The EFSUMB Guidelines and Recommendations on the Clinical Practice of Contrast Enhanced Ultrasound (CEUS): update 2011 on non-hepatic applications. *Ultraschall Med* 2012; **33**: 33-59 [PMID: [21874631](#) DOI: [10.1055/s-0031-1281676](#)]
  - 26 **Correas JM**, Bridal L, Lesavre A, Méjean A, Claudon M, Hélénon O. Ultrasound contrast agents: properties, principles of action, tolerance, and artifacts. *Eur Radiol* 2001; **11**: 1316-1328 [PMID: [11519538](#) DOI: [10.1007/s003300100940](#)]
  - 27 **Wilson SR**, Burns PN. Microbubble-enhanced US in body imaging: what role? *Radiology* 2010; **257**: 24-39 [PMID: [20851938](#) DOI: [10.1148/radiol.10091210](#)]
  - 28 **Strobel D**, Seitz K, Blank W, Schuler A, Dietrich C, von Herbay A, Friedrich-Rust M, Kunze G, Becker D, Will U, Kratzer W, Albert FW, Pachmann C, Dirks K, Strunk H, Greis C, Bernatik T. Contrast-enhanced ultrasound for the characterization of focal liver lesions--diagnostic accuracy in clinical practice (DEGUM multicenter trial). *Ultraschall Med* 2008; **29**: 499-505 [PMID: [19241506](#) DOI: [10.1055/s-2008-1027806](#)]
  - 29 **Piscaglia F**, Bolondi L; Italian Society for Ultrasound in Medicine and Biology (SIUMB) Study Group on Ultrasound Contrast Agents. The safety of Sonovue in abdominal applications: retrospective analysis of 23188 investigations. *Ultrasound Med Biol* 2006; **32**: 1369-1375 [PMID: [16965977](#) DOI: [10.1016/j.ultrasmedbio.2006.05.031](#)]
  - 30 **Puli SR**, Reddy JB, Bechtold ML, Choudhary A, Antillon MR, Brugge WR. Accuracy of endoscopic ultrasound to diagnose nodal invasion by rectal cancers: a meta-analysis and systematic review. *Ann Surg Oncol* 2009; **16**: 1255-1265 [PMID: [19219506](#) DOI: [10.1245/s10434-009-0337-4](#)]
  - 31 **Greis C**. Technology overview: SonoVue (Bracco, Milan). *Eur Radiol* 2004; **14** Suppl 8: P11-P15 [PMID: [15700328](#)]
  - 32 **Rappeport ED**, Loft A, Berthelsen AK, von der Recke P, Larsen PN, Mogensen AM, Wettergren A, Rasmussen A, Hillingsøe J, Kirkegaard P, Thomsen C. Contrast-enhanced FDG-PET/CT vs. SPIO-enhanced MRI vs. FDG-PET vs. CT in patients with liver metastases from colorectal cancer: a prospective study with intraoperative confirmation. *Acta Radiol* 2007; **48**: 369-378 [PMID: [17453514](#) DOI: [10.1080/02WJGS-15-20420701294560](#)]
  - 33 **Quaia E**, Calliada F, Bertolotto M, Rossi S, Garioni L, Rosa L, Pozzi-Mucelli R. Characterization of focal liver lesions with contrast-specific US modes and a sulfur hexafluoride-filled microbubble contrast agent: diagnostic performance and confidence. *Radiology* 2004; **232**: 420-430 [PMID: [15286314](#) DOI: [10.1148/radiol.2322031401](#)]
  - 34 **Sidhu PS**, Cantisani V, Dietrich CF, Gilja OH, Săftoiu A, Bartels E, Bertolotto M, Calliada F, Clevert DA, Cosgrove D, Deganello A, D'Onofrio M, Drudi FM, Freeman S, Harvey C, Jenssen C, Jung EM, Klausner AS, Lassau N, Meloni MF, Leen E, Nicolau C, Nolsøe C, Piscaglia F, Prada F, Prosch H, Radzina M, Savelli L, Weskott HP, Wijkstra H. The EFSUMB Guidelines and Recommendations for the Clinical Practice of Contrast-Enhanced Ultrasound (CEUS) in Non-Hepatic Applications: Update 2017 (Long Version). *Ultraschall Med* 2018; **39**: e2-e44 [PMID: [29510439](#) DOI: [10.1055/a-0586-1107](#)]
  - 35 **Rubaltelli L**, Khadivi Y, Tregnaghi A, Stramare R, Ferro F, Borsato S, Fiocco U, Adami F, Rossi CR. Evaluation of lymph node perfusion using continuous mode harmonic ultrasonography with a second-generation contrast agent. *J Ultrasound Med* 2004; **23**: 829-836 [PMID: [15244307](#) DOI: [10.7863/jum.2004.23.6.829](#)]
  - 36 **Liu LN**, Xu HX, Lu MD, Xie XY, Wang WP, Hu B, Yan K, Ding H, Tang SS, Qian LX, Luo BM, Wen YL. Contrast-enhanced ultrasound in the diagnosis of gallbladder diseases: a multi-center experience. *PLoS One* 2012; **7**: e48371 [PMID: [23118996](#) DOI: [10.1371/journal.pone.0048371](#)]
  - 37 **Sauer R**, Liersch T, Merkel S, Fietkau R, Hohenberger W, Hess C, Becker H, Raab HR, Villanueva MT, Witzigmann H, Wittekind C, Beissbarth T, Rödel C. Preoperative *versus* postoperative chemoradiotherapy for locally advanced rectal cancer: results of the German CAO/AIO/AIO-94 randomized phase III trial after a median follow-up of 11 years. *J Clin Oncol* 2012; **30**: 1926-1933 [PMID: [22529255](#) DOI: [10.1200/JCO.2011.39.8292](#)]

[10.1200/JCO.2011.40.1836](https://doi.org/10.1200/JCO.2011.40.1836)]

- 38 **Giesel FL**, Choyke PL, Mehndiratta A, Zechmann CM, von Tengg-Kobligh H, Kayser K, Bischoff H, Hintze C, Delorme S, Weber MA, Essig M, Kauczor HU, Knopp MV. Pharmacokinetic analysis of malignant pleural mesothelioma-initial results of tumor microcirculation and its correlation to microvessel density (CD-34). *Acad Radiol* 2008; **15**: 563-570 [PMID: [18423312](https://pubmed.ncbi.nlm.nih.gov/18423312/) DOI: [10.1016/j.acra.2007.12.014](https://doi.org/10.1016/j.acra.2007.12.014)]



Published by **Baishideng Publishing Group Inc**  
7041 Koll Center Parkway, Suite 160, Pleasanton, CA 94566, USA

**Telephone:** +1-925-3991568

**E-mail:** [bpgoffice@wjgnet.com](mailto:bpgoffice@wjgnet.com)

**Help Desk:** <https://www.f6publishing.com/helpdesk>

<https://www.wjgnet.com>

