

World Journal of *Clinical Cases*

World J Clin Cases 2023 July 16; 11(20): 4734-4965



MINIREVIEWS

- 4734 Inflammatory myofibroblastic tumor of the distal common bile duct: Literature review with focus on pathological examination
Cordier F, Hoorens A, Ferdinande L, Van Dorpe J, Creytens D
- 4740 Probiotics and autoprobiotics for treatment of *Helicobacter pylori* infection
Baryshnikova NV, Ilina AS, Ermolenko EI, Uspenskiy YP, Suvorov AN
- 4752 Plant-based diet and its effect on coronary artery disease: A narrative review
Mehta P, Tawfeeq S, Padte S, Sunasra R, Desai H, Surani S, Kashyap R

ORIGINAL ARTICLE

Clinical and Translational Research

- 4763 Identification of survival-associated biomarkers based on three datasets by bioinformatics analysis in gastric cancer
Yin LK, Yuan HY, Liu JJ, Xu XL, Wang W, Bai XY, Wang P
- 4788 High expression of autophagy-related gene *EIF4EBP1* could promote tamoxifen resistance and predict poor prognosis in breast cancer
Yang S, Hui TL, Wang HQ, Zhang X, Mi YZ, Cheng M, Gao W, Geng CZ, Li SN
- 4800 Delineation of fatty acid metabolism in gastric cancer: Therapeutic implications
Fu Y, Wang B, Fu P, Zhang L, Bao Y, Gao ZZ
- 4814 Mechanical analysis of the femoral neck dynamic intersection system with different nail angles and clinical applications
Wang Y, Ma JX, Bai HH, Lu B, Sun L, Jin HZ, Ma XL

Retrospective Cohort Study

- 4824 Development and validation of a predictive model for spinal fracture risk in osteoporosis patients
Lin XM, Shi ZC

Retrospective Study

- 4833 Risk prediction model for distinguishing Gram-positive from Gram-negative bacteremia based on age and cytokine levels: A retrospective study
Zhang W, Chen T, Chen HJ, Chen N, Xing ZX, Fu XY
- 4843 Sudden death in the southern region of Saudi Arabia: A retrospective study
Al-Emam AMA, Dajam A, Alrajhi M, Alfaiji W, Al-Shraim M, Helaly AM

- 4852** Diagnostic value of preoperative examination for evaluating margin status in breast cancer

Liu P, Zhao Y, Rong DD, Li KF, Wang YJ, Zhao J, Kang H

Prospective Study

- 4865** Defining the awareness and attitude of the clinicians through pharmacovigilance in Turkey

Aydin OC, Aydin S, Guney HZ

- 4874** Predictive value of the trans-perineal three-dimensional ultrasound measurement of the pubic arch angle for vaginal delivery

Liang ZW, Gao WL

CASE REPORT

- 4883** Microwave ablation of solitary T1N0M0 papillary thyroid carcinoma: A case report

Dionísio T, Lajut L, Sousa F, Violante L, Sousa P

- 4890** Acute spinal subdural haematoma complicating a posterior spinal instrumented fusion for congenital scoliosis: A case report

Michon du Marais G, Tabard-Fougère A, Dayer R

- 4897** Subacute osteomyelitis due to *Staphylococcus caprae* in a teenager: A case report and review of the literature

Vazquez O, De Marco G, Gavira N, Habre C, Bartucz M, Steiger CN, Dayer R, Ceroni D

- 4903** ABCB4 gene mutation-associated cirrhosis with systemic amyloidosis: A case report

Cheng N, Qin YJ, Zhang Q, Li H

- 4912** Metagenomic next-generation sequencing in the diagnosis of neurocysticercosis: A case report

Xu WB, Fu JJ, Yuan XJ, Xian QJ, Zhang LJ, Song PP, You ZQ, Wang CT, Zhao QG, Pang F

- 4920** Drug-coated balloons for treating *de novo* lesions in large coronary vessels: A case report

Zhang ZQ, Qin YR, Yin M, Chen XH, Chen L, Liang WY, Wei XQ

- 4926** Pretreatment with a modified St. Thomas' solution in patients with severe upper limb injuries: Four case reports

Sun ZY, Li LY, Xing JX, Tong LC, Li Y

- 4932** Unexpected diffuse lung lesions in a patient with pulmonary alveolar proteinosis: A case report

Jian L, Zhao QQ

- 4937** Contrast-induced ischemic colitis following coronary angiography: A case report

Qiu H, Li WP

- 4944** Posterior pedicle screw fixation combined with local steroid injections for treating axial eosinophilic granulomas and atlantoaxial dislocation: A case report

Tu CQ, Chen ZD, Yao XT, Jiang YJ, Zhang BF, Lin B

- 4956** Antithrombin III deficiency in a patient with recurrent venous thromboembolism: A case report

Luo JQ, Mao SS, Chen JY, Ke XY, Zhu YF, Huang W, Sun HM, Liu ZJ

- 4961** Laryngospasm as an uncommon presentation in a patient with anti-N-methyl-D-aspartate receptor encephalitis: A case report

Wang L, Su HJ, Song GJ

ABOUT COVER

Editorial Board Member of *World Journal of Clinical Cases*, Kengo Moriyama, MD, PhD, Associate Professor, Department of Clinical Health Science, Tokai University School of Medicine, Tokai University Hachioji Hospital, Hachioji 1838, Tokyo, Japan. osaru3moving@gmail.com

AIMS AND SCOPE

The primary aim of *World Journal of Clinical Cases* (WJCC, *World J Clin Cases*) is to provide scholars and readers from various fields of clinical medicine with a platform to publish high-quality clinical research articles and communicate their research findings online.

WJCC mainly publishes articles reporting research results and findings obtained in the field of clinical medicine and covering a wide range of topics, including case control studies, retrospective cohort studies, retrospective studies, clinical trials studies, observational studies, prospective studies, randomized controlled trials, randomized clinical trials, systematic reviews, meta-analysis, and case reports.

INDEXING/ABSTRACTING

The WJCC is now abstracted and indexed in Science Citation Index Expanded (SCIE, also known as SciSearch®), Journal Citation Reports/Science Edition, Current Contents®/Clinical Medicine, PubMed, PubMed Central, Reference Citation Analysis, China National Knowledge Infrastructure, China Science and Technology Journal Database, and Superstar Journals Database. The 2023 Edition of Journal Citation Reports® cites the 2022 impact factor (IF) for WJCC as 1.1; IF without journal self cites: 1.1; 5-year IF: 1.3; Journal Citation Indicator: 0.26; Ranking: 133 among 167 journals in medicine, general and internal; and Quartile category: Q4.

RESPONSIBLE EDITORS FOR THIS ISSUE

Production Editor: Hua-Ge Yin; Production Department Director: Xu Guo; Editorial Office Director: Jin-Lei Wang.

NAME OF JOURNAL

World Journal of Clinical Cases

ISSN

ISSN 2307-8960 (online)

LAUNCH DATE

April 16, 2013

FREQUENCY

Thrice Monthly

EDITORS-IN-CHIEF

Bao-Gan Peng, Jerzy Tadeusz Chudek, George Kontogeorgos, Maurizio Serati, Ja Hyeon Ku

EDITORIAL BOARD MEMBERS

<https://www.wjgnet.com/2307-8960/editorialboard.htm>

PUBLICATION DATE

July 16, 2023

COPYRIGHT

© 2023 Baishideng Publishing Group Inc

INSTRUCTIONS TO AUTHORS

<https://www.wjgnet.com/bpg/gerinfo/204>

GUIDELINES FOR ETHICS DOCUMENTS

<https://www.wjgnet.com/bpg/GerInfo/287>

GUIDELINES FOR NON-NATIVE SPEAKERS OF ENGLISH

<https://www.wjgnet.com/bpg/gerinfo/240>

PUBLICATION ETHICS

<https://www.wjgnet.com/bpg/GerInfo/288>

PUBLICATION MISCONDUCT

<https://www.wjgnet.com/bpg/gerinfo/208>

ARTICLE PROCESSING CHARGE

<https://www.wjgnet.com/bpg/gerinfo/242>

STEPS FOR SUBMITTING MANUSCRIPTS

<https://www.wjgnet.com/bpg/GerInfo/239>

ONLINE SUBMISSION

<https://www.f6publishing.com>



Prospective Study

Predictive value of the trans-perineal three-dimensional ultrasound measurement of the pubic arch angle for vaginal delivery

Zhu-Wei Liang, Wan-Li Gao

Specialty type: Obstetrics and gynecology

Provenance and peer review: Unsolicited article; Externally peer reviewed.

Peer-review model: Single blind

Peer-review report's scientific quality classification

Grade A (Excellent): 0
Grade B (Very good): B
Grade C (Good): C
Grade D (Fair): 0
Grade E (Poor): 0

P-Reviewer: Hatipoglu S, Turkey;
Martín Del Olmo JC, Spain

Received: May 25, 2023

Peer-review started: May 25, 2023

First decision: June 13, 2023

Revised: June 16, 2023

Accepted: June 26, 2023

Article in press: June 26, 2023

Published online: July 16, 2023



Zhu-Wei Liang, Wan-Li Gao, Department of Obstetrics and Gynecology, Beijing Tiantan Hospital, Beijing 100070, China

Corresponding author: Wan-Li Gao, BMed, Professor, Department of Obstetrics and Gynecology, Beijing Tiantan Hospital, No. 119 South Fourth Ring West Road, Fengtai District, Beijing 100070, China. gaolisa2004@mail.ccmu.edu.cn

Abstract

BACKGROUND

Numerous variables are linked to the success of vaginal delivery, including the subpubic arch angle (SPAA) during labor, the importance of which has not yet been fully elucidated.

AIM

To examine the SPAA distributional characteristics and to ascertain SPAA's ability to predict the type and duration of labor.

METHODS

We determined the SPAA and analyzed the corresponding data. We also evaluated the relationship between the SPAA and the mode of delivery and the duration of labor by regression. The present study comprised a total of 301 pregnant women who had given birth at Beijing Tiantan Hospital of the Capital Medical University between January and December of 2021.

RESULTS

Our analysis of 301 pregnant women revealed that the SPAA measured using three-dimensional trans-perineal ultrasound had a minimum angle of 81° and a maximum angle of 122.2°. The angle in the normal vaginal delivery group was greater than that in the labor cesarean group ($P = 0.000$). The SPAA was a highly significant positive predictor of normal vaginal delivery ($P = 0.000$) with an area under the curve of 0.782 ($P = 0.000$; 95%CI: 0.717–0.848). We found the length of the second stage of labor to be positively influenced by the SPAA using linear regression analysis ($P = 0.045$).

CONCLUSION

The SPAA was a highly significant positive predictor of normal vaginal delivery. The length of the second stage of labor and normal vaginal birth were predicted by SPAA.

Key Words: Three-dimensional ultrasound; Subpubic arch angle; Trans-perineal; Vaginal delivery

©The Author(s) 2023. Published by Baishideng Publishing Group Inc. All rights reserved.

Core Tip: We adopted three-dimensional trans-perineal ultrasound to examine the subpubic arch angle (SPAA) distributional characteristics, and to ascertain the SPAA's ability to predict the length of the second stage of labor and normal vaginal birth. We herein provided a noninvasive, low-cost tool to reduce the number of emergency cesarean deliveries conducted during labor.

Citation: Liang ZW, Gao WL. Predictive value of the trans-perineal three-dimensional ultrasound measurement of the pubic arch angle for vaginal delivery. *World J Clin Cases* 2023; 11(20): 4874-4882

URL: <https://www.wjgnet.com/2307-8960/full/v11/i20/4874.htm>

DOI: <https://dx.doi.org/10.12998/wjcc.v11.i20.4874>

INTRODUCTION

One of the key concerns of obstetricians and laboring mothers is predicting the results of labor. The discomfort experienced by pregnant women unable to give birth vaginally can be lessened by attenuating the effects of obstetricians' differing degrees of experience with labor outcomes. Additionally, elective cesarean deliveries can be performed to end a pregnancy before labor begins, effectively lowering the rate of emergency cesarean deliveries.

Numerous variables-including a mother's age, height, body mass index (BMI), weight gain during pregnancy, newborn weight, and pelvic size-are linked to a vaginal delivery's success. Due to its ambiguity, pelvic measurement is currently relegated to a lesser position in several obstetric textbooks[1]. Some argue that pelvic measurement should be abandoned entirely. However, some obstetricians have found that specific pelvic measurement indicators—including the subpubic arch angle (SPAA) are crucial to labor outcomes. A few studies have confirmed this observation[2-4]. An essential but underutilized signal in pelvic measurements is the SPAA, which serves as a gauge of the pelvic outlet's anterior triangle's size. Women with small SPAAs frequently have protracted or stalled labor that often requires forceps, fetal head extraction, or emergency cesarean section, which significantly increases the risk to both the mother and fetus.

Previous clinical and empirical studies have not fully elucidated the SPAA's importance in labor, possibly due to traditional measurement methods[5]. For example, obstetricians often use a protractor for manual measurement. Recently, new methods-including X-rays, subpubic arch angle (SPAA), magnetic resonance imaging (MRI), and ultrasonography-have been applied to measuring the SPAA. Ultrasonography's advantages in pelvic measurement are becoming increasingly evident. Ultrasound measurement of the SPAA before delivery has a relatively low technical requirement, but can accurately and objectively reflect the pelvic outlet without individual bias. While X-rays avoid fetal head obstruction and CT offers higher accuracy, both use radiation, which is unacceptable to most patients. MRI is radiation-free and accurate, but more expensive and less accessible.

Thus, this study aimed to explore three-dimensional (3D) ultrasound measurement of the SPAA as a noninvasive, low-risk, highly accurate method to predict the delivery mode before labor and investigate the relationship between the SPAA, vaginal delivery, and labor duration.

MATERIALS AND METHODS

Study design and study population

For this study we selected 301 mothers, all of whom delivered at the Obstetrics Department of Beijing Tiantan Hospital, Capital Medical University, during the period January–December of 2021. The maternal enrollment criteria were gestational week > 36 wk, singleton pregnancy, and primigravida. All pregnant women participating in this study signed an informed consent form approved by our hospital Ethics Committee.

The SPAA of the enrolled pregnant women was measured at 36-38 wk of gestation and three measurements were completed, each with an interval of one week. The mean of the three measurements was then used as the final SPAA. We also conducted an evaluation of the delivery mode at 36-38 wk of gestation. If the woman was deemed suitable for vaginal delivery, a routine ultrasound was performed and the SPAA was measured. No specific interventions were performed either during or after delivery regarding the mode of delivery. Following delivery, patients were categorized into four groups based on their respective modes of delivery. The antepartum cesarean section group referred to women who underwent surgical termination of their pregnancies prior to entering labor; the labor cesarean section group referred to those who could not continue vaginal delivery during labor and underwent emergency cesarean section; and the remaining women were in the vaginal delivery group that was subdivided into a normal vaginal delivery group (*i.e.*, pregnant women who underwent natural delivery without forceps assistance), and a forceps group (*i.e.* pregnant women who experienced forceps delivery during labor). In cases where a pregnant woman experiences a significant complication

during the second stage of labor necessitating urgent delivery of the fetus, forceps are typically employed to assist with delivery. Unfortunately, our hospital does not currently possess any fetal head extraction devices.

The measurement of the SPAA was performed by an established ultrasonographer using a General Electric Company Voluson E10 system with a 3–5-MHz transabdominal convex probe. The measurements were conducted by adopting the method used in the study by Choi *et al*[6]. This measurement was performed with the pregnant woman emptying her bladder, in a supine position, and with her legs straight up and as relaxed as possible. A glove was placed on the surface of the probe and the gel was applied and placed laterally on the vulva of the pregnant woman. The labia were gently separated to obtain a sagittal view of the pelvic floor. At this point, the pubic symphysis and urethra were located in front of the view, and the anus was located posteriorly. The midpoint of the inferior border of the pubic symphysis was then taken as a reference point and the axial plane was rotated until the median sagittal plane appeared. At this point, the full length of the descending pubic symphysis could be observed, and its angle was then measured. The 3D ultrasound measurements of one of the patients participating in the study are shown in [Figure 1](#).

Data were collected in two categories for all pregnant women. The first category was general maternal information that included maternal age, height, gestational week at delivery, BMI and weight gain (pre-delivery weight minus first pregnancy check-up weight), and neonatal weight. The second category encompassed data on birth-related outcomes such as the length of the first stage of labor and the length of the second stage of labor in the normal vaginal delivery group and in the forceps group.

Statistical analysis

The data were statistically processed using SPSS 26. Our statistical methods entailed the distribution of the SPAA for all the mothers, which was expressed as a histogram with the SPAA distributions for the above four groups expressed as a box plot. The test of variability between the data from each group was calculated using the between-subjects effects test, and for the test of differences between the two groups we applied multiple comparisons in an LSD post hoc test. Logistic regression analysis was exploited to examine the predictive effects of the SPAA and other variables (height, body mass index, weight gain, and neonatal weight) on vaginal delivery, and the area under the curve (AUC) for the SPAA was used to evaluate the discriminatory ability of the predictive model; the Hosmer-Lemeshow goodness-of-fit test was then executed to evaluate the calibration of the model. A linear regression method was applied to analyze the relationship between the SPAA with respect to the length of the first stage of labor in women with spontaneous delivery (the normal vaginal delivery and forceps groups) and its relationship with the length of the second stage of labor in the normal vaginal delivery group. $P < 0.05$ was considered to constitute a statistically significant difference.

RESULTS

General information

A total of 301 pregnant women were assigned to this study, and the overall and descriptive statistics (mean \pm SD) of the measured variables in each group are shown in [Table 1](#). The antepartum cesarean section group included 82 cases. Antepartum cesarean delivery is recommended in cases of fetal distress diagnosed by amniotic fluid III or fetal heart abnormalities, failed induction of labor, and macrosomia. The labor cesarean section group had 49 cases. The normal vaginal delivery group included 155 cases. The forceps group had 15 cases. We observed significant differences in pubic arch angle ($P = 0.000$), body mass index ($P = 0.001$), and newborn weight ($P = 0.000$) among the four groups of pregnant women, but not in any other data. Weight was higher in the surgical section group than in the vaginal delivery group, and neonatal weight was higher in the labor cesarean section and forceps groups than in the vaginal delivery and antepartum cesarean section groups.

Distribution of the SPAA and comparison among groups

The distribution of the SPAA for all pregnant women and in each group are depicted in [Figures 2 and 3](#). The data show a basically normal distribution, with a minimum angle of 81° and a maximum of 122.2° . The differences in the SPAAs among the four groups were tested for differences and we noted statistically significant differences ($P = 0.000$). To analyze the differences in the SPAAs among the four groups in detail, a two-by-two comparison was performed, and we ascertained that the angle in the normal vaginal delivery group was larger than that in the labor cesarean group ($P = 0.000$) and that the angle in the labor cesarean group was smaller than that in the forceps group ($P = 0.052$). In addition, the SPAA in the normal vaginal delivery group was smaller than that in the antepartum cesarean delivery group ($P = 0.004$). The remaining potential differences between the normal vaginal aspect group and the forceps group, and between the forceps group and the antepartum cesarean group were not statistically significant ($P = 0.944$ and 0.135).

Predictive effect of the SPAA on the ability to deliver vaginally

To analyze the effect of the SPAA on the ability to deliver vaginally, we excluded the antepartum cesarean delivery group and conducted logistic regression analysis using data from 219 cases in the normal vaginal delivery group, forceps group, and labor cesarean delivery group. Each control variable at the maternal and neonatal levels was also included in the regression equation.

Our results revealed that the SPAA significantly and positively predicted normal vaginal delivery ($P = 0.000$). Age, height, and neonatal weight also positively predicted vaginal delivery ($P = 0.000$, 0.026 , and 0.042) ([Table 2](#)).

Table 1 General information (mean \pm SD) on the sample population and differences among delivery groups

Characteristic	Sample		Mode of delivery				P value
	M	Range	Pre-labor CS (n = 82)	Normal vaginal delivery (n = 155)	Forceps delivery (n = 15)	CS in labor (n = 49)	
SPAA (°)	99.37	81-122.2	101.77 \pm 6.12	99.29 \pm 6.48	99.18 \pm 5.28	95.62 \pm 5.42	0.000
1 st stage of labor (h)	-	-	-	5.93 \pm 3.53	6.23 \pm 3.37	-	-
2 nd stage of labor (h)	-	-	-	0.48 \pm 0.31	0.52 \pm 0.40	-	-
Age (yr)	30.22	21-41	30.67 \pm 3.06	29.76 \pm 2.97	30.33 \pm 2.87	30.88 \pm 3.38	0.059
Height (meters)	1.63	1.50-1.78	1.63 \pm 0.04	1.64 \pm 0.05	1.62 \pm 0.04	1.62 \pm 0.05	0.091
Gestational age at delivery (wk)	39.40	36-41	39.35 \pm 1.10	39.31 \pm 0.97	39.73 \pm 1.16	39.67 \pm 0.97	0.173
BMI (kg/m ²)	27.14	19-38	27.91 \pm 3.45	26.51 \pm 2.76	26.61 \pm 2.57	27.99 \pm 2.56	0.001
Weight gain (kg)	14.05 \pm 6.21	9-52	14.37 \pm 5.21	13.10 \pm 4.12	12.60 \pm 3.07	14.43 \pm 4.59	0.084
Birth weight (g)	3426.13	2500-4500	3496.95 \pm 394.84	3336.86 \pm 344.73	3522.67 \pm 336.99	3560.41 \pm 410.54	0.000

BMI: Body mass index; CS: Cesarean section; SPAA: Subpubic arch angle.

Table 2 Effects of the subpubic arch angle and other factors on the ability to deliver vaginally

Predictors	Odds ratio (95%CI)	P value
Age (yr)	1.13 (1.00-1.27)	0.042
Height (meters)	0.00 (0.00-0.41)	0.026
Gestational age at delivery (wk)	1.27 (0.87-1.84)	0.214
BMI (kg/m ²)	1.11 (0.97-1.26)	0.130
Weight gain (kg)	1.05 (0.97-1.14)	0.256
Birth weight (g)	1.00 (1.001-1.003)	0.000
SPAA (°)	0.90 (0.84-0.95)	0.000

BMI: Body mass index; SPAA: Subpubic arch angle.

The model's predictive-power test showed an AUC for the SPAA of 0.782 > 0.75 ($P = 0.000$; 95%CI: 0.717-0.848) (Figure 4), indicating that the model possessed good discriminatory ability. The Hosmer-Lemeshow goodness-of-fit test showed a Hosmer-Lemeshow $\chi^2 = 6.19$, $P = 0.63 > 0.05$, suggesting that the prediction model reflected favorable calibration ability.

The predictive effect of the SPAA on the duration of labor

To evaluate the relationship between the SPAA and length of labor, we analyzed its relationship with the first stage of labor and the length of the second stage of labor in women who experienced spontaneous delivery (including our normal vaginal delivery and forceps groups, for a total of 170 pregnant women). Each control variable at the maternal and neonatal levels was also included in the regression equation.

When the first stage of labor was the outcome variable, linear regression revealed that only weight gain positively predicted the duration of the first stage of vaginal delivery ($P = 0.025$) (Table 3 for details).

Second, the second stage of labor was not an appropriate variable because it was artificially terminated in the forceps group. Therefore, only the relationship between the length of the second stage of labor (after log conversion) and the SPAA in the normal vaginal delivery group (155 pregnant women) was analyzed (Table 4). Linear regression showed that SPAA positively predicted the length of the second stage of labor ($P = 0.045$). Among other factors, age ($P = 0.039$) and height ($P = 0.013$) positively and negatively predicted the length of second stage of labor, respectively.

Table 3 Predictive effect of the subpubic arch angle with respect to the duration of the first stage of vaginal delivery and other factors

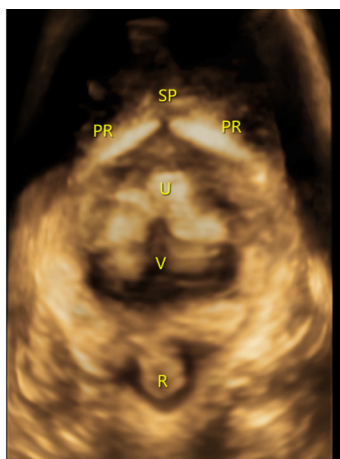
Predictors	B (95%CI)	P value
Age (yr)	-0.02 (-0.21 to 0.16)	0.789
Height (meters)	-0.09 (-17.39 to 4.62)	0.254
Gestational age at delivery (wk)	0.02 (-0.50 to 0.66)	0.785
BMI (kg/m ²)	-0.03 (-0.25 to 0.18)	0.758
Weight gain (kg)	-0.19 (-0.31 to 0.02)	0.025
Birth weight (g)	0.13 (0.000 to 0.003)	0.135
SPAA (°)	0.06 (-0.05 to 0.12)	0.459

BMI: Body mass index; SPAA: Subpubic arch angle.

Table 4 Predictive effect of the subpubic arch angle with respect to the second stage of labor in the normal vaginal delivery group

Predictors	B (95%CI)	P value
Age (yr)	0.17 (0.002 to 0.071)	0.039
Height (meters)	-0.18 (-4.63 to -0.55)	0.013
Gestational age at delivery (wk)	0.02 (-0.10 to 0.13)	0.853
BMI (kg/m ²)	-0.11 (-0.074 to 0.005)	0.087
Weight gain (kg)	0.02 (-0.02 to 0.03)	0.765
Birth weight (g)	0.09 (0.000 to 0.001)	0.316
SPAA (°)	0.13 (-0.001 to 0.03)	0.045

BMI: Body mass index; SPAA: Subpubic arch angle.



DOI: 10.12998/wjcc.v11.i20.4874 Copyright ©The Author(s) 2023.

Figure 1 Three-dimensional measurement of the subpubic arch angle. PR: Pubic rami; U: Urethra; V: Vaginal; SP: Symphysis pubis.

DISCUSSION

In this study we implemented 3D ultrasonographic measurements to analyze the differences in the SPAA among pregnant women experiencing different delivery methods. Our detailed analysis is provided below.

Distribution of the SPAA and possible influencing factors

The subjects in the present study were pregnant Chinese women, and their SPAA data reflected Asian characteristics. The mean SPAA in this population was 99.37°, with a minimum of 81° and a maximum of 122.2°; a vast majority of the

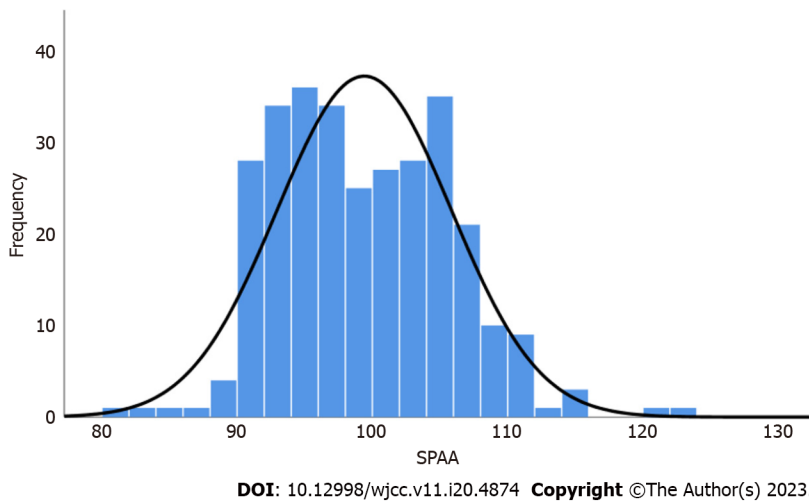


Figure 2 Distribution of the subpubic arch angle. SPAA: Subpubic arch angle.

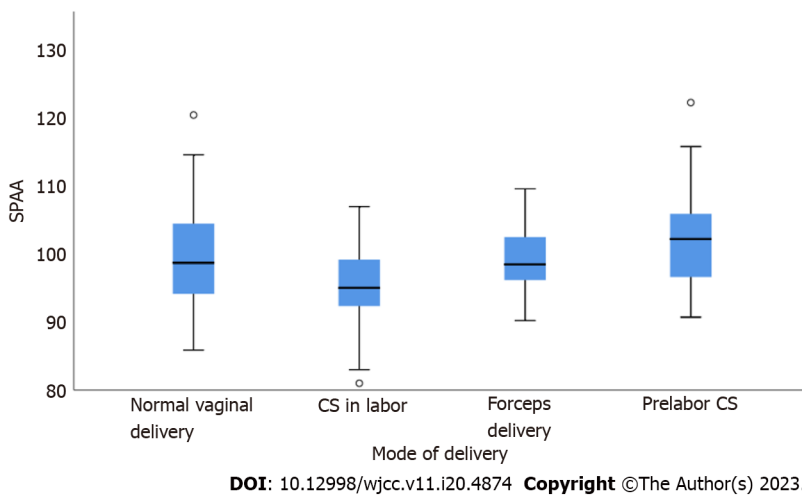


Figure 3 Distribution of the subpubic arch angle in each group. CS: Caesarean section; SPAA: Subpubic arch angle.

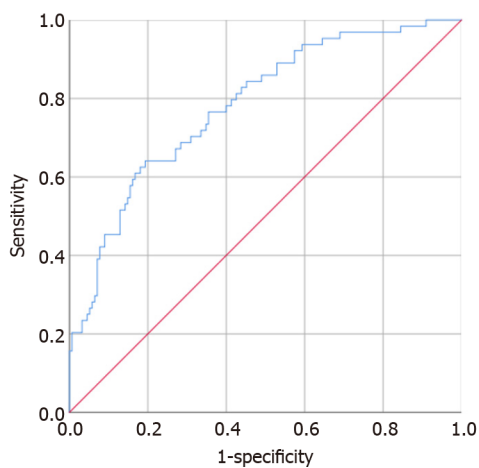


Figure 4 Area under the curve of the subpubic arch angle predicts the possibility of vaginal delivery.

measurements were between 90 and 110 degrees. This result was in general agreement with the findings of Choi *et al*[6] in 2013 who measured the SPAA in 27 Asian women in Hong Kong at 9–13 wk of gestation, and found a range of 95.5–127.6°; an angle smaller than that shown for European and American populations. A similar study by Albrich *et al*[7] in 2015 entailed the use of 3D ultrasound to measure the SPAA in 611 mothers, and their values were much higher than in our study: their mean value was 109.3° (65.6–131.6°). This result may be related to the fact that 78.8% of these authors' study population was Caucasian and reflected a taller stature.

In addition to population differences, we also determined that the instrument, mode, and timing of measurement exerted an effect on SPAA values. Handa *et al*[8] used MRI to measure the SPAA and compared the pelvic size of white American women with African American women, and found that their SPAAs were $83.7 \pm 7.0^\circ$ and $82.8 \pm 6.7^\circ$, respectively. These values were much smaller than ones reported by Albrich *et al*[9] or relative to the data from this study using ultrasonographic measurements. The values obtained by different measurers in the same study were also inconsistent. For example, in the study by Albrich *et al*[9] in 2012, it was found that for the same sample the SPAA measured by one examiner was $99.71 \pm 10.89^\circ$ while another measured it at $101.4 \pm 10.33^\circ$. In addition, the timing of measurements used in different studies varies, potentially leading to measurement errors. For example, in the current study we noted the mean of the three measurements of the SPAA before 38 wk, while previous investigators measured in early pregnancy and also 1–3 d after delivery. However, it was unclear from the current study whether childbirth caused changes in the SPAA. Considering that this index mainly serves to predict vaginal delivery, the measurement time should be appropriate prior to delivery. Ultimately, however, considering the cost of care, the ease of implementation of the measurement method, and patient acceptance, we recommend ultrasonographic measurement.

Relationship between the SPAA and mode of delivery

We herein analyzed the close association between SPAA and delivery mode from two aspects.

The SPAA in the normal vaginal delivery group was larger than that in the cesarean delivery group ($P = 0.000$), consistent with previous studies. For example, a study by Gilboa *et al*[10] in 2013 revealed that the SPAA in pregnant women with operative delivery was less than in women experiencing vaginal delivery ($97.1 \pm 11.5^\circ$ vs $110.1 \pm 14.0^\circ$, $P < 0.005$). These data are also more consistent with the clinical analysis since the SPAA must be larger in pregnant women who can deliver vaginally; otherwise, they could not deliver vaginally and would have to deliver by cesarean section.

Next, we ascertained that the SPAA was a predictor of successful vaginal delivery among pregnant women in spontaneous labor. Logistic regression analysis revealed that the SPAA was significantly associated with vaginal delivery. Moreover, the sensitivity of SPAA in this event was significant (AUC, 0.782; $P = 0.000$; 95%CI: 0.717–0.848), a finding consistent with a study by Perlman *et al*[11]. However, this result conflicted with data from the study by Albrich *et al*[7] in 2015, who failed to find an association between the SPAA and vaginal delivery. This apparent dichotomy may have been due to the differences in the pelvic characteristics between the authors' sample and the present study: their study sample was predominantly Caucasian with a wider stature and pelvis, and their mean SPAA of 109.3° was greater than the 99.37° in our Asian population in the present study. This also implies that the SPAA is no longer a constraint for vaginal delivery in a wider pelvis.

In addition, this study revealed that maternal age, height, and neonatal weight—in addition to SPAA—predicted vaginal delivery ($P = 0.000$, 0.026, and 0.042). It is evident that the ability to deliver vaginally and the need for forceps, fetal suction, or even cesarean section to assist delivery are complex matters reflecting several factors that may exert influence. Of these, ultrasound measurement of the SPAA should gain the attention of obstetricians for further routine use because of its non-invasiveness, ease of performance, and favorable predictability.

Relationship between SPAA and duration of labor

We also found that the SPAA was inextricably linked to the length of labor. The analysis of the SPAA and the length of the second stage of labor in vaginal delivery herein revealed a significant difference in the SPAA ($P = 0.045$). This indicated that the duration of the second stage of labor was related to the SPAA, and the smaller the SPAA, the longer the second stage of labor; this finding was congruent with work by Albrich *et al*[7] in 2015, who found that the SPAA was associated with the second stage of labor in pregnant women with normal vaginal delivery (95%CI: 1.01–1.03; $P = 0.003$). Additionally, a study by Gilboa *et al*[10] in 2013 showed that for every 1° decrease in the SPAA, the odds ratio for surgical delivery was 0.933. Thus, it is evident that the SPAA is robustly related to the length of the second stage of labor. Our regression analysis also depicted age and height as correlated with the duration of the second stage of labor.

However, we did not uncover an association between the SPAA and length of the first stage of labor, as only maternal weight gain positively predicted the length of the first stage of labor ($P = 0.025$). This result may be due to the fact that the SPAA is the pelvic exit meridian, which, in the absence of other pelvic abnormalities, only affects the length of the second stage of labor and not the first stage.

Study shortcomings and outlook

The present study included only 301 pregnant women, and we will therefore in our follow-up study further increase sample size to achieve a more accurate assessment of the SPAA and its relationship to the mode of delivery, in the hope of promoting the application of 3D ultrasound in pelvic measurement.

CONCLUSION

In conclusion, the SPAA as an important index in pelvic measurement that should be given greater clinical attention as it is closely related to the ability to deliver vaginally, and it can also predict the occurrence of cesarean delivery. 3D ultrasound should be promoted as an important tool to be used in measuring the SPAA as it is of relatively low cost and easy to perform. We posit that this tool can reduce the number of emergency cesarean deliveries conducted during labor.

ARTICLE HIGHLIGHTS

Research background

Numerous variables are linked to the success of vaginal delivery, including the subpubic arch angle (SPAA) during labor, the importance of which has not yet been fully elucidated.

Research motivation

For this study, we adopted three-dimensional (3D) trans-perineal ultrasound to examine the SPAA distributional characteristics.

Research objectives

For this study, we adopted 3D trans-perineal ultrasound to examine the SPAA distributional characteristics and to ascertain SPAA's ability to predict the type and duration of labor.

Research methods

The present study comprised a total of 301 pregnant women who had given birth at Beijing Tiantan Hospital of the Capital Medical University between January and December of 2021.

Research results

Our analysis of 301 pregnant women revealed that the SPAA measured using 3D trans-perineal ultrasound had a minimum angle of 81° and a maximum angle of 122.2° . The angle in the normal vaginal delivery group was greater than that in the labor cesarean group ($P = 0.000$). The SPAA was a highly significant positive predictor of normal vaginal delivery ($P = 0.000$) with an area under the curve of 0.782 ($P = 0.000$; 95%CI: 0.717–0.848). We found the length of the second stage of labor to be positively influenced by the SPAA using linear regression analysis ($P = 0.045$).

Research conclusions

The SPAA was a highly significant positive predictor of normal vaginal delivery. The length of the second stage of labor and normal vaginal birth were predicted by SPAA.

Research perspectives

The SPAA as an important index in pelvic measurement that should be given greater clinical attention as it is closely related to the ability to deliver vaginally, and it can also predict the occurrence of cesarean delivery.

ACKNOWLEDGEMENTS

We would like to thank the Hai-Man Song of Department of Ultrasound, Beijing Tiantan Hospital, Capital Medical University.

FOOTNOTES

Author contributions: All authors contributed to the study conception and design; material preparation, data collection and analysis were performed by Liang ZW; The first draft of the manuscript was written by Liang ZW and all authors commented on previous versions of the manuscript; All authors read and approved the final manuscript.

Institutional review board statement: The study was reviewed and approved by the Beijing Tiantan Hospital Institutional Review Board (No.KY2022-105-03).

Clinical trial registration statement: This study is registered at Clinical Hospital Center, Beijing Tiantan Hospital TrialRegistry. The registration identification number is KY2022-105-03.

Informed consent statement: All study participants, or their legal guardian, provided informed written consent prior to study enrollment.

Conflict-of-interest statement: The authors declare that they have no conflicts of interest.

Data sharing statement: No additional data are available.

CONSORT 2010 statement: The authors have read the CONSORT 2010 statement, and the manuscript was prepared and revised according to the CONSORT 2010 statement.

Open-Access: This article is an open-access article that was selected by an in-house editor and fully peer-reviewed by external reviewers. It is distributed in accordance with the Creative Commons Attribution NonCommercial (CC BY-NC 4.0) license, which permits others to distribute, remix, adapt, build upon this work non-commercially, and license their derivative works on different terms, provided the original work is properly cited and the use is non-commercial. See: <https://creativecommons.org/licenses/by-nc/4.0/>

Country/Territory of origin: China

ORCID number: Wan-Li Gao [0000-0002-7117-6324](#).

S-Editor: Liu JH

L-Editor: A

P-Editor: Liu JH

REFERENCES

- 1 **Martelli F**, Youssef A, Capogna MV, Bruno A, Bruno V, Dodaro MG, Ticconi C, Ghi T, Piccione E, Pietropolli A. Longitudinal Changes of Subpubic Arch Angle throughout Pregnancy. *Gynecol Obstet Invest* 2020; **85**: 100-106 [PMID: [31747672](#) DOI: [10.1159/000504096](#)]
- 2 **Yeomans ER**. Clinical pelvimetry. *Clin Obstet Gynecol* 2006; **49**: 140-146 [PMID: [16456351](#) DOI: [10.1097/01.grf.0000198185.94413.0d](#)]
- 3 **Floberg J**, Belfrage P, Ohlén H. Influence of pelvic outlet capacity on labor. A prospective pelvimetry study of 1,429 unselected primiparas. *Acta Obstet Gynecol Scand* 1987; **66**: 121-126 [PMID: [3618135](#) DOI: [10.3109/00016348709083032](#)]
- 4 **Maharaj D**. Assessing cephalopelvic disproportion: back to the basics. *Obstet Gynecol Surv* 2010; **65**: 387-395 [PMID: [20633305](#) DOI: [10.1097/OGX.0b013e3181ecd0c](#)]
- 5 **Dietz HP**, Lanzaone V, Simpson JM. Predicting operative delivery. *Ultrasound Obstet Gynecol* 2006; **27**: 409-415 [PMID: [16565982](#) DOI: [10.1002/uog.2731](#)]
- 6 **Choi S**, Chan SS, Sahota DS, Leung TY. Measuring the angle of the subpubic arch using three-dimensional transperineal ultrasound scan: intraoperator repeatability and interoperator reproducibility. *Am J Perinatol* 2013; **30**: 191-196 [PMID: [22875664](#) DOI: [10.1055/s-0032-1322518](#)]
- 7 **Albrich SB**, Shek K, Krahn U, Dietz HP. Measurement of subpubic arch angle by three-dimensional transperineal ultrasound and impact on vaginal delivery. *Ultrasound Obstet Gynecol* 2015; **46**: 496-500 [PMID: [25678020](#) DOI: [10.1002/uog.14814](#)]
- 8 **Handa VL**, Lockhart ME, Fielding JR, Bradley CS, Brubaker L, Cundiff GW, Ye W, Richter HE; Pelvic Floor Disorders Network. Racial differences in pelvic anatomy by magnetic resonance imaging. *Obstet Gynecol* 2008; **111**: 914-920 [PMID: [18378751](#) DOI: [10.1097/AOG.0b013e318169ce03](#)]
- 9 **Albrich S**, Laterza RM, Merinsky A, Skala C, Koelbl H, Naumann G. [Measurement of the infrapubic angle using 3D perineal ultrasound and its relationship to obstetrical parameters]. *Ultraschall Med* 2012; **33**: E95-E100 [PMID: [22723036](#) DOI: [10.1055/s-0031-1299053](#)]
- 10 **Gilboa Y**, Kivilevitch Z, Spira M, Kedem A, Katorza E, Moran O, Achiron R. Pubic arch angle in prolonged second stage of labor: clinical significance. *Ultrasound Obstet Gynecol* 2013; **41**: 442-446 [PMID: [23001876](#) DOI: [10.1002/uog.12304](#)]
- 11 **Perlman S**, Schreiber H, Kivilevitch Z, Bardin R, Kassif E, Achiron R, Gilboa Y. Sonographic risk assessment for an unplanned operative delivery: a prospective study. *Arch Gynecol Obstet* 2022; **306**: 1469-1475 [PMID: [35107615](#) DOI: [10.1007/s00404-022-06413-7](#)]



Published by **Baishideng Publishing Group Inc**
7041 Koll Center Parkway, Suite 160, Pleasanton, CA 94566, USA

Telephone: +1-925-3991568

E-mail: bpgoffice@wjgnet.com

Help Desk: <https://www.f6publishing.com/helpdesk>

<https://www.wjgnet.com>

