

World Journal of *Clinical Cases*

World J Clin Cases 2023 September 16; 11(26): 6031-6317



Contents

Thrice Monthly Volume 11 Number 26 September 16, 2023

MINIREVIEWS

- 6031 Diabetes among Muslims during Ramadan: A narrative review

Ochani RK, Shaikh A, Batra S, Pikale G, Surani S

ORIGINAL ARTICLE

Retrospective Cohort Study

- 6040 Clinical evaluation of ventilation mode on acute exacerbation of chronic obstructive pulmonary disease with respiratory failure

Wang JJ, Zhou Z, Zhang LY

Retrospective Study

- 6051 Predictive value of preoperative albumin-bilirubin score and other risk factors for short-term outcomes after open pancreatoduodenectomy

Zavrtanik H, Cosola D, Badovinac D, Hadžialjević B, Horvat G, Plevel D, Bogoni S, Tarchi P, de Manzini N, Tomažič A

- 6066 Lyophilized recombinant human brain natriuretic peptide for chronic heart failure: Effects on cardiac function and inflammation

Li F, Li H, Luo R, Pei JB, Yu XY

- 6073 Continuous renal replacement therapy with oXiris® in patients with hematologically malignant septic shock: A retrospective study

Wang J, Wei SR, Ding T, Zhang LP, Weng ZH, Cheng M, Zhou Y, Zhang M, Liu FJ, Yan BB, Wang DF, Sun MW, Cheng WX

- 6083 Serum basic fibroblast growth factor and interleukin-1 β predict the effect of first-line chemotherapy in patients with advanced gastric cancer

Zheng L, Gan LH, Yao L, Li B, Huang YQ, Zhang FB, Kuang MQ, Fang N

- 6091 Multinucleated giant cells of bladder mucosa are modified telocytes: Diagnostic and immunohistochemistry algorithm and relation to PD-L1 expression score

Gulinac M, Velikova T, Dikov D

Clinical Trials Study

- 6105 Comparing the efficacy of regen-cov, remdesivir, and favipiravir in reducing invasive mechanical ventilation need in hospitalized COVID-19 patients

Hegazy SK, Tharwat S, Hassan AH

META-ANALYSIS

- 6122 Risk factors for stroke recurrence in young patients with first-ever ischemic stroke: A meta-analysis

Xia Y, Liu H, Zhu R

SCIENTOMETRICS

- 6132** Unveiling the hidden world of gut health: Exploring cutting-edge research through visualizing randomized controlled trials on the gut microbiota

Zyoud SH, Shakhshir M, Abushanab AS, Koni A, Shahwan M, Jairoun AA, Abu Taha A, Al-Jabi SW

CASE REPORT

- 6147** Rivaroxaban for the treatment of heparin-induced thrombocytopenia with thrombosis in a patient undergoing artificial hip arthroplasty: A case report

Ly FF, Li MY, Qu W, Jiang ZS

- 6154** Mepolizumab induced palmoplantar psoriasis: A case report

Artosi F, Diluvio L, Vultaggio M, Campione E, Bianchi L

- 6159** Early diagnosis of renal pelvis villous adenoma: A case report

Li LL, Song PX, Xing DF, Liu K

- 6165** Identification of the dominant loop of a dual-loop macro-reentry left atrial flutter without prior intervention using high-density mapping technology: A case report

Yu SD, Chu YP

- 6170** Surgery for fibrous dysplasia associated with aneurysmal-bone-cyst-like changes in right proximal femur: A case report

Xie LL, Yuan X, Zhu HX, Pu D

- 6176** Efficacy of abatacept treatment in a patient with enteropathy carrying a variant of unsignificance in *CTLA4* gene: A case report

Musabak U, Erdoğan T, Ceylaner S, Özbek E, Suna N, Özdemir BH

- 6183** Postpartum hemophagocytic lymphohistiocytosis: A case report

An JH, Ahn JH

- 6189** Non-arteritic anterior ischemic optic neuropathy combined with branch retinal vein obstruction: A case report

Gong HX, Xie SY

- 6194** Large colonic lipoma with a laterally spreading tumor treated by endoscopic submucosal dissection: A case report

Bae JY, Kim HK, Kim YJ, Kim SW, Lee Y, Ryu CB, Lee MS

- 6200** T/myeloid mixed-phenotype acute leukemia treated with venetoclax and decitabine: A case report

Park S, Jeong EJ, Kang JH, Lee GW, Go SI, Lee DH, Koh EH

- 6206** Severe inflammatory disorder in trisomy 8 without myelodysplastic syndrome and response to methylprednisolone: A case report

Pan FY, Fan HZ, Zhuang SH, Pan LF, Ye XH, Tong HJ

- 6213** Aggressive variant prostate cancer: A case report and literature review
Weng XT, Lin WL, Pan QM, Chen TF, Li SY, Gu CM
- 6223** Typical Zollinger-Ellison syndrome-atypical location of gastrinoma and absence of hypergastrinemia: A case report and review of literature
Zhang JM, Zheng CW, Li XW, Fang ZY, Yu MX, Shen HY, Ji X
- 6231** Left epigastric isolated tumor fed by the inferior phrenic artery diagnosed as ectopic hepatocellular carcinoma: A case report
Liu HB, Zhao LH, Zhang YJ, Li ZF, Li L, Huang QP
- 6240** Squamous cell carcinoma associated with endometriosis in the uterus and ovaries: A case report
Cai Z, Yang GL, Li Q, Zeng L, Li LX, Song YP, Liu FR
- 6246** Intestinal obstruction due to giant liver cyst: A case report
Küçük A, Mohamed SS, Abdi AM, Ali AY
- 6252** Difficulties in diagnosing angiomatoid fibrous histiocytoma of the head and neck region: A case report
Michcik A, Bieñ M, Wojciechowska B, Polcyn A, Garbacewicz Ł, Kowalski J, Drogozewska B
- 6262** Efficacy of tolvaptan in an infant with syndrome of inappropriate antidiuretic hormone secretion associated with holoprosencephaly: A case report
Mori M, Takeshita S, Nakamura N, Mizuno Y, Tomita A, Aoyama M, Kakita H, Yamada Y
- 6268** Recurrent hemoptysis in pediatric bronchial Dieulafoy's disease with inferior phrenic artery supply: A case report
Wang F, Tang J, Peng M, Huang PJ, Zhao LJ, Zhang YY, Wang T
- 6274** Variant of Guillain-Barré syndrome with anti-sulfatide antibody positivity and spinal cord involvement: A case report
Liu H, Lv HG, Zhang R
- 6280** Secondary pulmonary infection by *Fusarium solani* and *Aspergillus niger* during systemic steroid treatment for COVID-19: A case report
Usuda D, Kato M, Sugawara Y, Shimizu R, Inami T, Tsuge S, Sakurai R, Kawai K, Matsubara S, Tanaka R, Suzuki M, Shimozawa S, Hotchi Y, Osugi I, Katou R, Ito S, Mishima K, Kondo A, Mizuno K, Takami H, Komatsu T, Oba J, Nomura T, Sugita M
- 6289** Collision tumor of primary malignant lymphoma and adenocarcinoma in the colon diagnosed by molecular pathology: A case report and literature review
Jiang M, Yuan XP
- 6298** Successful resolution of gastric perforation caused by a severe complication of pancreatic walled-off necrosis: A case report
Noh BG, Yoon M, Park YM, Seo HI, Kim S, Hong SB, Park JK, Lee MW
- 6304** Bilateral dislocation of the long head of biceps tendon with intact rotator cuff tendon: A case report
Sohn HJ, Cho CH, Kim DH

- 6311** Delayed diagnosis of abdominal Henoch-Schonlein purpura in children: A case report

Guo H, Wang ZL, Tao Z

ABOUT COVER

Editorial Board Member of *World Journal of Clinical Cases*, Vikram K Mahajan, MD, Professor, Dermatology, Venereology and Leprosy, Dr. Radhakrishnan Government Medical College, Kangra 177001, Himachal Pradesh, India. vkm1@rediffmail.com

AIMS AND SCOPE

The primary aim of *World Journal of Clinical Cases* (WJCC, *World J Clin Cases*) is to provide scholars and readers from various fields of clinical medicine with a platform to publish high-quality clinical research articles and communicate their research findings online.

WJCC mainly publishes articles reporting research results and findings obtained in the field of clinical medicine and covering a wide range of topics, including case control studies, retrospective cohort studies, retrospective studies, clinical trials studies, observational studies, prospective studies, randomized controlled trials, randomized clinical trials, systematic reviews, meta-analysis, and case reports.

INDEXING/ABSTRACTING

The WJCC is now abstracted and indexed in Science Citation Index Expanded (SCIE, also known as SciSearch®), Journal Citation Reports/Science Edition, Current Contents®/Clinical Medicine, PubMed, PubMed Central, Reference Citation Analysis, China National Knowledge Infrastructure, China Science and Technology Journal Database, and Superstar Journals Database. The 2023 Edition of Journal Citation Reports® cites the 2022 impact factor (IF) for WJCC as 1.1; IF without journal self cites: 1.1; 5-year IF: 1.3; Journal Citation Indicator: 0.26; Ranking: 133 among 167 journals in medicine, general and internal; and Quartile category: Q4.

RESPONSIBLE EDITORS FOR THIS ISSUE

Production Editor: Hua-Ge Yin; Production Department Director: Xu Guo; Editorial Office Director: Jin-Lei Wang.

NAME OF JOURNAL

World Journal of Clinical Cases

ISSN

ISSN 2307-8960 (online)

LAUNCH DATE

April 16, 2013

FREQUENCY

Thrice Monthly

EDITORS-IN-CHIEF

Bao-Gan Peng, Jerzy Tadeusz Chudek, George Kontogeorgos, Maurizio Serati, Ja Hyeon Ku

EDITORIAL BOARD MEMBERS

<https://www.wjgnet.com/2307-8960/editorialboard.htm>

PUBLICATION DATE

September 16, 2023

COPYRIGHT

© 2023 Baishideng Publishing Group Inc

INSTRUCTIONS TO AUTHORS

<https://www.wjgnet.com/bpg/gerinfo/204>

GUIDELINES FOR ETHICS DOCUMENTS

<https://www.wjgnet.com/bpg/GerInfo/287>

GUIDELINES FOR NON-NATIVE SPEAKERS OF ENGLISH

<https://www.wjgnet.com/bpg/gerinfo/240>

PUBLICATION ETHICS

<https://www.wjgnet.com/bpg/GerInfo/288>

PUBLICATION MISCONDUCT

<https://www.wjgnet.com/bpg/gerinfo/208>

ARTICLE PROCESSING CHARGE

<https://www.wjgnet.com/bpg/gerinfo/242>

STEPS FOR SUBMITTING MANUSCRIPTS

<https://www.wjgnet.com/bpg/GerInfo/239>

ONLINE SUBMISSION

<https://www.f6publishing.com>



Left epigastric isolated tumor fed by the inferior phrenic artery diagnosed as ectopic hepatocellular carcinoma: A case report

Hong-Bo Liu, Li-Hua Zhao, Yong-Jian Zhang, Zhi-Feng Li, Lei Li, Qian-Peng Huang

Specialty type: Gastroenterology and hepatology

Provenance and peer review: Unsolicited article; Externally peer reviewed.

Peer-review model: Single blind

Peer-review report's scientific quality classification

Grade A (Excellent): A
Grade B (Very good): 0
Grade C (Good): C, C
Grade D (Fair): D, D
Grade E (Poor): 0

P-Reviewer: Boteon YL, Brazil; Sudhamshu K, Nepal; Wani I, India

Received: May 30, 2023

Peer-review started: May 30, 2023

First decision: July 17, 2023

Revised: July 30, 2023

Accepted: August 18, 2023

Article in press: August 18, 2023

Published online: September 16, 2023



Hong-Bo Liu, Qian-Peng Huang, Department of General Surgery, Handan Central Hospital, Handan 056008, Hebei Province, China

Li-Hua Zhao, Department of Nursing, Affiliated Hospital of Hebei University of Engineering, Handan 056002, Hebei Province, China

Yong-Jian Zhang, Department of Gastroenterology, Affiliated Hospital of Hebei University of Engineering, Handan 056002, Hebei Province, China

Zhi-Feng Li, Department of General Surgery, Handan First Hospital, Handan 056000, Hebei Province, China

Lei Li, Department of General Surgery, Affiliated Hospital of Hebei University of Engineering, Handan 056002, Hebei Province, China

Corresponding author: Qian-Peng Huang, MD, Associate Chief Physician, Department of General Surgery, Handan Central Hospital, No. 59 Congtai North Road, Congtai District, Handan 056008, Hebei Province, China. peng881223@126.com

Abstract

BACKGROUND

Hepatocellular carcinoma (HCC) is one of the most frequent cancers and the main cause of cancer-related death worldwide. Ectopic HCC, an extremely rare type of HCC, exhibits a wide range of clinical signs and radiographic features, making preoperative identification challenging.

CASE SUMMARY

A 47-year-old man underwent routine abdominal color ultrasonography, which identified an asymptomatic tumor in the left upper abdomen. The patient had no history of hepatitis, did not drink alcohol, and had no family history of cancer. Abdominal contrast-enhanced computed tomography (CT) revealed a heterogeneously enhanced lesion between the spleen and stomach that had invaded the diaphragm, with blood supplied by the left inferior phrenic artery. The patient underwent laparoscopic surgery, and HCC was identified by postoperative pathology. Additionally, specific immunohistochemical staining was performed to assess the molecular biological characteristics of the HCC. The patient underwent two rounds of hepatic arterial interventional chemotherapy after surgery. Abdominal plain and enhanced magnetic resonance imaging and lung CT 3 mo postoperatively revealed no signs of local recurrence or distant

metastasis.

CONCLUSION

This asymptomatic ectopic HCC case described achieved an excellent result due to early detection, radical resection, and systematic surveillance.

Key Words: Ectopic hepatocellular carcinoma; Left subphrenic tumor; Isolated tumor; Diaphragmatic involvement; Inferior phrenic artery; Case report

©The Author(s) 2023. Published by Baishideng Publishing Group Inc. All rights reserved.

Core Tip: Ectopic hepatocellular carcinoma (HCC) is relatively rare, and there is no acknowledged diagnostic or treatment standard for this type of tumor. Here, we describe a 47-year-old man with diaphragmatic invasion caused by a heterogeneously enhanced lesion between his spleen and stomach that was eventually diagnosed as HCC. We thoroughly describe the patient's information, course of treatment, and excellent curative result.

Citation: Liu HB, Zhao LH, Zhang YJ, Li ZF, Li L, Huang QP. Left epigastric isolated tumor fed by the inferior phrenic artery diagnosed as ectopic hepatocellular carcinoma: A case report. *World J Clin Cases* 2023; 11(26): 6231-6239

URL: <https://www.wjgnet.com/2307-8960/full/v11/i26/6231.htm>

DOI: <https://dx.doi.org/10.12998/wjcc.v11.i26.6231>

INTRODUCTION

Hepatocellular carcinoma (HCC) is one of the most prevalent cancers and a major contributor to the global mortality rate due to cancer[1]. HCC has a dismal prognosis, with a relative 5-year survival rate of only approximately 18%[2]. Ectopic HCC is an entity of HCC that has no connection to the mother liver and is an extremely rare condition and poses a significant diagnostic challenge before surgery. Ectopic liver tissue, which has an incidence of 0.23% to 0.7%, is hypothesized to be the main source of ectopic HCC[3]. We describe a man with an isolated mass in his left upper abdomen that ultimately proved to be HCC.

CASE PRESENTATION

Chief complaints

A 47-year-old male patient was referred to our hospital due for a routine medical examination more than 1 mo ago, which revealed an asymptomatic tumor in the left upper abdomen.

History of present illness

The asymptomatic tumor was suspected to be a gastrointestinal stromal tumor during routine abdominal color ultrasonography.

History of past illness

The patient had no medical history, no history of viral hepatitis, and no history of smoking or consuming alcohol.

Personal and family history

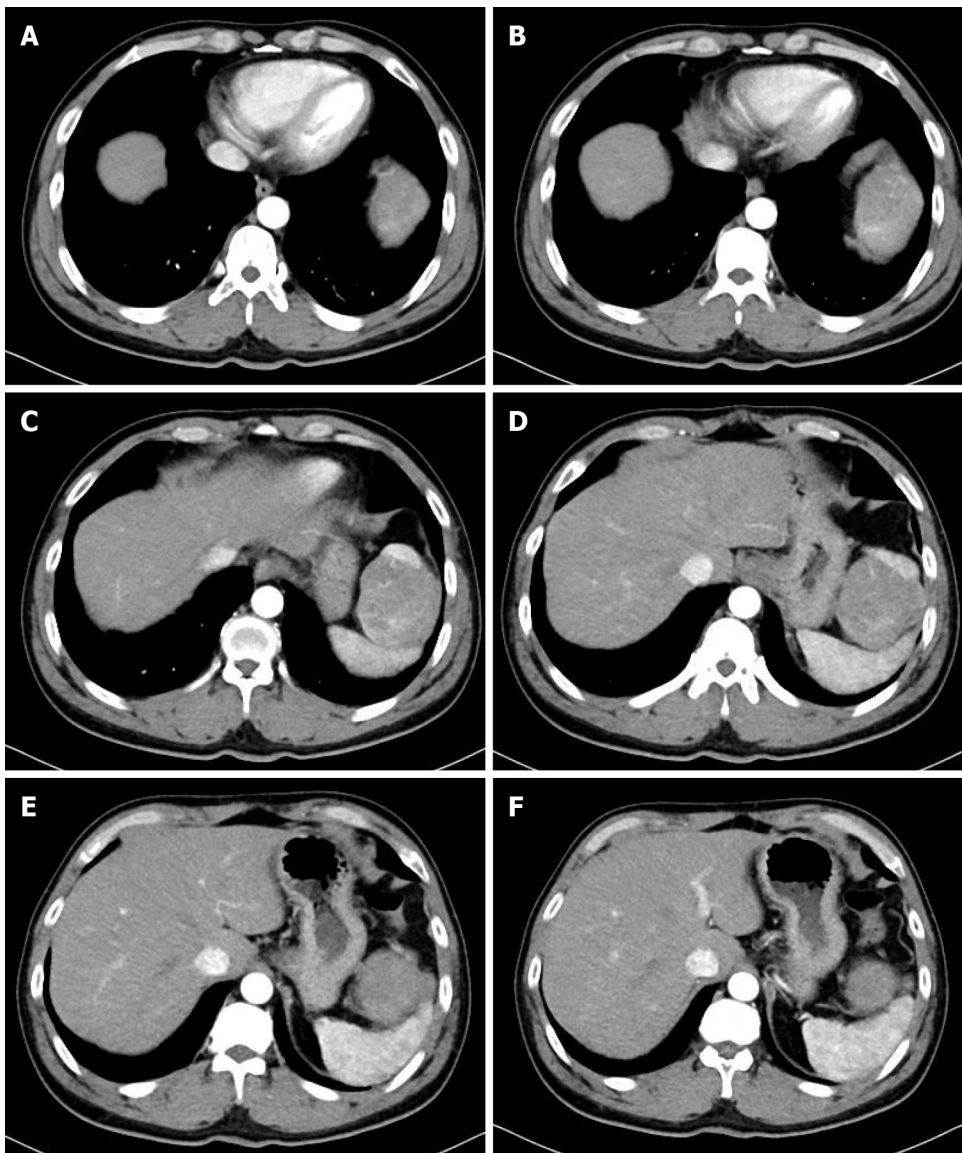
There was no history of malignancy in the family.

Physical examination

Physical examination revealed no obvious mass or tenderness. Bowel sounds were within an acceptable range, while rectal palpation and ascites examinations were negative.

Laboratory examinations

On laboratory examination, the only specific abnormality was an elevated α -fetoprotein (AFP) concentration (194.38 ng/mL). The results of other laboratory tests, namely hemoglobin, gamma glutamyl transferase, alkaline phosphatase, anti-hepatitis C virus, hepatitis B virus (HBV) surface antigen, carcinoembryonic antigen, and cancer antigen 19-9, were within normal limits.



DOI: 10.12998/wjcc.v11.i26.6231 Copyright ©The Author(s) 2023.

Figure 1 Abdominal enhanced computed tomography showing a tumor with heterogeneous enhancement. A: Diaphragmatic parietal level; B: Bottom heart level; C: Upper pole level of spleen; D: Esophageal hiatus level; E: Spleen hilar level; F: Lower pole level of tumor (Arterial phase).

Imaging examinations

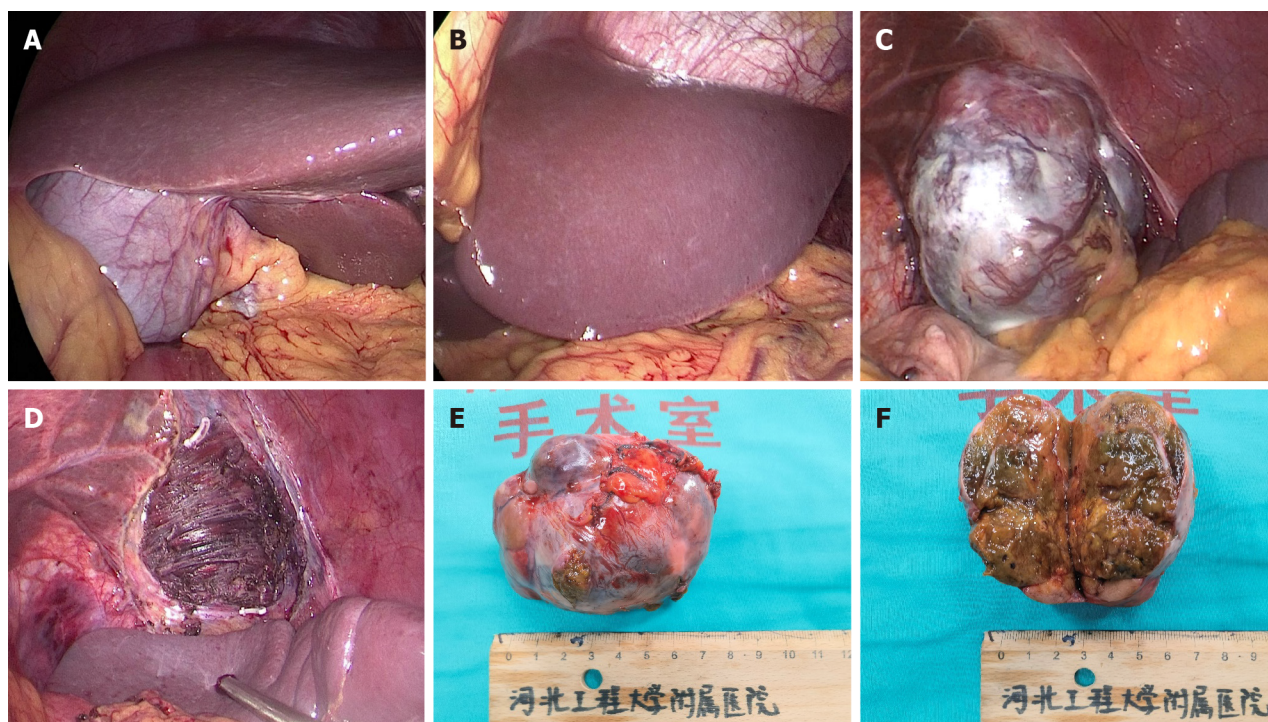
Abdominal ultrasonography revealed a heterogeneous mass measuring approximately 6 cm × 9 cm between the spleen and stomach. Contrast-enhanced computed tomography (CT) showed that the shape and size of the liver were normal, the edges were smooth, the proportion of each lobe was balanced, and no obvious abnormal density shadows were identifiable in the liver parenchyma. A soft tissue mass was observed in the splenic and gastric spaces, with a CT value of 48 HU and size of 6.3 cm × 9.3 cm. Enhanced CT showed uneven enhancement (Figure 1). CT values during the arterial, portal, and extended stages were 71-125 HU, 82-112 HU, and 72-85 HU, respectively (Supplementary Figure 1). The tumor feeding artery originated from the left inferior phrenic artery.

FINAL DIAGNOSIS

An ectopic HCC with diaphragmatic involvement was eventually diagnosed.

TREATMENT

The tumor was located in the left subdiaphragm, which was a challenge to access with open surgical techniques. Therefore, we performed laparoscopic surgery. During the operation, no ascites was found, and the liver was normal in



DOI: 10.12998/wjcc.v11.i26.6231 Copyright ©The Author(s) 2023.

Figure 2 Operative findings and gross view of the surgical specimen. A: The right liver lobe; B: The left liver lobe; C: The tumor with capsule formation and diaphragm invasion; D: Diaphragmatic wound after tumor resection; E: Macroscopic images of the tumor; F: Cross-sectional images of the tumor.



DOI: 10.12998/wjcc.v11.i26.6231 Copyright ©The Author(s) 2023.

Figure 3 Hepatic arteriography showing no microscopic tumors in the liver.

size, color, and consistency. A tumor with an intact envelope was found between the greater curvature of the stomach and the spleen. It was not related to the hepatic parenchyma and had invaded the diaphragm (Figure 2). We removed part of the diaphragm to ensure that the tumor was entirely resected as the tumor had direct diaphragmatic involvement. Preventive hepatic arterial infusion chemotherapy (HAIC) was administered to the patient twice, 1 mo apart. The potential for intrahepatic microneoplasms, such as micrometastases or a microprimary tumor with metastasis to the left upper abdomen, was ruled out by hepatic arteriography (Figure 3).

OUTCOME AND FOLLOW-UP

Regular monitoring and follow-up were performed after surgery as advised during a multidisciplinary team meeting that examined AFP (Figure 4), lung and skull CT scan, and liver magnetic resonance imaging (Figure 5).

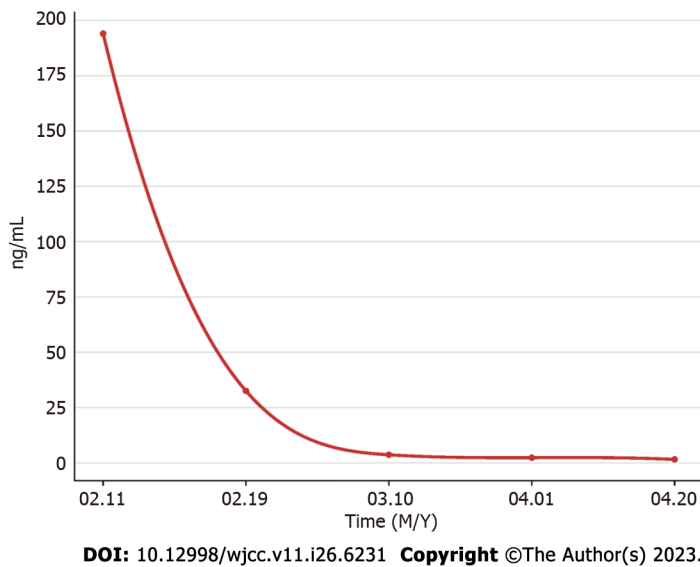


Figure 4 The patient's α -fetoprotein levels over time.

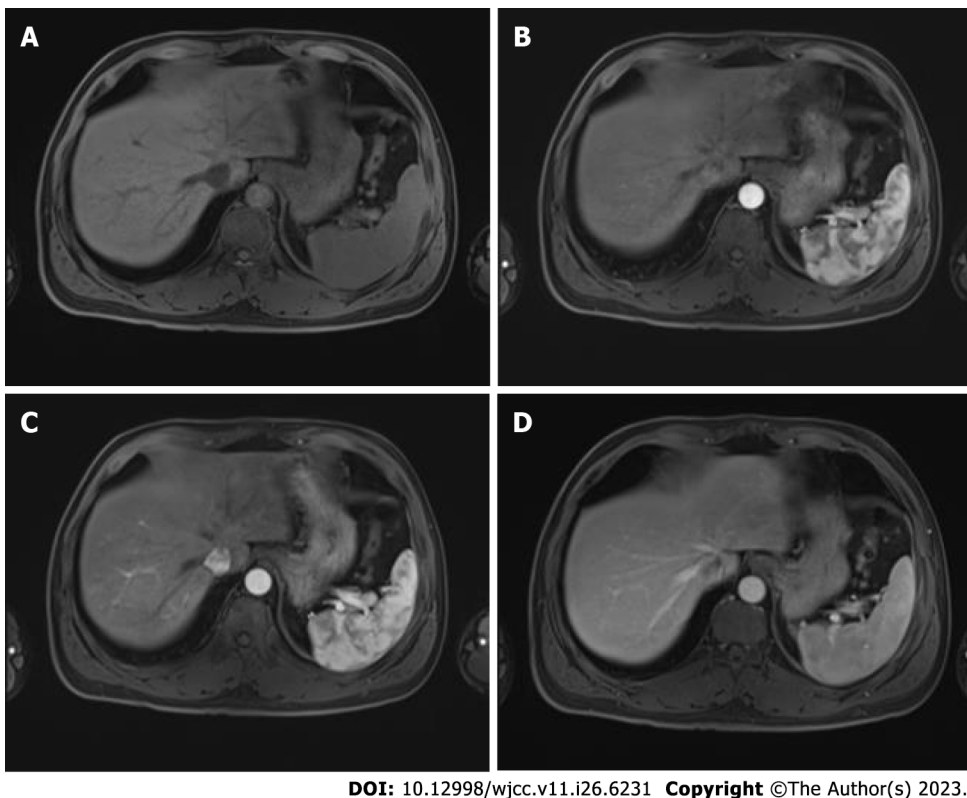
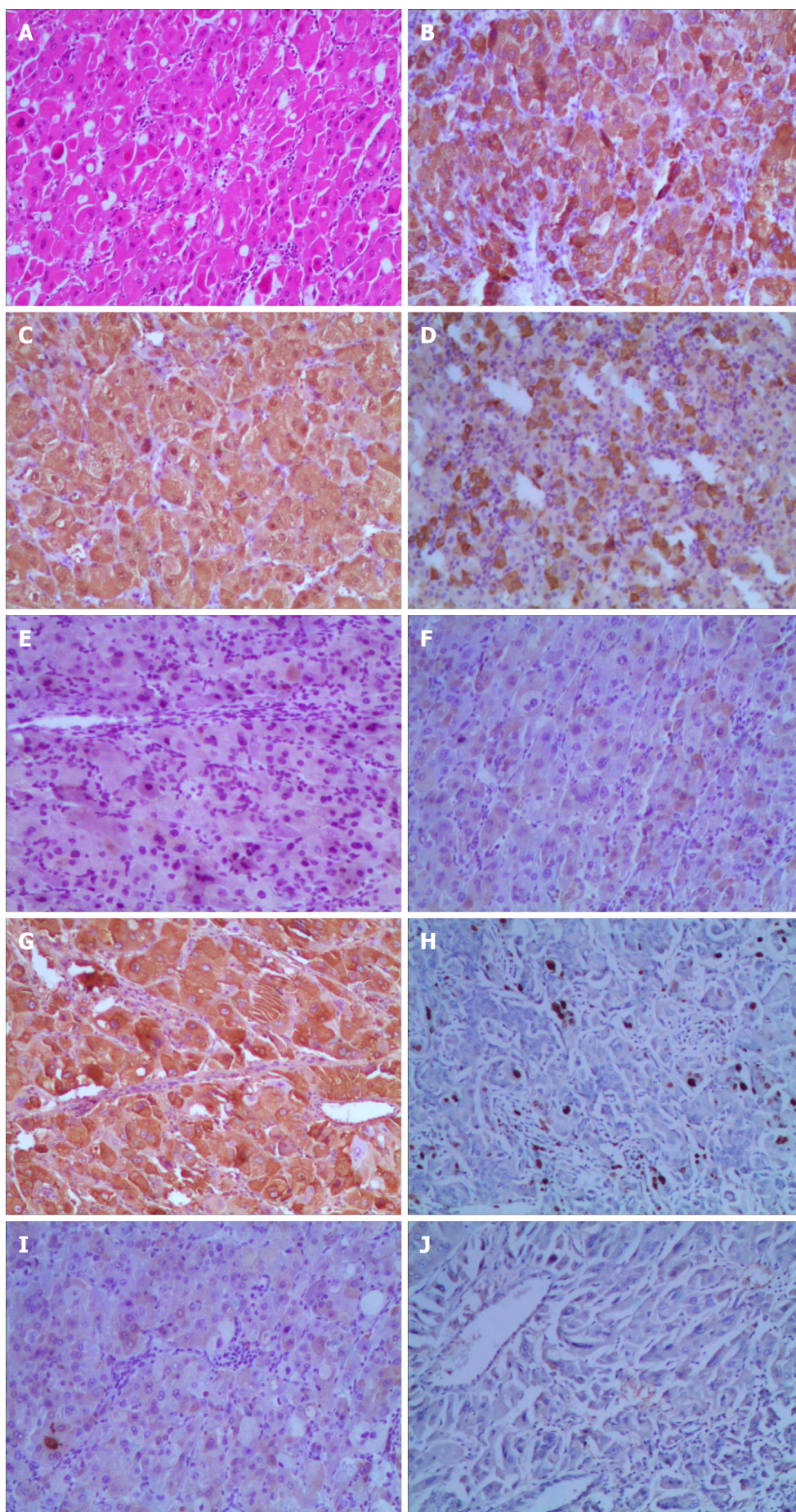
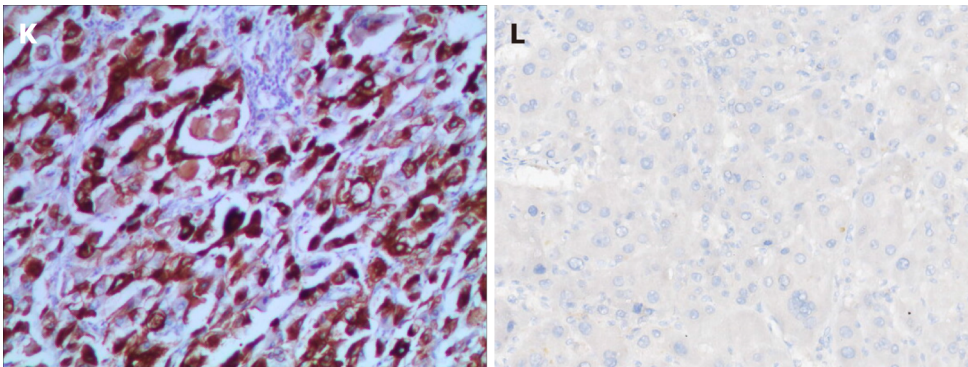


Figure 5 Postoperative enhanced magnetic resonance imaging of the upper abdomen. A: Plain phase; B: Arterial phase; C: Portal phase; D: Extended phase.

Hematoxylin and eosin staining, and immunohistochemistry were used to thoroughly assess the tumor type and its immunological markers (Figure 6). Capsule formation is related to better tumor cell differentiation and tumor biological characteristics compared with no capsule formation, and the pathology results of this patient suggested a well-to-moderately differentiated adenocarcinoma. Immunohistochemical study revealed the following: Hepatocyte antigen (+), arginase-1 (+), AFP (+), inhibin- α (-), cytokeratin (CK) (+/-), GPC-3 (+), Ki-67 (hot regions: 5%), CK19 (-), CK8/18 (-), and hepatocyte paraffin-1 (+). To determine whether the patient could benefit from immunotherapy, we also performed programmed death-ligand 1 testing. However, the results were negative. Consequently, intensive postoperative immunotherapy was not administered.





DOI: 10.12998/wjcc.v11.i26.6231 Copyright ©The Author(s) 2023.

Figure 6 Microscopic findings of the tumor. A: Hematoxylin and eosin (HE)-stained slide (HE, × 40); B: Hepatocyte antigen (+); C: Arginase-1 (+); D: α -fetoprotein (+); E: Inhibin- α (-); F: Cytokeratin (CK) (-); G: Glypican-3 (+); H: Ki-67 (hot regions: 5%) (+); I: CK19 (-); J: CK8/18 (-); K: Hepatocyte paraffin-1 (+); L: Programmed death-ligand 1 (-).

DISCUSSION

HCC is a common malignancy of the digestive system with high morbidity and mortality worldwide. However, only 27 cases of ectopic HCC have been reported as of 2022[4]. The risk factors for ectopic HCC are unrelated to those for typical HCC (such as chronic viral hepatitis B and C; alcohol abuse or alcoholic steatohepatitis; and nonalcoholic fatty liver disease or nonalcoholic steatohepatitis). Ectopic HCC may be caused by problems with biliary drainage, insufficient arterial blood flow, and insufficient venous drainage[3,5]. Prolonged exposure to these carcinogenic factors promotes carcinogenesis. In the present case, the patient had no substantial coexisting conditions or HCC risk factors, and the mother liver was not cirrhotic. The most common extra-hepatic feeding artery of HCC was found to be the inferior phrenic artery (IPA)[6]. Our patient presented with an isolated mass in the left upper abdomen, invaded the diaphragm and fed by the left IPA.

Owing to the distinct features of ectopic HCC, patients present with a wide spectrum of clinical signs and radiological presentations, which makes it challenging to obtain a preoperative diagnosis[7]. In the case described herein, the isolated tumor with no connection to the liver and supplied by diaphragmatic arteries, made preoperative diagnosis challenging. Anatomically, part of ectopic HCC shows a significantly better overall survival than that for HCC in the orthotopic liver due to encapsulation and the possibility of wide resection margins with less vascular invasion[8]. Our patient had well-to-moderately differentiated histological characteristics, with a low Ki-67 labeling index, which may indicate a highly favorable overall survival compared with other histological subtypes.

Some HCCs can attach to and potentially infiltrate nearby tissues, such as the diaphragm, which presents therapeutic difficulty. During the preoperative examination, whether the diaphragm is actually invaded by HCC is difficult to identify; therefore, a postoperative pathological diagnosis or intraoperative frozen pathology is necessary to evaluate whether the diaphragm has been invaded or is just showing diaphragmatic fibrous adhesion[9]. As there is a risk of tumor rupture, tumor spread, and bleeding when the diaphragm is separated from a tumor that has gross diaphragmatic involvement, the grossly involved section of the diaphragm must be excised to ensure radical cure[10]. However, whether diaphragmatic excision is necessary and beneficial for individuals with subclinical adhesion and a smooth, intact tumor capsule is debatable. In the present case, part of the diaphragm was resected to ensure radical resection without postoperative complications. However, extrapolating general implications from a single instance might be challenging.

Laparoscopic techniques are widely used and well recognized by the majority of liver surgeons owing to reduced patient stress and rapid postoperative recovery[11]. However, the use of these techniques in HCC with diaphragmatic involvement has not been widely reported[12]. We have found that this approach is reliable and efficient, helps reduce surgical complexity and operation time, and enhances surgical safety; however, high-quality clinical trials are required.

Surgery is the first option for ectopic HCC patients who can be cured. However, some ectopic HCC patients may experience a recurrence following surgery. Liu *et al*[4] reported that four of the six ectopic HCC recurrence cases were in the mother's liver. It is advised that HAIC was a potential option for preventing early recurrence even though no lesion was seen in the mother liver during the initial therapy[4,13]. Despite the lack of a sufficient and significant amount of high-quality research assistance, we conducted prophylactic HAIC twice with the full knowledge and strong request of the patient and his family due to the high expectations of the patient.

With advanced-stage HCC, comprehensive postoperative care is required, including preventive transcatheter arterial chemoembolization, anti-HBV therapy, immunotherapy, and targeted therapy. Close, frequent monitoring and follow-up are also necessary following surgery, as with resection or radiofrequency ablation of recurring foci[5]. In the present case, we performed two sessions of prophylactic HAIC. To date, there has been no evidence of recurrence.

CONCLUSION

We report a patient with an isolated tumor between the spleen and the stomach that was diagnosed as ectopic HCC. Excellent curative results were obtained following treatment.

ACKNOWLEDGEMENTS

We appreciate the patient's informed consent so that some of the photographs might be used in the publication of this report.

FOOTNOTES

Author contributions: Huang QP contributed to conceptualization; Liu HB and Zhao LH conducted the immunohistochemical staining and drafted the original manuscript; Zhang YJ contributed to patient follow-up and monitoring; Li ZF contributed to interpretation of the results and visualization; Zhang YJ and Li L contributed to reviewing the manuscript and editing; Li L and Huang QP completed the operation; All of the authors have critically reviewed the manuscript and approved the final version; Liu HB and Zhao LH contributed equally to this paper and should be identified as co-first authors.

Informed consent statement: Informed written consent was obtained from the patient for publication of this report and any accompanying images.

Conflict-of-interest statement: All the authors declare that they have no conflict of interest to disclose.

CARE Checklist (2016) statement: The authors have read the CARE Checklist (2016), and the manuscript was prepared and revised according to the CARE Checklist (2016).

Open-Access: This article is an open-access article that was selected by an in-house editor and fully peer-reviewed by external reviewers. It is distributed in accordance with the Creative Commons Attribution NonCommercial (CC BY-NC 4.0) license, which permits others to distribute, remix, adapt, build upon this work non-commercially, and license their derivative works on different terms, provided the original work is properly cited and the use is non-commercial. See: <https://creativecommons.org/licenses/by-nc/4.0/>

Country/Territory of origin: China

ORCID number: Lei Li 0000-0002-5733-3135; Qian-Peng Huang 0000-0002-3016-8360.

S-Editor: Liu JH

L-Editor: Webster JR

P-Editor: Liu JH

REFERENCES

- 1 Sung H, Ferlay J, Siegel RL, Laversanne M, Soerjomataram I, Jemal A, Bray F. Global Cancer Statistics 2020: GLOBOCAN Estimates of Incidence and Mortality Worldwide for 36 Cancers in 185 Countries. *CA Cancer J Clin* 2021; **71**: 209-249 [PMID: 33538338 DOI: 10.3322/caac.21660]
- 2 Siegel RL, Miller KD, Fuchs HE, Jemal A. Cancer statistics, 2022. *CA Cancer J Clin* 2022; **72**: 7-33 [PMID: 35020204 DOI: 10.3322/caac.21708]
- 3 Martinez CA, de Resende HC Jr, Rodrigues MR, Sato DT, Brunialti CV, Palma RT. Gallbladder-associated ectopic liver: A rare finding during a laparoscopic cholecystectomy. *Int J Surg Case Rep* 2013; **4**: 312-315 [PMID: 23399516 DOI: 10.1016/j.ijscr.2013.01.006]
- 4 Liu Q, Li J, Pan Y, Zheng X, Gao B. Challenge in Diagnosis and Treatment of Ectopic Hepatocellular Carcinoma: A Case Report and Literature Review. *Front Surg* 2022; **9**: 827006 [PMID: 35433804 DOI: 10.3389/fsurg.2022.827006]
- 5 Vogel A, Meyer T, Sapisochin G, Salem R, Saborowski A. Hepatocellular carcinoma. *Lancet* 2022; **400**: 1345-1362 [PMID: 36084663 DOI: 10.1016/S0140-6736(22)01200-4]
- 6 Kim HC, Miyayama S, Choi JW, Kim GM, Chung JW. Hepatocellular Carcinoma Supplied by the Inferior Phrenic Artery or Cystic Artery: Anatomic and Technical Considerations. *Radiographics* 2023; **43**: e220076 [PMID: 36306220 DOI: 10.1148/rg.220076]
- 7 Adachi Y, Hayashi H, Yusa T, Takematsu T, Matsumura K, Higashi T, Yamamura K, Yamao T, Imai K, Yamashita YI, Baba H. Ectopic hepatocellular carcinoma mimicking a retroperitoneal tumor: A case report. *World J Gastroenterol* 2020; **26**: 2268-2275 [PMID: 32476791 DOI: 10.3748/wjg.v26.i18.2268]
- 8 Yang Y, Lu Q, Li Z, Wang C, Li Y. A large ectopic hepatocellular carcinoma with adrenal infiltration: a rare case report. *Front Oncol* 2023; **13**: 1116684 [PMID: 37168375 DOI: 10.3389/fonc.2023.1116684]
- 9 Wu Q, Zhang Z, Dong H, Mei B. Combined resection for hepatocellular carcinoma with diaphragmatic invasion: a systematic review and meta-analysis. *Minerva Med* 2020; **111**: 354-361 [PMID: 33032395 DOI: 10.23736/S0026-4806.20.06407-1]
- 10 Liu YC, Mao YZ, Wang JC, Wang J, Lao XM, Chen MS, Li SP. Hepatocellular carcinoma with en bloc diaphragmatic resection: A single-center experience over 14 years. *Int J Surg* 2018; **53**: 93-97 [PMID: 29555528 DOI: 10.1016/j.ijssu.2018.03.033]

- 11 **Mohammed MM**, Basset HSA, Elsayed MAA, Hegazi AAB. Assessment of Safety and Applicability of Laparoscopic vs Open Non-Anatomical Resection of Hepatocellular Carcinoma in Cirrhotic Patients. *QJM-INT J MED* 2021; **114** Supple1 [DOI: [10.1093/qjmed/hcab097.007](https://doi.org/10.1093/qjmed/hcab097.007)]
- 12 **You N**, Wang Z, Wu K, Wang L, Li J, Zheng L. Laparoscopic surgical management of hepatocellular carcinoma patients with diaphragmatic involvement. *Surg Endosc* 2023; **37**: 358-363 [PMID: [35948806](https://pubmed.ncbi.nlm.nih.gov/35948806/) DOI: [10.1007/s00464-022-09491-5](https://doi.org/10.1007/s00464-022-09491-5)]
- 13 **Singh V**, Sinha RJ, Sankhwar SN, Kumar S, Mehrotra B, Puri M, Sengottayan VK. Primary hepatocellular carcinoma in ectopic liver masquerading as left adrenal carcinoma: a rare occurrence. *Rare Tumors* 2010; **2**: e35 [PMID: [21139837](https://pubmed.ncbi.nlm.nih.gov/21139837/) DOI: [10.4081/rt.2010.e35](https://doi.org/10.4081/rt.2010.e35)]



Published by **Baishideng Publishing Group Inc**
7041 Koll Center Parkway, Suite 160, Pleasanton, CA 94566, USA

Telephone: +1-925-3991568

E-mail: bpgoffice@wjgnet.com

Help Desk: <https://www.f6publishing.com/helpdesk>

<https://www.wjgnet.com>

