

# World Journal of *Gastroenterology*

*World J Gastroenterol* 2023 August 21; 29(31): 4706-4814



## Contents

Weekly Volume 29 Number 31 August 21, 2023

## REVIEW

- 4706 Dysregulated microRNAs as a biomarker for diagnosis and prognosis of hepatitis B virus-associated hepatocellular carcinoma

Zhang MH, Yuan YF, Liu LJ, Wei YX, Yin WY, Zheng LZY, Tang YY, Lv Z, Zhu F

## MINIREVIEWS

- 4736 Diabetes as a consequence of acute pancreatitis

Charley E, Dinner B, Pham K, Vyas N

## ORIGINAL ARTICLE

## Basic Study

- 4744 Huangqin decoction alleviates lipid metabolism disorders and insulin resistance in nonalcoholic fatty liver disease by triggering Sirt1/NF- $\kappa$ B pathway

Yan BF, Pan LF, Quan YF, Sha Q, Zhang JZ, Zhang YF, Zhou LB, Qian XL, Gu XM, Li FT, Wang T, Liu J, Zheng X

## Retrospective Cohort Study

- 4763 Gastric cancer incidence based on endoscopic Kyoto classification of gastritis

Toyoshima O, Nishizawa T, Yoshida S, Matsuno T, Fujisawa G, Toyoshima A, Ebinuma H, Fujishiro M, Saito Y, Suzuki H

## Observational Study

- 4774 Dental evaluation is helpful in the differentiation of functional heartburn and gastroesophageal reflux disease

Helle K, Árok AZ, Ollé G, Antal M, Rosztóczy A

## Randomized Controlled Trial

- 4783 Poly(A)-specific ribonuclease protein promotes the proliferation, invasion and migration of esophageal cancer cells

Zhang FW, Xie XW, Chen MH, Tong J, Chen QQ, Feng J, Chen FT, Liu WQ

## META-ANALYSIS

- 4797 Circulating copeptin level and the clinical prognosis of patients with chronic liver disease

Tan HQ, Zhao M, Huang Z, Liu Y, Li H, Ma LH, Liu JY

## CASE REPORT

- 4809 Inherited CHEK2 p.H371Y mutation in solitary rectal ulcer syndrome among familial patients: A case report

He CC, Wang SP, Zhou PR, Li ZJ, Li N, Li MS

**ABOUT COVER**

Editorial Board Member of *World Journal of Gastroenterology*, De-Liang Fu, MD, PhD, Chief Doctor, Professor, Department of Pancreatic Surgery, Pancreatic Disease Institute, Huashan Hospital, Shanghai 200040, China. surgeonfu@163.com

**AIMS AND SCOPE**

The primary aim of *World Journal of Gastroenterology* (WJG, *World J Gastroenterol*) is to provide scholars and readers from various fields of gastroenterology and hepatology with a platform to publish high-quality basic and clinical research articles and communicate their research findings online. WJG mainly publishes articles reporting research results and findings obtained in the field of gastroenterology and hepatology and covering a wide range of topics including gastroenterology, hepatology, gastrointestinal endoscopy, gastrointestinal surgery, gastrointestinal oncology, and pediatric gastroenterology.

**INDEXING/ABSTRACTING**

The WJG is now abstracted and indexed in Science Citation Index Expanded (SCIE, also known as SciSearch®), Current Contents/Clinical Medicine, Journal Citation Reports, Index Medicus, MEDLINE, PubMed, PubMed Central, Scopus, Reference Citation Analysis, China National Knowledge Infrastructure, China Science and Technology Journal Database, and Superstar Journals Database. The 2023 edition of Journal Citation Reports® cites the 2022 impact factor (IF) for WJG as 4.3; IF without journal self cites: 4.1; 5-year IF: 5.3; Journal Citation Indicator: 0.82; Ranking: 33 among 93 journals in gastroenterology and hepatology; and Quartile category: Q2. The WJG's CiteScore for 2021 is 8.3 and Scopus CiteScore rank 2022: Gastroenterology is 22/149.

**RESPONSIBLE EDITORS FOR THIS ISSUE**

Production Editor: Yi-Xuan Cai; Production Department Director: Xiang Li; Editorial Office Director: Jia-Ru Fan.

**NAME OF JOURNAL**

*World Journal of Gastroenterology*

**ISSN**

ISSN 1007-9327 (print) ISSN 2219-2840 (online)

**LAUNCH DATE**

October 1, 1995

**FREQUENCY**

Weekly

**EDITORS-IN-CHIEF**

Andrzej S Tarnawski

**EDITORIAL BOARD MEMBERS**

<http://www.wjgnet.com/1007-9327/editorialboard.htm>

**PUBLICATION DATE**

August 21, 2023

**COPYRIGHT**

© 2023 Baishideng Publishing Group Inc

**INSTRUCTIONS TO AUTHORS**

<https://www.wjgnet.com/bpg/gerinfo/204>

**GUIDELINES FOR ETHICS DOCUMENTS**

<https://www.wjgnet.com/bpg/GerInfo/287>

**GUIDELINES FOR NON-NATIVE SPEAKERS OF ENGLISH**

<https://www.wjgnet.com/bpg/gerinfo/240>

**PUBLICATION ETHICS**

<https://www.wjgnet.com/bpg/GerInfo/288>

**PUBLICATION MISCONDUCT**

<https://www.wjgnet.com/bpg/gerinfo/208>

**ARTICLE PROCESSING CHARGE**

<https://www.wjgnet.com/bpg/gerinfo/242>

**STEPS FOR SUBMITTING MANUSCRIPTS**

<https://www.wjgnet.com/bpg/GerInfo/239>

**ONLINE SUBMISSION**

<https://www.f6publishing.com>





## Retrospective Cohort Study

# Gastric cancer incidence based on endoscopic Kyoto classification of gastritis

Osamu Toyoshima, Toshihiro Nishizawa, Shuntaro Yoshida, Tatsuya Matsuno, Gota Fujisawa, Akira Toyoshima, Hirotoishi Ebinuma, Mitsuhiro Fujishiro, Yutaka Saito, Hidekazu Suzuki

**Specialty type:** Gastroenterology and hepatology

**Provenance and peer review:** Unsolicited article; Externally peer reviewed.

**Peer-review model:** Single blind

**Peer-review report's scientific quality classification**

Grade A (Excellent): 0  
Grade B (Very good): B  
Grade C (Good): C  
Grade D (Fair): 0  
Grade E (Poor): 0

**P-Reviewer:** Ma L, China;  
Senchukova M, Russia

**Received:** June 3, 2023

**Peer-review started:** June 3, 2023

**First decision:** July 10, 2023

**Revised:** July 20, 2023

**Accepted:** July 28, 2023

**Article in press:** July 28, 2023

**Published online:** August 21, 2023



**Osamu Toyoshima, Shuntaro Yoshida, Tatsuya Matsuno, Gota Fujisawa,** Department of Gastroenterology, Toyoshima Endoscopy Clinic, Tokyo 157-0066, Japan

**Toshihiro Nishizawa, Hirotoishi Ebinuma,** Department of Gastroenterology and Hepatology, International University of Health and Welfare, Narita Hospital, Narita 286-8520, Japan

**Akira Toyoshima,** Department of Colorectal Surgery, Japanese Red Cross Medical Center, Tokyo 150-8935, Japan

**Mitsuhiro Fujishiro,** Department of Gastroenterology, Graduate School of Medicine, The University of Tokyo, Tokyo 113-8655, Japan

**Yutaka Saito,** Division of Endoscopy, National Cancer Center Hospital, Tokyo 104-0045, Japan

**Hidekazu Suzuki,** Division of Gastroenterology and Hepatology, Department of Internal Medicine, Tokai University School of Medicine, Isehara 259-1193, Japan

**Corresponding author:** Toshihiro Nishizawa, MD, PhD, Professor, Department of Gastroenterology and Hepatology, International University of Health and Welfare, Narita Hospital, Hatakedo 852, Narita, Chiba, Narita 286-8520, Japan. [nisizawa@kf7.so-net.ne.jp](mailto:nisizawa@kf7.so-net.ne.jp)

## Abstract

### BACKGROUND

Gastric cancer (GC) incidence based on the endoscopic Kyoto classification of gastritis has not been systematically investigated using time-to-event analysis.

### AIM

To examine GC incidence in an endoscopic surveillance cohort.

### METHODS

This study was retrospectively conducted at the Toyoshima Endoscopy Clinic. Patients who underwent two or more esophagogastroduodenoscopies were enrolled. GC incidence was based on Kyoto classification scores, such as atrophy, intestinal metaplasia (IM), enlarged folds (EFs), nodularity, diffuse redness (DR), and total Kyoto scores. Hazard ratios (HRs) adjusted for age and sex were calculated using a Cox hazard model.

### RESULTS

A total of 6718 patients were enrolled (median age 54.0 years; men 44.2%). During the follow-up period (max 5.02 years; median 2.56 years), GC developed in 34 patients. The average frequency of GCs per year was 0.19%. Kyoto atrophy scores 1 [HR with score 0 as reference: 3.66, 95% confidence interval (CI): 1.06 to 12.61], 2 (11.60, 3.82-35.27), IM score 2 (9.92, 4.37-22.54), EF score 1 (4.03, 1.63-9.96), DR scores 1 (6.22, 2.65-14.56), and 2 (10.01, 3.73-26.86) were associated with GC incidence, whereas nodularity scores were not. The total Kyoto scores of 4 (HR with total Kyoto scores 0-1 as reference: 6.23, 95%CI: 1.93 to 20.13,  $P = 0.002$ ) and 5-8 (16.45, 6.29-43.03,  $P < 0.001$ ) were more likely to develop GC, whereas the total Kyoto scores 2-3 were not. The HR of the total Kyoto score for developing GC per 1 rank was 1.75 (95%CI: 1.46 to 2.09,  $P < 0.001$ ).

## CONCLUSION

A high total Kyoto score ( $\geq 4$ ) was associated with GC incidence. The endoscopy-based diagnosis of gastritis can stratify GC risk.

**Key Words:** Gastric cancer; Gastritis; Endoscopy; Atrophy; Intestinal metaplasia; Kyoto classification

©The Author(s) 2023. Published by Baishideng Publishing Group Inc. All rights reserved.

**Core Tip:** A high total Kyoto score ( $\geq 4$ ) was associated with gastric cancer (GC) incidence. Adjusted hazard ratios (HRs) for the total Kyoto scores of 4 and 5-8 were high at 6.23 and 16.45, respectively, compared to the total Kyoto scores of 0-1. The HR of the total Kyoto score for developing GC per 1 rank was 1.75.

**Citation:** Toyoshima O, Nishizawa T, Yoshida S, Matsuno T, Fujisawa G, Toyoshima A, Ebinuma H, Fujishiro M, Saito Y, Suzuki H. Gastric cancer incidence based on endoscopic Kyoto classification of gastritis. *World J Gastroenterol* 2023; 29(31): 4763-4773

**URL:** <https://www.wjgnet.com/1007-9327/full/v29/i31/4763.htm>

**DOI:** <https://dx.doi.org/10.3748/wjg.v29.i31.4763>

## INTRODUCTION

Gastric cancer (GC) is a global health problem and the third most common cause of cancer-related deaths worldwide[1]. *Helicobacter pylori* (*H. pylori*) infection is estimated to account for 89% of GC cases, and *H. pylori*-related gastritis is a precursor of GC[2-6]. Evaluation of *H. pylori*-related gastritis is clinically important because it allows for the risk stratification of GC[2,7-9]. Endoscopy detects early GCs and precisely diagnoses gastritis. Periodic endoscopic screening can reduce deaths from GC[10]. Recent advances in endoscopic technology allow for more accurate endoscopic diagnosis of gastritis[11,12].

The endoscopy-based Kyoto classification of gastritis was advocated by the Japan Society for Gastrointestinal Endoscopy in 2013. This classification aims to ensure that the endoscopic diagnosis of gastritis is unified and matched with the histopathology[13]. Recently, the Kyoto classification has been widely used in clinical practice and vigorously studied worldwide[14,15]. To assess GC risk, the Kyoto classification individually scores five *H. pylori*-related gastritis findings, such as atrophy, intestinal metaplasia (IM), enlarged fold (EF), nodularity, and diffuse redness (DR), and defines their sum as the total Kyoto score.

Several investigations have clarified that not only individual Kyoto scores but also the total Kyoto score are associated with *H. pylori* infection and GC risks[14]. For example, the total Kyoto score was associated with *H. pylori* infection, presence of GC[16-19], and GC risk indicators, such as serum pepsinogen titer, serum *H. pylori* antibody titer, histological distribution of neutrophil infiltration in the gastric mucosa, and genotype of the single nucleotide polymorphism. Collectively, total Kyoto scores of 0,  $\geq 2$ , and  $\geq 4$  indicated a normal stomach, *H. pylori*-infected gastritis, and gastritis at risk for GC, respectively[14].

To date, GC incidence based on the Kyoto classification scores has not been systematically investigated using time-to-event analysis. Therefore, we examined GC incidence according to the five individual Kyoto scores and the total Kyoto score in the endoscopic surveillance cohort and verified the GC risks of endoscopic gastritis in Japan, which is a high GC morbidity area.

## MATERIALS AND METHODS

### Study design and overview

This cohort study was retrospectively conducted at the Toyoshima Endoscopy Clinic. We obtained data from the Toyoshima Endoscopy Clinic Database. This study was approved by the institutional review board of the Yoyogi Mental Clinic (approval no. RKK227). Written informed consent was obtained from patients at the time of esophagogastroduodenoscopy (EGD) to use their data for research purposes. The study's protocol was published on our institute's website (

[www.ichou.com](http://www.ichou.com)) so that patients could opt out of the study. All clinical investigations were conducted in accordance with the ethical guidelines of the Declaration of Helsinki.

### Patients

This study enrolled patients who underwent two or more EGDs at the Toyoshima Endoscopy Clinic, an urban area in Tokyo, Japan, between April 2017 and April 2022. We excluded patients with a previous surgical gastrectomy at baseline and those who underwent the last EGD within one month after the index EGD. The indications for the index EGD included screening, surveillance for gastritis or other upper gastrointestinal diseases, and examination for symptoms or abnormal findings on other tests. *H. pylori* status was determined using serum anti-*H. pylori* antibodies, urea breath test, histology, and/or endoscopy.

### Kyoto classification score

In the Kyoto classification, the total Kyoto score was developed as a GC risk score[14]. The total Kyoto score is calculated as the sum of the following five Kyoto scores: Atrophy, IM, EF, nodularity, and DR, and ranges from 0 to 8 (Supplementary Table 1). Atrophy was classified based on the extent of mucosal atrophy using the Kimura-Takemoto classification[20]. Non-atrophy and Closed I, Closed II and III, and Open I to III were scored as atrophy scores of 0, 1, and 2, respectively. The IM commonly appears as a grayish-white, slightly elevated patch. IM scores of 0, 1, and 2 were defined as the absence of IM, IM limited to the antrum, and IM extending into the corpus, respectively. EF was defined as a width of  $\geq 5$  mm in the greater curvature of the corpus, which was not flattened by stomach insufflation. The absence and presence of EF were scored as 0 and 1, respectively. Nodularity was identified by a miliary pattern resembling “goose flesh”, which was typically located in the antrum. The absence and presence of nodularity were scored 0 and 1, respectively. DR indicated uniform redness observed in the non-atrophic mucosa, mainly in the greater curvature of the corpus. The regular arrangement of collecting venules (RAC) in the corpus appears as numerous dots, which are starfish-like shapes in close view. DR scores of 0, 1, and 2 were defined as the absence of DR, mild DR and/or DR with partial RAC, and severe DR without RAC, respectively[14].

### EGD

EGDs were performed by gastrointestinal endoscopists using the Olympus' (Tokyo, Japan) endoscopic system (EVIS X1 or LUCERA ELITE) and endoscope (GIF-XZ1200, GIF-1200N, GIF-HQ290, GIF-H290Z, or GIF-XP290N). The T-File System (STS-MEDIC Inc., Tokyo, Japan) was used to file endoscopic images and document endoscopic findings.

The Kyoto classification scores were assessed using white light imaging without magnification. The endoscopists diagnosed the Kyoto classification scores on-site during EGD, and it was retrospectively reviewed by experienced endoscopists. Endoscopists performed EGDs after learning from textbooks and journal articles on the Kyoto classification of gastritis[14,21].

### GC

GC was histologically diagnosed based on biopsy or resected specimens. GC morphology and histology were classified based on the Japanese classification of gastric carcinoma[22] and Lauren's classification[23], respectively.

### Outcomes

This cohort study evaluated GC incidence based on patients' age, sex, *H. pylori* status, and endoscopic Kyoto classification scores of gastritis, such as atrophy, IM, EF, nodularity, DR, and total Kyoto scores. The primary outcome was GC incidence according to the total Kyoto score. We performed a time-to-event analysis with the start time as the date of index EGD. Data were censored on the date of the last EGD. The effects of Kyoto classification scores on GC development were estimated. The total Kyoto scores were categorized into 4 (*i.e.*, 0-1, 2-3, 4, and 5-8) based on the frequency of GC increasing stepwise with the total Kyoto scores of 0-1, 2-3, and  $\geq 4$  in a cross-sectional study[24] and the number of patients in this study. The secondary outcomes were GC incidence according to the Kyoto atrophy, IM, EF, nodularity, and DR scores.

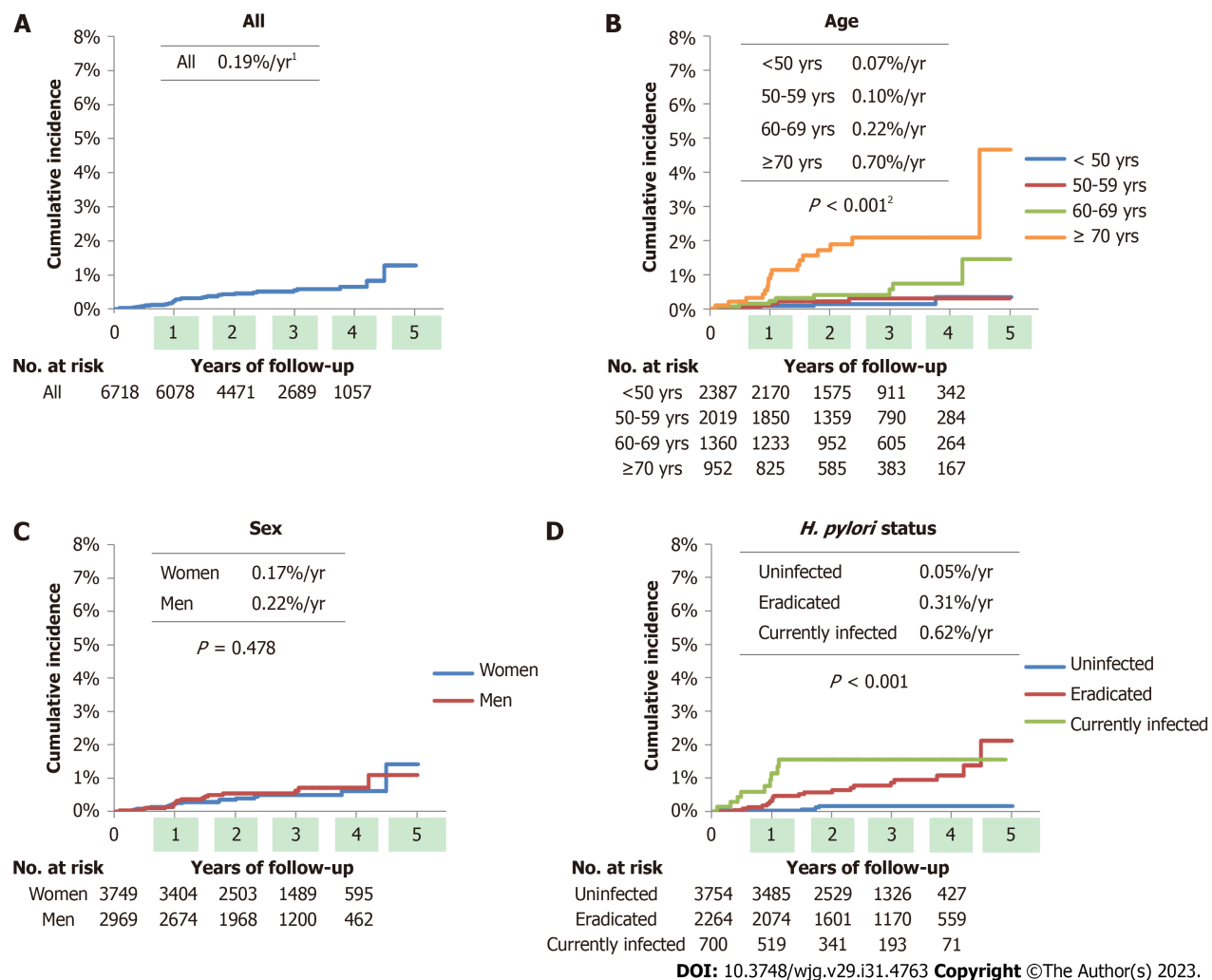
### Statistical analysis

Baseline characteristics were compared between GC and non-GC groups using binomial logistic regression model. Kaplan-Meier curves were constructed according to patient age, sex, *H. pylori* status, and Kyoto classification scores (*i.e.*, atrophy, IM, EF, nodularity, DR, and the total Kyoto scores). Statistical differences were estimated using the log-rank tests. The average frequency of GCs per year was calculated by dividing the number of events by the total person-years of observation. Hazard ratios (HRs) with 95% confidence intervals (CIs) for GC development were estimated using the Cox proportional hazards regression model. In multivariate analysis, HRs were adjusted for patient age and sex. A *P* value  $< 0.05$  (two-sided) was defined as statistically significant. Statistical analysis was conducted using BellCurve for Excel version 4.03 (Social Survey Research Information Co., Ltd., Tokyo, Japan).

## RESULTS

### Patient enrollment

A total of 30585 EGDs in 16969 patients were performed during the study period. Six thousand seven hundred forty-four



**Figure 1** Cumulative incidence of gastric cancer according to patient demographic characteristics. A-D: Kaplan-Meier curves of gastric cancer development for all patients (A), according to age (B), sex (C), and *Helicobacter pylori* status (D). <sup>1</sup>The average frequency of gastric cancer per year. <sup>2</sup> $P$  values were calculated using a log-rank test.

patients underwent two or more EGDs. Of these, 19 patients with a previous surgical gastrectomy and 7 with a follow-up period of less than 1 mo were excluded. A total of 6718 patients were enrolled.

The baseline patient characteristics are shown in Table 1. The median age of the patients was 54 years with the interquartile range (IQR) of 46-64 years. Men accounted for 44.2% of the cases. The proportion of patients with *H. pylori* status of uninfected, eradicated, and currently infected was 55.9%, 33.7%, and 10.4%, respectively. Patients were followed up for up to 5.02 years (median 2.56 years, IQR 1.74-3.64 years). The median (IQR) of Kyoto classification scores were 0 (0-1) for atrophy; 0 (0-0) for IM, EF, nodularity, and DR; and 0 (0-2) for total Kyoto. Supplementary Table 2 is shown with the mean and standard deviation. During the follow-up period, 37 GCs occurred in 34 patients. The characteristics of GCs are presented in Table 2. All GCs were superficial and within the submucosal depth. Lauren's intestinal type made up 89.1% of GCs.

### GC incidence

Kaplan-Meier curves of GC development according to patient demographic characteristics are shown in Figure 1. In this study, the average frequency of GCs was 0.19%/year. Age and *H. pylori* status were associated with GC incidence (both  $P < 0.001$ ), whereas sex was not.

Figures 2A-E show the cumulative incidence using the Kaplan-Meier method for each Kyoto classification score. Atrophy, IM, EF, and DR scores were associated with GC development (all  $P < 0.001$ ), whereas nodularity was not. The average frequencies of GCs per year were 0.04%, 0.17%, and 0.73% for atrophy scores of 0, 1, and 2; 0.07%, 0.25%, and 1.10% for IM scores of 0, 1, and 2; 0.17% and 0.92% for EF scores of 0 and 1; and 0.06%, 0.55%, and 0.74% for DR scores of 0, 1, and 2, respectively. The total Kyoto score was associated with GC development ( $P < 0.001$ ), as shown in Figure 2F. The average frequencies of GCs were 0.05, 0.07, 0.47, and 1.27% per year for the total Kyoto scores of 0-1, 2-3, 4, and 5-8, respectively.

**Table 1 Demographic characteristics and endoscopic findings of the patient at baseline**

	All	Gastric cancer	Non-gastric cancer	P value <sup>1</sup>
No.	6718	34	6684	
Age, median (IQR), yr	54 (46-64)	69.5 (57.8-73.8)	54 (46-64)	< 0.001
Male sex, No. (%)	2969 (44.2)	17 (50.0)	2952 (44.2)	0.495
<i>H. pylori</i> status, No. (%)				< 0.001
Uninfected	3754 (55.9)	5 (14.7)	3749 (56.1)	
Eradicated	2264 (33.7)	20 (58.8)	2244 (33.6)	
Currently infected	700 (10.4)	9 (26.5)	691 (10.3)	
Duration of follow up, median (IQR), yr	2.56 (1.74-3.64)	1.03 (0.85-1.78)	2.57 (1.76-3.64)	< 0.001
No. EGD per patient, median (IQR)	2 (2-4)	2 (2-3)	2 (2-4)	0.652
Kyoto classification score, median (IQR)				
Atrophy	0 (0-1)	2 (1-2)	0 (0-1)	< 0.001
Intestinal metaplasia	0 (0-0)	2 (0-2)	0 (0-0)	< 0.001
Enlarged folds	0 (0-0)	0 (0-0)	0 (0-0)	< 0.001
Nodularity	0 (0-0)	0 (0-0)	0 (0-0)	0.916
Diffuse redness	0 (0-0)	1 (1-1)	0 (0-0)	< 0.001
Total Kyoto	0 (0-2)	5 (4-5)	0 (0-2)	< 0.001

<sup>1</sup>P values were calculated using binomial logistic regression model.

IQR: Interquartile range; EGD: Esophagogastroduodenoscopy; *H. pylori*: *Helicobacter pylori*.

**Table 2 Characteristics of gastric cancers**

	<i>n</i>
Gastric cancer patient	34
Gastric cancer lesion	37
Morphological type <sup>1</sup>	
Superficial elevated (0-IIa)	7
Superficial flat (0-IIb)	5
Superficial depressed (0-IIc)	25
Depth	
Mucosa	33
Submucosa	4
Lauren's histological type	
Diffuse	4
Intestinal	33

<sup>1</sup>According to the Japanese classification of gastric carcinoma[22].

### Multivariate analysis of GC incidence

Table 3 provides the crude and adjusted HRs for GC development according to Kyoto classification scores. Multivariate analysis showed that atrophy scores 1 (adjusted HR with score 0 as reference: 3.66, 95%CI: 1.06 to 12.61), 2 (11.60, 3.82-35.27), IM score 2 (9.92, 4.37-22.54), EF score 1 (4.03, 1.63-9.96), DR scores 1 (6.22, 2.65-14.56), and 2 (10.01, 3.73-26.86) were significantly associated with GC incidence, independent of patient age and sex, whereas nodularity score was not.

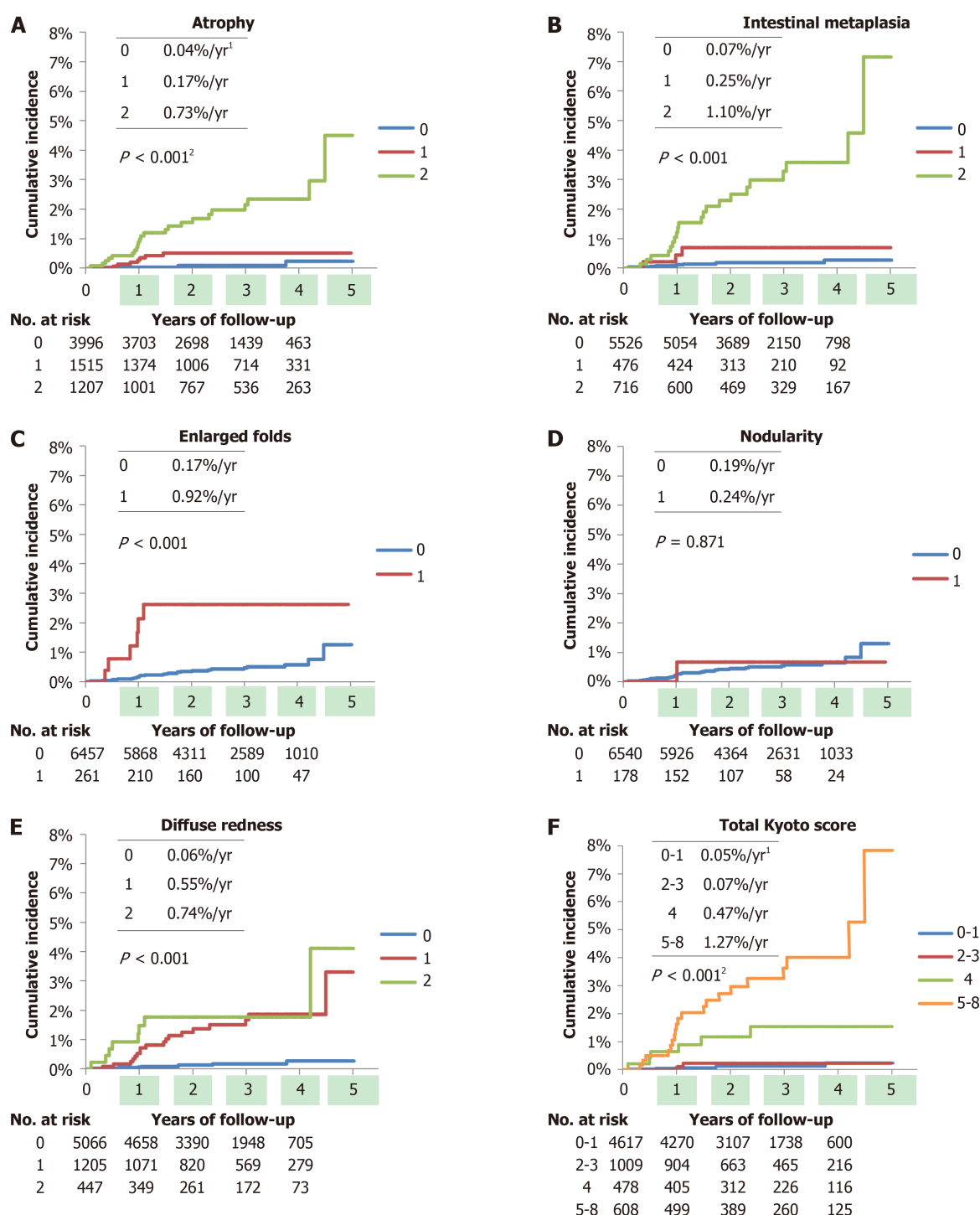
The total Kyoto scores of 4 (adjusted HR with total Kyoto scores 0-1 as reference: 6.23, 95%CI: 1.93 to 20.13, *P* = 0.002) and 5-8 (16.45, 6.29-43.03, *P* < 0.001) were more likely to develop GC, whereas the total Kyoto scores of 2-3 were not. In



Table 3 Univariate and multivariate analysis of gastric cancer development

	GC patients, No.	Non-GC patients, No.	Crude HR <sup>1</sup>	95%CI	P value	Adjusted HR <sup>1,2</sup>	95%CI	P value
Age (yr)								
< 50	4	2383	Reference					
50-59	5	2014	1.48	0.40-5.50	0.562			
60-69	8	1352	3.37	1.01-11.19	0.047			
≥ 70	17	935	10.75	3.62-31.96	< 0.001			
Sex								
Women	17	3732	Reference					
Men	17	2952	1.27	0.65-2.48	0.488			
<i>H. pylori</i> status								
Uninfected	5	3749	Reference			Reference		
Eradicated	20	2244	6.00	2.25-16.05	< 0.001	3.81	1.40-10.38	0.009
Currently infected	9	691	11.60	3.88-34.64	< 0.001	9.53	3.17-28.65	< 0.001
Atrophy								
0	4	3992	Reference			Reference		
1	7	1508	4.40	1.29-15.06	0.018	3.66	1.06-12.61	0.040
2	23	1184	19.02	6.56-55.12	< 0.001	11.60	3.82-35.27	< 0.001
Intestinal metaplasia								
0	10	5516	Reference			Reference		
1	3	473	3.42	0.94-12.44	0.062	2.25	0.60-8.43	0.228
2	21	695	16.01	7.52-34.05	< 0.001	9.92	4.37-22.54	< 0.001
Enlarged folds								
0	28	6429	Reference			Reference		
1	6	255	5.41	2.23-13.10	< 0.001	4.03	1.63-9.96	0.003
Nodularity								
0	33	6507	Reference			Reference		
1	1	177	1.18	0.16-8.62	0.872	2.51	0.33-18.86	0.372
Diffuse redness								
0	8	5058	Reference			Reference		
1	18	1187	9.05	3.92-20.85	< 0.001	6.22	2.65-14.56	< 0.001
2	8	439	12.26	4.60-32.68	< 0.001	10.01	3.73-26.86	< 0.001
Total Kyoto								
0-1	6	4615	Reference			Reference		
2-3	2	1008	1.48	0.30-7.34	0.631	1.12	0.22-5.63	0.887
4	6	473	9.54	3.07-29.62	< 0.001	6.23	1.93-20.13	0.002
5-8	20	588	25.58	10.25-63.84	< 0.001	16.45	6.29-43.03	< 0.001

<sup>1</sup>Hazard ratios were calculated using the Cox proportional hazards model.<sup>2</sup>Hazard ratios were adjusted for age and sex.GC: Gastric cancer; HR: Hazard ratio; CI: Confidence interval; *H. pylori*: *Helicobacter pylori*.per 1 rank analysis, an adjusted HR of the total Kyoto score for developing GC was 1.75 (95%CI: 1.46 to 2.09,  $P < 0.001$ ).



DOI: 10.3748/wjg.v29.i31.4763 Copyright ©The Author(s) 2023.

**Figure 2 Cumulative incidence of gastric cancer according to the Kyoto classification scores.** A-E: Kaplan-Meier curves of gastric cancer development according to atrophy (A), intestinal metaplasia (B), enlarged folds (C), nodularity (D), and diffuse redness (E) scores, respectively; F: Kaplan-Meier curves of gastric cancer development according to total Kyoto scores. <sup>1</sup>The average frequency of gastric cancer per year. <sup>2</sup> $P$  values were calculated using a log-rank test.

## DISCUSSION

We found that high total Kyoto scores, especially  $\geq 4$ , were associated with GC incidence. The adjusted HR of the total Kyoto score for GC development was 1.75 per 1 rank analysis. Additionally, adjusted HRs for the total Kyoto scores of 4 and 5-8 were high at 6.23 and 16.45, respectively, compared to the total Kyoto scores of 0-1. The total Kyoto score was associated with the cumulative incidence of GC ( $P < 0.001$ ). The average frequencies of GCs per year increased with the total Kyoto score (0.05%, 0.07%, 0.47%, and 1.27% for the total Kyoto scores of 0-1, 2-3, 4, and 5-8, respectively). This is the first report that shows that high total Kyoto scores represent GC risks in a time-to-event analysis. This finding is consistent with those of several previous studies. In cross-sectional studies, we and Lin *et al*[19] reported that the odds

ratios of the total Kyoto score for GC were 1.6 and 1.5 per 1 rank, respectively[18]. Liu *et al*[24] indicated an increased trend of GC frequency in patients with total Kyoto scores of 0-1, 2-3, and  $\geq 4$ . Some investigators showed that the mean total Kyoto scores of the patients with GC, *H. pylori*-infected GC, and *H. pylori*-eradicated GC were 4.0-4.6, 4.8-5.6, and 4.2, respectively[18,25,26]. Taken together, a total Kyoto score  $\geq 4$  was available for determining GC risks.

This cohort study demonstrated that patients with endoscopy-based atrophy, IM, EF, and DR are more likely to develop GC. In contrast, nodularity was not associated with GC incidence. Endoscopic atrophy has been shown to be a predictor of GC development. Shichijo *et al*[27] described a significantly higher adjusted HR of severe atrophy for developing GC as 9.3, while we identified significantly higher adjusted HRs of Kyoto atrophy scores 1 and 2 as 3.7 and 11.6, respectively. Several cohort studies have shown that severe endoscopic atrophy is associated with a high incidence of GC, especially in patients who have undergone *H. pylori* eradication[9,27,28]. These studies revealed that the average frequencies of GCs per year for non-to-mild, moderate, and severe atrophy were 0.06%-0.15%, 0.12%-0.34%, and 0.31%-1.60%, respectively. Similarly, our study showed that the average frequencies of GCs per year for total Kyoto scores of 0, 1, and 2 were 0.04%, 0.17%, and 0.73%, respectively. Since more than half of the study patients were uninfected with *H. pylori*, our study may present a lower GC incidence in patients with a Kyoto atrophy score of 0. Two meta-analyses also showed that a high Kyoto atrophy score provided a high-risk ratio of 2.8-8.0[29,30]. Thus, our study results are in line with those of previous studies.

Although the risk of GC in histological IM has been well studied[2,8,27,31,32], few studies have examined GC risks associated with endoscopic IM. A high Kyoto IM score has been identified as a risk factor for GC, especially multiple GC [14,18]. This study revealed that endoscopic corpus IM was associated with GC development (adjusted HR: 9.92), which is supported by Sakitani *et al*[33], who clarified histological corpus IM as a predictor of GC. The consistency of IM between endoscopy and histology has been demonstrated[13]; we successfully verified endoscopic IM as a risk factor for GC using event history analysis.

Watanabe *et al*[34] provided an adjusted HR of EF for GC development as high as 43.3, whereas our study's adjusted HR was 4.03. These results are similar; however, the difference in HRs between them may be attributed to the inclusion of many *H. pylori*-uninfected individuals in the study population. However, whether nodularity is a risk factor for GC remains controversial. Nodularity has been reported to be a juvenile and histologically diffuse-type GC risk[35,36], whereas we have shown in a cross-sectional study that the odds ratio for GC of nodularity is low at 0.5[18]. After adjusting for age and sex, no association between nodularity and GC was observed. Although nodularity decreases with age[37], the risk of intestinal-type GC increases with age. Furthermore, intestinal-type cancers are more common than diffuse-type cancers. Therefore, age offsets the association of nodularity with GC, especially in older generations, although nodularity is associated with diffuse-type GC in the young generation[35]. As the association between nodularity and the risk of developing GC is still debated, nodularity might be listed separately. For example, the total Kyoto classification score for atrophy 1, IM 0, EF 1, nodularity 1, and DR 1 might be reported as 3 + 1 instead of 4.

Several studies have reported that DR is strongly associated with *H. pylori* infection[15,38-40], but little is known about the association between DR and GC incidence. This study identified Kyoto DR scores of 1 and 2 as indicators of GC incidence (adjusted HRs: 6.22 and 10.01, respectively). Since DR presents inflammatory cell infiltration caused by *H. pylori* [13] and *H. pylori* infection is a definite risk factor for GC[2,3], DR is expressed as a GC risk. Additionally, since the Kyoto DR score includes RAC as a negative factor and RAC is inversely associated with GC development[41], a high Kyoto DR score may be associated with high GC incidence.

This study has some limitations. First, this was a single-center, retrospective cohort study. Although the endoscopy data were well-organized, multi-center, prospective studies are warranted. Second, this study was conducted only in areas with a high GC prevalence in Asia. Therefore, studies in Western countries are warranted. Third, the total Kyoto score has shortcomings in the scoring design, which simply adds five individual Kyoto scores[14]. IM is associated with a high risk of intestinal-type GC but a low risk of diffuse-type GC[18]. In addition, EF and nodularity are high risks for diffuse-type GC but low risks for intestinal-type GC. Therefore, the evaluation of GC risk using a scoring system that individually predicts the risks of intestinal- and diffuse-type GCs is needed.

## CONCLUSION

In conclusion, a high total Kyoto score of  $\geq 4$  was associated with GC incidence in a cohort study. The endoscopy-based diagnosis of gastritis can stratify GC risk.

## ARTICLE HIGHLIGHTS

### Research background

The Japan Gastroenterological Endoscopy Society advocated the Kyoto classification, a new grading system for endoscopic gastritis in 2013.

### Research motivation

Although a high Kyoto score is believed to reflect an increased gastric cancer (GC) risk, it has not been systematically investigated using time-to-event analysis.

## Research objectives

We examined GC incidence according to the total Kyoto score in the endoscopic surveillance cohort and verified the GC risks of endoscopic gastritis.

## Research methods

Patients who underwent two or more esophagogastroduodenoscopies were enrolled. GC incidence was based on Kyoto classification scores. Hazard ratios (HRs) adjusted for age and sex were calculated using a Cox hazard model.

## Research results

A total of 6718 patients were enrolled. The annual incidence rate of GC was 0.19%. The total Kyoto scores of 4 [HR with total Kyoto scores 0-1 as reference: 6.23, 95% confidence interval (CI): 1.93 to 20.13,  $P = 0.002$ ] and 5-8 (16.45, 6.29-43.03,  $P < 0.001$ ) were more likely to develop GC, whereas the total Kyoto scores 2-3 were not. The HR of the total Kyoto score for developing GC per 1 rank was 1.75 (95%CI: 1.46 to 2.09,  $P < 0.001$ ).

## Research conclusions

A total Kyoto score  $\geq 4$  could predict GC risk. The endoscopic Kyoto classification of gastritis can stratify GC risk.

## Research perspectives

This was a single-center, retrospective cohort study, and multi-center, prospective studies are warranted.

## ACKNOWLEDGEMENTS

We would like to thank Shido Inc. ([www.Shido.co.jp](http://www.Shido.co.jp)) for consulting the statistical analysis. We would like to thank clinical laboratory engineer Tadahiro Yamakawa for managing the endoscopy database of the Toyoshima Endoscopy Clinic.

## FOOTNOTES

**Author contributions:** Toyoshima O, Nishizawa T, Yoshida S, Matsuno T, Fujisawa G, and Toyoshima A contributed to the conception of article; Toyoshima O drafted the article; Toyoshima O, Nishizawa T, Yoshida S, and Matsuno T involved in the review of endoscopic images; Toyoshima O contributed to the statistical analysis; Nishizawa T edited the article; Toyoshima O, Nishizawa T, Yoshida S, Matsuno T, Fujisawa G, Toyoshima A, Ebinuma H, Fujishiro M, Saito Y, and Suzuki H contributed to the critical review; and all authors approved the final manuscript.

**Institutional review board statement:** This study was approved by the institutional review board of the Yoyogi Mental Clinic (approval no. RKK227).

**Informed consent statement:** Written informed consent was obtained from patients at the time of esophagogastroduodenoscopy to use their data for research purposes. The study's protocol was published on our institute's website ([www.ichou.com](http://www.ichou.com)) so that patients could opt out of the study.

**Conflict-of-interest statement:** All the authors report no relevant conflicts of interest for this article.

**Data sharing statement:** No additional data are available.

**STROBE statement:** The authors have read the STROBE Statement-checklist of items, and the manuscript was prepared and revised according to the STROBE Statement-checklist of items.

**Open-Access:** This article is an open-access article that was selected by an in-house editor and fully peer-reviewed by external reviewers. It is distributed in accordance with the Creative Commons Attribution NonCommercial (CC BY-NC 4.0) license, which permits others to distribute, remix, adapt, build upon this work non-commercially, and license their derivative works on different terms, provided the original work is properly cited and the use is non-commercial. See: <https://creativecommons.org/licenses/by-nc/4.0/>

**Country/Territory of origin:** Japan

**ORCID number:** Osamu Toyoshima 0000-0002-6953-6079; Toshihiro Nishizawa 0000-0003-4876-3384; Shuntaro Yoshida 0000-0002-9437-9132; Tatsuya Matsuno 0000-0002-1935-3506; Gota Fujisawa 0000-0002-0218-200X; Akira Toyoshima 0000-0002-5697-6251; Hirotoishi Ebinuma 0000-0001-6604-053X; Mitsuhiro Fujishiro 0000-0002-4074-1140; Yutaka Saito 0000-0003-2296-8373; Hidekazu Suzuki 0000-0002-8994-6163.

**S-Editor:** Wang JJ

**L-Editor:** A

**P-Editor:** Xu ZH



## REFERENCES

- 1 **Bray F**, Ferlay J, Soerjomataram I, Siegel RL, Torre LA, Jemal A. Global cancer statistics 2018: GLOBOCAN estimates of incidence and mortality worldwide for 36 cancers in 185 countries. *CA Cancer J Clin* 2018; **68**: 394-424 [PMID: 30207593 DOI: 10.3322/caac.21492]
- 2 **Uemura N**, Okamoto S, Yamamoto S, Matsumura N, Yamaguchi S, Yamakido M, Taniyama K, Sasaki N, Schlemper RJ. Helicobacter pylori infection and the development of gastric cancer. *N Engl J Med* 2001; **345**: 784-789 [PMID: 11556297 DOI: 10.1056/NEJMoa001999]
- 3 **Plummer M**, Franceschi S, Vignat J, Forman D, de Martel C. Global burden of gastric cancer attributable to Helicobacter pylori. *Int J Cancer* 2015; **136**: 487-490 [PMID: 24889903 DOI: 10.1002/ijc.28999]
- 4 **Sugano K**. Effect of Helicobacter pylori eradication on the incidence of gastric cancer: a systematic review and meta-analysis. *Gastric Cancer* 2019; **22**: 435-445 [PMID: 30206731 DOI: 10.1007/s10120-018-0876-0]
- 5 **Choi Y**, Kim N, Yun CY, Choi YJ, Yoon H, Shin CM, Park YS, Ahn SH, Joong Park D, Lee HS, Kim JW, Lee KW, Chang W, Park JH, Lee YJ, Lee KH, Kim YH, Lee DH, Kim HH. Effect of Helicobacter pylori eradication after subtotal gastrectomy on the survival rate of patients with gastric cancer: follow-up for up to 15 years. *Gastric Cancer* 2020; **23**: 1051-1063 [PMID: 32361784 DOI: 10.1007/s10120-020-01076-2]
- 6 **Takahashi Y**, Yamamichi N, Kubota D, Shimamoto T, Nagao S, Sakuma N, Sakaguchi Y, Yakabi S, Tsuji Y, Wada R, Mitsushima T, Ichinose M, Fujishiro M. Risk factors for gastric cancer in Japan in the 2010s: a large, long-term observational study. *Gastric Cancer* 2022; **25**: 481-489 [PMID: 35067826 DOI: 10.1007/s10120-021-01273-7]
- 7 **Song H**, Ekheden IG, Zheng Z, Ericsson J, Nyrén O, Ye W. Incidence of gastric cancer among patients with gastric precancerous lesions: observational cohort study in a low risk Western population. *BMJ* 2015; **351**: h3867 [PMID: 26215280 DOI: 10.1136/bmj.h3867]
- 8 **Pimentel-Nunes P**, Libânio D, Marcos-Pinto R, Areia M, Leja M, Esposito G, Garrido M, Kikuste I, Megraud F, Matysiak-Budnik T, Annibale B, Dumonceau JM, Barros R, Fléjou JF, Carneiro F, van Hooft JE, Kuipers EJ, Dinis-Ribeiro M. Management of epithelial precancerous conditions and lesions in the stomach (MAPS II): European Society of Gastrointestinal Endoscopy (ESGE), European Helicobacter and Microbiota Study Group (EHMSG), European Society of Pathology (ESP), and Sociedade Portuguesa de Endoscopia Digestiva (SPED) guideline update 2019. *Endoscopy* 2019; **51**: 365-388 [PMID: 30841008 DOI: 10.1055/a-0859-1883]
- 9 **Take S**, Mizuno M, Ishiki K, Kusumoto C, Imada T, Hamada F, Yoshida T, Yokota K, Mitsuhashi T, Okada H. Risk of gastric cancer in the second decade of follow-up after Helicobacter pylori eradication. *J Gastroenterol* 2020; **55**: 281-288 [PMID: 31667586 DOI: 10.1007/s00535-019-01639-w]
- 10 **Hamashima C**, Shabana M, Okada K, Okamoto M, Osaki Y. Mortality reduction from gastric cancer by endoscopic and radiographic screening. *Cancer Sci* 2015; **106**: 1744-1749 [PMID: 26432528 DOI: 10.1111/cas.12829]
- 11 **Shah SC**, Piazuelo MB, Kuipers EJ, Li D. AGA Clinical Practice Update on the Diagnosis and Management of Atrophic Gastritis: Expert Review. *Gastroenterology* 2021; **161**: 1325-1332.e7 [PMID: 34454714 DOI: 10.1053/j.gastro.2021.06.078]
- 12 **Takeda T**, Asaoka D, Nojiri S, Nishiyama M, Ikeda A, Yatagai N, Ishizuka K, Hiromoto T, Okubo S, Suzuki M, Nakajima A, Nakatsu Y, Komori H, Akazawa Y, Nakagawa Y, Izumi K, Matsumoto K, Ueyama H, Sasaki H, Shimada Y, Osada T, Hojo M, Kato M, Nagahara A. Linked Color Imaging and the Kyoto Classification of Gastritis: Evaluation of Visibility and Inter-Rater Reliability. *Digestion* 2020; **101**: 598-607 [PMID: 31302654 DOI: 10.1159/000501534]
- 13 **Toyoshima O**, Nishizawa T, Yoshida S, Matsuno T, Odawara N, Toyoshima A, Sakitani K, Watanabe H, Fujishiro M, Suzuki H. Consistency between the endoscopic Kyoto classification and pathological updated Sydney system for gastritis: A cross-sectional study. *J Gastroenterol Hepatol* 2022; **37**: 291-300 [PMID: 34569096 DOI: 10.1111/jgh.15693]
- 14 **Toyoshima O**, Nishizawa T. Kyoto classification of gastritis: Advances and future perspectives in endoscopic diagnosis of gastritis. *World J Gastroenterol* 2022; **28**: 6078-6089 [PMID: 36483157 DOI: 10.3748/wjg.v28.i43.6078]
- 15 **Wang K**, Zhao J, Jin H, Meng L, Fan Y, Zhou Y, Ye C, Li M, Ma P, Zhu L, Ye Y, Lyu B. Establishment of a modified Kyoto classification scoring model and its significance in the diagnosis of Helicobacter pylori current infection. *Gastrointest Endosc* 2023; **97**: 684-693 [PMID: 36403805 DOI: 10.1016/j.gie.2022.11.008]
- 16 **Shichijo S**, Hirata Y, Niikura R, Hayakawa Y, Yamada A, Koike K. Association between gastric cancer and the Kyoto classification of gastritis. *J Gastroenterol Hepatol* 2017; **32**: 1581-1586 [PMID: 28217843 DOI: 10.1111/jgh.13764]
- 17 **Sugimoto M**, Ban H, Ichikawa H, Sahara S, Otsuka T, Inatomi O, Bamba S, Furuta T, Andoh A. Efficacy of the Kyoto Classification of Gastritis in Identifying Patients at High Risk for Gastric Cancer. *Intern Med* 2017; **56**: 579-586 [PMID: 28321054 DOI: 10.2169/internalmedicine.56.7775]
- 18 **Toyoshima O**, Nishizawa T, Yoshida S, Aoki T, Nagura F, Sakitani K, Tsuji Y, Nakagawa H, Suzuki H, Koike K. Comparison of endoscopic gastritis based on Kyoto classification between diffuse and intestinal gastric cancer. *World J Gastrointest Endosc* 2021; **13**: 125-136 [PMID: 34046150 DOI: 10.4253/wjge.v13.i5.125]
- 19 **Lin J**, Su H, Zhou Q, Pan J, Zhou L. Predictive value of nomogram based on Kyoto classification of gastritis to diagnosis of gastric cancer. *Scand J Gastroenterol* 2022; **57**: 574-580 [PMID: 34994675 DOI: 10.1080/00365521.2021.2023626]
- 20 **Kimura K**, Takemoto T. An endoscopic recognition of the atrophic border and its significance in chronic gastritis. *Endoscopy* 1969; **1**: 87-97 [DOI: 10.1055/S-0028-1098086]
- 21 **Haruma K**, Kato M, Inoue K, Murakami K, Kamada T. Kyoto Classification of Gastritis. 1st Edition. Tokyo Japan: Nihon Medical Center, 2017
- 22 **Japanese Gastric Cancer Association**. Japanese classification of gastric carcinoma: 3rd English edition. *Gastric Cancer* 2011; **14**: 101-112 [PMID: 21573743 DOI: 10.1007/s10120-011-0041-5]
- 23 **Lauren P**. The two histological main types of gastric carcinoma: Diffuse and so-called intestinal-type carcinoma. an attempt at a histo-clinical classification. *Acta Pathol Microbiol Scand* 1965; **64**: 31-49 [PMID: 14320675 DOI: 10.1111/apm.1965.64.1.31]
- 24 **Liu XM**, Ma XY, Liu F, Liu ZL, Tang XY, Ji MZ, Zheng JX. Gastric Cancer Screening Methods: A Comparative Study of the Chinese New Gastric Cancer Screening Score and Kyoto Classification of Gastritis. *Gastroenterol Res Pract* 2022; **2022**: 7639968 [PMID: 35309108 DOI: 10.1155/2022/7639968]
- 25 **Ohno A**, Miyoshi J, Kato A, Miyamoto N, Yatagai T, Hada Y, Kusuura M, Jimbo Y, Ida Y, Tokunaga K, Okamoto S, Hisamatsu T. Endoscopic severe mucosal atrophy indicates the presence of gastric cancer after Helicobacter pylori eradication -analysis based on the Kyoto classification. *BMC Gastroenterol* 2020; **20**: 232 [PMID: 32689949 DOI: 10.1186/s12876-020-01375-z]
- 26 **Sugimoto M**, Kawai Y, Morino Y, Hamada M, Iwata E, Niikura R, Nagata N, Koyama Y, Fukuzawa M, Itoi T, Kawai T. Efficacy of high-vision transnasal endoscopy using texture and colour enhancement imaging and narrow-band imaging to evaluate gastritis: a randomized

- controlled trial. *Ann Med* 2022; **54**: 1004-1013 [PMID: [35441573](#) DOI: [10.1080/07853890.2022.2063372](#)]
- 27 **Shichijo S**, Hirata Y, Niikura R, Hayakawa Y, Yamada A, Ushiku T, Fukayama M, Koike K. Histologic intestinal metaplasia and endoscopic atrophy are predictors of gastric cancer development after *Helicobacter pylori* eradication. *Gastrointest Endosc* 2016; **84**: 618-624 [PMID: [26995689](#) DOI: [10.1016/j.gie.2016.03.791](#)]
  - 28 **Kaji K**, Hashiba A, Uotani C, Yamaguchi Y, Ueno T, Ohno K, Takabatake I, Wakabayashi T, Doyama H, Ninomiya I, Kiriya M, Ohyama S, Yoneshima M, Koyama N, Takeda Y, Yasuda K. Grading of Atrophic Gastritis is Useful for Risk Stratification in Endoscopic Screening for Gastric Cancer. *Am J Gastroenterol* 2019; **114**: 71-79 [PMID: [30315306](#) DOI: [10.1038/s41395-018-0259-5](#)]
  - 29 **Sui Z**, Chen J, Li P, Shao L, Ye J, Lu X, Cai J. Risk for gastric cancer in patients with gastric atrophy: a systematic review and meta-analysis. *Transl Cancer Res* 2020; **9**: 1618-1624 [PMID: [35117509](#) DOI: [10.21037/tcr.2020.01.54](#)]
  - 30 **Xiao S**, Fan Y, Yin Z, Zhou L. Endoscopic grading of gastric atrophy on risk assessment of gastric neoplasia: A systematic review and meta-analysis. *J Gastroenterol Hepatol* 2021; **36**: 55-63 [PMID: [32656803](#) DOI: [10.1111/jgh.15177](#)]
  - 31 **Yue H**, Shan L, Bin L. The significance of OLGA and OLGIM staging systems in the risk assessment of gastric cancer: a systematic review and meta-analysis. *Gastric Cancer* 2018; **21**: 579-587 [PMID: [29460004](#) DOI: [10.1007/s10120-018-0812-3](#)]
  - 32 **Na YS**, Kim SG, Cho SJ. Risk assessment of metachronous gastric cancer development using OLGA and OLGIM systems after endoscopic submucosal dissection for early gastric cancer: a long-term follow-up study. *Gastric Cancer* 2023; **26**: 298-306 [PMID: [36609936](#) DOI: [10.1007/s10120-022-01361-2](#)]
  - 33 **Sakitani K**, Hirata Y, Watabe H, Yamada A, Sugimoto T, Yamaji Y, Yoshida H, Maeda S, Omata M, Koike K. Gastric cancer risk according to the distribution of intestinal metaplasia and neutrophil infiltration. *J Gastroenterol Hepatol* 2011; **26**: 1570-1575 [PMID: [21575058](#) DOI: [10.1111/j.1440-1746.2011.06767.x](#)]
  - 34 **Watanabe M**, Kato J, Inoue I, Yoshimura N, Yoshida T, Mukoubayashi C, Deguchi H, Enomoto S, Ueda K, Maekita T, Iguchi M, Tamai H, Utsunomiya H, Yamamichi N, Fujishiro M, Iwane M, Tekeshita T, Mohara O, Ushijima T, Ichinose M. Development of gastric cancer in nonatrophic stomach with highly active inflammation identified by serum levels of pepsinogen and *Helicobacter pylori* antibody together with endoscopic rugal hyperplastic gastritis. *Int J Cancer* 2012; **131**: 2632-2642 [PMID: [22383377](#) DOI: [10.1002/ijc.27514](#)]
  - 35 **Kamada T**, Tanaka A, Yamanaka Y, Manabe N, Kusunoki H, Miyamoto M, Tanaka S, Hata J, Chayama K, Haruma K. Nodular gastritis with *helicobacter pylori* infection is strongly associated with diffuse-type gastric cancer in young patients. *Dig Endosc* 2007; **19**: 180-184 [DOI: [10.1111/j.1443-1661.2007.00750.x](#)]
  - 36 **Nishikawa I**, Kato J, Terasoma S, Matsutani H, Tamaki H, Tamaki T, Kuwashima F, Nakata H, Tomeki T, Matsunaka H, Ibata Y, Yamashita Y, Maekita T, Higashi K, Ichinose M. Nodular gastritis in association with gastric cancer development before and after *Helicobacter pylori* eradication. *JGH Open* 2018; **2**: 80-86 [PMID: [30483568](#) DOI: [10.1002/jgh3.12049](#)]
  - 37 **Nishizawa T**, Sakitani K, Suzuki H, Yoshida S, Kataoka Y, Nakai Y, Ebinuma H, Kanai T, Toyoshima O, Koike K. Clinical features of cardiac nodularity-like appearance induced by *Helicobacter pylori* infection. *World J Gastroenterol* 2020; **26**: 5354-5361 [PMID: [32994693](#) DOI: [10.3748/wjg.v26.i35.5354](#)]
  - 38 **Yoshii S**, Mabe K, Watano K, Ohno M, Matsumoto M, Ono S, Kudo T, Nojima M, Kato M, Sakamoto N. Validity of endoscopic features for the diagnosis of *Helicobacter pylori* infection status based on the Kyoto classification of gastritis. *Dig Endosc* 2020; **32**: 74-83 [PMID: [31309632](#) DOI: [10.1111/den.13486](#)]
  - 39 **Zhao J**, Xu S, Gao Y, Lei Y, Zou B, Zhou M, Chang D, Dong L, Qin B. Accuracy of Endoscopic Diagnosis of *Helicobacter pylori* Based on the Kyoto Classification of Gastritis: A Multicenter Study. *Front Oncol* 2020; **10**: 599218 [PMID: [33344250](#) DOI: [10.3389/fonc.2020.599218](#)]
  - 40 **Fiuza F**, Maluf-Filho F, Ide E, Furuya CK Jr, Fylyk SN, Ruas JN, Stabach L, Araujo GA, Matuguma SE, Uemura RS, Sakai CM, Yamazaki K, Ueda SS, Sakai P, Martins BC. Association between mucosal surface pattern under near focus technology and *Helicobacter pylori* infection. *World J Gastrointest Endosc* 2021; **13**: 518-528 [PMID: [34733412](#) DOI: [10.4253/wjge.v13.i10.518](#)]
  - 41 **Kawamura M**, Uedo N, Koike T, Kanesaka T, Hatta W, Ogata Y, Oikawa T, Iwai W, Yokosawa S, Honda J, Asonuma S, Okata H, Ohyauchi M, Ito H, Abe Y, Ara N, Kayaba S, Shinkai H, Shimokawa T. Kyoto classification risk scoring system and endoscopic grading of gastric intestinal metaplasia for gastric cancer: Multicenter observation study in Japan. *Dig Endosc* 2022; **34**: 508-516 [PMID: [34415621](#) DOI: [10.1111/den.14114](#)]



Published by **Baishideng Publishing Group Inc**  
7041 Koll Center Parkway, Suite 160, Pleasanton, CA 94566, USA

**Telephone:** +1-925-3991568

**E-mail:** [bpgoffice@wjgnet.com](mailto:bpgoffice@wjgnet.com)

**Help Desk:** <https://www.f6publishing.com/helpdesk>

<https://www.wjgnet.com>

