

# World Journal of *Gastrointestinal Surgery*

*World J Gastrointest Surg* 2023 November 27; 15(11): 2382-2673



## Contents

Monthly Volume 15 Number 11 November 27, 2023

## REVIEW

- 2382 Recent advances in computerized imaging and its vital roles in liver disease diagnosis, preoperative planning, and interventional liver surgery: A review  
*Horkaew P, Chansangrat J, Keeratibharat N, Le DC*

## MINIREVIEWS

- 2398 Diagnosis and treatment of post-cholecystectomy diarrhoea  
*Huang RL, Huang WK, Xiao XY, Ma LF, Gu HZR, Yang GP*

## ORIGINAL ARTICLE

## Retrospective Cohort Study

- 2406 Trans-anal endoscopic microsurgery for non-adenomatous rectal lesions  
*Shilo Yaacobi D, Bekhor EY, Khalifa M, Sandler TE, Issa N*

## Retrospective Study

- 2413 Effects of cytoreductive surgery combined with hyperthermic perfusion chemotherapy on prognosis of patients with advanced gallbladder cancer  
*Wu JX, Hua R, Luo XJ, Xie F, Yao L*
- 2423 Effect of laparoscopic sleeve gastrectomy on related variables of obesity complicated with polycystic ovary syndrome  
*Wang XT, Hou YS, Zhao HL, Wang J, Guo CH, Guan J, Lv ZG, Ma P, Han JL*
- 2430 Advantage of log odds of positive lymph nodes in prognostic evaluation of patients with early-onset colon cancer  
*Xia HB, Chen C, Jia ZX, Li L, Xu AM*
- 2445 Correlation between preoperative systemic immune inflammation index, nutritional risk index, and prognosis of radical resection of liver cancer  
*Li J, Shi HY, Zhou M*
- 2456 Correlation between pre-treatment serum total blood bilirubin and unconjugated bilirubin and prognosis in patients with colorectal cancer  
*Tong H, Xing P, Ji ZN*
- 2463 Correlation between the expressions of metastasis-associated factor-1 in colon cancer and vacuolar ATP synthase  
*He M, Cao ZF, Huang L, Zhong WJ, Xu XM, Zeng XL, Wang J*
- 2470 Risk factors for anastomotic fistula development after radical colon cancer surgery and their impact on prognosis  
*Wang J, Li MH*

- 2482** Effects and mechanisms of nutritional interventions on extradigestive complications in obese patients  
*Jiang L, Xu LL, Lu Y, Gu KF, Qian SY, Wang XP, Xu X*
- 2490** Hepatic venous pressure gradient: Inaccurately estimates portal venous pressure gradient in alcoholic cirrhosis and portal hypertension  
*Zhang D, Wang T, Yue ZD, Wang L, Fan ZH, Wu YF, Liu FQ*
- 2500** Nomogram for predicting early complications after distal gastrectomy  
*Zhang B, Zhu Q, Ji ZP*
- 2513** Application of CD34 expression combined with three-phase dynamic contrast-enhanced computed tomography scanning in preoperative staging of gastric cancer  
*Liu H, Zhao KY*
- Observational Study**
- 2525** Predictive value of frailty assessment tools in patients undergoing surgery for gastrointestinal cancer: An observational cohort study  
*Zhang HP, Zhang HL, Zhou XM, Chen GJ, Zhou QF, Tang J, Zhu ZY, Wang W*
- 2537** Multi-national observational study to assess quality of life and treatment preferences in patients with Crohn's perianal fistulas  
*Karki C, Athavale A, Abilash V, Hantsbarger G, Geransar P, Lee K, Milicevic S, Perovic M, Raven L, Sajak-Szczerba M, Silber A, Yoon A, Tozer P*
- 2553** Does gastric stump cancer really differ from primary proximal gastric cancer? A multicentre, propensity score matching-used, retrospective cohort study  
*Wang SH, Zhang JC, Zhu L, Li H, Hu KW*

**SYSTEMATIC REVIEWS**

- 2564** Global, regional, and national burden of gallbladder and biliary diseases from 1990 to 2019  
*Li ZZ, Guan LJ, Ouyang R, Chen ZX, Ouyang GQ, Jiang HX*
- 2579** Risk and management of post-operative infectious complications in inflammatory bowel disease: A systematic review  
*Mowlah RK, Soldera J*
- 2596** Effect of perioperative branched chain amino acids supplementation in liver cancer patients undergoing surgical intervention: A systematic review  
*Yap KY, Chi H, Ng S, Ng DH, Shelat VG*

**CASE REPORT**

- 2619** Organ sparing to cure stage IV rectal cancer: A case report and review of literature  
*Meillat H, Garnier J, Palen A, Ewald J, de Chaisemartin C, Tyran M, Mitry E, Lelong B*
- 2627** Metachronous primary esophageal squamous cell carcinoma and duodenal adenocarcinoma: A case report and review of literature  
*Huang CC, Ying LQ, Chen YP, Ji M, Zhang L, Liu L*

- 2639** Isolated traumatic gallbladder injury: A case report  
*Liu DL, Pan JY, Huang TC, Li CZ, Feng WD, Wang GX*
- 2646** Comprehensive treatment and a rare presentation of Cronkhite–Canada syndrome: Two case reports and review of literature  
*Ly YQ, Wang ML, Tang TY, Li YQ*
- 2657** Gastric inflammatory myofibroblastic tumor, a rare mesenchymal neoplasm: A case report  
*Fernandez Rodriguez M, Artuñedo Pe PJ, Callejas Diaz A, Silvestre Egea G, Grillo Marín C, Iglesias Garcia E, Lucena de La Poza JL*
- 2663** Systematic sequential therapy for *ex vivo* liver resection and autotransplantation: A case report and review of literature  
*Hu CL, Han X, Gao ZZ, Zhou B, Tang JL, Pei XR, Lu JN, Xu Q, Shen XP, Yan S, Ding Y*

**ABOUT COVER**

Editorial Board Member of *World Journal of Gastrointestinal Surgery*, Osman Nuri Dilek, FACS, Professor, Department of Surgery, Division of Hepatopancreatobiliary Surgery, Izmir Katip Çelebi University School of Medicine, İzmir 35150, Turkey. osmannuridilek@gmail.com

**AIMS AND SCOPE**

The primary aim of *World Journal of Gastrointestinal Surgery* (WJGS, *World J Gastrointest Surg*) is to provide scholars and readers from various fields of gastrointestinal surgery with a platform to publish high-quality basic and clinical research articles and communicate their research findings online.

WJGS mainly publishes articles reporting research results and findings obtained in the field of gastrointestinal surgery and covering a wide range of topics including biliary tract surgical procedures, biliopancreatic diversion, colectomy, esophagectomy, esophagostomy, pancreas transplantation, and pancreatectomy, etc.

**INDEXING/ABSTRACTING**

The WJGS is now abstracted and indexed in Science Citation Index Expanded (SCIE, also known as SciSearch®), Current Contents/Clinical Medicine, Journal Citation Reports/Science Edition, PubMed, PubMed Central, Reference Citation Analysis, China Science and Technology Journal Database, and Superstar Journals Database. The 2023 Edition of Journal Citation Reports® cites the 2022 impact factor (IF) for WJGS as 2.0; IF without journal self cites: 1.9; 5-year IF: 2.2; Journal Citation Indicator: 0.52; Ranking: 113 among 212 journals in surgery; Quartile category: Q3; Ranking: 81 among 93 journals in gastroenterology and hepatology; and Quartile category: Q4.

**RESPONSIBLE EDITORS FOR THIS ISSUE**

Production Editor: Rui-Rui Wu, Production Department Director: Xiang Li, Editorial Office Director: Jia-Ru Fan.

**NAME OF JOURNAL**

*World Journal of Gastrointestinal Surgery*

**ISSN**

ISSN 1948-9366 (online)

**LAUNCH DATE**

November 30, 2009

**FREQUENCY**

Monthly

**EDITORS-IN-CHIEF**

Peter Schemmer

**EDITORIAL BOARD MEMBERS**

<https://www.wjgnet.com/1948-9366/editorialboard.htm>

**PUBLICATION DATE**

November 27, 2023

**COPYRIGHT**

© 2023 Baishideng Publishing Group Inc

**INSTRUCTIONS TO AUTHORS**

<https://www.wjgnet.com/bpg/gerinfo/204>

**GUIDELINES FOR ETHICS DOCUMENTS**

<https://www.wjgnet.com/bpg/GerInfo/287>

**GUIDELINES FOR NON-NATIVE SPEAKERS OF ENGLISH**

<https://www.wjgnet.com/bpg/gerinfo/240>

**PUBLICATION ETHICS**

<https://www.wjgnet.com/bpg/GerInfo/288>

**PUBLICATION MISCONDUCT**

<https://www.wjgnet.com/bpg/gerinfo/208>

**ARTICLE PROCESSING CHARGE**

<https://www.wjgnet.com/bpg/gerinfo/242>

**STEPS FOR SUBMITTING MANUSCRIPTS**

<https://www.wjgnet.com/bpg/GerInfo/239>

**ONLINE SUBMISSION**

<https://www.f6publishing.com>





## Metachronous primary esophageal squamous cell carcinoma and duodenal adenocarcinoma: A case report and review of literature

Chun-Chun Huang, Le-Qian Ying, Yan-Ping Chen, Min Ji, Lu Zhang, Lin Liu

**Specialty type:** Gastroenterology and hepatology

**Provenance and peer review:**

Unsolicited article; Externally peer reviewed.

**Peer-review model:** Single blind

**Peer-review report's scientific quality classification**

Grade A (Excellent): A  
Grade B (Very good): B, B  
Grade C (Good): C, C  
Grade D (Fair): D, D  
Grade E (Poor): 0

**P-Reviewer:** Caboclo JLF, Brazil;  
Corvino A, Italy; Losurdo G, Italy;  
Gupta V, India; Dilek ON, Turkey;  
Kalayarsan R, India

**Received:** July 10, 2023

**Peer-review started:** July 10, 2023

**First decision:** September 6, 2023

**Revised:** September 23, 2023

**Accepted:** October 26, 2023

**Article in press:** October 26, 2023

**Published online:** November 27, 2023



**Chun-Chun Huang, Le-Qian Ying, Yan-Ping Chen, Min Ji, Lu Zhang, Lin Liu,** Department of Oncology, Zhongda Hospital, Medical School of Southeast University, Nanjing, Jiangsu Province, 210009, China

**Corresponding author:** Lin Liu, MD, Chief Physician, Department of Oncology, Zhongda Hospital, Medical School of Southeast University, Nanjing, Jiangsu Province, 210009, China  
[101012478@seu.edu.cn](mailto:101012478@seu.edu.cn)

### Abstract

#### BACKGROUND

The prevalence of multiple primary malignant neoplasms (MPMNs) is increasing in parallel with the incidence of malignancies, the continual improvement of diagnostic models, and the extended life of patients with tumors, especially those of the digestive system. However, the co-existence of MPMNs and duodenal adenocarcinoma (DA) is rarely reported. In addition, there is a lack of comprehensive analysis of MPMNs regarding multi-omics and the tumor microenvironment (TME).

#### CASE SUMMARY

In this article, we report the case of a 56-year-old man who presented with a complaint of chest discomfort and abdominal distension. The patient was diagnosed with metachronous esophageal squamous cell carcinoma and DA in the Department of Oncology. He underwent radical resection and chemotherapy for the esophageal tumor, as well as chemotherapy combined with a programmed death-1 inhibitor for the duodenal tumor. The overall survival was 16.6 mo. Extensive evaluation of the multi-omics and microenvironment features of primary and metastatic tumors was conducted to: (1) Identify the reasons responsible for the poor prognosis and treatment resistance in this case; and (2) Offer novel diagnostic and therapeutic approaches for MPMNs. This case demonstrated that the development of a second malignancy may be independent of the location of the first tumor. Thus, tumor recurrence (including metastases) should be distinguished from the second primary for an accurate diagnosis of MPMNs.

#### CONCLUSION

Multi-omics characteristics and the TME may facilitate treatment selection, improve efficacy, and assist in the prediction of prognosis.

**Key Words:** Multiple primary malignancies; Esophageal tumor; Duodenal adenocarcinoma; Multi-omics; Tumor microenvironment; Case report

©The Author(s) 2023. Published by Baishideng Publishing Group Inc. All rights reserved.

**Core Tip:** Multiple primary malignant neoplasms (MPMNs) are increasingly prevalent in clinical practice, most frequently in the digestive system. We report a rare case of MPMN with a combination of esophageal squamous cell carcinoma and duodenal adenocarcinoma. According to PubMed-indexed literature, there are no standard guidelines or expert consensus on the etiology and comprehensive treatment. We also conducted a detailed study of the features of primary and metastatic tumors. The aim of this report was to identify the reasons responsible for the poor prognosis and treatment resistance in this case through histological data and provide new diagnostic and treatment directions for MPMNs.

**Citation:** Huang CC, Ying LQ, Chen YP, Ji M, Zhang L, Liu L. Metachronous primary esophageal squamous cell carcinoma and duodenal adenocarcinoma: A case report and review of literature. *World J Gastrointest Surg* 2023; 15(11): 2627-2638

**URL:** <https://www.wjgnet.com/1948-9366/full/v15/i11/2627.htm>

**DOI:** <https://dx.doi.org/10.4240/wjgs.v15.i11.2627>

## INTRODUCTION

Multiple primary malignant neoplasms (MPMNs), also termed multiple primary cancers, refer to two or more primary tumors that occur simultaneously or sequentially in a single or multiple organs[1]. According to the time interval from the diagnosis of the first tumor, MPMNs are divided into synchronous cancer (SC) (< 6 mo) and metachronous cancer (MC) (≥ 6 mo)[2]. The detection rate of the second or multiple primary tumors is also on the rise due to newer diagnostic methods and treatments, as well as the longer survival times of patients with cancer. MPMNs are most commonly reported in the digestive system; however, their occurrence in combination with duodenal adenocarcinoma (DA) is extremely rare. In this article, we describe the case of a patient who had metachronous esophageal squamous cell carcinoma (ESCC) and DA with multiple metastases. In this analysis, we thoroughly examined the multi-omics features and tumor-related immune microenvironment.

## CASE PRESENTATION

### Chief complaints

A 56-year-old Chinese man presented to a local hospital with a complaint of chest discomfort and abdominal distension.

### History of present illness

The symptoms developed 2 mo before presentation to hospital.

### History of past illness

Endoscopic examination, performed on February 1, 2021, revealed the presence of ulcerative lesions in the left wall of the esophagus. These lesions were brittle and prone to bleeding when touched. Frosty ulcers were also detected in the duodenal bulb. Histopathological analysis of the esophagus indicated moderately differentiated squamous cell carcinoma. The patient visited the Thoracic Surgery Department of the General Hospital for further treatment. The preoperative levels of alpha-fetoprotein were 16.6 ng/mL (0-7 ng/mL), whereas those of other gastrointestinal tumor indicators were within the normal range. The upper gastrointestinal tract barium meal revealed a localization in the lower and middle esophagus (Figure 1A). Further evaluation through enhanced computed tomography (CT) of the chest and upper abdomen showed thickening and enhancement of the lower esophagus wall (Figure 1B). A thoracoscopic laparoscopy combined with radical resection of esophageal tumors was carried out on February 24, 2021. Postoperative pathological analysis revealed that the tumor was completely located in the esophagus and did not involve the gastroesophageal junction; the tumor dimensions were 3 cm × 2 cm × 1 cm. The examination confirmed the presence of a highly differentiated squamous cell carcinoma (Figure 1C), staged according to pTNM, American Joint Committee on Cancer 8<sup>th</sup> Edition: Phase IIIA (T2N1M0). As shown in Table 1, a pathological investigation demonstrated nerve invasion, while immunohistochemistry indicated proficient mismatch repair (pMMR). Subsequently, an adjuvant DP chemotherapy regimen (cisplatin 20 mg through intravenous infusion on days 1-5 combined with doxorubicin 60 mg on days 1 and 8) was initiated (one cycle per 3 wk) from postoperative day 37 to July 29, 2021. The administration of treatment was delayed due to the development of anemia. Consequently, a total of three cycles were carried out during this period. According to the RECIST 1.1 guideline, the condition was evaluated as a stable disease.

**Table 1 Genetic testing and immunohistochemical data**

Gene	Mutant/variation	Plasma	Esophagus	Duodenum	Liver
CDKN2A	c.322G>T (p.D108Y)	-	22.0%	-	-
NF1	c.6173 7127-1115del	9.1%	-	3.2%	0.9%
TP53	c.560-2A>T	0.1%	15.4%	-	-
TP53	c.557 558delinsG	-	13.1%	-	-
APC	Deletion mutation	7.8%	-	8.2%	1.5%
CCND1	Amplification	-	CN:5.1	-	-
FGF19	Amplification	-	CN:4.4	-	-
MDM2	Amplification	-	-	CN:4.4	-
SMAD4	c.456 478dup	23.4%	-	17.1%	5.9%
SMARCA4	c.2506G>T (p.G836*)	-	-	6.9%	-
CREBBP	c.6666 6677del	0.1%	-	-	3.4%
EP300	c.4751 4752delinsAT	-	12.2%	-	-
GATA3	c.527 528delinsAG	-	-	2.1%	-
RPTOR	c.2000T>C (p.L667P)	-	2.3%	-	-
TMBs		5.1/Mb (50.4%)	8.2/Mb (29%)	4.1/Mb (59.3%)	3.1/Mb (68.9%)
Microsatellite analysis		MSS/MSI-L	MSS/MSI-L	MSS/MSI-L	MSS/MSI-L
MMR-related mutations		None	None	None	None
<b>Immunohistochemistry</b>					
CR			-		
D2-40			-		
Ki67			About 67%+		About 70%+
P40			+	-	-
S-100			+		
SMA			+		
CAM5.2				+	
CD56				-	
CgA				-	
P63				-	
Syn				-	
CDH17				-	
CDX2					Weak +
CK19					+
CK20					-
CK7					+
SATB2					-
TTF					-
Villin					+
Her2			+	+	
MLH1			Complete expression	Complete expression	
MSH2			Complete expression	Complete expression	
MSH6			Complete expression	Complete expression	



MSH6	Complete expression	Complete expression	
PD-L1	< 1%+	CPS < 1	
EBER	-	-	
EGFR	3+	2+	
VEGF	-	-	
CD15	Part+	-	Part-
CD163	+	+	+
CD4	About 5%+	About 8%+	About 10%+
CD68	+	+	+
CD8	About 10%+	About 5%+	About 15%+

CDKN2A: Cyclin-dependent kinase inhibitor 2A; NF1: Neurofibromin 1; TP53: Tumor protein p53; APC: Adenomatosis polyposis coli; CCND1: Cyclin D1; FGF19: Fibroblast growth factor 19; MDM2: Mouse double minute 2; SMAD4: SMAD family member 4; SMARCA4: SWI/SNF-related, matrix-associated, actin-dependent regulator of chromatin, subfamily A, member 4; CREBBP: Recombinant CREB binding protein; EP300: E1A binding protein p300; GATA3: Recombinant GATA binding protein 3; RPTOR: Regulatory-associated protein of mTOR; TMBs: Tumor mutational burdens; MSS: Microsatellite stability; MSI-L: Microsatellite instability-low; MMR: Mismatch repair; CR: Calretinin; P40: Protein 40; SMA: Smooth muscle actin; CAM5.2: Cell adhesion molecule 5.2; CD56: Cluster of differentiation 56; CgA: Chromogranin A; CDH17: Cadherin 17; CDX2: Caudal type homeobox 2; CK7: Cytokeratin 7; SATB2: Special AT-rich sequence-binding protein 2; TTF: Thyroid transcription factor; MLH1: MutL homolog 1; MSH2: MutS homolog 2; MSH6: Muts homolog 6; PD-L1: Programmed death-ligand 1; EBER: Epstein barr encoded RNA; EGFR: Epidermal growth factor receptor; VEGF: Vascular endothelial growth factor.

Personal and family history

The patient had a history of hypertension and syphilis with symptomatic treatment, and a 30-year history of smoking. However, he denied alcohol consumption, and did not report any family history of malignant tumors.

Physical examination

On physical examination, the vital signs were as follows: Body temperature, 36.5 °C; blood pressure, 137/88 mmHg; heart rate, 83 beats per min; respiratory rate, 18 breaths per min. Furthermore, the patient exhibited an anemic appearance without iris and skin jaundice. There was no abdominal pressure or percussion pain.

Laboratory examinations

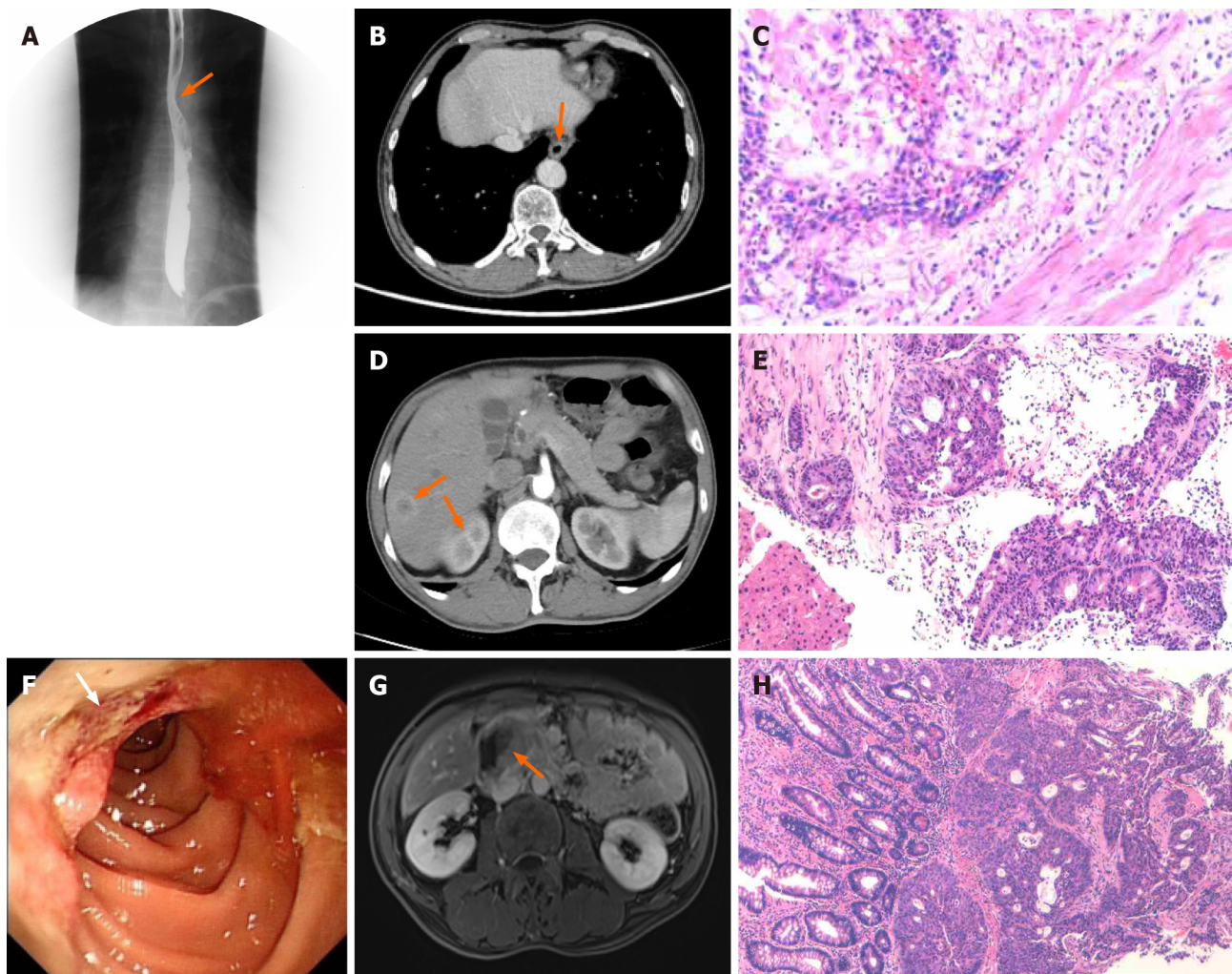
The levels of serum tumor markers were mostly normal (carcinoembryonic antigen, 2.79 ng/mL; carbohydrate antigen 19-9, < 2 U/mL), except for alpha-fetoprotein (17.2 ng/mL; normal range: 0-7 ng/mL) without clinical significance. The concentration of hemoglobin in blood was 68 g/L. There were no abnormalities found in other routine blood, urine, and fecal analyses.

Imaging examinations

During the postoperative checkup, CT enhancement of the upper abdomen (September 28, 2021) revealed multiple liver metastases (diameter of the largest lesion: 1.5 cm) (Figure 1D). After consultation, the patient was referred to the Department of Oncology for treatment. On October 19, 2021, a needle biopsy of liver mass was performed under ultrasound guidance. The postoperative pathological findings suggested that the liver lesion was compatible with invasive intermediate differentiated adenocarcinoma (Figure 1E). According to the immunohistochemistry findings, the biliopancreatic duct, gastric, and small intestinal sources were considered, as detailed in Table 1. Before the biopsy, a gastroscopy and magnetic resonance enhancement of the abdomen were performed additionally. The former revealed the presence of an ulcerative neoplasm in the descending portion of the duodenum (Figure 1F). The latter indicated multiple metastases in the liver, occupancy of segments 2-3 of the duodenum, and the need for the identification of spinal metastases (Figure 1G). Consequently, a further bone scan was carried out, which detected an abnormal radio concentration lesion in the right iliac bone. Ultimately, pathological examination of the biopsied specimen confirmed a moderately to poorly differentiated DA (Figure 1H), with immunohistochemistry indicating a combined positive score < 1 and pMMR (Table 1). Additionally, the esophagus, duodenum, hepatic lesions, and peripheral blood of the patient were analyzed for 473 genetic loci (Table 1).

FINAL DIAGNOSIS

Based on the examination results and medical history, the patient was eventually diagnosed with esophageal squamous carcinoma postoperative stage IIIA (pT2N1M0) and DA stage IV (cTxNxM1) (liver metastasis, bone metastasis) after multi-disciplinary evaluation.

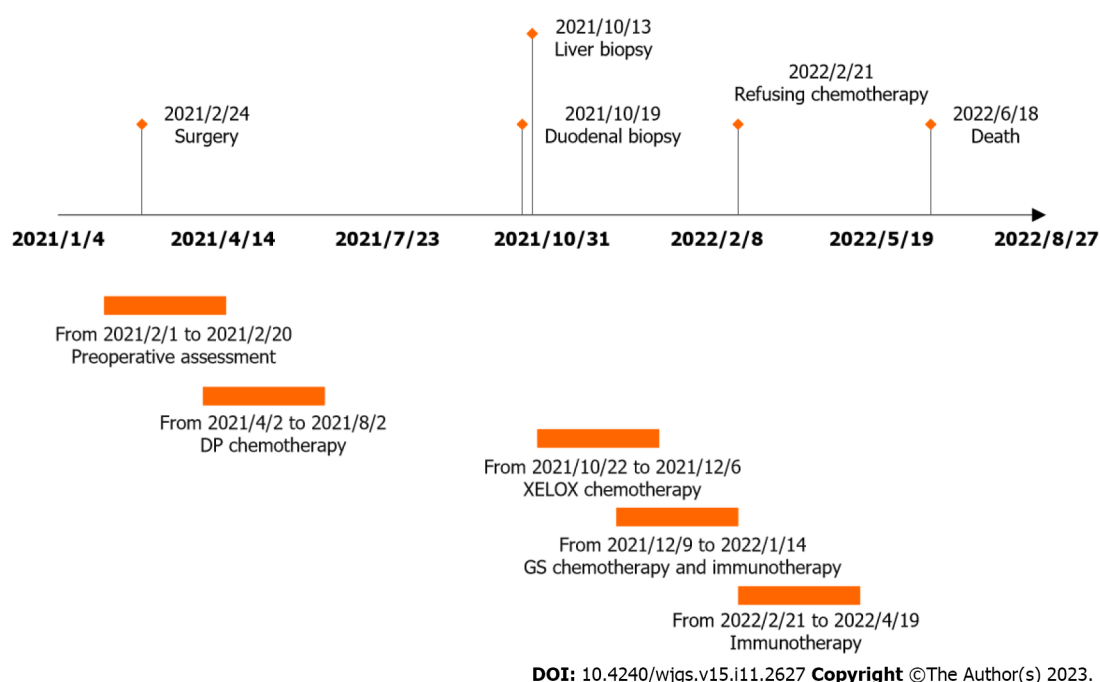


DOI: 10.4240/wjgs.v15.i11.2627 Copyright ©The Author(s) 2023.

**Figure 1** Diagnostic information of primary carcinomas and metastases. A: The upper gastrointestinal tract barium meal revealed a localization in the lower-middle esophagus on February 20, 2021; B: The enhanced computed tomography (CT) scan of the chest and upper abdomen showed thickness and enhancement of the lower esophagus wall on February 19, 2021; C: Postoperative pathology revealed that the tumor was completely located in the esophagus on February 24, 2021. It was a highly differentiated squamous cell carcinoma (original magnification  $\times 200$ ); D: Abdominal CT enhancement showed multiple metastatic nodules in the liver on September 18, 2021; E: "A needle biopsy of liver mass" was done under ultrasound guidance, and the pathology suggested that the liver lesion was compatible with invasive intermediate differentiated adenocarcinoma on October 19, 2021 (original magnification  $\times 200$ ); F: The gastroscopy revealed an ulcerated neoplasm in the descending portion of the duodenum on October 13, 2021; G: Abdominal magnetic resonance imaging showed an occupancy in the descending and horizontal parts of the duodenum on October 10, 2021; H: Pathology of needle biopsy revealed a medium-low differentiated adenocarcinoma (original magnification  $\times 100$ ).

## TREATMENT

The patient received two cycles of XELOX (oxaliplatin 160 mg through intravenous infusion on day 1, combined with capecitabine 1.5 g orally twice daily on days 1-14 every 21 d). This was followed by CT enhancement performed on October 22, 2021, to evaluate progressive disease (PD). Therefore, from December 9, 2021, the treatment plan was changed to GS (gemcitabine 1.2 g through intravenous infusion on days 1 and 8, combined with tegafur 40 mg orally twice daily on days 1-14 every 21 d) along with a programmed death-1 (PD-1) inhibitor (sintilimab 200 mg through intravenous infusion on day 1). However, despite the two cycles of chemotherapy, the condition continued to be rated as PD (January 28, 2022) by CT. Due to the high cost of sintilimab, the regimen was changed to one cycle of monotherapy with irinotecan (200 mg through intravenous infusion on day 1) on January 29, 2022. The patient later declined to continue a second cycle of irinotecan chemotherapy due to a low nutritional state and prolonged grade IV myelosuppression. The tumor continued to grow rapidly after two cycles of immunotherapy with sintilimab again, and all anti-cancer therapy was discontinued.



**Figure 2** Time points correspond to the diagnostic and therapeutic process. DP: Doxorubicin and platinum; GS: Gemcitabine and s-1.

## OUTCOME AND FOLLOW-UP

The patient was eventually followed up until clinical death on June 18, 2022 (Figure 2), with an overall survival (OS) of 16.6 mo.

## DISCUSSION

The prevalence of MPMNs is increasing in parallel with the incidence of malignancies, the continual improvement of diagnostic models, and the extended life of patients with tumors. MPMNs represent 0.7%-11.7% of all cancer cases worldwide[3]. In China, this rate is only 0.99%[4]. A multicenter investigation demonstrated that MPMNs are more commonly detected in individuals aged > 65 years. Men are associated with a higher incidence rate than women, and MC is significantly more common than SC[5]. MPMNs are prevalent in the digestive system[6]. The morbidity rate of MPMNs linked to esophageal cancer ranges from 9.5% to 21.9%[7], with gastric (4.7%), head and neck (2.7%), colorectal (1.2%), and lung (0.7%) cancer being the most common types of combined malignancies. It has also been discovered that approximately one in five patients with ESCC who survive > 6 mo in Western societies develop a second primary cancer within 15 years[8]. Notably, due to the rarity of small bowel tumors and their nonspecific symptoms[9], primary DA and associated MPMNs are rarely reported. Even fewer studies that examine the genomics and immunomics of MPMNs in depth have been published. In this article, we provide a thorough assessment based on the current diagnostic and therapeutic options for MPMNs, taking into account the case of MC. We also conducted an extensive evaluation of the immune microenvironment features of primary and metastatic tumors. Through the analysis of histology data, we sought to: (1) Identify the reasons responsible for the poor prognosis and treatment resistance observed in this case; and (2) Offer novel diagnostic and therapeutic approaches for MPMNs.

The etiology of MPMNs has not been identified; potential causes include abnormal activation of oncogenes, silencing of oncogenes, epigenetic alterations, chromosomal instability, immunodeficiency, environmental exposure, and unhealthy lifestyle habits[10]. The patient in this case had a long history of smoking, which is a risk factor for MPMNs. Of note, the esophagus and duodenum originate in the foregut, and mutation of the lining cells during intrauterine life cannot be excluded in this case.

Tumor recurrence (including metastases) should be distinguished from the second primary for an accurate diagnosis of MPMNs. Firstly, the initial gastroscopic examination at another regional center hospital without pathological biopsies revealed the presence of ulcerative lesions in the duodenal bulb. This finding emphasized the need for a comprehensive assessment at the time of diagnosis of the first tumor. Moreover, a thorough histological analysis of each abnormal lesion is crucial. Secondly, rather than automatically assuming that newly discovered lesions are tumor metastases, clinicians ought to be alert to any new lesions that arise while a patient is receiving therapy. There is a rare possibility of primary or metastatic lesion involvement in the duodenum. Of note, lung cancer, renal cell carcinoma, breast cancer, and malignant melanoma are the most common types of primary tumors that metastasize to the pancreaticoduodenal region[11]. Thirdly, though rare, the incidental detection of one or more additional primary tumors during CT staging of a patient with a known malignancy is possible. Following the detection of masses in the liver by radiologists, an intensive search



and identification of the primary site should be performed. The selection between CT, magnetic resonance imaging, positron emission tomography, and ultrasound depends on the tumor type or body region[12]. However, CT (especially contrast-enhanced CT) remains the preferred modality for the staging of tumors and evaluation of treatment efficacy in patients diagnosed with cancer[13]. In addition, the appearance and progression of liver metastases on CT were accompanied by an increase in the levels of carbohydrate antigen 72-4 and carcinoembryonic antigen (Table 2). A dramatic increase in the levels of carcinoembryonic antigen when liver metastases continue to spread and the burden of systemic tumors continues to rise, which may indicate rapid progression of disease.

Factors that affect the prognosis of patients with MPMNs include age at initial cancer diagnosis ( $\geq 60$  years) and tumor stage[14]. The 2- and 5-year survival rates of patients with MPMNs are 40.8% and 4.6%, respectively[4]. The median OS for patients with MC-MPMNs and SC-MPMNs is 91 mo and 30 mo, respectively[15]. The presence of MC-MPMNs and patient age  $< 60$  years at the time of initial diagnosis of the primary tumor indicate a good prognosis. Nevertheless, the OS of the present patient was only 16.6 mo. Therefore, it is necessary to further analyze the reasons responsible for the poor prognosis. Although studies on the tumor microenvironment (TME) have yielded some promising results, there is a lack of investigations focusing on MPMNs. In this case, we examined several areas (*i.e.*, genomics, immunomics, inflammatory markers, and lipid metabolism) to accurately explain the histological features of the three malignancies identified in this patient.

Firstly, the development of second malignancies is largely caused by genetic susceptibility, with approximately 100 mutated genes causing one or more cancers[16]. The “multicentric origin” theory[17,18] suggests that different primary cancers in the same patient may have different mutation profiles and be driven by different genes. Patients with two or more characteristic cancers (synchronous or asynchronous) should undergo genetic testing. Therefore, in this case, the patient underwent prompt genetic testing after the discovery of DA. Table 1 demonstrates the results of gene high-throughput sequencing. Interestingly, cyclin-dependent kinase inhibitor 2A (*CDKN2A*), tumor protein p53 (*TP53*), cyclin D1 (*CCND1*), and E1A binding protein p300 (*EP300*) showed mutations only in ESCC tissue, while neurofibromin 1, adenomatous polyposis coli (*APC*), and SMAD family member 4 (*SMAD4*) showed mutations in peripheral blood, the duodenal tumor, and liver metastatic carcinoma. Similarly, genes involved in the cell cycle and apoptosis regulation (*e.g.*, *CDKN2A*, *TP53*, and *CCND1*) are mutated in 99% of ESCC cases[19]. In particular, increased *CDKN2A* gene deletion in somatic cells, which is mainly reported in lung and upper gastrointestinal tumors, may provide an early warning sign of esophageal cancer. In this case, the rate of *CDKN2A* gene mutation in the esophageal tumor tissue was 22%, suggesting a poor prognosis. In addition, the *EP300* gene is involved in the epigenetic process of histone modification in ESCC, and is associated with poor prognosis[20,21]. We found few genetic studies on primary duodenal cancer. The detection of duodenal lesions revealed in this case was based on the findings of Schrock *et al*[22] in genomic studies of small bowel cancer. The investigators of that study concluded that *APC* and *SMAD4* are commonly altered genes, and the rate of *APC* mutations is relatively low.

Secondly, some immunohistological features have been identified as susceptibility factors for second primary carcinogenesis. It has been suggested that microsatellite instability (MSI) and defective DNA damage repair are associated with the occurrence of MPMNs[23]. The probable mechanism underlying this relationship is the existence of Lynch syndrome, a genetic disorder caused by mutations in mismatch repair genes. MSI appears to be more prevalent in MPMNs than sporadic cancers. Cancer of the small intestine belongs to the Lynch syndrome spectrum of tumors. The lifetime risk in carriers is 4%, independent of the development of colon cancer[24]. Immunohistochemical typing of both primary tumor tissues in this case revealed pMMR. In addition, gene sequencing suggested that the MSI status was microsatellite stability, indicating that this patient was less likely to have Lynch syndrome and suggesting possible low responsiveness to immunotherapy.

Thirdly, the TME is a complex system consisting of multiple cell types. Previous studies showed that CD68 and CD163 are phenotypic markers of M1- and M2-type tumor-associated macrophages (TAMs), respectively[25]. It has been shown that increased numbers of CD163 + M2 macrophages contribute to angiogenesis, tumor aggressiveness, and ESCC progression[26]. These processes can deplete CD8+ T cells that exert specific anti-tumor effects *via* the PD-1/programmed death-ligand 1 (PD-1/PD-L1) pathway, thereby increasing the risk of immune escape of tumor cells[27]. However, there is controversy regarding the relationship between CD68 + M1 macrophages and the prognosis of gastrointestinal malignancies. Wang *et al*[28] concluded that the extent of CD68+ macrophage infiltration was negatively associated with survival time and prognosis. In contrast, Tang *et al*[29] argued that the abundance of CD68+ TAMs is not associated with ESCC progression, while that of CD163+ M2 TAMs is a potential risk factor. Based on data reported by previous studies and the validation of the clinical prognosis prediction of this patient, we performed immunohistochemical staining for CD68 and CD163 molecules in three cancerous tissues. The results showed consistently positive expression; high expression of CD68 and CD163 was associated with a poorer prognosis in this patient[30]. In addition to TAMs, tumor-associated neutrophils may promote T cell-mediated immunity through costimulatory molecules that enhance the proliferation of CD4+ and CD8+ T cells and increase the anti-tumor activity in early-stage disease[31]. As a cell surface glycoprotein regulated by neutrophil function, CD15 is thought to be associated with adverse OS[32]. In this case, the esophageal cancer tissue exhibited positivity for CD15, and the patient had a poor prognosis. These findings are consistent with those of previous studies. Therefore, genomics and immunomics play an important role in determining the degree of tumor malignancy, and can further guide the assessment of the prognosis of MPMNs.

Fourthly, immune-inflammatory cells in peripheral blood play an important role in tumors and can be used to predict prognosis and assess outcomes. It has been reported that the neutrophil-lymphocyte ratio (NLR), lymphocyte-monocyte ratio (LMR), and platelet-lymphocyte ratio (PLR) are useful in predicting the prognosis of ESCC. For instance, preoperative high NLR ( $> 3.29$ ) and low LMR ( $< 2.95$ ) in patients with ESCC are associated with worse OS[33,34]. Such evidence reflects an imbalance between the pro-cancer inflammatory response and the anti-cancer immune response. Moreover, LMR has been previously proposed as a poor prognostic factor for DA[35]. Furthermore, high PLR is

Table 2 Laboratory date

Date	Reference range	February 19, 2021 <sup>1</sup>	March 31, 2021 <sup>2</sup>	October 8, 2021 <sup>3</sup>	December 7, 2021 <sup>4</sup>	January 28, 2022 <sup>5</sup>	May 14, 2022 <sup>6</sup>
CA72-4 (u/mL)	0-6.9	1.64	19.1	6.48	8.61	74.6	227
CEA (ng/mL)	0-5	2.54	2.29	2.79	14.6	47.1	742
AFP (ng/mL)	0-5	16.6	18.8	17.2	18.3	16.2	10.8
NLR	-	7.25	1.47	1.76	2.21	2.21	15.89
LMR	-	1.29	4.07	3.34	2.37	2.37	1.3
PLR	-	376.72	220.86	305.44	278.89	278.89	258.46
IL-6 (pg/mL)	0-5.3	-	-	7.18	7.12	27.82	918.02
IL-8 (pg/mL)	0-20.6	-	-	9.55	10.21	17.73	230.94
$\omega$ -3-C22:5 ( $\mu$ mol/L)	0.74-3.11	-	-	0.448	0.529	0.348	0.295
$\omega$ -6-C22:5 ( $\mu$ mol/L)	0.37-1.86	-	-	0.293	0.193	0.138	0.136
$\omega$ -6/ $\omega$ -3	< 10	-	-	13.68	18.75	27.01	8.04
UDCA (nmol/L)	40-758	-	-	4.6	4.7	11.3	13.9

<sup>1</sup>Preoperative.<sup>2</sup>After surgery.<sup>3</sup>After three cycles of "DP" chemotherapy.<sup>4</sup>After two cycles of "XELOX" chemotherapy.<sup>5</sup>After two cycles of immunotherapy.<sup>6</sup>2 mo after giving up treatment.

CA72-4: Carbohydrate antigen 72-4; CEA: Carcinoembryonic antigen; AFP: Alpha-fetoprotein; NLR: Neutrophil-lymphocyte ratio; LMR: Lymphocyte-monocyte ratio; PLR: Platelet-lymphocyte ratio; IL-6: Interleukin-6; IL-8: Interleukin-8; UDCA: Ursodeoxycholic acid.

associated with poor OS/cancer-specific survival, event-free survival, and malignant phenotype in tumors such as ESCC [36]. In this case, although the preoperative NLR was only 2.09, the LMR was at a low level during radical treatment of esophageal cancer (Table 2), and the PLR was at a high level. These findings are consistent with the poor prognosis of this patient. The overall surveillance trend showed a progressive increase in NLR accompanied by the development of DA and the development of metastases; the opposite was true for LMR. These observations suggest that lower lymphocyte counts and relatively weak anti-tumor immunity may contribute to increased tumor size and poor prognosis. Additionally, the circulating blood inflammation-associated cytokine interleukin-6 (IL-6) is considered a typical pro-tumor cytokine in the IL-6 cytokine family. It is involved in the formation of the local TME and is considered a hallmark feature of tumor growth initiation and progression[37,38]. IL-8 is a pro-inflammatory chemokine, and/or its receptors are expressed in cancer cells, endothelial cells, and TAMs. Increased expression of IL-8 is associated with tumor angiogenesis, tumorigenicity, and metastasis[39]. The present patient had high IL-6 levels (7.18 pg/mL; normal range: 0-5.3 pg/mL) at the time of diagnosis of DA, showing a progressive increase with tumor progression. Following the discontinuation of chemotherapy, the levels of IL-6 and IL-8 rose rapidly at 918.02 pg/mL and 230.94 pg/mL, respectively. These data were highly suggestive of rapid disease progression.

Finally, reprogramming of lipid metabolism is one of the most prominent metabolic alterations in cancer, including fatty acid and bile acid (BA). It has been suggested that  $\omega$ -3 polyunsaturated fatty acids (PUFA) may exert an anti-angiogenesis effect in tumors, inhibit cancer cell invasion and metastasis, and reverse chemotherapy multi-drug resistance in tumor cells. In contrast,  $\omega$ -6 PUFA and total PUFA may exacerbate the risk of cancer[40]. According to the fatty acid metabolism indices of this patient (Table 2), the levels of  $\omega$ -3 PUFA were low, while those of  $\omega$ -6/ $\omega$ -3 were higher than the maximum normal value of 10. The high levels of eicosatetraenoic acid, which belongs to the  $\omega$ -6 group, led to the analysis of the predominance of cancer-promoting factors in this case. Predominance of pro-carcinogenic factors was suggested. In addition, the high-BA environment could promote apoptosis and inhibit the migration of cancer cells, particularly in colon cancer cells[41,42]. However, BA is metabolized by the intestinal microbiota; disruption of the balance between the two systems can lead to abnormal BA concentrations and pools, triggering the abnormal proliferation of intestinal stem cells[41]. In particular, it is thought that ursodeoxycholic acid enhances anti-tumor immunity by degrading transforming growth factor- $\beta$ , thereby inhibiting the differentiation and activation of regulatory T cells. Moreover, it synergizes with PD-L1 to enhance tumor-specific immune memory[43]. Consequently, the levels of ursodeoxycholic acid in this patient were low throughout the evaluation. This observation is associated, to some extent, with the continuous progression of DA and poor efficacy of immunotherapy.

Currently, there are no standard guidelines or expert consensus for the comprehensive treatment of MPMNs. Therapy is generally based on a combination of several factors, such as patient age, clinicopathological features of the different

tumors, biological and genomic expression profiles, life expectancy, and comorbid diseases. For MC-MPMNs, the treatment approach invariably involves sequential treatment of all tumors; however, for SC-MPMNs, individualized and unique treatment plans are generally developed after multidisciplinary discussions[44]. In this case, the patient presented with two successive asynchronous tumors of different histological origins, namely esophageal squamous epithelial carcinoma and DA. Therefore, radical surgery combined with adjuvant chemotherapy was performed for the esophageal tumor, and complete remission was achieved. For the DA and liver metastases, oxaliplatin-based regimens appear to be the most commonly used and effective options in first-line treatment[45]. In this case, the preferred XELOX regimen did not prevent PD after two cycles of chemotherapy. This unsatisfactory outcome may be attributed to the development of adverse effects linked to chemotherapy for ESCC, such as malnutrition, and bone marrow suppression. These effects are poorly tolerated by patients with a poor physical status. The combination of metastases suggests that the tumor has progressed to an advanced stage and the general treatment is less effective. Mouse double minute 2 (*MDM2*) in genomics may reduce the efficacy of chemotherapeutic agents, such as platinum, by inhibiting the action of *TP53*. It has also been suggested that 5-fluorouracil and capecitabine exhibit poorer efficacy in patients with *TP53* mutation *vs* wild-type *TP53* [46].

The role and efficacy of emerging immunotherapies in DA are currently under investigation. The investigators of the phase II KEYNOTE-158 study concluded that pembrolizumab is an effective option for previously treated patients with MSI-high small bowel adenocarcinoma[47]. Given the possible benefit of immunosuppression with negative PD-L1 expression, this patient was treated with sintilimab in combination with second-line therapy.

However, the effectiveness of immunotherapy is limited, probably due to the following reasons. Firstly, the patient was in an immunosuppressed state before immunotherapy: The CD4+ and CD8+ T cells in three tumor tissues were poorly infiltrated, and immune cells (*e.g.*, lymphocytes, B cells, and natural killer cells) in peripheral blood were below the normal range, particularly neutrophils, CD4+ T and CD8+ T cells. Therefore, overcoming the immunosuppressed state is a major challenge for immunotherapy. Secondly, the PD-L1 expression in the second primary cancer was negative. As an immune checkpoint inhibitor (ICI), sintilimab cannot block the immune checkpoint pathway or reactivate T cell-mediated anti-tumor immunity. Thirdly, the low tumor mutational burden in all three pathological tissues indicates that neoantigens are not exposed to the immune system, thus affecting ICI therapy. Fourthly, both primary carcinomas and metastases are in a microsatellite stable state/pMMR. The immune escape mechanisms in these tumors include the expression of relatively low levels of immunosuppressive ligands, low tumor mutational load, and lack of immune cell infiltration, compromising the effectiveness of immunotherapy. Fifthly, the mutational status of *TP53* (an important oncogene in humans) correlated with the efficacy of ICIs. Sixthly, *MDM2* gene amplification in liver metastatic tumor tissues and immunohistochemical analysis of the duodenal pathology suggested the involvement of epidermal growth factor receptor (2+), which is associated with hyper-progression during immunotherapy[48]. Finally, peripheral blood findings indicated the presence of Epstein-Barr virus, which is thought to transform tumor precursor cells into Epstein-Barr virus-associated malignancies, and can shape the immunosuppressive microenvironment to induce oncogenesis[49, 50]. It is proposed that the poor efficacy and poor prognosis observed in this patient are the results of multiple factors and omics-coordinated regulation.

## CONCLUSION

In this article, we report the case of a middle-aged male with MC-MPMNs, diagnosed with ESCC and DA with liver and bone metastases after an 8.4-mo interval. Based on clinical and pathological features, chemotherapy and immunotherapy were administered against the second primary tumor after multidisciplinary treatment. The patient had an OS of 16.6 mo. Such cases raise awareness among clinicians regarding MPMNs. Although the incidence of MPMNs is low, regular follow-up, vigilance, and comprehensive analysis are crucial for the diagnosis of second primary malignancies. Moreover, in addition to tumor markers, endoscopy, and imaging techniques, emerging inflammatory immunomarkers, genomics, immunomics, and metabolomics can reveal the high heterogeneity of tumors. This approach may facilitate the selection of treatment, improve efficacy, and predict prognosis. Due to the rarity of MPMNs, enhanced collaboration among multiple clinical centers is warranted to conduct prospective clinical studies. Such studies would require expanded sample sizes for TME and multi-omics studies concerning MPMNs.

## FOOTNOTES

**Co-first authors:** Chun-Chun Huang and Le-Qian Ying.

**Author contributions:** Huang CC and Ying LQ equally contributed to manuscript writing and editing, and data collection; Ji M and Zhang L contributed to data analysis; Chen YP and Liu L contributed to conceptualization and supervision; and all authors have read and approved the final manuscript.

**Informed consent statement:** All study participants, or their legal guardian, provided informed written consent prior to study enrollment.

**Conflict-of-interest statement:** All the authors report no relevant conflicts of interest for this article.

**CARE Checklist (2016) statement:** The authors have read the CARE Checklist (2016), and the manuscript was prepared and revised



according to the CARE Checklist (2016).

**Open-Access:** This article is an open-access article that was selected by an in-house editor and fully peer-reviewed by external reviewers. It is distributed in accordance with the Creative Commons Attribution NonCommercial (CC BY-NC 4.0) license, which permits others to distribute, remix, adapt, build upon this work non-commercially, and license their derivative works on different terms, provided the original work is properly cited and the use is non-commercial. See: <https://creativecommons.org/licenses/by-nc/4.0/>

**Country/Territory of origin:** China

**ORCID number:** Chun-Chun Huang 0009-0004-1331-0304; Le-Qian Ying 0000-0001-9846-6527; Yan-Ping Chen 0009-0004-8922-4373; Min Ji 0009-0007-3642-6539; Lu Zhang 0000-0003-2065-2287; Lin Liu 0000-0002-9606-3545.

**S-Editor:** Wang JJ

**L-Editor:** A

**P-Editor:** Yuan YY

## REFERENCES

- Warren S. Multiple primary malignant tumors: a survey of the literature and statistical study. *Am J Cancer* 1932; **16**: 1358-1414
- Moertel CG, Dockerty MB, Baggenstoss AH. Multiple primary malignant neoplasms. II. Tumors of different tissues or organs. *Cancer* 1961; **14**: 231-237 [PMID: 13771653 DOI: 10.1002/1097-0142(196103/04)14:2<231::aid-cnrcr2820140203>3.0.co;2-2]
- Tripodi D, Cannistra C, Gagliardi F, Casella G, Lauro A, De Luca A, Amabile MI, Palumbo P, Pironi D, Mascagni D, D'Andrea V, Vergine M, Sorrenti S. Coincidental or Causal? Concurrence of Colorectal Carcinoma with Primary Breast Cancer. *Dig Dis Sci* 2022; **67**: 437-444 [PMID: 34731362 DOI: 10.1007/s10620-021-07296-5]
- Liu Z, Liu C, Guo W, Li S, Bai O. Clinical analysis of 152 cases of multiple primary malignant tumors in 15,398 patients with malignant tumors. *PLoS One* 2015; **10**: e0125754 [PMID: 25945938 DOI: 10.1371/journal.pone.0125754]
- Feller A, Matthes KL, Bordoni A, Bouchardy C, Bulliard JL, Herrmann C, Konzelmann I, Maspoli M, Mousavi M, Rohrmann S, Staehelin K, Arndt V; NICER Working Group. The relative risk of second primary cancers in Switzerland: a population-based retrospective cohort study. *BMC Cancer* 2020; **20**: 51 [PMID: 31964352 DOI: 10.1186/s12885-019-6452-0]
- Si L, Feng Y, Wang Y, Zhong J, Sun Z, Li X, Sun Y. Clinical and pathological characteristics of multiple primary malignant neoplasms cases. *Int J Clin Pract* 2021; **75**: e14663 [PMID: 34387916 DOI: 10.1111/ijcp.14663]
- van de Ven SEM, Falger JM, Verhoeven RHA, Baatenburg de Jong RJ, Spaander MCW, Bruno MJ, Koch AD. Increased risk of second primary tumours in patients with oesophageal squamous cell carcinoma: a nationwide study in a Western population. *United European Gastroenterol J* 2021; **9**: 497-506 [PMID: 33270530 DOI: 10.1177/2050640620977129]
- Muto M, Takahashi M, Ohtsu A, Ebihara S, Yoshida S, Esumi H. Risk of multiple squamous cell carcinomas both in the esophagus and the head and neck region. *Carcinogenesis* 2005; **26**: 1008-1012 [PMID: 15718256 DOI: 10.1093/carcin/bgi035]
- Campanile F, Maurea S, Mainenti P, Corvino A, Imbriaco M. Duodenal involvement by breast cancer. *Breast J* 2012; **18**: 615-616 [PMID: 23110410 DOI: 10.1111/tbj.12034]
- Buchbjerg T, Frisrup C, Mortensen MB. The incidence and prognosis of true duodenal carcinomas. *Surg Oncol* 2015; **24**: 110-116 [PMID: 25936244 DOI: 10.1016/j.suronc.2015.04.004]
- Medina-Franco H, Halpern NB, Aldrete JS. Pancreaticoduodenectomy for metastatic tumors to the perianapillary region. *J Gastrointest Surg* 1999; **3**: 119-122 [PMID: 10457332 DOI: 10.1016/s1091-255x(99)80019-5]
- Corvino A, Setola SV, Sandomenico F, Corvino F, Catalano O. Synchronous tumours detected during cancer patient staging: prevalence and patterns of occurrence in multidetector computed tomography. *Pol J Radiol* 2020; **85**: e261-e270 [PMID: 32612725 DOI: 10.5114/pjr.2020.95781]
- Corvino A, Corvino F, Radice L, Catalano O. Synchronous mucinous colonic adenocarcinoma and multiple small intestinal adenocarcinomas: report of a case and review of literature. *Clin Imaging* 2015; **39**: 538-542 [PMID: 25744428 DOI: 10.1016/j.clinimag.2014.12.019]
- Wang H, Hou J, Zhang G, Zhang M, Li P, Yan X, Ma Z. Clinical characteristics and prognostic analysis of multiple primary malignant neoplasms in patients with lung cancer. *Cancer Gene Ther* 2019; **26**: 419-426 [PMID: 30700800 DOI: 10.1038/s41417-019-0084-z]
- Etiz D, Metcalfe E, Akcay M. Multiple primary malignant neoplasms: A 10-year experience at a single institution from Turkey. *J Cancer Res Ther* 2017; **13**: 16-20 [PMID: 28508827 DOI: 10.4103/0973-1482.183219]
- Cybulski C, Nazarali S, Narod SA. Multiple primary cancers as a guide to heritability. *Int J Cancer* 2014; **135**: 1756-1763 [PMID: 24945890 DOI: 10.1002/ijc.28988]
- Peng L, Zeng Z, Teng X, Chen Z, Lin L, Bao H, Shao YW, Wang Y, Dong Y, Zhao Q. Genomic profiling of synchronous triple primary tumors of the lung, thyroid and kidney in a young female patient: A case report. *Oncol Lett* 2018; **16**: 6089-6094 [PMID: 30344752 DOI: 10.3892/ol.2018.9334]
- Kang GH, Kim CJ, Kim WH, Kang YK, Kim HO, Kim YI. Genetic evidence for the multicentric origin of synchronous multiple gastric carcinoma. *Lab Invest* 1997; **76**: 407-417 [PMID: 9121123]
- Gao YB, Chen ZL, Li JG, Hu XD, Shi XJ, Sun ZM, Zhang F, Zhao ZR, Li ZT, Liu ZY, Zhao YD, Sun J, Zhou CC, Yao R, Wang SY, Wang P, Sun N, Zhang BH, Dong JS, Yu Y, Luo M, Feng XL, Shi SS, Zhou F, Tan FW, Qiu B, Li N, Shao K, Zhang LJ, Xue Q, Gao SG, He J. Genetic landscape of esophageal squamous cell carcinoma. *Nat Genet* 2014; **46**: 1097-1102 [PMID: 25151357 DOI: 10.1038/ng.3076]
- Bi Y, Kong P, Zhang L, Cui H, Xu X, Chang F, Yan T, Li J, Cheng C, Song B, Niu X, Liu X, Xu E, Hu X, Qian Y, Wang F, Li H, Ma Y, Yang J, Liu Y, Zhai Y, Wang Y, Zhang Y, Liu H, Liu J, Wang J, Cui Y, Cheng X. EP300 as an oncogene correlates with poor prognosis in esophageal squamous carcinoma. *J Cancer* 2019; **10**: 5413-5426 [PMID: 31632486 DOI: 10.7150/jca.34261]
- Song Y, Li L, Ou Y, Gao Z, Li E, Li X, Zhang W, Wang J, Xu L, Zhou Y, Ma X, Liu L, Zhao Z, Huang X, Fan J, Dong L, Chen G, Ma L,

- Yang J, Chen L, He M, Li M, Zhuang X, Huang K, Qiu K, Yin G, Guo G, Feng Q, Chen P, Wu Z, Wu J, Zhao J, Luo L, Fu M, Xu B, Chen B, Li Y, Tong T, Wang M, Liu Z, Lin D, Zhang X, Yang H, Zhan Q. Identification of genomic alterations in oesophageal squamous cell cancer. *Nature* 2014; **509**: 91-95 [PMID: [24670651](#) DOI: [10.1038/nature13176](#)]
- 22 **Schrock AB**, Devoe CE, McWilliams R, Sun J, Aparicio T, Stephens PJ, Ross JS, Wilson R, Miller VA, Ali SM, Overman MJ. Genomic Profiling of Small-Bowel Adenocarcinoma. *JAMA Oncol* 2017; **3**: 1546-1553 [PMID: [28617917](#) DOI: [10.1001/jamaoncol.2017.1051](#)]
- 23 **Cercato MC**, Colella E, Ferraresi V, Diodoro MG, Tonachella R. Report of two cases of quintuple primary malignancies and review of the literature. *Anticancer Res* 2008; **28**: 2953-2958 [PMID: [19031939](#)]
- 24 **ten Kate GL**, Kleibeuker JH, Nagengast FM, Craanen M, Cats A, Menko FH, Vasen HF. Is surveillance of the small bowel indicated for Lynch syndrome families? *Gut* 2007; **56**: 1198-1201 [PMID: [17409122](#) DOI: [10.1136/gut.2006.118299](#)]
- 25 **Hu JM**, Liu K, Liu JH, Jiang XL, Wang XL, Chen YZ, Li SG, Zou H, Pang LJ, Liu CX, Cui XB, Yang L, Zhao J, Shen XH, Jiang JF, Liang WH, Yuan XL, Li F. CD163 as a marker of M2 macrophage, contribute to predict aggressiveness and prognosis of Kazakh esophageal squamous cell carcinoma. *Oncotarget* 2017; **8**: 21526-21538 [PMID: [28423526](#) DOI: [10.18632/oncotarget.15630](#)]
- 26 **Sugimura K**, Miyata H, Tanaka K, Takahashi T, Kurokawa Y, Yamasaki M, Nakajima K, Takiguchi S, Mori M, Doki Y. High infiltration of tumor-associated macrophages is associated with a poor response to chemotherapy and poor prognosis of patients undergoing neoadjuvant chemotherapy for esophageal cancer. *J Surg Oncol* 2015; **111**: 752-759 [PMID: [25752960](#) DOI: [10.1002/jso.23881](#)]
- 27 **Yang H**, Zhang Q, Xu M, Wang L, Chen X, Feng Y, Li Y, Zhang X, Cui W, Jia X. CCL2-CCR2 axis recruits tumor associated macrophages to induce immune evasion through PD-1 signaling in esophageal carcinogenesis. *Mol Cancer* 2020; **19**: 41 [PMID: [32103760](#) DOI: [10.1186/s12943-020-01165-x](#)]
- 28 **Wang XL**, Liu K, Liu JH, Jiang XL, Qi LW, Xie YF, Li JF, Yang L, Chen YZ, Liu CX, Li SG, Cui XB, Zou H, Pang LJ, Zhao J, Qi Y, Cao YW, Liang WH, Jiang JF, Shen XH, Yuan XL, Hu JM, Li F. High infiltration of CD68-tumor associated macrophages, predict poor prognosis in Kazakh esophageal cancer patients. *Int J Clin Exp Pathol* 2017; **10**: 10282-10292 [PMID: [31966363](#)]
- 29 **Tang Y**, Liu JH, Shi ZX, Li Z, Liu HT, Lu P. MicroRNA-133b suppresses cell proliferation and invasion of esophageal squamous cell carcinoma via downregulating TAGLN2 expression. *Zhonghua Zhong Liu Za Zhi* 2019; **41**: 91-96 [PMID: [30862136](#) DOI: [10.3760/cma.j.issn.0253-3766.2019.02.003](#)]
- 30 **Minami K**, Hiwatashi K, Ueno S, Sakoda M, Iino S, Okumura H, Hashiguchi M, Kawasaki Y, Kurahara H, Mataka Y, Maemura K, Shinchi H, Natsugoe S. Prognostic significance of CD68, CD163 and Folate receptor- $\beta$  positive macrophages in hepatocellular carcinoma. *Exp Ther Med* 2018; **15**: 4465-4476 [PMID: [29731831](#) DOI: [10.3892/etm.2018.5959](#)]
- 31 **Eruslanov EB**, Bhojnarwala PS, Quatromoni JG, Stephen TL, Ranganathan A, Deshpande C, Akimova T, Vachani A, Litzky L, Hancock WW, Conejo-Garcia JR, Feldman M, Albelda SM, Singhal S. Tumor-associated neutrophils stimulate T cell responses in early-stage human lung cancer. *J Clin Invest* 2014; **124**: 5466-5480 [PMID: [25384214](#) DOI: [10.1172/JCI77053](#)]
- 32 **Shen M**, Hu P, Donskov F, Wang G, Liu Q, Du J. Tumor-associated neutrophils as a new prognostic factor in cancer: a systematic review and meta-analysis. *PLoS One* 2014; **9**: e98259 [PMID: [24906014](#) DOI: [10.1371/journal.pone.0098259](#)]
- 33 **Li B**, Xiong F, Yi S, Wang S. Prognostic and Clinicopathologic Significance of Neutrophil-to-Lymphocyte Ratio in Esophageal Cancer: An Update Meta-Analysis. *Technol Cancer Res Treat* 2022; **21**: 15330338211070140 [PMID: [35025614](#) DOI: [10.1177/15330338211070140](#)]
- 34 **Lv X**, Han S, Xu B, Deng Y, Feng Y. The value of complete blood count for the prognosis analysis of preoperative esophageal squamous cell carcinoma. *BMC Cancer* 2021; **21**: 1072 [PMID: [34592957](#) DOI: [10.1186/s12885-021-08789-2](#)]
- 35 **Shi J**, Liu S, Cao J, Shan S, Zhang J, Wang Y. Development and validation of lymph node ratio-based nomograms for primary duodenal adenocarcinoma after surgery. *Front Oncol* 2022; **12**: 962381 [PMID: [36276093](#) DOI: [10.3389/fonc.2022.962381](#)]
- 36 **Sun Y**, Zhang L. The clinical use of pretreatment NLR, PLR, and LMR in patients with esophageal squamous cell carcinoma: evidence from a meta-analysis. *Cancer Manag Res* 2018; **10**: 6167-6179 [PMID: [30538564](#) DOI: [10.2147/CMAR.S171035](#)]
- 37 **Jones SA**, Jenkins BJ. Recent insights into targeting the IL-6 cytokine family in inflammatory diseases and cancer. *Nat Rev Immunol* 2018; **18**: 773-789 [PMID: [30254251](#) DOI: [10.1038/s41577-018-0066-7](#)]
- 38 **Taniguchi K**, Karin M. IL-6 and related cytokines as the critical lynchpins between inflammation and cancer. *Semin Immunol* 2014; **26**: 54-74 [PMID: [24552665](#) DOI: [10.1016/j.smim.2014.01.001](#)]
- 39 **Waugh DJ**, Wilson C. The interleukin-8 pathway in cancer. *Clin Cancer Res* 2008; **14**: 6735-6741 [PMID: [18980965](#) DOI: [10.1158/1078-0432.CCR-07-4843](#)]
- 40 **Hanson S**, Thorpe G, Winstanley L, Abdelhamid AS, Hooper L, PUFAH group. Omega-3, omega-6 and total dietary polyunsaturated fat on cancer incidence: systematic review and meta-analysis of randomised trials. *Br J Cancer* 2020; **122**: 1260-1270 [PMID: [32114592](#) DOI: [10.1038/s41416-020-0761-6](#)]
- 41 **Wang S**, Dong W, Liu L, Xu M, Wang Y, Liu T, Zhang Y, Wang B, Cao H. Interplay between bile acids and the gut microbiota promotes intestinal carcinogenesis. *Mol Carcinog* 2019; **58**: 1155-1167 [PMID: [30828892](#) DOI: [10.1002/mc.22999](#)]
- 42 **Jia W**, Xie G, Jia W. Bile acid-microbiota crosstalk in gastrointestinal inflammation and carcinogenesis. *Nat Rev Gastroenterol Hepatol* 2018; **15**: 111-128 [PMID: [29018272](#) DOI: [10.1038/nrgastro.2017.119](#)]
- 43 **Shen Y**, Lu C, Song Z, Qiao C, Wang J, Chen J, Zhang C, Zeng X, Ma Z, Chen T, Li X, Lin A, Guo J, Cai Z. Ursodeoxycholic acid reduces antitumor immunosuppression by inducing CHIP-mediated TGF- $\beta$  degradation. *Nat Commun* 2022; **13**: 3419 [PMID: [35701426](#) DOI: [10.1038/s41467-022-31141-6](#)]
- 44 **Ágoston EI**, Somorácz Á, Madaras L, Zaránd A, Szentmártoni G, Orosz Z, Dank M, Baranyai Z. Successful treatment of three synchronous primary malignant tumours-reflection on surgical, pathological and oncological aspects and decision making. *J Surg Case Rep* 2018; **2018**: rjy041 [PMID: [29657704](#) DOI: [10.1093/jscr/rjy041](#)]
- 45 **Overman MJ**, Varadhachary GR, Kopetz S, Adinin R, Lin E, Morris JS, Eng C, Abbruzzese JL, Wolff RA. Phase II study of capecitabine and oxaliplatin for advanced adenocarcinoma of the small bowel and ampulla of Vater. *J Clin Oncol* 2009; **27**: 2598-2603 [PMID: [19164203](#) DOI: [10.1200/JCO.2008.19.7145](#)]
- 46 **Sabeti Aghabozorgi A**, Moradi Sarabi M, Jafarzadeh-Esfehani R, Koochakkhani S, Hassanzadeh M, Kavousipour S, Eftekhari E. Molecular determinants of response to 5-fluorouracil-based chemotherapy in colorectal cancer: The undisputable role of micro-ribonucleic acids. *World J Gastrointest Oncol* 2020; **12**: 942-956 [PMID: [33005290](#) DOI: [10.4251/wjgo.v12.i9.942](#)]
- 47 **Marabelle A**, Le DT, Ascierto PA, Di Giacomo AM, De Jesus-Acosta A, Delord JP, Geva R, Gottfried M, Penel N, Hansen AR, Piha-Paul SA, Doi T, Gao B, Chung HC, Lopez-Martin J, Bang YJ, Frommer RS, Shah M, Ghorri R, Joe AK, Pruitt SK, Diaz LA Jr. Efficacy of Pembrolizumab in Patients With Noncolorectal High Microsatellite Instability/Mismatch Repair-Deficient Cancer: Results From the Phase II KEYNOTE-158 Study. *J Clin Oncol* 2020; **38**: 1-10 [PMID: [31682550](#) DOI: [10.1200/JCO.19.02105](#)]

- 48 **Kato S**, Goodman A, Walavalkar V, Barkauskas DA, Sharabi A, Kurzrock R. Hyperprogressors after Immunotherapy: Analysis of Genomic Alterations Associated with Accelerated Growth Rate. *Clin Cancer Res* 2017; **23**: 4242-4250 [PMID: 28351930 DOI: 10.1158/1078-0432.CCR-16-3133]
- 49 **de Martel C**, Ferlay J, Franceschi S, Vignat J, Bray F, Forman D, Plummer M. Global burden of cancers attributable to infections in 2008: a review and synthetic analysis. *Lancet Oncol* 2012; **13**: 607-615 [PMID: 22575588 DOI: 10.1016/S1470-2045(12)70137-7]
- 50 **Tan GW**, Visser L, Tan LP, van den Berg A, Diepstra A. The Microenvironment in Epstein-Barr Virus-Associated Malignancies. *Pathogens* 2018; **7** [PMID: 29652813 DOI: 10.3390/pathogens7020040]



Published by **Baishideng Publishing Group Inc**  
7041 Koll Center Parkway, Suite 160, Pleasanton, CA 94566, USA

**Telephone:** +1-925-3991568

**E-mail:** [bpgoffice@wjgnet.com](mailto:bpgoffice@wjgnet.com)

**Help Desk:** <https://www.f6publishing.com/helpdesk>

<https://www.wjgnet.com>

