

World Journal of *Gastrointestinal Surgery*

World J Gastrointest Surg 2023 October 27; 15(10): 2098-2381



Contents

Monthly Volume 15 Number 10 October 27, 2023

MINIREVIEWS

- 2098** Minimally invasive surgery for post cholecystectomy biliary stricture: current evidence and future perspectives

Kalayarasan R, Sai Krishna P

- 2108** From basic to clinical: Anatomy of Denonvilliers' fascia and its application in laparoscopic radical resection of rectal cancer

Chen Z, Zhang XJ, Chang HD, Chen XQ, Liu SS, Wang W, Chen ZH, Ma YB, Wang L

ORIGINAL ARTICLE

Basic Study

- 2115** Effects of thrombopoietin pre-treatment on peri-liver transplantation thrombocytopenia in a mouse model of cirrhosis with hypersplenism

Liu ZR, Zhang YM, Cui ZL, Tong W

Retrospective Cohort Study

- 2123** Effect of low anterior resection syndrome on quality of life in colorectal cancer patients: A retrospective observational study

Jin DA, Gu FP, Meng TL, Zhang XX

- 2133** Stent fracture after transjugular intrahepatic portosystemic shunt placement using the bare metal stent/stent-graft combination technique

Liu QJ, Cao XF, Pei Y, Li X, Dong GX, Wang CM

Retrospective Study

- 2142** Robotic natural orifice specimen extraction surgery I-type F method *vs* conventional robotic resection for lower rectal cancer

Tao F, Liu DN, He PH, Luo X, Xu CY, Li TY, Duan JY

- 2154** Gene polymorphisms associated with sudden decreases in heart rate during extensive peritoneal lavage with distilled water after gastrectomy

Yao S, Yuan Y, Zhang J, Yu Y, Luo GH

- 2171** Analgesic effect of ultrasound-guided bilateral transversus abdominis plane block in laparoscopic gastric cancer

Wang YY, Fu HJ

- 2179** Effects of an Omaha System-based follow-up regimen on self-care and quality of life in gastrointestinal surgery patients

Li YD, Qu N, Yang J, Lv CY, Tang Y, Li P

- 2191** Optimizing surgical outcomes for elderly gallstone patients with a high body mass index using enhanced recovery after surgery protocol
Gu YX, Wang XY, Chen Y, Shao JX, Ni SX, Zhang XM, Shao SY, Zhang Y, Hu WJ, Ma YY, Liu MY, Yu H
- 2201** Establishment and application of three predictive models of anastomotic leakage after rectal cancer sphincter-preserving surgery
Li HY, Zhou JT, Wang YN, Zhang N, Wu SF
- 2211** Identification of multiple risk factors for colorectal cancer relapse after laparoscopic radical resection
Luo J, He MW, Luo T, Lv GQ
- 2222** Examining the impact of early enteral nutritional support on postoperative recovery in patients undergoing surgical treatment for gastrointestinal neoplasms
Chen Z, Hong B, He JJ, Ye QQ, Hu QY
- 2234** Predicting lymph node metastasis in colorectal cancer: An analysis of influencing factors to develop a risk model
Lei YP, Song QZ, Liu S, Xie JY, Lv GQ
- 2247** Novel prognostic score based on the preoperative total bilirubin-albumin ratio and fibrinogen-albumin ratio in ampullary adenocarcinoma
Zhang XJ, Fei H, Sun CY, Li ZF, Li Z, Guo CG, Zhao DB
- 2259** Analysis of textbook outcomes for ampullary carcinoma patients following pancreaticoduodenectomy
Zhang XJ, Fei H, Guo CG, Sun CY, Li ZF, Li Z, Chen YT, Che X, Zhao DB
- 2272** Endoscopic retrograde cholangiopancreatography for diagnosing and treating pediatric biliary and pancreatic diseases
Qin XM, Yu FH, Lv CK, Liu ZM, Wu J

SYSTEMATIC REVIEWS

- 2280** Systematic review of diagnostic tools for peritoneal metastasis in gastric cancer-staging laparoscopy and its alternatives
Ho SYA, Tay KV
- 2294** Prediction of lymph node metastasis in early esophageal cancer
Li Y, Wang JX, Yibi RH
- 2305** Hepatobiliary tuberculosis in the developing world
Esguerra-Paculan MJA, Soldera J

META-ANALYSIS

- 2320** Timing of surgical operation for patients with intra-abdominal infection: A systematic review and meta-analysis
Song SR, Liu YY, Guan YT, Li RJ, Song L, Dong J, Wang PG

- 2331** Bariatric surgery reduces colorectal cancer incidence in obese individuals: Systematic review and meta-analysis

Liu YN, Gu JF, Zhang J, Xing DY, Wang GQ

CASE REPORT

- 2343** Postpolypectomy syndrome without abdominal pain led to sepsis/septic shock and gastrointestinal bleeding: A case report

Chen FZ, Ouyang L, Zhong XL, Li JX, Zhou YY

- 2351** Three-dimensional computed tomography reconstruction diagnosed digestive tract perforation and acute peritonitis caused by *Monopterus albus*: A case report

Yang JH, Lan JY, Lin AY, Huang WB, Liao JY

- 2357** Gastric adenosquamous carcinoma with an elevated serum level of alpha-fetoprotein: A case report

Sun L, Wei JJ, An R, Cai HY, Lv Y, Li T, Shen XF, Du JF, Chen G

- 2362** Mucocutaneous ulcer positive for Epstein-Barr virus, misdiagnosed as a small bowel adenocarcinoma: A case report

Song JH, Choi JE, Kim JS

- 2367** Hereditary hemorrhagic telangiectasia involving portal venous system: A case report and review of the literature

Wu JL, Zhao ZZ, Chen J, Zhang HW, Luan Z, Li CY, Zhao YM, Jing YJ, Wang SF, Sun G

- 2376** Giant dedifferentiated liposarcoma of the gastrocolic ligament: A case report

Kassi ABF, Yenon KS, Kassi FMH, Adjeme AJ, Diarra KM, Bombet-Kouame C, Kouassi M

ABOUT COVER

Editorial Board Member of *World Journal of Gastrointestinal Surgery*, Giuseppe Zimmiti, MD, PhD, Adjunct Professor, Attending Doctor, Postdoctoral Fellow, Surgical Oncologist, Department of General Surgery, Istituto Ospedaliero Fondazione Poliambulanza, Brescia 25124, Lombardia, Italy. giuseppe.zimmiti@poliambulanza.it

AIMS AND SCOPE

The primary aim of *World Journal of Gastrointestinal Surgery* (WJGS, *World J Gastrointest Surg*) is to provide scholars and readers from various fields of gastrointestinal surgery with a platform to publish high-quality basic and clinical research articles and communicate their research findings online.

WJGS mainly publishes articles reporting research results and findings obtained in the field of gastrointestinal surgery and covering a wide range of topics including biliary tract surgical procedures, biliopancreatic diversion, colectomy, esophagectomy, esophagostomy, pancreas transplantation, and pancreatectomy, etc.

INDEXING/ABSTRACTING

The WJGS is now abstracted and indexed in Science Citation Index Expanded (SCIE, also known as SciSearch®), Current Contents/Clinical Medicine, Journal Citation Reports/Science Edition, PubMed, PubMed Central, Reference Citation Analysis, China National Knowledge Infrastructure, China Science and Technology Journal Database, and Superstar Journals Database. The 2023 Edition of Journal Citation Reports® cites the 2022 impact factor (IF) for WJGS as 2.0; IF without journal self cites: 1.9; 5-year IF: 2.2; Journal Citation Indicator: 0.52; Ranking: 113 among 212 journals in surgery; Quartile category: Q3; Ranking: 81 among 93 journals in gastroenterology and hepatology; and Quartile category: Q4.

RESPONSIBLE EDITORS FOR THIS ISSUE

Production Editor: Zi-Hang Xu, Production Department Director: Xiang Li, Editorial Office Director: Jia-Ru Fan.

NAME OF JOURNAL

World Journal of Gastrointestinal Surgery

ISSN

ISSN 1948-9366 (online)

LAUNCH DATE

November 30, 2009

FREQUENCY

Monthly

EDITORS-IN-CHIEF

Peter Schemmer

EDITORIAL BOARD MEMBERS

<https://www.wjgnet.com/1948-9366/editorialboard.htm>

PUBLICATION DATE

October 27, 2023

COPYRIGHT

© 2023 Baishideng Publishing Group Inc

INSTRUCTIONS TO AUTHORS

<https://www.wjgnet.com/bpg/gerinfo/204>

GUIDELINES FOR ETHICS DOCUMENTS

<https://www.wjgnet.com/bpg/GerInfo/287>

GUIDELINES FOR NON-NATIVE SPEAKERS OF ENGLISH

<https://www.wjgnet.com/bpg/gerinfo/240>

PUBLICATION ETHICS

<https://www.wjgnet.com/bpg/GerInfo/288>

PUBLICATION MISCONDUCT

<https://www.wjgnet.com/bpg/gerinfo/208>

ARTICLE PROCESSING CHARGE

<https://www.wjgnet.com/bpg/gerinfo/242>

STEPS FOR SUBMITTING MANUSCRIPTS

<https://www.wjgnet.com/bpg/GerInfo/239>

ONLINE SUBMISSION

<https://www.f6publishing.com>



Bariatric surgery reduces colorectal cancer incidence in obese individuals: Systematic review and meta-analysis

Ying-Ning Liu, Jing-Feng Gu, Jian Zhang, Dong-Yang Xing, Gui-Qi Wang

Specialty type: Gastroenterology and hepatology

Provenance and peer review:

Unsolicited article; Externally peer reviewed.

Peer-review model: Single blind

Peer-review report's scientific quality classification

Grade A (Excellent): 0
Grade B (Very good): B
Grade C (Good): C
Grade D (Fair): 0
Grade E (Poor): 0

P-Reviewer: Bustamante-Lopez LA, Brazil; Salimi M, Iran

Received: July 9, 2023

Peer-review started: July 9, 2023

First decision: August 10, 2023

Revised: August 14, 2023

Accepted: August 21, 2023

Article in press: August 21, 2023

Published online: October 27, 2023



Ying-Ning Liu, Jing-Feng Gu, Jian Zhang, Dong-Yang Xing, Gui-Qi Wang, Department of Gastrointestinal Surgery, The First Hospital of Hebei Medical University, Shijiazhuang 050011, Hebei Province, China

Corresponding author: Gui-Qi Wang, MM, Chief Doctor, Department of Gastrointestinal Surgery, The First Hospital of Hebei Medical University, No. 89 Donggang Road, Shijiazhuang 050011, Hebei Province, China. doc_wangguiqi@163.com

Abstract

BACKGROUND

Colorectal cancer ranks third in global cancer prevalence and stands as the second leading cause of cancer-related mortalities. With obesity recognized as a pivotal risk factor for colorectal cancer, the potential protective role of bariatric surgery, especially laparoscopic Roux-en-Y gastric bypass and laparoscopic sleeve gastrectomy, has garnered attention.

AIM

To investigate the Roux-en-Y gastric bypass (RYGB) *vs* sleeve gastrectomy (SG) effect on colorectal cancer incidence in obese individuals.

METHODS

A systematic review and meta-analysis of the literature was conducted following the Preferred Reporting Items for Systematic Reviews and Meta-Analyses. Seventeen studies with a total of 12497322 patients were included. The primary outcome was the relative risk (RR) of developing colorectal cancer in obese patients who underwent weight loss surgery compared to those who did not. Secondary outcomes included determining the RR for colon and rectal cancer separately and subgroup analyses by gender and type of weight loss surgery.

RESULTS

The meta-analysis revealed a 54% reduction in colorectal cancer risk in morbidly obese patients who underwent bariatric surgery compared to those who did not. A significant 46% reduction in colorectal cancer risk was observed among female patients. However, no significant differences were found in the meta-analysis for various types of bariatric surgery, such as SG and RYGB.

CONCLUSION

This meta-analysis reveals weight loss surgery, regardless of type, reduces colorectal cancer risk, especially in women, as indicated by RR and hazard ratio

assessments. Further validation is essential.

Key Words: Obesity; Weight loss surgery; Colorectal cancer; Meta-analysis; Risk reduction

©The Author(s) 2023. Published by Baishideng Publishing Group Inc. All rights reserved.

Core Tip: This comprehensive meta-analysis evaluates the impact of bariatric surgery on colorectal cancer (CRC) risk using 17 studies with over 12 million patients. Results show a 54% reduction in CRC risk after surgery, with women experiencing a 46% decrease. Interestingly, the type of bariatric surgery, whether Sleeve Gastrectomy or Roux-en-Y Gastric Bypass, did not influence this risk reduction. Bariatric procedures underscore a pivotal role in managing CRC risk in the obese. The study highlights the surgery's protective effect, especially for women, and the need for further research on potential confounding factors.

Citation: Liu YN, Gu JF, Zhang J, Xing DY, Wang GQ. Bariatric surgery reduces colorectal cancer incidence in obese individuals: Systematic review and meta-analysis. *World J Gastrointest Surg* 2023; 15(10): 2331-2342

URL: <https://www.wjgnet.com/1948-9366/full/v15/i10/2331.htm>

DOI: <https://dx.doi.org/10.4240/wjgs.v15.i10.2331>

INTRODUCTION

Obesity is a multifaceted disease influenced by genetic, behavioral, socioeconomic, and environmental factors. These factors contribute to an elevated risk of morbidity and mortality from several debilitating conditions. Obesity increases the risk of a wide range of chronic diseases, from diabetes and dyslipidemia to mental health conditions. It has a significant impact on the risk of stroke, cardiovascular disease, certain cancers, and osteoarthritis. Worldwide, the rising prevalence of obesity presents substantial challenges to both chronic disease prevention and health promotion[1]. Given its global impact, the World Health Organization (WHO) defines obesity in Western populations as a body mass index (BMI) of ≥ 30 kg/m², while a BMI of ≥ 25 kg/m² is considered overweight. In the United States, 64.5% of adults are categorized as overweight and 30.5% as obese[2]. Data indicates that, relative to individuals with a normal BMI range (18.5-24.9 kg/m²), the mortality rate from various causes is markedly higher among the obese population, with cardiovascular diseases as the leading cause[3]. Although the overall BMI of Asian populations is lower than that of Western populations, Asians tend to exhibit central obesity. Thus, using a BMI ≥ 30 kg/m² as the threshold for diagnosing obesity in Asian populations may underestimate the risks associated with obesity, leading the WHO expert committee to define a BMI ≥ 25 kg/m² as the threshold for obesity in Asian populations[4]. Female obesity rates are generally higher than male rates, and there are gender differences in body fat distribution[5].

Previous reviews have indicated that, compared to individuals with normal weight, obesity increases the risk of developing colorectal cancer by 7% to 60%, with some studies suggesting a stronger association between obesity and colon cancer than rectal cancer[6]. According to research by Moghaddam *et al*[7], there is a direct and independent relationship between obesity and colorectal cancer. For every 2 kg/m² increase in BMI, the risk of colorectal cancer increases by 7%. A 2 cm increase in waist circumference is associated with a 4% increase in colorectal cancer risk. The association between obesity and colorectal cancer accounts for approximately 20% of the total risk. The risk for men is 1.41 (95%CI: 1.3-1.54), and for women, it is 1.08 (95%CI: 0.98-1.18) (P heterogeneity < 0.001). It is estimated that 6% of all cancer diagnoses in 2007 (4% for men and 7% for women) can be attributed to obesity. Obesity is not only a major risk factor for diabetes but also for most cancers. For a long time, it has been believed that obesity is associated with an increased risk of esophageal, colon, pancreatic, postmenopausal breast, endometrial, and kidney cancers[8].

Weight loss surgery can reduce the incidence of obesity-related tumors, particularly in female patients. An Australian study with over 65000 patients and a follow-up of up to 15 years found that the risk of colorectal cancer in male obese patients decreased by nearly 50% after weight loss surgery. Numerous clinical studies have confirmed that the reduction of insulin levels after weight loss surgery can reduce the risk of developing colorectal tumors[9].

Common weight loss surgeries include laparoscopic sleeve gastrectomy (LSG), Roux-en-Y laparoscopic gastric bypass (LRYGB), laparoscopic adjustable gastric banding, and other novel procedures. RYGB, originally proposed by Wittgrove *et al*[10], alters the digestive tracts pathway to reduce absorption and is a complex, high-risk procedure with numerous postoperative complications, involving the alteration of gastrointestinal anatomy. RYGB is more complex and has more complications than LSG, but for patients with type 2 diabetes mellitus unresponsive to medical treatment, RYGB is the preferred option. RYGB is also the gold standard for revision surgery in patients with postoperative weight regain or complications, such as high gastric leaks and severe reflux esophagitis. LRYGB is safe and effective in treating obesity and type 2 diabetes, and there is a correlation between BMI, blood glucose levels, and quality of life before and after surgery [11,12].

Due to its significant effects on weight loss and metabolic improvement, LSG has gained widespread application in the field of bariatric surgery. This surgical procedure is known for its simplicity, reduced surgical risks, and lower incidence of postoperative complications. LSG has remarkable weight loss and metabolic improvement effects.

The findings from these studies prompt an essential inquiry: Is the incidence of colorectal cancer lower in obese patients who undergo weight loss surgeries like LRYGB and LSG compared to those who opt against such procedures? Furthermore, do gender differences play a significant role in this issue, and are there any differences when choosing between RYGB and sleeve gastrectomy (SG) procedures? This meta-analysis seeks to discern the influence of weight loss surgeries on the colorectal cancer risk among obese individuals. Earlier meta-analytic studies have documented a decreased cancer risk following weight loss surgery. However, those studies encompassed research with considerable variances in follow-up durations and lacked specific analyses to address this bias. Therefore, our research objective is to conduct a new meta-analysis to elucidate the specific impact of weight loss surgery on the risk of colorectal cancer in obese patients.

MATERIALS AND METHODS

We conducted a systematic review of the literature following the guidelines for the Preferred Reporting Items for Systematic Reviews and Meta-Analyses (PRISMA) and Assessing the Methodological Quality of Systematic Reviews (AMSTAR)[13] and Meta-analysis of Observational Studies in Epidemiology (MOOSE) recommendations. This study does not require ethical approval or informed consent, as all data were retrieved from published literature. The search, eligibility assessment, data extraction, and quality evaluation were independently performed by four researchers. Any disagreements were resolved through discussion, with consensus required among the four researchers.

Search strategy

We searched PubMed, Embase, Web of Science, and Cochrane Library up to April 30, 2023, without imposing any time restrictions. We specifically adapted vocabulary and syntax for each database. We used computerized searches of the PubMed database with the following keywords: Obesity, obesity and cancer, colorectal cancer, weight loss surgery, gastric bypass, and sleeve gastrectomy. We did not impose any language restrictions. We also manually screened the reference lists of relevant articles to identify other potential records. In our search strategy, we included studies and previous reviews on the topic, screening their references according to the selection criteria to find more related studies.

Selection criteria

In adherence to PRISMA guidelines, we employed the Population, Intervention, Comparison, Outcome, and Study design framework to determine study eligibility: Population (P): Adult individuals (≥ 18 years old) diagnosed with morbid obesity, followed up for at least three years to investigate the incidence of colorectal cancer. Intervention (I): Weight loss surgery. Comparison (C): Simple observation or any behavioral or pharmacological treatment. Outcome (O): Risk of developing colorectal cancer during the follow-up period. Study design (S): Retrospective and prospective comparative studies with at least ten patients in each group.

Exclusion criteria

Studies were excluded if they did not involve a comparison of colorectal cancer risk between obese patients who underwent or did not undergo weight loss surgery, did not provide specific indicators or metrics for evaluating colorectal cancer risk, the full text was not accessible, or the study was not in English.

Systematic review process

In the first step, 1399 articles were identified through literature searches. Duplicate entries found across different databases were removed using Mendeley reference software (Mendeley Ltd., London, United Kingdom). Then, the titles and abstracts of 713 records were screened using a filtering table created to guide study selection.

Quality assessment

We assessed the quality of the included studies using the Newcastle-Ottawa Scale (NOS)[14]. This scale consists of three domains: selection, comparability, and outcome/exposure, with a maximum score of 9 points. Two evaluators assessed the following nine NOS sections: Representativeness of the exposed cohort, selection of the non-exposed cohort (selection bias); ascertainment of exposure, demonstration of the outcome, comparability of cohorts (comparability bias); assessment of the outcome, sufficient follow-up time, adequacy of cohort follow-up (outcome bias). Scores of 0-3, 4-6, and 7-9 represent low, medium, and high study quality, respectively.

Data extraction and assessment of included studies

A computerized electronic spreadsheet (Microsoft Excel 2021; Microsoft Corporation, Redmond, Washington, United Kingdom) was used to collect information regarding study design and methods, participant demographics and baseline characteristics, obesity treatment details, colorectal cancer outbreak risk, and survival.

Primary and secondary endpoints

The primary outcome was expressed as the relative risk (RR) of developing colorectal cancer in obese patients who underwent weight loss surgery compared to those who did not. In the same subset, secondary outcomes included determining the RR for colon cancer and rectal cancer separately. Additionally, subgroup analyses were performed, considering the RR of colorectal cancer (CRC) for males and females separately, and depending on the type of weight loss

surgery performed (LSG *vs* RYGB). Finally, we determined the hazard ratio (HR) for developing colorectal cancer in obese individuals who underwent or did not undergo weight loss surgery.

Statistical analysis

We assessed study heterogeneity using chi-square statistics and quantified it with the I^2 statistic. An I^2 value of 0% suggests no observed heterogeneity, whereas an I^2 value greater than 50% points to significant heterogeneity, while an I^2 value > 50% indicates significant heterogeneity. We standardized the relative risk in each article and combined them using a random-effects model. We conducted sensitivity analyses to assess the robustness of our findings and to pinpoint any individual studies that might influence the overall effect size. This analysis involved sequentially removing each study from the meta-analysis and recalculating the overall effect size, checking whether the point estimate of the overall effect remained within the 95% confidence interval of the initial combined effect. Publication bias was examined using funnel plot symmetry and Egger's test in meta-analyses with ten or more eligible articles. If the funnel plot appeared asymmetrical, we evaluated if the assumption of unpublished negative studies, attributable to publication bias, had a significant impact on the effect estimate. In all statistical tests, two-sided P values < 0.05 were considered statistically significant. We used STATA version 17 (StataCorp, College Station, TX, United States) to analyze the data from randomized controlled trials that met our inclusion criteria.

RESULTS

As depicted in [Figure 1](#), our quantitative and qualitative analyses encompassed 17 studies[15-31]. A total of 12497322 patients were analyzed in the meta-analysis ([Table 1](#)).

Colorectal cancer

Preliminary results were sourced from 17 studies[15-31]. The risk of developing colorectal cancer during the follow-up period was reduced by 54% (RR: 0.46, 95%CI: 0.32-0.67, P < 0.01, I^2 = 97.8%) in morbidly obese patients who underwent bariatric surgery (BS) ([Figure 2](#)). Due to the high degree of heterogeneity, a sensitivity analysis was performed ([Figure 3](#)). Four studies[22,23,26,31] were identified as primarily responsible for this heterogeneity, but their exclusion did not consistently reduce the heterogeneity; the advantage remained prominent for obese individuals with a history of BS (RR: 0.57, 95%CI: 0.47-0.69, P = 0.0001, I^2 = 75%). Only three studies separately reported data on colon and rectal cancer[15,23,30]; for colon cancer, the meta-analysis showed a trend favoring BS patients, though not significant (RR: 0.75, 95%CI: 0.46-1.21, P = 0.2444, I^2 = 89%). Similarly, considering rectal cancer, there was no apparent trend in favor of BS patients (RR: 0.74, 95%CI: 0.4-1.39, P = 0.3523, I^2 = 87%).

Subgroup analysis

We identified five studies from the literature[16,19,21,23,30] that reported CRC incidence exclusively in males across both the BS and non-surgical groups. Meta-analysis showed a trend toward a reduced risk of CRC in males with a history of BS, although not significant (RR: 0.74, 95%CI: 0.43-1.28, P = 0.2798, I^2 = 96%). We found a significant reduction in CRC risk (46%) in females with a history of BS (RR: 0.54, 95%CI: 0.37-0.79, P = 0.0014, I^2 = 90%). We noted six studies[16,19,21,23,28,30] that detailed female-specific cancer incidence. Regarding the type of weight loss surgery, SG and RYGB were the most common. The meta-analysis of binary outcomes from 4 studies[16,19,27,31] showed no difference in CRC risk for patients with a history of SG or RYGB (RR: 1.02, 95%CI: 0.71-1.45, P = 0.8708, I^2 = 43%). Only three studies[16,27,31] reported data following laparoscopic adjustable gastric banding, and thus this technique was not included in the meta-analysis.

Meta-Analysis of HR

We focused on articles that reported HR estimates for CRC development in obese individuals, irrespective of their history of undergoing BS[16,17,23,26,27,29,30]. Although there was a trend favoring the BS group (HR: 0.88, 95%CI: 0.69-1.12, P = 0.2974, I^2 = 77%), the meta-analysis of HR did not find significant estimates favoring either the BS or non-surgical groups. However, after sensitivity analysis and exclusion of the study by Mackenzie *et al*[27], a significant reduction of 25% in HR was observed for obese patients with a history of BS (HR: 0.75, 95%CI: 0.68-0.82, P = 0.005, I^2 = 70.4%) ([Figure 4](#)).

Results of quality assessment

Using the NOS, we evaluated the methodological quality of each randomized controlled trial. Overall, 1 study scored 7 points, 15 studies scored 8 points, and 1 study scored 9 points. No studies were blinded, and there was no evidence of concealed allocation. No apparent funding bias was found in any of the studies. We found no studies with incomplete outcome data, premature stopping bias, or imbalances at baseline. The risks of bias and corresponding ratios are summarized in [Table 2](#).

Results of publication bias

The funnel plot constructed from the observed studies showed symmetry, and no significant publication bias was detected in the funnel plot ([Figure 5](#)).

Table 1 Detailed characteristics of the study included in the research

Ref.	Country	Bariatric surgery ¹		Control ²		Follow-up	Risk estimate (95%CI) ³
		Total	Events	Total	Events		
Adams <i>et al</i> [17], 2009	United States	6596	25 (0.004)	9442	52 (0.006)	12.3	HR: 0.7 (0.43-1.15)
Christou <i>et al</i> [20], 2008	Canada	1035	2 (0.002)	5746	35 (0.006)	5	RR: 0.32 (0.076-1.313)
McCawley <i>et al</i> [28], 2009	United States	1482	1 (0.0007)	3495	11 (0.003)	-	
Derogar <i>et al</i> [21], 2013	Sweden	15095	70 (0.005)	62016	373 (0.006)	10	
Aravani <i>et al</i> [19], 2018	United States	39747	43 (0.001)	962860	3237 (0.003)	3	
Mackenzie <i>et al</i> [27], 2018	Sweden/United States	8794	16 (0.002)	8794	35 (0.004)	4.6	HR: 2.19 (1.21-3.96) ^a
Khalid <i>et al</i> [24], 2022	United States	19272	66 (0.003)	9636	55 (0.006)	5	
Kwak <i>et al</i> [23], 2019	United States	2231	5 (0.002)	2231	6 (0.002)	7.8	
Schauer <i>et al</i> [29], 2019	United States	22198	105 (0.005)	66427	533 (0.008)	3.5	HR: 0.59 (0.36-0.97) ^a
Tao <i>et al</i> [15], 2020	Denmark/Sweden/Norway/Finland/Iceland	49931	155 (0.003)	492427	3158 (0.006)	3.1	
Bailly <i>et al</i> [16], 2020	France	74131	423 (0.006)	971217	12629 (0.013)	5.7	HR: 0.68 (0.6-0.77) ^a
Tsui <i>et al</i> [31], 2020	United States	71000	340 (0.005)	323197	1334 (0.004)	-	
Taube <i>et al</i> [30], 2021	Sweden	2006	58 (0.03)	2038	67 (0.03)	22.2	HR: 0.89 (0.62-1.28)
Aminian <i>et al</i> [18], 2022	United States	5053	16 (0.003)	25265	86 (0.003)	6.1	
Desai <i>et al</i> [22], 2022	United States	279145	19 (0.0001)	7398104	32276 (0.004)	-	
Hussan <i>et al</i> [23], 2022	United States	88630	88 (0.001)	327734	325 (0.001)	3	HR: 1.02 (0.76-1.37)
Lazzati <i>et al</i> [26], 2022	France	288604	329 (0.0001)	851743	4434 (0.005)	5.7	HR: 0.93 (0.79-1.08)

¹The crude incidence rate data depicts the occurrence of colorectal cancer over the follow-up duration, denoted as *n* (%).

²Risk estimation evaluates the likelihood of colorectal cancer onset in obese individuals undergoing bariatric surgery therapy relative to those without such intervention.

³HR: hazard ratio.

^a*P* < 0.05.

DISCUSSION

Colorectal cancer is the third most common cancer worldwide and the second leading cause of cancer-related deaths. By 2020, approximately 1.9 million new cases and around 935000 deaths were related to colorectal cancer[32]. Obesity is a well-established risk factor for colorectal cancer. For every 5 kg/m² increase in BMI, the risk of colorectal cancer due to obesity rises by 24% in men and 9% in women. Additionally, obesity is linked to a 47% heightened risk of colorectal adenoma, implying its potential role in the initial stages of colorectal cancer progression. Postoperative risk of CRC is anticipated to decrease following BS, a procedure recognized for its ability to reduce inflammatory markers, mitigate genomic damage, and enhance anti-tumor response[33]. With sustained weight loss and alleviation or improvement of obesity-related comorbidities, BS is considered the most effective method for treating morbid obesity and its associated medical issues.

In this study, we conducted a meta-analysis of 17 studies, encompassing 12497322 patients. Our findings highlight that morbidly obese patient who underwent BS experienced a 54% reduction in CRC risk throughout the follow-up duration. Due to high heterogeneity, a sensitivity analysis was performed. Although no significant differences were found in the subgroup analysis of colon and rectal cancers, a 46% reduction in CRC risk was observed among female patients. However, no significant differences were found in the meta-analysis for various types of bariatric surgery, such as SG and RYGB. Lastly, a meta-analysis of articles reporting HR estimates for colorectal cancer in obese patients showed a significant 25% reduction in HR for those with a history of BS after sensitivity analysis.

Table 2 The quality assessment according to Newcastle-Ottawa Scale of each cohort study

Ref.	Selection		Comparability		Outcome		Was follow-up long enough	Adequacy of follow up of cohorts	Total score
	Representativeness of the exposed cohort	Selection of the non-exposed cohort	Ascertainment of exposure	Demonstration that outcome	Comparability of cohorts	Assessment of outcome			
Christou <i>et al</i> [20], 2008		★	★	★	★★	★	★	★	8
Adams <i>et al</i> [17], 2009	★	★	★	★	★★	★	★	★	9
McCawley <i>et al</i> [28], 2009	★	★	★	★	★	★	★	★	8
Derogar <i>et al</i> [21], 2013	★	★	★	★	★	★	★	★	8
Aravani <i>et al</i> [19], 2018	★	★	★	★	★★	★		★	8
Mackenzie <i>et al</i> [27], 2018		★	★	★	★	★	★	★	7
Kwak <i>et al</i> [25], 2019	★	★	★	★★	★	★	★		8
Schauer <i>et al</i> [29], 2019	★	★	★	★	★	★	★	★	8
Bailly <i>et al</i> [16], 2020	★	★	★	★	★	★	★	★	8
Tao <i>et al</i> [15], 2020	★	★	★	★	★★	★		★	8
Tsui <i>et al</i> [31], 2020	★	★	★	★	★	★	★	★	8
Taube <i>et al</i> [30], 2021	★	★	★	★	★	★	★	★	8
Aminian <i>et al</i> [18], 2022	★	★	★	★	★★	★		★	8
Desai <i>et al</i> [22], 2022	★	★	★	★★	★	★	★		8
Hussan <i>et al</i> [23], 2022	★	★	★	★	★	★	★	★	8
Khalid <i>et al</i> [24], 2022		★	★	★	★★	★	★	★	8
Lazzati <i>et al</i> [26], 2022	★	★	★	★	★★	★		★	8

The results of this study demonstrate that bariatric surgery has a significant impact on reducing the risk of colorectal cancer in morbidly obese patients. This aligns with earlier research, underscoring the risk-mitigating effect of bariatric surgery on colorectal cancer in those with obesity. Regarding gender disparities, our study pinpointed a marked decrease in CRC risk in female patients' post-bariatric surgery, potentially stemming from the varying impacts of obesity on colorectal cancer risk between the sexes. Renehan *et al*[34] found that for every 5 kg/m² increase in BMI, the risk of obesity-related colorectal cancer increased by 24% in men and 9% in women. This suggests that female patients might derive greater benefits from bariatric surgery. Regarding the types of bariatric surgery, no significant differences were found between SG and RYGB in reducing the risk of colorectal cancer. This may suggest that both procedures have similar effects on reducing the risk of colorectal cancer in obese patients. In sum, our findings reinforce the beneficial role of bariatric surgery in curtailing the risk of colorectal cancer for morbidly obese individuals, particularly emphasizing its pronounced impact on females. This finding may help clinicians develop more personalized treatment strategies to reduce the risk of colorectal cancer in obese patients. Nonetheless, subsequent studies should delve deeper into the enduring effects of varied bariatric surgical methods and investigate other potential determinants.

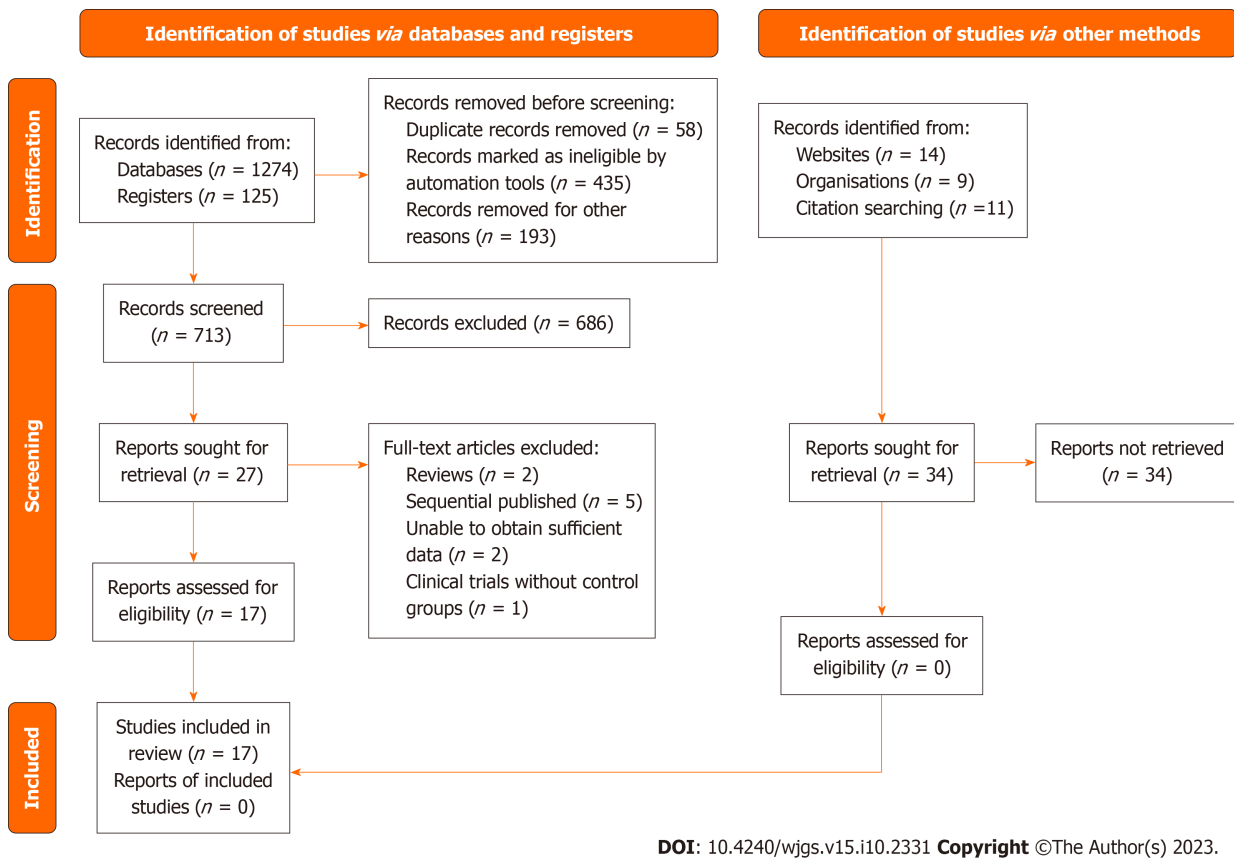


Figure 1 The PRISMA flowchart illustrates the comprehensive review process.

By elucidating the role of bariatric surgery in reducing the risk of colorectal cancer in morbidly obese patients, this study emphasizes the importance of proactive intervention for obese individuals. Firstly, this research reveals the positive impact of bariatric surgery on reducing the risk of colorectal cancer in obese patients, particularly among female patients. This robustly advocates for the formulation of tailored treatment strategies that cater to individual genders. Secondly, the study found that SG and RYGB have similar effects on reducing the risk of colorectal cancer. This finding helps clinicians make more informed decisions when selecting the most suitable bariatric surgery for obese patients.

Lastly, the results of this study hold significant implications for clinicians and patients. Grasping the influence of bariatric surgery on colorectal cancer risk enables doctors and patients to judiciously evaluate the risks and benefits during treatment planning, facilitating tailored medical interventions for obese patients. This study's findings are pivotal in deciphering risk management for obese patients prone to colorectal cancer, bolstering both the efficacy and personalization of clinical treatments. Subsequent studies should delve deeper into the enduring impacts of varied bariatric surgeries and explore other potential determinants affecting colorectal cancer risk among obese patients.

Data from Hussan *et al*[23] indicates that men have an increased risk of colorectal cancer following weight loss surgery compared to women. In female patients, the risk of CRC decreased following RYGB compared to the control group, but not following SG. Our study found a significant 46% reduction in colorectal cancer risk among female patients, but the incidence rate was not associated with either RYGB or SG weight loss surgery. Bustamante-Lopez *et al*[35] specifically analyzed the impact of bariatric surgery on early-onset colorectal neoplasia, concluding no significant impact of bariatric surgery on Early-Onset Colorectal Cancer risk. In contrast, our study provided a broader perspective, revealing a significant 54% reduction in colorectal cancer risk among morbidly obese patients undergoing bariatric surgery, especially highlighting a 46% risk reduction in females. Research highlighted in Pararas *et al*[36] suggests that type 2 diabetes is a component of metabolic syndrome in morbidly obese patients and is an independent prognostic factor associated with increased colorectal cancer risk. The varying degrees of metabolic improvement and alleviation of type 2 diabetes may be the underlying cause for the differences in colorectal cancer risk among different weight loss surgery types. SG outperformed RYGB in warding off colorectal cancer, suggesting that malabsorptive surgeries exert a gentler effect, which might lead to unfavorable alterations in the colonic and rectal microenvironments. Tao *et al*[15] suggests that alterations in the gut microbiota may play a key role in the initiation and progression of colorectal cancer. It is worth noting that the gut microbiota in RYGB patients shares similarities with that of cancer patients, but our study found no association between RYGB or SG weight loss surgery and the incidence rate.

Recently, Davey *et al*[37] unveiled evidence pointing to a diminished CRC risk following bariatric surgery among obese subjects. Our research aligns with these findings but further expands upon them. We drew from a comprehensive dataset sourced from 17 studies, involving a significant sample size of 12497322 patients. This expansive dataset furnishes a comprehensive perspective on the interplay between bariatric surgery and CRC. Unlike Davey *et al*[37], who solely employed odds ratios, our study incorporates both RR and HR metrics, enhancing the depth of our risk assessment.

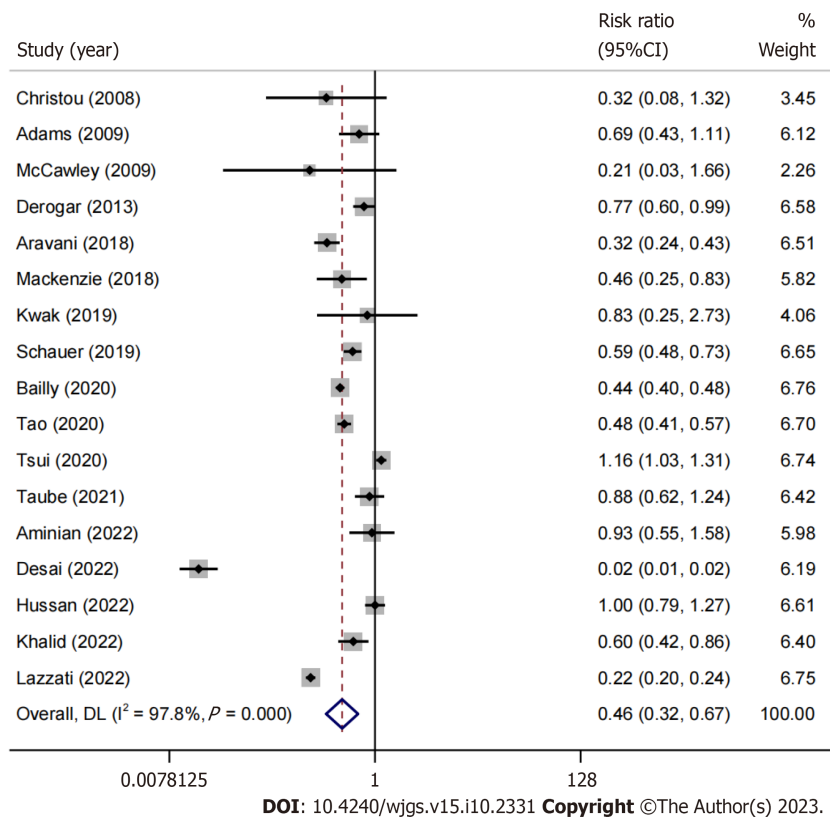


Figure 2 A forest plot contrasting the incidence of colorectal cancer in obese individuals who underwent or did not undergo bariatric surgery.

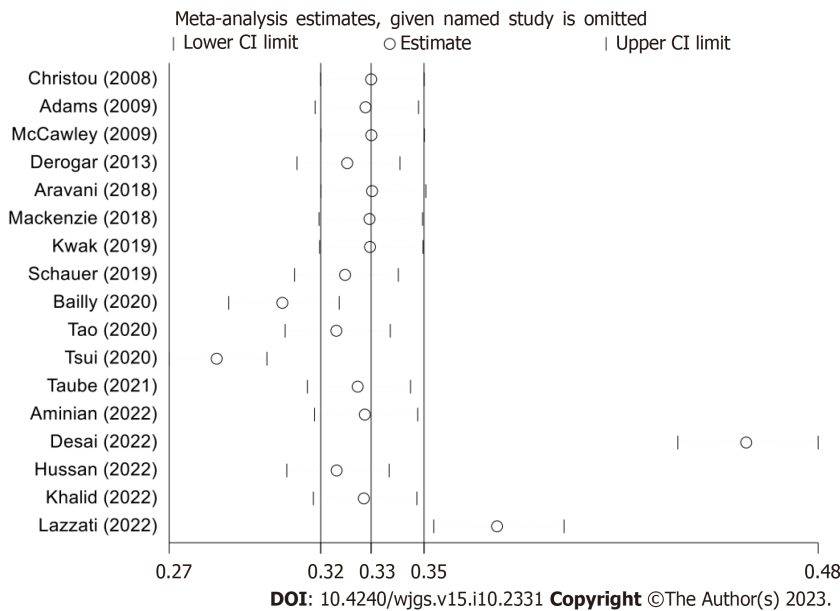


Figure 3 Meta-analysis Estimates (Omitting Named Study).

Additionally, where Davey *et al*[37] focused predominantly on RYGB and SG surgeries, we identified a generalized protective effect of diverse bariatric procedures against CRC. Importantly, our analysis indicates a 46% reduction in CRC risk among female patients, hinting at potential gender-specific mechanisms. Building on the foundational work of Wilson *et al*[38], we delved deeper into the intricacies of the CRC-obesity relationship and the protective role of bariatric interventions. We recognized a significant 46% decrease in CRC risk in females, an aspect less emphasized in previous literature. From a methodological standpoint, our adherence to PRISMA, AMSTAR, and MOOSE standards vouched for the accuracy and reproducibility of our study. In comparison to Pararas *et al*[36], our extensive sample provides further support for the protective association between bariatric surgery and CRC. Our study illuminates the 46% CRC risk

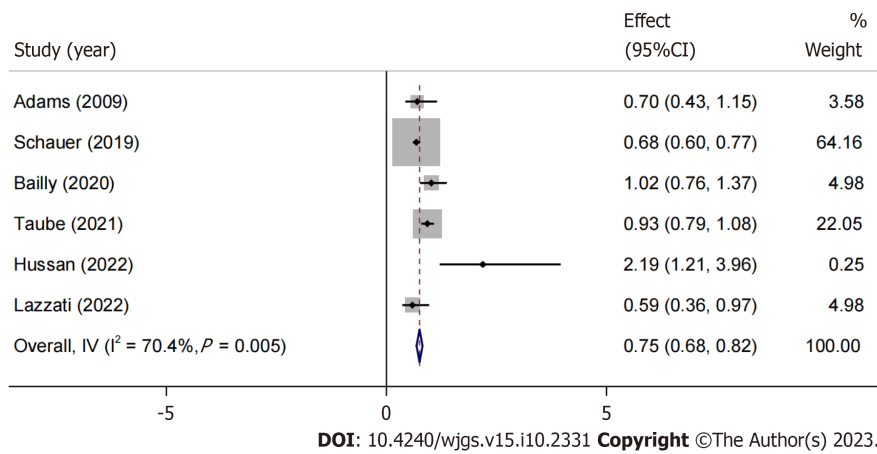


Figure 4 After sensitivity analysis, an hazard ratio meta-analysis forest plot is created.

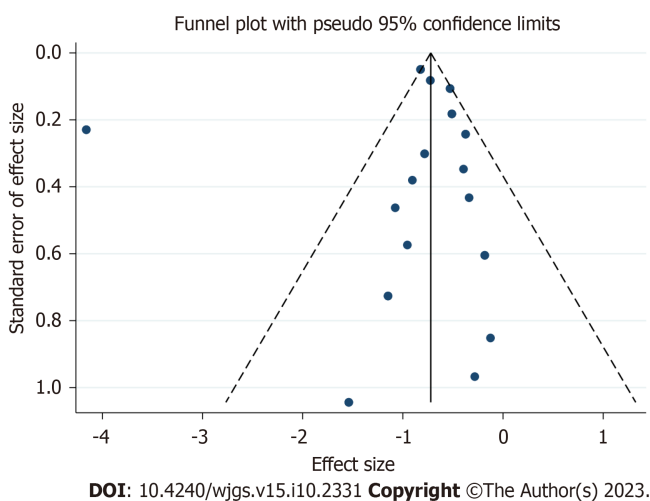


Figure 5 Funnel plot with pseudo 95% confidence limit.

reduction in females, a perspective not central to Pararas *et al*'s research[36]. Chierici *et al*'s contributions were foundational in our inquiry[39]. We shed light on the global prevalence of CRC in relation to obesity. Our conclusions, backed by our vast sample, distinguish between the risks associated with colon and rectal cancer and underscore the pronounced 46% risk reduction in female patients.

Research by heavy-c2 underscores obesity as a risk factor for colorectal cancer. While some investigations hint at an escalated risk of colorectal cancer post weight loss surgery, the link remains neither significant nor robust. Our study involved 1.2 million participants and employed a population-based cohort research method, studying morbidly obese patients who underwent weight loss surgery in Denmark, Finland, Iceland, Norway, and Sweden between 1980 and 2015. The outcomes failed to offer compelling evidence linking weight loss surgery to a notable increase in rectal cancer risk. This could be attributed to limited sample size, inconsistent data, among other potential reasons. Our findings show that the risk of colorectal cancer significantly decreased during the follow-up period for morbidly obese patients who underwent weight loss surgery. Notably, three of the studies in our analysis exhibited abbreviated follow-up durations. This insinuates a potential limitation in these studies regarding insights into the protracted risk of colorectal cancer. Nevertheless, they provide crucial data regarding immediate risks, which contribute substantially to the overall effect estimate. The aforementioned studies with shorter follow-up durations might introduce some degree of bias. This could slightly overestimate or underestimate the risk of colorectal cancer. However, our sensitivity analysis revealed that omitting these three studies did not result in a significant change in the overall effect size.

Treatments for obesity include lifestyle changes (nutrition education, behavioral counseling, physical exercise), medications, and weight loss surgery for severe obesity. Weight loss surgery is evidenced to markedly trim down enduring weight among severely obese individuals, simultaneously diminishing mortality rates. When studying the relationship between weight loss surgery and cancer incidence, it is challenging to separate the effects of surgery from the multiple associated changes. It is essential to consider that weight loss surgery is more commonly performed in younger individuals, while cancer is more frequently observed in older individuals[40]. Our investigation might not have sufficiently addressed the age distribution variances, potentially affecting our final conclusions. Our study may not have fully considered the time-varying analysis, meaning that the cancer risk in obese patients may change over time during

the follow-up period. Our chief focus was on gauging the impact of weight loss surgery on colorectal cancer risk, sidelining other treatment modalities like lifestyle alterations and medications. Such treatments could influence the colorectal cancer risk and warrant exploration in subsequent studies. Our investigation might not have comprehensively catered to every confounding element, including dietary habits, genetic factors, and environmental influences. These factors may also influence colorectal cancer risk and warrant more detailed consideration in future studies. Chronic inflammation stemming from a compromised barrier can disturb the balance between beneficial and deleterious bacteria in the GI tract, amplifying the likelihood of CRC and T2D onset. Surgery stands as a frontline treatment approach for both primary and metastatic colorectal cancer, whereas probiotics aren't recognized as a viable treatment alternative[41].

CONCLUSION

Weight loss surgery stands validated in its efficacy to curtail weight, mitigate obesity-associated complications, and lower cancer occurrence rates. This meta-analysis confirms the protective effect of weight loss surgery on colorectal cancer through the assessment of RR and HR, particularly in women. Moreover, this assessment was independent of the type of surgery performed. Further research is needed to confirm these findings.

ARTICLE HIGHLIGHTS

Research background

Obesity, with varying global definitions due to body fat disparities between Western and Asian populations, elevates colorectal cancer risk by 7% to 60%. Weight loss surgeries, especially Roux-en-Y laparoscopic gastric bypass (LRYGB) and laparoscopic sleeve gastrectomy (LSG), reduce this risk. Our meta-analysis addresses the varying post-surgery outcomes and research gaps from prior studies.

Research motivation

LRYGB and LSG surgeries exhibit potential impacts on colorectal cancer, but current studies show inconsistencies. Our research aims to bridge these gaps, informing clinical choices, shaping policies, and directing future investigations.

Research objectives

To quantitatively analyze the link between obesity and colorectal cancer, assess the impact of LRYGB and LSG surgeries, discern gender-specific risks, and refine methodological approaches in meta-analyses.

Research methods

We conducted a comprehensive search on PubMed, Embase, Web of Science, and Cochrane Library using terms including "obesity," "colorectal cancer," "gastric bypass," and "sleeve gastrectomy." We then assessed the retrieved articles based on the PRISMA-guided the Population, Intervention, Comparison, Outcome, and Study design framework: Population (adults with morbid obesity), Intervention (weight loss surgery), Comparison (observation or other treatments), Outcome (risk of colorectal cancer), and Study design (comparative studies with minimum ten patients/group).

Research results

Analyzing 17 studies with over 12 million patients, we found that bariatric surgery (BS) patients had a 54% reduced colorectal cancer risk. Subgroup insights showed a 46% risk reduction in females post-BS, while male trends were inconclusive. Specific surgical methods like sleeve gastrectomy and RYGB didn't show differential benefits. Rigorous hazard ratio and Newcastle-Ottawa Scale assessments validated our findings, with no detected publication bias. However, distinct outcomes for colon and rectal cancer remained unresolved.

Research conclusions

Bariatric surgery notably lowers colorectal cancer risk, especially in females, irrespective of the surgical type. Our expansive meta-analysis, adhering to rigorous standards, offers a nuanced insight into this relationship.

Research perspectives

Future studies should unravel the mechanisms behind bariatric surgery's protective effect, explore gut microbiota's role, compare surgery types, assess long-term impacts, and consider confounding factors.

FOOTNOTES

Author contributions: Liu YN and Gu JF contributed to the conception of the study; Zhang J and Liu YN contributed significantly to literature search, data extraction, quality assessment, data analyses and manuscript preparation; Xing DY contributed improving the article for language and style and protocol preparation; Gu JF helped perform the analysis with constructive discussions; Wang GQ

revised the manuscript and approved the final version.

Conflict-of-interest statement: The authors Ying-Ning Liu, Jing-Feng Gu, Jian Zhang, Dong-Yang Xing and Gui-Qi Wang all declare that there are no conflicts of interest related to this study.

PRISMA 2009 Checklist statement: The authors have read the PRISMA 2009 Checklist, and the manuscript was prepared and revised according to the PRISMA 2009 Checklist.

Open-Access: This article is an open-access article that was selected by an in-house editor and fully peer-reviewed by external reviewers. It is distributed in accordance with the Creative Commons Attribution NonCommercial (CC BY-NC 4.0) license, which permits others to distribute, remix, adapt, build upon this work non-commercially, and license their derivative works on different terms, provided the original work is properly cited and the use is non-commercial. See: <https://creativecommons.org/licenses/by-nc/4.0/>

Country/Territory of origin: China

ORCID number: Gui-Qi Wang 0009-0001-3296-3448.

S-Editor: Liu JH

L-Editor: A

P-Editor: Xu ZH

REFERENCES

- 1 Hruby A, Hu FB. The Epidemiology of Obesity: A Big Picture. *Pharmacoeconomics* 2015; **33**: 673-689 [PMID: 25471927 DOI: 10.1007/s40273-014-0243-x]
- 2 Lascano CA, Kaidar-Person O, Szomstein S, Rosenthal R, Wexner SD. Challenges of laparoscopic colectomy in the obese patient: a review. *Am J Surg* 2006; **192**: 357-365 [PMID: 16920431 DOI: 10.1016/j.amjsurg.2006.04.011]
- 3 Flegal KM, Graubard BI, Williamson DF, Gail MH. Cause-specific excess deaths associated with underweight, overweight, and obesity. *JAMA* 2007; **298**: 2028-2037 [PMID: 17986696 DOI: 10.1001/jama.298.17.2028]
- 4 WHO Expert Consultation. Appropriate body-mass index for Asian populations and its implications for policy and intervention strategies. *Lancet* 2004; **363**: 157-163 [PMID: 14726171 DOI: 10.1016/s0140-6736(03)15268-3]
- 5 Lovejoy JC, Sainsbury A; Stock Conference 2008 Working Group. Sex differences in obesity and the regulation of energy homeostasis. *Obes Rev* 2009; **10**: 154-167 [PMID: 19021872 DOI: 10.1111/j.1467-789X.2008.00529.x]
- 6 Larsson SC, Wolk A. Obesity and colon and rectal cancer risk: a meta-analysis of prospective studies. *Am J Clin Nutr* 2007; **86**: 556-565 [PMID: 17823417 DOI: 10.1093/ajcn/86.3.556]
- 7 Moghaddam AA, Woodward M, Huxley R. Obesity and risk of colorectal cancer: a meta-analysis of 31 studies with 70,000 events. *Cancer Epidemiol Biomarkers Prev* 2007; **16**: 2533-2547 [PMID: 18086756 DOI: 10.1158/1055-9965.EPI-07-0708]
- 8 Reeves GK, Pirie K, Beral V, Green J, Spencer E, Bull D; Million Women Study Collaboration. Cancer incidence and mortality in relation to body mass index in the Million Women Study: cohort study. *BMJ* 2007; **335**: 1134 [PMID: 17986716 DOI: 10.1136/bmj.39367.495995.AE]
- 9 Rapp K, Klenk J, Ulmer H, Concin H, Diem G, Oberaigner W, Schroeder J. Weight change and cancer risk in a cohort of more than 65,000 adults in Austria. *Ann Oncol* 2008; **19**: 641-648 [PMID: 18056917 DOI: 10.1093/annonc/mdm549]
- 10 Wittgrove AC, Clark GW, Tremblay LJ. Laparoscopic Gastric Bypass, Roux-en-Y: Preliminary Report of Five Cases. *Obes Surg* 1994; **4**: 353-357 [PMID: 10742801 DOI: 10.1381/096089294765558331]
- 11 Castagneto Gisse L, Casella Mariolo JR, Mingrone G. How to Choose the Best Metabolic Procedure? *Curr Atheroscler Rep* 2016; **18**: 43 [PMID: 27229936 DOI: 10.1007/s11883-016-0590-5]
- 12 Gómez-Huelgas R. [Bariatric surgery versus conventional medical therapy for type 2 diabetes]. *Rev Clin Esp* 2012; **212**: 461 [PMID: 23213657 DOI: 10.1016/j.rce.2012.05.020]
- 13 Page MJ, McKenzie JE, Bossuyt PM, Boutron I, Hoffmann TC, Mulrow CD, Shamseer L, Tetzlaff JM, Akl EA, Brennan SE, Chou R, Glanville J, Grimshaw JM, Hróbjartsson A, Lalu MM, Li T, Loder EW, Mayo-Wilson E, McDonald S, McGuinness LA, Stewart LA, Thomas J, Tricco AC, Welch VA, Whiting P, Moher D. The PRISMA 2020 statement: an updated guideline for reporting systematic reviews. *Syst Rev* 2021; **10**: 89 [PMID: 33781348 DOI: 10.1186/s13643-021-01626-4]
- 14 Sterne JA, Hernán MA, Reeves BC, Savović J, Berkman ND, Viswanathan M, Henry D, Altman DG, Ansari MT, Boutron I, Carpenter JR, Chan AW, Churchill R, Deeks JJ, Hróbjartsson A, Kirkham J, Jüni P, Loke YK, Pigott TD, Ramsay CR, Regidor D, Rothstein HR, Sandhu L, Santaguida PL, Schünemann HJ, Shea B, Shrier I, Tugwell P, Turner L, Valentine JC, Waddington H, Waters E, Wells GA, Whiting PF, Higgins JP. ROBINS-I: a tool for assessing risk of bias in non-randomised studies of interventions. *BMJ* 2016; **355**: i4919 [PMID: 27733354 DOI: 10.1136/bmj.i4919]
- 15 Tao W, Artama M, von Euler-Chelpin M, Hull M, Ljung R, Lyng E, Ólafsdóttir GH, Pukkala E, Romundstad P, Talbäck M, Tryggvadóttir L, Lagergren J. Colon and rectal cancer risk after bariatric surgery in a multicountry Nordic cohort study. *Int J Cancer* 2020; **147**: 728-735 [PMID: 31797382 DOI: 10.1002/ijc.32770]
- 16 Bailly L, Fabre R, Pradier C, Iannelli A. Colorectal Cancer Risk Following Bariatric Surgery in a Nationwide Study of French Individuals With Obesity. *JAMA Surg* 2020; **155**: 395-402 [PMID: 32159744 DOI: 10.1001/jamasurg.2020.0089]
- 17 Adams TD, Hunt SC. Cancer and obesity: effect of bariatric surgery. *World J Surg* 2009; **33**: 2028-2033 [PMID: 19672652 DOI: 10.1007/s00268-009-0169-1]
- 18 Aminian A, Wilson R, Al-Kurd A, Tu C, Milinovich A, Kroh M, Rosenthal RJ, Brethauer SA, Schauer PR, Kattan MW, Brown JC, Berger NA, Abraham J, Nissen SE. Association of Bariatric Surgery With Cancer Risk and Mortality in Adults With Obesity. *JAMA* 2022; **327**: 2423-2433 [PMID: 35657620 DOI: 10.1001/jama.2022.9009]

- 19 **Aravani A**, Downing A, Thomas JD, Lagergren J, Morris EJA, Hull MA. Obesity surgery and risk of colorectal and other obesity-related cancers: An English population-based cohort study. *Cancer Epidemiol* 2018; **53**: 99-104 [PMID: 29414638 DOI: 10.1016/j.canep.2018.01.002]
- 20 **Christou NV**, Lieberman M, Sampalis F, Sampalis JS. Bariatric surgery reduces cancer risk in morbidly obese patients. *Surg Obes Relat Dis* 2008; **4**: 691-695 [PMID: 19026373 DOI: 10.1016/j.soard.2008.08.025]
- 21 **Derogar M**, Hull MA, Kant P, Östlund M, Lu Y, Lagergren J. Increased risk of colorectal cancer after obesity surgery. *Ann Surg* 2013; **258**: 983-988 [PMID: 23470581 DOI: 10.1097/SLA.0b013e318288463a]
- 22 **Desai D**, Singhal S, Koka J. Evaluating the Correlation of Bariatric Surgery and the Prevalence of Cancers in Obese Patients: A Study of the National Inpatient Sample (NIS) Database. *Cureus* 2022; **14**: e23976 [PMID: 35547428 DOI: 10.7759/cureus.23976]
- 23 **Hussan H**, Akinyeye S, Mihaylova M, McLaughlin E, Chiang C, Clinton SK, Lieberman D. Colorectal Cancer Risk Is Impacted by Sex and Type of Surgery After Bariatric Surgery. *Obes Surg* 2022; **32**: 2880-2890 [PMID: 35731459 DOI: 10.1007/s11695-022-06155-0]
- 24 **Khalid SI**, Maasarani S, Wiegmann J, Wiegmann AL, Becerra AZ, Omotosho P, Torquati A. Association of Bariatric Surgery and Risk of Cancer in Patients With Morbid Obesity. *Ann Surg* 2022; **275**: 1-6 [PMID: 34183506 DOI: 10.1097/SLA.0000000000005035]
- 25 **Kwak M**, Mehaffey JH, Hawkins RB, Hedrick TL, Slingluff CL Jr, Schirmer B, Hallowell PT, Friel CM. Bariatric surgery is independently associated with a decrease in the development of colorectal lesions. *Surgery* 2019; **166**: 322-326 [PMID: 31097317 DOI: 10.1016/j.surg.2019.03.013]
- 26 **Lazzati A**, Epaul S, Ortala M, Katsahian S, Lanoy E. Effect of bariatric surgery on cancer risk: results from an emulated target trial using population-based data. *Br J Surg* 2022; **109**: 433-438 [PMID: 35136932 DOI: 10.1093/bjs/znac003]
- 27 **Mackenzie H**, Markar SR, Askari A, Faiz O, Hull M, Purkayastha S, Möller H, Lagergren J. Obesity surgery and risk of cancer. *Br J Surg* 2018; **105**: 1650-1657 [PMID: 30003539 DOI: 10.1002/bjs.10914]
- 28 **McCawley GM**, Ferriss JS, Geffel D, Northup CJ, Modesitt SC. Cancer in obese women: potential protective impact of bariatric surgery. *J Am Coll Surg* 2009; **208**: 1093-1098 [PMID: 19476897 DOI: 10.1016/j.jamcollsurg.2009.01.045]
- 29 **Schauer DP**, Feigelson HS, Koebnick C, Caan B, Weinmann S, Leonard AC, Powers JD, Yenumula PR, Arterburn DE. Bariatric Surgery and the Risk of Cancer in a Large Multisite Cohort. *Ann Surg* 2019; **269**: 95-101 [PMID: 28938270 DOI: 10.1097/SLA.0000000000002525]
- 30 **Taube M**, Peltonen M, Sjöholm K, Palmqvist R, Andersson-Assarsson JC, Jacobson P, Svensson PA, Carlsson LMS. Long-term incidence of colorectal cancer after bariatric surgery or usual care in the Swedish Obese Subjects study. *PLoS One* 2021; **16**: e0248550 [PMID: 33764991 DOI: 10.1371/journal.pone.0248550]
- 31 **Tsui ST**, Yang J, Zhang X, Docimo S Jr, Spaniolas K, Talamini MA, Sasson AR, Pryor AD. Development of cancer after bariatric surgery. *Surg Obes Relat Dis* 2020; **16**: 1586-1595 [PMID: 32737010 DOI: 10.1016/j.soard.2020.06.026]
- 32 **D'Amato S**, Sofia M, Agosta M, Litrico G, Sarvå I, La Greca G, Latteri S. The impact of bariatric surgery on colorectal cancer risk. *Surg Obes Relat Dis* 2023; **19**: 144-157 [PMID: 36446717 DOI: 10.1016/j.soard.2022.10.016]
- 33 **Afshar S**, Kelly SB, Seymour K, Lara J, Woodcock S, Mathers JC. The effects of bariatric surgery on colorectal cancer risk: systematic review and meta-analysis. *Obes Surg* 2014; **24**: 1793-1799 [PMID: 25015708 DOI: 10.1007/s11695-014-1359-y]
- 34 **Renahan AG**, Tyson M, Egger M, Heller RF, Zwahlen M. Body-mass index and incidence of cancer: a systematic review and meta-analysis of prospective observational studies. *Lancet* 2008; **371**: 569-578 [PMID: 18280327 DOI: 10.1016/S0140-6736(08)60269-X]
- 35 **Bustamante-Lopez L**, Sulbaran M, Changoor NR, Tilahun Y, Garcia-Henriquez N, Albert M, Soliman M, Monson JRT, Pepe J. Impact of bariatric surgery on early-onset colorectal cancer risk: a systematic review and meta-analysis. *Updates Surg* 2023; **75**: 1051-1057 [PMID: 37178403 DOI: 10.1007/s13304-023-01527-2]
- 36 **Pararas N**, Pikouli A, Dellaportas D, Nastos C, Charalampopoulos A, Muqresh MA, Bagias G, Pikoulis E, Papaconstantinou D. The Protective Effect of Bariatric Surgery on the Development of Colorectal Cancer: A Systematic Review and Meta-Analysis. *Int J Environ Res Public Health* 2023; **20** [PMID: 36900989 DOI: 10.3390/ijerph20053981]
- 37 **Davey MG**, Ryan OK, Ryan EJ, Donlon NE, Reynolds IS, Fearon NM, Martin ST, Heneghan HM. The Impact of Bariatric Surgery on the Incidence of Colorectal Cancer in Patients with Obesity-a Systematic Review and Meta-analysis of Registry Data. *Obes Surg* 2023; **33**: 2293-2302 [PMID: 37341934 DOI: 10.1007/s11695-023-06674-4]
- 38 **Wilson RB**, Lathigara D, Kaushal D. Systematic Review and Meta-Analysis of the Impact of Bariatric Surgery on Future Cancer Risk. *Int J Mol Sci* 2023; **24** [PMID: 37047163 DOI: 10.3390/ijms24076192]
- 39 **Chierici A**, Amoretti P, Draï C, De Fatico S, Barriere J, Schiavo L, Iannelli A. Does Bariatric Surgery Reduce the Risk of Colorectal Cancer in Individuals with Morbid Obesity? A Systematic Review and Meta-Analysis. *Nutrients* 2023; **15** [PMID: 36678338 DOI: 10.3390/nu15020467]
- 40 **Casagrande DS**, Rosa DD, Umpierre D, Sarmento RA, Rodrigues CG, Schaan BD. Incidence of cancer following bariatric surgery: systematic review and meta-analysis. *Obes Surg* 2014; **24**: 1499-1509 [PMID: 24817500 DOI: 10.1007/s11695-014-1276-0]
- 41 **Benioudakis E**, Karlafti E, Bekiaridou A, Didangelos T, Papavramidis TS. Gestational Diabetes, Colorectal Cancer, Bariatric Surgery, and Weight Loss among Diabetes Mellitus Patients: A Mini Review of the Interplay of Multispecies Probiotics. *Nutrients* 2021; **14** [PMID: 35011065 DOI: 10.3390/nu14010192]



Published by **Baishideng Publishing Group Inc**
7041 Koll Center Parkway, Suite 160, Pleasanton, CA 94566, USA

Telephone: +1-925-3991568

E-mail: bpgoffice@wjgnet.com

Help Desk: <https://www.f6publishing.com/helpdesk>

<https://www.wjgnet.com>

