

World Journal of *Clinical Cases*

World J Clin Cases 2023 December 6; 11(34): 8094-8241



Contents

Thrice Monthly Volume 11 Number 34 December 6, 2023

EDITORIAL

- 8094** Advances and future directions in keloid research: Pathogenesis, diagnosis and personalized treatment strategies

Zhao SY, Wu D, Cheng C, Xie JH

OPINION REVIEW

- 8099** Mental health implications of suicide rates in South Africa

Edeh NC, Eseadi C

- 8106** Artificial intelligence in sleep medicine: Present and future

Verma RK, Dhillon G, Grewal H, Prasad V, Munjal RS, Sharma P, Buddhavarapu V, Devadoss R, Kashyap R, Surani S

REVIEW

- 8111** Research progress on the relationship between Paneth cells-susceptibility genes, intestinal microecology and inflammatory bowel disease

Zhou QM, Zheng L

ORIGINAL ARTICLE

Case Control Study

- 8126** Case-control analysis of venous thromboembolism risk in non-alcoholic steatohepatitis diagnosed by transient elastography

Suresh MG, Gogtay M, Singh Y, Yadukumar L, Mishra AK, Abraham GM

Retrospective Study

- 8139** Efficacy and safety of tenofovir alafenamide in patients with chronic hepatitis B exhibiting suboptimal response to entecavir

Yuan GC, Chen AZ, Wang WX, Yi XL, Tu L, Peng F, Qiu ZH

Prospective Study

- 8147** Arthroscopic findings after manipulation under anesthesia in idiopathic capsulitis of the shoulder: A prospective study

Malv SK, Mittal R, Chauhan N

CASE REPORT

- 8153** Intra-arterial lipo-prostaglandin E1 infusion for arterial spasm in liver transplantation: A case report

Kim M, Lee HW, Yoon CJ, Lee B, Jo Y, Cho JY, Yoon YS, Lee JS, Han HS

- 8158** Pulmonary fungal infection in a neonate with methylmalonic acidemia: A case report

Gao CF, Wang D, Zeng LK, Tao XW

- 8164** Adult localized Langerhans cell histiocytosis: A case report
Yang PP, Hu SY, Chai XY, Shi XM, Liu LX, Li LE
- 8170** Venous adventitial cystic disease is a very rare disease that can cause deep vein thrombosis: A case report
Bae M, Huh U, Lee CW, Kim JW
- 8176** Rare case of lupus enteritis presenting as colorectum involvement: A case report and review of literature
Gan H, Wang F, Gan Y, Wen L
- 8184** Repeated atrial arrhythmia induced by cochineal red poisoning: A case report
Yang H, Wang YJ, Xu BP, Peng HW, Xu Q, Yu HB
- 8192** Anti-glial fibrillary acidic protein antibody and anti-aquaporin-4 antibody double-positive neuromyelitis optica spectrum disorder: A case report
Jin TY, Lin BT, Dai LJ, Lu X, Gao H, Hu J
- 8200** Thoracic duct cannulation during left internal jugular vein cannulation: A case report
Hwang GH, Eom W
- 8205** Long-term survival of the Sister Mary Joseph nodule originating from breast cancer: A case report
Kanayama K, Tanioka M, Hattori Y, Iida T, Okazaki M
- 8212** Hemophagocytic lymphohistiocytosis with jaundice as first manifestation: A case report
Wang DD, Wu S, Kong BB, Song LL
- 8219** Comprehensive treatment of deep frostbite of multiple fingers after trauma: A case report
Wang XH, Li M, Cheng Y, Wang GJ, Lin GL, Liu WN
- 8228** Bilateral snapping triceps syndrome: A case report
Cho CH, Lim KH, Kim DH
- 8235** Management of post-liver transplantation biliary stricture inaccessible by endoscopic retrograde cholangiopancreatography: A case report
Lee Y, Park CH, Cho E, Kim KH

ABOUT COVER

Editorial Board Member of *World Journal of Clinical Cases*, Dong-Ling Dai, MBBS, PhD, Chief Doctor, Professor, Department of Endoscopy Center and Gastroenterology, Shenzhen Children's Hospital, Shenzhen 518036, Guangdong Province, China. daidong3529@sina.com

AIMS AND SCOPE

The primary aim of *World Journal of Clinical Cases* (WJCC, *World J Clin Cases*) is to provide scholars and readers from various fields of clinical medicine with a platform to publish high-quality clinical research articles and communicate their research findings online.

WJCC mainly publishes articles reporting research results and findings obtained in the field of clinical medicine and covering a wide range of topics, including case control studies, retrospective cohort studies, retrospective studies, clinical trials studies, observational studies, prospective studies, randomized controlled trials, randomized clinical trials, systematic reviews, meta-analysis, and case reports.

INDEXING/ABSTRACTING

The WJCC is now abstracted and indexed in Science Citation Index Expanded (SCIE, also known as SciSearch®), Journal Citation Reports/Science Edition, Current Contents®/Clinical Medicine, PubMed, PubMed Central, Reference Citation Analysis, China Science and Technology Journal Database, and Superstar Journals Database. The 2023 Edition of Journal Citation Reports® cites the 2022 impact factor (IF) for WJCC as 1.1; IF without journal self cites: 1.1; 5-year IF: 1.3; Journal Citation Indicator: 0.26; Ranking: 133 among 167 journals in medicine, general and internal; and Quartile category: Q4.

RESPONSIBLE EDITORS FOR THIS ISSUE

Production Editor: Si Zhao; Production Department Director: Xu Guo; Editorial Office Director: Jin-Lei Wang.

NAME OF JOURNAL

World Journal of Clinical Cases

ISSN

ISSN 2307-8960 (online)

LAUNCH DATE

April 16, 2013

FREQUENCY

Thrice Monthly

EDITORS-IN-CHIEF

Bao-Gan Peng, Salim Surani, Jerzy Tadeusz Chudek, George Kontogeorgos, Maurizio Serati

EDITORIAL BOARD MEMBERS

<https://www.wjgnet.com/2307-8960/editorialboard.htm>

PUBLICATION DATE

December 6, 2023

COPYRIGHT

© 2023 Baishideng Publishing Group Inc

INSTRUCTIONS TO AUTHORS

<https://www.wjgnet.com/bpg/gerinfo/204>

GUIDELINES FOR ETHICS DOCUMENTS

<https://www.wjgnet.com/bpg/GerInfo/287>

GUIDELINES FOR NON-NATIVE SPEAKERS OF ENGLISH

<https://www.wjgnet.com/bpg/gerinfo/240>

PUBLICATION ETHICS

<https://www.wjgnet.com/bpg/GerInfo/288>

PUBLICATION MISCONDUCT

<https://www.wjgnet.com/bpg/gerinfo/208>

ARTICLE PROCESSING CHARGE

<https://www.wjgnet.com/bpg/gerinfo/242>

STEPS FOR SUBMITTING MANUSCRIPTS

<https://www.wjgnet.com/bpg/GerInfo/239>

ONLINE SUBMISSION

<https://www.f6publishing.com>



Adult localized Langerhans cell histiocytosis: A case report

Pan-Pan Yang, Su-Ye Hu, Xu-Ya Chai, Xiao-Meng Shi, Li-Xia Liu, Ling-E Li

Specialty type: Medicine, research and experimental

Provenance and peer review: Unsolicited article; Externally peer reviewed.

Peer-review model: Single blind

Peer-review report's scientific quality classification

Grade A (Excellent): 0
Grade B (Very good): 0
Grade C (Good): C
Grade D (Fair): 0
Grade E (Poor): 0

P-Reviewer: Exbrayat JM, France

Received: September 1, 2023

Peer-review started: September 1, 2023

First decision: October 17, 2023

Revised: October 30, 2023

Accepted: November 27, 2023

Article in press: November 27, 2023

Published online: December 6, 2023



Pan-Pan Yang, Su-Ye Hu, Xu-Ya Chai, Xiao-Meng Shi, Ling-E Li, Department of Dermatology, Shijiazhuang TCM Hospital, Shijiazhuang 050051, Hebei Province, China

Li-Xia Liu, Department of Pathology, Shijiazhuang TCM Hospital, Shijiazhuang 050051, Hebei Province, China

Corresponding author: Ling-E Li, BSc, Chief Physician, Department of Dermatology, Shijiazhuang TCM Hospital, No. 233 Zhongshan West Road, Qiaoxi District, Shijiazhuang 050051, Hebei Province, China. zyypfk2008@126.com

Abstract

BACKGROUND

Langerhans cell histiocytosis (LCH) is a rare clonal proliferative disease of Langerhans cells with unknown pathogenesis. An increasing number of clinicians recognize that LCH has a wide clinical spectrum and a highly varied course. Adults rarely develop LCH. Here, we report a case of adult localized LCH.

CASE SUMMARY

A 32-year-old woman presented with plaques and ulcers on the vulva and crissum, accompanied by pain that persisted for more than one year. Physical examination revealed a red-infiltrating plaque with ulcerations and exudates in the vulva and crissum. Pathological examination revealed a diffuse infiltration of lymphocytes, eosinophilic granulocytes, and histiocytoid cells in the superficial dermis. Proliferative histiocytoid cells showed mild atypia, partly with kidney-shaped nuclei. Immunohistochemical examination showed that the histiocytoid cells were positive for S100 protein and CD1 and weakly positive for CD68 (20% +), with a Ki-67 index of 30%. Laboratory tests did not reveal any other systemic damage. The patient was diagnosed with adult localized LCH and was prescribed oral prednisone (20 mg) once daily. The skin lesions gradually improved and are still being followed-up.

CONCLUSION

Adult localized LCH is rare and must be differentiated from other common conditions.

Key Words: Langerhans cell histiocytosis; Adult; Vulva; Crissum; S100; Case report

©The Author(s) 2023. Published by Baishideng Publishing Group Inc. All rights reserved.

Core Tip: Langerhans cell histiocytosis (LCH) is a rare clonal proliferative disease of Langerhans cells that express an immunophenotype positive for S100 protein, CD1 (CD1a), and Langerin (CD207) and contain cytoplasmic Birbeck granules. Adult localized LCH presenting with plaques and ulcers on the vulva and crissum is rare and must be differentiated from other common conditions.

Citation: Yang PP, Hu SY, Chai XY, Shi XM, Liu LX, Li LE. Adult localized Langerhans cell histiocytosis: A case report. *World J Clin Cases* 2023; 11(34): 8164-8169

URL: <https://www.wjgnet.com/2307-8960/full/v11/i34/8164.htm>

DOI: <https://dx.doi.org/10.12998/wjcc.v11.i34.8164>

INTRODUCTION

Langerhans cell histiocytosis (LCH) is a disease characterized by the proliferation of Langerhans cells that express an immunophenotype positive for S100 protein, CD1 (CD1a), and Langerin (CD207) and contain cytoplasmic Birbeck granules[1]. Several organs are involved in this process. The childhood and adult forms of LCH should be considered separately. Two-thirds or more children under one year of age and those aging 1–4 years have multi-system diseases, including those of the liver, lungs, or bone marrow. In adults, the peak age of presentation is between 20 years and 35 years, with multi-system diseases occurring in one-third to two-thirds of adults with LCH. The bones are the most commonly involved organs. Skin and mucosal involvement are the second most common manifestations in adults[2]. Here, we report a case of adult LCH that presented solely with skin involvement, without systemic damage.

CASE PRESENTATION

Chief complaints

A 32-year-old woman presented with plaques and ulcers on the vulva and crissum, accompanied by pain and exudates on the surface of the ulcers.

History of present illness

The patient reported a rash on the vulva as the first manifestation, which gradually enlarged and extended to the perianal area. She did not complain of diarrhea, constipation, melena, hematochezia, diabetes insipidus, changes in appetite, or weight loss.

History of past illness

The patient denied any previous chronic diseases, hepatitis, tuberculosis, and any history of infectious disease and close contact with infected people. She also denied drug and food allergies. Her vaccination history was unknown.

Personal and family history

The patient had no family history of cancer.

Physical examination

Physical examination revealed red erosive plaques and ulcers on the vulva and perianal areas, which were covered with exudates (Figure 1). No skull defects were observed.

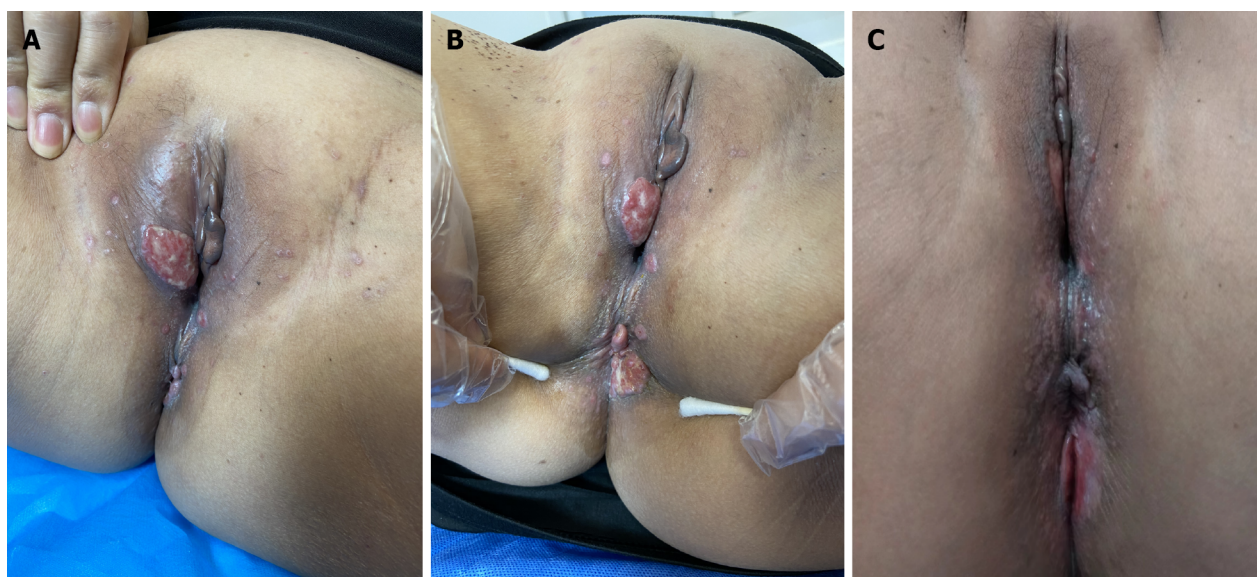
Laboratory examinations

A punch biopsy was performed at the intersection between the normal skin and vulvar rash during the initial visit. The tissue section was fixed in 10% neutral formalin, paraffin-embedded, sectioned, stained with hematoxylin and eosin, and subjected to direct immunohistochemistry before observation under light microscopy. Each immunohistochemistry test group included a negative self-control. All primary and secondary antibodies were purchased from ZSGB-BIO, Beijing, China. The primary antibody incubation lasted 50 min at 37 °C and 20 min at 37 °C for the secondary antibody. Visualization was performed using DAB (3,3'-diaminobiphenyl), and results were assessed by capturing images with a light microscope.

Pathology revealed histiocytoid cells in the superficial and middle dermal layers with mild nuclear atypia and a population of occasional eosinophils. The atypical histiocytoid cells were positive for S100 protein and CD1a, and weakly positive for CD68 (20% +), with a Ki-67 index of 30%. These cells were negative for creatine kinase (Figures 2 and 3).

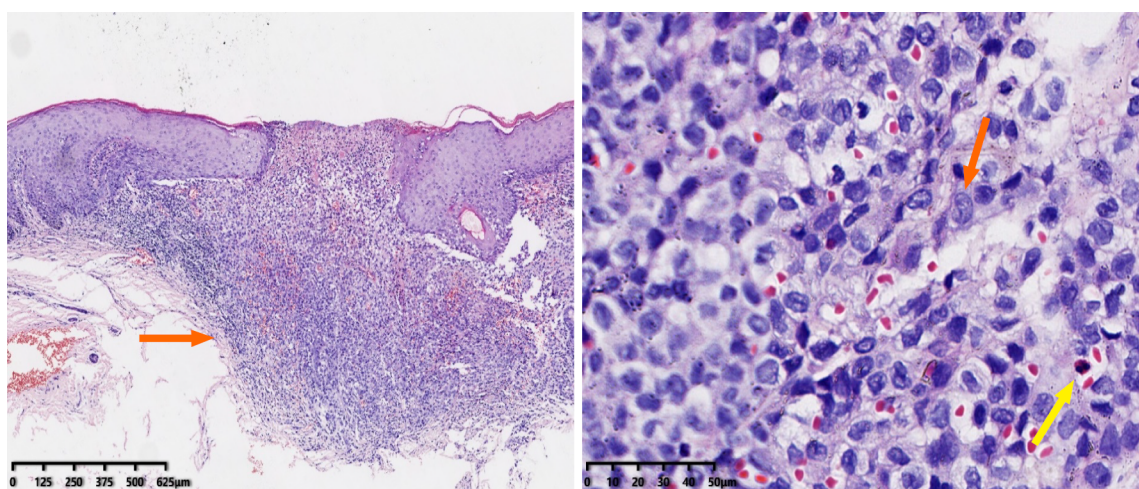
Imaging examinations

Computed tomography of the sacroiliac joint showed that the cortical bone of the sacral surface of the right sacroiliac joint was discontinuous.



DOI: 10.12998/wjcc.v11.i34.8164 Copyright ©The Author(s) 2023.

Figure 1 Clinical feature. A: Red erosive plaques and ulcers on the vulva; B: Red erosive plaques and ulcers on the perianal area; C: Lesions after 6 mo of oral prednisone 20 mg orally.



DOI: 10.12998/wjcc.v11.i34.8164 Copyright ©The Author(s) 2023.

Figure 2 Hematoxylin and eosin staining. A: The histiocytoid cells in the superficial and middle dermis layer with mild nuclear atypia, with occasional eosinophils; B: The histiocytoid cells in the superficial and middle dermis layer with mild nuclear atypia (orange arrow), with occasional eosinophils (yellow arrow).

FINAL DIAGNOSIS

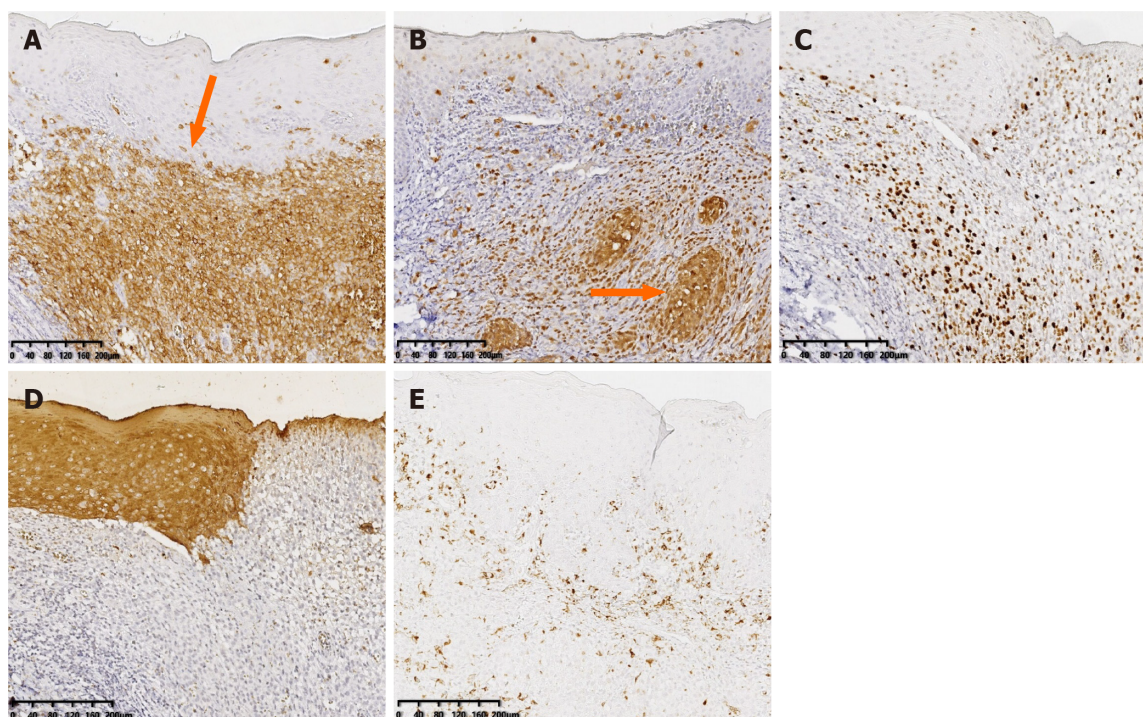
Based on these results, the patient was diagnosed with adult localized LCH.

TREATMENT

The patient was prescribed thalidomide 0.1 g orally twice daily and methotrexate 7.5 mg once weekly.

OUTCOME AND FOLLOW-UP

Three months later, the patient reported a poor response and was prescribed prednisone 20 mg orally once daily; the lesions gradually improved and the patient is still being followed up (Figure 1).



DOI: 10.12998/wjcc.v11.i34.8164 Copyright ©The Author(s) 2023.

Figure 3 Immunohistochemistry. A: CD1 (+++); B: S100 (+++); C: Ki-67 (30%); D: CK (-); E: CD68 (20%+).

DISCUSSION

LCH is a rare group of disorders in which mononuclear macrophages and dendritic cell systems proliferate, often affecting the skin and bones. It can also lead to multi-system diseases of the liver, spleen, lung, central nervous system, lymph nodes, thymus, gastrointestinal tract, and bone marrow[1-5]. Liver and spleen involvement causes abnormal liver function, hepatomegaly, and hypersplenism[6]. Involvement of the lungs may cause chest pain and dyspnea[7]. The pituitary gland may also be affected by LCH causing diabetes insipidus[8-10]. The bones of the skull are the most common sites affected by LCH, but other bones, such as the femur, scapula, rib, mandible, and vertebrae, can also be affected[11-13].

Depending on the number of systems involved in the patient, LCH is divided into single-system-LCH (SS-LCH) and multi-system-LCH (MS-LCH)[14]. SS-LCH is divided into SS-S (a single site involving the bone, skin, or lymph nodes) and SS-M (involving multiple parts of the bone or lymph nodes). Patients with SS-LCH have a good prognosis, whereas those with MS-LCH, especially those with liver and hematopoietic system involvement, have a poor prognosis and higher mortality rate[6,15]. Generally, patients with LCH in whom only the skin is affected have a good prognosis and about 50% of the patients can be in remission within a few months; however, disease progression and persistence are more common, and long-term follow-up is recommended[16].

The most common areas of skin involvement in LCH are the scalp, trunk, skin folds, and mucosa. Skin lesions vary and present as papules, blisters, pustules, purpura, plaques, or ulcers[2]. The most characteristic presentations of adult LCH are groin, perianal, and vulvar involvements. Chen *et al*[17] reported a case of adult LCH with an eczematoid lesion in the vulva as the initial manifestation, whereas Wu *et al*[18] reported a case of LCH with perianal skin lesions as the first presentation. In the present case, the skin lesions were located on both the vulvar and perianal regions. Computed tomography of the sacroiliac joint revealed discontinuity in the cortical bone of the right sacroiliac joint. Changes in the sacroiliac joint necessitated further follow-up and progressed slowly with no apparent systemic involvement. In conclusion, adult LCH is a rare disease that must be distinguished from other common diseases, including Paget's disease, candidiasis, and malignant melanoma.

Treatment of LCH should be individualized according to the number and severity of organs involved. Therapeutic options should also prevent long-term side effects of medication. Topical and systemic corticosteroids, nitrogen mustard, methotrexate, psoralen plus ultraviolet-A radiation, narrow-band ultraviolet-B radiation (or excimer laser), thalidomide, interferon, and azathioprine can be considered for treatment depending on the extent of skin lesions[2]. Therefore, surgical resection of a single lesion should be considered. No single treatment has been effective in all patients.

CONCLUSION

The rarity of LCH in adults may have resulted in its overlooked diagnosis. Therefore, dermatologists should consider this disease, along with its varied presentation and treatment options.

FOOTNOTES

Co-first authors: Pan-Pan Yang and Su-Ye Hu.

Author contributions: Chai XY and Yang PP performed laboratory testing and clinical data collection; Shi XM and Liu LX performed pathological studies; Yang PP and Hu SY drafted the manuscript; Hu SY and Li LE critically revised the manuscript for important intellectual content; all authors have read and approved the final version. Yang PP and Hu SY contributed equally to this work as co-first authors. The reasons for designating Yang PP and Hu SY as co-first authors are threefold. First, the research was performed as a collaborative effort, and the designation of co-first authorship accurately reflects the distribution of responsibilities and burdens associated with the time and effort required to complete the study and the resultant paper. This also ensures effective communication and management of post-submission matters, ultimately enhancing the paper's quality and reliability. Second, the overall research team encompassed authors with a variety of expertise and skills from different fields, and the designation of co-first authors best reflect this diversity. This also promotes the most comprehensive and in-depth examination of the research topic, ultimately enriching readers' understanding by offering various expert perspectives. Third, Yang PP and Hu SY contributed efforts of equal substance throughout the research process. The choice of these researchers as co-first authors acknowledges and respects this equal contribution, while recognizing the spirit of teamwork and collaboration of this study. In summary, we believe that designating Yang PP and Hu SY as co-first authors is fitting for our manuscript as it accurately reflects our team's collaborative spirit, equal contributions, and diversity.

Supported by Traditional Chinese Medicine Research Program of Hebei Provincial Administration of Traditional Chinese Medicine, No. 2022465.

Informed consent statement: Informed written consent was obtained from the patient for the publication of this case report.

Conflict-of-interest statement: The authors declare that they have no conflict of interest to disclose.

CARE Checklist (2016) statement: The authors have read the CARE Checklist (2016), and the manuscript was prepared and revised according to the CARE Checklist (2016).

Open-Access: This article is an open-access article that was selected by an in-house editor and fully peer-reviewed by external reviewers. It is distributed in accordance with the Creative Commons Attribution NonCommercial (CC BY-NC 4.0) license, which permits others to distribute, remix, adapt, build upon this work non-commercially, and license their derivative works on different terms, provided the original work is properly cited and the use is non-commercial. See: <https://creativecommons.org/licenses/by-nc/4.0/>

Country/Territory of origin: China

ORCID number: Su-Ye Hu 0009-0005-3252-1657; Ling-E Li 0009-0009-8707-3635.

S-Editor: Lin C

L-Editor: Wang TQ

P-Editor: Lin C

REFERENCES

- 1 **Bologna JL**, Jorizzo JL, Rapini RP, Schaffer JV. *Dermatology*. 4th ed. Philadelphia: Elsevier, 2017: 1614-1620
- 2 **James WD**, Elston D, Treat JR, Rosenbach MA. *Andrews' Diseases of the Skin: Clinical Dermatology*. 13th ed. Edinburgh: Elsevier, 2019: 726-729
- 3 **DiCaprio MR**, Roberts TT. Diagnosis and management of langerhans cell histiocytosis. *J Am Acad Orthop Surg* 2014; **22**: 643-652 [PMID: 25281259 DOI: 10.5435/JAAOS-22-10-643]
- 4 **Burns T**, Breathnach S, Cox N, Griffiths C. *Rook's Textbook of Dermatology*. 8th ed. Chichester: Blackwell Publishing Ltd, 2010
- 5 **Liu GQ**, Liu T, Shen C, Zhou L, Ouyang RY. Adult Langerhans cell histiocytosis involving lung, pituitary, thyroid, liver, lymph nodes, and skin: a case report. *Zhongnan Daxue Xuebao (Yixueban)* 2020; **45**: 96-101
- 6 **Ye YJ**, Chen W, Liu B, Wang L. Adult hepatic Langerhans cell histiocytosis: a case report. *Zhongguo Xiandai Yixue Zazhi* 2019; **29**: 125-126
- 7 **Tazi A**. Adult pulmonary Langerhans' cell histiocytosis. *Eur Respir J* 2006; **27**: 1272-1285 [PMID: 16772390 DOI: 10.1183/09031936.06.00024004]
- 8 **Choi JE**, Lee HR, Ohn JH, Moon MK, Park J, Lee SJ, Choi MG, Yoo HJ, Kim JH, Hong EG. Adult multisystem langerhans cell histiocytosis presenting with central diabetes insipidus successfully treated with chemotherapy. *Endocrinol Metab (Seoul)* 2014; **29**: 394-399 [PMID: 25309800 DOI: 10.3803/EnM.2014.29.3.394]
- 9 **Liu K**, Zeng M, Chen J, Hui Y, Kong Q, Duan Q, Sang H. Multisystem Langerhans cell histiocytosis with diabetes insipidus in an adult. *Indian J Dermatol* 2022; **67**: 184-186 [PMID: 36092185 DOI: 10.4103/ijd.ijd_741_21]
- 10 **Lourenço J**, Ferreira C, Marado D. Adult pulmonary Langerhans cell histiocytosis revealed by central diabetes insipidus: A case report and literature review. *Mol Clin Oncol* 2020; **13**: 30 [PMID: 32765877 DOI: 10.3892/mco.2020.2100]
- 11 **Angelini A**, Mavrogenis AF, Rimondi E, Rossi G, Ruggieri P. Current concepts for the diagnosis and management of eosinophilic granuloma of bone. *J Orthop Traumatol* 2017; **18**: 83-90 [PMID: 27770337 DOI: 10.1007/s10195-016-0434-7]
- 12 **Simko SJ**, Garnezy B, Abhyankar H, Lupo PJ, Chakraborty R, Lim KP, Shih A, Hicks MJ, Wright TS, Levy ML, McClain KL, Allen CE. Differentiating skin-limited and multisystem Langerhans cell histiocytosis. *J Pediatr* 2014; **165**: 990-996 [PMID: 25441388 DOI: 10.1016/j.jpeds.2014.07.063]
- 13 **Sapkas G**, Papadakis M. Vertebral Langerhans cell histiocytosis in an adult patient: case report and review of the literature. *Acta Orthop Belg*

- 2011; **77**: 260-264 [PMID: [21667741](#)]
- 14 **Hamdan M**, Qiao JC, Fikfak V. Adult-onset perianal Langerhans cell histiocytosis presenting as pruritus ani: a case report and review of the literature. *J Med Case Rep* 2021; **15**: 357 [PMID: [34289900](#) DOI: [10.1186/s13256-021-02924-0](#)]
 - 15 **Gao Z**, Yao X, Hu J. Bone marrow Langerhans cell histiocytosis: a case report. *Guangdong Yixue* 2017; **38**: 2597 [DOI: [10.13820/j.cnki.gdyx.2017.17.001](#)]
 - 16 **Barkaoui MA**, Queheille E, Aladjidi N, Plat G, Jeziorski E, Moshous D, Lambilliotte A, Kebaili K, Pacquement H, Leverger G, Mansuy L, Entz-Werlé N, Bodet D, Schneider P, Pagnier A, Lutun A, Gillibert-Yvert M, Millot F, Toutain F, Reguerre Y, Thomas C, Tazi A, Emile JF, Donadieu J, Héritier S. Long-term follow-up of children with risk organ-negative Langerhans cell histiocytosis after 2-chlorodeoxyadenosine treatment. *Br J Haematol* 2020; **191**: 825-834 [PMID: [32700439](#) DOI: [10.1111/bjh.16944](#)]
 - 17 **Chen Y**, Yu XH, Yang GL. Genital eczema-like lesions as the first manifestation of adult Langerhans cell histiocytosis. *Linchuang Pifuke Zazhi* 2018; **47**: 25-28 [DOI: [10.16761/j.cnki.1000-4963.2018.01.008](#)]
 - 18 **Wu HJ**, Yang S, Zhou CL, Wang S, Yang X, Xie JY, Zhang HY, Song C, Dong Q, Sun C, Li M. A case of Langerhans Cell Histiocytosis with perianal lesion as the first manifestation and literature review. *Zhongguo Pifuxingbingxue Zazhi* 2020; **34**: 1056-1058 [DOI: [10.13735/j.cjdv.1001-7089.201911064](#)]



Published by **Baishideng Publishing Group Inc**
7041 Koll Center Parkway, Suite 160, Pleasanton, CA 94566, USA

Telephone: +1-925-3991568

E-mail: bpgoffice@wjgnet.com

Help Desk: <https://www.f6publishing.com/helpdesk>

<https://www.wjgnet.com>

