

World Journal of *Psychiatry*

World J Psychiatry 2024 January 19; 14(1): 1-193



EDITORIAL

- 1 Unlocking the power of physical activity in easing psychological distress
Liu XQ, Wang X

MINIREVIEWS

- 8 Effects of psychological intervention on negative emotions and psychological resilience in breast cancer patients after radical mastectomy
Wang J, Kang DX, Zhang AJ, Li BR

ORIGINAL ARTICLE**Clinical and Translational Research**

- 15 Association between inflammatory bowel disease and all-cause dementia: A two-sample Mendelian randomization study
Liao OL, Xie SY, Ye J, Du Q, Lou GC

Retrospective Cohort Study

- 26 Effects of ulinastatin combined with dexmedetomidine on cognitive dysfunction and emergence agitation in elderly patients who underwent total hip arthroplasty
Huo QF, Zhu LJ, Guo JW, Jiang YA, Zhao J

Retrospective Study

- 36 Survey and clinical considerations of gender identity in lower primary school children
Zhang YL, Zhang HM, Xu JX, Zhou QY, Wang H, Pan XC
- 44 Improvement of the nutritional support management system for patients in intensive care units
Zhang YY, Wang CY, Guo DX, Gao HN, Jin XS, Wu YL, Chen LH, Feng ZX
- 53 Assessing myocardial indices and inflammatory factors to determine anxiety and depression severity in patients with chronic heart failure
Zhang L, Wang Q, Cui HS, Luo YY
- 63 Postpartum quality of life and mental health in women with heart disease: Integrated clinical communication and treatment
Liu JL, Wang Q, Qu DY
- 76 Clinicopathological features, psychological status, and prognosis of 33 patients with occult breast cancer
Wang HM, Yu AY, Li LL, Ma LY, Cao MH, Yang YL, Qin XB, Tang JJ, Han ZX

Observational Study

- 88 Des-Arg(9) bradykinin as a causal metabolite for autism spectrum disorder
Huang ZY, Lyu ZP, Li HG, You HZ, Yang XN, Cha CH
- 102 Performance of the walking trail making test in older adults with white matter hyperintensities
Zhao HY, Zhang ZQ, Huang YH, Li H, Wei FY
- 111 Embracing different languages and local differences: Co-constructive patient simulation strengthens host countries' clinical training in psychiatry
Çamlı ŞE, Yavuz BE, Gök MF, Yazgan I, Yazgan Y, Brand-Gothelf A, Gothelf D, Amsalem D, Martin A
- 119 Postpartum depression and partner support during the period of lactation: Correlation research and its influencing factors
Ruan JM, Wu LJ
- 128 Abnormalities of electroencephalography microstates in patients with depression and their association with cognitive function
Peng RJ, Fan Y, Li J, Zhu F, Tian Q, Zhang XB
- 141 Analysis of influencing factors of anxiety and depression in patients with periodontitis
Kong Y
- 148 Relationship between physical activity and specific working memory indicators of depressive symptoms in university students
Zhao Q, Wang X, Li SF, Wang P, Wang X, Xin X, Yin SW, Yin ZS, Mao LJ

Basic Study

- 159 Nutritional epigenetics education improves diet and attitude of parents of children with autism or attention deficit/hyperactivity disorder
Dufault RJ, Adler KM, Carpenter DO, Gilbert SG, Crider RA

META-ANALYSIS

- 179 Global epidemiology of mental disorder in atrial fibrillation between 1998-2021: A systematic review and meta-analysis
Zhang S, Zhang N, Liu L, Zheng W, Ma ZL, Qiao SY, Zhao YL, Wei YH, Wu G, Yu QT, Deng B, Shen L

ABOUT COVER

Editorial Board Member of *World Journal of Psychiatry*, Subho Chakrabarti, MD, FRCPsych, FAMS, Professor, Department of Psychiatry, Postgraduate Institute of Medical Education and Research, Chandigarh 16002, India. chakrabarti.subho@pgimer.edu.in

AIMS AND SCOPE

The primary aim of *World Journal of Psychiatry* (*WJP*, *World J Psychiatry*) is to provide scholars and readers from various fields of psychiatry with a platform to publish high-quality basic and clinical research articles and communicate their research findings online.

WJP mainly publishes articles reporting research results and findings obtained in the field of psychiatry and covering a wide range of topics including adolescent psychiatry, biological psychiatry, child psychiatry, community psychiatry, ethnopsychology, psychoanalysis, psychosomatic medicine, etc.

INDEXING/ABSTRACTING

The *WJP* is now abstracted and indexed in Science Citation Index Expanded (SCIE, also known as SciSearch®), Current Contents/Clinical Medicine, Journal Citation Reports/Science Edition, PubMed, PubMed Central, Reference Citation Analysis, China Science and Technology Journal Database, and Superstar Journals Database. The 2023 Edition of Journal Citation Reports® cites the 2022 impact factor (IF) for *WJP* as 3.1; IF without journal self cites: 2.9; 5-year IF: 4.2; Journal Citation Indicator: 0.52; Ranking: 91 among 155 journals in psychiatry; and Quartile category: Q3.

RESPONSIBLE EDITORS FOR THIS ISSUE

Production Editor: *Yu-Xi Chen*; Production Department Director: *Xu Guo*; Editorial Office Director: *Jia-Ping Yan*.

NAME OF JOURNAL

World Journal of Psychiatry

ISSN

ISSN 2220-3206 (online)

LAUNCH DATE

December 31, 2011

FREQUENCY

Monthly

EDITORS-IN-CHIEF

Ting-Shao Zhu

EDITORIAL BOARD MEMBERS

<https://www.wjgnet.com/2220-3206/editorialboard.htm>

PUBLICATION DATE

January 19, 2024

COPYRIGHT

© 2024 Baishideng Publishing Group Inc

INSTRUCTIONS TO AUTHORS

<https://www.wjgnet.com/bpg/gerinfo/204>

GUIDELINES FOR ETHICS DOCUMENTS

<https://www.wjgnet.com/bpg/GerInfo/287>

GUIDELINES FOR NON-NATIVE SPEAKERS OF ENGLISH

<https://www.wjgnet.com/bpg/gerinfo/240>

PUBLICATION ETHICS

<https://www.wjgnet.com/bpg/GerInfo/288>

PUBLICATION MISCONDUCT

<https://www.wjgnet.com/bpg/gerinfo/208>

ARTICLE PROCESSING CHARGE

<https://www.wjgnet.com/bpg/gerinfo/242>

STEPS FOR SUBMITTING MANUSCRIPTS

<https://www.wjgnet.com/bpg/GerInfo/239>

ONLINE SUBMISSION

<https://www.f6publishing.com>



Retrospective Study

Assessing myocardial indices and inflammatory factors to determine anxiety and depression severity in patients with chronic heart failure

Li Zhang, Qiang Wang, Hong-Sheng Cui, Yuan-Yuan Luo

Specialty type: Psychiatry

Provenance and peer review:

Unsolicited article; Externally peer reviewed.

Peer-review model: Single blind

Peer-review report's scientific quality classification

Grade A (Excellent): 0

Grade B (Very good): B

Grade C (Good): C

Grade D (Fair): 0

Grade E (Poor): 0

P-Reviewer: Muller DJ, Canada;
Pipe AL, Canada

Received: November 6, 2023

Peer-review started: November 6, 2023

First decision: November 16, 2023

Revised: November 25, 2023

Accepted: December 21, 2023

Article in press: December 21, 2023

Published online: January 19, 2024



Li Zhang, Qiang Wang, Hong-Sheng Cui, Department of Cardiology, Jingzhou Hospital, Yangtze University, Jingzhou 434020, Hubei Province, China

Yuan-Yuan Luo, Department of Intensive Care Unit, The First Affiliated Hospital of Guangzhou University of Chinese Medicine, Guangzhou 510000, Guangdong Province, China

Corresponding author: Yuan-Yuan Luo, MM, Associate Chief Physician, Department of Intensive Care Unit, The First Affiliated Hospital of Guangzhou University of Chinese Medicine, No. 16 Airport Road, Guangzhou 510000, Guangdong Province, China.

kellyyuan1983@163.com

Abstract

BACKGROUND

Patients with chronic heart failure (CHF) have a progressive disease that is associated with poor quality of life and high mortality. Many patients experience anxiety and depression (A&D) symptoms, which can further accelerate disease progression. We hypothesized that indicators of myocardial function and inflammatory stress may reflect the severity of A&D symptoms in patients with CHF. Changes in these biomarkers could potentially predict whether A&D symptoms will deteriorate further in these individuals.

AIM

To measure changes in cardiac and inflammatory markers in patients with CHF to determine A&D severity and predict outcomes.

METHODS

We retrospectively analyzed 233 patients with CHF treated at the Jingzhou Hospital, Yangtze University between 2018-2022 and grouped them according to Self-Rating Anxiety Scale (SAS) and Self-Rating Depression Scale (SDS) scores. We compared clinical data in the no-A&D, mild-A&D, moderate-A&D, and severe-A&D groups, the SAS and SDS scores with the New York Heart Association (NYHA) functional classification, and cardiac markers and inflammatory factors between the no/mild-A&D and moderate/severe-A&D groups. Regression analysis was performed on the markers with $P < 0.05$ to determine their ability to predict A&D severity in patients and the area under the receiver operating characteristic curve (AUROC) was used to evaluate their accuracy.

RESULTS

In the inter-group comparison, the following variables had an effect on A&D severity in patients with CHF: NYHA class, left ventricular ejection fraction (LVEF), left ventricular end-diastolic diameter, N-terminal pro-brain natriuretic peptide (NT-proBNP), interleukin-6 (IL-6), and tumor necrosis factor- α ($P < 0.05$). Other variables did not differ significantly between the A&D groups ($P > 0.05$). In addition, we found that higher NYHA classes were associated with higher the SAS and SDS scores ($P < 0.05$). Regression analysis showed that LVEF, NT-proBNP, and IL-6 were independent risk factors for A&D severity ($P < 0.05$). Among them, NT-proBNP had the best predictive ability as a single indicator (AUROC = 0.781). Furthermore, the combination of these three indicators exhibited a good predictive effect toward discriminating the extent of A&D severity among patients (AUROC = 0.875).

CONCLUSION

Cardiac and inflammatory biomarkers, such as LVEF, NT-proBNP, and IL-6, are correlated with A&D severity in patients with CHF and have predictive value.

Key Words: Chronic heart failure; Anxiety; Depression; Cardiac markers; Inflammatory factors; Prediction

©The Author(s) 2024. Published by Baishideng Publishing Group Inc. All rights reserved.

Core Tip: We investigated patients with chronic heart failure (CHF) with varying degrees of anxiety and depression (A&D) symptoms and assessed changes in myocardial markers and inflammatory factors to determine their associations with A&D severity. We used independent risk factors as predictive indicators and assessed their discriminative accuracy in predicting A&D severity using the area under the receiver operating characteristic curve. We demonstrated that A&D symptoms can affect the progression of CHF and lead to worse outcomes for patients.

Citation: Zhang L, Wang Q, Cui HS, Luo YY. Assessing myocardial indices and inflammatory factors to determine anxiety and depression severity in patients with chronic heart failure. *World J Psychiatry* 2024; 14(1): 53-62

URL: <https://www.wjgnet.com/2220-3206/full/v14/i1/53.htm>

DOI: <https://dx.doi.org/10.5498/wjp.v14.i1.53>

INTRODUCTION

Chronic heart failure (CHF), or congestive heart failure, is a progressive disease that commonly manifests as fatigue, reduced physical fitness, shortness of breath, persistent coughing, and arrhythmia. Typically, the New York Heart Association (NYHA) classification is used to evaluate patients according to the severity of their symptoms, alongside cardiovascular functional capacity and blood test results[1]. Currently, treatment aims to ease the impact of these symptoms on daily life activities of patients and improve the quality of life. However, studies have shown that > 50% of patients with CHF develop anxiety and depression (A&D) symptoms[2,3], which has been associated with unfavorable outcomes, such as increased CHF-related hospitalization and mortality rates. However, distinguishing whether certain symptoms are related to A&D or are symptoms of CHF remains a challenge. Therefore, if the A&D status of patients with CHF can be accurately diagnosed and treated, the overall condition and life expectancy of patients is expected to improve [4,5].

In China, the incidence of CHF is on the rise, especially left ventricular dysfunction[6]. Although there has been extensive research on the general demographic characteristics and A&D data of CHF patients, studies on myocardial markers and inflammation factor levels are still limited. Research by Wang *et al*[7] showed that in the CHF population, white blood cell interleukin-6 (IL-6) and tumor necrosis factor- α (TNF- α) are higher than those in the healthy population; Yasuhara *et al*[8] reported that these inflammation factor levels are positively correlated with B-type natriuretic peptide levels; Liu *et al*[9] showed in subsequent studies that systemic inflammation indicators, such as hypersensitive C-reactive protein (hs-CRP), are supplementary indicators for CHF diagnosis. Therefore, these inflammation factors can well reflect the physiological state of CHF patients. Furthermore, immune abnormalities of inflammatory mediators such as IL-6, TNF- α , *etc.*, may be related to the pathophysiology of depression, and are also potential markers for the classification of A&D states[10,11]. Therefore, these inflammation factors can reflect the physiological state of CHF patients, and also have the potential to classify A&D states in CHF.

Currently, the assessment of A&D relies on subjective patient-reported measures; hence, differential levels of myocardial markers and inflammatory factors could serve as objective measure to assist clinicians in assessing and classifying A&D severity. This measure could facilitate a more precise distinction between CHF patients with different degrees of A&D, enable physicians to better manage and rationally allocate medical resources, and provide the potential for personalized treatment.

Therefore, this retrospective study aimed to explore the differences in myocardial markers, inflammatory factors, and A&D severity in patients of CHF and potentially reveal an association that can be used as a reference for clinical assessment of A&D status in patients with CHF in the future.

MATERIALS AND METHODS

Patient characteristics

This retrospective study obtained data from patients with CHF treated at Jingzhou Hospital, Yangtze University, from January 2018 to December 2022. The inclusion criteria were as follows: (1) A confirmed diagnosis of CHF and relevant medical records; (2) Records of A&D symptoms; (3) Patients aged > 18 years; and (4) Information on inflammatory factors and myocardial markers. The exclusion criteria were as follows: (1) Severe cardiovascular disease, such as myocardial infarction or heart valve disease; (2) Severe comorbid systemic diseases, such as cancer or renal failure; (3) History of severe psychological disorders that affect cognition and mood, such as schizophrenia and bipolar disorder; (4) Recent treatments that impact inflammatory and myocardial markers, such as corticosteroid therapy; and (5) History of alcohol or substance abuse. All diagnoses were based on the left ventricular ejection fraction (LVEF) < 50% and N-terminal pro-Brain natriuretic peptide (NT-proBNP) \geq 125 ng/L one week after hospitalization. The Self-Rating Anxiety Scale (SAS) and Self-Rating Depression Scale (SDS) scales were used to assess A&D, respectively[4,5]. Overall, 233 eligible patients were included in this study. The study was approved by the Institutional Review Board of Jingzhou Hospital, Yangtze University (2023-053-01).

Group comparisons

The patients were first grouped according to the degree of A&D indicated by the SAS and SDS scores as follows: No-A&D (SAS < 50 and SDS < 53; $n = 65$); mild-A&D (SAS 50-59 and SDS 53-62, $n = 42$); moderate-A&D (SAS 60-69 and SDS 63-72, $n = 93$); and severe-A&D (SAS > 69 and SDS > 72, $n = 33$). If the two scores did not meet any of the group requirements simultaneously, the highest SAS or SDS score was used as the grouping criterion.

The demographic and clinical data of the patients in each group were compared to identify indicators of statistically significant differences in A&D. Then, the patients were divided into groups based on the NYHA classification (I, II, III, and IV) and the SAS and SDS scores were compared among the groups[1]. Finally, we determined the effect of A&D on the daily lives of patients based on SAS and SDS scores, with the no/mild-A&D (N/M) group considered not affected and the moderate/severe-A&D (M/S) group considered affected and required targeted intervention[12,13]. Hence, the patients from groups A and B and the patients from groups C and D were combined into the N/M and M/S groups, respectively. We compared the significant indicators between the two groups using regression analysis and evaluated their predictive value using the area under the receiver operating characteristic (AUROC) curve.

Observed indicators

The data included in the analysis were as follows: Sex, age, disease course, NYHA classification, myocardial indicators such as LVEF, left ventricular end-diastolic dimension (LVEDd), NT-proBNP, and soluble growth stimulation expressed gene 2 protein, and inflammatory factors such as IL-6, TNF- α , hs-CRP, and high sensitivity cardiac troponin.

Statistical analysis

All statistical analyses were conducted using SPSS software for Windows (version 26.0; IBM Corp., Armonk, NY, United States). Quantitative data are expressed as the mean \pm SD, while qualitative data are expressed as the number of cases (n) and proportions (%). For inter-group comparisons, t -tests, analysis of variance (ANOVA), or non-parametric tests were used depending on whether the quantitative data followed normal distribution and homogeneity of variances. χ^2 tests were used for inter-group comparisons of qualitative data. Logistic regression was used for multivariate analysis to calculate the odds ratios (OR) and 95% confidence intervals (CI). P values < 0.05 were considered statistically significant.

RESULTS

Clinical characteristics

In the inter-group analysis, differences in LVEDd ($P < 0.05$) and in NYHA class, LVEF, NT-proBNP, IL-6, and TNF- α ($P < 0.001$) were observed between the no-A&D and severe-A&D groups. No other variables exhibited differences between the two groups ($P > 0.05$) (Table 1). Since LVEF, NT-proBNP, IL-6, and TNF- α were quantitative variables with large inter-group differences, post hoc multiple comparisons were performed (Figure 1).

The LVEF and IL-6 levels in the no-A&D group were clearly different than those of the mild-A&D, moderate-A&D, and severe-A&D groups ($P < 0.01$), which all had similar levels ($P > 0.05$) (Figure 1A and D). LVEDd exhibited differences in the no-A&D and moderate-A&D/severe-A&D group comparisons ($P < 0.05$). However, when the moderate-A&D group was compared with the other groups, the differences were not significant ($P > 0.05$) (Figure 1B). The NT-proBNP levels showed no significant differences between no-A&D and mild-A&D groups or between the moderate and severe-A&D groups ($P > 0.05$). However, differences in NT-proBNP levels were observed and highlighted when the no-A&D and mild-A&D groups were compared with the moderate-A&D and severe-A&D groups ($P < 0.001$) (Figure 1C). Furthermore, significant differences in TNF- α levels were found between the no-A&D/mild-A&D and moderate-A&D/severe A&D groups ($P < 0.05$), the no-A&D and mild-A&D groups ($P < 0.05$) but not between the moderate-A&D and severe-A&D groups ($P > 0.05$) (Figure 1E).

The effect of NYHA on SAS and SDS scores

We found that the SAS and SDS scores of patients with CHF increased as the NYHA class improved ($P < 0.05$) (Table 2).

Table 1 Comparison of general patient data between the different anxiety and depression groups

| Observation indices | No-A&D (n = 65) | Mild-A&D (n = 42) | Moderate-A&D (n = 93) | Severe-A&D (n = 33) | P value |
|--------------------------------------|------------------|-------------------|-----------------------|---------------------|---------|
| Sex | | | | | 0.686 |
| Male | 27 (41.54) | 20 (47.61) | 47 (50.54) | 17 (51.52) | |
| Female | 38 (58.46) | 22 (52.39) | 46 (49.46) | 16 (48.48) | |
| Age (yr, mean ± SD) | 63.20 ± 14.75 | 64.93 ± 12.81 | 66.08 ± 10.99 | 66.67 ± 12.78 | 0.476 |
| Course of disease (month, mean ± SD) | 68.00 ± 17.74 | 66.36 ± 20.49 | 68.53 ± 15.97 | 68.97 ± 20.40 | 0.948 |
| NYHA, n (%) | | | | | < 0.001 |
| I | 16 (24.62) | 6 (14.29) | 3 (3.23) | 4 (12.12) | |
| II | 27 (41.54) | 8 (19.05) | 26 (27.96) | 8 (24.24) | |
| III | 21 (32.31) | 24 (57.14) | 54 (58.06) | 17 (51.52) | |
| IV | 1 (1.53) | 4 (9.52) | 10 (10.75) | 4 (12.12) | |
| LVEF (% , mean ± SD) | 38.72 ± 3.32 | 37.08 ± 3.03 | 36.24 ± 2.59 | 36.32 ± 3.16 | < 0.001 |
| LVEDd (mm, mean ± SD) | 59.86 ± 5.22 | 61.38 ± 4.99 | 61.85 ± 4.95 | 62.36 ± 4.52 | 0.047 |
| NT-proBNP (ng/L, mean ± SD) | 1830.32 ± 421.64 | 1913.90 ± 447.93 | 2364.98 ± 490.56 | 2482.70 ± 541.86 | < 0.001 |
| ST2 (μg/L, mean ± SD) | 51.26 ± 10.25 | 53.76 ± 9.92 | 52.97 ± 8.74 | 53.61 ± 8.07 | 0.382 |
| IL-6 (ng/L, mean ± SD) | 15.13 ± 2.98 | 17.66 ± 4.33 | 18.85 ± 3.84 | 19.38 ± 5.17 | < 0.001 |
| TNF-α (ng/L, mean ± SD) | 28.89 ± 5.85 | 31.72 ± 7.08 | 34.68 ± 5.84 | 35.32 ± 5.1 | < 0.001 |
| hs-CRP (ng/L, mean ± SD) | 12.27 ± 2.67 | 12.49 ± 2.71 | 13.03 ± 2.45 | 13.22 ± 2.54 | 0.185 |
| hs-cTn (ng/L, mean ± SD) | 22.94 ± 7.83 | 24.53 ± 7.99 | 24.45 ± 6.22 | 24.40 ± 6.67 | 0.293 |

NYHA: New York Heart Association; A&D: Anxiety and depression; LVEF: Left ventricular ejection fraction; LVEDd: Left ventricular end-diastolic dimension; NT-proBNP: N-terminal pro-brain natriuretic peptide; ST2: Growth stimulation expressed gene 2; IL-6: Interleukin-6; TNF-α: Tumor necrosis factor-alpha; hs-CRP: Hypersensitive C-reactive protein; hs-cTn: High sensitivity cardiac troponin.

Table 2 Comparison of Self-Rating Anxiety Scale and Self-Rating Depression Scale scores among different New York Heart Association classes

| Observation indices | I (n = 29) | II (n = 69) | III (n = 116) | IV (n = 19) | P value |
|---------------------|---------------|---------------|---------------|---------------|---------|
| SAS (mean ± SD) | 51.17 ± 16.54 | 53.84 ± 17.87 | 59.82 ± 15.51 | 65.58 ± 16.76 | 0.003 |
| SDS (mean ± SD) | 53.52 ± 16.85 | 56.72 ± 17.60 | 62.46 ± 14.75 | 68.89 ± 12.40 | 0.001 |

SAS: Self-Rating Anxiety Scale; SDS: Self-Rating Depression Scale.

Patients with NYHA class III and IV CHF had higher SAS and SDS scores than those with NYHA class I and II ($P < 0.05$) (Figure 2).

Prediction of early intervention

When comparing the myocardial and inflammatory level indicators, we found that the effects of LVEF, LVEDd, NT-proBNP, IL-6, TNF-α, and hs-CRP were larger than other observed indicators between the N/M and M/S groups ($P < 0.05$). Further details are presented in Table 3. The regression analysis identified LVEF, NT-proBNP, and IL-6 as independent predictors of CHF ($P < 0.05$), with IL-6 having the strongest predictive value (OR = 1.271, 95%CI: 1.095-1.476), followed by NT-proBNP (OR = 1.004, 95%CI: 1.003-1.006). We also found that LVEF was a protective factor against A&D as it increased (OR = 0.350, 95%CI: 0.226-0.541). The other variables were not deemed statistically significant in the regression analysis. Further details are presented in Table 4. The AUROC curve of the three independent factors showed that NT-proBNP had the best predictive effect, with an AUROC of 0.781 (0.724-0.839), whereas the predictive effects of LVEF and IL-6 were moderate and similar, with AUROCs of 0.661 (0.591-0.732) and 0.691 (0.624-0.758), respectively. The overall combined predictive value of the three indicators was relatively good, with an AUROC of 0.875 (0.820-0.929). Further details are shown in Figure 3.

Table 3 Inter-group comparison of the observed indicators of anxiety and depressive severity in patients, divided based on the requirement for early intervention

| Observation indices | No/mild-A&D (N/M) (n = 107) | Moderate/severe-A&D (N/S) (n = 126) | t/Z/ χ^2 | P value |
|-------------------------------------|-----------------------------|-------------------------------------|---------------|---------|
| LVEF (% , mean \pm SD) | 38.08 \pm 3.30 | 36.26 \pm 2.72 | 4.536 | < 0.001 |
| LVEDd (mm, mean \pm SD) | 60.46 \pm 5.16 | 61.98 \pm 4.83 | 2.778 | 0.005 |
| NT-proBNP (ng/L, mean \pm SD) | 1863.13 \pm 432.00 | 2395.81 \pm 505.30 | 8.656 | < 0.001 |
| ST2 (μ g/L, mean \pm SD) | 52.24 \pm 10.15 | 53.14 \pm 8.54 | 0.908 | 0.364 |
| IL-6 (ng/L, mean \pm SD) | 16.12 \pm 3.76 | 18.99 \pm 4.21 | 5.024 | < 0.001 |
| TNF- α (ng/L, mean \pm SD) | 30.00 \pm 6.48 | 34.84 \pm 5.64 | 6.105 | < 0.001 |
| hs-CRP (ng/L, mean \pm SD) | 12.36 \pm 2.67 | 13.08 \pm 2.46 | 2.144 | 0.033 |
| hs-cTn (ng/L, mean \pm SD) | 23.56 \pm 7.89 | 24.44 \pm 6.31 | 1.301 | 0.193 |

A&D: Anxiety and depression; LVEF: Left ventricular ejection fraction; LVEDd: Left ventricular end-diastolic dimension; NT-proBNP: N-terminal pro-brain natriuretic peptide; ST2: Growth stimulation expressed gene 2; IL-6: Interleukin-6; TNF- α : Tumor necrosis factor-alpha; hs-CRP: Hypersensitive C-reactive protein; hs-cTn: High sensitivity cardiac troponin; N/M: No/mild.

Table 4 Regression analysis of the myocardial and inflammatory level indicators between the no/mild and moderate/severe groups

| Observation indices | β | OR | P value | 95%CI |
|---------------------|---------|-------|---------|-------------|
| LVEF | -1.050 | 0.350 | < 0.001 | 0.226-0.541 |
| LVEDd | -0.182 | 0.834 | 0.095 | 0.673-1.032 |
| NT-proBNP | 0.004 | 1.004 | < 0.001 | 1.003-1.006 |
| IL-6 | 0.240 | 1.271 | 0.002 | 1.095-1.476 |
| TNF- α | -0.002 | 0.957 | 0.998 | 0.928-1.073 |
| hs-CRP | -0.430 | 0.651 | 0.060 | 0.416-1.019 |

LVEF: Left ventricular ejection fraction; LVEDd: Left ventricular end-diastolic dimension; NT-proBNP: N-terminal pro-brain natriuretic peptide; IL-6: Interleukin-6; TNF- α : Tumor necrosis factor-alpha; hs-CRP: Hypersensitive C-reactive protein; OR: Odds ratio; CI: Confidence interval.

DISCUSSION

Heart failure remains a global public health burden. Since mental health affects the incidence and outcomes of various health conditions[14], the psychological status of patients with CHF warrants attention, in addition to investigating diagnostic and treatment methods.

In this study, when comparing the no-A&D to severe-A&D groups, we observed an increase in LVEDd, NT-proBNP, IL-6 and TNF- α levels as the degree of A&D increased, whereas LVEF levels decreased. This finding indicates that patients with CHF may experience increased A&D symptoms as a result of abnormal myocardial parameters and inflammatory stress, resulting in worse outcomes. Physiologically, A&D symptoms manifest as part of the body's response to chronic stress exposure, which causes a maladaptive stress response in which the sympathetic nervous system and hypothalamic-pituitary-adrenal axis are activated. This increases the heart rate, output, and load[15,16] and, over time, the blood flow through the coronary arteries decreases, ultimately leading to myocardial ischemia[17]. While CHF is accompanied by some extent of myocardial dysfunction, the stress response aggravates this by causing further myocardial cell injury, impairing myocardial contractile function, and leading to a reduction in LVEF and an increase in LVEDd. When under significant load, myocardial cells secrete NT-proBNP, which functions as a natriuretic, diuretic, and vasodilator, to reduce pressure and restore homeostasis[18]. NT-proBNP levels increase with the degree of A&D symptoms and changes in LVEF and NT-proBNP levels indicate that A&D further aggravates myocardial dysfunction in patients with CHF. Research has shown that higher serum levels of inflammatory factors can lead to weakening of the strength and mass of the myocardium, a specialized type of tissue in the human body[19]. Therefore, patients with CHF are vulnerable to high levels of inflammation. Additionally, A&D can lead to endocrine and immune system imbalances that promote inflammatory responses in the body[20]. In the current study, IL-6 and TNF- α expression levels gradually increased as the extent of A&D increased, which is consistent with Lamers *et al*[10].

Our results suggest an association between myocardial indicators, inflammatory factor levels, and the degree of A&D. Therefore, when treating patients with both CHF and A&D symptoms, physicians should be aware of the increased risk

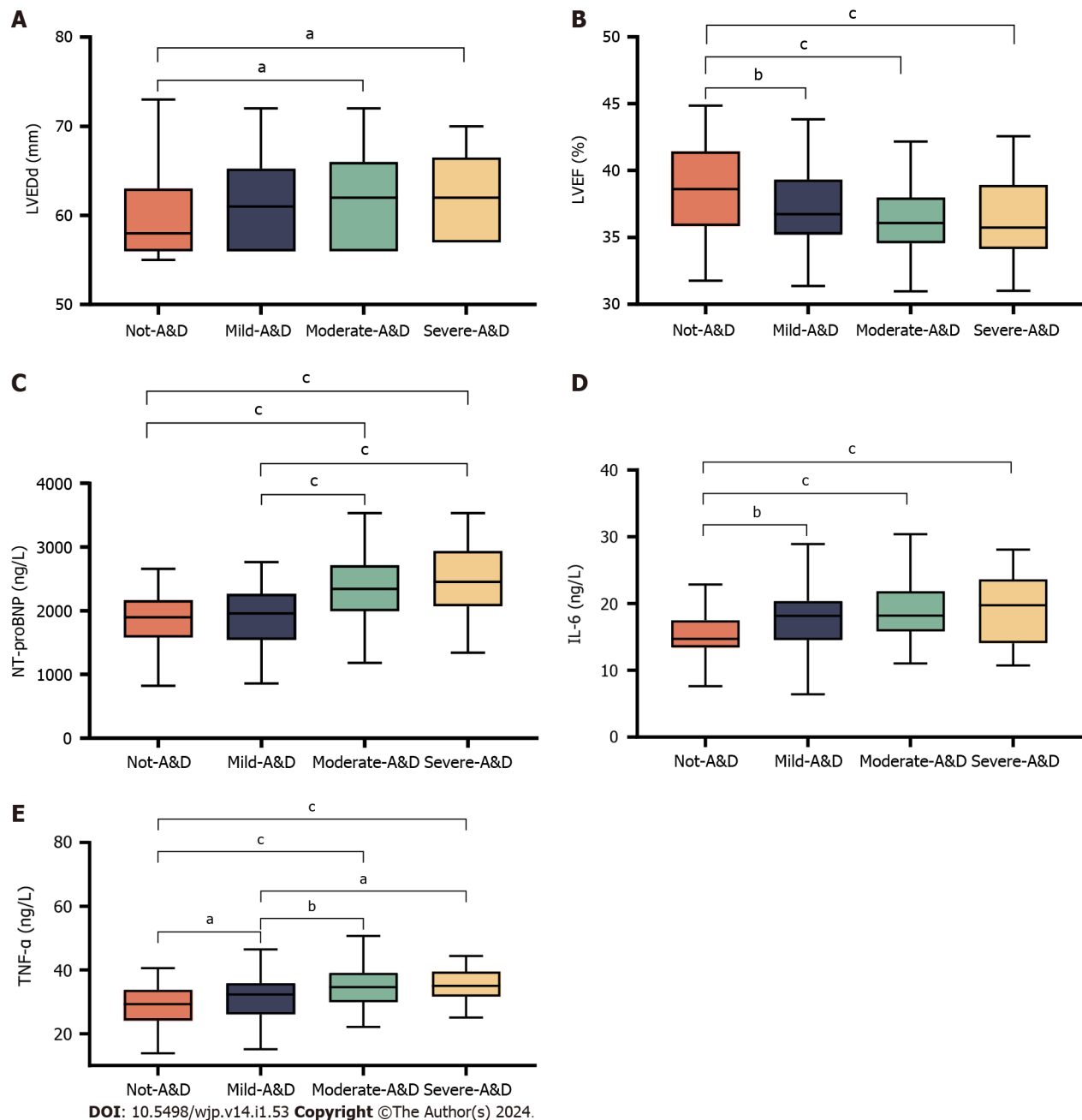


Figure 1 Post hoc multiple comparisons of significant influencing factors in patients with different levels of anxiety and depression. A: Post hoc multiple comparisons of the left ventricular ejection fraction; B: Post hoc multiple comparisons of the left ventricular end-diastolic dimensions; C: Post hoc multiple comparisons of N-terminal pro-brain natriuretic peptide; D: Post hoc multiple comparisons of interleukin-6; E: Post hoc multiple comparisons of tumor necrosis factor- α (TNF- α). ^a $P < 0.05$, ^b $P < 0.01$, ^c $P < 0.001$. A&D: Anxiety and depression; No-A&D: No anxiety and depression symptoms; Mild-A&D: Mild anxiety and depression symptoms; Moderate-A&D: Moderate anxiety and depression symptoms; Severe-A&D: Severe anxiety and depression symptoms; LVEF: Left ventricular ejection fraction; LVEDd: Left ventricular end-diastolic dimensions; NT-proBNP: N-terminal pro-brain natriuretic peptide; TNF- α : Tumor necrosis factor- α ; IL-6: Interleukin-6.

of myocardial ischemia and inflammation and prepare the appropriate prophylactic interventions, such as administering calcium overload inhibitors and anti-inflammatory drugs. Zhao *et al*[21] found that the administration of active oxygen nanomaterials effectively improved drug treatment and reduced side effects. The side effects of any pharmacological intervention for CHF and A&D should be considered to avoid worsening the prognosis of patients. Recent studies have indicated that cognitive behavioral therapy and collaborative care have positive effects on alleviating A&D[22,23], and present a safer way to avoid psychotropic drug-induced secondary myocardial damage.

The NYHA classification assesses the self-reported functional status of patients with CHF and indirectly reflects cardiac function. In the present study, the mean SAS and SDS scores consistently increased with each NYHA class, which is consistent with a previous study[24] exploring depression in patients with coronary heart disease. This finding was unsurprising because the NYHA classification closely reflects the patient's quality of life and the higher the NYHA class, the more restrictions the patient experiences in daily life and mobility, such as inability to work, participate in their hobbies, and socialize, all of which induce A&D[25]. Moreover, A&D can lead to reduced compliance with treatment

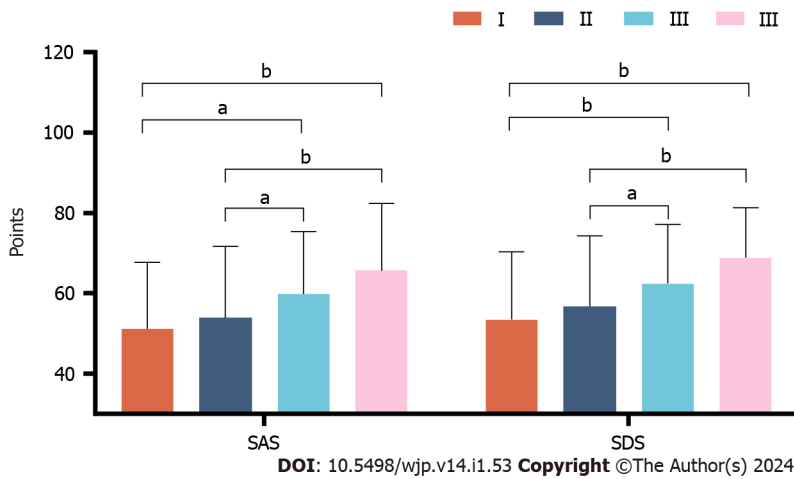


Figure 2 Post hoc multiple comparisons of Self-Rating Anxiety Scale and Self-Rating Depression Scale scores among different New York Heart Association classes. ^a $P < 0.05$, ^b $P < 0.01$. SAS: Self-Rating Anxiety Scale; SDS: Self-Rating Depression Scale.

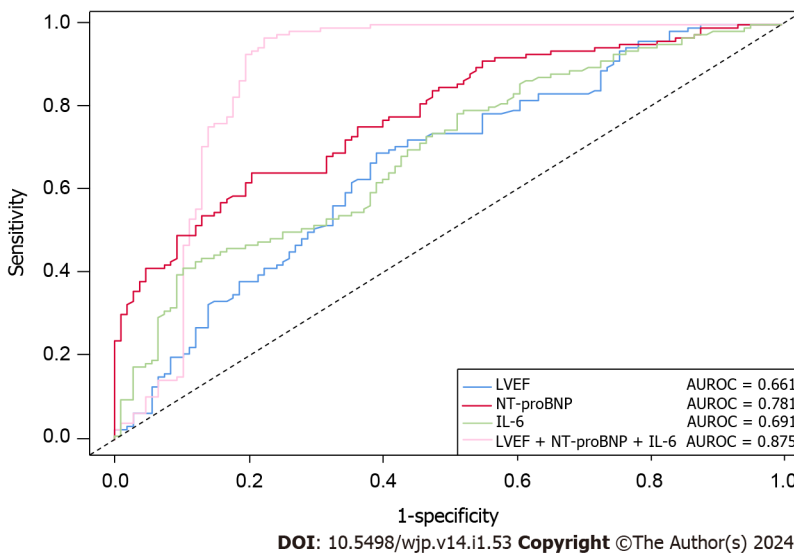


Figure 3 Dichotomous evaluation of left ventricular ejection fraction, N-terminal pro-brain natriuretic peptide, and interleukin-6 by region under receiver operating characteristics. LVEF: Left ventricular ejection fraction; NT-proBNP: N-terminal pro-brain natriuretic peptide; IL-6: Interleukin-6; AUROC: Area under the receiver operating characteristic curve.

regimens, which further impacts quality of life, resulting in more individuals progressing to higher NYHA classes, increased hospitalization, and mortality. Hence, medical health providers must consider psychological status in the treatment and management of patients with CHF, in addition to physical symptoms and cardiac function. Providing psychological support, educating patients on disease management, and encouraging them to engage in suitable physical activities and socialization are important measures to improve health outcomes of patients with A&D.

In patients where daily activities have not yet been affected by A&E, we do not recommend targeted interventions such as personalized psychological counselling and cognitive behavioral therapy[13,26]. In this study, we observed different SAS and SDS scores in the N/M and M/S groups. Regression analysis revealed that the combination of LVEF, NT-proBNP, and IL-6 had good predictive and discriminative value between the N/M and M/S groups. These factors comprehensively reflect cardiac function, heart load, and inflammatory state; therefore, compared with single-index predictions, they can more accurately determine A&D severity in patients with CHF. Severe A&D is a complex multifactorial disorder that is influenced by genetic, biological, psychological, and environmental factors. Existing studies have shown the predictive value of conventional biochemical indices, such as leukocytes in the hematopoietic system and uric acid in inflammatory mediators, in discriminating bipolar disorder and depression in the general population, with females exhibiting better predictive effects than males (AUROC = 0.793)[27]. Similarly, in the present study, we constructed a model using myocardial indices and inflammatory factors to predict A&D severity in patients with CHF and demonstrated a relatively good prediction effect (AUROC = 0.875). Perhaps, this was attributable to the targeted groupings used in the analysis.

Overall, the combination of biochemical indicators of A&D severity provides an objective reference for the classification of patients, which is essential for accurate diagnosis. Specialized prediction models for comorbidities, such as patients with both A&D and CHF, are also warranted.

In this study, we found a preliminary association between A&D levels, myocardial indicators, and inflammation in patients with CHF and identified potential indicators and models for classifying A&D on a physiological basis. However, this single-center retrospective study had some limitations in terms of the sample size and reliance on standardized self-reported questionnaires. Future longitudinal studies with larger sample sizes are warranted to validate the association between myocardial indicators, inflammation levels, and A&D.

CONCLUSION

Cardiac parameters (NT-proBNP and LVEF) and levels of inflammatory factors (IL-6 and TNF- α) significantly vary with the degree of A&D. IL-6, NT-proBNP, and LVEF are independent factors that can distinguish between moderate and severe A&D from no A&D or mild A&D. When combined, they have a high discriminative ability towards A&D.

ARTICLE HIGHLIGHTS

Research background

Anxiety and depression (A&D) are common in patients with chronic heart failure (CHF). While extensive research on the general demographic characteristics and A&D data in patients with CHF has been conducted, research on myocardial markers and inflammatory factor levels remains limited. Uncovering the relationship between myocardial markers, inflammatory factor levels, and the degree of A&D in patients with CHF can further supplement and assist in evaluating and classifying A&D severity in patients.

Research motivation

The differential levels of myocardial markers and inflammatory factors depending on A&D severity in patients with CHF could serve as objective evidence to assist clinicians in assessing and classifying the extent of A&D. This could correct for the subjectivity of the general assessment scales, facilitating a more precise distinction between CHF patients with different degrees of A&D, enabling physicians to better manage and rationally allocate medical resources, and providing the potential for personalized treatment.

Research objectives

We classified patients with CHF with varying degrees of A&D based on myocardial markers and inflammatory factor levels and showed that some factors had good discriminative ability, providing the possibility of establishing and assisting in the evaluation of A&D severity in patients with CHF based on biochemical markers.

Research methods

We further explored the inter-group differences in myocardial and inflammatory indicators and showed their ability to predict A&D severity in patients with CHF using regression and the area under the receiver operating characteristic curve (AUROC) analyses.

Research results

Left ventricular ejection fraction, N-terminal pro-brain natriuretic peptide, and interleukin-6 were used in combination to predict and classify 233 patients with CHF in this study into no/mild- and moderate/severe-A&D and achieved good results (AUROC = 0.875, 95% confidence interval: 0.820-0.929).

Research conclusions

Based on our retrospective analysis, we propose that the combination of myocardial and inflammatory factor levels could assist in assessing and classifying the severity of A&D in patients with CHF.

Research perspectives

We plan to further combine other biochemical markers, such as hormone levels, with these classification-effective factors and apply targeted interventions to observe patient outcomes and evaluate changes in A&D severity among patients. This will help to validate our preliminary findings and investigate the potential roles of these biochemical markers in guiding CHF management.

FOOTNOTES

Co-first authors: Li Zhang and Qiang Wang.

Author contributions: Zhang L and Wang Q contributed equally to this work as first co-authors. Zhang L and Wang Q conceived, designed, and refined the study protocol; Cui HS was involved in data collection and analysis; Luo YY guided and supervised the research; and all authors were involved in the critical review of the results and have contributed to, read, and approved the final manuscript.

Institutional review board statement: The study was reviewed and approved by the Jingzhou Hospital, Yangtze University Institutional Review Board (2023-053-01).

Informed consent statement: The requirement for informed consent was waived given the retrospective nature of the study.

Conflict-of-interest statement: All the authors report no relevant conflicts of interest for this article.

Data sharing statement: The clinical data used in this study can be obtained from the corresponding author upon request.

Open-Access: This article is an open-access article that was selected by an in-house editor and fully peer-reviewed by external reviewers. It is distributed in accordance with the Creative Commons Attribution NonCommercial (CC BY-NC 4.0) license, which permits others to distribute, remix, adapt, build upon this work non-commercially, and license their derivative works on different terms, provided the original work is properly cited and the use is non-commercial. See: <https://creativecommons.org/licenses/by-nc/4.0/>

Country/Territory of origin: China

ORCID number: Li Zhang 0009-0004-9381-9468; Qiang Wang 0009-0009-4327-9367; Hong-Sheng Cui 0009-0002-5879-4299; Yuan-Yuan Luo 0009-0006-9211-1593.

S-Editor: Wang JJ

L-Editor: A

P-Editor: Yuan YY

REFERENCES

- McDonagh TA, Metra M, Adamo M, Gardner RS, Baumbach A, Böhm M, Burri H, Butler J, Čelutkienė J, Chioncel O, Cleland JGF, Coats AJS, Crespo-Leiro MG, Farmakis D, Gilard M, Heymans S, Hoes AW, Jaarsma T, Jankowska EA, Lainscak M, Lam CSP, Lyon AR, McMurray JJV, Mebazaa A, Mindham R, Muneretto C, Francesco Piepoli M, Price S, Rosano GMC, Ruschitzka F, Kathrine Skibelund A; ESC Scientific Document Group. 2021 ESC Guidelines for the diagnosis and treatment of acute and chronic heart failure: Developed by the Task Force for the diagnosis and treatment of acute and chronic heart failure of the European Society of Cardiology (ESC). With the special contribution of the Heart Failure Association (HFA) of the ESC. *Eur J Heart Fail* 2022; **24**: 4-131 [PMID: 35083827 DOI: 10.1002/ehf.2333]
- Al Shamiri MQ, Almushawah AA, Alsomali AH, Alsuwayegh MB, Aljaffer MA, Hayajneh AM, Prajjwal P. The Prevalence of Depression and Anxiety in Heart Failure Patients in Saudi Arabia: An Original Study. *Cureus* 2023; **15**: e36997 [PMID: 37139016 DOI: 10.7759/cureus.36997]
- Manolis TA, Manolis AA, Melita H, Manolis AS. Neuropsychiatric disorders in patients with heart failure: not to be ignored. *Heart Fail Rev* 2023; **28**: 821-858 [PMID: 36547867 DOI: 10.1007/s10741-022-10290-2]
- Alhurani AS, Dekker RL, Abed MA, Khalil A, Al Zagal MH, Lee KS, Mudd-Martin G, Biddle MJ, Lennie TA, Moser DK. The association of co-morbid symptoms of depression and anxiety with all-cause mortality and cardiac rehospitalization in patients with heart failure. *Psychosomatics* 2015; **56**: 371-380 [PMID: 25556571 DOI: 10.1016/j.psych.2014.05.022]
- Celano CM, Villegas AC, Albanese AM, Gaggin HK, Huffman JC. Depression and Anxiety in Heart Failure: A Review. *Harv Rev Psychiatry* 2018; **26**: 175-184 [PMID: 29975336 DOI: 10.1097/HRP.0000000000000162]
- Hao G, Wang X, Chen Z, Zhang L, Zhang Y, Wei B, Zheng C, Kang Y, Jiang L, Zhu Z, Zhang J, Wang Z, Gao R; China Hypertension Survey Investigators. Prevalence of heart failure and left ventricular dysfunction in China: the China Hypertension Survey, 2012-2015. *Eur J Heart Fail* 2019; **21**: 1329-1337 [PMID: 31746111 DOI: 10.1002/ehf.1629]
- Wang Z, Cai Z, Ferrari MW, Liu Y, Li C, Zhang T, Lyu G. The Correlation between Gut Microbiota and Serum Metabolomic in Elderly Patients with Chronic Heart Failure. *Mediators Inflamm* 2021; **2021**: 5587428 [PMID: 34744513 DOI: 10.1155/2021/5587428]
- Yasuhara S, Maekawa M, Bamba S, Kurihara M, Nakanishi N, Yamamoto T, Sakai H, Yagi N, Nakagawa Y, Sasaki M. Energy Metabolism and Nutritional Status in Hospitalized Patients with Chronic Heart Failure. *Ann Nutr Metab* 2020; **76**: 129-139 [PMID: 32259814 DOI: 10.1159/000507355]
- Liu X, Xu Y, Liu X, Zhou X. Associations of systemic inflammatory markers with the risks of chronic heart failure: A case-control study. *Clinics (Sao Paulo)* 2022; **77**: 100056 [PMID: 35714381 DOI: 10.1016/j.clinsp.2022.100056]
- Lamers F, Milanesechi Y, Smit JH, Schoevers RA, Wittenberg G, Penninx BWJH. Longitudinal Association Between Depression and Inflammatory Markers: Results From the Netherlands Study of Depression and Anxiety. *Biol Psychiatry* 2019; **85**: 829-837 [PMID: 30819515 DOI: 10.1016/j.biopsych.2018.12.020]
- Zou W, Feng R, Yang Y. Changes in the serum levels of inflammatory cytokines in antidepressant drug-naïve patients with major depression. *PLoS One* 2018; **13**: e0197267 [PMID: 29856741 DOI: 10.1371/journal.pone.0197267]
- Zung WW. A rating instrument for anxiety disorders. *Psychosomatics* 1971; **12**: 371-379 [PMID: 5172928 DOI: 10.1016/S0033-3182(71)71479-0]
- Zung WW. A SELF-RATING DEPRESSION SCALE. *Arch Gen Psychiatry* 1965; **12**: 63-70 [PMID: 14221692 DOI: 10.1001/archpsyc.1965.01720310065008]
- Cai W, Mueller C, Li YJ, Shen WD, Stewart R. Post stroke depression and risk of stroke recurrence and mortality: A systematic review and meta-analysis. *Ageing Res Rev* 2019; **50**: 102-109 [PMID: 30711712 DOI: 10.1016/j.arr.2019.01.013]

- 15 **Mifsud KR**, Reul JM. Mineralocorticoid and glucocorticoid receptor-mediated control of genomic responses to stress in the brain. *Stress* 2018; **21**: 389-402 [PMID: 29614900 DOI: 10.1080/10253890.2018.1456526]
- 16 **Ketchesin KD**, Stinnett GS, Seasholtz AF. Corticotropin-releasing hormone-binding protein and stress: from invertebrates to humans. *Stress* 2017; **20**: 449-464 [PMID: 28436309 DOI: 10.1080/10253890.2017.1322575]
- 17 **Sara JDS**, Toya T, Ahmad A, Clark MM, Gilliam WP, Lerman LO, Lerman A. Mental Stress and Its Effects on Vascular Health. *Mayo Clin Proc* 2022; **97**: 951-990 [PMID: 35512885 DOI: 10.1016/j.mayocp.2022.02.004]
- 18 **Alawieh H**, Chemaly TE, Alam S, Khraiche M. Towards Point-of-Care Heart Failure Diagnostic Platforms: BNP and NT-proBNP Biosensors. *Sensors (Basel)* 2019; **19** [PMID: 31744130 DOI: 10.3390/s19225003]
- 19 **Tuttle CSL**, Thang LAN, Maier AB. Markers of inflammation and their association with muscle strength and mass: A systematic review and meta-analysis. *Ageing Res Rev* 2020; **64**: 101185 [PMID: 32992047 DOI: 10.1016/j.arr.2020.101185]
- 20 **Qiu W**, Cai X, Zheng C, Qiu S, Ke H, Huang Y. Update on the Relationship Between Depression and Neuroendocrine Metabolism. *Front Neurosci* 2021; **15**: 728810 [PMID: 34531719 DOI: 10.3389/fnins.2021.728810]
- 21 **Zhao T**, Wu W, Sui L, Huang Q, Nan Y, Liu J, Ai K. Reactive oxygen species-based nanomaterials for the treatment of myocardial ischemia reperfusion injuries. *Bioact Mater* 2022; **7**: 47-72 [PMID: 34466716 DOI: 10.1016/j.bioactmat.2021.06.006]
- 22 **Freedland KE**, Skala JA, Carney RM, Steinmeyer BC, Rubin EH, Rich MW. Sequential Interventions for Major Depression and Heart Failure Self-Care: A Randomized Clinical Trial. *Circ Heart Fail* 2022; **15**: e009422 [PMID: 35973032 DOI: 10.1161/CIRCHEARTFAILURE.121.009422]
- 23 **Bekelman DB**, Allen LA, McBryde CF, Hattler B, Fairclough DL, Havranek EP, Turvey C, Meek PM. Effect of a Collaborative Care Intervention vs Usual Care on Health Status of Patients With Chronic Heart Failure: The CASA Randomized Clinical Trial. *JAMA Intern Med* 2018; **178**: 511-519 [PMID: 29482218 DOI: 10.1001/jamainternmed.2017.8667]
- 24 **Yin H**, Liu Y, Ma H, Liu G, Guo L, Geng Q. Associations of mood symptoms with NYHA functional classes in angina pectoris patients: a cross-sectional study. *BMC Psychiatry* 2019; **19**: 85 [PMID: 30836983 DOI: 10.1186/s12888-019-2061-3]
- 25 **Nabdi S**, Boujraf S, Benzagmout M. The influence of physical activity, social relationships, and diet intake on depression: a case-series study. *Ann Med Surg (Lond)* 2023; **85**: 1395-1402 [PMID: 37229093 DOI: 10.1097/MS9.0000000000000406]
- 26 **Plati DK**, Tripoliti EE, Bechlioulis A, Rammos A, Dimou I, Lakkas L, Watson C, McDonald K, Ledwidge M, Pharithi R, Gallagher J, Michalis LK, Goletsis Y, Naka KK, Fotiadis DI. A Machine Learning Approach for Chronic Heart Failure Diagnosis. *Diagnostics (Basel)* 2021; **11** [PMID: 34679561 DOI: 10.3390/diagnostics11101863]
- 27 **Trivedi MH**. Major Depressive Disorder in Primary Care: Strategies for Identification. *J Clin Psychiatry* 2020; **81** [PMID: 32220155 DOI: 10.3389/fpsyt.2022.875141]



Published by **Baishideng Publishing Group Inc**
7041 Koll Center Parkway, Suite 160, Pleasanton, CA 94566, USA

Telephone: +1-925-3991568

E-mail: office@baishideng.com

Help Desk: <https://www.f6publishing.com/helpdesk>

<https://www.wjgnet.com>

