

World Journal of *Diabetes*

World J Diabetes 2024 February 15; 15(2): 129-307



Contents

Monthly Volume 15 Number 2 February 15, 2024

EDITORIAL

- 129 Balancing act: The dilemma of rapid hyperglycemia correction in diabetes management
Zhang KX, Kan CX, Sun XD
- 133 Glucagon-like peptide-1 receptor agonists as a possible intervention to delay the onset of type 1 diabetes: A new horizon
Nassar M, Chaudhuri A, Ghanim H, Dandona P
- 137 Elucidating the cardioprotective mechanisms of sodium-glucose cotransporter-2 inhibitors beyond glycemic control
Zhang KX, Kan CX, Han F, Zhang JW, Sun XD

REVIEW

- 142 Genotype-based precision nutrition strategies for the prediction and clinical management of type 2 diabetes mellitus
Ramos-Lopez O
- 154 Emerging and multifaceted potential contributions of polyphenols in the management of type 2 diabetes mellitus
González I, Lindner C, Schneider I, Diaz E, Morales MA, Rojas A

ORIGINAL ARTICLE

Clinical and Translational Research

- 170 Identification of hub genes associated with *Helicobacter pylori* infection and type 2 diabetes mellitus: A pilot bioinformatics study
Chen H, Zhang GX, Zhou XY

Case Control Study

- 186 Experience of humanistic nursing in hemodialysis nursing for patients with diabetic kidney disease
Chai XY, Bao XY, Dai Y, Dai XX, Zhang Y, Yang YL
- 196 Analysis of the influencing factors and clinical related characteristics of pulmonary tuberculosis in patients with type 2 diabetes mellitus
Shi H, Yuan Y, Li X, Li YF, Fan L, Yang XM

Retrospective Study

- 209 Vitamin D, selenium, and antidiabetic drugs in the treatment of type 2 diabetes mellitus with Hashimoto's thyroiditis
Feng F, Zhou B, Zhou CL, Huang P, Wang G, Yao K

- 220 Effect of viral hepatitis on type 2 diabetes: A Mendelian randomization study

Yu YF, Hu G, Tong KK, Yang XY, Wu JY, Yu R

Observational Study

- 232 Serum tumor markers expression (CA199, CA242, and CEA) and its clinical implications in type 2 diabetes mellitus

Meng M, Shi LL

- 240 Age-specific differences in the association between prediabetes and cardiovascular diseases in China: A national cross-sectional study

Xie S, Yu LP, Chen F, Wang Y, Deng RF, Zhang XL, Zhang B

- 251 Application of non-mydriatic fundus photography-assisted telemedicine in diabetic retinopathy screening

Zhou W, Yuan XJ, Li J, Wang W, Zhang HQ, Hu YY, Ye SD

Basic Study

- 260 Long noncoding RNA protein-disulfide isomerase-associated 3 regulated high glucose-induced podocyte apoptosis in diabetic nephropathy through targeting miR-139-3p

He YX, Wang T, Li WX, Chen YX

- 275 Assessment of pathogenicity and functional characterization of *APPL1* gene mutations in diabetic patients

Shi P, Tian Y, Xu F, Liu LN, Wu WH, Shi YZ, Dai AQ, Fang HY, Li KX, Xu C

- 287 Duodenal-jejunal bypass improves hypothalamic oxidative stress and inflammation in diabetic rats *via* glucagon-like peptide 1-mediated Nrf2/HO-1 signaling

Wang HJ, Zhang LB, Sun SP, Yan QT, Gao ZQ, Fu FM, Qu MH

LETTER TO THE EDITOR

- 305 Diabetes is affecting everyone everywhere

Gupta PC, Duggal M, Morya AK

ABOUT COVER

Editorial Board Member of *World Journal of Diabetes*, Liang-Jun Yan, PhD, Professor, Department of Pharmaceutical Sciences, College of Pharmacy, University of North Texas Health Science Center, Fort Worth, TX 76107, United States. liang-jun.yan@unthsc.edu

AIMS AND SCOPE

The primary aim of *World Journal of Diabetes* (*WJD*, *World J Diabetes*) is to provide scholars and readers from various fields of diabetes with a platform to publish high-quality basic and clinical research articles and communicate their research findings online.

WJD mainly publishes articles reporting research results and findings obtained in the field of diabetes and covering a wide range of topics including risk factors for diabetes, diabetes complications, experimental diabetes mellitus, type 1 diabetes mellitus, type 2 diabetes mellitus, gestational diabetes, diabetic angiopathies, diabetic cardiomyopathies, diabetic coma, diabetic ketoacidosis, diabetic nephropathies, diabetic neuropathies, Donohue syndrome, fetal macrosomia, and prediabetic state.

INDEXING/ABSTRACTING

The *WJD* is now abstracted and indexed in Science Citation Index Expanded (SCIE, also known as SciSearch®), Current Contents/Clinical Medicine, Journal Citation Reports/Science Edition, PubMed, PubMed Central, Reference Citation Analysis, China Science and Technology Journal Database, and Superstar Journals Database. The 2023 Edition of Journal Citation Reports® cites the 2022 impact factor (IF) for *WJD* as 4.2; IF without journal self cites: 4.1; 5-year IF: 4.5; Journal Citation Indicator: 0.69; Ranking: 51 among 145 journals in endocrinology and metabolism; and Quartile category: Q2.

RESPONSIBLE EDITORS FOR THIS ISSUE

Production Editor: *Yu-Xi Chen*; Production Department Director: *Xu Guo*; Editorial Office Director: *Jia-Ru Fan*.

NAME OF JOURNAL

World Journal of Diabetes

ISSN

ISSN 1948-9358 (online)

LAUNCH DATE

June 15, 2010

FREQUENCY

Monthly

EDITORS-IN-CHIEF

Lu Cai, Md. Shahidul Islam, Michael Horowitz

EDITORIAL BOARD MEMBERS

<https://www.wjgnet.com/1948-9358/editorialboard.htm>

PUBLICATION DATE

February 15, 2024

COPYRIGHT

© 2024 Baishideng Publishing Group Inc

INSTRUCTIONS TO AUTHORS

<https://www.wjgnet.com/bpg/gerinfo/204>

GUIDELINES FOR ETHICS DOCUMENTS

<https://www.wjgnet.com/bpg/GerInfo/287>

GUIDELINES FOR NON-NATIVE SPEAKERS OF ENGLISH

<https://www.wjgnet.com/bpg/gerinfo/240>

PUBLICATION ETHICS

<https://www.wjgnet.com/bpg/GerInfo/288>

PUBLICATION MISCONDUCT

<https://www.wjgnet.com/bpg/gerinfo/208>

ARTICLE PROCESSING CHARGE

<https://www.wjgnet.com/bpg/gerinfo/242>

STEPS FOR SUBMITTING MANUSCRIPTS

<https://www.wjgnet.com/bpg/GerInfo/239>

ONLINE SUBMISSION

<https://www.f6publishing.com>

Retrospective Study

Effect of viral hepatitis on type 2 diabetes: A Mendelian randomization study

Yun-Feng Yu, Gang Hu, Ke-Ke Tong, Xin-Yu Yang, Jing-Yi Wu, Rong Yu

Specialty type: Endocrinology and metabolism**Provenance and peer review:** Unsolicited article; Externally peer reviewed.**Peer-review model:** Single blind**Peer-review report's scientific quality classification**Grade A (Excellent): 0
Grade B (Very good): 0
Grade C (Good): C, C, C
Grade D (Fair): 0
Grade E (Poor): 0**P-Reviewer:** Buechler C, Germany; Horowitz M, Australia; Yang SS, Taiwan**Received:** November 11, 2023**Peer-review started:** November 11, 2023**First decision:** November 30, 2023**Revised:** December 13, 2023**Accepted:** January 17, 2024**Article in press:** January 17, 2024**Published online:** February 15, 2024**Yun-Feng Yu, Gang Hu, Rong Yu,** The First Hospital of Hunan University of Chinese Medicine, Changsha 410007, Hunan Province, China**Ke-Ke Tong,** The Hospital of Hunan University of Traditional Chinese Medicine, Changde 415213, Hunan Province, China**Xin-Yu Yang,** College of Chinese Medicine, Hunan University of Chinese Medicine, Changsha 410208, Hunan Province, China**Jing-Yi Wu,** The Third Hospital of Zhejiang Chinese Medical University, Hangzhou 310005, Zhejiang Province, China**Corresponding author:** Rong Yu, MD, The First Hospital of Hunan University of Chinese Medicine, No. 95 Shaoshan Middle Road, Yuhua District, Changsha 410007, Hunan Province, China. yurong196905@163.com

Abstract

BACKGROUND

The effects of viral hepatitis (VH) on type 2 diabetes (T2D) remain controversial.

AIM

To analyze the causal correlation between different types of VH and T2D using Mendelian randomization (MR).

METHODS

Single nucleotide polymorphisms of VH, chronic hepatitis B (CHB), chronic hepatitis C (CHC) and T2D were obtained from the BioBank Japan Project, European Bioinformatics Institute, and FinnGen. Inverse variance weighted, MR-Egger, and weighted median were used to test exposure-outcome associations. The MR-Egger intercept analysis and Cochran's Q test were used to assess horizontal pleiotropy and heterogeneity, respectively. Leave-one-out sensitivity analysis was used to evaluate the robustness of the MR analysis results.

RESULTS

The MR analysis showed no significant causal relationship between VH and T2D in Europeans [odds ratio (OR) = 1.028; 95% confidence interval (CI): 0.995-1.062, $P = 0.101$]. There was a negative causal association between CHB and T2D among East Asians (OR = 0.949; 95%CI: 0.931-0.968, $P < 0.001$), while there was no

significant causal association between CHC and T2D among East Asians (OR = 1.018; 95%CI: 0.959-1.081, $P = 0.551$). Intercept analysis and Cochran's Q test showed no horizontal pleiotropy or heterogeneity ($P > 0.05$). Sensitivity analysis showed that the results were robust.

CONCLUSION

Among East Asians, CHB is associated with a reduced T2D risk, but this association is limited by HBV load and cirrhosis. Although VH among Europeans and CHC among East Asians are not associated with the risk of T2D, focusing on blood glucose in patients with CHC is still relevant for the early detection of T2D induced by CHC-mediated pathways of hepatic steatosis, liver fibrosis, and cirrhosis.

Key Words: Viral hepatitis; Chronic hepatitis B; Chronic hepatitis C; Type 2 diabetes; Mendelian randomization

©The Author(s) 2024. Published by Baishideng Publishing Group Inc. All rights reserved.

Core Tip: The effects of hepatitis B and C on type 2 diabetes (T2D) remain controversial. The study aims to analyze the causal relationship of T2D with chronic hepatitis B (CHB) and chronic hepatitis C (CHC) by Mendelian randomization (MR). This MR analysis showed that in East Asians, CHC was not associated with T2D risk, whereas CHB was associated with a reduced risk of T2D. Although this MR analysis did not find a causal relationship between CHC and T2D, focusing on blood glucose in patients with CHC is still relevant, which helps early detect T2D induced by CHC-mediated other hepatic lesions.

Citation: Yu YF, Hu G, Tong KK, Yang XY, Wu JY, Yu R. Effect of viral hepatitis on type 2 diabetes: A Mendelian randomization study. *World J Diabetes* 2024; 15(2): 220-231

URL: <https://www.wjgnet.com/1948-9358/full/v15/i2/220.htm>

DOI: <https://dx.doi.org/10.4239/wjd.v15.i2.220>

INTRODUCTION

Type 2 diabetes (T2D) is a chronic metabolic disease characterized by relative insulin deficiency and abnormally elevated blood glucose[1]. An epidemiological study has shown that as the prevalence of diabetes increases each year, approximately 1 in 10 adults globally now have diabetes, and it is projected that by 2045, the world will have 693 million individuals with diabetes[2,3]. As an incurable disease, the hyperglycemic state in T2D increases the risk of macrovascular pathologies, such as cardiovascular disease, and microvascular pathologies, such as nephropathy, retinopathy, and peripheral neuropathy[4,5]. T2D is a serious threat to the life and health of patients, especially the thrombotic events caused by cardiovascular and cerebrovascular lesions, which are the leading causes of death in patients with T2D[2,6]. Obesity, high-fat diet, and physical inactivity are risk factors for T2D, and controlling these risk factors helps reduce the risk of developing T2D and improve its prognosis[7,8]. Therefore, controlling the related risk factors, particularly high-risk factors, is essential for the prevention and treatment of T2D. In recent years, an increasing number of studies have reported an association between hepatitis viruses and diabetes mellitus[9], and evidence suggests that chronic viral hepatitis (VH) may be a potential risk factor for T2D[10,11].

VH, an inflammatory disease of the liver caused by infection with the hepatitis A virus (HAV), hepatitis B virus (HBV), hepatitis C virus (HCV), hepatitis D virus (HDV), or hepatitis E virus (HEV), is a major global health problem[12]. These viruses cause acute hepatitis, and HBV, HCV, and HDV infections progress to chronic hepatitis[13,14]. Globally, approximately 257 million individuals have been reported to be infected with HBV, and 71 million are infected with HCV[15]. Chronic hepatitis B (CHB) from HBV infection and chronic hepatitis C (CHC) from HCV infection cause persistent damage to the liver, resulting in liver fibrosis, cirrhosis, liver cancer, and even death[13,16]. Relevant studies have shown that hepatitis B cirrhosis and HCV infection increased the risk of T2D by 74% and 1058%, respectively[11,17], suggesting that CHB and CHC are potential risk factors for T2D. This effect may be related to the signaling pathway by which hepatitis viruses alter hepatic glucose homeostasis by mediating the overexpression of protein phosphatase 2A to inhibit Akt and FoxO1 dephosphorylation[18]. However, some studies have reported that HBV and HCV infections do not increase the incidence of T2D[19,20], which indirectly negates the relationships of them. Whether different categories of VH, especially CHB and CHC, are associated with the risk of T2D remains controversial, and the causal relationship between them needs to be further explored.

Mendelian randomization (MR) is a method for assessing the causal relationship between exposure and outcome variables using genetic variants[21]. Due to the randomized nature of allele classification, MR has properties similar to those of randomized controlled trials[22]. Although MR cannot be used as a substitute for randomized controlled trials, it provides additional evidence for causality analysis[23]. This MR analysis explored the causal relationship between T2D and VH, CHB, and CHC from a gene prediction perspective, with the aim of providing additional evidence for risk factor studies in diabetes.

MATERIALS AND METHODS

Study design

MR relies on three primary assumptions[24]: (1) Association assumption: Single nucleotide polymorphisms (SNPs) are strongly associated with exposure factors; (2) Independence assumption: SNPs are independent of confounding variables; and (3) Exclusivity assumption: SNPs do not act on outcome variables through pathways other than through exposure factors. The design is illustrated in Figure 1.

Data sources

Data on VH, CHB, CHC, and T2D were obtained from the BioBank Japan Project (<https://biobankjp.org/en/>), European Bioinformatics Institute (<https://www.ebi.ac.uk>), and FinnGen (www.finnngen.fi/fi). All the data were sourced from publicly available databases; therefore, no additional ethical approval was required.

Selection of genetic instrument variables

First, SNPs strongly associated with exposure factors were screened in the genome-wide association studies (GWAS), according to a threshold of $P < 5 \times 10^{-6}$ to fulfill assumption 1. Second, independent SNPs were screened, according to $R^2 < 0.001$ and $kb = 10000$, to avoid potential bias due to linkage disequilibrium. Third, the F -value of each SNP was calculated, and SNPs with $F \leq 10$ were excluded. F -value was calculated publicly as $F = [R^2 / (1 - R^2)] \times [(N - K - 1) / K]$, where $R^2 = 2 \times (1 - MAF) \times MAF \times \beta^2$. R^2 : The cumulative explained variance of the selected instrument variables on exposure; MAF: The effect of minor allele frequency; β : The estimated effect of SNP; and N : Sample size of the GWAS. Finally, we referred to PhenoScanner (www.phenoscanter.medschl.cam.ac.uk) and related literature to remove SNPs potentially associated with T2D to fulfill assumption 2.

Data analysis

This study followed the STROBE-MR guidelines[25]. The “TwoSampleMR (0.5.7)” program package for R 4.3.1 was used to perform the two-sample MR analysis. Inverse variance weighting (IVW), MR-Egger, and weighted median were used as basic causality assessment methods. Among these methods, IVW was the primary analysis method[26] that achieved unbiased causal estimation without horizontal pleiotropy. MR-Egger and the weighted median are complementary methods to MR analysis, with the former providing valid causal estimation in some cases where pleiotropy exists, and the latter being less sensitive to outliers and measurement errors.

The MR results were corrected and analyzed using the MR-Pleiotropy Residual Sum and Outlier method (MR-PRESSO), and the MR analysis was re-executed after removing outlier SNPs ($P < 1$). Horizontal pleiotropy was assessed using MR-Egger’s intercept analysis, and $P \geq 0.05$ suggested the absence of horizontal pleiotropy to fulfill assumption 3. Heterogeneity was assessed using Cochran’s Q test, and $P \geq 0.05$ suggested the absence of heterogeneity. Leave-one-out sensitivity analysis was used to assess the robustness of the results and clarify individual SNP that significantly affected the pooled results.

RESULTS

GWAS data for exposure factors

The VH data were obtained from FinnGen, which included 377277 European participants (dataset number: finngen_R9_AB1_VIRAL_HEPATITIS). Data on CHB were obtained from the BioBank Japan Project, which contains information on 212453 East Asians (dataset number: bbj-a-99). Data on CHC were obtained from the BioBank Japan Project, which contains information on 212453 East Asians (dataset number: bbj-a-101). Eighty-six SNPs closely related to VH were provided by FinnGen, 8719 closely associated with CHB, and 1494 closely related to CHC were supplied by the BioBank Japan Project. Eleven SNPs for VH, 14 for CHB, and 13 for CHC were included after excluding the effects of linkage disequilibrium and confounding variables (Supplementary Table 1). Duplicated and mismatched SNPs were excluded based on the EAF values when harmonizing the allelic orientations of the exposure and outcome SNPs. Outlier SNPs were excluded from MR-PRESSO correction analysis. Finally, 11 SNPs for VH, nine for CHB, and six for CHC were included (Supplementary Table 2).

GWAS data for outcome variables

The T2D data for Europe were obtained from FinnGen, including 365950 European participants (dataset number: finngen_R9_T2D). Data on T2D for East Asia were obtained from the European Bioinformatics Institute, and it included 433540 East Asian individuals (dataset number: ebi-a-GCST010118) (Table 1).

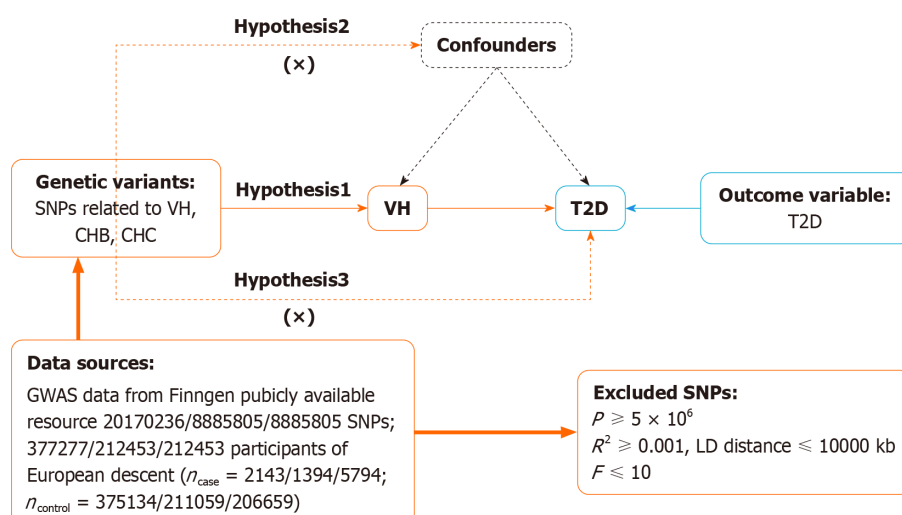
MR analysis results of two samples

The causal effects between the exposure factors (VH, CHB, and CHC) and outcome variable (T2D) were analyzed using two-sample MR. A forest plot of the MR analysis is shown in Figure 2, and a scatter plot of the effect estimates for each SNP is shown in Figure 3. The results of the intercept analysis are shown in Supplementary Table 3. The results of the heterogeneity test are shown in Figure 4 and Supplementary Table 4. The sensitivity analysis is shown in Figure 5.

Table 1 Details of the Genome-wide association studies included in the Mendelian randomization

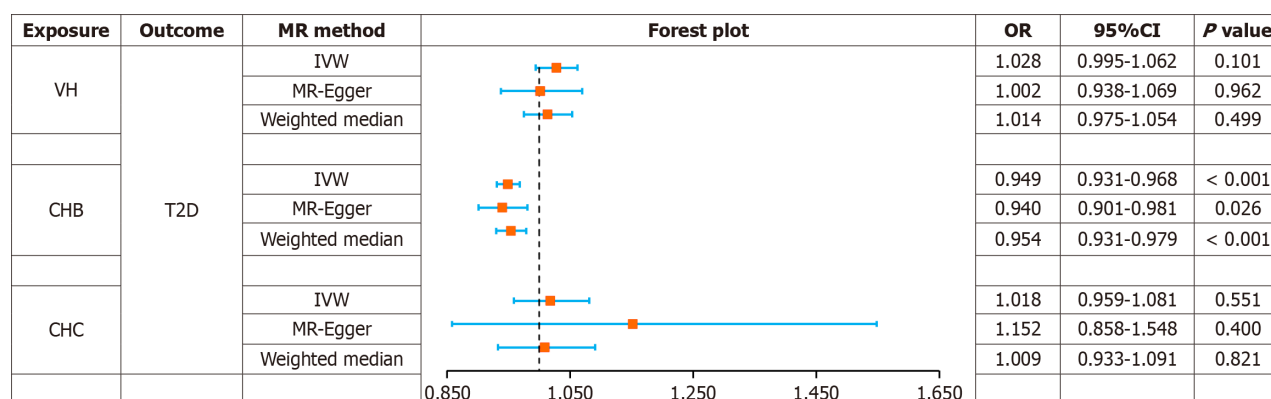
Year	Trait	Population	Sample size	Web source
2023	VH	European	377277	www.finngen.fi/en
2023	T2D	European	365950	www.finngen.fi/en
2019	CHB	East Asian	212453	https://biobankjp.org/en/
2019	CHC	East Asian	212453	https://biobankjp.org/en/
2020	T2D	East Asian	433540	https://www.ebi.ac.uk

VH: Viral hepatitis; CHB: Chronic hepatitis B; CHC: Chronic hepatitis C; T2D: Type 2 diabetes.



DOI: 10.4239/wjd.v15.i2.220 Copyright ©The Author(s) 2024.

Figure 1 Mendelian randomization design for causal analysis of viral hepatitis, chronic hepatitis B, chronic hepatitis C and type 2 diabetes. VH: Viral hepatitis; CHB: Chronic hepatitis B; CHC: Chronic hepatitis C; T2D: Type 2 diabetes; GWAS: Genome-wide association studies; SNP: Single nucleotide polymorphisms; LD: Linkage disequilibrium.



DOI: 10.4239/wjd.v15.i2.220 Copyright ©The Author(s) 2024.

Figure 2 Forest plot of Mendelian randomization analysis on the causal relationship between viral hepatitis, chronic hepatitis B, chronic hepatitis C and type 2 diabetes. VH: Viral hepatitis; CHB: Chronic hepatitis B; CHC: Chronic hepatitis C; T2D: Type 2 diabetes; OR: Odds ratio; SNP: Single nucleotide polymorphisms; MR: Mendelian randomization; CI: Confidence interval; IVW: Inverse variance weighting.

VH: None of the three methods of analysis showed significant causal relationships between VH and T2D in Europeans: IVW [odds ratio (OR) = 1.028; 95% confidence interval (CI): 0.995-1.062; $P = 0.101$], MR-Egger (OR = 1.002; 95%CI: 0.938-1.069; $P = 0.962$), or weighted median (OR = 1.014; 95%CI: 0.975-1.054; $P = 0.499$). Intercept analysis showed no horizontal pleiotropy ($P = 0.391$). Cochran's Q test showed no heterogeneity ($P = 0.119$). Sensitivity analysis suggested that the

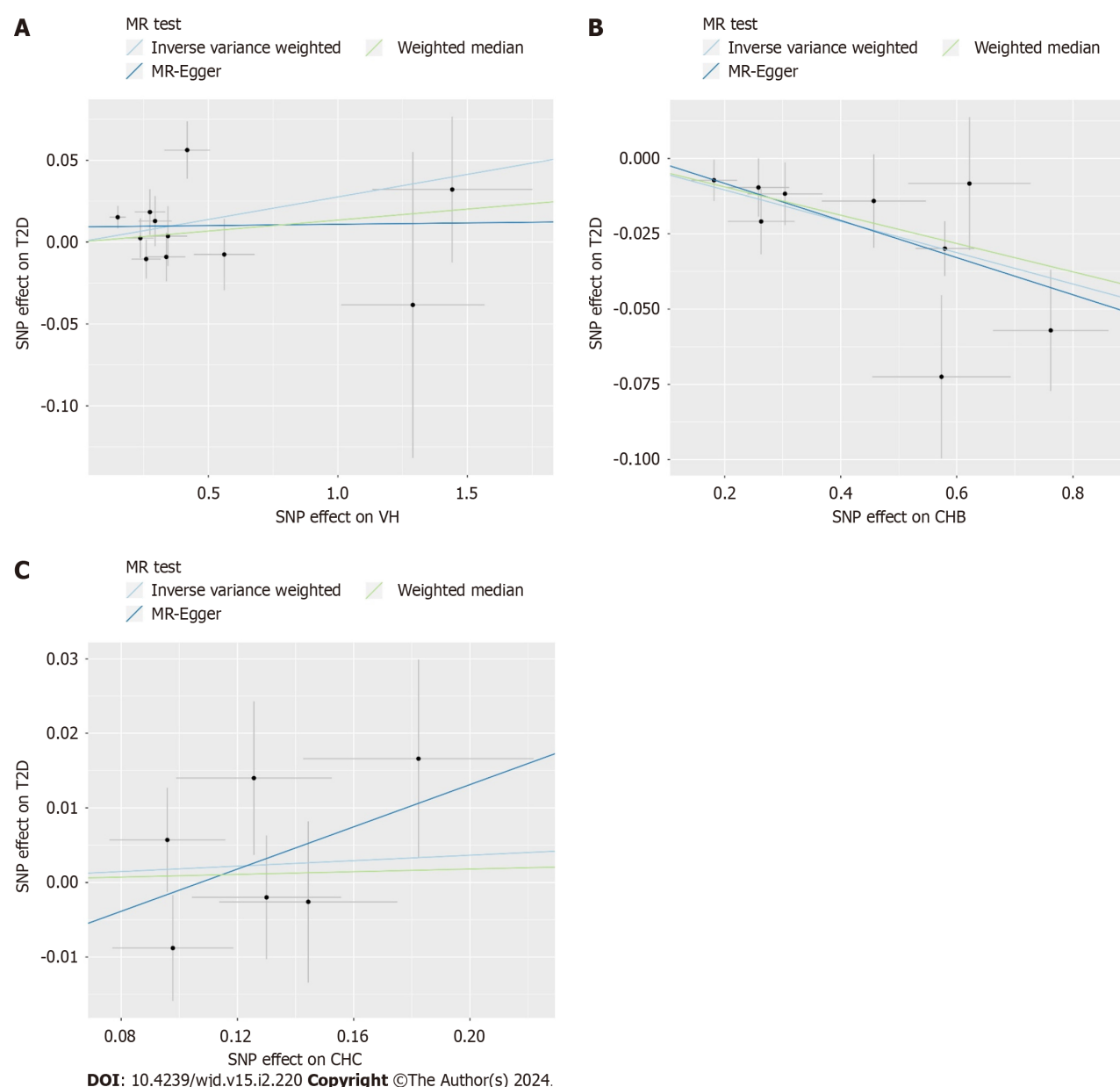


Figure 3 Scatter plot of Mendelian randomization analysis on the causal relationship between viral hepatitis, chronic hepatitis B, chronic hepatitis C and type 2 diabetes. A: Viral hepatitis on type 2 diabetes; B: Chronic hepatitis B on type 2 diabetes; C: Chronic hepatitis C on type 2 diabetes. VH: Viral hepatitis; CHB: Chronic hepatitis B; CHC: Chronic hepatitis C; T2D: Type 2 diabetes; MR: Mendelian randomization.

results were robust.

CHB: All the three methods of analysis showed a negative causal association between CHB and T2D among East Asian individuals: IVW (OR = 0.949; 95%CI: 0.931-0.968; $P < 0.001$), MR-Egger (OR = 0.940; 95%CI: 0.901-0.981; $P = 0.026$), and weighted median (OR = 0.954; 95%CI: 0.931-0.979; $P < 0.001$). Intercept analysis showed no horizontal pleiotropy ($P = 0.640$). The Cochran's Q test revealed no heterogeneity ($P = 0.685$). Sensitivity analysis suggested that the results were robust.

CHC: None of the three analysis methods showed a significant causal relationship between CHC and T2D in East Asians: IVW (OR = 1.018; 95%CI: 0.959-1.081, $P = 0.551$), MR-Egger (OR = 1.152; 95%CI: 0.858-1.548, $P = 0.400$), and weighted median (OR = 1.009; 95%CI: 0.933-1.091, $P = 0.821$). Intercept analysis showed no horizontal pleiotropy ($P = 0.640$). The Cochran's Q test showed no heterogeneity ($P = 0.376$), and the sensitivity analysis suggested that the results were robust.

DISCUSSION

VH is an inflammatory liver disease caused by viruses, such as HAV, HBV, HCV, HDV, and HEV, and is one of the most

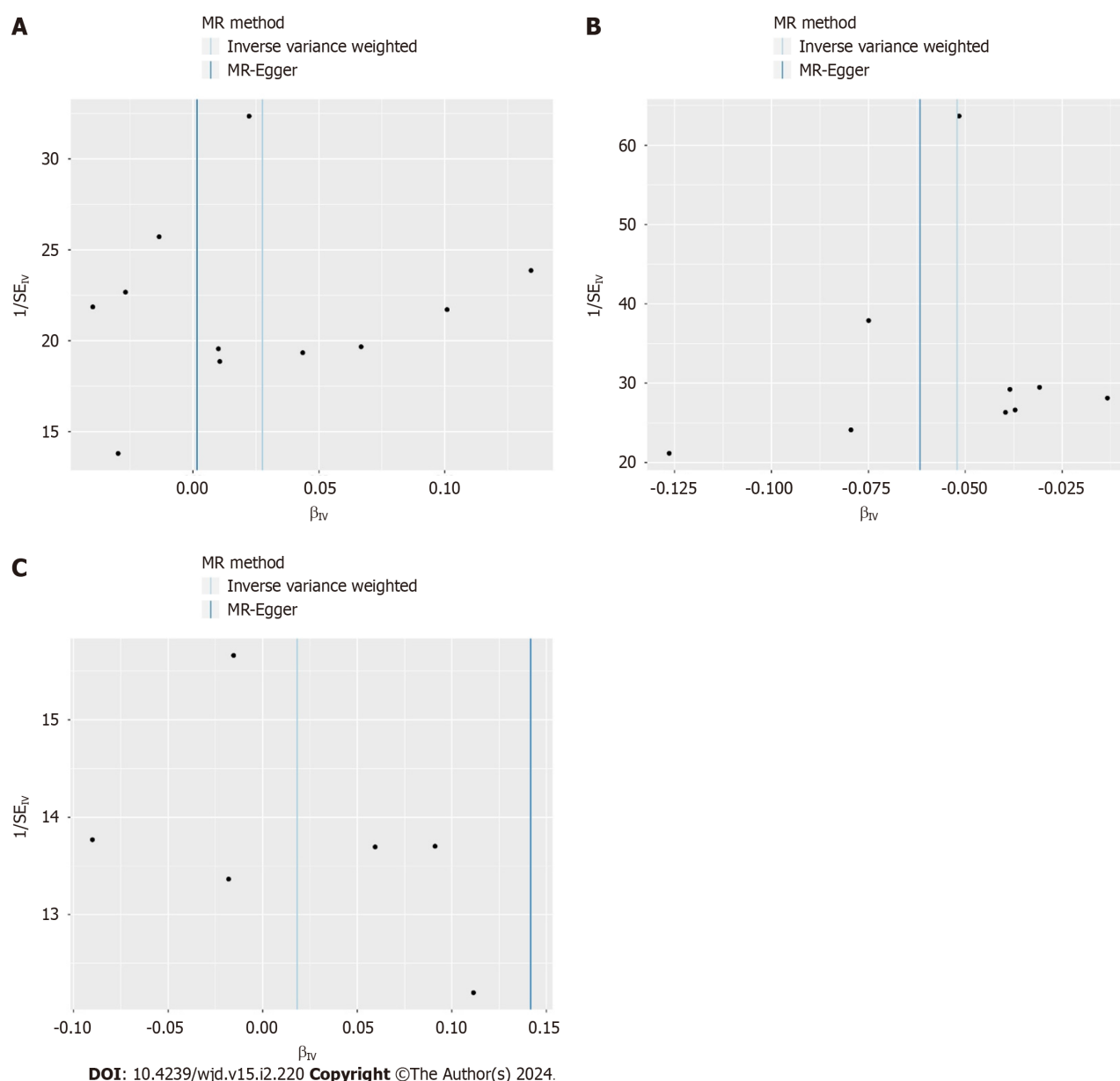


Figure 4 Funnel plot of heterogeneity analysis on viral hepatitis, chronic hepatitis B, chronic hepatitis C and type 2 diabetes. A: Viral hepatitis on type 2 diabetes; B: Chronic hepatitis B on type 2 diabetes; C: Chronic hepatitis C on type 2 diabetes. MR: Mendelian randomization.

common liver diseases[27]. Some evidence suggests that HBV and HCV infection are associated with impaired glucose tolerance and increased incidence of diabetes mellitus[28,29], which are potential risk factors for T2D. However, other studies have found that neither HBV nor HCV infections are associated with T2D risk[20,30]. The effects of HBV and HCV infections on T2D remain controversial, and their causal relationship remains unclear. To further understand the potential impact of different types of VH on T2D, MR was used to analyze the causal relationships of VH, CHB, and CHC with T2D.

This study found no significant causal association between VH and T2D risk in the European population. Among East Asians, CHB was associated with a lower risk of T2D, whereas CHC was not associated with a risk of T2D. The Cochrane's Q-test and intercept analysis showed no heterogeneity or horizontal pleiotropy in these results, and the sensitivity analysis showed that the MR results were robust. As the GWAS did not include data on HAV, HDV, and HEV infections, this study did not assess the effect of these three types of VH on the risk of T2D. Additionally, the impact of CHB and CHC on T2D among Europeans is still being determined because GWAS do not contain available data on CHB and CHC in Europeans.

Our results showed that CHC was not associated with T2D risk, which is consistent with previous reports. A United States clinical trial, involving 15125 individuals found that neither the prevalence of prediabetes nor diabetes was associated with HCV infection, and the level of insulin resistance was not associated with HCV markers[20]. Additionally, an Iranian case-control study noted that CHC was not a risk factor for insulin resistance or diabetes in the Iranian population[31].

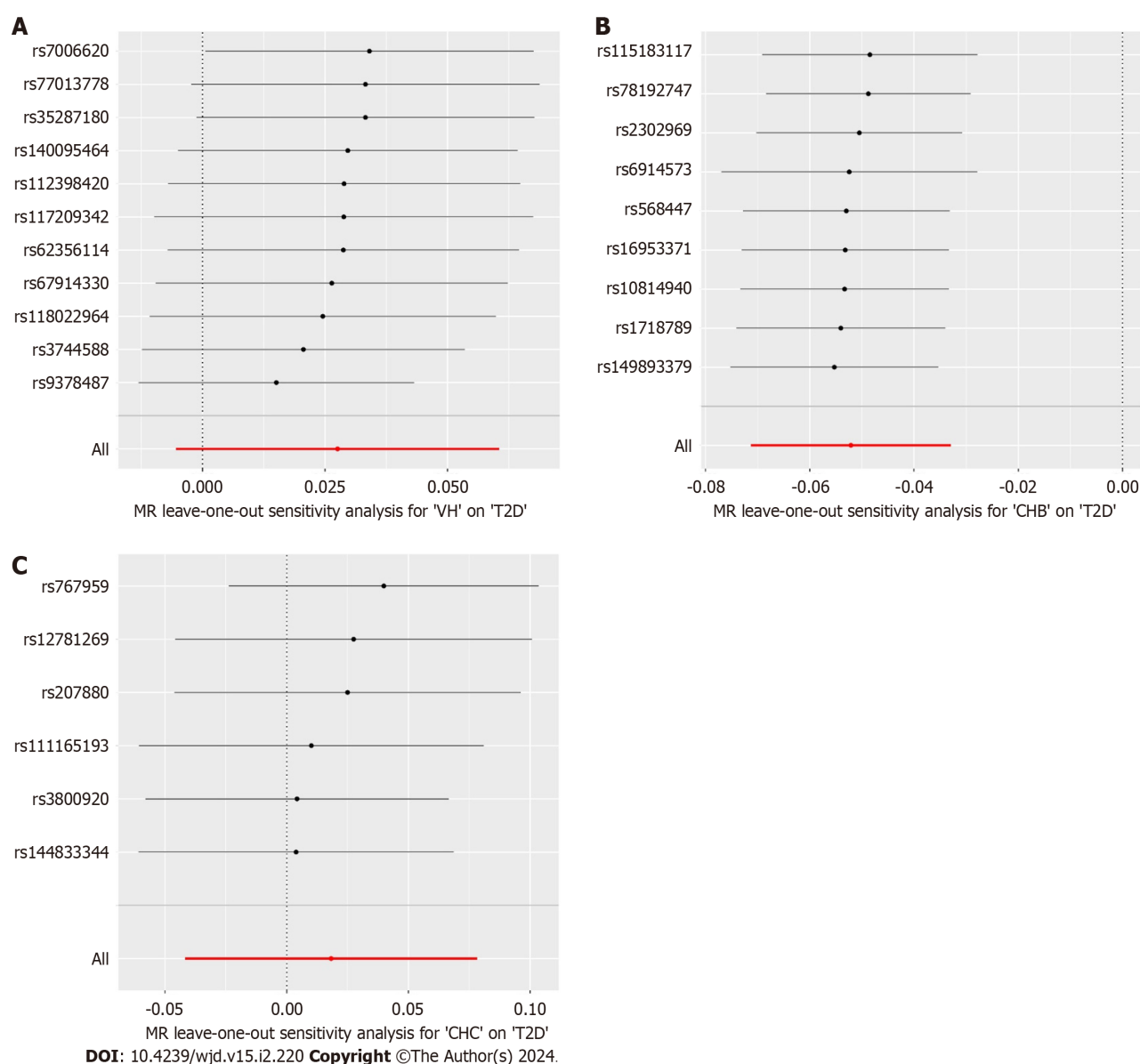


Figure 5 The results of leave-one-out sensitivity analysis on viral hepatitis, chronic hepatitis B, chronic hepatitis C and type 2 diabetes. A: Viral hepatitis on type 2 diabetes; B: Chronic hepatitis B on type 2 diabetes; C: Chronic hepatitis C on type 2 diabetes. VH: Viral hepatitis; CHB: Chronic hepatitis B; CHC: Chronic hepatitis C; T2D: Type 2 diabetes.

However, studies supporting the notion that CHC is not associated with T2D are few, and to date, most clinical studies have pointed to a correlation between CHC and T2D. Mehta *et al*[17] suggested that CHC is a potential risk factor for T2D, and they found a higher risk of T2D in patients with CHC than that in healthy individuals. An Italian single-arm trial noted that a significant effect of HCV on glucose load developed through increased insulin resistance in the liver and muscles[32]. The impact of HCV on blood glucose levels and risk of diabetes was more pronounced in patients aged 35-49 years and in those with severe liver disease[33]. The risk for T2D in patients with CHC has been reported to increase with increasing levels of liver fibrosis[34,35]. Additionally, there is evidence that patients with CHC infected with HCV1b and HCV3 have a higher incidence of T2D[36,37], implying that the HCV genotype is an essential factor influencing the risk of T2D. These results suggest that HCV increases the risk of developing T2D by affecting insulin sensitivity, and that this association is related to the degree of liver fibrosis and HCV genotype. Therefore, HCV eradication may help reduce blood glucose levels and T2D risk. Gilad *et al*[38] and Hussein *et al*[39] found that diabetic patients coinfecting with HCV who were treated with direct-acting antiviral agents (DAAs) had significant improvements in glycosylated hemoglobin levels and insulin resistance, as well as a substantial reduction in diabetes-related microvascular complications[40]. Two meta-analyses have shown that DAAs restore HCV-induced alterations in glucose homeostasis by inducing a sustained virological response, thereby reducing insulin resistance and T2D risk[41,42]. These findings indicate that anti-HCV therapy benefits patients with T2D, and provide indirect evidence that CHC is a risk factor for T2D.

Although considerable evidence points to CHC as a potential risk factor for T2D, this MR analysis, based on genetic prediction, did not reveal a causal relationship between them. The MR analysis and clinical trial results differed, possibly because of intermediate factors between CHC and T2D. Ruhl *et al*[20] stated that diabetes risk is associated with elevated alanine aminotransferase and gamma-glutamyltransferase activities rather than HCV infection status. The authors

suggested that the association between HCV infection and T2D reported in previous studies was related to elevated liver enzyme[20]. Related studies have shown that insulin resistance in individuals infected with HCV is associated with alterations in alanine transaminase, aspartate aminotransferase, and bilirubin levels[43]. Papatheodoridis *et al*[44] found that the risk of T2D in HCV-infected individuals was associated with hepatic fibrosis, cirrhosis, hepatic steatosis, and increased serum triglyceride levels.

Additionally, researchers have observed that HCV infection increases the risk of obesity and metabolic syndrome (MS) by affecting the liver. In a clinical study in Virginia, Younossi *et al*[45] found that HCV genotype three was associated with an increased risk of steatosis and fatty liver disease. A Taiwanese study has shown that HCV regulates host lipid metabolism and distribution to some extent[46]. Another Taiwanese study showed that the prevalence of MS was higher in individuals infected with HCV than that in non-infected patients (24.7% *vs* 13.2%)[47]. The effects of HCV infection on obesity and MS may be mediated through the promotion of hepatic steatosis and fibrosis. Hepatitis C core viral proteins in patients with HCV, especially in genotype 3a-infected patients, induced sterol regulatory element-binding protein 1 and peroxisome proliferator-activated receptor γ gene expression and activity, thereby increasing the transcription of genes involved in hepatic fatty acid synthesis, and ultimately promoting steatosis[48]. Hepatitis C core viral proteins, in turn, mediate oxidative stress, promote the expression of inflammatory factors, such as tumor necrosis factor- α , interleukin (IL)-6, and IL-8, and aggravate the degree of hepatic fibrosis, which exacerbates insulin resistance[49,50]. Insulin resistance plays a vital role in MS[47]. This evidence suggests that HCV may affect glucose metabolic homeostasis and increase the risk of T2D through intermediate pathways, such as hepatic steatosis, hepatic fibrosis, and cirrhosis. However, due to the assumption of the exclusivity of MR, SNPs associated with known risk factors for T2D, such as fatty liver, liver fibrosis, and cirrhosis, were excluded as confounding factors, which may be the main reason for the negative MR results.

This study suggests that CHB infection is associated with a reduced risk of T2D, which differs from the results of most clinical studies. Current studies support the notion that HBV infection is not an independent risk factor of T2D[19]. A Taiwanese study involving 1233 individuals found no significant differences in the prevalence of diabetes and glucose intolerance between asymptomatic chronic HBV-infected individuals and a non-HBV control group[30]. This is similar to the findings of another Taiwanese study that concluded that HBV itself does not confer a predisposition to diabetes[51]. Liu *et al*[52] supported this view from a serological perspective as they found that the serological status of HBV antigen (HBsAg) and hepatitis B surface antibody (HBsAb) was not associated with diabetes. Moreover, HBV infection did not increase the risk of macrovascular complications in diabetes mellitus[53].

Although most of the current literature suggests that CHB is not associated with T2D risk, some studies support CHB as a potential protective factor against T2D. A study of retired Chinese women showed that a HBsAb-positive status was associated with better metabolic status and a lower incidence of diabetes mellitus[54]. Another study found that a high HBV load is associated with a reduced risk of hepatic steatosis, a mechanism by which HBV reduces the risk of T2D[55]. This implies that a high HBV load may be an element of the reduced risk of T2D in patients with CHB rather than HBsAb positivity alone. However, most patients with CHB are treated with antiviral drugs, including tenofovir or entecavir, which reduce the HBV load in the body. As the viral load decreases, the role of HBV in regulating fat metabolism and reducing the risk of diabetes is significantly diminished, which may be the main reason why the results of this MR analysis differ from those of clinical studies.

The potential protective effects of HBV infection against obesity and MS provide indirect evidence that supports our findings. A cross-sectional study in China showed that the prevalence of MS was significantly lower in patients infected with HBV than that in non-infected patients (11.64% *vs* 12.66%)[56]. A Taiwanese clinical study included 3587 patients with HBV infection without cirrhosis and found that high HBV viral load was associated with a reduced risk of extreme obesity (OR = 0.30; 95%CI: 0.13-0.68) and centripetal obesity (OR = 0.53; 95%CI: 0.34-0.82)[57]. HBV infection may reduce the risk of hepatic steatosis by modulating lipid metabolism, which in turn reduces the risk of obesity and MS. A meta-analysis showed that the prevalence of steatosis was lower in CHB than that in the general population (OR = 0.81; 95%CI: 0.71-0.920)[58]. Another study reported that the prevalence of non-alcoholic fatty liver disease was lower in patients with HBV infection than that in non-infected patients[59]. A clinical study in Taiwan further showed that patients with positive HBsAg possessed lower hypertriglyceridemia (OR = 0.59; 95%CI: 0.52-0.66) and low-density lipoprotein-cholesterol levels (OR = 0.86; 95%CI: 0.79-0.93) than those with negative HBsAg[60]. Considering that steatosis is an essential factor that leads to the progressive impairment of glucose metabolism[61], the role of HBV in regulating hepatic lipid metabolism also contributes to the regulation of glucose metabolic homeostasis. This evidence suggests that HBV infection is associated with a lower risk of obesity and MS, and that the primary mechanism may be the modulation of hepatic fat metabolism, which corroborates our view.

Notably, the risk of T2D increases when CHB progresses to cirrhosis. A meta-analysis of 15 clinical studies showed that the incidence of diabetes was comparable between patients with non-cirrhotic CHB and those with asymptomatic HBV carriers and non-HBV[11]. In contrast, patients with hepatitis B cirrhosis had a significantly increased risk of T2D (OR = 1.99; 95%CI: 1.08-3.65)[11]. Epidemiological studies showed that only 2%-4% of patients infected with HBV each year worldwide will develop compensated cirrhosis, and only 1.5%-4% of compensated cirrhosis will further develop into decompensated cirrhosis[62]. Therefore, most patients with CHB do not have compensated or decompensated cirrhosis, which may explain why most clinical studies have not found an association between CHB and T2D. In summary, CHB is associated with a reduced risk of T2D; however, this association is limited by HBV load and cirrhosis. It weakens or disappears when patients with CHB receive antiviral therapy, and reverses when CHB progresses to cirrhosis.

Few studies have investigated the relationship between T2D and other VH, such as hepatitis A, D, and E. Lin *et al*[63] found that HAV infection was associated with an increased risk of diabetes (OR = 1.13; 95%CI: 1.08-1.18). However, HAV vaccination and successful HAV immunization were not associated with the risk of diabetes; therefore, they concluded that HAV infection was unlikely to cause diabetes[63]. Zitelli *et al*[64] found that among patients with chronic HCV

infection receiving antiviral therapy, the incidence of diabetes was 3.65 times higher in HEV-positive patients than that in HEV-negative patients, suggesting that HEV is a potential risk factor for diabetes mellitus in chronic HCV-infected individuals. In summary, there are insufficient studies elucidating the effects of hepatitis caused by HAV, HDV, and HEV infections on T2D, and this issue needs to be further explored in subsequent studies.

Our study has some limitations. First, the data on CHB and CHC were derived from East Asians; therefore, the results mainly illustrate the effect of CHB and CHC on T2D among East Asians, and it is not yet clear how they affect other races. Second, the GWAS only provided an overall dataset on VH among Europeans with availability; it did not include a dataset of different types of VH. Therefore, the results of this study can only infer that VH is not associated with T2D risk in Europeans, and cannot explain the effects of different types of VH on T2D risk among Europeans. Third, data on HAV, HDV, and HEV were unavailable in the GWAS; therefore, their effects on T2D risk were not assessed. Fourth, our data were derived from the GWAS; therefore, it was impossible to stratify the analysis for populations with different viral loads. Given these limitations, we expect future studies to improve. First, we recommend continuing to promote human genome studies worldwide, and provide more comprehensive data for MR analysis of different races. Second, we recommend conducting stratified randomized controlled trials to explore the specific effects of the different types, stages, and viral loads of VH on T2D.

CONCLUSION

This MR analysis showed that neither VH among Europeans nor CHC among East Asians were associated with T2D risk, whereas CHB was associated with reduced T2D risk among East Asians. Although VH among Europeans and CHC among East Asians are not associated with T2D risk, focusing on blood glucose in patients with CHC is still relevant for the early detection of T2D induced by CHC-mediated pathways of hepatic steatosis, liver fibrosis, and cirrhosis. Further studies are needed to explore the causal relationships and mechanisms between different types of VH and T2D.

ARTICLE HIGHLIGHTS

Research background

The causality between viral hepatitis (VH) and type 2 diabetes (T2D) remains unclear.

Research motivation

In this study, a Mendelian randomization (MR) analysis was applied to determine the causality between VH and T2D from genome-wide association study data.

Research objectives

We used a MR to identify the causality between VH, chronic hepatitis B (CHB), chronic hepatitis C (CHC) and T2D from genome-wide association study data.

Research methods

Two-sample MR was performed to obtain the causality between VH, CHB, CHC and T2D. Summary statistics from the FinnGen were used for VH, BioBank Japan Project was used for CHB and CHC, and the European Bioinformatics Institute and FinnGen were utilized for T2D.

Research results

The MR analysis showed no significant causal relationship between VH and T2D in Europeans [odds ratio (OR) = 1.028; 95% confidence interval (CI): 0.995-1.062, $P = 0.101$] as well as between CHC and T2D in East Asians (OR = 0.949; 95%CI: 0.931-0.968, $P < 0.001$), while there was a negative causal association between CHB and T2D among East Asians (OR = 0.949; 95%CI: 0.931-0.968, $P < 0.001$). These MR analysis results showed no horizontal pleiotropy or heterogeneity ($P > 0.05$), and they were robust.

Research conclusions

Among East Asians, CHB is associated with a reduced T2D risk, but this association is limited by hepatitis B virus (HBV) load and cirrhosis. Although CHC among East Asians are not associated with the risk of T2D, focusing on blood glucose in patients with CHC is still relevant for the early detection of T2D induced by CHC-mediated pathways of hepatic steatosis, liver fibrosis, and cirrhosis.

Research perspectives

Whether different categories of VH, especially CHB and CHC, are associated with the risk of T2D remains controversial. CHB is associated with a reduced T2D risk among East Asians, but this association is limited by HBV load and cirrhosis. Although VH among Europeans and CHC among East Asians are not associated with T2D risk, focusing on blood glucose in patients with CHC is still relevant for the early detection of T2D induced by CHC-mediated pathways of hepatic steatosis, liver fibrosis, and cirrhosis.

FOOTNOTES

Co-first authors: Yun-Feng Yu and Gang Hu.

Author contributions: Yu YF conceived and designed the study; Yu YF and Hu G participated in data processing and statistical analysis; Yu YF, Hu G, Yang XY, and Wu JY drafted the manuscript; Hu G, Yang XY, Wu JY, and Yu R contributed to data analysis and interpretation; Yu YF, Tong KK, Yang XY, and Yu R supervised the review of the study; and all authors seriously revised and approved the final manuscript.

Supported by National Natural Science Foundation of China, No. U21A20411.

Institutional review board statement: Despite our study was an original research, this work just used genome-wide association studies statistics from public available databases for Mendelian randomization analysis, and we did not collect any new human data. As this study did not involve any human studies and/or animal experiments, the institutional review board approval was not required for our research.

Informed consent statement: Despite our study was an original research, this work just used genome-wide association studies statistics from public available databases for Mendelian randomization analysis, and we did not collect any new human data. As this study did not involve any human studies and/or animal experiments, the informed consent form was not required for our research.

Conflict-of-interest statement: All the authors report no relevant conflicts of interest for this article.

Data sharing statement: All GWAS data that support the findings of this study are openly available in the BioBank Japan Project (<https://biobankjp.org/en/>), European Bioinformatics Institute (<https://www.ebi.ac.uk>), and FinnGen (www.finnngen.fi).

Open-Access: This article is an open-access article that was selected by an in-house editor and fully peer-reviewed by external reviewers. It is distributed in accordance with the Creative Commons Attribution NonCommercial (CC BY-NC 4.0) license, which permits others to distribute, remix, adapt, build upon this work non-commercially, and license their derivative works on different terms, provided the original work is properly cited and the use is non-commercial. See: <https://creativecommons.org/licenses/by-nc/4.0/>

Country/Territory of origin: China

ORCID number: Yun-Feng Yu 0000-0002-7309-5608; Gang Hu 0000-0002-6252-0082; Ke-Ke Tong 0000-0001-6852-3914; Xin-Yu Yang 0000-0001-6124-9166; Jing-Yi Wu 0009-0000-1093-9327; Rong Yu 0009-0005-0840-2797.

S-Editor: Wang JJ

L-Editor: A

P-Editor: Zheng XM

REFERENCES

- Sheng CY, Son YH, Jang J, Park SJ. In vitro skeletal muscle models for type 2 diabetes. *Biophys Rev (Melville)* 2022; **3**: 031306 [PMID: 36124295 DOI: 10.1063/5.0096420]
- Majety P, Lozada Orquera FA, Edem D, Hamdy O. Pharmacological approaches to the prevention of type 2 diabetes mellitus. *Front Endocrinol (Lausanne)* 2023; **14**: 1118848 [PMID: 36967777 DOI: 10.3389/fendo.2023.1118848]
- Cho NH, Shaw JE, Karuranga S, Huang Y, da Rocha Fernandes JD, Ohlrogge AW, Malanda B. IDF Diabetes Atlas: Global estimates of diabetes prevalence for 2017 and projections for 2045. *Diabetes Res Clin Pract* 2018; **138**: 271-281 [PMID: 29496507 DOI: 10.1016/j.diabres.2018.02.023]
- Zhang Y, Zhou H. Hyper-reactive platelets and type 2 diabetes. *Zhong Nan Da Xue Xue Bao Yi Xue Ban* 2022; **47**: 374-383 [PMID: 35545331 DOI: 10.11817/j.issn.1672-7347.2022.210271]
- Afsar B, Elsurur R. Increased renal resistive index in type 2 diabetes: Clinical relevance, mechanisms and future directions. *Diabetes Metab Syndr* 2017; **11**: 291-296 [PMID: 27594114 DOI: 10.1016/j.dsx.2016.08.019]
- Calles-Escandon J, Garcia-Rubi E, Mirza S, Mortensen A. Type 2 diabetes: one disease, multiple cardiovascular risk factors. *Coron Artery Dis* 1999; **10**: 23-30 [PMID: 10196684]
- Park KS. Prevention of type 2 diabetes mellitus from the viewpoint of genetics. *Diabetes Res Clin Pract* 2004; **66** Suppl 1: S33-S35 [PMID: 15563977 DOI: 10.1016/j.diabres.2003.11.023]
- Pfohl M, Schatz H. Strategies for the prevention of type 2 diabetes. *Exp Clin Endocrinol Diabetes* 2001; **109** Suppl 2: S240-S249 [PMID: 11460574 DOI: 10.1055/s-2001-18585]
- Alzahrani N. Hepatitis C virus, insulin resistance, and diabetes: A review. *Microbiol Immunol* 2022; **66**: 453-459 [PMID: 35941761 DOI: 10.1111/1348-0421.13023]
- Ciardullo S, Mantovani A, Ciaccio A, Carbone M, Invernizzi P, Perseghin G. Hepatitis C virus infection and diabetes: A complex bidirectional relationship. *Diabetes Res Clin Pract* 2022; **187**: 109870 [PMID: 35398458 DOI: 10.1016/j.diabres.2022.109870]
- Zhang J, Shen Y, Cai H, Liu YM, Qin G. Hepatitis B virus infection status and risk of type 2 diabetes mellitus: A meta-analysis. *Hepatol Res* 2015; **45**: 1100-1109 [PMID: 25601609 DOI: 10.1111/hepr.12481]
- Nagra N, Kozarek RA, Burman BE. Therapeutic Advances in Viral Hepatitis A-E. *Adv Ther* 2022; **39**: 1524-1552 [PMID: 35220557 DOI: 10.1007/s12325-022-02070-z]

- 13 Liou JW, Mani H, Yen JH. Viral Hepatitis, Cholesterol Metabolism, and Cholesterol-Lowering Natural Compounds. *Int J Mol Sci* 2022; **23** [PMID: 35409259 DOI: 10.3390/ijms23073897]
- 14 Farci P, Niro GA, Zamboni F, Diaz G. Hepatitis D Virus and Hepatocellular Carcinoma. *Viruses* 2021; **13** [PMID: 34064419 DOI: 10.3390/v13050830]
- 15 Lanini S, Ustianowski A, Pisapia R, Zumla A, Ippolito G. Viral Hepatitis: Etiology, Epidemiology, Transmission, Diagnostics, Treatment, and Prevention. *Infect Dis Clin North Am* 2019; **33**: 1045-1062 [PMID: 31668190 DOI: 10.1016/j.idc.2019.08.004]
- 16 Leoni S, Casabianca A, Biagioni B, Serio I. Viral hepatitis: Innovations and expectations. *World J Gastroenterol* 2022; **28**: 517-531 [PMID: 35316960 DOI: 10.3748/wjg.v28.i5.517]
- 17 Mehta SH, Brancati FL, Strathdee SA, Pankow JS, Netski D, Coresh J, Szklo M, Thomas DL. Hepatitis C virus infection and incident type 2 diabetes. *Hepatology* 2003; **38**: 50-56 [PMID: 12829986 DOI: 10.1053/jhep.2003.50291]
- 18 Bernsmeier C, Calabrese D, Heim MH, Duong HT. Hepatitis C virus dysregulates glucose homeostasis by a dual mechanism involving induction of PGC1 α and dephosphorylation of FoxO1. *J Viral Hepat* 2014; **21**: 9-18 [PMID: 24329853 DOI: 10.1111/jvh.12208]
- 19 Shen Y, Zhang S, Wang X, Wang Y, Zhang J, Qin G, Li W, Ding K, Zhang L, Liang F. Comparison of type 2 diabetes mellitus incidence in different phases of hepatitis B virus infection: A meta-analysis. *Liver Int* 2017; **37**: 1451-1460 [PMID: 27753241 DOI: 10.1111/liv.13275]
- 20 Ruhl CE, Menke A, Cowie CC, Everhart JE. Relationship of hepatitis C virus infection with diabetes in the U.S. population. *Hepatology* 2014; **60**: 1139-1149 [PMID: 24500979 DOI: 10.1002/hep.27047]
- 21 Gao RC, Sang N, Jia CZ, Zhang MY, Li BH, Wei M, Wu GC. Association Between Sleep Traits and Rheumatoid Arthritis: A Mendelian Randomization Study. *Front Public Health* 2022; **10**: 940161 [PMID: 35844889 DOI: 10.3389/fpubh.2022.940161]
- 22 Julian TH, Boddy S, Islam M, Kurz J, Whittaker KJ, Moll T, Harvey C, Zhang S, Snyder MP, McDermott C, Cooper-Knock J, Shaw PJ. A review of Mendelian randomization in amyotrophic lateral sclerosis. *Brain* 2022; **145**: 832-842 [PMID: 34791088 DOI: 10.1093/brain/awab420]
- 23 Ference BA, Holmes MV, Smith GD. Using Mendelian Randomization to Improve the Design of Randomized Trials. *Cold Spring Harb Perspect Med* 2021; **11** [PMID: 33431510 DOI: 10.1101/cshperspect.a040980]
- 24 Davies NM, Holmes MV, Davey Smith G. Reading Mendelian randomisation studies: a guide, glossary, and checklist for clinicians. *BMJ* 2018; **362**: k601 [PMID: 30002074 DOI: 10.1136/bmj.k601]
- 25 Burgess S, Butterworth A, Thompson SG. Mendelian randomization analysis with multiple genetic variants using summarized data. *Genet Epidemiol* 2013; **37**: 658-665 [PMID: 24114802 DOI: 10.1002/gepi.21758]
- 26 1000 Genomes Project Consortium, Auton A, Brooks LD, Durbin RM, Garrison EP, Kang HM, Korbel JO, Marchini JL, McCarthy S, McVean GA, Abecasis GR. A global reference for human genetic variation. *Nature* 2015; **526**: 68-74 [PMID: 26432245 DOI: 10.1038/nature15393]
- 27 Bender D, Glitscher M, Hildt E. [Viral hepatitis A to E: prevalence, pathogen characteristics, and pathogenesis]. *Bundesgesundheitsblatt Gesundheitsforschung Gesundheitsschutz* 2022; **65**: 139-148 [PMID: 34932130 DOI: 10.1007/s00103-021-03472-0]
- 28 Kukla M, Piotrowski D, Waluga M, Hartleb M. Insulin resistance and its consequences in chronic hepatitis C. *Clin Exp Hepatol* 2015; **1**: 17-29 [PMID: 28856251 DOI: 10.5114/ceh.2015.51375]
- 29 Wu D. Correlation of viral load of Hepatitis B with the gestation period and the development of diabetes mellitus. *Saudi J Biol Sci* 2019; **26**: 2022-2025 [PMID: 31889788 DOI: 10.1016/j.sjbs.2019.08.009]
- 30 Huang ZS, Huang TS, Wu TH, Chen MF, Hsu CS, Kao JH. Asymptomatic chronic hepatitis B virus infection does not increase the risk of diabetes mellitus: a ten-year observation. *J Gastroenterol Hepatol* 2010; **25**: 1420-1425 [PMID: 20659233 DOI: 10.1111/j.1440-1746.2010.06268.x]
- 31 Eshraghian K, Lankarani KB, Fattahi MR, Esmailnejad A, Peymani P. Low Prevalence of Insulin Resistance Among Iranian Patients with Chronic Hepatitis C Virus Infection: A Case-Control Study. *Curr Diabetes Rev* 2018; **14**: 446-450 [PMID: 28714382 DOI: 10.2174/1573399813666170714164446]
- 32 Gualerzi A, Bellan M, Smirne C, Tran Minh M, Rigamonti C, Burlone ME, Bonometti R, Bianco S, Re A, Favretto S, Bellomo G, Minisini R, Carnevale Schianca GP, Pirisi M. Improvement of insulin sensitivity in diabetic and non diabetic patients with chronic hepatitis C treated with direct antiviral agents. *PLoS One* 2018; **13**: e0209216 [PMID: 30571711 DOI: 10.1371/journal.pone.0209216]
- 33 Wang CS, Wang ST, Yao WJ, Chang TT, Chou P. Community-based study of hepatitis C virus infection and type 2 diabetes: an association affected by age and hepatitis severity status. *Am J Epidemiol* 2003; **158**: 1154-1160 [PMID: 14652300 DOI: 10.1093/aje/kwg259]
- 34 Fabiani S, Fallahi P, Ferrari SM, Miccoli M, Antonelli A. Hepatitis C virus infection and development of type 2 diabetes mellitus: Systematic review and meta-analysis of the literature. *Rev Endocr Metab Disord* 2018; **19**: 405-420 [PMID: 29322398 DOI: 10.1007/s11154-017-9440-1]
- 35 Drazilova S, Janicko M, Skladany L, Kristian P, Oltman M, Szantova M, Krkoska D, Mazuchova E, Piesecka L, Vahalova V, Rac M, Schreter I, Virag L, Koller T, Liptakova A, Ondrasova M, Jarcuska P. Glucose Metabolism Changes in Patients with Chronic Hepatitis C Treated with Direct Acting Antivirals. *Can J Gastroenterol Hepatol* 2018; **2018**: 6095097 [PMID: 30402450 DOI: 10.1155/2018/6095097]
- 36 Memon MS, Arain ZI, Naz F, Zaki M, Kumar S, Burney AA. Prevalence of type 2 diabetes mellitus in hepatitis C virus infected population: a Southeast Asian study. *J Diabetes Res* 2013; **2013**: 539361 [PMID: 23984431 DOI: 10.1155/2013/539361]
- 37 Zhao P, Wang JB, Jiao J. [Investigation on the incidence of diabetes in chronic hepatitis C patients and their HCV genotypes]. *Zhonghua Gan Zang Bing Za Zhi* 2006; **14**: 86-88 [PMID: 16494773]
- 38 Gilad A, Fricker ZP, Hsieh A, Thomas DD, Zahorian T, Nunes DP. Sustained Improvement in Type 2 Diabetes Mellitus is Common After Treatment of Hepatitis C Virus With Direct-acting Antiviral Therapy. *J Clin Gastroenterol* 2019; **53**: 616-620 [PMID: 30614943 DOI: 10.1097/MCG.0000000000001168]
- 39 Hussein HA, Allam AS, Moaty ASA. Evaluation of Glycated Haemoglobin (HbA1c) Level in Type 2 Diabetic Chronic HCV Non-cirrhotic Treatment-Naïve Egyptian Patients Eradicated with Sofosbuvir Plus Daclatasvir. *Curr Diabetes Rev* 2020; **16**: 165-170 [PMID: 31146663 DOI: 10.2174/1573399815666190531091128]
- 40 Shiffman ML, Gunn NT. Impact of hepatitis C virus therapy on metabolism and public health. *Liver Int* 2017; **37** Suppl 1: 13-18 [PMID: 28052632 DOI: 10.1111/liv.13282]
- 41 Sacco M, Saracco GM. The impact of direct-acting antiviral treatment on glycemic homeostasis in patients with chronic hepatitis C. *Minerva Gastroenterol (Torino)* 2021; **67**: 264-272 [PMID: 33856147 DOI: 10.23736/S2724-5985.21.02835-X]
- 42 Ribaldone DG, Sacco M, Saracco GM. The Effect of Viral Clearance Achieved by Direct-Acting Antiviral Agents on Hepatitis C Virus Positive Patients with Type 2 Diabetes Mellitus: A Word of Caution after the Initial Enthusiasm. *J Clin Med* 2020; **9** [PMID: 32092892 DOI: 10.3390/jcm9020563]

- 43 **Mishra PR**, Bharti A, Arora R, Mir IA, Punia VPS. Increased Insulin Resistance in Hepatitis-C Infection-Association with Altered Hepatic Function Testing. *Pathophysiology* 2022; **29**: 326-332 [PMID: [35893594](#) DOI: [10.3390/pathophysiology29030024](#)]
- 44 **Papatheodoridis GV**, Chrysanthos N, Savvas S, Sevastianos V, Kafiri G, Petraki K, Manesis EK. Diabetes mellitus in chronic hepatitis B and C: prevalence and potential association with the extent of liver fibrosis. *J Viral Hepat* 2006; **13**: 303-310 [PMID: [16637860](#) DOI: [10.1111/j.1365-2893.2005.00677.x](#)]
- 45 **Younossi ZM**, McCullough AJ, Ong JP, Barnes DS, Post A, Tavill A, Bringman D, Martin LM, Assmann J, Gramlich T, Mullen KD, O'Shea R, Carey WD, Ferguson R. Obesity and non-alcoholic fatty liver disease in chronic hepatitis C. *J Clin Gastroenterol* 2004; **38**: 705-709 [PMID: [15319656](#) DOI: [10.1097/01.mcg.0000135372.10846.2a](#)]
- 46 **Tsao YC**, Chen JY, Yeh WC, Peng YS, Li WC. Association between visceral obesity and hepatitis C infection stratified by gender: a cross-sectional study in Taiwan. *BMJ Open* 2017; **7**: e017117 [PMID: [29133317](#) DOI: [10.1136/bmjopen-2017-017117](#)]
- 47 **Huang JF**, Chuang WL, Yu ML, Yu SH, Huang CF, Huang CI, Yeh ML, Hsieh MH, Yang JF, Lin ZY, Chen SC, Dai CY, Chang WY. Hepatitis C virus infection and metabolic syndrome---a community-based study in an endemic area of Taiwan. *Kaohsiung J Med Sci* 2009; **25**: 299-305 [PMID: [19560994](#) DOI: [10.1016/S1607-551X\(09\)70520-0](#)]
- 48 **Del Campo JA**, Romero-Gómez M. Steatosis and insulin resistance in hepatitis C: a way out for the virus? *World J Gastroenterol* 2009; **15**: 5014-5019 [PMID: [19859993](#) DOI: [10.3748/wjg.15.5014](#)]
- 49 **Sheikh MY**, Choi J, Qadri I, Friedman JE, Sanyal AJ. Hepatitis C virus infection: molecular pathways to metabolic syndrome. *Hepatology* 2008; **47**: 2127-2133 [PMID: [18446789](#) DOI: [10.1002/hep.22269](#)]
- 50 **Lecube A**, Hernández C, Genescà J, Simó R. Proinflammatory cytokines, insulin resistance, and insulin secretion in chronic hepatitis C patients: A case-control study. *Diabetes Care* 2006; **29**: 1096-1101 [PMID: [16644643](#) DOI: [10.2337/diacare.2951096](#)]
- 51 **Huang JF**, Dai CY, Hwang SJ, Ho CK, Hsiao PJ, Hsieh MY, Lee LP, Lin ZY, Chen SC, Wang LY, Shin SJ, Chang WY, Chuang WL, Yu ML. Hepatitis C viremia increases the association with type 2 diabetes mellitus in a hepatitis B and C endemic area: an epidemiological link with virological implication. *Am J Gastroenterol* 2007; **102**: 1237-1243 [PMID: [17531012](#) DOI: [10.1111/j.1572-0241.2007.01181.x](#)]
- 52 **Liu Y**, Jiang C, Hao Y, Xu L, Zhang W, Jin YL, Zhu T, Lam TH. Association of hepatitis B surface antigen seropositivity and hepatitis B surface antibody seropositivity with diabetes: a cross-sectional study based on two Chinese populations in Guangdong, China. *BMJ Open* 2020; **10**: e028968 [PMID: [32690726](#) DOI: [10.1136/bmjopen-2019-028968](#)]
- 53 **Liu XY**, Zhou Y. Influence of hepatitis B virus on the prevalence of diabetes complications in patients with type 2 diabetes. *J Diabetes Investig* 2023; **14**: 429-434 [PMID: [36510700](#) DOI: [10.1111/jdi.13954](#)]
- 54 **Li M**, Zhou H, Guan Y, Peng H, Wang S, Zhang P, Su B. Positive hepatitis B surface antibody is associated with reduced risk of diabetes mellitus in retired female Chinese workers. *J Diabetes* 2016; **8**: 158-161 [PMID: [26016384](#) DOI: [10.1111/1753-0407.12317](#)]
- 55 **Yu MW**, Lin CL, Liu CJ, Huang YW, Hu JT, Wu WJ, Wu CF. Hepatic steatosis and development of type 2 diabetes: Impact of chronic hepatitis B and viral specific factors. *J Formos Med Assoc* 2022; **121**: 1478-1487 [PMID: [34764005](#) DOI: [10.1016/j.jfma.2021.10.014](#)]
- 56 **Yan LB**, Liao J, Han N, Zhou LY, Wang XE, Wang YJ, Tang H. Association between Hepatitis B Virus Infection and Metabolic Syndrome in Southwest China: A Cross-sectional Study. *Sci Rep* 2020; **10**: 6738 [PMID: [32317690](#) DOI: [10.1038/s41598-020-62609-4](#)]
- 57 **Chiang CH**, Yang HI, Jen CL, Lu SN, Wang LY, You SL, Su J, Ilcoje UH, Chen CJ; REVEAL-HBV Study Group. Association between obesity, hypertriglyceridemia and low hepatitis B viral load. *Int J Obes (Lond)* 2013; **37**: 410-415 [PMID: [22531094](#) DOI: [10.1038/ijo.2012.63](#)]
- 58 **Shi YW**, Yang RX, Fan JG. Chronic hepatitis B infection with concomitant hepatic steatosis: Current evidence and opinion. *World J Gastroenterol* 2021; **27**: 3971-3983 [PMID: [34326608](#) DOI: [10.3748/wjg.v27.i26.3971](#)]
- 59 **Huang J**, Jing M, Wang C, Wang M, You S, Lin S, Zhu Y. The impact of hepatitis B virus infection status on the prevalence of nonalcoholic fatty liver disease: A population-based study. *J Med Virol* 2020; **92**: 1191-1197 [PMID: [31691993](#) DOI: [10.1002/jmv.25621](#)]
- 60 **Huang CY**, Lu CW, Liu YL, Chiang CH, Lee LT, Huang KC. Relationship between chronic hepatitis B and metabolic syndrome: A structural equation modeling approach. *Obesity (Silver Spring)* 2016; **24**: 483-489 [PMID: [26719030](#) DOI: [10.1002/oby.21333](#)]
- 61 **Kang SK**, Chung TW, Lee JY, Lee YC, Morton RE, Kim CH. The hepatitis B virus X protein inhibits secretion of apolipoprotein B by enhancing the expression of N-acetylglucosaminyltransferase III. *J Biol Chem* 2004; **279**: 28106-28112 [PMID: [15123606](#) DOI: [10.1074/jbc.M403176200](#)]
- 62 **Zhao H**, Wang Q, Luo C, Liu L, Xie W. Recompensation of Decompensated Hepatitis B Cirrhosis: Current Status and Challenges. *Biomed Res Int* 2020; **2020**: 9609731 [PMID: [33029534](#) DOI: [10.1155/2020/9609731](#)]
- 63 **Lin J**, Ou HY, Karnchanasorn R, Samoa R, Chuang LM, Chiu KC. Role of hepatitis A virus in diabetes mellitus. *World J Diabetes* 2021; **12**: 1928-1941 [PMID: [34888017](#) DOI: [10.4239/wjcd.v12.i11.1928](#)]
- 64 **Zitelli PMY**, Gomes-Gouvêa M, Mazo DF, Singer JDM, Oliveira CPMS, Farias AQ, Pinho JR, Tanigawa RY, Alves VAF, Carrilho FJ, Pessoa MG. Hepatitis E virus infection increases the risk of diabetes and severity of liver disease in patients with chronic hepatitis C virus infection. *Clinics (Sao Paulo)* 2021; **76**: e3270 [PMID: [34852140](#) DOI: [10.6061/clinics/2021/e3270](#)]



Published by **Baishideng Publishing Group Inc**
7041 Koll Center Parkway, Suite 160, Pleasanton, CA 94566, USA

Telephone: +1-925-3991568

E-mail: office@baishideng.com

Help Desk: <https://www.f6publishing.com/helpdesk>

<https://www.wjgnet.com>

