

World Journal of *Hepatology*

World J Hepatol 2024 March 27; 16(3): 300-489



EDITORIAL

- 300 Is there a need for universal double reflex testing of HBsAg-positive individuals for hepatitis D infection?
Abbas Z, Abbas M

REVIEW

- 304 Non-alcoholic fatty liver disease and sleep disorders
Bu LF, Xiong CY, Zhong JY, Xiong Y, Li DM, Hong FF, Yang SL
- 316 Amebic liver abscess: An update
Kumar R, Patel R, Priyadarshi RN, Narayan R, Maji T, Anand U, Soni JR

MINIREVIEWS

- 331 Advances in discovery of novel investigational agents for functional cure of chronic hepatitis B: A comprehensive review of phases II and III therapeutic agents
Lam R, Lim JK
- 344 Protein succinylation, hepatic metabolism, and liver diseases
Liu S, Li R, Sun YW, Lin H, Li HF
- 353 Hepatocellular carcinoma immune microenvironment and check point inhibitors-current status
Gupta T, Jarpula NS

ORIGINAL ARTICLE

Case Control Study

- 366 Associations of PNPLA3 and LEP genetic polymorphisms with metabolic-associated fatty liver disease in Thai people living with human immunodeficiency virus
Choochuay K, Kunhapan P, Puangpetch A, Tongsima S, Srisawasdi P, Sobhonslidsuk A, Sungkanuparph S, Biswas M, Sukasem C

Retrospective Cohort Study

- 379 Comparison of fungal *vs* bacterial infections in the medical intensive liver unit: Cause or corollary for high mortality?
Khan S, Hong H, Bass S, Wang Y, Wang XF, Sims OT, Koval CE, Kapoor A, Lindenmeyer CC
- 393 Lean body mass index is a marker of advanced tumor features in patients with hepatocellular carcinoma
deLemos AS, Zhao J, Patel M, Kookan B, Mathur K, Nguyen HM, Mazhar A, McCarter M, Burney H, Kettler C, Chalasani N, Gawrieh S

Retrospective Study

- 405 Prediction model for hepatitis B e antigen seroconversion in chronic hepatitis B with peginterferon-alfa treated based on a response-guided therapy strategy

Zhang PX, Zheng XW, Zhang YF, Ye J, Li W, Tang QQ, Zhu J, Zou GZ, Zhang ZH

- 418 Retrospective study of the incidence, risk factors, treatment outcomes of bacterial infections at uncommon sites in cirrhotic patients

Schneitler S, Schneider C, Casper M, Lammert F, Krawczyk M, Becker SL, Reichert MC

Observational Study

- 428 Palliative long-term abdominal drains *vs* large volume paracenteses for the management of refractory ascites in end-stage liver disease

Kaur S, Motta RV, Chapman B, Wharton V, Collier JD, Saffioti F

Basic Study

- 439 Comprehensive prognostic and immune analysis of sterol O-acyltransferase 1 in patients with hepatocellular carcinoma

Gan CJ, Zheng Y, Yang B, Cao LM

SYSTEMATIC REVIEWS

- 452 Update in lean metabolic dysfunction-associated steatotic liver disease

Sato-Espinoza K, Chotiprasidhi P, Huaman MR, Díaz-Ferrer J

META-ANALYSIS

- 465 Influence of nonalcoholic fatty liver disease on response to antiviral treatment in patients with chronic hepatitis B: A meta-analysis

Liu SY, Wang D, Liu J, Yang LP, Chen GY

- 477 Prognostic value of neutrophil-to-lymphocyte ratio in end-stage liver disease: A meta-analysis

Cai XH, Tang YM, Chen SR, Pang JH, Chong YT, Cao H, Li XH

ABOUT COVER

Editorial Board Member of *World Journal of Hepatology*, Marcello Maida, MD, Doctor, Gastroenterology and Endoscopy Unit, S.Elia - Raimondi Hospital, Caltanissetta, Caltanissetta 93100, Italy. marcello.maida@hotmail.it

AIMS AND SCOPE

The primary aim of *World Journal of Hepatology* (*WJH*, *World J Hepatol*) is to provide scholars and readers from various fields of hepatology with a platform to publish high-quality basic and clinical research articles and communicate their research findings online.

WJH mainly publishes articles reporting research results and findings obtained in the field of hepatology and covering a wide range of topics including chronic cholestatic liver diseases, cirrhosis and its complications, clinical alcoholic liver disease, drug induced liver disease autoimmune, fatty liver disease, genetic and pediatric liver diseases, hepatocellular carcinoma, hepatic stellate cells and fibrosis, liver immunology, liver regeneration, hepatic surgery, liver transplantation, biliary tract pathophysiology, non-invasive markers of liver fibrosis, viral hepatitis.

INDEXING/ABSTRACTING

The *WJH* is now abstracted and indexed in PubMed, PubMed Central, Emerging Sources Citation Index (ESCI), Scopus, Reference Citation Analysis, China Science and Technology Journal Database, and Superstar Journals Database. The 2023 Edition of Journal Citation Reports® cites the 2022 impact factor (IF) for *WJH* as 2.4.

RESPONSIBLE EDITORS FOR THIS ISSUE

Production Editor: Yi-Xuan Cai, Production Department Director: Xiang Li, Cover Editor: Xiang Li.

NAME OF JOURNAL

World Journal of Hepatology

ISSN

ISSN 1948-5182 (online)

LAUNCH DATE

October 31, 2009

FREQUENCY

Monthly

EDITORS-IN-CHIEF

Nikolaos Pyrsopoulos, Ke-Qin Hu, Koo Jeong Kang

EXECUTIVE ASSOCIATE EDITORS-IN-CHIEF

Shuang-Suo Dang

EDITORIAL BOARD MEMBERS

<https://www.wjgnet.com/1948-5182/editorialboard.htm>

PUBLICATION DATE

March 27, 2024

COPYRIGHT

© 2024 Baishideng Publishing Group Inc

PUBLISHING PARTNER

Department of Infectious Diseases, the Second Affiliated Hospital of Xi'an Jiaotong University

INSTRUCTIONS TO AUTHORS

<https://www.wjgnet.com/bpg/gerinfo/204>

GUIDELINES FOR ETHICS DOCUMENTS

<https://www.wjgnet.com/bpg/GerInfo/287>

GUIDELINES FOR NON-NATIVE SPEAKERS OF ENGLISH

<https://www.wjgnet.com/bpg/gerinfo/240>

PUBLICATION ETHICS

<https://www.wjgnet.com/bpg/GerInfo/288>

PUBLICATION MISCONDUCT

<https://www.wjgnet.com/bpg/gerinfo/208>

POLICY OF CO-AUTHORS

<https://www.wjgnet.com/bpg/GerInfo/310>

ARTICLE PROCESSING CHARGE

<https://www.wjgnet.com/bpg/gerinfo/242>

STEPS FOR SUBMITTING MANUSCRIPTS

<https://www.wjgnet.com/bpg/GerInfo/239>

ONLINE SUBMISSION

<https://www.f6publishing.com>

PUBLISHING PARTNER's OFFICIAL WEBSITE

http://2yuan.xjtu.edu.cn/Html/Departments/Main/Index_21148.html



Retrospective Cohort Study

Lean body mass index is a marker of advanced tumor features in patients with hepatocellular carcinoma

Andrew Scott deLemos, Jing Zhao, Milin Patel, Banks Kookan, Karan Mathur, Hieu Minh Nguyen, Areej Mazhar, Maggie McCarter, Heather Burney, Carla Kettler, Naga Chalasani, Samer Gawrieh

Specialty type: Gastroenterology and hepatology

Provenance and peer review: Invited article; Externally peer reviewed.

Peer-review model: Single blind

Peer-review report's scientific quality classification

Grade A (Excellent): 0
Grade B (Very good): 0
Grade C (Good): C
Grade D (Fair): 0
Grade E (Poor): 0

P-Reviewer: Kalinowski P, Poland

Received: November 15, 2023

Peer-review started: November 15, 2023

First decision: November 27, 2023

Revised: December 31, 2023

Accepted: February 23, 2024

Article in press: February 23, 2024

Published online: March 27, 2024



Andrew Scott deLemos, Milin Patel, Banks Kookan, Department of Medicine, Atrium Health, Charlotte, NC 28204, United States

Jing Zhao, Maggie McCarter, Center for Outcomes Research and Evaluation, Atrium Health, Charlotte, NC 28204, United States

Karan Mathur, Department of Medicine, Indiana University School of Medicine, Indianapolis, IN 46202, United States

Hieu Minh Nguyen, Center for Health System Sciences (CHASSIS), Atrium Health, Charlotte, NC 28204, United States

Areej Mazhar, Department of Medicine, Northwestern University Feinberg School of Medicine, Chicago, IL 60611, United States

Heather Burney, Carla Kettler, Department of Biostatistics and Health Data Science, Indiana University School of Medicine, Indianapolis, IN 46202, United States

Naga Chalasani, Samer Gawrieh, Department of Gastroenterology and Hepatology, Indiana University School of Medicine, Indianapolis, IN 46202, United States

Corresponding author: Andrew Scott deLemos, MD, Associate Professor, Department of Medicine, Atrium Health, 1025 Morehead Medical Drive, Suite 600, Charlotte, NC 28204, United States. andrew.delemos@atriumhealth.org

Abstract

BACKGROUND

Obesity is an independent risk factor for the development of hepatocellular carcinoma (HCC) and may influence its outcomes. However, after diagnosis of HCC, like other malignancies, the obesity paradox may exist where higher body mass index (BMI) may in fact confer a survival benefit. This is frequently observed in patients with advanced HCC and cirrhosis, who often present late with advanced tumor features and cancer related weight loss.

AIM

To explore the relationship between BMI and survival in patients with cirrhosis and HCC.

METHODS

This is a retrospective cohort study of over 2500 patients diagnosed with HCC between 2009-2019 at two United States academic medical centers. Patient and tumor characteristics were extracted manually from medical records of each institutions' cancer registries. Patients were stratified according to BMI classes: $< 25 \text{ kg/m}^2$ (lean), $25\text{-}29.9 \text{ kg/m}^2$ (overweight), and $> 30 \text{ kg/m}^2$ (obese). Patient and tumor characteristics were compared according to BMI classification. We performed an overall survival analysis using Kaplan Meier by the three BMI classes and after adjusting for Milan criteria. A multivariable Cox regression model was then used to assess known risk factors for survival in patients with cirrhosis and HCC.

RESULTS

A total of 2548 patients with HCC were included in the analysis of which 11.2% ($n = 286$) were classified as non-cirrhotic. The three main BMI categories: Lean ($n = 754$), overweight ($n = 861$), and obese ($n = 933$) represented 29.6%, 33.8%, and 36.6% of the total population overall. Within each BMI class, the non-cirrhotic patients accounted for 15% ($n = 100$), 12% ($n = 94$), and 11% ($n = 92$), respectively. Underweight patients with a BMI $< 18.5 \text{ kg/m}^2$ ($n = 52$) were included in the lean cohort. Of the obese cohort, 42% ($n = 396$) had a BMI $\geq 35 \text{ kg/m}^2$. Out of 2262 patients with cirrhosis and HCC, 654 (29%) were lean, 767 (34%) were overweight, and 841 (37%) were obese. The three BMI classes did not differ by age, MELD, or Child-Pugh class. Chronic hepatitis C was the dominant etiology in lean compared to the overweight and obese patients (71%, 62%, 49%, $P < 0.001$). Lean patients had significantly larger tumors compared to the other two BMI classes (5.1 *vs* 4.2 *vs* 4.2 cm, $P < 0.001$), were more likely outside Milan (56% *vs* 48% *vs* 47%, $P < 0.001$), and less likely to undergo transplantation (9% *vs* 18% *vs* 18%, $P < 0.001$). While both tumor size ($P < 0.0001$) and elevated alpha fetoprotein ($P < 0.0001$) were associated with worse survival by regression analysis, lean BMI was not ($P = 0.36$).

CONCLUSION

Lean patients with cirrhosis and HCC present with larger tumors and are more often outside Milan criteria, reflecting cancer related cachexia from delayed diagnosis. Access to care for hepatitis C virus therapy and liver transplantation confer a survival benefit, but not overweight or obese BMI classifications.

Key Words: Hepatocellular carcinoma; Cirrhosis; Obesity; Body mass index class; Sarcopenia; Chronic hepatitis C

©The Author(s) 2024. Published by Baishideng Publishing Group Inc. All rights reserved.

Core Tip: This study explores the impact of different body mass index (BMI) strata on patient survival following the diagnosis of hepatocellular carcinoma (HCC). We stratified patients with cirrhosis by lean (BMI $< 25 \text{ kg/m}^2$), overweight BMI ($25\text{-}29.9 \text{ kg/m}^2$), and obese (BMI $\geq 30 \text{ kg/m}^2$) categories, and analyzed patient and tumor characteristics. Lean patients with HCC presented with significantly larger tumors as well as more advanced tumors. Survival was significantly reduced in lean HCC patients in the overall cohort but was restricted to those patients outside Milan criteria following sub-group analysis. We included a survival analysis by BMI class according to the three most common chronic liver diseases: Chronic hepatitis C, alcoholic liver disease, and nonalcoholic fatty liver disease. Lastly, we found no significant difference in survival comparing the three BMI classes from our sub-group of 286 patients with HCC but without cirrhosis.

Citation: deLemos AS, Zhao J, Patel M, Kookan B, Mathur K, Nguyen HM, Mazhar A, McCarter M, Burney H, Kettler C, Chalasani N, Gawrieh S. Lean body mass index is a marker of advanced tumor features in patients with hepatocellular carcinoma. *World J Hepatol* 2024; 16(3): 393-404

URL: <https://www.wjgnet.com/1948-5182/full/v16/i3/393.htm>

DOI: <https://dx.doi.org/10.4254/wjh.v16.i3.393>

INTRODUCTION

The epidemiology of cirrhosis and hepatocellular carcinoma (HCC) is evolving as the burden of disease shifts toward a future predominated by alcoholic liver disease (ALD) and nonalcoholic fatty liver disease (NAFLD). A recent study from Canada projects that 92% of incident cases of cirrhosis will be due to either NAFLD or ALD in 2040[1]. The incidence of NAFLD-related HCC in the United States is predicted to increase by 137% to 12240 cases by 2030[2]. These alarming estimates underscore the present mandate to identify patients at risk for cirrhosis and HCC, presently the third leading cause of cancer death worldwide[3].

While the risk of HCC development varies depending on the underlying etiology of liver disease, ample data now supports a higher risk among chronic liver disease (CLD) patients with superimposed metabolic syndrome[4]. In a retrospective cohort of NAFLD patients, the presence of diabetes, hypertension, and dyslipidemia was shown to confer the highest risk for progression to HCC relative to patients with obesity alone[5]. A report from the International Agency

for Research on Cancer, however, clearly establishes a higher body mass index (BMI) as a risk factor for HCC with a relative risk of 1.8 compared to a normal reference BMI[6]. A recent meta-analysis of 22 prospective studies encompassing over 6 million patients followed for liver cancer occurrence found that a higher BMI was associated with an increased risk of HCC, with hazard ratios (HR) that increased from 1.36 to 1.77 to 3.08 in overweight, obese class I, and obese class II/III patients respectively[7].

Although obesity is a recognized risk factor for incident HCC, whether a high BMI translates into poorer survival following the diagnosis of HCC remains unclear. In fact, a survival analysis of a nationwide cancer registry of 10578 patients with HCC from South Korea found that overweight men with a BMI of 25-29.9 kg/m² had a better prognosis than normal weight men[8]. This “obesity paradox”, or a survival benefit in overweight or mildly obese patients with cancer may in fact be apparent in patients with HCC such as has been shown in other types of cancer[9,10]. The “obesity paradox” may also be applicable in the context of cirrhosis. The presence of obesity was found by multivariate analysis to be associated with a lower risk of inpatient mortality in 32000 cirrhotic patients from the Nationwide Inpatient Sample [11]. Additionally, a BMI ≥ 30 kg/m² was recently identified as a variable associated with improved survival in cirrhotic patients undergoing surgery[12].

This study aims to investigate the relationship between BMI at diagnosis of HCC, tumor characteristics and patient survival. We contrasted patient and tumor characteristics, as well as overall survival across 3 BMIs: BMI < 25 kg/m² (lean), BMI 25-29.9 kg/m² (overweight), and BMI ≥ 30 kg/m² (obese) in over 2500 patients diagnosed with HCC over the last decade. To our knowledge, this is the first United States-based study comprised of individually collected patient data to address the “obesity paradox” in patients with HCC.

MATERIALS AND METHODS

Study design

This retrospective study included patient data from 2 academic medical centers (Atrium Health in Charlotte, North Carolina and Indiana University School of Medicine in Indianapolis, Indiana). HCC cases diagnosed from January of 2009 through June of 2019 were identified from each institutions’ cancer registries. A detailed explanation of the cohort composition was described previously[13]. A confirmation of the HCC diagnosis based upon histological and/or radiographic evidence consistent with American Association for Study of Liver Disease guidelines was made by direct review of the individual electronic health record (EHR)[14]. Following verification of the HCC diagnosis, patient and tumor characteristics were then manually extracted from the EHR into a shared REDCap database. Tumor variables collected included alpha fetoprotein (AFP), largest tumor diameter, tumor-node-metastasis stage, and whether the HCC was within Milan criteria[15,16]. The method of HCC diagnosis was ascertained whenever possible and categorized as by routine screening, symptom work-up, and/or incidentally. All HCC treatment modalities were recorded from the medical record for analysis as well.

Patients were classified according to 3 BMI classes: BMI < 25 kg/m² (lean), BMI 25-29.9 kg/m² (overweight), and BMI ≥ 30 kg/m² (obese). BMI was individually recorded from each EHR at the nearest timepoint from initial date of HCC diagnosis. Provider documentation, again through manual chart review was used in concert with confirmatory laboratory testing to assess for the presence of co-morbid metabolic risk factors including diabetes, dyslipidemia, coronary artery disease and hypertension. Patients were classified as either cirrhotic or non-cirrhotic according to criteria published previously by Mittal *et al*[17] and externally validated by our group[17,18]. The underlying etiology of CLD was determined by review of hepatology provider notes and supportive clinical testing. A patient with combined chronic hepatitis C (CHC) and alcohol abuse was categorized as CHC and we captured whether a sustained virologic response (SVR) was known to have occurred. Laboratory testing for a model for end-stage liver disease (MELD) calculation closest to the time of HCC diagnosis was recorded. The presence or absence of liver-related complications (ascites, hepatic encephalopathy, varices, and spontaneous bacterial peritonitis) was collected through the last documentation in the EHR.

Patient survival was established from cancer registries and medical records. For patients who are still alive or died with an unknown date of death, the date of last contact available in the medical record was used to define the time of censoring for the survival analysis. Each participating site had local Institutional Review Board approval to conduct the study.

Statistical analyses

BMI group differences of patient and tumor characteristics were compared using analysis of variance, Kruskal-Wallis test, chi-square test, and Fisher’s Exact test, as appropriate. Cirrhotic and non-cirrhotic cases were analyzed separately. Survival curves among BMI classes was estimated through the Kaplan-Meier method. Subgroup analyses by Milan criteria as well as etiology of CLD were conducted and included a subgroup of patients with BMI ≥ 35 kg/m². To better evaluate potential survival differences, multivariable Cox regression models were conducted to assess risk factors for survival with HR and 95%CI presented. Risk factors included gender, race, diabetes, alcohol use, etiology of CLD, AFP, Milan criteria, screening within 2 years before HCC diagnosis, liver transplantation, and BMI categories. Statistical analyses were performed using SAS statistical software (version 9.4; SAS Institute, Cary, NC, United States).

RESULTS

Study population

A total of 2548 patients with HCC were included in the analysis of which 11.2% ($n = 286$) were classified as non-cirrhotic (Figure 1). The three main BMI categories: Lean ($n = 754$), overweight ($n = 861$), and obese ($n = 933$) represented 29.6%, 33.8%, and 36.6% of the total population overall. Within each BMI class, the non-cirrhotic patients accounted for 15% ($n = 100$), 12% ($n = 94$), and 11% ($n = 92$), respectively. Underweight patients with a BMI < 18.5 kg/m² ($n = 52$) were included in the lean cohort. Of the obese cohort, 42% ($n = 396$) had a BMI ≥ 35 kg/m².

Clinical features of cirrhotic HCC patients

Out of 2262 patients with cirrhosis and HCC, 654 (29%) were lean, 767 (34%) were overweight, and 841 (37%) were obese (Table 1). The mean age at HCC diagnosis for cirrhotic patients was 62 years and did not differ among the three BMI classes ($P = 0.43$). Although women represented a minority of HCC cases overall (21%), they were overrepresented in the obese cohort accounting for 26% of cases. By comparison, men accounted for a higher percentage of cases in the lean (80%) and overweight (85%) groups ($P < 0.001$). Lean patients with HCC were less frequently white or Hispanic and more frequently Black or Asian. As expected, the rate of diabetes, dyslipidemia, hypertension, and coronary artery disease was highest in the obese cohort compared to the overweight and lean groups ($P < 0.001$ for each risk factor; Table 1). There were no significant or clinical differences in laboratory tests or MELD-Na score across the three groups.

Lean patients with HCC had the highest frequency of alcohol abuse (53%), followed by overweight (50%) and obese patients (38%, $P < 0.001$). As anticipated, NAFLD was the etiology of cirrhosis in 27% of obese patients with HCC and accounted for 14% and 5% in the overweight and lean groups, ($P < 0.001$). Correspondingly, CHC accounted for 49%, 62%, and 71% of cases across the three BMI classes ($P < 0.001$). SVR rates were similar across the 3 CHC BMI groups, ranging from 34% to 41% ($P = 0.07$). The prevalence of ALD as the only etiology of liver disease was also similar across the 3 BMI classes (13%-15%, $P = 0.51$).

There were no differences in the distribution of Child-Pugh classes, presence of ascites or portal vein thrombosis across the 3 groups. In contrast, the presence of encephalopathy (36% vs 33% vs 26%, $P < 0.001$) and varices (51% vs 48% vs 40%, $P < 0.001$) were significantly higher in the obese relative to the overweight and lean groups.

Tumor characteristics among BMI classes in cirrhotic population

The lean HCC cohort presented with significantly larger tumors than the overweight and lean cohorts (mean 5.1 vs 4.2 vs 4.2 cm, $P < 0.001$). An AFP level > 200 ng/mL was also more frequently encountered in the lean HCC group in comparison to the other two groups (36% vs 23% vs 26%, $P < 0.001$). The lean cohort presented with more aggressive tumors as evidenced by the lowest rate of single tumors (35% vs 43% vs 46%) and highest rate of vascular invasion or extrahepatic spread (30% vs 22% vs 22%, $P < 0.001$ for overall clinical tumor stage). Predictably, the lean cohort was least likely to fall within Milan criteria (44% vs 52% vs 53%, $P = 0.003$) and to undergo liver transplantation (9% vs 18% vs 18%, $P < 0.001$). Lastly, the lean HCC group was most likely to be diagnosed as part of a symptom workup (48% vs 42% vs 38%, $P = 0.003$) and least likely by screening (46% vs 49% vs 55%, $P = 0.007$), compared to the overweight and obese groups (Table 2).

Patient survival by BMI classification

Median survival in the lean HCC cohort was 1.28 years ($P < 0.0001$, 95%CI 1.03-1.44) and was significantly lower compared to the overweight; 2.13 years (95%CI 1.79-2.59) and obese; 2.14 years (95%CI 1.83-2.51) cohorts (Figure 2A). The reduction in overall survival for lean cirrhotic HCC patients did not persist upon multivariate analysis ($P = 0.36$; Table 3). Although there was no difference in survival by BMI class when adjusting for patients with HCCs within Milan criteria ($P = 0.35$), there was a significantly increased mortality for lean cohort patients with HCCs outside Milan criteria compared to the other 2 BMI groups ($P < 0.0001$; Figure 3). This observation remained significant on multivariate analysis as patients with tumors within Milan criteria had a significant survival benefit (HR = 0.59, 95%CI 0.48-0.72, $P < 0.0001$) as did those patients undergoing liver transplantation (HR = 0.10, 95%CI 0.06-0.17, $P < 0.0001$). A SVR from CHC infection was also associated with a survival benefit (HR = 0.27, 95%CI 0.21-0.35, $P < 0.0001$) while an AFP > 200 ng/mL (HR = 1.93, 95%CI 1.61-2.32, $P < 0.0001$) and tumor size (cm) (HR = 1.08, 95%CI 1.05-1.12) were associated with worse survival (Table 3).

A final survival analysis was performed after stratifying by the three most common etiologies of CLD: Hepatitis C virus (HCV), alcohol, and NAFLD (Figure 2B-D). For each etiology, the obese HCC cohort was further subdivided into Class I obese (BMI: 30-34.9 kg/m²) and Class II & III (BMI ≥ 35 kg/m²). Median survival was significantly lower for the lean HCC cohort with underlying HCV (1.42 years, $P = 0.01$, 95%CI 1.2-1.79) and alcohol (0.7 years, $P = 0.0007$, 95%CI 0.21-1.15) compared to the three other BMI groups. The lean NAFLD-related HCC cohort patients were predictably low in number ($n = 23$) and their median survival, while lower at 1.44 years (95%CI: 0.39-) did not reach statistical significance compared to the overweight (2.95 years, 95%CI 1.5-4.14), obese class I (1.99 years 1.42-) and obese class II (2.23 years, 95%CI 1.54-2.87) (P overall = 0.84 among 4 BMI classes).

Patient and tumor characteristics among BMI classes in non-cirrhotic population

The 286 patients with HCC but without cirrhosis were evaluated according to BMI classification (Supplementary Table 1). Patients with non-cirrhotic HCC presented at a mean age of 66, 69, and 67 years old in the lean, overweight, and obese cohorts respectively ($P = 0.22$). Interestingly, women accounted for 30% of the non-cirrhotic HCC cohort (compared to 21% in the cirrhotic HCC cohort) though there was no significant difference in gender distribution across the three BMI

Table 1 Patient characteristics for cirrhotic hepatocellular carcinoma, *n* (%)

Variable	BMI < 25 kg/m ² (<i>n</i> = 654)	BMI 25.0-29.9 kg/m ² (<i>n</i> = 767)	BMI ≥ 30 kg/m ² (<i>n</i> = 841)	<i>P</i> value
Age (yr)	62.0 ± 8.9	62.6 ± 8.7	62.5 ± 8.4	0.43
Male	522 (79.8)	650 (84.7)	620 (73.7)	< 0.001
Race				
White	437 (66.8)	599 (78.6)	697 (83.1)	< 0.001
Black	166 (25.4)	110 (14.4)	98 (11.7)	
Hispanic	14 (2.1)	27 (3.5)	31 (3.7)	
Asian	24 (3.7)	14 (1.8)	9 (1.1)	
Other	13 (2.0)	12 (1.6)	4 (0.48)	
Diabetes	144 (22.1)	256 (33.5)	440 (52.3)	< 0.001
Hypertension	325 (49.8)	450 (58.8)	579 (68.8)	< 0.001
Dyslipidemia	127 (19.4)	192 (25.1)	252 (30.0)	< 0.001
Coronary artery disease	105 (16.1)	110 (14.4)	181 (21.5)	< 0.001
Peripheral vascular disease	74 (11.3)	76 (9.9)	83 (9.9)	0.6
ALT (Units/L)	63.0 ± 67.9	64.3 ± 68.8	56.8 ± 112.1	0.19
AST (Units/L)	103.5 ± 147.4	94.3 ± 99.0	90.6 ± 183.2	0.25
Total bilirubin (mg/dL)	2.1 ± 3.0	2.3 ± 3.7	2.2 ± 3.2	0.62
Alkaline phosphatase (Units/L)	161.3 ± 142.8	144.7 ± 108.2	146.6 ± 104.6	0.017
Albumin (g/dL)	3.15 ± 0.67	3.24 ± 0.69	3.16 ± 0.63	0.015
Platelets (k/cumm)	146.9 ± 96.8	122.4 ± 74.5	123.5 ± 76.1	< 0.001
Creatinine (md/dL)	1.03 ± 0.84	1.02 ± 0.63	1.07 ± 0.71	0.37
Sodium (mEq/L)	135.7 ± 4.1	136.6 ± 3.9	136.8 ± 3.8	< 0.001
INR	1.3 ± 0.31	1.3 ± 0.41	1.3 ± 0.39	0.1
MELD-Na score	14.3 ± 5.6	14.0 ± 5.5	14.3 ± 5.4	0.72
Alcohol abuse	342 (53.4)	380 (50.1)	312 (37.8)	< 0.001
Etiology of chronic liver disease				
All HCV	465 (71.2)	474 (61.8)	409 (48.6)	< 0.001
HCV with known SVR	158 (34)	183 (38.6)	167 (40.8)	0.07
Alcohol alone	82 (12.5)	106 (13.8)	123 (14.6)	0.51
NAFLD	34 (5.2)	108 (14.1)	230 (27.3)	< 0.001
AIH/PBC/PSC	7 (1.1)	12 (1.6)	14 (1.7)	0.61
HBV	32 (4.9)	35 (4.6)	19 (2.3)	0.01
HC/A1AT	4 (0.61)	7 (0.91)	15 (1.8)	0.08
Child-Pugh classification				
Child A	277 (43.0)	328 (43.5)	336 (40.8)	0.58
Child A-B	15 (2.3)	26 (3.4)	25 (3.0)	
Child B	263 (40.8)	284 (37.7)	345 (41.9)	
Child C	89 (13.8)	116 (15.4)	118 (14.3)	
Complications				
Ascites	300 (54.1)	383 (49.9)	404 (48.0)	0.31
Encephalopathy	170 (26.0)	252 (32.9)	302 (35.9)	< 0.001

Varices	259 (39.6)	368 (48.0)	427 (50.8)	< 0.001
Portal vein thrombus	148 (22.6)	164 (21.4)	181 (21.5)	0.83

BMI: Body mass index; MELD: Model for end-stage liver disease; HCV: Hepatitis C virus; NAFLD: Non-alcoholic fatty liver disease; AIH: Autoimmune hepatitis; PBC: Primary biliary cholangitis; PSC: Primary sclerosing cholangitis; HBV: Hepatitis B virus; HC: Hemochromatosis; A1AT: Alpha 1 antitrypsin deficiency; SVR: Sustained virologic response; AST: Aspartate aminotransferase; ALT: Alanine aminotransferase; INR: International normalized ratio.

Table 2 Tumor, diagnosis, and treatment characteristics for cirrhotic hepatocellular carcinoma, *n* (%)

Variable	BMI < 25 kg/m ² , (<i>n</i> = 654)	BMI 25.0-29.9 kg/m ² , (<i>n</i> = 767)	BMI ≥ 30 kg/m ² , (<i>n</i> = 841)	<i>P</i> value
Tumor size (cm)	5.1 ± 4.2	4.2 ± 3.0	4.2 ± 3.2	< 0.001
AFP (ng/mL) category				
< 20	269 (43.7)	399 (54.8)	417 (51.9)	< 0.001
20-200	125 (20.3)	164 (22.5)	178 (22.1)	
> 200	221 (35.9)	165 (22.7)	209 (26.0)	
Tumor stage				
Single	230 (35.2)	331 (43.2)	386 (46.0)	< 0.001
3 tumors < 3 cm	88 (13.5)	97 (12.7)	116 (13.8)	
Large multinodular	142 (21.7)	173 (22.6)	153 (18.2)	
Vascular invasion or extrahepatic spread	193 (29.6)	165 (21.5)	184 (21.9)	
Anatomic stage				
Stage I	173 (32.8)	239 (41.0)	293 (43.3)	< 0.001
Stage II	147 (27.9)	169 (29.0)	179 (26.5)	
Stage IIIA	36 (6.8)	38 (6.5)	49 (7.2)	
Stage IIIB	55 (10.4)	38 (6.5)	65 (9.6)	
Stage IIIC + IVA + IVB	116 (22.0)	99 (17.0)	90 (13.3)	
Tumor outside of Milan criteria	363 (55.6)	370 (48.3)	397 (47.3)	0.003
Tumor differentiation				
Well	70 (27.1)	109 (31.5)	116 (32.6)	0.15
Moderate	128 (49.6)	175 (50.6)	184 (51.7)	
Poor	53 (20.6)	59 (17.0)	54 (15.2)	
Undifferentiated/anaplastic	7 (2.7)	3 (0.9)	2 (0.5)	
How was HCC diagnosed?				
Part of screening	236 (45.8)	285 (48.6)	350 (54.8)	0.007
Incidental	120 (23.3)	120 (20.5)	116 (18.2)	0.098
Symptoms work up	246 (47.8)	244 (41.6)	241 (37.7)	0.003
Evidence of screening within 2 years	190 (36.8)	259 (44.0)	334 (52.1)	< 0.001
Liver transplantation	61 (9.3)	134 (17.5)	150 (17.8)	< 0.001
Palliative care/hospice	268 (41.0)	271 (35.3)	265 (31.5)	< 0.001

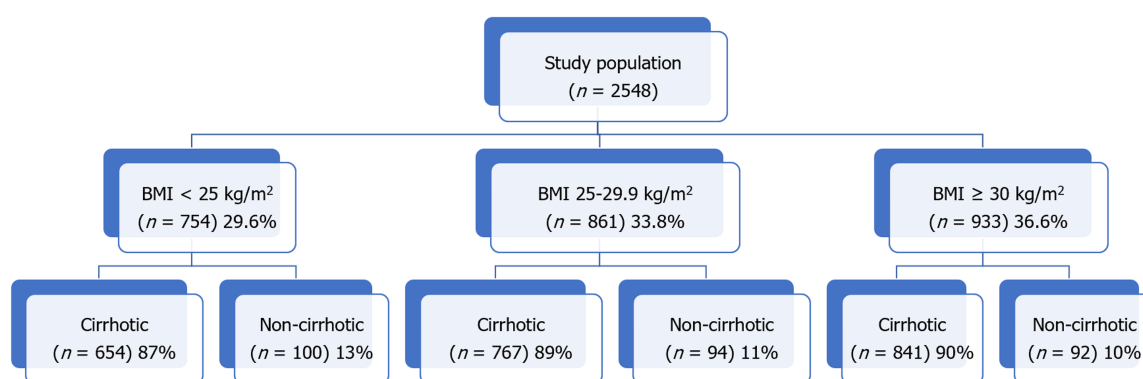
BMI: Body mass index; AFP: Alpha fetoprotein; HCC: Hepatocellular carcinoma.

strata. As observed in cirrhotic HCC (Table 1), the non-cirrhotic obese group was more often white than in the overweight or lean groups (88% *vs* 79% *vs* 72%, respectively) and less often Black (9% *vs* 10% *vs* 21%, respectively, *P* = 0.015). As expected, 78% of the cases had Aspartate aminotransferase to platelet ratio index scores < 1.0% and 76% had no record of undergoing HCC screening. No CLD etiology could be ascertained in 48% (137/286) of the cases, while the remaining were either NAFLD or viral hepatitis. HCC tumor size on presentation tended to be larger in the lean cohort (9.2 cm)

Table 3 Multivariable cox regression model of cirrhotic patient and tumor risk factors associated with survival after hepatocellular carcinoma diagnosis

Characteristic	Adjusted HR (95%CI)	P value
Age	1.0 (0.99-1.01)	0.58
Female (Ref.: Male)	0.94 (0.76-1.16)	0.57
Race (Ref.: White)		0.72
Asian	0.98 (0.55-1.76)	
Black	0.87 (0.70-1.08)	
Hispanic	0.94 (0.57-1.55)	
Other	0.81 (0.45-1.45)	
BMI classification (kg/m ²) (Ref.: BMI < 25)		0.36
BMI 25.0-29.9	0.87 (0.72-1.06)	
BMI ≥ 30	0.90 (0.73-1.11)	
Diabetes	0.96 (0.81-1.14)	0.64
Alcohol abuse	1.10 (0.90-1.34)	0.35
HCV SVR	0.27 (0.21-0.35)	< 0.0001
Tumor size (cm)	1.08 (1.05-1.12)	< 0.0001
AFP (ng/mL) (Ref.: < 20)		< 0.0001
20-200	1.51 (1.23-1.85)	
> 200	1.93 (1.61-2.32)	
Tumor within Milan criteria	0.59 (0.48-0.72)	< 0.0001
Liver transplantation	0.10 (0.06-0.16)	< 0.0001
Any method of screening within 2 years before HCC diagnosis (Ref.: No)		0.0634
Yes	1.01 (0.85-1.21)	
Unknown	0.79 (0.63-0.99)	

BMI: Body mass index; AFP: Alpha fetoprotein; HCC: Hepatocellular carcinoma; HR: Hazard ratios; HCV: Hepatitis C virus; SVR: Sustained virologic response.

**Figure 1 Study cohort by body mass index class.** BMI: Body mass index class.

compared to the overweight (7.6 cm) and obese (7.7 cm) cohorts respectively ($P = 0.06$) though there was no difference among the BMI classes in clinical tumor stage with 51% of the tumors presenting as single lesions and 23% presenting with vascular invasion or extrahepatic spread. Median survival in non-cirrhotic HCC patients in the lean (2.95 years, 95%CI 1.12-6.52), overweight (2.14 years 95%CI 0.96-2.96), and obese (2.77 years 95%CI 1.33-3.17) cohorts was not significantly different.

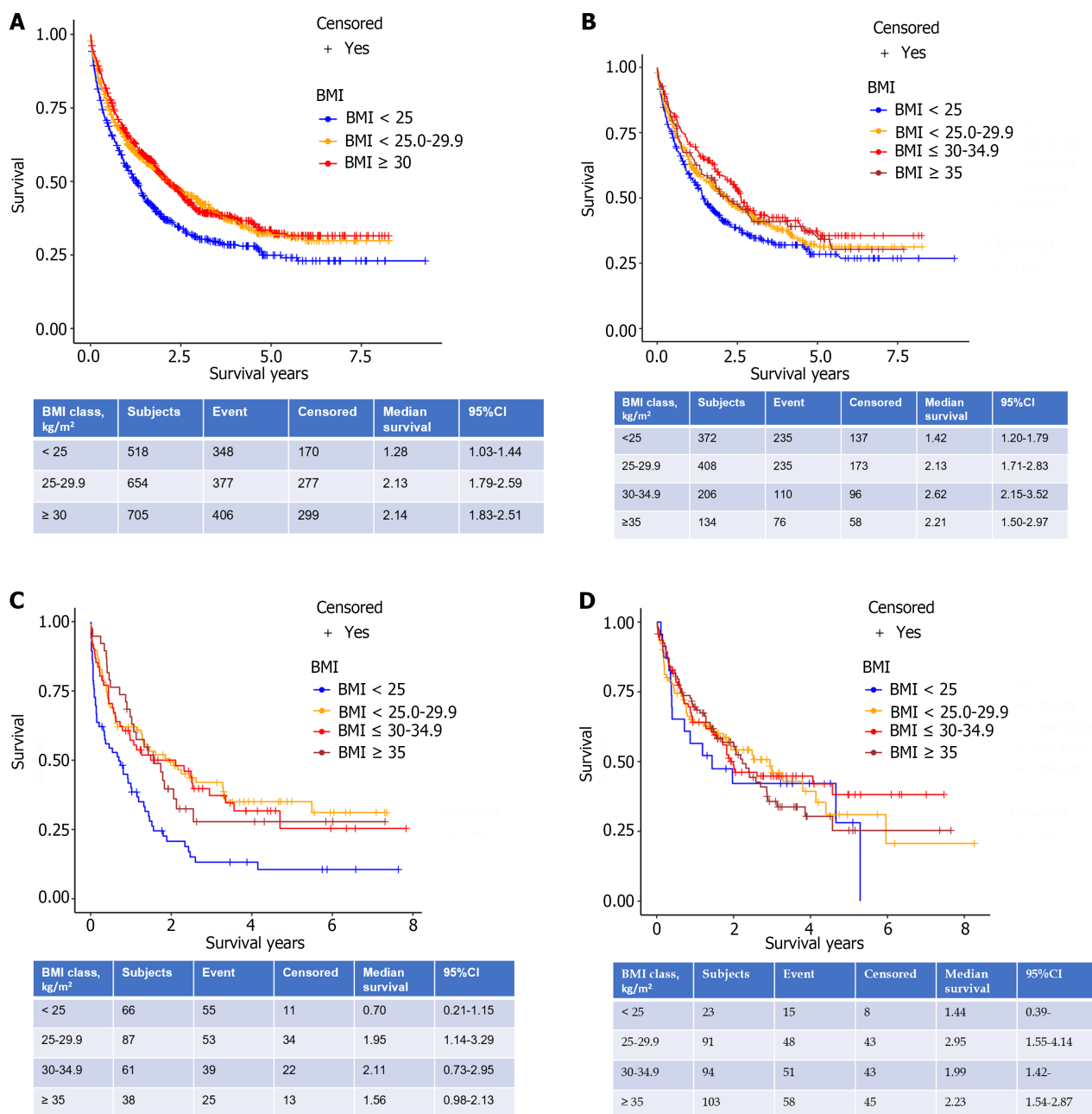


Figure 2 Patient survival. A: Patient survival with hepatocellular carcinoma according to body mass index class (BMI); B: Overall survival (OS) across four BMI groups by liver disease etiology: Hepatitis C virus; C: OS across four BMI groups by liver disease etiology: Alcohol; D: OS across four BMI groups by liver disease etiology: Nonalcoholic fatty liver disease. BMI: Body mass index class.

DISCUSSION

Our analysis of over 2500 patients diagnosed with HCC over the last decade focused on the differences between overweight and obese BMI classifications relative to a cohort of lean patients. The lean group, at the time of HCC diagnosis was enriched with hepatitis C and alcohol abuse and presented with significantly larger tumors as well as more aggressive tumors which resulted in lower frequency of liver transplantation compared to the overweight and obese groups. By multivariate analysis, however, the impact of BMI classification on patient survival was eclipsed by established survival outcomes such as presenting within Milan criteria and achieving a cure of CHC infection.

Our results should be interpreted within the context of emerging evidence demonstrating the significance of sarcopenia in survival following the diagnosis of HCC. In a Japanese study of over 1200 patients with HCC who underwent computed tomography for body composition assessment; sarcopenia, intramuscular fat deposition, and high visceral adiposity, but not BMI were significant predictors of survival by multivariate analysis[19]. Progressive skeletal muscle volume loss as measured by the psoas muscle index in patients undergoing locoregional therapy for HCC has also recently been associated with poor prognosis[20,21]. We acknowledge that the use of BMI as a variable to evaluate survival in patients with HCC has its limitations. However, our findings reinforce what one would anticipate contrasting BMI classes. The lean cohort, presenting more often without prior HCC screening and with more advanced tumors as we

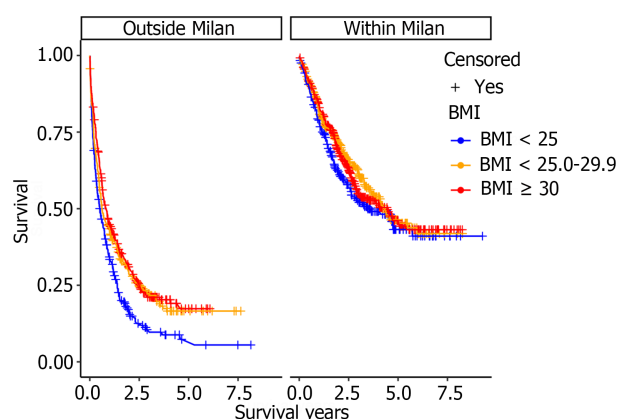


Figure 3 Patient survival after hepatocellular carcinoma diagnosis by body mass index class adjusted for Milan criteria. BMI: Body mass index class.

found in our analysis, likely comprises patients with cancer related cachexia. Rich *et al*[22] investigated the impact of cachexia defined as > 5% weight loss in the six months prior to HCC diagnosis compared to pre-cachexia (2%-5% weight loss) and stable/increased weight patients[22]. Approximately 25% of 600 patients met criteria for cachexia. Notably, BMI in the cachexia cohort was significantly lower than in the pre-cachexia and stable weight groups (25.4 *vs* 28.3 *vs* 28.5, $P < 0.001$). The authors found that cachexia was independently associated with increased mortality with a median overall survival of 11.3 months which is comparable to the 15.4 months we found in our lean cohort. Thus BMI, while not an ideal surrogate of cachexia, is still of consequence particularly when evaluated in a considerably larger cohort such as ours.

A strength of our study was including a sub-group survival analysis of BMI classes according to HCV, ALD, and NAFLD etiologies. Since 53% of the patients from the lean HCC cohort were classified as having a history of alcohol abuse, the interaction between alcohol use and HCV could have led to more aggressive tumors in the lean cohort which was comprised of 71% HCV-related HCCs. The differences in screening rates preceding HCC diagnosis among the three BMI cohorts is a natural limitation from a retrospective study and highlights the fundamental challenge in routine cirrhosis management, namely access to screening and the diagnostic accuracy of our screening methodology. A recent detailed investigation of the limitations of screening found that just over a third of patients diagnosed with HCC had regular outpatient care in the year before presenting with HCC[23]. Furthermore, the adequacy of ultrasound visualization for HCC screening was reported to be sub-optimal in nearly 20% of cirrhosis patients, particularly in obese patients with NAFLD and ALD[24]. While newer blood-based biomarkers hold promise and may improve upon ultrasound for surveillance[25,26], issues surrounding access to testing will undoubtedly persist.

CONCLUSION

Reconsidering the use of the term “obesity paradox” in patients with advanced HCC outside the Milan criteria is a salient conclusion to draw from our study. In fact, our results reinforce the larger impact of cancer related weight loss which is at least in part a result of delayed diagnoses. The present focus on creating a robust screening apparatus for our liver disease patients at risk for HCC is of critical importance to prevent the past from repeating itself[27].

ARTICLE HIGHLIGHTS

Research background

This study examines a large cohort of patients diagnosed with hepatocellular carcinoma (HCC) at two academic medical centers where liver transplantation is offered. Extensive data collection on patient and tumor variables were obtained to investigate the relationship between body mass index (BMI) classification and outcomes of patients with HCC.

Research motivation

The motivation for our research study is to explore how different BMI strata impact survival in patients with HCC.

Research objectives

It is apparent that a lean BMI in patients at the time of HCC diagnosis reflects advanced tumor burden but is not independently associated with worse survival.

Research methods

Patient and tumor characteristics were compared according to BMI < 25 kg/m² (lean), BMI 25-29.9 kg/m² (overweight), and BMI ≥ 30 kg/m². The Kaplan-Meier method was used to estimate survival by BMI categories. A multivariable model was performed to investigate risk factors (including the three BMI strata) associated with survival following HCC diagnosis.

Research results

Our research demonstrates interesting differences when comparing patients across BMI categories. For example, women with HCC were more likely to be in a higher BMI classification than men. Chronic hepatitis C infection was by far the most common reason for chronic liver disease in our cohort, and achieving sustained virologic response, not unexpectedly was associated with improved survival. We did not see significant differences in the Child-Pugh class or model for end stage liver disease scores according to the three different BMI. We did not see a survival difference by BMI class in our large cohort of 286 non-cirrhotic HCC cases patients.

Research conclusions

The relevant conclusion that one can draw from this study is the importance of identifying patients early in their presentation as our results confirm well established risk factors for reduced survival in patients with HCC trump the perceived protection of the "obesity paradox".

Research perspectives

The future research in this field needs to focus on improving patient access to screening for HCC to prevent a delay in diagnosis.

ACKNOWLEDGEMENTS

The following individuals have contributed to the data extraction: Keaton R Jones, MD, Lara Dakhoul, MD and Chelsey McShane, MD (Indiana University School of Medicine), and Patrick Roche (Atrium Health).

FOOTNOTES

Author contributions: deLemos AS, Gawrieh S, and Chalasani N conceived the study, analyzed data, and contributed to draft and final manuscript preparation; Zhao J, and Nguyen HM provided statistical analysis, critical appraisal of data, and manuscript editing; Patel M, Kookan B, Mathur K, Mazhar A, Burney H, and Kettler C assisted with tumor registry data entry and maintenance of database; McCarter M assisted with statistical analysis.

Supported by in part David W Crabb Professorship Endowment at Indiana University School of Medicine and an intramural grant from the Atrium Health Center for Outcomes Research and Evaluation (CORE) (to deLemos AS).

Institutional review board statement: Each participating site had local Institutional Review Board approval to conduct the study.

Informed consent statement: This study was retrospective and did not have any direct patient contact and was completely deidentified.

Conflict-of-interest statement: Dr. Gawrieh consulting: TransMedics, Pfizer, research grant support: Cirius, Galmed and Zydus. Dr. Chalasani had paid consulting activities with following companies in last 12 months: Abbvie, Madrigal, Galectin, Zydus, Boehringer-Ingelheim, and Altimmune. He and his institution receive research funding from DSM, Exact Sciences, and Galectin. The remaining authors have no conflicts of interests to declare in the last 12 months.

Data sharing statement: A data sharing agreement was established between Atrium Health and Indiana University School of Medicine for the purpose of compiling a de-identified patient registry.

STROBE statement: The authors have read the STROBE Statement – checklist of items, and the manuscript was prepared and revised according to the STROBE Statement – checklist of items.

Open-Access: This article is an open-access article that was selected by an in-house editor and fully peer-reviewed by external reviewers. It is distributed in accordance with the Creative Commons Attribution NonCommercial (CC BY-NC 4.0) license, which permits others to distribute, remix, adapt, build upon this work non-commercially, and license their derivative works on different terms, provided the original work is properly cited and the use is non-commercial. See: <https://creativecommons.org/licenses/by-nc/4.0/>

Country/Territory of origin: United States

ORCID number: Andrew Scott deLemos 0000-0003-1232-7986; Naga Chalasani 0000-0003-4082-3178; Samer Gawrieh 0000-0002-2056-4909.

S-Editor: Li L

L-Editor: A

P-Editor: Cai YX

REFERENCES

- 1 **Flemming JA**, Djerboua M, Groome PA, Booth CM, Terrault NA. NAFLD and Alcohol-Associated Liver Disease Will Be Responsible for Almost All New Diagnoses of Cirrhosis in Canada by 2040. *Hepatology* 2021; **74**: 3330-3344 [PMID: [34174003](#) DOI: [10.1002/hep.32032](#)]
- 2 **Estes C**, Razavi H, Loomba R, Younossi Z, Sanyal AJ. Modeling the epidemic of nonalcoholic fatty liver disease demonstrates an exponential increase in burden of disease. *Hepatology* 2018; **67**: 123-133 [PMID: [28802062](#) DOI: [10.1002/hep.29466](#)]
- 3 **Sung H**, Ferlay J, Siegel RL, Laversanne M, Soerjomataram I, Jemal A, Bray F. Global Cancer Statistics 2020: GLOBOCAN Estimates of Incidence and Mortality Worldwide for 36 Cancers in 185 Countries. *CA Cancer J Clin* 2021; **71**: 209-249 [PMID: [33538338](#) DOI: [10.3322/caac.21660](#)]
- 4 **McGlynn KA**, Petrick JL, El-Serag HB. Epidemiology of Hepatocellular Carcinoma. *Hepatology* 2021; **73**: 4-13 [PMID: [32319693](#) DOI: [10.1002/hep.31288](#)]
- 5 **Kanwal F**, Kramer JR, Li L, Dai J, Natarajan Y, Yu X, Asch SM, El-Serag HB. Effect of Metabolic Traits on the Risk of Cirrhosis and Hepatocellular Cancer in Nonalcoholic Fatty Liver Disease. *Hepatology* 2020; **71**: 808-819 [PMID: [31675427](#) DOI: [10.1002/hep.31014](#)]
- 6 **Lauby-Secretan B**, Scoccianti C, Loomis D, Grosse Y, Bianchini F, Straif K; International Agency for Research on Cancer Handbook Working Group. Body Fatness and Cancer--Viewpoint of the IARC Working Group. *N Engl J Med* 2016; **375**: 794-798 [PMID: [27557308](#) DOI: [10.1056/NEJMsrl606602](#)]
- 7 **Sohn W**, Lee HW, Lee S, Lim JH, Lee MW, Park CH, Yoon SK. Obesity and the risk of primary liver cancer: A systematic review and meta-analysis. *Clin Mol Hepatol* 2021; **27**: 157-174 [PMID: [33238333](#) DOI: [10.3350/cmh.2020.0176](#)]
- 8 **Cha B**, Yu JH, Jin YJ, Suh YJ, Lee JW. Survival Outcomes According to Body Mass Index in Hepatocellular Carcinoma Patient: Analysis of Nationwide Cancer Registry Database. *Sci Rep* 2020; **10**: 8347 [PMID: [32433488](#) DOI: [10.1038/s41598-020-65460-9](#)]
- 9 **Shachar SS**, Williams GR. The Obesity Paradox in Cancer-Moving beyond BMI-Response. *Cancer Epidemiol Biomarkers Prev* 2017; **26**: 981 [PMID: [28506968](#) DOI: [10.1158/1055-9965.EPI-17-0144](#)]
- 10 **Greenlee H**, Unger JM, LeBlanc M, Ramsey S, Hershman DL. Association between Body Mass Index and Cancer Survival in a Pooled Analysis of 22 Clinical Trials. *Cancer Epidemiol Biomarkers Prev* 2017; **26**: 21-29 [PMID: [27986655](#) DOI: [10.1158/1055-9965.EPI-15-1336](#)]
- 11 **Karagozian R**, Bhardwaj G, Wakefield DB, Baffy G. Obesity paradox in advanced liver disease: obesity is associated with lower mortality in hospitalized patients with cirrhosis. *Liver Int* 2016; **36**: 1450-1456 [PMID: [27037497](#) DOI: [10.1111/liv.13137](#)]
- 12 **Mahmud N**, Fricker Z, Hubbard RA, Ioannou GN, Lewis JD, Taddei TH, Rothstein KD, Serper M, Goldberg DS, Kaplan DE. Risk Prediction Models for Post-Operative Mortality in Patients With Cirrhosis. *Hepatology* 2021; **73**: 204-218 [PMID: [32939786](#) DOI: [10.1002/hep.31558](#)]
- 13 **Mathur K**, Mazhar A, Patel M, Dakhoul L, Burney H, Liu H, Nephew L, Chalasani N, deLemos A, Gawrich S. Changing Trends of Cirrhotic and Noncirrhotic Hepatocellular Carcinoma in the Era of Directly-Acting Antiviral Agents. *Clin Transl Gastroenterol* 2021; **12**: e00420 [PMID: [34730559](#) DOI: [10.14309/ctg.0000000000000420](#)]
- 14 **Marrero JA**, Kulik LM, Sirlin CB, Zhu AX, Finn RS, Abecassis MM, Roberts LR, Heimbach JK. Diagnosis, Staging, and Management of Hepatocellular Carcinoma: 2018 Practice Guidance by the American Association for the Study of Liver Diseases. *Hepatology* 2018; **68**: 723-750 [PMID: [29624699](#) DOI: [10.1002/hep.29913](#)]
- 15 **Edge SB**, Compton CC. The American Joint Committee on Cancer: the 7th edition of the AJCC cancer staging manual and the future of TNM. *Ann Surg Oncol* 2010; **17**: 1471-1474 [PMID: [20180029](#) DOI: [10.1245/s10434-010-0985-4](#)]
- 16 **Mazzaferro V**, Regalia E, Doci R, Andreola S, Pulvirenti A, Bozzetti F, Montalto F, Ammatuna M, Morabito A, Gennari L. Liver transplantation for the treatment of small hepatocellular carcinomas in patients with cirrhosis. *N Engl J Med* 1996; **334**: 693-699 [PMID: [8594428](#) DOI: [10.1056/NEJM199603143341104](#)]
- 17 **Mittal S**, El-Serag HB, Sada YH, Kanwal F, Duan Z, Temple S, May SB, Kramer JR, Richardson PA, Davila JA. Hepatocellular Carcinoma in the Absence of Cirrhosis in United States Veterans is Associated With Nonalcoholic Fatty Liver Disease. *Clin Gastroenterol Hepatol* 2016; **14**: 124-31.e1 [PMID: [26196445](#) DOI: [10.1016/j.cgh.2015.07.019](#)]
- 18 **Gawrich S**, Dakhoul L, Miller E, Scanga A, deLemos A, Kettler C, Burney H, Liu H, Abu-Sbeih H, Chalasani N, Wattacheril J. Characteristics, aetiologies and trends of hepatocellular carcinoma in patients without cirrhosis: a United States multicentre study. *Aliment Pharmacol Ther* 2019; **50**: 809-821 [PMID: [31475372](#) DOI: [10.1111/apt.15464](#)]
- 19 **Fujiwara N**, Nakagawa H, Kudo Y, Tateishi R, Taguri M, Watadani T, Nakagomi R, Kondo M, Nakatsuka T, Minami T, Sato M, Uchino K, Enooku K, Kondo Y, Asaoka Y, Tanaka Y, Ohtomo K, Shiina S, Koike K. Sarcopenia, intramuscular fat deposition, and visceral adiposity independently predict the outcomes of hepatocellular carcinoma. *J Hepatol* 2015; **63**: 131-140 [PMID: [25724366](#) DOI: [10.1016/j.jhep.2015.02.031](#)]
- 20 **Vallati GE**, Trobiano C, Teodoli L, Lai Q, Cappelli F, Ungania S, Catalano C, Lucatelli P. Sarcopenia Worsening One Month after Transarterial Radioembolization Predicts Progressive Disease in Patients with Advanced Hepatocellular Carcinoma. *Biology (Basel)* 2021; **10** [PMID: [34439960](#) DOI: [10.3390/biology10080728](#)]
- 21 **Fujita M**, Takahashi M, Hayashi M, Okai K, Abe K, Ohira H. Skeletal muscle volume loss during transarterial chemoembolization predicts poor prognosis in patients with hepatocellular carcinoma. *Hepatol Res* 2019; **49**: 778-786 [PMID: [30884044](#) DOI: [10.1111/hepr.13331](#)]
- 22 **Rich NE**, Phen S, Desai N, Mittal S, Yopp AC, Yang JD, Marrero JA, Iyengar P, Infante RE, Singal AG. Cachexia is Prevalent in Patients With Hepatocellular Carcinoma and Associated With Worse Prognosis. *Clin Gastroenterol Hepatol* 2022; **20**: e1157-e1169 [PMID: [34555519](#) DOI: [10.1016/j.cgh.2021.09.022](#)]
- 23 **Marquardt P**, Liu PH, Immergluck J, Olivares J, Arroyo A, Rich NE, Parikh ND, Yopp AC, Singal AG. Hepatocellular Carcinoma Screening Process Failures in Patients with Cirrhosis. *Hepatol Commun* 2021; **5**: 1481-1489 [PMID: [34510836](#) DOI: [10.1002/hep4.1735](#)]
- 24 **Schoenberger H**, Chong N, Fetzter DT, Rich NE, Yokoo T, Khatri G, Olivares J, Parikh ND, Yopp AC, Marrero JA, Singal AG. Dynamic Changes in Ultrasound Quality for Hepatocellular Carcinoma Screening in Patients With Cirrhosis. *Clin Gastroenterol Hepatol* 2022; **20**: 1561-1569.e4 [PMID: [34119640](#) DOI: [10.1016/j.cgh.2021.06.012](#)]
- 25 **Chalasani NP**, Porter K, Bhattacharya A, Book AJ, Neis BM, Xiong KM, Ramasubramanian TS, Edwards DK 5th, Chen I, Johnson S, Roberts

- LR, Kisiel JB, Reddy KR, Singal AG, Olson MC, Bruinsma JJ. Validation of a Novel Multitarget Blood Test Shows High Sensitivity to Detect Early Stage Hepatocellular Carcinoma. *Clin Gastroenterol Hepatol* 2022; **20**: 173-182.e7 [PMID: 34391922 DOI: 10.1016/j.cgh.2021.08.010]
- 26 Singal AG, Tayob N, Mehta A, Marrero JA, El-Serag H, Jin Q, Saenz de Viteri C, Fobar A, Parikh ND. GALAD demonstrates high sensitivity for HCC surveillance in a cohort of patients with cirrhosis. *Hepatology* 2022; **75**: 541-549 [PMID: 34618932 DOI: 10.1002/hep.32185]
- 27 Singal AG, Lok AS, Feng Z, Kanwal F, Parikh ND. Conceptual Model for the Hepatocellular Carcinoma Screening Continuum: Current Status and Research Agenda. *Clin Gastroenterol Hepatol* 2022; **20**: 9-18 [PMID: 32961340 DOI: 10.1016/j.cgh.2020.09.036]



Published by **Baishideng Publishing Group Inc**
7041 Koll Center Parkway, Suite 160, Pleasanton, CA 94566, USA

Telephone: +1-925-3991568

E-mail: office@baishideng.com

Help Desk: <https://www.f6publishing.com/helpdesk>

<https://www.wjgnet.com>

