

World Journal of *Clinical Cases*

World J Clin Cases 2024 March 16; 12(8): 1382-1548



Contents

Thrice Monthly Volume 12 Number 8 March 16, 2024

EDITORIAL

- 1382 Latest updates on structure and recommendations of cardiac rehabilitation programs in chronic heart failure
Kourek C, Briasoulis A, Magouliotis DE, Skoularigis J, Xanthopoulos A
- 1388 Immunoglobulin A glomerulonephropathy: A review
El Labban M, Surani S

ORIGINAL ARTICLE

Retrospective Study

- 1395 Serum proteins differentially expressed in gestational diabetes mellitus assessed using isobaric tag for relative and absolute quantitation proteomics
Cao WL, Yu CP, Zhang LL

Observational Study

- 1406 Effect of comprehensive nursing on the quality of life and swallowing function in individuals diagnosed with ischemic stroke
Hu HF, Sang YF, Xiao YQ

META-ANALYSIS

- 1416 Safety and effectiveness of butorphanol in epidural labor analgesia: A protocol for a systematic review and meta-analysis
Tang GC, He M, Huang ZZ, Cheng Y

CASE REPORT

- 1422 Left lower lobe sleeve resection for the clear cell variant of pulmonary mucoepidermoid carcinoma: A case report
Yu XH, Wang WX, Yang DS, Gong LH
- 1430 Lower extremity peripherally inserted central catheter placement ectopic to the ascending lumbar vein: A case report
Zhu XJ, Zhao L, Peng N, Luo JM, Liu SX
- 1437 Effect of foot reflexology on an infant with sensorineural hearing loss: A case report
Lee YJ, Chen MQ, Dong J
- 1442 Development of immature ovarian teratoma after mature teratoma in a girl with familial ovarian teratoma: A case report
Ju UC, Kang WD, Kim SM

- 1448** Metastatic clear cell sarcoma of the pancreas: A rare case report
Liu YJ, Zou C, Wu YY
- 1454** 3M syndrome patient with a novel mutation: A case report
Luo MR, Dai SM, Li Y, Wang Q, Liu H, Gao P, Liu JY, Chen J, Zhao SJ, Yin GY
- 1461** Appendiceal intussusception complicated by adenocarcinoma of the cecum: A case report
Long Y, Xiang YN, Huang F, Xu L, Li XY, Zhen YH
- 1467** Malignant triton tumor in the abdominal wall: A case report
Yang HJ, Kim D, Lee WS, Oh SH
- 1474** Multilocular thymic cysts can be easily misdiagnosed as malignant tumor on computer tomography: A case report
Sun J, Yang QN, Guo Y, Zeng P, Ma LY, Kong LW, Zhao BY, Li CM
- 1481** Diagnosis of poorly differentiated adenocarcinoma of the stomach by confocal laser endomicroscopy: A case report
Lou JX, Wu Y, Huhe M, Zhang JJ, Jia DW, Jiang ZY
- 1487** High-grade pancreatic intraepithelial neoplasia diagnosed based on changes in magnetic resonance cholangiopancreatography findings: A case report
Furuya N, Yamaguchi A, Kato N, Sugata S, Hamada T, Mizumoto T, Tamaru Y, Kusunoki R, Kuwai T, Kouno H, Kuraoka K, Shibata Y, Tazuma S, Sudo T, Kohno H, Oka S
- 1497** Chronic infectious unilateral giant thyroid cyst related to diabetes mellitus: A case report
Liu JB, Zhang SL, Jiang WL, Sun HK, Yang HC
- 1504** Multiple thoracic and abdominal foregut duplication cysts: A case report
Alsinan TA, Altokhais TI
- 1510** Advanced cervix cancer patient with chemotherapy-induced grade IV myelosuppression achieved complete remission with cadonilimab: A case report
Zhu R, Chen TZ, Sun MT, Zhu CR
- 1517** Detection of 4p16.3 deletion and 11p15.5p15.4 gain in a boy by comparative genomic hybridization array: A case report
Kaya I
- 1523** Eccrine porocarcinoma in the temple of an elderly woman: A case report
Wu ZW, Zhu WJ, Huang S, Tan Q, You C, Hu DG, Li LN
- 1530** Analysis and monitoring of drug therapy in a patient with peptic ulcer complicated by infection: A case report
Gou YP, Huang Y, Chen L, Zheng W, Zheng YH
- 1536** Primary gastroduodenal tuberculosis presenting as gastric outlet obstruction: A case report and review of literature
Ali AM, Mohamed YG, Mohamud AA, Mohamed AN, Ahmed MR, Abdullahi IM, Saydam T

- 1544** Clinical manifestations and the prenatal diagnosis of trisomy 7 mosaicism: Two case reports

Hou F, Li Y, Jin H

ABOUT COVER

Peer Reviewer of *World Journal of Clinical Cases*, Makram Koubaa, MD, Assistant Professor, Department of Infectious Diseases, Hedi Chaker University Hospital, Sfax 3029, Tunisia. makram.koubaa@gmail.com

AIMS AND SCOPE

The primary aim of *World Journal of Clinical Cases* (WJCC, *World J Clin Cases*) is to provide scholars and readers from various fields of clinical medicine with a platform to publish high-quality clinical research articles and communicate their research findings online.

WJCC mainly publishes articles reporting research results and findings obtained in the field of clinical medicine and covering a wide range of topics, including case control studies, retrospective cohort studies, retrospective studies, clinical trials studies, observational studies, prospective studies, randomized controlled trials, randomized clinical trials, systematic reviews, meta-analysis, and case reports.

INDEXING/ABSTRACTING

The WJCC is now abstracted and indexed in Science Citation Index Expanded (SCIE, also known as SciSearch®), Journal Citation Reports/Science Edition, Current Contents®/Clinical Medicine, PubMed, PubMed Central, Reference Citation Analysis, China Science and Technology Journal Database, and Superstar Journals Database. The 2023 Edition of Journal Citation Reports® cites the 2022 impact factor (IF) for WJCC as 1.1; IF without journal self cites: 1.1; 5-year IF: 1.3; Journal Citation Indicator: 0.26; Ranking: 133 among 167 journals in medicine, general and internal; and Quartile category: Q4.

RESPONSIBLE EDITORS FOR THIS ISSUE

Production Editor: Hua-Ge Yin, Production Department Director: Xu Guo, Editorial Office Director: Jin-Lei Wang.

NAME OF JOURNAL

World Journal of Clinical Cases

ISSN

ISSN 2307-8960 (online)

LAUNCH DATE

April 16, 2013

FREQUENCY

Thrice Monthly

EDITORS-IN-CHIEF

Bao-Gan Peng, Salim Surani, Jerzy Tadeusz Chudek, George Kontogeorgos, Maurizio Serati

EDITORIAL BOARD MEMBERS

<https://www.wjgnet.com/2307-8960/editorialboard.htm>

PUBLICATION DATE

March 16, 2024

COPYRIGHT

© 2024 Baishideng Publishing Group Inc

INSTRUCTIONS TO AUTHORS

<https://www.wjgnet.com/bpg/gerinfo/204>

GUIDELINES FOR ETHICS DOCUMENTS

<https://www.wjgnet.com/bpg/GerInfo/287>

GUIDELINES FOR NON-NATIVE SPEAKERS OF ENGLISH

<https://www.wjgnet.com/bpg/gerinfo/240>

PUBLICATION ETHICS

<https://www.wjgnet.com/bpg/GerInfo/288>

PUBLICATION MISCONDUCT

<https://www.wjgnet.com/bpg/gerinfo/208>

ARTICLE PROCESSING CHARGE

<https://www.wjgnet.com/bpg/gerinfo/242>

STEPS FOR SUBMITTING MANUSCRIPTS

<https://www.wjgnet.com/bpg/GerInfo/239>

ONLINE SUBMISSION

<https://www.f6publishing.com>



Primary gastroduodenal tuberculosis presenting as gastric outlet obstruction: A case report and review of literature

Abdihamid Mohamed Ali, Yahye Garad Mohamed, Abdirahman Ahmed Mohamud, Abdulkadir Nor Mohamed, Mohamed Rage Ahmed, Ismail Mohamud Abdullahi, Tuba Saydam

Specialty type: Medicine, research and experimental

Provenance and peer review:

Unsolicited article; Externally peer reviewed.

Peer-review model: Single blind

Peer-review report's scientific quality classification

Grade A (Excellent): 0
Grade B (Very good): 0
Grade C (Good): C
Grade D (Fair): 0
Grade E (Poor): 0

P-Reviewer: Abid S, Pakistan

Received: December 23, 2023

Peer-review started: December 23, 2023

First decision: January 9, 2024

Revised: January 12, 2024

Accepted: February 20, 2024

Article in press: February 20, 2024

Published online: March 16, 2024



Abdihamid Mohamed Ali, Abdirahman Ahmed Mohamud, Abdulkadir Nor Mohamed, Mohamed Rage Ahmed, Tuba Saydam, Department of General Surgery, Mogadishu Somali Turkey Recep Tayyip Erdogan Training and Research Hospital, Mogadishu 2526, Somalia

Yahye Garad Mohamed, Department of Radiology, Mogadishu Somali Turkey, Training and Research Hospital, Mogadishu 2526, Somalia

Ismail Mohamud Abdullahi, Department of Pathology, Mogadishu Somali Turkey Recep Tayyip Erdogan Training and Research Hospital, Mogadishu 2526, Somalia

Corresponding author: Abdihamid Mohamed Ali, MBChB, MD, MMed, Academic Editor, Academic Research, Lecturer, Department of General Surgery, Mogadishu Somali Turkey Recep Tayyip Erdogan Training and Research Hospital, Hodan Street, Mogadishu 2526, Somalia. abdihamidmohamed10@gmail.com

Abstract

BACKGROUND

Mycobacterium tuberculosis (TB) is the causative agent of TB, a chronic granulomatous illness. This disease is prevalent in low-income countries, posing a significant global health challenge. Gastrointestinal TB is one of the three forms. The disease can mimic other intra-abdominal conditions, leading to delayed diagnosis owing to the absence of specific symptoms. While gastric outlet obstruction (GOO) remains a frequent complication, its incidence has declined with the advent of proton pump inhibitors and *Helicobacter pylori* eradication therapy. Gastroduodenal TB can cause upper gastrointestinal hemorrhage, obstruction, and malignancy-like tumors.

CASE SUMMARY

A 23-year-old male presented with recurrent epigastric pain, distension, nausea, vomiting, and weight loss, prompting a referral to a gastroenterologist clinic. Endoscopic examination revealed distorted gastric mucosa and signs of chronic inflammation. However, treatment was interrupted, possibly owing to vomiting or comorbidities such as human immunodeficiency virus infection or diabetes. Subsequent surgical intervention revealed a dilated stomach and diffuse thickening of the duodenal wall. Resection revealed gastric wall effacement with TB.

CONCLUSION

Primary gastric TB is rare, frequently leading to GOO. Given its rarity, suspicions should be promptly raised when encountering relevant symptoms, often requiring surgical intervention for diagnosis and treatment.

Key Words: Tuberculosis; Gastrointestinal tuberculosis; Gastric outlet obstruction; Gastroduodenal tuberculosis; Case report

©The Author(s) 2024. Published by Baishideng Publishing Group Inc. All rights reserved.

Core Tip: Tuberculosis (TB) is a disease that has been around since ancient times and is still one of the top 10 causes of death globally. With a high incidence in lower-income countries. It is a global health concern, with gastrointestinal TB The third most common extrapulmonary form of TB. Here we present Primary gastroduodenal TB presenting as gastric outlet obstruction (GOO): A case report and review of the literature. The diagnosis of abdominal TB is often delayed since there are no distinct clinical signs and symptoms, and the disease can mimic other intra-abdominal pathologies. The most common causes of GOO include peptic ulcer disease and gastric cancer. TB should be included ddx when these dx is excluded. Surgery is inevitable when GOO is present at time of diagnosis and proceed by antitubercular treatment.

Citation: Ali AM, Mohamed YG, Mohamud AA, Mohamed AN, Ahmed MR, Abdullahi IM, Saydam T. Primary gastroduodenal tuberculosis presenting as gastric outlet obstruction: A case report and review of literature. *World J Clin Cases* 2024; 12(8): 1536-1543

URL: <https://www.wjgnet.com/2307-8960/full/v12/i8/1536.htm>

DOI: <https://dx.doi.org/10.12998/wjcc.v12.i8.1536>

INTRODUCTION

Tuberculosis (TB) is a chronic granulomatous disease caused by aerobic bacteria *Mycobacterium TB*[1,2].

Its global incidence is high in low-income nations, posing a significant health concern. TB has high morbidity and mortality rates despite its status as a treatable disease[3]. Abdominal TB ranks as the third most common extrapulmonary form[4].

Gastrointestinal TB (GI-TB) is one of the three forms of abdominal TB. The other types include visceral, peritoneal, and tuberculous lymphadenopathy[5].

Mycobacterium TB enters the gastrointestinal system *via* hematogenous spread, ingestion of contaminated sputum, or direct dissemination from infected adjacent lymph nodes and fallopian tubes[6,7].

Diagnosing abdominal TB is often hindered by the absence of distinct clinical signs and symptoms, leading to delayed identification because the disease can mimic other intra-abdominal pathologies[8,9].

Correcting the general status of patients with a confirmed diagnosis of GOO, administering intravenous fluids to correct an electrolyte imbalance, and performing gastric decompression by inserting a nasogastric tube are all essential to the initial management of these patients[10]. The most common causes of gastric outlet obstruction (GOO) are peptic ulcer disease (PUD) and gastric cancer. However, the frequency of GOO owing to PUD has declined since the development of proton pump inhibitors and *Helicobacter* eradication therapy.

Gastric bezoars, pancreatitis-related fluid collection, caustic ingestion, massive gastric polyps, Crohn's disease, and complications following gastric surgery contribute to GOO[11].

Gastroduodenal TB (GD-TB) presents with various manifestations, including upper gastrointestinal hemorrhage, obstruction, and gastric or periampullary tumors suggestive of malignancy[12].

Similar to our patient, most individuals with GD-TB exhibit signs of GOO, often attributed not only to intrinsic duodenal lesions but also to extrinsic compression by tuberculous lymph nodes[13].

Here, we present a case of GD-TB-associated GOO in a previously healthy 23-year-old patient who exhibited no signs of pulmonary TB.

CASE PRESENTATION

Chief complaints

A 23-year-old male patient came to the Department of Surgery with recurrent epigastric pain, vomiting, and weight loss that had persisted for a year despite the patient having no prior history of chronic illness.

History of present illness

The patient had a year-long history of recurrent epigastric pain, distension, low appetite, nausea, vomiting, and weight loss. He did not mention any fever, jaundice, or changes in bowel habits. Hemostasis and cough were absent, and there were no notable findings from the assessment of the other systems.

History of past illness

The patient had experienced similar symptoms during a prior stay in South Africa eight months earlier, during which an endoscopy revealed distortions and chronic inflammatory changes in the distal gastric mucosa without evidence of *Helicobacter pylori* (*H. pylori*) infection. Subsequently, anti-tubercular medication was planned, but the patient ceased treatment after one week owing to intractable vomiting.

Personal and family history

There was no family history of similar conditions or TB.

Physical examination

The patient presented with normal vital signs, absence of pallor, and no cervical, axillary, or inguinal lymphadenopathy.

Clear chest examination findings were noted. Upon abdominal examination, the abdomen was soft and non-tender with mild distension, and no masses, organomegaly, or ascites were noted.

Laboratory examinations

C-reactive protein 200 mg/L, stool *H. Pylori*-negative. No abnormalities were found in routine blood and urine analyses.

Imaging examinations

An abdominal contrast-enhanced computed tomography (CT) scan revealed gastric distension and diffuse wall thickening in the first and second parts of the duodenum. A thoracic CT scan showed no evidence of prior TB sequelae (Figure 1). Upper endoscopy was subsequently performed, revealing longitudinal hyperemic mucosal streaks in the gastric corpus and antrum, along with multiple glandular nodules and severely inflamed mucosa in the post-pyloric duodenum. Additionally, obstruction was observed at the junction of the first and second parts of the duodenum.

A gastric biopsy revealed chronic gastritis with severe inflammation, absence of metaplasia and dysplasia, and a positive result for *H. pylori*.

The patient was admitted for optimization of preoperative fitness in preparation for surgery.

FINAL DIAGNOSIS

Primary GD-TB.

TREATMENT

A decision was made to relieve the obstruction surgically. Intraoperatively, the following findings were noted: Dilation of the stomach and diffuse wall thickening of the duodenum, along with multiple enlarged mesenteric lymph nodes (located at the lesser curvature, transverse colon mesentery, small bowel mesentery, paraduodenal area, and interaortocaval region). Subsequently, antrectomy and Roux-en-Y reconstruction with gastrojejunostomy were performed, along with lymph node dissection (Figure 2).

The pathology report from the resected distal part of the antrum and lymph nodes revealed findings indicative of gastric TB, characterized by effacement of the gastric wall architecture and numerous caseating granulomatous inflammation. Specifically, the distal margins displayed positivity for granulomatous inflammation. Additionally, 12 Lymph nodes exhibited suppurative and non-suppurative granulomatous inflammation, further supporting the TB diagnosis. Periodic Acid-Schiff stain stains yielded negative results for fungal hyphae. These findings were consistent with GD-TB (Figure 3). Notably, cytology analysis for Acid Fast Bacteria staining and Gene Xpert testing were not pursued owing to the absence of peritoneal ascites detected during the operation.

OUTCOME AND FOLLOW-UP

The postoperative course was uneventful, and the patient was discharged from the hospital following successful tolerance of full enteral feeding. Plans were made for follow-up visits at the polyclinic and referral to a TB center to initiate anti-tubercular treatment. Currently, the patient is adhering to the anti-tubercular medication regimen well and has experienced no adverse effects.

DISCUSSION

GI-TB most frequently affects the ileocecal area, with the colon and jejunum following closely after. A total of 64% of GI-TB cases are caused by jejunal and ileocecal TB[14]. However, the esophagus, stomach, and duodenum are rarely affected. The duodenum and gastric are the primary sites of involvement for gastric TB.

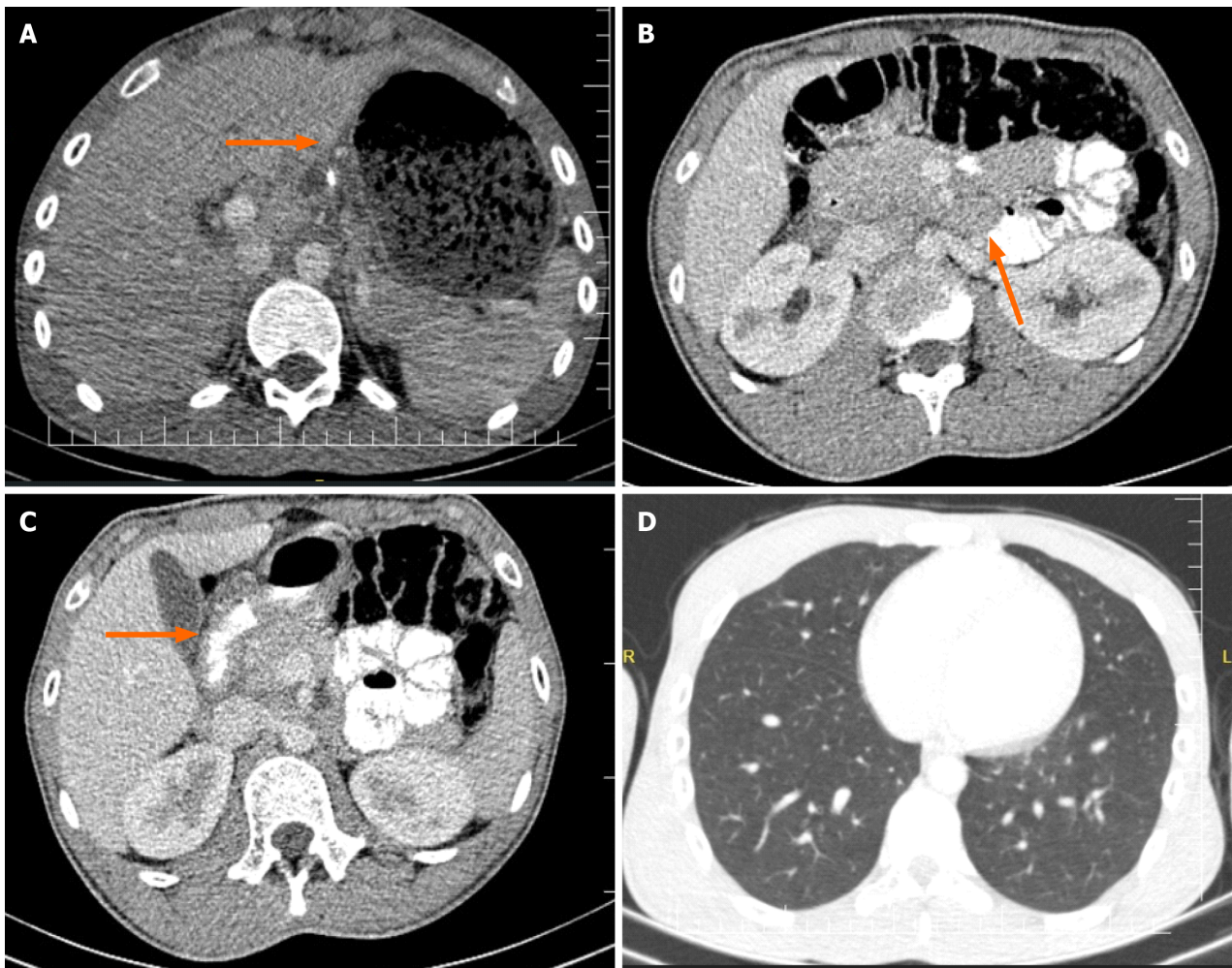


Figure 1 Oral and intravenous contrast-enhanced thoraco-abdominal computed tomography scans. A: It demonstrates gastric distension; B: It accompanied by multiple mesenteric lymphadenopathies; C: Duodenal wall thickening and nearly complete obstruction in the second part of the duodenum; D: Thoracic computed tomography findings indicated normalcy, with no active pulmonary tuberculosis or sequelae observed.

Primary and isolated stomach TB is exceptionally rare, documented only in very few cases in the literature. A total of 0.4%–2% of all GI-TB cases are associated with primary gastric TB, while 2%–2.5% are associated with primary duodenal TB[15].

Several factors contribute to the low frequency of gastric TB, including the bactericidal properties of gastric acid, the presence of thick and intact gastric mucosa, and the absence of lymphoid structures in the gastric mucosa[14,16]. Treatment with H2 blockers increases the likelihood of involvement of the lesser curvature and pylorus in gastric TB, often presenting as ulcerating lesions[5]. Manifestations such as pyloric stenosis, miliary tubercles, and hypertrophic variations may also occur[14]. Gastric TB is frequently associated with TB lymphadenitis, as observed in cases where peripancreatic lymph nodes are involved, alongside visible ulcerative lesions in the prepyloric region.

The third part of the duodenum is commonly affected in cases of primary duodenal TB.

Both intrinsic and extrinsic factors can contribute to duodenal involvement[17]. Extrinsic involvement is most prevalent and is often related to lymphadenopathy in the duodenum's C-loop. Intrinsic variations may manifest as ulcerative, hypertrophic, or ulcer hypertrophic forms, potentially leading to fistula or stricture formation.

Various modalities contribute to GI-TB involvement, including ingestion of contaminated milk or food (primary TB), ingestion of contaminated sputum (secondary TB), hematogenous spread from a distant TB focus, or contiguous dissemination from infected neighboring foci *via* the lymphatic channels[18,19]. Given the absence of evidence of extra-abdominal TB in our case, we believe the infection to be primary gastric TB involving the peripancreatic lymph node.

GD-TB presents with nonspecific clinical characteristics commonly associated with weight loss, epigastric pain, and fever. In certain cases, GOO may be the presenting feature. Gastric TB may also mimic lymphoma or carcinoma, complicating the differential diagnosis. A study by Rao *et al*[12] conducted at a single center in India reported that among 23 patients with histologically confirmed GD-TB, vomiting (60.8%) and epigastric pain (56.5%) were the most prevalent presenting symptoms, with characteristics of GOO observed in 61% of cases (14 patients)[12]. While two patients had pyloric stenosis, the remaining twelve experienced obstruction owing to duodenal stricture. Additionally, out of the 23 patients studied, four had diabetes mellitus, and none were human immunodeficiency virus-positive. Similar to this study, our patient presented with vomiting, epigastric pain, and early satiety, suggestive of GOO.

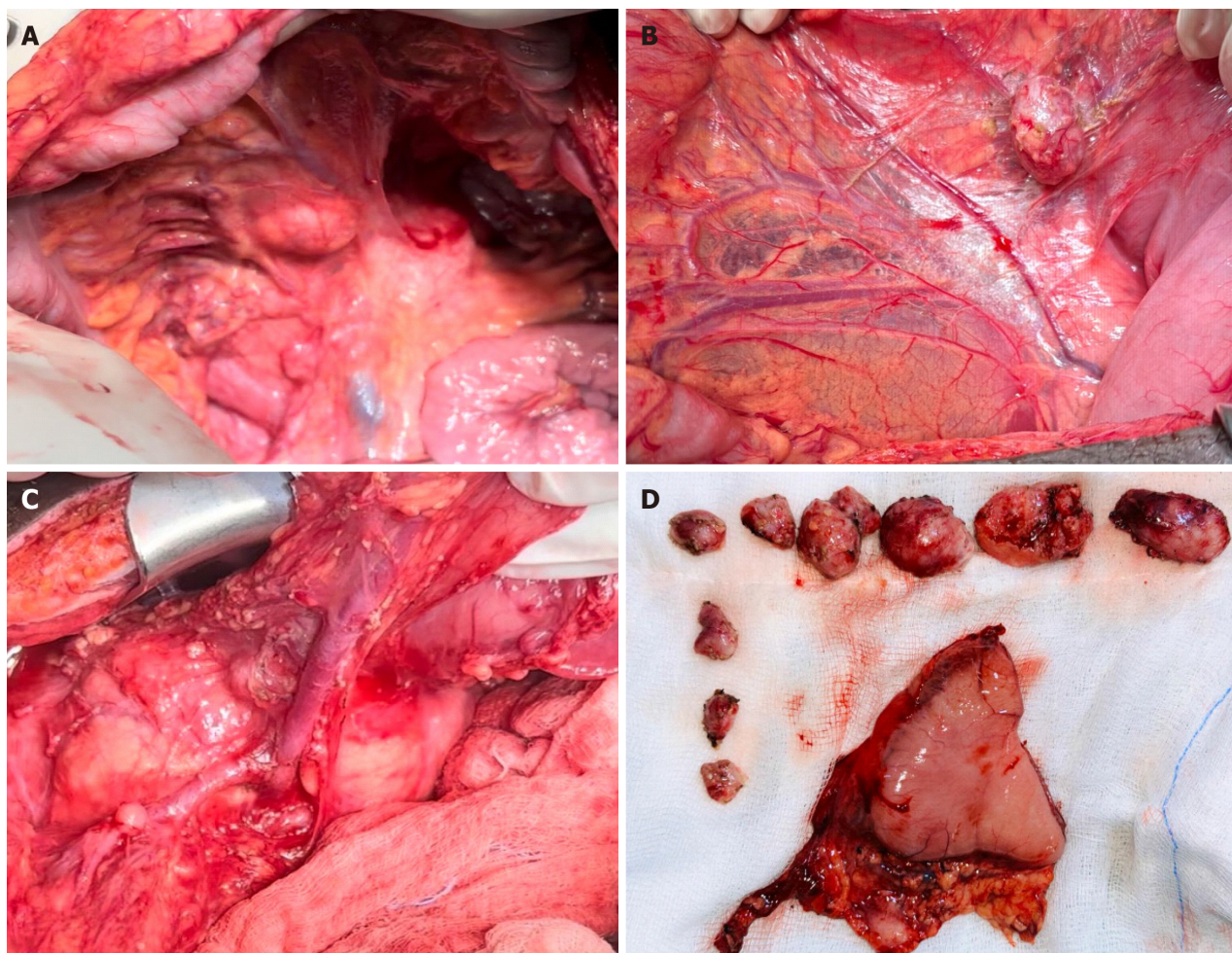


Figure 2 Intraoperative finding. A-C: An intense inflammatory mass causing duodenal obstruction alongside multiple pathologic lymph nodes observed in the mesenteric and paraduodenal regions; D: Resected distal gastric and dissected lymph nodes.

The lack of specific clinical symptoms and diagnostic indicators often leads to underdiagnosis of GD-TB.

Histopathological examination of gastroduodenal biopsy specimens obtained *via* endoscopy remains the gold standard for diagnosing GD-TB. However, owing to the submucosal nature of granulomatous lesions, they are often challenging to identify, even in biopsy samples. A review revealed that granulomas were detected in only seven out of 27 patients who underwent endoscopic biopsy for duodenal TB[20].

Similarly, Rao *et al*[12] reported positive biopsies in their study in only 2 out of 20 patients.

Complications of GD-TB may include GOO, hemorrhage, and perforation, which can significantly increase morbidity [11].

As outlined in a review by Rao *et al*[12], in cases of TB-related GOO, truncal vagotomy and gastrojejunostomy (with or without feeding jejunostomy) were performed in twelve out of fourteen patients[12].

While abdominal TB can affect individuals of any age, there is a significant predominance among women, particularly those between the ages of 25 and 45[21]. In patients with GD-TB presenting with obstruction or mass, the yield of endoscopic biopsy is typically low[22,23].

Dyspeptic symptoms suggestive of gastric lesions often lead to suspicion of peptic ulcer, while weight loss may prompt consideration of gastric cancer as the primary diagnosis.

Up to 20% of patients undergoing examinations may exhibit evidence of pulmonary TB on chest X-ray[24], and duodenal bulb deformity may be detected during upper gastrointestinal endoscopy[25]. Because ulcerated lesions predominantly reside in the submucosa, conventional endoscopic biopsies often yield poor results and rarely uncover granulomas[21].

Although preoperative diagnosis of duodenal TB is exceedingly rare[17,26], Debi *et al*[14] have demonstrated that an endoscopic ultrasound is a valuable modality for characterizing lesions and obtaining samples for cytological confirmation[1]. In cases where histological diagnosis cannot be established by other means, intraoperative fine-needle aspiration cytology may be employed to obtain samples from the affected duodenal section[27].

Most lesions diagnosed with TB before surgery respond well to appropriate antitubercular treatment and may not require surgical intervention[28]. Antituberculosis medication therapy is the cornerstone of medical treatment for gastric TB. However, surgery becomes necessary for patients experiencing severe GOO owing to hypertrophic TB, with antituberculosis medication therapy following surgery[29].

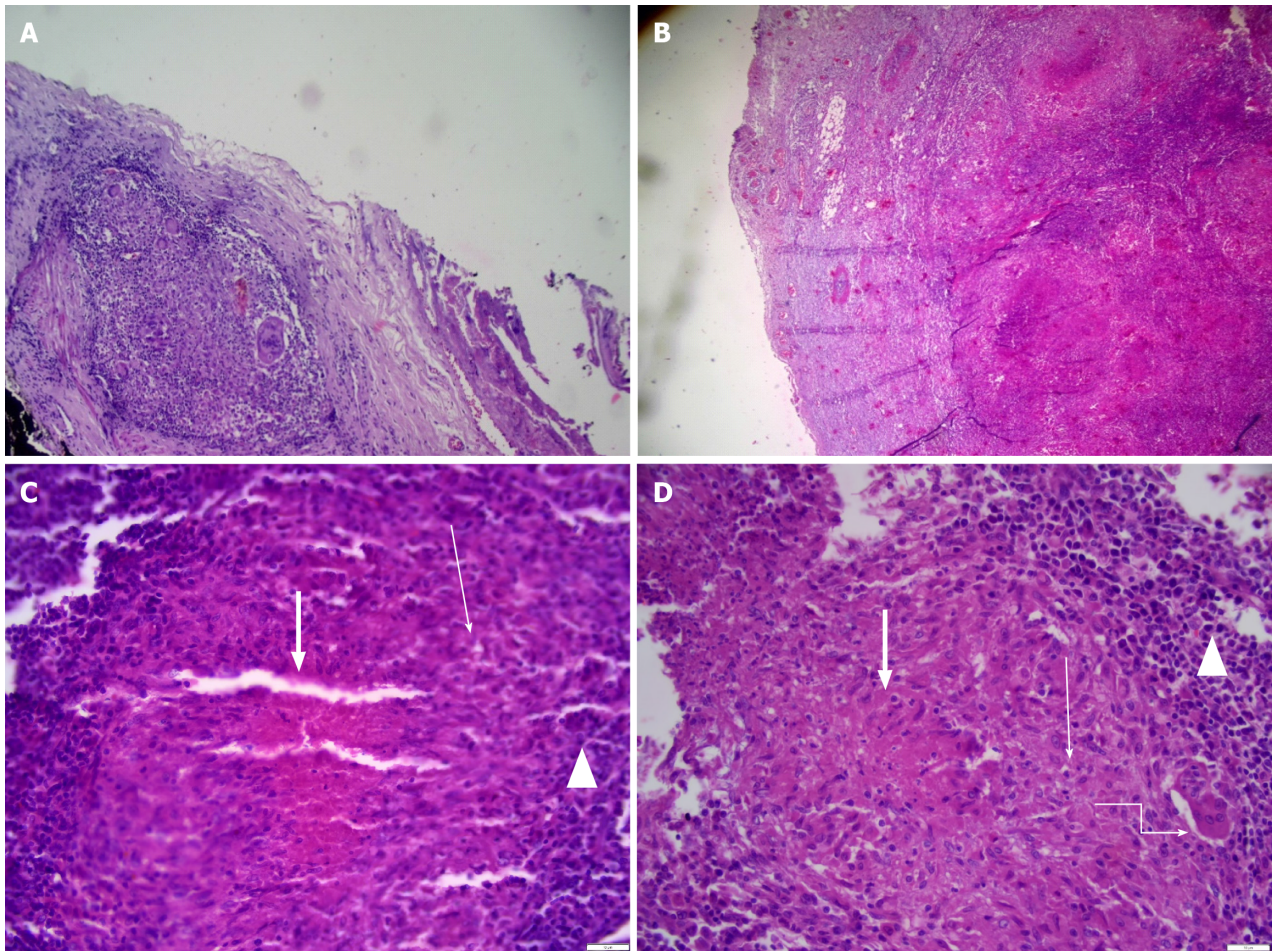


Figure 3 Histopathology. A: Granulomatous inflammation and giant cells on the serosal surface; B: Lymph node parenchyma with effacement of multiple large tuberculoid necrotizing granuloma; C: Lymph node parenchyma with effacement of large tuberculoid necrotizing granuloma (thick arrows) epithelioid histiocytes (thin arrows) peripheral lymphocytes (triangles); D: Lymph node with tuberculoid necrotizing granuloma (thick arrows) and Langerhans giant cells (thin arrows) and peripheral lymphocytes (triangles).

In cases of GOO, gastrojejunostomy is preferred over pyloroplasty owing to the severe fibrosis around the pyloro-duodenal junction, which may compromise the safety of pyloroplasty.

This study adheres to the surgical case report guidelines 2016 criteria[30].

CONCLUSION

Primary gastric TB is rare and often poses a diagnostic challenge, particularly when it presents as GOO. In regions where TB is prevalent, heightened suspicion is warranted. Surgery is often essential for diagnosis and treatment.

FOOTNOTES

Author contributions: Upon the patient's admission, Ali AM, Mohamed AN, and Ahmed MR conducted relevant investigations and provided postoperative follow-up. The manuscript was written by Mohamed YG and Ali AM, who contributed to drafting, English editing, design, and coordination; All authors reviewed and approved the final version.

Informed consent statement: The patient provided informed written consent to publish this case study and accompanying photographs.

Conflict-of-interest statement: All the authors report no relevant conflicts of interest for this article.

CARE Checklist (2016) statement: The authors have read CARE Checklist (2016), and the manuscript was prepared and revised according to CARE Checklist (2016).

Open-Access: This article is an open-access article that was selected by an in-house editor and fully peer-reviewed by external reviewers. It is distributed in accordance with the Creative Commons Attribution NonCommercial (CC BY-NC 4.0) license, which permits others to

distribute, remix, adapt, build upon this work non-commercially, and license their derivative works on different terms, provided the original work is properly cited and the use is non-commercial. See: <https://creativecommons.org/licenses/by-nc/4.0/>

Country/Territory of origin: Somalia

ORCID number: Abdihamid Mohamed Ali 0000-0003-1210-1901; Yahye Garad Mohamed 0000-0002-3719-3729; Abdirahman Ahmed Mohamud 0000-0001-7889-7231; Abdulkadir Nor Mohamed 0000-0003-1726-534X; Mohamed Rage Ahmed 0009-0001-4191-0102; Ismail Mohamud Abdullahi 0000-0001-9276-4558; Tuba Saydam 0000-0003-2571-7879.

S-Editor: Li L

L-Editor: A

P-Editor: Zhao YQ

REFERENCES

- Chai Q, Zhang Y, Liu CH. Mycobacterium tuberculosis: An Adaptable Pathogen Associated With Multiple Human Diseases. *Front Cell Infect Microbiol* 2018; **8**: 158 [PMID: 29868514 DOI: 10.3389/fcimb.2018.00158]
- Arega B, Mersha A, Minda A, Getachew Y, Sitotaw A, Gebeyehu T, Agunie A. Epidemiology and the diagnostic challenge of extra-pulmonary tuberculosis in a teaching hospital in Ethiopia. *PLoS One* 2020; **15**: e0243945 [PMID: 33320897 DOI: 10.1371/journal.pone.0243945]
- Guled AY, Elmi AH, Abdi BM, Rage AMA, Ali FM, Abdinur AH, Ali AA, Ahmed AA, Ibrahim KA, Mohamed SO, Mire FA, Adem OA, Osman AD. Prevalence of Rifampicin Resistance and Associated Risk Factors among Suspected Multidrug Resistant Tuberculosis Cases in TB Centers Mogadishu-Somalia: Descriptive Study. *Open Journal of Respiratory Diseases* 2016; **6**: 15-24 [DOI: 10.4236/ojrd.2016.62003]
- Eraksoy H. Gastrointestinal and Abdominal Tuberculosis. *Gastroenterol Clin North Am* 2021; **50**: 341-360 [PMID: 34024445 DOI: 10.1016/j.gtc.2021.02.004]
- Rasheed S, Zinicola R, Watson D, Bajwa A, McDonald PJ. Intra-abdominal and gastrointestinal tuberculosis. *Colorectal Dis* 2007; **9**: 773-783 [PMID: 17868413 DOI: 10.1111/j.1463-1318.2007.01337.x]
- Awasthi S, Saxena M, Ahmad F, Kumar A, Dutta S. Abdominal Tuberculosis: A Diagnostic Dilemma. *J Clin Diagn Res* 2015; **9**: EC01-EC03 [PMID: 26155480 DOI: 10.7860/JCDR/2015/13350.5887]
- Azad KAK, Chowdhury T. Extrapulmonary Tuberculosis (Eptb): An Overview. *Bangladesh Journal of Medicine* 2022; **33**: 130-137 [DOI: 10.3329/bjm.v33i2.59285]
- Ahmad QA, Sarwar MZ, Fatimah N, Ahmed AS, Changaizi SH, Ayyaz M. Acute Presentation and Management of Abdominal Tuberculosis. *J Coll Physicians Surg Pak* 2020; **30**: 129-133 [PMID: 32036817 DOI: 10.29271/jcpsp.2020.02.129]
- Govil S, Govil S, Eapen A. Imaging of Abdominal Solid Organ and Peritoneal Tuberculosis. In: Ladeb MF, Peh WCG, editor. *Imaging of Tuberculosis*. Cham: Springer International Publishing, 2022: 225-249 [DOI: 10.1007/978-3-031-07040-2_9]
- Papanikolaou IS, Siersema PD. Gastric Outlet Obstruction: Current Status and Future Directions. *Gut Liver* 2022; **16**: 667-675 [PMID: 35314520 DOI: 10.5009/gnl210327]
- Maliyakkal AM, Naushad VA, Shaath NM, Valiyakath HS, Farfar KL, Mohammed AM, Ahmed M. Gastroduodenal Tuberculosis Presenting as a Gastric Outlet Obstruction: A Case Report. *Cureus* 2023; **15**: e49436 [PMID: 38149133 DOI: 10.7759/cureus.49436]
- Rao YG, Pande GK, Sahni P, Chattopadhyay TK. Gastroduodenal tuberculosis management guidelines, based on a large experience and a review of the literature. *Can J Surg* 2004; **47**: 364-368 [PMID: 15540690]
- Molla YD, Kassa SA, Tadesse AK. Rare case of duodenal tuberculosis causing gastric outlet obstruction, a case report. *Int J Surg Case Rep* 2023; **105**: 108080 [PMID: 37001373 DOI: 10.1016/j.ijscr.2023.108080]
- Debi U, Ravisanakar V, Prasad KK, Sinha SK, Sharma AK. Abdominal tuberculosis of the gastrointestinal tract: revisited. *World J Gastroenterol* 2014; **20**: 14831-14840 [PMID: 25356043 DOI: 10.3748/wjg.v20.i40.14831]
- Padma V, Anand NN, Rajendran SM, Gurukul S. Primary tuberculosis of stomach. *J Indian Med Assoc* 2012; **110**: 187-188 [PMID: 23029952]
- Choudhury A, Dhillon J, Sekar A, Gupta P, Singh H, Sharma V. Differentiating gastrointestinal tuberculosis and Crohn's disease- a comprehensive review. *BMC Gastroenterol* 2023; **23**: 246 [PMID: 37468869 DOI: 10.1186/s12876-023-02887-0]
- Bhatti A, Hussain M, Kumar D, Samo KA. Duodenal tuberculosis. *J Coll Physicians Surg Pak* 2012; **22**: 111-112 [PMID: 22313650]
- Vlad RM, Smădeanu ER, Becheanu G, Darie R, Păcurar D. The diagnostic challenges in a child with intestinal tuberculosis. *Rom J Morphol Embryol* 2021; **62**: 1057-1061 [PMID: 35673826 DOI: 10.47162/RJME.62.4.19]
- Tinsa F, Essaddam L, Fitouri Z, Brini I, Douira W, Ben Becher S, Boussetta K, Bousnina S. Abdominal tuberculosis in children. *J Pediatr Gastroenterol Nutr* 2010; **50**: 634-638 [PMID: 20386326 DOI: 10.1097/MPG.0b013e3181b6a57b]
- Chaudhary A, Bhan A, Malik N, Dilawari JB, Khanna SK. Cholechocho-duodenal fistula due to tuberculosis. *Indian J Gastroenterol* 1989; **8**: 293-294 [PMID: 2599567]
- Lazarus AA, Thilagar B. Abdominal tuberculosis. *Dis Mon* 2007; **53**: 32-38 [PMID: 17224321 DOI: 10.1016/j.disamonth.2006.10.004]
- Shah J, Maity P, Kumar-M P, Jena A, Gupta P, Sharma V. Gastroduodenal tuberculosis: a case series and a management focused systematic review. *Expert Rev Gastroenterol Hepatol* 2021; **15**: 81-90 [PMID: 32878489 DOI: 10.1080/17474124.2020.1816823]
- Udgirkar S, Surude R, Zanwar V, Chandnani S, Contractor Q, Rath P. Gastroduodenal Tuberculosis: A Case Series and Review of Literature. *Clin Med Insights Gastroenterol* 2018; **11**: 1179552218790566 [PMID: 30083063 DOI: 10.1177/1179552218790566]
- Souhaib A, Magherbi H, Yacine O, Hadad A, Alia Z, Chaker Y, Kacem MJ. Primary duodenal tuberculosis complicated with perforation: A review of literature and case report. *Ann Med Surg (Lond)* 2021; **66**: 102392 [PMID: 34040776 DOI: 10.1016/j.amsu.2021.102392]
- Tandon RK, Pastakia B. Duodenal tuberculosis as seen by duodenoscopy. *Am J Gastroenterol* 1976; **66**: 483-486 [PMID: 1008051]
- Padmanabhan H, Rothnie A, Singh P. An unusual case of gastric outlet obstruction caused by tuberculosis: challenges in diagnosis and

- treatment. *BMJ Case Rep* 2013; **2013** [PMID: [23704423](#) DOI: [10.1136/bcr-2012-008277](#)]
- 27 **Aljafari AS**, Khalil EA, Elsiddig KE, El Hag IA, Ibrahim ME, Elsafi ME, Hussein AM, Elkhidir IM, Sulaiman GS, Elhassan AM. Diagnosis of tuberculous lymphadenitis by FNAC, microbiological methods and PCR: a comparative study. *Cytopathology* 2004; **15**: 44-48 [PMID: [14748791](#) DOI: [10.1111/j.1365-2303.2003.00119.x](#)]
- 28 **Gilinsky NH**, Marks IN, Kottler RE, Price SK. Abdominal tuberculosis. A 10-year review. *S Afr Med J* 1983; **64**: 849-857 [PMID: [6635879](#)]
- 29 **Chakinala RC**, Khatri AM. Gastrointestinal Tuberculosis. 2023 May 1. In: StatPearls [Internet]. Treasure Island (FL): StatPearls Publishing; 2024 Jan- [PMID: [32310575](#)]
- 30 **Agha RA**, Fowler AJ, Saeta A, Barai I, Rajmohan S, Orgill DP; SCARE Group. The SCARE Statement: Consensus-based surgical case report guidelines. *Int J Surg* 2016; **34**: 180-186 [PMID: [27613565](#) DOI: [10.1016/j.ijssu.2016.08.014](#)]



Published by **Baishideng Publishing Group Inc**
7041 Koll Center Parkway, Suite 160, Pleasanton, CA 94566, USA

Telephone: +1-925-3991568

E-mail: office@baishideng.com

Help Desk: <https://www.f6publishing.com/helpdesk>

<https://www.wjgnet.com>

