

## Identification of circulating CD90<sup>+</sup> CD73<sup>+</sup> cells in cirrhosis of liver

Mitnala Sasikala, Pugazhelthi Surya, Gaddipati Radhika, Pondugala Pavan Kumar, Mekala Subba Rao, Rathindra Mohan Mukherjee, Padaki Nagaraja Rao, D Nageshwar Reddy

Mitnala Sasikala, Pugazhelthi Surya, Gaddipati Radhika, Pondugala Pavan Kumar, Mekala Subba Rao, Rathindra Mohan Mukherjee, Institute of Basic Sciences and Translational Research, Asian Health Care Foundation, Hyderabad 500082, India

Padaki Nagaraja Rao, D Nageshwar Reddy, Asian Institute of Gastroenterology, Hyderabad 500082, India

Author contributions: Sasikala M designed the study, analyzed data and wrote the manuscript; Surya P, Radhika G and Pavan Kumar P performed the majority of experiments; Rao MS and Mukherjee RM were involved in editing the manuscript; Rao PN and Reddy DN co-ordinated and were involved in selection of patients and final approval of the manuscript.

Supported by Asian Health Care Foundation

Correspondence to: Mitnala Sasikala, PhD, Senior Scientist, Institute of Basic Sciences and Translational Research, Asian Healthcare Foundation, 6-3-661, Somajiguda, Hyderabad 500082, India. [aigres.mit@gmail.com](mailto:aigres.mit@gmail.com)

Telephone: +91-40-23378888-702 Fax: +91-40-23324255

Received: October 9, 2010 Revised: January 15, 2011

Accepted: January 25, 2011

Published online: July 26, 2011

### Abstract

**AIM:** To identify circulating CD90<sup>+</sup> CD73<sup>+</sup> CD45<sup>-</sup> cells and evaluate their *in vitro* proliferating abilities.

**METHODS:** Patients with cirrhosis ( $n = 43$ ), and healthy volunteers ( $n = 40$ ) were recruited to the study. Mononuclear cells were isolated and cultured from the peripheral blood of controls and cirrhosis patients. Fibroblast-like cells that appeared in cultures were analyzed for morphological features, enumerated by flow cytometry and confirmed by immunocytochemistry (ICC). Colony forming efficiency (CFE) of these cells was assessed and expressed as a percentage.

**RESULTS:** In comparison to healthy volunteers, cells obtained from cirrhotic patients showed a significant

increase ( $P < 0.001$ ) in the percentage of CD90<sup>+</sup> CD73<sup>+</sup> CD45<sup>-</sup> cells in culture. Cultured cells also showed 10 fold increases in CFE. Flow cytometry and ICC confirmed that the proliferating cells expressed CD90<sup>+</sup> CD73<sup>+</sup> in the cultures from cirrhosis patients.

**CONCLUSION:** These results indicate the presence of circulating CD90<sup>+</sup> CD73<sup>+</sup> CD45<sup>-</sup> cells in patients with liver cirrhosis that have the potential to proliferate at a higher rate.

© 2011 Baishideng. All rights reserved.

**Key words:** CD90<sup>+</sup> CD73<sup>+</sup> CD45<sup>-</sup> cells; Liver cirrhosis; Proliferation; Colony forming efficiency

**Peer reviewers:** Guangwen Ren, PhD, Department of Molecular Genetics, Microbiology and Immunology, Robert Wood Johnson Medical School-UMDNJ, 675 Hoes Lane West, Piscataway, NJ 08854, United States; Maria P De Miguel, PhD, Cell Engineering Laboratory, La Paz Hospital, Paseo Castellana 261, Anatomía Patológica, Edificio Maternidad planta 1, E-28046 Madrid, Spain; Umberto Galderisi, PhD, Associate Professor, Department of Experimental Medicine, Second University of Naples, Via L. De Crecchio 7, 80138 Napoli, Italy

Sasikala M, Surya P, Radhika G, Pavan Kumar P, Rao MS, Mukherjee RM, Rao PN, Reddy DN. Identification of circulating CD90<sup>+</sup> CD73<sup>+</sup> cells in cirrhosis of liver. *World J Stem Cells* 2011; 3(7): 63-69 Available from: URL: <http://www.wjgnet.com/1948-0210/full/v3/i7/63.htm> DOI: <http://dx.doi.org/10.4252/wjsc.v3.i7.63>

### INTRODUCTION

Cirrhosis of liver is a progressive disease characterized by replacement of liver parenchyma by fibrous tissue, parenchymal nodules and vascular distortion leading to major systemic complications and end stage liver disease<sup>[1]</sup>. Cir-

rhosis often progresses to hepatocellular carcinoma, the fifth most common cancer in the world and comprises more than 90% of human liver cancers<sup>[2,3]</sup>. Although alcohol and chronic viral hepatitis are the main causes of liver cirrhosis<sup>[4]</sup>, cryptogenic cirrhosis is encountered in 5%-30% of cirrhotic patients<sup>[5]</sup>. Cirrhosis is an irreversible condition and liver transplantation is the only available treatment. Shortage of donor organs demands new strategies for treating end stage liver disease. Cell based therapy has emerged as a novel approach in treating many human diseases including chronic liver disease. Expansion of embryonic stem (ES) cells, existing hepatocytes from the liver, and progenitor cells from bone marrow are techniques currently under investigation for regeneration of hepatocytes. However, therapeutic use of hepatocytes and ES cells is limited due to inadequate proliferation of mature hepatocytes, ethical and tumorigenic issues of ES cells and the requirement for immuno suppression<sup>[6]</sup>. Recently, hematopoietic CD34<sup>+</sup> cells mobilized from the bone marrow were demonstrated to have the potential to form hepatocyte-like cells and infusion of  $1 \times 10^6$  -  $2 \times 10^8$  CD34<sup>+</sup> cells into the portal vein showed clinical improvement in patients with cirrhosis<sup>[7]</sup>. Although recent studies suggest greater potential of mesenchymal stem cells (MSCs)<sup>[8]</sup>, there are very few reports of therapeutic use of MSCs for the treatment of chronic liver diseases including cirrhosis.

MSCs are non-hematopoietic and express CD90, CD73, and CD105 as their surface antigens<sup>[9]</sup>. Several studies have shown that MSCs possess the intrinsic ability to localize to injured tissues and actively participate in tissue repair. Transforming growth factor  $\beta$  family members and Wnt signaling were found to play important roles in MSCs-mediated tissue repair<sup>[10,11]</sup>. Although recruitment of various populations of hematopoietic progenitor cells has been reported in cirrhosis<sup>[12]</sup>, there are very few reports indicating the role of circulating MSCs in the regeneration of hepatic tissue in cirrhosis. Recent data indicate the broader potential of MSCs for differentiation into mesoderm, neuroectoderm and endoderm characteristics under *in vitro* conditions<sup>[13]</sup>. The aim of the present study is to identify circulating CD90<sup>+</sup> CD73<sup>+</sup> CD45<sup>-</sup> cells (mesenchymal stem cell-like cells) in patients with cirrhosis and to evaluate their *in vitro* proliferating abilities.

## MATERIALS AND METHODS

### Patients

Eighty three subjects from the Asian Institute of Gastroenterology, Hyderabad were recruited to the study. Participants, diagnosed for cirrhosis ( $n = 43$ , Male: 31) by standard clinical and imaging criteria, formed the study group. Healthy volunteers ( $n = 40$ , Male: 30) with no known pre-existing liver disease formed the control group. The study protocol was approved by the institutional review board, and all the subjects gave informed consent. Peripheral blood samples (10 mL in EDTA) were collected from all individuals for isolation of mononuclear cells (MNCs).

Isolated MNCs were cultured and their proliferating abilities and colony forming potentials were evaluated in both groups.

### Isolation, culture and enumeration of CD90<sup>+</sup> CD73<sup>+</sup> CD45<sup>-</sup> cells

MNCs were isolated from the EDTA blood using Ficoll-Hypaque density gradient centrifugation<sup>[14]</sup>. The isolated MNCs, from both control and cirrhosis peripheral blood samples, were plated at a density of  $3 \times 10^5$  cells in a culture medium containing DMEM (Sigma, St Louis, USA) supplemented with 10% FBS in 15 mmol/L HEPES (Sigma, St Louis, USA) at 37°C in a humidified environment containing 5% carbon dioxide. After 48 h, basic fibroblast growth factor (Sigma, St Louis, USA) was added to the culture plates. Adherent cells were allowed to grow up to 14 d with alternate day medium change and subsequently stained with PE labeled anti CD73, APC labeled anti CD90 and FITC labeled anti CD45 (1:100, BD Biosciences Pharmingen, San Diego, CA, USA) for 1 h at room temperature and enumerated by flow cytometry (FACS Aria II BD Biosciences, San Diego, CA, USA). An isotype control was included in each experiment. A total of 10000 events were acquired to determine the positivity of different cell surface markers used. BD FACS diva software 6.0 version was used for FACS data analysis.

### Immunocytochemistry

Immunocytochemistry (ICC) was performed on cultured adherent cells. After day 14, cultured cells were trypsinized and allowed to adhere for 48 h to coverslips coated with 0.1% gelatin. These adherent cells were fixed with 4% paraformaldehyde and washed thrice with phosphate buffered saline (PBS) containing 0.75 mmol/L CaCl<sub>2</sub> and 0.5 mmol/L MgCl<sub>2</sub>. Non-specific reactions were blocked with 1% bovine serum albumin for 30 min at room temperature. Adherent cells were stained with primary antibody (anti CD90, BD Biosciences Pharmingen, San Diego, CA) by overnight incubation at 4°C. After repeated washings with PBS, the cells were exposed to secondary antibody tagged with a fluorescent dye (goat anti-mouse Alexa 546 (Invitrogen, Carlsbad, CA, USA). Nuclei were counter-stained with DAPI. The fluorescent signal was detected under IX71 Olympus fluorescence microscope (Olympus, Tokyo, Japan) and the images were captured using CARV II (BD BioSciences, San Jose, CA, USA).

### Colony formation assay

Culture-derived adherent cells from cirrhosis, and controls were harvested using trypsin, diluted in complete medium and plated at 100 cells per T 25 flask. Cells were incubated for 14 d in DMEM supplemented with 10% FBS. After 14 d, the colonies were stained with 0.5% crystal violet in methanol for 5 min. The plates were washed and visible colonies were counted and colony forming efficiency (CFE) was calculated. The colonies that were less than 2 mm in diameter or faintly stained were excluded<sup>[15]</sup>. CFE was defined as the number of

colonies divided by the number of cells seeded and expressed as percentage. The colonies formed were also stained with anti CD90 antibodies to check specificity.

### Grading of liver function by Child-Pugh score

Liver function at admission was assessed using the Child-Pugh (CP) score. The CP score was determined using the classical parameters: ascites, encephalopathy, serum albumin, total bilirubin and prothrombin time<sup>[16]</sup>.

### Statistical analysis

The results were subjected to analysis of variance using SPSS version 13.0 (SPSS, Chicago, Ill) and expressed as mean  $\pm$  SD. The Student t-test was used to determine the likelihood of a significant difference ( $P < 0.05$ ) between the two groups.

## RESULTS

### Patient characteristics

The clinical and demographic characteristics of the subjects studied are shown in Table 1. Control group ( $n = 40$ ; Male = 30, Female = 10; Age =  $52.42 \pm 8.7$  years) were subjects with no known liver disease and the study group (cirrhosis patients) ( $n = 43$ ; Male 31, Female = 12; Age =  $60.4 \pm 12.8$  years) were individuals attending a hepatology clinic with clinical features suggestive of cirrhosis confirmed by abnormal liver function tests and ultrasonography. All the patients had esophageal varices suggesting portal hypertension. Cirrhosis in these patients was due to alcohol consumption, or cryptogenic. Significantly elevated levels ( $P < 0.01$ ) of AST, ALT (2-3 times of upper normal limit) was observed in the cirrhosis patients as compared to control group. Cirrhosis patients also exhibited low albumin, raised globulins and INR. Imaging investigations revealed increased echogenicity, nodular liver, splenomegaly, and dilated portal vein  $\geq 14$  mm. Cirrhosis patients were categorized based on their CP score (Table 1). Control subjects showed no abnormality in either imaging or in laboratory findings.

### CD90<sup>+</sup> CD73<sup>+</sup> CD45<sup>-</sup> Cells were identified in peripheral blood cultures

The number of CD90<sup>+</sup> CD73<sup>+</sup> CD45<sup>-</sup> cells obtained from cirrhosis patients increased in the cultures (7.09%) compared to control cultures (0.48%) as detected by flow cytometry. Cultures from the control group showed a negligible number of cells expressing CD90<sup>+</sup> CD73<sup>+</sup> CD45<sup>-</sup> surface antigen while the expression of these antigens more than 5 times in the cultures of cirrhosis patients and was significant ( $P < 0.001$ ) as shown in Table 1 and Figure 1.

### Cultures from cirrhosis patients exhibited fibroblast-like cells

Adherent Cells were expanded in culture medium for 14 d in both cirrhosis, and control subjects. After 3-4 d, fibroblast-like cells (spindle shape with nucleus under

**Table 1 Epidemiologic and clinical features of study subjects**

Parameter	Control ( $n = 40$ )	Cirrhosis ( $n = 43$ )
Epidemiologic		
Age (yr)	51 (42-61)	60 (42-67)
Sex (M:F)	30:10	31:12
Blood parameters		
AST (U/L)	21 $\pm$ 12	74.41 $\pm$ 9
ALT (U/L)	18 $\pm$ 10	45.5 $\pm$ 3 <sup>b</sup>
ALP (U/L)	92 $\pm$ 26	111.11 $\pm$ 33.33
AFP ( $\mu$ g/L)	8.6 $\pm$ 2.2	123 $\pm$ 3.42 <sup>b</sup>
Bilirubin (mg/dL)	0.8 $\pm$ 0.2	3.54 $\pm$ 0.06
Histopathology examination	Biopsy not done	Fibrosis and regenerating nodules
Clinical parameters		
Ascites	Absent	76%
Child-Pugh score	-	A - 25% (5-6) B - 75% (7-9)
Percentage of CD90 <sup>+</sup> CD73 <sup>+</sup> CD45 <sup>-</sup> cells in culture	0.48 $\pm$ 0.22	7.09 $\pm$ 0.73 <sup>d</sup>

<sup>b</sup> $P < 0.01$ ; <sup>d</sup> $P < 0.001$ . AST: Aspartate aminotransferase; ALT: Alanine transaminase; ALP: Alkaline phosphatase; AFP:  $\alpha$ -fetoprotein.

phase contrast microscopy) appeared and increased in number in the cultures of cirrhosis patients (Figure 2), in contrast to control group cultures where the number of cells did not increase after 1 wk.

### ICC confirms CD90 expression in cultures from cirrhosis patients

In addition to flow cytometry, ICC was performed to confirm the CD90 surface expression on cells cultured from cirrhosis patients. Cells stained strongly positive for CD90 in cirrhosis-derived cultured cells (Figure 3). CD90 expression was not observed in control cultures.

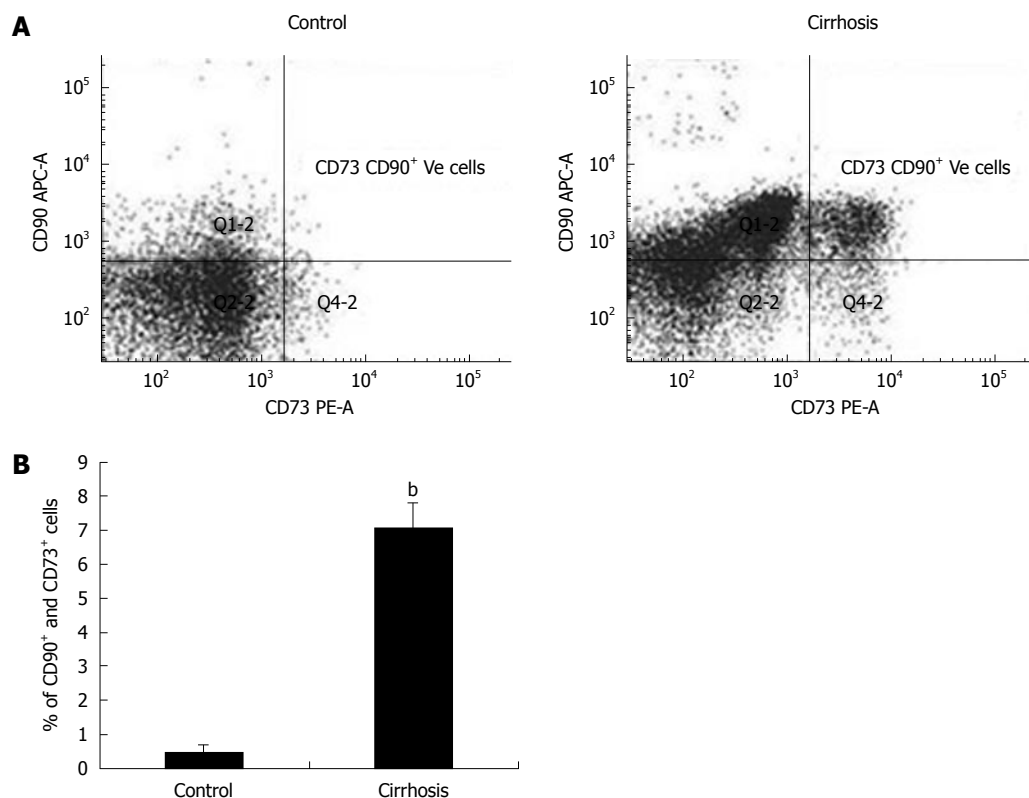
### CD90<sup>+</sup> CD73<sup>+</sup> cell cultures from cirrhosis patients exhibited CFE

There was a significant increase in CFE of cells obtained from cirrhosis patients (12 times) as compared to control cell cultures (Figure 4). The cultures from the control group did not show CFE and no colonies were observed. The increase in the number of CD90<sup>+</sup> CD73<sup>+</sup> cells in culture and their CFE indicate that the proliferation rate was higher in cirrhosis patients compared to controls.

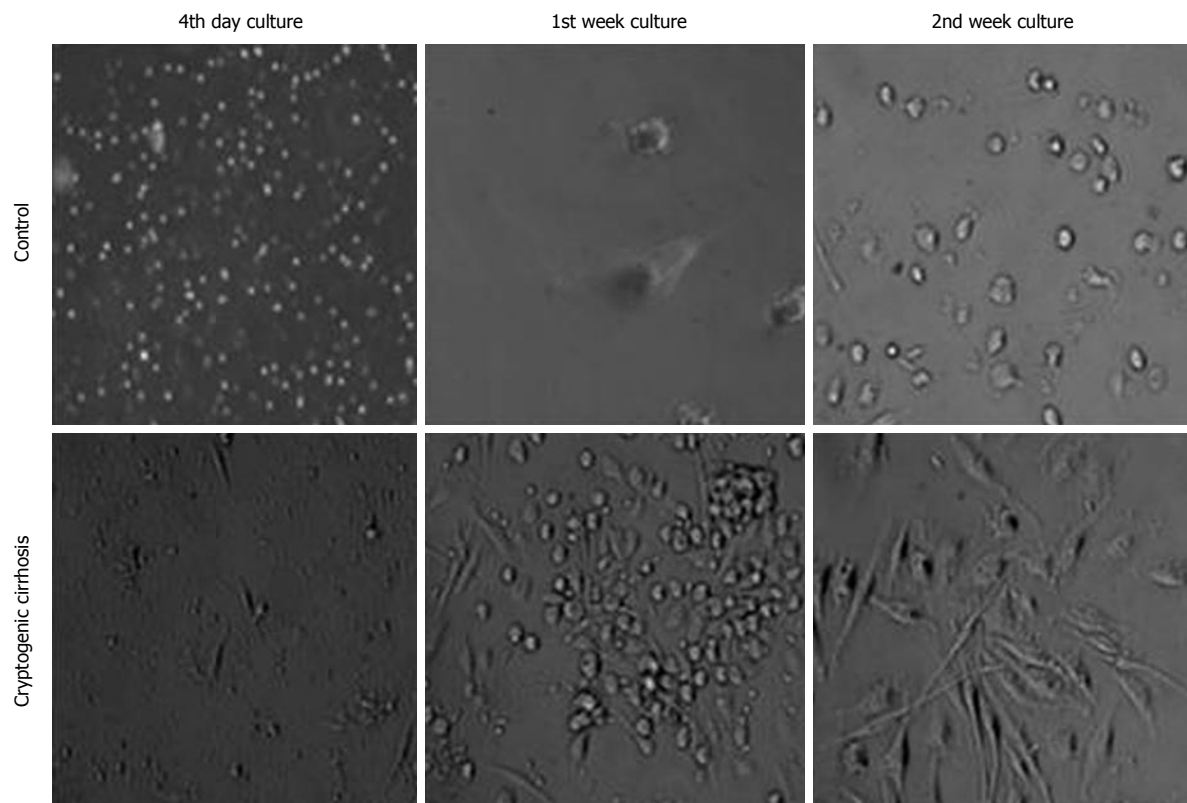
## DISCUSSION

The objective of the present study was to identify the presence of circulating CD90<sup>+</sup> CD73<sup>+</sup> CD45<sup>-</sup> cells in cirrhosis patients and to evaluate their proliferating abilities. The results obtained demonstrate that (1) the number of CD90<sup>+</sup> CD73<sup>+</sup> CD45<sup>-</sup> cells increased in cultures of cirrhosis patients as compared to controls; and (2) their proliferation rate and CFE were enhanced suggesting that these cells may form a source for therapeutic applications.

The presence of CD90<sup>+</sup> CD73<sup>+</sup> CD45<sup>-</sup> cells in peripheral blood cultures from cirrhosis patients without pre-

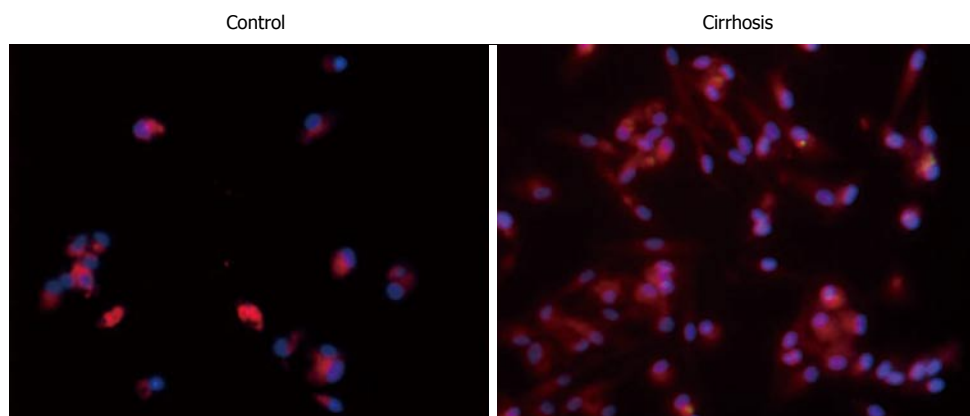


**Figure 1** Flow cytometry of CD90<sup>+</sup> CD73<sup>+</sup> CD45<sup>-</sup> cells in peripheral blood cultures. CD90<sup>+</sup>, CD73<sup>+</sup> CD45<sup>-</sup> cells in peripheral blood of control and cirrhosis cultures detected by flow cytometry. After 14 d cultured cells were stained with anti CD90, anti CD73 antibodies and analyzed on FACS Aria II. A: depicts increased number of CD90<sup>+</sup>, CD73<sup>+</sup> cells in cultures of cirrhosis patients (7.09%) ( $P < 0.001$ ) compared with controls (0.48%); B: Quantitative representation of the cells in cultures.<sup>b</sup> $P < 0.001$ .

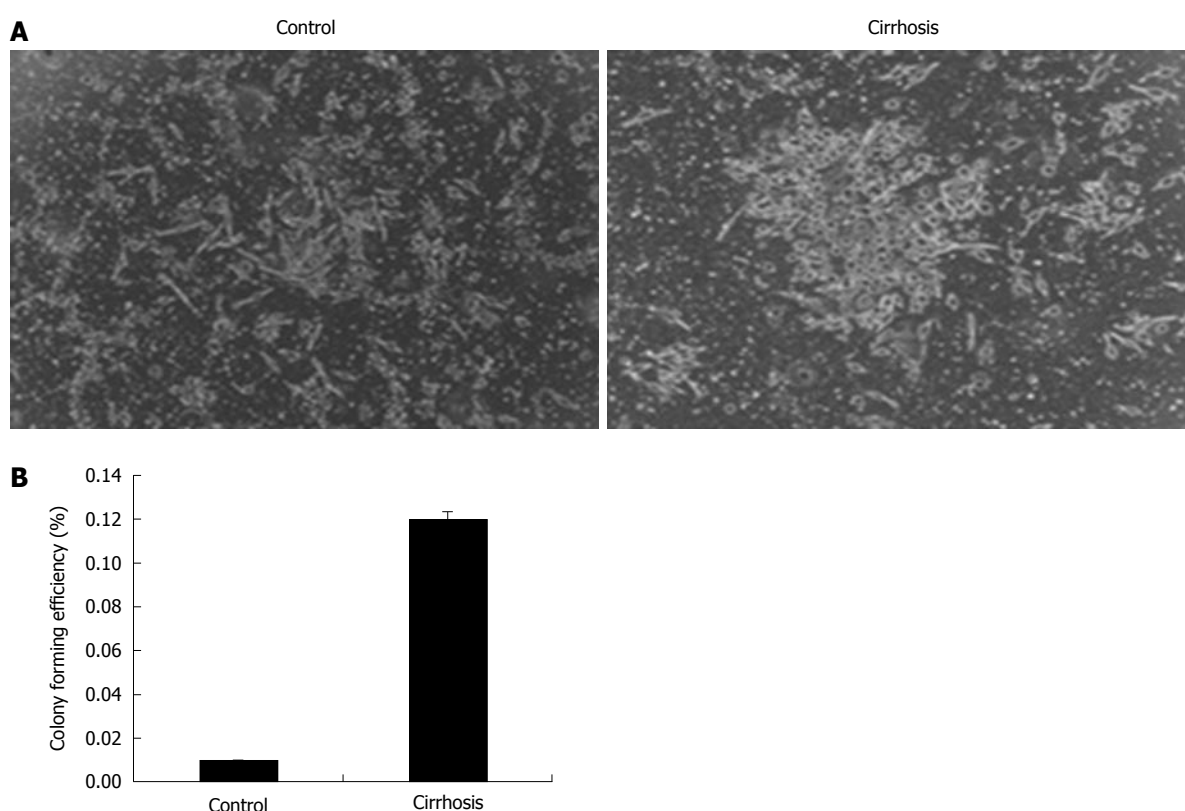


**Figure 2** Morphological features of cells in cultures. Morphological features of cells in culture from cirrhosis patients. At day 4 spindle shaped cells were observed in cirrhosis but not in control.





**Figure 3 Immunocytochemistry of cells in cultures.** The cells from control and cirrhosis cultures were immuno-stained with anti CD90 (APC) antibody, immunofluorescent images were captured at 400 × magnification. The cells showed the presence of CD90 (stained in red) and nuclei stained blue.



**Figure 4 Colony forming efficiency of cultured cells.** A: Cells from control and cirrhosis patients were stained with crystal violet to locate colonies. Colony forming efficiency (CFE) was observed in cirrhosis patients; B: Quantitative representation of colony forming efficiency of cultured cells. There was 12 fold increase in CFE of cirrhosis when compared to control cultures.

treatment with G-CSF suggests availability of these cells in the circulation of these patients. This observation is in accordance with an earlier finding that such cells are attracted from bone marrow to the site of injury for the purpose of regeneration<sup>[17,18]</sup>. It is reported that MSCs induce peripheral tolerance and migrate to injured tissues, where they can inhibit the release of pro-inflammatory cytokines and promote the survival of damaged cells<sup>[19]</sup>. Although circulating mesenchymal cells are reported to migrate to the site of injury, their homing properties and capacity to normalize the diseased tissue function need

to be studied. The proliferating ability of CD90<sup>+</sup> CD73<sup>+</sup> CD45<sup>-</sup> cells obtained from cirrhosis patients was evident by the appearance of fibroblast-like cells by day 4 in culture (Figure 2) and not in controls. The significant ( $P < 0.001$ ) increase in the number of CD90<sup>+</sup> CD73<sup>+</sup> CD45<sup>-</sup> cells in cultures from cirrhosis patients and their CFE indicate increased proliferation of CD90<sup>+</sup> CD73<sup>+</sup> CD45<sup>-</sup> in cirrhosis. The gold standard assay that is used to identify MSCs is the colony forming unit-fibroblast assay which, at a minimum, identifies adherent, spindle-shaped cells that proliferate to form colonies<sup>[20]</sup>.

Cellular therapies, including stem cells, require that the source of cells is easily accessible, has the ability to expand under culture conditions and can demonstrate their transplantation ability. In this report, we are able to show that CD90<sup>+</sup> CD73<sup>+</sup> CD45<sup>+</sup> cells are present in the peripheral blood of cirrhosis patients, which is very easily accessible and that they are able to proliferate and form colonies under culture conditions. As per current knowledge, among the cell types involved in liver regeneration, mature hepatocytes and intra ductal progenitors find limited use in cellular therapy because of their lesser proliferating abilities<sup>[21]</sup>. In response to sustained hepatocytic necrosis upon severe injury, stem cells from bone marrow, possessing greater proliferating and differentiating capabilities, enter the liver through portal and periportal distribution as an intermediate cell population and mature into hepatocytes<sup>[22]</sup>.

Bone marrow is a rich source of circulating stem cells for both hematopoietic and mesenchymal cells. Earlier studies demonstrated the use of CD34<sup>+</sup> cells in cell-based therapy for cirrhosis and showed that infusion of  $1 \times 10^6$  -  $2 \times 10^8$  cultured cells improve liver function in patients with cirrhosis. All these studies have increased circulating CD34<sup>+</sup> cells by administering G-CSF at 10-15 µg/kg body weight<sup>[7]</sup>.

Though hematopoietic stem cells form the major source of cells for tissue regeneration, recent data suggest broader potential for MSCs<sup>[8]</sup>. A recent study reported a deficient proliferation of bone marrow-derived mesenchymal cells in patients with chronic hepatitis B viral infection and cirrhosis of the liver<sup>[23]</sup>. Hence, in this study, we have isolated and cultured peripheral blood MNCs from idiopathic cirrhosis patients. The data presented in this report reveal that circulating mesenchymal-like cells are present in cirrhotic patients and that they proliferate at a higher rate. This important feature of circulating mesenchymal-like cells in cirrhosis patients may allow us to proliferate these cells under controlled conditions and differentiate them into mature hepatocytes. Another important feature of circulating mesenchymal-like cells in cirrhosis is that since their proliferation rate is high, administration of G-CSF for 4-5 d may not be required. In conclusion, our preliminary results indicate that circulating CD90<sup>+</sup> CD73<sup>+</sup> CD45<sup>+</sup> cells may serve as another easily approachable, alternative cell source that can be used for autologous cell transplantation in cirrhosis patients, and forms a basis for future applications in the wider perspective. Further, these cells need to be evaluated for safety and efficacy using animal models.

## COMMENTS

### Background

Liver transplantation is the gold standard treatment for various end-stage hepatic diseases but it is hindered by the lack of donor organs and by complications associated with rejection and immune suppression. There is increasing evidence to suggest that circulating mesenchymal and hematopoietic stem cells are a transplantable cell source for liver diseases. The aim of this study was to identify circulating CD90<sup>+</sup> CD73<sup>+</sup> CD45<sup>+</sup> cells in cirrhotic patients and evaluate their *in vitro* proliferating abilities.

### Research frontiers

Circulating CD90<sup>+</sup> CD73<sup>+</sup> CD45<sup>+</sup> cells might offer a potential source for treatment of liver cirrhosis

### Innovations and breakthroughs

The increased presence of circulating CD90<sup>+</sup> CD73<sup>+</sup> CD45<sup>+</sup> cells in peripheral blood cultures of cirrhosis patients suggests that hepatic tissue injury mobilizes bone marrow stem cells. Increased proliferation and colony forming efficiency of these cells in cultures indicate that these cells may have implications for liver cirrhosis cell therapy.

### Applications

Circulating CD90<sup>+</sup> CD73<sup>+</sup> CD45<sup>+</sup> cells could be useful for autologous transplantation in cirrhosis patients

### Peer review

Circulating CD90<sup>+</sup> CD73<sup>+</sup> CD45<sup>+</sup> cells could be isolated from cirrhosis patients without giving granulocyte colony forming factor treatment. This article tries to identify and evaluate proliferation and colony forming abilities of circulating CD90<sup>+</sup> CD73<sup>+</sup> CD45<sup>+</sup> cells in cirrhosis patients. The results revealed that circulating CD90<sup>+</sup> CD73<sup>+</sup> CD45<sup>+</sup> cells could be used for autologous transplantation in cirrhosis patients.

## REFERENCES

- 1 Anthony PP, Ishak KG, Nayak NC, Poulsen HE, Scheuer PJ, Sobin LH. The morphology of cirrhosis: definition, nomenclature, and classification. *Bull World Health Organ* 1977; **55**: 521-540
- 2 Llovet JM, Burroughs A, Bruix J. Hepatocellular carcinoma. *Lancet* 2003; **362**: 1907-1917
- 3 McMahon BJ. Epidemiology and natural history of hepatitis B. *Semin Liver Dis* 2005; **25** Suppl 1: 3-8
- 4 Lorenzini S, Andreone P. Stem cell therapy for human liver cirrhosis: a cautious analysis of the results. *Stem Cells* 2007; **25**: 2383-2384
- 5 Caldwell SH, Oelsner DH, Iezzoni JC, Hespenheide EE, Battle EH, Driscoll CJ. Cryptogenic cirrhosis: clinical characterization and risk factors for underlying disease. *Hepatology* 1999; **29**: 664-669
- 6 Levicar N, Dimarakis I, Flores C, Tracey J, Gordon MY, Habib NA. Stem cells as a treatment for chronic liver disease and diabetes. *Handb Exp Pharmacol* 2007; 243-262
- 7 Gordon MY, Levicar N, Pai M, Bachellier P, Dimarakis I, Al-Allaf F, M'Hamdi H, Thalji T, Welsh JP, Marley SB, Davies J, Dazzi F, Marelli-Berg F, Tait P, Playford R, Jiao L, Jensen S, Nicholls JP, Ayav A, Nohandani M, Farzaneh F, Gaken J, Dodge R, Alison M, Apperley JF, Lechler R, Habib NA. Characterization and clinical application of human CD34<sup>+</sup> stem/progenitor cell populations mobilized into the blood by granulocyte colony-stimulating factor. *Stem Cells* 2006; **24**: 1822-1830
- 8 Jackson L, Jones DR, Scotting P, Sottile V. Adult mesenchymal stem cells: differentiation potential and therapeutic applications. *J Postgrad Med* 2007; **53**: 121-127
- 9 Chamberlain G, Fox J, Ashton B, Middleton J. Concise review: mesenchymal stem cells: their phenotype, differentiation capacity, immunological features, and potential for homing. *Stem Cells* 2007; **25**: 2739-2749
- 10 Stagg J. Mesenchymal stem cells in cancer. *Stem Cell Rev* 2008; **4**: 119-124
- 11 Barry F, Boynton R, Murphy M, Haynesworth S, Zaia J. The SH-3 and SH-4 antibodies recognize distinct epitopes on CD73 from human mesenchymal stem cells. *Biochem Biophys Res Commun* 2001; **289**: 519-524
- 12 Gehling UM, Willems M, Schlagner K, Benndorf RA, Dandri M, Petersen J, Sterneck M, Pollok JM, Hossfeld DK, Rogiers X. Mobilization of hematopoietic progenitor cells in patients with liver cirrhosis. *World J Gastroenterol* 2010; **16**: 217-224
- 13 Jiang Y, Jahagirdar BN, Reinhardt RL, Schwartz RE, Keene CD, Ortiz-Gonzalez XR, Reyes M, Lenvik T, Lund T, Blackstad M, Du J, Aldrich S, Lisberg A, Low WC, Largaespada

- DA, Verfaillie CM. Pluripotency of mesenchymal stem cells derived from adult marrow. *Nature* 2002; **418**: 41-49
- 14 **Zvaifler NJ**, Marinova-Mutafchieva L, Adams G, Edwards CJ, Moss J, Burger JA, Maini RN. Mesenchymal precursor cells in the blood of normal individuals. *Arthritis Res* 2000; **2**: 477-488
  - 15 **Polisetty N**, Fatima A, Madhira SL, Sangwan VS, Vemuganti GK. Mesenchymal cells from limbal stroma of human eye. *Mol Vis* 2008; **14**: 431-442
  - 16 **Durand F**, Valla D. Assessment of the prognosis of cirrhosis: Child-Pugh versus MELD. *J Hepatol* 2005; **42** Suppl: S100-S107
  - 17 **Chapel A**, Bertho JM, Bensidhoum M, Fouillard L, Young RG, Frick J, Demarquay C, Cuvelier F, Mathieu E, Trompier F, Dudoignon N, Germain C, Mazurier C, Aigueperse J, Borneman J, Gorin NC, Gourmelon P, Thierry D. Mesenchymal stem cells home to injured tissues when co-infused with hematopoietic cells to treat a radiation-induced multi-organ failure syndrome. *J Gene Med* 2003; **5**: 1028-1038
  - 18 **Ortiz LA**, Gambelli F, McBride C, Gaupp D, Baddoo M, Kaminiski N, Phinney DG. Mesenchymal stem cell engraftment in lung is enhanced in response to bleomycin exposure and ameliorates its fibrotic effects. *Proc Natl Acad Sci USA* 2003; **100**: 8407-8411
  - 19 **Uccelli A**, Moretta L, Pistoia V. Mesenchymal stem cells in health and disease. *Nat Rev Immunol* 2008; **8**: 726-736
  - 20 **Friedenstein AJ**, Chailakhjan RK, Lalykina KS. The development of fibroblast colonies in monolayer cultures of guinea-pig bone marrow and spleen cells. *Cell Tissue Kinet* 1970; **3**: 393-403
  - 21 **Sell S**. Heterogeneity and plasticity of hepatocyte lineage cells. *Hepatology* 2001; **33**: 738-750
  - 22 **Petersen BE**, Bowen WC, Patrene KD, Mars WM, Sullivan AK, Murase N, Boggs SS, Greenberger JS, Goff JP. Bone marrow as a potential source of hepatic oval cells. *Science* 1999; **284**: 1168-1170
  - 23 **Zhong YS**, Lin N, Deng MH, Zhang FC, Tang ZF, Xu RY. Deficient proliferation of bone marrow-derived mesenchymal stem cells in patients with chronic hepatitis B viral infections and cirrhosis of the liver. *Dig Dis Sci* 2010; **55**: 438-445

**S- Editor** Wang JL **L- Editor** Hughes D **E- Editor** Zheng XM