

# World Journal of *Psychiatry*

*World J Psychiatr* 2017 June 22; 7(2): 77-132



**REVIEW**

- 77 Understanding the pathophysiology of postpartum psychosis: Challenges and new approaches  
*Davies W*

**ORIGINAL ARTICLE****Basic Study**

- 89 Development of an instrument to measure patients' attitudes towards involuntary hospitalization  
*Gabriel A*

**Randomized Controlled Trial**

- 98 Group psychological intervention for maternal depression: A nested qualitative study from Karachi, Pakistan  
*Husain N, Chaudhry N, Furber C, Fayyaz H, Kiran T, Lunat F, Rahman RU, Farhan S, Fatima B*

**Observational Study**

- 106 Childhood trauma and factors associated with depression among inpatients with cardiovascular disease  
*Barreto FJN, Garcia FD, Prado PHT, Rocha PMB, Las Casas NS, Vallt FB, Correa H, Neves MCL*
- 114 Relation of binge eating disorder with impulsiveness in obese individuals  
*Ural C, Belli H, Akbudak M, Solmaz A, Bektas ZD, Celebi F*
- 121 Three-dimensional stereotactic surface projection in the statistical analysis of single photon emission computed tomography data for distinguishing between Alzheimer's disease and depression  
*Kirino E*

**CASE REPORT**

- 128 Cognitive correlates of neuroimaging abnormalities in the onset of schizophrenia: A case report  
*Grassi S, Orsenigo G, Serati M, Caletti E, Altamura AC, Buoli M*

**ABOUT COVER**

Editorial Board Member of *World Journal of Psychiatry*, Miquel Bernardo, MD, PhD, Professor, Barcelona Clinic Schizophrenia Unit, Institut Clinic de Neurociencies, Hospital Clinic de Barcelona, 08036 Barcelona, Spain

**AIM AND SCOPE**

*World Journal of Psychiatry* (*World J Psychiatr*, *WJP*, online ISSN 2220-3206, DOI: 10.5498) is a peer-reviewed open access academic journal that aims to guide clinical practice and improve diagnostic and therapeutic skills of clinicians.

*WJP* covers topics concerning behavior and behavior mechanisms, psychological phenomena and processes, mental disorders, behavioral disciplines and activities, adjustment disorders, anxiety disorders, delirium, dementia, amnesic disorders, cognitive disorders, dissociative disorders, eating disorders, factitious disorders, impulse control disorders, mental disorders diagnosed in childhood, mood disorders, neurotic disorders, personality disorders, schizophrenia and disorders with psychotic features, sexual and gender disorders, sleep disorders, somatoform disorders, and substance-related disorders. Priority publication will be given to articles concerning diagnosis and treatment of psychiatric diseases. The following aspects are covered: Clinical diagnosis, laboratory diagnosis, differential diagnosis, imaging tests, pathological diagnosis, molecular biological diagnosis, immunological diagnosis, genetic diagnosis, functional diagnostics, and physical diagnosis; and comprehensive therapy, drug therapy, surgical therapy, interventional treatment, minimally invasive therapy, and robot-assisted therapy.

We encourage authors to submit their manuscripts to *WJP*. We will give priority to manuscripts that are supported by major national and international foundations and those that are of great basic and clinical significance.

**INDEXING/ABSTRACTING**

*World Journal of Psychiatry* is now indexed in PubMed, PubMed Central.

**FLYLEAF**

**I-IV** Editorial Board

**EDITORS FOR THIS ISSUE**

**Responsible Assistant Editor:** *Xiang Li*  
**Responsible Electronic Editor:** *Dan Li*  
**Proofing Editor-in-Chief:** *Lian-Sheng Ma*

**Responsible Science Editor:** *Jin-Xin Kong*  
**Proofing Editorial Office Director:** *Jin-Lei Wang*

**NAME OF JOURNAL**  
*World Journal of Psychiatry*

**ISSN**  
ISSN 2220-3206 (online)

**LAUNCH DATE**  
December 31, 2011

**FREQUENCY**  
Quarterly

**EDITOR-IN-CHIEF**  
**Anantha Shekhar, MD, PhD, Professor, Director,**  
Indiana Clinical and Translational Sciences Institute,  
Indiana University School of Medicine, 410 West 10th  
Street, Suite 1100, Indianapolis, IN 46202, United States

**EDITORIAL BOARD MEMBERS**  
All editorial board members resources online at <http://www.wjgnet.com/2220-3206/editorialboard.htm>

**EDITORIAL OFFICE**  
Xiu-Xia Song, Director  
*World Journal of Psychiatry*  
Baishideng Publishing Group Inc  
7901 Stoneridge Drive, Suite 501,  
Pleasanton, CA 94588, USA  
Telephone: +1-925-2238242  
Fax: +1-925-2238243  
E-mail: [editorialoffice@wjgnet.com](mailto:editorialoffice@wjgnet.com)  
Help Desk: <http://www.f6publishing.com/helpdesk>  
<http://www.wjgnet.com>

**PUBLISHER**  
Baishideng Publishing Group Inc  
7901 Stoneridge Drive, Suite 501,  
Pleasanton, CA 94588, USA  
Telephone: +1-925-2238242  
Fax: +1-925-2238243  
E-mail: [bpgoffice@wjgnet.com](mailto:bpgoffice@wjgnet.com)  
Help Desk: <http://www.f6publishing.com/helpdesk>  
<http://www.wjgnet.com>

**PUBLICATION DATE**  
June 22, 2017

**COPYRIGHT**

© 2017 Baishideng Publishing Group Inc. Articles published by this Open-Access journal are distributed under the terms of the Creative Commons Attribution Non-commercial License, which permits use, distribution, and reproduction in any medium, provided the original work is properly cited, the use is non commercial and is otherwise in compliance with the license.

**SPECIAL STATEMENT**

All articles published in journals owned by the Baishideng Publishing Group (BPG) represent the views and opinions of their authors, and not the views, opinions or policies of the BPG, except where otherwise explicitly indicated.

**INSTRUCTIONS TO AUTHORS**

<http://www.wjgnet.com/bpg/gerinfo/204>

**ONLINE SUBMISSION**

<http://www.f6publishing.com>

## Observational Study

# Childhood trauma and factors associated with depression among inpatients with cardiovascular disease

Felipe José Nascimento Barreto, Frederico Duarte Garcia, Paulo Henrique Teixeira Prado, Paulo Marcos Brasil Rocha, Nádia Souza Las Casas, Felipe Barbosa Vallt, Humberto Correa, Maila Castro Lourenço Neves

Felipe José Nascimento Barreto, Frederico Duarte Garcia, Nádia Souza Las Casas, Felipe Barbosa Vallt, Maila Castro Lourenço Neves, Department of Mental Health, Federal University of Minas Gerais, Avenida Alfredo Balena, CEP 30130-100 Belo Horizonte, Brazil

Felipe José Nascimento Barreto, Postgraduation Program in Molecular Medicine, School of Medicine, Federal University of Minas Gerais, Avenida Alfredo Balena, CEP 30130-100 Belo Horizonte, Brazil

Frederico Duarte Garcia, Humberto Correa, Molecular Medicine National Institute of Science and Technology, Avenida Alfredo Balena, Federal University of Minas Gerais, CEP 30130-100 Belo Horizonte, Brazil

Paulo Henrique Teixeira Prado, Paulo Marcos Brasil Rocha, Hospital das Clínicas, Federal University of Minas Gerais, Avenida Alfredo Balena, CEP 30130-100 Belo Horizonte, Brazil

**Author contributions:** Barreto FJN, Garcia FD, Prado PHT, Rocha PMB, Correa H and Neves MCL contributed to the conception of the study and design; Barreto FJN, Las Casas NS and Vallt FB contributed to data acquisition and interpretation, and writing of the paper; Garcia FD and Neves MCL contribute to editing, reviewing and final approval of the paper.

**Supported by** the program of Young Researchers of the Federal University of Minas Gerais, No. 01/2013; and FAPEMIG (Fundação de Amparo a Pesquisa do Estado de Minas Gerais, Brazil), No. APQ-01714-13. The funder did not interfere with any procedure regarding the production of this paper.

**Institutional review board statement:** The Committee of Ethics in Research of UFMG approved the protocol, registered with the number CAAE 13605213.3.0000.5149.

**Informed consent statement:** All study participants, or their legal guardian, provided informed written consent prior to study enrolment.

**Conflict-of-interest statement:** Garcia FD received CME

grants, received paid speakership, and participated in research from Janssen and Pfizer; Correa H received paid speakership, and participated in research from Janssen; Prado PHT and Neves MCL participated in research from Janssen. The other authors have no conflicts to declare.

**Data sharing statement:** We would like to inform that, related to the research described on our manuscript, no additional data is available.

**Open-Access:** This article is an open-access article which was selected by an in-house editor and fully peer-reviewed by external reviewers. It is distributed in accordance with the Creative Commons Attribution Non Commercial (CC BY-NC 4.0) license, which permits others to distribute, remix, adapt, build upon this work non-commercially, and license their derivative works on different terms, provided the original work is properly cited and the use is non-commercial. See: <http://creativecommons.org/licenses/by-nc/4.0/>

**Manuscript source:** Invited manuscript

**Correspondence to:** Dr. Maila Castro Lourenço Neves, Department of Mental Health, Federal University of Minas Gerais, Avenida Alfredo Balena, 190 - Sala 240, CEP 30130-100 Belo Horizonte, Brazil. [mailacln@ufmg.br](mailto:mailacln@ufmg.br)  
Telephone: +55-31-34099786

**Received:** January 21, 2017

**Peer-review started:** January 21, 2017

**First decision:** February 15, 2017

**Revised:** March 30, 2017

**Accepted:** April 23, 2017

**Article in press:** April 24, 2017

**Published online:** June 22, 2017

## Abstract

### AIM

To identify factors associated with depressive symptoms



among inpatients with cardiovascular disease (CVD).

## METHODS

This is a cross-sectional study performed in a subsample of a large cross-sectional research that investigated affective disorders and suicide behaviour among inpatients hospitalized in non-surgical wards of the University Hospital of the Federal University of Minas Gerais from November 2013 to October 2015. Sociodemographic and clinical data were obtained through a structured interview and medical record review. Depression was assessed by the depression subscale of the Hospital Anxiety and Depression Scale, with scores  $\geq 8$  considered as positive screening for depression. We used the Fageström Test for Nicotine Dependence to characterize nicotine dependence. For assessing resilience and early-life trauma, we used the raw scores of the Wagnild and Young Resilience Scale and Childhood Trauma Questionnaire, respectively.

## RESULTS

At endpoint, we included 137 subjects. Thirty-eight (27.7%) subjects presented depressive symptoms and nine (23.7%) of those were receiving antidepressant treatment during hospitalization. The female sex; a lower mean educational level; a greater prevalence of previous suicide attempts; a higher level of pain; a higher prevalence of family antecedents of mental disorders; a lower resilience score; and higher childhood trauma score were the factors significantly associated with screening positive for major depression ( $P < 0.05$ ). Multivariate analysis demonstrated that the factors independently associated with the depressive symptoms were a higher childhood trauma severity (OR = 1.06;  $P = 0.004$ ); moderate to severe nicotine dependence (OR = 8.58;  $P = 0.008$ ); and the number of previous hospital admissions (OR = 1.11;  $P = 0.034$ ). The obtained logistic model was considered valid, indicating that the three factors together distinguished between having or not depressive symptoms, and correctly classified 74.6% of individuals in the sample.

## CONCLUSION

Our results demonstrate that inpatients presenting both CVD and a positive screening for depression are more prone to have antecedents of childhood trauma, nicotine dependence and a higher number of previous hospitalizations.

**Key words:** Inpatients; Depression; Cardiovascular disease; Depressive symptoms; General hospital

© The Author(s) 2017. Published by Baishideng Publishing Group Inc. All rights reserved.

**Core tip:** The prevalence of depression is considerably higher among individuals with cardiovascular diseases (CVD) when compared to the general population. Both major depression and depressive symptoms are predictors of poor outcome in patients with CVD. Depressive disorder is frequently overlooked and untreated in individuals with CVD. Our results demonstrate that

inpatients presenting both CVD and a positive screening for depression are more prone to have antecedents of childhood trauma, nicotine dependence and a higher number of previous hospitalizations. Clinicians may consider these factors in the assessment of CVD inpatients at risk for major depression. This measure can improve their treatment approach and patients' prognosis.

Barreto FJN, Garcia FD, Prado PHT, Rocha PMB, Las Casas NS, Vallt FB, Correa H, Neves MCL. Childhood trauma and factors associated with depression among inpatients with cardiovascular disease. *World J Psychiatr* 2017; 7(2): 106-113 Available from: URL: <http://www.wjgnet.com/2220-3206/full/v7/i2/106.htm> DOI: <http://dx.doi.org/10.5498/wjp.v7.i2.106>

## INTRODUCTION

The prevalence of major depressive disorder (MD) is four times higher among individuals with cardiovascular diseases (CVD) when compared to the general population<sup>[1-4]</sup>, and MD is a predictor for future CVD. MD increases the risk for coronary arterial disease (CAD) by 56%, independent of other traditional cardiovascular risk factors<sup>[1]</sup>. Moreover, MD and depressive symptoms are predictors of poor outcome in patients with CVD regarding morbidity and mortality<sup>[2,3]</sup>.

Maltzberg<sup>[4]</sup> first reported the bidirectional relationship between MD and CVD in 1937. This author observed an increase in mortality from CVD in patients with severe depression. More recently, some authors reported that post-myocardial infarction depression increases the risk of all-cause mortality (RR = 2.25) and of cardiac events (RR = 1.59) within 24 mo after the event<sup>[5]</sup>. Even in the absence of depressive symptoms, a positive history of depression in first-degree relatives may influence the cardiovascular risk profile in adulthood, comparing to control group<sup>[6]</sup>.

Various biological modifications, previously found in patients with depression, may explain these findings. An increased concentration of inflammatory biomarkers (C-reactive protein, interleukins 1 and 6), metabolic dysregulation, dysfunctions in the platelet clotting cascade, decreased variability in heart rate, hyperactivation of hypothalamus-pituitary-adrenal axis and reduction in circulating endothelial progenitor cells are some of the factors that may be at the pathophysiological origin of the association between depression and CVD<sup>[2,7-9]</sup>. Finally, both depression and CVD have notorious genetic determinants, which may underlie the development of one and another as shared risk factors<sup>[2,10]</sup>. Even acute and chronic life stressors may increase the risk for developing one of these diseases<sup>[2,10]</sup>. Adverse events in early life can directly affect genome through epigenetic mechanisms and contribute to the expression or exacerbation of a genetic susceptibility for depression, CVD or both in adulthood<sup>[2]</sup>.

During hospitalization, depression decreases inpatients'

treatment adherence, increases functional disability and extends hospital length of stay<sup>[11,12]</sup>. Inpatients with CVD presenting positive screening for depression at discharge have a 2.5 fold increase in relative risk of experiencing a CVD-related hospitalization, even after adjustment for traditional cardiovascular risk factors and measures of disease severity<sup>[13]</sup>.

Depression is still a frequently overlooked and untreated condition among individuals with CVD<sup>[14,15]</sup>. The same applies for those admitted to general hospitals, a population in which 28% present criteria for depressive disorders<sup>[16]</sup>. Less than one in four cases of major depression among inpatients are correctly diagnosed by assisting physicians<sup>[14]</sup>. In addition, only half the members of the American College of Cardiologists treat depression properly, according to a national survey<sup>[17]</sup>.

Inpatients with CVD have increased vulnerability for depression. Improving the knowledge on how much risk factors influence the chances of becoming depressed may improve identification of MD among this population in the general hospital setting. We hypothesized that inpatients presenting both CVD and a positive screening for major depression are more prone to be of female sex; to present personal and familiar antecedents of psychiatric disorders (*e.g.*, suicide attempts, addictions); to present worse indicators of CVD (*e.g.*, increased number of previous hospital admissions, present pain and a worse score of functionality); and present lower resilience and antecedents of childhood trauma. Our primary goal was to assess the factors mentioned above in a population of inpatients with CVD in a university hospital.

## MATERIALS AND METHODS

This cross-sectional design study encompassed a subsample of a larger study that investigated suicide behaviour among general hospital inpatients. We included all inpatients admitted to the wards of the University Hospital of the Federal University of Minas Gerais (UH-UFGM), hospitalized from November 2013 to October 2015. The UH-UFGM is a tertiary regional reference centre.

The Committee of Ethics in Research of UFGM approved the protocol, registered with the number CAAE 13605213.3.0000.5149. We obtained written informed consent from all participants, after providing a complete description of the study. All subjects screening positive for a psychiatric disorder received consultation-liaison psychiatric evaluations.

### Subjects

For the initial study, we included inpatients aged 18-year-old or older, hospitalized in a clinical ward and excluded patients hospitalized with surgical indication. In the present study, we selected all patients with a diagnosis of CVD (*e.g.*, CAD, congestive heart failure, Chagas cardiomyopathy, cardiac arrhythmia or any other cardiac disease that required hospitalization) and excluded subjects screening positive for delirium and mild to

severe cognitive impairment or dementia as well as those unable to comprehend, illiterate or with major visual or hearing impairment. We summarized the inclusion procedure in the flowchart (Figure 1).

### Instruments and procedures

After a clinical assessment and stabilization, we included all subjects at admission. Experienced psychiatrists, trained to perform the assessments foreseen in the study protocol, evaluated the subjects. All the scales used in this study had been previously translated and culturally adapted to Brazilian Portuguese.

We screened delirium using the Confusion Assessment Method<sup>[18]</sup> and cognitive impairment through the Montreal Cognitive Assessment<sup>[19]</sup> using 17 as a cut-off point<sup>[20]</sup>.

For screening MD, we used the Hospital Anxiety and Depression Scale (HADS-d). This scale has acceptable properties for use in inpatients with CVD<sup>[21]</sup>. Scores of  $\geq 8$  indicate a positive screening for depression, according to the Brazilian validation study that issued a sensibility of 84.6% and specificity of 90.3%<sup>[22]</sup>.

We used the visual analogue scale to assess pain intensity<sup>[23]</sup>. We determined the basic and instrumental activities of daily living (ADL) using the Katz Index and the Pfeffer's Functional Activities Questionnaire (PFAQ), respectively<sup>[24]</sup>. We considered scores  $\geq 5$  in the PFAQ as characteristic of dependence on instrumental ADL<sup>[25]</sup>.

We considered a score  $\geq 8$  on the Alcohol Use Disorders Identification Test to assess problematic alcohol use<sup>[26]</sup> and a score  $\geq 4$  on the Fageström Test for Nicotine Dependence to characterize moderate to severe nicotine dependence<sup>[27]</sup>.

We considered the levels of positive psychosocial adjustment given major life events, like resilience, and used the Wagnild and Young Resilience Scale (WYRS) to evaluate resilience level. The WYRS is a paper-and-pencil scale, composed of 25 likert-type items<sup>[28]</sup> and, as the validation study did not establish a cut-off point, we used the raw results in our analysis. For assessing early-life trauma we used the Childhood Trauma Questionnaire (CTQ)<sup>[29]</sup>. The CTQ is a 28-item self-report inventory that provides a valid screening for early life abuse or negligence.

### Statistical analysis

In the descriptive analysis, we calculated measures of central tendency and dispersion. The Shapiro-Wilk test assessed data normality. For univariate analysis, a  $\chi^2$  test was considered for categorical variables and Mann-Whitney test for continuous variables. To determine which factors had a greater association with positive screening for depression in our sample, we conducted a multiple logistic regression with stepwise selection. Those variables with  $P$  value  $\leq 0.2$  in univariate analysis were apt to enter the model. The  $\chi^2$  test model and Nagelkerke's  $R^2$  used to evaluate the predictive ability of the logistic model obtained. Calculation of odds ratios (OR) considered a 95%CI and significance of  $P < 0.05$ .

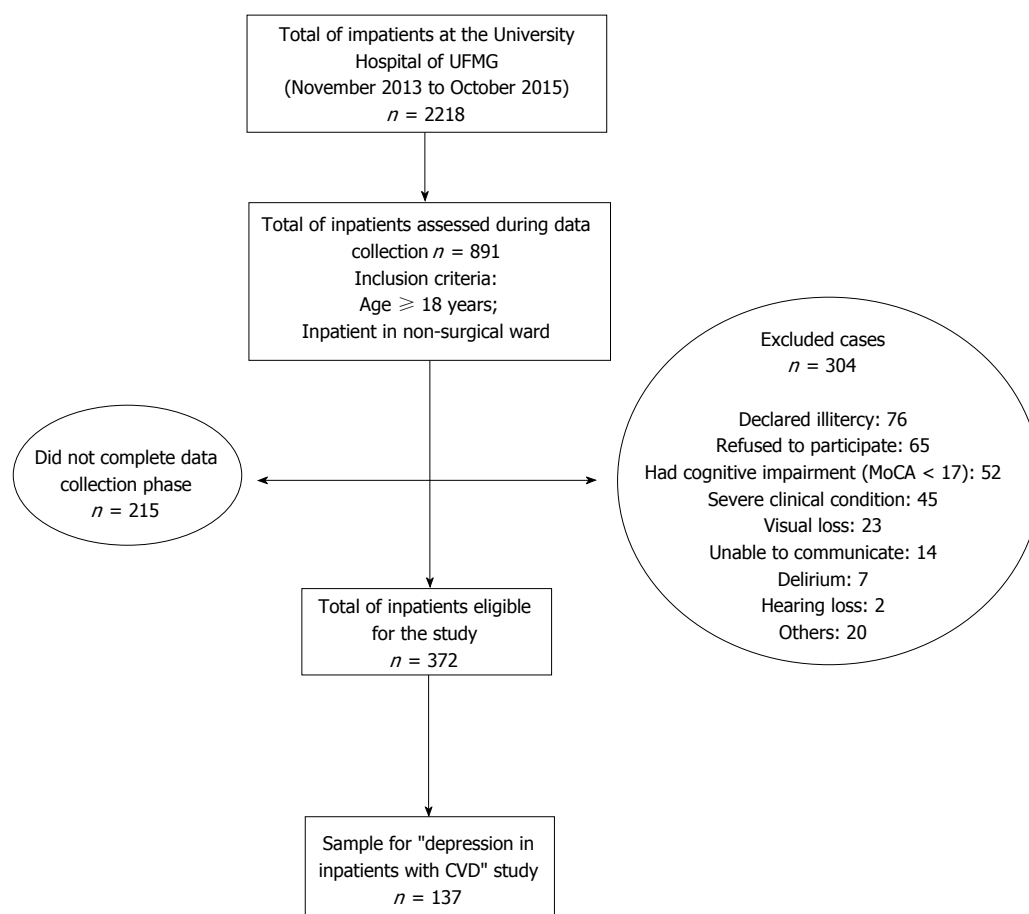


Figure 1 Flowchart of subjects included in the study. UFMG: The Federal University of Minas Gerais; CVD: Cardiovascular disease.

All analyses were performed using SPSS software version 20 (IBM Corporation© 2011).

## RESULTS

### Sample description

At endpoint, we included 137 subjects and found a higher prevalence of males [ $n = 92$  (67.2%)], a mean age of  $52.1 \pm 12.5$  years old and a mean educational level of  $8.5 \pm 4.4$  years. The most prevalent CVD diagnoses were CAD ( $n = 76$ ; 55.5%), congestive heart failure ( $n = 43$ ; 31.4%) and cardiac arrhythmia ( $n = 15$ ; 10.9%). CAD, the most frequent cardiovascular diagnosis, was not associated with positive screening for major depression. Seventy-five (54.7%) and 23 (16.8%) subjects presented hypertension and diabetes mellitus, respectively.

### Factors associated with positive screening for depression

Thirty-eight (27.7%) subjects screened positive for depression and nine (23.7%) were taking antidepressants during hospitalization. Female sex, lower mean educational level, greater number of previous suicide attempts, higher level of pain, higher prevalence of family antecedents of mental disorders, lower resilience score and higher childhood trauma score were the factors

significantly associated to screening positive for major depression (Table 1).

Three factors remained statistically associated with a positive screening for depression (Table 2) in multivariate analysis: (1) childhood trauma; (2) moderate or severe nicotine dependence; and (3) the number of hospital admissions.

Patients with moderate and severe nicotine dependence were 8.58 times more prone to screen positive for depression ( $P = 0.008$ ).

The chance to screen positive for depression increased 11% for each hospital admission ( $P = 0.034$ ) and 6% for each point of increase in the CTQ score for childhood trauma ( $P = 0.004$ ).

The logistic model indicated that the three factors together distinguished between positive screening for depression or not, and correctly classified 74.6% of individuals in the sample ( $\chi^2$ : 17.974,  $P < 0.001$ , D.F. = 1; Nagelkerke  $R^2$ : 0.33).

## DISCUSSION

This study assessed the influence of the factors associated with positive screening for depression in a sample of patients with CVD hospitalized in a university hospital. After multiple comparisons, we found that positive screening for depression was significantly associated with

**Table 1** Factors associated with positive screening for depression (Hospital Anxiety and Depression scale - depression subscale score  $\geq 8$ ) in inpatients with cardiovascular diseases ( $n = 137$ )  $n$  (%)

	Screening for depression		Missing data (%)	P value
	Yes	No		
Sociodemographic variables				
Gender				
Male	15 (39.5)	77 (77.8)	-	< 0.001 <sup>a</sup>
Female	23 (60.5)	22 (22.2)	-	
Age, mean (SD)	53.7 ± 11.4	51.5 ± 12.8	-	0.444
Elder (aged ≥ 60 yr)	15 (39.5)	24 (24.2)	-	0.077
Educational level in years (mean ± SD)	7.4 ± 4.4	8.5 ± 4.3	1.5	0.035 <sup>b</sup>
Married/lives with partner	25 (65.8)	70 (70.7)	0.7	0.723
Lives alone	3 (8.1)	9 (9.1)	0.7	0.857
Any son	34 (91.9)	83 (84.7)	1.5	0.272
Unemployed	9 (24.3)	23 (23.5)	1.5	0.917
Religion	35 (94.6)	91 (91.9)	0.7	0.595
Clinical variables				
N° of previous hospital admissions, mean (SD)	7.6 ± 9.1	5 ± 5.2	5.8	0.07 <sup>b</sup>
CAD	18 (47.4)	58 (58.6)	-	0.237
Congestive heart failure	12 (31.6)	31 (31.3)	-	0.976
Cardiac arrhythmia	5 (13.3)	10 (10.1)	-	0.76
Hypertension	19 (50)	56 (56.6)	-	0.489
Diabetes mellitus	5 (13.2)	18 (18.2)	-	0.481
Pain level, mean (SD)	2.2 ± 2.9	1.3 ± 2.4	0.7	0.136
Propranolol	8 (21.1)	12 (13.5)	8.0	0.255
Dependence in basic ADL	10 (26.3)	14 (14.1)	0.7	0.09
Dependence in instrumental ADL	2 (22.2)	4 (17.4)	76.6	0.753
Psychosocial variables				
Family history of mental disorder	18 (47.4)	20 (20.2)	-	0.001 <sup>a</sup>
Previous suicide attempt	11 (28.9)	8 (8.2)	0.7	0.002 <sup>a</sup>
Moderate to severe nicotine dependence	7 (18.4)	10 (10.1)	-	0.186
Problematic alcohol use	7 (30.4)	13 (18.84)	32.8	0.243
Resilience score, WYS mean (SD)	138.5 ± 14.5	144.9 ± 14.9	2.9	0.029 <sup>b</sup>
Childhood trauma score, CTQ mean (SD)	46.4 ± 20.1	37.5 ± 12.6	8.8	0.004 <sup>b</sup>

<sup>a</sup> $\chi^2$  test significant if  $P < 0.05$ ; <sup>b</sup>Mann-Whitney test significant if  $P < 0.05$ . CAD: Coronary arterial disease; ADL: Activities of daily living; WYS: Wagnild and Young Scale; CTQ: Childhood Trauma Questionnaire.

**Table 2** Logistic regression analysis of factors associated with positive screening for depression (Hospital Anxiety and Depression scale - depression subscale score  $\geq 8$ ) in inpatients with coronary arterial disease

Variable	B	EP	Wald	OR	95%CI	P
Moderate to severe nicotine dependence	2.15	6.91	7.135	8.58	1.77-41.57	0.008
N <sup>o</sup> of previous hospital admissions	0.106	0.06	4.505	1.11	1.01-1.23	0.034
High childhood trauma severity (CTQ)	0.06	0.02	8.2	1.06	1.02-1.11	0.004
Constant	-4.664	0.01	16.141	0.01	0.00-0.09	< 0.001

$\chi^2$ : 17.974,  $P < 0.001$ , D.f. = 1; Nagelkerke  $R^2$ : 0.33. CTQ: Childhood Trauma Questionnaire.

childhood trauma, the severity of nicotine dependence, and the number of previous hospital admissions. These results partially agree with our initial hypothesis as no association was found with some of the factors previously related with major depression, such as: Personal and familiar antecedents of psychiatric disorders (e.g., suicide attempts, addictions), pain perception, a worse score of functionality, and a lower resilience level. To the best of our knowledge, only one study reported risk factors associated with depression in patients with CVD<sup>[30]</sup>. However, no study evaluated such a vast array of epidemiological, clinical and psychological factors associated with depression in patients hospitalized with CVD.

Our results should be regarded considering a few issues. First, our study has a cross-sectional design and, as such, hinders the evaluation of causality between the factors evaluated and major depression. Second, our sample included patients with different types of CVD. We have grouped the distinct disorders in a unique group as they share common risk factors and etiological mechanisms associated with inflammatory processes; previous studies have adopted this same strategy<sup>[30]</sup>. Finally, we have not been able to assess the severity of CVD with an objective measure within this study.

Our sample presented a rate of 27.7% of patients screening positive for depression. This result is comparable with previous studies, which reported a prevalence of



13.5% to 47% of major depression in inpatients with CVD<sup>[16,30-33]</sup>. Different from previous studies, that reported only 5% of patients with CVD and depression were being treated with antidepressants<sup>[33]</sup>, in our sample, 23.7% of the subjects were taking an antidepressant.

Stressful experiences during the lifespan have been associated with CVD<sup>[34]</sup> and depression<sup>[35]</sup>. Childhood trauma is one of the most significant predictors of health problems, life expectancy, psychiatric disorders and the severity of clinical diseases' courses<sup>[36]</sup>. The occurrence of childhood trauma can influence the development of CVD through changes in metabolic, cardiovascular risk factors like dyslipidemia, central obesity, and hyperglycemia. A Dutch cohort study found that among the childhood trauma subtypes and personality traits, sexual abuse was the primary factor that correlated negatively with serum cholesterol and abdominal circumference measurements<sup>[37]</sup>. Recurrent stressful events may induce a subtle chronic inflammatory response, enough to contribute to the progression of atherosclerosis and increased the risk of developing CAD<sup>[38]</sup>. Our results highlight the importance of the assessment of childhood trauma in patients with CVD, as the severity of trauma may predict depression in this population. Clinicians must consider that one possible mechanism of the association between childhood trauma, depression and CVD is the disruption of the key stress-response system, such as the catecholamine system, the hypothalamic-pituitary-adrenal axis, and neurotrophic factors, in early stages of child development. The impairment of the stress response system can influence arousal and emotional behaviour and contribute to increase the allostatic load, impairing brain development and increasing the risk for psychopathology<sup>[36]</sup>.

As reported in the paper of Caro *et al.*<sup>[30]</sup>, our results point that nicotine dependence is associated with a positive screening for depression in CVD inpatients. Nicotine dependence is more prevalent in individuals with depression, possibly because these subjects are less prone to engage in smoking cessation programs<sup>[9]</sup> and tend to use nicotine to alleviate anxiety and dysphoria<sup>[39]</sup>. As other risk factors for CVD, cigarette use has been associated with damage of the arterial wall. Moreover, the intensification of cigarette use maintains inflammatory response, like chronic stress, and increases risk for depression and CVD<sup>[2]</sup>. Also, both depression and CVD increase the systemic pro-inflammatory state<sup>[2,7]</sup>, aggravating the pathophysiological mechanisms related to CVD and closing a vicious cycle<sup>[38]</sup>.

Presenting a greater number of previous hospital admissions was another factor associated with positive screening for depression in our study. These results agree with previous findings regarding inpatients with several medical illnesses<sup>[32]</sup>. Compared to those without depression, medical inpatients suffering from depression have longer hospital stays and higher readmission rates. Both factors underline the burden of this affective disorder among CVD patients, including the financial burden<sup>[12,40]</sup>. Moreover, each hospital admission can represent an acute stressor for those who experience

it, raising negative feelings about an individual's current health state and prognosis, augmenting depressive symptoms. In the same manner, a higher number of hospitalizations may represent a proxy for CVD severity. Other CVD severity measures were significantly associated with depression in inpatients, namely having an implantable cardioverter defibrillator or being in functional class III or IV<sup>[33]</sup>.

How can we link these three factors to CVD and major depression? In our view, either childhood trauma, nicotine dependence and the number of previous hospitalizations have been associated with stress arousal and pro-inflammatory states. Both conditions are well-known risk factors for major depression and CVD<sup>[36]</sup>.

Our results demonstrate that inpatients presenting both CVD and a positive screening for major depression are more prone to have antecedents of childhood trauma, nicotine dependence and a higher number of previous hospitalizations. Clinicians may consider these factors in the assessment of CVD inpatients at risk for major depression. This measure can improve their treatment approach and patients' prognoses.

## ACKNOWLEDGMENTS

We thank Mr. André A. C. de Freitas for performing the review and editing of this paper.

## COMMENTS

### Background

The prevalence of depression is considerably higher among individuals with cardiovascular diseases (CVD) when compared to the general population. Both major depression and depressive symptoms are predictors of poor outcome in patients with CVD. Depressive disorder is frequently overlooked and untreated in individuals with CVD.

### Innovations and breakthroughs

This study assessed the influence of the factors associated with positive screening for depression in a sample of patients with CVD hospitalized in a university hospital. After multiple comparisons, the authors found that positive screening for depression was significantly associated with childhood trauma, the severity of nicotine dependence, and the number of previous hospital admissions.

### Applications

The results demonstrate that inpatients presenting both CVD and a positive screening for major depression are more prone to have antecedents of childhood trauma, nicotine dependence and a higher number of previous hospitalizations. Clinicians may consider these factors in the assessment of CVD inpatients at risk for major depression. This measure can improve their treatment approach and patients' prognoses.

### Peer-review

This is a cross-sectional survey of risk factors associated with depression in patients hospitalized in non-surgical wards and suffering in cardiovascular disease. As both cardiovascular diseases and depression are frequent and possessing a great burden on the family and the society, the study is relevant and interesting.

## REFERENCES

1. Charlson FJ, Moran AE, Freedman G, Norman RE, Stapelberg

- NJ, Baxter AJ, Vos T, Whiteford HA. The contribution of major depression to the global burden of ischemic heart disease: a comparative risk assessment. *BMC Med* 2013; **11**: 250 [PMID: 24274053 DOI: 10.1186/1741-7015-11-250]
- 2 **Nemeroff CB**, Goldschmidt-Clermont PJ. Heartache and heart-break--the link between depression and cardiovascular disease. *Nat Rev Cardiol* 2012; **9**: 526-539 [PMID: 22733213 DOI: 10.1038/nrcardio.2012.91]
- 3 **Fuster V**, Vedanthan R. Cardiovascular disease and the UN Millennium Development Goals: time to move forward. *Nat Clin Pract Cardiovasc Med* 2008; **5**: 593 [PMID: 18813335 DOI: 10.1038/npcardio1353]
- 4 **Maltzberg B**. Mortality among patients with involuntal melancholia. *Am J Psychiatr* 1937; **93**
- 5 **Meijer A**, Conradi HJ, Bos EH, Thombs BD, van Melle JP, de Jonge P. Prognostic association of depression following myocardial infarction with mortality and cardiovascular events: a meta-analysis of 25 years of research. *Gen Hosp Psychiatry* 2011; **33**: 203-216 [PMID: 21601716 DOI: 10.1016/j.genhosppsych.2011.02.007]
- 6 **Mannie ZN**, Williams C, Diesch J, Steptoe A, Leeson P, Cowen PJ. Cardiovascular and metabolic risk profile in young people at familial risk of depression. *Br J Psychiatry* 2013; **203**: 18-23 [PMID: 23703316 DOI: 10.1192/bjp.bp.113.126987]
- 7 **Elderson L**, Whooley MA. Depression and cardiovascular disease. *Prog Cardiovasc Dis* 2013; **55**: 511-523 [PMID: 23621961 DOI: 10.1016/j.pcad.2013.03.010]
- 8 **Seligman F**, Nemeroff CB. The interface of depression and cardiovascular disease: therapeutic implications. *Ann N Y Acad Sci* 2015; **1345**: 25-35 [PMID: 25809518 DOI: 10.1111/nyas.12738]
- 9 **Penninx BW**. Depression and cardiovascular disease: Epidemiological evidence on their linking mechanisms. *Neurosci Biobehav Rev* 2017; **74**: 277-286 [PMID: 27461915 DOI: 10.1016/j.neubiorev.2016.07.003]
- 10 **Mulle JG**, Vaccarino V. Cardiovascular disease, psychosocial factors, and genetics: the case of depression. *Prog Cardiovasc Dis* 2013; **55**: 557-562 [PMID: 23621965 DOI: 10.1016/j.pcad.2013.03.005]
- 11 **Botega NJ**, Mitsuushi GN, Azevedo RC, Lima DD, Fanger PC, Mauro ML, Gaspar KC, Silva VF. Depression, alcohol use disorders and nicotine dependence among patients at a general hospital. *Rev Bras Psiquiatr* 2010; **32**: 250-256 [PMID: 20602014]
- 12 **Sibitz I**, Berger P, Freidl M, Topitz A, Krautgartner M, Spiegel W, Katschnig H. ICD-10 or DSM-IV? Anhedonia, fatigue and depressed mood as screening symptoms for diagnosing a current depressive episode in physically ill patients in general hospital. *J Affect Disord* 2010; **126**: 245-251 [PMID: 20400184 DOI: 10.1016/j.jad.2010.03.023]
- 13 **Meyer FA**, Hugentobler E, Stauber S, Wilhelm M, Znoj H, von Känel R. Depressive symptoms at discharge from rehabilitation predict future cardiovascular-related hospitalizations. *Cardiology* 2015; **131**: 80-85 [PMID: 25870996 DOI: 10.1159/000375231]
- 14 **Lichtman JH**, Bigger JT, Blumenthal JA, Frasure-Smith N, Kaufmann PG, Lespérance F, Mark DB, Sheps DS, Taylor CB, Froelicher ES. Depression and coronary heart disease: recommendations for screening, referral, and treatment: a science advisory from the American Heart Association Prevention Committee of the Council on Cardiovascular Nursing, Council on Clinical Cardiology, Council on Epidemiology and Prevention, and Interdisciplinary Council on Quality of Care and Outcomes Research: endorsed by the American Psychiatric Association. *Circulation* 2008; **118**: 1768-1775 [PMID: 18824640 DOI: 10.1161/CIRCULATIONAHA.108.190769]
- 15 **Rentsch D**, Dumont P, Borgacci S, Carballeira Y, deTonnac N, Archinard M, Andreoli A. Prevalence and treatment of depression in a hospital department of internal medicine. *Gen Hosp Psychiatry* 2007; **29**: 25-31 [PMID: 17189741 DOI: 10.1016/j.genhosppsych.2006.08.008]
- 16 **Yanzón de la Torre A**, Oliva N, Echevarrieta PL, Pérez BG, Caporusso GB, Titaro AJ, Todaro Kicyla A, Cuatz M, Locatelli M, Nelson LM, Mac Mullen M, Baldessarini RJ, Daray FM. Major depression in hospitalized Argentine general medical patients: Prevalence and risk factors. *J Affect Disord* 2016; **197**: 36-42 [PMID: 26967917 DOI: 10.1016/j.jad.2016.02.066]
- 17 **Feinstein RE**, Blumenfeld M, Orlowski B, Frishman WH, Ovanessian S. A national survey of cardiovascular physicians' beliefs and clinical care practices when diagnosing and treating depression in patients with cardiovascular disease. *Cardiol Rev* 2006; **14**: 164-169 [PMID: 16788327 DOI: 10.1097/01.crd.0000200977.41695.43]
- 18 **Fabbri RM**, Moreira MA, Garrido R, Almeida OP. Validity and reliability of the Portuguese version of the Confusion Assessment Method (CAM) for the detection of delirium in the elderly. *Arq Neuropsiquiatr* 2001; **59**: 175-179 [PMID: 11400020]
- 19 **Nasreddine ZS**, Phillips NA, Bédirian V, Charbonneau S, Whitehead V, Collin I, Cummings JL, Chertkow H. The Montreal Cognitive Assessment, MoCA: a brief screening tool for mild cognitive impairment. *J Am Geriatr Soc* 2005; **53**: 695-699 [PMID: 15817019 DOI: 10.1111/j.1532-5415.2005.53221.x]
- 20 **Trzepacz PT**, Hochstetler H, Wang S, Walker B, Saykin AJ. Relationship between the Montreal Cognitive Assessment and Mini-mental State Examination for assessment of mild cognitive impairment in older adults. *BMC Geriatr* 2015; **15**: 107 [PMID: 26346644 DOI: 10.1186/s12877-015-0103-3]
- 21 **Zigmond AS**, Snaith RP. The hospital anxiety and depression scale. *Acta Psychiatr Scand* 1983; **67**: 361-370 [PMID: 6880820 DOI: 10.1016/j.genhosppsych.2007.06.005]
- 22 **Botega NJ**, Bio MR, Zomignani MA, Garcia C, Pereira WA. [Mood disorders among inpatients in ambulatory and validation of the anxiety and depression scale HAD]. *Rev Saude Publica* 1995; **29**: 355-363 [PMID: 8731275]
- 23 **Carvalho DSK**. P A: Avaliação da intensidade da dor. *Migrâneas and Cefaleias* 2006; **9**: 164
- 24 **Katz S**, Ford AB, Moskowitz RW, Jackson BA, Jaffe MW. Studies of illness in the aged. the index of adl: a standardized measure of biological and psychosocial function. *JAMA* 1963; **185**: 914-919 [PMID: 14044222]
- 25 **Sanchez MAS**, Correa PCR, Lourenço RA. Cross-cultural adaptation of the "Functional Activities Questionnaire- FAQ" for use in Brazil. *Dement Neuropsychol* 2011; **5**: 322-327
- 26 **Saunders JB**, Aasland OG, Babor TF, de la Fuente JR, Grant M. Development of the Alcohol Use Disorders Identification Test (AUDIT): WHO Collaborative Project on Early Detection of Persons with Harmful Alcohol Consumption--II. *Addiction* 1993; **88**: 791-804 [PMID: 8329970]
- 27 **Fagerström KO**. Measuring degree of physical dependence to tobacco smoking with reference to individualization of treatment. *Addict Behav* 1978; **3**: 235-241 [PMID: 735910]
- 28 **Wagnild GM**, Young HM. Development and psychometric evaluation of the Resilience Scale. *J Nurs Meas* 1993; **1**: 165-178 [PMID: 7850498]
- 29 **Grassi-Oliveira R**, Stein LM, Pezzi JC. [Translation and content validation of the Childhood Trauma Questionnaire into Portuguese language]. *Rev Saude Publica* 2006; **40**: 249-255 [PMID: 16583035 DOI: 10.1590/S0034-89102006000200010]
- 30 **Caro MA**, Sowden GL, Mastromaro CA, Mahnks S, Beach SR, Januzzi JL, Huffman JC. Risk factors for positive depression screens in hospitalized cardiac patients. *J Cardiol* 2012; **60**: 72-77 [PMID: 22436292 DOI: 10.1016/j.jjcc.2012.01.016]
- 31 **Pakriev S**, Kovalev J, Mozhaev M. Prevalence of depression in a general hospital in Izhevsk, Russia. *Nord J Psychiatry* 2009; **63**: 469-474 [PMID: 19551555 DOI: 10.3109/08039480903062950]
- 32 **Yan ZY**, Gu MJ, Zhong BL, Wang C, Tang HL, Ling YQ, Yu XW, Li MQ. Prevalence, risk factors and recognition rates of depressive disorders among inpatients of tertiary general hospitals in Shanghai, China. *J Psychosom Res* 2013; **75**: 65-71 [PMID: 23751241 DOI: 10.1016/j.jpsychores.2013.03.003]
- 33 **Suzuki T**, Shiga T, Kuwahara K, Kobayashi S, Suzuki S, Nishimura K, Suzuki A, Omori H, Mori F, Ishigooka J, Kasanuki H, Hagiwara N. Depression and outcomes in hospitalized Japanese patients with cardiovascular disease. - Prospective single-center observational

- study-. *Circ J* 2011; **75**: 2465-2473 [PMID: 21791870]
- 34 **Bomhof-Roordink H**, Seldenrijk A, van Hout HP, van Marwijk HW, Diamant M, Penninx BW. Associations between life stress and subclinical cardiovascular disease are partly mediated by depressive and anxiety symptoms. *J Psychosom Res* 2015; **78**: 332-339 [PMID: 25736692 DOI: 10.1016/j.jpsychores.2015.02.009]
  - 35 **Teicher MH**, Samson JA. Childhood maltreatment and psychopathology: A case for ecophenotypic variants as clinically and neurobiologically distinct subtypes. *Am J Psychiatry* 2013; **170**: 1114-1133 [PMID: 23982148 DOI: 10.1176/appi.ajp.2013.12070957]
  - 36 **Duarte DG**, Neves Mde C, Albuquerque MR, de Souza-Duran FL, Busatto G, Corrêa H. Gray matter brain volumes in childhood-maltreated patients with bipolar disorder type I: A voxel-based morphometric study. *J Affect Disord* 2016; **197**: 74-80 [PMID: 26970268 DOI: 10.1016/j.jad.2016.02.068]
  - 37 **van Reedt Dortland AK**, Giltay EJ, van Veen T, Zitman FG, Penninx BW. Personality traits and childhood trauma as correlates of metabolic risk factors: the Netherlands Study of Depression and Anxiety (NESDA). *Prog Neuropsychopharmacol Biol Psychiatry* 2012; **36**: 85-91 [PMID: 22001949 DOI: 10.1016/j.pnpbp.2011.10.001]
  - 38 **Lagraauw HM**, Kuiper J, Bot I. Acute and chronic psychological stress as risk factors for cardiovascular disease: Insights gained from epidemiological, clinical and experimental studies. *Brain Behav Immun* 2015; **50**: 18-30 [PMID: 26256574 DOI: 10.1016/j.bbi.2015.08.007]
  - 39 **Minichino A**, Bersani FS, Calò WK, Spagnoli F, Francesconi M, Vicinanza R, Delle Chiaie R, Biondi M. Smoking behaviour and mental health disorders--mutual influences and implications for therapy. *Int J Environ Res Public Health* 2013; **10**: 4790-4811 [PMID: 24157506 DOI: 10.3390/ijerph10104790]
  - 40 **von Ammon Cavanaugh S**, Furlanetto LM, Creech SD, Powell LH. Medical illness, past depression, and present depression: a predictive triad for in-hospital mortality. *Am J Psychiatry* 2001; **158**: 43-48 [PMID: 11136632 DOI: 10.1176/appi.ajp.158.1.43]

**P- Reviewer:** Gazdag G, Hosak L **S- Editor:** Song XX **L- Editor:** A  
**E- Editor:** Li D





Published by **Baishideng Publishing Group Inc**  
7901 Stoneridge Drive, Suite 501, Pleasanton, CA 94588, USA  
Telephone: +1-925-223-8242  
Fax: +1-925-223-8243  
E-mail: [bpgoffice@wjgnet.com](mailto:bpgoffice@wjgnet.com)  
Help Desk: <http://www.f6publishing.com/helpdesk>  
<http://www.wjgnet.com>

