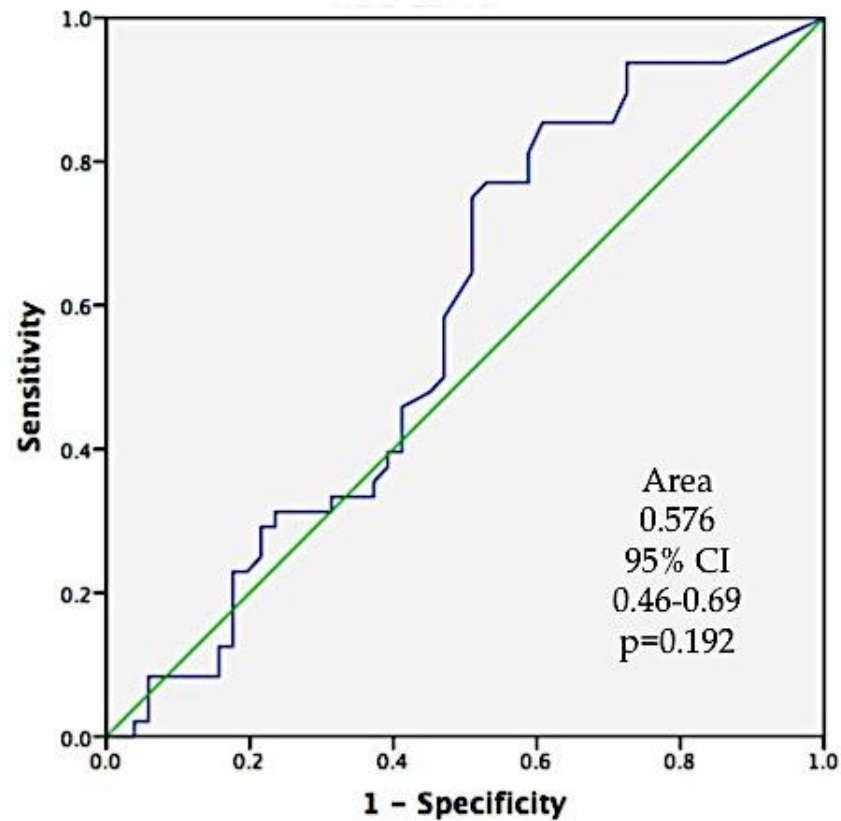


Supplementary materials



Supplementary Figure 1 Receiver operating characteristic (ROC) curve illustrating the diagnostic ability of serum beta-glucan in relation to magnetic resonance enterography criteria for detecting transmural Crohn's disease. Diagonal segment is produced by ties. The area under the curve (AUC) with the 95% confidence interval (CI) and the p value are shown in the plot.

Supplementary Table 1 Patient demographics and medical characteristics of the subgroup submitted to serial analysis of serum beta-glucan

<i>Parameters</i>	<i>Control</i>		<i>Crohn's disease</i>		<i>Ulcerative colitis</i>	
	<i>(n=12)</i>		<i>(n=29)</i>		<i>(n=12)</i>	
	<i>T0</i>	<i>T1</i>	<i>T0</i>	<i>T1</i>	<i>T0</i>	<i>T1</i>
<i>Females</i>	7 (58.3)		11 (37.9)		6 (60.0)	
<i>Age (y), median (IQR)</i>	55 (43-59)		45 (31-57)		43 (37-56)	
<i>Disease duration (y), median (IQR)</i>	-		6 (3-15)		8 (4-15)	
<i>Age at diagnosis (years)</i>						
<i>A1; A2; A3, n (%)</i>	-		2 (7); 17 (59); 10 (34)		1 (8); 6 (50); 5 (42)	
<i>Disease behavior</i>						
<i>B1; B2; B3, n (%)</i>	-		11 (38); 4 (14); 14 (48)		-	
<i>Disease location</i>						
<i>L1; L2; L3 / E1; E2; E3, n (%)</i>	-		4 (14); 6 (21); 19 (65)		3 (25); 4 (33); 5 (42)	
<i>Perianal disease</i>			7 (24)		-	
<i>Previous surgery</i>	-		10 (34.5)		0 (0)	
<i>Medical therapy</i>						
<i>Biologicals</i>			8 (27.6) 17 (58.6)		0 (0) 3 (25.0)	
<i>Immunossupressants</i>			20 (69.0) 25 (86.2)		4 (33.3) 7 (58.3)	

<i>Steroids</i>			7 (24.1)	3 (10.3)	3 (25.0)	3 (25.0)
<i>Salicylates</i>			12 (41.4)	3 (10.3)	8 (66.7)	11 (91.6)
<i>Clinically active</i>			29 (100)	3 (10.3)	12 (100)	6 (50.0)
<i>Endoscopically active</i>			29 (100)	19 (65.5)	12 (100)	7 (58.3)
<i>Histologically active</i>			17/21 (81.0)	4/17 (23.5)	4/8 (50.0)	0/8 (0)
<i>Beta-glucan, µg/mL</i>	13 (8-20)	11.5 (7-19.5)	118 (44-219)	29 (11-44)	53 (28-153)	22 (8.3-36)

T0 and T1 refer to different time points, including baseline data and after the therapeutic intervention (after 12 to 16 weeks), respectively. Values are presented as number (percentage) or median (interquartile range, IQR); age at diagnosis, disease behavior and location are based on the Montreal classification; previous surgery refers to IBD-related abdominal surgeries.

Supplementary Table 2 Performance of serum beta-glucan for detecting inflammatory activity in Crohn's disease based on histological analysis and magnetic resonance enterography

Beta-glucan		Deep	Histologic healing/	Transmural healing/	No	
$\mu\text{g/mL}$	All patients	healing	Transmural	Histologic	Healing	<i>P</i>
cut-off	(n=62)	(n=19)	(n=17)	(n=13)	(n=13)	value
<40 / >40	30 / 32	13 (68.4%)	7 (41.2%)	10 (76.9%)	9 (69.2%)	0.033
<60 / >60	24 / 38	16 (84.2%)	6 (35.3%)	8 (61.5%)	7 (53.8%)	0.038

Deep healing is defined by the absence of histologic or transmural inflammation; no healing is defined by the presence of both histologic and transmural inflammation.