



## Direct hepatic differentiation of mouse embryonic stem cells induced by valproic acid and cytokines

Xue-Jun Dong, Guo-Rong Zhang, Qing-Jun Zhou, Ruo-Lang Pan, Ye Chen, Li-Xin Xiang, Jian-Zhong Shao

Xue-Jun Dong, Guo-Rong Zhang, Molecular Medicine Center of Shaoxing People's Hospital, The First Affiliate Hospital of Shaoxing University, Shaoxing 312000, Zhejiang Province, China

Qing-Jun Zhou, Ruo-Lang Pan, Ye Chen, Li-Xin Xiang, Jian-Zhong Shao, College of Life Sciences, Zhejiang University, Hangzhou 310058, Zhejiang Province, China; Key Laboratory for Cell and Gene Engineering of Zhejiang Province, Hangzhou 310058, Zhejiang Province, China

**Author contributions:** Dong XJ and Zhang GR designed the research and analyzed the data; Zhou QJ designed and performed the research; Chen Y, Pan RL and Xiang LX performed the research and analyzed the data; Shao JZ designed the research, analyzed the data and edited the manuscript.

**Supported by** A grant from Medicine and Health Key Project of Zhejiang Province, Science and Technology Foundation of Ministry of Health of the People's Republic of China, No. WKJ2007-2-037, and Shaoxing Key Project for Science and Technology, No. 2007A23008, 2005141

**Correspondence to:** Jian-Zhong Shao, Professor, College of Life Sciences, Zhejiang University, Hangzhou 310058, Zhejiang Province, China. [dxj9666@163.com](mailto:dxj9666@163.com)

Telephone: +86-571-88206582 Fax: +86-571-88206582

Received: August 2, 2009 Revised: September 18, 2009

Accepted: September 25, 2009

Published online: November 7, 2009

for the analyses of cell cycle profile and apoptosis in VPA-induced hepatic differentiated cells.

**RESULTS:** Based on the combination of VPA and cytokines, mouse ES cells differentiated into a uniform and homogeneous cell population of hepatic progenitor cells and then matured into functional hepatocytes. The progenitor population shared several characteristics with ES cells and hepatic stem/progenitor cells, and represented a novel progenitor cell between ES and hepatic oval cells in embryonic development. The differentiated hepatocytes from progenitor cells shared typical characteristics with mature hepatocytes, including the patterns of gene expression, immunological markers, *in vitro* hepatocyte functions and *in vivo* capacity to restore acute-damaged liver function. In addition, the differentiation of hepatic progenitor cells from ES cells was accompanied by significant cell cycle arrest and selective survival of differentiating cells towards hepatic lineages.

**CONCLUSION:** Hepatic cells of different developmental stages from early progenitors to matured hepatocytes can be acquired in the appropriate order based on sequential induction with VPA and cytokines.

© 2009 The WJG Press and Baishideng. All rights reserved.

### Abstract

**AIM:** To develop a protocol for direct hepatic lineage differentiation from early developmental progenitors to a population of mature hepatocytes.

**METHODS:** Hepatic progenitor cells and then mature hepatocytes from mouse embryonic stem (ES) cells were obtained in a sequential manner, induced by valproic acid (VPA) and cytokines (hepatocyte growth factor, epidermal growth factor and insulin). Morphological changes of the differentiated cells were examined by phase-contrast microscopy and electron microscopy. Reverse transcription polymerase chain reaction and immunocytochemical analyses were used to evaluate the gene expression profiles of the VPA-induced hepatic progenitors and the hepatic progenitor-derived hepatocytes. Glycogen storage, cytochrome P450 activity, transplantation assay, differentiation of bile duct-like structures and tumorigenic analyses were performed for the functional identification of the differentiated cells. Furthermore, FACS and electron microscopy were used

**Key words:** Hepatic differentiation; Embryonic stem cells; Histone deacetylase inhibitor; Progenitor cell; Cell cycle arrest

**Peer reviewer:** Robin Hughes, Institute of Liver Studies, King's College London School of Medicine, Bessemer Road, London, SE5 9PJ, United Kingdom

Dong XJ, Zhang GR, Zhou QJ, Pan RL, Chen Y, Xiang LX, Shao JZ. Direct hepatic differentiation of mouse embryonic stem cells induced by valproic acid and cytokines. *World J Gastroenterol* 2009; 15(41): 5165-5175 Available from: URL: <http://www.wjgnet.com/1007-9327/15/5165.asp> DOI: <http://dx.doi.org/10.3748/wjg.15.5165>

### INTRODUCTION

Hepatocyte transplantation is an alternative therapy strategy for liver failure or end-stage liver diseases<sup>[1,2]</sup>.

However, the shortage of donor hepatocytes and the difficulties for large scale hepatocyte amplification and function maintenance limit the clinical application of this cell-based therapy<sup>[3]</sup>. Embryonic stem (ES) cells, known for their capacity to proliferate indefinitely and differentiate into almost all types of cells including hepatocytes, have raised the hope of cellular replacement therapy for liver failure. The essential prerequisite for this purpose is to develop well-defined protocols for directing cellular differentiation into hepatic lineage, followed by selective isolation and proliferation *in vitro*. There have been several protocols available up till now for hepatic fate specification from ES cells, for example, the protocols based on spontaneous differentiation, combination of growth factors, co-culture with non-parenchymal liver cells and gene modifications<sup>[4-8]</sup>. However, most of the protocols currently used were devised to induce mature hepatocytes by using embryoid bodies that may result in low yield or purity of functional hepatocytes. Little documentation exists about a strategy for acquiring different developmental hepatic cells, for example, guiding differentiation of ES cells to hepatic progenitors and then to an entire population of mature hepatocytes to meet the requirements of precise study regarding the mechanisms of hepatic differentiation and potential clinical applications. Furthermore, more concise and reproducible methods to acquire abundant hepatic cells still remain to be developed, among which the direct hepatic differentiation from an ES monolayer without using embryoid bodies is most promising<sup>[9]</sup>.

Valproic acid (VPA), a histone deacetylase (HDAC) inhibitor, has been used as a new class of chemotherapeutic drug for cancer clinical purposes and as an inducer for stem cell differentiation<sup>[10-13]</sup>. It has exhibited profound therapeutic activity against hepatocellular carcinoma by inducing apoptosis and cell-cycle arrest<sup>[14-16]</sup>, and dramatic effects on cellular differentiation from stem cells, including cardiomyocyte differentiation from ES cells, neuronal differentiation from neural stem cells, and osteogenic and hepatic differentiation from bone marrow-derived mesenchymal stem cells (MSC)<sup>[17-20]</sup>. In a previous study, we established a method for hepatic differentiation from MSC using VPA, which provided preliminary evidence that VPA could facilitate hepatic differentiation<sup>[21]</sup>. However, little is known about whether VPA can induce the hepatic differentiation of ES cells. Here, we report such research and the development of a protocol for direct hepatic lineage differentiation, from early developmental progenitors to a population of mature hepatocytes, based on sequential induction with VPA and cytokines. Results show that VPA can direct the hepatic specification of ES cells and largely participates in the differentiation of ES cells into hepatic progenitors. Further differentiation of hepatic progenitors into mature hepatocytes requires supplementation with cytokines. The present study may not only be helpful for the clinical application of hepatocyte transplantation, but also provide an *in vitro* research model for the better investigation and understanding of the entire develop-

mental process of hepatocytes, from ES cells to hepatic progenitors, and then to mature hepatocytes. Furthermore, as VPA is an epigenetic modulator, so our results may also be of benefit to the research of mechanisms of epigenetic modifications during liver development.

## MATERIALS AND METHODS

### Reagents

VPA was purchased from Sigma (St Louis, MO); fetal bovine serum (FBS) was purchased from Hyclone (Rockville, MD); murine leukemia inhibitory factor (LIF) was purchased from Chemicon (Temecula, CA); mouse hepatocyte growth factor (mHGF), mouse epidermal growth factor (mEGF), oncostatin M (OSM), Insulin-Transferrin-Selenium (ITS), and collagen I were all from R&D systems (Minneapolis, MN); Matrigel was purchased from BD Biosciences (Palo Alto, CA); sheep anti-ALB antibodies were purchased from Biodesign (Saco, ME); rabbit anti-AFP, mouse anti-CK19 were from Dako (Copenhagen, Denmark); rat anti-OCT-4 was from R&D; mouse anti-SSEA-1 was from Developmental Hybridoma Bank of Iowa University; goat anti-mouse DLK was from Santa Cruz Biotechnology (Santa Cruz, CA, USA); rat anti-A6 was presented by Dr. Valentina Factor of NIH; FITC-conjugated bovine anti-sheep IgG, FITC-conjugated rabbit anti-goat IgG, FITC-conjugated goat anti-rabbit IgG, TRITC-conjugated goat anti-mouse IgG, TRITC-conjugated goat anti-rat IgG were all purchased from Dako; FITC-conjugated goat anti-mouse IgM was from Jackson ImmunoResearch Laboratories Inc. All other reagents were from Sigma (St. Louis, MO).

### Culture of mouse ES cells

Mouse ES D3 cells, provided by the Cell Biology Institute of the Chinese Academy of Sciences, were cultured on mitomycin C inactivated MEF feeder layers in high-glucose DMEM supplemented with 15% FBS, 2 mmol/L L-Glu, 0.1 mmol/L N-ME, 1% NEAA and 10 ng/mL murine LIF as described previously<sup>[22]</sup>. Briefly, MEF feeder cells were isolated from ICR mice at embryo day 13.5 and cultured at 37°C and 5% CO<sub>2</sub>. At approximately 80% confluence, the feeder cells were incubated with 10 µg/mL mitomycin C for 4 h and washed three times with PBS. Then the cells were replated at  $8 \times 10^4$  cells/cm<sup>2</sup> on to tissue culture flasks. After allowed for attachment overnight, the ES cells were seeded.

### Differentiation of hepatic cells from mouse ES cells

A protocol was designed to obtain the hepatic progenitor cells and then mature hepatocytes from mouse ES cells in a sequential manner (Figure 1). For differentiation of hepatic progenitor cells, ES cells were cultured in DME medium as described above with the exception of the withdrawal of feeder layer and LIF, and treated with 1 mmol/L VPA for 4-6 d, then the VPA was removed and recombinant mouse HGF 10 ng/mL was added for

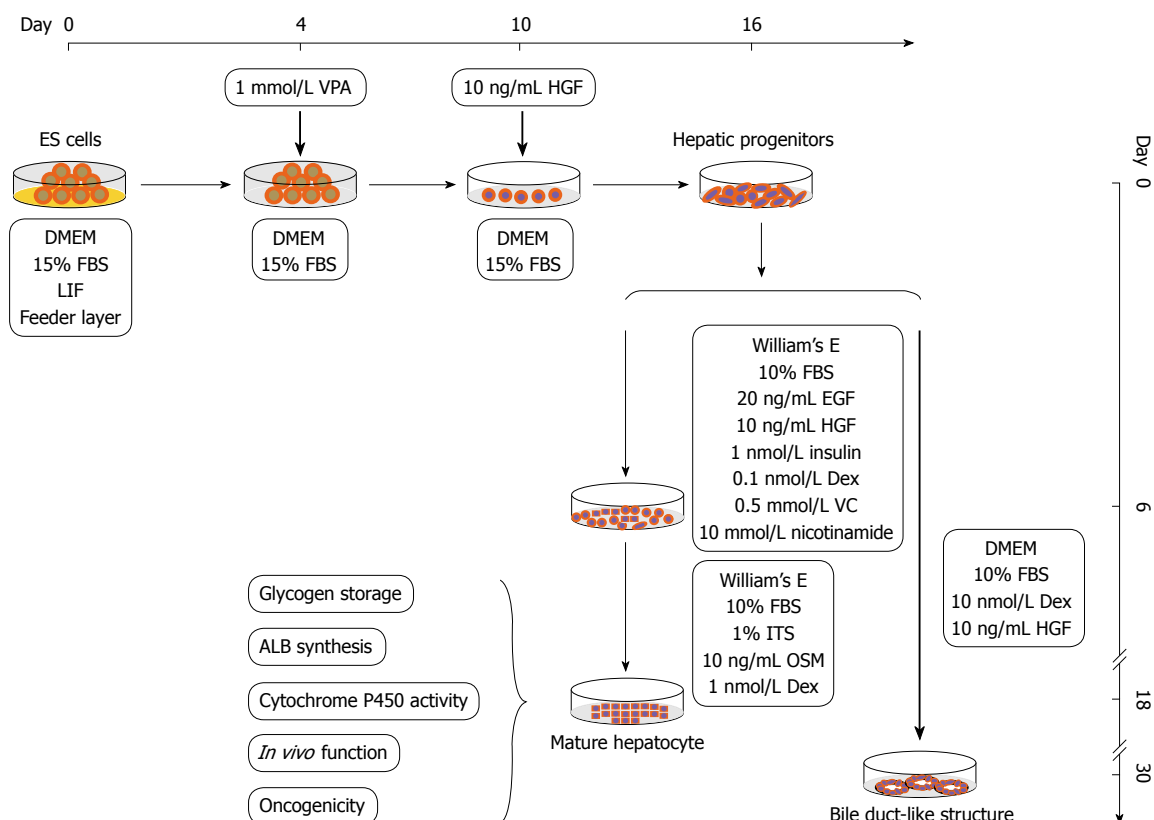


Figure 1 Schematic presentation of the protocol.

another 6–12 d until the hepatic progenitor cells became confluent. For differentiation of hepatocytes from hepatic progenitor cells, the progenitor cells were cultured in a William's E medium supplemented with 20 ng/mL mEGF, 10 ng/mL mHGF,  $10^{-6}$  mol/L insulin,  $10^{-7}$  mol/L Dex, 0.5 mmol/L ascorbic acid diphosphate, 10 mmol/L nicotinamide and 10% FBS (maturation medium I) for 6 d, and then replaced with another William's E medium containing 1% ITS, 10 ng/mL OSM and  $10^{-6}$  mol/L Dex (maturation medium II) for another 6–12 d.

#### Molecular and structural identification of the differentiated cells

**Gene expression analyses:** Total RNA was extracted from the ES cells, hepatic progenitor cells, mature hepatocytes and adult mouse liver using Nucleospin RNA Kits (BD Biosciences, Palo Alto, CA). RNA samples were digested with DNase I for 15 min at room temperature. cDNAs were synthesized from 1  $\mu$ g total RNA with a superscript III first-strand synthesis kit (Invitrogen, Carlsbad, CA) according to the manufacturer's instructions, and amplified with the following program: initial denaturation at 95°C for 5 min followed by 30–40 cycles of 94°C for 30 s, 50–56°C for 30 s, 72°C for 30 s and final extension at 72°C for 10 min. The amplified products were analyzed by electrophoresis on 1.5% agarose gel and stained with ethidium bromide. All the primers used are listed in Table 1.

**Immunocytochemical analyses:** Cells were fixed using 4% paraformaldehyde (PFA) followed by ice-cooled

methanol, and incubated with primary antibodies overnight at 4°C after blocking with 5% normal goat serum. For the application of SSEA-1 antigen, the cells were fixed with PFA only. Following washing with PBS three times, the cells were incubated with fluorescence-conjugated secondary antibodies, and examined under a Carl Zeiss confocal laser-scanning microscope.

**Electron microscopy:** Cells were fixed in 2.5% glutaraldehyde in 0.1 mmol/L phosphate buffer saline (pH 7.4) at 4°C for 24 h, post-fixed in 1% OsO<sub>4</sub> for 1 h, and embedded in Epon 812. They were cut into 30–40 nm sections for ultrastructural evaluation using a Philips TECNAL-10 transmission electron microscope.

#### Functional identification of the differentiated cells

**Glycogen storage:** At the final stage of differentiation, the cells were assessed by periodic acid-Schiff reaction for glycogen storage as previously described<sup>[23]</sup>. Briefly, cells were fixed in Carnoy's solution, oxidized in 1% periodic acid, treated with Schiff's reagent and examined under a Nikon microscope.

**Cytochrome P450 activity:** Cytochrome P450 activity was examined by ethoxyresorufin O-dealkylase assay. Briefly, cells were maintained under the same conditions in the presence or absence of 5  $\mu$ mol/L phenobarbital for 24 h followed by treatment with 5  $\mu$ mol/L ethoxyresorufin for 2–3 h, and then observed under Carl Zeiss confocal laser-scanning microscope at 355 nm excitation and 581 nm emission.

Table 1 Primers and annealing temperatures used for RT-PCR

Gene	Sequence (5'-3')	Product size (bp)	Annealing temperature (°C)
$\beta$ -actin-F	TTCCTTCITGGGTATGGAAT	200	55
$\beta$ -actin-R	GAGCAATGATCTTGATCTTC		
AFP-F	CACTGCTGCAACTCTTCGTA	300	52
AFP-R	CTTTGGACCCTCTTCTGTGA		
HNF3 $\beta$ -F	GACCTCTTCCCTTCTACCG	551	51
HNF3 $\beta$ -R	TTGAAGGCGTAATGGTGC		
TTR-F	TGCCTCGCTGGACTGGTAT	334	52
TTR-R	CAGAGTCGTGGCTGTGAA		
DPPIV-F	GATTCCATACCCAAAGGC	587	55
DPPIV-R	GGTCACAATAAGGCACT		
ALB-F	TCTTCGTCTCCGGCTCTG	475	55
ALB-R	CTGGCAACTTCATGCAAA		
OCT4-F	GGCGTTCCTTTGGAAAGGTGTTT	313	57
OCT4-R	CTCGAACCACATCTTCTCT		
AAT-F	AGAACCATTATCAGGCAGAA	675	55
AAT-R	AATAAGGAACGGCTAGTAAGA		
DLK-F	GGGGTGACTTCCGTTCG	510	52
DLK-R	GCTCTCGCCGCTGTTAT		
HNF4-F	CTTCCAAGAGCTGCAGATTG	517	55
HNF4-R	CTTGTAGGATTCAGATCCCG		
G6P-F	TCAATCTCTCTCGGTGGC	602	52
G6P-R	GGCAAAGGGTGATGTCAAG		
TAT-F	CTTCAGTGCTGGATGTTTCGC	619	55
TAT-R	CAGGGATTGGACGGGTGTGT		
TDO-F	TAAACAGAGCCAGCAAAG	868	56
TDO-R	ATGAGCGTGTCAATGTCC		
BG-F	CGTGAAGGATACGGGAGT	581	55
BG-R	CAGAGTTATTGACGAGGC		
GGT-F	TGTCCCTGGTGAAATCCG	577	55
GGT-R	GGCATAGGCAAACCGAAA		

AFP:  $\alpha$ -fetoprotein; HNF: Hepatocyte nuclear factor; TTR: Transthyretin; DPPIV: Cytokeratin 18; ALB: Albumin; OCT4: Octamer-4; AAT:  $\alpha$ -1-antitrypsin; DLK:  $\Delta$ -like (Pref-1, preadipocyte factor-1); G6p: Glucose-6-phosphatase; TAT: Tyrosine aminotransferase; TDO: Tryptophan 2,3-dioxygenase; BG: Biliary glycoprotein; GGT:  $\gamma$ -glutamyl transpeptidase.

**Transplantation assay:** To evaluate the *in vivo* function of differentiated hepatocytes, a transplantation assay was performed in CCl<sub>4</sub>-intoxicated mice as previously described<sup>[24]</sup>. Five ICR mice were injected intraperitoneally with 10% CCl<sub>4</sub> in olive oil (1 mL/kg body weight). After 6 h, mice underwent intrasplenic transplantation of differentiated hepatocytes at  $1 \times 10^6$  cells (0.1 mL of  $1 \times 10^7$  cells/mL) per mouse. The injection site was ligated to prevent cell leakage and bleeding. Mice were then sacrificed 24 h after transplantation, and sera were collected separately. Liver function was assessed by measuring the total bilirubin (T-Bil), ALT, AST and urea levels. Ten CCl<sub>4</sub>-intoxicated and untreated mice were used as controls.

**Differentiation of bile duct-like structures:** To evaluate the differentiation potential of progenitors into cholangiocytes, a spontaneous and directed bile duct-like structural differentiation assay was designed. For spontaneous differentiation, the progenitors were inoculated into the collagen I coated 96-well plate, and cultured with William's E medium supplemented with  $10^{-6}$  mol/L Dex, 10 ng/mL mHGF for 20-40 d until the special bile duct-like structures appeared. For directed differentiation,

the progenitors were seeded on a layer of Matrigel basement membrane matrix and cultured in the medium supplemented with 100 ng/mL mHGF and 50 ng/mL mEGF until the bile duct-like structures formed. Media were changed every 3 d.

**Tumorigenic analyses:** Undifferentiated ES cells and the hepatic progenitor cells were collected and suspended in DMEM medium ( $1 \times 10^7$  cells/mL). A 0.2 mL aliquot was injected subcutaneously into the backs of Balb/C nude mice. Each experimental group contained three animals. The animals were kept under a controlled lighting schedule with a 12-h dark period. Food and water were available *ad libitum*. All animals received humane care in compliance with institutional guidelines. Mice were sacrificed 6-8 wk after transplantation, the tumors and tumor-like tissues were fixed with formalin. After additional fixation in 4% paraformaldehyde for 2 h at 4°C, tissues were embedded in paraffin. Sections were stained with hematoxylin and eosin, and then microscopically observed.

#### Cell cycle and apoptosis analyses

Flow cytometry was performed to measure cell cycle distribution and apoptosis of VPA-treated cells. The measurements were made with a Becton Dickinson FACS Calibur machine, adapted for excitation with a 488 nm argon laser, and 582/42 nm band-pass filter for detecting propidium iodide emission.

#### Statistical analysis

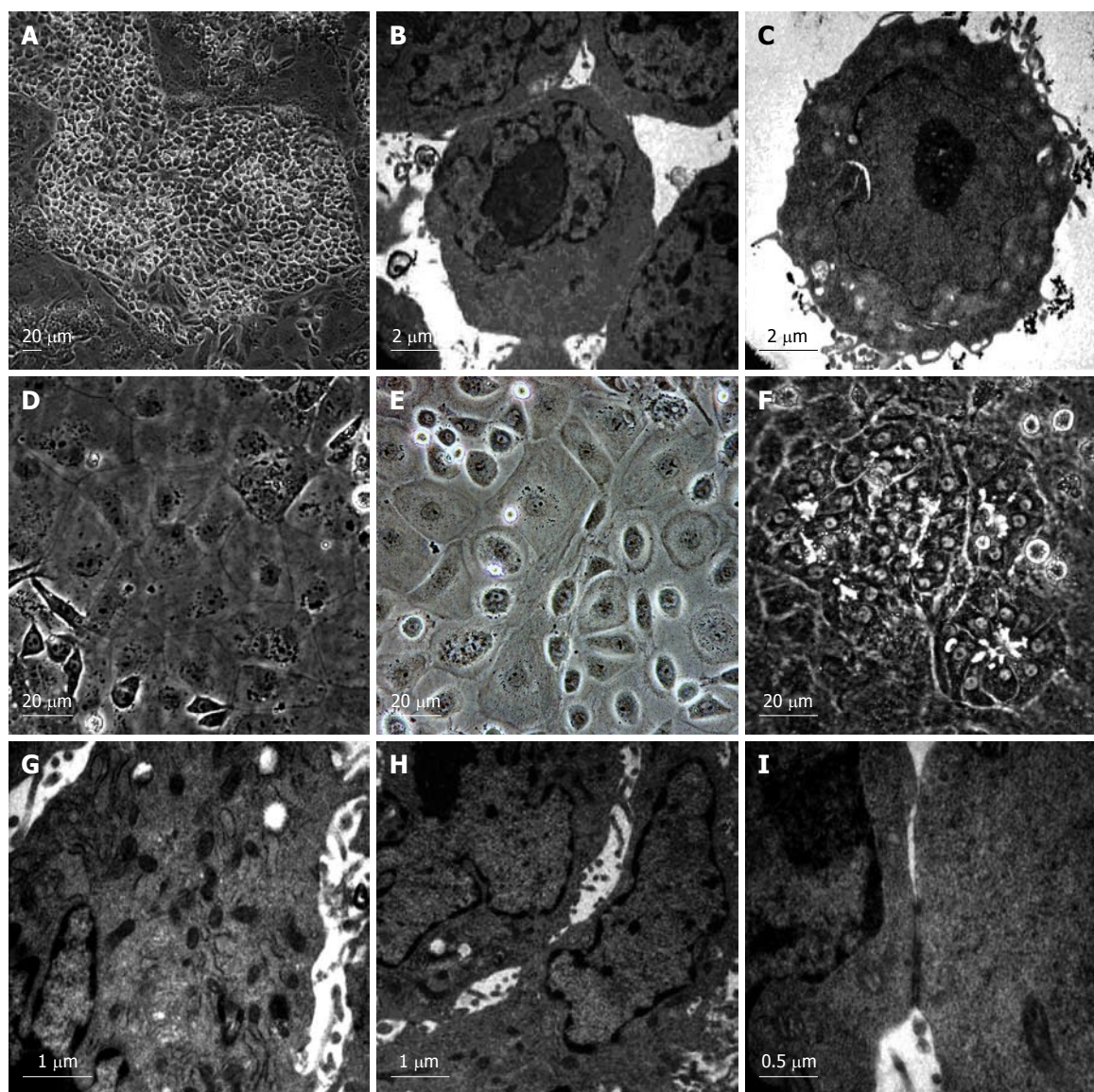
The data are presented as mean  $\pm$  SD. Statistical tests for the significance of differences between control and transplanted mice were performed by way of Student's *t* test. *P* < 0.05 was considered as statistically significant.

## RESULTS

#### Differentiation of hepatic progenitors from mouse ES cells induced by VPA

To examine whether VPA has an effect on hepatic fate differentiation from mouse ES cells, the ES cultures were subjected to VPA (1 mmol/L) after withdrawing feeder layers and LIF. After treatment for 4-6 d, a small round-shaped progenitor-like population appeared. These cells were then treated with recombinant mouse HGF (10 ng/mL) which allowed the promotion of cellular proliferation. After another 6-12 d, this progenitor-like population underwent rapid growth, and finally proliferated into confluence. The acquired progenitor-like cells exhibited 8-10  $\mu$ m in diameter, scant cytoplasm and a high nuclear to cytoplasmic ratio (Figure 2A), and resembled the blast-like oval cells proliferating during severe liver injury or the hepatoblasts found in fetal liver. Electron microscopic observation showed that the progenitor-like cells had abundant cell surface microvilli and shared scanty organelles except for a few mitochondria as in ES cells (Figure 2B and C). Noticeably, it was found that few mature functional hepatocytes





**Figure 2 Morphological observation of the differentiated cells.** A: Morphology of hepatic progenitor cells induced by VPA; B: Electron microscopic observation of the undifferentiated ES cells (control); C: Electron microscopic observation of the hepatic progenitor cells differentiated from ES cells; D, E: Morphological observation of typical hepatocytes differentiated from hepatic progenitor cells with flattened and cuboidal morphology, and acquired abundant granules in the cytoplasm; F: Morphological observation of another kind of hepatocyte-like cells differentiated from hepatic progenitor cells with rising and piled morphology, dark cytoplasm and light nuclei, and bile canaliculi-like structures found between these cells; G: Electron microscopic observation of the differentiated hepatocytes with abundant mitochondria in their cytoplasm; H: Electron microscopic observation of the bile canaliculi between adjacent cells as mentioned above (Figure 1F); I: The bile canaliculi between adjacent cells sealed with tight junctions.

could be acquired by treating the ES cells with VPA independently, and further differentiation into mature hepatocytes needed the combination of various cytokines, which indicated that VPA probably participates mainly in the regulation of early hepatic differentiation.

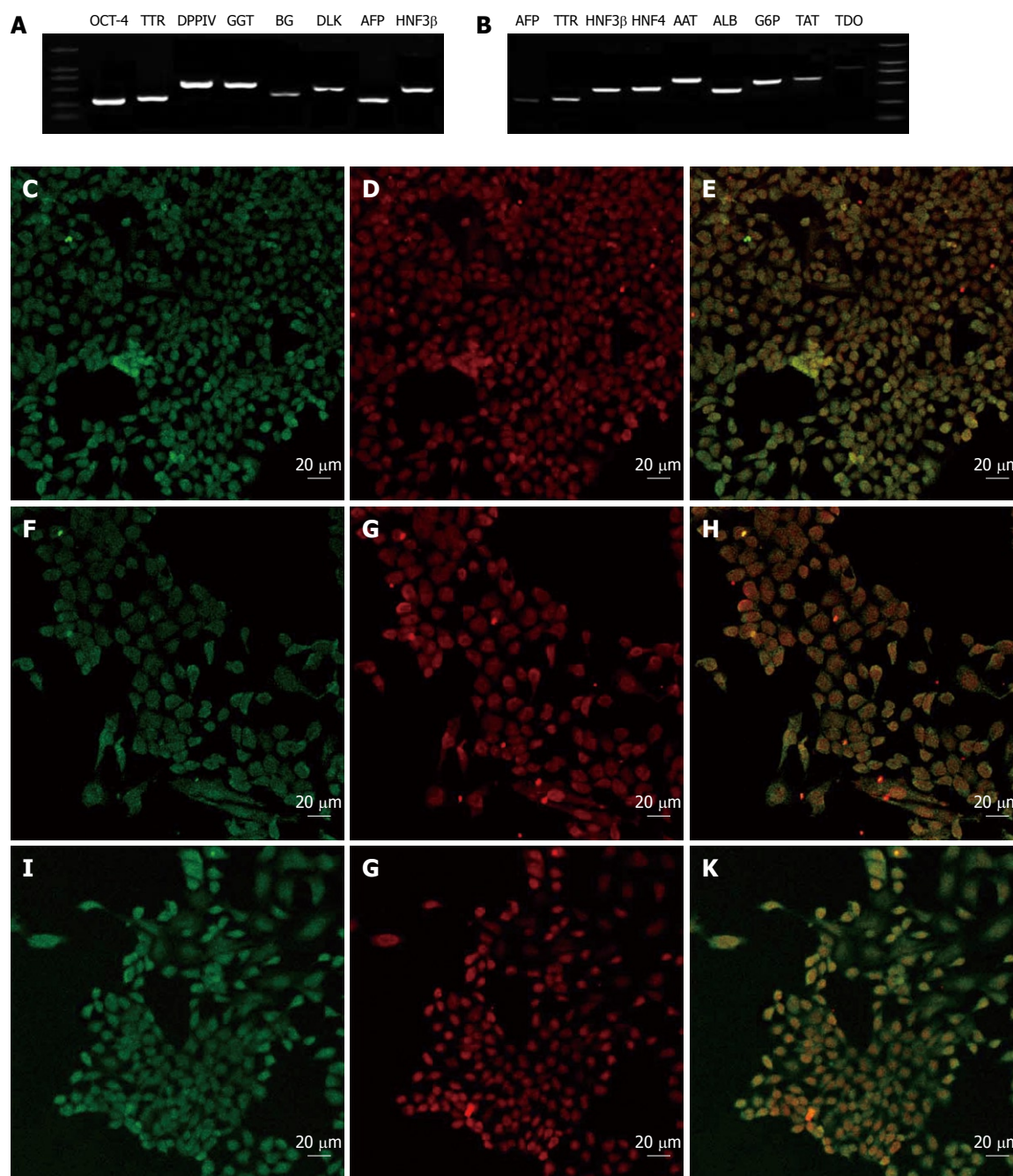
#### **Differentiation of hepatocytes from progenitors**

For maturation of functional hepatocytes from hepatic progenitors, the progenitor cells were further cultured in William's E medium (containing 10% FBS) supplemented with cytokines (EGF, HGF and insulin) and chemical inducers (Dex, ascorbic acid diphosphate and nicotinamide) for 6 d. Then, the cells were cultured in another medium containing ITS, OSM and Dex. After 6-12 d, two kinds of hepatocyte-like cells appeared. One exhibited typical hepatocyte features with a diameter of 20-40  $\mu\text{m}$ ,

flattened and cuboidal morphology, and had acquired abundant granules in the cytoplasm (Figure 2D and E). The other displayed a rising/piled morphology with dark cytoplasm and light nuclei, and bile canaliculi-like structures were often found between these cells (Figure 2F). Ultrastructural analyses revealed that both kinds of hepatocyte-like cells contained numerous mitochondria and endoplasmic reticulum (Figure 2G). Bile canaliculi were also observed between adjacent cells and sealed with tight junctions (Figure 2H and I). These results showed that functional hepatocytes could be acquired from VPA-induced progenitors under sequential induction combinations.

#### **Molecular identification of the hepatic lineage cells**

To evaluate the characterization of the VPA-induced hepatic progenitors and the hepatic progenitor-derived



**Figure 3** Gene expression analysis of VPA-induced hepatic lineage cells by RT-PCR and immunofluorescence staining. A: RT-PCR showed hepatic progenitor cells after the treatment with valproic acid expressing most typical markers of hepatic/hepatic stem cells; B: The hepatic progenitor-derived hepatocytes expressing typical markers of mature liver cells; C-E: Immunofluorescent images of AFP (C) and OCT-4 (D) staining in VPA-induced hepatic progenitor cells (E is the merged image of C and D); F-H: Immunofluorescent images of AFP (F) and CK19 (G) staining in VPA-induced hepatic progenitor cells (H is the merged image of F and G); I-K: Immunofluorescent images of AFP (I) and DLK (J) staining in VPA-induced hepatic progenitor cells (K is the merged image of I and J).

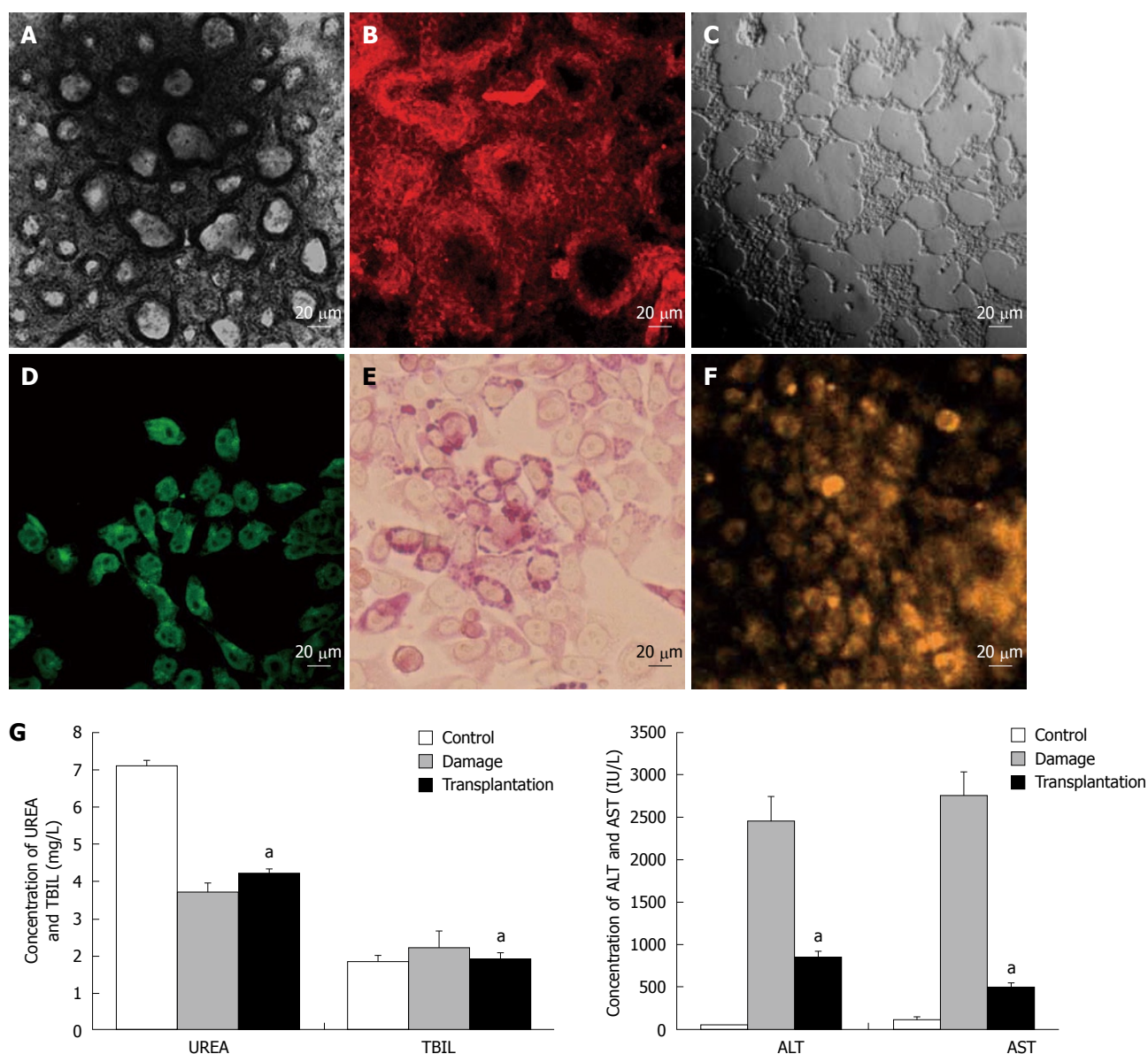
hepatocytes, a number of gene expression profiles were examined at mRNA and/or protein levels. The results showed that the undifferentiated ES cells expressed SSEA-1 and OCT-4, but no hepatic markers (data not shown). However, the progenitor cells expressed most typical markers of hepatic/hepatic stem cells, such as AFP, TTR, DPPIV, GGT, BG, HNF3β, CK19 and Dlk (Figure 3), but did not express the ES marker SSEA-1 or mature hepatocyte marker ALB (data not shown). Interestingly, the progenitor cells expressed the ES cell marker OCT-4, which suggested that the VPA-induced

hepatic progenitor cells may share partial properties of ES cells (Figure 3A and D). Accordingly, the hepatic progenitor-derived hepatocytes expressed typical markers of mature liver cells, including ALB, AAT, HNF4, G6p, TAT, AFP, TTR, HNF3β and TDO (Figure 3B).

#### **Functional characterization of the hepatic lineage cells**

For functional evaluation of the progenitor cells, the *in vitro* bi-differentiation potential of the progenitors into bile duct-like structures and mature hepatocytes was determined. The results showed that bile duct-like structures





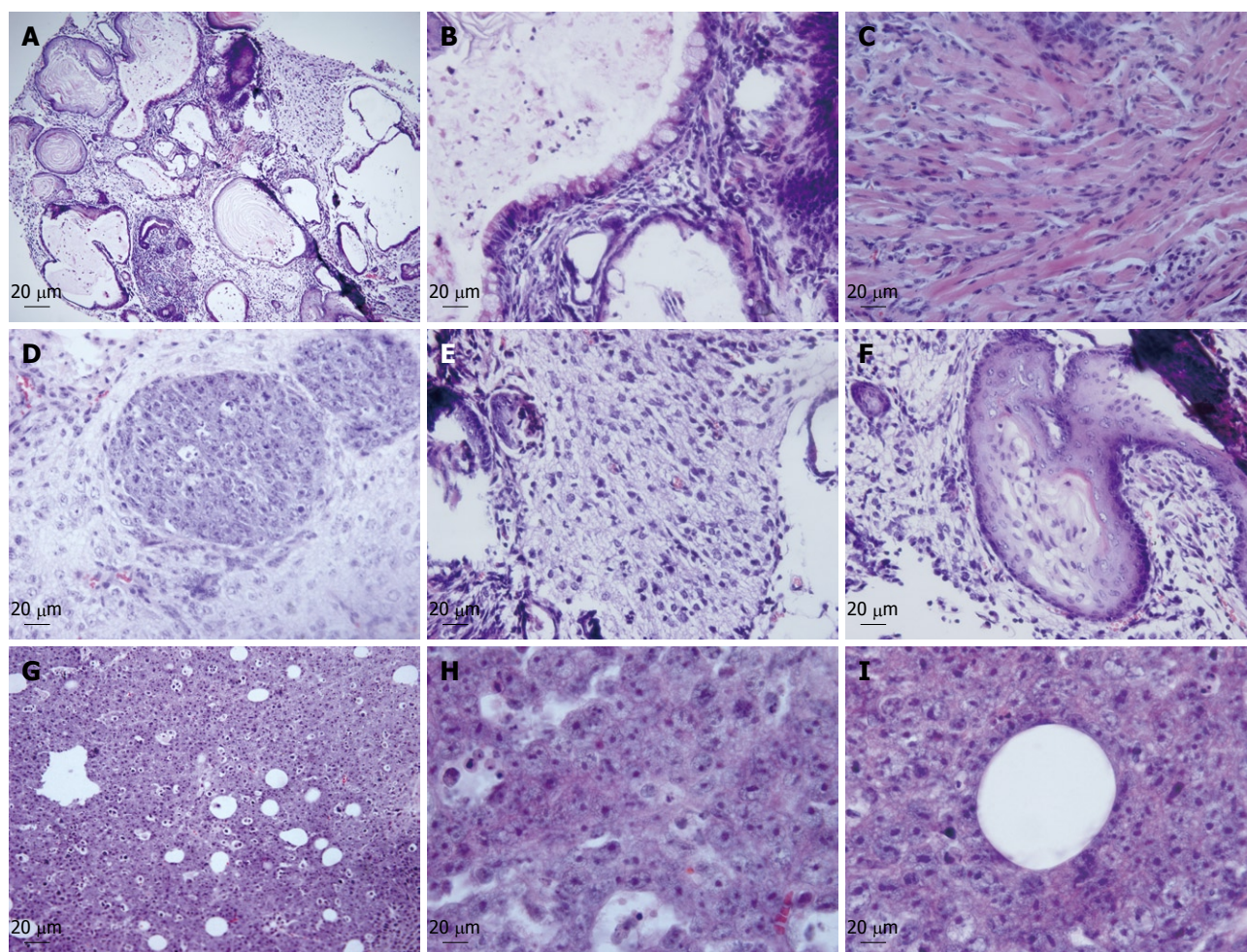
**Figure 4 Functional characterization of the hepatic lineage cells.** A: Bile duct-like structures formed from the VPA-induced hepatic progenitor cells cultured on collagen I coated dishes; B: Bile duct-like structures were stained CK19 positive; C: Bile duct-like structures formed from the VPA-induced hepatic progenitor cells cultured on Matrigel basement membrane matrix; D-F: Differentiated hepatocytes from hepatic progenitor cells could synthesize albumin (D), store glycogen (E) and possessed cytochrome P450 activity (F) after induction for 2-3 wk; G: When ES-HPCs derived hepatocytes were transplanted 6 h after liver intoxication, serum total bilirubin (TBIL), serum ammonia (UREA), AST and ALT levels were significantly improved towards normal at 1 d after the transplantation. <sup>a</sup>P < 0.05.

could be formed from the progenitor cells in two ways. In the first way, the progenitor cells were cultured on collagen I coated dishes in the medium supplemented with  $10^{-6}$  mol/L Dex and 10 ng/mL mHGF for about 30 d until the foci of small dark cells appeared, and these foci became organized and developed as doughnut-like structures identical to bile duct units (Figure 4A). In the second way, the progenitor cells were seeded on a layer of Matrigel basement membrane matrix and cultured in the medium supplemented with 100 ng/mL mHGF and 50 ng/mL mEGF as previously described. Many well-defined duct-like structures comprised of neatly aligned cells were found throughout the dish 1-2 d after inoculation, which developed into spherical 3-dimensional structures consisting of tightly packed columnar epithelium along with a central lumen when further maintained

for another 15 d (Figure 4C). Immunofluorescence analysis demonstrated that the structures were CK19-positive (Figure 4B) and AFP-negative (data not shown), which are typical hallmarks seen in the bile duct.

Accordingly, typical hepatocytes could also be attained from the progenitors as mentioned above. Functional characterization analyses showed that the differentiated hepatocytes could synthesize albumin (Figure 4D), store glycogen (Figure 4E) and possessed cytochrome P450 activity (Figure 4F) after differentiation for 2-3 wk. Furthermore, an *in vivo* transplantation assay of hepatocytes in acute-injured liver was performed. The results showed that when the differentiated hepatocytes were transplanted 6 h after liver intoxication, serum T-Bil, serum ammonia, AST and ALT levels were significantly ( $P < 0.05$ ) improved towards normal levels compared to con-





**Figure 5** *In vivo* multi-differentiation potential and tumorigenic analyses. A-F: The teratomas derived from ES cells were composed of a variety of types of differentiated cells from all three primary germ layers including secretory glands (B), muscle (C), epithelium (D), neuroectodermal cells (E) and cartilage (F); G-I: The tumor-like bumps derived from ES-HPCs contained only epithelial (H) and mesenchymal-like cells, and duct-like structures (I) surrounded by several epithelial cells were also observed.

trol mice without hepatocyte transplantation (Figure 4G), suggesting that the hepatocytes functioned normally *in vivo* and their transplantation improved the liver function of CCl<sub>4</sub>-treated mice.

#### **Tumorigenic and *in vivo* differentiation potential analyses**

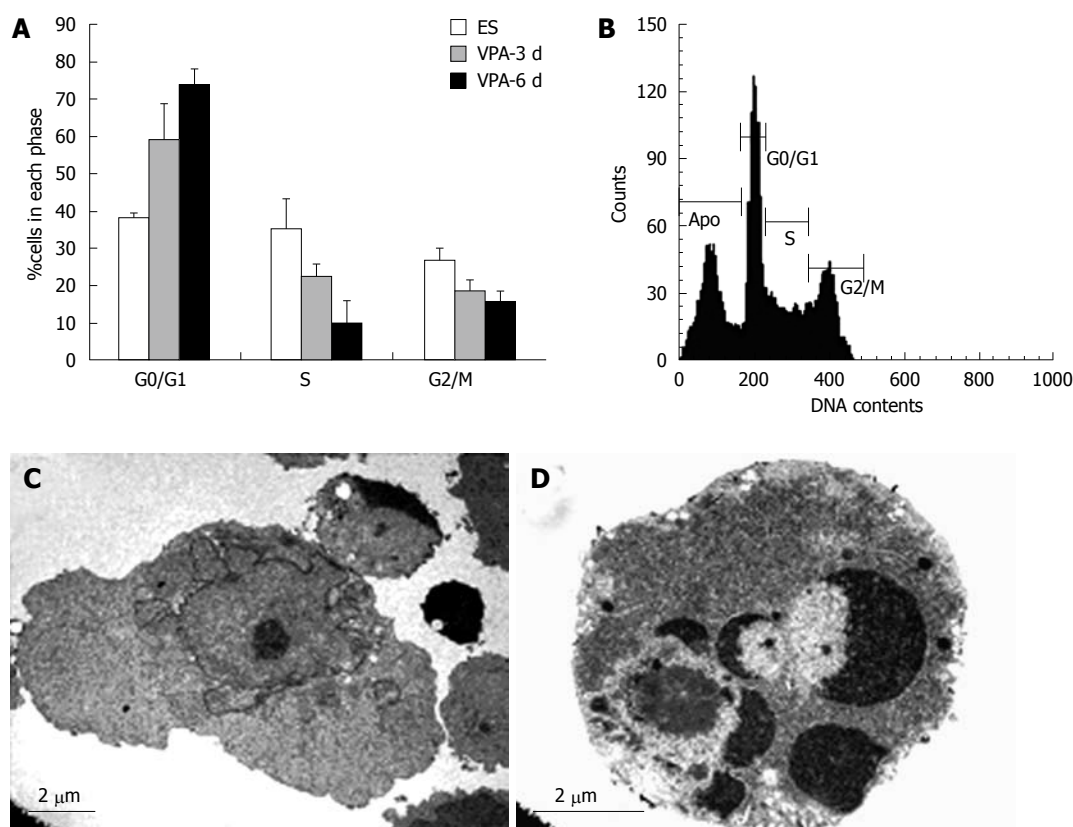
To evaluate the *in vivo* oncogenicity and differentiation potential of the progenitor cells, we introduced these cells and undifferentiated mES cells (as control) into Balb/c nude mice. Two weeks post-inoculation, the mice implanted with ES cells developed apparent teratomas at the injection site, while the mice with progenitor cells developed tumor-like bumps about 3-4 wk later. After the development of 6-8 wk, the teratomas and tumor-like bumps were fixed and examined with HE staining. The teratomas derived from ES cells were composed of a variety of types of differentiated cells from all three primary germ layers including neuroectodermal cells, adipocytes, muscle and epithelium (Figure 5A-F). However, the tumor-like bumps derived from the progenitor cells contained only epithelial and mesenchymal-like cells, and duct-like structures surrounded by epithelial cells were also observed (Figure 5G-I). The results further confirmed that

the progenitor cells have *in vivo* differentiation potential into hepatic lineages, and indicated the difference in *in vivo* potential between the undifferentiated ES cells and hepatic progenitor cells.

#### **Cell cycle and apoptosis analyses of VPA-induced hepatic differentiation**

To evaluate whether VPA had an effect on cell cycle profile, ES cells were exposed to 1 mmol/L VPA for 0, 3, 6 d and cell cycle analyses were performed with FACS. Results indicated that exposure to VPA decreased the proportion of cells in S phase and increased the G<sub>0</sub>/G<sub>1</sub> phase proportion. Approximately 75% of the cells were arrested in the G<sub>0</sub>/G<sub>1</sub> phase and only 10% of the cells were in the S phase after 6 d of treatment with VPA, whereas over 37% of control ES cells were in the S phase (Figure 6A). These data indicated that VPA could reduce the proliferation of ES cells and cause the inhibition of G<sub>1</sub>-S transition. In addition, DNA content analysis of the cells treated with VPA for 3 d showed that about 28% of the cells adopted apoptotic features (Figure 6B). Furthermore, the ultrastructural observations also showed that a considerable number of cells presented typical





**Figure 6 VPA-induced cell cycle arrest and apoptosis during hepatic differentiation.** A: Cell cycle analysis revealed that exposure to VPA decreased the proportion of cells in S phase and increased the proportion of cells in the G0/G1 phase. Approximately 75% of the cells were arrested in the G0/G1 phase and only 10% of the cells in the S phase after 6 d of treatment with 1 mmol/L VPA, whereas greater than 37% of control ES cells were in the S phase; B: The analysis of apoptosis proportions during 3 d of treatment with VPA; C, D: Ultrastructural observations showed that some cells presented typical apoptotic morphology when treated with VPA for more than 5 d.

apoptotic morphology after being treated with VPA for more than 5 d (Figure 6C and D).

## DISCUSSION

To develop well-defined *in vitro* protocols for directing cellular differentiation into hepatic lineage has become critical for better investigating the mechanisms of hepatocyte differentiation, and for providing seed cells for hepatic tissue engineering as well as for clinical purposes. Most of the protocols currently developed to induce the hepatic differentiation from ES cells were devised by using embryoid bodies. However, several disadvantages may exist in this method. For example, it is time-consuming to prepare the embryoid bodies, and hepatic differentiation through embryoid bodies may result in low yield and purity of functional hepatocytes. Therefore, direct hepatic fate differentiation from an ES monolayer without using embryoid bodies is a most promising concept. A previous study has demonstrated that hepatocyte-like cells could be directly induced from human ES cells by using a combination of cytokines, providing preliminary evidence of the possibilities for this method<sup>[25]</sup>. However, the direct hepatic differentiation of ES cells still remains a challenge and needs to be further developed. In the present study, we report a novel strategy for the direct hepatic fate differentiation

of ES cells, which allows hepatic differentiation from progenitor cells to functional hepatocytes, based on a combination of VPA and cytokines. The results show this strategy has obvious advantages, such as being easy to operate, well reproducible and capable of acquirement of abundant and uniform progenitor cells and mature hepatocytes, the latter of which are suitable for the large-scale requirements of cell replacement therapy. Noticeably, following this strategy, we can harvest progenitor cells and mature hepatocytes in a sequential order. Thus, it may provide an *in vitro* research model which could meet the requirement of precise study regarding the mechanisms of hepatic differentiation at different developmental stages.

In addition, histone acetylation is considered to be one of the most important epigenetic regulation processes involved in gene expression, which is largely controlled by HDAC inhibitors including VPA. The observation that VPA could induce hepatic progenitor differentiation from ES cells suggested that epigenetic regulation mediated by histone acetylation might play an important role in early hepatic development. Therefore, the VPA-induced hepatic differentiation may also provide a model for the study of early hepatic developmental events, such as the relationship between the initiation of hepatic differentiation and epigenetic modification.

By FACS and ultrastructural analysis, it was found

that treatment of ES cells with VPA significantly reduced the proportion of the cells in the S phase and promoted the accumulation in the G0/G1 phase, which was accompanied by cellular apoptosis. This finding suggests that cell cycle arrest and apoptosis are involved in the VPA-induced hepatic specification. Further study is needed to elucidate the exact molecular and cellular mechanisms underlying the VPA-induced hepatic cell fate determination from ES cells.

Several lines demonstrated that the VPA-induced progenitor cells possessed some distinctive characteristics distinguished from ES cells or traditionally identified hepatoblasts or hepatic oval cells. For example, the progenitor cells exhibited typical epithelial morphology when cultured in a collagen coated dish, while ES cells formed multilayer compact colonies. There were many condensed-stained heterochromatin areas in the nucleus of ES cells, while the progenitor cells were almost all euchromatic. Also, the results of an *in vivo* differentiation assay revealed that ES cells formed typical teratomas containing the structures of three primary germ layers, while the progenitor cells formed tumor-like bumps containing only epithelial and mesenchymal cells. Moreover, the acquired progenitor cells expressed a number of typical markers of hepatoblasts or oval cells, such as AFP, TTR, Foxa2, DPPIV, GGT and BG. Importantly, Dlk, a marker of hepatic stem cells (hepatoblasts or hepatic oval cells) recently reported<sup>[26-28]</sup>, was also expressed by the progenitor cells. However, investigation of the hepatic oval cell marker, A6, was negative<sup>[29,30]</sup>. In addition, the progenitor cells expressed OCT-4, a marker of multi-lineage stem/progenitor cells<sup>[31-33]</sup>. These data indicated that the acquired progenitor cells may represent a novel subset at a developmental stage between ES cells and the known hepatic stem/progenitor cells, suggesting that a novel progenitor population was involved in the VPA-induced hepatic differentiation. This finding will be of benefit for understanding more about the early differentiation of hepatocytes.

Importantly, mouse is an often-used model species for human disease, so the investigation of hepatic differentiation of mouse ES cells will be of benefit for the better understanding of mechanisms underlying human hepatic differentiation and the development involved. Our results also support the establishment of new strategies to acquire human hepatic progenitor cells as well as hepatocytes, which will be helpful for the solution of obtaining cell sources for clinical cytotherapy.

## COMMENTS

### Background

Embryonic stem (ES) cells, known for their capacity to proliferate indefinitely and differentiate into almost all types of cells including hepatocytes, have raised the hope of cellular replacement therapy for liver failure. There have been several protocols available for hepatic fate specification from ES cells, however, most of the protocols currently used result in low yield or purity of functional hepatocytes. Valproic acid (VPA), a histone deacetylase (HDAC) inhibitor, has been demonstrated to facilitate the hepatic differentiation of mesenchymal stem cells. However, little is known about whether VPA could induce the hepatic differentiation of ES cells.

### Research frontiers

The research hotspot is to develop well-defined protocols for directing cellular differentiation into hepatic lineage, followed by selective isolation and proliferation *in vitro*.

### Innovations and breakthroughs

In the present study, the authors report a novel strategy for the direct hepatic fate differentiation of ES cells, which allows the hepatic differentiation from progenitor cells to functional hepatocytes, based on using a combination of VPA and cytokines. The results show that this strategy has obvious advantages, such as being easy to operate, well reproducible and capable of acquirement of abundant and uniform progenitor cells and mature hepatocytes, the latter of which are suitable for the large-scale requirements of cell replacement therapy. Noticeably, following this strategy, they can harvest progenitor cells and mature hepatocytes in a sequential order. Thus, it may provide an *in vitro* research model which could meet the requirements of precise study regarding the mechanisms of hepatic differentiation at different developmental stages. In addition, the observation that VPA could induce hepatic progenitor differentiation from ES cells suggested that epigenetic regulation mediated by histone acetylation might play an important role in early hepatic development. Therefore, the VPA-induced hepatic differentiation may also provide a model for the study of early hepatic developmental events, such as the relationship between the initiation of hepatic differentiation and epigenetic modification.

### Applications

The present study may not only be helpful for the clinical application of hepatocyte transplantation, but also provide an *in vitro* research model for the better investigation and understanding of the entire developmental process of hepatocytes, from ES cells to hepatic progenitors, and then to a population of mature hepatocytes.

### Terminology

VPA, a HDAC inhibitor, has been used as a new class of chemotherapeutic drug for cancer clinical purposes and as an inducer for stem cell differentiation.

### Peer review

This is an important area for research to find new sources of hepatocytes for future clinical application. The authors have performed a good study.

## REFERENCES

- 1 Tanaka K, Soto-Gutierrez A, Navarro-Alvarez N, Rivas-Carrillo JD, Jun HS, Kobayashi N. Functional hepatocyte culture and its application to cell therapies. *Cell Transplant* 2006; **15**: 855-864
- 2 Strom SC, Bruzzone P, Cai H, Ellis E, Lehmann T, Mitamura K, Miki T. Hepatocyte transplantation: clinical experience and potential for future use. *Cell Transplant* 2006; **15** Suppl 1: S105-S110
- 3 Nussler A, Konig S, Ott M, Sokal E, Christ B, Thasler W, Brulport M, Gabelein G, Schormann W, Schulze M, Ellis E, Kraemer M, Nocken F, Fleig W, Manns M, Strom SC, Hengstler JG. Present status and perspectives of cell-based therapies for liver diseases. *J Hepatol* 2006; **45**: 144-159
- 4 Zhou QJ, Huang YD, Xiang LX, Shao JZ, Zhou GS, Yao H, Dai LC, Lu YL. In vitro differentiation of embryonic stem cells into hepatocytes induced by fibroblast growth factors and bone morphological protein-4. *Int J Biochem Cell Biol* 2007; **39**: 1714-1721
- 5 Yamamoto H, Quinn G, Asari A, Yamanokuchi H, Teratani T, Terada M, Ochiya T. Differentiation of embryonic stem cells into hepatocytes: biological functions and therapeutic application. *Hepatology* 2003; **37**: 983-993
- 6 Chinzei R, Tanaka Y, Shimizu-Saito K, Hara Y, Kakinuma S, Watanabe M, Teramoto K, Arai S, Takase K, Sato C, Terada N, Teraoka H. Embryoid-body cells derived from a mouse embryonic stem cell line show differentiation into functional hepatocytes. *Hepatology* 2002; **36**: 22-29
- 7 Yamada T, Yoshikawa M, Kanda S, Kato Y, Nakajima Y, Ishizaka S, Tsunoda Y. In vitro differentiation of embryonic stem cells into hepatocyte-like cells identified by cellular uptake of indocyanine green. *Stem Cells* 2002; **20**: 146-154
- 8 Cai J, Zhao Y, Liu Y, Ye F, Song Z, Qin H, Meng S, Chen Y, Zhou R, Song X, Guo Y, Ding M, Deng H. Directed



- differentiation of human embryonic stem cells into functional hepatic cells. *Hepatology* 2007; **45**: 1229-1239
- 9 **Teratani T**, Yamamoto H, Aoyagi K, Sasaki H, Asari A, Quinn G, Sasaki H, Terada M, Ochiya T. Direct hepatic fate specification from mouse embryonic stem cells. *Hepatology* 2005; **41**: 836-846
  - 10 **Marks P**, Rifkind RA, Richon VM, Breslow R, Miller T, Kelly WK. Histone deacetylases and cancer: causes and therapies. *Nat Rev Cancer* 2001; **1**: 194-202
  - 11 **Cress WD**, Seto E. Histone deacetylases, transcriptional control, and cancer. *J Cell Physiol* 2000; **184**: 1-16
  - 12 **Glozak MA**, Seto E. Histone deacetylases and cancer. *Oncogene* 2007; **26**: 5420-5432
  - 13 **Huang L**. Targeting histone deacetylases for the treatment of cancer and inflammatory diseases. *J Cell Physiol* 2006; **209**: 611-616
  - 14 **Venturelli S**, Armeanu S, Pathil A, Hsieh CJ, Weiss TS, Vonthein R, Wehrmann M, Gregor M, Lauer UM, Bitzer M. Epigenetic combination therapy as a tumor-selective treatment approach for hepatocellular carcinoma. *Cancer* 2007; **109**: 2132-2141
  - 15 **Pathil A**, Armeanu S, Venturelli S, Mascagni P, Weiss TS, Gregor M, Lauer UM, Bitzer M. HDAC inhibitor treatment of hepatoma cells induces both TRAIL-independent apoptosis and restoration of sensitivity to TRAIL. *Hepatology* 2006; **43**: 425-434
  - 16 **Armeanu S**, Pathil A, Venturelli S, Mascagni P, Weiss TS, Göttlicher M, Gregor M, Lauer UM, Bitzer M. Apoptosis on hepatoma cells but not on primary hepatocytes by histone deacetylase inhibitors valproate and ITF2357. *J Hepatol* 2005; **42**: 210-217
  - 17 **Hsieh J**, Nakashima K, Kuwabara T, Mejia E, Gage FH. Histone deacetylase inhibition-mediated neuronal differentiation of multipotent adult neural progenitor cells. *Proc Natl Acad Sci USA* 2004; **101**: 16659-16664
  - 18 **Siebzehnrbuhl FA**, Buslei R, Eyupoglu IY, Seufert S, Hahnen E, Blumcke I. Histone deacetylase inhibitors increase neuronal differentiation in adult forebrain precursor cells. *Exp Brain Res* 2007; **176**: 672-678
  - 19 **Rambhatla L**, Chiu CP, Kundu P, Peng Y, Carpenter MK. Generation of hepatocyte-like cells from human embryonic stem cells. *Cell Transplant* 2003; **12**: 1-11
  - 20 **Cho HH**, Park HT, Kim YJ, Bae YC, Suh KT, Jung JS. Induction of osteogenic differentiation of human mesenchymal stem cells by histone deacetylase inhibitors. *J Cell Biochem* 2005; **96**: 533-542
  - 21 **Chen Y**, Pan RL, Zhang XL, Shao JZ, Xiang LX, Dong XJ, Zhang GR. Induction of hepatic differentiation of mouse bone marrow stromal stem cells by the histone deacetylase inhibitor VPA. *J Cell Mol Med* 2008; [Epub ahead of print]
  - 22 **Zhou QJ**, Shao JZ, Xiang LX, Hu RZ, Lu YL, Yao H, Dai LC. Generation of embryoid bodies from mouse embryonic stem cells cultured on STO feeder cells. *Cell Biol Int* 2005; **29**: 817-825
  - 23 **Kania G**, Blyszczuk P, Jochheim A, Ott M, Wobus AM. Generation of glycogen- and albumin-producing hepatocyte-like cells from embryonic stem cells. *Biol Chem* 2004; **385**: 943-953
  - 24 **Kumashiro Y**, Asahina K, Ozeki R, Shimizu-Saito K, Tanaka Y, Kida Y, Inoue K, Kaneko M, Sato T, Teramoto K, Arai S, Teraoka H. Enrichment of hepatocytes differentiated from mouse embryonic stem cells as a transplantable source. *Transplantation* 2005; **79**: 550-557
  - 25 **Hay DC**, Zhao D, Ross A, Mandalam R, Lebkowski J, Cui W. Direct differentiation of human embryonic stem cells to hepatocyte-like cells exhibiting functional activities. *Cloning Stem Cells* 2007; **9**: 51-62
  - 26 **Tanimizu N**, Tsujimura T, Takahide K, Kodama T, Nakamura K, Miyajima A. Expression of Dlk/Pref-1 defines a subpopulation in the oval cell compartment of rat liver. *Gene Expr Patterns* 2004; **5**: 209-218
  - 27 **Tanimizu N**, Saito H, Mostov K, Miyajima A. Long-term culture of hepatic progenitors derived from mouse Dlk+ hepatoblasts. *J Cell Sci* 2004; **117**: 6425-6434
  - 28 **Tanimizu N**, Nishikawa M, Saito H, Tsujimura T, Miyajima A. Isolation of hepatoblasts based on the expression of Dlk/Pref-1. *J Cell Sci* 2003; **116**: 1775-1786
  - 29 **Engelhardt NV**, Factor VM, Medvinsky AL, Baranov VN, Lazareva MN, Poltoranina VS. Common antigen of oval and biliary epithelial cells (A6) is a differentiation marker of epithelial and erythroid cell lineages in early development of the mouse. *Differentiation* 1993; **55**: 19-26
  - 30 **Petersen BE**, Grossbard B, Hatch H, Pi L, Deng J, Scott EW. Mouse A6-positive hepatic oval cells also express several hematopoietic stem cell markers. *Hepatology* 2003; **37**: 632-640
  - 31 **Carlén R**, Davis D, Weiss M, Schultz B, Troyer D. Expression of early transcription factors Oct-4, Sox-2 and Nanog by porcine umbilical cord (PUC) matrix cells. *Reprod Biol Endocrinol* 2006; **4**: 8
  - 32 **Mossman AK**, Sourris K, Ng E, Stanley EG, Elefanty AG. Mixl1 and oct4 proteins are transiently co-expressed in differentiating mouse and human embryonic stem cells. *Stem Cells Dev* 2005; **14**: 656-663
  - 33 **Rathjen J**, Lake JA, Bettess MD, Washington JM, Chapman G, Rathjen PD. Formation of a primitive ectoderm like cell population, EPL cells, from ES cells in response to biologically derived factors. *J Cell Sci* 1999; **112** ( Pt 5): 601-612

S- Editor Tian L L- Editor Logan S E- Editor Zheng XM