

World Journal of *Clinical Cases*

World J Clin Cases 2023 June 26; 11(18): 4210-4457



REVIEW

- 4210 Should gastroenterologists prescribe cannabis? The highs, the lows and the unknowns
Samuel S, Michael M, Tadros M

MINIREVIEWS

- 4231 Application of artificial intelligence in trauma orthopedics: Limitation and prospects
Salimi M, Parry JA, Shahrokhi R, Mosalamiaghili S
- 4241 Weight loss maintenance after bariatric surgery
Cho YH, Lee Y, Choi JI, Lee SR, Lee SY
- 4251 Bicuspid aortic valve with associated aortopathy, significant left ventricular hypertrophy or concomitant hypertrophic cardiomyopathy: A diagnostic and therapeutic challenge
Sopek Merkaš I, Lakušić N, Predrijevac M, Štambuk K, Hrabak Paar M
- 4258 Application experience and research progress of different emerging technologies in plastic surgery
Yang B, Yang L, Huang WL, Zhou QZ, He J, Zhao X

ORIGINAL ARTICLE

Case Control Study

- 4267 Multimodal integrated intervention for children with attention-deficit/hyperactivity disorder
Lv YB, Cheng W, Wang MH, Wang XM, Hu YL, Lv LQ

Retrospective Study

- 4277 Portal vein computed tomography imaging characteristics and their relationship with bleeding risk in patients with liver cirrhosis undergoing interventional therapy
Song XJ, Liu JL, Jia SY, Zhang K

Observational Study

- 4287 Wrist-ankle acupuncture combined with pain nursing for the treatment of urinary calculi with acute pain
Wu LM, Liu Q, Yin XH, Yang LP, Yuan J, Zhang XQ, Wang YL

CASE REPORT

- 4295 Coexistence of diffuse large B-cell lymphoma, acute myeloid leukemia, and untreated lymphoplasmacytic lymphoma/waldenström macroglobulinemia in a same patient: A case report
Zhang LB, Zhang L, Xin HL, Wang Y, Bao HY, Meng QQ, Jiang SY, Han X, Chen WR, Wang JN, Shi XF
- 4306 Collagen fleece (Tachosil®) for treating testis torsion: A case report
Kim KM, Kim JH

- 4313** Morphological features and endovascular repair for type B multichanneled aortic dissection: A case report
Lu WF, Chen G, Wang LX
- 4318** Hepatic inflammatory myofibroblastic tumor: A case report
Tong M, Zhang BC, Jia FY, Wang J, Liu JH
- 4326** Endometriosis of the lung: A case report and review of literature
Yao J, Zheng H, Nie H, Li CF, Zhang W, Wang JJ
- 4334** Delayed dislocation of the radial head associated with malunion of distal radial fracture: A case report
Kim KB, Wang SI
- 4341** Synchronous endometrial and ovarian cancer: A case report
Žilovič D, Čiurlienė R, Šidlovská E, Vaicekauskaitė I, Sabaliauskaitė R, Jarmalaitė S
- 4350** Nivolumab-induced tumour-like gastritis: A case report
Cijauskaite E, Kazenaite E, Strainiene S, Sadauskaite G, Kurlinkus B
- 4360** Solitary thyroid gland metastasis from rectal cancer: A case report and review of the literature
Chen Y, Kang QS, Zheng Y, Li FB
- 4368** Anesthesia for extracorporeal membrane oxygenation-assisted thoracoscopic lower lobe subsegmental resection in a patient with a single left lung: A case report
Wang XF, Li ZY, Chen L, Chen LX, Xie F, Luo HQ
- 4377** Indium chloride bone marrow scintigraphy for hepatic myelolipoma: A case report
Sato A, Saito K, Abe K, Sugimoto K, Nagao T, Sukeda A, Yunaiyama D
- 4384** Fibromatosis-like metaplastic carcinoma of the breast: Two case reports
Bao WY, Zhou JH, Luo Y, Lu Y
- 4392** Perforating and ophthalmic artery variants from the anterior cerebral artery: Two case reports
Mo ZX, Li W, Wang DF
- 4397** Diagnostic use of superb microvascular imaging in evaluating septic arthritis of the manubriosternal joint: A case report
Seskute G, Kausaite D, Chalkovskaja A, Bulotaite E, Butrimiene I
- 4406** Primary prostate Burkitt's lymphoma resected with holmium laser enucleation of the prostate: A rare case report
Wu YF, Li X, Ma J, Ma DY, Zeng XM, Yu QW, Chen WG
- 4412** Pancreatitis, panniculitis and polyarthritides syndrome: A case report
Pichler H, Stumpner T, Schiller D, Bischofreiter M, Ortmaier R
- 4419** Acute neck tendonitis with dyspnea: A case report
Wu H, Liu W, Mi L, Liu Q

- 4425** Next-generation sequencing technology for the diagnosis of *Pneumocystis* pneumonia in an immunocompetent female: A case report
Huang JJ, Zhang SS, Liu ML, Yang EY, Pan Y, Wu J
- 4433** Superior laryngeal nerve block for treatment of throat pain and cough following laryngeal herpes zoster: A case report
Oh J, Park Y, Choi J, Jeon Y
- 4438** Removal of unexpected schwannoma with superficial parotidectomy using modified-Blair incision and superficial musculoaponeurotic system folding: A case report
Nam HJ, Choi HJ, Byeon JY, Wee SY
- 4446** Simultaneously metastatic cholangiocarcinoma and small intestine cancer from breast cancer misdiagnosed as primary cholangiocarcinoma: A case report
Jiao X, Zhai MM, Xing FZ, Wang XL

LETTER TO THE EDITOR

- 4454** Erroneous presentation of respiratory-hemodynamic disturbances and postsurgical inflammatory responses in patients having undergone abdominal cavity cancer surgery
Idrissov KS, Mynbaev OA

ABOUT COVER

Editorial Board Member of *World Journal of Clinical Cases*, Guoping Zheng, MD, PhD, Associate Professor, Faculty of Medicine and Health, Sydney Medical School-Westmead Clinical School, The University of Sydney, Sydney 2145, Australia. guoping.zheng@sydney.edu.au

AIMS AND SCOPE

The primary aim of *World Journal of Clinical Cases* (WJCC, *World J Clin Cases*) is to provide scholars and readers from various fields of clinical medicine with a platform to publish high-quality clinical research articles and communicate their research findings online.

WJCC mainly publishes articles reporting research results and findings obtained in the field of clinical medicine and covering a wide range of topics, including case control studies, retrospective cohort studies, retrospective studies, clinical trials studies, observational studies, prospective studies, randomized controlled trials, randomized clinical trials, systematic reviews, meta-analysis, and case reports.

INDEXING/ABSTRACTING

The WJCC is now abstracted and indexed in Science Citation Index Expanded (SCIE, also known as SciSearch®), Journal Citation Reports/Science Edition, Current Contents®/Clinical Medicine, PubMed, PubMed Central, Reference Citation Analysis, China National Knowledge Infrastructure, China Science and Technology Journal Database, and Superstar Journals Database. The 2022 Edition of Journal Citation Reports® cites the 2021 impact factor (IF) for WJCC as 1.534; IF without journal self cites: 1.491; 5-year IF: 1.599; Journal Citation Indicator: 0.28; Ranking: 135 among 172 journals in medicine, general and internal; and Quartile category: Q4.

RESPONSIBLE EDITORS FOR THIS ISSUE

Production Editor: *Ying-Yi Yuan*; Production Department Director: *Xu Guo*; Editorial Office Director: *Jin-Lei Wang*.

NAME OF JOURNAL

World Journal of Clinical Cases

ISSN

ISSN 2307-8960 (online)

LAUNCH DATE

April 16, 2013

FREQUENCY

Thrice Monthly

EDITORS-IN-CHIEF

Bao-Gan Peng, Jerzy Tadeusz Chudek, George Kontogeorgos, Maurizio Serati, Ja Hyeon Ku

EDITORIAL BOARD MEMBERS

<https://www.wjgnet.com/2307-8960/editorialboard.htm>

PUBLICATION DATE

June 26, 2023

COPYRIGHT

© 2023 Baishideng Publishing Group Inc

INSTRUCTIONS TO AUTHORS

<https://www.wjgnet.com/bpg/gerinfo/204>

GUIDELINES FOR ETHICS DOCUMENTS

<https://www.wjgnet.com/bpg/GerInfo/287>

GUIDELINES FOR NON-NATIVE SPEAKERS OF ENGLISH

<https://www.wjgnet.com/bpg/gerinfo/240>

PUBLICATION ETHICS

<https://www.wjgnet.com/bpg/GerInfo/288>

PUBLICATION MISCONDUCT

<https://www.wjgnet.com/bpg/gerinfo/208>

ARTICLE PROCESSING CHARGE

<https://www.wjgnet.com/bpg/gerinfo/242>

STEPS FOR SUBMITTING MANUSCRIPTS

<https://www.wjgnet.com/bpg/GerInfo/239>

ONLINE SUBMISSION

<https://www.f6publishing.com>



Morphological features and endovascular repair for type B multichanneled aortic dissection: A case report

Wei-Feng Lu, Gang Chen, Li-Xin Wang

Specialty type: Medicine, research and experimental

Provenance and peer review: Unsolicited article; Externally peer reviewed.

Peer-review model: Single blind

Peer-review report's scientific quality classification

Grade A (Excellent): 0
Grade B (Very good): B
Grade C (Good): C
Grade D (Fair): 0
Grade E (Poor): 0

P-Reviewer: Schoenhagen P, United States; Shuhaiber JH, United States

Received: February 11, 2023

Peer-review started: February 11, 2023

First decision: March 24, 2023

Revised: April 3, 2023

Accepted: May 16, 2023

Article in press: May 16, 2023

Published online: June 26, 2023



Wei-Feng Lu, Gang Chen, Li-Xin Wang, Department of Vascular Surgery, Zhongshan Hospital (Xiamen), Fudan University, Xiamen 361015, Fujian Province, China

Corresponding author: Li-Xin Wang, MD, PhD, Doctor, Professor, Surgeon, Department of Vascular Surgery, Zhongshan Hospital (Xiamen), Fudan University, No. 668 Jinhu Road, Huli District, Xiamen 361015, Fujian Province, China. wang.lixin@zs-hospital.sh.cn

Abstract

BACKGROUND

Among the various types of aortic dissection, multichanneled aortic dissection (MCAD) differs from classic double-channeled aortic dissection and involves the formation of an additional false lumen in the aortic wall or the flaps. It is considered a relatively rare condition with high perioperative mortality and morbidity. However, the morphological characteristic and the optimal therapeutic strategy for MCAD has not been fully determined.

CASE SUMMARY

A 64-year-old man presented to our hospital with severe epigastric abdominal pain radiating to the back that was associated with nausea without emesis. A computed tomography angiogram was performed that revealed a type B aortic dissection with multiple channels extending from the level of the left subclavian artery to the bilateral femoral arteries. We used a medical three-dimensional modeling (3D) modeling system to identify the location and extension of multiple lumens from different angles. It also precisely located the two primary entries leading to the false lumens, which helped us to exclude the two false lumens with one stent-graft.

CONCLUSION

By applying medical 3D modeling system, we discover the fragility of aortic wall and the collapse of true lumen caused by the multiple false lumens are the two morphological features of MCAD.

Key Words: Aortic dissection; Endovascular repair; Three-dimensional modeling; Multichanneled; Case report

©The Author(s) 2023. Published by Baishideng Publishing Group Inc. All rights reserved.

Core Tip: Multichanneled aortic dissection usually causes the formation of more than two false lumens in the aortic wall. We used medical three-dimensional modeling (3D) modeling system preoperatively to help identify the location and extension of multiple lumens from different angles. It also precisely located the two primary entries leading to the false lumens, which helped us to exclude the two false lumens with one stent-graft. The 3D modeling system has a potential new role in clinical assessment and operative project planning for complicated aortic dissection.

Citation: Lu WF, Chen G, Wang LX. Morphological features and endovascular repair for type B multichanneled aortic dissection: A case report. *World J Clin Cases* 2023; 11(18): 4313-4317

URL: <https://www.wjgnet.com/2307-8960/full/v11/i18/4313.htm>

DOI: <https://dx.doi.org/10.12998/wjcc.v11.i18.4313>

INTRODUCTION

Among the various types of aortic dissection, multichanneled aortic dissection (MCAD) differs from classic double-channeled aortic dissection and involves the formation of an additional false lumen in the aortic wall or the flaps. It is considered a relatively rare condition with high perioperative mortality and morbidity[1]. However, the morphological characteristic and the optimal therapeutic strategy for MCAD has not been fully determined.

CASE PRESENTATION

Chief complaints

Severe epigastric abdominal pain radiating to the back for 1 wk.

History of present illness

A 64-year-old man presented to our hospital with severe epigastric abdominal pain radiating to the back that was associated with nausea without emesis for 1 wk.

History of past illness

Hypertension and stroke.

Personal and family history

Hypertension.

Physical examination

A physical examination revealed significant tenderness in the abdomen and a palpable pulse throughout his distal extremities.

Laboratory examinations

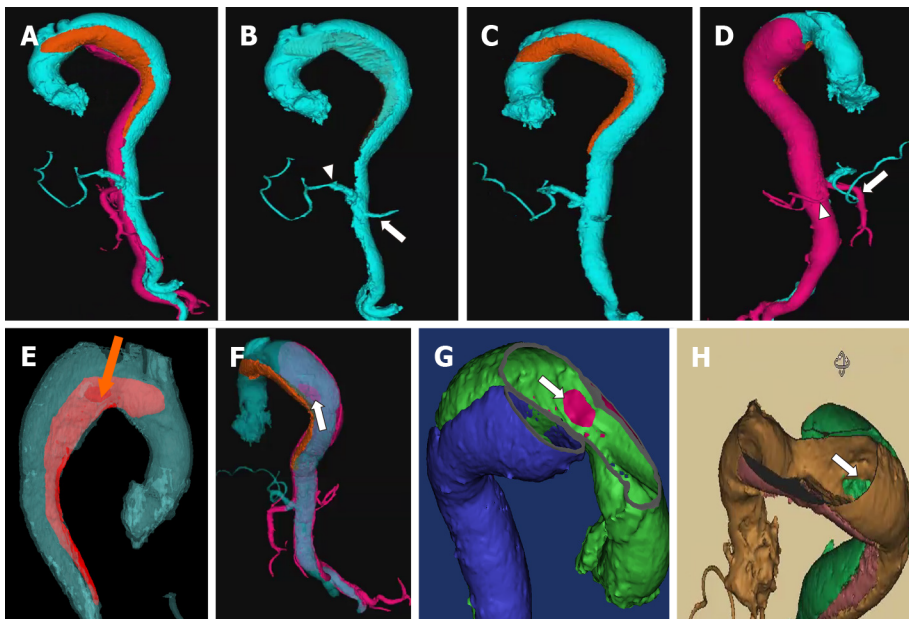
Normal.

Imaging examinations

A computed tomography (CT) angiogram was performed that revealed a type B aortic dissection with multiple channels extending from the level of the left subclavian artery to the bilateral femoral arteries. To identify the specific location of entry tears and the origin of abdominal branches, we used a medical three-dimensional (3D) modeling system to reconstruct and create an omnidirectional image by analyzing and integrating CT angiographic images. It confirmed a typical three-channeled aortic dissection, and the location of the primary entry tears of two different false lumens could be clearly recognized. The superior mesentery artery and the right renal artery originated from one of the false lumens (Figure 1 and Video), which suggested the complexity and potential risk of organ malperfusion of the MCAD.

FINAL DIAGNOSIS

Type B aortic dissection.



DOI: 10.12998/wjcc.v11.i18.4313 Copyright ©The Author(s) 2023.

Figure 1 Image of medical 3D printing and modeling system for operative project planning. A: Three channels with different colors were clearly shown in this case by a 3D modeling image; B: The true lumen depicted in blue color was collapsed with the celiac artery (white arrowhead) and the left renal artery (white arrow) originated from it; C: One of the false lumen (in orange) started from the less curvature of the aortic arch, whose entry tear was at the front wall of the aorta; D: The other false lumen (in pink) started from the greater curvature of the distal aortic arch and extended to the right common iliac artery, involving the superior mesentery artery (white arrow) and the right renal artery (white arrowhead). The second entry (to pink false lumen) was located at the back wall of the aorta; E: The entry tear of false lumen (in red) started from the less curvature of the aortic arch could be clearly recognized at the front wall of the aorta from outside (orange arrow); F: The second entry of the false lumen (in pink) started from the greater curvature of the distal aortic arch was located at the back wall of the aorta, as seen from the outside (white arrow); G: The entry tear of false lumen (in blue) started from the less curvature of the aortic arch could be clearly recognized within the true lumen (white arrow); H: The second entry of the false lumen (in green) started from the greater curvature of the distal aortic arch was located at the back wall of the aorta, as seen within the true lumen (white arrow).

TREATMENT

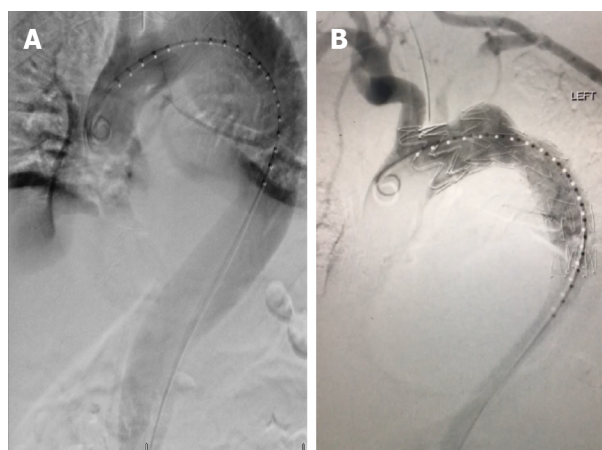
Because this patient was resistant to open chest and abdominal surgery, we performed thoracic endovascular aortic repair (TEVAR) with a debranching technique. We made a longitudinal incision on both sides of the neck to expose the left and right common carotid artery, then the end-to-side anastomosis was made from the artificial graft to the left common carotid artery. After the graft was tunneled from the left side to the right side, the end-to-side anastomosis was performed on the right common carotid artery. Then we made a left carotid to left subclavian artery bypass. After successful anastomosis, the left common carotid artery was ligated and TEVAR was performed with the help of an intravascular ultrasound to guide the wire through the true lumen from the right femoral artery to the aortic arch. Then the stent-graft (Zenith Alpha Thoracic Endograft, Cook Medical, Bloomington, IN) was precisely deployed within the aortic arch just adjacent to the innominate artery distally. The complete angiograph showed that the primary entries of both two false lumens were sealed without type I endoleaks (Figure 2), and the true lumen was enlarged with good blood flow perfusion to visceral organs.

OUTCOME AND FOLLOW-UP

After the operation, the patient had a thoracic duct injury with increased drainage from the incision, which was managed with percutaneous coil embolization. He was discharged one week later after a successful recovery.

DISCUSSION

MCAD was first reported in 1978 by McReynolds *et al*[1]. The incidence of MCAD ranges from 4.9% to 9% with higher observed rates in patients with Marfan syndrome[2-4]. Due to the difference and complexity of its flow patterns and hemodynamics, conventional CT imaging has difficulty in clearly depicting the morphological configuration of MCAD. An important morphological feature of MCAD, as



DOI: 10.12998/wjcc.v11.i18.4313 Copyright ©The Author(s) 2023.

Figure 2 Angiographic findings during the procedure. A: Preoperative angiogram showed huge aneurysm caused by three-channelled aortic dissection; B: After stent graft deployment, the primary entries of both two false lumens were sealed without type I endoleaks as shown on the complete angiogram.

shown in our case by the medical 3D modeling system, is a relatively greater risk of collapse of true lumen compressed by the false lumens on both sides. This morphology may often cause a potential risk of organ malperfusion. Another important feature is the fragility of the aortic wall when the second false lumen develops laterally on the wall of the first false lumen in the acute dissection. The false lumens usually have no re-entry formation which increases the pressure in the false lumens and causes rupture[3].

Due to its hemodynamic instability and potential risk of organ malperfusion, early surgical or endovascular intervention such as TEVAR is recommended[3]. However, the relevant literature is limited. Generally, for debranching technique, if the aortic dissection involves the innominate artery, graft from the ascending aorta to the neck vessels is performed. In our case, the innominate artery was not involved by the aortic dissection, so we performed the right common carotid - left common carotid artery bypass and left carotid to left subclavian artery bypass before TEVAR procedure. During the TEVAR procedure of MCAD, it is challenging to identify the configuration of multiple lumens and their relationship with aortic branches. Preoperative evaluation is crucial to the success of TEVAR. In our case, a medical 3D modeling system was used preoperatively to help identify the location and extension of multiple lumens from different angles. It also precisely located the two primary entries leading to the false lumens, which helped us to exclude the two false lumens with one stent-graft. Additionally, an intravascular ultrasound was also used to guide the wire and assure the precise deployment of the stent graft within the true lumen. Our results showed that the MCAD with complex configuration could be managed with endovascular repair with the help of 3D modeling system and intravascular ultrasound.

CONCLUSION

The fragility of the aortic wall and the collapse of the true lumen caused by the multiple false lumens are the two morphological features of MCAD. Notably a 3D modeling system has a potential new role in clinical assessment and operative project planning for complicated aortic dissection such as MCAD. More in-depth studies are required.

FOOTNOTES

Author contributions: Lu WF and Chen G contributed equally to this work; Lu WF and Wang LX designed the research study; Lu WF, Wang LX and Chen G performed the research; Lu WF, Wang LX and Chen G analyzed the data and wrote the manuscript; All authors have read and approve the final manuscript.

Informed consent statement: The study participant provided informed written consent prior to study enrollment.

Conflict-of-interest statement: All the authors report no relevant conflicts of interest for this article.

CARE Checklist (2016) statement: The authors have read CARE Checklist (2016), and the manuscript was prepared and revised according to CARE Checklist (2016).

Open-Access: This article is an open-access article that was selected by an in-house editor and fully peer-reviewed by

external reviewers. It is distributed in accordance with the Creative Commons Attribution NonCommercial (CC BY-NC 4.0) license, which permits others to distribute, remix, adapt, build upon this work non-commercially, and license their derivative works on different terms, provided the original work is properly cited and the use is non-commercial. See: <https://creativecommons.org/licenses/by-nc/4.0/>

Country/Territory of origin: China

ORCID number: Wei-Feng Lu 0000-0003-4156-5094; Gang Chen 0000-0003-4748-5060; Li-Xin Wang 0000-0002-1379-3906.

S-Editor: Li L

L-Editor: A

P-Editor: Li L

REFERENCES

- 1 **McReynolds RA**, Shin MS, Sims RD. Three-channeled aortic dissection. *AJR Am J Roentgenol* 1978; **130**: 549-552 [PMID: 415567 DOI: 10.2214/ajr.130.3.549]
- 2 **Sueyoshi E**, Nagayama H, Hayashida T, Sakamoto I, Uetani M. Comparison of outcome in aortic dissection with single false lumen vs multiple false lumens: CT assessment. *Radiology* 2013; **267**: 368-375 [PMID: 23297333 DOI: 10.1148/radiol.12121274]
- 3 **Ando M**, Okita Y, Tagusari O, Kitamura S, Matsuo H. Surgery in three-channeled aortic dissection. A 31-patient review. *Jpn J Thorac Cardiovasc Surg* 2000; **48**: 339-343 [PMID: 10935323 DOI: 10.1007/BF03218153]
- 4 **Guo B**, Hou K, Guo D, Xu X, Shi Z, Shan Y, Lv P, Fu W. Outcomes of thoracic endovascular repair for type B aortic dissection with multichanneled morphology. *J Vasc Surg* 2017; **66**: 1007-1017 [PMID: 28390772 DOI: 10.1016/j.jvs.2016.12.145]



Published by **Baishideng Publishing Group Inc**
7041 Koll Center Parkway, Suite 160, Pleasanton, CA 94566, USA

Telephone: +1-925-3991568

E-mail: bpgoffice@wjgnet.com

Help Desk: <https://www.f6publishing.com/helpdesk>

<https://www.wjgnet.com>

