

# World Journal of *Gastroenterology*

*World J Gastroenterol* 2020 June 21; 26(23): 3118-3317



**OPINION REVIEW**

- 3118** Liver-directed therapies for liver metastases from neuroendocrine neoplasms: Can laser ablation play any role?  
*Sartori S, Bianchi L, Di Vece F, Tombesi P*

**REVIEW**

- 3126** Review of primary sclerosing cholangitis with increased IgG4 levels  
*Manganis CD, Chapman RW, Culver EL*
- 3145** Early exposure to food contaminants reshapes maturation of the human brain-gut-microbiota axis  
*Sarron E, Pérot M, Barbezier N, Delayre-Orthez C, Gay-Quéheillard J, Anton PM*
- 3170** Potential of the ellagic acid-derived gut microbiota metabolite – Urolithin A in gastrointestinal protection  
*Kujawska M, Jodynis-Liebert J*
- 3182** Neuromechanism of acupuncture regulating gastrointestinal motility  
*Yu Z*

**MINIREVIEWS**

- 3201** Endosonographic diagnosis of advanced neoplasia in intraductal papillary mucinous neoplasms  
*Eiterman A, Lahooti A, Krishna SG*
- 3213** Endoscopic ultrasound-guided injective ablative treatment of pancreatic cystic neoplasms  
*Du C, Chai NL, Linghu EQ, Li HK, Feng XX*

**ORIGINAL ARTICLE****Basic Study**

- 3225** Sodium glucose co-transporter 2 inhibition reduces succinate levels in diabetic mice  
*Herat LY, Ward NC, Magno AL, Rakoczy EP, Kiuchi MG, Schlaich MP, Matthews VB*
- 3236** Neoadjuvant chemoradiation changes podoplanin expression in esophageal cancer patients  
*Warnecke-Eberz U, Plum P, Schweinsberg V, Drebbler U, Bruns CJ, Müller DT, Hölscher AH, Bollschweiler E*

**Retrospective Cohort Study**

- 3249** Medications in type-2 diabetics and their association with liver fibrosis  
*Siddiqui MT, Amin H, Garg R, Chadavalada P, Al-Yaman W, Lopez R, Singh A*

- 3260** Pancreatic necrosis and severity are independent risk factors for pancreatic endocrine insufficiency after acute pancreatitis: A long-term follow-up study  
*Yu BJ, Li NS, He WH, He C, Wan JH, Zhu Y, Lu NH*

#### Clinical Trials Study

- 3271** Rapid rehabilitation technique with integrated traditional Chinese and Western medicine promotes postoperative gastrointestinal function recovery  
*Cao LX, Chen ZQ, Jiang Z, Chen QC, Fan XH, Xia SJ, Lin JX, Gan HC, Wang T, Huang YX*

#### Observational Study

- 3283** Impact of a national basic skills in colonoscopy course on trainee performance: An interrupted time series analysis  
*Siau K, Hodson J, Anderson JT, Valori R, Smith G, Hagan P, Iacucci M, Dunckley P*
- 3293** Consensus on the definition of colorectal anastomotic leakage: A modified Delphi study  
*van Hulsdingen CP, Jongen AC, de Jonge WJ, Bouvy ND, Derikx JP*

#### META-ANALYSIS

- 3304** Value of intravoxel incoherent motion in detecting and staging liver fibrosis: A meta-analysis  
*Ye Z, Wei Y, Chen J, Yao S, Song B*

**ABOUT COVER**

Editorial Board Member of *World Journal of Gastroenterology*, Simon Bramhall, FRCS (Gen Surg), MD, Attending Doctor, Surgeon, Consultant Upper GI/HPB Surgeon, The County Hospital, Union Walk, Hereford HR1 2ER, United Kingdom

**AIMS AND SCOPE**

The primary aim of *World Journal of Gastroenterology* (WJG, *World J Gastroenterol*) is to provide scholars and readers from various fields of gastroenterology and hepatology with a platform to publish high-quality basic and clinical research articles and communicate their research findings online.

WJG mainly publishes articles reporting research results and findings obtained in the field of gastroenterology and hepatology and covering a wide range of topics including gastroenterology, hepatology, gastrointestinal endoscopy, gastrointestinal surgery, gastrointestinal oncology, and pediatric gastroenterology.

**INDEXING/ABSTRACTING**

The WJG is now indexed in Current Contents®/Clinical Medicine, Science Citation Index Expanded (also known as SciSearch®), Journal Citation Reports®, Index Medicus, MEDLINE, PubMed, PubMed Central, and Scopus. The 2019 edition of Journal Citation Report® cites the 2018 impact factor for WJG as 3.411 (5-year impact factor: 3.579), ranking WJG as 35<sup>th</sup> among 84 journals in gastroenterology and hepatology (quartile in category Q2). CiteScore (2018): 3.43.

**RESPONSIBLE EDITORS FOR THIS ISSUE**

Responsible Electronic Editor: *Yu-Jie Ma*  
Proofing Production Department Director: *Xiang Li*  
Responsible Editorial Office Director: *Ze-Mao Gong*

**NAME OF JOURNAL**

*World Journal of Gastroenterology*

**ISSN**

ISSN 1007-9327 (print) ISSN 2219-2840 (online)

**LAUNCH DATE**

October 1, 1995

**FREQUENCY**

Weekly

**EDITORS-IN-CHIEF**

Subrata Ghosh, Andrzej S Tarnawski

**EDITORIAL BOARD MEMBERS**

<http://www.wjgnet.com/1007-9327/editorialboard.htm>

**PUBLICATION DATE**

June 21, 2020

**COPYRIGHT**

© 2020 Baishideng Publishing Group Inc

**INSTRUCTIONS TO AUTHORS**

<https://www.wjgnet.com/bpg/gerinfo/204>

**GUIDELINES FOR ETHICS DOCUMENTS**

<https://www.wjgnet.com/bpg/GerInfo/287>

**GUIDELINES FOR NON-NATIVE SPEAKERS OF ENGLISH**

<https://www.wjgnet.com/bpg/gerinfo/240>

**PUBLICATION ETHICS**

<https://www.wjgnet.com/bpg/GerInfo/288>

**PUBLICATION MISCONDUCT**

<https://www.wjgnet.com/bpg/gerinfo/208>

**ARTICLE PROCESSING CHARGE**

<https://www.wjgnet.com/bpg/gerinfo/242>

**STEPS FOR SUBMITTING MANUSCRIPTS**

<https://www.wjgnet.com/bpg/GerInfo/239>

**ONLINE SUBMISSION**

<https://www.f6publishing.com>



## Neuromechanism of acupuncture regulating gastrointestinal motility

Zhi Yu

**ORCID number:** Zhi Yu  
(0000000291792618).

**Author contributions:** Yu Z wrote and revised the manuscript.

**Supported by** National Natural Science Foundation of China, No. 81574071, No. 81673883, and No. 81873238; and Leading Talents of Traditional Chinese Medicine in Jiangsu Province (Second Batch), No. SLJ0225.

**Conflict-of-interest statement:** The author declares no conflict of interest.

**Open-Access:** This article is an open-access article that was selected by an in-house editor and fully peer-reviewed by external reviewers. It is distributed in accordance with the Creative Commons Attribution NonCommercial (CC BY-NC 4.0) license, which permits others to distribute, remix, adapt, build upon this work non-commercially, and license their derivative works on different terms, provided the original work is properly cited and the use is non-commercial. See: <http://creativecommons.org/licenses/by-nc/4.0/>

**Manuscript source:** Invited manuscript

**Received:** December 30, 2019

**Peer-review started:** December 30, 2019

**First decision:** January 16, 2020

**Revised:** April 1, 2020

**Accepted:** May 23, 2020

**Article in press:** May 23, 2020

**Published online:** June 21, 2020

**P-Reviewer:** Adams JD, Inchauspe AA

**Zhi Yu**, Key Laboratory of Acupuncture and Medicine Research of Ministry of Education, Nanjing University of Chinese Medicine, Nanjing 210023, Jiangsu Province, China

**Corresponding author:** Zhi Yu, PhD, Lecturer, Key Laboratory of Acupuncture and Medicine Research of Ministry of Education, Nanjing University of Chinese Medicine, No. 138 Xianlin Road, Nanjing 210023, Jiangsu Province, China. [yuzhi@njucm.edu.cn](mailto:yuzhi@njucm.edu.cn)

### Abstract

Acupuncture has been used in China for thousands of years and has become more widely accepted by doctors and patients around the world. A large number of clinical studies and animal experiments have confirmed that acupuncture has a benign adjustment effect on gastrointestinal (GI) movement; however, the mechanism of this effect is unclear, especially in terms of neural mechanisms, and there are still many areas that require further exploration. This article reviews the recent data on the neural mechanism of acupuncture on GI movements. We summarize the neural mechanism of acupuncture on GI movement from four aspects: acupuncture signal transmission, the sympathetic and parasympathetic nervous system, the enteric nervous system, and the central nervous system.

**Key words:** Acupuncture; Gastrointestinal motility; Neuromechanism; Afferent fibers; Autonomic nervous system; Central nervous system

©The Author(s) 2020. Published by Baishideng Publishing Group Inc. All rights reserved.

**Core tip:** Acupuncture has been applied in the treatment of gastrointestinal (GI) dysmotility diseases worldwide for decades. However, its underlying neuromechanisms in regulating GI motility have not been fully established. The neural regulation of GI function depends on its endogenous and exogenous nervous system. This review discusses the mechanisms of acupuncture on GI motility from various perspectives including the afferent signals, autonomic nervous system, as well as central nervous system based on its physical/pathological neural control.

**Citation:** Yu Z. Neuromechanism of acupuncture regulating gastrointestinal motility. *World J Gastroenterol* 2020; 26(23): 3182-3200

**URL:** <https://www.wjgnet.com/1007-9327/full/v26/i23/3182.htm>

**DOI:** <https://dx.doi.org/10.3748/wjg.v26.i23.3182>

**S-Editor:** Wang JL  
**L-Editor:** Webster JR  
**E-Editor:** Ma YJ



## INTRODUCTION

Acupuncture, as a complementary and alternative medical treatment, is used worldwide due to its advantages in terms of efficacy and safety. A literature analysis summarized the clinical diseases and symptoms that could be treated by acupuncture and moxibustion by collecting and analyzing published randomized controlled studies in the PubMed database. This analysis identified more than one hundred diseases and symptoms that were unanimously considered effectively treated, among which gastrointestinal (GI) diseases accounted for a quarter of the diseases<sup>[1-3]</sup>. GI motility disorder is a common pathological feature in many clinical diseases<sup>[4,5]</sup>, including gastroparesis, irritable bowel syndrome (IBS), functional dyspepsia, pseudo-obstruction, and chronic constipation, causing premature satiety, nausea, vomiting, abdominal pain, bloating, loss of appetite, and other clinical symptoms<sup>[6-10]</sup>. Taking diabetic gastroparesis as an example, as many as 25%–55% of patients with type 1 diabetes have gastroparesis, with a slightly higher incidence rate in patients with type 2 diabetes, causing great suffering and poor quality of life in patients<sup>[11]</sup>. GI motility disorder is becoming a serious public health problem and a significant burden to society; however, current treatment options for gut dysmotility are limited because of serious side effects<sup>[12,13]</sup>.

In previous decades, many studies confirmed the efficacy of acupuncture for functional GI disorders and more recent medical research has made some progress in determining its mechanisms. The nervous system plays a key role in the benign regulation of GI movement in acupuncture. GI motility is the result of the combined effects of the nervous system, humoral factors, and the myoelectric activity of the GI tract itself, in which the nervous system plays a main role. Neural regulation of GI function depends on the following three levels: The local enteric nervous system (ENS) (endogenous regulation), the autonomic nervous system (ANS), and the central nervous system (CNS) (exogenous regulation). The aim of this review is to discuss the possible neuromechanisms of acupuncture in GI motility, based on its afferent signals and the neural regulation of GI motility.

## AFFERENT FIBERS AND RECEPTOR MECHANISM OF ACUPUNCTURE

The effect of acupuncture is based on the somatic afferent signals induced by the insertion of needles into the body manually (manual acupuncture, MA) or electrically (electroacupuncture, EA). Somatic afferent nerve fibers are classified into several types according to their diameter, including A- $\alpha$ , A- $\beta$ , A- $\delta$ , and C-fibers, and it is widely accepted that these fibers underlie the neural mechanism of acupuncture<sup>[14]</sup>. MA stimulation can activate all four groups of somatic afferents and deliver the signal to the CNS, while the type of fibers activated by EA stimulation depends on the intensity<sup>[15]</sup>. Nevertheless, only when the intensity of stimuli is over the threshold of A $\delta$  and/or C-fibers can acupuncture obviously modulate GI motility<sup>[16]</sup>.

A strong mechanical stimulus applied to the abdominal skin induces an inhibitory effect on jejunal motility, and this effect was proven to be produced by excitation of group IV (unmyelinated) cutaneous afferent nerve fibers in the T10 spinal nerve. Similar stimuli applied to the skin of the upper chest, neck, forepaws, or hind paws elicited a facilitative jejunal reflex that was evoked by excitation of mainly group III (A- $\delta$ ) cutaneous afferent nerve fibers<sup>[17]</sup>. Another study indicated that duodenal motility was inhibited by EA at intensities of more than 5.0 mA (suprathreshold of group IV afferent excitation) at acupoints located in the abdominal area, and facilitated by EA at acupoints located in the hind paw with intensities of more than 2.0 mA (subthreshold of group IV, and suprathreshold for groups II + III afferent excitation)<sup>[18]</sup>.

A variety of somatosensory receptors are present in the skin and muscles, including mechanoreceptors, thermoreceptors, and nociceptors. Among them, acid-sensing ion channel 3 (ASIC3) is mainly located in A $\beta$ -fibers innervating the skin and muscle to respond to mechanical stimuli, and transient receptor potential vanilloid-1 (TRPV1) is co-expressed with C-fibers rather than with myelinated nociceptors as a heat and mechanical sensor<sup>[19,20]</sup>. EA at acupoints located in the abdominal area markedly inhibits gastric motility in an intensity-dependent manner, and this inhibitory effect is alleviated by capsaizepine injection (an antagonist of the TRPV1 receptor) or TRPV1 gene knockout with no intensity dependence, indicating that TRPV1 is partially involved in the EA-mediated modulation of gastric motility<sup>[21,22]</sup>. A similar result for EA was observed on jejunal motility<sup>[23]</sup>. In *Asic3* gene deleted mice, the effect of EA at ST36 and CV12 on gastric motility was slightly decreased, with no statistical



significance compared with that in wild-type mice<sup>[24]</sup>. The mean temperature was around 43°C, referring to the thermal activation of Aδ- and C-fibers<sup>[25-27]</sup>. Nociceptive 43°C and 45°C heat stimuli at ST36 and CV12, rather than non-nociceptive 41°C, produced significant regulatory effects on gastric motility, and this effect was also decreased in *Trpv1*<sup>-/-</sup> mice, but not in *Asic3*<sup>-/-</sup> mice<sup>[28,29]</sup>. Results from morphological observations confirmed the role of TRPV1 and ASIC3. Western blotting and immunofluorescence results demonstrated an abundance of TRPV1, TRPV4, and ASIC3 in the anatomical layers of ST36<sup>[30]</sup>. Components of calcium wave propagation (CWP, the proposed downstream sensing pathway) were also co-expressed with TRPV1. However, only TRPV1 is regarded as a responding channel for acupuncture by sensing peripheral information and conducting signaling *via* the CWP and the excitatory phosphorylated glutamate ionotropic receptor NMDA type subunit 1-phosphorylated calcium/calmodulin dependent protein kinase II pathway, offering a comprehensive understanding of the physical stimulation by acupuncture of neurological signaling<sup>[31]</sup>.

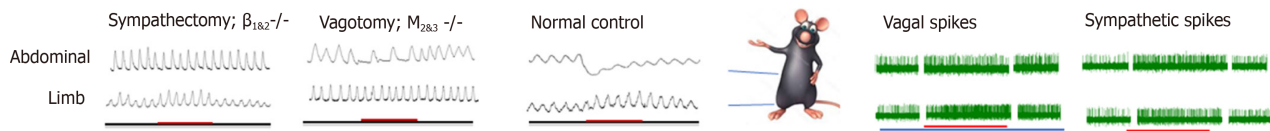
## AUTONOMIC NERVOUS SYSTEM MECHANISM OF ACUPUNCTURE

### *The parasympathetic and sympathetic nervous system*

Neural networks to control GI motility are positioned at three levels: The parasympathetic and sympathetic nervous system (PNS, SNS), the ENS, and the CNS. Although the intestines are capable of functioning in the absence of extrinsic innervation, movements of the upper GI tract are much more dependent on extrinsic neural pathways, and the motility of the small and large intestines are mainly monitored by the ENS<sup>[32,33]</sup>. The PNS and SNS comprise one of the factors affecting extrinsic innervation of GI contractility. The SNS provides a predominantly inhibitory effect on GI motility, and in contrast, the PNS exerts both excitatory and inhibitory control over GI motility.

The role of the somatoautonomic reflex, which was demonstrated by Sato and his colleagues in the 1960s<sup>[34,35]</sup>, is now considered the neurological basis of acupuncture in GI motility modulation<sup>[36,37]</sup>, and this modulation exerts a regional-specific effect<sup>[38,39]</sup> (Figure 1). Stimulating acupoints in the abdominal area inhibits gastric, duodenal, and jejunal motility by increasing sympathetic efferent fiber activity, and stimulating acupoints in the limb, which, in contrast, facilitates the above-mentioned gut motility by exciting vagal efferent fiber activity<sup>[18,40-43]</sup>. The effect of acupuncture on GI motility could be attenuated by vagotomy or sympathectomy<sup>[16,44-46]</sup>. The  $\beta_1$  and  $\beta_2$  receptors are expressed in the GI tract and serve as the predominant subtypes in the inhibitory effects of the SNS on GI motility<sup>[47,48]</sup>, while the M2 and M3 receptors serve as the predominant subtypes in the excitatory effects of the PNS on GI motility<sup>[49,50]</sup>. The effect of acupuncture on GI motility could also be reduced by the corresponding antagonist<sup>[51-54]</sup> and deletion of the gene encoding the  $\beta_{1\&2}$  receptor or M<sub>2&3</sub> receptor<sup>[55-57]</sup>. In addition to the excitement effect, lower extremity acupoints also suggest an inhibitory effect on GI movement, and the inhibitory rate of ST37/LI11 on gastric movement fluctuates between 6.67%–1.33%<sup>[58,59]</sup>. Moreover, the effect of ST36 on gastric movement is reversed to inhibition after gene knockout of M2 and M3 receptor subtypes<sup>[45]</sup>, suggesting the involvement of other receptors. This might be caused by activation of the other vagus pathway, the inhibitory non-adrenergic, noncholinergic (NANC) pathway, whose transmitter is nitric oxide (NO) or vasoactive intestinal polypeptide (VIP), to cause smooth muscle relaxation<sup>[60]</sup>. Zhu and his team explained this type of region-specific effect using the spinal segmental innervation theory<sup>[46]</sup>. Stimulation at homotopic acupoints (with the same spinal segment from the innervated visceral organs) decreases GI pressure *via* the sympathetic pathways, while stimulation at heterotopic acupoints (with different spinal segments from the innervated visceral organs) facilitates GI motility *via* the parasympathetic pathways<sup>[41,56]</sup>. This effect applied not only to normal conditions, but also to rats with diarrhea and constipation. It should be noted that this region-specific effect seems to apply only to the regulation of GI movements. When it comes to the effects of acupuncture on modulating the cardiovascular system, stimulations of the limbs, chest, and abdomen all produce a similar effect in terms of heart rate and blood pressure, yet whether the effect is excited or suppressed depends on the intensity of the stimulus (or what type of fiber is activated) and the tissue structure (skin or muscle)<sup>[61-64]</sup>.

The response time of acupoints at different sites might be another feature of the regional specificity of the somatoautonomic reflex; however, this feature is rarely noticed. According to a previous study<sup>[65]</sup>, the abdominal acupoints for gastric motility



**Figure 1** Regional-specific effect of acupuncture on gastrointestinal motility and its autonomic nervous system mechanism. Stimulating the abdominal acupoints inhibits gastric/duodenal/jejunal motility by increasing sympathetic efferent fiber activity; and stimulating acupoints in the limb facilitates motility by exciting vagal efferent fiber activity. The effect of abdominal acupoints on gastrointestinal motility could be attenuated by sympathectomy or deletion of the gene encoding the  $\beta_{1\&2}$  receptor. The effect of limbic acupoints on gastrointestinal motility could be attenuated by vagotomy or  $M_{2\&3}$  receptor gene knock out.

could be effective within 30 s with a shorter response time, while the acupoint of the hindlimb was effective after 30 s with a longer response time. ST36 showed an excitatory effect in a fast onset manner in sympathectomy rats and  $\beta_{1\&2}$  knockout mice, suggesting that sympathetic inhibition might be one of the key factors for the delayed onset of ST36 and  $\beta_1$  and  $\beta_2$  receptors may underlie its receptor mechanisms<sup>[44,45]</sup>. Undoubtedly, the sympathetic pathway is activated by acupoints in the lower limbs; evidence shows that EA at ST36/ST37 increased sympathetic activity in healthy volunteers using a heart rate variability analysis or microneurography evaluation of the left peroneal nerve<sup>[66,67]</sup>. This mechanism is fully elucidated in terms of the cardiovascular system and anti-inflammatory effects<sup>[68,69]</sup>; however, it is rarely mentioned in the regulation of GI function. Therefore, the role of sympathetic nerve pathways in regulating GI function by limbic acupoints is greatly underestimated and further evidence is required.

When it comes to colonic motility, the situation is a bit more complicated, because the effects of acupoints located in different areas on the proximal and distal colon are inconsistent. Acupuncture at the acupoints of the forelimb (LI1–LI6 and LI11), abdomen (ST25), and back (BL25) had no significant effects on the proximal colonic motility; and acupoints of the hind paw (ST37) increased proximal colonic pressure<sup>[70–72]</sup>. Stimulation of the limbs (LI11, ST37, and ST36), abdomen (ST25), and back (ST37) all produced an augmented effect on distal colonic motility regardless of normal, constipated, or diarrheic state<sup>[73]</sup>. The mechanism underlies the cholinergic pathway<sup>[74]</sup>. Apart from the segmental innervation theory, the regional neuro-feature between the proximal and distal colon might offer a partial explanation. Vagal innervation to the colon varies among species. In humans, the vagal efferent to the large intestine ends at the splenic flexure, and the remaining part receives parasympathetic input from the pelvic nerves<sup>[75–77]</sup>. However, studies in rodents suggest that the efferent fibers of the vagus distribute throughout the entire colon<sup>[78,79]</sup>, which is supported by evidence from a retrograde neuronal tracing study<sup>[80]</sup>. Moreover, the distal colon is innervated *via* dual parasympathetic nerves, because the pelvic nerve projects from the rectum through the mid colon. In addition, there are regional differences in the innervation of the vagus nerve between the proximal and distal colon<sup>[81–84]</sup>, *i.e.*, the fiber density and distribution of neurotransmitters, such as acetylcholine, within the ganglions is different from each other. It is possible that the regional difference underlies the inconsistency of EA in regulating the motility of the proximal and distal colons. Besides, the regional complexity in the enteric neuron<sup>[85]</sup> and pelvic ganglion (contain both postganglionic sympathetic and parasympathetic neurons) innervated colon might also add to the complexity of acupuncture-mediated modulation of GI motility<sup>[86–88]</sup>.

## ENS MECHANISM OF ACUPUNCTURE

In contrast to the innervation of other peripheral organs, the GI tract has an extensive intrinsic nervous system (the ENS), which modulates its functions, including motility, secretion, blood flow, immunity, and maintenance of the integrity of the epithelial barrier. The major components of the ENS are myenteric plexuses and submucosal plexuses, which contain numerous enteric neurons and glial cells. The myenteric plexuses distribute from the upper esophagus to the internal anal sphincter, forming a continuous network to control GI motility. The submucosal plexuses are closer, allowing them to sense the lumen environment and regulate GI blood flow, as well as controlling epithelial cell functions and secretion<sup>[89]</sup>. Basically, enteric neurons can be classified into three types according to their function: Motor neurons (including inhibitory neurons and excitatory neurons), sensory neurons, and interneurons. Different neurons in the ENS neural network regulate GI movement by releasing different transmitters. These transmitters include excitatory transmitters, like



acetylcholine, opioid peptides, and 5-HT; and inhibitory transmitters such as VIP and NO.

### **Enteric motor neurons**

The importance of the ENS in the neuropathy of GI dysmotility is highlighted by a wide range of diseases that are grouped as congenital, acquired (such as slow transit constipation), and secondary disorders (such as diabetic gastroparesis)<sup>[32]</sup>. Wedel *et al*<sup>[90]</sup> found that the number of nerve cells decreased significantly within the myenteric plexus and external submucous plexus in patients with idiopathic slow-transit constipation by observing the neuronal marker Protein Gene Product 9.5 (PGP9.5), confirming the role of ENS in GI motility. PGP9.5-positive cells were also markedly decreased in the jejunum, ileum, and proximal colon myenteric plexus of mice with constipation<sup>[91]</sup>. EA has shown a benign regulatory effect in STC; however, much less is known about its mechanism with reference to the ENS, and a series of studies suggested that EA could restore GI motility by controlling excitatory and inhibitory neurons. ST37, an acupoint in the limb, improved the carbon propulsion rates and defecation time and increased the total PGP9.5 expression in the jejunum, ileum, and proximal colonic myenteric plexus<sup>[92]</sup>. Further results indicated the restoration of enteric neuron function by downregulating the level of nitric oxide synthase (nNOS, secreted by inhibitory neurons to induce relaxation) and upregulating the expression of choline acetyltransferase (ChAT, secreted by excitatory neurons to induce contraction). While ST25, located in the abdomen, could only downregulate the expression of nNOS; therefore, the regulatory effect of EA on enteric neurons seems to act in a region-specific manner<sup>[72]</sup> (Figure 2).

Loss of enteric neurons is one the most important neuropathies that contribute to GI dysmotility in diabetic rats, and this change may be mediated, in part, *via* a reduction of glial cell derived neurotrophic factor (GDNF) and its main downstream signaling pathway phosphatidylinositol-4,5-bisphosphate 3-kinase (PI3K)-protein kinase B (AKT), which is a survival signal for enteric neurons<sup>[93,94]</sup>. Decreases in PGP9.5, nNOS, and ChAT neurons in the colon of diabetic rats led to disordered gastric emptying and intestinal transit<sup>[95,96]</sup>. After long-term intervention, EA at ST36 induced regeneration of lost enteric neurons<sup>[97]</sup>. Meanwhile, the mRNA and protein level of GDNF, an important neurotrophic factor of enteric neurons, and p-AKT in the colon were upregulated, suggesting the role of GDNF and the PI3K-AKT signal pathway in the mechanism of EA-induced regeneration of impaired enteric neurons.

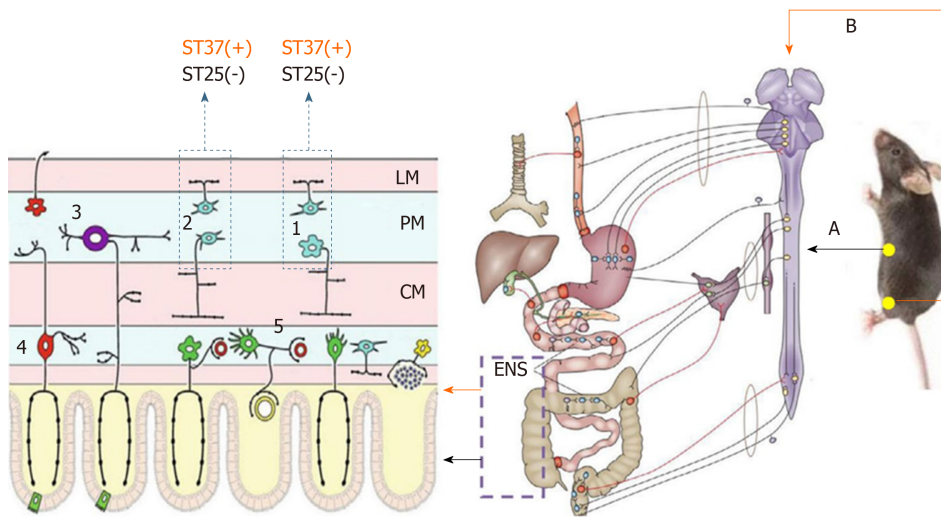
### **Enteric sensory neurons**

Purinergic P2X receptors contribute to neurotransmission in subsets of enteric neurons of the GI tract and P2X3 receptor immunoreactivity was found in the myenteric neurons of the esophagus, stomach, and small and large intestines of rodents, of which the major types of neurons are excitatory, inhibitory muscle motor neurons, and interneurons<sup>[98,99]</sup>. However, the evidence for P2X3 receptor involvement in GI motility is limited. Studies have reported that P2X3 gene knockout mice exhibit a feature of impaired gut peristalsis<sup>[100,101]</sup>. P2X3 subunits are localized to after hyperpolarizing neurons<sup>[102]</sup>, which are likely to be intrinsic intestinal sensory neurons. The impairment of peristalsis caused by P2X3 gene deletion was independent of the changes in the muscarinic receptor or nicotinic receptor function in the longitudinal muscle layer, suggesting that the P2X3 receptor underlies the sensory mechanisms in the myenteric plexus that mediate peristalsis, and plays an important role in mechanosensitivity and hypersensitivity<sup>[103]</sup>. The therapeutic effect of EA on IBS has been confirmed by a substantial body of literature from clinical data, and the mechanism involves alleviating mechanosensitivity and hypersensitivity<sup>[104]</sup>, where P2X receptors might serve as novel targets<sup>[105]</sup>. Electroacupuncture has been suggested to regulate the P2X3 receptor located in the neurons of the colonic myenteric plexus of IBS rats<sup>[106]</sup>. Whether this has a crucial role in the other parts of the GI tract has not yet been reported, and the results of this study<sup>[104]</sup> provide clues for further research.

### **Enteric glia cells**

The ENS contains a large amount of enteric glial cells (EGCs) surrounding neurons to regulate neuronal activity and protect the gut in different ways, including maintaining the intestinal barrier function and the inflammatory process, which facilitate the control of GI motility<sup>[107]</sup>. Animals with genetic elimination of enteric glia develop jejuno-ileitis inflammation<sup>[108]</sup> and intestinal dysmotility in a sex-dependent manner<sup>[109]</sup>, confirming the pivotal role of EGCs in GI motility disorders<sup>[110]</sup>.

Hemorrhagic shock is frequently accompanied by bowel stasis following intestinal ischemia and reperfusion injury. The initiated inflammatory response, including the production of cytokines and recruitment of leukocytes within the intestinal



**Figure 2 The enteric nervous system mechanism of acupuncture.** Stimulation at ST37 and ST25 had different effects on colonic motility in terms of the effects on excitatory and inhibitory neurons in the enteric nervous system. A: Sympathetic pathway; B: Parasympathetic pathway; 1: Inhibitory neurons; 2: Excitatory neurons; 3: Myenteric intrinsic primary afferent neurons; 4: Submucosal intrinsic primary afferent neurons; 5: Secretomotor/vasodilator neurons; LM: Longitudinal muscle; MP: Myenteric plexus; CM: Circular muscle; (+): Effective, (-): Ineffective<sup>[72]</sup>; ENS: Enteric nervous system.

muscularis, contributes to impaired muscle contractility and mucosal barrier function<sup>[111]</sup>. In addition to promoting gastric emptying, EA at ST36 was also reported to decrease intestinal injury and alleviate inflammation to prevent intra-abdominal adhesion, which serves as one of the main causes of intestinal obstruction<sup>[112,113]</sup>. This protective effect provided by EA acts partly *via* activation of EGCs to secrete substances that regulate the gut function *via* activation of the cholinergic anti-inflammatory pathway<sup>[114,115]</sup>, because both blockage of the cholinergic  $\alpha_7$ nAChR subunit by  $\alpha$ -bungarotoxin and vagotomy could weaken or eliminate the effects of EA at ST36.

Apart from the above-mentioned function, enteric glia are emerging as novel regulators of enteric reflex circuits that contribute to the regulation of GI motility<sup>[116]</sup>. Delvalle *et al*<sup>[117]</sup> provided the first evidence that EGCs have effects on gut motility through modulation of excitatory reflexes involved in GI motility, and activation of glial M3 and M5 subtypes of muscarinic receptors contributes to this kind of physiological regulation. Genetic ablation of M2 and M3 receptors diminished the enhancement of GI motility by EA at ST37<sup>[53]</sup>; however, whether the subtypes of muscarinic receptors of EGCs are involved requires more evidence.

## CNS MECHANISM OF ACUPUNCTURE

As described previously, the extrinsic neural pathway participates in the modulation of GI functions. The CNS, as another important factor of extrinsic innervation, provides its extrinsic neural inputs to control GI motility in a more widespread and integrated manner, which involves the spinal cord, medulla, midbrain, and mesencephalon. The regulatory effect of acupuncture on GI movement also requires the participation of the CNS at multiple levels by changing the activities of the nuclei related to GI movement, including the dorsal motor nucleus (DMV), the solitary tract nucleus (NTS), the raphe nuclei, the lateral hypothalamic area (LHA), and the paraventricular nucleus of the hypothalamus (PVN), which have been confirmed by neuroanatomical tracing following the injection of a neuronal tracer into the stomach and ST36, respectively<sup>[118,119]</sup>. The role of acupuncture on the nuclei of the CNS is summarized in Table 1.

### Brain stem

**The dorsal vagal complex:** A large volume of sensory information of the GI tract, both mechanical and chemical, is transmitted mainly to the NTS *via* the vagal afferent fibers. This information is integrated by NTS neurons and then conveyed to the motor DMV, using  $\gamma$ -aminobutyric acid (GABA), glutamate (Glu), and norepinephrine as the main neurotransmitters to modulate vagal efferent innervation and GI motility through the vagal ACh or NANC pathways<sup>[120-122]</sup>. The NTS and DMN constitute the dorsal vagal complex (DVC), the main neuroanatomical structure of vagovagal

**Table 1 The role of acupuncture on the nuclei of the central nervous system**

The nuclei	Acupoint	Function	Ref.
<b>Brain stem</b>			
DVC	ST36, ST37	Activate neurons discharge	[123]
DVC	RN12, BL21	Increase <i>fos</i> expression	[126]
DVC	RN12, BL21	Motilin and gastrin	[190]
DVC	ST36	Inhibited the release of SP	[133]
DVC	ST36	Increased the expression of astrocytic and microglial	[138]
DMV	PC6	Modulate vagovagal neurocircuits	[44]
DMV	ST36	Modulate vagovagal neurocircuits	[45]
NTS and DMV	ST36, T25	Increased the number of <i>c-Fos</i> immunopositive cells	[150]
<b>The cerebellum</b>			
FN	ST36, LI11, BL21, and CV12	Elevate the spontaneous discharge	[159]
MV	ST36, LI11, and BL21	Modulated the activity of GD neurons	[176]
<b>The hypothalamus</b>			
PVN	BL23, BL18, LR14, GB25, GB24, LR13, DU14	Activate CRH-like neurons; modulate the expression of CRH and the GR	[182]
PVN	ST36 and PC6	Decreased the numbers of double-labeled OT neurons and <i>c-fos</i> neurons	[187]
LHA	ST36	Abolished the inhibitory reaction induced by GD	[170,199]
LHA	ST36, ST25	Modulate the levels of NA, serotonin (5-HT), and the activity of ATPases	[200]
LHA	ST36 and ST25	Alter the activity of the glucose-sensitive neurons	[201]
ARC	ST36, SP6	Increased $\alpha$ -MSH and POMC	[218]
ARC	SP6, ST36	Regulates the expression of neuropeptide Y and POMC neurons	[220]

DVC: Dorsal vagal complex; DMV: Dorsal motor nucleus; NTS: Solitary tract nucleus; SP: Substance P; FN: Fastigial nucleus; MV: Medial vestibular nucleus; GD: Gastric distention; PVN: Paraventricular nucleus of the hypothalamus; LHA: Lateral hypothalamic area; ARC: Arcuate nucleus; CRH: Corticotrophin-releasing hormone; OT: Oxytocin; GR: Glucocorticoid receptor; NA: Noradrenaline;  $\alpha$ -MSH: The melanocyte-stimulating hormone receptor; POMC: Precursor proopiomelanocortin.

reflexes. The role of DVC in acupuncture-mediated regulation of GI function is supported by multiple pieces of evidence from morphological, neuroelectrophysiological, and neurochemical studies. While regulating the electro activity of the stomach, EA at ST36 and ST37 could modulate the firing of the neurons in the NTS and DMV, and increase their Fos expression<sup>[46,123-126]</sup>. Moreover, with the help of a lesion-making device, the DVC was damaged, which resulted in GI tract dysfunction<sup>[127]</sup>, and EA lost its regulatory effect on gastric motility, confirming the important role of DVC in EA-mediated regulation of GI function<sup>[123,128]</sup>.

Brain-gut peptides play an important role in GI function. There is a long list of GI peptides that are capable of regulating GI motility. They are secreted by endocrine cells of the gut as neurotransmitters and neuromodulators, and distribute to the CNS to regulate GI functions<sup>[129-131]</sup>. A few years later, another study demonstrated that EA at RN12 and BL21 enhanced the production of GI hormones, such as motilin and gastrin, in the DVC<sup>[126]</sup>. In addition, acupuncture stimulation at ST36 could modulate the concentration of VIP, motilin, ghrelin, and gastrin in serum<sup>[132]</sup>. Microinjection of substance P (SP), another candidate brain-gut peptide, into the DVC inhibited gastric motility *via* the NK-1 receptor, whereas EA at ST36 enhanced gastric myoelectric activity and simultaneously inhibited the release of SP in the DVC, suggesting that SP in the DVC is involved in the effect of EA on gastric myoelectric activity<sup>[133]</sup>. These data implied the role of neurons in the DVC in the effect of EA on GI movement. The activities of brain-gut peptides are complicated, and their mechanisms differ from each other. In the detection of the same brain-gut peptide in patients, different scholars may have drawn different conclusions, and have not mentioned their complex interconnections. An in-depth study of brain-gut peptides and their relationship with acupuncture would be conducive to a better understanding of the mechanism of acupuncture in GI motility.

Glia constitute almost half of the cells in the CNS. Given the emerging evidence, glial cells have been highlighted in many aspects of CNS function, rather than acting as static bystanders as was long believed. Continued elucidation of glial cell biology, and the dynamic interactions of neurons and glia, will enrich our understanding of nervous system health and diseases<sup>[134]</sup>. Research on acupuncture-mediated regulation of glial cells is increasing year by year, in such fields as analgesic processes, anti-inflammation, and GI function<sup>[135-137]</sup>. Studies suggest that EA at ST36 significantly

increased the expression of astrocytic (glial fibrillary acidic protein) and microglial (OX-42) marker cells in the DVC and regulated gastric activity. Propentofylline (PPF, a blocker of both microglial cells and astrocytes) attenuated the activation by EA of gastric activity, suggesting that EA regulation of gastric activity might be related to the glia in the DVC<sup>[138]</sup>. Although the function of DVC glia in the effect of EA on GI motility has been suggested, the data remains very limited, and the hypothesis must be verified *via* further studies.

Vagovagal neurocircuits comprise specific nuclei, including the NTS and DMV. NTS neurons receive and converge the somatic and visceral sensory information<sup>[139-141]</sup>, whereas the DMV is the origin of vagal efferent fibers, modulating gastric motility as well as other visceral functions (*e.g.*, vagal neurocircuitry and its influence on gastric motility). GABA is the main neurotransmitter that transmits information from the NTS to the DMV. Injection of L-Glu into the DMV might lead to a change in gastric activity<sup>[142-144]</sup>, and whether the effect is excited or suppressed depends on the injection site (rostrum or posterior)<sup>[145]</sup>. Microinjection of GABA into the DMV decreased gastric motility, whereas microinjection of bicuculline, a GABA antagonist, increased gastric motility<sup>[146,147]</sup>. EA at PC6 showed no marked change after the injection of L-Glu; however, gastric movement and the parasympathetic nerve firing after injection of GABA were enhanced, indicating that GABA transmission of the DMV underlies the facilitation of EA at PC6 on gastric motility<sup>[44]</sup>. EA at ST36<sup>[45]</sup> is capable of modulating gastric motility after the injection of L-Glu and GABA, suggesting that both Glu and the GABA receptor in the DMV participate in promoting the gastric motility effect of EA at ST36, *i.e.*, EA at ST36 and PC6 modulate gastric motility *via* the vagovagal reflex.

**The rostral ventrolateral medulla:** The rostral ventrolateral medulla (RVLM), the final area for the integration of sympathetic nerve activity (SNA)<sup>[148]</sup>, processes a large volume of pre-sympathetic (sympathoexcitatory) neurons that project directly into the intermediolateral (IML) column of the spinal cord, and modulates the sympathetic control of visceral functions<sup>[149]</sup>. Takahashi *et al*<sup>[150]</sup> reported that acupuncture at ST-36, but not at ST25, increased the number of *c-Fos* immunopositive cells at the NTS and DMV, while acupuncture at ST25 specifically increased the number of cells at the NTS and RVLM. This suggested that somatic afferents activated by acupuncture at ST36 are conveyed to the NTS and then stimulate the DMV neurons. In contrast, somatic afferents activated by acupuncture at ST25 are conveyed to the NTS and stimulate RVLM neurons. This deduction was supported by anatomical and functional evidence that demonstrated a robust excitatory input from NTS neurons to neurons within the RVLM<sup>[151]</sup>. In spinal functional magnetic resonance imaging research, multiple activations of grey matter (including the spinal dorsal horn and IML) in T8 and T9 vertebrae showed a response to stimulation on ST25<sup>[152]</sup>. Another study found that ST25, ST37, and LI11 could all change the firing rate of the IML; however, ST25 showed the strongest effect. It could be concluded that the NTS–RVLM–IML–sympathetic and NTS–DMV–parasympathetic pathways, respectively, underlie the neural anatomical evidence of regional specific effects of acupuncture on gastric motor function in rats. However, RN12, BL 21, and ST25 are located in the abdomen and back, and share similar segment innervation, yet *c-fos* expression in the NTS and DMV was statistically increased by EA stimulation at RN12 and BL21; therefore, this anatomical evidence of a regional specific effect requires further research for verification.

### **The cerebellum**

**The fastigial nucleus:** The cerebellum is traditionally viewed as a subcortical motor center; however, behavioral, anatomical, and neuroelectrophysiological studies have shown that the cerebellum also has an important regulatory role in the visceral activities of the body<sup>[153]</sup>. The fastigial nucleus (FN) is the oldest nucleus in the cerebellum and inhabits a key position in the regulation of nonsomatic functions, including the GI movement and feeding, among the nuclei of the cerebellum<sup>[154,155]</sup>. Electrical stimulation of the cerebellum can affect GI movement through the vagal and sympathetic nerve pathways<sup>[156-158]</sup>: Activation of adrenergic fibers to release catecholamines, and activation of cholinergic fibers to inhibit or facilitate gastric movement. In addition, studies have shown that electrical stimulation of the FN has a protective effect on the gastric mucosa by reducing gastric ischemia-reperfusion injury and apoptosis of gastric mucosal cells in rats. Needling at ST36, LI11, BL21, and CV12 could elevate the spontaneous discharge frequency of cerebellar FN neurons; however, CV12 seems to have an advantageous role in regulating the cerebellar FN, partly confirming the role of the FN in the central pathway of acupuncture-mediated regulation of GI function<sup>[159]</sup>.

The direct bidirectional pathways between the cerebellum and the hypothalamus



have been demonstrated in a series of neuroanatomical investigations, forming a part of the circuits underlying cerebellar autonomic modulation<sup>[160,161]</sup>. The FN is one of the originating nuclei of the cerebellar-hypothalamic projection, and is the main structure that modulates GI activities in the cerebellum. Recently, the FN-LHA loop has been investigated<sup>[162]</sup>, and is likely to serve as the neural basis for regulating GI functions<sup>[163]</sup>. Gastric vagal and cerebellar fastigial nuclear signals converge on glycemia-sensitive neurons of the LHA in rats<sup>[164]</sup>. Electrical and chemical stimulation of the FN had neuroprotective effects on gastric mucosal stress injury and gastric ischemia-reperfusion damage in rats, and pre-damage of the FN or LHA could eliminate the protective effect of the FN<sup>[165-169]</sup>. Extracellular recording results suggested that the signal of gastric distention (GD) and acupuncture at ST36 converged in the LHA and FN, and acupuncture could modulate the activities of different types of GD-sensitive neurons in the LHA and FN, indicating that the LHA-FN circuit might participate in the central integration mechanism of acupuncture's effects on gastric function<sup>[170]</sup>. However, whether the LHA-FN circuit, which underlies the effect of acupuncture on GI function, acts through the sympathetic nerve or parasympathetic nerve requires further research.

**The vestibular nucleus:** The vestibular nucleus (VN) is the initial structure of the central processing of vestibular orientation information and receives projections from the vestibular nerve, playing a special role in regulating GI function. The work of Gagliuso *et al*<sup>[171]</sup> and Ruggiero *et al*<sup>[172]</sup> demonstrated the neuroanatomy of the vestibulo-solitary pathway, providing an anatomical explanation for the autonomic changes observed, including GI responses, after peripheral vestibular activation<sup>[171,172]</sup>. The medial vestibular nucleus (MV) is the area with the largest volume and cell number in the vestibular nucleus. Direct fiber projection also exists in the MV and dorsal vagus nucleus<sup>[173,174]</sup>. The technique of retrograde axonal transport of horseradish peroxidase in the MV identified a group of neurons sending axons to the "stomach" region of a single tract nucleus, and local irritation of the neurons initiated relaxation of the stomach wall<sup>[175]</sup>. GD and acupuncture at different acupoints (ST36, LI11, and BL21) modulated the activity of the neurons within the MVN, suggesting that the MVN is partly involved in the central integration mechanism underlying acupuncture-mediated regulation of gastric functions<sup>[176]</sup>.

### **The hypothalamus**

The hypothalamus is located on the ventral thalamus and contains distinct groups of nuclei and bundles that regulate a variety of autonomic functions by interconnecting with other parts of the CNS. Among them, the PVN, the LHA, and the arcuate nucleus (ARC) are particularly important in the regulation of GI functions.

**The paraventricular nucleus of the hypothalamus:** The PVN is located near the periventricular zone of the medial hypothalamus, and emerges as one of the most important autonomic control centers *via* its secretion of a variety of peptides<sup>[177,178]</sup>. Among them, corticotrophin-releasing hormone (CRH) and oxytocin (OT), synthesized by magnocellular and parvocellular neurons within the PVN for release into the hypophyseal portal system or projection to other central nuclei, are particularly important in the regulation of GI functions, especially stress-induced alterations of GI motility<sup>[179,180]</sup>. Studies have shown that corticotropin-releasing factor (CRF) activates DMV neurons and decreases gastric motility *via* activation of the vagal NANC pathway<sup>[181]</sup>. Few data are available focusing on acupuncture-mediated regulation of CRH function, and these data suggest that acupuncture could activate CRH-like neurons and modulate the expression of CRH and the glucocorticoid receptor (GR) in the PVN<sup>[182]</sup>. Rinaman *et al*<sup>[183]</sup> showed that the PVN is the sole source of OT-immunopositive fibers and terminals in the DVC. Microinjection of OT into the DMV or PVN resulted in inhibition of gastric motility; however, this effect was ameliorated by vagotomy or microinjection of an OT receptor antagonist into the PVN<sup>[184]</sup>. Llewellyn's work provided the anatomical basis for the functional pathways in GI motility regulation by OT: As a neurotransmitter, OT is transmitted from the PVN to the DVC, where it activates motor neurons of the brainstem vagus nerve *via* the NANC pathway, thereby inhibiting GI movement<sup>[185,186]</sup>. EA at the limbic acupoints ST36 and PC6 increased the intragastric pressure and decreased the numbers of double-labeled OT neurons and *c-fos* neurons within the PVN<sup>[187]</sup>. However, the effect of acupuncture was significantly decreased after dorsolateral funiculus or spinal cord transection, suggesting that the dorsolateral funiculus is the main conduction bundle responsible for acupuncture signal transduction into the PVN<sup>[188]</sup>. Knockout of the OT gene accelerated gastric emptying, and influenced the effect of acupuncture, further confirming the paraventricular nucleus OT neurons as the initiating device of autonomic nervous pathways, which might participate in EA-mediated regulation of

gastric motility, in the form of neural and neuroendocrine stimuli<sup>[189]</sup>. Thus, acupuncture signals gather in the DVC and PVN. PVN lesions cause a decrease in gastric motility, and EA is unable to restore it, demonstrating that the PVN is another central target of acupuncture's regulation of gastric motility<sup>[190]</sup>. Taken together, these data suggest that the acupuncture signal is transmitted to the solitary nucleus through the spinal cord, and after initial integration by the solitary nucleus, the ascending projection activates the PVN. The descending projection is performed by the PVN-DVC-vagal nerve pathway, through the nerve system and neuroendocrine system to regulate GI function.

**The lateral hypothalamic area:** The LHA is linked to celiac sympathetic and parasympathetic nerves, and regulates metabolic, behavioral, and autonomic functions, and serves as the feeding center<sup>[191]</sup>. Its influence on GI function and feeding behavior might be mediated by the DVC. As early as the 1980s, with the help of tracing techniques, an anatomical connection was found between the LHA and the dorsal DVC<sup>[192,193]</sup>. Moreover, this pathway involves multiple neurotransmitters and neuropeptides, including the projection of ghrelin neurons<sup>[194-196]</sup>. Ghrelin has central and peripheral actions in gut motility, and its receptors are regarded as targets for novel motility drugs<sup>[197,198]</sup>. Ghrelin fibers originating in the LHA project into the DVC. The electrical stimulation of the LHA promotes gastric motility and GD neurons in the DVC, and this excitatory effect is partially blocked by pretreatment with a ghrelin receptor antagonist and is diminished by an electrical lesion of the DVC. Cisplatin-treatment could weaken this excitatory effect of electrical stimulation in the LHA.

Somatic input from ST36 abolished the inhibitory reaction of the LHA induced by gastric distention<sup>[170,199]</sup>. Acupuncture could modulate the levels of noradrenaline, serotonin (5-HT), and the activity of ATPases in the LHA<sup>[200]</sup>. However, ST36 and ST25 are able to alter the activity of the glucose-sensitive neurons within the LHA, which is also the candidate target of ghrelin<sup>[201-203]</sup>. Increasing numbers of investigations have focused on the role of acupuncture in the peripheral actions of ghrelin in gut motility in the clinic<sup>[204,205]</sup>. The level of plasma ghrelin was measured in patients with GI cancer and obesity<sup>[206,207]</sup> and in mice. The results suggested that acupuncture has a benign effect on the modulation of ghrelin secretion. However, the literature on the central role of acupuncture on ghrelin secretion is limited. It has been confirmed that acupuncture can activate the TRPV1 receptor<sup>[21,23,30,31]</sup>, which can also be activated by capsaicin during GI motility, *i.e.*, acupuncture has a similar effect to capsaicin. Capsaicin regulates the central action of ghrelin<sup>[194-196]</sup>; therefore, we speculated that acupuncture also has a central regulatory effect on ghrelin, which requires further data to prove this.

**Hypothalamic arcuate nucleus:** The ARC is located at the base of the hypothalamus and adjacent to the third ventricle. It receives extensive afferent inputs and processes efferent fibers projecting to other central regions, underlying its role in the regulation of autonomic functions, including GI functions<sup>[208-210]</sup>. Stimulation of neurons in the ARC has been demonstrated to increase colonic motility<sup>[211]</sup> and inhibit gastric phasic contractions<sup>[212]</sup> as well as gastric acid secretion *via* vagal pathways<sup>[213]</sup>. Its effect on the colon could be blocked by microinjection of CRF antagonists into the PVN, suggesting that an Arc-PVN neurocircuit might be involved in the regulation of GI functions *via* vagal efferent fibers.

The role of ARC in the modulation of acupuncture has been demonstrated; however, most research has been confined to the area of analgesia<sup>[214]</sup>. Applying the tracing technique, the afferent pathways of CV4 were explored. After the injection of Pseudorabies virus (PRV) into the acupoint of CV4, nuclei such as ARC and PVN showed PRV-immunoreactive neurons in normal rats<sup>[215]</sup>. Other results from Fos-CreER-based genetic mapping indicated that acupuncture at PC6 activates a series of regions, including the ARC and PVN<sup>[216]</sup>. These studies confirmed that ARC could receive the somatic fibers of acupuncture and modulate its activity. Following ligation of the ARC, the effect of acupuncture on the electrogastronomy of rabbits was attenuated<sup>[217]</sup>, providing anatomical and physiological evidence for the ability of acupuncture to regulate GI motility *via* the ARC. EA treatment increased the peptide levels of the melanocyte-stimulating hormone receptor ( $\alpha$ -MSH) and the mRNA levels of its precursor proopiomelanocortin (POMC) in the ARC of hypothalamic neurons of rats with diet-induced obesity<sup>[218]</sup>. In addition, acupuncture also regulates the expression of neuropeptide Y, a cocaine and amphetamine-regulated transcript peptide<sup>[219,220]</sup>, together with POMC neurons in the ARC, playing an important role in feeding and gastric emptying, which is potentially in a pathological state<sup>[221,222]</sup>; therefore, feeding-related peptides in the ARC might underlie another mechanism by which acupuncture regulates GI motility.



## CONCLUSION

Although marked progress has been made in revealing the neural mechanism underlying acupuncture's effects on the GI tract, there is still a lot of work to be done to unravel the complex interaction between the peripheral and CNSs, as well as the distinct CNS areas related to the integration of GI homeostatic functions. Acupuncture is a physical stimulus. When the needle penetrates the body, the mechanical force generated directly or indirectly acts on the acupoint area. The mechanical stimulation translates into neurochemical signals, inducing a somatic afferent signal; however, only when the intensity of the stimulus is over the threshold of the A $\delta$  and/or C-fibers can acupuncture obviously modulate GI motility, whose receptor mechanism mainly relies on TRPV1. In the process of acupuncture, a regional-specific effect is exhibited in the modulation of GI motility, the neurological basis of which is now considered to be the somatoautonomic reflex, and the spinal segmental innervation hypothesis could be borrowed to explain it: Stimulation at homotopic acupoints (with the same spinal segments from the innervated visceral organs) decrease the GI pressure *via* the sympathetic pathways (mainly involving  $\beta$ 1 and  $\beta$ 2 receptors), while stimulation at heterotopic acupoints (with different spinal segments from the innervated visceral organs) induces GI facilitation *via* parasympathetic pathways (both cholinergic and NANC vagal efferents are involved). Other than that, the ENS, including enteric neurons and glia cells, also adds to the effect of acupuncture on the modulation of GI motility. The CNS provides its extrinsic neural inputs to control GI motility in a more widespread and integrated manner. The regulatory effect of acupuncture on GI movements also requires the participation of the CNS at multiple levels. In this review, only some nuclei of the brain stem, cerebellum, and hypothalamus are discussed, because of the complexity of the CNS and the blurred relationship between distinct nuclei in the CNS and acupuncture. Those connections among the nuclei constitute the anatomical and functional basis controlling GI motility. The acupuncture signals over GI functions were also analyzed and integrated through this connection. Applying modern and constantly updated technology is conducive to gaining a better understanding of the mechanism of acupuncture's effects on GI motility.

## REFERENCES

- 1 Du YH, Huang W, Xiong J, Li B, Shi L, Fan XN. [Preliminary study on disease menu of acupuncture and moxibustion abroad]. *Zhongguo Zhen Jiu* 2009; **29**: 53-55 [PMID: 19186724 DOI: 10.13703/j.0255-2930.2009.01.024]
- 2 Li B, Du YH, Xiong J, Xu YL, Li Y, Wang X, Li ZH, Liu JL, Zhang YY. [Indications of acupuncture outpatient based on clinical investigation]. *Zhongguo Zhen Jiu* 2011; **31**: 733-737 [PMID: 21894703 DOI: 10.13703/j.0255-2930.2011.08.033]
- 3 Tack J, Carbone F, Rotondo A. Gastroparesis. *Curr Opin Gastroenterol* 2015; **31**: 499-505 [PMID: 26406565 DOI: 10.1097/MOG.0000000000000220]
- 4 Billiauws L, Corcos O, Joly F. Dysmotility disorders: a nutritional approach. *Curr Opin Clin Nutr Metab Care* 2014; **17**: 483-488 [PMID: 25023191 DOI: 10.1097/MCO.0000000000000095]
- 5 Keller J, Bassotti G, Clarke J, Dinning P, Fox M, Grover M, Hellström PM, Ke M, Layer P, Malagelada C, Parkman HP, Scott SM, Tack J, Simren M, Törnblom H, Camilleri M; International Working Group for Disorders of Gastrointestinal Motility and Function. Expert consensus document: Advances in the diagnosis and classification of gastric and intestinal motility disorders. *Nat Rev Gastroenterol Hepatol* 2018; **15**: 291-308 [PMID: 29622808 DOI: 10.1038/nrgastro.2018.7]
- 6 Rychter J, Espín F, Gallego D, Vergara P, Jiménez M, Clavé P. Colonic smooth muscle cells and colonic motility patterns as a target for irritable bowel syndrome therapy: mechanisms of action of otilonium bromide. *Therap Adv Gastroenterol* 2014; **7**: 156-166 [PMID: 25057296 DOI: 10.1177/1756283X14525250]
- 7 Tanaka Y, Kanazawa M, Palsson OS, Tilburg MAV, Gangarosa LM, Fukudo S, Drossman DA, Whitehead WE. Increased Postprandial Colonic Motility and Autonomic Nervous System Activity in Patients With Irritable Bowel Syndrome: A Prospective Study. *J Neurogastroenterol Motil* 2018; **24**: 87-95 [PMID: 29291610 DOI: 10.5056/jnm16216]
- 8 He Y, Yang C, Wang P, Yang L, Wu H, Liu H, Qi M, Guo Z, Li J, Shi H, Wu X, Hu Z. Child compound Endothelium corneum attenuates gastrointestinal dysmotility through regulating the homeostasis of brain-gut-microbiota axis in functional dyspepsia rats. *J Ethnopharmacol* 2019; **240**: 111953 [PMID: 31082513 DOI: 10.1016/j.jep.2019.111953]
- 9 Lindberg G. Pseudo-obstruction, enteric dysmotility and irritable bowel syndrome. *Best Pract Res Clin Gastroenterol* 2019; **40-41**: 101635 [PMID: 31594655 DOI: 10.1016/j.bpg.2019.101635]
- 10 Rao SS, Rattanakavit K, Patcharatrakul T. Diagnosis and management of chronic constipation in adults. *Nat Rev Gastroenterol Hepatol* 2016; **13**: 295-305 [PMID: 27033126 DOI: 10.1038/nrgastro.2016.53]
- 11 Moshiree B, Potter M, Talley NJ. Epidemiology and Pathophysiology of Gastroparesis. *Gastrointest Endosc Clin N Am* 2019; **29**: 1-14 [PMID: 30396519 DOI: 10.1016/j.giec.2018.08.010]
- 12 Everhart JE, Ruhl CE. Burden of digestive diseases in the United States part I: overall and upper gastrointestinal diseases. *Gastroenterology* 2009; **136**: 376-386 [PMID: 19124023 DOI: 10.1053/j.gastro.2008.12.015]
- 13 Madisch A, Vinson BR, Abdel-Aziz H, Kelber O, Nieber K, Kraft K, Storr M. Modulation of gastrointestinal motility beyond metoclopramide and domperidone: Pharmacological and clinical evidence

- for phytotherapy in functional gastrointestinal disorders. *Wien Med Wochenschr* 2017; **167**: 160-168 [PMID: 28424994 DOI: 10.1007/s10354-017-0557-3]
- 14 **Kagitani F**, Uchida S, Hotta H. Afferent nerve fibers and acupuncture. *Auton Neurosci* 2010; **157**: 2-8 [PMID: 20494626 DOI: 10.1016/j.autneu.2010.03.004]
  - 15 **Kagitani F**, Uchida S, Hotta H, Aikawa Y. Manual acupuncture needle stimulation of the rat hindlimb activates groups I, II, III and IV single afferent nerve fibers in the dorsal spinal roots. *Jpn J Physiol* 2005; **55**: 149-155 [PMID: 15992454 DOI: 10.2170/jphysiol.R2120]
  - 16 **Li YQ**, Zhu B, Rong PJ, Ben H, Li YH. Neural mechanism of acupuncture-modulated gastric motility. *World J Gastroenterol* 2007; **13**: 709-716 [PMID: 17278193 DOI: 10.3748/wjg.v13.i5.709]
  - 17 **Koizumi K**, Sato A, Terui N. Role of somatic afferents in autonomic system control of the intestinal motility. *Brain Res* 1980; **182**: 85-97 [PMID: 6243236 DOI: 10.1016/0006-8993(80)90832-x]
  - 18 **Noguchi E**, Ohsawa H, Tanaka H, Ikeda H, Aikawa Y. Electro-acupuncture stimulation effects on duodenal motility in anesthetized rats. *Jpn J Physiol* 2003; **53**: 1-7 [PMID: 12689352 DOI: 10.2170/jphysiol.53.1]
  - 19 **Li WG**, Xu TL. ASIC3 channels in multimodal sensory perception. *ACS Chem Neurosci* 2011; **2**: 26-37 [PMID: 22778854 DOI: 10.1021/cn100094b]
  - 20 **Caterina MJ**, Leffler A, Malmberg AB, Martin WJ, Trafton J, Petersen-Zeit KR, Koltzenburg M, Basbaum AI, Julius D. Impaired nociception and pain sensation in mice lacking the capsaicin receptor. *Science* 2000; **288**: 306-313 [PMID: 10764638 DOI: 10.1126/science.288.5464.306]
  - 21 **Yu Z**, Cao X, Xia Y, Ren B, Feng H, Wang Y, Jiang J, Xu B. Electroacupuncture Stimulation at CV12 Inhibits Gastric Motility via TRPV1 Receptor. *Evid Based Complement Alternat Med* 2013; **2013**: 294789 [PMID: 24106521 DOI: 10.1155/2013/294789]
  - 22 **Pang T**, Lu C, Wang K, Liang C, Yu Z, Zhu B, Xu B. Electroacupuncture at ST25 Inhibits Cisapride-Induced Gastric Motility in an Intensity-Dependent Manner. *Evid Based Complement Alternat Med* 2016; **2016**: 3457025 [PMID: 26997963 DOI: 10.1155/2016/3457025]
  - 23 **Yu Z**, Zhang N, Lu CX, Pang TT, Wang KY, Jiang JF, Zhu B, Xu B. Electroacupuncture at ST25 inhibits jejunal motility: Role of sympathetic pathways and TRPV1. *World J Gastroenterol* 2016; **22**: 1834-1843 [PMID: 26855542 DOI: 10.3748/wjg.v22.i5.1834]
  - 24 **Su YS**, He W, Wang C, Shi H, Zhao YF, Xin JJ, Wang XY, Shang HY, Hu L, Jing XH, Zhu B. "Intensity-response" effects of electroacupuncture on gastric motility and its underlying peripheral neural mechanism. *Evid Based Complement Alternat Med* 2013; **2013**: 535742 [PMID: 23935667 DOI: 10.1155/2013/535742]
  - 25 **Andrew D**, Greenspan JD. Mechanical and heat sensitization of cutaneous nociceptors after peripheral inflammation in the rat. *J Neurophysiol* 1999; **82**: 2649-2656 [PMID: 10561434 DOI: 10.1152/jn.1999.82.5.2649]
  - 26 **McMullan S**, Lumb BM. Spinal dorsal horn neuronal responses to myelinated versus unmyelinated heat nociceptors and their modulation by activation of the periaqueductal grey in the rat. *J Physiol* 2006; **576**: 547-556 [PMID: 16916903 DOI: 10.1113/jphysiol.2006.117754]
  - 27 **Cain DM**, Khasabov SG, Simone DA. Response properties of mechanoreceptors and nociceptors in mouse glabrous skin: an in vivo study. *J Neurophysiol* 2001; **85**: 1561-1574 [PMID: 11287480 DOI: 10.1152/jn.2001.85.4.1561]
  - 28 **Su YS**, Xin JJ, Yang ZK, He W, Shi H, Wang XY, Hu L, Jing XH, Zhu B. Effects of Different Local Moxibustion-Like Stimuli at Zusanli (ST36) and Zhongwan (CV12) on Gastric Motility and Its Underlying Receptor Mechanism. *Evid Based Complement Alternat Med* 2015; **2015**: 486963 [PMID: 26246837 DOI: 10.1155/2015/486963]
  - 29 **Su YS**, Yang ZK, Xin JJ, He W, Shi H, Wang XY, Hu L, Jing XH, Zhu B. Somatosensory Nerve Fibers Mediated Generation of De-qi in Manual Acupuncture and Local Moxibustion-Like Stimuli-Modulated Gastric Motility in Rats. *Evid Based Complement Alternat Med* 2014; **2014**: 673239 [PMID: 24876876 DOI: 10.1155/2014/673239]
  - 30 **Wu SY**, Chen WH, Hsieh CL, Lin YW. Abundant expression and functional participation of TRPV1 at Zusanli acupoint (ST36) in mice: mechanosensitive TRPV1 as an "acupuncture-responding channel". *BMC Complement Altern Med* 2014; **14**: 96 [PMID: 24612851 DOI: 10.1186/1472-6882-14-96]
  - 31 **Chen HC**, Chen MY, Hsieh CL, Wu SY, Hsu HC, Lin YW. TRPV1 is a Responding Channel for Acupuncture Manipulation in Mice Peripheral and Central Nerve System. *Cell Physiol Biochem* 2018; **49**: 1813-1824 [PMID: 30231245 DOI: 10.1159/000493627]
  - 32 **Furness JB**. The enteric nervous system and neurogastroenterology. *Nat Rev Gastroenterol Hepatol* 2012; **9**: 286-294 [PMID: 22392290 DOI: 10.1038/nrgastro.2012.32]
  - 33 **Furness JB**, Callaghan BP, Rivera LR, Cho HJ. The enteric nervous system and gastrointestinal innervation: integrated local and central control. *Adv Exp Med Biol* 2014; **817**: 39-71 [PMID: 24997029 DOI: 10.1007/978-1-4939-0897-4\_3]
  - 34 **Sato A**, Schmidt RF. Muscle and cutaneous afferents evoking sympathetic reflexes. *Brain Res* 1966; **2**: 399-401 [PMID: 5968209 DOI: 10.1016/0006-8993(66)90011-4]
  - 35 **Sato A**, Kaufman A, Koizumi K, Brooks CM. Afferent nerve groups and sympathetic reflex pathways. *Brain Res* 1969; **14**: 575-587 [PMID: 4241803 DOI: 10.1016/0006-8993(69)90200-5]
  - 36 **Uchida S**, Kagitani F, Sato-Suzuki I. Somatoautonomic reflexes in acupuncture therapy: A review. *Auton Neurosci* 2017; **203**: 1-8 [PMID: 27876359 DOI: 10.1016/j.autneu.2016.11.001]
  - 37 **Takahashi T**. Effect and mechanism of acupuncture on gastrointestinal diseases. *Int Rev Neurobiol* 2013; **111**: 273-294 [PMID: 24215928 DOI: 10.1016/B978-0-12-411545-3.00014-6]
  - 38 **Iwa M**, Tateiwa M, Sakita M, Fujimiya M, Takahashi T. Anatomical evidence of regional specific effects of acupuncture on gastric motor function in rats. *Auton Neurosci* 2007; **137**: 67-76 [PMID: 17884736 DOI: 10.1016/j.autneu.2007.08.001]
  - 39 **Kametani H**, Sato A, Sato Y, Simpson A. Neural mechanisms of reflex facilitation and inhibition of gastric motility to stimulation of various skin areas in rats. *J Physiol* 1979; **294**: 407-418 [PMID: 512950 DOI: 10.1113/jphysiol.1979.sp012937]
  - 40 **Li YQ**, Zhu B, Rong PJ, Ben H, Li YH. Effective regularity in modulation on gastric motility induced by different acupoint stimulation. *World J Gastroenterol* 2006; **12**: 7642-7648 [PMID: 17171793 DOI: 10.3748/wjg.v12.i47.7642]
  - 41 **Qin QG**, Gao XY, Liu K, Yu XC, Li L, Wang HP, Zhu B. Acupuncture at heterotopic acupoints enhances jejunal motility in constipated and diarrheic rats. *World J Gastroenterol* 2014; **20**: 18271-18283 [PMID: 25561794 DOI: 10.3748/wjg.v20.i48.18271]
  - 42 **Li H**, He T, Xu Q, Li Z, Liu Y, Li F, Yang BF, Liu CZ. Acupuncture and regulation of gastrointestinal

- function. *World J Gastroenterol* 2015; **21**: 8304-8313 [PMID: 26217082 DOI: 10.3748/wjg.v21.i27.8304]
- 43 **Hu X**, Yuan M, Yin Y, Wang Y, Li Y, Zhang N, Sun X, Yu Z, Xu B. Electroacupuncture at LI11 promotes jejunal motility via the parasympathetic pathway. *BMC Complement Altern Med* 2017; **17**: 329 [PMID: 28637453 DOI: 10.1186/s12906-017-1826-9]
- 44 **Lu M**, Chen C, Li W, Yu Z, Xu B. EA at PC6 Promotes Gastric Motility: Role of Brainstem Vagovagal Neurocircuits. *Evid Based Complement Alternat Med* 2019; **2019**: 7457485 [PMID: 31379967 DOI: 10.1155/2019/7457485]
- 45 **Lu MJ**, Yu Z, He Y, Yin Y, Xu B. Electroacupuncture at ST36 modulates gastric motility via vagovagal and sympathetic reflexes in rats. *World J Gastroenterol* 2019; **25**: 2315-2326 [PMID: 31148903 DOI: 10.3748/wjg.v25.i19.2315]
- 46 **Tada H**, Fujita M, Harris M, Tatewaki M, Nakagawa K, Yamamura T, Pappas TN, Takahashi T. Neural mechanism of acupuncture-induced gastric relaxations in rats. *Dig Dis Sci* 2003; **48**: 59-68 [PMID: 12645791 DOI: 10.1023/a:1021730314068]
- 47 **Kaan SK**, Mei QB, Cho CH. A mechanistic study of beta-adrenoceptor antagonists on ethanol-induced gastric damage. *Eur J Pharmacol* 1996; **317**: 115-122 [PMID: 8982727 DOI: 10.1016/s0014-2999(96)00705-4]
- 48 **Yu O**, Ouyang A. Distribution of beta-adrenoceptor subtypes in gastrointestinal tract of nondiabetic and diabetic BB rats. A longitudinal study. *Dig Dis Sci* 1997; **42**: 1146-1153 [PMID: 9201075 DOI: 10.1023/a:1018877318101]
- 49 **Stengel PW**, Gomez J, Wess J, Cohen ML. M(2) and M(4) receptor knockout mice: muscarinic receptor function in cardiac and smooth muscle in vitro. *J Pharmacol Exp Ther* 2000; **292**: 877-885 [PMID: 10688600]
- 50 **Matsui M**, Motomura D, Karasawa H, Fujikawa T, Jiang J, Komiya Y, Takahashi S, Taketo MM. Multiple functional defects in peripheral autonomic organs in mice lacking muscarinic acetylcholine receptor gene for the M3 subtype. *Proc Natl Acad Sci USA* 2000; **97**: 9579-9584 [PMID: 10944224 DOI: 10.1073/pnas.97.17.9579]
- 51 **Gao LL**, Guo Y, Sha T, Liu YY, Tang JB, Yuan F, Zhou T, Hong SH, Ming D. Differential effects of variable frequencies of manual acupuncture at ST36 in rats with atropine-induced inhibition of gastric motility. *Acupunct Med* 2016; **34**: 33-39 [PMID: 26177688 DOI: 10.1136/acupmed-2015-010756]
- 52 **Li H**, Wang YP. Effect of auricular acupuncture on gastrointestinal motility and its relationship with vagal activity. *Acupunct Med* 2013; **31**: 57-64 [PMID: 23211189 DOI: 10.1136/acupmed-2012-010173]
- 53 **Okada M**, Itoh K, Kitakoji H, Imai K. Mechanism of Electroacupuncture on Postoperative Ileus Induced by Surgical Stress in Rats. *Med Acupunct* 2019; **31**: 109-115 [PMID: 31031877 DOI: 10.1089/acu.2018.1322]
- 54 **Iwa M**, Sakita M. Effects of acupuncture and moxibustion on intestinal motility in mice. *Am J Chin Med* 1994; **22**: 119-125 [PMID: 7992811 DOI: 10.1142/S0192415X94000152]
- 55 **Gao X**, Zhao Y, Su Y, Liu K, Yu X, Cui C, Yang Z, Shi H, Jing X, Zhu B.  $\beta$ 1/2 or M2/3 Receptors Are Required for Different Gastrointestinal Motility Responses Induced by Acupuncture at Heterotopic or Homotopic Acupoints. *PLoS One* 2016; **11**: e0168200 [PMID: 27978539 DOI: 10.1371/journal.pone.0168200]
- 56 **Gao X**, Qin Q, Yu X, Liu K, Li L, Qiao H, Zhu B. Acupuncture at heterotopic acupoints facilitates distal colonic motility via activating M3 receptors and somatic afferent C-fibers in normal, constipated, or diarrhoeic rats. *Neurogastroenterol Motil* 2015; **27**: 1817-1830 [PMID: 26459908 DOI: 10.1111/nmo.12694]
- 57 **Yuan M**, Li Y, Wang Y, Zhang N, Hu X, Yin Y, Zhu B, Yu Z, Xu B. Electroacupuncture at ST37 Enhances Jejunal Motility via Excitation of the Parasympathetic System in Rats and Mice. *Evid Based Complement Alternat Med* 2016; **2016**: 3840230 [PMID: 27818700 DOI: 10.1155/2016/3840230]
- 58 **Tatewaki M**, Harris M, Uemura K, Ueno T, Hoshino E, Shiotani A, Pappas TN, Takahashi T. Dual effects of acupuncture on gastric motility in conscious rats. *Am J Physiol Regul Integr Comp Physiol* 2003; **285**: R862-R872 [PMID: 12959921 DOI: 10.1152/ajpregu.00715.2002]
- 59 **Yu Z**, Xia YB, Lu MX, Lin J, Yu WJ, Xu B. [Influence of electroacupuncture stimulation of "tianshu" (ST 25), "quchi" (LI 11) and "shangjuxu" (ST 37) and their pairs on gastric motility in the rat]. *Zhen Ci Yan Jiu* 2013; **38**: 40-47 [PMID: 23650799 DOI: 10.13702/j.1000-0607.2013.01.015]
- 60 **Browning KN**, Travaglini RA. Plasticity of vagal brainstem circuits in the control of gastrointestinal function. *Auton Neurosci* 2011; **161**: 6-13 [PMID: 21147043 DOI: 10.1016/j.autneu.2010.11.001]
- 61 **Uchida S**, Kagitani F, Hotta H. Neural mechanisms of reflex inhibition of heart rate elicited by acupuncture-like stimulation in anesthetized rats. *Auton Neurosci* 2010; **157**: 18-23 [PMID: 20460195 DOI: 10.1016/j.autneu.2010.03.021]
- 62 **Uchida S**, Shimura M, Ohsawa H, Suzuki A. Neural mechanism of bradycardiac responses elicited by acupuncture-like stimulation to a hind limb in anesthetized rats. *J Physiol Sci* 2007; **57**: 377-382 [PMID: 18081987 DOI: 10.2170/physiolsci.RP008407]
- 63 **Uchida S**, Kagitani F, Hotta H. Mechanism of the reflex inhibition of heart rate elicited by acupuncture-like stimulation in anesthetized rats. *Auton Neurosci* 2008; **143**: 12-19 [PMID: 18693143 DOI: 10.1016/j.autneu.2008.06.005]
- 64 **Kimura A**, Ohsawa H, Sato A, Sato Y. Somatocardiocardiovascular reflexes in anesthetized rats with the central nervous system intact or acutely spinalized at the cervical level. *Neurosci Res* 1995; **22**: 297-305 [PMID: 7478293 DOI: 10.1016/0168-0102(95)00907-b]
- 65 **Chen JZ**, Lu MJ, Han X, Xu B, Yu Z. [Influence of electroacupuncture of "Zhongwan" (CV12) and "Zusanli" (ST36) in different combinations of stimulating strength and sequence on intragastric pressure in normal rats]. *Zhen Ci Yan Jiu* 2019; **44**: 125-130 [PMID: 30945489 DOI: 10.13702/j.1000-0607.170922]
- 66 **Jia BA**, Cheng CY, Lin YW, Li TC, Liu HJ, Hsieh CL. The 2 Hz and 15 Hz electroacupuncture induced reverse effect on autonomic function in healthy adult using a heart rate variability analysis. *J Tradit Complement Med* 2011; **1**: 51-56 [PMID: 24716105 DOI: 10.1016/s2225-4110(16)30056-6]
- 67 **Kimura K**, Ishida K, Takahashi N, Toge Y, Tajima F. Effects of acupuncture at the ST-36 point on muscle sympathetic nerve activity and blood pressure in normal adults. *Auton Neurosci* 2017; **208**: 131-136 [PMID: 28887003 DOI: 10.1016/j.autneu.2017.08.009]
- 68 **Kim JB**, Uk NN. Sympathetic Nervous Activity is Involved in the Anti-Inflammatory Effects by Electroacupuncture Stimulation. *Korean J Acupunct* 2019; **36**: 162-170 [DOI: 10.14406/acu.2019.015]
- 69 **Tracey KJ**. The inflammatory reflex. *Nature* 2002; **420**: 853-859 [PMID: 12490958 DOI: 10.1038/nature01321]
- 70 **Kim HY**, Hahm DH, Pyun KH, Lee HJ, Nam TC, Shim I. Effect of traditional acupuncture on proximal

- colonic motility in conscious dogs. *J Vet Med Sci* 2006; **68**: 603-607 [PMID: [16820718](#) DOI: [10.1292/jvms.68.603](#)]
- 71 **Yuxue Z**, Changxiang C, Qingguang Q, Hui B, Junhong G, Xiaochun Y, Bing Z. Effect of manual acupuncture on bowel motility in normal kunming mouse. *J Tradit Chin Med* 2015; **35**: 227-233 [PMID: [25975058](#) DOI: [10.1016/s0254-6272\(15\)30033-9](#)]
  - 72 **Liang C**, Wang KY, Gong MR, Li Q, Yu Z, Xu B. Electro-acupuncture at ST37 and ST25 induce different effects on colonic motility via the enteric nervous system by affecting excitatory and inhibitory neurons. *Neurogastroenterol Motil* 2018; **30**: e13318 [PMID: [29488287](#) DOI: [10.1111/nmo.13318](#)]
  - 73 **Iwa M**, Matsushima M, Nakade Y, Pappas TN, Fujimiya M, Takahashi T. Electroacupuncture at ST-36 accelerates colonic motility and transit in freely moving conscious rats. *Am J Physiol Gastrointest Liver Physiol* 2006; **290**: G285-G292 [PMID: [16254048](#) DOI: [10.1152/ajpgi.00068.2005](#)]
  - 74 **Luo D**, Liu S, Xie X, Hou X. Electroacupuncture at acupoint ST-36 promotes contractility of distal colon via a cholinergic pathway in conscious rats. *Dig Dis Sci* 2008; **53**: 689-693 [PMID: [17768682](#) DOI: [10.1007/s10620-007-9929-7](#)]
  - 75 **Corman ML**. Colon and Rectal Surgery. Philadelphia: Lippincott Williams & Wilkins, 2005: 1743
  - 76 **Willard FH**, Robert C, Ward RJH, John A, Jerome editors. Robert C, Ward RJH, John A, Jerome editors. Foundations for osteopathic medicine. Philadelphia: Lippincott Williams & Wilkins, 2002: 105-111
  - 77 **Dorofeeva AA**, Pantelev SS, Makarov FN. Involvement of the sacral parasympathetic nucleus in the innervation of the descending colon and rectum in cats. *Neurosci Behav Physiol* 2009; **39**: 207-210 [PMID: [19142736](#) DOI: [10.1007/s11055-009-9104-z](#)]
  - 78 **Altschuler SM**, Escardo J, Lynn RB, Miselis RR. The central organization of the vagus nerve innervating the colon of the rat. *Gastroenterology* 1993; **104**: 502-509 [PMID: [8425692](#) DOI: [10.1016/0016-5085\(93\)90419-d](#)]
  - 79 **Tong WD**, Ridolfi TJ, Kosinski L, Ludwig K, Takahashi T. Effects of autonomic nerve stimulation on colorectal motility in rats. *Neurogastroenterol Motil* 2010; **22**: 688-693 [PMID: [20067587](#) DOI: [10.1111/j.1365-2982.2009.01461.x](#)]
  - 80 **Berthoud HR**, Carlson NR, Powley TL. Topography of efferent vagal innervation of the rat gastrointestinal tract. *Am J Physiol* 1991; **260**: R200-R207 [PMID: [1992820](#) DOI: [10.1152/ajpregu.1991.260.1.R200](#)]
  - 81 **Kwak JM**, Babygirija R, Gribovskaja-Rupp I, Takahashi T, Yamato S, Ludwig K. Regional difference in colonic motility response to electrical field stimulation in Guinea pig. *J Neurogastroenterol Motil* 2013; **19**: 192-203 [PMID: [23667750](#) DOI: [10.5056/jnm.2013.19.2.192](#)]
  - 82 **Gribovskaja-Rupp I**, Babygirija R, Takahashi T, Ludwig K. Autonomic nerve regulation of colonic peristalsis in Guinea pigs. *J Neurogastroenterol Motil* 2014; **20**: 185-196 [PMID: [24847719](#) DOI: [10.5056/jnm.2014.20.2.185](#)]
  - 83 **Takahashi T**, Owyang C. Regional differences in the nitrergic innervation between the proximal and the distal colon in rats. *Gastroenterology* 1998; **115**: 1504-1512 [PMID: [9834278](#) DOI: [10.1016/s0016-5085\(98\)70029-0](#)]
  - 84 **Hasler WL**, Kurosawa S, Chung OY. Regional cholinergic differences between distal and proximal colonic myenteric plexus. *Am J Physiol* 1990; **258**: G404-G410 [PMID: [2316654](#) DOI: [10.1152/ajpgi.1990.258.3.G404](#)]
  - 85 **Li Z**, Hao MM, Van den Haute C, Baekelandt V, Boesmans W, Vanden Berghe P. Regional complexity in enteric neuron wiring reflects diversity of motility patterns in the mouse large intestine. *Elife* 2019; **8**: e42914 [PMID: [30747710](#) DOI: [10.7554/eLife.42914](#)]
  - 86 **Espinosa-Medina I**, Saha O, Boismoreau F, Chettouh Z, Rossi F, Richardson WD, Brunet JF. The sacral autonomic outflow is sympathetic. *Science* 2016; **354**: 893-897 [PMID: [27856909](#) DOI: [10.1126/science.aah5454](#)]
  - 87 **Horn JP**. The sacral autonomic outflow is parasympathetic: Langley got it right. *Clin Auton Res* 2018; **28**: 181-185 [PMID: [29453697](#) DOI: [10.1007/s10286-018-0510-6](#)]
  - 88 **Espinosa-Medina I**, Saha O, Boismoreau F, Brunet JF. The "sacral parasympathetic": ontogeny and anatomy of a myth. *Clin Auton Res* 2018; **28**: 13-21 [PMID: [29103139](#) DOI: [10.1007/s10286-017-0478-7](#)]
  - 89 **Nezami BG**, Srinivasan S. Enteric nervous system in the small intestine: pathophysiology and clinical implications. *Curr Gastroenterol Rep* 2010; **12**: 358-365 [PMID: [20725870](#) DOI: [10.1007/s11894-010-0129-9](#)]
  - 90 **Wedel T**, Roblick UJ, Ott V, Eggers R, Schiedeck TH, Krammer HJ, Bruch HP. Oligoneuronal hypoganglionosis in patients with idiopathic slow-transit constipation. *Dis Colon Rectum* 2002; **45**: 54-62 [PMID: [11786765](#) DOI: [10.1007/s10350-004-6114-3](#)]
  - 91 **Liang C**, Wang KY, Yu Z, Xu B. Development of a novel mouse constipation model. *World J Gastroenterol* 2016; **22**: 2799-2810 [PMID: [26973418](#) DOI: [10.3748/wjg.v22.i9.2799](#)]
  - 92 **Liang C**, Wang K, Xu B, Yu Z. Electroacupuncture at acupoint ST 37(Shangjuxu) improves function of the enteric nervous system in a novel mouse constipation model. *BMC Complement Altern Med* 2016; **16**: 392 [PMID: [27756367](#) DOI: [10.1186/s12906-016-1377-5](#)]
  - 93 **Yarandi SS**, Srinivasan S. Diabetic gastrointestinal motility disorders and the role of enteric nervous system: current status and future directions. *Neurogastroenterol Motil* 2014; **26**: 611-624 [PMID: [24661628](#) DOI: [10.1111/nmo.12330](#)]
  - 94 **Du F**, Wang L, Qian W, Liu S. Loss of enteric neurons accompanied by decreased expression of GDNF and PI3K/Akt pathway in diabetic rats. *Neurogastroenterol Motil* 2009; **21**: 1229-e114 [PMID: [19709371](#) DOI: [10.1111/j.1365-2982.2009.01379.x](#)]
  - 95 **Takahashi T**. Pathophysiological significance of neuronal nitric oxide synthase in the gastrointestinal tract. *J Gastroenterol* 2003; **38**: 421-430 [PMID: [12768383](#) DOI: [10.1007/s00535-003-1094-y](#)]
  - 96 **Yoneda S**, Kadowaki M, Kuramoto H, Fukui H, Takaki M. Enhanced colonic peristalsis by impairment of nitrergic enteric neurons in spontaneously diabetic rats. *Auton Neurosci* 2001; **92**: 65-71 [PMID: [11570705](#) DOI: [10.1016/S1566-0702\(01\)00317-4](#)]
  - 97 **Du F**, Liu S. Electroacupuncture with high frequency at acupoint ST-36 induces regeneration of lost enteric neurons in diabetic rats via GDNF and PI3K/AKT signal pathway. *Am J Physiol Regul Integr Comp Physiol* 2015; **309**: R109-R118 [PMID: [25972459](#) DOI: [10.1152/ajpregu.00396.2014](#)]
  - 98 **Kestler C**, Neuhauser WL, Raab M. Distribution of P2X(3) receptor immunoreactivity in myenteric ganglia of the mouse esophagus. *Histochem Cell Biol* 2009; **131**: 13-27 [PMID: [18810483](#) DOI: [10.1007/s00418-008-0498-4](#)]
  - 99 **Poole DP**, Castellucci P, Robbins HL, Chiochetti R, Furness JB. The distribution of P2X3 purine receptor subunits in the guinea pig enteric nervous system. *Auton Neurosci* 2002; **101**: 39-47 [PMID: [12462358](#)]



- DOI: [10.1016/s1566-0702\(02\)00179-0](https://doi.org/10.1016/s1566-0702(02)00179-0)
- 100 **Bian X**, Ren J, DeVries M, Schnegelsberg B, Cockayne DA, Ford AP, Galligan JJ. Peristalsis is impaired in the small intestine of mice lacking the P2X3 subunit. *J Physiol* 2003; **551**: 309-322 [PMID: [12813150](https://pubmed.ncbi.nlm.nih.gov/12813150/) DOI: [10.1113/jphysiol.2003.044172](https://doi.org/10.1113/jphysiol.2003.044172)]
  - 101 **Devries MP**, Vessalo M, Galligan JJ. Deletion of P2X2 and P2X3 receptor subunits does not alter motility of the mouse colon. *Front Neurosci* 2010; **4**: 22 [PMID: [20582262](https://pubmed.ncbi.nlm.nih.gov/20582262/) DOI: [10.3389/fnnt.2010.00001](https://doi.org/10.3389/fnnt.2010.00001)]
  - 102 **Kunze WA**, Furness JB. The enteric nervous system and regulation of intestinal motility. *Annu Rev Physiol* 1999; **61**: 117-142 [PMID: [10099684](https://pubmed.ncbi.nlm.nih.gov/10099684/) DOI: [10.1146/annurev.physiol.61.1.117](https://doi.org/10.1146/annurev.physiol.61.1.117)]
  - 103 **Shinoda M**, Feng B, Gebhart GF. Peripheral and central P2X receptor contributions to colon mechanosensitivity and hypersensitivity in the mouse. *Gastroenterology* 2009; **137**: 2096-2104 [PMID: [19549524](https://pubmed.ncbi.nlm.nih.gov/19549524/) DOI: [10.1053/j.gastro.2009.06.048](https://doi.org/10.1053/j.gastro.2009.06.048)]
  - 104 **Wu IXY**, Wong CHL, Ho RST, Cheung WKW, Ford AC, Wu JCY, Mak ADP, Cramer H, Chung VCH. Acupuncture and related therapies for treating irritable bowel syndrome: overview of systematic reviews and network meta-analysis. *Therap Adv Gastroenterol* 2019; **12**: 1756284818820438 [PMID: [30719074](https://pubmed.ncbi.nlm.nih.gov/30719074/) DOI: [10.1177/1756284818820438](https://doi.org/10.1177/1756284818820438)]
  - 105 **Galligan JJ**. Enteric P2X receptors as potential targets for drug treatment of the irritable bowel syndrome. *Br J Pharmacol* 2004; **141**: 1294-1302 [PMID: [15051631](https://pubmed.ncbi.nlm.nih.gov/15051631/) DOI: [10.1038/sj.bjp.0705761](https://doi.org/10.1038/sj.bjp.0705761)]
  - 106 **Weng ZJ**, Wu LY, Zhou CL, Dou CZ, Shi Y, Liu HR, Wu HG. Effect of electroacupuncture on P2X3 receptor regulation in the peripheral and central nervous systems of rats with visceral pain caused by irritable bowel syndrome. *Purinergic Signal* 2015; **11**: 321-329 [PMID: [25809868](https://pubmed.ncbi.nlm.nih.gov/25809868/) DOI: [10.1007/s11302-015-9447-6](https://doi.org/10.1007/s11302-015-9447-6)]
  - 107 **Arbogast LA**, Ben-Jonathan N. Tyrosine hydroxylase in the stalk-median eminence and posterior pituitary is inactivated only during the plateau phase of the preovulatory prolactin surge. *Endocrinology* 1989; **125**: 667-674 [PMID: [2568925](https://pubmed.ncbi.nlm.nih.gov/2568925/) DOI: [10.1172/JCI176303](https://doi.org/10.1172/JCI176303)]
  - 108 **Bush TG**, Savidge TC, Freeman TC, Cox HJ, Campbell EA, Mucke L, Johnson MH, Sofroniew MV. Fulminant jejuno-ileitis following ablation of enteric glia in adult transgenic mice. *Cell* 1998; **93**: 189-201 [PMID: [9568712](https://pubmed.ncbi.nlm.nih.gov/9568712/) DOI: [10.1016/s0092-8674\(00\)81571-8](https://doi.org/10.1016/s0092-8674(00)81571-8)]
  - 109 **Rao M**, Rastelli D, Dong L, Chiu S, Setlik W, Gershon MD, Corfas G. Enteric Glia Regulate Gastrointestinal Motility but Are Not Required for Maintenance of the Epithelium in Mice. *Gastroenterology* 2017; **153**: 1068-1081.e7 [PMID: [28711628](https://pubmed.ncbi.nlm.nih.gov/28711628/) DOI: [10.1053/j.gastro.2017.07.002](https://doi.org/10.1053/j.gastro.2017.07.002)]
  - 110 **Grubišić V**, Verkhatsky A, Zorec R, Parpura V. Enteric glia regulate gut motility in health and disease. *Brain Res Bull* 2018; **136**: 109-117 [PMID: [28363846](https://pubmed.ncbi.nlm.nih.gov/28363846/) DOI: [10.1016/j.brainresbull.2017.03.011](https://doi.org/10.1016/j.brainresbull.2017.03.011)]
  - 111 **Hierholzer C**, Kalff JC, Chakraborty A, Watkins SC, Billiar TR, Bauer AJ, Twardy DJ. Impaired gut contractility following hemorrhagic shock is accompanied by IL-6 and G-CSF production and neutrophil infiltration. *Dig Dis Sci* 2001; **46**: 230-241 [PMID: [11281168](https://pubmed.ncbi.nlm.nih.gov/11281168/) DOI: [10.1023/a:1005524021552](https://doi.org/10.1023/a:1005524021552)]
  - 112 **Du MH**, Luo HM, Tian YJ, Zhang LJ, Zhao ZK, Lv Y, Xu RJ, Hu S. Electroacupuncture ST36 prevents postoperative intra-abdominal adhesions formation. *J Surg Res* 2015; **195**: 89-98 [PMID: [25619463](https://pubmed.ncbi.nlm.nih.gov/25619463/) DOI: [10.1016/j.jss.2014.12.043](https://doi.org/10.1016/j.jss.2014.12.043)]
  - 113 **Du MH**, Luo HM, Hu S, Lv Y, Lin ZL, Ma L. Electroacupuncture improves gut barrier dysfunction in prolonged hemorrhagic shock rats through vagus anti-inflammatory mechanism. *World J Gastroenterol* 2013; **19**: 5988-5999 [PMID: [24106399](https://pubmed.ncbi.nlm.nih.gov/24106399/) DOI: [10.3748/wjg.v19.i36.5988](https://doi.org/10.3748/wjg.v19.i36.5988)]
  - 114 **Hu S**, Zhao ZK, Liu R, Wang HB, Gu CY, Luo HM, Wang H, Du MH, Lv Y, Shi X. Electroacupuncture activates enteric glial cells and protects the gut barrier in hemorrhaged rats. *World J Gastroenterol* 2015; **21**: 1468-1478 [PMID: [25663766](https://pubmed.ncbi.nlm.nih.gov/25663766/) DOI: [10.3748/wjg.v21.i5.1468](https://doi.org/10.3748/wjg.v21.i5.1468)]
  - 115 **Hu S**, Du MH, Luo HM, Wang H, Lv Y, Ma L, Lin ZL, Shi X, Gaischek I, Wang L, Litscher G. Electroacupuncture at Zusanli (ST36) Prevents Intestinal Barrier and Remote Organ Dysfunction following Gut Ischemia through Activating the Cholinergic Anti-Inflammatory-Dependent Mechanism. *Evid Based Complement Alternat Med* 2013; **2013**: 592127 [PMID: [23662144](https://pubmed.ncbi.nlm.nih.gov/23662144/) DOI: [10.1155/2013/592127](https://doi.org/10.1155/2013/592127)]
  - 116 **Gulbransen BD**, Sharkey KA. Novel functional roles for enteric glia in the gastrointestinal tract. *Nat Rev Gastroenterol Hepatol* 2012; **9**: 625-632 [PMID: [22890111](https://pubmed.ncbi.nlm.nih.gov/22890111/) DOI: [10.1038/nrgastro.2012.138](https://doi.org/10.1038/nrgastro.2012.138)]
  - 117 **Delvalle NM**, Fried DE, Rivera-Lopez G, Gaudette L, Gulbransen BD. Cholinergic activation of enteric glia is a physiological mechanism that contributes to the regulation of gastrointestinal motility. *Am J Physiol Gastrointest Liver Physiol* 2018; **315**: G473-G483 [PMID: [29927320](https://pubmed.ncbi.nlm.nih.gov/29927320/) DOI: [10.1152/ajpgi.00155.2018](https://doi.org/10.1152/ajpgi.00155.2018)]
  - 118 **Lee CH**, Jung HS, Lee TY, Lee SR, Yuk SW, Lee KG, Lee BH. Studies of the central neural pathways to the stomach and Zusanli (ST36). *Am J Chin Med* 2001; **29**: 211-220 [PMID: [11527064](https://pubmed.ncbi.nlm.nih.gov/11527064/) DOI: [10.1142/S0192415X01000241](https://doi.org/10.1142/S0192415X01000241)]
  - 119 **Wang X**, Shi H, Shang H, He W, Chen S, Litscher G, Gaischek I, Jing X. Effect of Electroacupuncture at ST36 on Gastric-Related Neurons in Spinal Dorsal Horn and Nucleus Tractus Solitarius. *Evid Based Complement Alternat Med* 2013; **2013**: 912898 [PMID: [24191172](https://pubmed.ncbi.nlm.nih.gov/24191172/) DOI: [10.1155/2013/912898](https://doi.org/10.1155/2013/912898)]
  - 120 **Babic T**, Browning KN, Travagli RA. Differential organization of excitatory and inhibitory synapses within the rat dorsal vagal complex. *Am J Physiol Gastrointest Liver Physiol* 2011; **300**: G21-G32 [PMID: [20947702](https://pubmed.ncbi.nlm.nih.gov/20947702/) DOI: [10.1152/ajpgi.00363.2010](https://doi.org/10.1152/ajpgi.00363.2010)]
  - 121 **Browning KN**, Travagli RA. Short-term receptor trafficking in the dorsal vagal complex: an overview. *Auton Neurosci* 2006; **126-127**: 2-8 [PMID: [16580267](https://pubmed.ncbi.nlm.nih.gov/16580267/) DOI: [10.1016/j.autneu.2006.01.019](https://doi.org/10.1016/j.autneu.2006.01.019)]
  - 122 **Travagli RA**, Anselmi L. Vagal neurocircuitry and its influence on gastric motility. *Nat Rev Gastroenterol Hepatol* 2016; **13**: 389-401 [PMID: [27251213](https://pubmed.ncbi.nlm.nih.gov/27251213/) DOI: [10.1038/nrgastro.2016.76](https://doi.org/10.1038/nrgastro.2016.76)]
  - 123 **Wang JJ**, Ming Q, Liu XD, Huang YX, Chen LW, Qiu JY, Duan L, Cao R, Rao ZR. Electro-acupuncture of Foot YangMing regulates gastric activity possibly through mediation of the dorsal vagal complex. *Am J Chin Med* 2007; **35**: 455-464 [PMID: [17597504](https://pubmed.ncbi.nlm.nih.gov/17597504/) DOI: [10.1142/S0192415X07004977](https://doi.org/10.1142/S0192415X07004977)]
  - 124 **Wang H**, Wang CY, Zhang JS, Sun L, Sun JP, Tian QH, Jin XL, Yin L. Acupuncture therapy for experimental stomach ulcer and c-Fos expression in rats. *World J Gastroenterol* 2005; **11**: 5517-5520 [PMID: [16222746](https://pubmed.ncbi.nlm.nih.gov/16222746/) DOI: [10.3748/wjg.v11.i35.5517](https://doi.org/10.3748/wjg.v11.i35.5517)]
  - 125 **Liu JH**, Li J, Yan J, Chang XR, Cui RF, He JF, Hu JM. Expression of c-fos in the nucleus of the solitary tract following electroacupuncture at facial acupoints and gastric distension in rats. *Neurosci Lett* 2004; **366**: 215-219 [PMID: [15276250](https://pubmed.ncbi.nlm.nih.gov/15276250/) DOI: [10.1016/j.neulet.2004.05.068](https://doi.org/10.1016/j.neulet.2004.05.068)]
  - 126 **Wang H**, Shen GM, Liu WJ, Huang S, Zhang MT. The Neural Mechanism by Which the Dorsal Vagal Complex Mediates the Regulation of the Gastric Motility by Weishu (RN12) and Zhongwan (BL21) Stimulation. *Evid Based Complement Alternat Med* 2013; **2013**: 291764 [PMID: [23843870](https://pubmed.ncbi.nlm.nih.gov/23843870/) DOI: [10.1155/2013/291764](https://doi.org/10.1155/2013/291764)]
  - 127 **Lim HD**, Kim MH, Lee CY, Namgung U. Anti-Inflammatory Effects of Acupuncture Stimulation via the

- Vagus Nerve. *PLoS One* 2016; **11**: e0151882 [PMID: 26991319 DOI: 10.1371/journal.pone.0151882]
- 128 **Wang JJ**, Liu XD, Qin M, Chen LW, Qiu JY, Duan L, Cao R, Rao ZR, Huang YX. Electro-acupuncture of Tsusanli and Shangchuhu regulates gastric activity possibly through mediation of the vagus-solitary complex. *Hepatogastroenterology* 2007; **54**: 1862-1867 [PMID: 18019736]
  - 129 **Furness JB**. Integrated Neural and Endocrine Control of Gastrointestinal Function. *Adv Exp Med Biol* 2016; **891**: 159-173 [PMID: 27379644 DOI: 10.1007/978-3-319-27592-5\_16]
  - 130 **Aziz Q**, Thompson DG. Brain-gut axis in health and disease. *Gastroenterology* 1998; **114**: 559-578 [PMID: 9496948 DOI: 10.1016/S0016-5085(98)70540-2]
  - 131 **Shen GM**, Zhou MQ, Xu GS, Xu Y, Yin G. Role of vasoactive intestinal peptide and nitric oxide in the modulation of electroacupuncture on gastric motility in stressed rats. *World J Gastroenterol* 2006; **12**: 6156-6160 [PMID: 17036387 DOI: 10.3748/wjg.v12.i38.6156]
  - 132 **Jang JH**, Lee DJ, Bae CH, Ha KT, Kwon S, Park HJ, Hahm DH, Lee H, Kim S. Changes in small intestinal motility and related hormones by acupuncture stimulation at Zusanli (ST 36) in mice. *Chin J Integr Med* 2017; **23**: 215-220 [PMID: 27586472 DOI: 10.1007/s11655-016-2609-8]
  - 133 **Liu JH**, Yan J, Yi SX, Chang XR, Lin YP, Hu JM. Effects of electroacupuncture on gastric myoelectric activity and substance P in the dorsal vagal complex of rats. *Neurosci Lett* 2004; **356**: 99-102 [PMID: 14746873 DOI: 10.1016/j.neulet.2003.11.044]
  - 134 **Allen NJ**, Lyons DA. Glia as architects of central nervous system formation and function. *Science* 2018; **362**: 181-185 [PMID: 30309945 DOI: 10.1126/science.aat0473]
  - 135 **Choi DC**, Lee JY, Lim EJ, Baik HH, Oh TH, Yune TY. Inhibition of ROS-induced p38MAPK and ERK activation in microglia by acupuncture relieves neuropathic pain after spinal cord injury in rats. *Exp Neurol* 2012; **236**: 268-282 [PMID: 22634758 DOI: 10.1016/j.expneurol.2012.05.014]
  - 136 **Zhang F**, Wu L, Zhao J, Lv T, Hu Z, Weng Z, Wang S, Wu H, Liu H. Neurobiological Mechanism of Acupuncture for Relieving Visceral Pain of Gastrointestinal Origin. *Gastroenterol Res Pract* 2017; **2017**: 5687496 [PMID: 28243252 DOI: 10.1155/2017/5687496]
  - 137 **Shan S**, Qi-Liang MY, Hong C, Tingting L, Mei H, Haili P, Yan-Qing W, Zhi-Qi Z, Yu-Qiu Z. Is functional state of spinal microglia involved in the anti-allodynic and anti-hyperalgesic effects of electroacupuncture in rat model of monoarthritis? *Neurobiol Dis* 2007; **26**: 558-568 [PMID: 17442579 DOI: 10.1016/j.nbd.2007.02.007]
  - 138 **Wang SZ**, Liu XD, Huang YX, Ma QJ, Wang JJ. Disruption of glial function regulates the effects of electro-acupuncture at Tsusanli on gastric activity in rats. *Am J Chin Med* 2009; **37**: 647-656 [PMID: 19655404 DOI: 10.1142/S0192415X090007132]
  - 139 **He JF**, Yan J, Li JS, Liu JH, Wang C, Chang XR, Qu YT. Neuron discharge and c-Fos expression in the nucleus of the solitary tract following electroacupuncture at acupoints of the Yangming Stomach Meridian of Foot. *J Acupunct Meridian Stud* 2013; **6**: 82-88 [PMID: 23591003 DOI: 10.1016/j.jams.2012.12.002]
  - 140 **Fang JF**, Du JY, Shao XM, Fang JQ, Liu Z. Effect of Electroacupuncture on the NTS is modulated primarily by acupuncture point selection and stimulation frequency in normal rats. *BMC Complement Altern Med* 2017; **17**: 182 [PMID: 28359336 DOI: 10.1186/s12906-017-1690-7]
  - 141 **He J**, Yan J, Chang X, Liu J, Li J, Yi S, Lin Y. Neurons in the NTS of rat response to gastric distention stimulation and acupuncture at body surface points. *Am J Chin Med* 2006; **34**: 427-433 [PMID: 16710892 DOI: 10.1142/S0192415X06003965]
  - 142 **Sun HZ**, Zhao SZ, Cui XY, Ai HB. Hindbrain Effects of L-Glutamate on Gastric Motility in Rats. *Gastroenterology Res* 2009; **2**: 43-47 [PMID: 27956950 DOI: 10.4021/gr2009.02.1274]
  - 143 **Krowicki ZK**, Nathan NA, Hornby PJ. Opposing effects of vasoactive intestinal polypeptide on gastric motor function in the dorsal vagal complex and the nucleus raphe obscurus of the rat. *J Pharmacol Exp Ther* 1997; **282**: 14-22 [PMID: 9223535]
  - 144 **Rogers RC**, Hermann GE, Travagli RA. Brainstem pathways responsible for oesophageal control of gastric motility and tone in the rat. *J Physiol* 1999; **514**: 369-383 [PMID: 9852320 DOI: 10.1111/j.1469-7793.1999.369ae.x]
  - 145 **Cruz MT**, Murphy EC, Sahibzada N, Verbalis JG, Gillis RA. A reevaluation of the effects of stimulation of the dorsal motor nucleus of the vagus on gastric motility in the rat. *Am J Physiol Regul Integr Comp Physiol* 2007; **292**: R291-R307 [PMID: 16990483 DOI: 10.1152/ajpregu.00863.2005]
  - 146 **Sivarao DV**, Krowicki ZK, Hornby PJ. Role of GABAA receptors in rat hindbrain nuclei controlling gastric motor function. *Neurogastroenterol Motil* 1998; **10**: 305-313 [PMID: 9697105 DOI: 10.1046/j.1365-2982.1998.00110.x]
  - 147 **Washabau RJ**, Fudge M, Price WJ, Barone FC. GABA receptors in the dorsal motor nucleus of the vagus influence feline lower esophageal sphincter and gastric function. *Brain Res Bull* 1995; **38**: 587-594 [PMID: 8590083 DOI: 10.1016/0361-9230(95)02038-7]
  - 148 **Zanzinger J**, Czachurski J, Sellar H. Inhibition of basal and reflex-mediated sympathetic activity in the RVLM by nitric oxide. *Am J Physiol* 1995; **268**: R958-R962 [PMID: 7733407 DOI: 10.1152/ajpregu.1995.268.4.R958]
  - 149 **Oshima N**, McMullan S, Goodchild AK, Pilowsky PM. A monosynaptic connection between baroinhibited neurons in the RVLM and IML in Sprague-Dawley rats. *Brain Res* 2006; **1089**: 153-161 [PMID: 16650389 DOI: 10.1016/j.brainres.2006.03.024]
  - 150 **Takahashi T**. Mechanism of acupuncture on neuromodulation in the gut—a review. *Neuromodulation* 2011; **14**: 8-12; discussion 12 [PMID: 21992155 DOI: 10.1111/j.1525-1403.2010.00295.x]
  - 151 **Shafton AD**, Ryan A, McGrath B, Badoer E. Volume expansion does not activate neuronal projections from the NTS or depressor VLM to the RVLM. *Am J Physiol* 1999; **277**: R39-R46 [PMID: 10409256 DOI: 10.1152/ajpregu.1999.277.1.R39]
  - 152 **Ma SM**, Yan CQ, Wu RH, Shen ZW, Fan H, Li JL, Liu CZ. [Feasibility of lower spinal cord functional MRI in neural conduction study following electrical stimulation at Tianshu (ST25) acupoint and Zusanli (ST36) acupoint]. *Shi Zhen Guo Yi Guo Yao* 2019; **30**: 217-219 [DOI: 10.3969/j.issn.1008-0805.2019.01.077]
  - 153 **Li B**, Zhu JN, Wang JJ. Histaminergic afferent system in the cerebellum: structure and function. *Cerebellum Ataxias* 2014; **1**: 5 [PMID: 26331029 DOI: 10.1186/2053-8871-1-5]
  - 154 **Zhang XY**, Wang JJ, Zhu JN. Cerebellar fastigial nucleus: from anatomic construction to physiological functions. *Cerebellum Ataxias* 2016; **3**: 9 [PMID: 27144010 DOI: 10.1186/s40673-016-0047-1]
  - 155 **Zhu JN**, Zhang YP, Song YN, Wang JJ. Cerebellar interpositus nuclear and gastric vagal afferent inputs reach and converge onto glycemia-sensitive neurons of the ventromedial hypothalamic nucleus in rats. *Neurosci Res* 2004; **48**: 405-417 [PMID: 15041194 DOI: 10.1016/j.neures.2003.12.009]
  - 156 **Martner J**. Influences on colonic and small intestinal motility by the cerebellar fastigial nucleus. *Acta*



- Physiol Scand* 1975; **94**: 82-94 [PMID: [1155171](#) DOI: [10.1111/j.1748-1716.1975.tb05864.x](#)]
- 157 **Lisander B**, Martner J. Effects on gastric motility from the cerebellar fastigial nucleus. *Acta Physiol Scand* 1975; **94**: 368-377 [PMID: [1180081](#) DOI: [10.1111/j.1748-1716.1975.tb05896.x](#)]
- 158 **Martner J**. Cerebellar influences on autonomic mechanisms. An experimental study in the cat with special reference to the fastigial nucleus. *Acta Physiol Scand Suppl* 1975; **425**: 1-42 [PMID: [1058629](#)]
- 159 **Liang C**, Wang Y, Xu B, Yu Z. [Effect of acupuncture at different acupoints on electric activities of rat cerebellar fastigial nuclear]. *Zhongguo Zhong Xi Yi Jie He Za Zhi* 2015; **35**: 476-480 [PMID: [26043574](#)]
- 160 **Haines DE**, Dietrichs E, Mihailoff GA, McDonald EF. The cerebellar-hypothalamic axis: basic circuits and clinical observations. *Int Rev Neurobiol* 1997; **41**: 83-107 [PMID: [9378614](#) DOI: [10.1016/s0074-7742\(08\)60348-7](#)]
- 161 **Zhu JN**, Yung WH, Kwok-Chong Chow B, Chan YS, Wang JJ. The cerebellar-hypothalamic circuits: potential pathways underlying cerebellar involvement in somatic-visceral integration. *Brain Res Rev* 2006; **52**: 93-106 [PMID: [16497381](#) DOI: [10.1016/j.brainresrev.2006.01.003](#)]
- 162 **Li Y**, Zhang X, Chen L, Yang B, Sui R. Cerebellar fastigial nucleus is involved in post-stroke depression through direct cerebellar-hypothalamic GABAergic and glutamatergic projections. *Exp Ther Med* 2019; **18**: 2885-2892 [PMID: [31555378](#) DOI: [10.3892/etm.2019.7913](#)]
- 163 **Zhu JZ**, Fei SJ, Zhang JF, Zhu SP, Liu ZB, Li TT, Qiao X. Lateral hypothalamic area mediated the aggravated effect of microinjection of Baclofen into cerebellar fastigial nucleus on stress gastric mucosal damage in rats. *Neurosci Lett* 2012; **509**: 125-129 [PMID: [22240102](#) DOI: [10.1016/j.neulet.2011.12.057](#)]
- 164 **Zhang YP**, Ma C, Wen YQ, Wang JJ. Convergence of gastric vagal and cerebellar fastigial nuclear inputs on glycemia-sensitive neurons of lateral hypothalamic area in the rat. *Neurosci Res* 2003; **45**: 9-16 [PMID: [12507719](#) DOI: [10.1016/s0168-0102\(02\)00192-x](#)]
- 165 **Gao L**, Fei S, Qiao W, Zhang J, Xing H, Du D. Protective effect of chemical stimulation of cerebellar fastigial nucleus on stress gastric mucosal injury in rats. *Life Sci* 2011; **88**: 871-878 [PMID: [21419784](#) DOI: [10.1016/j.lfs.2011.03.008](#)]
- 166 **Zhu JZ**, Fei SJ, Zhang JF, Zhu SP, Liu ZB, Li TT, Qiao X. Muscimol microinjection into cerebellar fastigial nucleus exacerbates stress-induced gastric mucosal damage in rats. *Acta Pharmacol Sin* 2013; **34**: 205-213 [PMID: [23247592](#) DOI: [10.1038/aps.2012.152](#)]
- 167 **Qiao X**, Yang J, Fei SJ, Zhu JZ, Zhu SP, Liu ZB, Li TT, Zhang JF. Protective effect of histamine microinjected into cerebellar fastigial nucleus on stress gastric mucosal damage in rats. *Brain Res* 2015; **1629**: 351-360 [PMID: [26474912](#) DOI: [10.1016/j.brainres.2015.10.014](#)]
- 168 **Zhen LL**, Miao B, Chen YY, Su Z, Xu MQ, Fei S, Zhang J. Protective effect and mechanism of injection of glutamate into cerebellum fastigial nucleus on chronic visceral hypersensitivity in rats. *Life Sci* 2018; **203**: 184-192 [PMID: [29704480](#) DOI: [10.1016/j.lfs.2018.04.043](#)]
- 169 **Gao L**, Zhao H, Zhu T, Liu Y, Hu L, Liu Z, Huang H, Chen F, Deng Z, Chu D, Du D. The Regulatory Effects of Lateral Hypothalamus Area GABA<sub>B</sub> Receptor on Gastric Ischemia-Reperfusion Injury in Rats. *Front Physiol* 2017; **8**: 722 [PMID: [28983255](#) DOI: [10.3389/fphys.2017.00722](#)]
- 170 **Yu Z**, Wang Y, Liang C, Xu B. [Effects of acupuncture at "Zusanli" (ST 36) on sensitive neurons of gastric distention in LHA-FN circuit in rats]. *Zhongguo Zhen Jiu* 2016; **36**: 851-856 [PMID: [29231573](#) DOI: [10.13703/j.0255-2930.2016.08.018](#)]
- 171 **Gagliuso AH**, Chapman EK, Martinelli GP, Holstein GR. Vestibular neurons with direct projections to the solitary nucleus in the rat. *J Neurophysiol* 2019; **122**: 512-524 [PMID: [31166818](#) DOI: [10.1152/jn.00082.2019](#)]
- 172 **Ruggiero DA**, Mtui EP, Otake K, Anwar M. Vestibular afferents to the dorsal vagal complex: substrate for vestibular-autonomic interactions in the rat. *Brain Res* 1996; **743**: 294-302 [PMID: [9017258](#) DOI: [10.1016/s0006-8993\(96\)01099-2](#)]
- 173 **Balaban CD**, Beryozkin G. Vestibular nucleus projections to nucleus tractus solitarius and the dorsal motor nucleus of the vagus nerve: potential substrates for vestibular-autonomic interactions. *Exp Brain Res* 1994; **98**: 200-212 [PMID: [8050507](#) DOI: [10.1007/bf00228409](#)]
- 174 **Porter JD**, Balaban CD. Connections between the vestibular nuclei and brain stem regions that mediate autonomic function in the rat. *J Vestib Res* 1997; **7**: 63-76 [PMID: [9057160](#) DOI: [10.3233/VES-1997-7106](#)]
- 175 **Panteleev SS**, Aleksandrov VG, Bagaev VA, Busygina II, Liubashina OA. [The neurons of the medial vestibular nucleus initiating the relaxation of the rat's stomach wall]. *Aviakosm Ekolog Med* 1999; **33**: 15-19 [PMID: [10399549](#)]
- 176 **Liang C**, Wang Y, Xu B, Yu Z. Effect of acupuncture at three different acupoints on electrical activity of gastric distention-affected neurons in rat medial vestibular nucleus. *J Tradit Chin Med* 2018; **38**: 125-131 [DOI: [10.1016/j.jtcm.2018.02.002](#)]
- 177 **Ferguson AV**, Latchford KJ, Samson WK. The paraventricular nucleus of the hypothalamus - a potential target for integrative treatment of autonomic dysfunction. *Expert Opin Ther Targets* 2008; **12**: 717-727 [PMID: [18479218](#) DOI: [10.1517/14728222.12.6.717](#)]
- 178 **Rogers RC**, Hermann GE. Oxytocin, oxytocin antagonist, TRH, and hypothalamic paraventricular nucleus stimulation effects on gastric motility. *Peptides* 1987; **8**: 505-513 [PMID: [3116510](#) DOI: [10.1016/0196-9781\(87\)90017-9](#)]
- 179 **Jiang Y**, Coleman FH, Kopenhaver Doheny K, Travagli RA. Stress Adaptation Upregulates Oxytocin within Hypothalamo-Vagal Neurocircuits. *Neuroscience* 2018; **390**: 198-205 [PMID: [30176320](#) DOI: [10.1016/j.neuroscience.2018.08.021](#)]
- 180 **Taché Y**, Bonaz B. Corticotropin-releasing factor receptors and stress-related alterations of gut motor function. *J Clin Invest* 2007; **117**: 33-40 [PMID: [17200704](#) DOI: [10.1172/JCI30085](#)]
- 181 **Lewis MW**, Hermann GE, Rogers RC, Travagli RA. In vitro and in vivo analysis of the effects of corticotropin releasing factor on rat dorsal vagal complex. *J Physiol* 2002; **543**: 135-146 [PMID: [12181286](#) DOI: [10.1113/jphysiol.2002.019281](#)]
- 182 **Wang SJ**, Zhang JJ, Yang HY, Wang F, Li ST. Acupoint specificity on acupuncture regulation of hypothalamic-pituitary-adrenal cortex axis function. *BMC Complement Altern Med* 2015; **15**: 87 [PMID: [25887143](#) DOI: [10.1186/s12906-015-0625-4](#)]
- 183 **Rinaman L**. Postnatal development of hypothalamic inputs to the dorsal vagal complex in rats. *Physiol Behav* 2003; **79**: 65-70 [PMID: [12818710](#) DOI: [10.1016/s0031-9384\(03\)00105-7](#)]
- 184 **Flanagan LM**, Olson BR, Sved AF, Verbalis JG, Stricker EM. Gastric motility in conscious rats given oxytocin and an oxytocin antagonist centrally. *Brain Res* 1992; **578**: 256-260 [PMID: [1324762](#) DOI: [10.1016/0006-8993\(92\)90255-8](#)]
- 185 **Llewellyn-Smith IJ**, Kellett DO, Jordan D, Browning KN, Travagli RA. Oxytocin-immunoreactive

- innervation of identified neurons in the rat dorsal vagal complex. *Neurogastroenterol Motil* 2012; **24**: e136-e146 [PMID: 22188490 DOI: 10.1111/j.1365-2982.2011.01851.x]
- 186 **Holmes GM**, Browning KN, Babic T, Fortna SR, Coleman FH, Travagli RA. Vagal afferent fibres determine the oxytocin-induced modulation of gastric tone. *J Physiol* 2013; **591**: 3081-3100 [PMID: 23587885 DOI: 10.1113/jphysiol.2013.253732]
- 187 **Yong CY**, Chen S, Chen H, Chu X, Zhang C, Tan C, Ye L, Li JS. Effects of needling acupoints at different nerve segments on oxytocin neurons in rat's hypothalamic paraventricular nucleus and intragastric pressure. *J Acupunct Tuina Sci* 2019; **17**: 297-304 [DOI: 10.1007/s11726-019-1128-5]
- 188 **Yong CY**, Chen S, Chen H, Chu X, Zhang C, Tan C, Ye L, Li JS. Central neuromechanisms underlying control of intragastric pressure through acupuncture at Zusanli (ST36) in rats: the upper cervical cord is the key link between the ascending and descending pathways. *Neural Regen Res* 2016; **11**: 971-976 [PMID: 27482227 DOI: 10.4103/1673-5374.184497]
- 189 **Liu W**, Zhang C, Zhang Y, Ning J, Li J. [Effects of electroacupuncture at acupoints with different nerve segments on gastric emptying in OT gene knockout mice]. *Zhongguo Zhen Jiu* 2017; **37**: 735-740 [PMID: 29231547 DOI: 10.13703/j.0255-2930.2017.07.015]
- 190 **Wang H**, Liu WJ, Shen GM, Zhang MT, Huang S, He Y. Neural mechanism of gastric motility regulation by electroacupuncture at RN12 and BL21: A paraventricular hypothalamic nucleus-dorsal vagal complex-vagus nerve-gastric channel pathway. *World J Gastroenterol* 2015; **21**: 13480-13489 [PMID: 26730159 DOI: 10.3748/wjg.v21.i48.13480]
- 191 **Jansen AS**, Hoffman JL, Loewy AD. CNS sites involved in sympathetic and parasympathetic control of the pancreas: a viral tracing study. *Brain Res* 1997; **766**: 29-38 [PMID: 9359584 DOI: 10.1016/s0006-8993(97)00532-5]
- 192 **Jiang C**, Fogel R, Zhang X. Lateral hypothalamus modulates gut-sensitive neurons in the dorsal vagal complex. *Brain Res* 2003; **980**: 31-47 [PMID: 12865157 DOI: 10.1016/s0006-8993(03)02844-0]
- 193 **Berk ML**. Projections of the lateral hypothalamus and bed nucleus of the stria terminalis to the dorsal vagal complex in the pigeon. *J Comp Neurol* 1987; **260**: 140-156 [PMID: 3597832 DOI: 10.1002/cne.902600111]
- 194 **Gong Y**, Liu Y, Guo Y, Su M, Zhong Y, Xu L, Guo F, Gao S. Ghrelin projection from the lateral hypothalamus area to the dorsal vagal complex and its regulation of gastric motility in cisplatin-treated rats. *Neuropeptides* 2017; **66**: 69-80 [PMID: 28985965 DOI: 10.1016/j.npep.2017.09.003]
- 195 **Gong Y**, Liu Y, Liu F, Wang S, Jin H, Guo F, Xu L. Ghrelin fibers from lateral hypothalamus project to nucleus tractus solitarius and are involved in gastric motility regulation in cisplatin-treated rats. *Brain Res* 2017; **1659**: 29-40 [PMID: 28093190 DOI: 10.1016/j.brainres.2017.01.004]
- 196 **Liu Y**, Yan M, Guo Y, Niu Z, Sun R, Jin H, Gong Y. Ghrelin and electrical stimulating the lateral hypothalamus area regulated the discharges of gastric distention neurons via the dorsal vagal complex in cisplatin-treated rats. *Gen Comp Endocrinol* 2019; **279**: 174-183 [PMID: 30914266 DOI: 10.1016/j.ygcen.2019.03.014]
- 197 **Sessenwein JL**, Lomax AE. Ghrelin receptors as targets for novel motility drugs. *Neurogastroenterol Motil* 2015; **27**: 589-593 [PMID: 25903396 DOI: 10.1111/nmo.12562]
- 198 **Colldén G**, Tschöp MH, Müller TD. Therapeutic Potential of Targeting the Ghrelin Pathway. *Int J Mol Sci* 2017; **18**: 798 [PMID: 28398233 DOI: 10.3390/ijms18040798]
- 199 **Wu H**, Chen X. [Effect of electro-acupuncture of zusanli on unit discharges in the lateral hypothalamic area induced by stomach distension]. *Zhen Ci Yan Jiu* 1990; **15**: 194-196 [PMID: 2125878 DOI: 10.13702/j.1000-0607.1990.03.009]
- 200 **Liu Z**, Sun F, Han Y. [Effect of acupuncture on level of monoamines and activity of adenosine triphosphatase in lateral hypothalamic area of obese rats]. *Zhongguo Zhong Xi Yi Jie He Za Zhi* 2000; **20**: 521-523 [PMID: 11789211]
- 201 **Yu Z**, Xia Y, Ju C, Shao Q, Mao Z, Gu Y, Xu B. Electroacupuncture regulates glucose-inhibited neurons in treatment of simple obesity. *Neural Regen Res* 2013; **8**: 809-816 [PMID: 25206728 DOI: 10.3969/j.issn.1673-5374.2013.09.005]
- 202 **Wang WG**, Chen X, Jiang H, Jiang ZY. Effects of ghrelin on glucose-sensing and gastric distension sensitive neurons in rat dorsal vagal complex. *Regul Pept* 2008; **146**: 169-175 [PMID: 17913259 DOI: 10.1016/j.regpep.2007.09.007]
- 203 **Alamri BN**, Shin K, Chappé V, Anini Y. The role of ghrelin in the regulation of glucose homeostasis. *Horm Mol Biol Clin Investig* 2016; **26**: 3-11 [PMID: 27235674 DOI: 10.1515/hmbci-2016-0018]
- 204 **Hong SH**, Ding SS, Wu F, Bi Y, Xu F, Wan YJ, Xuan LH. Efficacy and safety of manual acupuncture manipulations with different frequencies on epigastric pain syndrome (EPS) in functional dyspepsia (FD) patients: study protocol for a randomized controlled trial. *Trials* 2017; **18**: 102 [PMID: 28264722 DOI: 10.1186/s13063-017-1845-3]
- 205 **Han G**, Ko SJ, Park JW, Kim J, Yeo I, Lee H, Kim SY, Lee H. Acupuncture for functional dyspepsia: study protocol for a two-center, randomized controlled trial. *Trials* 2014; **15**: 89 [PMID: 24655542 DOI: 10.1186/1745-6215-15-89]
- 206 **Güçel F**, Bahar B, Demirtas C, Mit S, Cevik C. Influence of acupuncture on leptin, ghrelin, insulin and cholecystokinin in obese women: a randomised, sham-controlled preliminary trial. *Acupunct Med* 2012; **30**: 203-207 [PMID: 22729015 DOI: 10.1136/acupmed-2012-010127]
- 207 **Grundmann O**, Yoon SL, Williams JJ, Gordan L, George TJ Jr. Augmentation of Cancer Cachexia Components With Targeted Acupuncture in Patients With Gastrointestinal Cancers: A Randomized Controlled Pilot Study. *Integr Cancer Ther* 2019; **18**: 1534735418823269 [PMID: 30791747 DOI: 10.1177/1534735418823269]
- 208 **Chronwall BM**. Anatomy and physiology of the neuroendocrine arcuate nucleus. *Peptides* 1985; **6** Suppl 2: 1-11 [PMID: 2417205 DOI: 10.1016/0196-9781(85)90128-7]
- 209 **Blevins JE**, Baskin DG. Hypothalamic-brainstem circuits controlling eating. *Forum Nutr* 2010; **63**: 133-140 [PMID: 19955781 DOI: 10.1159/000264401]
- 210 **DeFalco J**, Tomishima M, Liu H, Zhao C, Cai X, Marth JD, Enquist L, Friedman JM. Virus-assisted mapping of neural inputs to a feeding center in the hypothalamus. *Science* 2001; **291**: 2608-2613 [PMID: 11283374 DOI: 10.1126/science.1056602]
- 211 **Tebbe JJ**, Pasat IR, Mönnikes H, Ritter M, Kobelt P, Schäfer MK. Excitatory stimulation of neurons in the arcuate nucleus initiates central CRF-dependent stimulation of colonic propulsion in rats. *Brain Res* 2005; **1036**: 130-138 [PMID: 15725410 DOI: 10.1016/j.brainres.2004.12.034]
- 212 **Ma R**, Zhang JX, Xu GR, Qian XJ. Effect of Stimulation of Hypothalamic of Arcuate Nucleus on Intragastric Pressure of Rat. *Acta Universitatis Medicinalis Anhui* 1989; **1**: 6-8 [DOI: 10.1111/j.1365-2982.2011.01851.x]

- 10.19405/j.cnki.issn1000-1492.1989.01.003]
- 213 **Tebbe JJ**, Dietze T, Grote C, Mönnikes H. Excitatory stimulation of neurons in the arcuate nucleus inhibits gastric acid secretion via vagal pathways in anesthetized rats. *Brain Res* 2001; **913**: 10-17 [PMID: 11532242 DOI: 10.1016/s0006-8993(01)02746-9]
- 214 **Zhao ZQ**. Neural mechanism underlying acupuncture analgesia. *Prog Neurobiol* 2008; **85**: 355-375 [PMID: 18582529 DOI: 10.1016/j.pneurobio.2008.05.004]
- 215 **Zhang F**, Feng Y, Zhou R, Zhang YQ, Chen BY. [Observation on the central afferent pathway of "Guanyuan" (CV 4) under normal and pathological states and the influence of electroacupuncture]. *Zhen Ci Yan Jiu* 2008; **33**: 147-153 [PMID: 18807714 DOI: 10.13702/j.1000-0607.2008.03.002]
- 216 **Guo Z**, Lin X, Samaniego T, Isreb A, Cao S, Malik S, Holmes TC, Xu X. Fos-CreER-based genetic mapping of forebrain regions activated by acupuncture. *J Comp Neurol* 2020; **528**: 953-971 [PMID: 31600836 DOI: 10.1002/cne.24789]
- 217 **Zhang XD**, Zheng XZ. [The study of the relationship between the regulation of electroacupuncture on electrogastrography of rabbits and ARC]. *Mudanjiang Yi Xue Yuan Xue Bao* 2001; **22**: 5-7 [DOI: 10.13799/j.cnki.mdjyxyxb.2001.01.003]
- 218 **Fei Wang**, Tian DR, Tso P, Han JS. Arcuate nucleus of hypothalamus is involved in mediating the satiety effect of electroacupuncture in obese rats. *Peptides* 2011; **32**: 2394-2399 [PMID: 22064014 DOI: 10.1016/j.peptides.2011.10.019]
- 219 **Lee JD**, Jang MH, Kim EH, Kim CJ. Acupuncture decreases neuropeptide Y expression in the hypothalamus of rats with Streptozotocin-induced diabetes. *Acupunct Electrother Res* 2004; **29**: 73-82 [PMID: 15382790 DOI: 10.3727/036012904815901533]
- 220 **Tian DR**, Li XD, Wang F, Niu DB, He QH, Li YS, Chang JK, Yang J, Han JS. Up-regulation of the expression of cocaine and amphetamine-regulated transcript peptide by electroacupuncture in the arcuate nucleus of diet-induced obese rats. *Neurosci Lett* 2005; **383**: 17-21 [PMID: 15885905 DOI: 10.1016/j.neulet.2005.03.039]
- 221 **Larsen PJ**, Hunter RG. The role of CART in body weight homeostasis. *Peptides* 2006; **27**: 1981-1986 [PMID: 16762453 DOI: 10.1016/j.peptides.2005.11.027]
- 222 **Guan X**, Shi X, Li X, Chang B, Wang Y, Li D, Chan L. GLP-2 receptor in POMC neurons suppresses feeding behavior and gastric motility. *Am J Physiol Endocrinol Metab* 2012; **303**: E853-E864 [PMID: 22829581 DOI: 10.1152/ajpendo.00245.2012]



Published by Baishideng Publishing Group Inc  
7041 Koll Center Parkway, Suite 160, Pleasanton, CA 94566, USA  
Telephone: +1-925-3991568  
E-mail: [bpgoffice@wjgnet.com](mailto:bpgoffice@wjgnet.com)  
Help Desk: <http://www.f6publishing.com/helpdesk>  
<http://www.wjgnet.com>

