

# World Journal of *Gastroenterology*

*World J Gastroenterol* 2017 December 21; 23(47): 8263-8438



**REVIEW**

- 8263** Clinical epidemiology and disease burden of nonalcoholic fatty liver disease  
*Perumpail BJ, Khan MA, Yoo ER, Cholankeril G, Kim D, Ahmed A*

**MINIREVIEWS**

- 8277** Obese children with fatty liver: Between reality and disease mongering  
*Ranucci G, Spagnuolo MI, Iorio R*
- 8283** Procalcitonin in inflammatory bowel disease: Drawbacks and opportunities  
*Lippi G, Sanchis-Gomar F*

**ORIGINAL ARTICLE****Basic Study**

- 8291** Gene mutations in stool from gastric and colorectal neoplasia patients by next-generation sequencing  
*Youssef O, Sarhadi V, Ehsan H, Böhling T, Carpelan-Holmström M, Koskensalo S, Puolakkainen P, Kokkola A, Knuutila S*
- 8300** Polymorphisms in oxidative pathway related genes and susceptibility to inflammatory bowel disease  
*Senhaji N, Nadifi S, Zaid Y, Serrano A, Rodriguez DAL, Serbati N, Karkouri M, Badre W, Martín J*
- 8308** Effects of initiating time and dosage of *Panax notoginseng* on mucosal microvascular injury in experimental colitis  
*Wang SY, Tao P, Hu HY, Yuan JY, Zhao L, Sun BY, Zhang WJ, Lin J*
- 8321** Fructo-oligosaccharide intensifies visceral hypersensitivity and intestinal inflammation in a stress-induced irritable bowel syndrome mouse model  
*Chen BR, Du LJ, He HQ, Kim JJ, Zhao Y, Zhang YW, Luo L, Dai N*
- 8334** Morin enhances hepatic Nrf2 expression in a liver fibrosis rat model  
*Sang L, Wang XM, Xu DY, Sang LX, Han Y, Jiang LY*
- 8345** Circular RNA circ-LDLRAD3 as a biomarker in diagnosis of pancreatic cancer  
*Yang F, Liu DY, Guo JT, Ge N, Zhu P, Liu X, Wang S, Wang GX, Sun SY*

**Case Control Study**

- 8355** Rifaximin ameliorates hepatic encephalopathy and endotoxemia without affecting the gut microbiome diversity  
*Kaji K, Takaya H, Saikawa S, Furukawa M, Sato S, Kawaratan H, Kitade M, Moriya K, Namisaki T, Akahane T, Mitoro A, Yoshiji H*

**Retrospective Study**

- 8367 Association between white opaque substance under magnifying colonoscopy and lipid droplets in colorectal epithelial neoplasms  
*Kawasaki K, Eizuka M, Nakamura S, Endo M, Yanai S, Akasaka R, Toya Y, Fujita Y, Uesugi N, Ishida K, Sugai T, Matsumoto T*
- 8376 Nomogram based on tumor-associated neutrophil-to-lymphocyte ratio to predict survival of patients with gastric neuroendocrine neoplasms  
*Cao LL, Lu J, Lin JX, Zheng CH, Li P, Xie JW, Wang JB, Chen QY, Lin M, Tu RH, Huang CM*
- 8387 Impact of cigarette smoking on recurrence of hyperlipidemic acute pancreatitis  
*Xiang JX, Hu LS, Liu P, Tian BY, Su Q, Ji YC, Zhang XF, Liu XM, Wu Z, Lv Y*

**Clinical Trials Study**

- 8395 First-week clinical responses to dexlansoprazole 60 mg and esomeprazole 40 mg for the treatment of grades A and B gastroesophageal reflux disease  
*Liang CM, Kuo MT, Hsu PI, Kuo CH, Tai WC, Yang SC, Wu KL, Wang HM, Yao CC, Tsai CE, Wang YK, Wang JW, Huang CF, Wu DC, Chuah SK; Taiwan Acid-Related Disease Study Group*

**Observational Study**

- 8405 Rate of adverse events of gastroduodenal snare polypectomy for non-flat polyp is low: A prospective and multicenter study  
*Córdova H, Argüello L, Loras C, Naranjo Rodríguez A, Riu Pons F, Gornals JB, Nicolás-Pérez D, Andújar Murcia X, Hernández L, Santolaria S, Leal C, Pons C, Pérez-Cuadrado-Robles E, García-Bosch O, Papo Berger M, Ulla Rocha JL, Sánchez-Montes C, Fernández-Esparrach G*

**META-ANALYSIS**

- 8415 Chronic kidney disease severely deteriorates the outcome of gastrointestinal bleeding: A meta-analysis  
*Hägendorn R, Farkas N, Vincze Á, Gyöngyi Z, Csupor D, Bajor J, Erőss B, Csécei P, Vasas A, Szakács Z, Szapáry L, Hegyi P, Mikó A*

**CASE REPORT**

- 8426 Disabling portosystemic encephalopathy in a non-cirrhotic patient: Successful endovascular treatment of a giant inferior mesenteric-caval shunt *via* the left internal iliac vein  
*de Martinis L, Groppelli G, Corti R, Moramarco LP, Quaretti P, De Cata P, Rotondi M, Chiovato L*
- 8432 Wernicke encephalopathy in a patient after liver transplantation: A case report  
*Xie B, Si ZZ, Tang WT, Qi HZ, Li T*

**LETTERS TO THE EDITOR**

- 8437 Silymarin: An option to treat non-alcoholic fatty liver disease  
*Colica C, Boccuto L, Abenavoli L*

**ABOUT COVER**

Editorial board member of *World Journal of Gastroenterology*, Yoshihisa Takahashi, MD, Associate Professor, Department of Pathology, Teikyo University School of Medicine, Tokyo 173-8605, Japan

**AIMS AND SCOPE**

*World Journal of Gastroenterology* (*World J Gastroenterol*, *WJG*, print ISSN 1007-9327, online ISSN 2219-2840, DOI: 10.3748) is a peer-reviewed open access journal. *WJG* was established on October 1, 1995. It is published weekly on the 7<sup>th</sup>, 14<sup>th</sup>, 21<sup>st</sup>, and 28<sup>th</sup> each month. The *WJG* Editorial Board consists of 1375 experts in gastroenterology and hepatology from 68 countries.

The primary task of *WJG* is to rapidly publish high-quality original articles, reviews, and commentaries in the fields of gastroenterology, hepatology, gastrointestinal endoscopy, gastrointestinal surgery, hepatobiliary surgery, gastrointestinal oncology, gastrointestinal radiation oncology, gastrointestinal imaging, gastrointestinal interventional therapy, gastrointestinal infectious diseases, gastrointestinal pharmacology, gastrointestinal pathophysiology, gastrointestinal pathology, evidence-based medicine in gastroenterology, pancreatology, gastrointestinal laboratory medicine, gastrointestinal molecular biology, gastrointestinal immunology, gastrointestinal microbiology, gastrointestinal genetics, gastrointestinal translational medicine, gastrointestinal diagnostics, and gastrointestinal therapeutics. *WJG* is dedicated to become an influential and prestigious journal in gastroenterology and hepatology, to promote the development of above disciplines, and to improve the diagnostic and therapeutic skill and expertise of clinicians.

**INDEXING/ABSTRACTING**

*World Journal of Gastroenterology* (*WJG*) is now indexed in Current Contents<sup>®</sup>/Clinical Medicine, Science Citation Index Expanded (also known as SciSearch<sup>®</sup>), Journal Citation Reports<sup>®</sup>, Index Medicus, MEDLINE, PubMed, PubMed Central and Directory of Open Access Journals. The 2017 edition of Journal Citation Reports<sup>®</sup> cites the 2016 impact factor for *WJG* as 3.365 (5-year impact factor: 3.176), ranking *WJG* as 29<sup>th</sup> among 79 journals in gastroenterology and hepatology (quartile in category Q2).

**FLYLEAF**

**I-IX Editorial Board**

**EDITORS FOR THIS ISSUE**

**Responsible Assistant Editor:** Xiang Li  
**Responsible Electronic Editor:** Yan Huang  
**Proofing Editor-in-Chief:** Lian-Sheng Ma

**Responsible Science Editor:** Ze-Mao Gong  
**Proofing Editorial Office Director:** Jin-Lei Wang

**NAME OF JOURNAL**  
*World Journal of Gastroenterology*

**ISSN**  
ISSN 1007-9327 (print)  
ISSN 2219-2840 (online)

**LAUNCH DATE**  
October 1, 1995

**FREQUENCY**  
Weekly

**EDITORS-IN-CHIEF**  
**Damian Garcia-Olmo, MD, PhD, Doctor, Professor, Surgeon**, Department of Surgery, Universidad Autonoma de Madrid; Department of General Surgery, Fundacion Jimenez Diaz University Hospital, Madrid 28040, Spain

**Stephen C Strom, PhD, Professor**, Department of Laboratory Medicine, Division of Pathology, Karolinska Institutet, Stockholm 141-86, Sweden

**Andrzej S Tarnawski, MD, PhD, DSc (Med), Professor of Medicine, Chief Gastroenterology**, VA Long Beach Health Care System, University of California, Irvine, CA, 5901 E. Seventh Str., Long Beach,

CA 90822, United States

**EDITORIAL BOARD MEMBERS**  
All editorial board members resources online at <http://www.wjgnet.com/1007-9327/editorialboard.htm>

**EDITORIAL OFFICE**  
Jin-Lei Wang, Director  
Ze-Mao Gong, Vice Director  
*World Journal of Gastroenterology*  
Baishideng Publishing Group Inc  
7901 Stoneridge Drive, Suite 501,  
Pleasanton, CA 94588, USA  
Telephone: +1-925-2238242  
Fax: +1-925-2238243  
E-mail: [editorialoffice@wjgnet.com](mailto:editorialoffice@wjgnet.com)  
Help Desk: <http://www.f6publishing.com/helpdesk>  
<http://www.wjgnet.com>

**PUBLISHER**  
Baishideng Publishing Group Inc  
7901 Stoneridge Drive, Suite 501,  
Pleasanton, CA 94588, USA  
Telephone: +1-925-2238242  
Fax: +1-925-2238243  
E-mail: [bpoffice@wjgnet.com](mailto:bpoffice@wjgnet.com)  
Help Desk: <http://www.f6publishing.com/helpdesk>

<http://www.wjgnet.com>

**PUBLICATION DATE**  
December 21, 2017

**COPYRIGHT**  
© 2017 Baishideng Publishing Group Inc. Articles published by this Open-Access journal are distributed under the terms of the Creative Commons Attribution Non-commercial License, which permits use, distribution, and reproduction in any medium, provided the original work is properly cited, the use is non commercial and is otherwise in compliance with the license.

**SPECIAL STATEMENT**  
All articles published in journals owned by the Baishideng Publishing Group (BPG) represent the views and opinions of their authors, and not the views, opinions or policies of the BPG, except where otherwise explicitly indicated.

**INSTRUCTIONS TO AUTHORS**  
Full instructions are available online at <http://www.wjgnet.com/bpg/gerinfo/204>

**ONLINE SUBMISSION**  
<http://www.f6publishing.com>

## Basic Study

# Circular RNA circ-LDLRAD3 as a biomarker in diagnosis of pancreatic cancer

Fan Yang, Dong-Yan Liu, Jin-Tao Guo, Nan Ge, Ping Zhu, Xiang Liu, Sheng Wang, Guo-Xin Wang, Si-Yu Sun

Fan Yang, Jin-Tao Guo, Nan Ge, Ping Zhu, Xiang Liu, Sheng Wang, Guo-Xin Wang, Si-Yu Sun, Endoscopy Center, Shengjing Hospital of China Medical University, Shenyang 110004, Liaoning Province, China

Dong-Yan Liu, Medical Research Center, Shengjing Hospital of China Medical University, Benxi 117000, Liaoning Province, China

ORCID number: Fan Yang (0000-0002-5032-6450); Dong-Yan Liu (0000-0002-3902-9316); Jin-Tao Guo (0000-0001-5722-6359); Nan Ge (0000-0002-5764-7054); Ping Zhu (0000-0003-2959-3885); Xiang Liu (0000-0001-7538-6786); Sheng Wang (0000-0001-7194-9641); Guo-Xin Wang (0000-0002-5928-3370); Si-Yu Sun (0000-0002-7308-0473)

**Author contributions:** Yang F and Sun SY were involved in the study conception and design; Yang F drafted the article and analyzed and interpreted the data; Guo JT and Ge N performed critical revision of the article for important intellectual content and collected the data; Liu X performed statistical analysis; Zhu P and Wang S conducted the evaluation of TNM stage of pancreatic cancer; all authors performed the final approval of the article.

**Supported by** Natural Science Foundation of Liaoning Province, No. 20170541024; and the Shengjing Free Researcher Project Foundation, No. 200812.

**Institutional review board statement:** The study was reviewed and approved by the Ethics Committee of Shengjing Hospital of China Medical University (No. 2016PS277K).

**Informed consent statement:** All cancer specimen and blood samples from the patients and healthy volunteers were taken after informed written consent and ethical permission were obtained prior to study enrollment.

**Conflict-of-interest statement:** The authors have no conflicts of interest to declare.

**Data sharing statement:** No additional data are available for this study. All data are included in the paper itself.

**Open-Access:** This article is an open-access article which was selected by an in-house editor and fully peer-reviewed by external reviewers. It is distributed in accordance with the Creative Commons Attribution Non Commercial (CC BY-NC 4.0) license, which permits others to distribute, remix, adapt, build upon this work non-commercially, and license their derivative works on different terms, provided the original work is properly cited and the use is non-commercial. See: <http://creativecommons.org/licenses/by-nc/4.0/>

**Manuscript source:** Unsolicited manuscript

**Correspondence to:** Si-Yu Sun, MD, PhD, Chief, Professor, Endoscopy Center, Shengjing Hospital of China Medical University, No. 36, Sanhao Street, Shenyang 110004, Liaoning Province, China. [sun-siyu@163.com](mailto:sun-siyu@163.com)  
**Telephone:** +86-24-96615-26111  
**Fax:** +86-24-23892617

**Received:** November 3, 2017

**Peer-review started:** November 4, 2017

**First decision:** November 14, 2017

**Revised:** November 17, 2017

**Accepted:** November 27, 2017

**Article in press:** November 27, 2017

**Published online:** December 21, 2017

## Abstract

### AIM

To analyze the diagnostic value of a circular RNA (circRNA), circ-LDLRAD3, in pancreatic cancer.

### METHODS

Expression levels of circ-LDLRAD3 were tested in both cells and clinical samples; the latter included 30 paired pancreatic cancer tissues and adjacent non-tumorous tissues, 31 plasma samples from patients with pancreatic cancer, and 31 plasma samples from healthy volunteers. Real-time quantitative reverse transcription



polymerase chain reaction (qRT-PCR) was performed to measure expression levels of circ-LDLRAD3 in cells and clinical samples; then, the relationship between clinicopathological factors of patient samples and expression of circ-LDLRAD3 in pancreatic cancer was analyzed. The diagnostic value of circ-LDLRAD3 was verified by receiver operating characteristic (ROC) curve analysis.

## RESULTS

Circ-LDLRAD3 was up-regulated in pancreatic cancer cell lines ( $P < 0.01$ ), pancreatic cancer tissues ( $P < 0.01$ ), and plasma samples from patients with pancreatic cancer ( $P < 0.01$ ). High expression of circ-LDLRAD3 was significantly associated with venous invasion, lymphatic invasion, and metastasis. The area under the ROC curve of circ-LDLRAD3 alone or combination with CA19-9 was 0.67 and 0.87, respectively, with a sensitivity and specificity of 0.5738 (alone) and 0.7049 (alone), and 0.8033 (combination) and 0.9355 (combination), respectively.

## CONCLUSION

These data suggest that circ-LDLRAD3 may be a biomarker in the diagnosis of pancreatic cancer.

**Key words:** Circular RNA; Pancreatic cancer; Biomarker

© The Author(s) 2017. Published by Baishideng Publishing Group Inc. All rights reserved.

**Core tip:** Circular RNAs (circRNAs), a novel class of stable endogenous RNAs, play important roles in the occurrence and progression of cancer; however, little is known about their diagnostic value in pancreatic cancer. Our study focused on a novel circRNA, circ-LDLRAD3. Expression levels of circ-LDLRAD3 were tested in both cells and clinical samples, including tissue samples and plasma samples. Then, the relationship between clinicopathological factors of patient samples and expression of circ-LDLRAD3 in pancreatic cancer was analyzed. The diagnostic value of circ-LDLRAD3 was verified by ROC curve analysis. Our study suggests that circ-LDLRAD3 may be a new biomarker in the diagnosis of pancreatic cancer.

Yang F, Liu DY, Guo JT, Ge N, Zhu P, Liu X, Wang S, Wang GX, Sun SY. Circular RNA circ-LDLRAD3 as a biomarker in diagnosis of pancreatic cancer. *World J Gastroenterol* 2017; 23(47): 8345-8354 Available from: URL: <http://www.wjgnet.com/1007-9327/full/v23/i47/8345.htm> DOI: <http://dx.doi.org/10.3748/wjg.v23.i47.8345>

## INTRODUCTION

Pancreatic cancer is a malignancy of the digestive system with insidious onset and rapid development,

resulting in delayed and difficult early diagnoses and poor prognosis<sup>[1,2]</sup>. The incidence and mortality of pancreatic cancer are rising every year worldwide, and it is the 7<sup>th</sup> and 4<sup>th</sup> leading cause of mortality from all malignant tumors in China<sup>[3]</sup> and the United States<sup>[4]</sup>, respectively. Surgical resection remains the major means of treatment for pancreatic cancer; however, the 5-year survival rate for patients undergoing a complete resection remains as low as 6%<sup>[5]</sup>. The key to improving the prognosis of pancreatic cancer mostly lies in early diagnosis and early treatment, which can be achieved by detection of relevant molecular markers among patients with high risk, followed by early and timely interventions<sup>[6-8]</sup>.

Circular RNAs (circRNAs) are a class of noncoding RNAs with continuous, covalently closed circular structures, which have been further found to exhibit species conservation and tissue specificity<sup>[9]</sup>. With the emergence of next-generation sequencing, especially RNA sequencing technology, circRNAs have been found to be extensively expressed in the cytoplasm. In addition, they have been garnering attention because of their specificity of expression, complexity of regulation, and important role in pathogenesis of many diseases, especially cancer<sup>[10]</sup>. Unlike their linear counterparts, circRNAs are characterized by stable ring structure formed by a covalently closed continuous loop. Without free 3' and 5' ends, these molecules are not easily degraded by nucleases, which makes them ideal biomarkers for detection of disease<sup>[11]</sup>. Investigators have identified disease-specific patterns of circRNA expression, which can serve as biomarkers for diseases<sup>[12]</sup>, especially cancer<sup>[10,13]</sup>. However, there has been little investigation into the association of circRNAs with pancreatic cancer.

In this study, we focused our investigation on circRNA-hsa\_circ\_0006988, whose gene is located at chr11:36248634-36248980. Its gene symbol is LDLRAD3 (low density lipoprotein receptor class A domain containing 3), therefore we will refer to circRNA-hsa\_circ\_0006988 as circ-LDLRAD3 instead of its original name in circBase<sup>[14]</sup> (<http://www.circbase.org>). We chose circ-LDLRAD3 as a target for further study because we previously identified that it may be up-regulated in a previous microarray screening (<http://www.ncbi.nlm.nih.gov/geo/query/acc.cgi?acc=GSE69362>)<sup>[15]</sup> and associated with pancreatic cancer in circBase<sup>[14]</sup> and circ2Traits<sup>[16]</sup>. By expanding the sample size, we found that the expression levels of circ-LDLRAD3 were higher in both pancreatic cancer tissues and plasma from patients with pancreatic cancer as compared to control samples. Moreover, up-regulated expression of circ-LDLRAD3 was significantly related to major clinicopathological factors of patients with pancreatic cancer. Our results make clear that circ-LDLRAD3 may serve as a biomarker in the diagnosis of pancreatic cancer.

## MATERIALS AND METHODS

### Clinical samples

Thirty samples of pancreatic cancer and their paired adjacent pancreatic tissues were obtained from patients with pancreatic cancer treated at Shengjing Hospital of China Medical University (Shenyang, China) from September 2016 to June 2017. Paired normal tissue samples were obtained 5 cm from the pancreatic cancer tissue and were confirmed to contain no tumor cells after evaluation by two experienced pathologists. All specimens were immediately stored in liquid nitrogen until use.

Peripheral blood samples (4 mL) were collected from another 31 patients with pancreatic cancer and 31 healthy volunteers prior to any medical interventions at Shengjing Hospital of China Medical University (Shenyang, China) from October 2016 to July 2017. Plasma samples were isolated as previously described. The anti-coagulant for peripheral blood samples was ethylenediaminetetraacetic acid (EDTA). Clinical information was collected for all patients and healthy volunteers.

Tumors were staged according to the 8<sup>th</sup> tumor-node-metastasis (TNM) staging system drafted by the International Union Against Cancer. No patients received radiotherapy, chemotherapy, or targeted therapy before surgery. All patients and healthy volunteers provided written informed consent before the procedure. The Institutional Review Board of China Medical University approved this study based on the Helsinki Declaration.

### Cell culture

The normal pancreatic cell lines, HPC-Y5 and HPDE6-C7, were obtained from the Cell Bank of the Chinese Academy of Sciences (Shanghai, China). The pancreatic cancer cell lines, Capan-2, Panc-1, SW1990, and AsPC-1, were obtained from ATCC (Manassas, United States). HPC-Y5, HPDE6-C7, and Panc-1 cells were cultured in Dulbecco's modified Eagle's medium (DMEM) (Gibco, Gaithersburg, MD, United States); Capan-2 and AsPC-1 cells were cultured in RPMI-1640 medium (Gibco, Gaithersburg, MD, United States); and SW1990 cells were cultured in Leibovitz's L-15 medium (Gibco, Gaithersburg, MD, United States). All media contained 10% fetal bovine serum (FBS) (Gibco, Gaithersburg, MD, United States) and all cells were cultured in a humidified atmosphere consisting of 5% CO<sub>2</sub> and 95% air at 37 °C.

### Total RNA extraction

Total RNA from all cell lines, pancreatic cancer tissues, and paired adjacent tissues was extracted using TRIzol reagent (Invitrogen, Carlsbad, CA, United States). Total RNA in plasma samples was extracted using a mirVana PARIS Kit (Ambion, Carlsbad, CA, United States) following the manufacturer's instructions. Quantity

and quality of RNA were determined spectrophotometrically at 260 nm and 280 nm. The integrity and contamination were confirmed using denaturing agarose gel electrophoresis.

### Reverse transcription

Total RNA was reverse transcribed using a PrimeScript reagent kit with gRNA Eraser (Random primers) (TaKaRa, Dalian, China) according to the manufacturer's instructions.

### Sanger sequencing

To precisely examine the primer sequences of circ-LDLRAD3, Sanger sequencing was utilized. In brief, a T vector carrying the target fragment was utilized for Sanger sequencing in order to determine the back-spliced junction of circ-LDLRAD3. The following divergent primers were synthesized by Genesee Biotech (Guangzhou, China): 5'-CTTGCTGGACCAGAGAAC-3' (forward) and 5'-CATGAGGTTGTTCCGCTTC-3' (reverse). Sanger sequencing was performed by the same company.

### circ-LDLRAD3 detection using qRT-PCR

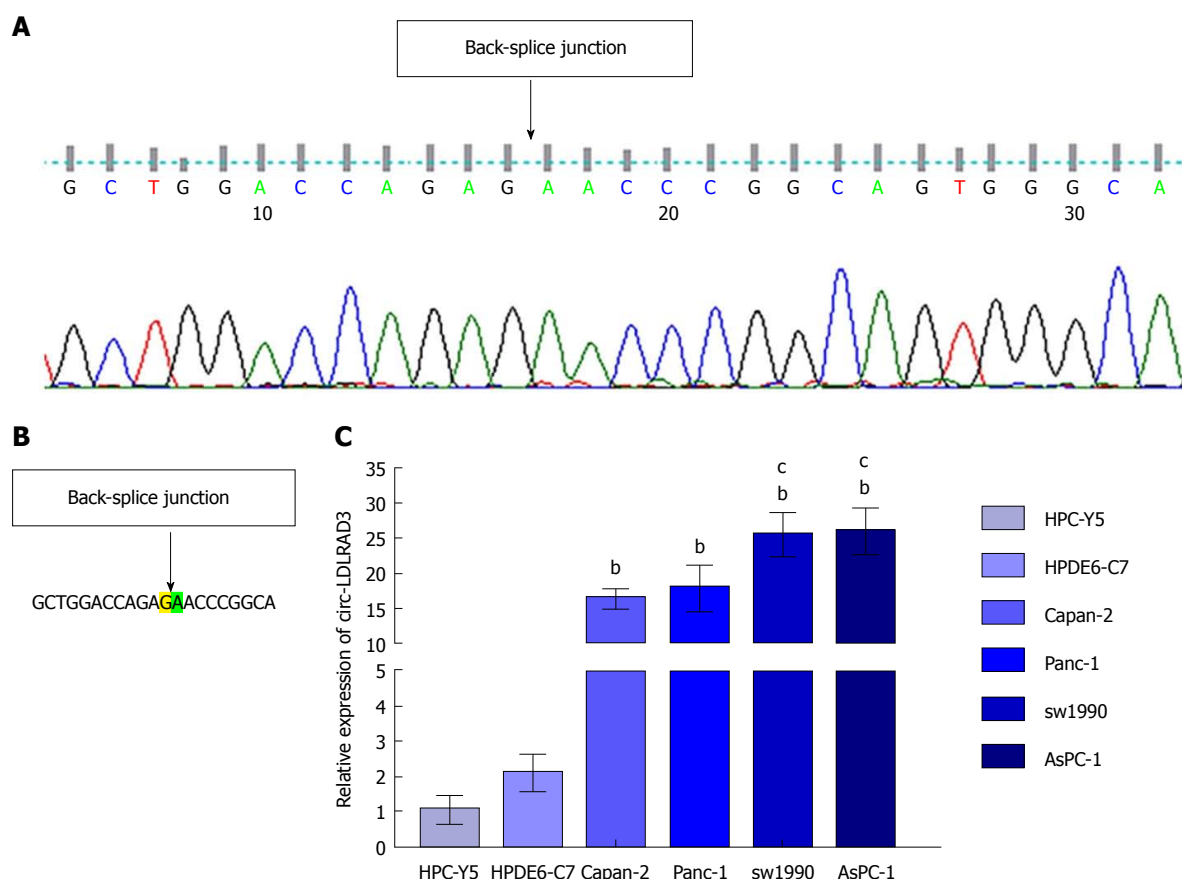
Real-time quantitative reverse transcription polymerase chain reactions (qRT-PCR) was performed using a Roche 480II system (Roche, Basel, Switzerland) utilizing SYBR Premix Ex Taq II (Tli RNaseH Plus) (Takara, Dalian, China), following the manufacturer-provided instructions. Primers for GAPDH were synthesized by Sangon Biotech (Shanghai, China) as follows: 5'-GCACCGTCAAGGCTGAGAAC-3' (forward) and 5'-TGGTGAAGACGCCAGTGG-3' (reverse). The data were analyzed using the comparative cycle threshold ( $\Delta$ CT) method after three independent experiments. All results are expressed as the mean  $\pm$  SD.

### Serological tumor-associated marker analysis

Serum carbohydrate antigen 19-9 (CA19-9) and carcinoembryonic antigen (CEA) were measured using a Roche E601 machine (Roche, Basel, Switzerland) with a cutoff value of 40 U/mL and 5 ng/mL, respectively.

### Statistical analysis

All statistical data were analyzed using SPSS 23.0 (SPSS, Chicago, IL, United States), GraphPad 7.0 (GraphPad Software, La Jolla, CA, United States), and SigmaPlot 12.5 (SigmaPlot Software, La Jolla, CA, United States). Differences in expression levels of circ-LDLRAD3 between pancreatic cancer tissues and paired adjacent non-tumorous tissues were compared by using paired *t*-tests, and differences in expression levels of circ-LDLRAD3 between plasma samples from patients with pancreatic cancer and those from healthy volunteers were compared by Student's *t*-tests. A Fisher's exact test was used to analyze the association between circ-LDLRAD3 expression and patients' clinicopathological factors. A Spearman's



**Figure 1** Circ-LDLRAD3 expression levels in pancreatic cell lines and pancreatic cancer cell lines. A: Sanger sequencing of circ-LDLRAD3 showed the back-splice junction. B: The back-splice junction of circ-LDLRAD3 in CircBase. C: Relative expression of circ-LDLRAD3 in human pancreatic cell lines and pancreatic cancer cell lines. <sup>a</sup> $P < 0.01$  vs pancreatic cell lines (HPC-Y5 and HPDE6-C7); <sup>c</sup> $P < 0.05$  vs primary pancreatic cancer cell lines (Capan-2 and Panc-1).

rank correlation coefficient was introduced to further calculate bivariate correlations. The receiver operating characteristics (ROC) curve was established to evaluate the diagnostic value of circ-LDLRAD3; the cutoff value of circ-LDLRAD3 was calculated using Youden index (specificity + sensitivity - 1). The comparison of the area under the ROC curve (AUC) was analyzed by Z-test.  $P$  values  $< 0.05$  were considered statistically significant.

## RESULTS

### Circ-LDLRAD3 expression is up-regulated in pancreatic cancer lines

Sanger sequencing of circ-LDLRAD3 qRT-PCR product was first conducted to determine the back-junction of circ-LDLRAD3. The results of the back-splice junction of circ-LDLRAD3 indicated there was no difference between our product and that found in CircBase (Figure 1A and B). Next, expression levels of circ-LDLRAD3 were tested in normal pancreatic cell lines (HPC-Y5 and HPDE6-C7) and pancreatic cancer cell lines (Capan-2, Panc-1, SW1990, and AsPC-1). These results indicate that the relative expression levels of circ-LDLRAD3 were higher in pancreatic cancer cell lines than in normal pancreatic cell lines ( $P < 0.01$ ). In

addition, the relative expression levels of circ-LDLRAD3 in metastatic pancreatic cancer cell lines (SW1990 and AsPC-1) were higher than those in primary pancreatic cancer cell lines (Capan-2 and Panc-1) ( $P < 0.05$ ) (Figure 1C).

### Circ-LDLRAD3 expression is up-regulated in pancreatic cancer tissues and plasma of patients with pancreatic cancer

Expression of circ-LDLRAD3 was measured via qRT-PCR in 30 pancreatic cancer tissues compared with paired adjacent non-tumorous tissues and in plasma samples of patients with pancreatic cancer compared with healthy volunteers. Lower  $\Delta CT$  values indicate higher expression of circ-LDLRAD3. As shown in Figure 2A, expression of circ-LDLRAD3 was up-regulated in pancreatic cancer tissues ( $P < 0.01$ ), while expression of circ-LDLRAD3 in plasma samples with pancreatic cancer were higher than those in healthy volunteers ( $P < 0.01$ , Figure 2B).

### Upregulation of circ-LDLRAD3 is associated with clinicopathological factors in patients with pancreatic cancer

The above data demonstrated that circ-LDLRAD3 expression was significantly up-regulated in pancreatic



**Table 1** Clinicopathological factors of patients' tissue samples and expression of circ-LDLRAD3 in pancreatic cancer

Characteristic	<i>n</i> (%)
Age (yr)	
≥ 60	19 (63.3)
< 60	11 (36.7)
Gender	
Male	9 (30)
Female	21 (70)
Tumor diameter (cm)	
≤ 4	19 (63.3)
> 4	11 (36.7)
CA19-9	
Positive	19 (63.3)
Negative	11 (36.7)
CEA	
Positive	16 (56.7)
Negative	13 (43.3)
Clinical stage	
I A	3 (10)
I B	10 (33.3)
II A	7 (23.3)
II B	9 (30)
III	1 (3.3)
IV	0 (0)
T classification	
T1	3 (10)
T2	15 (50)
T3	11 (36.7)
T4	1 (3.3)
N classification	
N0	20 (66.7)
N1	10 (33.3)
N2	0 (0)
Metastasis	
M0	30 (100)
M1	0 (0)
Venous invasion	
No	24 (80)
Yes	6 (20)
Lymphatic invasion	
No	23 (76.7)
Yes	7 (23.3)
Expression of circ-LDLRAD3	
Low expression	12 (40)
High expression	18 (60)

cancer tissues and plasma samples of patients with pancreatic cancer; hence, we analyzed the association between circ-LDLRAD3 and clinicopathological factors of patients with pancreatic cancer.

As shown in Tables 1-3, in pancreatic cancer tissues, a strong association was observed between circ-LDLRAD3 expression and venous invasion ( $P = 0.025$ ) and lymphatic invasion ( $P = 0.014$ ). However, no association was found between circ-LDLRAD3 expression and other clinicopathological factors including age ( $P = 0.279$ ), gender ( $P = 0.255$ ), tumor diameter ( $P = 0.279$ ), CA19-9 ( $P = 0.643$ ), CEA ( $P = 0.88$ ), clinical stage ( $P = 0.256$ ), T classification ( $P = 0.274$ ), N classification ( $P = 0.429$ ), and metastasis (none). A Spearman analysis of correlation between circ-LDLRAD3 and various clinicopathological factors indicated that expression of circ-LDLRAD3

**Table 2** Correlation between circ-LDLRAD3 expression and clinicopathological factors of pancreatic cancer patients (tissue samples)

Characteristic	Circ-LDLRAD3		<i>P</i> value
	Low or none, <i>n</i>	High, <i>n</i>	
Age (yr)			
≥ 60	9	10	0.279
< 60	3	8	
Gender			
Male	7	14	0.255
Female	5	4	
Tumor diameter (cm)			
≤ 4	9	10	0.279
> 4	3	8	
CA19-9			
Positive	5	6	0.643
Negative	7	12	
CEA			
Positive	5	8	0.88
Negative	7	10	
Clinical stage			
I A	2	1	0.256
I B	6	4	
II A	1	6	
II B	3	6	
III	0	1	
IV	0	0	
T classification			
T1	2	1	0.274
T2	8	8	
T3	2	8	
T4	0	1	
N classification			
N0	9	11	0.429
N1	3	7	
N2	0	0	
Metastasis			
M0	12	18	None
M1	0	0	
Venous invasion			
No	12	12	0.025
Yes	0	6	
Lymphatic invasion			
No	12	11	0.014
Yes	0	7	

was correlated with clinical stage ( $P = 0.022$ ), T classification ( $P = 0.003$ ), venous invasion ( $P = 0.025$ ), and lymphatic invasion ( $P = 0.008$ ).

In the plasma of patients with pancreatic cancer (Tables 4-6), circ-LDLRAD3 levels were significantly associated with CA19-9 ( $P = 0.03$ ), N classification ( $P = 0.049$ ), venous invasion ( $P = 0.005$ ), and lymphatic invasion (0.014). No association was found between circ-LDLRAD3 and age, gender, tumor diameter, CEA, clinical stage, T classification, or metastasis. In Spearman analysis, circ-LDLRAD3 expression was correlated with clinical stage ( $P < 0.001$ ), metastasis ( $P = 0.004$ ), venous invasion ( $P = 0.029$ ), and lymphatic invasion ( $P < 0.001$ ).

#### Potential diagnostic value of circ-LDLRAD3 as a biomarker in pancreatic cancer

To identify whether circ-LDLRAD3 can serve as a

**Table 3** Spearman analysis of correlation between circ-LDLRAD3 and clinicopathological factors of pancreatic cancer patients ( $\Delta$ CT values in tissues)

Variable	Circ-LDLRAD3 expression level	
	Spearman correlation	P value
Age (yr)	-0.22	0.243
Gender	-0.122	0.521
Tumor diameter (cm)	-0.303	0.104
CA19-9	0.028	0.883
CEA	0.019	0.919
Clinical stage	-0.415	0.022
T classification	-0.519	0.003
N classification	-0.196	0.299
Metastasis	None	None
Venous invasion	-0.607	< 0.001
Lymphatic invasion	-0.478	0.008

biomarker in pancreatic cancer,  $\Delta$ CT values were further evaluated. The area under the ROC curve (AUC) was 0.67; the cutoff value, sensitivity, and specificity were 9.315, 0.5738, and 0.7049, respectively. When combined with CA19-9, the AUC was increased to 0.87 and the sensitivity and specificity were 0.8033 and 0.9355, respectively (Figure 3).

## DISCUSSION

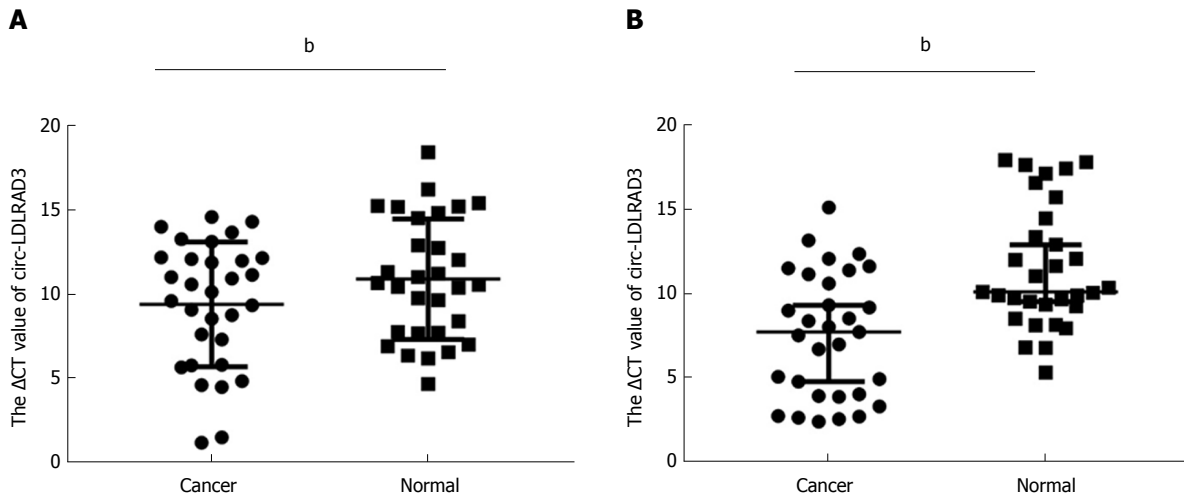
There have been few recent therapeutic advances in the treatment of pancreatic cancer. For more than 10 years, surgery and chemotherapy with gemcitabine have been the standard treatment methods<sup>[17-19]</sup>; yet, only 13%-15% of patients with pancreatic cancer are likely to undergo pancreaticoduodenectomy<sup>[20]</sup>. Furthermore, patients with pancreatic cancer are prone to experience multidrug chemotherapy resistance<sup>[21]</sup>. There are several challenges in the diagnosis and treatment of pancreatic cancer. First, there is difficulty in making an early diagnosis. The pathological and biological characteristics of pancreatic cancer result in early symptoms which lack specificity<sup>[22]</sup>. Distant metastases have already occurred in roughly 50% of patients with pancreatic cancer at the time of treatment while the resection rate was only 15%<sup>[23]</sup>. Second, the heterogeneity of pancreatic cancer makes it difficult to treat. Whole genome analysis of pancreatic cancer shows that 12 core signaling pathways have genetic changes. Alterations in multiple genes and multiple pathways increase the difficulty of achieving effective treatment, resulting in poor prognoses<sup>[20,24]</sup>. Therefore, the key to the diagnosis and treatment of pancreatic cancer lies in early detection and diagnosis. Risk assessment of pancreatic cancer-relevant molecular markers in patients and early and timely intervention to prevent deterioration will have a positive effect on the diagnosis and treatment of pancreatic cancer<sup>[25,26]</sup>.

CircRNAs are a novel class of RNAs with O-shaped closed structure that exist in the living cells. Unlike

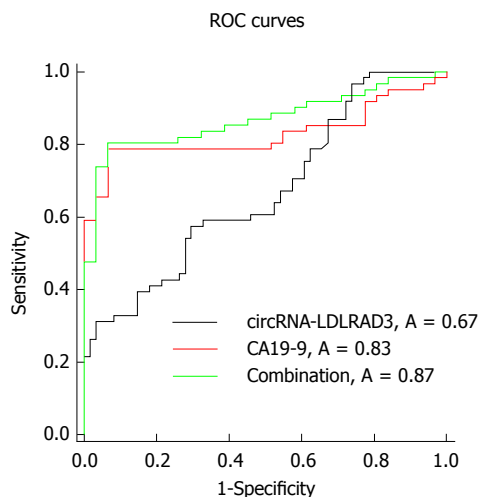
**Table 4** Clinicopathological factors of plasma samples of patients with pancreatic cancer and expression of circ-LDLRAD3

Characteristic	n (%)
Age (yr)	
≥ 60	15 (48.4)
< 60	16 (51.6)
Gender	
Male	19 (61.3)
Female	12 (38.7)
Tumor diameter (cm)	
≤ 4	21 (67.7)
> 4	10 (32.3)
CA19-9	
Positive	25 (87.1)
Negative	4 (12.9)
CEA	
Positive	10 (32.3)
Negative	21 (67.7)
Clinical stage	
I A	5 (16.1)
I B	6 (19.4)
II A	6 (19.4)
II B	5 (16.1)
III	6 (19.4)
IV	3 (9.7)
T classification	
T1	5 (16.1)
T2	15 (48.4)
T3	9 (29.0)
T4	2 (6.5)
N classification	
N0	21 (67.7)
N1	6 (19.4)
N2	4 (12.9)
Metastasis	
M0	28 (90.3)
M1	3 (9.7)
Venous invasion	
No	19 (61.3)
Yes	12 (38.7)
Lymphatic invasion	
No	21 (67.7)
Yes	10 (32.3)
Expression of circ-LDLRAD3	
Low expression	9 (29)
High expression	22 (71)

traditional linear RNA molecules, circRNAs are resistant to degradation by exonuclease and RNases because there are no 5'-end, 3'-end, or even poly(A) tail<sup>[27]</sup>. Hence, circRNA can stably exist in cells for a long period of time. Furthermore, circRNA molecules in human cells are ten-fold more numerous than the number of homogenetic linear isomer RNA molecules<sup>[28]</sup>. CircRNA molecules have highly conserved sequences, a stable existence, and tissue-specific expression; circRNAs have been demonstrated to regulate gene expression in post-transcriptional ways<sup>[29]</sup>. For example, circRNAs can act as microRNA (miRNA) sponges. Li *et al.*<sup>[30]</sup> reported that circ-ITCH competitively sponged miRNA-7, miRNA-17, and miRNA-214, leading to higher expression of the ITCH gene. The ITCH gene product has been shown to inhibit Dvl2 phosphor-



**Figure 2** The expression levels of circ-LDLRAD3 in pancreatic cancer samples. A: The expression levels of circ-LDLRAD3 in pancreatic cancer tissues and paired non-tumorous tissues ( $n = 30$  each). Lower  $\Delta$ CT value indicates higher expression of circ-LDLRAD3. B: The expression levels of circ-LDLRAD3 in plasma samples of patients with pancreatic cancer and healthy controls ( $n = 31$  each).  $^bP < 0.01$ .



**Figure 3** Receiver operating characteristic curves of circ-LDLRAD3 alone or in combination with CA19-9.

ylation and, furthermore, to inhibit the Wnt signaling pathway to prevent tumorigenesis in the esophagus<sup>[30]</sup>. In addition, many differentially expressed circRNAs have been investigated in tissue, blood<sup>[31]</sup>, saliva<sup>[32]</sup>, and other bodily fluid<sup>[33]</sup> samples, suggesting that circRNA molecules can serve as biomarkers in many diseases including diabetes mellitus<sup>[34]</sup>, coronary artery disease<sup>[35]</sup>, and cancer<sup>[10]</sup>. CircRNAs, together with other known biomarkers, may be able to improve the accuracy of specificity of diagnosis in certain diseases. However, little work has been published thus far regarding the role of circRNAs in pancreatic cancer.

This is the first study to report the expression pattern of circ-LDLRAD3 and its diagnostic value in pancreatic cancer. The expression of circ-LDLRAD3 was higher in pancreatic cancer cell lines, pancreatic cancer tissues, and plasma samples of patients with

pancreatic cancer when compared to matched control samples. Moreover, the expression of circ-LDLRAD3 in metastatic pancreatic cell lines was higher than that in primary cell lines and there was a strong correlation between circ-LDLRAD3 expression and venous and lymphatic invasion in both tissues and plasma samples. Interestingly, in plasma samples, circ-LDLRAD3 was found to be associated with metastasis. Considering that there were no pancreatic cancer tissue samples with metastasis in the 30 patients tested, we strongly believe that the expression of circ-LDLRAD3 correlates with venous invasion, lymphatic invasion, and metastasis. These data indicate that circ-LDLRAD3 has potential to be a novel biomarker of metastatic pancreatic cancer with invasion potential.

This study provides a new avenue for the early diagnosis of pancreatic cancer, which has traditionally been clinically difficult<sup>[32]</sup>. The sensitivity and specificity of tumor marker CA19-9 in the diagnosis of pancreatic cancer are 79%-81% and 82%-90%, respectively. However, about 3%-7% of pancreatic cancer patients are Lewis antigen negative and also do not express CA19-9; abnormal CA19-9 levels are not detected in this type of patients<sup>[20,36,37]</sup>. In this study, serum levels of circ-LDLRAD3 were found to be closely related to blood CA19-9 levels. Compared with the diagnostic value of circ-LDLRAD3 alone in pancreatic cancer, whose AUC, sensitivity, and specificity were 0.67, 0.5738, and 0.7049, respectively, the combination of circ-LDLRAD3 and CA19-9 increased the diagnostic value, with corresponding values for AUC, sensitivity, and specificity were 0.87, 0.8033, and 0.9355, respectively. These results suggest that circ-LDLRAD3 has potential as a novel biomarker in the diagnosis of pancreatic cancer.

However, due to the limited number of available

**Table 5** Correlation between circ-LDLRAD3 expression and clinicopathological factors of pancreatic cancer patients (plasma samples)

Characteristic	Circ-LDLRAD3		P value
	Low or one, <i>n</i>	High, <i>n</i>	
Age (yr)			
≥ 60	5	10	0.609
< 60	4	12	
Gender			
Male	5	14	0.675
Female	4	8	
Tumor diameter (cm)			
≤ 4	6	15	0.935
> 4	3	7	
CA19-9			
Positive	6	21	0.030
Negative	3	1	
CEA			
Positive	5	5	0.076
Negative	4	17	
Clinical stage			
I A	3	2	0.060
I B	3	3	
II A	3	3	
II B	0	5	
III	0	6	
IV	0	3	
T classification			
T1	3	2	0.282
T2	3	12	
T3	3	6	
T4	0	2	
N classification			
N0	9	12	0.049
N1	0	6	
N2	0	4	
Metastasis			
M0	9	19	0.244
M1	0	3	
Venous invasion			
No	9	10	0.005
Yes	0	12	
Lymphatic invasion			
No	9	12	0.014
Yes	0	10	

tissue and plasma samples from patients with pancreatic cancer, only 30 paired pancreatic cancer tissues and 31 matched plasma samples were analyzed. Studies utilizing a large number of samples in multiple centers should be implemented in future. The study of circ-LDLRAD3 function in pancreatic cancer is also likely to improve the understanding of the occurrence and progression mechanisms of pancreatic cancer.

In conclusion, our data indicate that circ-LDLRAD3 expression was significantly up-regulated in pancreatic cancer cell lines, pancreatic cancer tissues, and pancreatic cancer plasma samples. Furthermore, circ-LDLRAD3 expression was correlated with lymphatic invasion, venous invasion, and metastasis. Therefore, circ-LDLRAD3 has potential as a novel biomarker indicative of tumor invasion capacity in the diagnosis

**Table 6** Correlation between circ-LDLRAD3 expression and clinicopathological factors of pancreatic cancer patients ( $\Delta$ CT values in plasma samples)

Variable	Circ-LDLRAD3 expression level	
	Spearman correlation	P value
Age (yr)	-0.108	0.562
Gender	0.059	0.752
Tumor diameter (cm)	-0.102	0.584
CA19-9	-0.398	0.027
CEA	-0.085	0.650
Clinical stage	-0.603	< 0.001
T classification	-0.129	0.491
N classification	-0.271	0.140
Metastasis	-0.5	0.004
Venous invasion	-0.392	0.029
Lymphatic invasion	-0.611	< 0.001

of pancreatic cancer.

## ARTICLE HIGHLIGHTS

### Research background

Pancreatic cancer is a malignancy with a very poor prognosis. There have been few recent therapeutic advances in the treatment of pancreatic cancer for more than 10 years. The key to improving the prognosis of pancreatic cancer mostly lies in early diagnosis and early treatment. Circular RNAs (circRNAs) are a class of noncoding RNAs characterized by stable ring structure formed by a covalently closed continuous loop, which makes them stable in cells, tissues, and body fluid. Therefore, they can serve as ideal biomarkers for detection of diseases, especially cancer. This study indicates that circ-LDLRAD3 has potential as a novel biomarker indicative of tumor invasion capacity in the diagnosis of pancreatic cancer.

### Research motivation

This study aimed to analyze and evaluate the diagnostic value of a new circular RNA, circ-LDLRAD3, in pancreatic cancer. And research data suggest that circ-LDLRAD3 may be used as a biomarker in pancreatic cancer diagnosis.

### Research objectives

The main objectives in this study were pancreatic cancer and a new circular RNA, circ-LDLRAD3. The results showed that the expression level of circ-LDLRAD3 was up-regulated in pancreatic cancer and it can serve as a biomarker in pancreatic cancer.

### Research methods

The expression levels of circ-LDLRAD3 were detected using real-time quantitative reverse transcription polymerase chain reaction (qRT-PCR) in pancreatic cancer cell lines, normal pancreatic cell lines, paired pancreatic cancer tissues and adjacent non-tumorous tissues, and plasma samples from patients with pancreatic cancer and healthy volunteers. The relationship between circ-LDLRAD3 expression and patients' clinicopathological factors was analyzed, the diagnostic value of circ-LDLRAD3 was further calculated alone and combined with CA19-9.

### Research results

Our study found that expression levels of circ-LDLRAD3 were up-regulated in pancreatic cell lines, pancreatic cancer tissues, and plasma samples from pancreatic cancer patients. It may serve as a new biomarker in the diagnosis of pancreatic cancer. Studies utilizing a large number of samples in multiple centers should be implemented in future. The study of circ-LDLRAD3 function in pancreatic cancer is also likely to improve the understanding of the occurrence



and progression mechanisms of pancreatic cancer.

### Research conclusions

This study indicated that the expression of a new circular RNA, circ-LDLRAD3, was significantly up-regulated in pancreatic cancer cell lines, pancreatic cancer tissues, and pancreatic cancer plasma samples. Furthermore, circ-LDLRAD3 expression was correlated with lymphatic invasion, venous invasion, and metastasis. Therefore, circ-LDLRAD3 has potential as a novel biomarker indicative of tumor invasion capacity in the diagnosis of pancreatic cancer. It is highly believed that the key to improving the prognosis of pancreatic cancer mostly lies in early diagnosis and early treatment. Therefore, searching for ideal biomarkers is essential. Circular RNAs are a class of non-coding RNAs which are stable because of their unique circular structure. Previous studies have confirmed that some circRNAs can serve as biomarkers in certain diseases. In this study, we focused a new circular RNA, circ-LDLRAD3, and hypothesized that expression levels of circ-LDLRAD3 were up-regulated in pancreatic cancer. Moreover, this study verified the hypothesis and found that expression levels of circ-LDLRAD3 were significantly up-regulated in pancreatic cancer cell lines, pancreatic cancer tissues, and pancreatic cancer plasma samples, whose expression levels were correlated with lymphatic invasion, venous invasion, and metastasis. Therefore, circ-LDLRAD3 may be a new biomarker in the diagnosis of pancreatic cancer.

### Research perspectives

This is the first study to report the expression pattern of circ-LDLRAD3 and its diagnostic value in pancreatic cancer and provides a new avenue for the early diagnosis of pancreatic cancer. However, due to the limited number of available tissue and plasma samples from patients with pancreatic cancer, studies utilizing a large number of samples in multiple centers should be implemented in future. The study of circ-LDLRAD3 function in pancreatic cancer is also likely to improve the understanding of the occurrence and progression mechanisms of pancreatic cancer. And more types of circular RNAs and their relationship with pancreatic cancer should be verified in the future research.

## REFERENCES

- 1 Dimastromatteo J, Houghton JL, Lewis JS, Kelly KA. Challenges of Pancreatic Cancer. *Cancer J* 2015; **21**: 188-193 [PMID: 26049698 DOI: 10.1097/PPC.0000000000000109]
- 2 Yamane S, Katada C, Tanabe S, Azuma M, Ishido K, Yano T, Wada T, Watanabe A, Kawanishi N, Furue Y, Kondo Y, Komori S, Ishiyama H, Hayakawa K, Koizumi W. Clinical Outcomes in Patients with Cancer of Unknown Primary Site Treated By Gastrointestinal Oncologists. *J Transl Int Med* 2017; **5**: 58-63 [PMID: 28680840 DOI: 10.1515/jtim-2017-0006]
- 3 Chen W, Zheng R, Baade PD, Zhang S, Zeng H, Bray F, Jemal A, Yu XQ, He J. Cancer statistics in China, 2015. *CA Cancer J Clin* 2016; **66**: 115-132 [PMID: 26808342 DOI: 10.3322/caac.21338]
- 4 Siegel RL, Miller KD, Jemal A. Cancer Statistics, 2017. *CA Cancer J Clin* 2017; **67**: 7-30 [PMID: 28055103 DOI: 10.3322/caac.21387]
- 5 Kamisawa T, Wood LD, Itoi T, Takaori K. Pancreatic cancer. *Lancet* 2016; **388**: 73-85 [PMID: 26830752 DOI: 10.1016/S0140-6736(16)00141-0]
- 6 Korenblit J, Tholey DM, Tolin J, Loren D, Kowalski T, Adler DG, Davolos J, Siddiqui AA. Effect of the time of day and queue position in the endoscopic schedule on the performance characteristics of endoscopic ultrasound-guided fine-needle aspiration for diagnosing pancreatic malignancies. *Endosc Ultrasound* 2016; **5**: 78-84 [PMID: 27080605 DOI: 10.4103/2303-9027.180470]
- 7 Ozkan M, Cakiroglu M, Kocaman O, Kurt M, Yilmaz B, Can G, Korkmaz U, Dandil E, Eksi Z. Age-based computer-aided diagnosis approach for pancreatic cancer on endoscopic ultrasound images. *Endosc Ultrasound* 2016; **5**: 101-107 [PMID: 27080608 DOI: 10.4103/2303-9027.180473]
- 8 Urayama S. Pancreatic cancer early detection: expanding higher-risk group with clinical and metabolomics parameters. *World J Gastroenterol* 2015; **21**: 1707-1717 [PMID: 25684935 DOI: 10.3748/wjg.v21.i6.1707]
- 9 Huang S, Yang B, Chen BJ, Bliim N, Ueberham U, Arendt T, Janitz M. The emerging role of circular RNAs in transcriptome regulation. *Genomics* 2017; **109**: 401-407 [PMID: 28655641 DOI: 10.1016/j.ygeno.2017.06.005]
- 10 Wang Y, Mo Y, Gong Z, Yang X, Yang M, Zhang S, Xiong F, Xiang B, Zhou M, Liao Q, Zhang W, Li X, Li X, Li Y, Li G, Zeng Z, Xiong W. Circular RNAs in human cancer. *Mol Cancer* 2017; **16**: 25 [PMID: 28143578 DOI: 10.1186/s12943-017-0598-7]
- 11 Cortés-López M, Miura P. Emerging Functions of Circular RNAs. *Yale J Biol Med* 2016; **89**: 527-537 [PMID: 28018143]
- 12 Peng ZY. The biomarkers for acute kidney injury: A clear road ahead? *J Transl Int Med* 2016; **4**: 95-98 [PMID: 28191528 DOI: 10.1515/jtim-2016-0035]
- 13 Beermann J, Piccoli MT, Viereck J, Thum T. Non-coding RNAs in Development and Disease: Background, Mechanisms, and Therapeutic Approaches. *Physiol Rev* 2016; **96**: 1297-1325 [PMID: 27535639 DOI: 10.1152/physrev.00041.2015]
- 14 Glažar P, Papavasileiou P, Rajewsky N. circBase: a database for circular RNAs. *RNA* 2014; **20**: 1666-1670 [PMID: 25234927 DOI: 10.1261/rna.043687.113]
- 15 Qu S, Song W, Yang X, Wang J, Zhang R, Zhang Z, Zhang H, Li H. Microarray expression profile of circular RNAs in human pancreatic ductal adenocarcinoma. *Genom Data* 2015; **5**: 385-387 [PMID: 26484292 DOI: 10.1016/j.gdata.2015.07.017]
- 16 Ghosal S, Das S, Sen R, Basak P, Chakrabarti J. Circ2Traits: a comprehensive database for circular RNA potentially associated with disease and traits. *Front Genet* 2013; **4**: 283 [PMID: 24339831 DOI: 10.3389/fgene.2013.00283]
- 17 Strobel O, Büchler MW. Pancreatic cancer: Clinical practice guidelines - what is the evidence? *Nat Rev Clin Oncol* 2016; **13**: 593-594 [PMID: 27531701 DOI: 10.1038/nrclinonc.2016.127]
- 18 Makohon-Moore A, Iacobuzio-Donahue CA. Pancreatic cancer biology and genetics from an evolutionary perspective. *Nat Rev Cancer* 2016; **16**: 553-565 [PMID: 27444064 DOI: 10.1038/nrc.2016.66]
- 19 Van Ryckeghem F. Corticosteroids, the oldest agent in the prevention of chemotherapy-induced nausea and vomiting: What about the guidelines? *J Transl Int Med* 2016; **4**: 46-51 [PMID: 28191518 DOI: 10.1515/jtim-2016-0010]
- 20 Notta F, Chan-Seng-Yue M, Lemire M, Li Y, Wilson GW, Connor AA, Denroche RE, Liang SB, Brown AM, Kim JC, Wang T, Simpson JT, Beck T, Borgida A, Buchner N, Chadwick D, Hafezi-Bakhtiari S, Dick JE, Heisler L, Hollingsworth MA, Ibrahimov E, Jang GH, Johns J, Jorgensen LG, Law C, Ludkovski O, Lungu I, Ng K, Pasternack D, Petersen GM, Shlush LI, Timms L, Tsao MS, Wilson JM, Yung CK, Zogopoulos G, Bartlett JM, Alexandrov LB, Real FX, Cleary SP, Roehrl MH, McPherson JD, Stein LD, Hudson TJ, Campbell PJ, Gallinger S. Erratum: A renewed model of pancreatic cancer evolution based on genomic rearrangement patterns. *Nature* 2017; **542**: 124 [PMID: 27851734 DOI: 10.1038/nature20164]
- 21 Roe JS, Hwang CI, Somerville TDD, Milazzo JP, Lee EJ, Da Silva B, Maiorino L, Tiriac H, Young CM, Miyabayashi K, Filippini D, Creighton B, Burkhart RA, Buscaglia JM, Kim EJ, Grem JL, Lazenby AJ, Grunkemeyer JA, Hollingsworth MA, Grandgenett PM, Egeblad M, Park Y, Tuveson DA, Vakoc CR. Enhancer Reprogramming Promotes Pancreatic Cancer Metastasis. *Cell* 2017; **170**: 875-888.e20 [PMID: 28757253 DOI: 10.1016/j.cell.2017.07.007]
- 22 Michalski CW, Hackert T, Büchler MW. Targeting metabolism in pancreatic cancer. *Lancet Oncol* 2017; **18**: 699-700 [PMID: 28495638 DOI: 10.1016/S1470-2045(17)30304-2]
- 23 Tsutsumi H, Hara K, Mizuno N, Hijioka S, Imaoka H, Tajika M, Tanaka T, Ishihara M, Yoshimura K, Shimizu Y, Niwa Y, Sasaki Y, Yamao K. Clinical impact of preoperative endoscopic ultrasound-guided fine-needle aspiration for pancreatic ductal adenocarcinoma. *Endosc Ultrasound* 2016; **5**: 94-100 [PMID: 27080607 DOI: 10.4103/2303-9027.180472]
- 24 Yamabe A, Irisawa A, Bhutani MS, Shibukawa G, Fujisawa

- M, Sato A, Yoshida Y, Arakawa N, Ikeda T, Igarashi R, Maki T, Yamamoto S. Efforts to improve the diagnostic accuracy of endoscopic ultrasound-guided fine-needle aspiration for pancreatic tumors. *Endosc Ultrasound* 2016; **5**: 225-232 [PMID: 27503153 DOI: 10.4103/2303-9027.187862]
- 25 **Zhu P**, Sun S. Endoscopic ultrasound pin-points the precision medicine for pancreatic cancer. *Endosc Ultrasound* 2016; **5**: 1-3 [PMID: 26879159 DOI: 10.4103/2303-9027.175874]
- 26 **Kleeff J**, Michl P. Targeted therapy of pancreatic cancer: biomarkers are needed. *Lancet Oncol* 2017; **18**: 421-422 [PMID: 28259609 DOI: 10.1016/S1470-2045(17)30087-6]
- 27 **Qu S**, Yang X, Li X, Wang J, Gao Y, Shang R, Sun W, Dou K, Li H. Circular RNA: A new star of noncoding RNAs. *Cancer Lett* 2015; **365**: 141-148 [PMID: 26052092 DOI: 10.1016/j.canlet.2015.06.003]
- 28 **Chen LL**. The biogenesis and emerging roles of circular RNAs. *Nat Rev Mol Cell Biol* 2016; **17**: 205-211 [PMID: 26908011 DOI: 10.1038/nrm.2015.32]
- 29 **Hansen TB**, Jensen TI, Clausen BH, Bramsen JB, Finsen B, Damgaard CK, Kjems J. Natural RNA circles function as efficient microRNA sponges. *Nature* 2013; **495**: 384-388 [PMID: 23446346 DOI: 10.1038/nature11993]
- 30 **Li F**, Zhang L, Li W, Deng J, Zheng J, An M, Lu J, Zhou Y. Circular RNA ITCH has inhibitory effect on ESCC by suppressing the Wnt/ $\beta$ -catenin pathway. *Oncotarget* 2015; **6**: 6001-6013 [PMID: 25749389 DOI: 10.18632/oncotarget.3469]
- 31 **Zhang YG**, Yang HL, Long Y, Li WL. Circular RNA in blood corpuscles combined with plasma protein factor for early prediction of pre-eclampsia. *BJOG* 2016; **123**: 2113-2118 [PMID: 26846540 DOI: 10.1111/1471-0528.13897]
- 32 **Bahn JH**, Zhang Q, Li F, Chan TM, Lin X, Kim Y, Wong DT, Xiao X. The landscape of microRNA, Piwi-interacting RNA, and circular RNA in human saliva. *Clin Chem* 2015; **61**: 221-230 [PMID: 25376581 DOI: 10.1373/clinchem.2014.230433]
- 33 **Qu S**, Zhong Y, Shang R, Zhang X, Song W, Kjems J, Li H. The emerging landscape of circular RNA in life processes. *RNA Biol* 2017; **14**: 992-999 [PMID: 27617908 DOI: 10.1080/15476286.2016.1220473]
- 34 **Zhao Z**, Li X, Jian D, Hao P, Rao L, Li M. Hsa\_circ\_0054633 in peripheral blood can be used as a diagnostic biomarker of pre-diabetes and type 2 diabetes mellitus. *Acta Diabetol* 2017; **54**: 237-245 [PMID: 27878383 DOI: 10.1007/s00592-016-0943-0]
- 35 **Zhao Z**, Li X, Gao C, Jian D, Hao P, Rao L, Li M. Peripheral blood circular RNA hsa\_circ\_0124644 can be used as a diagnostic biomarker of coronary artery disease. *Sci Rep* 2017; **7**: 39918 [PMID: 28045102 DOI: 10.1038/srep39918]
- 36 **Bhutani MS**, Koduru P, Joshi V, Saxena P, Suzuki R, Irisawa A, Yamao K. The role of endoscopic ultrasound in pancreatic cancer screening. *Endosc Ultrasound* 2016; **5**: 8-16 [PMID: 26879161 DOI: 10.4103/2303-9027.175876]
- 37 **Mohammad Alizadeh AH**, Shahrokh S, Hadizadeh M, Padashi M, Zali MR. Diagnostic potency of EUS-guided FNA for the evaluation of pancreatic mass lesions. *Endosc Ultrasound* 2016; **5**: 30-34 [PMID: 26879164 DOI: 10.4103/2303-9027.175879]

**P- Reviewer:** Chamberlain MC, Higuchi K, Jones G  
**S- Editor:** Gong ZM **L- Editor:** Wang TQ **E- Editor:** Huang Y





Published by **Baishideng Publishing Group Inc**  
7901 Stoneridge Drive, Suite 501, Pleasanton, CA 94588, USA  
Telephone: +1-925-223-8242  
Fax: +1-925-223-8243  
E-mail: [bpgoffice@wjgnet.com](mailto:bpgoffice@wjgnet.com)  
Help Desk: <http://www.f6publishing.com/helpdesk>  
<http://www.wjgnet.com>



ISSN 1007-9327

