



Observational Study

Incidence, prevalence, and comorbidities of chronic pancreatitis: A 7-year population-based study

Qiu-Yu Cai, Kun Tan, Xue-Li Zhang, Xu Han, Jing-Ping Pan, Zhi-Yin Huang, Cheng-Wei Tang, Jing Li

Specialty type: Gastroenterology and hepatology

Provenance and peer review: Invited article; Externally peer reviewed.

Peer-review model: Single blind

Peer-review report's scientific quality classification

Grade A (Excellent): 0
Grade B (Very good): 0
Grade C (Good): C, C, C
Grade D (Fair): 0
Grade E (Poor): 0

P-Reviewer: Poddighe D, Kazakhstan; Rathnaswami A, India

Received: March 27, 2023

Peer-review started: March 27, 2023

First decision: April 26, 2023

Revised: May 20, 2023

Accepted: July 11, 2023

Article in press: July 11, 2023

Published online: August 14, 2023



Qiu-Yu Cai, Zhi-Yin Huang, Cheng-Wei Tang, Jing Li, Department of Gastroenterology, West China Hospital, Sichuan University, Chengdu 610041, Sichuan Province, China

Kun Tan, Xue-Li Zhang, Xu Han, Jing-Ping Pan, Sichuan Health Information Association, Chengdu 610041, Sichuan Province, China

Corresponding author: Jing Li, MD, PhD, Doctor, Department of Gastroenterology, West China Hospital, Sichuan University, No. 37 Guoxue Xiang, Chengdu 610041, Sichuan Province, China. melody224@163.com

Abstract

BACKGROUND

Chronic pancreatitis (CP) is a fibroinflammatory syndrome leading to reduced quality of life and shortened life expectancy. Population-based estimates of the incidence, prevalence, and comorbidities of CP in China are scarce.

AIM

To characterize the incidence, prevalence, and comorbidities of CP in Sichuan Province, China, with population-based data.

METHODS

Data on CP from 2015 to 2021 were obtained from the Health Information Center of Sichuan Province. During the study period, a total of 38090 individuals were diagnosed with CP in Sichuan Province. The yearly incidence rate and point prevalence rate (December 31, 2021) of CP were calculated. The prevalence of comorbid conditions in CP patients was estimated. The annual number of CP-related hospitalizations, hospital length of stay, and hospitalization costs for CP were evaluated. Yearly incidence rates were standardized for age by the direct method using the permanent population of Sichuan Province in the 2020 census as the standard population. An analysis of variance test for the linearity of scaled variables and the Cochran-Armitage trend test for categorical data were performed to investigate the yearly trends, and a two-sided test with $P < 0.05$ was considered statistically significant.

RESULTS

The 38090 CP patients comprised 23280 males and 14810 females. The mean age of patients at CP diagnosis was 57.83 years, with male patients (55.87 years) being younger than female patients (60.11 years) ($P < 0.001$). The mean incidence rate of

CP during the study period was 6.81 per 100000 person-years, and the incidence of CP increased each year, from 4.03 per 100000 person-years in 2015 to 8.27 per 100000 person-years in 2021 ($P < 0.001$). The point prevalence rate of CP in 2021 was 45.52 per 100000 individuals for the total population, with rates of 55.04 per 100000 individuals for men and 35.78 per 100000 individuals for women ($P < 0.001$). Individuals aged 65 years or older had the highest prevalence of CP (113.38 per 100000 individuals) ($P < 0.001$). Diabetes (26.32%) was the most common comorbidity in CP patients. The number of CP-related hospitalizations increased from 3739 in 2015 to 11009 in 2021. The total costs for CP-related hospitalizations for CP patients over the study period were 667.96 million yuan, with an average of 17538 yuan per patient.

CONCLUSION

The yearly incidence of CP is increasing, and the overall CP hospitalization cost has increased by 1.4 times during the last 7 years, indicating that CP remains a heavy health burden.

Key Words: Chronic pancreatitis; Epidemiology; Incidence; Prevalence; Comorbidities; Disease burden

©The Author(s) 2023. Published by Baishideng Publishing Group Inc. All rights reserved.

Core Tip: Chronic pancreatitis (CP) remains a heavy health burden worldwide. However, available epidemiological data on CP in China are scarce. We conducted a population-based study on the incidence, prevalence, comorbidities, and disease burden of CP in Sichuan Province, China, from 2015 to 2021. We analyzed a total of 38090 patients, which represents the largest series of CP patients ever reported in China. We observed an increasing incidence and rising costs for CP-related hospitalization. The point prevalence rate of CP was 45.52 per 100000 individuals in 2021. Metabolic-related diseases and pancreatic tumors were among the most common comorbidities among CP patients.

Citation: Cai QY, Tan K, Zhang XL, Han X, Pan JP, Huang ZY, Tang CW, Li J. Incidence, prevalence, and comorbidities of chronic pancreatitis: A 7-year population-based study. *World J Gastroenterol* 2023; 29(30): 4671-4684

URL: <https://www.wjgnet.com/1007-9327/full/v29/i30/4671.htm>

DOI: <https://dx.doi.org/10.3748/wjg.v29.i30.4671>

INTRODUCTION

Chronic pancreatitis (CP) is a fibroinflammatory syndrome characterized by chronic upper abdominal pain and exocrine and endocrine pancreatic insufficiency[1]. Although some cases of CP may begin with one or recurrent bouts of pancreatitis, approximately 50% of CP patients have no history of acute pancreatitis[2,3]. Therefore, for a considerable proportion of patients, the development of CP might be attributable to different pathogeneses. As CP progresses, diabetes mellitus, malnutrition, and pancreatic cancer may develop[3,4], leading to reduced quality of life (QoL) and shortened life expectancy. The current strategies for CP include relieving symptoms, preventing disease progression, and managing complications[5]. CP causes a heavy health burden worldwide, consuming many medical resources due to less effective curative treatments for reversing the course of the disease[1,6,7]. Nevertheless, available epidemiological studies on CP are mainly from registry-based analyses and questionnaire-based surveys in European countries and the United States. Reportedly, the prevalence of CP ranges from 13.5 to 163 cases per 100000 individuals, and the incidence of CP ranges from 5 to 31.7 new cases per 100000 person-years[8-14]. The wide CP prevalence and incidence ranges may be related to the differences in case definitions, settings, patient cohorts, and statistical methods. China is one of the most populous countries in the world. However, only two epidemiological studies on CP in the eastern part of China have been conducted[15,16]. These data were mainly based on one or several databases from hospitals with small sample sizes. Population-based epidemiological data from other regions may provide a better picture of the incidence and prevalence of CP in China[1].

In addition, comorbidities, defined as the cooccurrence of two or more chronic medical conditions in one person[17], usually alter the disease management implications. Multiple comorbidities may reduce QoL and increase the risk of death and the consumption of medical resources[18]. Therefore, comorbidities have become an important part of epidemiological studies for chronic diseases[19]. However, data on the comorbidities of CP are still insufficient[20]. This epidemiological study aimed to characterize the incidence, prevalence, and comorbidities of CP in Sichuan Province in Southwest China from 2015 to 2021 with population-based data.

MATERIALS AND METHODS

Study design and population

Data on CP from 2015 to 2021 were obtained from the Health Information Center of Sichuan Province (HIC-SC), which collects electronic hospitalization summary reports (HSRs) from the electronic medical record systems of all hospitals in Sichuan Province. These records contain encrypted patient identification numbers and data on age, sex, admission and discharge dates, International Classification of Diseases, Tenth Revision (ICD-10) codes, and relevant discharge diagnoses. The HIC-SC has provided data for many scientific studies[21-23], verifying the reliability of the database. The data of permanent residents in Sichuan Province over the study years were obtained from the Sichuan Provincial Bureau of Statistics. This study was approved by the biomedical ethics review committee of West China Hospital, Sichuan University on February 8, 2022 (IRB approval number: 2022-296), and the requirement for informed consent was waived.

Diagnosis and classification of CP

In China, the definition of CP as a continuing inflammatory disease of the pancreas, characterized by irreversible morphological changes and pain and/or permanent loss of function, has been widely accepted[7,24]. In clinical practice, computed tomography (CT) or magnetic resonance imaging (MRI) are usually recommended as first-line tests for patients with clinical symptoms of an inflammatory disorder of the pancreas (such as a previous episode of acute pancreatitis, characteristic pain, and/or maldigestion) because they are universally available and reproducible. The major imaging characteristics of CP include pancreatic atrophy, fibrosis, duct distortion and strictures, stones in pancreatic ducts or multiple calcifications distributed throughout the entire pancreas, *etc.* Endoscopic ultrasound, because of its invasiveness, is used only if the diagnosis is in question after CT or MRI. The diagnosis of CP in some patients is established by histopathological examination after surgery due to unexplained pancreatic masses. Therefore, patients who had a discharge diagnosis of CP in their HSR provided by the HIC-SC with the following ICD-10 codes were included in this study: K86.102 for CP, K86.852 for pancreatic atrophy, K86.811 for pancreatic calcifications, K86.809 for stones in pancreatic ducts, K86.806/807 for duct distortion and strictures, K86.154 for pancreatic fibrosis, K86.201 for pancreatic cysts, K86.804 for pancreatomephraxis, and K86.901/902 for pancreatic masses. Furthermore, this study classified CP according to the following ICD-10 codes: K86.051 for alcoholic CP, K86.153 for autoimmune pancreatitis (AIP), and K86.151 for biliary pancreatitis. Patients with conflicting information, *i.e.*, different birth dates at each admission, were excluded.

Identification of comorbidities

The comorbidities of CP in this study were selected by referring to previous studies[4,13,25]. Data on comorbidities were extracted from the electronic database by identifying their corresponding ICD-10 codes (Table 1).

Epidemiological outcomes

The major outcomes were the incidence and prevalence of CP. Incident cases were defined as patients with a first-time diagnosis of CP. Patients with a diagnosis of CP before the calculated year were excluded from the incidence estimate calculation. Prevalent cases were defined as patients with a diagnosis at some timepoint before the end of 2021. Crude incidence rates were calculated for each year between 2015 and 2021 as the number of incident CP cases divided by the average permanent population in a year (per 100000 person-years). Yearly incidence rates were standardized for age by the direct method using the permanent population of Sichuan Province in the 2020 census as the standard population. The point prevalence rate (December 31, 2021) was calculated as the number of patients who were diagnosed with CP before the end of 2021 divided by the permanent population of Sichuan Province in 2021. Other outcomes were the number of hospitalizations, the hospital length of stay (LoS), and the hospitalization costs. LoS was defined as the total length of hospital stay of the patient within one year. Costs for hospitalization, including total costs and the mean costs per patient, were calculated. Costs were adjusted by the consumer price index for each year to 2021 costs.

Statistical analysis

Data management and computations were performed using Oracle version 11.2.0 (<https://www.oracle.com>) and R version 4.1.3 (R Foundation for Statistical Computing; <https://www.R-project.org/>). Continuous variables are shown as the means \pm SD. Since this was a population-based study including the entire permanent population of Sichuan Province during the observation period, no confidence intervals are provided for the estimates of the incidence or prevalence rates. Statistical analysis, such as the student's *t*-test for continuous variables and the chi-squared test for categorical variables, was used for the comparison of statistics between sexes and age groups. To investigate yearly trends, we performed an analysis of variance tests for the linearity of scaled variables and the Cochran-Armitage trend test for categorical data. A two-sided test with $P < 0.05$ was considered statistically significant.

RESULTS

Data collection

There were a total of 61112 electronic records (38296 individuals) with a diagnosis of CP from 2015 to 2021. Among all the records, 3180 records were excluded due to missing encrypted patient identification numbers (1518 records) and conflicting information (1662 records from 206 individuals). The exclusion of the data resulted in the loss of 5.2% of the

Table 1 The comorbidities and the corresponding International Classification of Diseases, Tenth Revision codes

Comorbidities	ICD-10 codes
Diabetes	E10, E11, E12, E13, E14
Type I diabetes	E10
Type II diabetes	E11
Secondary diabetes	E13, E14
Hypertension	I10, I11, I12, I13, I15, O10
Dyslipidemia	E78
Cholelithiasis	K80, O99.603, K56.3
Fatty liver disease	K76.0, K70.0
Alcoholic fatty liver disease	K70.0
Coronary heart disease	I21, I22, I23, I24, I25
Cerebrovascular disease	I60, I61, I62, I63, I64, I65, I66, I67, I69, G45
Ischemic cerebrovascular disease	I63, I64, I65, I66, I67, G45
Hemorrhagic cerebrovascular disease	I60, I61, I62
Pancreatic cyst	K86.2
Pancreatic pseudocyst	K86.3
Acute pancreatitis	K85
Heart failure	I50, I11.0, I13.0, I13.2
Hyperuricemia	M10, E79
Gastrointestinal bleeding	K92.0, K92.1, K92.2
Liver cirrhosis/fibrosis	K70.3, K74
Alcoholic cirrhosis	K70.3
Pancreatic tumor	C24.102, C25, D13.6, D37.752, D37.703, D37.704
Malignant tumor of the pancreas	C25, C24.102
Malnutrition	E12, E40, E41, E42, E43, E44, E45, E46
Ulcer disease	K25, K26, K27, K28
Gastric ulcer	K25
Duodenal ulcer	K26
Osteoporosis	M80, M81
Inflammatory bowel disease	K50, K51
Crohn's disease	K50
Ulcerative enteritis	K51

ICD: International Classification of Diseases.

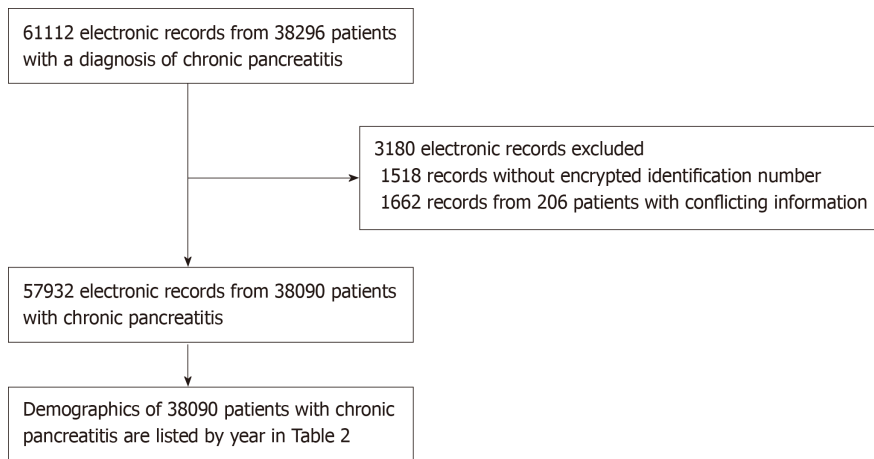
original electronic records and a loss of 0.5% from the original patient cohort. Therefore, 57932 electronic records from 38090 unique patients were ultimately analyzed in this study (Figure 1). Data for 30756 CP patients (80.7% of the cohort) were extracted by the ICD-code K86.102. A total of 3641 CP patients (9.6%) were identified by the ICD-10 code K86.809 (pancreatic calculus). The left 9.7% of the CP patients were included by other ICD-10 codes (K86). Only 397 CP patients (1%) were classified as having alcoholic CP. Sichuan Province is one of the most populous provinces in China, with approximately 83.67 million permanent residents in 2020.

Characteristics of the patients

The demographics of the CP patients with a first diagnosis are presented in Table 2 by calendar year. The number of new cases increased each year from 2015 to 2021, with a significant upward trend ($P < 0.001$). There were 1.56-fold more male patients than female patients. The mean age of the patients at CP diagnosis was 57.83 years, with males (55.87 years) being younger than females (60.11 years) ($P < 0.001$). More than 60% of the patients diagnosed each year were aged 15-64

Table 2 Demographics of chronic pancreatitis patients with a first diagnosis by calendar year

	2015	2016	2017	2018	2019	2020	2021	P value
Electronic records, <i>n</i>	3739	5760	7688	9488	9865	10383	11009	< 0.001
New case, <i>n</i>	3088	4334	5299	5945	5987	6475	6962	< 0.001
Mean hospitalizations per patient, <i>n</i>	1.21	1.16	1.19	1.20	1.17	1.16	1.15	0.097
Sex, %								
Male	62.01	59.23	60.52	59.73	60.23	62.63	62.90	0.282
Female	37.99	40.77	39.48	40.27	39.77	37.37	37.10	
Age, yr, mean \pm SD	57.48 \pm 15.78	58.01 \pm 15.31	58.28 \pm 15.59	58.84 \pm 15.81	58.27 \pm 15.77	57.52 \pm 15.99	56.57 \pm 16.57	0.387
Male	55.87 \pm 15.35	56.58 \pm 15.19	56.85 \pm 15.17	57.37 \pm 15.62	56.74 \pm 15.38	56.10 \pm 15.58	54.98 \pm 16.41	0.415
Female	60.11 \pm 16.12	60.09 \pm 15.25	60.48 \pm 15.96	61.01 \pm 15.86	60.60 \pm 16.06	59.88 \pm 16.38	59.27 \pm 16.51	0.389
Age group, %								
0-14	0.39	0.35	0.51	0.64	0.33	0.34	0.39	0.902
15-64	64.57	63.99	63.37	60.52	61.78	63.83	64.97	0.820
≥ 65	35.04	35.65	36.12	38.84	37.88	35.83	34.65	0.807
Ethnicity, %								
Han	94.36	94.78	95.32	95.31	94.27	94.18	95.17	0.722
Yi	1.33	1.80	1.91	1.55	2.04	2.12	2.08	0.515
Zang	1.69	2.03	1.83	2.27	2.24	2.30	1.74	0.923
Qiang	0.36	0.39	0.47	0.37	0.45	0.83	0.43	0.646
Other	2.27	0.99	0.47	0.50	1.00	0.57	0.57	0.007



DOI: 10.3748/wjg.v29.i30.4671 Copyright ©The Author(s) 2023.

Figure 1 Flowchart of the inclusion and exclusion processes. A total of 61112 electronic records from 38296 patients with a diagnosis of chronic pancreatitis were retrieved from the Health Information Center of Sichuan Province. A total of 3180 records were excluded due to missing encrypted patient identification numbers (1518 records) and conflicting information (1662 records from 206 individuals). A total of 57932 electronic records from 38090 unique patients with chronic pancreatitis were ultimately included in this study.

years, and the proportion of each group remained stable over time (Table 2). Similar to the population ratio, the component ratio of the Han Chinese was the highest (94.92%) in CP patients, although Sichuan is a multiethnic province.

Incidence

The mean standardized incidence of CP was 6.81 per 100000 person-years, and the incidence of CP increased yearly during the study period ($P < 0.001$), from 4.03 per 100000 person-years in 2015 to 8.27 per 100000 person-years in 2021 (Figure 2). The mean incidence of CP in males was 7.95 per 100000 person-years, which was significantly higher than that in females (5.13 per 100000 person-years) ($P < 0.001$). Both sexes presented similar upward trends ($P < 0.001$) (Figure 3A).

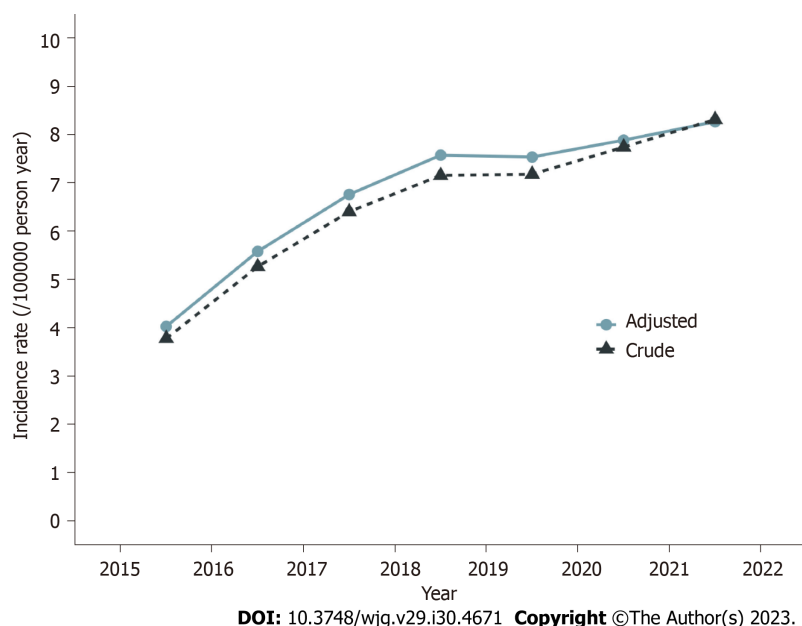


Figure 2 Incidence trends of chronic pancreatitis. Crude and age-adjusted annual incidence trends of chronic pancreatitis from 2015 to 2021 in Sichuan Province, China (per 100000 person-years).

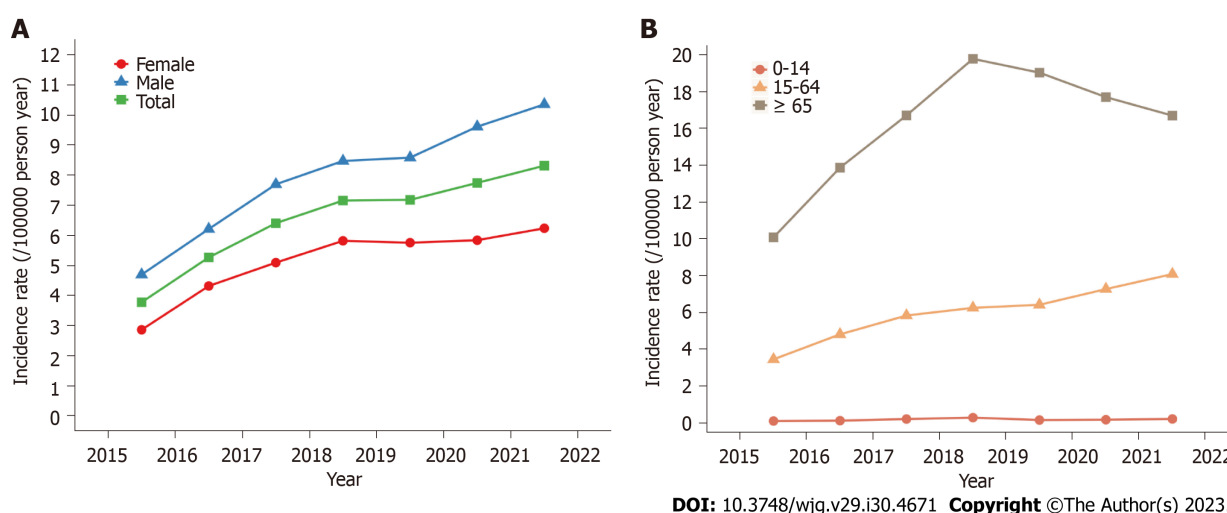


Figure 3 Sex- and age-grouped incidence of chronic pancreatitis. A and B: The crude incidence of chronic pancreatitis in the population grouped by sex (A) and age (B) (per 100000 person-years) from 2015 to 2021.

For males, the incidence of CP was 4.70 per 100000 person-years in 2015 and 10.36 per 100000 person-years in 2021; for females, the incidence of CP was 2.86 per 100000 person-years in 2015 and 6.24 per 100000 person-years in 2021. The highest CP incidence (16.27 per 100000 person-years) was observed in patients aged ≥ 65 years, with an upward trend from 10.08 per 100000 person-years in 2015 to 16.70 per 100000 person-years in 2021 ($P < 0.001$) (Figure 3B). Individuals aged 14 years or younger showed the lowest CP incidence (0.17 per 100000 person-years), which remained stable during the 7 years ($P = 0.830$) (Figure 3B). The seven-year mean incidence for the 15-64-year age group was 6.01 per 100000 person-years, with an increase from 3.45 per 100000 person-years in 2015 to 8.08 per 100000 person-years in 2021 ($P < 0.001$) (Figure 3B).

Prevalence

A total of 38090 individuals were diagnosed with CP in Sichuan Province during the study period. The age distribution of the CP patients up to 2021 is shown in Figure 4A. Among all the patients, 23280 (61.12%) were men, and 14810 (38.88%) were women ($P < 0.001$). The point prevalence of CP was 45.52 per 100000 individuals in 2021 for the total population, 55.04 per 100000 individuals for the male population, and 35.78 per 100000 individuals for the female population ($P < 0.001$). The prevalence of CP was 1.53 times higher [95% confidence interval (CI): 1.51-1.57; $P < 0.001$] for men than for women. Individuals aged 65 years or older had the highest prevalence of CP (113.38 per 100000 individuals), with a prevalence of 127.58 per 100000 individuals for men and 100.03 per 100000 individuals for women ($P < 0.001$) (Figure 4B).

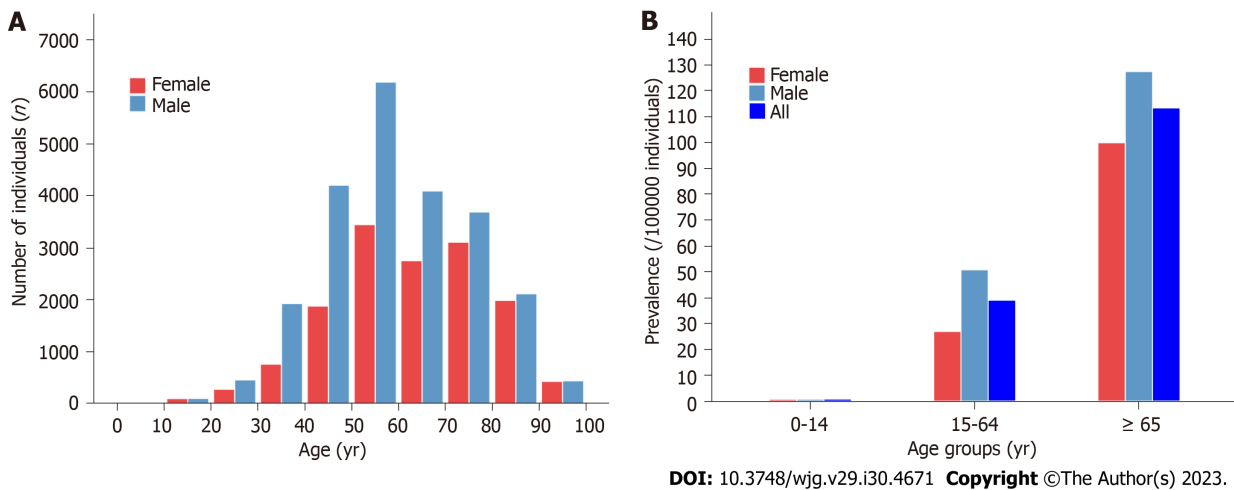


Figure 4 The prevalence of chronic pancreatitis. A and B: The age distribution of chronic pancreatitis patients (A) and the prevalence of chronic pancreatitis by sex and age groups (B) in 2021.

For individuals aged between 15 and 64 years, the prevalence of CP was 39.11 per 100000 individuals, with a prevalence of 50.86 per 100000 individuals for men and 27.00 per 100000 individuals for women ($P < 0.001$) (Figure 4B). The prevalence of CP was 2.90 times higher (95%CI: 2.84-2.96; $P < 0.001$) for individuals aged 65 years or older than for individuals aged between 15 and 64 years. Individuals aged 14 years or younger had the lowest prevalence of CP (0.81 per 100000 individuals), with a prevalence of 0.82 per 100000 individuals for boys and 0.80 per 100000 individuals for girls ($P = 1$) (Figure 4B).

Prevalence of comorbid conditions

Diabetes (26.32%) was the most common comorbidity in CP patients, and patients with diabetes were similar in age to the overall cohort (Table 3). Metabolic-related diseases, including hypertension (21.51%), cholelithiasis (16.79%), dyslipidemia (16.70%), and fatty liver diseases (12.39%), were also common comorbidities among CP patients. The incidence of acute exacerbations of CP was 5.08% in all CP patients, with an incidence of 6.35% in males and 3.07% in females. A total of 2.65% of the CP patients were also diagnosed with pancreatic tumors, and 2.36% were diagnosed with malignant tumors of the pancreas.

Disease burden of CP

The number of CP-related hospitalizations increased approximately 2-fold, from 3739 in 2015 to 11009 in 2021 ($P < 0.001$) (Figure 5A). The LoS per CP patient decreased from 14.52 d in 2016 to 12.38 d in 2021 ($P = 0.008$) (Figure 5B). The total costs for CP-related hospitalizations for CP patients over the study period were 667.96 million yuan, with an average of 17538 yuan per patient. Total costs for CP-related hospitalizations increased from 50.60 million yuan in 2015 to 124.16 million in 2021 ($P < 0.001$) (Figure 5C), while the costs per patient decreased from 16387 yuan in 2015 to 13986 yuan in 2021 ($P = 0.024$) (Figure 5D).

DISCUSSION

We conducted a population-based study on the epidemiology of CP in Sichuan Province, China, from 2015 to 2021. This study showed that the mean incidence of CP was 6.81 per 100000 person-years in the last 7 years, and the point prevalence of CP was 45.52 per 100000 individuals in 2021 for the total population in Sichuan Province. The incidence and prevalence of CP increased with age and were significantly higher in males than in females over the study years. Metabolic-related diseases, including diabetes (26.32%), hypertension (21.51%), cholelithiasis (16.79%), dyslipidemia (16.70%), and fatty liver disease (12.39%), were common comorbidities in CP patients. In addition, 2.65% of the CP patients were diagnosed with pancreatic tumors. During the 7-year period, CP-related hospitalizations increased approximately 2-fold, and the overall hospitalization cost of CP increased by 1.4-fold. However, the LoS and the costs per CP patient decreased over the study years.

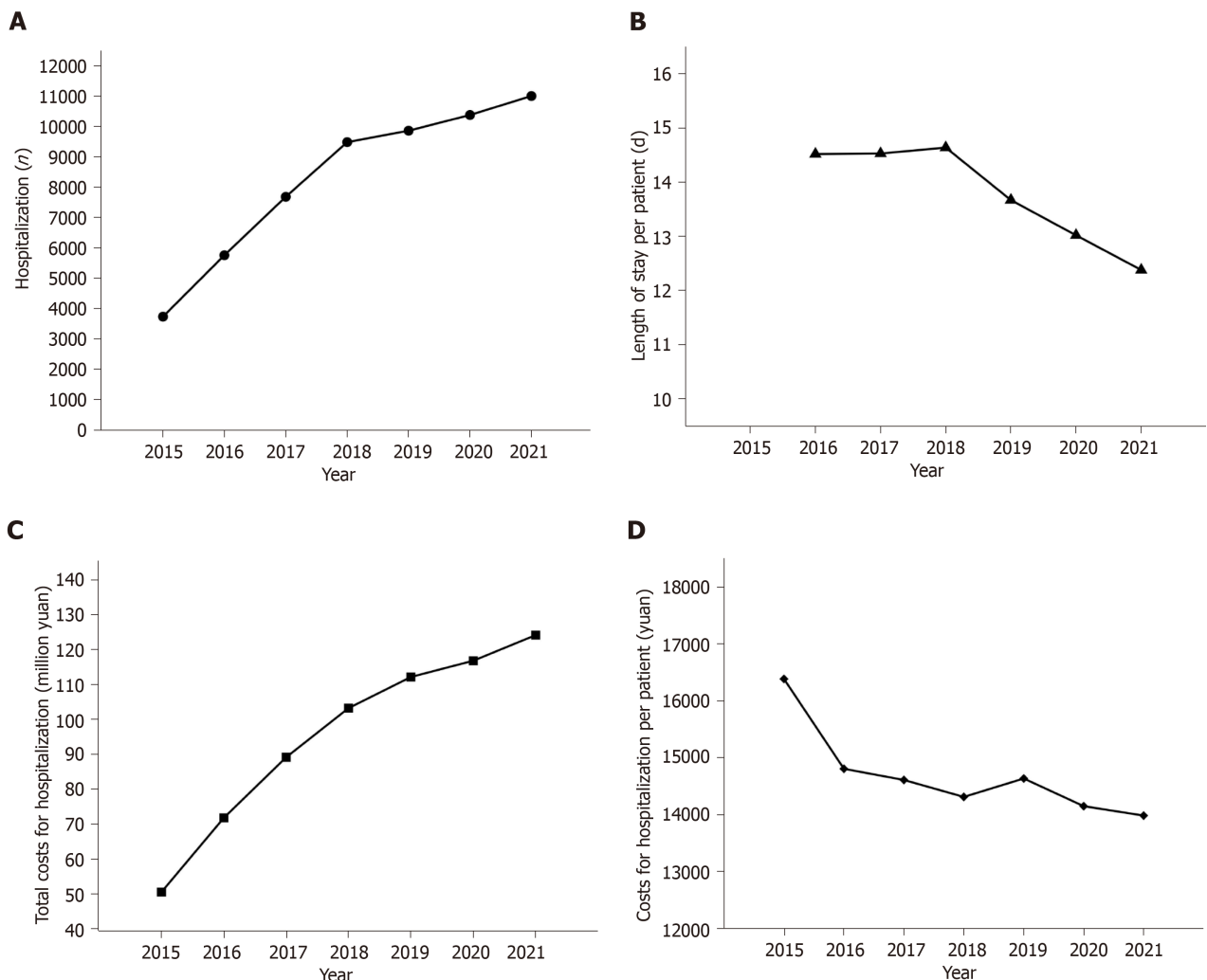
It may be valuable to improve epidemiological data of CP in the southwest area of China due to the rapid economic and societal development of the country. The first population-based epidemiological study of CP reported a mean CP incidence of 6.81 per 100000 person-years in Sichuan Province in the last 7 years. In other words, Sichuan Province has an average of 5652 new cases of CP every year. Thus, although hospitalization costs per patient decreased yearly, overall hospitalization costs still increased year by year. The overall hospitalization cost of CP increased by 1.4 times during the 7-year period. Although this study was analyzed with big data, the incidence rate may be underestimated because the data only covered inpatients with CP, and outpatients with CP were not included. A variety of databases have been used for the epidemiological analysis of CP[8,9,14,26], but it is still difficult to accurately describe the epidemic status of CP

Table 3 Prevalence of comorbidities in chronic pancreatitis patients

Diseases	Total cohort, <i>n</i> = 38090		Males, <i>n</i> = 23280		Females, <i>n</i> = 14810		<i>P</i> value
	<i>n</i> , %	Age, yr, mean ± SD	<i>n</i> , %	Age, yr, mean ± SD	<i>n</i> , %	Age, yr, mean ± SD	
Total	100.00	57.58 ± 15.79	100.00	56.26 ± 15.25	100.00	59.99 ± 16.44	-
Diabetes	26.32	56.57 ± 14.60	28.94	55.43 ± 14.03	22.20	59.14 ± 15.51	< 0.001
Type I diabetes	0.79	45.33 ± 15.11	0.81	47.32 ± 12.81	0.76	42.23 ± 17.70	0.591
Type II diabetes	21.84	58.04 ± 14.26	23.73	56.78 ± 13.89	18.87	60.75 ± 14.66	< 0.001
Secondary diabetes	2.05	50.04 ± 13.24	2.71	49.35 ± 12.40	1.01	53.27 ± 16.27	< 0.001
Hypertension	21.51	66.32 ± 14.41	20.23	64.27 ± 14.43	23.51	69.36 ± 13.82	< 0.001
Cholelithiasis	16.79	62.33 ± 16.14	14.95	60.23 ± 15.37	19.67	64.90 ± 16.68	< 0.001
Dyslipidemia	16.70	51.49 ± 14.28	16.76	48.57 ± 13.12	16.61	56.01 ± 14.81	0.708
Cerebrovascular disease	12.76	69.75 ± 13.34	12.19	68.52 ± 13.55	13.65	71.60 ± 12.79	< 0.001
Ischemic cerebrovascular disease	11.75	69.55 ± 13.38	11.17	68.54 ± 13.57	12.65	71.09 ± 12.92	< 0.001
Hemorrhagic cerebrovascular disease	0.34	64.05 ± 14.42	0.43	62.63 ± 14.55	0.20	69.39 ± 12.79	< 0.001
Fatty liver disease	12.39	49.53 ± 13.50	13.46	47.20 ± 12.63	10.72	54.28 ± 13.96	< 0.001
Alcoholic fatty liver disease	0.35	54.07 ± 12.45	0.53	54.32 ± 12.38	0.07	50.50 ± 13.39	< 0.001
Coronary heart disease	10.07	72.15 ± 12.77	8.37	71.13 ± 13.10	12.75	73.27 ± 12.31	< 0.001
Heart failure	5.27	74.15 ± 13.38	4.72	72.62 ± 13.98	6.14	76.06 ± 12.33	< 0.001
Acute pancreatitis	5.08	51.38 ± 15.68	6.35	52.17 ± 14.18	3.07	48.80 ± 19.57	< 0.001
Hyperuricemia	4.93	56.86 ± 17.25	6.42	55.07 ± 16.87	2.59	64.28 ± 16.85	< 0.001
Ulcer disease	4.68	60.16 ± 14.54	5.28	59.30 ± 14.06	3.73	62.22 ± 15.46	< 0.001
Gastric ulcer	2.17	60.34 ± 13.91	2.40	59.36 ± 13.34	1.80	62.60 ± 14.92	< 0.001
Duodenal ulcer	1.30	59.15 ± 14.46	1.65	58.53 ± 14.65	0.74	61.28 ± 13.62	< 0.001
Liver cirrhosis/fibrosis	3.49	58.70 ± 13.92	4.35	57.05 ± 13.12	2.13	65.09 ± 15.04	< 0.001
Alcoholic cirrhosis	0.72	53.23 ± 10.21	1.15	53.31 ± 10.19	0.05	49.60 ± 10.54	< 0.001
Pancreatic pseudocyst	3.45	52.55 ± 14.28	4.46	51.57 ± 12.92	1.85	56.38 ± 18.17	< 0.001
Malnutrition	3.36	64.04 ± 16.53	3.80	62.74 ± 15.52	2.67	66.86 ± 18.23	< 0.001
Gastrointestinal bleeding	2.93	61.76 ± 16.38	3.46	59.78 ± 15.84	2.10	67.13 ± 16.64	< 0.001
Pancreatic tumor	2.65	61.43 ± 12.13	2.97	61.27 ± 11.77	2.15	61.79 ± 12.89	< 0.001
Malignant tumor of pancreas	2.36	61.74 ± 11.99	2.64	61.50 ± 11.67	1.91	62.27 ± 12.65	< 0.001
Osteoporosis	2.03	75.28 ± 13.19	1.37	70.13 ± 13.89	3.06	78.02 ± 11.94	< 0.001
Inflammatory bowel disease	0.14	56.13 ± 15.76	0.13	56.75 ± 14.03	0.17	55.43 ± 17.76	0.388
Crohn's disease	0.03	56.40 ± 14.07	0.03	58.67 ± 10.76	0.03	53.00 ± 19.37	1
Ulcerative enteritis	0.12	56.00 ± 16.05	0.11	56.15 ± 14.56	0.14	55.83 ± 17.90	0.429

due to the limitations of various databases. There may be many CP outpatients, but if their condition is not severe enough to require hospitalization, the medical costs and the disease burden would be relatively low, and the epidemiological significance may not be very important. Reportedly, the rates of harmful drinking behaviors and smoking, which may be risk factors for CP, have increased in Chinese individuals in the last 10 years[27,28]. In contrast, the incidences of CP remained stable or even decreased yearly in recent years in the United States and Denmark, indicating that the decline in CP incidence might be due to the decrease in tobacco and alcohol consumption in both countries[8,14,29]. However, it was difficult to evaluate the factors related to the increasing incidence of CP in this study because electronic HSRs did not include risk factors associated with CP. CT and MRI have become universally available in hospitals at all levels in Sichuan Province, China. This greatly enhances the detection rate of CP and may partly contribute to the increasing CP incidence rate.

The point prevalence of CP was 45.52 per 100000 individuals in 2021 for the total population in Sichuan Province. The prevalence of CP was 39.11 and 113.38 per 100000 individuals for the population aged between 15 and 64 years and the population aged 65 years or older, respectively. The current results are consistent with those of studies in Minnesota



DOI: 10.3748/wjg.v29.i30.4671 Copyright ©The Author(s) 2023.

Figure 5 Disease burden of chronic pancreatitis. A: Annual number of chronic pancreatitis-associated hospitalizations; B: Mean length of stay per patient; C: Total costs for hospitalization; D: Costs for hospitalization per patient. Costs were adjusted by the consumer price index every year to 2021 costs (yuan).

(41.76/100000 individuals), Japan (52.4/100000 individuals), and Spain (49.3/100000 individuals), which were all based on questionnaire-based surveys[10,11,30]. In contrast, the prevalence of CP was considerably higher in register-based studies covering inpatients as well as outpatients[8,9,14]. Based on insurance claims databases, Machicado *et al*[9] and Sellers *et al*[14] reported similar results for the prevalence of CP in adults in America, which was 98.7/100000 individuals (2001-2013) and 91.9/100000 individuals (2007-2014), respectively. Using nationwide health care registries over a long period (1994–2018), Olesen *et al*[8] estimated the prevalence of CP at 153.9/100000 individuals in Denmark. This discrepancy may be explained by differences in study designs or by true differences in the CP prevalence across regions. Compared to the multicenter study in 2003, our current study adds to the prevalence data on CP over the past decades and verifies the upward trend in the prevalence of CP[15]. The increase in the CP prevalence could be explained by the increasing CP incidence and improved prognosis and life expectancy of CP patients[31–33].

Both the incidence and prevalence of CP in males were significantly higher than those in females over the study years. The prevalence for men was 1.53 times higher than that for women. Of all CP patients, 61.12% were men and 38.88% were women. Both the incidence and prevalence of CP were higher among men than women in all age groups, which was consistent with most previous studies[8,11,15,34,35]. This difference may be due to higher alcohol and tobacco exposure and increased genetic susceptibility to alcoholic CP among men[36,37]. The male hemizygous CLDN2 genotype and the female homozygous CLDN2 genotype are known to confer an amplified risk of pancreatitis together with alcohol use, and the frequency of the male hemizygous CLDN2 genotype (0.26) is much higher than that of the female homozygous CLDN2 genotype (0.07); thus, males have a higher genetic susceptibility to alcoholic CP than females[37]. In addition, the prevalence and incidence of CP were the highest among elderly individuals compared with young and middle-aged people in our study. These results are also similar to those of previous studies, suggesting that the incidence and prevalence of CP increases with aging[8,14]. Although the results might represent the prevalence of CP, it is undeniable that there was bias. In terms of the inpatient database, elderly people had the highest rate of hospitalization, which was accompanied by a higher detection rate of CP. In comparison, the detection rates of CP might be lower in other age groups, leading to an underestimation of the incidence and prevalence of CP.

Table 4 Available studies on comorbidities of chronic pancreatitis

Region	Study design	Study period	Total CP patients	Frequent comorbidities compared with controls	Ref.
Denmark	Nationwide retrospective cohort study	1995-2010	11972	Cerebrovascular disease, chronic pulmonary disease, ulcer disease, diabetes, chronic renal disease, and pancreatic cancer	[4]
United States and Denmark	Cross-sectional, multicenter prospective study	Not available	171	Anxiety and depression	[40]
United States	Retrospective cohort study	2015-2020	63230	Hypertension, diabetes, and myocardial Infarction	[41]
United States	Ongoing longitudinal cohort study	2017-2022	488	Depression, anxiety, sleep disturbance, and physical disability	[42]
United States	Cohort study (NAPS2 cohort)	2000-2014	1024	Gallstones, diabetes, heart disease/heart attack/stroke, liver disease, renal disease, or prior history of cancer	[25]
United Kingdom	Cohort Study (the United Kingdom Biobank cohort)	2000-2020	1027	Gallstones, hyperlipidemia, diabetes, hypertriglyceridemia, hypercalcemia, pancreatic cancer, celiac, and ulcerative colitis	[13]
Canada	Retrospective study	2007-2014	75744	Anxiety and depression	[43]
China	Population-based cohort study	2000-2011	15848	Urolithiasis	[44]
China	Population-based cohort study	2000-2011	17810	Subsequent pyogenic liver abscess	[45]
China	Population-based cohort study	2000-2011	16672	Cerebrovascular disease	[46]
China	Population-based cohort study	2000-2011	17778	Deep vein thrombosis and pulmonary embolism	[20]
China	Population-based cohort study	2000-2011	17796	Inflammatory bowel disease	[47]
China	Prospective observational study	2019-2021	720	Anxiety and depression	[48]

As comorbidity, diabetes was reported in 26.32% of CP patients in this study. The prevalence of diabetes in CP patients reported in the previous literature was 15.2%-41.5%[4,13,25]. The high comorbidity of CP with diabetes suggests the importance of the identification of post-pancreatitis diabetes mellitus, which might be greatly different from type 2 diabetes mellitus in its manifestation and treatment. In addition, hypertension (21.51%), cholelithiasis (16.79%), and fatty liver disease (12.39%) were also common comorbidities in CP patients. A cohort study of the United Kingdom Biobank reported an even higher prevalence of gallstones (32.4%), hyperlipidemia (34.7%), and pancreatic cancer (4.7%) in CP patients and a strong association between CP and essential hypertension[13]. In the same cohort (United Kingdom Biobank), a case-control study reported that CP was associated with a significantly higher risk of pancreatic cancer in patients within the first 3 years[38]. These comorbidities may be explained by shared etiologies resulting from general exposure to risk factors such as tobacco use and alcohol consumption among CP patients. However, it is also possible that some of these comorbidities are involved in the pathogenesis of CP development, and some comorbidities may be complications caused by CP. Prospective studies, including longitudinal cohort studies and randomized control trials, may provide more definitive evidence on potential associations with multimorbidity. As shown in Table 4, different comorbidities were reported to be associated with CP in European, American, and East Asian countries. This may be related to different regions, times, and types of research. In addition, the pattern of comorbidities of CP is still under exploration, and the comorbidities reported by the abovementioned studies are similar to our findings. Smaller sample sizes and more accurate and complete diagnoses of diseases in cohort studies as well as different study inclusion criteria could explain the discrepancy between cohort and register-based studies.

AIP represents < 5%-10% of pancreatitis cases and has a smaller prevalence of approximately 1-2/100000 individuals [39]. In the design of this study, AIP was classified as a type of CP. However, data on AIP were not extracted from the electronic HSRs because there is no special ICD-10 code for AIP. Moreover, only 1% of CP patients were classified as having alcoholic CP, which might be underestimated because doctors may not have paid enough attention to alcoholic CP when they filled out the electronic HSRs. This study suggests some improvements for the HIC-SC to enhance the quality of electronic HSR completion.

CONCLUSION

The yearly incidence of CP increased, along with the absolute number of CP patients and associated costs for hospitalization in Sichuan Province over the study period. The current work shows that CP remains a heavy burden on patients and the healthcare system. The implication of the high prevalence of diabetes (26.32%) in CP patients may vary with different people.

ARTICLE HIGHLIGHTS

Research background

Chronic pancreatitis (CP) is a fibroinflammatory syndrome leading to reduced quality of life and shortened life expectancy. Population-based estimates of the prevalence and incidence of CP in China are scarce.

Research motivation

Accurate epidemiological estimates of CP are vital in shaping health resource allocation and medical provider training priorities.

Research objectives

To evaluate the prevalence and time trends of the incidence of CP and describe the comorbidities and disease burden of CP in Sichuan Province, China.

Research methods

Data on CP from 2015 to 2021 were obtained from the Health Information Center of Sichuan Province. During the study period, a total of 38090 individuals were diagnosed with CP in Sichuan Province. The yearly incidence rate and point prevalence rate (December 31, 2021) of CP were calculated. The prevalence of comorbid conditions in CP patients was estimated. The annual number of CP-related hospitalizations, hospital length of stay, and costs for hospitalization for CP were evaluated. Yearly incidence rates were standardized for age by the direct method using the permanent population of Sichuan Province in the 2020 census as the standard population. An analysis of variance test for the linearity of scaled variables and the Cochran-Armitage trend test for categorical data were performed to investigate the yearly trends, and a two-sided test with $P < 0.05$ was considered statistically significant.

Research results

The 38090 CP patients comprised 23280 males and 14810 females. The mean age of patients at CP diagnosis was 57.83 years, with males (55.87 years) being younger than females (60.11 years) ($P < 0.001$). The mean incidence rate of CP during the study period was 6.81 per 100000 person-years, and the incidence of CP increased each year, from 4.03 per 100000 person-years in 2015 to 8.27 per 100000 person-years in 2021 ($P < 0.001$). The point prevalence rate of CP in 2021 was 45.52 per 100000 individuals for the total population, with rates of 55.04 per 100000 individuals for men and 35.78 per 100000 individuals for women ($P < 0.001$). Individuals aged 65 years or older had the highest prevalence of CP (113.38 per 100000 individuals) ($P < 0.001$). Diabetes (26.32%) was the most common comorbidity in CP patients. The number of CP-related hospitalizations increased from 3739 in 2015 to 11009 in 2021. The total costs for CP-related hospitalizations for CP patients over the study period were 667.96 million yuan, with an average of 17538 yuan per patient.

Research conclusions

The yearly incidence of CP increased in Sichuan Province, along with the absolute number of CP patients and associated costs for hospitalization between 2015 and 2021. The point prevalence rate of CP in 2021 was 45.52/100000 individuals for the total population. Diabetes (26.32%), other metabolic-related diseases, and pancreatic cancer are among the common comorbidities in CP patients. The current work shows that CP continues to place a heavy burden on patients and the healthcare system.

Research perspectives

Further studies are needed to identify CP and its comorbidities earlier, triggering potentially preventive management to relieve the disease burden.

ACKNOWLEDGEMENTS

The authors are grateful to the staff of the Department of Gastroenterology, West China Hospital, Sichuan University, and the Health Information Center of Sichuan Province for their valuable assistance in this work.

FOOTNOTES

Author contributions: Cai QY analyzed the data and wrote the manuscript; Tan K and Zhang XL collected the data; Han X established the database and cleaned the data; Pan JP managed the data; Huang ZY analyzed the data; Tang CW designed the study and revised the manuscript; Li J designed the study and revised the manuscript.

Supported by the Special Project on “Digital Development of Health” of the Health Information Center of Sichuan Province, China, No. 2021ZXKY06007; and the National Natural Science Fund of China, No. 82241054 and 82000613.

Institutional review board statement: This study was approved by the biomedical ethics review committee of West China Hospital,

Sichuan University.

Informed consent statement: The requirement for informed consent was waived in this study.**Conflict-of-interest statement:** All the authors report no relevant conflicts of interest for this article.**Data sharing statement:** No additional data are available.**STROBE statement:** The authors have read the STROBE Statement checklist of items, and the manuscript was prepared and revised according to the STROBE Statement checklist of items.**Open-Access:** This article is an open-access article that was selected by an in-house editor and fully peer-reviewed by external reviewers. It is distributed in accordance with the Creative Commons Attribution NonCommercial (CC BY-NC 4.0) license, which permits others to distribute, remix, adapt, build upon this work non-commercially, and license their derivative works on different terms, provided the original work is properly cited and the use is non-commercial. See: <https://creativecommons.org/licenses/by-nc/4.0/>**Country/Territory of origin:** China**ORCID number:** Qiu-Yu Cai 0000-0002-0400-5314; Zhi-Yin Huang 0000-0002-8322-1768; Cheng-Wei Tang 0000-0002-2289-8240; Jing Li 0000-0002-6929-409X.**S-Editor:** Wang JJ**L-Editor:** A**P-Editor:** Wang JJ

REFERENCES

- Beyer G, Habtezion A, Werner J, Lerch MM, Mayerle J. Chronic pancreatitis. *Lancet* 2020; **396**: 499-512 [PMID: 32798493 DOI: 10.1016/S0140-6736(20)31318-0]
- Hori Y, Vege SS, Chari ST, Gleeson FC, Levy MJ, Pearson RK, Petersen BT, Kendrick ML, Takahashi N, Truty MJ, Smoot RL, Topazian MD. Classic chronic pancreatitis is associated with prior acute pancreatitis in only 50% of patients in a large single-institution study. *Pancreatol* 2019; **19**: 224-229 [PMID: 30795927 DOI: 10.1016/j.pan.2019.02.004]
- Vege SS, Chari ST. Chronic Pancreatitis. *N Engl J Med* 2022; **386**: 869-878 [PMID: 35235728 DOI: 10.1056/NEJMc1809396]
- Bang UC, Benfield T, Hyldstrup L, Bendtsen F, Beck Jensen JE. Mortality, cancer, and comorbidities associated with chronic pancreatitis: a Danish nationwide matched-cohort study. *Gastroenterology* 2014; **146**: 989-994 [PMID: 24389306 DOI: 10.1053/j.gastro.2013.12.033]
- Cohen SM, Kent TS. Etiology, Diagnosis, and Modern Management of Chronic Pancreatitis: A Systematic Review. *JAMA Surg* 2023; **158**: 652-661 [PMID: 37074693 DOI: 10.1001/jamasurg.2023.0367]
- Masamune A, Kikuta K, Kume K, Hamada S, Tsuji I, Takekuma Y, Shimosegawa T, Okazaki K; Japan Pancreas Society. Nationwide epidemiological survey of chronic pancreatitis in Japan: introduction and validation of the new Japanese diagnostic criteria 2019. *J Gastroenterol* 2020; **55**: 1062-1071 [PMID: 32676800 DOI: 10.1007/s00535-020-01704-9]
- Gardner TB, Adler DG, Forsmark CE, Sauer BG, Taylor JR, Whitcomb DC. ACG Clinical Guideline: Chronic Pancreatitis. *Am J Gastroenterol* 2020; **115**: 322-339 [PMID: 32022720 DOI: 10.14309/ajg.0000000000000535]
- Olesen SS, Mortensen LH, Zinck E, Becker U, Drewes AM, Nøjgaard C, Novovic S, Yadav D, Tolstrup JS. Time trends in incidence and prevalence of chronic pancreatitis: A 25-year population-based nationwide study. *United European Gastroenterol J* 2021; **9**: 82-90 [PMID: 33176616 DOI: 10.1177/2050640620966513]
- Machicado JD, Dudekula A, Tang G, Xu H, Wu BU, Forsmark CE, Yadav D. Period prevalence of chronic pancreatitis diagnosis from 2001-2013 in the commercially insured population of the United States. *Pancreatol* 2019; **19**: 813-818 [PMID: 31350077 DOI: 10.1016/j.pan.2019.07.003]
- Domínguez-Muñoz JE, Lucendo A, Carballo LF, Iglesias-García J, Tenías JM. A Spanish multicenter study to estimate the prevalence and incidence of chronic pancreatitis and its complications. *Rev Esp Enferm Dig* 2014; **106**: 239-245 [PMID: 25075654]
- Hirota M, Shimosegawa T, Masamune A, Kikuta K, Kume K, Hamada S, Kanno A, Kimura K, Tsuji I, Kuriyama S; Research Committee of Intractable Pancreatic Diseases. The seventh nationwide epidemiological survey for chronic pancreatitis in Japan: clinical significance of smoking habit in Japanese patients. *Pancreatol* 2014; **14**: 490-496 [PMID: 25224249 DOI: 10.1016/j.pan.2014.08.008]
- Capurso G, Archibugi L, Pasquali P, Aceti A, Balducci P, Bianchi P, Buono F, Camerucci S, Cantarini R, Centofanti S, Colantonio P, Cremaschi R, Crescenzi S, Di Mauro C, Di Renzi D, Filabozzi A, Fiorillo A, Giancaspro G, Giovannetti P, Lanna G, Medori C, Merletti E, Nunnari E, Paris F, Pavone M, Piacenti A, Rossi A, Scamuffa MC, Spinelli G, Taborchi M, Valente B, Villanova A, Chiriatti A, Delle Fave G. Prevalence of chronic pancreatitis: Results of a primary care physician-based population study. *Dig Liver Dis* 2017; **49**: 535-539 [PMID: 28089214 DOI: 10.1016/j.dld.2016.12.024]
- Spagnolo DM, Greer PJ, Ohlsen CS, Mance S, Ellison M, Breze C, Busby B, Whitcomb DC, Haupt M. Acute and Chronic Pancreatitis Disease Prevalence, Classification, and Comorbidities: A Cohort Study of the UK BioBank. *Clin Transl Gastroenterol* 2022; **13**: e00455 [PMID: 35060944 DOI: 10.14309/ctg.0000000000000455]
- Sellers ZM, MacIsaac D, Yu H, Dehghan M, Zhang KY, Bensen R, Wong JJ, Kin C, Park KT. Nationwide Trends in Acute and Chronic Pancreatitis Among Privately Insured Children and Non-Elderly Adults in the United States, 2007-2014. *Gastroenterology* 2018; **155**: 469-478.e1 [PMID: 29660323 DOI: 10.1053/j.gastro.2018.04.013]
- Wang LW, Li ZS, Li SD, Jin ZD, Zou DW, Chen F. Prevalence and clinical features of chronic pancreatitis in China: a retrospective multicenter analysis over 10 years. *Pancreas* 2009; **38**: 248-254 [PMID: 19034057 DOI: 10.1097/MPA.0b013e31818f6ac1]

- 16 Li JN, Lai YM, Qian JM, Guo T, Lü H, Tang XY. Trends in etiologies of chronic pancreatitis within 20 years: analysis of 636 cases. *Chin Med J (Engl)* 2011; **124**: 3556-3559 [PMID: 22340177]
- 17 Beard JR, Officer A, de Carvalho IA, Sadana R, Pot AM, Michel JP, Lloyd-Sherlock P, Epping-Jordan JE, Peeters GMEEG, Mahanani WR, Thiyagarajan JA, Chatterji S. The World report on ageing and health: a policy framework for healthy ageing. *Lancet* 2016; **387**: 2145-2154 [PMID: 26520231 DOI: 10.1016/S0140-6736(15)00516-4]
- 18 Emerging Risk Factors Collaboration, Di Angelantonio E, Kaptoge S, Wormser D, Willeit P, Butterworth AS, Bansal N, O'Keefe LM, Gao P, Wood AM, Burgess S, Freitag DF, Pennells L, Peters SA, Hart CL, Håheim LL, Gillum RF, Nordestgaard BG, Psaty BM, Yeap BB, Knuiman MW, Nietert PJ, Kauhanen J, Salonen JT, Kuller LH, Simons LA, van der Schouw YT, Barrett-Connor E, Selmer R, Crespo CJ, Rodriguez B, Verschuren WM, Salomaa V, Svärdsudd K, van der Harst P, Björkelund C, Wilhelmsen L, Wallace RB, Brenner H, Amouyel P, Barr EL, Iso H, Onat A, Trevisan M, D'Agostino RB Sr, Cooper C, Kavousi M, Welin L, Roussel R, Hu FB, Sato S, Davidson KW, Howard BV, Leening MJ, Leening M, Rosengren A, Dörr M, Deeg DJ, Kiechl S, Stehouwer CD, Nissinen A, Giampaoli S, Donfrancesco C, Kromhout D, Price JF, Peters A, Meade TW, Casiglia E, Lawlor DA, Gallacher J, Nagel D, Franco OH, Assmann G, Dagenais GR, Jukema JW, Sundström J, Woodward M, Brunner EJ, Khaw KT, Wareham NJ, Whitsel EA, Njølstad I, Hedblad B, Wassertheil-Smoller S, Engström G, Rosamond WD, Selvin E, Sattar N, Thompson SG, Danesh J. Association of Cardiometabolic Multimorbidity With Mortality. *JAMA* 2015; **314**: 52-60 [PMID: 26151266 DOI: 10.1001/jama.2015.7008]
- 19 Jepsen P. Comorbidity in cirrhosis. *World J Gastroenterol* 2014; **20**: 7223-7230 [PMID: 24966593 DOI: 10.3748/wjg.v20.i23.7223]
- 20 Chung WS, Lin CL. Comorbid risks of deep vein thrombosis and pulmonary thromboembolism in patients with chronic pancreatitis: a nationwide cohort study. *J Thromb Haemost* 2016; **14**: 98-104 [PMID: 26563680 DOI: 10.1111/jth.13195]
- 21 Qiu H, Tan K, Long F, Wang L, Yu H, Deng R, Long H, Zhang Y, Pan J. The Burden of COPD Morbidity Attributable to the Interaction between Ambient Air Pollution and Temperature in Chengdu, China. *Int J Environ Res Public Health* 2018; **15** [PMID: 29534476 DOI: 10.3390/ijerph15030492]
- 22 Zhu X, Qiu H, Wang L, Duan Z, Yu H, Deng R, Zhang Y, Zhou L. Risks of hospital admissions from a spectrum of causes associated with particulate matter pollution. *Sci Total Environ* 2019; **656**: 90-100 [PMID: 30502738 DOI: 10.1016/j.scitotenv.2018.11.240]
- 23 Qiu H, Zhu X, Wang L, Pan J, Pu X, Zeng X, Zhang L, Peng Z, Zhou L. Attributable risk of hospital admissions for overall and specific mental disorders due to particulate matter pollution: A time-series study in Chengdu, China. *Environ Res* 2019; **170**: 230-237 [PMID: 30594694 DOI: 10.1016/j.envres.2018.12.019]
- 24 Zou WB, Ru N, Wu H, Hu LH, Ren X, Jin G, Wang Z, Du YQ, Cao YN, Zhang L, Chang XY, Zhang RC, Li XB, Shen Y, Li P, Li ZS, Liao Z; Chronic Pancreatitis Group of Chinese Medical Doctor Association. Guidelines for the diagnosis and treatment of chronic pancreatitis in China (2018 edition). *Hepatobiliary Pancreat Dis Int* 2019; **18**: 103-109 [PMID: 30922816 DOI: 10.1016/j.hbpd.2019.02.004]
- 25 Machicado JD, Amann ST, Anderson MA, Abberbock J, Sherman S, Conwell DL, Cote GA, Singh VK, Lewis MD, Alkaade S, Sandhu BS, Guda NM, Muniraj T, Tang G, Baillie J, Brand RE, Gardner TB, Gelrud A, Forsmark CE, Banks PA, Slivka A, Wilcox CM, Whitcomb DC, Yadav D. Quality of Life in Chronic Pancreatitis is Determined by Constant Pain, Disability/Unemployment, Current Smoking, and Associated Co-Morbidities. *Am J Gastroenterol* 2017; **112**: 633-642 [PMID: 28244497 DOI: 10.1038/ajg.2017.42]
- 26 Alkhayyat M, Abou Saleh M, Coronado W, Abureesh M, Al-Otoom O, Qapaja T, Mansoor E, Simons-Linares CR, Stevens T, Chahal P. Increasing Prevalence of Anxiety and Depression Disorders After Diagnosis of Chronic Pancreatitis: A 5-Year Population-Based Study. *Pancreas* 2021; **50**: 153-159 [PMID: 33565791 DOI: 10.1097/MPA.0000000000001746]
- 27 Im PK, Millwood IY, Guo Y, Du H, Chen Y, Bian Z, Tan Y, Guo Z, Wu S, Hua Y, Li L, Yang L, Chen Z; China Kadoorie Biobank (CKB) collaborative group. Patterns and trends of alcohol consumption in rural and urban areas of China: findings from the China Kadoorie Biobank. *BMC Public Health* 2019; **19**: 217 [PMID: 30786877 DOI: 10.1186/s12889-019-6502-1]
- 28 Wang M, Luo X, Xu S, Liu W, Ding F, Zhang X, Wang L, Liu J, Hu J, Wang W. Trends in smoking prevalence and implication for chronic diseases in China: serial national cross-sectional surveys from 2003 to 2013. *Lancet Respir Med* 2019; **7**: 35-45 [PMID: 30482646 DOI: 10.1016/S2213-2600(18)30432-6]
- 29 Pernenkil V, Wyatt T, Akinyemiju T. Trends in smoking and obesity among US adults before, during, and after the great recession and Affordable Care Act roll-out. *Prev Med* 2017; **102**: 86-92 [PMID: 28694062 DOI: 10.1016/j.ypmed.2017.07.001]
- 30 Yadav D, Timmons L, Benson JT, Dierkhising RA, Chari ST. Incidence, prevalence, and survival of chronic pancreatitis: a population-based study. *Am J Gastroenterol* 2011; **106**: 2192-2199 [PMID: 21946280 DOI: 10.1038/ajg.2011.328]
- 31 Löhr JM, Dominguez-Munoz E, Rosendahl J, Besselink M, Mayerle J, Lerch MM, Haas S, Akisik F, Kartalis N, Iglesias-Garcia J, Keller J, Boermeester M, Werner J, Dumonceau JM, Fockens P, Drewes A, Ceyhan G, Lindkvist B, Drenth J, Ewald N, Hardt P, de Madaria E, Witt H, Schneider A, Manfredi R, Brøndum FJ, Rudolf S, Bollen T, Bruno M; HaPanEU/UEG Working Group. United European Gastroenterology evidence-based guidelines for the diagnosis and therapy of chronic pancreatitis (HaPanEU). *United European Gastroenterol J* 2017; **5**: 153-199 [PMID: 28344786 DOI: 10.1177/2050640616684695]
- 32 Madzak A, Olesen SS, Wathle GK, Haldorsen IS, Drewes AM, Frøkjær JB. Secretin-Stimulated Magnetic Resonance Imaging Assessment of the Benign Pancreatic Disorders: Systematic Review and Proposal for a Standardized Protocol. *Pancreas* 2016; **45**: 1092-1103 [PMID: 27171509 DOI: 10.1097/MPA.0000000000000606]
- 33 Rosman DA, Duszak R Jr, Wang W, Hughes DR, Rosenkrantz AB. Changing Utilization of Noninvasive Diagnostic Imaging Over 2 Decades: An Examination Family-Focused Analysis of Medicare Claims Using the Neiman Imaging Types of Service Categorization System. *AJR Am J Roentgenol* 2018; **210**: 364-368 [PMID: 29220208 DOI: 10.2214/AJR.17.18214]
- 34 Xiao AY, Tan ML, Wu LM, Asrani VM, Windsor JA, Yadav D, Petrov MS. Global incidence and mortality of pancreatic diseases: a systematic review, meta-analysis, and meta-regression of population-based cohort studies. *Lancet Gastroenterol Hepatol* 2016; **1**: 45-55 [PMID: 28404111 DOI: 10.1016/S2468-1253(16)30004-8]
- 35 Hirota M, Shimosegawa T, Masamune A, Kikuta K, Kume K, Hamada S, Kihara Y, Satoh A, Kimura K, Tsuji I, Kuriyama S; Research Committee of Intractable Pancreatic Diseases. The sixth nationwide epidemiological survey of chronic pancreatitis in Japan. *Pancreatol* 2012; **12**: 79-84 [PMID: 22487515 DOI: 10.1016/j.pan.2012.02.005]
- 36 Petrov MS, Yadav D. Global epidemiology and holistic prevention of pancreatitis. *Nat Rev Gastroenterol Hepatol* 2019; **16**: 175-184 [PMID: 30482911 DOI: 10.1038/s41575-018-0087-5]
- 37 Whitcomb DC, LaRusch J, Krasinskas AM, Klei L, Smith JP, Brand RE, Neoptolemos JP, Lerch MM, Tector M, Sandhu BS, Guda NM, Orlichenko L; Alzheimer's Disease Genetics Consortium, Alkaade S, Amann ST, Anderson MA, Baillie J, Banks PA, Conwell D, Coté GA, Cotton PB, DiSario J, Farrer LA, Forsmark CE, Johnstone M, Gardner TB, Gelrud A, Greenhalf W, Haines JL, Hartman DJ, Hawes RA,

- Lawrence C, Lewis M, Mayerle J, Mayeux R, Melhem NM, Money ME, Muniraj T, Papachristou GI, Pericak-Vance MA, Romagnuolo J, Schellenberg GD, Sherman S, Simon P, Singh VP, Slivka A, Stolz D, Sutton R, Weiss FU, Wilcox CM, Zarnescu NO, Wisniewski SR, O'Connell MR, Kienholz ML, Roeder K, Barmada MM, Yadav D, Devlin B. Common genetic variants in the CLDN2 and PRSS1-PRSS2 loci alter risk for alcohol-related and sporadic pancreatitis. *Nat Genet* 2012; **44**: 1349-1354 [PMID: [23143602](#) DOI: [10.1038/ng.2466](#)]
- 38 **Ma DM**, Dong XW, Han X, Ling Z, Lu GT, Sun YY, Yin XD. Pancreatitis and Pancreatic Cancer Risk. *Technol Cancer Res Treat* 2023; **22**: 15330338231164875 [PMID: [36972517](#) DOI: [10.1177/15330338231164875](#)]
- 39 **Poddighe D**. Autoimmune pancreatitis and pancreatic cancer: Epidemiological aspects and immunological considerations. *World J Gastroenterol* 2021; **27**: 3825-3836 [PMID: [34321847](#) DOI: [10.3748/wjg.v27.i25.3825](#)]
- 40 **Phillips AE**, Faghih M, Drewes AM, Singh VK, Yadav D, Olesen SS; Pancreatic Quantitative Sensory Testing (P-QST) Consortium. Psychiatric Comorbidity in Patients With Chronic Pancreatitis Associates With Pain and Reduced Quality of Life. *Am J Gastroenterol* 2020; **115**: 2077-2085 [PMID: [32740078](#) DOI: [10.14309/ajg.0000000000000782](#)]
- 41 **Khan D**, Abureesh M, Alkhayyat M, Sadiq W, Alshami M, Munir AB, Karam B, Deeb L, Lafferty J. Prevalence of Myocardial Infarction in Patients With Chronic Pancreatitis. *Pancreas* 2021; **50**: 99-103 [PMID: [33370030](#) DOI: [10.1097/MPA.0000000000001721](#)]
- 42 **Yadav D**, Askew RL, Palermo T, Li L, Andersen DK, Chen M, Fisher WE, Fogel EL, Forsmark CE, Hart PA, Othman MO, Pandol SJ, Park WG, Topazian MD, Van Den Eeden SK, Vege SS, Yang Y, Serrano J, Conwell DL; Consortium for the Study of Chronic Pancreatitis, Diabetes; Pancreatic Cancer (CPDPC). Association of Chronic Pancreatitis Pain Features With Physical, Mental, and Social Health. *Clin Gastroenterol Hepatol* 2023; **21**: 1781-1791.e4 [PMID: [36191836](#) DOI: [10.1016/j.cgh.2022.09.026](#)]
- 43 **Makar M**, Vodusek Z, Xia W, Greenberg P, Abdelsayed GG. Rising Prevalence of Anxiety and Depression in Chronic Pancreatitis: A Nationwide Analysis. *Pancreas* 2022; **51**: 325-329 [PMID: [35695767](#) DOI: [10.1097/MPA.0000000000002019](#)]
- 44 **Chen CH**, Lin CL, Jeng LB. Association between chronic pancreatitis and urolithiasis: A population-based cohort study. *PLoS One* 2018; **13**: e0194019 [PMID: [29522553](#) DOI: [10.1371/journal.pone.0194019](#)]
- 45 **Tseng CW**, Chen YT, Lin CL, Liang JA. Association between chronic pancreatitis and pyogenic liver abscess: a nationwide population study. *Curr Med Res Opin* 2017; **33**: 505-510 [PMID: [27892720](#) DOI: [10.1080/03007995.2016.1266312](#)]
- 46 **Wong TS**, Liao KF, Lin CM, Lin CL, Chen WC, Lai SW. Chronic Pancreatitis Correlates With Increased Risk of Cerebrovascular Disease: A Retrospective Population-Based Cohort Study in Taiwan. *Medicine (Baltimore)* 2016; **95**: e3266 [PMID: [27082563](#) DOI: [10.1097/MD.0000000000003266](#)]
- 47 **Chen YL**, Hsu CW, Cheng CC, Yiang GT, Lin CS, Lin CL, Sung FC, Liang JA. Increased subsequent risk of inflammatory bowel disease association in patients with chronic pancreatitis: a nationwide population-based cohort study. *Curr Med Res Opin* 2017; **33**: 1077-1082 [PMID: [28277863](#) DOI: [10.1080/03007995.2017.1300143](#)]
- 48 **Chen C**, Zhou Y, Wang D, Li G, Yin K, Tao H, Wang CY, Li ZS, Wei C, Hu LH. Anxiety, depression, and coping styles among patients with chronic pancreatitis in East China. *BMC Psychiatry* 2023; **23**: 212 [PMID: [36991480](#) DOI: [10.1186/s12888-023-04691-2](#)]



Published by **Baishideng Publishing Group Inc**
7041 Koll Center Parkway, Suite 160, Pleasanton, CA 94566, USA

Telephone: +1-925-3991568

E-mail: bpgoffice@wjgnet.com

Help Desk: <https://www.f6publishing.com/helpdesk>

<https://www.wjgnet.com>

