

World Journal of *Gastroenterology*

World J Gastroenterol 2017 November 14; 23(42): 7495-7652



**EDITORIAL**

- 7495 Current and emerging pharmacological therapy for non-alcoholic fatty liver disease

Eshraghian A

REVIEW

- 7505 Intestinal epithelium, intraepithelial lymphocytes and the gut microbiota - Key players in the pathogenesis of celiac disease

Cukrowska B, Sowińska A, Bierla JB, Czarnowska E, Rybak A, Grzybowska-Chlebowczyk U

ORIGINAL ARTICLE**Basic Study**

- 7519 Pregnane X receptor and constitutive androstane receptor modulate differently CYP3A-mediated metabolism in early- and late-stage cholestasis

Gabbia D, Dalla Pozza A, Albertoni L, Lazzari R, Zigiotta G, Carrara M, Baldo V, Baldovin T, Floreani A, De Martin S

- 7531 Induction of precocious intestinal maturation in T-cell deficient athymic neonatal rats

Arévalo Sureda E, Gidlund C, Weström B, Prykhodko O

- 7541 Nuclear heat shock protein 110 expression is associated with poor prognosis and hyperthermo-chemotherapy resistance in gastric cancer patients with peritoneal metastasis

Kimura A, Ogata K, Altan B, Yokobori T, Mochiki E, Yanai M, Kogure N, Yanoma T, Suzuki M, Bai T, Kuwano H

- 7551 Combined treatment of pancreatic cancer xenograft with ⁹⁰Y-ITGA6B4-mediated radioimmunotherapy and PI3K/mTOR inhibitor

Aung W, Tsuji AB, Sudo H, Sugyo A, Ukai Y, Kouda K, Kurosawa Y, Furukawa T, Saga T, Higashi T

- 7563 Effects of Hemp seed soft capsule on colonic ion transport in rats

Lu XF, Jia MD, Zhang SS, Zhao LQ

- 7572 Novel D-galactosamine-induced cynomolgus monkey model of acute liver failure

Feng L, Cai L, He GL, Weng J, Li Y, Pan MX, Jiang ZS, Peng Q, Gao Y

- 7584 Diversity of bacterial lactase genes in intestinal contents of mice with antibiotics-induced diarrhea

Long CX, He L, Guo YF, Liu YW, Xiao NQ, Tan ZJ

- 7594 Potential rat model of anxiety-like gastric hypersensitivity induced by sequential stress

Jing FC, Zhang J, Feng C, Nian YY, Wang JH, Hu H, Yang BD, Sun XM, Zheng JY, Yin XR

Retrospective Cohort Study

- 7609 Post-colonoscopy colorectal cancer rate in the era of high-definition colonoscopy

Iwatate M, Kitagawa T, Katayama Y, Tokutomi N, Ban S, Hattori S, Hasuike N, Sano W, Sano Y, Tamano M

- 7618 Right- and left-sided colorectal cancers respond differently to traditional Chinese medicine

Liu SS, Shi Q, Li HJ, Yang W, Han SS, Zong SQ, Li W, Hou FG

Observational Study

- 7626 Hepatitis B virus outreach to immigrant population in Greater Boston Area: Key to improving hepatitis B knowledge

Djoufack R, Cheon SSY, Mohamed A, Faye F, Diouf K, Colvin R, Morrill J, Duffy-Keane AM, Perumalswami P, Jourdain G, Fusco DN

- 7635 Predictors of healthcare-seeking behavior among Chinese patients with irritable bowel syndrome

Fan W, Xu D, Chang M, Zhu L, Fei G, Li X, Fang X

SYSTEMATIC REVIEWS

- 7644 Vaccinations in immunosuppressive-dependent pediatric inflammatory bowel disease

Nguyen HT, Minar P, Jackson K, Fulkerson PC

ABOUT COVER

Editorial board member of *World Journal of Gastroenterology*, Zhao-Shan Niu, MD, Associate Professor, Laboratory of Micromorphology, School of Basic Medicine, Medical Department of Qingdao University, Qingdao 266071, Shandong Province, China

AIMS AND SCOPE

World Journal of Gastroenterology (*World J Gastroenterol*, *WJG*, print ISSN 1007-9327, online ISSN 2219-2840, DOI: 10.3748) is a peer-reviewed open access journal. *WJG* was established on October 1, 1995. It is published weekly on the 7th, 14th, 21st, and 28th each month. The *WJG* Editorial Board consists of 1375 experts in gastroenterology and hepatology from 68 countries.

The primary task of *WJG* is to rapidly publish high-quality original articles, reviews, and commentaries in the fields of gastroenterology, hepatology, gastrointestinal endoscopy, gastrointestinal surgery, hepatobiliary surgery, gastrointestinal oncology, gastrointestinal radiation oncology, gastrointestinal imaging, gastrointestinal interventional therapy, gastrointestinal infectious diseases, gastrointestinal pharmacology, gastrointestinal pathophysiology, gastrointestinal pathology, evidence-based medicine in gastroenterology, pancreatology, gastrointestinal laboratory medicine, gastrointestinal molecular biology, gastrointestinal immunology, gastrointestinal microbiology, gastrointestinal genetics, gastrointestinal translational medicine, gastrointestinal diagnostics, and gastrointestinal therapeutics. *WJG* is dedicated to become an influential and prestigious journal in gastroenterology and hepatology, to promote the development of above disciplines, and to improve the diagnostic and therapeutic skill and expertise of clinicians.

INDEXING/ABSTRACTING

World Journal of Gastroenterology (*WJG*) is now indexed in Current Contents[®]/Clinical Medicine, Science Citation Index Expanded (also known as SciSearch[®]), Journal Citation Reports[®], Index Medicus, MEDLINE, PubMed, PubMed Central and Directory of Open Access Journals. The 2017 edition of Journal Citation Reports[®] cites the 2016 impact factor for *WJG* as 3.365 (5-year impact factor: 3.176), ranking *WJG* as 29th among 79 journals in gastroenterology and hepatology (quartile in category Q2).

FLYLEAF

I-IX Editorial Board

EDITORS FOR THIS ISSUE

Responsible Assistant Editor: Xiang Li
Responsible Electronic Editor: Yan-Jie Ma
Proofing Editor-in-Chief: Lian-Sheng Ma

Responsible Science Editor: Ze-Mao Gong
Proofing Editorial Office Director: Jin-Lei Wang

NAME OF JOURNAL
World Journal of Gastroenterology

ISSN
ISSN 1007-9327 (print)
ISSN 2219-2840 (online)

LAUNCH DATE
October 1, 1995

FREQUENCY
Weekly

EDITORS-IN-CHIEF

Damian Garcia-Olmo, MD, PhD, Doctor, Professor, Surgeon, Department of Surgery, Universidad Autonoma de Madrid; Department of General Surgery, Fundacion Jimenez Diaz University Hospital, Madrid 28040, Spain

Stephen C Strom, PhD, Professor, Department of Laboratory Medicine, Division of Pathology, Karolinska Institutet, Stockholm 141-86, Sweden

Andrzej S Tarnawski, MD, PhD, DSc (Med), Professor of Medicine, Chief Gastroenterology, VA Long Beach Health Care System, University of California, Irvine, CA, 5901 E. Seventh Str., Long Beach,

CA 90822, United States

EDITORIAL BOARD MEMBERS

All editorial board members resources online at <http://www.wjgnet.com/1007-9327/editorialboard.htm>

EDITORIAL OFFICE

Jin-Lei Wang, Director
Yuan Qi, Vice Director
Ze-Mao Gong, Vice Director
World Journal of Gastroenterology
Baishideng Publishing Group Inc
7901 Stoneridge Drive, Suite 501,
Pleasanton, CA 94588, USA
Telephone: +1-925-2238242
Fax: +1-925-2238243
E-mail: editorialoffice@wjgnet.com
Help Desk: <http://www.f6publishing.com/helpdesk>
<http://www.wjgnet.com>

PUBLISHER

Baishideng Publishing Group Inc
7901 Stoneridge Drive, Suite 501,
Pleasanton, CA 94588, USA
Telephone: +1-925-2238242
Fax: +1-925-2238243
E-mail: bpoffice@wjgnet.com
Help Desk: <http://www.f6publishing.com/helpdesk>

<http://www.wjgnet.com>

PUBLICATION DATE
November 14, 2017

COPYRIGHT

© 2017 Baishideng Publishing Group Inc. Articles published by this Open-Access journal are distributed under the terms of the Creative Commons Attribution Non-commercial License, which permits use, distribution, and reproduction in any medium, provided the original work is properly cited, the use is non commercial and is otherwise in compliance with the license.

SPECIAL STATEMENT

All articles published in journals owned by the Baishideng Publishing Group (BPG) represent the views and opinions of their authors, and not the views, opinions or policies of the BPG, except where otherwise explicitly indicated.

INSTRUCTIONS TO AUTHORS

Full instructions are available online at <http://www.wjgnet.com/bpg/gerinfo/204>

ONLINE SUBMISSION
<http://www.f6publishing.com>

Retrospective Cohort Study

Post-colonoscopy colorectal cancer rate in the era of high-definition colonoscopy

Mineo Iwatate, Tomoyuki Kitagawa, Yasumi Katayama, Naohiko Tokutomi, Shinichi Ban, Santa Hattori, Noriaki Hasuike, Wataru Sano, Yasushi Sano, Masaya Tamano

Mineo Iwatate, Santa Hattori, Noriaki Hasuike, Wataru Sano, Yasushi Sano, Gastrointestinal Center and Institute of Minimally-Invasive Endoscopic Care, Sano Hospital, Kobe, Hyogo 655-0031, Japan

Mineo Iwatate, Tomoyuki Kitagawa, Yasumi Katayama, Naohiko Tokutomi, Masaya Tamano, Department of Gastroenterology, Dokkyo Medical University Koshigaya Hospital, Koshigaya, Saitama 343-8555, Japan

Shinichi Ban, Department of Pathology, Dokkyo Medical University Koshigaya Hospital, Koshigaya, Saitama 343-8555, Japan

ORCID number: Mineo Iwatate (0000-0003-3782-3687); Tomoyuki Kitagawa (0000-0002-3168-9117); Yasumi Katayama (0000-0003-2203-9443); Naohiko Tokutomi (0000-0002-0366-2697); Shinichi Ban (0000-0003-3342-251X); Santa Hattori (0000-0002-5926-3417); Noriaki Hasuike (0000-0001-6215-6973); Wataru Sano (0000-0002-1401-5591); Yasushi Sano (0000-0002-3352-5757); Masaya Tamano (0000-0001-5595-2330).

Author contributions: Iwatate M, Katayama Y, Sano Y and Tamano M contributed to study concept and design; Iwatate M, Kitagawa T, Katayama Y, Tokutomi N, Ban S, Hattori S, Hasuike N, Sano W and Sano Y contributed to acquisition and analysis of data; Iwatate M drafted the manuscript; Katayama Y, Ban S, Sano Y and Tamano M critically revised the manuscript for intellectual content.

Institutional review board statement: The study was reviewed and approved by the Institutional Review Board at Sano Hospital and Dokkyo Medical University Koshigaya Hospital.

Informed consent statement: Patients were not required to give informed consent to the study because the analysis used anonymous data that were obtained after each patient agreed to colonoscopy or surgery by written consent.

Conflict-of-interest statement: The authors have no conflicts of interest to declare in relation to this study.

Data sharing statement: No additional data are available.

Open-Access: This article is an open-access article which was selected by an in-house editor and fully peer-reviewed by external reviewers. It is distributed in accordance with the Creative Commons Attribution Non Commercial (CC BY-NC 4.0) license, which permits others to distribute, remix, adapt, build upon this work non-commercially, and license their derivative works on different terms, provided the original work is properly cited and the use is non-commercial. See: <http://creativecommons.org/licenses/by-nc/4.0/>

Manuscript source: Invited manuscript

Correspondence to: Mineo Iwatate, MD, Gastrointestinal Center and Institute of Minimally-Invasive Endoscopic Care, Sano Hospital, 2-5-1 Shimizugaoka, Tarumi-ku, Kobe, Hyogo 655-0031, Japan. m.iwatate15@gmail.com
Telephone: +81-78-7851000
Fax: +81-78-7850077

Received: August 30, 2017
Peer-review started: August 31, 2017
First decision: September 20, 2017
Revised: October 2, 2017
Accepted: October 26, 2017
Article in press: October 26, 2017
Published online: November 14, 2017

Abstract

AIM

To investigate the post-colonoscopy colorectal cancer (PCCRC) rate for high-definition (HD) colonoscopy compared with that for standard-definition colonoscopy reported previously.

METHODS

Using medical records at Sano Hospital (SH) and Dokkyo Medical University Koshigaya Hospital (DMUKH), we retrospectively obtained data on consecutive patients diagnosed as having CRC between January 2010 and

December 2015. The definition of PCCRC was diagnosis of CRC between 7 and 36 mo after initial high-definition colonoscopy that had detected no cancer, and patients were divided into a PCCRC group and a non-PCCRC group. The primary outcome was the rate of PCCRC for HD colonoscopy. The secondary outcomes were factors associated with PCCRC and possible reason for occurrence of early and advanced PCCRC.

RESULTS

Among 892 CRC patients, 11 were diagnosed as having PCCRC and 881 had non-PCCRC. The PCCRC rate was 1.7% (8/471) at SH and 0.7% (3/421) at DMUKH. In comparison with the non-PCCRC group, the PCCRC group had a significantly higher preponderance of smaller tumors (39 mm *vs* 19 mm, $P = 0.002$), a shallower invasion depth (T1 rate, 25.4% *vs* 63.6%, $P = 0.01$), a non-polypoid macroscopic appearance (39.0% *vs* 85.7%, $P = 0.02$) and an earlier stage (59.7% *vs* 90.9%, $P = 0.03$). Possible reasons for PCCRC were "missed or new" in 9 patients (82%), "incomplete resection" in 1 (9%), and "inadequate examination" in 1 (9%). Among 9 "missed or new" PCCRC, the leading cause was non-polypoid shape for early PCCRC and blinded location for advanced PCCRC.

CONCLUSION

The PCCRC rate for HD colonoscopy was 0.7%-1.7%, being lower than that for standard-definition colonoscopy (1.8%-9.0%) reported previously employing the same methodology.

Key words: Post-colonoscopy colorectal cancer; High-definition; Post-colonoscopy colorectal cancer rate; Associated factor; Possible explanation

© The Author(s) 2017. Published by Baishideng Publishing Group Inc. All rights reserved.

Core tip: Technological advance from standard-definition to high-definition colonoscopy has the potential to reduce the incidence of post-colonoscopy colorectal cancer (PCCRC). We demonstrated the lower PCCRC rate for high-definition colonoscopy compared for standard-definition colonoscopy reported previously (0.7%-1.7% *vs* 1.8%-9.0%). Our data might help to set a benchmark for the quality of colonoscopy in Asian countries, where data on PCCRC are scarce. We firstly analyzed the possible reasons for both early and advanced "missed or new" PCCRC cases and found differences between the two groups. The leading cause was non-polypoid shape for early PCCRC and blinded location for advanced PCCRC.

Iwatate M, Kitagawa T, Katayama Y, Tokutomi N, Ban S, Hattori S, Hasuike N, Sano W, Sano Y, Tamano M. Post-colonoscopy colorectal cancer rate in the era of high-definition colonoscopy. *World J Gastroenterol* 2017; 23(42): 7609-7617 Available from: URL: <http://www.wjgnet.com/1007-9327/full/v23/i42/7609.htm> DOI: <http://dx.doi.org/10.3748/wjg.v23.i42.7609>

INTRODUCTION

Colorectal cancer (CRC) is the second most commonly diagnosed cancer in females and the third most common in males worldwide^[1]. Colonoscopy can reduce the likelihood of CRC-related death by resecting precursor lesions and detecting CRC at an early stage^[2-4]. Unfortunately, the quality of colonoscopy is insufficient to prevent all interval CRCs, and some patients still develop CRC before the next recommended surveillance date, an event known as post-colonoscopy CRC (PCCRC).

A better understanding of the factors associated with PCCRC may help to reduce its incidence. Previous reports have suggested that in comparison with non-PCCRC, PCCRC is associated with various clinical factors (e.g. older age, female gender, location in the proximal colon, and presence of diverticula) and also endoscopist-related factors (those with less experience at adenoma detection, or non-specialists in gastroenterology)^[5-14]. Around 70% of PCCRCs appear to result from lesions that have been missed or incompletely resected at initial colonoscopy, and could theoretically have been avoidable^[12]. Therefore, the PCCRC rate has been proposed as a key indicator of the quality of colonoscopy, and a meta-analysis has shown that this varies from 1.8% to 9.0%^[13].

High-definition (HD) colonoscopy yields markedly clearer images and has the clinical benefit of increasing the adenoma detection rate in comparison with standard-definition (SD) colonoscopy^[15]. Theoretically, HD colonoscopy has the potential to reduce the incidence of PCCRC, but clinical data related to this issue are still insufficient.

We therefore conducted a retrospective observational study at two academic centers to investigate the PCCRC rate for HD colonoscopy in Japan.

MATERIALS AND METHODS

Patients

By reference to the medical records at Sano Hospital (SH) and Dokkyo Medical University Koshigaya Hospital (DMUKH), we included in this study consecutive individuals diagnosed as having CRC between January 2010 and December 2015. Exclusion criteria were as follows: (1) patients with IBD or hereditary disease; (2) those with a previous diagnosis of CRC; (3) those for which data related to CRC (tumor size, shape, site, and histopathology) were insufficient; (4) those with a CRC histopathology other than adenocarcinoma; and (5) those that did not comply with the Japanese clinical guidelines for the management of colorectal polyps at initial colonoscopy^[16]. Patients who met the eligibility criteria were divided into a PCCRC group and a non-PCCRC group according to the definition of PCCRC given below. HD colonoscopy with a LUCERA-SPECTRUM or ELITE video processor and HD monitors (Olympus, Japan) had been used for all patients since 2006 at both hospitals. The study protocol was approved by the

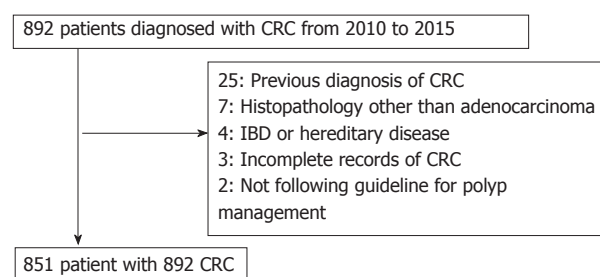


Figure 1 Patient flow chart. CRC: Colorectal cancer.

institutional review boards of both hospitals.

Definition of PCCRC

Based on a previous research method, we defined PCCRC as CRC that had been diagnosed 7 to 36 mo after initial HD colonoscopy, when no cancer had been detected^[13]. CRC diagnosed within 6 mo of HD colonoscopy yielding negative findings was considered to have been a cancer confirmed after follow-up of a suspicious lesion, and was classified as non-PCCRC. CRC was defined as tumors that have penetrated through the muscularis mucosae into submucosa according to the classification of the World Health Organization.

Outcome assessment

Primary outcome: The primary outcome of interest was the PCCRC rate for HD colonoscopy, calculated as the number of PCCRC events divided by the total number of CRCs examined during the study period.

Secondary outcome: (1) Factors associated with PCCRC: We collected data on patients (age, sex) and tumors (size, location, shape, depth of invasion, UICC stage) for comparison between the PCCRC and non-PCCRC groups; and (2) possible reason for occurrence of early and advanced PCCRC: We assigned each PCCRC case into one of three categories: "incomplete resection" defined as CRC detected on the scar where an advanced polyp had been incompletely resected at the time of colonoscopy, "inadequate examination" defined as failure to intubate the colon to the cecum or poor bowel preparation, and "missed or new" as "others". Differentiation of "missed" CRC from "new" CRC is challenging. In fact, most CRCs categorized as "missed or new" were thought to have been "missed", in view of the fact that le Clercq had defined "new" CRC as CRC detected > 36 mo after the index colonoscopy^[14]. Therefore, we additionally classified the "missed or new" category into four subcategories to determine which factor was most closely associated with "missed" CRC (multiple choice): (1) tumor morphology: Polypoid or non-polypoid; (2) tumor size: Small (< 10 mm) or not; (3) tumor location: In a blind area (e.g., behind a fold or close to the ileocecal valve/junction) or not; and (4) the endoscopist's observational skill: Multiple ($n \geq 3$) polyps evident at initial colonoscopy or not. We assumed that if an endoscopist took a long time to examine a patient

with multiple polyps, this would prove exhausting and lead to loss of concentration in detecting polyps. We divided 'missed or new' PCCRC into early PCCRC (T1 stage) and advanced PCCRC (T2-4 stage) to clarify how the factors associated with PCCRC differed between the two groups.

Statistical analysis

Categorical variables were compared using the χ^2 test or Mid-P exact test, normally distributed continuous variables were compared using *t*-test, and non-normally distributed continuous variables were compared using the Wilcoxon rank sum test. A two-sided *P* value of < 0.05 was considered statistically significant.

RESULTS

A total of 892 patients with CRC were identified from the records of both hospitals during the period January 2010 to December 2015. On the basis of the exclusion criteria, 41 patients were discarded and 851 patients (444 at SH, and 407 at DMUKH) with 892 CRCs were analyzed retrospectively (Figure 1). All of the CRCs were detected by gastroenterologists with more than 3 years of colonoscopy experience.

PCCRC rate

Among the 892 CRCs (471 at SH, and 421 at DMUKH), 2 (1 at each at SH and DMUKH) were diagnosed within 6 mo after initial colonoscopy and 11 (8 in SH, and 3 in DMUKH) between 7 and 36 mo after initial colonoscopy. The PCCRC rate was 1.7% (8/471) at SH, 0.7% (3/421) at DMUKH, and 1.2 % (11/892) for both hospitals.

Baseline variables in the PCCRC and non-PCCRC groups

Baseline variables in the PCCRC and non-PCCRC groups are listed in Table 1. Among patient-related variables, gender and mean age showed no significant inter-group difference. Among tumor-related variables, there were significant differences in size, depth, morphology and UICC stage between the two groups. In comparison with non-PCCRC patients, those with PCCRC were more likely to have small tumors (mean size, 39 mm vs 19 mm respectively, $P = 0.002$), a shallow tumor depth (T1 rate, 25.4% vs 63.6%, $P = 0.01$), early CRCs with a non-polypoid macroscopic appearance (39.0% vs 85.7%, $P = 0.02$), and an early UICC stage (stage I or II, 59.7% vs 90.9%, $P = 0.03$).

Possible reasons for PCCRC

Details of the 11 patients with PCCRC are shown in Table 2. The possible reasons for PCCRC were "missed or new" in 9 cases (82%), "incomplete resection" in 1 (9%), and "inadequate examination" in 1 (9%). Possible explanations for the 9 "missed or new" cases (6 early and 3 advanced PCCRC) are summarized in Figure 2. The 6 early 'missed or new' PCCRC cases could have

Table 1 Baseline variables in the post-colonoscopy colorectal cancer and non- post-colonoscopy colorectal cancer group *n* (%)

	PCCRC	Non-PCCRC	<i>P</i> value
Patients	11	840	
Gender			NS
Male	6 (54.5)	485 (57.7)	
Female	5 (45.5)	355 (42.3)	
Age (yr)			NS
mean ± SD	70 ± 10	68 ± 11	
Range	53-82	29-92	
Tumors Size (mm)			0.002
Mean ± SD	19 ± 13	39 ± 20	
Range	4-50	4-110	
Location			NS
Proximal	6 (54.5)	283 (32.1)	
Distal	5 (45.5)	598 (67.9)	
Depth			0.010
T1	7 (63.6)	224 (25.4)	
T2-4	4 (36.4)	657 (74.6)	
Shape ¹			0.020
Polypoid	1 (14.3)	136 (61.0)	
Non-polypoid	6 (85.7)	87 (39.0)	
UICC stage			0.033
Stage I, II	10 (90.9)	526 (59.7)	
Stage III, IV	1 (9.1)	355 (40.3)	

¹Shape of early CRC (T1 stage). PCCRC: Post-colonoscopy colorectal cancer; NS: Not significant; SD: Standard deviation; UICC: Union for International Cancer Control.

been due to a non-polypoid shape in 5 (83%), presence of synchronous multiple polyps at initial colonoscopy in 4 (67%), a small tumor size (< 10 mm) in 2 (33%), and location at a blind spot in 1 (17%). The 3 advanced 'missed or new' PCCRC cases were likely due to their location at a blind spot (100%). Some representative PCCRC cases are presented in detail in Figures 3-7.

DISCUSSION

In this study, we investigated the PCCRC rate in cases examined by HD colonoscopy. It was anticipated that our data might help to set a benchmark for the quality of colonoscopy in Asian countries, where data on PCCRC are scarce. We analyzed the possible reasons for both early and advanced "missed or new" PCCRC cases and found differences between the two groups.

The PCCRC rate in the present study was 0.7%-1.7%, and lower than that in previous reports from Western countries (1.8%-9.0%) calculated using the same methodology^[6-9,13]. There are several possible reasons for this difference. First, as we performed HD colonoscopy in all cases, we might have detected a larger number of pre-malignant polyps or CRC at the time of initial examination. Second, all colonoscopies were performed by experienced gastroenterologists. A population-based study in Manitoba reported that colonoscopy performed by general physicians was associated with a 60% higher risk of missed CRC in comparison with that performed by specialist gastroenterologists^[7]. Third, racial differences in the incidence of CRC between Asian and Western countries. Fourth, the rate of recurrence (9.1%

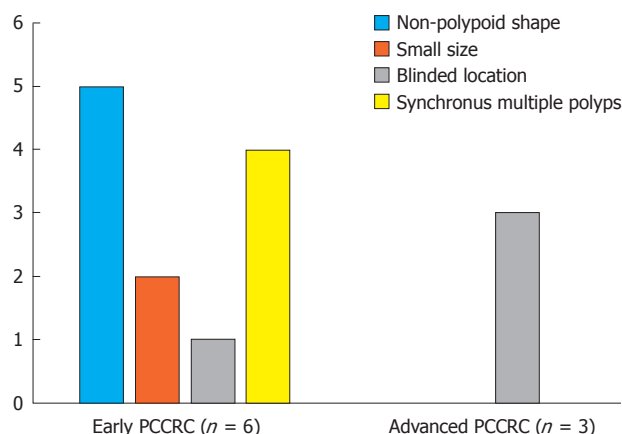


Figure 2 Possible explanations for the 9 "missed or new" post-colonoscopy colorectal cancers. The bar chart shows the number of each possible explanation for the 6 early "missed or new" PCCRCs (left) and the 3 advanced "missed or new" PCCRCs (right). Among the 6 early "missed or new" PCCRCs, possible explanations were a non-polypoid shape in 5 cases (83%), presence of synchronous multiple ($n \geq 3$) polyps at initial colonoscopy in 4 (67%), a small size (< 10 mm) in 2 (33%), and a blind location in 1 (17%). For all 3 (100%) of the advanced "missed or new" PCCRCs, a blind location was considered to have been likely. PCCRC: Post-colonoscopy colorectal cancer.

for all incompletely resected lesions including sessile serrated polyps, 0% for adenomas) in this study was low in comparison with previous studies (8.8%-36.8% for adenoma) performed in Western countries^[12,14,17]. The difference in the recurrence rate for large colorectal tumors between Asian and Western countries is thought to be attributable to the treatment strategy employed, *i.e.*, whether or not endoscopic submucosal dissection (ESD) is available. The ESD technique, originally developed in Japan for large colorectal (≥ 20 mm) tumors, has resulted in higher rates of en bloc resection and lower rates of local recurrence in comparison with conventional endoscopic mucosal resection (EMR) that is generally performed worldwide^[18,19]. The ESD technique has not been popular in Western countries because of its technical difficulty, but it is now becoming increasingly available and employed successfully as practitioners gain experience^[20,21]. The criteria employed to define PCCRC significantly affects the PCCRC rate^[22]. Therefore, we followed the definition of PCCRC adopted in the majority of population-based studies and a recent meta-analysis^[6-9,13].

In this study, we were able to identify several tumor-related factors associated with PCCRC. Such cases were significantly associated with a smaller tumor size, a shallower tumor depth, a non-polypoid shape and an earlier UICC stage, which were features characteristic of missed lesions. Our data support previous studies that have investigated tumor-related risk factors for PCCRC, except for tumor location. Although it has been suggested previously that PCCRC is more likely to arise in the proximal colon rather than the distal colon, we did not find any significant difference in the incidence of PCCRC between these two colon regions. This difference in results may have been attributable to the proportion of incomplete examinations, which can potentially lead

Table 2 Data for the 11 patients with post-colonoscopy colorectal cancer

No	Sex	Age(yr)	Interval (mo)	Tumor shape	Size (mm)	Depth	Location	Initial CS	Possible reason
1	M	79	7	II c	5	T1a	T	Multiple polyps	Missed/new
2	M	76	14	II a (LST-NG)	15	T1a	S	Multiple polyps	Missed/new
3	M	82	17	II a (LST-NG)	25	T1a	T	No polyps	Missed/new
4	F	65	22	II a (LST-NG)	20	T1a	A	Multiple polyps	Missed/new
5	M	59	26	I s	12	T1a	R	Two polyps	Missed/new
6	F	73	11	II a	10	T1b	T	Piecemeal EMR	Incomplete resection
7	M	79	15	I s + II c	4	T1b	S	Multiple polyps	Missed/new
8	F	70	9	Type 2	30	T3	C	No polyps	Inadequate examination
9	F	53	12	Type 2	17	T3	S (SDJ)	No polyps	Missed/new
10	F	77	12	Type 2	50	T3	RS	One polyp	Missed/new
11	M	66	10	Type 2	20	T4	C	Two polyps	Missed/new

Multiple, $n \geq 3$. PCCRC: Post-colonoscopy CRC; CS: Colonoscopy; LST-NG: Laterally spreading tumor non-granular type; SDJ: Sigmoid-descending junction; EMR: Endoscopic mucosal resection.

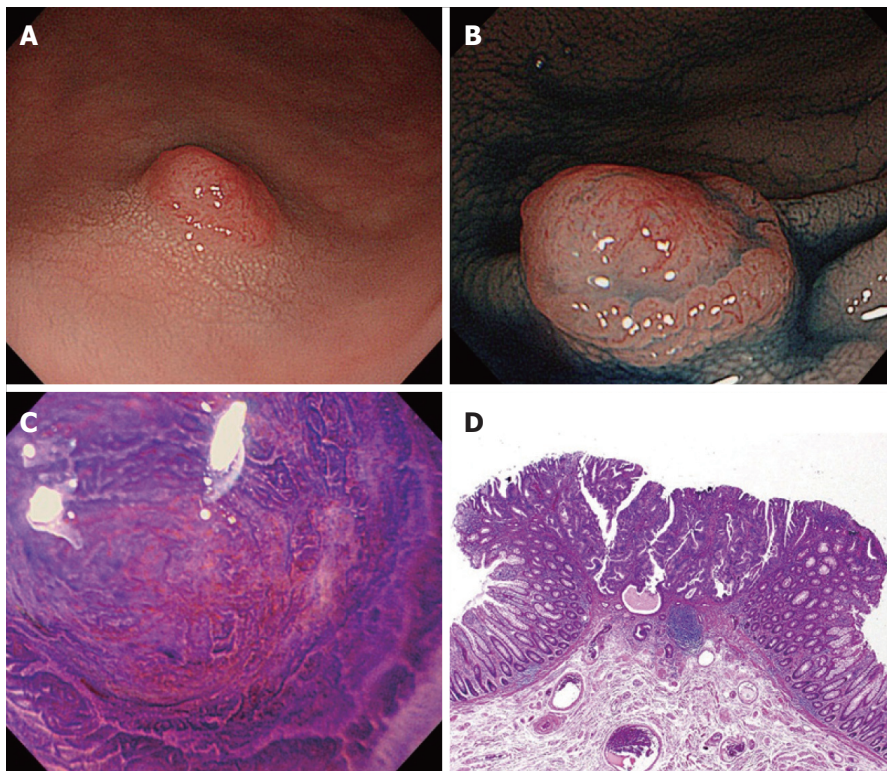


Figure 3 An early “missed or new” post-colonoscopy colorectal cancer case (No. 7 in Table 2). A 79-year-old man underwent initial colonoscopy, and seven small adenomatous polyps in the ascending and sigmoid colon were resected. A: A diminutive lesion 4 mm in size was found in the sigmoid colon during surveillance colonoscopy 15 mo after initial colonoscopy; B: Chromoendoscopy with indigo-carmin dye visualizes the margin of the deep depressed area on the surface of the lesion, and crystal violet stain shows a type-Vi pit with an invasive pattern suggesting submucosal deep invasive cancer (C); D: Histopathological examination of the surgical specimen reveals well to moderately differentiated adenocarcinoma with submucosal deep (3000 µm) invasion and no lymph node metastasis.

to an increase in the rate of proximal colon PCCRC. The rate of complete examination in this study was 99%, as compared with 87%–92% for population-based studies in the United States^[11,23]. Although there was a tendency for the PCCRC group to include older patients and a higher proportion of women than the non-PCCRC group, consistent with other reports, the differences between the two groups were not significant^[6–11,13]. Other possible explanations may have been an insufficient sample size or the racial composition of the population.

Of the three possible reasons for PCCRC, the majority

(82%) of such cases were categorized as ‘missed or new’, consistent with previous reports^[12,14]. We classified ‘missed or new’ PCCRC into early and advanced cases. The major possible explanations for early ‘missed or new’ PCCRC were a non-polypoid shape (83%) and the presence of synchronous multiple polyps at initial colonoscopy (67%). Among non-polypoid lesions, the mean size of depressed lesions was 4.5 mm and that of flat lesions including LST-NG (laterally spreading tumor, non-granular type) was 17.5 mm (Figures 3 and 4). As non-polypoid lesions are less conspicuous than polypoid lesions, they

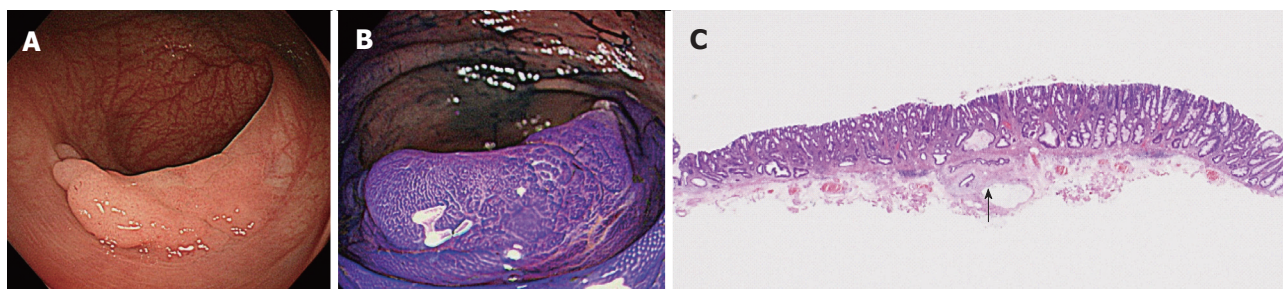


Figure 4 An early “missed or new” post-colonoscopy colorectal cancer case (No. 3 in Table 2). An 82-year-old man underwent initial colonoscopy and was found to have no adenomatous polyps. A: Subsequent colonoscopy 17 mo later revealed a large flat lesion, a laterally spreading non-granular-type tumor (LST-NG), measuring 25 mm in the transverse colon; B: Chromoendoscopy with crystal violet shows a type-Vi pit with a non-invasive pattern suggesting high-grade adenoma or submucosal shallow invasive cancer; C: Histopathological examination of the ESD specimen reveals well differentiated adenocarcinoma with submucosal shallow (200 μ m) invasion (arrow) and no lymphovascular involvement. ESD: Endoscopic submucosal dissection.

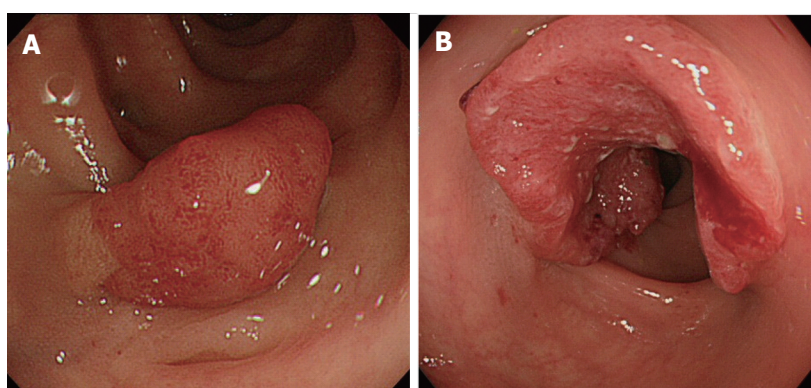


Figure 5 An advanced “missed or new” post-colonoscopy colorectal cancer case (No. 10 in Table 2). A: A 77-year-old woman underwent initial colonoscopy and a pedunculated adenomatous polyp 9 mm in size was resected; B: A large advanced cancer 50 mm in size was found in the recto-sigmoid colon at subsequent colonoscopy for hematochezia 12 mo later. Histopathological examination of the surgical specimen showed well to moderately differentiated adenocarcinoma invading the subserosa, and no lymph node metastasis.

are often missed even if they are large. Endoscopists should pay closer attention to subtle changes in the mucosa, including red areas, loss of vessel visibility, and deformation of the colonic folds, in order to detect flat or depressed lesions^[24-26]. We found that the presence of synchronous multiple polyps at initial colonoscopy was a factor associated with around 70% of early “missed or new” PCCRC cases, and was unrelated to advanced cases. We speculated that a long time spent examining a patient with multiple polyps might lead to a decrease in the concentration of the endoscopist, thus increasing the likelihood that small early CRCs (mean size: 13.5 mm), but not large advanced ones (mean size: 39.0 mm), would be overlooked. On the other hand, one possible explanation for advanced “missed or new” PCCRC cases was thought to be the location of lesions at blind spots, such as the junctions of the recto-sigmoid and sigmoid-descending colon and the ileocecal valve (Figure 5). Endoscopists should be aware that even large advanced CRCs can be easily overlooked during colonoscopy. The development of accessory devices and new modalities is expected to improve observation in “blind” areas of the colon^[27-29]. One technique for improving the visual field in blind areas where the colon is sharply angled might be to actively push the colonoscope in order

to straighten the colon. Among the possible reasons for PCCRC, “incomplete resection” and “inadequate examination” were considered. We experienced a case of PCCRC after piecemeal EMR for a 20-mm sessile serrated adenoma/polyp (SSA/P) in the transverse colon (Figure 6). Although histopathological examination revealed high-grade dysplasia with a negative margin and no lymphovascular involvement, the lesion recurred as a submucosal deeply invasive cancer at 11 mo after the treatment. We speculate that histopathological assessment of the tumor margin for this type of divided specimen may not have been accurate, and that some high-grade dysplasia may have remained *in situ* after initial colonoscopy. Unclear margin of SSA/P may result in incomplete resection. Pohl *et al.*^[30] reported incomplete resection rate for SSAP was higher than for conventional adenoma (31.0% vs 7.2%). Moreover, Zhu *et al.*^[31] found that for colorectal serrated polyps, a large size (≥ 10 mm) and histologic subtype (SSA/P and conventional serrated adenoma) were significantly associated with synchronous CRC. SSA/P should be resected *en bloc* especially when it exceeds 10 mm in size. Finally, one advanced PCCRC case that arose in the cecum after 9 mo was probably attributable to poor preparation at initial colonoscopy (Figure 7). This case serves to

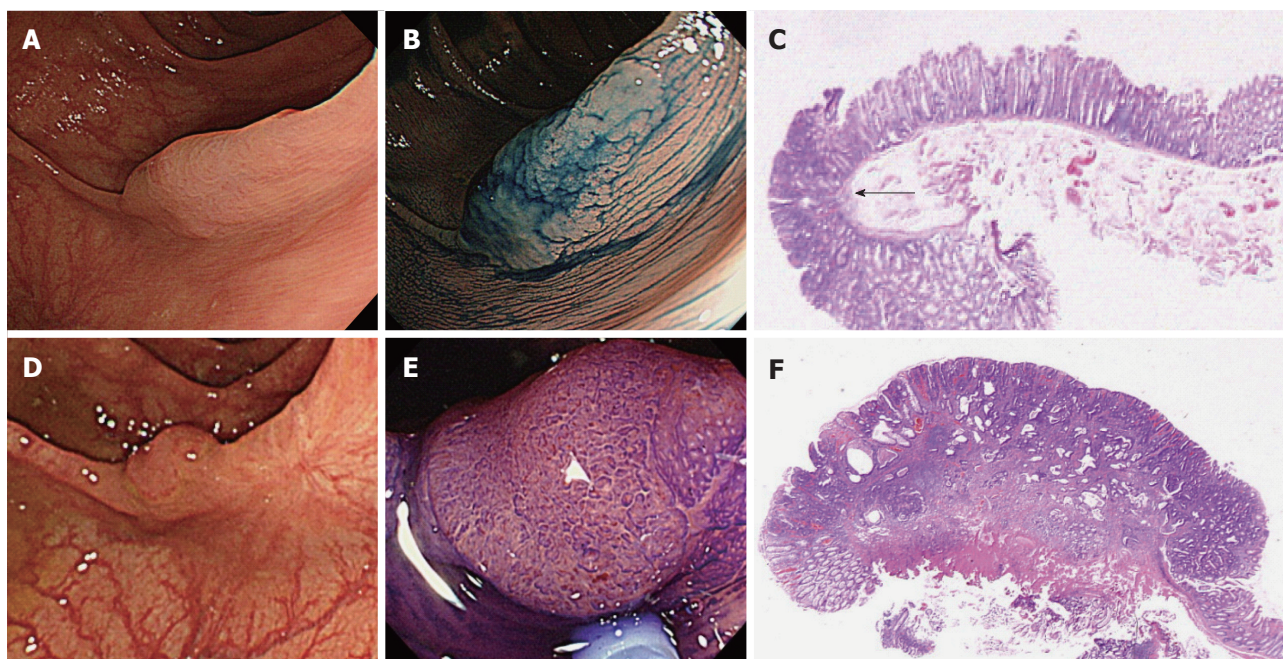


Figure 6 An early post-colonoscopy colorectal cancer case resulting from incomplete resection (No. 6 in Table 2). A 73-year-old woman underwent initial colonoscopy. A large flat lesion 20 mm in size showing type-II and open type-II pits, suggestive of SSA/P, was found by chromoendoscopy in the transverse colon and resected by piecemeal EMR with no macroscopically evident residual lesion (A and B); C: Histopathology of the resected specimen divided into 3 pieces revealed high-grade dysplasia (arrow) in SSA/P with intact vertical and horizontal margins of the dysplasia; D: Surveillance colonoscopy 11 months after initial colonoscopy detected a flat 10-mm lesion on the scar of the initial EMR in the transverse colon; E: Chromoendoscopy with crystal violet revealed unusual type-Vi pits suggesting submucosal invasive cancer; F: Histopathological examination of the EMR specimen revealed moderately differentiated adenocarcinoma invading the deep (2500 μ m) submucosa with lymphovascular involvement. Finally, surgery was performed and histopathological examination revealed no residual cancer at the EMR site in the transverse colon and no lymph node metastasis. EMR: Endoscopic mucosal resection; SSA/P: Sessile serrated adenoma/polyp.

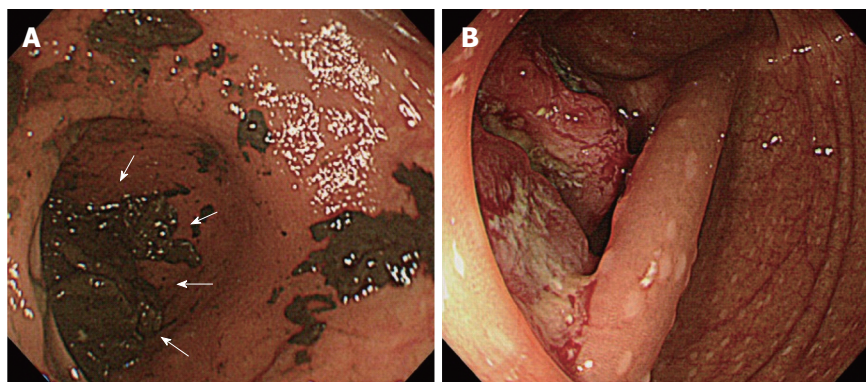


Figure 7 An advanced post-colonoscopy colorectal cancer case resulting from inadequate examination (No. 8 in Table 2). A 70-year-old woman underwent emergency colonoscopy with poor bowel preparation. A: No polyp was found in the colon but a quantity of residual stools covered the lower end of the cecum (arrow); B: Subsequent colonoscopy for hematochezia 9 mo after initial colonoscopy detected a large advanced cancer 30 mm in size at the cecum bottom. Histopathological examination of the surgically resected specimen revealed well differentiated adenocarcinoma invading the subserosa and no lymph node metastasis.

illustrate that residual stools at colonoscopy can hide not only small polyps but also large advanced CRCs. Early repeat colonoscopy is therefore recommended for patients who have undergone colonoscopy after low-quality bowel preparation^[32].

Our study had several limitations. First, the total number of PCCRC cases at the two hospitals was small ($n = 11$) during short study period from 2010 to 2015, and insufficient for investigating the factors associated with PCCRC using a multivariate logistic regression model. This is because HD colonoscopy has been available since

2006 at the both hospitals and patients with PCCRC diagnosed within 36 mo after initial HD colonoscopy began to be recruited in 2010. A further study including a larger number of PCCRC cases in an Asian setting will be necessary. Second, we did not have any information about the indications for colonoscopy, use of prophylactic medicines (e.g., aspirin) and family history of CRC, which could potentially affect the incidence of PCCRC. Third, the data on the PCCRC rate with SD colonoscopy in our hospitals were not available before HD colonoscopy was introduced. It would be better to compare the PCCRC rate

using HD colonoscopy with that using SD colonoscopy in the same hospitals. Finally, as all of the examinations were performed by experienced gastroenterologists, our data cannot be generalized to non-gastroenterologists or inexperienced colonoscopists.

In conclusion, we have shown that the PCCRC rate with HD colonoscopy in our present series was 0.7%-1.7%, being lower than that for SD colonoscopy in previous studies using the same methodology. Further advances in technology may help to reduce the PCCRC rate in the future.

ARTICLE HIGHLIGHTS

Research background

Post-colonoscopy colorectal cancers (PCCRC) has been recognized as a key quality indicator for colonoscopy. The data of PCCRC has been reported from Western countries, however that from Asian countries is lacking. Theoretically, HD colonoscopy has the potential to reduce the incidence of PCCRC, but clinical data related to this issue are still insufficient.

Research motivation

The PCCRC rate at two academic centers might help to set a benchmark for the quality of colonoscopy in Asian countries, where data on PCCRC are scarce.

Research objectives

To investigate the PCCRC rate for HD colonoscopy compared with that for standard-definition colonoscopy reported previously.

Research methods

We retrospectively examined the medical records of consecutive adult patients with CRC between 2010 and 2015 at Sano Hospital (SH) and Dokkyo Medical University Koshigaya Hospital (DMUKH) in Japan. Patients with CRC diagnosed within 6 to 36 mo of HD colonoscopy were classified as a PCCRC group, and the others as a non-PCCRC group. The primary outcome was the PCCRC rate with HD colonoscopy. The secondary outcomes were factors associated with PCCRC and possible reason for occurrence of early and advanced PCCRC.

Research results

We analyzed 851 patients with 892 CRCs including 11 of PCCRC and 881 of non-PCCRC. The PCCRC rate was 1.7% (8/471) at SH and 0.7% (3/421) at DMUKH. Factors significantly associated with PCCRC were smaller size, a shallower invasion depth, a non-polypoid macroscopic appearance, and an earlier stage. The leading possible reason was non-polypoid shape for early PCCRC and blinded location for advanced PCCRC.

Research conclusions

We demonstrated the lower PCCRC rate for high-definition colonoscopy compared for standard-definition colonoscopy reported previously (0.7%-1.7% vs 1.8%-9.0%). Technological advance from standard-definition to high-definition colonoscopy has the potential to reduce the incidence of PCCRC.

Research perspectives

Early PCCRC may be missed by inconspicuous macroscopic type, and advanced PCCRC by the position in blinded location. Endoscopists should be aware that even large advanced CRC can be easily missed during colonoscopy. We should learn the reason why we missed CRC during colonoscopy and prevent the PCCRC in the future. The development of accessory devices and new modalities are expected to improve observation in "blind" areas of the colon and decrease the PCCRC.

Teramoto, and Daizen Hirata for their help in obtaining and analyzing data of this study.

REFERENCES

- 1 Jemal A, Bray F, Center MM, Ferlay J, Ward E, Forman D. Global cancer statistics. *CA Cancer J Clin* 2011; **61**: 69-90 [PMID: 21296855 DOI: 10.3322/caac.20107]
- 2 Winawer SJ, Zauber AG, Ho MN, O'Brien MJ, Gottlieb LS, Sternberg SS, Waye JD, Schapiro M, Bond JH, Panish JF. Prevention of colorectal cancer by colonoscopic polypectomy. The National Polyp Study Workgroup. *N Engl J Med* 1993; **329**: 1977-1981 [PMID: 8247072 DOI: 10.1056/NEJM199312303292701]
- 3 Zauber AG, Winawer SJ, O'Brien MJ, Lansdorp-Vogelaar I, van Ballegooijen M, Hankey BF, Shi W, Bond JH, Schapiro M, Panish JF, Stewart ET, Waye JD. Colonoscopic polypectomy and long-term prevention of colorectal-cancer deaths. *N Engl J Med* 2012; **366**: 687-696 [PMID: 22356322 DOI: 10.1056/NEJMoa1100370]
- 4 Nishihara R, Wu K, Lochhead P, Morikawa T, Liao X, Qian ZR, Inamura K, Kim SA, Kuchiba A, Yamauchi M, Imamura Y, Willett WC, Rosner BA, Fuchs CS, Giovannucci E, Ogino S, Chan AT. Long-term colorectal-cancer incidence and mortality after lower endoscopy. *N Engl J Med* 2013; **369**: 1095-1105 [PMID: 24047059 DOI: 10.1056/NEJMoa1301969]
- 5 Kaminski MF, Regula J, Kraszewska E, Polkowski M, Wojciechowska U, Didkowska J, Zwierko M, Rupinski M, Nowacki MP, Butruk E. Quality indicators for colonoscopy and the risk of interval cancer. *N Engl J Med* 2010; **362**: 1795-1803 [PMID: 20463339 DOI: 10.1056/NEJMoa0907667]
- 6 Bressler B, Paszat LF, Chen Z, Rothwell DM, Vinden C, Rabeneck L. Rates of new or missed colorectal cancers after colonoscopy and their risk factors: a population-based analysis. *Gastroenterology* 2007; **132**: 96-102 [PMID: 17241863 DOI: 10.1053/j.gastro.2006.10.027]
- 7 Singh H, Nugent Z, Demers AA, Bernstein CN. Rate and predictors of early/missed colorectal cancers after colonoscopy in Manitoba: a population-based study. *Am J Gastroenterol* 2010; **105**: 2588-2596 [PMID: 20877348 DOI: 10.1038/ajg.2010.390]
- 8 Baxter NN, Sutradhar R, Forbes SS, Paszat LF, Saskin R, Rabeneck L. Analysis of administrative data finds endoscopist quality measures associated with postcolonoscopy colorectal cancer. *Gastroenterology* 2011; **140**: 65-72 [PMID: 20854818 DOI: 10.1053/j.gastro.2010.09.006]
- 9 Cooper GS, Xu F, Barnholtz Sloan JS, Schluchter MD, Koroukian SM. Prevalence and predictors of interval colorectal cancers in medicare beneficiaries. *Cancer* 2012; **118**: 3044-3052 [PMID: 21989586 DOI: 10.1002/cncr.26602]
- 10 Brenner H, Chang-Claude J, Seiler CM, Hoffmeister M. Interval cancers after negative colonoscopy: population-based case-control study. *Gut* 2012; **61**: 1576-1582 [PMID: 22200840 DOI: 10.1136/gutjnl-2011-301531]
- 11 Samadder NJ, Curtin K, Tuohy TM, Pappas L, Boucher K, Provenzale D, Rowe KG, Mineau GP, Smith K, Pimentel R, Kirchhoff AC, Burt RW. Characteristics of missed or interval colorectal cancer and patient survival: a population-based study. *Gastroenterology* 2014; **146**: 950-960 [PMID: 24417818 DOI: 10.1053/j.gastro.2014.01.013]
- 12 Robertson DJ, Lieberman DA, Winawer SJ, Ahnen DJ, Baron JA, Schatzkin A, Cross AJ, Zauber AG, Church TR, Lance P, Greenberg ER, Martínez ME. Colorectal cancers soon after colonoscopy: a pooled multicohort analysis. *Gut* 2014; **63**: 949-956 [PMID: 23793224 DOI: 10.1136/gutjnl-2012-303796]
- 13 Singh S, Singh PP, Murad MH, Singh H, Samadder NJ. Prevalence, risk factors, and outcomes of interval colorectal cancers: a systematic review and meta-analysis. *Am J Gastroenterol* 2014; **109**: 1375-1389 [PMID: 24957158 DOI: 10.1038/ajg.2014.171]
- 14 le Clercq CM, Bouwens MW, Rondagh EJ, Bakker CM, Keulen ET, de Ridder RJ, Winkens B, Masclee AA, Sanduleanu S. Postcolonoscopy colorectal cancers are preventable: a population-based study. *Gut* 2014; **63**: 957-963 [PMID: 23744612 DOI: 10.1136/gutjnl-2013-304880]
- 15 Buchner AM, Shahid MW, Heckman MG, McNeil RB, Cleveland P,

ACKNOWLEDGMENTS

We wish to thank Sachiyo Komai, Takahiro Utsumi, Akira

- Gill KR, Schore A, Ghabril M, Raimondo M, Gross SA, Wallace MB. High-definition colonoscopy detects colorectal polyps at a higher rate than standard white-light colonoscopy. *Clin Gastroenterol Hepatol* 2010; **8**: 364-370 [PMID: 19932768 DOI: 10.1016/j.cgh.2009.11.009]
- 16 **Tanaka S**, Saitoh Y, Matsuda T, Igarashi M, Matsumoto T, Iwao Y, Suzuki Y, Nishida H, Watanabe T, Sugai T, Sugihara K, Tsuruta O, Hirata I, Hiwatashi N, Saito H, Watanabe M, Sugano K, Shimosegawa T; Japanese Society of Gastroenterology. Evidence-based clinical practice guidelines for management of colorectal polyps. *J Gastroenterol* 2015; **50**: 252-260 [PMID: 25559129 DOI: 10.1007/s00535-014-1021-4]
 - 17 **Robertson DJ**, Greenberg ER, Beach M, Sandler RS, Ahnen D, Haile RW, Burke CA, Snover DC, Bresalier RS, McKeown-Eyssen G, Mandel JS, Bond JH, Van Stolk RU, Summers RW, Rothstein R, Church TR, Cole BF, Byers T, Mott L, Baron JA. Colorectal cancer in patients under close colonoscopic surveillance. *Gastroenterology* 2005; **129**: 34-41 [PMID: 16012932]
 - 18 **Saito Y**, Fukuzawa M, Matsuda T, Fukunaga S, Sakamoto T, Uraoka T, Nakajima T, Ikehara H, Fu KI, Itoi T, Fujii T. Clinical outcome of endoscopic submucosal dissection versus endoscopic mucosal resection of large colorectal tumors as determined by curative resection. *Surg Endosc* 2010; **24**: 343-352 [PMID: 19517168 DOI: 10.1007/s00464-009-0562-8]
 - 19 **Oka S**, Tanaka S, Saito Y, Iishi H, Kudo SE, Ikematsu H, Igarashi M, Saitoh Y, Inoue Y, Kobayashi K, Hisabe T, Tsuruta O, Sano Y, Yamano H, Shimizu S, Yahagi N, Watanabe T, Nakamura H, Fujii T, Ishikawa H, Sugihara K; Colorectal Endoscopic Resection Standardization Implementation Working Group of the Japanese Society for Cancer of the Colon and Rectum, Tokyo, Japan. Local recurrence after endoscopic resection for large colorectal neoplasia: a multicenter prospective study in Japan. *Am J Gastroenterol* 2015; **110**: 697-707 [PMID: 25848926 DOI: 10.1038/ajg.2015.96]
 - 20 **Burgess NG**, Bourke MJ. Endoscopic resection of colorectal lesions: The narrowing divide between East and West. *Dig Endosc* 2016; **28**: 296-305 [PMID: 26212579 DOI: 10.1111/den.12515]
 - 21 **Fuccio L**, Hassan C, Ponchon T, Mandolesi D, Farioli A, Cucchetti A, Frazzoni L, Bhandari P, Bellisario C, Bazzoli F, Repici A. Clinical outcomes after endoscopic submucosal dissection for colorectal neoplasia: a systematic review and meta-analysis. *Gastrointest Endosc* 2017; **86**: 74-86.e17 [PMID: 28254526 DOI: 10.1016/j.gie.2017.02.024]
 - 22 **Morris EJ**, Rutter MD, Finan PJ, Thomas JD, Valori R. Post-colonoscopy colorectal cancer (PCCRC) rates vary considerably depending on the method used to calculate them: a retrospective observational population-based study of PCCRC in the English National Health Service. *Gut* 2015; **64**: 1248-1256 [PMID: 25416064 DOI: 10.1136/gutjnl-2014-308362]
 - 23 **Shah HA**, Paszat LF, Saskin R, Stukel TA, Rabeneck L. Factors associated with incomplete colonoscopy: a population-based study. *Gastroenterology* 2007; **132**: 2297-2303 [PMID: 17570204 DOI: 10.1053/j.gastro.2007.03.032]
 - 24 **Kudo S**. Endoscopic mucosal resection of flat and depressed types of early colorectal cancer. *Endoscopy* 1993; **25**: 455-461 [PMID: 8261988 DOI: 10.1055/s-2007-1010367]
 - 25 **Kudo Se**, Lambert R, Allen JJ, Fujii H, Fujii T, Kashida H, Matsuda T, Mori M, Saito H, Shimoda T, Tanaka S, Watanabe H, Sung JJ, Feld AD, Inadomi JM, O'Brien MJ, Lieberman DA, Ransohoff DF, Soetikno RM, Triadafilopoulos G, Zauber A, Teixeira CR, Rey JF, Jaramillo E, Rubio CA, Van Gossum A, Jung M, Vieth M, Jass JR, Hurlstone PD. Nonpolypoid neoplastic lesions of the colorectal mucosa. *Gastrointest Endosc* 2008; **68**: S3-S47 [PMID: 18805238 DOI: 10.1016/j.gie.2008.07.052]
 - 26 **Matsuda T**, Saito Y, Hotta K, Sano Y, Fujii T. Prevalence and clinicopathological features of nonpolypoid colorectal neoplasms: should we pay more attention to identifying flat and depressed lesions? *Dig Endosc* 2010; **22** Suppl 1: S57-S62 [PMID: 20590774 DOI: 10.1111/j.1443-1661.2010.00967.x]
 - 27 **Westwood DA**, Alexakis N, Connor SJ. Transparent cap-assisted colonoscopy versus standard adult colonoscopy: a systematic review and meta-analysis. *Dis Colon Rectum* 2012; **55**: 218-225 [PMID: 22228167 DOI: 10.1097/DCR.0b013e31823461ef]
 - 28 **Biecker E**, Floer M, Heinecke A, Ströbel P, Böhme R, Schepke M, Meister T. Novel endocuff-assisted colonoscopy significantly increases the polyp detection rate: a randomized controlled trial. *J Clin Gastroenterol* 2015; **49**: 413-418 [PMID: 24921209 DOI: 10.1097/MCG.000000000000166]
 - 29 **Gralnek IM**. Emerging technological advancements in colonoscopy: Third Eye® Retroscope® and Third Eye® Panoramic(TM), Fuse® Full Spectrum Endoscopy® colonoscopy platform, Extra-Wide-Angle-View colonoscope, and NaviAid(TM) G-EYE(TM) balloon colonoscope. *Dig Endosc* 2015; **27**: 223-231 [PMID: 25251748 DOI: 10.1111/den.12382]
 - 30 **Pohl H**, Srivastava A, Bensen SP, Anderson P, Rothstein RI, Gordon SR, Levy LC, Toor A, Mackenzie TA, Rosch T, Robertson DJ. Incomplete polyp resection during colonoscopy-results of the complete adenoma resection (CARE) study. *Gastroenterology* 2013; **144**: 74-80.e1 [PMID: 23022496 DOI: 10.1053/j.gastro.2012.09.043]
 - 31 **Zhu H**, Zhang G, Yi X, Zhu X, Wu Y, Liang J, Zhang S, Zeng Y, Fan D, Yu X, He J, He G, Chen Z, Duan S, Zhang L. Histology subtypes and polyp size are associated with synchronous colorectal carcinoma of colorectal serrated polyps: a study of 499 serrated polyps. *Am J Cancer Res* 2014; **5**: 363-374 [PMID: 25628945]
 - 32 **Clark BT**, Rustagi T, Laine L. What level of bowel prep quality requires early repeat colonoscopy: systematic review and meta-analysis of the impact of preparation quality on adenoma detection rate. *Am J Gastroenterol* 2014; **109**: 1714-1723; quiz 1724 [PMID: 25135006 DOI: 10.1038/ajg.2014.232]

P- Reviewer: Langner C, Vujasinovic M **S- Editor:** Gong ZM

L- Editor: A **E- Editor:** Lu YJ





Published by **Baishideng Publishing Group Inc**
7901 Stoneridge Drive, Suite 501, Pleasanton, CA 94588, USA
Telephone: +1-925-223-8242
Fax: +1-925-223-8243
E-mail: bpgoffice@wjgnet.com
Help Desk: <http://www.f6publishing.com/helpdesk>
<http://www.wjgnet.com>



ISSN 1007-9327

