

# World Journal of *Gastrointestinal Endoscopy*

*World J Gastrointest Endosc* 2017 September 16; 9(9): 428-498



### REVIEW

- 428 Laparoscopic splenectomy: Current concepts

*Misiakos EP, Bagias G, Liakakos T, Machairas A*

- 438 Endoscopic diagnosis and treatment of early esophageal squamous neoplasia

*Shimamura Y, Ikeya T, Marcon N, Mosko JD*

### MINIREVIEWS

- 448 Laparoscopic resection of gastrointestinal stromal tumors: Does laparoscopic surgery provide an adequate oncologic resection?

*Kim JJ, Lim JY, Nguyen SQ*

- 456 Lumen apposing metal stents for pancreatic fluid collections: Recognition and management of complications

*DeSimone ML, Asombang AW, Berzin TM*

### ORIGINAL ARTICLE

#### Case Control Study

- 464 Clinical predictors for sessile serrated polyposis syndrome: A case control study

*Wu Y, Mullin A, Stoita A*

#### Retrospective Cohort Study

- 471 Colonoscopy quality with Entonox® vs intravenous conscious sedation: 18608 colonoscopy retrospective study

*Robertson AR, Kennedy NA, Robertson JA, Church NI, Noble CL*

#### Retrospective Study

- 480 Efficacy and safety of liquid nitrogen cryotherapy for treatment of Barrett's esophagus

*Suchniak-Mussari K, Dye CE, Moyer MT, Mathew A, McGarrity TJ, Gagliardi EM, Maranki JL, Levenick JM*

- 486 Novel and supplementary management of pancreatic fluid collections: Endoscopic ultrasound-guided drainage

*Hao SJ, Xu WJ, Di Y, Yao L, He H, Yang F, Jin C, Zhong L, Fu DL*

### CASE REPORT

- 494 Successful endoscopic removal of three embedded esophageal self-expanding metal stents

*Liu XQ, Zhou M, Shi WX, Qi YY, Liu H, Li B, Xu HW*

## Contents

*World Journal of Gastrointestinal Endoscopy*  
Volume 9 Number 9 September 16, 2017

### ABOUT COVER

Editorial Board Member of *World Journal of Gastrointestinal Endoscopy*, Dr. Chia-Long Lee, MD, Associate Professor, Division of Gastroenterology and Hepatology, Department of Internal Medicine, Cathay General Hospital, Taipei 10650, Taiwan

### AIM AND SCOPE

*World Journal of Gastrointestinal Endoscopy* (*World J Gastrointest Endosc*, *WJGE*, online ISSN 1948-5190, DOI: 10.4253) is a peer-reviewed open access (OA) academic journal that aims to guide clinical practice and improve diagnostic and therapeutic skills of clinicians.

*WJGE* covers topics concerning gastroscopy, intestinal endoscopy, colonoscopy, capsule endoscopy, laparoscopy, interventional diagnosis and therapy, as well as advances in technology. Emphasis is placed on the clinical practice of treating gastrointestinal diseases with or under endoscopy.

We encourage authors to submit their manuscripts to *WJGE*. We will give priority to manuscripts that are supported by major national and international foundations and those that are of great clinical significance.

### INDEXING/ABSTRACTING

*World Journal of Gastrointestinal Endoscopy* is now indexed in Emerging Sources Citation Index (Web of Science), PubMed, and PubMed Central.

### FLYLEAF

#### I-III Editorial Board

### EDITORS FOR THIS ISSUE

Responsible Assistant Editor: *Xiang Li*  
Responsible Electronic Editor: *Ya-Jing Lu*  
Proofing Editor-in-Chief: *Lian-Sheng Ma*

Responsible Science Editor: *Fang-Fang Ji*  
Proofing Editorial Office Director: *Jin-Lai Wang*

NAME OF JOURNAL  
*World Journal of Gastrointestinal Endoscopy*

ISSN  
ISSN 1948-5190 (online)

LAUNCH DATE  
October 15, 2009

FREQUENCY  
Monthly

EDITORS-IN-CHIEF  
**Atsushi Imagawa, PhD, Director, Doctor**, Department of Gastroenterology, Mitoyo General Hospital, Kan-onji, Kagawa 769-1695, Japan

**Juan Manuel Herrerias Gutierrez, PhD, Academic Fellow, Chief Doctor, Professor**, Unidad de Gestión Clínica de Aparato Digestivo, Hospital Universitario Virgen Macarena, Sevilla 41009, Spain

EDITORIAL BOARD MEMBERS  
All editorial board members resources online at <http://www.wjgnet.com>

[www.wjgnet.com/1948-5190/editorialboard.htm](http://www.wjgnet.com/1948-5190/editorialboard.htm)

EDITORIAL OFFICE  
Xiu-Xia Song, Director  
*World Journal of Gastrointestinal Endoscopy*  
Baishideng Publishing Group Inc  
7901 Stoneridge Drive, Suite 501, Pleasanton, CA 94588, USA  
Telephone: +1-925-2238242  
Fax: +1-925-2238243  
E-mail: [editorialoffice@wjgnet.com](mailto:editorialoffice@wjgnet.com)  
Help Desk: <http://www.f6publishing.com/helpdesk>  
<http://www.wjgnet.com>

PUBLISHER  
Baishideng Publishing Group Inc  
7901 Stoneridge Drive, Suite 501, Pleasanton, CA 94588, USA  
Telephone: +1-925-2238242  
Fax: +1-925-2238243  
E-mail: [bpgoffice@wjgnet.com](mailto:bpgoffice@wjgnet.com)  
Help Desk: <http://www.f6publishing.com/helpdesk>  
<http://www.wjgnet.com>

PUBLICATION DATE  
September 16, 2017

COPYRIGHT  
© 2017 Baishideng Publishing Group Inc. Articles published by this Open-Access journal are distributed under the terms of the Creative Commons Attribution Non-commercial License, which permits use, distribution, and reproduction in any medium, provided the original work is properly cited, the use is non commercial and is otherwise in compliance with the license.

SPECIAL STATEMENT  
All articles published in journals owned by the Baishideng Publishing Group (BPG) represent the views and opinions of their authors, and not the views, opinions or policies of the BPG, except where otherwise explicitly indicated.

INSTRUCTIONS TO AUTHORS  
<http://www.wjgnet.com/bpg/gerinfo/204>

ONLINE SUBMISSION  
<http://www.f6publishing.com>

## Endoscopic diagnosis and treatment of early esophageal squamous neoplasia

Yuto Shimamura, Takashi Ikeya, Norman Marcon, Jeffrey D Mosko

Yuto Shimamura, Norman Marcon, Jeffrey D Mosko, Division of Gastroenterology, St. Michael's Hospital, University of Toronto, Toronto, ON M5B1W8, Canada

Takashi Ikeya, Department of Gastroenterology, St. Luke's International Hospital, Tokyo 104-8560, Japan

**Author contributions:** Shimamura Y, Ikeya T, Marcon N and Mosko JD contributed equally to this work; Shimamura Y and Mosko JD provided substantial contribution to conception and design, and wrote the manuscript; Ikeya T and Marcon N provided substantial contribution to acquisition of data, and revising it critically for important intellectual content.

**Conflict-of-interest statement:** No potential conflicts of interest.

**Open-Access:** This article is an open-access article which was selected by an in-house editor and fully peer-reviewed by external reviewers. It is distributed in accordance with the Creative Commons Attribution Non Commercial (CC BY-NC 4.0) license, which permits others to distribute, remix, adapt, build upon this work non-commercially, and license their derivative works on different terms, provided the original work is properly cited and the use is non-commercial. See: <http://creativecommons.org/licenses/by-nc/4.0/>

**Manuscript source:** Invited manuscript

**Correspondence to:** Jeffrey D Mosko, MD, Division of Gastroenterology, St. Michael's Hospital, University of Toronto, 30 Bond Street, Toronto, ON M5B1W8, Canada. [moskoj@smh.ca](mailto:moskoj@smh.ca)  
**Telephone:** +1-416-8645684

**Received:** March 3, 2017

**Peer-review started:** March 7, 2017

**First decision:** April 17, 2017

**Revised:** May 14, 2017

**Accepted:** August 16, 2017

**Article in press:** August 17, 2017

**Published online:** September 16, 2017

### Abstract

Esophageal cancer is one of the leading causes of cancer-

related death and is associated with high morbidity and mortality. It carries a poor prognosis as more than half of patients present with advanced and unresectable disease. One contributing factor is the increased risk of lymph node metastases at early stages of disease. As such, it is essential to detect squamous cell neoplasia (SCN) at an early stage. In order to risk stratify lesions, endoscopists must be able to perform image enhanced endoscopy including magnification and Lugol's chromoendoscopy. The assessment of both the horizontal extent and depth of any lesion is also of utmost importance prior to treatment. Endoscopic mucosal resection and submucosal dissection remain the standard of care with literature supportive their respective use. Radiofrequency ablation and other endoscopic treatments are currently available although should not be considered first line at this time. Our objective is to review the current options for the endoscopic diagnosis and treatment of esophageal SCN.

**Key words:** Esophageal squamous cell neoplasia; Image enhanced endoscopy; Esophageal squamous cell carcinoma; endoscopic detection; Chromoendoscopy; Endoscopic mucosal resection; Endoscopic submucosal dissection

© **The Author(s) 2017.** Published by Baishideng Publishing Group Inc. All rights reserved.

**Core tip:** Esophageal squamous cell carcinoma is one of the leading causes of cancer death. Improving the detection of early stage lesions remains of utmost importance as these lesions can be cured with endoscopic therapy. Endoscopists have many advanced imaging modalities available to assist in risk stratifying lesions. Endoscopic mucosal resection and submucosal dissection remain the standard of care with literature supportive their respective use. Radiofrequency ablation and other endoscopic treatments are currently available although should not be considered first line at this time. As we await improved endoscopic technologies, endoscopists everywhere must remain vigilant in their endoscopic evaluation of the esophagus during each and every endoscopy performed.

Shimamura Y, Ikeya T, Marcon N, Mosko JD. Endoscopic diagnosis and treatment of early esophageal squamous neoplasia. *World J Gastrointest Endosc* 2017; 9(9): 438-447 Available from: URL: <http://www.wjgnet.com/1948-5190/full/v9/i9/438.htm> DOI: <http://dx.doi.org/10.4253/wjge.v9.i9.438>

## INTRODUCTION

Esophageal cancer is one of the leading causes of cancer-related death and is associated with high morbidity and mortality<sup>[1,2]</sup>. There are two predominant histologic types of esophageal cancer; squamous cell carcinoma (SCC) and Barrett's esophagus related adenocarcinoma. The incidence of SCC is higher along two geographic belts, one from North-central China through central Asia to Northern Iran, and the other from Eastern to Southern Africa. Despite the predominance of esophageal adenocarcinoma in Western countries, SCC remains the most common subtype worldwide. It carries a poor prognosis as more than half of patients present with advanced and unresectable disease<sup>[3]</sup>. One contributing factor to this phenomenon is the increased risk of lymph node metastases at early stages of disease. While the risk of lymph node metastases is almost zero for EP (intraepithelial) and LPM (lamina propria) lesions, the risk increases to 8%-15% for lesions invading into the muscularis mucosa (MM), 11%-53% for lesions invading SM1 (submucosal layer to 200  $\mu$ m or less) and 30%-54% for SM2 and deeper lesions<sup>[4-7]</sup>. For patients with adenocarcinoma confined to the MM however, the rate of lymph node metastases ranges from 0%-4% and has been estimated at 15%-25% for those with submucosal invasion<sup>[8-10]</sup>. With data showing a higher risk of lymph node metastases in SCC, detecting squamous cell neoplasia (squamous high grade intraepithelial neoplasia, HGIN, and early SCC) at an early stage becomes extremely important with subsequent interventions that can improve patient outcomes.

The objective of this article is to review the current options for the endoscopic diagnosis and treatment of esophageal squamous cell neoplasia (SCN).

## ESOPHAGEAL SCC

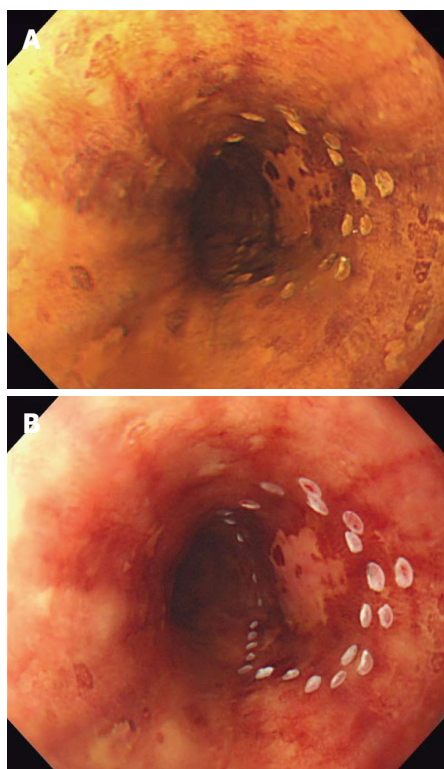
Esophageal SCC is most prevalent in the sixth and seventh decades; with a male to female ratio of 3:1<sup>[11]</sup>. Known risk factors include regular alcohol consumption, smoking, aldehyde dehydrogenase type 2 deficiency, low fruit and vegetable intake, selenium, zinc, and vitamin E deficiency, high exposure to areca nuts and polycyclic aromatic hydrocarbons and poor oral hygiene. Caustic injuries, tylosis, achalasia, and human papillomavirus (HPV) infection are other known risk factors<sup>[3,12-15]</sup>. As well, the risk of developing synchronous and/or metachronous lesions is high in patients with a history of head and neck and esophageal SCC. All of the aforementioned risk factors must be considered when

determining who may benefit from screening.

There is currently no globally accepted endoscopic screening program for esophageal SCC. This is in spite of an improved understanding of the risk factors. The data in support of screening is not as robust as for Barrett's esophagus and the detection of Barrett's associated dysplasia. Studies on endoscopic surveillance for high-risk patients with histories of head and neck cancer have shown that it is feasible and effective<sup>[16-18]</sup>. A recent study from China revealed that endoscopic screening and intervention significantly lowered mortality caused by esophageal SCC<sup>[2]</sup>. Wei *et al*<sup>[2]</sup> compared the incidence and mortality of esophageal SCC in two communities (endoscopic screening vs control). In the intervention group, detected lesions were treated according to their respective stages. Although there was an initial increased incidence of SCC in the intervention group, likely related to the effect of screening, the cumulative incidence (over the full ten year follow-up period) of esophageal SCC in the screened group became lower than in the control group (4.2% vs 5.9%, respectively,  $P < 0.01$ ). A reduction in cumulative mortality was seen in the intervention group (3.35% vs 5.05% respectively,  $P < 0.001$ ). This study supports the notion that screening (and subsequent intervention) can lead to a reduction in the incidence of and mortality from esophageal SCC.

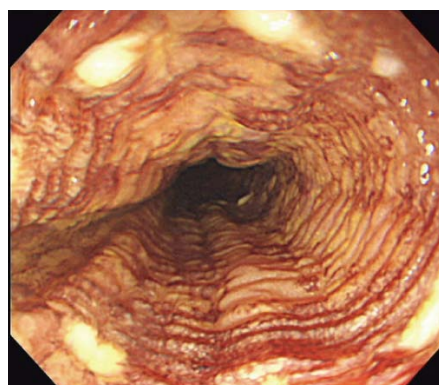
## ENDOSCOPIC DETECTION

Endoscopic screening/detection is performed by using a combination of conventional and high-definition white light imaging (WLI), Lugol's chromoendoscopy (CE), and image-enhanced endoscopy (IEE). The detection of early lesions with WLI can be challenging since the mucosal abnormalities present are often difficult to observe. The features used to detect dysplasia using WLI include the disappearance of the mucosal vascular network, nodular surface, subtle white coating, and erythema. The endoscope should be maneuvered slowly and carefully to allow for a thorough assessment of the entire esophagus paying special attention to commonly missed areas on the right lateral wall and in the narrow cervical esophagus. Observation using moderate insufflation is recommended as excessive insufflation may make it more difficult to identify flat lesions. Lao-Sirieix *et al*<sup>[19]</sup> showed that the sensitivity and specificity of WLI for the detection of severe dysplasia or cancer was 62% and 79% respectively. One must also pay close attention to the oropharynx when inserting the gastroscope, especially in patients known to have esophageal squamous neoplasia given the high risk of synchronous lesions. A recent study showed that 8.6% of patients followed over the 2-year study period were found to have metachronous head and neck SCC even after treatment of their esophageal SCC<sup>[20]</sup>. Asking patients to perform a valsalva maneuver can be considered to facilitate clear visualization of the hypopharyngeal area.



**Figure 1** Chromoendoscopy with Lugol's iodine. A: Unstained area seen within the marking after spraying diluted Lugol's solution with spray catheter; B: After observing for several minutes, the unstained area turned into pink color, suggesting HGIN and squamous cell carcinoma.

Chromoendoscopy with Lugol's iodine has become the standard of care for the detection of esophageal SCC and synchronous lesions as well as defining the extent of lesions. Lugol's iodine adheres to the glycogen of normal squamous epithelium leading to staining. Neoplastic lesions lack glycogen and therefore remain unstained. A thorough examination with Lugol's CE includes an assessment for the following: (1) pink color sign (PC sign): This finding can be seen following Lugol's staining where unstained areas change to a pink color after 2-3 min. While not well understood, it is thought that this phenomenon is most likely related to an absence of the keratinous layer<sup>[21]</sup>. This finding can be used to distinguish HGIN and SCC from LGIN, inflammation, and epithelial atrophy and has been shown to have high diagnostic accuracy with a 91.9% sensitivity and 94.0% specificity<sup>[22]</sup> (Figure 1); (2) tatami sign: This is the pattern commonly seen after iodine staining and is named after "Tatami", a type of mat used as flooring material in traditional Japanese rooms. This is seen as regular, fine circular folds of the unstained area. This occurs with lesions invading no deeper than the MM<sup>[23]</sup> (Figure 2); and (3) multiple iodine unstained areas: This is a frequent finding seen in patients with esophageal SCN and is also known as "leopard-skin appearance". This finding implies a high risk of synchronous lesions and/or metachronous recurrence<sup>[24]</sup>. A recent study following patients for

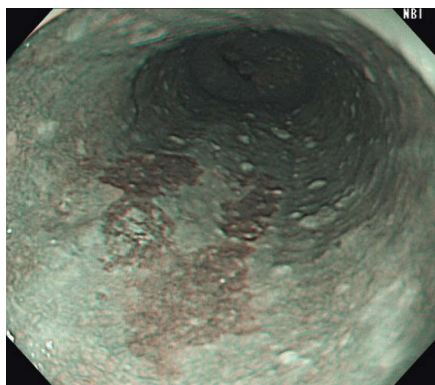


**Figure 2** "Tatami sign" is commonly seen after iodine staining. It is characterized by regular, fine circular folds of the Lugol's unstained area. This is typically seen when lesions are confined to the muscularis mucosal.

2 years after treatment of esophageal SCC revealed that 24.7% of patients who had 10 or more Lugol's unstained areas developed metachronous SCC<sup>[20]</sup>.

By picking up on the above findings with Lugol's CE, lesions requiring endoscopic treatment can be identified. However, there are some disadvantages to using it. Firstly, staining with Lugol's iodine is known to cause retrosternal chest discomfort and carries a risk of allergic reaction. Secondly, the aforementioned finding of unstained areas has been shown to have high sensitivity but low specificity for detecting HGIN and early SCC. Finally, re-epithelialization after mucosal damage, often caused by the chemical esophagitis from Lugol's staining, may obscure delineation of lesions when performing subsequent endoscopic resection<sup>[25]</sup>. To overcome some of these concerns, less concentrated Lugol's solution with concentrations of 0.5%-1% or less (vs 3% traditionally) are now used to reduce mucosal irritation. In addition, spraying 20 mL of 20% sodium thiosulfate solution (STS; 10% Detoxol, Banyu Pharmaceutical Co. Ltd., Tokyo, Japan) can be performed to neutralize the Lugol's iodine solution<sup>[26]</sup>. Aspiration of the residual Lugol's iodine from the stomach also minimizes mucosal irritation.

IEE augments the detection, diagnosis and treatment of esophageal SCN. Narrow-band imaging (NBI) (Olympus, Japan), Pentax I-Scan (Pentax, Japan), and the Fujinon Intelligence Colour Enhancement system (FICE, Fujinon Corporation, Japan) are frequently applied electronic-based endoscopic modalities that target the microvessels of the mucosa. Although all of the above can be utilized to detect early esophageal SCN, narrow-band imaging (NBI) is used most commonly. It uses specific blue and green wavelength light to illuminate blood vessels more distinctly in comparison to WLI. Non-magnification NBI (NM-NBI) allows endoscopists to recognize esophageal SCN as brownish areas (Figure 3). In Japan, it is standard to utilize IEE during the observation of the oropharynx and esophagus during endoscope withdrawal. As opposed to Lugol's CE, using IEE is safe and easily performed with the push of a single button on the endoscope.



**Figure 3** Brownish areas seen under non-magnifying narrow-band imaging can be seen with inflammation, low-grade and high-grade intraepithelial neoplasm, and squamous cell carcinoma.

### **White-light imaging vs image enhanced endoscopy vs Lugol's chromoendoscopy**

A multicenter, prospective, randomized, controlled trial conducted in 2010 comparing WLI and NM-NBI revealed a significantly higher detection rate of small (< 5 mm), early SCC lesions with NM-NBI when compared to WLI<sup>[27]</sup>. Nagami *et al.*<sup>[28]</sup> compared NM-NBI and Lugol's CE in 202 patients with risk factors for esophageal SCC. The operating characteristics of NM-NBI were superior to that of Lugol's CE as the accuracy, sensitivity, and specificity of NM-NBI were 77.0%, 88.3%, and 75.2% respectively, compared with 68.0%, 94.2%, and 64.0% respectively for unstained areas detected by Lugol's CE. This study was limited, however, by the fact that the authors did not incorporate the pink color sign into their assessments. Goda *et al.*<sup>[29]</sup> conducted a randomized, non-inferiority trial comparing ME-NBI to the PC sign seen on Lugol's CE. They found no significant differences between these two techniques. ME-NBI showed a significantly shorter examination time with similar accuracy, however was less reliable in patients with multiple Lugol's unstained areas. As such, the optimal use of these modalities remains unclear. We recommend that a standard screening endoscopy should include WLI and NM-NBI. When mucosal changes are seen on WLI or brownish areas identified on NM-NBI, ME-NBI or Lugol's CE should be considered for further assessment.

### **Lateral margin assessment**

After detecting a lesion, it is important to delineate the lateral extent of the lesion in order to achieve R0 resection. This is accomplished *via* careful inspection with a combination of WLI, IEE, and Lugol's CE<sup>[30-32]</sup>. Typically, the assessment of lateral extent is done with Lugol's CE. It is important to keep in mind that if the preoperative assessment is done with Lugol's CE, it may cause chemical esophagitis resulting in re-epithelialization thereby complicating the demarcation of tumors at the time of endoscopic treatment<sup>[25]</sup>. As such, there is a theoretical advantage to performing Lugol's CE and endoscopic resection during the index

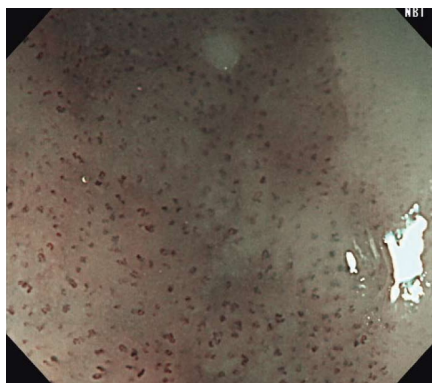
endoscopy and/or using IEE alone (without Lugol's CE) to examine the lateral margins of a lesion.

### **Depth assessment**

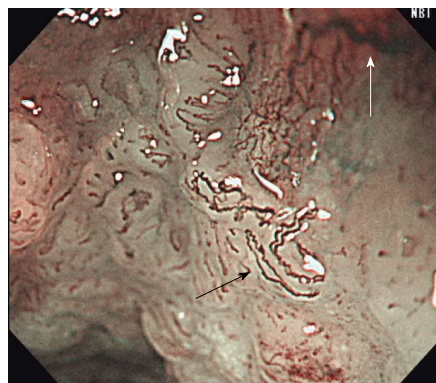
After detecting esophageal SCN, it is of utmost importance to predict a lesion's depth of invasion to determine if endoscopic resection is possible. Such assessment begins with WLI and the use of the Paris classification<sup>[33]</sup>. Paris 0-II a, 0-II b, 0-II c lesions, which are flat or slightly elevated/depressed lesions, are generally confined to the EP and LPM. Slight color change with redness and irregular elevation/depression raise the possibility of deeper invasion into the MM and SM1. If the lesion has a large, broad-based protrusion, crater, and/or stiffened wall, the lesion likely invades deeper. A majority of protruded (Paris classification 0-I) and/or excavated (0-III) lesions usually represent invasion into the submucosa or deeper. A recent multicenter, prospective study showed that the accuracy of invasion depth using WLI alone was 71.4%. The sensitivity and specificity for MM lesions was 61.1% and 77.4% respectively<sup>[34]</sup>.

Recently, ME-NBI has been utilized to assess lesion depth. This allows for the assessment of the surface capillary microvasculature or intraepithelial papillary capillary loop (IPCL), a superficial fine vascular network of the esophageal mucosa. Attention should be made to the four signs of abnormal vessels which include dilatation, tortuosity, caliber change, and non-uniformity. The IPCL is known to change morphologically depending on the severity of structural irregularities in the esophageal mucosa. The Japanese Esophageal Society has developed a simplified magnifying endoscopic classification for estimating invasion depth based on the degree of irregularity of the microvascular morphology<sup>[35]</sup>. The microvessels are classified into two main categories; Type A or B. Microvessels are considered Type B vessels when all four features of abnormal IPCL (dilatation, tortuosity, caliber change, and non-uniformity) are seen. Type B can be further sub-classified into B1, B2, and B3. B1 vessels can be seen as dot-like microvessels under NM-NBI or low magnification ME-NBI (Figure 4). B2 vessels can be recognized as stretched and markedly elongated microvessels. B3 vessels are dilated and abnormal vessels (Figure 5). When type B1, B2, B3 microvessels are identified on ME-NBI, the extent of invasion is likely into the EP-LPM, MM-SM1, and SM2 or deeper, respectively. Goda *et al.*<sup>[36]</sup> reported that ME-NBI could differentiate intramucosal cancer from submucosal cancer with a sensitivity and specificity of 78% and 95% respectively. On the other hand, a recent multicenter, prospective study showed no additional benefit of adding ME-NBI to WLI for the assessment of invasion depth<sup>[34]</sup>.

Endoscopic ultrasound (EUS) is another modality used to assess the depth of invasion of esophageal SCC. Its utility is to rule out invasion into the muscularis propria and detect regional lymphadenopathy. A meta-analysis reported that among patients with T1 disease, EUS had a pooled sensitivity in differentiating T1a and



**Figure 4** Abnormal intraepithelial papillary capillary loop, a superficial fine vascular network of the esophageal mucosa. Type B1 vessels, shown here, are identified as dot-like microvessels under non-magnifying narrow-band imaging or low magnified ME-NBI.



**Figure 5** Abnormal intraepithelial papillary capillary loop. Type B2 (black arrow) can be recognized as stretched and markedly elongated microvessels vs type B3 (white arrow) microvessels which are highly dilated, abnormal vessels.

T1b lesions of 84% and 83%, and a specificity of 91% and 89%. For T4 lesions, EUS had a pooled sensitivity of 84% and specificity of 96%. The overall accuracy of EUS for T-staging was 79% and 71% for N-staging<sup>[37]</sup>. In spite of its limitations (time, expertise required, expense and resolution), EUS is currently considered a standard modality used in the evaluation of lesion extent and regional lymphadenopathy. CT scan and PET-CT scan are adjunct modalities that should be considered in the evaluation of regional lymphadenopathy<sup>[32]</sup>.

### Other diagnostic modalities

There are other emerging advanced diagnostic imaging modalities such as confocal laser endomicroscopy (CLE) and optical coherence tomography (OCT) that may play a role in screening and/or diagnosis of SCC. Probe-based confocal laser endomicroscopy (pCLE) allows for real-time *in-vivo* histologic imaging of the esophagus. Its use has been shown to improve the detection of BE-associated dysplasia when compared to WLE alone<sup>[38]</sup>. Although there are proposed diagnostic criteria for the detection of squamous epithelial cells with pCLE (irregular arrangement, increased diameter, irregular shape and long branching of the IPCL), the diagnostic accuracy of pCLE is not well known<sup>[39]</sup>. pCLE is limited by its imaging depth and field of view and thus standard imaging with WLE and chromoendoscopy is required for detecting lesions. Recently, Guo *et al*<sup>[40]</sup> described the diagnostic value of pCLE for esophageal SCN. The authors reported high sensitivity, specificity, and accuracy of pCLE for SCN as 94.6%, 90.7%, and 92.3% respectively. In the other recent study comparing ME-NBI and probe-based CLE, pCLE possessed higher specificity and accuracy<sup>[41]</sup>.

Volumetric laser endomicroscopy, a second-generation optical coherence technology, is an advanced, non-invasive imaging modality that uses infrared light to produce real-time high-resolution cross-sectional images of the GI tract. Its resolution (10-20  $\mu\text{m}$ ) is extremely fine approaching that of histopathology. This technology has been applied to the detection of Barrett's esophagus

related dysplasia in clinical practice<sup>[42-44]</sup>. For esophageal SCC, it has been reported to be useful in assessing tumor invasion depth. Hatta *et al*<sup>[45]</sup> utilized OCT for pre-operative staging with a high overall accuracy rate. Its ability to select lesions for endoscopic resection was significantly better than EUS (94.6% vs 80.6%,  $P < 0.05$ ). OCT is limited by its inability to accurately detect dysplasia and therefore requires further study, like pCLE, before it can be incorporated into clinical practice. In addition to the aforementioned limitations, we have further concerns with respect to cost effectiveness, acquisition of expertise in image interpretation and indication standardization that may limit widespread use.

## TREATMENT OF ESOPHAGEAL SQUAMOUS CELL NEOPLASIA

Traditionally, esophagectomy and lymph node dissection have been the standard of care for the treatment of esophageal cancer including early esophageal SCC. However, the paradigm has shifted to less invasive therapy with improved techniques in endoscopic resection. There are two widely accepted endoscopic resection methods: Endoscopic mucosal resection (EMR) and endoscopic submucosal dissection (ESD). These are indicated when there is minimal to no risk of lymph node metastases.

### EMR

EMR has been widely accepted as a safe and effective treatment for early esophageal SCC. Cap-assisted mucosectomy (EMR-C) and EMR-ligation (EMR-L) are the two methods of performing EMR. A randomized trial comparing EMR-L with multiband mucosectomy (MBM) and EMR-C for endoscopic piecemeal resection of large SCN (2-6 cm, maximum 2/3 of esophageal circumference) has been conducted<sup>[46]</sup>. Both methods were highly effective and safe, however EMR-L with MBM was faster and less expensive. Although large lesions can be treated with piecemeal EMR, this

technique is limited by its inability to achieve oncologic (R0) resections. In the aforementioned study, a high local recurrence rate was seen in lesions exceeding 2 cm and in lesions subject to piecemeal resection in five or more pieces. The optimal size for EMR is still debatable. To overcome the limitation of piecemeal resection, endoscopic submucosal dissection (ESD) has become the treatment of choice for *en bloc* resection of larger lesions.

### ESD

ESD was initially introduced in the 1990s to allow *en bloc* resection with detailed pathological assessment regardless of lesion size<sup>[47]</sup>. This method spread rapidly as it optimized the rate of *en bloc* resection in gastric and colonic lesions. Yet, ESD is known to be more time consuming and associated with higher rates of complications such as bleeding and perforation. This is especially true in the esophagus. Esophageal ESD is technically more challenging than gastric ESD due to a narrower lumen thus limiting endoscopic maneuvers. Movement due to heartbeat and respiration are other factors making this technique more challenging. Moreover, the esophagus has a thin muscle wall and an absence of serosal fat leading to higher perforation rates. Previous literature in Japan has shown that ESD in the esophagus has a high *en bloc* resection rate (95%-100%), a low local recurrence rate (0%-1%), and is a relatively safe procedure with perforation occurring in 0%-6% of cases. However, most early studies were limited by small sample sizes and short follow-up. Tsujii *et al.*<sup>[48]</sup> recently reported clinical outcomes of ESD in a multicenter, retrospective, cohort study. A total of 368 superficial esophageal neoplasms in 307 patients were treated by ESD at 11 hospitals. The *en bloc* resection and complete resection rates were 96.7% and 84.5% respectively. Perforation, bleeding and esophageal strictures occurred in 5.2%, 0%, and 7.1% of patients, respectively. All complications were successfully managed conservatively<sup>[48]</sup>. More recent studies show an *en bloc* resection rate between 83%-100%, R0 resection rate between 78%-100% and local recurrence rates of 0%-6%<sup>[49-57]</sup>. The experience of Western endoscopists with ESD in esophageal SCC was recently published. Probst *et al.*<sup>[58]</sup> reported the outcome of 24 SCC undergoing ESD resulting in *en bloc* resection in 100% and R0 resection in 91.7% of the cases. Disease-specific survival was 95.8% and overall survival was 66.7% over a mean follow-up period of 38 mo<sup>[58]</sup>.

### EMR vs ESD

Although there is ongoing debate as to what size lesions should be resected by ESD vs EMR, the European Society of Gastrointestinal Endoscopy (ESGE) recommends endoscopic *en bloc* resection for superficial esophageal SCC without obvious submucosal involvement. EMR may be considered for lesions smaller than 20 mm if *en bloc* resection is feasible. If not, ESD should be performed. According to the Japanese Esophageal Society, absolute

indications for endoscopic mucosal resection are: flat intramucosal cancers confined to the epithelium and lamina propria that occupy less than 2/3 of the circumference of the lumen of the esophagus. Relative indications include cancers involving the muscularis mucosa or < 200  $\mu$ m of invasion into the submucosa, and lesions extending more than 3/4 of the circumference of the lumen<sup>[59]</sup>.

The literature comparing these two methods is scant. Ishihara *et al.*<sup>[60]</sup> analyzed the outcomes of EMR and ESD in 171 superficial esophageal SCC's less than 20 mm in diameter. For lesions less than 15 mm, there was no difference in local recurrence, R0 resection, and *en bloc* resection concluding that EMR is feasible for treating lesions this small. Recently, another retrospective study compared the efficacy and safety of EMR-L using MBM and ESD. They found no statistical difference in the rate of complete resection between the two methods. For lesions over 15 mm however, ESD had a significantly higher rate of *en bloc* (100%) and curative resection (92.3%) compared to MBM (44.8 and 41%,  $P < 0.05$ ). As expected, ESD procedure times were longer ( $84 \pm 35$  min vs  $38 \pm 11$  min). In addition, ESD had higher rate of major bleeding (16.7% vs 1.85%) and perforation (8.3% vs 0%). As such, EMR appears safe and effective for the treatment of lesions 15 mm or smaller leaving ESD as the treatment of choice for larger lesions<sup>[61]</sup>.

### Post-endoscopic resection strictures

One of the major complications of endoscopic resection for large SCN is esophageal stricturing, which can severely affect patients' quality of life. Treatment related strictures requiring multiple sessions of endoscopic dilation can occur when resecting lesions involving over half of the esophageal circumference. Lesions greater than or equal to 3/4 of the circumference of the lumen are strongly associated with stricturing<sup>[62,63]</sup>. In addition, muscle layer damage and defects larger than 5 cm after circumferential ESD were significant factors associated with refractory stenosis<sup>[64]</sup>. Typically, steroids injected locally and/or taken orally are used to prevent post-ESD strictures for lesions involving over 3/4 of the esophageal circumference. There are differences in the timing of administration, route of administration (local vs oral), and the dosages among institutions. The most common strategy in Japan is to inject triamcinolone into the base of the post-ESD ulcer directly post-procedure or on post-procedure day one. With the prevalence of this complication, more studies are needed to further elucidate the ideal prevention strategies post-endoscopic resection.

### Post-endoscopic resection therapy

Treatment post-endoscopic resection is determined based on the pathological evaluation of the resected specimen. No additional treatment is required for EP and LPM lesions with no lymphovascular invasion as the probability of lymph node metastases approaches

0%. Although MM and SM1 lesions have a risk of lymph node metastases, most can be predicted based on the presence of lymphovascular invasion or poor differentiation in the resected specimen. In 2011, Moriya *et al.*<sup>[65]</sup> showed that well-differentiated MM and SM1 tumors without lymphovascular invasion had minimal risk of lymph node involvement. Therefore, close follow-up is acceptable for such lesions. Surgery and/or chemoradiation should be considered for lesions with lymphovascular invasion or SM2 or deeper involvement. The 5-year overall survival rate for patients with EP, LPM, MM, and SM cancers is 90.5%, 71.1%, and 70.8% respectively<sup>[66]</sup>. As mentioned, it is very important to consider the risk of metachronous lesions in patients with esophageal SCC and therefore, close endoscopic surveillance is needed.

### Radiofrequency ablation

Radiofrequency ablation (RFA) has emerged as the ablative technique of choice for Barrett's esophagus related dysplasia. Since a multicenter, randomized, sham-controlled study demonstrated decreased disease progression to malignancy along with high rates of dysplasia and intestinal metaplasia eradication, RFA has been used to treat BE in patients with HGD<sup>[67]</sup>. However, the role of RFA in squamous neoplasia remains unclear. RFA involves the direct application of thermal energy to the targeted area using either a balloon for circumferential treatment (HALO360; BARRX, Sunnyvale, California, United States), a probe attached to the scope (HALO90, HALO60, HALO-ultra; BARRX) or a through-the-scope catheter for focal therapy (Channel Catheter; BARRX). The clear benefit and role of radiofrequency ablation in SCN has not yet been proven. There are reports with small patient populations describing a possible role for RFA in early esophageal SCN<sup>[68-70]</sup>. The largest study consists of a total of 96 patients including 42 patients with HGIN and 9 with early SCC. At 3 and 12 mo post-RFA treatment, 73% (70/96) and 84% (81/96) showed an absence of dysplasia and SCC (considered a complete response). Two patients progressed in spite of RFA (MGIN to HGIN and HGIN to SCC respectively) however both were treated endoscopically and achieved complete response with additional ablations. Strictures occurred in 20 patients (21%), all of whom underwent circumferential RFA. Lugol's CE with RFA (12 J/cm<sup>2</sup>, single application, no cleaning) was the favored baseline circumferential RFA technique. In patients with SCN, RFA appears to be associated with a high response rate and an acceptable safety profile<sup>[70]</sup>.

The clear disadvantage of ablative therapy is that no tissue is obtained for histopathological assessment. Proper staging and risk stratification with various endoscopic techniques described above must be done prior to treatment to appropriately select patients thereby avoiding treatment failures. On the other hand, there may be a role for RFA in cases where endoscopic resection is challenging. The feasibility of RFA for treating early SCC on or adjacent to esophageal varices

was recently reported. While this study was limited to only 8 patients (5 HGIN and 3 SCC), 6 patients achieved complete response after a single circumferential treatment. All achieved a complete response at 12 mo with further focal ablation therapy. Although there is data revealing that RFA is both safe and efficacious, it should only be considered when the lesion is deemed to be non-invasive. Currently, endoscopic resection with histological evaluation should be the first choice and we believe that we should be conservative on applying RFA to squamous cell neoplasia. We need more studies regarding safety and efficacy of RFA in squamous cell neoplasia.

Other ablative therapies such as photodynamic therapy (PDT), argon plasma coagulation (APC) and Nd: YAG laser have been discussed in the literature<sup>[71-74]</sup>. Recently, PDT was described as a palliative or less-invasive salvage treatment option for local failure after chemoradiotherapy (CRT). Retrospective analysis of 130 patients treated with PDT for local failure (T2 lesions without metastases) after CRT was performed<sup>[75]</sup>. The complete response rate, progression-free survival and the overall survival rates at 5 years after salvage PDT were 58.4%, 22.1% and 35.9% respectively. The treatment-related death rate was 1.8%. APC is another ablative therapy used to safely treat lesions that are not endoscopically resectable and to control the recurrence after endoscopic resection or chemoradiotherapy<sup>[76]</sup>. However, the literature supporting this technique is lacking.

## CONCLUSION

Esophageal SCC remains one of the leading causes of cancer death. Improving the detection of early stage lesions remains of utmost importance as these lesions can be cured with endoscopic therapy. With improvements in advanced imaging modalities, we will better be able to detect, assess, and treat lesions at earlier stages. As we await improved endoscopic technologies, endoscopists everywhere must remain vigilant in their endoscopic evaluation of the esophagus during each and every endoscopy performed.

## REFERENCES

- 1 **Kamangar F**, Dores GM, Anderson WF. Patterns of cancer incidence, mortality, and prevalence across five continents: defining priorities to reduce cancer disparities in different geographic regions of the world. *J Clin Oncol* 2006; **24**: 2137-2150 [PMID: 16682732 DOI: 10.1200/jco.2005.05.2308]
- 2 **Wei WQ**, Chen ZF, He YT, Feng H, Hou J, Lin DM, Li XQ, Guo CL, Li SS, Wang GQ, Dong ZW, Abnet CC, Qiao YL. Long-Term Follow-Up of a Community Assignment, One-Time Endoscopic Screening Study of Esophageal Cancer in China. *J Clin Oncol* 2015; **33**: 1951-1957 [PMID: 25940715 DOI: 10.1200/jco.2014.58.0423]
- 3 **Enzinger PC**, Mayer RJ. Esophageal cancer. *N Engl J Med* 2003; **349**: 2241-2252 [PMID: 14657432 DOI: 10.1056/NEJMra035010]
- 4 **Natsugoe S**, Baba M, Yoshinaka H, Kijima F, Shimada M, Shirao K, Kusano C, Fukumoto T, Mueller J, Aikou T. Mucosal squamous cell carcinoma of the esophagus: a clinicopathologic study of 30 cases.

- Oncology* 1998; **55**: 235-241 [PMID: 9560056]
- 5 **Tajima Y**, Nakanishi Y, Tachimori Y, Kato H, Watanabe H, Yamaguchi H, Yoshimura K, Kusano M, Shimoda T. Significance of involvement by squamous cell carcinoma of the ducts of esophageal submucosal glands. Analysis of 201 surgically resected superficial squamous cell carcinomas. *Cancer* 2000; **89**: 248-254 [PMID: 10918152]
  - 6 **Bollschweiler E**, Baldus SE, Schröder W, Prenzel K, Gutschow C, Schneider PM, Hölscher AH. High rate of lymph-node metastasis in submucosal esophageal squamous-cell carcinomas and adenocarcinomas. *Endoscopy* 2006; **38**: 149-156 [PMID: 16479422 DOI: 10.1055/s-2006-924993]
  - 7 **Higuchi K**, Koizumi W, Tanabe S, Sasaki T, Katada C, Azuma M, Nakatani K, Ishido K, Naruke A, Ryu T. Current management of esophageal squamous-cell carcinoma in Japan and other countries. *Gastrointest Cancer Res* 2009; **3**: 153-161 [PMID: 19742141]
  - 8 **Hölscher AH**, Bollschweiler E, Schneider PM, Siewert JR. Early adenocarcinoma in Barrett's oesophagus. *Br J Surg* 1997; **84**: 1470-1473 [PMID: 9361616]
  - 9 **Stein HJ**, Feith M, Mueller J, Werner M, Siewert JR. Limited resection for early adenocarcinoma in Barrett's esophagus. *Ann Surg* 2000; **232**: 733-742 [PMID: 11088068]
  - 10 **Nigro JJ**, DeMeester SR, Hagen JA, DeMeester TR, Peters JH, Kiyabu M, Campos GM, Oberg S, Gastal O, Crookes PF, Bremner CG. Node status in transmural esophageal adenocarcinoma and outcome after en bloc esophagectomy. *J Thorac Cardiovasc Surg* 1999; **117**: 960-968 [PMID: 10220691 DOI: 10.1016/s0022-5223(99)70377-6]
  - 11 **Ferlay J**, Soerjomataram I, Dikshit R, Eser S, Mathers C, Rebelo M, Parkin DM, Forman D, Bray F. Cancer incidence and mortality worldwide: sources, methods and major patterns in GLOBOCAN 2012. *Int J Cancer* 2015; **136**: E359-E386 [PMID: 25220842 DOI: 10.1002/ijc.29210]
  - 12 **Yokoyama A**, Muramatsu T, Ohmori T, Higuchi S, Hayashida M, Ishii H. Esophageal cancer and aldehyde dehydrogenase-2 genotypes in Japanese males. *Cancer Epidemiol Biomarkers Prev* 1996; **5**: 99-102 [PMID: 8850269]
  - 13 **Chung CS**, Lee YC, Wu MS. Prevention strategies for esophageal cancer: Perspectives of the East vs. West. *Best Pract Res Clin Gastroenterol* 2015; **29**: 869-883 [PMID: 26651249 DOI: 10.1016/j.bpg.2015.09.010]
  - 14 **Petrack JL**, Wyss AB, Butler AM, Cummings C, Sun X, Poole C, Smith JS, Olshan AF. Prevalence of human papillomavirus among oesophageal squamous cell carcinoma cases: systematic review and meta-analysis. *Br J Cancer* 2014; **110**: 2369-2377 [PMID: 24619077 DOI: 10.1038/bjc.2014.96]
  - 15 **Hardefeldt HA**, Cox MR, Eslick GD. Association between human papillomavirus (HPV) and oesophageal squamous cell carcinoma: a meta-analysis. *Epidemiol Infect* 2014; **142**: 1119-1137 [PMID: 24721187 DOI: 10.1017/s0950268814000016]
  - 16 **Dubuc J**, Legoux J, Winnock M, Seyrig J, Barbier J, Barrioz T, Laugier R, Boulay G, Grasset D, Sautereau D, Grigoresco D, Butel J, Scoazec J, Ponchon T, Société Française d'Endoscopie Digestive. Endoscopic screening for esophageal squamous-cell carcinoma in high-risk patients: a prospective study conducted in 62 French endoscopy centers. *Endoscopy* 2006; **38**: 690-695 [PMID: 16874909]
  - 17 **Scherübl H**, von Lampe B, Faiss S, Däubler P, Bohlmann P, Plath T, Foss HD, Scherer H, Strunz A, Hoffmeister B, Stein H, Zeitz M, Riecken EO. Screening for oesophageal neoplasia in patients with head and neck cancer. *Br J Cancer* 2002; **86**: 239-243 [PMID: 11870513 DOI: 10.1038/sj.bjc.6600018]
  - 18 **Su YY**, Chen WC, Chuang HC, Guo CS, Lin YT, Luo SD, Fang FM, Chien CY. Effect of routine esophageal screening in patients with head and neck cancer. *JAMA Otolaryngol Head Neck Surg* 2013; **139**: 350-354 [PMID: 23519755 DOI: 10.1001/jamaoto.2013.46]
  - 19 **Lao-Sirieix P**, Fitzgerald RC. Screening for oesophageal cancer. *Nat Rev Clin Oncol* 2012; **9**: 278-287 [PMID: 22430857 DOI: 10.1038/nrclinonc.2012.35]
  - 20 **Katada C**, Yokoyama T, Yano T, Kaneko K, Oda I, Shimizu Y, Doyama H, Koike T, Takizawa K, Hirao M, Okada H, Yoshii T, Konishi K, Yamanouchi T, Tsuda T, Omori T, Kobayashi N, Shimoda T, Ochiai A, Amanuma Y, Ohashi S, Matsuda T, Ishikawa H, Yokoyama A, Muto M. Alcohol Consumption and Multiple Dysplastic Lesions Increase Risk of Squamous Cell Carcinoma in the Esophagus, Head, and Neck. *Gastroenterology* 2016; **151**: 860-869.e7 [PMID: 27492616 DOI: 10.1053/j.gastro.2016.07.040]
  - 21 **Ishihara R**, Kanzaki H, Iishi H, Nagai K, Matsui F, Yamashina T, Matsuura N, Ito T, Fujii M, Yamamoto S, Hanaoka N, Takeuchi Y, Higashino K, Uedo N, Tatsuta M, Tomita Y, Ishiguro S. Pink-color sign in esophageal squamous neoplasia, and speculation regarding the underlying mechanism. *World J Gastroenterol* 2013; **19**: 4300-4308 [PMID: 23885140 DOI: 10.3748/wjg.v19.i27.4300]
  - 22 **Shimizu Y**, Omori T, Yokoyama A, Yoshida T, Hirota J, Ono Y, Yamamoto J, Kato M, Asaka M. Endoscopic diagnosis of early squamous neoplasia of the esophagus with iodine staining: high-grade intra-epithelial neoplasia turns pink within a few minutes. *J Gastroenterol Hepatol* 2008; **23**: 546-550 [PMID: 17573830 DOI: 10.1111/j.1440-1746.2007.04990.x]
  - 23 **Muto M**. Endoscopic diagnostic strategy of superficial esophageal squamous cell carcinoma. *Dig Endosc* 2013; **25** Suppl 1: 1-6 [PMID: 23406378 DOI: 10.1111/den.12025]
  - 24 **Katada C**, Muto M, Tanabe S, Higuchi K, Sasaki T, Azuma M, Ishido K, Katada N, Sakuramoto S, Yamashita K, Masaki T, Nakayama M, Okamoto M, Koizumi W. Factors associated with the presence of multiple Lugol-voiding lesions in patients with esophageal squamous-cell carcinoma. *Dis Esophagus* 2014; **27**: 457-462 [PMID: 23009284 DOI: 10.1111/j.1442-2050.2012.01429.x]
  - 25 **Asada-Hirayama I**, Ono S, Kodashima S, Niimi K, Mochizuki S, Yamamichi N, Fujishiro M, Matsusaka K, Fukayama M, Koike K. Preoperative iodine staining may complicate the demarcation of esophageal carcinoma. *Gut Liver* 2013; **7**: 492-496 [PMID: 23898393 DOI: 10.5009/gnl.2013.7.4.492]
  - 26 **Kondo H**, Fukuda H, Ono H, Gotoda T, Saito D, Takahiro K, Shirao K, Yamaguchi H, Yoshida S. Sodium thiosulfate solution spray for relief of irritation caused by Lugol's stain in chromoendoscopy. *Gastrointest Endosc* 2001; **53**: 199-202 [PMID: 11174292]
  - 27 **Muto M**, Minashi K, Yano T, Saito Y, Oda I, Nonaka S, Omori T, Sugiura H, Goda K, Kaise M, Inoue H, Ishikawa H, Ochiai A, Shimoda T, Watanabe H, Tajiri H, Saito D. Early detection of superficial squamous cell carcinoma in the head and neck region and esophagus by narrow band imaging: a multicenter randomized controlled trial. *J Clin Oncol* 2010; **28**: 1566-1572 [PMID: 20177025 DOI: 10.1200/jco.2009.25.4680]
  - 28 **Nagami Y**, Tominaga K, Machida H, Nakatani M, Kameda N, Sugimori S, Okazaki H, Tanigawa T, Yamagami H, Kubo N, Shiba M, Watanabe K, Watanabe T, Iguchi H, Fujiwara Y, Ohira M, Hirakawa K, Arakawa T. Usefulness of non-magnifying narrow-band imaging in screening of early esophageal squamous cell carcinoma: a prospective comparative study using propensity score matching. *Am J Gastroenterol* 2014; **109**: 845-854 [PMID: 24751580 DOI: 10.1038/ajg.2014.94]
  - 29 **Goda K**, Dobashi A, Yoshimura N, Kato M, Aihara H, Sumiyama K, Toyozumi H, Kato T, Ikegami M, Tajiri H. Narrow-Band Imaging Magnifying Endoscopy versus Lugol Chromoendoscopy with Pink-Color Sign Assessment in the Diagnosis of Superficial Esophageal Squamous Neoplasms: A Randomised Noninferiority Trial. *Gastroenterol Res Pract* 2015; **2015**: 639462 [PMID: 26229530 DOI: 10.1155/2015/639462]
  - 30 **Inoue H**, Rey JF, Lightdale C. Lugol chromoendoscopy for esophageal squamous cell cancer. *Endoscopy* 2001; **33**: 75-79 [PMID: 11204992]
  - 31 **Kuwano H**, Kitamura K, Baba K, Morita M, Matsuda H, Mori M, Sugimachi K. Determination of the resection line in early esophageal cancer using intraoperative endoscopic examination with Lugol staining. *J Surg Oncol* 1992; **50**: 149-152 [PMID: 1377764]
  - 32 **Pimentel-Nunes P**, Dinis-Ribeiro M, Ponchon T, Repici A, Vieth M, De Ceglie A, Amato A, Berr F, Bhandari P, Bialek A, Conio M, Haringsma J, Langner C, Meisner S, Messmann H, Morino M, Neuhaus H, Piessevaux H, Rugge M, Saunders BP, Robaszekiewicz M, Seewald S, Kashin S, Dumonceau JM, Hassan C, Deprez PH. Endoscopic submucosal dissection: European Society of

- Gastrointestinal Endoscopy (ESGE) Guideline. *Endoscopy* 2015; **47**: 829-854 [PMID: 26317585 DOI: 10.1055/s-0034-1392882]
- 33 **Endoscopic Classification Review Group.** Update on the paris classification of superficial neoplastic lesions in the digestive tract. *Endoscopy* 2005; **37**: 570-578 [PMID: 15933932 DOI: 10.1055/s-2005-861352]
  - 34 **Ebi M, Shimura T, Yamada T, Mizushima T, Itoh K, Tsukamoto H, Tsuchida K, Hirata Y, Murakami K, Kanie H, Nomura S, Iwasaki H, Kitagawa M, Takahashi S, Joh T.** Multicenter, prospective trial of white-light imaging alone versus white-light imaging followed by magnifying endoscopy with narrow-band imaging for the real-time imaging and diagnosis of invasion depth in superficial esophageal squamous cell carcinoma. *Gastrointest Endosc* 2015; **81**: 1355-1361. e2 [PMID: 25683023 DOI: 10.1016/j.gie.2014.11.015]
  - 35 **Oyama T, Inoue H, Arima M, Momma K, Omori T, Ishihara R, Hirasawa D, Takeuchi M, Tomori A, Goda K.** Prediction of the invasion depth of superficial squamous cell carcinoma based on microvessel morphology: magnifying endoscopic classification of the Japan Esophageal Society. *Esophagus* 2017; **14**: 105-112 [PMID: 28386209 DOI: 10.1007/s10388-016-0527-7]
  - 36 **Goda K, Tajiri H, Ikegami M, Yoshida Y, Yoshimura N, Kato M, Sumiyama K, Imazu H, Matsuda K, Kaise M, Kato T, Omar S.** Magnifying endoscopy with narrow band imaging for predicting the invasion depth of superficial esophageal squamous cell carcinoma. *Dis Esophagus* 2009; **22**: 453-460 [PMID: 19222533 DOI: 10.1111/j.1442-2050.2009.00942.x]
  - 37 **Thosani N, Singh H, Kapadia A, Ochi N, Lee JH, Ajani J, Swisher SG, Hofstetter WL, Guha S, Bhutani MS.** Diagnostic accuracy of EUS in differentiating mucosal versus submucosal invasion of superficial esophageal cancers: a systematic review and meta-analysis. *Gastrointest Endosc* 2012; **75**: 242-253 [PMID: 22115605 DOI: 10.1016/j.gie.2011.09.016]
  - 38 **Sharma P, Meining AR, Coron E, Lightdale CJ, Wolfsen HC, Bansal A, Bajbouj M, Galmiche JP, Abrams JA, Rastogi A, Gupta N, Michalek JE, Lauwers GY, Wallace MB.** Real-time increased detection of neoplastic tissue in Barrett's esophagus with probe-based confocal laser endomicroscopy: final results of an international multicenter, prospective, randomized, controlled trial. *Gastrointest Endosc* 2011; **74**: 465-472 [PMID: 21741642 DOI: 10.1016/j.gie.2011.04.004]
  - 39 **Liu H, Li YQ, Yu T, Zhao YA, Zhang JP, Zuo XL, Li CQ, Zhang JN, Guo YT, Zhang TG.** Confocal laser endomicroscopy for superficial esophageal squamous cell carcinoma. *Endoscopy* 2009; **41**: 99-106 [PMID: 19214886 DOI: 10.1055/s-0028-1119492]
  - 40 **Guo J, Li CQ, Li M, Zuo XL, Yu T, Liu JW, Liu J, Kou GJ, Li YQ.** Diagnostic value of probe-based confocal laser endomicroscopy and high-definition virtual chromoendoscopy in early esophageal squamous neoplasia. *Gastrointest Endosc* 2015; **81**: 1346-1354 [PMID: 25680899 DOI: 10.1016/j.gie.2014.10.041]
  - 41 **Prueksapanich P, Pittayanon R, Rerknimitr R, Wisedopas N, Kullavanijaya P.** Value of probe-based confocal laser endomicroscopy (pCLE) and dual focus narrow-band imaging (dNBI) in diagnosing early squamous cell neoplasms in esophageal Lugol's voiding lesions. *Endosc Int Open* 2015; **3**: E281-E288 [PMID: 26356321 DOI: 10.1055/s-0034-1391903]
  - 42 **Trindade AJ, Vamadevan AS, Sejjal DV.** Finding a needle in a haystack: use of volumetric laser endomicroscopy in targeting focal dysplasia in long-segment Barrett's esophagus. *Gastrointest Endosc* 2015; **82**: 756; discussion 757 [PMID: 26005011 DOI: 10.1016/j.gie.2015.03.1984]
  - 43 **Trindade AJ, George BJ, Berkowitz J, Sejjal DV, McKinley MJ.** Volumetric laser endomicroscopy can target neoplasia not detected by conventional endoscopic measures in long segment Barrett's esophagus. *Endosc Int Open* 2016; **4**: E318-E322 [PMID: 27004250 DOI: 10.1055/s-0042-101409]
  - 44 **Leggett CL, Gorospe E, Owens VL, Anderson M, Lutzke L, Wang KK.** Volumetric laser endomicroscopy detects subsquamous Barrett's adenocarcinoma. *Am J Gastroenterol* 2014; **109**: 298-299 [PMID: 24496431 DOI: 10.1038/ajg.2013.422]
  - 45 **Hatta W, Uno K, Koike T, Iijima K, Asano N, Imatani A, Shimo-segawa T.** A prospective comparative study of optical coherence tomography and EUS for tumor staging of superficial esophageal squamous cell carcinoma. *Gastrointest Endosc* 2012; **76**: 548-555 [PMID: 22898413 DOI: 10.1016/j.gie.2012.05.012]
  - 46 **Zhang YM, Boerwinkel DF, Qin X, He S, Xue L, Weusten BL, Dawsey SM, Fleischer DE, Dou LZ, Liu Y, Lu N, Bergman JJ, Wang GQ.** A randomized trial comparing multiband mucosectomy and cap-assisted endoscopic resection for endoscopic piecemeal resection of early squamous neoplasia of the esophagus. *Endoscopy* 2016; **48**: 330-338 [PMID: 26545174 DOI: 10.1055/s-0034-1393358]
  - 47 **Oyama T, Tomori A, Hotta K, Morita S, Kominato K, Tanaka M, Miyata Y.** Endoscopic submucosal dissection of early esophageal cancer. *Clin Gastroenterol Hepatol* 2005; **3**: S67-S70 [PMID: 16013002]
  - 48 **Tsujii Y, Nishida T, Nishiyama O, Yamamoto K, Kawai N, Yamaguchi S, Yamada T, Yoshio T, Kitamura S, Nakamura T, Nishihara A, Ogiyama H, Nakahara M, Komori M, Kato M, Hayashi Y, Shinzaki S, Iijima H, Michida T, Tsujii M, Takehara T.** Clinical outcomes of endoscopic submucosal dissection for superficial esophageal neoplasms: a multicenter retrospective cohort study. *Endoscopy* 2015; **47**: 775-783 [PMID: 25826277 DOI: 10.1055/s-0034-1391844]
  - 49 **Kanzaki H, Ishihara R, Ohta T, Nagai K, Matsui F, Yamashina T, Hanafusa M, Yamamoto S, Hanaoka N, Takeuchi Y, Higashino K, Uedo N, Iishi H, Tatsuta M.** Randomized study of two endo-knives for endoscopic submucosal dissection of esophageal cancer. *Am J Gastroenterol* 2013; **108**: 1293-1298 [PMID: 23732465 DOI: 10.1038/ajg.2013.161]
  - 50 **Kawahara Y, Hori K, Takenaka R, Nasu J, Kawano S, Kita M, Tsuzuki T, Matsubara M, Kobayashi S, Okada H, Yamamoto K.** Endoscopic submucosal dissection of esophageal cancer using the Mucosectom2 device: a feasibility study. *Endoscopy* 2013; **45**: 869-875 [PMID: 23884795 DOI: 10.1055/s-0033-1344229]
  - 51 **Fujinami H, Hosokawa A, Ogawa K, Nishikawa J, Kajijura S, Ando T, Ueda A, Yoshita H, Sugiyama T.** Endoscopic submucosal dissection for superficial esophageal neoplasms using the stag beetle knife. *Dis Esophagus* 2014; **27**: 50-54 [PMID: 23442212 DOI: 10.1111/dote.12039]
  - 52 **Yamashina T, Ishihara R, Uedo N, Nagai K, Matsui F, Kawada N, Oota T, Kanzaki H, Hanafusa M, Yamamoto S, Hanaoka N, Takeuchi Y, Higashino K, Iishi H.** Safety and curative ability of endoscopic submucosal dissection for superficial esophageal cancers at least 50 mm in diameter. *Dig Endosc* 2012; **24**: 220-225 [PMID: 22725105 DOI: 10.1111/j.1443-1661.2011.01215.x]
  - 53 **Repici A, Hassan C, Carlino A, Pagano N, Zullo A, Rando G, Strangio G, Romeo F, Nicità R, Rosati R, Malesci A.** Endoscopic submucosal dissection in patients with early esophageal squamous cell carcinoma: results from a prospective Western series. *Gastrointest Endosc* 2010; **71**: 715-721 [PMID: 20363414 DOI: 10.1016/j.gie.2009.11.020]
  - 54 **Chaves DM, Moura EG, Milhomem D, Arantes VN, Yamazaki K, Maluf F, Albuquerque W, Conrado AC, Araújo JC, Uejo PH, Sakai P.** Initial experience of endoscopic submucosal dissection in Brazil to treat early gastric and esophageal cancer: a multi-institutional analysis. *Arg Gastroenterol* 2013; **50**: 148-152 [PMID: 23903626]
  - 55 **Teoh AY, Chiu PW, Yu Ngo DK, Wong SK, Lau JY, Ng EK.** Outcomes of endoscopic submucosal dissection versus endoscopic mucosal resection in management of superficial squamous esophageal neoplasms outside Japan. *J Clin Gastroenterol* 2010; **44**: e190-e194 [PMID: 20844363 DOI: 10.1097/MCG.0b013e3181ce52fb]
  - 56 **Park JS, Youn YH, Park JJ, Kim JH, Park H.** Clinical Outcomes of Endoscopic Submucosal Dissection for Superficial Esophageal Squamous Neoplasms. *Clin Endosc* 2016; **49**: 168-175 [PMID: 26867548 DOI: 10.5946/ce.2015.080]
  - 57 **Chen Y, Zhao Y, Zhao X, Shi R.** Clinical Outcomes of Endoscopic Submucosal Dissection for Early Esophageal Squamous Cell Neoplasms: A Retrospective Single-Center Study in China. *Gastroenterol Res Pract* 2016; **2016**: 3741456 [PMID: 27579034 DOI: 10.1155/2016/3741456]
  - 58 **Probst A, Aust D, Märkl B, Anthuber M, Messmann H.** Early esophageal cancer in Europe: endoscopic treatment by endoscopic submucosal dissection. *Endoscopy* 2015; **47**: 113-121 [PMID: 25479563 DOI: 10.1055/s-0034-1391086]

- 59 **Kuwano H**, Nishimura Y, Oyama T, Kato H, Kitagawa Y, Kusano M, Shimada H, Takiuchi H, Toh Y, Doki Y, Naomoto Y, Matsubara H, Miyazaki T, Muto M, Yanagisawa A. Guidelines for Diagnosis and Treatment of Carcinoma of the Esophagus April 2012 edited by the Japan Esophageal Society. *Esophagus* 2015; **12**: 1-30 [PMID: 25620903 DOI: 10.1007/s10388-014-0465-1]
- 60 **Ishihara R**, Iishi H, Uedo N, Takeuchi Y, Yamamoto S, Yamada T, Masuda E, Higashino K, Kato M, Narahara H, Tatsuta M. Comparison of EMR and endoscopic submucosal dissection for en bloc resection of early esophageal cancers in Japan. *Gastrointest Endosc* 2008; **68**: 1066-1072 [PMID: 18620345 DOI: 10.1016/j.gie.2008.03.1114]
- 61 **Jin XF**, Chai TH, Gai W, Chen ZS, Guo JQ. Multiband Mucosectomy Versus Endoscopic Submucosal Dissection for Treatment of Squamous Intraepithelial Neoplasia of the Esophagus. *Clin Gastroenterol Hepatol* 2016; **14**: 948-955 [PMID: 27108794 DOI: 10.1016/j.cgh.2016.04.018]
- 62 **Ono S**, Fujishiro M, Niimi K, Goto O, Kodashima S, Yamamichi N, Omata M. Long-term outcomes of endoscopic submucosal dissection for superficial esophageal squamous cell neoplasms. *Gastrointest Endosc* 2009; **70**: 860-866 [PMID: 19577748 DOI: 10.1016/j.gie.2009.04.044]
- 63 **Shi Q**, Ju H, Yao LQ, Zhou PH, Xu MD, Chen T, Zhou JM, Chen TY, Zhong YS. Risk factors for postoperative stricture after endoscopic submucosal dissection for superficial esophageal carcinoma. *Endoscopy* 2014; **46**: 640-644 [PMID: 24830402 DOI: 10.1055/s-0034-1365648]
- 64 **Miwata T**, Oka S, Tanaka S, Kagemoto K, Sanomura Y, Urabe Y, Hiyama T, Chayama K. Risk factors for esophageal stenosis after entire circumferential endoscopic submucosal dissection for superficial esophageal squamous cell carcinoma. *Surg Endosc* 2016; **30**: 4049-4056 [PMID: 26703127 DOI: 10.1007/s00464-015-4719-3]
- 65 **Moriya H**, Ohbu M, Kobayashi N, Tanabe S, Katada N, Futawatari N, Sakuramoto S, Kikuchi S, Okayasu I, Watanabe M. Lymphatic tumor emboli detected by D2-40 immunostaining can more accurately predict lymph-node metastasis. *World J Surg* 2011; **35**: 2031-2037 [PMID: 21667194 DOI: 10.1007/s00268-011-1143-2]
- 66 **Yamashina T**, Ishihara R, Nagai K, Matsuura N, Matsui F, Ito T, Fujii M, Yamamoto S, Hanaoka N, Takeuchi Y, Higashino K, Uedo N, Iishi H. Long-term outcome and metastatic risk after endoscopic resection of superficial esophageal squamous cell carcinoma. *Am J Gastroenterol* 2013; **108**: 544-551 [PMID: 23399555 DOI: 10.1038/ajg.2013.8]
- 67 **Shaheen NJ**, Sharma P, Overholt BF, Wolfsen HC, Sampliner RE, Wang KK, Galanko JA, Bronner MP, Goldblum JR, Bennett AE, Jobe BA, Eisen GM, Fennerty MB, Hunter JG, Fleischer DE, Sharma VK, Hawes RH, Hoffman BJ, Rothstein RI, Gordon SR, Mashimo H, Chang KJ, Muthusamy VR, Edmundowicz SA, Spechler SJ, Siddiqui AA, Souza RF, Infantolino A, Falk GW, Kimmey MB, Madanick RD, Chak A, Lightdale CJ. Radiofrequency ablation in Barrett's esophagus with dysplasia. *N Engl J Med* 2009; **360**: 2277-2288 [PMID: 19474425 DOI: 10.1056/NEJMoa0808145]
- 68 **Wang WL**, Chang IW, Chen CC, Chang CY, Mo LR, Lin JT, Wang HP, Lee CT. A case series on the use of circumferential radiofrequency ablation for early esophageal squamous neoplasias in patients with esophageal varices. *Gastrointest Endosc* 2017; **85**: 322-329 [PMID: 27365263 DOI: 10.1016/j.gie.2016.06.045]
- 69 **Wang WL**, Chang IW, Chen CC, Chang CY, Mo LR, Lin JT, Wang HP, Lee CT. Radiofrequency Ablation Versus Endoscopic Submucosal Dissection in Treating Large Early Esophageal Squamous Cell Neoplasia. *Medicine (Baltimore)* 2015; **94**: e2240 [PMID: 26656367 DOI: 10.1097/md.0000000000002240]
- 70 **He S**, Bergman J, Zhang Y, Weusten B, Xue L, Qin X, Dou L, Liu Y, Fleischer D, Lu N, Dawsey SM, Wang GQ. Endoscopic radiofrequency ablation for early esophageal squamous cell neoplasia: report of safety and effectiveness from a large prospective trial. *Endoscopy* 2015; **47**: 398-408 [PMID: 25668428 DOI: 10.1055/s-0034-1391285]
- 71 **Okunaka T**, Kato H, Conaka C, Yamamoto H, Bonaminio A, Eckhauser ML. Photodynamic therapy of esophageal carcinoma. *Surg Endosc* 1990; **4**: 150-153 [PMID: 2267647]
- 72 **Tajiri H**, Oguro Y. Laser endoscopic treatment for upper gastrointestinal cancers. *J Laparoendosc Surg* 1991; **1**: 71-78 [PMID: 1718511]
- 73 **Savary JF**, Grosjean P, Monnier P, Fontollet C, Wagnieres G, Braichotte D, van den Bergh H. Photodynamic therapy of early squamous cell carcinomas of the esophagus: a review of 31 cases. *Endoscopy* 1998; **30**: 258-265 [PMID: 9615874 DOI: 10.1055/s-2007-1001252]
- 74 **Tanaka T**, Matono S, Nagano T, Murata K, Sueyoshi S, Yamana H, Shirouzu K, Fujita H. Photodynamic therapy for large superficial squamous cell carcinoma of the esophagus. *Gastrointest Endosc* 2011; **73**: 1-6 [PMID: 21074765 DOI: 10.1016/j.gie.2010.08.049]
- 75 **Hatogai K**, Yano T, Kojima T, Onozawa M, Daiko H, Nomura S, Yoda Y, Doi T, Kaneko K, Ohtsu A. Salvage photodynamic therapy for local failure after chemoradiotherapy for esophageal squamous cell carcinoma. *Gastrointest Endosc* 2016; **83**: 1130-1139.e3 [PMID: 26608125 DOI: 10.1016/j.gie.2015.11.016]
- 76 **Tahara K**, Tanabe S, Ishido K, Higuchi K, Sasaki T, Katada C, Azuma M, Nakatani K, Naruke A, Kim M, Koizumi W. Argon plasma coagulation for superficial esophageal squamous-cell carcinoma in high-risk patients. *World J Gastroenterol* 2012; **18**: 5412-5417 [PMID: 23082058 DOI: 10.3748/wjg.v18.i38.5412]

**P- Reviewer:** Goda K, Uno K    **S- Editor:** Gong ZM    **L- Editor:** A  
**E- Editor:** Lu YJ





Published by **Baishideng Publishing Group Inc**  
7901 Stoneridge Drive, Suite 501, Pleasanton, CA 94588, USA  
Telephone: +1-925-223-8242  
Fax: +1-925-223-8243  
E-mail: [bpgoffice@wjgnet.com](mailto:bpgoffice@wjgnet.com)  
Help Desk: <http://www.f6publishing.com/helpdesk>  
<http://www.wjgnet.com>

