

World Journal of *Gastrointestinal Oncology*

World J Gastrointest Oncol 2020 July 15; 12(7): 705-790



REVIEW

- 705 Pancreatic neuroendocrine tumors G3 and pancreatic neuroendocrine carcinomas: Differences in basic biology and treatment
Zhang MY, He D, Zhang S

ORIGINAL ARTICLE**Basic Study**

- 719 Clinical significance of SQSTM1/P62 and nuclear factor- κ B expression in pancreatic carcinoma
Zhang ZY, Guo S, Zhao R, Ji ZP, Zhuang ZN

Retrospective Cohort Study

- 732 Prognostic role of ultrasonography staging in patients with anal cancer
De Nardi P, Arru GG, Guarneri G, Vlasakov I, Massimino L
- 741 Maspin subcellular expression in wild-type and mutant TP53 gastric cancers
Gurzu S, Jung I, Sugimura H, Stefan-van Staden RI, Yamada H, Natsume H, Iwashita Y, Szodorai R, Szederjesi J

Retrospective Study

- 756 Comparison of open and closed hyperthermic intraperitoneal chemotherapy: Results from the United States hyperthermic intraperitoneal chemotherapy collaborative
Leiting JL, Cloyd JM, Ahmed A, Fournier K, Lee AJ, Dessureault S, Felder S, Veerapong J, Baumgartner JM, Clarke C, Mogal H, Staley CA, Zaidi MY, Patel SH, Ahmad SA, Hendrix RJ, Lambert L, Abbott DE, Pokrzywa C, Raoof M, LaRocca CJ, Johnston FM, Greer J, Grotz TE

Clinical Trials Study

- 768 Endoscopic ultrasound-guided fiducial marker placement for neoadjuvant chemoradiation therapy for resectable pancreatic cancer
Ashida R, Fukutake N, Takada R, Ioka T, Ohkawa K, Katayama K, Akita H, Takahashi H, Ohira S, Teshima T

Prospective Study

- 782 Role of prophylactic hyperthermic intraperitoneal chemotherapy in patients with locally advanced gastric cancer
Xie TY, Wu D, Li S, Qiu ZY, Song QY, Guan D, Wang LP, Li XG, Duan F, Wang XX

ABOUT COVER

Editorial Board Member of *World Journal of Gastrointestinal Oncology*, Dr. Azer is a Distinguished Professor at King Saud University College of Medicine Saudi Arabia. Dr. Azer obtained a Master in Medicine, a PhD from the University of Sydney; a Master in Education and a Master in Public Health in 2005 from the University of New South Wales. He is a Fellow of the American College of Gastroenterology since 1998. He was a Senior Lecturer at the University of Sydney and the University of Melbourne. He is a visiting Professor at the University of Toyama and was a Professor of Medical Education at Universiti Teknologi MARA. He is a leader in medical education and has been honoured to lead changes in medical curricula at the University of Sydney, the University of Melbourne, the University of Toyama, Universiti Teknologi MARA, and King Saud University.

AIMS AND SCOPE

The primary aim of *World Journal of Gastrointestinal Oncology* (WJGO, *World J Gastrointest Oncol*) is to provide scholars and readers from various fields of gastrointestinal oncology with a platform to publish high-quality basic and clinical research articles and communicate their research findings online.

WJGO mainly publishes articles reporting research results and findings obtained in the field of gastrointestinal oncology and covering a wide range of topics including liver cell adenoma, gastric neoplasms, appendiceal neoplasms, biliary tract neoplasms, hepatocellular carcinoma, pancreatic carcinoma, cecal neoplasms, colonic neoplasms, colorectal neoplasms, duodenal neoplasms, esophageal neoplasms, gallbladder neoplasms, etc.

INDEXING/ABSTRACTING

The WJGO is now indexed in Science Citation Index Expanded (also known as SciSearch®), PubMed, and PubMed Central. The 2020 edition of Journal Citation Reports® cites the 2019 impact factor (IF) for WJGO as 2.898; IF without journal self cites: 2.880; 5-year IF: 3.316; Ranking: 143 among 244 journals in oncology; Quartile category: Q3; Ranking: 55 among 88 journals in gastroenterology and hepatology; and Quartile category: Q3.

RESPONSIBLE EDITORS FOR THIS ISSUE

Electronic Editor: Mei-Yi Lin, Production Department Director: Xiang Li, Editorial Office Director: Jin-Lai Wang.

NAME OF JOURNAL

World Journal of Gastrointestinal Oncology

ISSN

ISSN 1948-5204 (online)

LAUNCH DATE

February 15, 2009

FREQUENCY

Monthly

EDITORS-IN-CHIEF

Rosa M Jimenez Rodriguez, Pashtoon Kasi, Monjur Ahmed

EDITORIAL BOARD MEMBERS

<https://www.wjgnet.com/1948-5204/editorialboard.htm>

PUBLICATION DATE

July 15, 2020

COPYRIGHT

© 2020 Baishideng Publishing Group Inc

INSTRUCTIONS TO AUTHORS

<https://www.wjgnet.com/bpg/gerinfo/204>

GUIDELINES FOR ETHICS DOCUMENTS

<https://www.wjgnet.com/bpg/GerInfo/287>

GUIDELINES FOR NON-NATIVE SPEAKERS OF ENGLISH

<https://www.wjgnet.com/bpg/gerinfo/240>

PUBLICATION ETHICS

<https://www.wjgnet.com/bpg/GerInfo/288>

PUBLICATION MISCONDUCT

<https://www.wjgnet.com/bpg/gerinfo/208>

ARTICLE PROCESSING CHARGE

<https://www.wjgnet.com/bpg/gerinfo/242>

STEPS FOR SUBMITTING MANUSCRIPTS

<https://www.wjgnet.com/bpg/GerInfo/239>

ONLINE SUBMISSION

<https://www.f6publishing.com>



Retrospective Cohort Study

Maspin subcellular expression in wild-type and mutant *TP53* gastric cancers

Simona Gurzu, Ioan Jung, Haruhiko Sugimura, Raluca Ioana Stefan-van Staden, Hidetaka Yamada, Hiroko Natsume, Yuji Iwashita, Rita Szodorai, Janos Szederjesi

ORCID number: Simona Gurzu 0000-0003-3968-5118; Ioan Jung 0000-0001-6537-2807; Haruhiko Sugimura 0000-0002-0779-3088; Raluca Ioana Stefan-van Staden 0000-0001-8244-2483; Hidetaka Yamada 0000-0001-5522-5264; Hiroko Natsume 0000-0001-6895-4204; Yuji Iwashita 0000-0002-9085-5429; Rita Szodorai 0000-0001-8922-7823; Janos Szederjesi 0000-0001-9359-6058.

Author contributions: Gurzu S drafted the article and contributed to the histopathological diagnosis; Jung I contributed to the diagnosis and immunohistochemical assessment; Stefan-van Staden RI conferred the funding approval and supervised the scientific grant development; Sugimura H and Yamada H performed determinations of the p53 gene expression; Natsume H and Iwashita Y contributed to molecular examination; Szodorai R contributed to selection of patients and follow-up; Szederjesi J designed the statistical assessment and conferred the final agreement for publication. Gurzu S and Jung I contributed equally to the paper.

Supported by the Romanian National Authority for Scientific Research, No. 20 PCCF/2018.

Institutional review board

Simona Gurzu, Ioan Jung, Rita Szodorai, Department of Pathology, George Emil Palade University of Medicine, Pharmacy, Sciences and Technology, Targu Mures 540139, Mures, Romania

Simona Gurzu, Research Center, George Emil Palade University of Medicine, Pharmacy, Sciences and Technology, Targu Mures 540139, Mures, Romania

Haruhiko Sugimura, Hidetaka Yamada, Hiroko Natsume, Yuji Iwashita, Department of Tumor Pathology, Hamamatsu University School of Medicine, Hamamatsu 431-3192, Japan

Raluca Ioana Stefan-van Staden, National Institute of Research for Electrochemistry and Condensed Matter, Bucharest 060021, Romania

Janos Szederjesi, Intensive Care Unit, George Emil Palade University of Medicine, Pharmacy, Sciences and Technology, Targu Mures 540139, Mures, Romania

Corresponding author: Simona Gurzu, MD, PhD, Chief Doctor, Director, Full Professor, Research Fellow, Research Scientist, Department of Pathology, University of Medicine, Pharmacy, Sciences and Technology, 38 Gheorghe Marinescu Street, Targu Mures 530193, Mures, Romania. simonagurzu@yahoo.com

Abstract

BACKGROUND

Although the role of p53 in the evolution and prognosis of gastric cancer (GC) has been extensively examined, the exact mechanism of action is incompletely understood. In the last years, p53-target genes were supposed to be involved in the p53 pathway. One of them is the tumor-suppressor gene Maspin, which codifies the protein with the same name. Maspin activity depends on its subcellular localization. To our knowledge, the possible role of *TP53* gene in Maspin subcellular localization, in GC cells, has not yet been studied in a large number of human samples.

AIM

To evaluate the possible role of wild-type and mutated p53 in Maspin subcellular localization.

statement: The Ethical Approval of Mureş County Emergency Hospital was obtained to perform the present study.

Informed consent statement: This is a retrospective study. No signed consent was necessary.

Conflict-of-interest statement: All the Authors have no conflict of interest related to the manuscript.

Data sharing statement: No additional data are available.

STROBE statement: The authors have read the STROBE Statement—checklist of items, and the manuscript was prepared and revised according to the STROBE Statement—checklist of items.

Open-Access: This article is an open-access article that was selected by an in-house editor and fully peer-reviewed by external reviewers. It is distributed in accordance with the Creative Commons Attribution NonCommercial (CC BY-NC 4.0) license, which permits others to distribute, remix, adapt, build upon this work non-commercially, and license their derivative works on different terms, provided the original work is properly cited and the use is non-commercial. See: <http://creativecommons.org/licenses/by-nc/4.0/>

Manuscript source: Invited manuscript

Received: February 4, 2020

Peer-review started: February 4, 2020

First decision: March 24, 2020

Revised: April 6, 2020

Accepted: May 27, 2020

Article in press: May 27, 2020

Published online: July 15, 2020

P-Reviewer: Koseoglu RD, Tanabe S

S-Editor: Wang J

L-Editor: Webster JR

E-Editor: Liu MY



METHODS

The present study included 266 consecutive patients with GC in which *TP53* gene status, and mutations in exons 2 to 11, respectively, were analyzed and correlated with immunohistochemical expression of p53 and Maspin.

RESULTS

None of the 266 cases showed mutations in exon 9. The rate of *TP53* mutations was 33.83%. The mutation rate was slightly higher in distally-located GCs, with a lower degree (≤ 5 buds/ high power fields) of dyscohesivity ($P < 0.01$). The wild-type cases had a longer survival, compared with mutant GCs, especially in patients without lymph node metastases, despite the high depth of tumor infiltration ($P = 0.01$). The Dukes-MAC-like staging system was proved to have the most significant independent prognostic value ($P < 0.01$). The statistical correlations proved that *TP53* gene mutations in exon 7 might induce knockdown of Maspin, but wild-type p53 can partially restore nuclear Maspin expression and decrease the metastatic potential of gastric adenocarcinoma cells.

CONCLUSION

Downregulated Maspin might be induced by mutations in exon 7 of the *TP53* gene but wild-type p53 can partially restore nuclear Maspin expression. These findings should be proved in experimental studies.

Key words: p53; *TP53* gene; Maspin; Gastric cancer; Carcinoma

©The Author(s) 2020. Published by Baishideng Publishing Group Inc. All rights reserved.

Core tip: In this paper we tried to emphasize the possible prognostic role of *TP53* status in gastric cancer, and its relation with Maspin protease. For the first time, we have proved that *TP53* gene mutations in exon 7 might induce knockdown of Maspin, but wild-type p53 can partially restore nuclear Maspin expression and decrease the metastatic potential of gastric adenocarcinoma cells.

Citation: Gurzu S, Jung I, Sugimura H, Stefan-van Staden RI, Yamada H, Natsume H, Iwashita Y, Szodorai R, Szederjesi J. Maspin subcellular expression in wild-type and mutant *TP53* gastric cancers. *World J Gastrointest Oncol* 2020; 12(7): 741-755

URL: <https://www.wjgnet.com/1948-5204/full/v12/i7/741.htm>

DOI: <https://dx.doi.org/10.4251/wjgo.v12.i7.741>

INTRODUCTION

In many cancers, including gastric carcinomas (GC), *TP53* is known to be frequently mutated^[1,2]. Despite this well-known fact, the prognostic role of *TP53* is still controversial. Moreover, its interaction with other biomarkers is constantly assessed but the results are controversial.

It is known that *TP53* plays roles in genomic stability^[1] but the mechanism of interaction with other p53-target genes such Maspin is unclear^[2,3]. Maspin (Serpine B5) is a serine protease that is known to be involved in tumor cell proliferation and has antiangiogenic and anti-apoptotic properties against tumor cells^[2-4]. Its regulatory functions depend on the subcellular localization (nucleus *vs* cytoplasm)^[3,5]. In this study, we examined the p53 and Maspin immunohistochemical (IHC) expression, correlated with the mutation rate of *TP53* gene, in GC samples. The independent prognostic role of these markers was also determined.

MATERIALS AND METHODS

Patients and tissues samples

The present study included 266 GC cases, which were retrospectively enrolled from the Clinical County Emergency Hospital of Targu-Mures, Romania. The Ethical

Committee of the Clinical County Emergency Hospital, Targu-Mures, Romania, approved retrospective evaluation of the cases. In these patients, surgical intervention was performed between 2006 and 2016, and consisted of partial or total curative gastrectomy, with lymph node dissection. No cases with stump carcinoma, associated peptic ulcer or patients receiving preoperative chemo- or radiotherapy were included.

Clinicopathological assessment

In these 266 patients, age and gender were correlated with tumor characteristics such localization, stage, macroscopic type, microscopic type, histologic grade of differentiation, and the presence/absence of associated intestinal metaplasia. For macroscopic classification, we used Borrmann's system and criteria proposed by the Japan Gastroenterological Endoscopy Society as follows: Type I-polypoid; type II-ulcerated; type III-ulcero-infiltrative; and type IV-diffusely infiltrative.

Histological diagnosis

All of the examined samples were surgical specimens. We did not include biopsy samples. The histopathological characteristics were determined in carcinoma samples classified based on the combined Lauren and World Health Organization tumor classifications^[6]. The following two main histologic subtypes were included^[6]: Intestinal type GCs [well-differentiated (G1)/moderately differentiated (G2)/poorly (G3) differentiated GCs/papillary carcinoma] and diffuse GC (non-mucinous poorly cohesive, signet ring cell carcinoma and microglandular GCs, defined as diffuse proliferation of small tubular structures).

Based on the rules used for colorectal carcinomas^[5,7], which were adapted for GC^[8], we also assessed the grade of dyscohesivity (tumor budding degree). In terms of the invasion front, we took into account at least 5 high power fields (HPF), and then classified the cases into five groups: 0-nodular growth intestinal type GCs (adenocarcinoma without buds); 1-adenocarcinoma with 1-4 dyscohesive cells in the invasion front (low grade); 2-adenocarcinoma with 5-9 dyscohesive cells in the invasion front (high grade); 3-adenocarcinoma with over 10 dyscohesive cells in the invasion front (high grade); and 4 - diffuse growth-GCs.

Tumor staging

Although the cases were diagnosed from 2003-2016, they were re-staged, based on the two currently used systems. The first system was the 8th edition of the WHO/AJCC staging system^[7]. The cases were classified based on invasion of the mucosa (pT1a), submucosa (pT1b), muscularis (pT2), serosa (pT3) and crossing serosa (pT4). At the same time, pN staging took into account the absence of lymph node metastases (pN0) and the number of involved lymph nodes (pN1-3)^[7].

The second system used for tumor staging was proposed by our team in 2017 and is called the Dukes-MAC-like staging system^[9]. This system consists of the classification of GCs, based on the depth of invasion (T) and lymph node status (N), in eight groups, as follows: 1-T1N0; 2-T1N1-3; 3-T2N0; 4-T2N1-3; 5-T3N0; 6-T3N1-3; 7-T4N0; 8-T4N1-3^[9].

Immunohistochemical staining

The IHC staining was performed on paraffin-embedded tissues. After deparaffinization, the tissues were processed with the Novolink Polymer Detection System (Novocastra, Newcastle Upon Tyne, United Kingdom) according to the manufacturer's instructions. We used the antibodies Maspin (clone EAW24, Novocastra, Newcastle-upon-Tyne, United Kingdom) and p53 (clone DO-7, LabVision, Fremont, CA, United States). Development was carried with DAB (diaminobenzidine) solution (Novocastra). For the negative controls, incubation was performed with the omission of specific antibodies.

Interpretation of the immunohistochemical reactions

Two pathologists (Gurzu S, Jung I), using criteria described previously in the literature, performed the IHC assessments. For p53, three groups were considered, based on the intensity and extent of stained tumor cell nuclei: Negative (< 5%), low (5%-50%) and high p53 expression (> 50%). For Maspin, we used a system of quantification, which was previously published by our team and is based on the subcellular localization of this protease, and cases were classified as negative, with cytoplasm positivity, nuclear predominance and mixed expression (dual positivity, in cytoplasm and nuclei)^[3,4,5,10].

Molecular analysis

The DNA extracted from paraffin blocks was used for genetic examination which was performed at the Department of Tumor Pathology of Hamamatsu University School of Medicine, Japan. DNA isolation was carried out using the Qiagen kit and the manufacturer's protocol. TP53 gene sequencing was performed with direct sequencing using polymerase chain reaction (PCR) product amplified by the primer sets for each exon. Fragments covering exon 2 to 11 and boundary regions of the p53 gene were amplified by PCR with HotStarTaq DNA polymerase (Qiagen, Valencia, CA, United States). The PCR products were purified with Exo-SAP-IT (Thermo Fisher Scientific) and directly sequenced with a BigDye Terminator Cycle Sequencing Reaction Kit and the ABI 3130xL Genetic Analyzer (Thermo Fisher Scientific).

Statistical analysis

Statistical analysis was performed using GraphPad Prism 8 software. For descriptive statistics, the median value \pm standard deviation was used. The χ^2 test, ANOVA, Fisher's exact test and Spearman's test were used to check the correlations. The median follow-up period was 36 mo (range: 2–61 mo). Patients who died in the first month after surgery were not included in the analysis. Univariate survival rate was evaluated using Kaplan-Meier survival curves. $P < 0.05$ (with a 95% confidence interval) was considered statistically significant.

RESULTS

Clinicopathological factors

In the present study, which included 266 patients with GC, we noted a predominance of males *vs* females (M:F = 1.9:1). GC was diagnosed at the median age of 62.52 ± 14.34 years (range 22 to 98 years), in both males and females. Up to 55% of cases had ulcero-infiltrative adenocarcinomas of the proximal and middle third stomach, which did not develop on the background of intestinal metaplasia. Although in both young and elderly patients, a similar distribution between the proximal and distal stomach was observed, Spearman's correlation showed that the predominance of involvement in the distal stomach was slightly increased in patients diagnosed aged over 60 years ($P < 0.05$). In elderly patients, 109/266 GC cases (40.98%) developed on the background of intestinal metaplasia, whereas only 47/266 (17.67%) of GCs in patients ≤ 60 years presented with associated metaplasia ($P < 0.01$). In line with these results, metaplasia-related intestinal type carcinomas were more frequent in elderly, compared with younger patients ($P < 0.01$).

Examination of the budding degree showed that over half of cases (62.03%) had high-grade dyscohesivity or infiltrative growth. Nodular growth was found in only 12.78% of cases (Table 1). Only 37 of 266 cases (13.91%) were identified in the early stages (pT1+2). Over 80% of cases had metastases in at least one lymph node, independent of the depth of tumor infiltration (Table 1).

Correlation of clinicopathological factors with p53 protein expression and TP53 gene status

Of the 266 examined cases, 40 proved to have no p53 expression. Of the remaining 226 p53-positive cases, 157 showed nuclear expression in over 50% of the tumor cells (Table 2), without correlations with the examined clinicopathological factors (Table 3). The TP53 gene showed mutations in 90/266 (33.83%) cases, the other 176 cases (66.17%) were wild-type (wt) cases (Table 2). Independent of the mutated exon and other parameters, statistical analysis showed a slight predominance of p53 wt cases with tumors of the distal stomach which also showed a high degree (> 5 buds/HPF) of dyscohesivity (Table 3).

Correlation of clinicopathological factors with Maspin protein expression

Subcellular expression of Maspin positivity was determined in both the tumor core and invasion front. In the tumor core, it was observed that most of the cases demonstrated mixed expression (nuclear + cytoplasm) of Maspin, followed by the cytoplasm and negative cases. With regard to the invasion front, Maspin subcellular expression was significantly modified, compared with the tumor core ($P < 0.01$) (Table 1). It was noted that nuclear expression was completely retained (in the cases with nuclear Maspin in the core) and all of the cases with cytoplasm staining in the tumor core, gained nuclear expression in the tumor front. Some of the mixed cases lost

Table 1 Clinicopathological characteristics of gastric cancer patients

Clinicopathological parameter		Number (n = 266), n (%)
Age (yr)	≤ 60	96 (36.09)
	> 60	170 (63.91)
Gender	Male	175 (65.78)
	Female	91 (34.22)
Localization	Proximal stomach	108 (40.60)
	Middle third	47 (17.67)
	Distal third and antrum	95 (35.71)
	Diffuse localization	16 (6.02)
Macroscopic aspect (Bormann's type)	Polypoid	21 (7.89)
	Ulcerated	62 (23.31)
	Ultero-infiltrative	151 (56.77)
	Diffusely infiltrative	32 (12.03)
Microscopic aspect	Adenocarcinoma G1+2	75 (28.20)
	Adenocarcinoma G3	76 (28.57)
	Papillary carcinoma	10 (3.76)
	Non-mucinous poorly cohesive	53 (19.92)
	Signet ring cell carcinoma	25 (9.40)
	Diffuse micro-glandular	27 (10.15)
Budding degree (Dyscohesivity rate)	Nodular growth	34 (12.78)
	1-4 buds/HPF	17 (6.39)
	5-9 buds/HPF	50 (18.80)
	≥ 10 buds/HPF	60 (22.56)
	Diffuse growth	105 (39.47)
Associated intestinal metaplasia	Yes	87 (32.71)
	No	179 (67.29)
pT stage	pT1	22 (8.27)
	pT2	15 (5.64)
	pT3	66 (24.81)
	pT4	163 (61.28)
pN stage	pN0	53 (19.92)
	pN1	45 (16.92)
	pN2	51 (19.17)
	pN3	117 (43.99)
Dukes-MAC-like stage	T1N0	10 (3.76)
	T1N1-3	12 (4.51)
	T2N0	7 (2.63)
	T2N1-3	8 (3)
	T3N0	13 (4.89)
	T3N1-3	53 (19.93)
	T4N0	23 (8.65)
	T4N1-3	140 (52.63)

G1: Well differentiated, G2: Moderately differentiated, G3: Poorly differentiated; pT: Depth of tumor infiltration; pN: Lymph node status.

Table 2 Expression of immunohistochemical markers and frequency of *TP53* gene mutations

Parameter		Number (n = 266), n (%)
Maspin expression in tumor core	Negative	39 (14.66)
	Cytoplasm	125 (46.99)
	Mixed (nucleus+cytoplasm)	85 (31.96)
	Nuclear	17 (6.39)
Maspin expression in the invasion front	Negative	21 (7.90)
	Cytoplasm	0 (0)
	Mixed (nucleus+cytoplasm)	201 (75.56)
	Nuclear	44 (16.54)
p53 – nuclear expression	Negative	40 (15.04)
	5%-50%	69 (25.94)
	> 50%	157 (59.02)
<i>TP53</i> gene status	Wild-type	176 (66.17)
	Mutations	90 (33.83)

cytoplasm staining and other negative cases, in the core, showed nuclear positivity in the invasion zone.

The statistical correlations showed a predominance of cases with nuclear positivity in the tumor core in younger patients with poorly cohesive carcinomas, whereas Maspin cytoplasmic expression was most frequently seen in patients over 60 years with intestinal-type adenocarcinomas with nodular growth or low grade dyscohesivity (≤ 5 buds/HPF). All of the “linitis plastica” cases showed pure nuclear Maspin in the invasion front (Table 4).

Correlation of immunohistochemical markers Maspin and p53 with *TP53* gene status

The most interesting correlation was Maspin subcellular expression in the invasion front. On the one hand, all 21 Maspin negative cases in both the core and front (Table 1) showed mutations in exon 7 of the *TP53* gene (C>T and G>A); all of them had high-grade budding (2,3) adenocarcinomas, without associated intestinal metaplasia, which expressed p53 in over 50% of tumor cells and were diagnosed in stages T3,4N1-3. On the other hand, all of the 44 cases with nuclear Maspin in the invasion area were wt *TP53*. At the same time, 18/39 Maspin negative cases, in the tumor core, which gained nuclear positivity in the invasion area, did not have *TP53* gene mutations (Table 5, Figure 1). All of the cases ($n = 44$) with pure nuclear Maspin in the invasion area (Figures 1 and 2) were wt *TP53*.

No statistical correlations were found between p53 immunostaining (nuclear or cytoplasm) and *TP53* gene status (Table 5). From the 40 cases with p53 negativity, 11 (27.50%) showed mutations in exon 3 to exon 8; in two cases double mutations were seen in exon 3 + 4 and 5 + 6, respectively. At the same time, 21 of the 69 cases with low p53 positivity (30.43%) had mutations in exons 2, 5, 6, 7, 8, 10, and 11; in one case both exons 5 and 6 were involved. Finally, 15 of 157 cases with p53 positivity in over 50% of tumor cells (36.31%) in exons 3, 4, 5, 6, 7, 8, 10, and 11; double or triple mutations were seen in five of the cases involving exons 3 + 4, 4 + 5, 4 + 8, 5 + 6, and 6 + 7 + 8 (Table 3). No mutations in exon 9 were identified.

Overall survival

In univariate survival analysis, any of the following clinicopathological parameters, proved to have independent prognostic value ($P > 0.05$): Tumor localization, macroscopic- or microscopic aspect, associated metaplasia, lymph node status, and budding degree. A slightly longer survival was seen in males younger than 60 years (Figures 3 and 4).

Table 3 Correlation between clinicopathological factors and p53 expression

Clinicopathological parameter		Number (n = 266)	^a P53 nuclear expression (n = 266)			^a P value	^b TP53 gene status (n = 266)		^b P value
			negative (n = 40)	10%-50% (n = 69)	> 50% (n = 157)		Wild type (n = 176)	Mutated (n = 90)	
Age (yr)	≤ 60	96	15	28	53	> 0.05	70	26	> 0.05
	> 60	170	25	41	104		106	64	
Localization	Proximal/middle	155	22	34	99	> 0.05	95	60	0.05
	Distal and antrum	95	15	33	47		72	23	
	Diffuse localization	16	3	3	10		9	7	
Microscopy	G1+2	75	9	20	46	> 0.05	43	32	> 0.05
	G3	76	14	23	39		51	25	
	Papillary	10	1	2	7		5	5	
	Poorly cohesive	53	5	14	34		35	18	
	Signet ring cell	25	8	2	15		19	6	
	Micro-glandular	27	3	8	16		23	4	
Budding degree (Dyscohesivity)	Nodular	34	4	8	22	> 0.05	17	17	0.05
	≤ 5 buds/HPF	17	2	7	8		9	8	
	5-9 buds/HPF	50	5	19	26		30	20	
	≥ 10 buds/HPF	60	11	13	36		42	18	
	Diffuse	105	18	22	65		78	27	
pT stage	pT1,2	37	6	7	24	> 0.05	24	13	> 0.05
	pT3,4	229	34	62	133		152	77	
pN stage	pN0	53	11	13	29	> 0.05	32	21	> 0.05
	pN1-3	213	29	56	128		144	69	
Dukes-MAC-like stage	1 + 3 - T1,2N0	17	2	3	12	> 0.05	12	5	> 0.05
	2 + 4 - T1,2N1-3	20	3	3	14		11	9	
	5 + 7 - T3,4N0	36	7	10	19		20	16	
	6 + 8 - T3,4N1-3	193	28	53	112		133	60	

G1: Well differentiated, G2: Moderately differentiated, G3: Poorly differentiated; pT: Depth of tumor infiltration; pN: Lymph node status.

The most significant independent prognostic parameters proved to be tumor depth of infiltration–pT stage ($P < 0.01$) and Dukes-MAC-like stage ($P < 0.01$) (Figure 5). A longer survival was found in pT1 cases, with/without lymph node metastases (TN1 or TN2 Dukes-MAC-like stage); 59.09% of the patients diagnosed in stages TN1+TN2 (13/22) survived for over 60 mo after surgery. In contrast, in pT2 cases, even in the absence of lymph node metastases (TN3 stage), all of these seven patients died at a median period of 34.57 ± 7.32 mo after surgical intervention (Figure 5). No prognostic value was found for IHC expression of Maspin in the tumor core or invasion front, even for p53 expression ($P > 0.05$) (Figure 6).

As *TP53* gene status was found to have independent prognostic value but was not statistically significant ($P < 0.05$), we adjusted it for pTNM and Dukes-MAC like stage (Figures 6 and 7). Regarding the depth of infiltration, in locally advanced stages (pT3-4), wt cases showed a significant longer survival than those with *TP53* gene mutations ($P = 0.01$); the difference was not significant in the group of patients diagnosed in the early stages, respectively, pT1-2 ($P > 0.05$). Within the group of patients without lymph node metastases (pN0 and Dukes-Mac like stage 1 + 3 + 5 + 7), longer survival was also seen in wt cases, compared with those with *TP53* gene mutations ($P = 0.01$). This was not observed in patients with lymph node metastases, and when examined

Table 4 Correlation between clinicopathological factors and Maspin expression

Clinicopathological parameter		Number(n = 266)	^a Tumor core (n = 266)				^a P value	^b Invasion front (n = 266)			^b P value
			Negative (n = 39)	Cytoplasm(n = 125)	Mixed (n = 85)	Nuclear (n = 17)		Negative (n = 21)	Mixed(n = 201)	Nuclear (n = 44)	
Age (yr)	≤ 60	96	8	37	39	12	< 0.01	5	85	6	> 0.05
	> 60	170	31	88	46	5		16	116	38	
Localization	Proximal/middle	155	21	80	44	10	> 0.05	15	117	23	0.05
	Distal and antrum	95	17	34	41	3		6	84	5	
	Diffuse localization	16	1	11	0	4		0	0	16	
Microscopy	G1+2	75	10	41	22	2	0.01	5	65	5	> 0.05
	G3	76	16	42	14	4		8	54	14	
	Papillary	10	0	5	5	0		0	10	0	
	Poorly cohesive	53	10	19	20	4		8	35	10	
	Signet ring cell	25	2	1	18	4		0	16	9	
	Micro-glandular	27	1	17	6	3		0	21	6	
Budding degree (Dyscohesivity)	Nodular	34	5	20	9	0	< 0.05	0	34	0	> 0.05
	≤ 5 buds/HPF	17	1	10	5	1		0	14	3	
	5-9 buds/HPF	50	7	25	15	3		4	41	5	
	≥ 10 buds/HPF	60	18	27	13	2		7	40	13	
	Diffuse	105	8	43	43	11		10	72	23	
pT stage	pT1,2	37	3	21	10	3	> 0.05	0	21	16	> 0.05
	pT3,4	229	36	104	75	14		21	180	28	
pN stage	pN0	53	9	19	20	5	> 0.05	3	43	7	> 0.05
	pN1-3	213	30	106	65	12		18	158	37	
Dukes-MAC-like stage	1+3 - T1,2N0	17	3	11	3	0	> 0.05	0	17	0	> 0.05
	2+4 - T1,2N1-3	20	0	12	5	3		0	17	3	
	5+7 - T3,4N0	36	6	12	15	3		3	24	9	
	6+8 - T3,4N1-3	193	30	90	62	11		18	143	32	

G1: Well differentiated, G2: Moderately differentiated, G3: Poorly differentiated; pT: Depth of tumor infiltration; pN: Lymph node status.

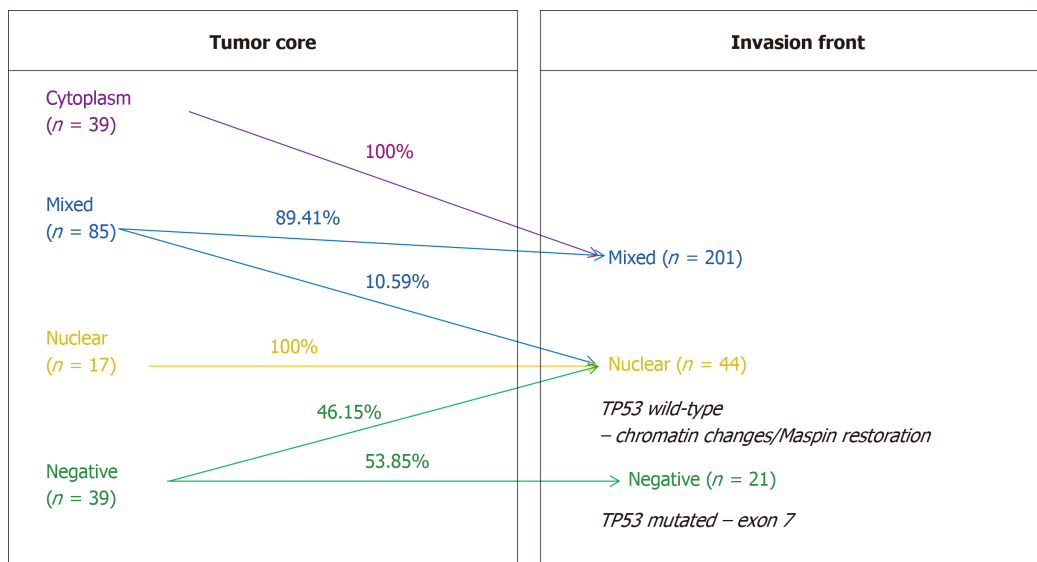
independently the pT stage parameter or combined TN (Dukes-Mac like stage 1 + 3 + 5 + 7) (Figure 7). Multivariate correlation indicated that a negative prognostic value was associated with *TP53* gene mutations, especially in patients without lymph node metastases (Figure 7).

DISCUSSION

As overall survival varies in patients with GC within the same stage, the most recent papers have shown that the currently used TNM staging system is not sufficient for prognosis estimation^[1]. The present study confirmed the utility of the newest Dukes-MAC-like staging system^[9], for a proper estimation of long-time survival, and confirmed the independent prognostic role of IHC expression of Maspin and p53, in patients with GC. Despite the intention of including new biomarkers with prognostic potential, the depth of invasion, combined with lymph node status (pTN stage) remain the strongest predictors of outcome in patients with GC^[8,11].

Table 5 Correlation between the immunohistochemical biomarkers Maspin and p53 expression, in relation to *TP53* gene status

Immunohistochemical parameter			^a P53 nuclear expression (n = 266)				^a P value	^b TP53 gene status (n = 266)		^b P value
			Number (n = 266)	Negative (n = 40)	10%-50% (n = 69)	> 50% (n = 157)		Wild-type (n = 176)	Mutated (n = 90)	
Maspin expression - tumor core	Negative	39	5	7	27	> 0.05	26 (14.77)	13 (14.44)	0.05	
	Cytoplasm	125	19	34	72		74 (42.05)	51 (56.67)		
	Nucleus	17	7	5	5		15 (8.52)	2 (2.22)		
	Mixed	85	9	23	53		61 (34.66)	24 (26.67)		
Maspin expression - invasion front	Negative	21	9	3	9	> 0.05	8 (4.55)	13 (14.44)	< 0.01	
	Nucleus	44	14	16	14		35 (19.88)	9 (10)		
	Mixed	201	17	50	134		133 (75.57)	68 (75.56)		
p53- nuclear expression	Negative	40	-	-	-		30 (17.04)	10 (11.11)	> 0.05	
	5%-50%	69					47 (26.71)	22 (24.44)		
	> 50%	157					99 (56.25)	58 (64.45)		

**Figure 1** In gastric cancer, Maspin nuclear restoration, in the invasion front, can be seen in *TP53* wild-type cases, whereas mutations in exon 7 of the *TP53* gene induces Maspin negativity.

This study confirmed the age-related characteristics^[11], of an increasing number of distally-located GCs, especially adenocarcinomas developed on the background of intestinal metaplasia; however, the clinicopathological features, including grade of dyscohesivity (budding degree), did not have independent prognostic value.

In previously published studies, the presence of *TP53* gene mutation was not proved to be an independent prognostic factor for patients with advanced GCs^[13,14], or it was correlated with a shorter survival^[13,14]. Our study confirmed the longer survival of wt cases, compared to those with *TP53* gene mutation, especially in patients without lymph node metastases.

The *TP53* mutation rate was proved to be dependent by various parameters, including geographic characteristics known to be induced by interactions between *Helicobacter pylori* infection and other environmental, molecular and genetic factors^[13,15,16]. In our study, which included Romanian patients, the mutation rate was 33.83%, similar to American Caucasian (40%) and Hispanic patients (43%), whereas Asian and African American patients, similar to patients in Bangladesh, proved to have significantly elevated mutations rates of 56%, 89%, and 73%, respectively^[16,37].

The literature shows the prevalence of *TP53* somatic mutations (over 95%) in exons

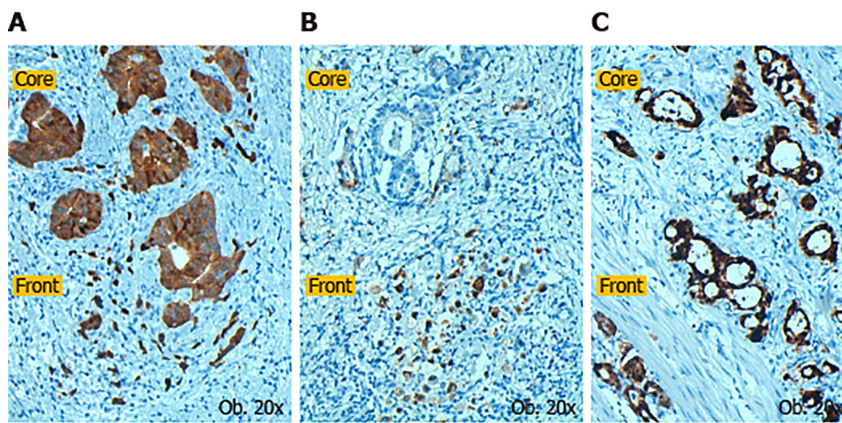


Figure 2 Gastric carcinoma cases which displayed Maspin nuclear expression in the invasion front (A-C). A: The cells from the tumor core may have mixed (nucleus+cytoplasm) positivity; B: The cells from the tumor core can be negative, with Maspin nuclear restoration, in the invasion front; C: But, in some cases, nuclear positivity is the predominant immunostain, in both the core and front.

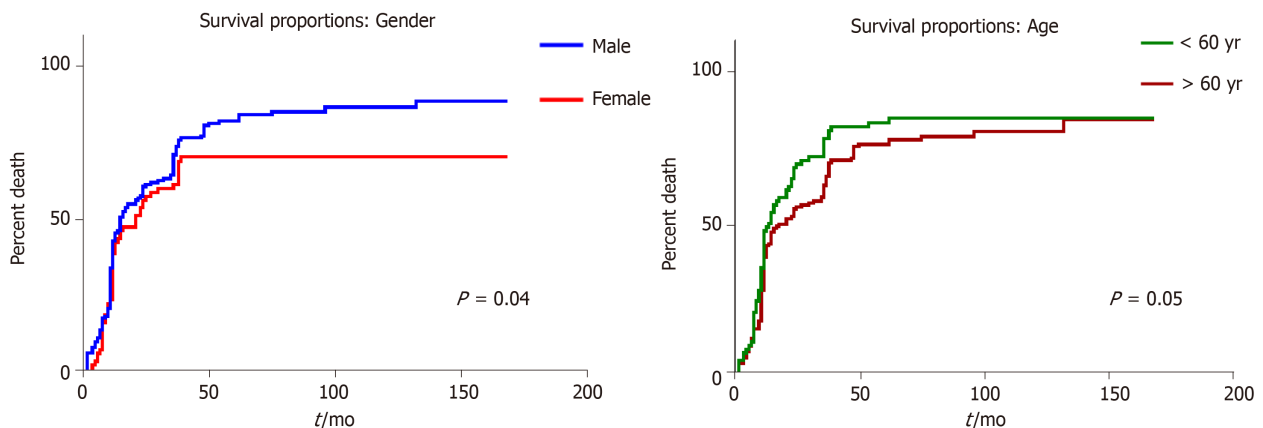


Figure 3 In gastric cancer, overall survival rate is better in males younger than 60 years.

5-8, independent of carcinoma localization^[12,14]. As no correlation was seen between the mutation status of IHC p53 protein expression, this study confirmed that p53 negativity cannot be used as an indicator of wt status^[1]. This aspect is, however, controversial. There are authors who maintain that certain *TP53* somatic mutation types might be associated with p53 negativity, and as wt p53 protein has a very short half-life, it cannot be detected properly using IHC stains and false negative results can be obtained^[12,17]. On the other hand, the clone DO7, also used in the present study, can detect only truncated mutations in exons 9 and 10^[12,17]. Interaction between p53 and Maspin, which was previously proved for colorectal, prostate and bladder cancer^[10,18,19], was partially confirmed in this study, for GC.

In colorectal cancer, experimental studies showed that although Maspin nuclear positivity might be an indicator of aggressive behavior, it also indicates the possibility of responding to 5-Fluorouracil (5-FLU)-based chemotherapy. Most of the colorectal carcinoma cells displaying cytoplasmic and carcinomas with microsatellite instability and nuclear Maspin, were found to be p53 negative^[4,20]. On the other hand, Maspin negative/p53 positive colorectal carcinomas are 5-FLU resistant and have a risk of distant metastases^[4,10,18,20]. The best prognosis was proved for p53 negative cases that displayed cytoplasmic positivity for Maspin, whereas Maspin nuclear staining associated with a p53 index over 50% was an indicator of poor prognosis^[4].

In bladder and prostate cancer, p53 was found to upregulate Maspin expression and stimulate cisplatin-induced apoptosis^[19]. Knockdown of Maspin in p53 wt carcinoma cells stimulates tumor cell proliferation^[19].

Although it was shown that two p53 binding sites are responsible for promoting the human Maspin gene: GGCATGTTGGAGGCCCTTTG and GGA CAA GCT GCC AAG AGG CTT GAGT^[2,19,21], no relevant data on the Maspin-p53 interaction have been published for GC. The present study suggests that knockdown of Maspin might be

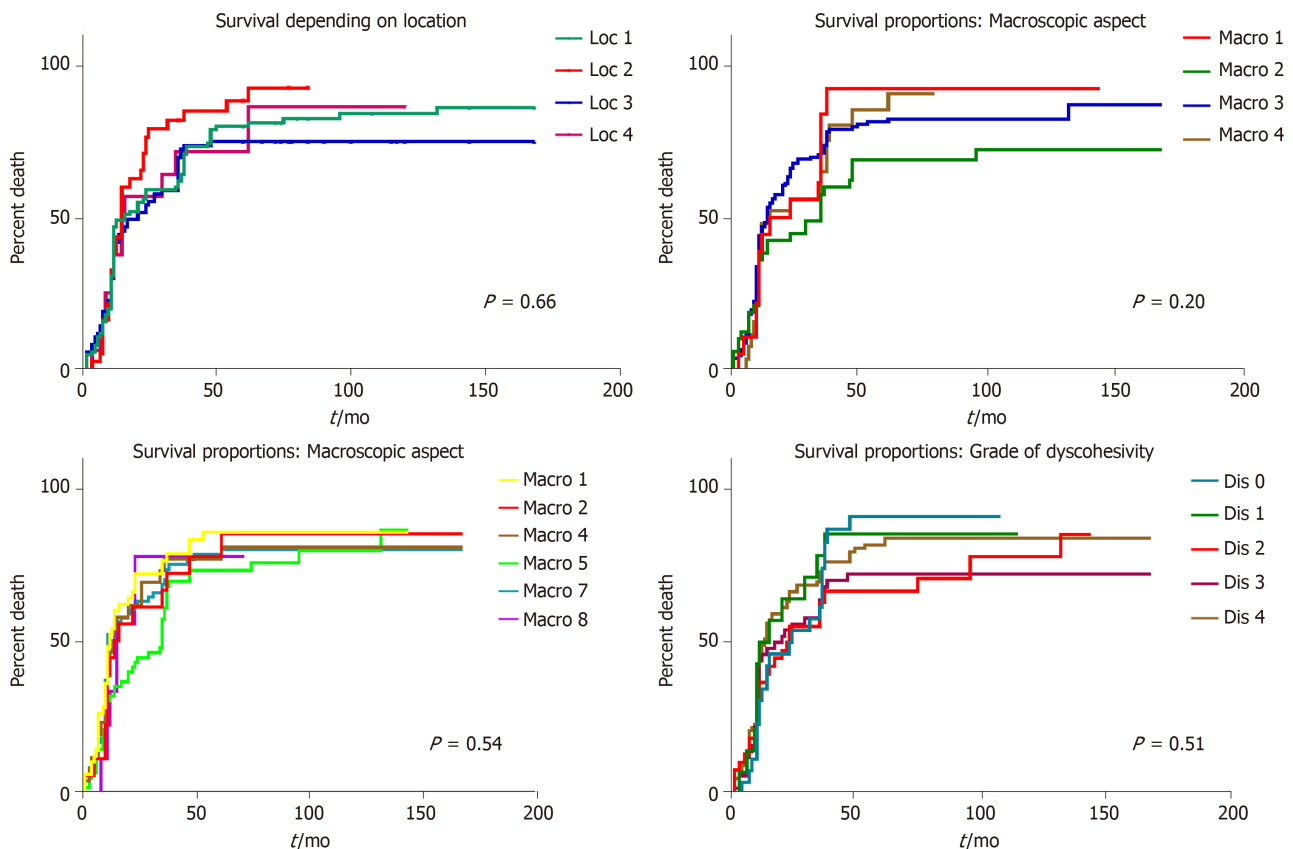


Figure 4 In patients with gastric cancer, overall survival rate does not depend on tumor localization, macroscopic or microscopic aspect or budding degree.

induced by G:C→A:T transition in exon 7 of the *TP53* gene. As Maspin negative GCs have a high risk of distant metastases^[3], the role of exon 7 in GC behavior, especially in cases without lymph node metastases, should be more extensively examined.

Another unusual finding is the absence of *TP53* gene mutations in cases with nuclear Maspin positivity in the tumor front, known to be a risk for local relapse and lymph node metastases^[3]. Nuclear positivity was present in the invasion front and tumor core in only 17/44 positive cases and in over 46% of negative cases, in the core, and Maspin nuclear expression was found in the invasion area only. In cell cultures, wt *TP53* induced chromatin changes and even partial Maspin restoration, approaching basal levels in non-tumorigenic cells^[2].

The previous results obtained by our team and other publications show that in GC, Maspin is downregulated in carcinoma cells, compared with normal mucosa, and silencing of Maspin increases metastatic behavior^[2,3]. The present study showed that Maspin silencing occurs more frequently in cases with mutations in exon 7 of the *TP53* gene, but wt p53 may induce changes in chromatin architecture and reactivate nuclear Maspin, in the invasion front, decreasing the risk of distant metastases. The small number of cases does not allow interpretation of the relationship between p53 and mixed Maspin in which, probably, partial Maspin restoration is only obtained.

An in-depth examination of *TP53* gene status, which is one of the most frequently mutated tumor suppressor genes, was proved to influence GC behavior. Similar to other studies, *TP53* mutations, independently of the involved exon, were observed to increase the capacity of tumor invasion^[1].

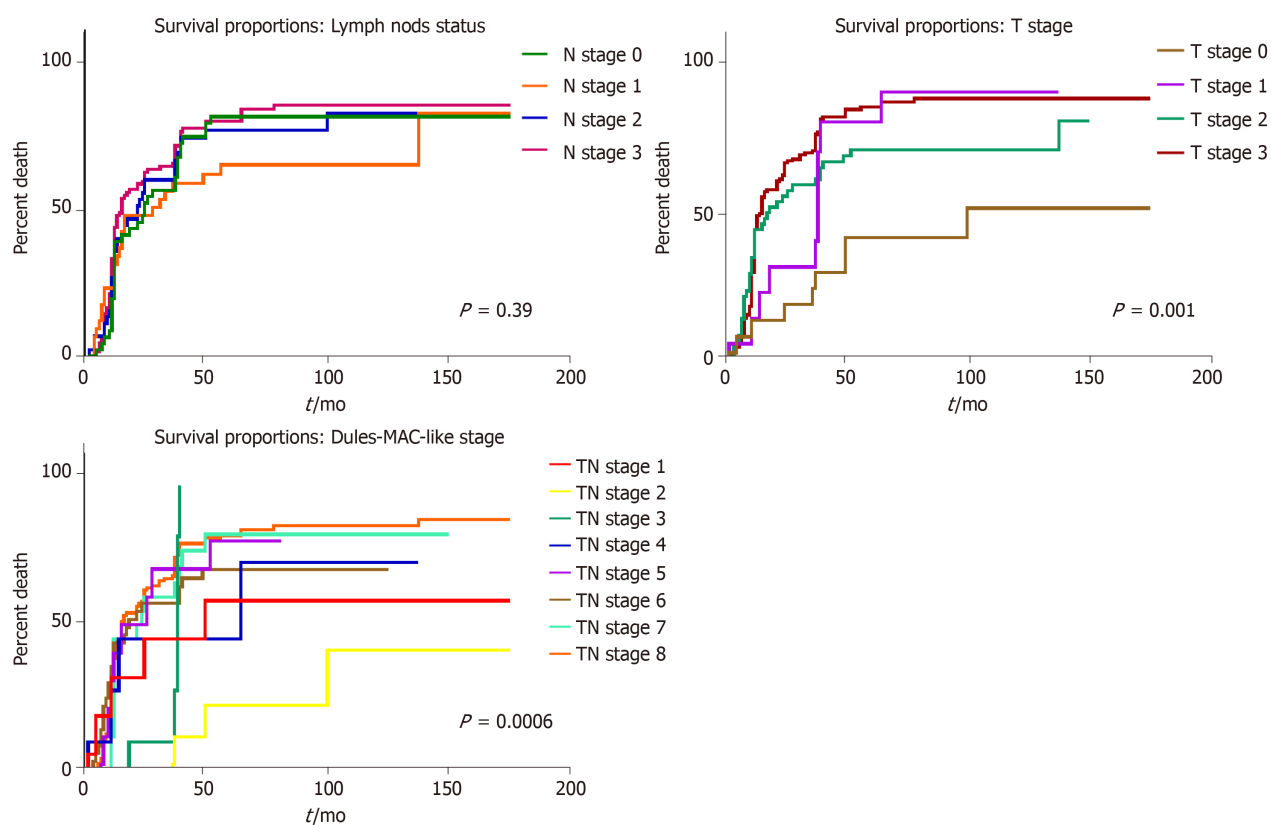


Figure 5 In patients with gastric cancer, the most significant independent prognostic parameter is the depth of infiltration, especially when it correlates with the lymph node status.

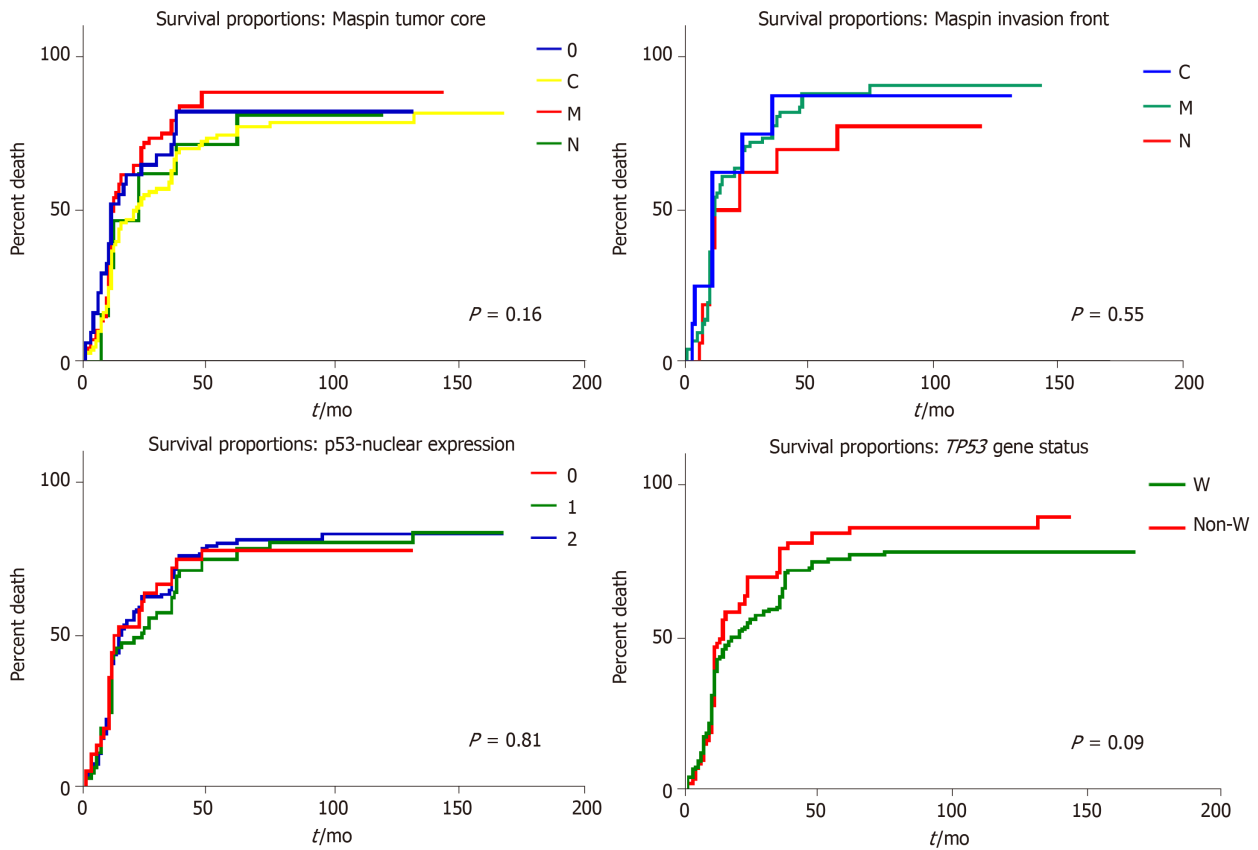


Figure 6 In patients with gastric cancer, the immunohistochemical expression of Maspin (0-negative; c-cytoplasm expression; m-mixed expression; N-nuclear positivity) and p53 (0-negative; 1-below 50%; 2-over 50%) does not have independent prognostic value, but wild-type *TP53* cases (W) have a slightly longer survival time.

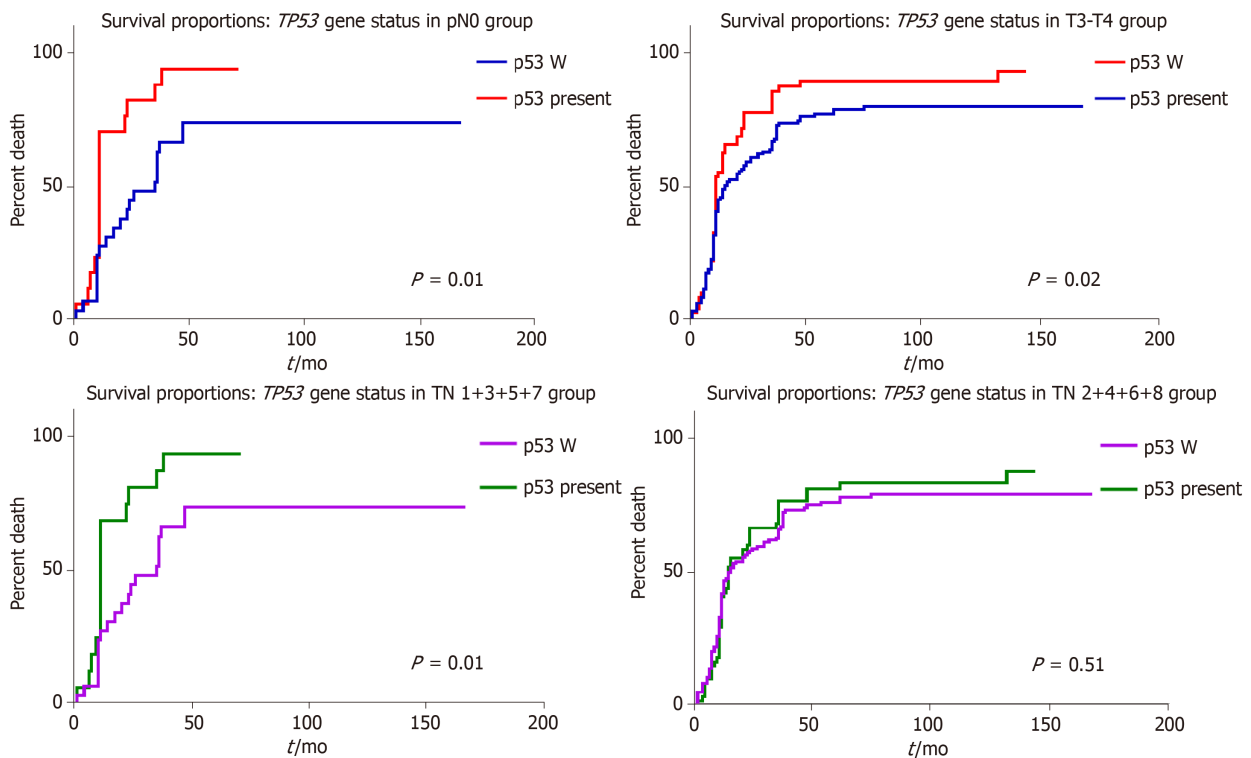


Figure 7 In patients with gastric cancer, wild-type *TP53* cases (W) have a longer survival time, compared with mutant *TP53* carcinomas, especially in tumors diagnosed before the occurrence of lymph node metastases.

ARTICLE HIGHLIGHTS

Research background

Maspin is a serine protease that has been extensively studied by our team using immunostaining in gastric cancer (GC) and colorectal cancer samples. Our previous data, which are in line with literature data, showed that the role of Maspin is strongly dependent on its subcellular expression. In GC cells, Maspin downregulation increases the metastatic potential, cytoplasmic localization induces a better prognosis and nuclear staining is correlated with a higher local invasion.

Research motivation

As data on the correlation between Maspin and p53 are scarce in GC, the aim of this study was to determine the particular features of this possible interaction.

Research objectives

We compared immunohistochemical (IHC) staining of p53 and a p53 gene-related protein Maspin in GCs, and correlated the results with the *TP53* gene expression profile. The independent prognostic values of the examined parameters were also determined.

Research methods

In 266 consecutive GC samples, we performed IHC staining with Maspin and p53 antibodies, and performed sequencing (from paraffin-embedded tissues), to determine *TP53* gene mutations in exons 2 to 11.

Research results

In the examined cohort, the *TP53* gene mutation rate was 33.83%, and no correlation with the immunoexpression of p53 protein was observed. Wild-type cases, especially those without lymph node metastases, had a better survival rate. The most significant independent prognostic parameter proved to be the Dukes-MAC-like tumor stage. Statistical correlations proved that Maspin nuclear restoration, in the invasion front, can be obtained in *TP53* wild-type cases, whereas mutations in exon 7 of the *TP53* gene induce Maspin negativity, in both the tumor core and invasion area.

Research conclusions

Despite several prognostic parameters proposed for GC, the survival rate is better predicted by the classic TN stage. Downregulated Maspin might be induced by mutations in exon 7 of the *TP53* gene but wild-type p53 can partially restore nuclear Maspin expression.

Research perspectives

As the possible role of mutations in exon 7 of the *TP53* gene was proved for the first time in the present study, following downregulation of Maspin, further investigations are necessary to elucidate the possible therapeutic role of anti-Maspin chemical derivatives.

REFERENCES

- 1 Shin YJ, Kim Y, Wen X, Cho NY, Lee S, Kim WH, Kang GH. Prognostic implications and interaction of L1 methylation and p53 expression statuses in advanced gastric cancer. *Clin Epigenetics* 2019; **11**: 77 [PMID: 31088544 DOI: 10.1186/s13148-019-0661-x]
- 2 Oshiro MM, Watts GS, Wozniak RJ, Junk DJ, Munoz-Rodriguez JL, Domann FE, Futscher BW. Mutant p53 and aberrant cytosine methylation cooperate to silence gene expression. *Oncogene* 2003; **22**: 3624-3634 [PMID: 12789271 DOI: 10.1038/sj.onc.1206545]
- 3 Gurzu S, Kadar Z, Sugimura H, Orlowska J, Bara T, Bara T Jr, Szederjesi J, Jung I. Maspin-related Orchestration of Aggressiveness of Gastric Cancer. *Appl Immunohistochem Mol Morphol* 2016; **24**: 326-336 [PMID: 26067133 DOI: 10.1097/PAL.0000000000000189]
- 4 Gurzu S, Szentirmay Z, Jung I. Molecular classification of colorectal cancer: a dream that can become a reality. *Rom J Morphol Embryol* 2013; **54**: 241-245 [PMID: 23771065]
- 5 Banias L, Jung I, Bara T, Fulop Z, Simu P, Simu I, Satala C, Gurzu S. Immunohistochemical-based molecular subtyping of colorectal carcinoma using maspin and markers of epithelial-mesenchymal transition. *Oncol Lett* 2020; **19**: 1487-1495 [PMID: 31966075 DOI: 10.3892/ol.2019.11228]
- 6 Ajani JA, In H, Sano T, Gaspar LE, Erasmus JJ, Tang LH, Washington MK, Gerdes H, Wittekind CW, Mansfield PF, Rimmer C, Hofstetter WL, Kelsen D. Amin MB, editor-in-chief. American Joint Committee

- on Cancer. Cancer Staging Manual, Eighth Edition. New York: Springer 2017; 203-219 [DOI: [10.1007/978-3-319-40618-3_17](https://doi.org/10.1007/978-3-319-40618-3_17)]
- 7 **Banias L**, Gurzu S, Kovacs Z, Bara T, Bara T Jr, Jung I. Nuclear maspin expression: A biomarker for budding assessment in colorectal cancer specimens. *Pathol Res Pract* 2017; **213**: 1227-1230 [PMID: [28780084](https://pubmed.ncbi.nlm.nih.gov/28780084/) DOI: [10.1016/j.prp.2017.07.025](https://doi.org/10.1016/j.prp.2017.07.025)]
 - 8 **Ulaş D**, Heckl S, Behrens HM, Krüger S, Röcken C. Prognostic significance of tumour budding assessed in gastric carcinoma according to the criteria of the International Tumour Budding Consensus Conference. *Histopathology* 2020; **76**: 433-446 [PMID: [31538348](https://pubmed.ncbi.nlm.nih.gov/31538348/) DOI: [10.1111/his.13997](https://doi.org/10.1111/his.13997)]
 - 9 **Gurzu S**, Sugimura H, Orlowska J, Szederjesi J, Szentirmay Z, Bara T, Bara T Jr, Fetyko A, Jung I. Proposal of a Dukes-MAC-like staging system for gastric cancer. *J Investig Med* 2017; **65**: 316-322 [PMID: [27634644](https://pubmed.ncbi.nlm.nih.gov/27634644/) DOI: [10.1136/jim-2016-000270](https://doi.org/10.1136/jim-2016-000270)]
 - 10 **Gurzu S**, Szentirmay Z, Popa D, Jung I. Practical value of the new system for Maspin assessment, in colorectal cancer. *Neoplasma* 2013; **60**: 373-383 [PMID: [23581409](https://pubmed.ncbi.nlm.nih.gov/23581409/) DOI: [10.4149/neo_2013_049](https://doi.org/10.4149/neo_2013_049)]
 - 11 **Gurzu S**, Kadar Z, Sugimura H, Bara T, Bara T Jr, Halmaciu I, Jung I. Gastric cancer in young vs old Romanian patients: immunoprofile with emphasis on maspin and mena protein reactivity. *APMIS* 2015; **123**: 223-233 [PMID: [25556597](https://pubmed.ncbi.nlm.nih.gov/25556597/) DOI: [10.1111/apm.12347](https://doi.org/10.1111/apm.12347)]
 - 12 **Ando K**, Oki E, Saeiki H, Yan Z, Tsuda Y, Hidaka G, Kasagi Y, Otsu H, Kawano H, Kitao H, Morita M, Maehara Y. Discrimination of p53 immunohistochemistry-positive tumors by its staining pattern in gastric cancer. *Cancer Med* 2015; **4**: 75-83 [PMID: [25354498](https://pubmed.ncbi.nlm.nih.gov/25354498/) DOI: [10.1002/cam4.346](https://doi.org/10.1002/cam4.346)]
 - 13 **van Beek EJA H**, Hernandez JM, Goldman DA, Davis JL, McLaughlin K, Ripley RT, Kim TS, Tang LH, Hechtman JF, Zheng J, Capanu M, Schultz N, Hyman DM, Ladanyi M, Berger MF, Solit DB, Janjigian YY, Strong VE. Rates of TP53 Mutation are Significantly Elevated in African American Patients with Gastric Cancer. *Ann Surg Oncol* 2018; **25**: 2027-2033 [PMID: [29725898](https://pubmed.ncbi.nlm.nih.gov/29725898/) DOI: [10.1245/s10434-018-6502-x](https://doi.org/10.1245/s10434-018-6502-x)]
 - 14 **Petitjean A**, Achatz MI, Borresen-Dale AL, Hainaut P, Olivier M. TP53 mutations in human cancers: functional selection and impact on cancer prognosis and outcomes. *Oncogene* 2007; **26**: 2157-2165 [PMID: [17401424](https://pubmed.ncbi.nlm.nih.gov/17401424/) DOI: [10.1038/sj.onc.1210302](https://doi.org/10.1038/sj.onc.1210302)]
 - 15 **Kadar Z**, Jung I, Orlowska J, Szentirmay Z, Sugimura H, Turdean S, Simona G. Geographic particularities in incidence and etiopathogenesis of sporadic gastric cancer. *Pol J Pathol* 2015; **66**: 254-259 [PMID: [26619104](https://pubmed.ncbi.nlm.nih.gov/26619104/) DOI: [10.5114/PJP.2015.54959](https://doi.org/10.5114/PJP.2015.54959)]
 - 16 **Rahman MM**, Sarker MAK, Hossain MM, Alam MS, Islam MM, Shirin L, Sultana R, Sultana GNN. Association of p53 Gene Mutation With *Helicobacter pylori* Infection in Gastric Cancer Patients and Its Correlation With Clinicopathological and Environmental Factors. *World J Oncol* 2019; **10**: 46-54 [PMID: [30834051](https://pubmed.ncbi.nlm.nih.gov/30834051/) DOI: [10.14740/wjon1087](https://doi.org/10.14740/wjon1087)]
 - 17 **Shahin MS**, Hughes JH, Sood AK, Buller RE. The prognostic significance of p53 tumor suppressor gene alterations in ovarian carcinoma. *Cancer* 2000; **89**: 2006-2017 [PMID: [11064359](https://pubmed.ncbi.nlm.nih.gov/11064359/) DOI: [10.1002/1097-0142\(20001101\)89:9<2006::aid-cnrcr18>3.3.co;2-z](https://doi.org/10.1002/1097-0142(20001101)89:9<2006::aid-cnrcr18>3.3.co;2-z)]
 - 18 **Gurzu S**, Szentirmay Z, Toth E, Jung I. Possible predictive value of maspin expression in colorectal cancer. *Recent Pat Anticancer Drug Discov* 2013; **8**: 183-190 [PMID: [22963136](https://pubmed.ncbi.nlm.nih.gov/22963136/)]
 - 19 **Lin YH**, Tsui KH, Chang KS, Hou CP, Feng TH, Juang HH. Maspin is a PTEN-Upregulated and p53-Upregulated Tumor Suppressor Gene and Acts as an HDAC1 Inhibitor in Human Bladder Cancer. *Cancers (Basel)* 2019; **12**: 10 [PMID: [31861435](https://pubmed.ncbi.nlm.nih.gov/31861435/) DOI: [10.3390/cancers12010010](https://doi.org/10.3390/cancers12010010)]
 - 20 **Murnyák B**, Hortobágyi T. Immunohistochemical correlates of TP53 somatic mutations in cancer. *Oncotarget* 2016; **7**: 64910-64920 [PMID: [27626311](https://pubmed.ncbi.nlm.nih.gov/27626311/) DOI: [10.18632/oncotarget.11912](https://doi.org/10.18632/oncotarget.11912)]
 - 21 **Tsui KH**, Lin YH, Chang KS, Hou CP, Chen PJ, Feng TH, Juang HH. Transgelin, a p53 and PTEN-Upregulated Gene, Inhibits the Cell Proliferation and Invasion of Human Bladder Carcinoma Cells in Vitro and in Vivo. *Int J Mol Sci* 2019 [PMID: [31591355](https://pubmed.ncbi.nlm.nih.gov/31591355/) DOI: [10.3390/ijms20194946](https://doi.org/10.3390/ijms20194946)]



Published by **Baishideng Publishing Group Inc**
7041 Koll Center Parkway, Suite 160, Pleasanton, CA 94566, USA

Telephone: +1-925-3991568

E-mail: bpgoffice@wjgnet.com

Help Desk: <https://www.f6publishing.com/helpdesk>

<https://www.wjgnet.com>

