

# World Journal of *Gastroenterology*

*World J Gastroenterol* 2019 March 28; 25(12): 1432-1530



**GUIDELINES**

- 1432** International consensus statement on robotic hepatectomy surgery in 2018  
*Liu R, Wakabayashi G, Kim HJ, Choi GH, Yiengpruksawan A, Fong Y, He J, Boggi U, Troisi RI, Efanov M, Azoulay D, Panaro F, Pessaux P, Wang XY, Zhu JY, Zhang SG, Sun CD, Wu Z, Tao KS, Yang KH, Fan J, Chen XP*

**REVIEW**

- 1445** Growing burden of alcoholic liver disease in China: A review  
*Wang WJ, Xiao P, Xu HQ, Niu JQ, Gao YH*

**MINIREVIEWS**

- 1457** Esophageal diverticulum: New perspectives in the era of minimally invasive endoscopic treatment  
*Sato H, Takeuchi M, Hashimoto S, Mizuno KI, Furukawa K, Sato A, Yokoyama J, Terai S*

**ORIGINAL ARTICLE****Basic Study**

- 1465** Anti-tumor necrosis factor  $\alpha$  therapy associates to type 17 helper T lymphocytes immunological shift and significant microbial changes in dextran sodium sulphate colitis  
*Petito V, Graziani C, Lopetuso LR, Fossati M, Battaglia A, Arena V, Scannone D, Quaranta G, Quagliariello A, Del Chierico F, Putignani L, Masucci L, Sanguinetti M, Sgambato A, Gasbarrini A, Scaldaferrì F*
- 1478** Gut microbiota profile in healthy Indonesians  
*Rahayu ES, Utami T, Mariyatun M, Hasan PN, Kamil RZ, Setyawan RH, Pamungkaningtyas FH, Harahap IA, Wiryohanjoyo DV, Pramesi PC, Cahyanto MN, Sujaya IN, Juffrie M*
- 1492** Ursodeoxycholic acid ameliorates hepatic lipid metabolism in LO2 cells by regulating the AKT/mTOR/SREBP-1 signaling pathway  
*Hu J, Hong W, Yao KN, Zhu XH, Chen ZY, Ye L*

**Retrospective Study**

- 1502** Risk factors for local recurrence and appropriate surveillance interval after endoscopic resection  
*Komeda Y, Watanabe T, Sakurai T, Kono M, Okamoto K, Nagai T, Takenaka M, Hagiwara S, Matsui S, Nishida N, Tsuji N, Kashida H, Kudo M*

**Observational Study**

- 1513** Accuracy of multi-echo Dixon sequence in quantification of hepatic steatosis in Chinese children and adolescents  
*Zhao YZ, Gan YG, Zhou JL, Liu JQ, Cao WG, Cheng SM, Bai DM, Wang MZ, Gao FQ, Zhou SM*

**CASE REPORT**

- 1524** Long-term survival of a patient with advanced pancreatic cancer under adjunct treatment with *Viscum album* extracts: A case report  
*Werthmann PG, Kempenich R, Lang-Avérous G, Kienle GS*

**ABOUT COVER**

Editorial board member of *World Journal of Gastroenterology*, Jose Manuel Martin-Villa, PhD, Professor, Department of Microbiology I (Immunology), Facultad de Medicina, Universidad Complutense de Madrid, Madrid 28040, Spain

**AIMS AND SCOPE**

*World Journal of Gastroenterology* (*World J Gastroenterol*, *WJG*, print ISSN 1007-9327, online ISSN 2219-2840, DOI: 10.3748) is a peer-reviewed open access journal. The *WJG* Editorial Board consists of 642 experts in gastroenterology and hepatology from 59 countries.

The primary task of *WJG* is to rapidly publish high-quality original articles, reviews, and commentaries in the fields of gastroenterology, hepatology, gastrointestinal endoscopy, gastrointestinal surgery, hepatobiliary surgery, gastrointestinal oncology, gastrointestinal radiation oncology, etc. The *WJG* is dedicated to become an influential and prestigious journal in gastroenterology and hepatology, to promote the development of above disciplines, and to improve the diagnostic and therapeutic skill and expertise of clinicians.

**INDEXING/ABSTRACTING**

The *WJG* is now indexed in Current Contents®/Clinical Medicine, Science Citation Index Expanded (also known as SciSearch®), Journal Citation Reports®, Index Medicus, MEDLINE, PubMed, PubMed Central, Scopus and Directory of Open Access Journals. The 2018 edition of Journal Citation Report® cites the 2017 impact factor for *WJG* as 3.300 (5-year impact factor: 3.387), ranking *WJG* as 35<sup>th</sup> among 80 journals in gastroenterology and hepatology (quartile in category Q2).

**RESPONSIBLE EDITORS  
FOR THIS ISSUE**

Responsible Electronic Editor: Han Song

Proofing Editorial Office Director: Ze-Mao Gong

**NAME OF JOURNAL***World Journal of Gastroenterology***ISSN**

ISSN 1007-9327 (print) ISSN 2219-2840 (online)

**LAUNCH DATE**

October 1, 1995

**FREQUENCY**

Weekly

**EDITORS-IN-CHIEF**

Subrata Ghosh, Andrzej S Tarnawski

**EDITORIAL BOARD MEMBERS**<http://www.wjgnet.com/1007-9327/editorialboard.htm>**EDITORIAL OFFICE**

Ze-Mao Gong, Director

**PUBLICATION DATE**

March 28, 2019

**COPYRIGHT**

© 2019 Baishideng Publishing Group Inc

**INSTRUCTIONS TO AUTHORS**<https://www.wjgnet.com/bpg/gerinfo/204>**GUIDELINES FOR ETHICS DOCUMENTS**<https://www.wjgnet.com/bpg/GerInfo/287>**GUIDELINES FOR NON-NATIVE SPEAKERS OF ENGLISH**<https://www.wjgnet.com/bpg/gerinfo/240>**PUBLICATION MISCONDUCT**<https://www.wjgnet.com/bpg/gerinfo/208>**ARTICLE PROCESSING CHARGE**<https://www.wjgnet.com/bpg/gerinfo/242>**STEPS FOR SUBMITTING MANUSCRIPTS**<https://www.wjgnet.com/bpg/GerInfo/239>**ONLINE SUBMISSION**<https://www.f6publishing.com>





## Long-term survival of a patient with advanced pancreatic cancer under adjunct treatment with *Viscum album* extracts: A case report

Paul G Werthmann, Robert Kempenich, Gerlinde Lang-Avérous, Gunver S Kienle

**ORCID number:** Paul G Werthmann (0000-0002-1808-7787); Robert Kempenich (0000-0002-4499-0267); Gerlinde Lang-Avérous (0000-0002-4151-5567); Gunver S Kienle (0000-0001-9498-5944).

**Author contributions:** Werthmann PG, Kempenich R, Lang-Avérous G and Kienle GS contributed to the case report design. Kempenich R was the physician in charge who provided the patient's information. Lang-Avérous G provided the histologic images and confirmed the diagnosis and contributed the details about the histologic diagnosis. Werthmann PG and Kempenich R collected and provided the data. Werthmann PG was the principle author of the paper, had full access to all data, and is the guarantor. Kienle GS supervised the report and the publication process. All authors read and confirmed the final version of this article.

**Supported by** Stiftung Integrative Medizin Stuttgart, Germany.

**Informed consent statement:** Informed consent was received from the patient for the publication of the report and accompanying images. The patient read the submission version of the report and confirmed its content.

**Conflict-of-interest statement:** The authors have declared no conflicts of interest.

**CARE Checklist (2016) statement:** This case report was prepared following the CARE Guideline.

**Open-Access:** This article is an

**Paul G Werthmann, Gunver S Kienle,** Department of Methodology, Institute for Applied Epistemology and Medical Methodology (IFAEMM), Freiburg 79111, Germany

**Paul G Werthmann, Gunver S Kienle,** Center for Complementary Medicine, Institute for Environmental Health Sciences and Hospital Infection Control, Medical Center - University of Freiburg, Freiburg 79106, Germany

**Robert Kempenich,** Private Praxis, General Practitioner with Specialization in Oncology, Strasbourg F-67000, France

**Gerlinde Lang-Avérous,** Department of Pathology, Hôpital de Hautepierre, University Hospital of Strasbourg, Strasbourg F-67000, France

**Corresponding author:** Paul G Werthmann, MD, Academic Research, Department of Methodology, Institute for Applied Epistemology and Medical Methodology (IFAEMM), Zechenweg 6, Freiburg 79111, Germany. [paul.werthmann@ifaemm.de](mailto:paul.werthmann@ifaemm.de)

**Telephone:** +49-15771984421

### Abstract

#### BACKGROUND

Advanced pancreatic cancer (aPC) has a poor prognosis with limited survival benefit from current standard treatment. *Viscum album* extracts (VAE) are used by many cancer patients, showing immune-stimulating effects, improved quality of life, and a survival benefit in patients with aPC.

#### CASE SUMMARY

A 59-year-old architect developed epigastric pain. A cystic lesion of the pancreas of 45-mm diameter was detected. In a follow-up magnetic resonance imaging, about one year later, multiple lesions were seen in the corpus and the tail of the pancreas; CA-19-9 was elevated to 58.5 U/mL. A distal pancreatectomy with splenectomy was performed, and a tumor of 7 cm × 5 cm × 3.5 cm was excised. Histologic investigation showed an intraductal papillary mucinous neoplasm-associated invasive adenocarcinoma with invasion of the lymph vessels, perineural invasion, and positive nodes (2/27); surgical margins showed tumor cells, and the tumor was classified as pT3 N1 M0 R1. The patient was treated with radiation of the tumor bed and capecitabine/oxaliplatin followed by gemcitabine and FOLFIRINOX. Seven months after surgery, a liver metastasis was detected and treatment with FOLFIRINOX was started. Four months after detection of the metastasis, the patient opted for additional treatment with VAE. Another month later, the metastasis was treated with radiofrequency ablation (RFA). Eight months later, the hepatic lesion recurred and was again treated with RFA. The

open-access article which was selected by an in-house editor and fully peer-reviewed by external reviewers. It is distributed in accordance with the Creative Commons Attribution Non Commercial (CC BY-NC 4.0) license, which permits others to distribute, remix, adapt, build upon this work non-commercially, and license their derivative works on different terms, provided the original work is properly cited and the use is non-commercial. See: <http://creativecommons.org/licenses/by-nc/4.0/>

**Manuscript source:** Unsolicited manuscript

**Received:** November 1, 2018

**Peer-review started:** November 1, 2018

**First decision:** December 20, 2018

**Revised:** February 13, 2019

**Accepted:** March 1, 2019

**Article in press:** March 2, 2019

**Published online:** March 28, 2019

**P-Reviewer:** Ramia JM, Sandhu DS, Sugimoto M, Yang F

**S-Editor:** Ma RY

**L-Editor:** A

**E-Editor:** Ma YJ



continuous VAE treatment was increased in dose, and the patient stayed recurrence-free for the next 39 mo in good health and working full-time (as of the time this case report was written).

## CONCLUSION

We present the case of a patient with aPC with R1-resection with development of liver metastasis during the course of treatment who showed an overall survival of 63 mo and a relapse-free survival of 39 mo under increasing VAE therapy. The possible synergistic effect on tumor control of RFA treatment and immune-stimulatory effects of VAE should be further investigated.

**Key words:** Pancreatic cancer; Integrative medicine; *Viscum album* extract; Radiofrequency ablation; Case report

©The Author(s) 2019. Published by Baishideng Publishing Group Inc. All rights reserved.

**Core tip:** We herewith present a case report of a patient with advanced pancreatic cancer with a survival time of 63 mo despite 2 times of relapse und continuous treatment with *Viscum album* extracts. The patient preserved a good quality of live, regained his weight after weight loss during chemotherapy and is currently working full-time in his job.

**Citation:** Werthmann PG, Kempenich R, Lang-Avérous G, Kienle GS. Long-term survival of a patient with advanced pancreatic cancer under adjunct treatment with *Viscum album* extracts: A case report. *World J Gastroenterol* 2019; 25(12): 1524-1530

**URL:** <https://www.wjgnet.com/1007-9327/full/v25/i12/1524.htm>

**DOI:** <https://dx.doi.org/10.3748/wjg.v25.i12.1524>

## INTRODUCTION

Pancreatic cancer (PC) is a common malignancy (incidence 12.6/100.000 in the United States<sup>[1]</sup>), with a dismal prognosis (5-year survival of 2%<sup>[2]</sup>), especially in cases of locally advanced disease (median survival of 8-12 mo<sup>[3]</sup>). Intraductal papillary mucinous neoplasm (IPMN)-associated invasive adenocarcinoma of the pancreas is a histologic subtype of PC that has to be kept distinct from mucinous cystic neoplasms of the pancreas<sup>[4]</sup>; IPMN-associated invasive adenocarcinoma shows a better prognosis due to earlier onset of clinical symptoms compared to pancreatic ductal adenocarcinoma (PDA). However, prognosis of IPMN-associated and standard PDA are equally poor when compared by stage<sup>[5]</sup>. In all PC patients in which R0-resection seems feasible, surgery is recommended. R0-resected patients show a strong survival benefit compared to R1-resected patients<sup>[6]</sup>. Type of chemotherapy regimen - as primary or adjuvant treatment - is chosen according to tumor stage and performance status<sup>[7]</sup>. Radiofrequency ablation (RFA) is increasingly used in advanced PC (aPC); the procedure is safe, but comparative randomized trials on effectiveness are lacking<sup>[8-10]</sup>.

*Viscum album* (European mistletoe, *Viscum album* L.) is a hemiparasitic shrub, growing on different host trees (oak, apple, pine and others). Aqueous *Viscum album* extracts (VAE) show a variety of antineoplastic properties including cytotoxic effects, apoptosis induction, immune stimulation, down-regulation of cancer genes (e.g., transforming growth factor  $\beta$  and matrix-metalloproteinases), reduction of cell migration, and reduction of tumor angiogenesis<sup>[11-14]</sup>. Active compounds of VAE are especially mistletoe lectins and viscotoxins, but also oligo- and polysaccharides, flavonoids, and triterpene acids<sup>[14]</sup>. Injectable forms of VAE preparations (typically for subcutaneous use, or - as off-label use - for intralesional or intravenous application) are commercially available, and are used as supportive cancer therapy<sup>[15]</sup>. VAE show a common range of local reactions such as erythema at the injection site and general reactions like fever and flu-like symptoms. Rarely, pseudo allergic reactions can occur. VAE are safe, even when used in higher dosages<sup>[16]</sup>.

## CASE PRESENTATION

### **Chief complaints**

A 59-year-old architect developed epigastric pain. He had a body mass index (BMI) of 30 (body weight of 92 kg, height of 175 cm) and was a nonsmoker.

### **History of present illness**

Nothing to declare.

### **History of past illness**

The patient had a history of bronchial asthma and suffered from gastroesophageal reflux disease, which was treated with esomeprazole.

### **Personal and family history**

His father had died from metastatic colon cancer.

### **Laboratory examinations**

CA-19-9 was elevated to 58.5 U/mL.

### **Imaging examinations**

A cystic lesion of the pancreas of 45-mm diameter was seen in ultrasound and confirmed by computed tomography (CT) scan. In a follow-up magnetic resonance imaging (MRI), about one year after initial symptoms, multiple lesions were seen in the corpus and the tail of the pancreas (Figure 1A and B). A splenopancreatectomy was performed, and a tumor of 7 cm × 5 cm × 3.5 cm of the pancreatic tail was excised. Histologic investigation showed a poorly demarcated IPMN-associated hypermucinous invasive adenocarcinoma with invasion of the lymph vessels, perineural invasion, and positive nodes (2/27); the tumor was 1 mm in the ventral resection margin, and the dorsal margin showed tumor parts (Figure 2). The tumor was classified as pT3 N1 M0 R1.

---

## **FINAL DIAGNOSIS**

A patient with aPC.

---

## **TREATMENT**

The patient was treated with radiation of the tumor bed (59.4 Gy) and capecitabine and oxaliplatin followed by gemcitabine and 8 cycles of FOLFIRINOX (folinic acid 390 mg, fluorouracil 4700 mg, irinotecan 340 mg, oxaliplatin 150 mg).

---

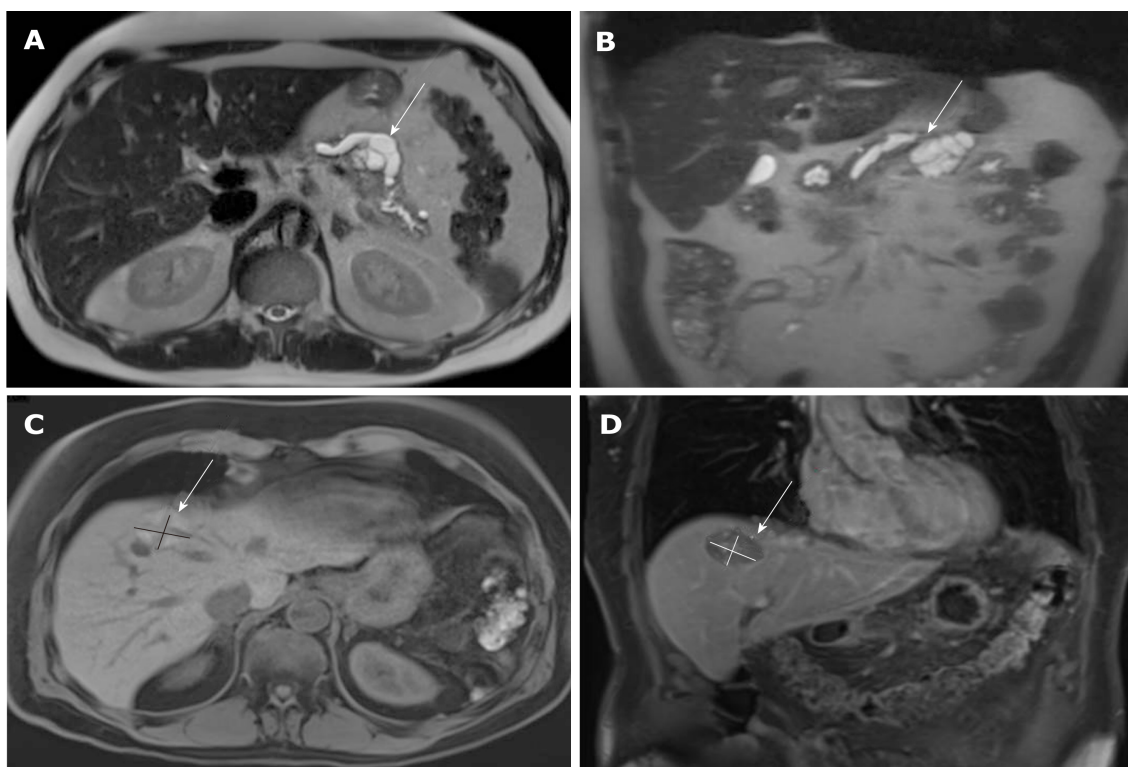
## **OUTCOME AND FOLLOW-UP**

About 7 mo after surgery, a liver metastasis 2 cm in diameter in segment VIII was detected, and therefore treatment with FOLFIRINOX was started. Four months after detection of the metastasis the patient opted for additional continuous treatment with VAE (Iscador Qu 10 mg, 3 injections per week). Another month later, the metastasis was still unchanged despite chemotherapy and therefore treated with RFA. Eight months later, the hepatic lesion recurred within the scar tissue of the first metastasis, showing a lesion about 2 cm in diameter (Figure 1C and D). It was again treated by RFA and by a dose increase of VAE (Figure 3). The lesion regressed again and the patient stayed recurrence-free for the next 39 mo (as of the writing of this case report; for details of the disease and treatment course, see Figure 3).

---

## **DISCUSSION**

We present a case of a 59-year-old patient with an aPC who underwent resection but showed positive margins (R1), with two relapses (liver metastases) after radiochemotherapy and RFA of metastases. The patient continuously received an adjunct treatment with VAE in increasing doses beginning shortly after detection of the liver metastasis and continuing until present. He showed prolonged survival and good health 63 mo after initial diagnosis. The patient had an advanced primary tumor, perineural invasion, lymph vascular invasion, node involvement, and positive resection margins - all of which are independent negative prognostic factors<sup>[17]</sup>. In this patient, surgical excision was possible - a circumstance associated with an improved



**Figure 1** Magnetic resonance imaging images of the tumor lesions. A and B: primary tumor lesion 2 mo before the initial diagnosis: cystic lesion at the location between body and tail of the pancreas with a size of 43 mm × 38 mm × 30 mm; dilatation of the pancreatic duct of 13 mm (A: T2 axial, B: T2 coronal); C and D: Relapsed hepatic lesion in segment VIII in month 20 after initial diagnosis (C: T1 axial, D: T1 coronal).

prognosis. However, median survival of PC patients who have undergone surgical excision, regardless of stage or other prognostic factors, is 19 mo (interquartile range, 10–42 mo)<sup>[18]</sup>.

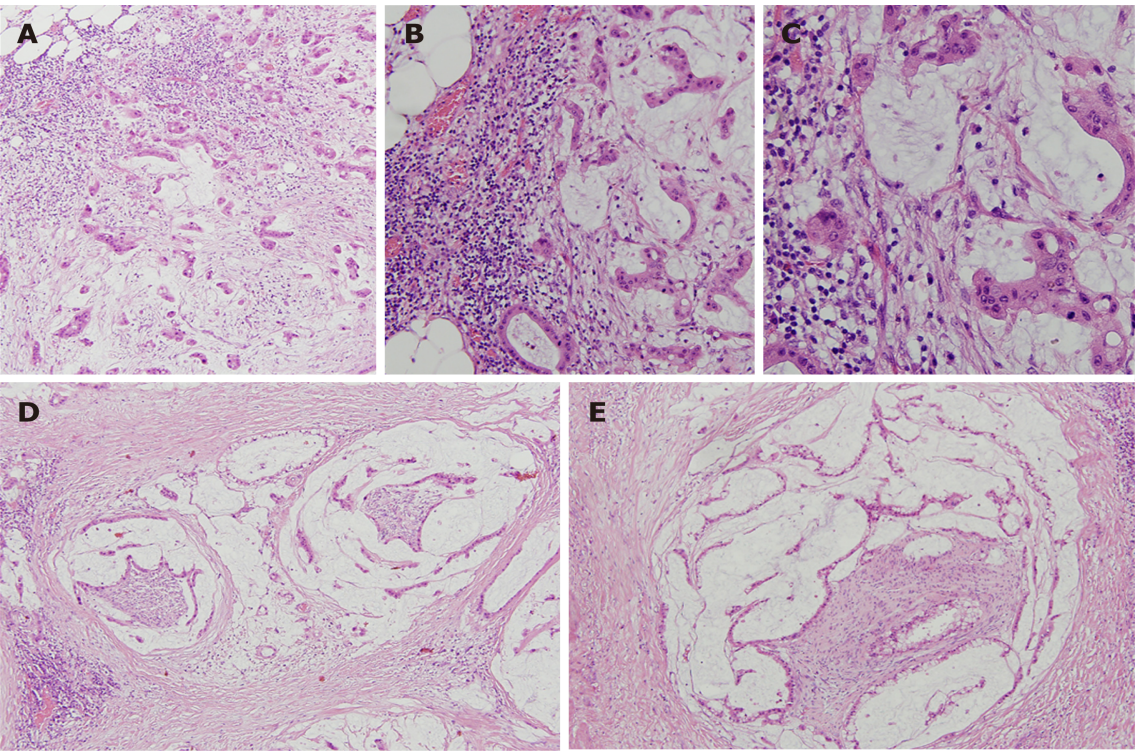
VAE was repeatedly investigated in PC and showed cytotoxic effects in cell lines and animal studies (PA-TU-8902, PAXF 736, PAXF 546)<sup>[19–21]</sup>. Tröger *et al*<sup>[22]</sup> found a survival benefit for aPC patients solely treated with VAE in a randomized controlled trial on overall survival. Similar results were seen by Axtner *et al*<sup>[23]</sup> in an integrative oncology registry. In a phase 1 study of VAE and Gemcitabine in patients with advanced solid tumors (including PC) it could be shown, that VAE did not affect the pharmacokinetics of Gemcitabine<sup>[24]</sup>. VAE in PC is currently further investigated in clinical trials (NCT02948309).

RFA acts through direct thermal cell damage but shows additional immune stimulatory properties as tumor antigens and a variety of cytokines are released from the treated tumor tissue; increased numbers of tumor-specific T cells have been detected in RFA-treated patients<sup>[10]</sup>. Combination therapy of RFA with different immune-stimulatory agents showed promising results<sup>[25,26]</sup>. The combination of VAE with radiation - which, like RFA, leads to cell damage and to a release of antigens - proved to be more effective than radiation alone in animal studies<sup>[27,28]</sup>. VAE shows several immune-stimulating properties like proliferation induction and increase of antigen presentation of dendritic cells, proliferation of CD4<sup>+</sup> T cells, increase of natural killer cell-mediated cytotoxicity, and release of cytokines<sup>[14]</sup>.

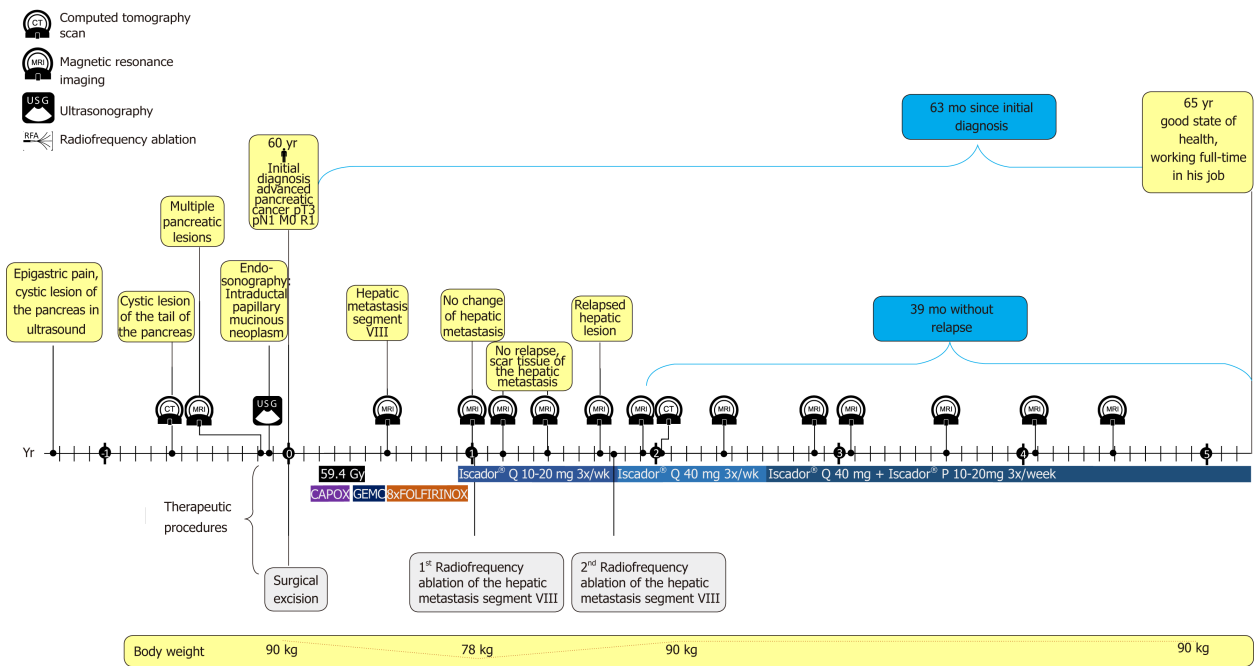
## CONCLUSION

We presume that VAE acted synergistically with RFA, leading to tumor control. Reports of combined treatment with RFA and VAE should be collected to determine whether further investigations in this area are worthwhile.





**Figure 2** Patient's tumor, haematoxylin and eosin stain. A: × 100; B: × 200; C : (× 400) invasive mucinous adenocarcinoma; D and E: (× 100) perineural invasion.



**Figure 3** Timeline of the patient with advanced pancreatic cancer. Gy: Radiotherapy in Gray; CAPOX: Capecitabine + oxaliplatin; GEMC: Gemcitabine; FOLFIRINOX: Leucovorin + fluorouracil + irinotecan + oxaliplatin.

ACKNOWLEDGEMENTS

We are thankful to Dr. Helmut Kiene (IFAEMM) for revision of the manuscript.

REFERENCES

- 1 **National Cancer Institute.** SEER Cancer Stat Facts: Pancreas Cancer [Internet]. 2018 [cited July 16, 2018]. Available from: URL: <https://seer.cancer.gov/statfacts/html/pancreas.html>
- 2 **Tabernero J**, Chiorean EG, Infante JR, Hingorani SR, Ganju V, Weekes C, Scheithauer W, Ramanathan RK, Goldstein D, Penenberg DN, Romano A, Ferrara S, Von Hoff DD. Prognostic factors of survival in a randomized phase III trial (MPACT) of weekly nab-paclitaxel plus gemcitabine versus gemcitabine alone in patients with metastatic pancreatic cancer. *Oncologist* 2015; **20**: 143-150 [PMID: [25582141](#) DOI: [10.1634/theoncologist.2014-0394](#)]
- 3 **Wolfgang CL**, Herman JM, Laheru DA, Klein AP, Erdek MA, Fishman EK, Hruban RH. Recent progress in pancreatic cancer. *CA Cancer J Clin* 2013; **63**: 318-348 [PMID: [23856911](#) DOI: [10.3322/caac.21190](#)]
- 4 **Crippa S**, Salvia R, Warshaw AL, Dominguez I, Bassi C, Falconi M, Thayer SP, Zamboni G, Lauwers GY, Mino-Kenudson M, Capelli P, Pederzoli P, Castillo CF. Mucinous cystic neoplasm of the pancreas is not an aggressive entity: lessons from 163 resected patients. *Ann Surg* 2008; **247**: 571-579 [PMID: [18362619](#) DOI: [10.1097/SLA.0b013e31811f4449](#)]
- 5 **Poultides GA**, Reddy S, Cameron JL, Hruban RH, Pawlik TM, Ahuja N, Jain A, Edil BH, Iacobuzio-Donahue CA, Schulick RD, Wolfgang CL. Histopathologic basis for the favorable survival after resection of intraductal papillary mucinous neoplasm-associated invasive adenocarcinoma of the pancreas. *Ann Surg* 2010; **251**: 470-476 [PMID: [20142731](#) DOI: [10.1097/SLA.0b013e3181cf8a19](#)]
- 6 **Ghaneh P**, Kleeff J, Halloran CM, Raraty M, Jackson R, Jones O, Palmer DH, Cox TF, Smith CJ, O'Reilly DA, Izbicki JR, Scarfe AG, Valle JW, McDonald AC, Carter R, Tebbutt NC, Goldstein D, Padbury R, Shannon J, Dervenis C, Glimelius B, Deakin M, Anthony A, Lerch MM, Mayerle J, Oláh A, Rawcliffe CL, Campbell F, Strobel O, Büchler MW, Neoptolemos JP; European Study Group for Pancreatic Cancer. The Impact of Positive Resection Margins on Survival and Recurrence Following Resection and Adjuvant Chemotherapy for Pancreatic Ductal Adenocarcinoma. *Ann Surg* 2019; **269**: 520-529 [PMID: [29068800](#) DOI: [10.1097/SLA.0000000000002557](#)]
- 7 **Ducruex M**, Cuhna AS, Caramella C, Hollebecque A, Burtin P, Goéré D, Seufferlein T, Haustermans K, Van Laethem JL, Conroy T, Arnold D; ESMO Guidelines Committee. Cancer of the pancreas: ESMO Clinical Practice Guidelines for diagnosis, treatment and follow-up. *Ann Oncol* 2015; **26** Suppl 5: v56-v68 [PMID: [26314780](#) DOI: [10.1093/annonc/mdv295](#)]
- 8 **Hua YQ**, Wang P, Zhu XY, Shen YH, Wang K, Shi WD, Lin JH, Meng ZQ, Chen Z, Chen H. Radiofrequency ablation for hepatic oligometastatic pancreatic cancer: An analysis of safety and efficacy. *Pancreatol* 2017; **17**: 967-973 [PMID: [29129384](#) DOI: [10.1016/j.pan.2017.08.072](#)]
- 9 **Pandya GJ**, Shelat VG. Radiofrequency ablation of pancreatic ductal adenocarcinoma: The past, the present and the future. *World J Gastrointest Oncol* 2015; **7**: 6-11 [PMID: [25685272](#) DOI: [10.4251/wjgo.v7.i2.6](#)]
- 10 **Chu KF**, Dupuy DE. Thermal ablation of tumours: biological mechanisms and advances in therapy. *Nat Rev Cancer* 2014; **14**: 199-208 [PMID: [24561446](#) DOI: [10.1038/nrc3672](#)]
- 11 **Beztsinna N**, de Matos MBC, Walther J, Heyder C, Hildebrandt E, Lenewit G, Mastrobattista E, Kok RJ. Quantitative analysis of receptor-mediated uptake and pro-apoptotic activity of mistletoe lectin-1 by high content imaging. *Sci Rep* 2018; **8**: 2768 [PMID: [29426932](#) DOI: [10.1038/s41598-018-20915-y](#)]
- 12 **Podlech O**, Harter PN, Mittelbronn M, Pöschel S, Naumann U. Fermented mistletoe extract as a multimodal antitumoral agent in gliomas. *Evid Based Complement Alternat Med* 2012; **2012**: 501796 [PMID: [23133496](#) DOI: [10.1155/2012/501796](#)]
- 13 **Elluru SR**, Duong Van Huyen JP, Delignat S, Prost F, Heudes D, Kazatchkine MD, Friboulet A, Kaveri SV. Antiangiogenic properties of viscum album extracts are associated with endothelial cytotoxicity. *Anticancer Res* 2009; **29**: 2945-2950 [PMID: [19661299](#)]
- 14 **Singh BN**, Saha C, Galun D, Upreti DK, Bayry J, Kaveri SV. European Viscum album: a potent phytotherapeutic agent with multifarious phytochemicals, pharmacological properties and clinical evidence. *RSC Adv* 2016 [DOI: [10.1039/C5RA27381A](#)]
- 15 **Kienle GS**, Kiene H. Complementary cancer therapy: a systematic review of prospective clinical trials on anthroposophic mistletoe extracts. *Eur J Med Res* 2007; **12**: 103-119 [PMID: [17507307](#)]
- 16 **Kienle GS**, Grugel R, Kiene H. Safety of higher dosages of Viscum album L. in animals and humans--systematic review of immune changes and safety parameters. *BMC Complement Altern Med* 2011; **11**: 72 [PMID: [21871125](#) DOI: [10.1186/1472-6882-11-72](#)]
- 17 **Chen JW**, Bhandari M, Astill DS, Wilson TG, Kow L, Brooke-Smith M, Toouli J, Padbury RT. Predicting patient survival after pancreaticoduodenectomy for malignancy: histopathological criteria based on perineural infiltration and lymphovascular invasion. *HPB (Oxford)* 2010; **12**: 101-108 [PMID: [20495653](#) DOI: [10.1111/j.1477-2574.2009.00140.x](#)]
- 18 **He J**, Ahuja N, Makary MA, Cameron JL, Eckhauser FE, Choti MA, Hruban RH, Pawlik TM, Wolfgang CL. 2564 resected periampullary adenocarcinomas at a single institution: trends over three decades. *HPB (Oxford)* 2014; **16**: 83-90 [PMID: [23472829](#) DOI: [10.1111/hpb.12078](#)]
- 19 **Weissenstein U**, Kunz M, Urech K, Baumgartner S. Interaction of standardized mistletoe (Viscum album) extracts with chemotherapeutic drugs regarding cytostatic and cytotoxic effects in vitro. *BMC Complement Altern Med* 2014; **14**: 6 [PMID: [24397864](#) DOI: [10.1186/1472-6882-14-6](#)]
- 20 **Burger AM**, Mengs U, Schüler JB, Fiebig HH. Antiproliferative activity of an aqueous mistletoe extract in human tumor cell lines and xenografts in vitro. *Arzneimittelforschung* 2001; **51**: 748-757 [PMID: [11642008](#)]
- 21 **Rostock M**, Huber R, Greiner T, Fritz P, Scheer R, Schueler J, Fiebig HH. Anticancer activity of a lectin-rich mistletoe extract injected intratumorally into human pancreatic cancer xenografts. *Anticancer Res* 2005; **25**: 1969-1975 [PMID: [16158932](#)]
- 22 **Tröger W**, Galun D, Reif M, Schumann A, Stanković N, Miličević M. Viscum album [L.] extract therapy in patients with locally advanced or metastatic pancreatic cancer: a randomised clinical trial on overall survival. *Eur J Cancer* 2013; **49**: 3788-3797 [PMID: [23890767](#) DOI: [10.1016/j.ejca.2013.06.043](#)]
- 23 **Axtner J**, Steele M, Kröz M, Spahn G, Matthes H, Schaf F. Health services research of integrative oncology in palliative care of patients with advanced pancreatic cancer. *BMC Cancer* 2016; **16**: 579 [PMID: [27485618](#) DOI: [10.1186/s12885-016-2594-5](#)]
- 24 **Mansky PJ**, Wallerstedt DB, Sannes TS, Stagl J, Johnson LL, Blackman MR, Grem JL, Swain SM, Monahan BP. NCCAM/NCI Phase I Study of Mistletoe Extract and Gemcitabine in Patients with Advanced Solid Tumors. *Evid Based Complement Alternat Med* 2013; **2013**: 964592 [PMID: [24285980](#) DOI: [10.1155/2013/964592](#)]
- 25 **Gameiro SR**, Higgins JP, Dreher MR, Woods DL, Reddy G, Wood BJ, Guha C, Hodge JW. Combination therapy with local radiofrequency ablation and systemic vaccine enhances antitumor immunity and

- mediates local and distal tumor regression. *PLoS One* 2013; **8**: e70417 [PMID: 23894654 DOI: 10.1371/journal.pone.0070417]
- 26 **Li G**, Staveley-O'Carroll KF, Kimchi ET. Potential of Radiofrequency Ablation in Combination with Immunotherapy in the Treatment of Hepatocellular Carcinoma. *J Clin Trials* 2016; **6** [PMID: 28042519 DOI: 10.4172/2167-0870.1000257]
- 27 **Jurin M**, Zarković N, Hrzenjak M, Ilić Z. Antitumorous and immunomodulatory effects of the Viscum album L. preparation Isorel. *Oncology* 1993; **50**: 393-398 [PMID: 8233280 DOI: 10.1159/000227217]
- 28 **von Bodungen U**, Ruess K, Reif M, Biegel U. Kombinierte Anwendung von Strahlentherapie und adjuvanter Therapie mit einem Mistelextrakt (Viscum album L.) zur Behandlung des oralen malignen Melanoms beim Hund: Eine retrospektive Studie. *Complement Med Res* 2017; **24**: 358-363 [PMID: 29241194 DOI: 10.1159/000485743]





Published By Baishideng Publishing Group Inc  
7041 Koll Center Parkway, Suite 160, Pleasanton, CA 94566, USA  
Telephone: +1-925-2238242  
Fax: +1-925-2238243  
E-mail: [bpgoffice@wjgnet.com](mailto:bpgoffice@wjgnet.com)  
Help Desk: <http://www.f6publishing.com/helpdesk>  
<http://www.wjgnet.com>

