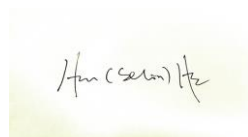


## Certificate from *Medjaden Bioscience Limited*

Dear Sir or Madam:

This document certifies that the manuscript, *Validated preoperative CT risk estimation for postoperative hepatocellular carcinoma recurrence*, was edited for proper English language, grammar, punctuation, spelling, and overall style by highly qualified native English speaking and professional scientific editors at *Medjaden Bioscience Limited* on 21<sup>st</sup> Jul. 2017. Neither the research content nor the authors' intentions were altered in any way during the editing process.

Yours sincerely,



(Ms.) Hua (Selin) He

for *Medjaden*

*Medjaden Bioscience Limited*

General Office

Room 2001-4, China Insurance Group Building,

141 Des Voeux Road, Central, Hong Kong

Tel: +852 81350971; Fax: +852 81350972

Email: medjaden@gmail.com

Website: www.medjaden.com

### **Information about *Medjaden Bioscience Limited*:**

*Medjaden* is an emerging editing company that provides professional services for laboratory researchers, postgraduates, and clinical doctors. Our mission is to help our clients initiate, maximize and accelerate the production of articles from their research work. The company employs experienced medical statisticians, writers, and editors drawn from both Chinese and English backgrounds worldwide, who strive to ensure that every edited article is published in an English journal, preferably one that is included in The Institute for Scientific Information (ISI) Citation Database, the Science Citation Index (SCI) Expanded, Index Medicus (IM), Medline, PubMed, EMBASE/Excerpta Medica, and other scientific resources.

The revised manuscript is attached for your reference.

**Validated preoperative CT risk estimation for postoperative hepatocellular carcinoma recurrence**

Wei Zhang, Shao-lv Lai, Jie Chen, Dong Xie, Fei-xiang Wu, Guan-qiao Jin and Dan-ke Su

**Wei Zhang, Shao-lv Lai, Dong Xie, Guan-qiao Jin, Dan-ke Su**, Departments of Radiology, Affiliated Tumor Hospital of Guangxi Medical University, Nanning530021, Guangxi Zhuang Autonomous Region, China.

**Jie Chen, Fei-xiang Wu**, Hepatobiliary Surgery, Affiliated Tumor Hospital of Guangxi Medical University, Nanning530021, Guangxi Zhuang Autonomous Region, China.

**Author contributions:** Wei Zhang, Shao-lv Lai, Jie Chen and Dong Xie contributed equally to this work; Dan-ke Su designed the research; Wei Zhang wrote the manuscript; Wei Zhang, Shao-lv Lai, Jie Chen and Dong Xie collected the data; Fei-xiang Wu and Guan-qiao Jin recorded the data; Wei Zhang, Shao-lv Lai, Jie Chen and Dong Xie performed the research; Wei Zhang analyzed the data; Dan-ke Su modified the manuscript; and All authors gave final approval of this submission.

**Supported by** Innovation Project of Guangxi Graduate Education, No. YCBZ2017042; Guangxi Science and Technology Department research programs, No. 1355005-3-1; Overseas exchange program for excellent Ph.D. student in 2017.

**Institutional review board statement:** The study was reviewed and approved by the Affiliated Tumor Hospital of Guangxi Medical University Institutional Review Board.

**Informed consent statement:** All study participants, or their legal guardian, provided informed written consent prior to study enrollment.

**Conflict-of-interest statement:** The authors declared that there is no conflict of interest related to this study.

**Data sharing statement:** No additional data are available.

**Correspondence to: Dr. Dan-ke Su, Professor,** Radiology Department, Affiliated Tumor Hospital of Guangxi Medical University, 71 Hedi Road, Nanning 530021, Guangxi Zhuang Autonomous Region, China. [sudanke2012@163.com](mailto:sudanke2012@163.com)

**Telephone:** +86-771-5316832

**Fax:** +86-771-5316832

**Running title:** Preoperative prediction of HCC recurrence

## Abstract

### AIM

To develop and validate a risk estimation of tumor recurrence following curative resection of operable hepatocellular carcinoma (HCC).

### METHODS

Data for 128 patients with operable HCC (based on Barcelona Clinic Liver Cancer imaging criteria) who underwent preoperative computed tomography (CT) evaluation at our hospital from May 1, 2013 through May 30, 2014 were included in this study.

Follow-up data were obtained from hospital medical records. Follow-up data through May 30, 2016 were used to retrospectively analyze preoperative multiphasic CT findings, surgical histopathology results, and serum  $\alpha$ -fetoprotein and thymidine kinase-1 levels. The chi-square test, independent t-test, and Mann-Whitney U test were used to analyze data. A *P* value of less than .05 was considered statistically significant.

### RESULTS

During the follow-up period, 38 of 128 patients (29.7%) had a postoperative HCC recurrence. Microvascular invasion (MVI) was associated with HCC recurrence ( $\chi^2=13.253$ ,  $P < 0.001$ ). Despite postoperative antiviral therapy and chemotherapy, 22 of 44 patients with MVI experienced recurrence after surgical resection. The presence of MVI was 57.9% sensitive, 75.6% specific, and 70.3% accurate in predicting postoperative recurrence. Of 84 tumors without MVI, univariate analysis confirmed that tumor margins, tumor margin grade, and tumor capsule detection on multiphasic CT were associated with HCC recurrence ( $P < 0.05$ ). Univariate analyses showed no difference between groups with respect to hepatic capsular invasion, Ki-67 proliferation marker value, Edmondson-Steiner grade, largest tumor diameter, necrosis, arterial phase enhanced ratio, portovenous phase enhanced ratio, peritumoral enhancement, or serum

alpha fetoprotein level.

## CONCLUSION

Non-smooth tumor margins, incomplete tumor capsules, and missing tumor capsules were correlated with postoperative HCC recurrence. HCC recurrence following curative resection may be predicted using CT.

**Key words:** Hepatocellular carcinoma; Microvascular invasion; CT; Recurrence; Tumor margin; Tumor capsule

**Core tip:** We discuss risk estimation for recurrence following curative resection of operable hepatocellular carcinoma that meets Barcelona Clinic Liver Cancer imaging criteria. Preoperative multiphasic CT findings, including non-smooth tumor margins, incomplete tumor capsule, and missing tumor capsule, can predict HCC recurrence following curative resection. Treatment should include wide margins during curative resection, followed by antiviral therapy and chemotherapy.

**Citation:** Zhang W, Lai SL, Chen J, Xie D, Wu FX, Jin GQ, Su DK. Validated preoperative CT risk estimation for postoperative hepatocellular carcinoma recurrence

## INTRODUCTION

Hepatocellular carcinoma (HCC) is the fifth most common malignancy and the third most common cause of cancer-related death worldwide [1-3]. Surgical resection and liver transplantation (LT) are potentially curative treatment options for patients with HCC[4]. However, the 5-year HCC recurrence rate may be as high as 70% [5]. Recent studies show that tumor size and number[6], microvascular invasion (MVI) [5, 7-9], and  $\alpha$ -fetoprotein (AFP) levels [10, 11] are associated with recurrence following surgical resection. Although many potential risk factors for HCC postoperative recurrence have been described, a reliable preoperative method to estimate this risk has not been established.

Kanai *et al* [12] first described nodular HCC sub-classification based on microscopic, clinical, and prognostic features: single nodular type, single nodular type with extra-nodular growth, and contiguous multinodular type. Studies have shown that non-smooth tumor margins are associated with increased MVI [13-16]. Although CT examination is part of the standard of care for HCC evaluation, no study has demonstrated the validity of preoperative CT assessment to predict postoperative recurrence of solitary hepatocellular carcinoma.

Thymidine kinase 1 (TK1), a DNA synthesis enzyme, is an important serum proliferation marker that correlates with clinical stage and is an independent prognostic factor for recurrence-free survival in HCC [17-20]. However, to our knowledge, there are no reports about serum TK1 levels and postoperative HCC recurrence.

In this study, we retrospectively assessed whether preoperative CT findings could predict postoperative HCC recurrence. We specifically evaluated largest tumor diameter, tumor margins, tumor capsule, necrosis, peritumoral enhancement, tumor enhanced ratio, and hepatic capsular invasion. Furthermore, we assessed whether MVI, serum AFP, and serum TK1 were correlated with postoperative recurrence of solitary HCC.

## **METHODS**

### **Patients**

This retrospective study included 128 patients (105 males and 23 females) aged 24 to 79 years (mean, 47.7 years) with operable HCC based on Barcelona Clinic Liver Cancer imaging criteria, who underwent preoperative CT evaluation at our hospital from May 1, 2013 through May 30, 2014. Follow-up data were obtained from hospital medical records. HCC recurrence was defined as a pathologic or radiologic diagnosis of recurrent HCC during the follow-up period that ended on May 30, 2016. All patients in this study (a) had no cancer-related treatment or liver biopsy prior to CT imaging; (b) underwent partial hepatectomy and had HCC diagnosis confirmed by histopathology; (c) had no macrovascular invasion or metastasis on CT imaging; (d) had livers with a Child-Pugh classification of A or B. This study was approved by our hospital institutional review board and all patients provided written informed consent.

### **CT imaging protocol**

Hepatic CT images were performed using a 64-MDCT scanner (SOMATOM Sensation 64, Siemens, Forchheim, Germany) with z-axis modulation, a spiral pitch of 1, a 5 mm section thickness, a 2 mm reconstruction gap, a field of view of 311 mm, 120 kVp, 230 mA, and a standard reconstruction algorithm. Nonionic contrast medium (300 mg I/mL Iopromide) was administered at an injection rate of 3 mL/s for a total dose of 100 mL. For the hepatic arterial and portovenous phases, scanning was begun approximately 25 and 60 seconds after contrast media injection, respectively. Equilibrium phase images were acquired approximately 180 seconds after contrast media injection. The scanning range was the whole-liver zone while patients held their breath. Coronary and sagittal images were reconstructed with 5 mm section thickness.

### **Image evaluation**

Tumor margins on the liver map (ie, transverse, coronary, and sagittal planes) were defined as three subtypes: smooth margin, non-smooth margin focal extranodular, and non-smooth margin multinodular, based on previous reports<sup>[12-16, 21, 22]</sup>. The tumor margins were categorized into one of three grades: Grade 0 (smooth margin), Grade 1 (focal extranodular type), and Grade 2 (multinodular type). The tumor capsule was defined as a linear and enhanced structure surrounding the tumor detected by equilibrium phase CT imaging. Tumor capsules were categorized into three groups: complete tumor encapsulation (Grade 0), incomplete tumor encapsulation (Grade 1), no tumor encapsulation (Grade 2). Negative or positive peritumoral enhancement was determined by multi-phase CT imaging. Positive peritumoral enhancement was defined in comparison to liver parenchyma as a hyperdense area proximal to the tumor border during arterial phase imaging that changed to an isodense area during equilibrium phase imaging. The tumor enhanced ratio was calculated:

$$\text{Tumor enhanced ratio} = (\text{CT}_{\text{enhanced}} - \text{CT}_{\text{unenhanced}}) / \text{CT}_{\text{unenhanced}}$$

All CT findings were reviewed by two radiologists experienced in liver CT evaluation: Shao-lv Lai (22 years' experience) and Dong Xie (21 years' experience). In the case of disagreements over CT findings, a third radiologist helped resolve discrepancies to achieve consensus.

### **Serum samples and histopathologic analysis**

The serum TK1 assay was performed using a commercial kit, based on an enhanced chemiluminescence dot blot assay. Serum AFP detection was carried out using enzyme immunoassay. Ki67 expression, hepatic capsular invasion, and MVI were confirmed by immunohistochemistry. The Edmondson-Steiner (E-S) grade was determined using the WHO Liver Cancer Study Group guidelines <sup>[23]</sup>.

### **Data analysis**

Statistical analysis was performed using SPSS version 16.0 statistical software (SPSS, Chicago, Illinois). An independent t-test was used to compare recurrence and non-recurrence groups with respect to largest tumor diameter, arterial phase enhanced ratio, portovenous phase enhanced ratio, serum AFP, serum TK1, and Ki67. Receiver operating characteristic curve analyses were used to determine the optimal cut-off value and diagnostic performance for  $P < 0.05$ . The chi-square test was used to compare tumor margins, necrosis, peritumoral enhancement, MVI, and hepatic capsular invasion between groups. The tumor margin grade, E-S grade, and tumor capsule were analyzed using the Mann-Whitney U test. A  $P$  value of less than 0.05 was considered statistically significant.

## RESULTS

Quantitative and qualitative findings are summarized in Table 1. MVI was higher in the recurrence group (22 of 38 patients) compared to the non-recurrence group (22 of 90 patients) ( $\chi^2 = 13.253$ ,  $P < 0.001$ ). Despite antiviral therapy and chemotherapy during follow-up, 22 of 44 patients with MVI experienced recurrence after surgical resection. The presence of MVI was 57.9% sensitive, 75.6% specific, and 70.3% accurate in predicting postoperative recurrence.

Of 84 recurrences without MVI, univariate analyses showed no difference between groups with respect to hepatic capsular invasion ( $\chi^2 = 1.691$ ,  $P = 0.193$ ), Ki67 value ( $P = 0.686$ ), E-S grade ( $Z = -0.460$ ,  $P = 0.646$ ), largest tumor diameter ( $P = 0.366$ ), necrosis ( $\chi^2 = 0.412$ ,  $P = 0.521$ ), arterial phase enhanced ratio ( $P = 0.725$ ), portovenous phase enhanced ratio ( $P = 0.685$ ), peritumoral enhancement ( $P = 0.240$ ), or serum AFP level ( $P = 0.882$ ). In 27 of 84 recurrences without MVI, serum TK1 did not differ between groups ( $P = 0.377$ ). Univariate analyses showed that non-smooth tumor margins ( $\chi^2 = 5.042$ ,  $P = 0.025$ ), tumor margin grade ( $Z = -2.355$ ,  $P = 0.019$ ), and absence of tumor capsule on CT ( $Z = -2.279$ ,  $P = 0.023$ ) were correlated with tumor recurrence (Figure 1 and 2).

## DISCUSSION

Surgical resection of HCC is associated with high rates of tumor recurrence [5]. A reliable and validated prognostic method to estimate individual HCC recurrence risk would help guide future treatment strategies. Factors commonly associated with high risk for postoperative HCC recurrence include tumor vascular invasion and poorly differentiated tumor grade<sup>[24]</sup>. In this study, however, E-S grade was not associated with tumor recurrence. We did confirm, however, that MVI may be a powerful independent prognostic factor for postoperative recurrence and metastasis [5, 7, 14, 25-27]. In this retrospective study, we further validated MVI as an independent prognostic factor correlated with HCC recurrence. This study showed a 50% HCC recurrence rate following surgical resection for tumors with MVI, despite antiviral therapy and chemotherapy. Thus, the possibility of recurrence for HCC with MVI is substantial. However, MVI can rarely be confirmed preoperatively and, consequently, it is difficult to choose an appropriate procedure (eg, wide resection margins) to prevent HCC recurrence<sup>[28]</sup>. Thus, it is important to identify preoperative imaging markers that could predict HCC recurrence.

It has been reported that conventional CT could be used to reconstruct global HCC gene expression patterns<sup>[29]</sup>. When Zhou et al<sup>[30]</sup> investigated the correlation between CT-based radiomics signature and early HCC recurrence, they identified internal arteries and necrosis as independent risk factors. Their results, which were similar to those of previous studies, [5, 29] led to their hypothesis that internal arteries may be correlated with MVI. The finding that necrosis is a marker of early HCC recurrence,<sup>[30]</sup> however, is inconsistent with our study findings. We suspect that different follow-up times (one year in their study vs two years in ours), was responsible for this difference.

In this study, we further investigated whether preoperative CT findings correlate

with HCC recurrence after surgical resection. Our finding that non-smooth tumor margins on CT could predict tumor recurrence has not been evaluated in previous studies. However, a previous study did show that non-smooth tumor margins on CT were predictive of MVI, and that MVI is an independent predictor of poor outcomes following surgical resection [13]. In our stratified analysis of tumors without MVI, tumor margins were significantly associated with postoperative recurrence during the follow-up period. This finding may be related to HCC multi-centricity being an important independent prognostic factor [31], and tumor aggressiveness should be considered [32]. We believe that non-smooth tumor margins can be considered an independent predictor of HCC recurrence.

Adachi et al [33] reported that vessels of the fibrous liver capsule were often invaded by tumor cells and that complete liver capsule fibrosis was a predictor of portal venous invasion. However, complete liver capsule fibrosis has been reported as a favorable prognostic marker because it can prevent HCC invasion into adjacent liver parenchyma[13]. Our results also showed that complete tumor capsules were associated with a low risk of postoperative recurrence. Peritumoral enhancement on magnetic resonance imaging (MRI) has been associated with a high risk of MVI [34]. In our study, peritumoral enhancement on CT was not related to HCC recurrence. The discrepancy in findings may be due to differences in imaging modalities used in various studies. Lu et al [35] reported that, when HCC was larger than 3 cm in diameter, the tumor tended to be more aggressive and was associated with a poor prognosis [36]. However, large tumor diameter was not a significant risk factor for postoperative recurrence in our study. At present, it is clear that HCC nodule size is not the only prognostic factor for recurrence [32]. Additionally, the relationship between postoperative HCC recurrence and AFP level remains controversial [5, 10, 11].

This study has two limitations. One potential limitation is the use of CT instead of MRI. Although CT is commonly used for HCC evaluation, MRI may provide additional information. A second limitation is the relatively small number of postoperative recurrences, except among those with preoperative evidence of MVI on CT. However, we further analyzed all cases and found similar results for the MVI-positive and MVI-negative groups. Thus, the study sample may reflect true population postoperative recurrences.

In conclusion, evaluation of patients with HCC should include preoperative CT findings of non-smooth tumor margins, incomplete tumor capsules, and missing tumor capsules, which indicate possible postoperative recurrence. The treatment plan should include wide resection margins during curative resection, followed by antiviral therapy and chemotherapy.

## REFERENCES

- 1 Wang T, Liu M, Zheng SJ, Bian DD, Zhang JY, Yao J, Zheng QF, Shi AM, Li WH, Li L, Chen Y, Wang JH, Duan ZP, Dong L. Tumor-associated autoantibodies are useful biomarkers in immunodiagnosis of alpha-fetoprotein-negative hepatocellular carcinoma. *World journal of gastroenterology* 2017; **23**(19): 3496-3504 [PMID: 28596685 PMCID: 5442085 DOI: 10.3748/wjg.v23.i19.3496]
- 2 McGlynn KA, Petrick JL, London WT. Global epidemiology of hepatocellular carcinoma: an emphasis on demographic and regional variability. *Clinics in liver disease* 2015; **19**(2): 223-238 [PMID: 25921660 PMCID: 4712629 DOI: 10.1016/j.cld.2015.01.001]
- 3 Hao Y, Numata K, Ishii T, Fukuda H, Maeda S, Nakano M, Tanaka K. Rate of local tumor progression following radiofrequency ablation of pathologically early hepatocellular carcinoma. *World journal of gastroenterology* 2017; **23**(17): 3111-3121 [PMID: 28533668 PMCID: 5423048 DOI: 10.3748/wjg.v23.i17.3111]
- 4 Forner A, Llovet JM, Bruix J. Hepatocellular carcinoma. *Lancet* 2012; **379**(9822): 1245-1255 [PMID: 22353262 DOI: 10.1016/S0140-6736(11)61347-0]
- 5 Banerjee S, Wang DS, Kim HJ, Sirlin CB, Chan MG, Korn RL, Rutman AM, Siripongsakun S, Lu D, Imanbayev G, Kuo MD. A computed tomography radiogenomic biomarker predicts microvascular invasion and clinical outcomes in hepatocellular carcinoma. *Hepatology* 2015; **62**(3): 792-800 [PMID: 25930992 PMCID: 4654334 DOI: 10.1002/hep.27877]
- 6 Mazzaferro V, Llovet JM, Miceli R, Bhoori S, Schiavo M, Mariani L, Camerini T, Roayaie S, Schwartz ME, Grazi GL, Adam R, Neuhaus P, Salizzoni M, Bruix J, Forner A, De Carlis L, Cillo U, Burroughs AK, Troisi R, Rossi M, Gerunda GE, Lerut J, Belghiti J, Boin I, Gugenheim J, Rochling F, Van Hoek B, Majno P, Metroticket Investigator Study G. Predicting survival after liver transplantation in patients with hepatocellular carcinoma beyond the Milan criteria: a retrospective, exploratory analysis. *The Lancet Oncology* 2009; **10**(1): 35-43 [PMID: 19058754 DOI: 10.1016/S1470-2045(08)70284-5]
- 7 Yu YQ, Wang L, Jin Y, Zhou JL, Geng YH, Jin X, Zhang XX, Yang JJ, Qian CM, Zhou DE, Liu DR, Peng SY, Luo Y, Zheng L, Li JT. Identification of serologic biomarkers for predicting microvascular invasion in hepatocellular carcinoma. *Oncotarget* 2016; **7**(13): 16362-16371 [PMID: 26918350 PMCID: 4941320 DOI: 10.18632/oncotarget.7649]
- 8 Agopian VG, Harlander-Locke M, Zarrinpar A, Kaldas FM, Farmer DG, Yersiz H, Finn RS, Tong M, Hiatt JR, Busuttil RW. A novel prognostic nomogram accurately predicts hepatocellular carcinoma recurrence after liver transplantation: analysis of 865 consecutive liver transplant recipients. *Journal of the American College of Surgeons* 2015; **220**(4): 416-427 [PMID: 25690672 DOI: 10.1016/j.jamcollsurg.2014.12.025]
- 9 Cong WM, Bu H, Chen J, Dong H, Zhu YY, Feng LH, Chen J, Committee G. Practice guidelines for the pathological diagnosis of primary liver cancer: 2015 update. *World journal of gastroenterology* 2016; **22**(42): 9279-9287 [PMID: 27895416 PMCID: 5107692 DOI: 10.3748/wjg.v22.i42.9279]
- 10 Hameed B, Mehta N, Sapisochin G, Roberts JP, Yao FY. Alpha-fetoprotein level > 1000 ng/mL as an exclusion criterion for liver transplantation in patients with hepatocellular carcinoma meeting the Milan criteria. *Liver transplantation : official publication of the American Association for the Study of Liver Diseases and the International Liver Transplantation Society* 2014; **20**(8): 945-951 [PMID: 24797281 PMCID: 4807739 DOI: 10.1002/lt.23904]

- 11 Berry K, Ioannou GN. Serum alpha-fetoprotein level independently predicts posttransplant survival in patients with hepatocellular carcinoma. *Liver transplantation : official publication of the American Association for the Study of Liver Diseases and the International Liver Transplantation Society* 2013; **19**(6): 634-645 [PMID: 23536495 DOI: 10.1002/lt.23652]
- 12 Kanai T, Hirohashi S, Upton MP, Noguchi M, Kishi K, Makuuchi M, Yamasaki S, Hasegawa H, Takayasu K, Moriyama N, et al. Pathology of small hepatocellular carcinoma. A proposal for a new gross classification. *Cancer* 1987; **60**(4): 810-819 [PMID: 2439190]
- 13 Chou CT, Chen RC, Lin WC, Ko CJ, Chen CB, Chen YL. Prediction of microvascular invasion of hepatocellular carcinoma: preoperative CT and histopathologic correlation. *AJR American journal of roentgenology* 2014; **203**(3): W253-259 [PMID: 25148181 DOI: 10.2214/AJR.13.10595]
- 14 Sumie S, Kuromatsu R, Okuda K, Ando E, Takata A, Fukushima N, Watanabe Y, Kojiro M, Sata M. Microvascular invasion in patients with hepatocellular carcinoma and its predictable clinicopathological factors. *Annals of surgical oncology* 2008; **15**(5): 1375-1382 [PMID: 18324443 DOI: 10.1245/s10434-008-9846-9]
- 15 Nagano Y, Shimada H, Takeda K, Ueda M, Matsuo K, Tanaka K, Endo I, Kunisaki C, Togo S. Predictive factors of microvascular invasion in patients with hepatocellular carcinoma larger than 5 cm. *World journal of surgery* 2008; **32**(10): 2218-2222 [PMID: 18642045 DOI: 10.1007/s00268-008-9585-x]
- 16 Hui AM, Takayama T, Sano K, Kubota K, Akahane M, Ohtomo K, Makuuchi M. Predictive value of gross classification of hepatocellular carcinoma on recurrence and survival after hepatectomy. *Journal of hepatology* 2000; **33**(6): 975-979 [PMID: 11131461]
- 17 Nisman B, Appelbaum L, Yutkin V, Nechushtan H, Hubert A, Uziely B, Pode D, Peretz T. Serum Thymidine Kinase 1 Activity Following Nephrectomy for Renal Cell Carcinoma and Radiofrequency Ablation of Metastases to Lung and Liver. *Anticancer research* 2016; **36**(4): 1791-1797 [PMID: 27069161]
- 18 Liu Y, Ling Y, Qi Q, Tang Y, Xu J, Tong Z, Sheng G, Yang Q, Pan Y. Changes in serum thymidine kinase 1 levels during chemotherapy correlate with objective response in patients with advanced gastric cancer. *Experimental and therapeutic medicine* 2011; **2**(6): 1177-1181 [PMID: 22977640 PMCID: 3440839 DOI: 10.3892/etm.2011.338]
- 19 Nisman B, Allweis T, Kaduri L, Maly B, Gronowitz S, Hamburger T, Peretz T. Serum thymidine kinase 1 activity in breast cancer. *Cancer biomarkers : section A of Disease markers* 2010; **7**(2): 65-72 [PMID: 21178264 DOI: 10.3233/CBM-2010-0148]
- 20 Nisman B, Yutkin V, Nechushtan H, Gofrit ON, Peretz T, Gronowitz S, Pode D. Circulating tumor M2 pyruvate kinase and thymidine kinase 1 are potential predictors for disease recurrence in renal cell carcinoma after nephrectomy. *Urology* 2010; **76**(2): 513 e511-516 [PMID: 20573390 DOI: 10.1016/j.urology.2010.04.034]
- 21 Eguchi S, Takatsuki M, Hidaka M, Soyama A, Tomonaga T, Muraoka I, Kanematsu T. Predictor for histological microvascular invasion of hepatocellular carcinoma: a lesson from 229 consecutive cases of curative liver resection. *World journal of surgery* 2010; **34**(5): 1034-1038 [PMID: 20127241 DOI: 10.1007/s00268-010-0424-5]
- 22 Nakashima Y, Nakashima O, Tanaka M, Okuda K, Nakashima M, Kojiro M. Portal vein invasion and intrahepatic micrometastasis in small hepatocellular carcinoma by gross type. *Hepatology research : the official journal of the Japan Society of Hepatology* 2003; **26**(2): 142-147 [PMID: 12809942]

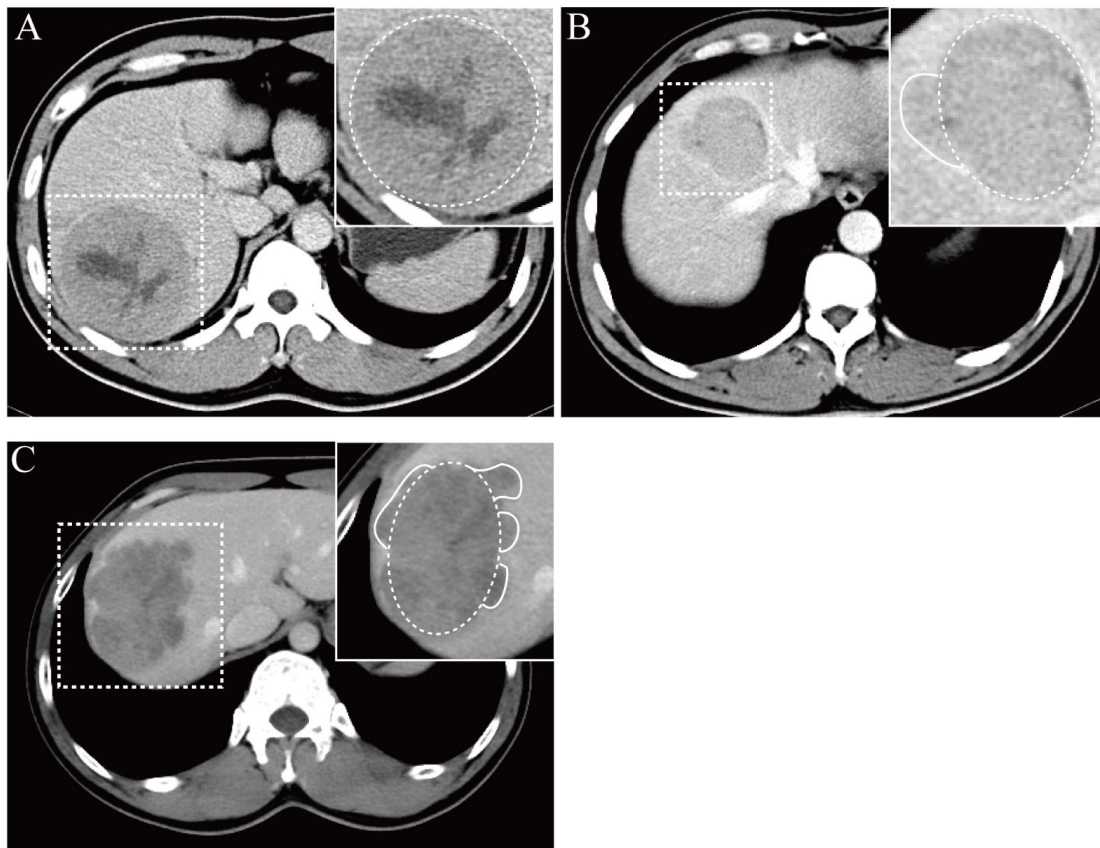
- 23 Edmondson HA, Steiner PE. Primary carcinoma of the liver: a study of 100 cases among 48,900 necropsies. *Cancer* 1954; **7**(3): 462-503 [PMID: 13160935]
- 24 Mehta N, Heimbach J, Harnois DM, Sapisochin G, Dodge JL, Lee D, Burns JM, Sanchez W, Greig PD, Grant DR, Roberts JP, Yao FY. Validation of a Risk Estimation of Tumor Recurrence After Transplant (RETREAT) Score for Hepatocellular Carcinoma Recurrence After Liver Transplant. *JAMA oncology* 2017; **3**(4): 493-500 [PMID: 27838698 PMCID: 5395317 DOI: 10.1001/jamaoncol.2016.5116]
- 25 Lim KC, Chow PK, Allen JC, Chia GS, Lim M, Cheow PC, Chung AY, Ooi LL, Tan SB. Microvascular invasion is a better predictor of tumor recurrence and overall survival following surgical resection for hepatocellular carcinoma compared to the Milan criteria. *Annals of surgery* 2011; **254**(1): 108-113 [PMID: 21527845 DOI: 10.1097/SLA.0b013e31821ad884]
- 26 Kaibori M, Ishizaki M, Matsui K, Kwon AH. Predictors of microvascular invasion before hepatectomy for hepatocellular carcinoma. *Journal of surgical oncology* 2010; **102**(5): 462-468 [PMID: 20872949 DOI: 10.1002/jso.21631]
- 27 Imamura H, Matsuyama Y, Tanaka E, Ohkubo T, Hasegawa K, Miyagawa S, Sugawara Y, Minagawa M, Takayama T, Kawasaki S, Makuuchi M. Risk factors contributing to early and late phase intrahepatic recurrence of hepatocellular carcinoma after hepatectomy. *Journal of hepatology* 2003; **38**(2): 200-207 [PMID: 12547409]
- 28 Hirokawa F, Hayashi M, Miyamoto Y, Asakuma M, Shimizu T, Komeda K, Inoue Y, Uchiyama K. Outcomes and predictors of microvascular invasion of solitary hepatocellular carcinoma. *Hepatology research : the official journal of the Japan Society of Hepatology* 2014; **44**(8): 846-853 [PMID: 23834279 DOI: 10.1111/hepr.12196]
- 29 Segal E, Sirlin CB, Ooi C, Adler AS, Gollub J, Chen X, Chan BK, Matcuk GR, Barry CT, Chang HY, Kuo MD. Decoding global gene expression programs in liver cancer by noninvasive imaging. *Nature biotechnology* 2007; **25**(6): 675-680 [PMID: 17515910 DOI: 10.1038/nbt1306]
- 30 Zhou Y, He L, Huang Y, Chen S, Wu P, Ye W, Liu Z, Liang C. CT-based radiomics signature: a potential biomarker for preoperative prediction of early recurrence in hepatocellular carcinoma. *Abdominal radiology* 2017; **42**(6): 1695-1704 [PMID: 28180924 DOI: 10.1007/s00261-017-1072-0]
- 31 Shimada M, Hamatsu T, Yamashita Y, Rikimaru T, Taguchi K, Utsunomiya T, Shirabe K, Sugimachi K. Characteristics of multicentric hepatocellular carcinomas: comparison with intrahepatic metastasis. *World journal of surgery* 2001; **25**(8): 991-995 [PMID: 11571981]
- 32 Detry O, Govaerts L, Deroover A, Vandermeulen M, Meurisse N, Malenga S, Bletard N, Mbendi C, Lamproye A, Honore P, Meunier P, Delwaide J, Hustinx R. Prognostic value of (18)F-FDG PET/CT in liver transplantation for hepatocarcinoma. *World journal of gastroenterology* 2015; **21**(10): 3049-3054 [PMID: 25780305 PMCID: 4356927 DOI: 10.3748/wjg.v21.i10.3049]
- 33 Adachi E, Maeda T, Kajiyama K, Kinukawa N, Matsumata T, Sugimachi K, Tsuneyoshi M. Factors correlated with portal venous invasion by hepatocellular carcinoma: univariate and multivariate analyses of 232 resected cases without preoperative treatments. *Cancer* 1996; **77**(10): 2022-2031 [PMID: 8640665 DOI: 10.1002/(SICI)1097-0142(19960515)77:10<2022::AID-CNCR9>3.0.CO;2-S]
- 34 Lee S, Kim SH, Lee JE, Sinn DH, Park CK. Preoperative gadoxetic acid-enhanced MRI for predicting microvascular

invasion in patients with single hepatocellular carcinoma. *Journal of hepatology* 2017 [PMID: 28483680 DOI: 10.1016/j.jhep.2017.04.024]

35 Lu XY, Xi T, Lau WY, Dong H, Xian ZH, Yu H, Zhu Z, Shen F, Wu MC, Cong WM. Pathobiological features of small hepatocellular carcinoma: correlation between tumor size and biological behavior. *Journal of cancer research and clinical oncology* 2011; **137**(4): 567-575 [PMID: 20508947 DOI: 10.1007/s00432-010-0909-5]

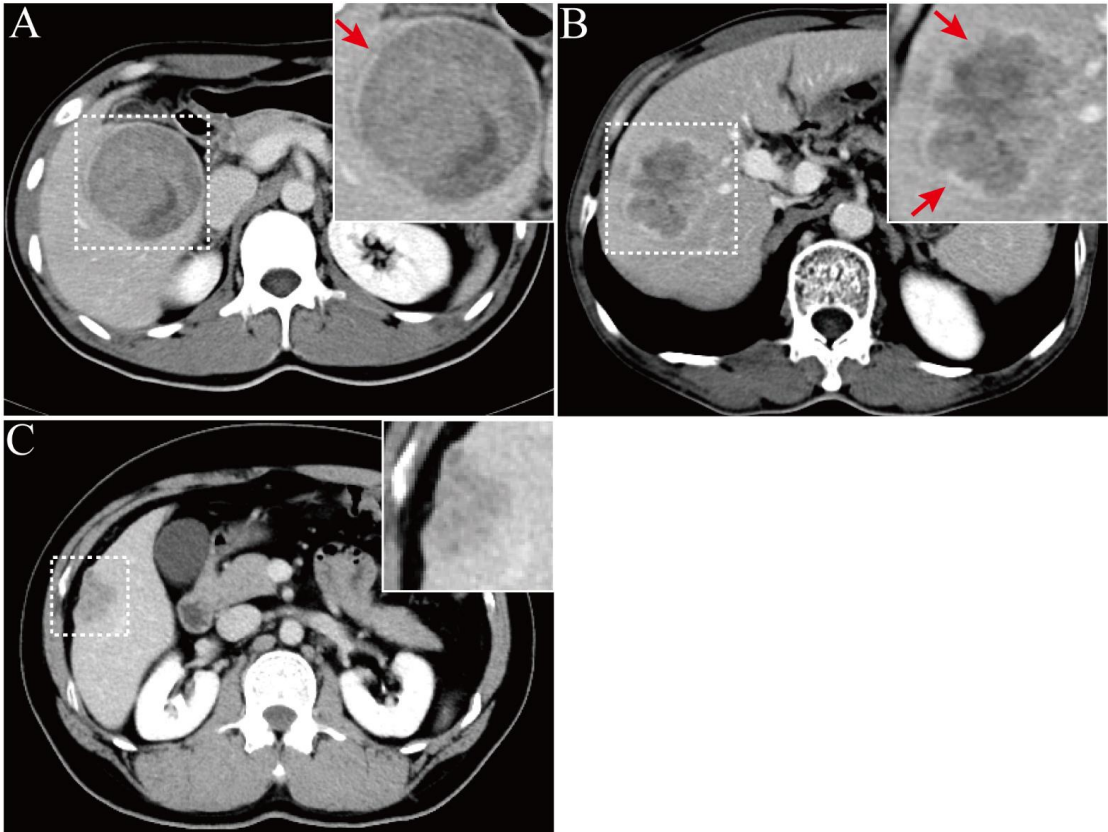
36 Moribe T, Iizuka N, Miura T, Kimura N, Tamatsukuri S, Ishitsuka H, Hamamoto Y, Sakamoto K, Tamesa T, Oka M. Methylation of multiple genes as molecular markers for diagnosis of a small, well-differentiated hepatocellular carcinoma. *International journal of cancer* 2009; **125**(2): 388-397 [PMID: 19384946 DOI: 10.1002/ijc.24394]

## FIGURE LEGENDS



**Figure 1.** A: Portovenous phase CT showing smooth margin at liver segment VI in a 36-year-old male patient without postoperative recurrence (dashed box); B: Portovenous phase CT showing focal extranodular type at liver segments V and VIII in a 38-year-old female patient with postoperative recurrence (dashed box);

C: Portovenous phase CT showing multinodular type at liver segments V and VI in a 35-year-old male patient with postoperative recurrence (dashed box)



**Figure 2.** A: Equilibrium phase CT showing complete tumor capsule involvement at liver segment V in a 33-year-old male patient without postoperative recurrence (dashed box); B: Equilibrium phase CT showing incomplete tumor capsule at liver segments V and VI in a 57-year-old female patient with postoperative recurrence (dashed box); C: Equilibrium phase CT showing missing tumor capsule at liver segment VI in a 41-year-old male patient with postoperative recurrence (dashed box)

**Table 1.** Quantitative and qualitative factors associated with recurrence of HCC following curative resection.

Risk factor	Follow-up recurrence	P
-------------	----------------------	---



		Yes	No	
MVI	Positive	22	22	0.000 <sup>a</sup>
	Negative	16	68	
<i>MVI-negative cases</i>				
Hepatic capsular invasion	Positive	4	29	0.193
	Negative	12	39	
Ki67		30.3 ± 20.4	28.0 ± 21.0	0.686
E-S grade*	I	1	6	0.646
	II	8	36	
	III	7	26	
Largest tumor diameter, <i>cm</i>		5.5 ± 3.0	4.8 ± 2.6	0.366
Arterial phase enhanced ratio		0.62 ± 0.34	0.66 ± 0.40	0.725
Portovenous phase enhanced ratio		0.77 ± 0.23	0.80 ± 0.33	0.685
Tumor capsule	Complete	3	35	0.023 <sup>b</sup>
	Incomplete	7	19	
Necrosis	Negative	6	14	0.521
	Positive	8	28	
	Negative	8	40	
Tumor margins	Smooth	9	56	0.019 <sup>b</sup>
	Focal	5	11	
	extranodular			
Peritumoral enhancement	Multinodular	2	1	0.240
	Positive	2	3	
	Negative	14	65	

AFP, ng/ml	336.8 ± 480.4	357.6 ± 505.6	0.882
TK1, U/L	5.7 ± 7.8	2.6 ± 2.5	0.377

$P < 0.01^a$  and  $P < 0.05^b$ , statistically significant; Statistics presented as mean ± SD;

Abbreviation: HCC, hepatocellular carcinoma; MVI, microvascular invasion; E-S, Edmondson-Steiner; AFP, α-fetoprotein; TK1, thymidine kinase-1.

\*E-S classification rubric as in [23].