

24

Name of Journal: *World Journal of Gastroenterology*

Manuscript NO: 57876

Manuscript Type: MINIREVIEWS

Enteroscopy in children and adults with inflammatory bowel disease

Giovanni Di Nardo, Gianluca Esposito, Chiara Ziparo, Federica Micheli, Luigi Masoni, Maria Pia Villa, Pasquale Parisi, Maria Beatrice Manca, Flavia Baccini, Vito Domenico Corleto

Abstract

Inflammatory bowel disease (IBD) includes Crohn's disease (CD), ulcerative colitis and unclassified entities. CD commonly involves the terminal ileum and colon but at the time of diagnosis it can be confined to the small bowel (SB) in about 30% of the patients,

Match Overview

1	Internet 246 words crawled on 10-Aug-2017 www.e-sciencecentral.org	4%
2	Internet 222 words crawled on 19-Sep-2018 journals.sagepub.com	4%
3	Crossref 143 words Marco Pennazio, Ludovica Venezia, Pablo Cortegoso Valdivia, Emanuele Rondonotti. "Device-assisted enteroscopy..."	2%
4	Crossref 74 words Di Nardo, Giovanni, Lissy de Ridder, Salvatore Oliva, Emanuele Casciani, Johanna C. Escher, and Salvatore Cui...	1%
5	Internet 70 words crawled on 19-Jul-2016 thieme-connect.de	1%
6	Crossref 68 words Laura Mans, Marianna Arvanitakis, Horst Neuhaus, Jacques Devière. "Motorized Spiral Enteroscopy for Occult Bleeding..."	1%
7	Crossref 59 words Efrat Broide, Tzipora Shalem, Vered Richter, Shay Matalon, Haim Shirin. "The Safety and Feasibility of a New Therapeutic..."	1%
8	Internet 31 words crawled on 13-Jul-2018 www.e-ce.org	1%
9	Internet 29 words crawled on 30-Aug-2020 academic.oup.com	<1%
10	Crossref 28 words Junpei Kondo. "Roles of double-balloon endoscopy in the diagnosis and treatment of Crohn's disease: a multicenter..."	<1%
11	Crossref 27 words Grainne Holleran, Giorgio Valerii, Annalisa Tortora, Francesco Scaldaferri et al. "The use of single balloon enteroscopy..."	<1%

Enteroscopy in children and adults with Inflammatory Bowel Disease



ALL

IMAGES

VIDEOS

2,920,000 Results

Any time ▾

Enteroscopy in children

<https://www.ncbi.nlm.nih.gov/pmc/articles/PMC6137589>

Jul 12, 2018 · **Device-assisted enteroscopy** is a new endoscopic technique for the evaluation of small bowel in adults and children. Data in pediatric population are limited. This review aims to identify diagnostic and therapeutic benefits of enteroscopy in children.

Author: Giovanni Di Nardo, Carlo Calabrese, ... **Publish Year:** 2018

Balloon-Assisted Enteroscopy and Capsule Endoscopy in ...

<https://www.ncbi.nlm.nih.gov/pmc/articles/PMC5642058>

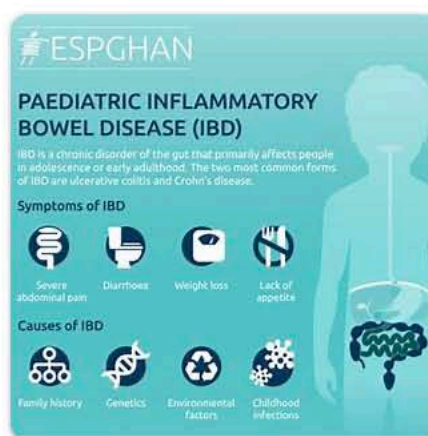
Sep 29, 2017 · Due to the nonspecific symptoms and anatomical location of the **disease**, small **bowel Crohn's disease** is a phenotype that is particularly difficult to manage. Since the introduction of capsule endoscopy in 2000 and balloon-assisted **enteroscopy** in the 21st century, it is now possible to directly inspect for small **bowel Crohn's disease**.

Cited by: 3

Author: Hsu Heng Yen, Chen Wang Chang, Jen-...

Publish Year: 2017

Images of enteroscopy in children and adults with Inflammatory Bow...

<bing.com/images>

Images of enteroscopy in children and Adults With Inflammatory B...

bing.com/images



See all images >

Enteroscopy in children

<https://www.ncbi.nlm.nih.gov/pmc/articles/PMC6137589>

Jul 12, 2018 · Obscure gastrointestinal bleeding, **Crohn's disease** and **small bowel polyps** are the main indications of enteroscopy in children. Device-assisted enteroscopy has high diagnostic yield for the main paediatric indications, but MR-enterography and capsule endoscopy should be used beforehand in diagnostic work-up to better identify candidates for enteroscopy and to improve its diagnostic and ...

Author: Giovanni Di Nardo, Carlo Calabrese, Ro... Publish Year: 2018

Comparison of double balloon enteroscopy in adults and ...

<https://www.ncbi.nlm.nih.gov/pmc/articles/PMC3732844>

Aug 07, 2013 · **Small bowel diseases** are common in children and adults. However, surgical approaches were the first choice for diagnostic and therapeutic applications before using techniques like CE and double balloon enteroscopy (DBE).

Cited by: 7 Author: Odul Egritas Gurkan, Tarkan Karakan, Ibrahi...
Publish Year: 2013

Enteroscopy in paediatric Crohn's disease - ScienceDirect

<https://www.sciencedirect.com/science/article/pii/S1590865812002897>

May 01, 2013 · 1. Introduction. **Crohn's disease** is a chronic immuno-mediated inflammation belonging to the **inflammatory bowel diseases** and also including ulcerative colitis and unclassified entities .The overall incidence **in children** in Western countries is approximately 5–6/100.000/year .The **disease** involves the small **bowel** in approximately 70% of cases and can be confined to the small **bowel** in up ...

Inflammatory Bowel Disease

Medical Condition

A group of inflammatory conditions of the colon and small intestine



A group of intestinal disorders that cause inflammation of the digestive tract.

Common (More than 200,000 cases per year in US)

Often requires lab test or imaging

Treatments can help manage condition, no known cure

Can be lifelong

IBD is said to be the result of autoimmune reactions. Inflammatory bowel disease (IBD) presents as Crohn's disease or ulcerative colitis. It may be characterized by diarrhea, abdominal pain and cramping, tiredness, and weight loss. Anti-inflammatory drugs play an important role in the treatment. Surgery is sometimes performed.

Symptoms

Symptoms may vary from mild to severe and include:

- Diarrhea
- Fever
- Fatigue
- Blood in stool
- Bleeding ulcers
- Stomach pain
- Bloating and cramping



Enteroscopy in children and adults with inflammatory bowel disease



ALL IMAGES VIDEOS MAPS NEWS SHOPPING

5,550,000 Results

Any time ▾

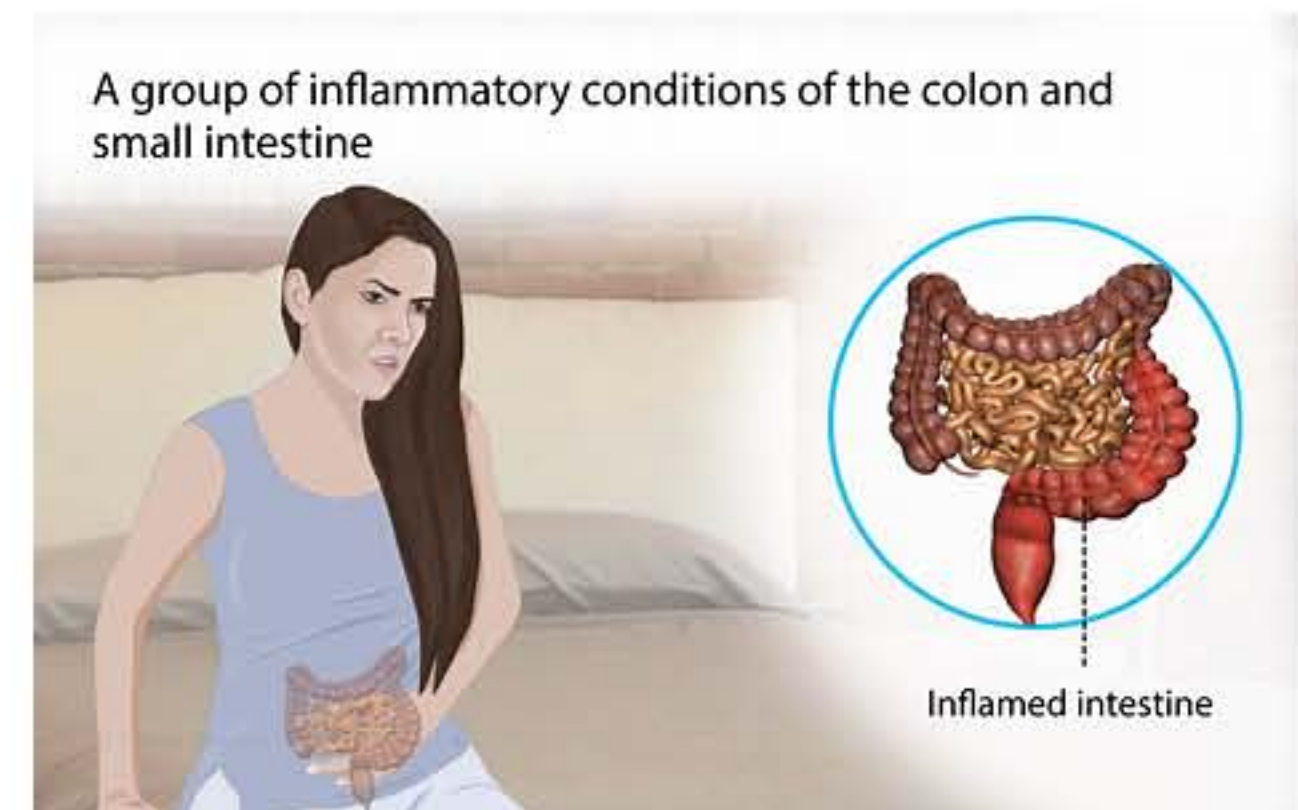
Images of enteroscopy in children and Adults with Infla... bing.com/images



See all images >

Inflammatory Bowel Disease

Medical Condition



A group of intestinal disorders that cause inflammation of the digestive tract.

- Common (More than 200,000 cases per year in US)
- Often requires lab test or imaging
- Treatments can help manage condition, no known cure
- Can be lifelong

IBD is said to be the result of autoimmune reactions. Inflammatory bowel disease (IBD) presents as Crohn's disease or ulcerative colitis. It may be characterized by diarrhea, abdominal pain and cramping, tiredness, and weight loss. Anti-inflammatory drugs play an important role in the treatment. Surgery is sometimes performed.

Symptoms

Enteroscopy in children

<https://www.ncbi.nlm.nih.gov/pmc/articles/PMC6137589>

Jul 12, 2018 - Obscure gastrointestinal bleeding, **Crohn's disease** and **small bowel polyps** are the main indications of enteroscopy in children. Device-assisted enteroscopy has high diagnostic yield for the main paediatric indications, but MR-enterography and capsule endoscopy should be used beforehand in diagnostic work-up to better identify candidates for enteroscopy and to improve its diagnostic and ...

Author: Giovanni Di Nardo, Carlo Calabrese, ... **Publish Year:** 2018

Comparison of double balloon enteroscopy in adults and ...

<https://www.ncbi.nlm.nih.gov/pmc/articles/PMC3732844>

Aug 07, 2013 - Core tip: Small **bowel diseases** are encountered frequently in **adults** and **children**. For diagnosing small **bowel disease**, endoscopy, barium series, ultrasound, and computed tomography methods were used before advanced techniques such as capsule endoscopy and double balloon **enteroscopy** (DBE). Many centers began to use DBE widely in **adults** and **children**.

Cited by: 7 **Author:** Odul Egritas Gurkan, Tarkan Karakan, Ibr...

Publish Year: 2013