

Format for ANSWERING REVIEWERS

March 31, 2015

Dear Editor,



Please find enclosed the edited manuscript in Word format (file name: 17078-review.doc).

Title: Anatomy and influence of splenic artery in laparoscopic spleen-preserving splenic lymphadenectomy

Author: Chao-Hui Zheng, Mu Xu, Chang-Ming Huang, Ping Li, Jian-Wei Xie, Jia-Bin Wang, Jian-Xian Lin, Jun Lu, Qi-Yue Chen, Long-Long Cao, Mi Lin

Name of Journal: *World Journal of Gastroenterology*

ESPS Manuscript NO: 17078

The manuscript has been improved according to the suggestions of reviewers:

1 Format has been updated

2 Revision has been made according to the suggestions of the reviewer

(1) The authors investigated vascular anatomy in the splenic hilum, evaluating the influence of different vessel types on the surgical outcomes in patients with gastric cancer undergoing laparoscopic total gastrectomy with spleen-preserving splenic hilar lymphadenectomy. The mean splenic hilar lymphadenectomy time and mean blood loss were significantly lower in the concentrated group than in the distributed group. It is interesting paper consists of important information, appropriate figures and tables. My comments are as following.

Response: Thank you.

(2) In Abstract, Methods and Results section should be written more briefly, according to Instruction for Authors of this journal.

Response: The Methods and Results section in Abstract were revised more briefly according to Instruction for Authors of this journal.

(3) In this paper, limitations of the work are not clearly stated. Could you include acknowledgment of its limitations constructively?

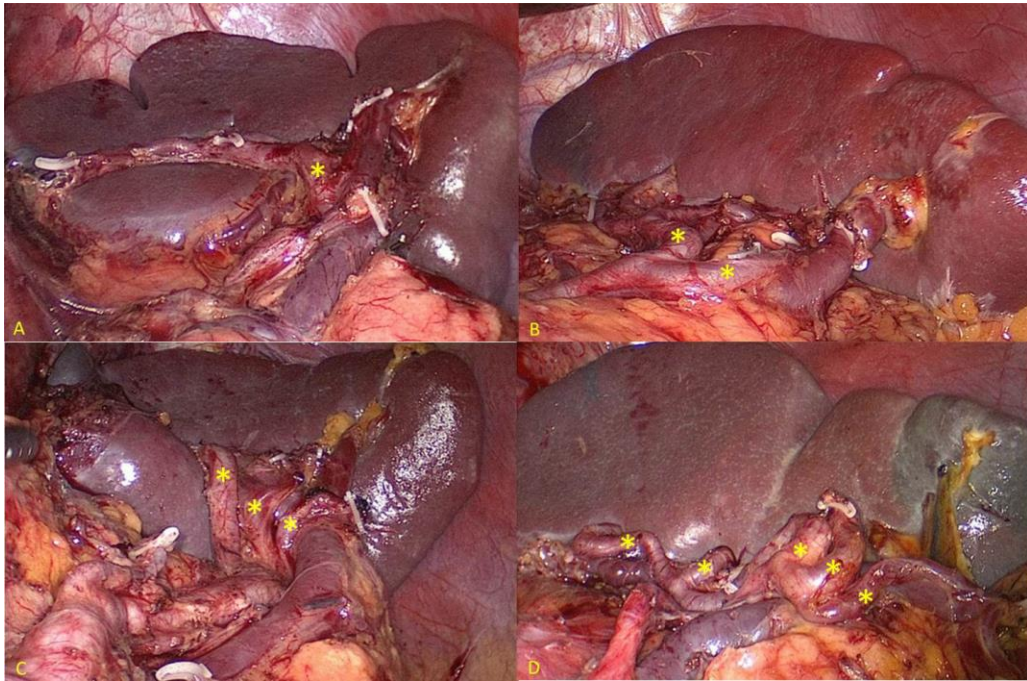
Response: The limitations of this work were as follows: First, it's of great difficulty to perform LTGSPL and can't be widely applied in other centers. Second, the results were based on a retrospective analysis of the clinical data at a single institution, it need be further confirmed in future large-scale, prospective clinical trials. We had added it in the paragraph 4 of the "DISCUSSION".

(4) Abbreviations should be defined at first appearance not only in abstract but also in main text (i.e., SpA).

Response: The abbreviations in the main text had been defined at their first appearance.

(5) In figure 2, additional marks indicating branched splenic lobar artery would be helpful to convince the figure findings understandably.

Response: The marks which indicated branched splenic lobar artery had been added in figure 2.



*The branches of the splenic lobar artery

3 References and typesetting were corrected

Thank you again for publishing our manuscript in the *World Journal of Gastroenterology*.

Sincerely yours,

A handwritten signature in black ink, appearing to read 'Peter Laszlo LAKATOS'.

Peter Laszlo LAKATOS, MD, PhD
 1st Dept. of Medicine
 Semmelweis University
 Budapest, Koranyi 2A
 H-1083-Hungary
 Fax: +36-1-313-0250
 E-mail: kislakpet@bell.sote.hu