



## Gradient inflammation in the pancreatic stump after pancreaticoduodenectomy: Two case reports and review of literature

Tie-Gong Wang, Liang Tian, Xiao-Ling Zhang, Lei Zhang, Xiu-Lei Zhao, De-Shuai Kong

**Specialty type:** Medicine, research and experimental

**Provenance and peer review:** Unsolicited article; Externally peer reviewed.

**Peer-review model:** Single blind

**Peer-review report's scientific quality classification**

Grade A (Excellent): 0  
Grade B (Very good): 0  
Grade C (Good): 0  
Grade D (Fair): 0  
Grade E (Poor): 0

**P-Reviewer:** Nagaya M, Japan

**Received:** October 29, 2023

**Peer-review started:** October 29, 2023

**First decision:** December 15, 2023

**Revised:** December 26, 2023

**Accepted:** March 7, 2024

**Article in press:** March 7, 2024

**Published online:** March 26, 2024



**Tie-Gong Wang, Lei Zhang, Xiu-Lei Zhao, De-Shuai Kong,** Department of Surgery, Cangzhou Central Hospital, Cangzhou 061000, Hebei Province, China

**Liang Tian, Xiao-Ling Zhang,** Department of Pathology, Cangzhou Central Hospital, Cangzhou 061000, Hebei Province, China

**Corresponding author:** Tie-Gong Wang, MD, PhD, Attending Doctor, Department of Surgery, Cangzhou Central Hospital, No. 16 Xinhua, Cangzhou 061000, Hebei Province, China.  
[healthbycliff@gmail.com](mailto:healthbycliff@gmail.com)

### Abstract

#### BACKGROUND

Postoperative pancreatic fistula (POPF) contributes significantly to morbidity and mortality after pancreaticoduodenectomy (PD). However, the underlying mechanisms remain unclear. This study explored this pathology in the pancreatic stumps and elucidated the mechanisms of POPF following PD.

#### CASE SUMMARY

Pathological analysis and 16S rRNA gene sequencing were performed on specimens obtained from two patients who underwent complete pancreatectomy for grade C POPF after PD. Gradient inflammation is present in the pancreatic stump. The apoptosis was lower than that in the normal pancreas. Moreover, neutrophil-dominated inflammatory cells are concentrated in the ductal system. Notably, neutrophils migrated through the ductal wall in acinar duct metaplasia-formed ducts. Additionally, evidence indicates that gut microbes migrate from the digestive tract. Gradient inflammation occurs in pancreatic stumps after PD.

#### CONCLUSION

The mechanisms underlying POPF include high biochemical activity in the pancreas, mechanical injury, and digestive reflux. To prevent POPF and address pancreatic inflammation and reflux, breaking the link with anastomotic dehiscence is practical.

**Key Words:** Pancreaticoduodenectomy; Postoperative pancreatic fistula; Inflammation; Digestive reflux; Case report

©The Author(s) 2024. Published by Baishideng Publishing Group Inc. All rights reserved.

**Core Tip:** Postoperative pancreatic fistula (POPF) is a major complication of pancreaticoduodenectomy. However, the underlying mechanisms remain unclear. Compared to the relatively simple histological structure of the gastrointestinal wall, pancreatic stump is undoubtedly the crucial factor in the occurrence of POPF. This study systemically investigated the pathology in pancreatic stumps and provided insights into the underlying mechanisms of POPF. Gradient inflammation and digestive reflux are present in the pancreatic stumps. As the understanding of the role of inflammation in POPF increases, effectively managing the side effects of inflammation will bring about a significant possibility of terminating POPF.

**Citation:** Wang TG, Tian L, Zhang XL, Zhang L, Zhao XL, Kong DS. Gradient inflammation in the pancreatic stump after pancreaticoduodenectomy: Two case reports and review of literature. *World J Clin Cases* 2024; 12(9): 1649-1659

**URL:** <https://www.wjgnet.com/2307-8960/full/v12/i9/1649.htm>

**DOI:** <https://dx.doi.org/10.12998/wjcc.v12.i9.1649>

## INTRODUCTION

Postoperative pancreatic fistula (POPF) is a mechanical issue caused by the leakage of fluid from the pancreatic remnant into the abdominal cavity when pancreatic anastomosis fails[1]. It is a significant contributor to postoperative morbidity and mortality after pancreaticoduodenectomy (PD) and results in high social and financial costs. Currently, no effective strategies have been developed to prevent POPF[2,3].

Long-term clinical observations have suggested that postoperative pancreatitis (POP) correlates with the occurrence of POPF after PD[4,5]. Analysis of drained fluids and animal studies provide indirect evidence linking trypsinogen activation and inflammation around the site of pancreatoenteric anastomosis to the onset of POPF on the first postoperative day[6]. However, the exact mechanisms behind POPF and the pathology in the pancreatic stump remain unclear[7,8]. At present, the limited sample size of pancreatic stumps at each center has stunted the comprehensive analysis of POPF. This study aimed to investigate the pathology and microbiology of pancreatic stumps and elucidate the underlying mechanisms of POPF.

The diagnosis and classification of pancreatic fistula in this study followed the guidelines of the International Study Group on Pancreatic Fistula[9]. A grade A POPF is characterized as a leak with no significant clinical effects, while grades B and C POPFs are considered clinically relevant due to their impact on the patients' health.

## CASE PRESENTATION

### Chief complaints

**Case 1:** A 60-year-old female who reported yellow urine for 20 d.

**Case 2:** A 66-year-old male who found jaundice for three months.

### History of present illness

**Case 1:** 20 d ago, the patient noticed yellow urine and sought treatment at a local hospital for gastric disease, but there was no improvement. The patient began experiencing poor appetite, accompanied by an aversion to greasy food, upper abdominal bloating, occasional clay-colored stools, and itching skin. There were no symptoms of fever, acid reflux, nausea, vomiting, or chest tightness.

**Case 2:** The patient first presented with generalized jaundice without any obvious cause three months ago, accompanied by yellowing of the eyes and urine. There was no nausea, vomiting, abdominal pain, or bloating. The patient did not experience fever, chills, diarrhea, urgency after defecation, or loss of appetite.

### History of past illness

**Case 1:** The patient underwent an appendectomy 43 years ago; has a three-year history of diabetes and hyperlipidemia.

**Case 2:** Two months ago, the patient experienced a lacunar stroke.

### Personal and family history

Neither patient had a personal or family history of similar diseases.

### Physical examination

Those two patients had similar performance. The patients are lucid and in good spirits. The skin and sclera of the entire body are jaundiced. The abdomen is flat, with no visible peristalsis or wave-like movements. There is no tenderness, rebound tenderness, or muscular tension throughout the abdomen. The liver and spleen are not palpable, and Murphy's sign is negative. Abdominal percussion produces a tympanic sound, and shifting dullness is negative. There is no per-

cussion pain in the liver area or bilateral renal area. Bowel sounds are present and normal.

### Laboratory examinations

The laboratory test results for these two patients both indicate obstructive jaundice, accompanied by elevated levels of carbohydrate antigen 199.

**Pathology and apoptosis:** Two experienced pathologists independently evaluated the pathology without prior knowledge of clinical information. The specimens were cut into 4- $\mu$ m-thick sections and stained with hematoxylin and eosin for pathological examination. The presence of pancreatic ducts and centroacinar cells was detected using a mouse anti-cytokeratin 19 (CK19) antibody (ZM-0074; OriGene Technologies), followed by a secondary antibody using the ultraView Universal Diaminobenzidine (DAB) Detection Kit (Roche).

The inflammatory index was calculated using a histological scoring system for acute pancreatitis, including edema, inflammatory cell infiltration, and necrosis[10]. Furthermore, the occurrence of apoptosis was assessed using a terminal deoxynucleotidyl transferase dUTP nick-end labeling (TUNEL) assay with a Cell Death Detection Kit from Roche. The cell nuclei were stained with TUNEL to visualize apoptosis. Pancreatic head tissue was used as a control to define the normal level of inflammation and apoptosis.

**Microbiome and 16S rRNA bacterial gene sequencing:** DNA was extracted from each sample, preserved in formalin, and embedded in paraffin (Norgen BioTek, Thorold, ON, Canada). Thirty nanograms of DNA were obtained from each sample and subjected to polymerase chain reaction (PCR) amplification. The hypervariable V3-V4 regions were targeted using primers 338F (5'-ACTCCTACGGGAGGCAGCA-3') and 806R (5'-GGACTACHVGGGTWTCTAAT-3') for amplification, which consisted of the following steps: 30 s at 94 °C, 30 s at 50 °C, and 60 s at 72 °C, which were repeated for 30 cycles. The PCR products were evaluated by agarose gel electrophoresis at 170 voltages for 30 min on a 1% (w/v) gel with 600 ng of amplified DNA in each well.

Purified PCR products were sequenced using a MiSeq platform (Illumina, United States), and image analysis, base calling, and error estimation were performed using the Illumina Analysis Pipeline (Version 2.6). Sequences shorter than 230 bp with low-quality scores, containing ambiguous bases, or those that did not match the primer sequences and barcode tags were screened. The qualified reads were grouped into operational taxonomic units (OTUs) with a similarity level of 97%. Alpha diversity indices were calculated and presented as Chao's, Shannon-Wiener's, and Simpson's indices and the number of OTUs[11]. The distances between samples were determined using principal component analysis (PCA) [12]. PCA is a multivariate analysis that reduces data dimensionality while preserving covariance. The most attractive property of PCA is that the distances between clusters reflect their genetic and geographical distances[13]. The evolutionary distances between the microbial communities in each sample were calculated using Bray-Curtis algorithms and observed using an unweighted pair group method with an arithmetic mean (UPGMA) clustering tree to show dissimilarity (1-similarity) at the phylum, class, order, family, and genus levels[14].

**Statistical analysis:** Statistical analysis was conducted to determine the significance of the results. One sample *t*-test was employed in the microbial analysis. A *P*-value of less than 0.05 was considered statistically significant, and all calculations were carried out using IBM SPSS statistics version 26.0.

**Pathology in the pancreatic stumps:** The pancreatic stumps exhibit widespread inflammation and other pathological alterations. Subcapsular hematoma is common and extends deep into the parenchyma surrounding the suture, whereas it is relatively sparse in the tail. Neutrophils were the dominant inflammatory cells that infiltrated the glandular and interlobular structures (Figure 1A, B, and D). Necrotic foci were scattered throughout the stump, with the center exhibiting homogeneous staining and surrounded by plasma cells, neutrophils, lymphocytes, and eosinophils (Figure 1C).

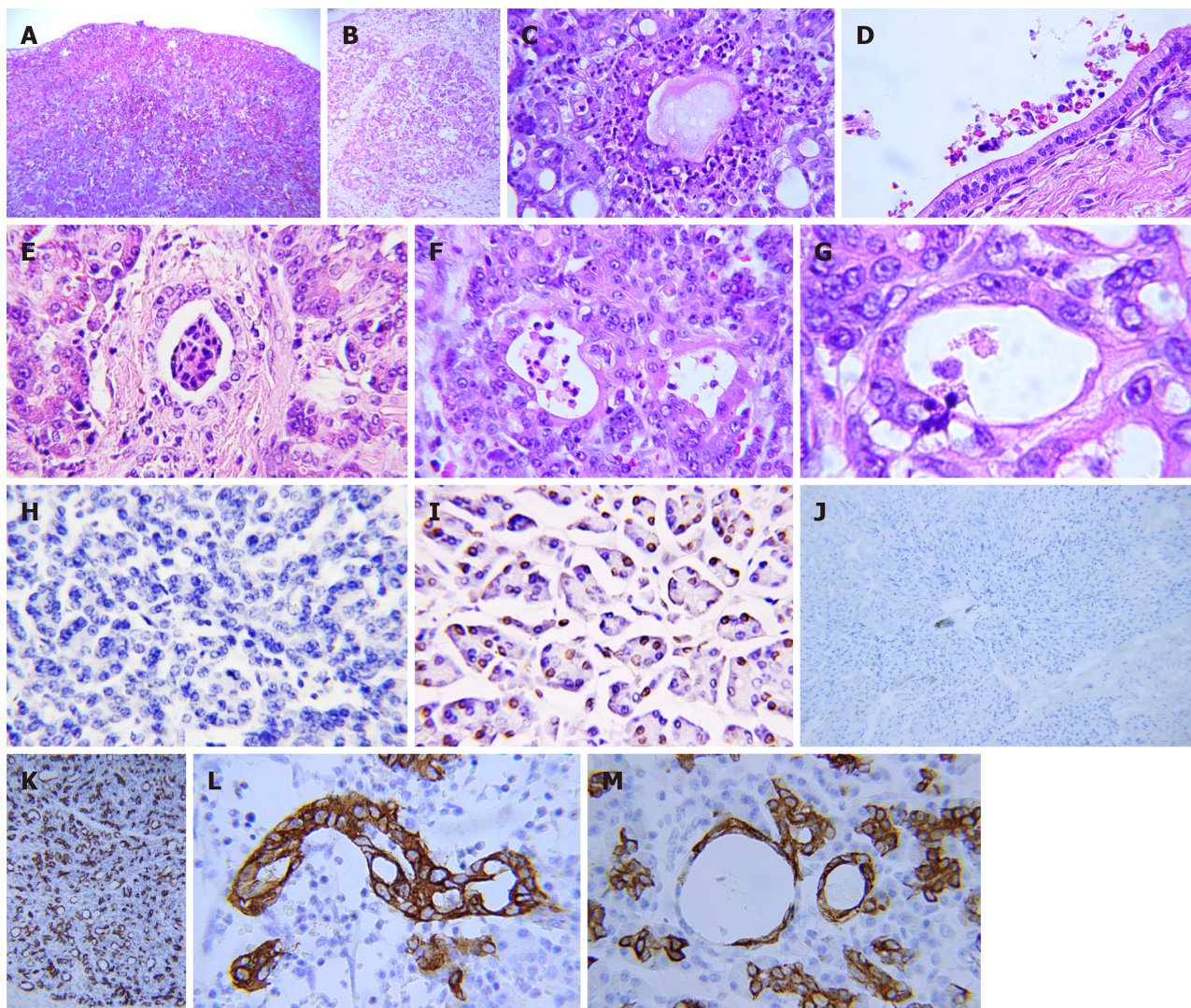
Apoptotic activity in the pancreatic head decreased or disappeared after POPF, resulting in cell proliferation throughout the stump (Figure 1H and I). The glandular lobes were swollen with disrupted and dispersed acini, acinar cell nuclei increased in size, and chromatin density was reduced (Figure 1A-C). Gradient inflammation is observed in the stump.

Inflammatory and red blood cells (RBC) were also concentrated in the ductal system, including the main pancreatic duct, interlobular duct, and abnormal ducts formed by acinar duct metaplasia (ADM) (Figure 1D and E). Notably, the concentration of neutrophils in the ductal system was significantly higher than that in the local vasculature. The ducts formed by the ADM are the weakest parts of the entire ductal network, where the blood-duct barrier is destroyed. The increased permeability of the ductal system allows the migration of blood cells, particularly neutrophils, from the blood vessels into the space between the acinar cells and basal membrane and then into the lumen of the ductal system (Figure 1G). ADM could be detected throughout the entire pancreatic stump, exhibiting no discernible pattern in its distribution. Moreover, the ductal system was unfavorable for the survival of blood cells as they decomposed (Figure 1E and F). RBCs lose their membranes, and neutrophils are decomposed, leaving fragmented nuclei.

The expression of CK19 becomes strongly positive in the pancreatic stump compared with that in the normal parenchyma (Figure 1J and K). During ADM, acinar cells lose their normal shape and function and transform into ductal-like cells. Moreover, the ducts formed by ADM differed significantly in appearance from normal ducts and were characterized by duck-like cells and irregular lumens (Figure 1L). The original acinar cells were either pushed aside by the newly formed duct-like cells or incorporated into the newly formed ducts. Furthermore, it seems that the pressure in the lumen increased, resulting in the dilation of the regional ducts formed by the ADM (Figure 1M).

**Microbial distribution and digestive reflux in pancreatic stumps:** We conducted microbial analyses, including bacterial and fungal analyses, on both patients. Unfortunately, the vast majority of the fungal sequences could not be identified, so





**Figure 1 Pathology in the pancreatic stump with postoperative pancreatic fistula after pancreaticoduodenectomy.** A: Subserosal hematoma; B: Infiltration of inflammatory cells in glandular lobes and interlobular structures; C: Necrotic foci; D: Concentration of inflammatory cells and red blood cells in the main pancreatic duct; E: Destruction of inflammatory cells in the interlobular duct; F: Decomposition of inflammatory cells in the acinar duct metaplasia (ADM)-formed ducts; G: Transmigration of a neutrophil through the ADM-formed duct; H: Weakening or disappearance of apoptosis in the pancreatic stump after pancreaticoduodenectomy (transferase dUTP nick-end labeling); I: Normal level of apoptosis in control tissue of the pancreatic head before the postoperative pancreatic fistula (transferase dUTP nick-end labeling); J: Normal level of cytokeratin 19 (CK19) expression in the pancreas; K: Strong expression of CK19 in the pancreatic stump after pancreaticoduodenectomy; L: Malformation of the ADM-formed duct; M: Dilatation of the ADM-formed ducts.

we focused solely on the bacteria. The length of the sequence was 400-440 bp. For further analysis, we selected a subset of 26301 tags from each sample in the patient 1 and 31277 tags in the patient 2. The alpha diversity indices are presented in [Table 1](#). Our analysis revealed a statistically significant increase in OTUs in the stump compared to those in the duodenum ( $P = 0.000$  for patient 1,  $P = 0.042$  for patient 2), but no significant difference was observed in the pancreatic head ( $P = 0.729$  in patient 1,  $P = 0.161$  in patient 2).

At the genus level, the most common bacteria found in the patient 1 samples are *Bacillus*, *Bacteroides*, *Escherichia-Shigella*, and *Faecalibacterium*, along with some unidentified species. The most abundant genera are *Bacillus*, *Comamonas*, *Stenotrophomonas*, *Bacteroides*, and *Pelomonas*.

Furthermore, the dominant bacterial species exhibited a declining distribution with increasing distance from the transection plane. The dissimilarity and variability of the samples are shown in [Figure 2A](#) and [B](#). The distances between the samples demonstrated a much more clustered distribution in the patient 1 than in the patient 2 through PCA. However, the proportion of bacterial DNA and microbiome in the samples varied in the jejunum, pancreatic head, and pancreatic stump. The UPGMA clustering analysis indicated that the microbial community distribution adjacent to the transection plane in these two patients was similar to that in the jejunum ([Figure 2C](#) and [D](#)). The preoperative distribution of bacterial DNA in the pancreatic head was comparable to that in the pancreatic tail, where the inflammatory response was relatively slow.



**Table 1 Bacterial alpha diversity indices in the jejunum, pancreatic head, and stump**

Sample ID	Clean_Tags	Final_Tags	Chao's index	Shannon-Wiener's index	Simpson's index	OTUs
PLDB0	158140	26301	52.20	1.01	0.24	34
PLPB0	33717	26301	332.00	5.08	0.85	318
PLPB1	54270	26301	522.35	1.68	0.34	324
PLPB2	59038	26301	422.91	1.81	0.36	249
PLPB3	27489	26301	339.00	1.72	0.36	250
PLPB4	33657	26301	207.33	1.62	0.41	109
PLPB5	29017	26301	405.02	2.05	0.41	310
PLPB6	44928	26301	487.23	4.08	0.69	439
PLPB7	115402	26301	444.89	6.06	0.96	338
PLPB8	168118	26301	537.00	6.48	0.97	418
PZDB0	165233	31277	140.00	1.25	0.32	35
PZPB0	183971	31277	100.50	2.00	0.47	89
PZPB1	47561	31277	68.00	1.48	0.34	44
PZPB2	38512	31277	241.87	1.45	0.31	189
PZPB3	48707	31277	86.10	1.04	0.27	49
PZPB4	32320	31277	241.97	1.27	0.28	184
PZPB5	34351	31277	275.18	2.04	0.47	183
PZPB6	65726	31277	408.28	6.00	0.95	381

OUT: Operational taxonomic units.

### Imaging examinations

**Case 1:** Computed tomography (CT) examination showed that there was a mass in the middle and lower sections of the common bile duct, with dilation of the intrahepatic and extrahepatic bile ducts.

**Case 2:** Magnetic resonance imaging suggested a duodenal mass, and a biopsy confirmed it as duodenal adenocarcinoma.

## FINAL DIAGNOSIS

### Case 1

Biliary carcinoma.

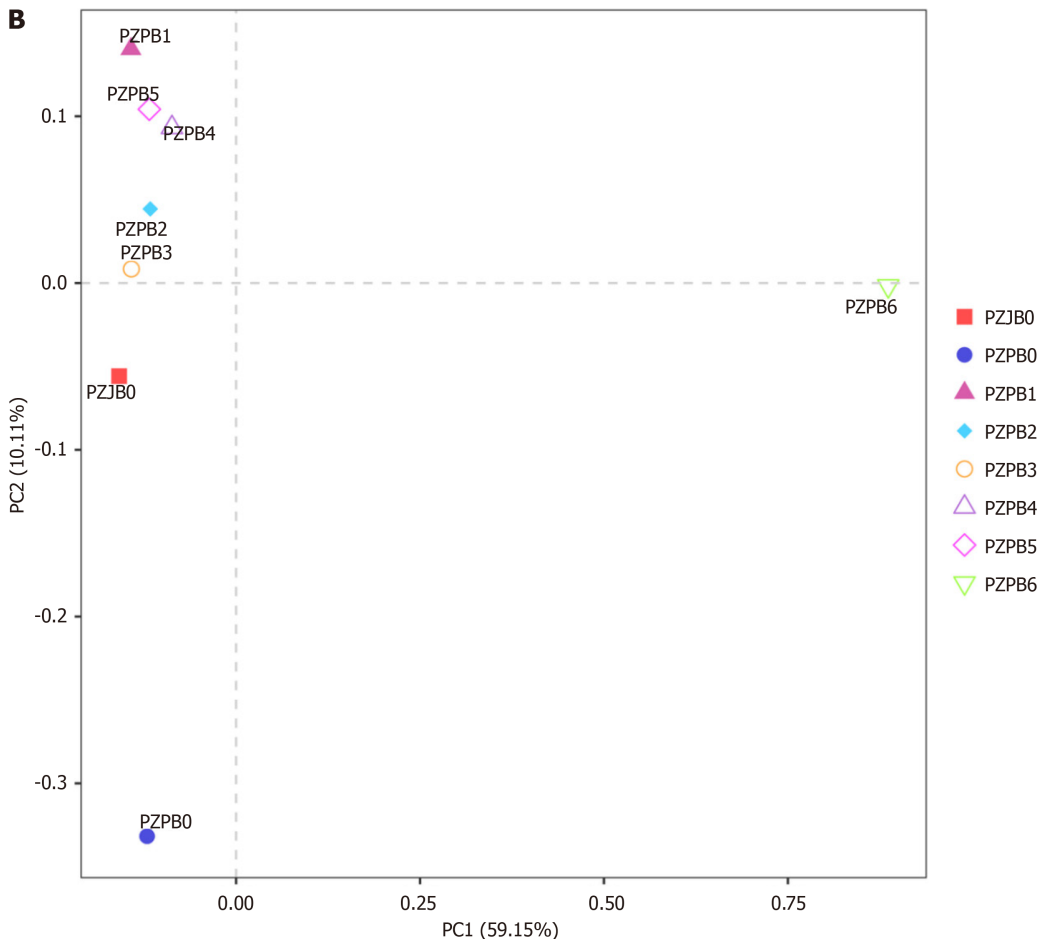
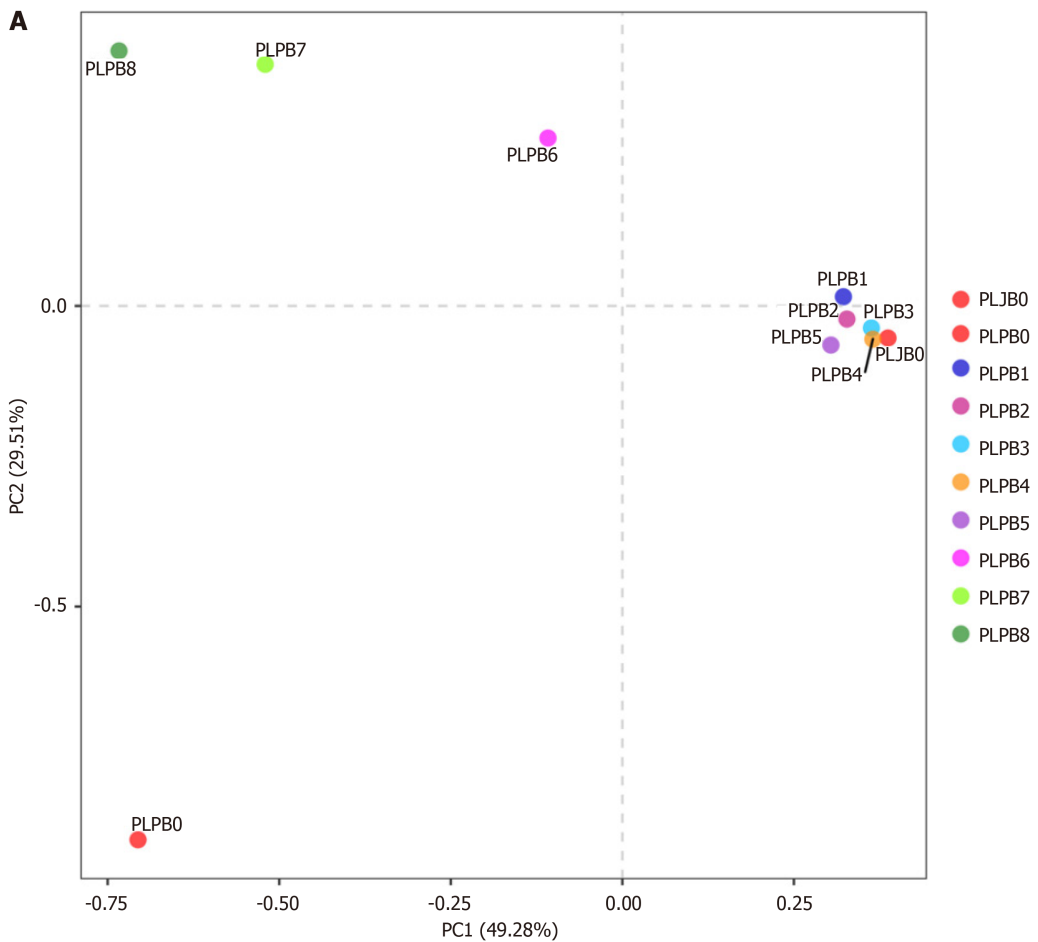
### Case 2

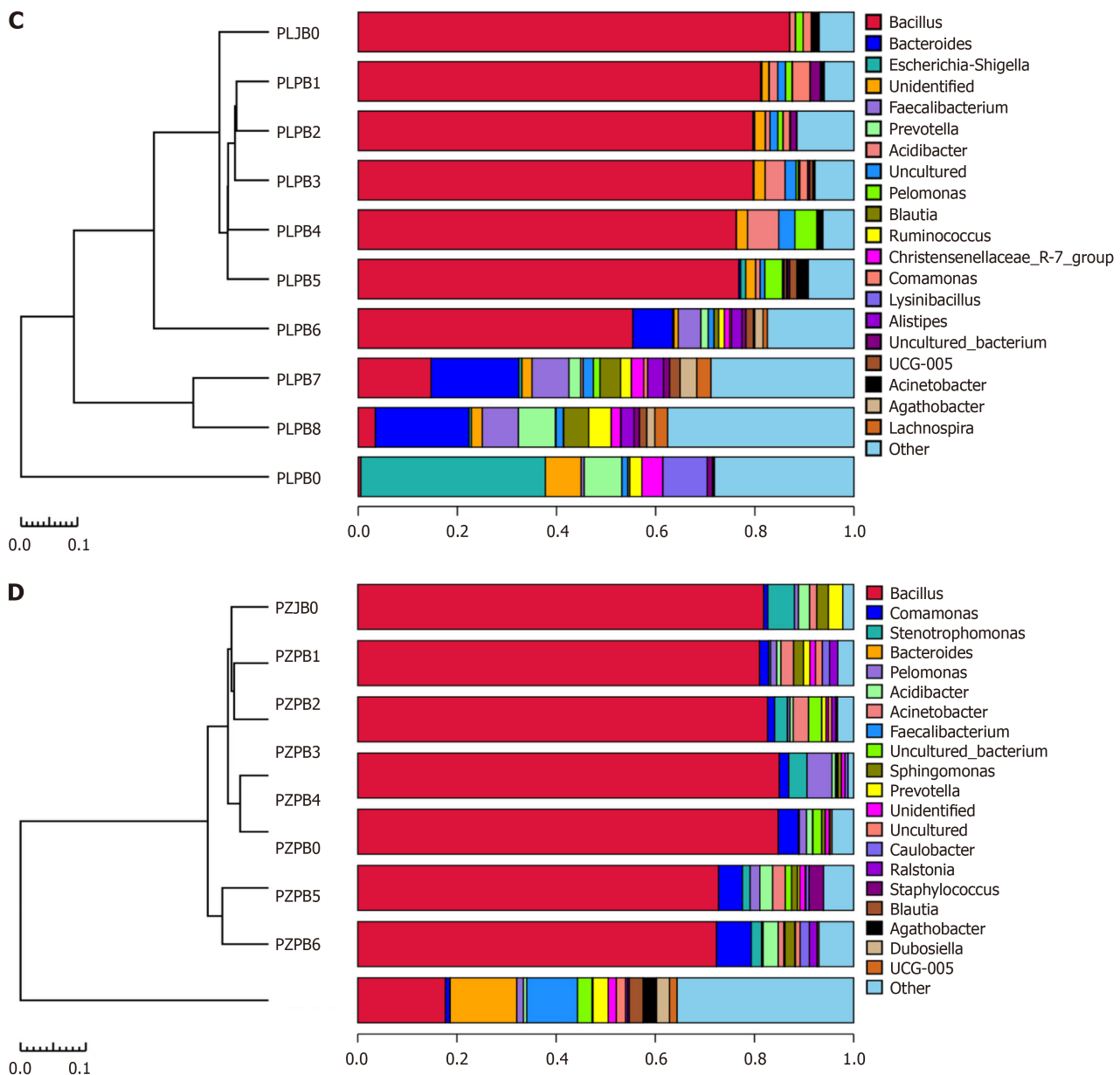
Duodenal carcinoma.

## TREATMENT

Those two patients accepted conventional PDs. The pancreas was transected at the neck in front of the portal vein, and a modified Blumgart anastomosis was performed in all cases. A U-suture was placed 1 cm from the transection plane. Then, 3-0 polypropylene and 5-0 polydioxanone (both from Ethicon) were used in the outer and inner layers. Catheters with a range of 5-8 Fr were placed in the stump and fixed using anchoring sutures.

POPF happened in both cases within 6 d postoperatively. And those two patients accepted total pancreatectomy after life-threatening and repeat abdominal bleeding. We collected two pancreatic stump samples measuring 12 cm × 6 cm × 3 cm and 12 cm × 4 cm × 2 cm. Eight and six slices of the specimens were sequentially obtained with an interval of 1.5-2.0 cm from the transection plane to the pancreatic tail. In addition, patient-matched specimens from the jejunum and pancreatic head, labeled PLJ0, PLP0, PZJ0, and PZP0, were obtained from prior surgeries and used as controls.





**Figure 2** Principal component analysis and unweighted pair group method with arithmetic mean analysis of bacterial distribution in both patients' specimens. A: Principal component analysis (PCA) of bacterial distribution in patient 1; B: PCA of bacterial distribution in patient 2; C: Unweighted pair group method with arithmetic mean (UPGMA) clustering tree of the bacterial community in patient 1; D: UPGMA clustering tree of the bacterial community in patient 2. PLJB: Bacteria in patient 1's jejunum; PLPB: Bacteria in patient 1's pancreas; PZJB: Bacteria in patient 2's jejunum; PZPB: Bacteria in patient 2's pancreas.

## OUTCOME AND FOLLOW-UP

### Case 1

This patient passed away in the seventh month after surgery due to severe malnutrition and multiple organ dysfunction syndrome.

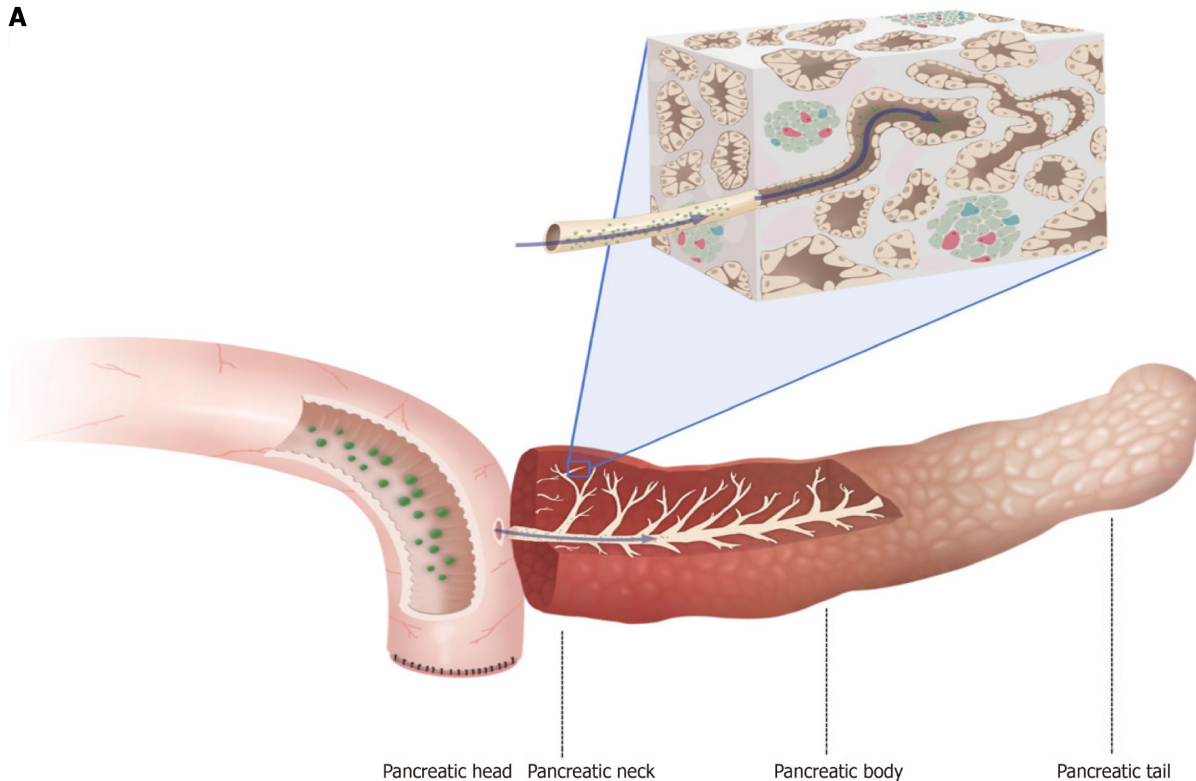
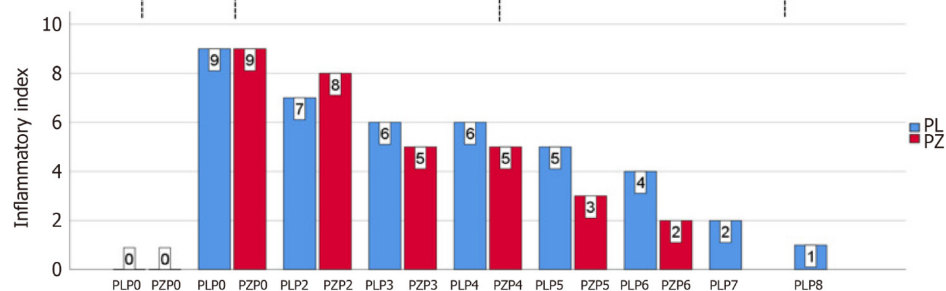
### Case 2

This patient passed away on the day 11 after the first surgery due to multiple infections and multiple organ dysfunction syndrome.

## DISCUSSION

POPF is a major and unresolved complication of PD. Recent studies have indicated that POPF is associated with POP; however, the exact mechanism remains unknown. One reasonable hypothesis suggests that the local activation of pancreatic enzymes triggers POPF, leading to increased damage to acinar cells, ischemia, manipulation of the gland, and



**A****B**

**Figure 3 Gradient inflammation and digestive reflux in pancreatic stump after pancreaticoduodenectomy.** A: Schematic representation of digestive reflux in pancreaticojejunostomy. The digestive fluid passes through the anastomosis and reaches deep into the pancreatic ductal system, accompanied by the high-level biochemical activity of the pancreas and mechanical injury, resulting in a gradient of inflammation in the stump; B: Inflammatory index in the pancreatic stump ranges from nine to one. The pancreatic heads are used as controls and labeled as PLP0 and PZP0.

blockage of the pancreatic duct[15]. However, no solid evidence for this has been reported to date.

No consensus exists currently regarding the definition of POP. Although serum amylase, lipase, and urinary trypsinogen levels are often used as diagnostic criteria for pancreatitis[16,17], previous studies utilizing CT imaging have found that only 26% of patients (13/50) showed radiological evidence of the condition[18].

Adults' acinar cells are highly plastic and can undergo trans-differentiation into a progenitor-like cell type with ductal characteristics, which has been linked to multiple mechanisms, including ductal ectasia[19], the activation of nuclear factor-kappaB[20], Notch receptors[21], and epidermal growth factor receptor[22]. ADM is a critical feature of the façade that militates pancreatic regeneration after injury and is an essential protective mechanism during pancreatitis[23].

Inflammation may drive ADM in pancreatitis cases[20]. In our study, ADM-induced ducts exhibited distinct morphological features that differentiated them from normal ducts, including increased lumen size and elongated ductal cells. Moreover, no previous studies have reported increased ductal permeability in patients with pancreatitis. However, a case study has documented the presence of neutrophil-predominant inflammatory cell infiltration, ADM, and fibrosis in a patient with pancreatitis induced by pembrolizumab[24]. Our study showed that the blood-duct barrier was destroyed, and the ducts formed by ADM served as sites for the transmigration of neutrophils and RBCs through the duct wall.

The significant accumulation of neutrophil-dominant inflammatory cells within the ductal system and the gradient distribution of bacteria from the intestine suggest that inflammatory agents originate from the intestine, traverse the site of anastomosis, and accumulate in the ductal system. Further evidence of this reflux is the decomposition of blood cells in the ductal system, as the activated enzymes in the system are not conducive to the survival of blood cells. Intra-acinar trypsin activation within the pancreas is enough to cause acute pancreatitis[25]. The reflux of digestive fluid could exacerbate local pancreatitis caused by mechanical injuries, such as sutures or dissection (Figure 3).

Theoretically, intestinal fluid can flow through the anastomosis site or stent into the stump and has the potential to activate trypsin during Blumgart anastomosis. However, the small size of the jejunal loop incision (2-3 mm) minimizes enteric fluid reflux. In contrast, invagination with pancreaticojejunostomy is associated with increased reflux[26]. This difference in reflux may explain why Blumgart anastomosis minimizes severe complications after PD[27]. Additionally, gastric juice performs less biologically than intestinal fluid, making pancreaticogastrostomy a safer alternative to pancreaticojejunostomy[28].

The main distinction between pancreaticojejunostomy and other digestive anastomoses is the high level of biological activity of the pancreas, which is characterized by its enzymatic secretory capacity[29]. Some researchers have suspected that suture placement is induced by the placement of sutures[6]. Our study found that suture placement can lead to parenchymal damage and the formation of suture-induced hematomas that extend deep into the parenchyma.

Based on these findings, the underlying mechanisms of POPF include high-level biochemical activity in the pancreas, mechanical injury, and digestive reflux. These three mechanisms contribute to the increased incidence and prolonged healing of POPF. The inflammatory response in the stump reached its peak on day 4 after PD and did not heal even 30 d after surgery.

Additionally, various risk factors, including soft tissue texture, small pancreatic duct[30], ischemia, ductal obstruction, excessive blood loss, high intraoperative fluid intake[31], elevated bilirubin level, large body mass index[32], low fibrosis[33], high acinar cell density, and acinar marginal content[34], increase the complexity of surgical maneuvers, resulting in anastomotic failure due to the heightened local tension created by inflammation and reflux.

Regardless of the surgical techniques employed, including stents[35], various methods of pancreaticojejunostomy and pancreaticogastrostomy[26], fibrin sealants, autologous tissue patches, bioabsorbable mesh[36], externally draining of pancreatic fluid[37], and the application of somatostatin[38], mechanical damage to the pancreas and digestive reflux cannot be entirely avoided. Therefore, surgeons have limited flexibility when treating each patient.

Due to the unavoidable suture and POPF, a paradox arises. Preventing pancreatitis in the stump or achieving a flawless and strong anastomosis for each patient is not possible. Nonetheless, implementing measures to eliminate reflux and prevent pancreatic fluid from entering the abdominal cavity in the event of anastomotic failure has great potential to mitigate the incidence and severity of POPF.

## CONCLUSION

POPF is a complex condition that is caused by increased biochemical activity, mechanical damage, and digestive reflux. Currently, manipulation of the pancreatic stump and reflux into the pancreatic duct cannot be avoided. Based on these findings, stopping reflux and reducing inflammation in the pancreatic stump can decrease the occurrence of pancreatic fistulas. However, a more practical approach is to allow for the presence of inflammation and anastomotic dehiscence while controlling the proper flow of pancreatic juice, thereby breaking the logical relationship between anastomotic dehiscence and POPF.

## ACKNOWLEDGEMENTS

The corresponding author expresses gratitude to William R. Jarnagin (Memorial Sloan-Kettering Cancer Center) and Kevin C Soares (Memorial Sloan-Kettering Cancer Center) for their valuable assistance at the onset of this project amid the challenges posed by the COVID-19 pandemic in New York in 2020. The author also extends appreciation to Joshua Jolissaint (Memorial Sloan-Kettering Cancer Center) for his careful review of this manuscript.

## FOOTNOTES

**Author contributions:** Wang TG conceived the study and wrote the manuscript; Tian L and Zhang XL performed research (pathological analyses); Zhang L analyzed data; Zhao XL and Kong DS contributed to the new methods; and all the authors have read and agreed to the published version of the manuscript.

**Informed consent statement:** All study participants, or their legal guardian, provided informed written consent prior to study enrollment.

**Conflict-of-interest statement:** All the authors report no relevant conflicts of interest for this article.

**CARE Checklist (2016) statement:** The authors have read the CARE Checklist (2016), and the manuscript was prepared and revised according to the CARE Checklist (2016).

**Open-Access:** This article is an open-access article that was selected by an in-house editor and fully peer-reviewed by external reviewers. It is distributed in accordance with the Creative Commons Attribution NonCommercial (CC BY-NC 4.0) license, which permits others to distribute, remix, adapt, build upon this work non-commercially, and license their derivative works on different terms, provided the original work is properly cited and the use is non-commercial. See: <https://creativecommons.org/licenses/by-nc/4.0/>

Country/Territory of origin: China

ORCID number: Tie-Gong Wang 0000-0001-6616-5930.

S-Editor: Wang JJ

L-Editor: A

P-Editor: Xu ZH

## REFERENCES

- 1 Bassi C, Dervenis C, Butturini G, Fingerhut A, Yeo C, Izbicke J, Neoptolemos J, Sarr M, Traverso W, Buchler M; International Study Group on Pancreatic Fistula Definition. Postoperative pancreatic fistula: an international study group (ISGPF) definition. *Surgery* 2005; **138**: 8-13 [PMID: 16003309 DOI: 10.1016/j.surg.2005.05.001]
- 2 Shrikhande SV, Sivasanker M, Vollmer CM, Friess H, Besselink MG, Fingerhut A, Yeo CJ, Fernandez-delCastillo C, Dervenis C, Halloran C, Gouma DJ, Radenkovic D, Asbun HJ, Neoptolemos JP, Izbicke JR, Lillemoe KD, Conlon KC, Fernandez-Cruz L, Montorsi M, Bockhorn M, Adham M, Charnley R, Carter R, Hackert T, Hartwig W, Miao Y, Sarr M, Bassi C, Büchler MW; International Study Group of Pancreatic Surgery (ISGPS). Pancreatic anastomosis after pancreatoduodenectomy: A position statement by the International Study Group of Pancreatic Surgery (ISGPS). *Surgery* 2017; **161**: 1221-1234 [PMID: 28027816 DOI: 10.1016/j.surg.2016.11.021]
- 3 Tzeng CW, Katz MH, Fleming JB, Lee JE, Pisters PW, Holmes HM, Varadhachary GR, Wolff RA, Abbruzzese JL, Vauthey JN, Aloia TA. Morbidity and mortality after pancreaticoduodenectomy in patients with borderline resectable type C clinical classification. *J Gastrointest Surg* 2014; **18**: 146-55; discussion 155 [PMID: 24129825 DOI: 10.1007/s11605-013-2371-6]
- 4 Globke B, Timmermann L, Klein F, Fehrenbach U, Pratschke J, Bahra M, Malinka T. Postoperative acute necrotizing pancreatitis of the pancreatic remnant (POANP): a new definition of severe pancreatitis following pancreaticoduodenectomy. *HPB (Oxford)* 2020; **22**: 445-451 [PMID: 31431414 DOI: 10.1016/j.hpb.2019.07.016]
- 5 Bannone E, Andrianello S, Marchegiani G, Masini G, Malleo G, Bassi C, Salvia R. Postoperative Acute Pancreatitis Following Pancreatoduodenectomy: A Determinant of Fistula Potentially Driven by the Intraoperative Fluid Management. *Ann Surg* 2018; **268**: 815-822 [PMID: 30004917 DOI: 10.1097/SLA.0000000000002900]
- 6 Wüster C, Shi H, Köhlbrei CM, Biesel EA, Hopt UT, Fichtner-Feigl S, Wittel UA. Pancreatic Inflammation and Proenzyme Activation Are Associated With Clinically Relevant Postoperative Pancreatic Fistulas After Pancreas Resection. *Ann Surg* 2020; **272**: 863-870 [PMID: 32833754 DOI: 10.1097/SLA.0000000000004257]
- 7 Shrikhande SV. Invited commentary: Evolving landscape of postoperative hyperamylasemia, postoperative acute pancreatitis, and postoperative pancreatic fistula: Time for a unifying definition. *Surgery* 2021; **169**: 740-741 [PMID: 33257035 DOI: 10.1016/j.surg.2020.10.024]
- 8 Ikenaga N, Ohtsuka T, Nakata K, Watanabe Y, Mori Y, Nakamura M. Clinical significance of postoperative acute pancreatitis after pancreatoduodenectomy and distal pancreatectomy. *Surgery* 2021; **169**: 732-737 [PMID: 32893007 DOI: 10.1016/j.surg.2020.06.040]
- 9 Bassi C, Marchegiani G, Dervenis C, Sarr M, Abu Hilal M, Adham M, Allen P, Andersson R, Asbun HJ, Besselink MG, Conlon K, Del Chiaro M, Falconi M, Fernandez-Cruz L, Fernandez-Del Castillo C, Fingerhut A, Friess H, Gouma DJ, Hackert T, Izbicke J, Lillemoe KD, Neoptolemos JP, Olah A, Schulick R, Shrikhande SV, Takada T, Takaori K, Traverso W, Vollmer CR, Wolfgang CL, Yeo CJ, Salvia R, Buchler M; International Study Group on Pancreatic Surgery (ISGPS). The 2016 update of the International Study Group (ISGPS) definition and grading of postoperative pancreatic fistula: 11 Years After. *Surgery* 2017; **161**: 584-591 [PMID: 28040257 DOI: 10.1016/j.surg.2016.11.014]
- 10 Moreno C, Nicaise C, Gustot T, Quertinmont E, Nagy N, Parmentier M, Louis H, Devière J. Chemokine receptor CCR5 deficiency exacerbates cerulein-induced acute pancreatitis in mice. *Am J Physiol Gastrointest Liver Physiol* 2006; **291**: G1089-G1099 [PMID: 16891300 DOI: 10.1152/ajpgi.00571.2005]
- 11 Jackson MA, Bell JT, Spector TD, Steves CJ. A heritability-based comparison of methods used to cluster 16S rRNA gene sequences into operational taxonomic units. *PeerJ* 2016; **4**: e2341 [PMID: 27635321 DOI: 10.7717/peerj.2341]
- 12 Wang Y, Sheng HF, He Y, Wu JY, Jiang YX, Tam NF, Zhou HW. Comparison of the levels of bacterial diversity in freshwater, intertidal wetland, and marine sediments by using millions of illumina tags. *Appl Environ Microbiol* 2012; **78**: 8264-8271 [PMID: 23001654 DOI: 10.1128/AEM.01821-12]
- 13 Price AL, Patterson NJ, Plenge RM, Weinblatt ME, Shadick NA, Reich D. Principal components analysis corrects for stratification in genome-wide association studies. *Nat Genet* 2006; **38**: 904-909 [PMID: 16862161 DOI: 10.1038/ng1847]
- 14 Jiang XT, Peng X, Deng GH, Sheng HF, Wang Y, Zhou HW, Tam NF. Illumina sequencing of 16S rRNA tag revealed spatial variations of bacterial communities in a mangrove wetland. *Microb Ecol* 2013; **66**: 96-104 [PMID: 23649297 DOI: 10.1007/s00248-013-0238-8]
- 15 Nahm CB, Connor SJ, Samra JS, Mittal A. Postoperative pancreatic fistula: a review of traditional and emerging concepts. *Clin Exp Gastroenterol* 2018; **11**: 105-118 [PMID: 29588609 DOI: 10.2147/CEG.S120217]
- 16 Palani Velu LK, Chandrabalan VV, Jabbar S, McMillan DC, McKay CJ, Carter CR, Jamieson NB, Dickson EJ. Serum amylase on the night of surgery predicts clinically significant pancreatic fistula after pancreaticoduodenectomy. *HPB (Oxford)* 2014; **16**: 610-619 [PMID: 24246024 DOI: 10.1111/hpb.12184]
- 17 Dalla Valle R, De Bellis M, Pedrazzi G, Lamecchi L, Bianchi G, Pellegrino C, Iaria M. Can early serum lipase measurement be routinely implemented to rule out clinically significant pancreatic fistula after pancreaticoduodenectomy? *Int J Surg* 2015; **21** Suppl 1: S50-S54 [PMID: 26118616 DOI: 10.1016/j.ijssu.2015.04.090]
- 18 Connor S. Defining post-operative pancreatitis as a new pancreatic specific complication following pancreatic resection. *HPB (Oxford)* 2016; **18**: 642-651 [PMID: 27485058 DOI: 10.1016/j.hpb.2016.05.006]
- 19 Ferreira MJ, McKenna LB, Zhang J, Reichert M, Bakir B, Buza EL, Furth EE, Bogue CW, Rustgi AK, Kaestner KH. Spontaneous Pancreatitis Caused by Tissue-Specific Gene Ablation of Hhex in Mice. *Cell Mol Gastroenterol Hepatol* 2015; **1**: 550-569 [PMID: 26740970 DOI: 10.1016/j.jcmgh.2015.06.007]



- 20 Liou GY, Döppler H, Necela B, Krishna M, Crawford HC, Raimondo M, Storz P. Macrophage-secreted cytokines drive pancreatic acinar-to-ductal metaplasia through NF- $\kappa$ B and MMPs. *J Cell Biol* 2013; **202**: 563-577 [PMID: 23918941 DOI: 10.1083/jcb.201301001]
- 21 Sawey ET, Johnson JA, Crawford HC. Matrix metalloproteinase 7 controls pancreatic acinar cell transdifferentiation by activating the Notch signaling pathway. *Proc Natl Acad Sci U S A* 2007; **104**: 19327-19332 [PMID: 18042722 DOI: 10.1073/pnas.0705953104]
- 22 Means AL, Ray KC, Singh AB, Washington MK, Whitehead RH, Harris RC Jr, Wright CV, Coffey RJ Jr, Leach SD. Overexpression of heparin-binding EGF-like growth factor in mouse pancreas results in fibrosis and epithelial metaplasia. *Gastroenterology* 2003; **124**: 1020-1036 [PMID: 12671899 DOI: 10.1053/gast.2003.50150]
- 23 da Silva L, Jiang J, Perkins C, Atanasova KR, Bray JK, Bulut G, Azevedo-Pouly A, Campbell-Thompson M, Yang X, Hakimjavadi H, Chamala S, Ratnayake R, Gharaibeh RZ, Li C, Luesch H, Schmittgen TD. Pharmacological inhibition and reversal of pancreatic acinar ductal metaplasia. *Cell Death Discov* 2022; **8**: 378 [PMID: 36055991 DOI: 10.1038/s41420-022-01165-4]
- 24 Hirota M, Murakami K, Koizumi A, Kawamura K, Yoshino Y, Takasu A, Kin R, Katayama T, Endo K, Kogure T, Meguro T, Tabata T, Satoh K. Neutrophil Infiltration and Acinar-ductal Metaplasia Are the Main Pathological Findings in Pembrolizumab-induced Pancreatitis. *Intern Med* 2022; **61**: 3675-3682 [PMID: 35527030 DOI: 10.2169/internalmedicine.9565-22]
- 25 Gaiser S, Daniluk J, Liu Y, Tsou L, Chu J, Lee W, Longnecker DS, Logsdon CD, Ji B. Intracellular activation of trypsinogen in transgenic mice induces acute but not chronic pancreatitis. *Gut* 2011; **60**: 1379-1388 [PMID: 21471572 DOI: 10.1136/gut.2010.226175]
- 26 Bai X, Zhang Q, Gao S, Lou J, Li G, Zhang Y, Ma T, Xu Y, Liang T. Duct-to-Mucosa vs Invagination for Pancreaticoduodenostomy after Pancreaticoduodenectomy: A Prospective, Randomized Controlled Trial from a Single Surgeon. *J Am Coll Surg* 2016; **222**: 10-18 [PMID: 26577499 DOI: 10.1016/j.jamcollsurg.2015.10.003]
- 27 Casadei R, Ricci C, Ingaldi C, Alberici L, De Raffele E, Minni F. Comparison of Blumgart Anastomosis with Duct-to-Mucosa Anastomosis and Invagination Pancreaticoduodenostomy After Pancreaticoduodenectomy: A Single-Center Propensity Score Matching Analysis. *J Gastrointest Surg* 2021; **25**: 411-420 [PMID: 31997074 DOI: 10.1007/s11605-020-04528-3]
- 28 Figueras J, Sabater L, Planellas P, Muñoz-Forner E, Lopez-Ben S, Falgueras L, Sala-Palau C, Albiol M, Ortega-Serrano J, Castro-Gutierrez E. Randomized clinical trial of pancreaticogastrostomy versus pancreaticojejunostomy on the rate and severity of pancreatic fistula after pancreaticoduodenectomy. *Br J Surg* 2013; **100**: 1597-1605 [PMID: 24264781 DOI: 10.1002/bjs.9252]
- 29 Vollmer CM, Trudeau M, Casciani F. Objectifying Pancreatic Fistula Risk: On the Right Track, but More yet to Do. *J Am Coll Surg* 2021; **232**: 945-947 [PMID: 33849746 DOI: 10.1016/j.jamcollsurg.2021.03.020]
- 30 Chen JS, Liu G, Li TR, Chen JY, Xu QM, Guo YZ, Li M, Yang L. Pancreatic fistula after pancreaticoduodenectomy: Risk factors and preventive strategies. *J Cancer Res Ther* 2019; **15**: 857-863 [PMID: 31436243 DOI: 10.4103/jcr.JCRT\_364\_18]
- 31 Han IW, Kim H, Heo J, Oh MG, Choi YS, Lee SE, Lim CS. Excess intraoperative fluid volume administration is associated with pancreatic fistula after pancreaticoduodenectomy: A retrospective multicenter study. *Medicine (Baltimore)* 2017; **96**: e6893 [PMID: 28562540 DOI: 10.1097/MD.00000000000006893]
- 32 Nong K, Zhang Y, Liu S, Yang Y, Sun D, Chen X. Analysis of pancreatic fistula risk in patients with laparoscopic pancreatoduodenectomy: what matters. *J Int Med Res* 2020; **48**: 300060520943422 [PMID: 33106067 DOI: 10.1177/0300060520943422]
- 33 Deng Y, Zhao B, Yang M, Li C, Zhang L. Association Between the Incidence of Pancreatic Fistula After Pancreaticoduodenectomy and the Degree of Pancreatic Fibrosis. *J Gastrointest Surg* 2018; **22**: 438-443 [PMID: 29330723 DOI: 10.1007/s11605-017-3660-2]
- 34 Umezaki N, Hashimoto D, Nakagawa S, Kitano Y, Yamamura K, Chikamoto A, Matsumura F, Baba H. Number of acinar cells at the pancreatic stump predicts pancreatic fistula after pancreaticoduodenectomy. *Surg Today* 2018; **48**: 790-795 [PMID: 29574522 DOI: 10.1007/s00595-018-1656-5]
- 35 Guo C, Xie B, Guo D. Does pancreatic duct stent placement lead to decreased postoperative pancreatic fistula rates after pancreaticoduodenectomy? A meta-analysis. *Int J Surg* 2022; **103**: 106707 [PMID: 35697324 DOI: 10.1016/j.ijsu.2022.106707]
- 36 Jais B, Rebours V, Malleo G, Salvia R, Fontana M, Muggino L, Bassi C, Manfredi R, Moran R, Lennon AM, Zaheer A, Wolfgang C, Hruban R, Marchegiani G, Fernández Del Castillo C, Brugge W, Ha Y, Kim MH, Oh D, Hirai I, Kimura W, Jang JY, Kim SW, Jung W, Kang H, Song SY, Kang CM, Lee WJ, Crippa S, Falconi M, Gomatos I, Neoptolemos J, Milanetto AC, Sperti C, Ricci C, Casadei R, Bissolati M, Balzano G, Frigerio I, Girelli R, Delhaye M, Bernier B, Wang H, Jang KT, Song DH, Huggett MT, Oppong KW, Perera L, Kopchak KV, Del Chiaro M, Segersvard R, Lee LS, Conwell D, Osvaldt A, Campos V, Aguero Garcete G, Napoleon B, Matsumoto I, Shinzaki M, Bolado F, Fernandez JM, Keane MG, Pereira SP, Acuna IA, Vaquero EC, Angiolini MR, Zerbi A, Tang J, Leong RW, Faccineto A, Morana G, Petrone MC, Arcidiacono PG, Moon JH, Choi HJ, Gill RS, Pavey D, Ouassini M, Sastre B, Spandre M, De Angelis CG, Rios-Vives MA, Concepcion-Martin M, Ikeura T, Okazaki K, Frulloni L, Messina O, Lévy P. Serosus cystic neoplasm of the pancreas: a multinational study of 2622 patients under the auspices of the International Association of Pancreatologists and European Pancreatic Club (European Study Group on Cystic Tumors of the Pancreas). *Gut* 2016; **65**: 305-312 [PMID: 26045140 DOI: 10.1136/gutjnl-2015-309638]
- 37 Patel K, Teta A, Sukhramwala P, Thoens J, Szuchmacher M, DeVito P. External pancreatic duct stent reduces pancreatic fistula: a meta-analysis and systematic review. *Int J Surg* 2014; **12**: 827-832 [PMID: 25003575 DOI: 10.1016/j.ijsu.2014.06.008]
- 38 Yoon SJ, Lee O, Jung JH, Shin SH, Heo JS, Han IW. Prophylactic octreotide for postoperative pancreatic fistula in patients with pancreatoduodenectomy: Risk-stratified analysis. *Medicine (Baltimore)* 2022; **101**: e29303 [PMID: 35665731 DOI: 10.1097/MD.00000000000029303]



Published by **Baishideng Publishing Group Inc**  
7041 Koll Center Parkway, Suite 160, Pleasanton, CA 94566, USA

**Telephone:** +1-925-3991568

**E-mail:** [office@baishideng.com](mailto:office@baishideng.com)

**Help Desk:** <https://www.f6publishing.com/helpdesk>

<https://www.wjgnet.com>

