

Basic Study

Increased density of tolerogenic dendritic cells in the small bowel mucosa of celiac patients

Tamara Vorobjova, Oivi Uiibo, Kaire Heilman, Raivo Uiibo

Tamara Vorobjova, Raivo Uiibo, Department of Immunology, Institute of Biomedicine and Translational Medicine, University of Tartu, 51014 Tartu, Estonia

Oivi Uiibo, Department of Pediatrics, University of Tartu, Tartu, Estonia, Children's Clinic of Tartu University Hospital, 51014 Tartu, Estonia

Kaire Heilman, Department of Pediatrics, University of Tartu, Tartu, Estonia, Tallinn's Children's Hospital, 13419 Tallinn, Estonia

Author contributions: Vorobjova T and Uiibo R contributed equally to the research design; Vorobjova T performed the research, including immunohistochemical and immunofluorescence studies and microscopy, and analyzed the data and wrote the paper; Uiibo O and Heilman K were responsible for the collection of clinical material, performed the gastroduodenoscopy and revised and approved the final version of the article; Uiibo R guided and supervised the research and the drafting and editing of the final revision of the article.

Supported by Grants from the Estonian Research Foundation, No. 7749 and No. 8334; EU Regional Developmental Fund; and the Estonian Ministry of Education and Research, No. SF 0180035s08 and No. IUT20-43.

Open-Access: This article is an open-access article which was selected by an in-house editor and fully peer-reviewed by external reviewers. It is distributed in accordance with the Creative Commons Attribution Non Commercial (CC BY-NC 4.0) license, which permits others to distribute, remix, adapt, build upon this work non-commercially, and license their derivative works on different terms, provided the original work is properly cited and the use is non-commercial. See: <http://creativecommons.org/licenses/by-nc/4.0/>

Correspondence to: Tamara Vorobjova, MD, PhD, Sc med, Senior Researcher, Department of Immunology, Institute of Biomedicine and Translational Medicine, University of Tartu, Ravila 19, 51014 Tartu, Estonia. tamara.vorobjova@kliinikum.ee
Telephone: +372-7-374233

Fax: +372-7-374232

Received: April 1, 2014

Peer-review started: April 2, 2014

First decision: April 28, 2014

Revised: May 15, 2014

Accepted: July 22, 2014

Article in press: July 22, 2014

Published online: January 14, 2015

Abstract

AIM: To investigate the densities of dendritic cells (DCs) and FOXP3⁺ regulatory T cells (Tregs) and their interrelations in the small bowel mucosa in untreated celiac disease (CD) patients with and without type 1 diabetes (T1D).

METHODS: Seventy-four patients (45 female, 29 male, mean age 11.1 ± 6.8 years) who underwent small bowel biopsy were studied. CD without T1D was diagnosed in 18 patients, and CD with T1D was diagnosed in 15 patients. Normal small bowel mucosa was found in two T1D patients. Thirty-nine patients (mean age 12.8 ± 4.9 years) with other diagnoses (functional dyspepsia, duodenal ulcer, erosive gastritis, etc.) formed the control group. All CD patients had partial or subtotal villous atrophy according to the Marsh classification: Marsh grade IIIa in 9, grade IIIb in 21 and grade IIIc in 3 cases. Thirty-nine patients without CD and 2 with T1D had normal small bowel mucosa (Marsh grade 0). The densities of CD11c⁺, IDO⁺, CD103⁺, Langerin (CD207⁺) DCs and FOXP3⁺ Tregs were investigated by immunohistochemistry (on paraffin-embedded specimens) and immunofluorescence (on cryostat sections) methods using a combination of mono- and double-staining. Sixty-six serum samples were tested for IgA-tissue transglutaminase (tTG) using a fully automated EliATM Celikey[®] IgA assay (Pharmacia Diagnostics, Freiburg, Germany).

RESULTS: The density of CD11c⁺ DCs was significantly increased in CD patients compared with patients with normal mucosa (21.67 ± 2.49 vs 13.58 ± 1.51 , $P = 0.007$). The numbers of FOXP3⁺ cells were significantly higher in CD patients (10.66 ± 1.50 vs 1.92 ± 0.37 , $P = 0.0002$) and in patients with CD and coexisting T1D (8.11 ± 1.64 vs 1.92 ± 0.37 , $P = 0.002$) compared with patients with normal mucosa. The density of FOXP3⁺ cells significantly correlated with the histological

grade of atrophic changes in the small bowel mucosa according to the March classification ($r = 0.62$; $P < 0.0001$) and with levels of IgA antibody ($r = 0.55$; $P < 0.0001$). The densities of IDO⁺ DCs were significantly higher in CD patients (21.6 ± 2.67 vs 6.26 ± 0.84 , $P = 0.00003$) and in patients with CD and coexisting T1D (19.08 ± 3.61 vs 6.26 ± 0.84 , $P = 0.004$) compared with patients with normal mucosa. A significant correlation was identified between the densities of IDO⁺ DCs and FOXP3⁺ T cells ($r = 0.76$; $P = 0.0001$). The mean values of CD103⁺ DCs were significantly higher in CD patients (10.66 ± 1.53 vs 6.34 ± 0.61 , $P = 0.01$) and in patients with CD and associated T1D (11.13 ± 0.72 vs 6.34 ± 0.61 , $P = 0.00002$) compared with subjects with normal small bowel mucosa. The mean value of Langerin⁺ DCs was higher in CD patients compared with persons with normal mucosa (7.4 ± 0.92 vs 5.64 ± 0.46 , $P = 0.04$).

CONCLUSION: The participation of diverse DC subsets in the pathological processes of CD and the possible involvement of tolerogenic DCs in Tregs development to maintain intestinal immunological tolerance in CD patients are revealed.

Key words: CD11c⁺, CD103⁺, IDO⁺, Langerin (CD207⁺) dendritic cells; FOXP3⁺ regulatory T cells; Small bowel mucosa; Immunohistochemistry; Immunofluorescence; Celiac disease; Type 1 diabetes; Children

© The Author(s) 2015. Published by Baishideng Publishing Group Inc. All rights reserved.

Core tip: Significantly higher densities of CD11c⁺ dendritic cells (DCs) and of tolerogenic IDO⁺, CD103⁺ and Langerin⁺ DCs in the small bowel mucosa of patients with celiac disease (CD) compared with subjects with normal small bowel mucosa were revealed using immunohistochemistry in 74 patients. This article highlights the participation of diverse DC subsets in the pathological processes in the small bowel mucosa, pointing out the importance of Langerin⁺ DCs in untreated CD patients with and without type 1 diabetes and indicating the possible involvement of tolerogenic DCs in regulatory T cells development to maintain intestinal immunological tolerance in CD patients.

Vorobjova T, Uibo O, Heilman K, Uibo R. Increased density of tolerogenic dendritic cells in the small bowel mucosa of celiac patients. *World J Gastroenterol* 2015; 21(2): 439-452 Available from: URL: <http://www.wjgnet.com/1007-9327/full/v21/i2/439.htm> DOI: <http://dx.doi.org/10.3748/wjg.v21.i2.439>

INTRODUCTION

Celiac disease (CD) is characterized by an altered immune response to ingested wheat gluten and related prolamins

in rye and barley, which leads to inflammation, villous atrophy and crypt hyperplasia in the small bowel mucosa, accompanied by an increased number of infiltrating lymphocytes in the epithelium and in the lamina propria (LP)^[1]. The generation of inflammatory and damaging T cells is governed by several control mechanisms, while intestinal dendritic cells (DCs) are the key cells that regulate which T cells become activated or deleted. In this process, regulatory T cells (Tregs) also play an important role in intestinal homeostasis^[2,3].

The role of the gut immune system is also thought to be of crucial importance in the pathogenesis of type 1 diabetes (T1D)^[4-6]. Several research groups have demonstrated a marked association between the development of T1D and preceding alterations in the small bowel mucosa, including altered gut microbiota in these patients^[4,7,8]. As a result, CD and T1D coexist more frequently compared with chance occurrence, with an average prevalence of CD among children with T1D of 4.5% (0.97%-16.4%) in 26 reports^[9].

DCs have received much attention in CD due to their strategic role in gut homeostasis by processing external antigens (including wheat proteins) and by determining tolerance to self-antigens^[10,11]. The important role of CD11c⁺CD103⁺ DCs in the induction of Tregs differentiation has been established^[12]. CD103⁺ DCs are required for the induction of tolerogenic immune responses and contribute to the control of inflammatory responses and homeostasis in the intestinal mucosa by the incremental conversion of naive T cells into FOXP3⁺ Treg cells^[13,14]. Functionally specialized CD103⁺ DCs derived from the small intestinal LP appear to be the only cells able to regulate T cells homing^[15].

In addition to the role of CD103⁺ DCs, that of indoleamine 2,3-dioxygenase (IDO) for Tregs induction was also demonstrated^[16-18]. IDO is an immunomodulatory enzyme involved in tryptophan catabolism with immunosuppressive effects that has been implicated in the control of intestinal inflammation^[17]. Higher IDO expression has been measured in intestinal biopsies from CD patients^[19].

Among the DCs covering body surfaces, either mucosa or skin, DCs carrying Langerin (CD207) proteins have received considerable interest^[20]. Langerin was originally identified as a Langerhans cell (LC)-specific C-type lectin receptor involved in antigen capture^[21]. Langerin expression is predominant in skin DCs, but Langerin-expressing DCs are also present in the mucosal tissue and can be induced by immunization and sometimes by nutrient deficiency^[22]. The expression of Langerin by CD103⁺CD11b⁺ LP DCs in the human ileum has recently been reported^[23]. However, the presence of Langerin⁺ DCs in the small bowel mucosa in pathological conditions such as CD and T1D has not yet been studied. Still, one could preclude that Langerin⁺ cells might be involved in CD pathogenesis, taking into account the fact that interleukin (IL)-15, a central cytokine in the CD mucosa^[24,25], can skew DC precursors

Table 1 Numbers, mean ages, genders and IgA-tTG positivity results of the persons studied *n* (%)

Study group	Number of persons	Age ¹ (yr)	Male		Female		IgA-tTG-positive (> 10 U/mL)
			<i>n</i>	Age ¹ (yr)	<i>n</i>	Age ¹ (yr)	
CD	18	9.9 ± 10.7	5 (28) ^b	8.3 ± 3.1	13 (72) ^b	10.5 ± 12.5	18/18 ^b
CD with T1D	15	8.5 ± 3.7	8 (53)	8.6 ± 4.8	7 (47)	8.5 ± 2.1	11/11
T1D	2	8.5 ± 6.4	2 (100)	8.5 ± 6.4	0	-	0/2
Control group	39	12.8 ± 4.9	14 (36) ^b	11.4 ± 5.9	25 (64) ^b	13.5 ± 4.3	2/35 ^b
Total	74	11.1 ± 6.8	29 (39) ^b	9.9 ± 5.2	45 (61) ^b	11.9 ± 7.6	31/66

¹Value is the mean ± SD. ^b*P* ≤ 0.01, study group *vs* control group. CD: Celiac disease; T1D: Type 1 diabetes; IgA-tTG: IgA antibody.

to differentiate into Langerin⁺ cells^[26]. In addition, we do not know how Langerin⁺ DCs are related to other DC subsets and Tregs in the human small intestinal mucosa. Because Langerin⁺ DCs are significant modulators of events in the skin, another important immunological barrier of the organism, knowledge of the function of these cells in the small intestinal mucosa may be of general importance.

In the present study, we aimed to investigate the densities of CD11c⁺ DCs, CD103⁺ DCs, IDO⁺ DCs and Langerin⁺ DCs, along with FOXP3⁺ Treg cells, in the small bowel mucosa in CD patients with and without coexisting T1D and to compare these densities with the those found in histologically normal intestinal mucosa in persons with functional dyspepsia using immunohistochemical and immunofluorescence methods.

MATERIALS AND METHODS

Study population

Seventy-four patients (45 female, 29 male, mean age 11.1 ± 6.8 years) who were admitted to the Children's Clinic of Tartu University Hospital and underwent small bowel biopsy were studied. All patients were recruited at the time of CD diagnosis. CD without T1D was diagnosed in 18 (mean age 9.9 ± 10.7 years) patients, and CD with T1D was diagnosed in 15 (mean age 8.5 ± 3.7 years) patients. Normal small bowel mucosa was found in two T1D patients with equivocal values of IgA antibodies to tissue transglutaminase (tTG, 7.0 and 9.8 U/mL, respectively; both boys, 13 and 4 years old). Because healthy persons could not be included in the control group due to ethical constraints (gastroduodenoscopy), we selected thirty-nine patients (mean age 12.8 ± 4.9 years) with other diagnoses (mainly with functional dyspepsia, duodenal ulcer and erosive gastritis) for the control group (Table 1). Diagnosis of CD was established on the basis of the European Society for Pediatric Gastroenterology, Hepatology and Nutrition (ESPGHAN) criteria^[27]. Morphologically, the small bowel mucosa was assessed according to the Marsh classification^[28] on the basis of biopsy samples taken by gastroduodenoscopy from distal duodenum.

According to this classification, all CD patients had partial or subtotal villous atrophy: a Marsh grade of IIIa was observed in 9 cases, grade IIIb in 21 cases and grade

IIIc in 3 cases. Thirty-nine patients without CD and 2 with T1D had normal small bowel mucosa (Marsh grade 0).

All patients with CD had IgA antibodies to tTG as assessed using an EliATM Celikey[®] IgA assay (Pharmacia Diagnostics, Freiburg, Germany) (mean value 414.5 ± 130.5 U/mL). In the control group, two persons with normal small bowel mucosa (a 16-year-old boy and an 8-year-old girl, both with functional dyspepsia) were positive for IgA antibodies to tTG (515.0 and 58.3 U/mL, respectively). The mean value of IgA antibodies to tTG in the control group was 17.9 ± 14.7 U/mL.

Ethics

This study complies with the Declaration of Helsinki and was approved by the Ethics Review Committee for Human Research of the University of Tartu. All studied children and/or their parents gave written informed consent to participate in the study.

Material

Small bowel biopsy from the distal duodenum was performed by gastroduodenoscopy. Two specimens were used for morphological and immunohistochemical examinations, and the third specimen was immediately quick-frozen in Tissue Tek OCT Compound (Sakura, Finetek, Finland) and stored at -80 °C for further use in immunofluorescence studies.

Immunohistochemistry on paraffin-embedded specimens

The following antibodies were used: monoclonal mouse anti-CD11c (NCL-L-CD11c-563) NovocastraTM Liquid, diluted 1:80; monoclonal mouse anti-human FOXP3 antibodies (clone 236A/E7, Abcam, Cambridge, United States), diluted 1:60 (16.6 µg/mL in 1% normal horse serum); and anti-IDO (mouse monoclonal-anti-human indoleamine 2,3-dioxygenase), clone 1F8.2 (Chemicon, Millipore Corporation), diluted 1:50.

For the detection of CD11c⁺ DCs and FOXP3⁺ T cells in the small bowel mucosa of 63 patients, double staining was used; mono-staining for IDO⁺ DCs was performed in 58 patients.

Formalin-fixed biopsy specimens of the small bowel mucosa were studied using the Avidin-Biotin method. Paraffin slides were deparaffinized, and antigen retrieval was achieved by microwave treatment in 1 mmol/L

EDTA (Scharlau Chemie S.A., pH 8.0), once at 900 W for 7 min and twice at 440 W for 5 min. After cooling for 20 min at room temperature (rt), endogenous peroxidase activity was quenched by incubating the slides for 30 min at rt in 0.5% H₂O₂-methanol. To avoid nonspecific reactions, slides were treated with 2.5% normal horse serum (Vectastain ABC Kit, Vector Laboratories, Burlingame, CA, United States) for 10 min at rt. Additionally, to block the binding of antibodies to the Fc receptor, the FcR Blocking Reagent (human, Miltenyi Biotec GmbH, Germany), diluted 1:100, was used for 10 min at 4 °C. The sections were incubated with monoclonal mouse anti-CD11c antibody for 15 min at rt, then overnight at 4 °C. We used biotinylated anti-mouse IgG (Vectastain ABC Kit, Vector Laboratories, Burlingame, CA, United States), diluted 1:200 (incubation for 30 min at rt), as the secondary antibody. The bound antibody was detected with a commercial avidin-biotin immunoperoxidase system (Vectastain ABC Kit, Vector Laboratories, Burlingame, CA, United States) according to the manufacturer's instructions, using the Vector VIP Peroxidase substrate kit (SK-4600) (incubation for 10 min) (purple-red staining). The reaction was stopped by rinsing the sections in cold water, after which staining for FOXP3 was performed using monoclonal mouse anti-human FOXP3 antibodies for 1 h at rt, followed by incubation overnight at 4 °C. After washing in 1 × Tris-buffered saline (Tris-HCl, pH 7.5), the sections were incubated with the above-mentioned secondary antibodies using the Vectastain ABC Kit (Vector Laboratories, Burlingame, CA, United States). The bound antibody was visualized using Vector SG (Vector Laboratories, Burlingame, CA, United States) as the substrate (incubation for 10 min) (blue staining). Next, the sections were immersed in cold water to stop the reaction, after which the stained tissue sections were dehydrated and mounted in Canada balsam. We used tissue sections without primary antibody (incubation with 1% horse serum) for the negative control and human tonsil sections for the positive control.

Staining for IDO⁺ DCs on paraffin sections was performed as described above; primary antibodies were incubated with the sections overnight at 4 °C. The bound antibody was detected with a commercial avidin-biotin immunoperoxidase system (Vectastain ABC Kit, Vector Laboratories, Burlingame, CA, United States) according to the manufacturer's instructions, using the Vector VIP Peroxidase substrate kit (SK-4600) (incubation for 10 min) (purple-red staining).

Immunofluorescence staining on cryostat sections

Double-staining for IDO and CD103 and for CD11c and CD103 was performed on frozen sections of the small bowel mucosa of 71 patients. Mono-staining for Langerin (CD207) on sections from the same frozen biopsies was performed for 70 patients. The 4 µm frozen sections cut with a cryomicrotome (Leica CM1950, Leica Microsystems, Germany) were mounted on SuperFrost

Plus slides (Menzel GmbH and Co KG, Braunschweig, Germany), air-dried for 1 h and used immediately. Tissue sections were fixed in 4% paraformaldehyde for 10 min at rt, followed by permeabilization with 0.3% Triton-X 100 (SERVA, Feinbiochemica, Heidelberg, Germany) in Tris buffer for 30 min at rt.

Before incubation with primary anti-IDO antibodies, endogenous biotin was blocked using the Biotin Blocking System Kit (DAKO, Cytomation, Carpinteria, United States) for 10 min at rt. Additionally, to block the binding of antibodies to the Fc receptor, the FcR Blocking Reagent (human from Miltenyi Biotec GmbH, Germany), diluted 1:100, was used on all studied sections for 10 min at 4 °C. This reagent was also used before incubation with anti-CD11c, anti-CD103 and anti-Langerin primary antibodies.

The sections were incubated with anti-IDO clone 1F8.2 (Chemicon, Millipore Corporation) monoclonal mouse-anti human IDO antibody, diluted 1:50, in TRIS buffer overnight at 4 °C in a humid chamber under coverslips. For the secondary antibody, we used biotinylated anti-mouse IgG (in horse), diluted 1:150 (Vector Laboratories, Burlingame, CA, United States), and a positive reaction was visualized after the incubation with Streptavidin-Alexa blue 350 (Invitrogen, by Life Technologies), diluted 1:100, for 1 h at rt. After that, the slides were double-stained with anti-CD103 [Integrin αE (N-19): sc-6606, Santa Cruz Biotechnology] polyclonal goat-anti-human antibody, diluted 1:50, overnight at 4 °C, followed by incubation with donkey-anti-goat-Alexa 488 (Invitrogen, by Life Technologies), diluted 1:100 and incubated for one hour at rt, as the secondary antibody.

Cryostat sections cut from the same frozen biopsies were incubated in parallel with anti-CD11c [Integrin alpha X (H-68): sc-28663, Santa Cruz Biotechnology] and polyclonal rabbit-anti-human (diluted 1:50 and incubated overnight at 4 °C), followed by incubation with anti-rabbit IgG (whole molecule) conjugated with a Cy3 (Fab') fragment sheep antibody (SIGMA-Aldrich, United States), diluted 1:100 and incubated for one hour at rt. After washing in TRIS buffer, the slides were double-stained with anti-CD103 [Integrin αE (N-19): sc-6606, Santa Cruz Biotechnology] polyclonal goat-anti-human (diluted 1:50 and incubated overnight at 4 °C), followed by incubation with donkey-anti-goat-Alexa 488 (Invitrogen, by Life Technologies), diluted 1:100 and incubated for one hour at rt, as the secondary antibody.

A separate cryostat section from the same frozen biopsy specimen was incubated with anti-Langerin (CD207) (N-14) goat-anti-human polyclonal antibody (Santa Cruz Biotechnology), diluted 1:50 and incubated overnight at 4 °C, followed by incubation with donkey-anti-Goat-Alexa 488 (Invitrogen, by Life Technologies), diluted 1:100 and incubated for one hour at rt, as the secondary antibody. After washing in TRIS buffer, the slides were mounted in TRIS-glycerol solution. The negative control was performed by omitting the primary antibody (incubation with TRIS buffer alone).

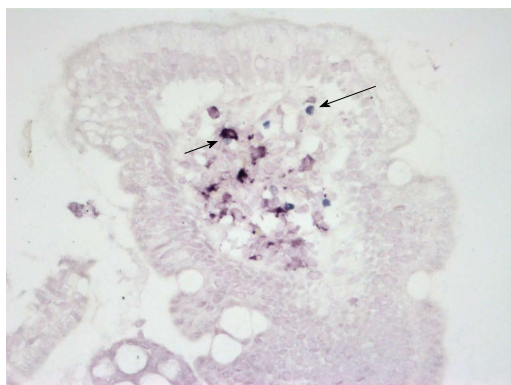


Figure 1 Double staining for CD11c (purple-red, short arrow) and FOXP3 (blue, long arrow) on a paraffin section of the small bowel mucosa. Original magnification, objective $\times 40$; eyepiece $\times 10$.

The paraffin sections were microscopically examined using a objective $\times 40$ and a eyepiece $\times 10$ in a Zeiss KF 2 transmitted light microscope (Carl Zeiss, Jena, Germany). The cryosections were examined under an immunofluorescence microscope (Olympus BX50, Japan) using objectives with magnification $\times 40$ and an eyepiece with magnification $\times 10$. The micro-photos were obtained using a Leica DM5500 B (Leica Microsystems CMS GmbH, Germany) under the same magnifications.

All sections were studied with the investigator blinded to the diagnosis data. In each of the 5 different microscopic fields, DCs positive for CD11c, CD103, IDO and Langerin, along with lymphocytes positive for FOXP3, were counted. Cell densities were expressed as the mean number of positively stained cells per field. The results of double-staining for IDO and CD11c and for CD11c and CD103 were analyzed in a similar manner.

Tissue transglutaminase IgA antibody immunoassay using the EliA™ Celikey® IgA assay.

Sixty-six sera samples were tested for IgA antibody (IgA-tTG) using a fully automated EliA™ Celikey® IgA assay (Pharmacia Diagnostics, Freiburg, Germany) according to the manufacturer's instructions. According to the manufacturer's suggestions, IgA-tTG values higher than 10 EliA U/mL were considered positive.

Statistical analysis

The results obtained for the different study groups are presented as mean \pm SE. Statistical calculations were performed using the Graph Pad Prism 5.0 software using the *t*-test, Mann-Whitney *U* test and Spearman's rank correlation test. The χ^2 or Fisher exact test was used for nominal variables.

Differences were considered statistically significant at $P < 0.05$. Sensitivity, specificity and receiver operating characteristic (ROC) curves with the areas under the curve (AUC) were calculated for different DC markers and FOXP3 using StatsDirect software.

RESULTS

Using double-staining on paraffin sections, both CD11c⁺ DCs and FOXP3⁺ Treg cells were detected in the small bowel mucosa (Figure 1).

The density of CD11c⁺ DCs was significantly increased in CD patients compared with patients with normal mucosa ($P = 0.007$) (Figure 2A). The numbers of FOXP3⁺ Tregs were significantly higher in CD patients ($P = 0.0002$) and in patients with CD and coexisting T1D ($P = 0.002$) compared with patients with normal mucosa (Figure 2B). The density of FOXP3⁺ Tregs significantly correlated with the histological grade of atrophic changes in the small bowel mucosa according to the March classification ($r = 0.62$; $P < 0.0001$) and with levels of IgA-tTG ($r = 0.55$; $P < 0.0001$) (Figure 2C and D).

IDO⁺ DCs were detected on paraffin sections by mono-staining using the avidin-biotin immunohistochemical method (Figure 3).

The densities of IDO⁺ DCs were significantly higher in CD patients ($P = 0.00003$) and in patients with CD and coexisting T1D ($P = 0.004$) compared with patients with normal mucosa (Figure 4A). This difference was dependent on the grade of atrophic and inflammatory changes in the small bowel mucosa, *e.g.*, in subtotal villous atrophy (grade IIIb, according to Marsh), the mean value of IDO⁺ DCs was 10.37 ± 1.24 *vs* 6.40 ± 1.75 in partial villous atrophy (grade IIIa; $P = 0.03$). This finding is also supported by analysis of the correlation of density of IDO⁺ DCs on paraffin sections with the histological grade of the small bowel mucosa ($r = 0.64$; $P < 0.0001$) and with levels of IgA-tTG ($r = 0.48$; $P = 0.0002$) (Figure 4B and C). A significant correlation was established between the densities of IDO⁺ DCs and FOXP3⁺ Treg cells on paraffin sections for the entire study group ($r = 0.76$; $P = 0.0001$) (Figure 4D).

To simultaneously study the densities of CD11c⁺, CD103⁺ and IDO⁺ DCs in the same tissue section, we used double immunofluorescence staining on two consecutive cryostat serial sections from the same biopsy specimen of the small bowel mucosa - one for CD103 and IDO (Figure 5A) and the other for CD103 and CD11c (Figure 5B). The mean values of CD103⁺ DCs were significantly higher in CD patients ($P = 0.01$) and in patients with CD and associated T1D ($P = 0.00002$) compared with subjects with normal small bowel mucosa (Figure 6A). The density of CD103⁺ DCs was correlated with the histological grade of small bowel mucosa atrophy ($r = 0.39$; $P = 0.0008$) (Figure 6B). A significant correlation was identified between the densities of CD103⁺ DCs and FOXP3⁺ Tregs for the entire study group ($r = 0.33$; $P = 0.0087$) (Figure 6C). The mean values of CD11c⁺, IDO⁺ and CD103⁺ DCs were significantly higher in CD patients compared with persons with normal small bowel mucosa (Figure 7).

The IDO⁺ and CD103⁺ markers were simultaneously expressed in 30% of the DCs in the LP of the bowel

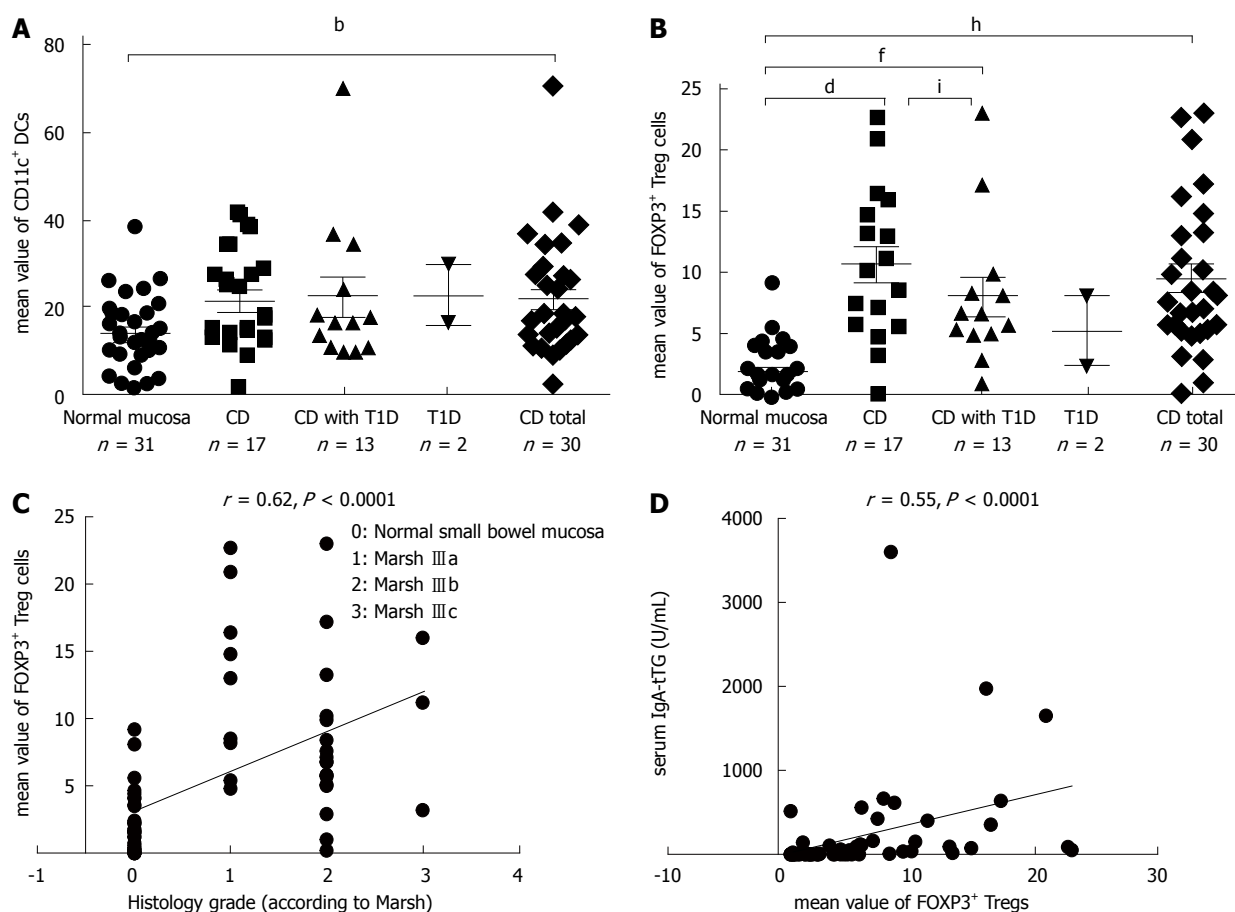


Figure 2 Density of CD11c⁺ dendritic cells (A), FOXP3⁺ regulatory T cells (B) in paraffin sections for the different study groups; Spearman's rank correlation between the histological grades (according to Marsh) and FOXP3⁺ regulatory T cells cell densities (C) or between the densities of FOXP3⁺ regulatory T cells and serum IgA-tTG levels (D) in the studied persons. ^bP < 0.01, CD total vs normal mucosa; ^dP < 0.01, CD vs normal mucosa; ⁱP < 0.01, CD with T1D vs normal mucosa; ^hP < 0.01, CD total vs normal mucosa; ⁱP value for CD vs CD with T1D not statistically significant. CD: Celiac disease; T1D: Type 1 diabetes; DC: Dendritic cell; IgA-tTG: IgA antibody; Tregs: regulatory T cells.

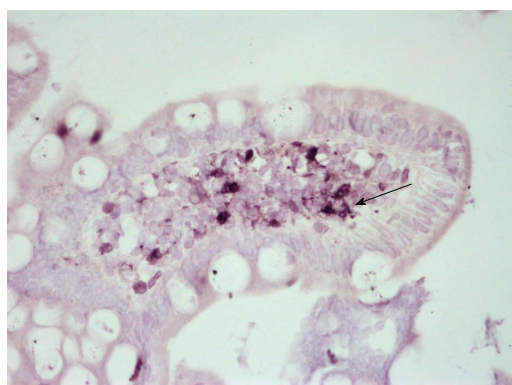


Figure 3 Positive staining for indoleamine 2,3-dioxygenase (purple-red) on a paraffin section of the small bowel mucosa. Original magnification, objective $\times 40$; eyepiece $\times 10$.

mucosa of CD patients and in 25% of the DCs in the normal mucosa. Both markers, CD11c and CD103, were expressed in 5% of the DCs in the LP of the bowel mucosa of the studied persons, with CD11c accounting for 47.5% and CD103 accounting for 47%. Double expression of CD11c and CD103 was observed in 6.5% of the DCs in the CD group compared with 4.2% of the

visualized DCs in persons with normal mucosa.

Immunofluorescence staining for Langerin on a cryostat section of the small bowel mucosa is presented in Figure 8. Langerin⁺ DCs were identified in both the LP (Figure 8A) and the epithelium of the villus of the small bowel mucosa (Figure 8B).

The mean value of Langerin⁺ DCs was higher in CD patients compared with persons with normal mucosa ($P = 0.04$; Figures 7 and 9). The correlations between Langerin⁺ DCs and CD11c⁺ DCs ($r = 0.57$; $P = 0.04$) and between Langerin⁺ DCs and CD103⁺ DCs were more pronounced in female CD patients ($r = 0.77$; $P = 0.002$).

According to the analysis of the ROC curves, FOXP3 and IDO positivity had the highest discriminative power (AUC) for both CD (AUC = 0.92 for FOXP3 and 0.88 for IDO) and CD with coexisting T1D (AUC = 0.91 for FOXP3 and 0.91 for IDO), while CD103 had also a high discriminative power for CD associated with T1D (AUC = 0.86) (Table 2 and Figure 10).

The densities of IDO⁺ DCs (6.55 ± 0.51 vs 4.67 ± 0.72), CD103⁺ (7.16 ± 0.85 vs 4.93 ± 0.65) and CD11c⁺ DCs (7.62 ± 0.43 vs 5.83 ± 0.37) were significantly higher in females compared with males ($P = 0.042$, $P = 0.04$ and $P = 0.003$, respectively). The number of Langerin⁺ DCs

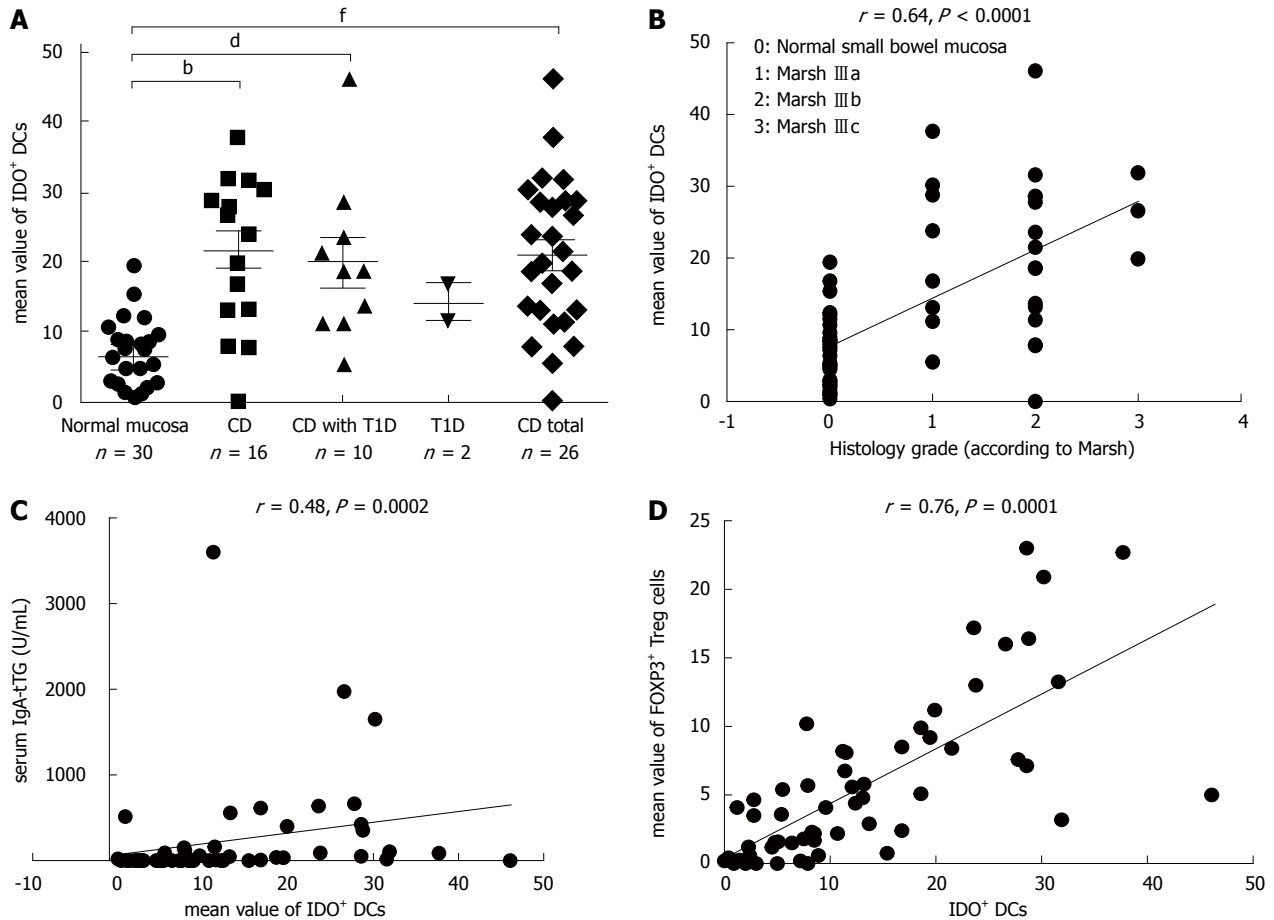


Figure 4 Densities of IDO⁺ DCs on paraffin sections for the different study groups (A); Spearman's rank correlation between the histological grades (according to Marsh) and IDO⁺ DCs (on paraffin sections) for the studied persons (B); between the densities of IDO⁺ DCs and serum IgA-tTG levels in the studied persons (C); or between the densities of IDO⁺ DCs and FOXP3⁺ Treg cells for the entire study group, evaluated on paraffin sections ($r = 0.76$; $P = 0.0001$) (D). The dots represent the mean values of positively stained cells per microscopic field. ^b $P < 0.01$, CD vs normal mucosa; ^d $P < 0.01$, CD with T1D vs normal mucosa; ^f $P < 0.01$, CD total vs normal mucosa. CD: Celiac disease; DC: Dendritic cell; T1D: Type 1 diabetes; IgA-tTG: IgA antibody; Tregs: regulatory T cells; IDO: Indoleamine 2,3-dioxygenase.

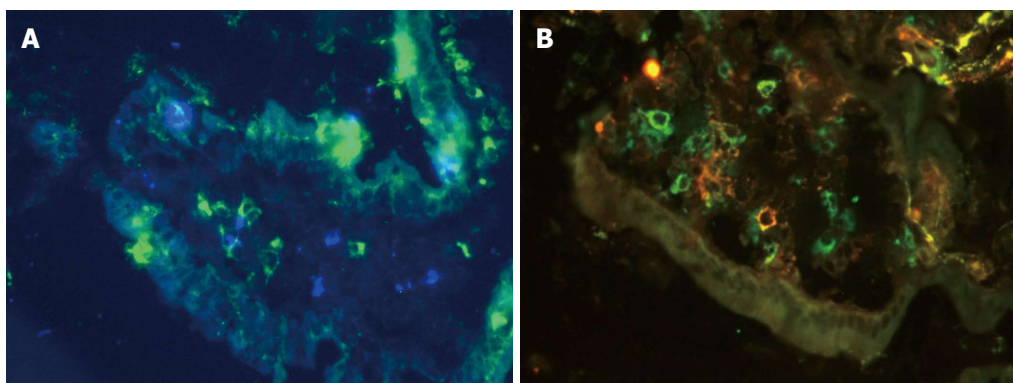


Figure 5 Double-staining for IDO (blue) and CD103 (green) (merged, A) and double-staining for CD11c (red) and CD103 (green) (merged, B) on cryostat sections of the small bowel mucosa. Original magnification, objective $\times 40$; eyepiece $\times 10$. IDO: Indoleamine 2,3-dioxygenase.

(6.27 ± 0.61 vs 4.56 ± 0.62) was also higher in females than in males ($P = 0.01$). Among all persons studied, the density of IDO⁺ DCs was significantly higher in females compared with males (8.41 ± 0.70 and 5.41 ± 0.73 , respectively; $P = 0.004$).

DISCUSSION

The main finding of this study was the significantly higher densities of CD11c⁺, tolerogenic IDO⁺, CD103⁺ and Langerin⁺ DCs in the small bowel mucosa of

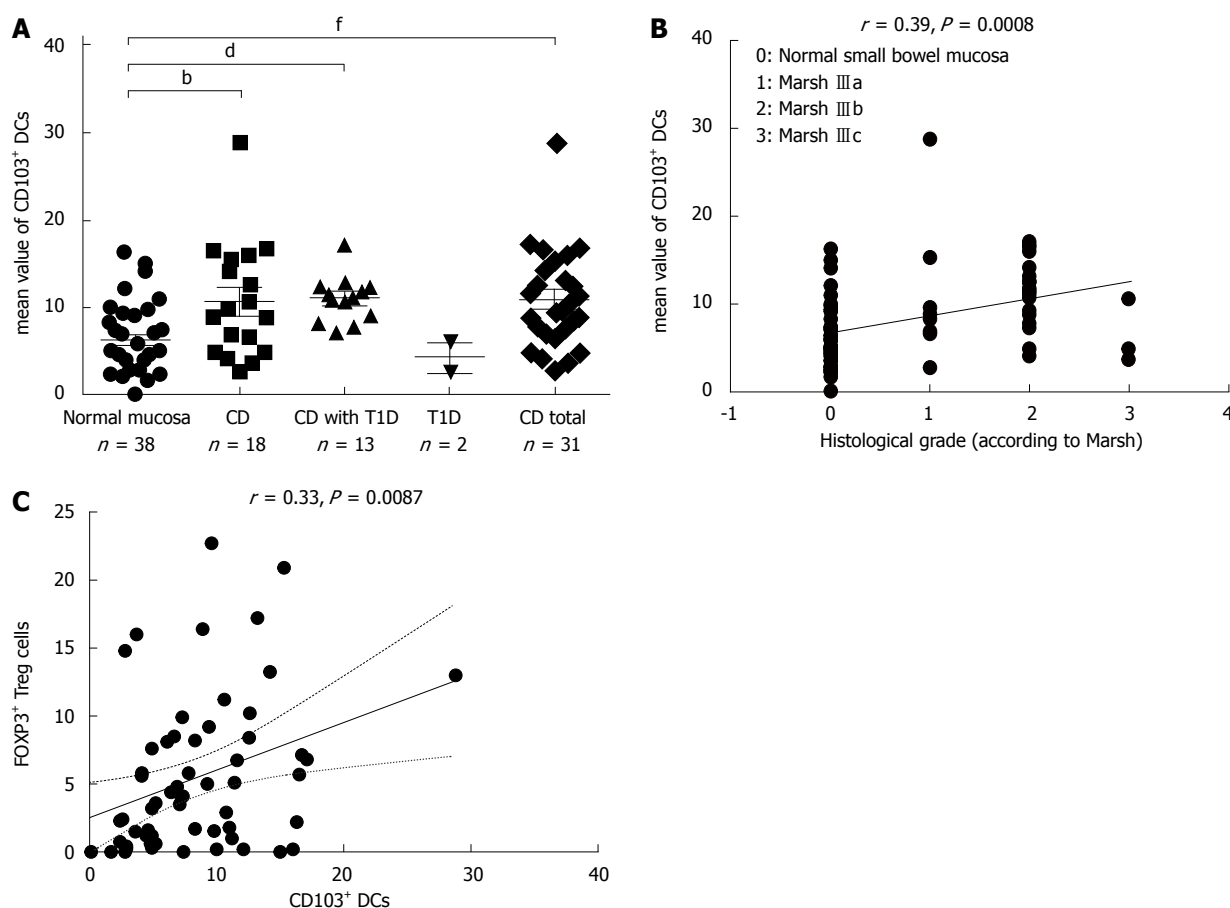


Figure 6 Densities of CD103⁺ DCs on cryostat sections for the different study groups (A); Spearman's rank correlation between the histological grades (according to Marsh) and the densities of CD103⁺ DCs for the studied persons (B); or between the densities of CD103⁺ DCs and FOXP3⁺ Treg cells for the entire study group (C). The dots represent the mean values of positively stained cells per microscopic field. ^b $P \leq 0.01$, CD vs normal mucosa; ^d $P < 0.01$, CD with T1D vs normal mucosa; ^f $P < 0.01$, CD total vs normal mucosa. CD: Celiac disease; T1D: Type 1 diabetes; DC: Dendritic cell; Tregs: regulatory T cells..

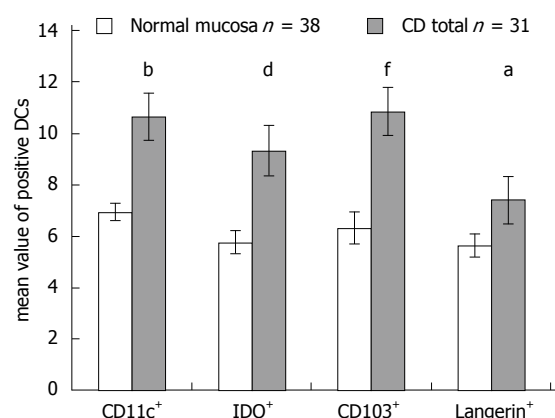


Figure 7 Mean values of CD11c⁺, IDO⁺, CD103⁺ and Langerin⁺ DCs in celiac disease patients are significantly higher compared with these values in persons with normal small bowel mucosa (according to the immunofluorescence data from cryostat sections). Columns represent the mean values of positively stained cells per microscopic field in patients with CD vs patients with normal mucosa. ^b $P < 0.01$, CD11c⁺ in patients with CD vs patients with normal mucosa; ^d $P < 0.01$, IDO⁺ in patients with CD vs patients with normal mucosa; ^f $P < 0.01$, CD103⁺ in patients with CD vs patients with normal mucosa; ^a $P < 0.05$, Langerin⁺ CD103⁺ in patients with CD vs patients with normal mucosa. CD: Celiac disease; IDO: Indoleamine 2,3-dioxygenase; DC: Dendritic cell.

patients with CD compared with subjects with normal small bowel mucosa. The densities of IDO⁺ and particularly of CD103⁺ DCs were high in CD patients with coexisting T1D, possibly demonstrating the strongest pressure on the local immune system in these patients. These results are consistent with our finding that FOXP3⁺ Tregs are present at higher densities in CD patients with and without coexisting T1D. A significant correlation between the densities of tolerogenic DCs and FOXP3⁺ Tregs in the small bowel mucosa of the persons studied might confirm the involvement of these DCs in enhanced FOXP3⁺ Tregs development.

Accumulation of CD11c⁺ DCs in celiac lesions was also observed in a study by Ráki *et al*^[29], who showed that CD11c⁺ DCs are able to activate gluten-reactive T cells. In a subsequent study, the same group of authors established that rapid accumulation of CD14⁺CD11c⁺ DCs occurred in the LP of the gut mucosa of treated patients with CD after a three-day gluten challenge and asserted that gluten-induced recruitment of these cells is specific for CD^[30]. Another study by this group demonstrated the increased density of CD163⁺CD11c⁺ DCs in celiac lesions^[31]. However, according to their

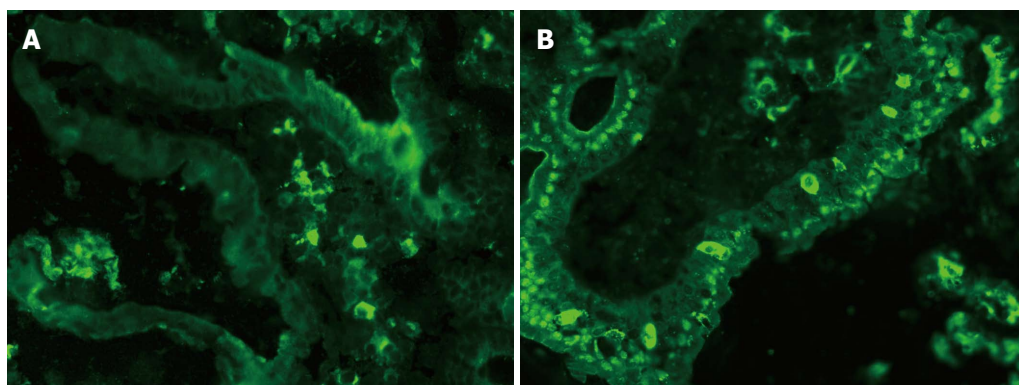


Figure 8 Staining for Langerin (CD207) on cryostat sections of the small bowel mucosa in the lamina propria (A) and in the epithelium of the villus of the small bowel mucosa (B). Original magnification, objective $\times 40$; eyepiece $\times 10$.

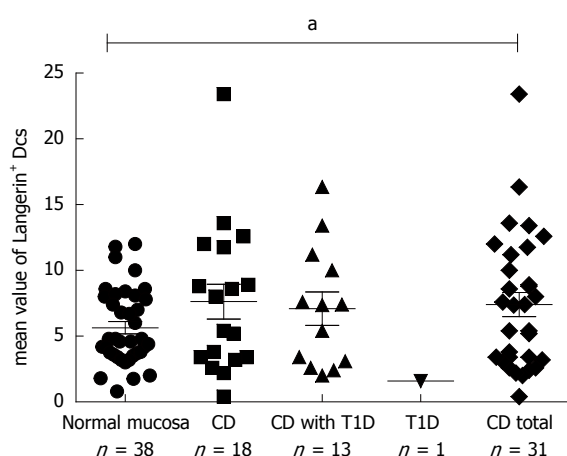


Figure 9 Densities of Langerin⁺ dendritic cells on paraffin sections for the different study groups. The dots represent the mean values of positively stained cells per microscopic field. * $P < 0.05$, CD total vs normal mucosa. CD: Celiac disease; T1D: Type 1 diabetes; DC: Dendritic cell.

results, the density of CD103⁺ DCs was decreased in CD patients. Importantly, in these studies, the study group consisted of older patients (mean age 39 years) compared with the patients in our CD group (mean age 11.1 ± 6.8 years), which might at least partly explain the discrepancies between the results of their study and ours. Thus, we believe that the increased density of CD103⁺ DCs in the proximal part of the small intestinal mucosa of CD patients, particularly those with coexisting T1D, is of pathogenic relevance.

Another important finding in our study was the significant correlation between densities of IDO⁺ DCs and FOXP3⁺ Tregs, indicating the tolerogenic capacity of IDO⁺ DCs. Moreover, 29.7% of the LP DCs were double-positive for both IDO and CD103 markers in the CD patient group. Thus, our data are in agreement with those of Matteoli *et al.*^[18], who reported that IDO expression was particularly associated with CD11c⁺ CD103⁺ DCs, both in mouse and human LP. According to these authors, IDO is involved in the capacity of CD103⁺ DCs to drive FOXP3⁺ Tregs development.

However, the study of Badami *et al.*^[32] showed

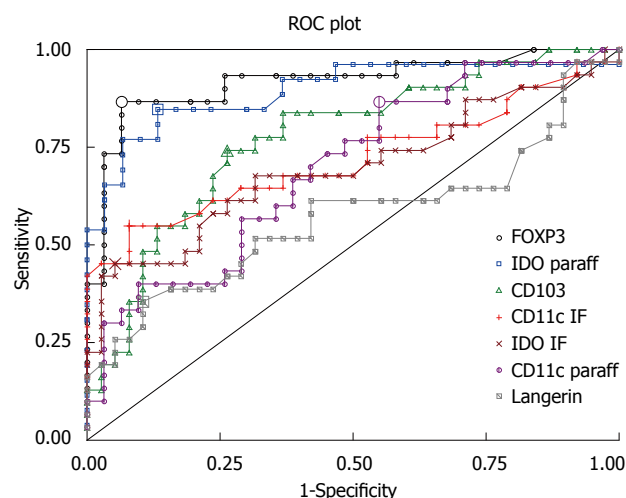


Figure 10 Receiver operating characteristic curves of dendritic cell and Tregs markers, showing their overall capacity to discriminate between individuals with and without the disease. The diagonal line represents a worthless test (sensitivity = 1 - specificity). The further the curve is from the diagonal line and the closer it is to the upper left-hand corner of the graph, the better the discriminative power of the test. CD: Celiac disease; IDO: Indoleamine 2,3-dioxygenase; ROC: Receiver operating characteristic.

that T1D patients had a reduced number of FOXP3⁺ Treg cells due to both impaired differentiation by gut-associated CD103⁺CD11c⁺ DC and their need to maintain immune tolerance for pancreatic cells. These authors did not find any difference in the amount of intestinal CD103⁺CD11c DCs in the LP between T1D patients, CD patients and controls. The discrepancy between the results in the above-mentioned study and ours could be partly explained by the different methods used in these two studies. Badami *et al.*^[32] used multiparametric fluorescent-activated sorter analysis of the cell subsets in the biopsy specimens of the studied persons and a conversion assay for the assessment of tolerogenic function of the LP DCs or blood monocyte-derived DCs *in vitro*. We performed immunohistochemical evaluations of a subpopulation of DCs and T cells in duodenal biopsy specimens. It should also be noted that their T1D group was significantly older (mean age 29

Table 2 Areas under the curve values and the cut-off, sensitivity and specificity values for different dendritic cells and Tregs markers in the groups studied

Markers	Entire study group				Patients with CD				Patients with CD and T1D			
	AUC	Cut-off	Sensitivity	Specificity	AUC	Cut-off	Sensitivity	Specificity	AUC	Cut-off	Sensitivity	Specificity
FOXP3 (paraff)	0.92	4.8	0.87	0.94	0.92	4.8	0.88	0.94	0.91	5.0	0.85	0.94
IDO (paraff)	0.89	11.2	0.85	0.87	0.88	13.1	0.81	0.93	0.91	11.2	0.90	0.87
CD11c (IF)	0.72	10.1	0.55	0.92	0.79	10.1	0.61	0.92	0.62	12.1	0.38	1.00
IDO (IF)	0.70	9.7	0.45	0.95	0.72	10.1	0.50	0.97	0.67	9.7	0.39	0.95
CD11c (paraff)	0.70	10.6	0.87	0.45	0.71	24.8	0.47	0.90	0.68	16.6	0.62	0.71
CD103 (IF)	0.77	7.8	0.74	0.74	0.71	8.8	0.61	0.76	0.86	7.3	1.00	0.68
Langerin (IF)	0.57	8.8	0.36	0.90	0.59	8.6	0.44	0.84	0.55	7.4	0.54	0.68

AUC: Area under the receiver operating characteristic curve; Cut-off: Marker value at which sensitivity and specificity are optimal; CD: Celiac disease; paraff: Immunohistochemistry on paraffin-embedded specimens; IF: Immunofluorescence staining on cryostat sections; T1D: Type 1 diabetes.

years) than our patient and control populations, which might also have influenced the results.

Similarly to other authors, we observed increased expression levels of *FOXP3* mRNA and protein in the small bowel mucosa of patients with CD with and without associated T1D in our previous study, which might indicate an imbalance between regulatory and effector mechanisms in the pathogenesis of these diseases^[33,34].

The results of the present study regarding the higher density of *FOXP3*⁺ Tregs in CD patients with and without coexisting T1D are consistent with the relevant results of other studies. Cianci *et al*^[35] reported increased Tregs in the peripheral blood and the duodenal mucosa of patients with active CD; they regarded this phenomenon as an example of an “immunological niche”, where naive T cells recruited by the gluten trigger from the peripheral blood to local mucosa tissue will differentiate into Tregs in the presence of anti-inflammatory cytokines, such as transforming growth factor (TGF)-beta and IL-10. A significant increase in the density of *FOXP3*⁺ T regs in the LP of CD patients, correlated with both the histological Marsh grade and the serum levels of transglutaminase type 2 autoantibodies, was demonstrated by Brazowski *et al*^[36]. The increased expression of *CD4*⁺*CD25*⁺*FOXP3*⁺ circulating Tregs in untreated CD patients can be explained as an attempt to quench intestinal inflammation and the immune response to dietary gluten^[37]. Borrelli *et al*^[38] reported an increased density of *FOXP3*⁺ Tregs in the duodenal mucosa and in the peripheral blood of patients with potential CD and interpreted this phenomenon as an effort by the immune system to down-regulate current inflammation and to restrict its progression toward mucosal damage through either the redistribution of *FOXP3*⁺ Tregs or their local proliferation.

In a study by Kivling *et al*^[39], children with CD with or without associated T1D had significantly higher *FOXP3* mRNA expression levels compared with children with only T1D. This difference could indicate increased Tregs-associated activity in the case of two autoimmune disorders (CD and coexisting T1D) in contrast to a single disorder of the immune system (children with only T1D). However, some studies have established

impairment of the regulatory activity of both intestinal and peripheral blood *FOXP3*⁺ Treg cells in patients with active CD^[40-42]. This phenomenon could be explained by the overproduction of IL-15, a cytokine preventing the response of effector T cells to the suppressive effects of Tregs, and partly by the overexpression of IL-15Rα in CD patients^[41,43].

There is evidence that IDO plays an important role as a suppressor of lymphocyte-mediated inflammatory responses^[17]. In our study, the number of IDO⁺ DCs was greater in the small bowel mucosa of patients with higher-grade CD, *i.e.*, grade IIIb according to the Marsh classification, compared with patients with grade III a small bowel mucosa. The high discriminative power of the IDO marker in CD patients with and without T1D established in our study also supports the above statement. This finding is in good agreement with the results of Torres *et al*^[19], who revealed high expression levels of IDO in intestinal biopsies of CD patients. Moreover, these authors observed that increased levels of interferon-gamma and tumor necrosis factor-alpha were potent inducers of IDO expression levels in CD patients. The increase in IDO activity is considered to be an attempt to control chronic antigen stimulation *via* the down-regulation of T cell-mediated autoimmunity^[19].

A central novel finding in our study was the presence of variable densities of Langerin⁺ (CD207⁺) cells in patients with normal or atrophic small bowel mucosa, pointing to their role among the other DCs of the intestinal mucosa. The presence of Langerin⁺ cells in the duodenal epithelium (Figure 8) could indicate the possibility that these cells actively participate in the transportation of antigenic material through the epithelial layer, as has been demonstrated earlier for *CD11c*⁺ DCs^[44]. The presence of different types of DCs in both the LP and the villous epithelium has also been shown by Farache *et al*^[45]. Because the density of Langerin⁺ DCs in the small bowel mucosa was significantly higher in CD patients compared with persons with normal intestinal mucosa, these cells might indeed play a specific role in CD. This difference may be due to the capacity of Langerin⁺ DCs to take up and route the antigen(s) from the epithelium into the organelles^[44]. Rochereau *et*

et al.^[46] confirmed the presence of CD11c⁺/Langerin⁺ DCs in mouse Peyer's Patches, located predominantly in the dome region, which supports their function in antigen uptake. However, Langerin⁺ DCs could be actively recruited to the CD mucosa through their binding to different sugar residues on microorganisms, and some of these interactions might be directly connected to CD development^[47]. The binding of Langerin⁺ DCs to heparin^[48], which is reactive to the disease-specific autoantigen tTG, might have an additional impact, namely because the heparin-binding residues of tTG are strong autoantigenic epitopes^[49].

One of the limitations of the study is related to a gender imbalance between the study groups, which might have an influence on the results. In female patients, the density of DCs in normal small bowel mucosa was significantly higher compared with male patients. This difference indicates that some results may have been skewed due to divergences in the composition of the study groups. However, Sankaran-Walters *et al.*^[50] showed that women have higher levels of T cell proliferation and activation and up-regulation in gene expression-related immune functions in the gut microenvironment in the absence of disease, all of which can predispose women to inflammation-associated diseases. Moreover, DC differentiation and function are regulated by the estrogen receptor ligands^[51]. Mao *et al.*^[52] reported that estrogen-dependent CD11c⁺CD11b⁺ Ly6C⁺ DCs express Langerin (CD207). Our result regarding the significant correlation between the densities of CD11c⁺ and Langerin⁺ DCs, particularly in female patients with CD, is in agreement with the finding of the above authors. Xiao *et al.*^[53] demonstrated that estrogen can induce IDO expression by DCs through suppression of T cell function *via* the IDO pathway. In our study, the higher prevalence of IDO⁺ DCs in female compared with male patients, especially in the group with normal mucosa and a mean age of 13.5 ± 4.3 years, could have already been affected by the female hormonal status, although the mean age of male subjects with normal mucosa (11.4 ± 5.8) did not differ significantly from female subjects of similar age ($P = 0.25$). Despite the gender influences, we still believe that differences in the distribution of the DC subsets in the small intestinal mucosa of CD patients and controls are significant.

Another limitation of our study is that we did not know the microbiota status of the small intestines of the studied persons. We agree that the microbiota can strongly influence and regulate the homeostasis of effector immune cells, including the distribution of different subtypes of DCs and Treg cells, along with other immunoregulatory events, in the small bowel mucosa^[5,54]. However, this factor is known to be one of the major limitations of other similar studies, unless the intestinal microbiota is studied specifically^[55]. Even in cases where it is studied, the interpretation of study results is difficult because the intestinal microbiota is dependent on different nutritional factors^[7,8].

In conclusion, we established that CD patients expressed higher densities of CD11c⁺, IDO⁺ and CD103⁺ DCs and Langerin⁺ DCs in the small bowel mucosa compared with the control persons. The densities of both FOXP3⁺ Tregs and IDO⁺ DCs were significantly increased in CD patients with and without coexisting T1D. A significant correlation was identified between the densities of CD103⁺ DCs and FOXP3⁺ Tregs and between the densities of IDO⁺ DCs and FOXP3⁺ Tregs. This finding highlights the participation of diverse DC subsets in the pathological processes of CD and indicates the possible involvement of tolerogenic DCs in Tregs development to maintain intestinal immunological tolerance in CD patients. Our results demonstrate the diversity of the mechanisms of immunoregulation and the various types of DC involvement in CD, emphasizing the importance of Langerin⁺ DCs in the small intestinal mucosa.

ACKNOWLEDGMENTS

We would like to thank Dr. Tiina Rägo from the Children's Clinic of Tartu University Hospital, Tartu, for part of the clinical material and Mrs. Anu Kaldmaa from the Department of Immunology, Institute of Biomedicine and Translational Medicine, University of Tartu, and Mrs. Merje Jakobson from the Department of Pathology, Tartu University Hospital, for their assistance with the laboratory procedures. We are grateful to Mrs. Kristi Alnek and Helis Janson from the Department of Immunology, Institute of Biomedicine and Translational Medicine, University of Tartu, for performing the tissue transglutaminase IgA-tTG immunoassay. We thank Mrs. Ülle Kirsimägi from the Surgery Department, University of Tartu, and the medical student, Helerin Raikerus, for their help with statistical analysis.

COMMENTS

Background

The role of the gut immune system is thought to be of crucial importance in the pathogenesis of celiac disease (CD) and type 1 diabetes (T1D). Several research groups have demonstrated a marked association between the development of T1D and preceding alterations in the small bowel mucosa. Dendritic cells (DCs) have received much attention in both diseases due to their strategic role in gut homeostasis by processing external antigens (including wheat proteins) and by determining tolerance to self-antigens.

Research frontiers

The important role of CD11c⁺CD103⁺ DCs and indoleamine 2,3-dioxygenase (IDO) in the induction of regulatory T cells (Tregs) differentiation have been established. In addition, DCs carrying Langerin (CD207) proteins have received considerable interest. The expression of Langerin by CD103⁺CD11b⁺ lamina propria DCs in the human ileum has recently been reported. However, the presence of Langerin⁺ DCs in the small bowel mucosa in pathological conditions such as CD and T1D has not yet been studied. We also do not know how Langerin⁺ DCs are related to other DC subsets and Tregs in the human small intestinal mucosa. Because Langerin⁺ DCs are significant modulators of events in the skin, another important immunological barrier of the organism, knowledge of the function of these cells in the small intestinal mucosa may be of general importance. This research aims to investigate the densities of CD11c⁺ DCs, CD103⁺ DCs, IDO⁺ DCs and Langerin⁺ DCs, along with FOXP3⁺ Tregs, in the

small bowel mucosa in CD patients with and without coexisting T1D and to compare these densities with those found in histologically normal intestinal mucosa in persons with functional dyspepsia using immunohistochemical and immunofluorescence methods.

Innovations and breakthroughs

The main finding of this study was the significantly higher densities of CD11c⁺, tolerogenic IDO⁺, CD103⁺ and Langerin⁺ DCs in the small bowel mucosa of patients with CD compared with subjects with normal small bowel mucosa. The densities of IDO⁺ and particularly of CD103⁺ DCs were high in CD patients with coexisting T1D, possibly demonstrating the strongest pressure on the local immune system in these patients. A significant correlation between the densities of tolerogenic DCs and FOXP3⁺ Tregs in the small bowel mucosa of the persons studied might confirm the involvement of these DCs in enhanced FOXP3⁺ Tregs development.

Applications

This finding highlights the participation of diverse DC subsets in the pathological processes of CD and indicates the possible involvement of tolerogenic DCs in Tregs development to maintain intestinal immunological tolerance in CD patients. This results demonstrate the diversity of the mechanisms of immunoregulation and the various types of DC involvement in CD, emphasizing the importance of Langerin⁺ DCs in the small intestinal mucosa.

Terminology

IDO is an immunomodulatory enzyme involved in tryptophan catabolism with immunosuppressive effects that has been implicated in the control of intestinal inflammation. Higher IDO expression has been measured in intestinal biopsies from CD patients. Langerin was originally identified as a Langerhans cell-specific C-type lectin receptor involved in antigen capture. Tolerogenic DCs are dendritic cells, predominantly CD103⁺, that are isolated from lamina propria and mesenteric lymph nodes and are able to drive the development of CD4⁺FOXP3⁺ Tregs. Tregs are a subpopulation of CD4⁺CD25⁺FOXP3⁺ T cells that modulate the immune system, mainly by immunosuppressive activity, and play an important role in intestinal homeostasis.

Peer review

The current manuscript studied DCs and FOXP3-positive Tregs and their interactions in the small bowel mucosa of patients with CD with or without T1D.

REFERENCES

- Gujral N, Freeman HJ, Thomson AB. Celiac disease: prevalence, diagnosis, pathogenesis and treatment. *World J Gastroenterol* 2012; **18**: 6036-6059 [PMID: 23155333 DOI: 10.3748/wjg.v18.i42.6036]
- Jabri B, Sollid LM. Tissue-mediated control of immunopathology in coeliac disease. *Nat Rev Immunol* 2009; **9**: 858-870 [PMID: 19935805 DOI: 10.1038/nri2670]
- Bollrath J, Powrie FM. Controlling the frontier: regulatory T-cells and intestinal homeostasis. *Semin Immunol* 2013; **25**: 352-357 [PMID: 24184013 DOI: 10.1016/j.smim.2013.09.002]
- Vaarala O. Gut and the induction of immune tolerance in type 1 diabetes. *Diabetes Metab Res Rev* 1999; **15**: 353-361 [PMID: 10585621 DOI: 10.1002/(SICI)1520-7560(199909/10)15:5<353::AID-DMRR59>3.0.CO;2-4]
- Auricchio R, Paparo F, Maglio M, Franzese A, Lombardi F, Valerio G, Nardone G, Percopo S, Greco L, Troncone R. In vitro-derived intestinal immune response to gliadin in type 1 diabetes. *Diabetes* 2004; **53**: 1680-1683 [PMID: 15220190 DOI: 10.2337/diabetes.53.7.1680]
- Uibo R, Panarina M, Teesalu K, Talja I, Sepp E, Utt M, Mikelsaar M, Heilman K, Uibo O, Vorobjova T. Celiac disease in patients with type 1 diabetes: a condition with distinct changes in intestinal immunity? *Cell Mol Immunol* 2011; **8**: 150-156 [PMID: 21317917 DOI: 10.1038/cmi.2010.66]
- Visser J, Rozing J, Sapon A, Lammers K, Fasano A. Tight junctions, intestinal permeability, and autoimmunity: celiac disease and type 1 diabetes paradigms. *Ann N Y Acad Sci* 2009; **1165**: 195-205 [PMID: 19538307 DOI: 10.1111/j.1749-6632.2009.04037.x]
- Sorini C, Falcone M. Shaping the (auto)immune response in the gut: the role of intestinal immune regulation in the prevention of type 1 diabetes. *Am J Clin Exp Immunol* 2013; **2**: 156-171 [PMID: 23885333]
- Holmes GK. Screening for coeliac disease in type 1 diabetes. *Arch Dis Child* 2002; **87**: 495-498 [PMID: 12456547 DOI: 10.1136/adc.87.6.495]
- Rescigno M, Di Sabatino A. Dendritic cells in intestinal homeostasis and disease. *J Clin Invest* 2009; **119**: 2441-2450 [PMID: 19729841 DOI: 10.1172/JCI39134]
- Lewis KL, Reizis B. Dendritic cells: arbiters of immunity and immunological tolerance. *Cold Spring Harb Perspect Biol* 2012; **4**: a007401 [PMID: 22855722 DOI: 10.1101/cshperspect.a007401]
- Iliev ID, Spadoni I, Mileti E, Matteoli G, Sonzogni A, Sampietro GM, Foschi D, Caprioli F, Viale G, Rescigno M. Human intestinal epithelial cells promote the differentiation of tolerogenic dendritic cells. *Gut* 2009; **58**: 1481-1489 [PMID: 19570762 DOI: 10.1136/gut.2008.175166]
- Scott CL, Aumeunier AM, Mowat AM. Intestinal CD103⁺ dendritic cells: master regulators of tolerance? *Trends Immunol* 2011; **32**: 412-419 [PMID: 21816673 DOI: 10.1016/j.it.2011.06.003]
- del Rio ML, Bernhardt G, Rodriguez-Barbosa JL, Förster R. Development and functional specialization of CD103⁺ dendritic cells. *Immunol Rev* 2010; **234**: 268-281 [PMID: 20193025 DOI: 10.1111/j.0105-2896.2009.00874.x]
- Stock A, Napolitani G, Cerundolo V. Intestinal DC in migrational imprinting of immune cells. *Immunol Cell Biol* 2013; **91**: 240-249 [PMID: 23295361 DOI: 10.1038/ich.2012.73]
- Munn DH, Sharma MD, Lee JR, Jhaveri KG, Johnson TS, Keskin DB, Marshall B, Chandler P, Antonia SJ, Burgess R, Slingluff CL, Mellor AL. Potential regulatory function of human dendritic cells expressing indoleamine 2,3-dioxygenase. *Science* 2002; **297**: 1867-1870 [PMID: 12228717 DOI: 10.1126/science.1073514]
- Cherayil BJ. Indoleamine 2,3-dioxygenase in intestinal immunity and inflammation. *Inflamm Bowel Dis* 2009; **15**: 1391-1396 [PMID: 19322906 DOI: 10.1002/ibd.20910]
- Matteoli G, Mazzini E, Iliev ID, Mileti E, Fallarino F, Puccetti P, Chieppa M, Rescigno M. Gut CD103⁺ dendritic cells express indoleamine 2,3-dioxygenase which influences T regulatory/T effector cell balance and oral tolerance induction. *Gut* 2010; **59**: 595-604 [PMID: 20427394 DOI: 10.1136/gut.2009.185108]
- Torres MI, López-Casado MA, Lorite P, Ríos A. Tryptophan metabolism and indoleamine 2,3-dioxygenase expression in coeliac disease. *Clin Exp Immunol* 2007; **148**: 419-424 [PMID: 17362267 DOI: 10.1111/j.1365-2249.2007.03365.x]
- Merad M, Ginhoux F, Collin M. Origin, homeostasis and function of Langerhans cells and other langerin-expressing dendritic cells. *Nat Rev Immunol* 2008; **8**: 935-947 [PMID: 19029989 DOI: 10.1038/nri2455]
- Valladeau J, Ravel O, Dezutter-Dambuyant C, Moore K, Kleijmeer M, Liu Y, Duvert-Frances V, Vincent C, Schmitt D, Davoust J, Caux C, Lebecque S, Saeland S. Langerin, a novel C-type lectin specific to Langerhans cells, is an endocytic receptor that induces the formation of Birbeck granules. *Immunity* 2000; **12**: 71-81 [PMID: 10661407]
- Chang SY, Kweon MN. Langerin-expressing dendritic cells in gut-associated lymphoid tissues. *Immunol Rev* 2010; **234**: 233-246 [PMID: 20193022 DOI: 10.1111/j.0105-2896.2009.00878.x]
- Welty NE, Staley C, Ghilardi N, Sadowsky MJ, Igyártó BZ, Kaplan DH. Intestinal lamina propria dendritic cells maintain T cell homeostasis but do not affect commensalism. *J Exp Med* 2013; **210**: 2011-2024 [PMID: 24019552 DOI: 10.1084/jem.20130728]
- Mention JJ, Ben Ahmed M, Bègue B, Barbe U, Verkarre V, Asnafi V, Colombel JF, Cugnenc PH, Ruemmele FM, McIntyre E, Brousse N, Cellier C, Cerf-Bensussan N. Interleukin 15: a key to disrupted intraepithelial lymphocyte homeostasis and lymphomagenesis in celiac disease. *Gas-*

- troenterology* 2003; **125**: 730-745 [PMID: 12949719 DOI: 10.1016/S0016-5085(03)01047-3]
- 25 **De Nitto D**, Monteleone I, Franzè E, Pallone F, Monteleone G. Involvement of interleukin-15 and interleukin-21, two gamma-chain-related cytokines, in celiac disease. *World J Gastroenterol* 2009; **15**: 4609-4614 [PMID: 19787822 DOI: 10.3748/wjg.15.4609]
 - 26 **Mohamadzadeh M**, Berard F, Essert G, Chalouni C, Puledran B, Davoust J, Bridges G, Palucka AK, Banchereau J. Interleukin 15 skews monocyte differentiation into dendritic cells with features of Langerhans cells. *J Exp Med* 2001; **194**: 1013-1020 [PMID: 11581322 DOI: 10.1084/jem.194.7.1013]
 - 27 Revised criteria for diagnosis of coeliac disease. Report of Working Group of European Society of Paediatric Gastroenterology and Nutrition. *Arch Dis Child* 1990; **65**: 909-911 [PMID: 2205160 DOI: 10.1136/ad.65.8.909]
 - 28 **Marsh MN**. Gluten, major histocompatibility complex, and the small intestine. A molecular and immunobiologic approach to the spectrum of gluten sensitivity ('celiac sprue'). *Gastroenterology* 1992; **102**: 330-354 [PMID: 1727768]
 - 29 **Råki M**, Tollefsen S, Molberg Ø, Lundin KE, Sollid LM, Jahnsen FL. A unique dendritic cell subset accumulates in the celiac lesion and efficiently activates gluten-reactive T cells. *Gastroenterology* 2006; **131**: 428-438 [PMID: 16890596 DOI: 10.1053/j.gastro.2006.06.002]
 - 30 **Beitnes AC**, Råki M, Brottveit M, Lundin KE, Jahnsen FL, Sollid LM. Rapid accumulation of CD14+CD11c+ dendritic cells in gut mucosa of celiac disease after in vivo gluten challenge. *PLoS One* 2012; **7**: e33556 [PMID: 22438948]
 - 31 **Beitnes AC**, Råki M, Lundin KE, Jahnsen J, Sollid LM, Jahnsen FL. Density of CD163+ CD11c+ dendritic cells increases and CD103+ dendritic cells decreases in the coeliac lesion. *Scand J Immunol* 2011; **74**: 186-194 [PMID: 21392045 DOI: 10.1111/j.1365-3083.2011.02549.x]
 - 32 **Badami E**, Sorini C, Coccia M, Usueli V, Molteni L, Bolla AM, Scavini M, Mariani A, King C, Bosi E, Falcone M. Defective differentiation of regulatory FoxP3+ T cells by small-intestinal dendritic cells in patients with type 1 diabetes. *Diabetes* 2011; **60**: 2120-2124 [PMID: 21646390 DOI: 10.2337/db10-1201]
 - 33 **Tiittanen M**, Westerholm-Ormio M, Verkasalo M, Savilahti E, Vaarala O. Infiltration of forkhead box P3-expressing cells in small intestinal mucosa in coeliac disease but not in type 1 diabetes. *Clin Exp Immunol* 2008; **152**: 498-507 [PMID: 18435801 DOI: 10.1111/j.1365-2249.2008.03662.x]
 - 34 **Vorobjova T**, Uibo O, Heilman K, Rågo T, Honkanen J, Vaarala O, Tillmann V, Ojakivi I, Uibo R. Increased FOXP3 expression in small-bowel mucosa of children with coeliac disease and type I diabetes mellitus. *Scand J Gastroenterol* 2009; **44**: 422-430 [PMID: 19096978 DOI: 10.1080/00365520802624177]
 - 35 **Cianci R**, Cammarota G, Frisullo G, Pagliari D, Ianiri G, Martini M, Frosali S, Plantone D, Damato V, Casciano F, Landolfi R, Paola Batocchi A, Pandolfi F. Tissue-infiltrating lymphocytes analysis reveals large modifications of the duodenal "immunological niche" in coeliac disease after gluten-free diet. *Clin Transl Gastroenterol* 2012; **3**: e28 [PMID: 23324655 DOI: 10.1038/ctg.2012.22]
 - 36 **Brazowski E**, Cohen S, Yaron A, Filip I, Eisenthal A. FOXP3 expression in duodenal mucosa in pediatric patients with celiac disease. *Pathobiology* 2010; **77**: 328-334 [PMID: 21266832 DOI: 10.1159/000322049]
 - 37 **Frisullo G**, Nociti V, Iorio R, Patanella AK, Marti A, Assunta B, Plantone D, Cammarota G, Tonali PA, Batocchi AP. Increased CD4+CD25+Foxp3+ T cells in peripheral blood of celiac disease patients: correlation with dietary treatment. *Hum Immunol* 2009; **70**: 430-435 [PMID: 19364517 DOI: 10.1016/j.humimm.2009.04.006]
 - 38 **Borrelli M**, Salvati VM, Maglio M, Zanzi D, Ferrara K, Santagata S, Ponticelli D, Aitoro R, Mazzarella G, Lania G, Gianfrani C, Auricchio R, Troncone R. Immunoregulatory pathways are active in the small intestinal mucosa of patients with potential celiac disease. *Am J Gastroenterol* 2013; **108**: 1775-1784 [PMID: 24060758 DOI: 10.1038/ajg.2013.303]
 - 39 **Kivling A**, Nilsson L, Fälth-Magnusson K, Söllvander S, Johanson C, Faresjö M. Diverse foxp3 expression in children with type 1 diabetes and celiac disease. *Ann N Y Acad Sci* 2008; **1150**: 273-277 [PMID: 19120312 DOI: 10.1196/annals.1447.018]
 - 40 **Granzotto M**, dal Bo S, Quaglia S, Tommasini A, Piscianz E, Valencic E, Ferrara F, Martellosi S, Ventura A, Not T. Regulatory T-cell function is impaired in celiac disease. *Dig Dis Sci* 2009; **54**: 1513-1519 [PMID: 18975083 DOI: 10.1007/s10620-008-0501-x]
 - 41 **Zanzi D**, Stefanile R, Santagata S, Iaffaldano L, Iaquinto G, Giardullo N, Lania G, Vigliano I, Vera AR, Ferrara K, Auricchio S, Troncone R, Mazzarella G. IL-15 interferes with suppressive activity of intestinal regulatory T cells expanded in Celiac disease. *Am J Gastroenterol* 2011; **106**: 1308-1317 [PMID: 21468011 DOI: 10.1038/ajg.2011.80]
 - 42 **Hmida NB**, Ben Ahmed M, Moussa A, Rejeb MB, Said Y, Kourda N, Meresse B, Abdeladhim M, Louzir H, Cerf-Bensussan N. Impaired control of effector T cells by regulatory T cells: a clue to loss of oral tolerance and autoimmunity in celiac disease? *Am J Gastroenterol* 2012; **107**: 604-611 [PMID: 22108452 DOI: 10.1038/ajg.2011.397]
 - 43 **Ben Ahmed M**, Belhadj Hmida N, Moes N, Buyse S, Abdeladhim M, Louzir H, Cerf-Bensussan N. IL-15 renders conventional lymphocytes resistant to suppressive functions of regulatory T cells through activation of the phosphatidylinositol 3-kinase pathway. *J Immunol* 2009; **182**: 6763-6770 [PMID: 19454671 DOI: 10.4049/jimmunol.0801792]
 - 44 **Rescigno M**, Urbano M, Valzasina B, Francolini M, Rotta G, Bonasio R, Granucci F, Kraehenbuhl JP, Ricciardi-Castagnoli P. Dendritic cells express tight junction proteins and penetrate gut epithelial monolayers to sample bacteria. *Nat Immunol* 2001; **2**: 361-367 [PMID: 11276208 DOI: 10.1038/86373]
 - 45 **Farache J**, Zigmond E, Shakhar G, Jung S. Contributions of dendritic cells and macrophages to intestinal homeostasis and immune defense. *Immunol Cell Biol* 2013; **91**: 232-239 [PMID: 23399695 DOI: 10.1038/icb.2012.79]
 - 46 **Rochereau N**, Verrier B, Pin JJ, Genin C, Paul S. Phenotypic localization of distinct DC subsets in mouse Peyer Patch. *Vaccine* 2011; **29**: 3655-3661 [PMID: 21439318 DOI: 10.1016/j.vaccine.2011.03.012]
 - 47 **Feinberg H**, Rowntree TJ, Tan SL, Drickamer K, Weis WI, Taylor ME. Common polymorphisms in human langerin change specificity for glycan ligands. *J Biol Chem* 2013; **288**: 36762-36771 [PMID: 24217250 DOI: 10.1074/jbc.M113.528000]
 - 48 **Chabrol E**, Nurisso A, Daina A, Vassal-Stermann E, Thepaut M, Girard E, Vivès RR, Fieschi F. Glycosaminoglycans are interactants of Langerin: comparison with gp120 highlights an unexpected calcium-independent binding mode. *PLoS One* 2012; **7**: e50722 [PMID: 23226363 DOI: 10.1371/journal.pone.0050722]
 - 49 **Teesalu K**, Uibo O, Uibo R, Utt M. Kinetic and functional characterisation of the heparin-binding peptides from human transglutaminase 2. *J Pept Sci* 2012; **18**: 350-356 [PMID: 22447354 DOI: 10.1002/psc.2413]
 - 50 **Sankaran-Walters S**, Macal M, Grishina I, Nagy L, Goulart L, Coolidge K, Li J, Fenton A, Williams T, Miller MK, Flamm J, Prindiville T, George M, Dandekar S. Sex differences matter in the gut: effect on mucosal immune activation and inflammation. *Biol Sex Differ* 2013; **4**: 10 [PMID: 23651648 DOI: 10.1186/2042-6410-4-10]
 - 51 **Kovats S**. Estrogen receptors regulate an inflammatory pathway of dendritic cell differentiation: mechanisms and implications for immunity. *Horm Behav* 2012; **62**: 254-262 [PMID: 22561458 DOI: 10.1016/j.yhbeh.2012.04.011]
 - 52 **Mao A**, Paharkova-Vatchkova V, Hardy J, Miller MM, Ko-

- vats S. Estrogen selectively promotes the differentiation of dendritic cells with characteristics of Langerhans cells. *J Immunol* 2005; **175**: 5146-5151 [PMID: 16210618 DOI: 10.4049/jimmunol.175.8.5146]
- 53 **Xiao BG**, Liu X, Link H. Antigen-specific T cell functions are suppressed over the estrogen-dendritic cell-indoleamine 2,3-dioxygenase axis. *Steroids* 2004; **69**: 653-659 [PMID: 15465110 DOI: 10.1016/j.steroids.2004.05.019]
- 54 **Goto Y**, Ivanov II. Intestinal epithelial cells as mediators of the commensal-host immune crosstalk. *Immunol Cell Biol* 2013; **91**: 204-214 [PMID: 23318659 DOI: 10.1038/icb.2012.80]
- 55 **Sjöberg V**, Sandström O, Hedberg M, Hammarström S, Hernell O, Hammarström ML. Intestinal T-cell responses in celiac disease - impact of celiac disease associated bacteria. *PLoS One* 2013; **8**: e53414 [PMID: 23326425 DOI: 10.1371/journal.pone.0053414]

P- Reviewer: Pessi T **S- Editor:** Ma YJ **L- Editor:** A
E- Editor: Ma S





Published by **Baishideng Publishing Group Inc**

8226 Regency Drive, Pleasanton, CA 94588, USA

Telephone: +1-925-223-8242

Fax: +1-925-223-8243

E-mail: bpgoffice@wjgnet.com

Help Desk: <http://www.wjgnet.com/esps/helpdesk.aspx>

<http://www.wjgnet.com>



ISSN 1007-9327

