

Retrospective Study

Hepatoma-derived growth factor expression as a prognostic marker in cervical cancer

Misa Song, Miki Tomoeda, Yu-Feng Jin, Chiaki Kubo, Hidenori Yoshizawa, Masanori Kitamura, Shigenori Nagata, Yukinobu Ohta, Shoji Kamiura, Hideji Nakamura, Yasuhiko Tomita

Misa Song, Miki Tomoeda, Yu-Feng Jin, Chiaki Kubo, Hidenori Yoshizawa, Masanori Kitamura, Shigenori Nagata, Yasuhiko Tomita, Department of Pathology, Osaka Medical Center for Cancer and Cardiovascular Diseases, Osaka 537-8511, Japan

Yukinobu Ohta, Shoji Kamiura, Department of Gynecology, Osaka Medical Center for Cancer and Cardiovascular Diseases, Osaka 537-8511, Japan

Hideji Nakamura, Department of Internal Medicine, Nissay Hospital, Osaka 550-0012, Japan

Author contributions: Song M contributed to the study design, data interpretation and preparation of the final manuscript; Tomoeda M, Jin YF, Kubo C, Yoshizawa H, Kitamura M and Nagata S contributed to the histological and immunohistochemical analysis; Ohta Y and Kamiura S contributed to the clinical study procedures; Nakamura H contributed to the antibody preparation and immunohistochemical analysis; Tomita Y contributed to the study design and preparation of the final manuscript; all authors read and approved the final manuscript.

Supported by The Japan Society for the Promotion of Science, No. 21590412; and The Osaka Foundation for the Prevention of Cancer and Cardiovascular Diseases

Open-Access: This article is an open-access article which was selected by an in-house editor and fully peer-reviewed by external reviewers. It is distributed in accordance with the Creative Commons Attribution Non Commercial (CC BY-NC 4.0) license, which permits others to distribute, remix, adapt, build upon this work non-commercially, and license their derivative works on different terms, provided the original work is properly cited and the use is non-commercial. See: <http://creativecommons.org/licenses/by-nc/4.0/>

Correspondence to: Yasuhiko Tomita, MD, PhD, Department of Pathology, Osaka Medical Center for Cancer and Cardiovascular Diseases, 1-3-3 Nakamichi, Higashinari-ku, Osaka 537-8511, Japan. yasuhiko-tomita@umin.ac.jp
Telephone: +81-6-69721181

Fax: +81-6-69818336

Received: January 16, 2014

Peer-review started: January 17, 2014

First decision: February 13, 2014

Revised: October 29, 2014

Accepted: October 31, 2014

Article in press: November 3, 2014

Published online: February 10, 2015

Abstract

AIM: To examine the association of hepatoma-derived growth factor (HDGF) expression with the prognosis of patients with cervical cancer of the uterus (CC).

METHODS: HDGF is a unique nuclear growth factor, and it may play an important role in the development and progression of carcinoma. HDGF expression in 88 CC patients aged 23 to 76 years (median, 54 years) was analyzed by immunohistochemistry. A rabbit polyclonal antibody against the C-terminal amino acids (aa 231-240) of the human HDGF sequence was used as primary antibody at a dilution of 1:5000. This specific anti-HDGF antibody was purified using C-terminal peptide-conjugated Sepharose columns. Staining of endothelial cells in the noncancerous areas of each specimen was used as an internal positive control. Samples with more than 80% of tumor cells showing positive immunoreactivity in both the nucleus and cytoplasm were regarded as HDGF index level 2, more than 80% positive immunoreactivity in either the nucleus or cytoplasm as level 1, and less than 80% in both the nucleus and cytoplasm as level 0. The chi-square test and Fisher's exact probability test were used to examine the relationship between HDGF expression and clinicopathologic parameters, and statistical significance was examined by the log-rank test. Multivariate analysis of factors related to survival was performed using Cox's proportional hazards regression model. Statistical significance was set at $P < 0.05$.

RESULTS: The five-year overall survival rate was 82.9%. Fourteen patients died due to tumors, nine of whom had tumor recurrence at 2-21 mo (median, 10 mo) after surgery. Tumor recurrence in five patients was determined at the time of the patients' deaths. Nineteen cases were regarded as HDGF index level 0, 11 as level 1, and 58 as level 2. Patients with level 2 expression showed higher rates of histological classification of keratinized squamous cell carcinoma

and adenosquamous carcinoma (44.8% of level 2 patients and 13.3% in levels 0 and 1), deep invasion (pT2-4 in 65.5% of level 2 patients, and 30.0% in levels 0 and 1), the presence of lymphatic invasion (50.0% in level 2, and 20.0% in levels 0 and 1), and the presence of lymph node metastasis (37.9% in level 2, and 6.7% in levels 0 and 1). Patients with an HDGF index of level 2 CC showed poorer 5-year overall survival rates than those with level 0 or 1 CC (74.0% and 100%, respectively, $P = 0.0036$). Univariate analysis revealed that histological classification ($P = 0.04$), depth of tumor invasion ($P = 0.0001$), vascular invasion ($P = 0.004$), and lymph node metastasis ($P = 0.0001$) were significant factors affecting overall survival in addition to HDGF expression. Multivariate analysis revealed HDGF expression level and lymph node metastasis as independent prognostic factors for overall survival ($P = 0.0148$ and $P = 0.0197$, respectively). The prognostic significance of HDGF was further analyzed in pT1 and pT2-4 patient groups, respectively. Among patients with pT1 CC, one the 39 analyzed patients died during the study, and no difference was observed among patients with HDGF index level 0, 1, or 2 CC. However, prognostic significance of the HDGF index was observed in the pT2-4 patient group, in which the mortality rates of patients with HDGF index level 2 CC and those with level 0 or 1 CC significantly differed ($P = 0.0463$).

CONCLUSION: The HDGF expression level is of prognostic significance in CC.

Key words: Hepatoma-derived growth factor; Prognosis; Cervical cancer; Immunohistochemical analysis; Multivariate analysis

© The Author(s) 2015. Published by Baishideng Publishing Group Inc. All rights reserved.

Core tip: Hepatoma-derived growth factor (HDGF) is a unique nuclear growth factor, playing an important role in the development and progression of carcinomas. Prognostic importance of HDGF expression has been reported in several cancers. In the present study, HDGF expression in cervical cancer was examined by immunohistochemistry, showing increased HDGF expression as a marker of deep invasion, lymphatic invasion, and lymph node metastasis. In addition, HDGF expression was an independent prognostic factor for overall survival.

Song M, Tomoeda M, Jin YF, Kubo C, Yoshizawa H, Kitamura M, Nagata S, Ohta Y, Kamiura S, Nakamura H, Tomita Y. Hepatoma-derived growth factor expression as a prognostic marker in cervical cancer. *World J Obstet Gynecol* 2015; 4(1): 16-23 Available from: URL: <http://www.wjgnet.com/2218-6220/full/v4/i1/16.htm> DOI: <http://dx.doi.org/10.5317/wjog.v4.i1.16>

INTRODUCTION

Cervical cancer of the uterus (CC) is one of the most

common carcinomas in females globally^[1,2]. Human papilloma virus infection through sexual transmission is causative of CC carcinogenesis^[3,4], and the rate of CC development in females of reproductive age is increasing worldwide^[5,6]. More than 25% of patients with CC are under 40 years of age, and its occurrence in nulliparous women is increasing^[7]. Due to the rise of mass screening, many cases of CC are detected at an early stage of the disease, and the number of curable patients is increasing^[8]. Nevertheless, it is desirable to protect the fertility of nulliparous patients and patients of child-bearing age during treatment^[5,6]. Thus, fertility-sparing surgeries, such as vaginal radical trachelectomy or abdominal radical trachelectomy, have been introduced^[9,10].

Appropriate candidates for fertility-sparing surgery are patients with tumors classified by the International Federation of Gynecology and Obstetrics (FIGO) as stage IA1 with lymphovascular space involvement, IA2, and IB1 with tumors less than 2 cm in size^[11]. In IB1 patients with tumors larger than 2 cm in size, higher risks of extrauterine spread and recurrence have been statistically demonstrated^[12]. In cases in which lymph node metastasis is diagnosed or highly suspected, the surgery should be radicalized, or chemoradiotherapy should be undertaken instead^[13].

Hepatoma-derived growth factor (HDGF) is a heparin-binding protein purified from the conditioned medium of the hepatocellular carcinoma (HCC) cell line HuH-7, which can proliferate autonomously in a serum-free chemically defined medium^[14,15]. HDGF is an acidic 26 kDa protein consisting of 230 amino acids with no hydrophobic signal sequence in its N-terminus, and it has high affinity for the glycosaminoglycans heparin and heparan sulfate^[16,17]. Exogenously supplied HDGF stimulates the proliferation of fibroblasts, endothelial cells, vascular smooth muscle cells, pulmonary epithelial cells and hepatocytes, as well as HCC, lung cancer and colon cancer cells, through the stimulation of ERK phosphorylation^[18-20]. HDGF translocates to the nucleus, and this nuclear targeting stimulates cell proliferation^[18].

Following these observations, we hypothesized that HDGF expression in human malignant tumors might influence metastasis and patient prognosis. Indeed, several reports have shown the correlation between increased HDGF expression and poor prognosis in cancers^[21-24]. However, there have been no reports evaluating the correlation of HDGF expression with CC clinicopathologic features or prognosis.

In the present study, which included 88 patients with CC who were undergoing surgery, the expression levels of HDGF and the relationship between HDGF expression and clinicopathological features and prognosis were analyzed.

MATERIALS AND METHODS

Tissue specimens

Tumor tissue was collected from 88 patients with CC who underwent surgical resection between January 1995 and March 2002 at the Gynecology Department, Osaka Medical Center for Cancer and Cardiovascular Diseases,

Osaka, Japan. Patient ages ranged from 23 to 76 years (median, 54 years). Informed consent for the use of the specimens was obtained from all patients. The surgical procedures performed included cervical conization alone in two patients, total hysterectomy alone in five, total hysterectomy plus salpingo-oophorectomy in one, total hysterectomy plus salpingo-oophorectomy plus pelvic lymph node dissection in one, modified radical hysterectomy alone in three, modified radical hysterectomy plus salpingo-oophorectomy in two, modified radical hysterectomy plus pelvic lymph node dissection in one, modified radical hysterectomy plus salpingo-oophorectomy plus pelvic lymph node dissection in one, radical hysterectomy in six, radical hysterectomy plus salpingo-oophorectomy in 52, and radical hysterectomy plus salpingo-oophorectomy plus pelvic lymph node dissection in 14. Samples obtained from uterine lesions and dissected lymph nodes were fixed in 10% formalin and routinely processed for paraffin embedding. Histologic sections cut at a thickness of 4 μ m were stained with hematoxylin and eosin, and immunoperoxidase procedures were performed [Avidin-Biotin Complex (ABC) method]. Histologic sections were reviewed by one of the authors (Tomita Y) to define the extent and mode of cancer invasion in the uterus as well as lymph node metastasis. Tumor stages were classified according to the FIGO and pTNM classification^[25].

After surgery, all samples were examined by laboratory procedures, such as routine peripheral blood cell counts, and all patients underwent chest roentgenogram, computed tomography of the abdomen, colposcopic examination, and smear cytology at 6-12-mo intervals. Neoadjuvant chemotherapy was performed in nine patients. Adjuvant therapy was performed in 57 patients, radiotherapy alone in 26 patients, chemotherapy alone in 21, and combined chemo- and radiotherapy in nine. The chemotherapeutic protocols were as follows; fluorouracil (5-FU) or its derivative alone in six patients, cisplatin (CDDP) or its derivative alone in 23, 5-FU and CDDP in one, and irinotecan in one. The follow-up period for survivors ranged from 12-145 (median, 88.2) mo. This study protocol was approved by the institutional review board of Osaka Medical Center for Cancer and Cardiovascular Diseases.

Immunohistochemical assays

Immunohistochemical studies were completed using the avidin-biotin-peroxidase complex method. Antigen retrieval was performed by heating the sections in 10 mmol/L citrate buffer (pH 6.0) for 5 min. A rabbit polyclonal antibody against the C-terminal amino acids (aa 231-240) of the human HDGF sequence was used as the primary antibody at a dilution of 1:5000. This specific anti-HDGF antibody was purified using C-terminal peptide-conjugated Sepharose columns^[16,17]. Non-immunized rabbit IgG (Vector Labs; Burlingame, CA) was used as a substitute for the primary antibody to verify the possibility of false-positive responses due to the non-specific binding of IgG or the secondary antibody. Counterstaining was performed with hematoxylin.

Specimen classification based on immunohistochemical results

All immunohistochemically stained sections were blindly examined without any prior knowledge of the clinicopathologic parameters or patient outcome. Staining of endothelial cells in the noncancerous areas of each specimen was used as an internal positive control. Consistent HDGF expression in endothelial cells has been reported^[19,20]. The HDGF expression pattern was independently evaluated in both the nucleus and cytoplasm; cells showing staining intensity similar to or stronger than that in the nucleus or cytoplasm of endothelial cells were regarded as nucleus positive or cytoplasm positive, respectively. Samples with more than 80% of tumor cells showing positive immunoreactivity in both the nucleus and cytoplasm were regarded as HDGF index level 2, more than 80% positive immunoreactivity in either the nucleus or cytoplasm as level 1, and less than 80% in both the nucleus and cytoplasm as level 0.

Statistical analysis

SAS software (Statistical Analysis System Institute, Cary, NC) was used for all statistical analyses. The chi-square test and Fisher's exact probability test were used to examine the relationship between HDGF expression and clinicopathologic parameters of prognosis. The cumulative survival rate was calculated by the Kaplan-Meier method, and statistical significance was examined by the log-rank test^[26]. Multivariate analysis of factors related to survival was performed using Cox's proportional hazards regression model^[27]. Statistical significance was set at $P < 0.05$.

RESULTS

Histologic findings

Histologically, 27 tumors were keratinizing squamous cell carcinoma, 60 were non-keratinizing squamous cell carcinoma, and one was adenosquamous carcinoma. Tumor cells invaded less than 5 mm (pT1a) in 14 patients, more than 5 mm but confined to the cervix (pT1b) in 27, beyond the uterus without parametrial invasion (pT2a) in 15, to the parametrium but not to the pelvic wall or lower third of the vagina (pT2b) in 28, to the pelvic wall or lower third of the vagina (pT3) in three, and to the mucosa of the bladder or rectum (pT4) in one. Sixty-four patients were node negative (pN0), and 24 had regional lymph node metastasis (pN1).

Patient outcome

The five-year overall survival rate was 82.9%. Fourteen patients died due to the tumors, nine of whom had tumor recurrence at 2-21 mo (median, 10 mo) after surgery. Tumor recurrence in five patients was determined at the time of the patients' deaths.

Expression of HDGF in CC

The HDGF staining pattern in CC varied; 65 cases (73.9%) showed strong staining in the nuclei of more than 80% of tumor cells and were thus regarded as nucleus positive, while 62 cases (70.5%) with strong cytoplasmic staining in

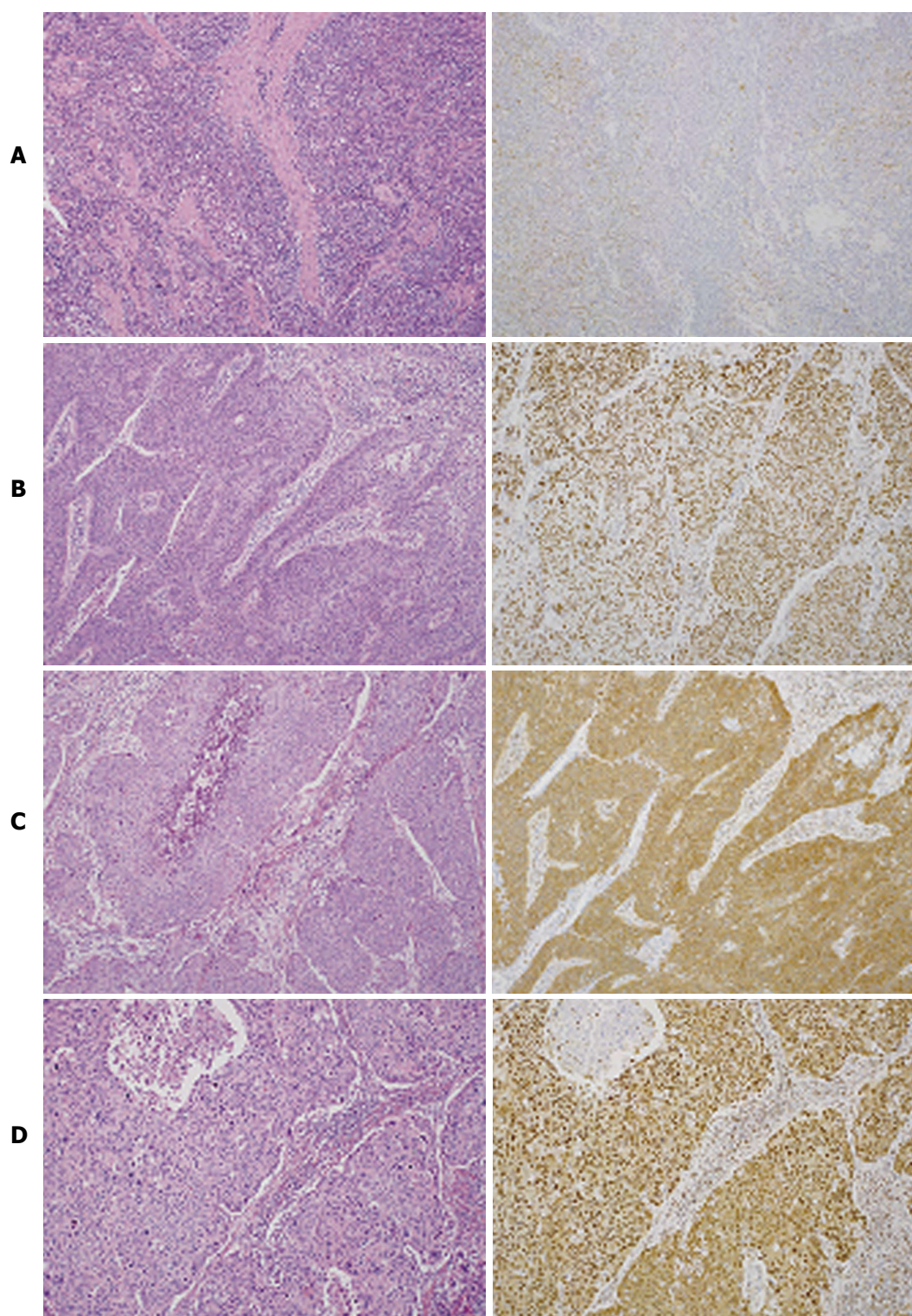


Figure 1 Hematoxylin and eosin staining (left lane) and hepatoma-derived growth factor immunohistochemistry (right lane). A: CC with HDGF index level 0. The majority of tumor cells were negatively stained for HDGF; B: CC with HDGF index level 1. More than 80% of tumor cells were positively stained in the nucleus, but negatively stained in the cytoplasm; C: CC with HDGF index level 1. More than 80% of tumor cells were positively stained in the cytoplasm, but negatively stained in the nucleus; D: CC with HDGF index level 2. More than 80% of tumor cells were positively stained in both the nucleus and cytoplasm (magnification $\times 50$). CC: Cervical cancer of the uterus; HDGF: Hepatoma-derived growth factor.

more than 80% of tumor cells were cytoplasm positive. Fifty-eight cases (65.9%) determined as both nucleus and cytoplasm positive were regarded as HDGF index level 2. Eleven cases with HDGF expression either in the nucleus or the cytoplasm were classified as HDGF index level 1

and 19 others as HDGF index level 0 (Figure 1).

The relationship between clinicopathological features and HDGF expression in CC

The correlations between HDGF tumor expression

Table 1 Correlation of hepatoma-derived growth factor expression levels with clinicopathological factors in uterine cervical cancer patients *n* (%)

Factor	Category	No. of patients <i>n</i> = 88	HDGF expression			<i>P</i> value
			Level 0 <i>n</i> = 19	Level 1 <i>n</i> = 11	Level 2 <i>n</i> = 58	
Age, yr		51.6 ± 13.8	46.7 ± 15.5	55.6 ± 12.1	52.4 ± 13.2	0.17
Histological differentiation	1: Keratinized SQ	29	2 (7)	2 (7)	25 (86)	0.037
	2: Nonkeratinized SQ	58	17 (29)	9 (16)	32 (55)	
	3: Adenosquamous carcinoma	1	0 (0)	0 (0)	1 (100)	
Lymphatic permeation	1: Absent	53	18 (34)	6 (11)	29 (55)	0.0006
	2: Present	35	1 (3)	5 (14)	29 (83)	
Vascular permeation	1: Absent	65	18 (28)	6 (9)	41 (63)	0.019
	2: Present	23	1 (4)	5 (22)	17 (74)	
Depth of invasion (pT)	1: T1	41	15 (37)	6 (15)	20 (49)	0.028
	2: T2	43	4 (9)	4 (9)	35 (81)	
	3: T3	3	0 (0)	1 (33)	2 (67)	
	4: T4	1	0 (0)	0 (0)	1 (100)	
Lymph node metastasis (pN)	1: Absent	64	12 (19)	9 (14)	36 (56)	0.0004
	2: Present	24	0 (0)	2 (8)	22 (92)	
Stage	1: I	43	15 (35)	7 (16)	21 (49)	0.014
	2: II	36	4 (11)	4 (11)	28 (88)	
	3: III	5	0 (0)	0 (0)	5 (100)	
	4: IV	4	0 (0)	0 (0)	4 (100)	
Types of surgery	1: Conization	2	2 (100)	0 (0)	0 (0)	0.0001
	2: Total hysterectomy	7	7 (100)	0 (0)	0 (0)	
	3: Modified radical hysterectomy	7	4 (57)	0 (0)	3 (43)	
	4: Radical hysterectomy	72	6 (8)	11 (15)	55 (76)	
Salpingo-oophorectomy	1: Not performed	17	12 (71)	2 (12)	3 (18)	0.0001
	2: Performed	71	7 (10)	9 (13)	55 (77)	
Pelvic lymph node dissection	1: Not performed	71	14 (20)	9 (13)	48 (68)	0.7
	2: Performed	17	5 (29)	2 (12)	10 (59)	
Adjuvant/neoadjuvant chemotherapy	1: Not performed	53	16 (30)	5 (9)	32 (60)	0.03
	2: Performed	35	3 (9)	6 (17)	26 (74)	
Adjuvant radiotherapy	1: Not performed	52	16 (31)	9 (17)	27 (52)	0.003
	2: Performed	36	3 (8)	2 (6)	31 (86)	

SQ: Squamous cell carcinoma; HDGF: Hepatoma-derived growth factor.

and clinicopathological factors are shown in Table 1. In comparison to CC with HDGF index level 0 or 1, level 2 CC showed higher rates in the following categories: histological classification of keratinized squamous cell carcinoma and adenosquamous carcinoma (44.8% of level 2 patients and 13.3% in levels 0 and 1), deep invasion (pT2-4 in 65.5% of level 2 patients and 30.0% in levels 0 and 1), the presence of lymphatic invasion (50.0% in level 2 and 20.0% in levels 0 and 1), and the presence of lymph node metastasis (37.9% in level 2 and 6.7% in levels 0 and 1).

Uni- and multivariate analyses for the prognosis of patients with CC

Patients with HDGF index level 2 CC showed poorer 5-year overall survival rates than those with level 0 or 1 CC (74.0% *vs* 100%, *P* = 0.0036; Table 2, Figure 2A). In addition to HDGF expression, univariate analyses revealed that histological classification, depth of tumor invasion, vascular invasion, and lymph node metastasis were significant factors affecting overall survival (Table 2).

Multivariate analysis of factors significant in the univariate analyses revealed that HDGF index and lymph node metastasis were independent prognostic factors for overall survival (Table 3).

The prognostic significance of HDGF was further

analyzed in pT1 and pT2-4 patient groups, respectively. Among patients with pT1 CC, one of the 39 analyzed patients died during the study, and no difference was observed among the groups. However, prognostic significance of the HDGF index was observed in the pT2-4 patient group, in which a significant difference in mortality was present between patients with HDGF index level 2 CC and those with level 0 or 1 CC (Figure 2B).

DISCUSSION

To identify optimal cutoff for the HDGF index in CC, statistical significance was examined at multiple cutoff levels, including < 50%, < 80%, < 90%, and < 100%. The prognostic significance was the greatest when the cutoff level was set at 80%. This categorization was therefore employed.

In the present study, CCs with HDGF index level 2 showed higher frequencies of deep tumor invasion (pT2-4), the presence of lymph node metastasis, and lymphatic invasion compared to level 1 and 2 cases, which are indicators of tumor progression in CC. In addition, patients with HDGF index level 2 CC showed a higher mortality rate compared with those with level 0 or 1. Previous studies have demonstrated that HDGF has a

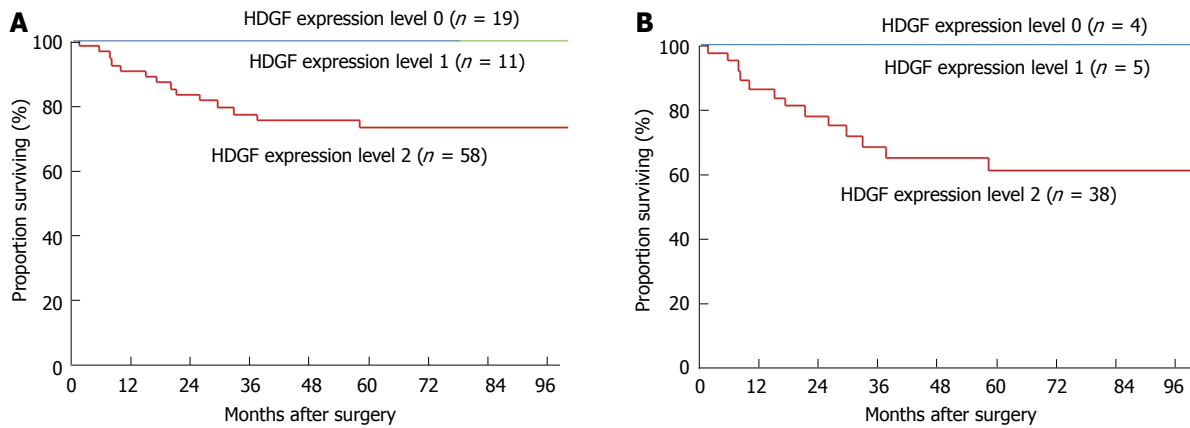


Figure 2 Overall survival curve of patients. A: Overall survival curve of patients with CC showing HDGF index levels 0, 1 and 2. Significant difference was observed between patients with HDGF index level 2 and other expression levels ($P < 0.0001$); B: Overall survival curve of patients with pT2-4 CC showing HDGF index levels 0, 1 and 2. Significant difference was observed between patients with HDGF index level 2 and other expression levels ($P = 0.0463$). CC: Cervical cancer of the uterus; HDGF: Hepatoma-derived growth factor.

Table 2 Univariate analysis of overall survival with clinicopathological factors in uterine cervical cancer patients

Factor	Category	No. of patients $n = 88$	No. of deaths $n = 14$	5-yr overall survival rate	P value
Age (yr)	1: ≤ 50	37	4	89%	0.27
	2: > 50	51	10	79%	
Histological differentiation	1: Keratinized SQ	29	5	81%	0.04 ^a
	2: Nonkeratinized SQ	58	8	85%	
	3: Adenosquamous carcinoma	1	1	0%	
Lymphatic permeation	1: Absent	53	6	88%	0.15
	2: Present	35	8	75%	
Vascular permeation	1: Absent	65	6	90%	0.005
	2: Present	23	8	63%	
Depth of invasion (pT)	1: T1	41	1	97%	0.001 ^b 0.0001 ^d
	2: T2	43	10	75%	
	3: T3	3	2	0%	
	4: T4	1	1	0%	
Lymph node metastasis (pN)	1: Absent	64	2	97%	0.0001
	2: Present	24	12	49%	
Stage	1: I	43	2	95%	0.0001 ^d
	2: II	36	4	88%	
	3: III	5	4	20%	
	4: IV	4	4	0%	
Hepatoma-derived growth factor expression	1: Level 0	19	0	100%	0.0036 ^a
	2: Level 1	11	0	100%	
	3: Level 2	58	14	74%	

^a P : 1 and 2 vs 3; ^b P : 1 vs 2-4; ^d P : 1 and 2 vs 3 and 4. SQ: Squamous cell carcinoma.

Table 3 Multivariate analysis of overall survival with clinicopathological factors in uterine cervical cancer patients

Factor	Category	χ^2 value	P value
Histological differentiation	1: Keratinized and nonkeratinized squamous cell carcinoma	0.51	0.474
	0: Adenosquamous carcinoma		
Vascular permeation	1: Absent	0.16	0.686
	0: Present		
Depth of invasion (pT)-A	1: T1	1.19	0.275
	0: T2-4		
Depth of invasion (pT)-B	1: T1 and 2	3.06	0.0801
	0: T3 and 4		
Lymph node metastasis (pN)	1: Absent	5.43	0.0197
	0: Present		
Hepatoma-derived growth factor expression	1: Level 0 and 1	5.94	0.0148
	0: Level 2		

range of biological functions, including DNA synthesis, proliferation, growth stimulating activity, and vascular development^[17-20]. The present study clearly indicates that HDGF is also involved in CC progression.

Fourteen of the 56 patients with HDGF level 2 expression died, whereas no deaths were observed among the 30 patients with HDGF level 0/1 expression. Although the distribution of patients was biased, the present results clearly indicate that HDGF expression is a useful marker to detect patients with CC who have a favorable prognosis. Indeed, multivariate analyses revealed the HDGF expression level to be an independent prognostic factor for CC. Analysis of the HDGF index together with other independent prognostic factors such as lymphatic invasion, vascular invasion, and lymph node metastasis might be a useful tool in predicting prognosis and determining appropriate therapeutic modalities for patients with CC.

Although patients with HDGF index level 0 or 1 can expect a favorable outcome after surgery, the occurrence of lymph node metastasis varied between the two groups. As patients with HDGF index level 0 CC showed no lymph node metastasis, they may be suitable for fertility-sparing surgery. In contrast, patients with HDGF index level 1 or 2 exhibited a higher risk of lymph node metastasis; thus, standard surgeries such as radical hysterectomy are more preferable when the FIGO stage is higher than IA.

In conclusion, HDGF expression, as determined by immunohistochemistry, could be used as a new prognostic factor for CC. Although further study is still needed to elucidate the precise role of HDGF in CC malignancy, our results imply that HDGF may be a useful tool for determining the appropriate treatment of CC.

COMMENTS

Background

Cervical cancer of the uterus (CC) is one of the most common carcinomas in females, and its occurrence in nulliparous women is increasing. Fertility-sparing surgeries have been introduced to these patients, therefore assessment of histological grading of tumor is important. Expression of Hepatoma-derived growth factor (HDGF) in human malignant tumors might influence metastasis and patient prognosis, and reports have shown the correlation between increased HDGF expression and poor prognosis in several cancers, however, there have been no reports evaluating the correlation of HDGF expression and clinicopathologic features and prognosis of CC.

Research frontiers

HDGF expression as determined by immunohistochemistry could be used as a new prognostic factor for CC. Although further study is still needed to elucidate the precise role of HDGF in CC malignancy, the present report might imply that HDGF may be a useful tool in determining appropriate treatment of CC.

Innovations and breakthroughs

Fertility-sparing surgery, such as vaginal radical trachelectomy or abdominal radical trachelectomy, are introduced to patients with CC with the International Federation of Gynecology and Obstetrics (FIGO) stage IA1 with lymphovascular space involvement, IA2, and IB1 with tumors less than 2 cm in size. In cases where lymph node metastasis is diagnosed or highly suspected, the surgery should be radicalized, or chemoradiotherapy should be undertaken instead. The present study showed the correlation between HDGF expression and lymph node metastasis, then HDGF immunohistochemistry might be involved in the decisionmaking of CC treatment.

Applications

Patients with HDGF index level 0 CC showed no lymph node metastasis, they are suitable for fertility-sparing surgery. In contrast, patients with HDGF index level 1 or 2 have higher risk of lymph node metastasis; thus standard surgeries such as radical hysterectomy is more preferable when the FIGO stage is higher than IA.

Terminology

HDGF: a heparin-binding protein purified from the conditioned medium of the hepatocellular carcinoma (HCC) cell line HuH-7, which can proliferate autonomously in a serum-free chemically defined medium. HDGF is an acidic 26 kDa protein consisting of 230 amino acids with no hydrophobic signal sequence in its N-terminus, and it has high affinity for the glycosaminoglycans heparin and heparan sulfate. Exogenously supplied HDGF stimulates the proliferation of fibroblasts, endothelial cells, vascular smooth muscle cells, pulmonary epithelial cells and hepatocytes, as well as HCC, lung cancer and colon cancer cells, through the stimulation of extracellular signal-regulated kinase phosphorylation. HDGF translocates to the nucleus, and this nuclear targeting stimulates cell proliferation.

Peer review

The author gives information about the expression levels of HDGF in 88 patients with cervical cancer undergoing surgery, and the relationship between HDGF expression and clinicopathological features and prognosis. The research group has great experiences in this area.

REFERENCES

- 1 Curado MP, Edwards B, Shin HR, Ferlay J, Heanue M, Boyle P, Storm H. Cancer Incidence in Five Continents, Volume IX. Lyon: IARC Scientific Publication, 2009
- 2 Park S, Bae J, Nam BH, Yoo KY. Aetiology of cancer in Asia. *Asian Pac J Cancer Prev* 2008; **9**: 371-380 [PMID: 18990005]
- 3 Steben M, Duarte-Franco E. Human papillomavirus infection: epidemiology and pathophysiology. *Gynecol Oncol* 2007; **107**: S2-S5 [PMID: 17938014 DOI: 10.1016/j.ygyno.2007.07.067]
- 4 Schiffman M, Castle PE, Jeronimo J, Rodriguez AC, Wacholder S. Human papillomavirus and cervical cancer. *Lancet* 2007; **370**: 890-907 [PMID: 17826171 DOI: 10.1016/S0140-6736(07)61416-0]
- 5 Oehler MK, Wain GV, Brand A. Gynaecological malignancies in pregnancy: a review. *Aust N Z J Obstet Gynaecol* 2003; **43**: 414-420 [PMID: 14712943 DOI: 10.1046/j.0004-8666.2003.00151.x]
- 6 Creasman WT. Cancer and pregnancy. *Ann N Y Acad Sci* 2001; **943**: 281-286 [PMID: 11594548 DOI: 10.1111/j.1749-6632.2001.tb03809.x]
- 7 Orr JW. Cervical cancer. *Surg Oncol Clin N Am* 1998; **7**: 299-316 [PMID: 9537978]
- 8 Smith RA, Cokkinides V, Brooks D, Saslow D, Brawley OW. Cancer screening in the United States, 2010: a review of current American Cancer Society guidelines and issues in cancer screening. *CA Cancer J Clin* 2010; **60**: 99-119 [PMID: 20228384 DOI: 10.3322/caac.20063]
- 9 Plante M, Gregoire J, Renaud MC, Roy M. The vaginal radical trachelectomy: an update of a series of 125 cases and 106 pregnancies. *Gynecol Oncol* 2011; **121**: 290-297 [PMID: 21255824 DOI: 10.1016/j.ygyno.2010.12.345]
- 10 Olawaiye A, Del Carmen M, Tambouret R, Goodman A, Fuller A, Duska LR. Abdominal radical trachelectomy: Success and pitfalls in a general gynecologic oncology practice. *Gynecol Oncol* 2009; **112**: 506-510 [PMID: 19131094 DOI: 10.1016/j.ygyno.2008.10.029]
- 11 Abu-Rustum NR, Sonoda Y. Fertility-sparing surgery in early-stage cervical cancer: indications and applications. *J Natl Compr Canc Netw* 2010; **8**: 1435-1438 [PMID: 21147906]
- 12 Abu-Rustum NR, Neubauer N, Sonoda Y, Park KJ, Gemignani M, Alektiar KM, Tew W, Leitao MM, Chi DS, Barakat RR. Surgical and pathologic outcomes of fertility-sparing radical abdominal trachelectomy for FIGO stage IB1 cervi-

- cal cancer. *Gynecol Oncol* 2008; **111**: 261-264 [PMID: 18708244 DOI: 10.1016/j.ygyno.2008.07.002]
- 13 **Dornhöfer N**, Höckel M. New developments in the surgical therapy of cervical carcinoma. *Ann N Y Acad Sci* 2008; **1138**: 233-252 [PMID: 18837903 DOI: 10.1196/annals.1414.029]
 - 14 **Nakamura H**, Kambe H, Egawa T, Kimura Y, Ito H, Hayashi E, Yamamoto H, Sato J, Kishimoto S. Partial purification and characterization of human hepatoma-derived growth factor. *Clin Chim Acta* 1989; **183**: 273-284 [PMID: 2553304 DOI: 10.1016/0009-8981(89)90361-6]
 - 15 **Nakamura H**, Izumoto Y, Kambe H, Kuroda T, Mori T, Kawamura K, Yamamoto H, Kishimoto T. Molecular cloning of complementary DNA for a novel human hepatoma-derived growth factor. Its homology with high mobility group-1 protein. *J Biol Chem* 1994; **269**: 25143-25149 [PMID: 7929202]
 - 16 **Izumoto Y**, Kuroda T, Harada H, Kishimoto T, Nakamura H. Hepatoma-derived growth factor belongs to a gene family in mice showing significant homology in the amino terminus. *Biochem Biophys Res Commun* 1997; **238**: 26-32 [PMID: 9299445 DOI: 10.1006/bbrc.1997.7233]
 - 17 **Enomoto H**, Yoshida K, Kishima Y, Kinoshita T, Yamamoto M, Everett AD, Miyajima A, Nakamura H. Hepatoma-derived growth factor is highly expressed in developing liver and promotes fetal hepatocyte proliferation. *Hepatology* 2002; **36**: 1519-1527 [PMID: 12447878 DOI: 10.1002/hep.1840360629]
 - 18 **Kishima Y**, Yamamoto H, Izumoto Y, Yoshida K, Enomoto H, Yamamoto M, Kuroda T, Ito H, Yoshizaki K, Nakamura H. Hepatoma-derived growth factor stimulates cell growth after translocation to the nucleus by nuclear localization signals. *J Biol Chem* 2002; **277**: 10315-10322 [PMID: 11751870 DOI: 10.1074/jbc.M111122200]
 - 19 **Everett AD**, Narron JV, Stoops T, Nakamura H, Tucker A. Hepatoma-derived growth factor is a pulmonary endothelial cell-expressed angiogenic factor. *Am J Physiol Lung Cell Mol Physiol* 2004; **286**: L1194-L1201 [PMID: 14751852 DOI: 10.1152/ajplung.00427.2003]
 - 20 **Everett AD**, Lobe DR, Matsumura ME, Nakamura H, McNamara CA. Hepatoma-derived growth factor stimulates smooth muscle cell growth and is expressed in vascular development. *J Clin Invest* 2000; **105**: 567-575 [PMID: 10712428 DOI: 10.1172/JCI7497]
 - 21 **Yoshida K**, Tomita Y, Okuda Y, Yamamoto S, Enomoto H, Uyama H, Ito H, Hoshida Y, Aozasa K, Nagano H, Sakon M, Kawase I, Monden M, Nakamura H. Hepatoma-derived growth factor is a novel prognostic factor for hepatocellular carcinoma. *Ann Surg Oncol* 2006; **13**: 159-167 [PMID: 16411141 DOI: 10.1245/ASO.2006.11.035]
 - 22 **Yamamoto S**, Tomita Y, Hoshida Y, Takiguchi S, Fujiwara Y, Yasuda T, Doki Y, Yoshida K, Aozasa K, Nakamura H, Monden M. Expression of hepatoma-derived growth factor is correlated with lymph node metastasis and prognosis of gastric carcinoma. *Clin Cancer Res* 2006; **12**: 117-122 [PMID: 16397032 DOI: 10.1158/1078-0432.CCR-05-1347]
 - 23 **Uyama H**, Tomita Y, Nakamura H, Nakamori S, Zhang B, Hoshida Y, Enomoto H, Okuda Y, Sakon M, Aozasa K, Kawase I, Hayashi N, Monden M. Hepatoma-derived growth factor is a novel prognostic factor for patients with pancreatic cancer. *Clin Cancer Res* 2006; **12**: 6043-6048 [PMID: 17062679 DOI: 10.1158/1078-0432.CCR-06-1064]
 - 24 **Yamamoto S**, Tomita Y, Hoshida Y, Morii E, Yasuda T, Doki Y, Aozasa K, Uyama H, Nakamura H, Monden M. Expression level of hepatoma-derived growth factor correlates with tumor recurrence of esophageal carcinoma. *Ann Surg Oncol* 2007; **14**: 2141-2149 [PMID: 17473954 DOI: 10.1245/s10434-007-9369-9]
 - 25 **Pecorelli S**, Zigliani L, Odicino F. Revised FIGO staging for carcinoma of the cervix. *Int J Gynaecol Obstet* 2009; **105**: 107-108 [PMID: 19342051 DOI: 10.1016/j.ijgo.2009.02.009]
 - 26 **Kaplan E**, Meier P. Non-parametric estimation for incomplete observations. *J Am Stat Assoc* 1958; **53**: 457-81 [DOI: 10.1080/01621459.1958.10501452]
 - 27 **Cox DR**. Regression models and life tables. *J R Stat Soc* 1972; **34**: 187-220

P- Reviewer: Kim SY, Rangel-Corona R **S- Editor:** Song XX
L- Editor: A **E- Editor:** Wu HL





Published by **Baishideng Publishing Group Inc**

8226 Regency Drive, Pleasanton, CA 94588, USA

Telephone: +1-925-223-8242

Fax: +1-925-223-8243

E-mail: bpgoffice@wjgnet.com

Help Desk: <http://www.wjgnet.com/esps/helpdesk.aspx>

<http://www.wjgnet.com>

