

World Journal of *Gastroenterology*

World J Gastroenterol 2017 August 28; 23(32): 5829-6008



**EDITORIAL**

- 5829** Role of tissue microenvironment resident adipocytes in colon cancer

Tabuso M, Homer-Vanniasinkam S, Adya R, Arasaraadnam RP

REVIEW

- 5836** Ophthalmic manifestations in patients with inflammatory bowel disease: A review

Troncoso LL, Biancardi AL, de Moraes Jr HV, Zaltman C

- 5849** Laparoscopic appendectomy for acute appendicitis: How to discourage surgeons using inadequate therapy

Hori T, Machimoto T, Kadokawa Y, Hata T, Ito T, Kato S, Yasukawa D, Aisu Y, Kimura Y, Sasaki M, Takamatsu Y, Kitano T, Hisamori S, Yoshimura T

- 5860** Long non-coding RNAs in hepatocellular carcinoma: Potential roles and clinical implications

Niu ZS, Niu XJ, Wang WH

MINIREVIEWS

- 5875** Nano albumin bound-paclitaxel in pancreatic cancer: Current evidences and future directions

Giordano G, Pancione M, Olivieri N, Parcesepe P, Velocci M, Di Raimo T, Coppola L, Toffoli G, D'Andrea MR

ORIGINAL ARTICLE**Basic Study**

- 5887** Comparison between tocotrienol and omeprazole on gastric growth factors in stress-exposed rats

Nur Azlina MF, Qodriyah HMS, Chua KH, Kamisah Y

- 5895** (-)-Epigallocatechin-3-gallate enhances poly I:C-induced interferon- λ 1 production and inhibits hepatitis C virus replication in hepatocytes

Wang YZ, Li JL, Wang X, Zhang T, Ho WZ

- 5904** Effects and mechanism of adenovirus-mediated phosphatase and tension homologue deleted on chromosome ten gene on collagen deposition in rat liver fibrosis

Xie SR, An JY, Zheng LB, Huo XX, Guo J, Shih D, Zhang XL

Retrospective Study

- 5913** Integrating *TYMS*, *KRAS* and *BRAF* testing in patients with metastatic colorectal cancer

Ntavatzikos A, Spathis A, Patapis P, Machairas N, Peros G, Konstantoudakis S, Leventakou D, Panayiotides IG, Karakitsos P, Koumariannou A

Clinical Trials Study

- 5925 Characterizing gastrointestinal stromal tumors and evaluating neoadjuvant imatinib by sequencing of endoscopic ultrasound-biopsies

Hedenström P, Nilsson B, Demir A, Andersson C, Enlund F, Nilsson O, Sadik R

Observational Study

- 5936 Novel predictors for lymph node metastasis in submucosal invasive colorectal carcinoma

Yim K, Won DD, Lee IK, Oh ST, Jung ES, Lee SH

- 5945 Changes with aging in gastric biomarkers levels and in biochemical factors associated with *Helicobacter pylori* infection in asymptomatic Chinese population

Shan JH, Bai XJ, Han LL, Yuan Y, Sun XF

Prospective Study

- 5954 Modified *Helicobacter* test using a new test meal and a ¹³C-urea breath test in *Helicobacter pylori* positive and negative dyspepsia patients on proton pump inhibitors

Tepeš B, Malfertheiner P, Labenz J, Aygen S

- 5962 Real time endoscopic ultrasound elastography and strain ratio in the diagnosis of solid pancreatic lesions

Okasha H, Elkholy S, El-Sayed R, Wifl MN, El-Nady M, El-Nabawi W, El-Dayem WA, Radwan MI, Farag A, El-sherif Y, Al-Gemeie E, Salman A, El-Sherbiny M, El-Mazny A, Mahdy RE

- 5969 Efficacy and safety of sofosbuvir and daclatasvir in treatment of kidney transplantation recipients with hepatitis C virus infection

Xue Y, Zhang LX, Wang L, Li T, Qu YD, Liu F

Randomized Controlled Trial

- 5977 New botanical drug, HL tablet, reduces hepatic fat as measured by magnetic resonance spectroscopy in patients with nonalcoholic fatty liver disease: A placebo-controlled, randomized, phase II trial

Jeong JY, Sohn JH, Baek YH, Cho YK, Kim Y, Kim H

Randomized Clinical Trial

- 5986 Randomized clinical trial comparing fixed-time split dosing and split dosing of oral Picosulfate regimen for bowel preparation

Jun JH, Han KH, Park JK, Seo HL, Kim YD, Lee SJ, Jun BK, Hwang MS, Park YK, Kim MJ, Cheon GJ

META-ANALYSIS

- 5994 Systematic review and meta-analysis of colon cleansing preparations in patients with inflammatory bowel disease

Restellini S, Kherad O, Bessissow T, Ménard C, Martel M, Taheri Tanjani M, Lakatos PL, Barkun AN

CASE REPORT

- 6003** Postoperative inflammation as a possible cause of portal vein thrombosis after irreversible electroporation for locally advanced pancreatic cancer

Su JJ, Su M, Xu K, Wang PF, Yan L, Lu SC, Gu WQ, Chen YL

LETTERS TO THE EDITOR

- 6007** Comment on "Efficacy and adverse events of cold *vs* hot polypectomy: A meta-analysis"

Sun HH, Huang SL, Bai Y

Contents

World Journal of Gastroenterology
Volume 23 Number 32 August 28, 2017

ABOUT COVER

Editorial board member of *World Journal of Gastroenterology*, Mitsushige Sugimoto, MD, PhD, Associate Professor, Division of Digestive Endoscopy, Shiga University of Medical Science Hospital, Otsu 520-2192, Japan

AIMS AND SCOPE

World Journal of Gastroenterology (*World J Gastroenterol*, *WJG*, print ISSN 1007-9327, online ISSN 2219-2840, DOI: 10.3748) is a peer-reviewed open access journal. *WJG* was established on October 1, 1995. It is published weekly on the 7th, 14th, 21st, and 28th each month. The *WJG* Editorial Board consists of 1375 experts in gastroenterology and hepatology from 68 countries.

The primary task of *WJG* is to rapidly publish high-quality original articles, reviews, and commentaries in the fields of gastroenterology, hepatology, gastrointestinal endoscopy, gastrointestinal surgery, hepatobiliary surgery, gastrointestinal oncology, gastrointestinal radiation oncology, gastrointestinal imaging, gastrointestinal interventional therapy, gastrointestinal infectious diseases, gastrointestinal pharmacology, gastrointestinal pathophysiology, gastrointestinal pathology, evidence-based medicine in gastroenterology, pancreatology, gastrointestinal laboratory medicine, gastrointestinal molecular biology, gastrointestinal immunology, gastrointestinal microbiology, gastrointestinal genetics, gastrointestinal translational medicine, gastrointestinal diagnostics, and gastrointestinal therapeutics. *WJG* is dedicated to become an influential and prestigious journal in gastroenterology and hepatology, to promote the development of above disciplines, and to improve the diagnostic and therapeutic skill and expertise of clinicians.

INDEXING/ABSTRACTING

World Journal of Gastroenterology (*WJG*) is now indexed in Current Contents[®]/Clinical Medicine, Science Citation Index Expanded (also known as SciSearch[®]), Journal Citation Reports[®], Index Medicus, MEDLINE, PubMed, PubMed Central and Directory of Open Access Journals. The 2017 edition of Journal Citation Reports[®] cites the 2016 impact factor for *WJG* as 3.365 (5-year impact factor: 3.176), ranking *WJG* as 29th among 79 journals in gastroenterology and hepatology (quartile in category Q2).

FLYLEAF

I-IX Editorial Board

EDITORS FOR THIS ISSUE

Responsible Assistant Editor: *Xiang Li*
Responsible Electronic Editor: *Fen-Fen Zhang*
Proofing Editor-in-Chief: *Lian-Sheng Ma*

Responsible Science Editor: *Yuan Qi*
Proofing Editorial Office Director: *Jin-Lei Wang*

NAME OF JOURNAL
World Journal of Gastroenterology

ISSN
ISSN 1007-9327 (print)
ISSN 2219-2840 (online)

LAUNCH DATE
October 1, 1995

FREQUENCY
Weekly

EDITORS-IN-CHIEF

Damian Garcia-Olmo, MD, PhD, Doctor, Professor, Surgeon, Department of Surgery, Universidad Autonoma de Madrid; Department of General Surgery, Fundacion Jimenez Diaz University Hospital, Madrid 28040, Spain

Stephen C Strom, PhD, Professor, Department of Laboratory Medicine, Division of Pathology, Karolinska Institutet, Stockholm 141-86, Sweden

Andrzej S Tarnawski, MD, PhD, DSc (Med), Professor of Medicine, Chief Gastroenterology, VA Long Beach Health Care System, University of California, Irvine, CA, 5901 E. Seventh Str., Long Beach,

CA 90822, United States

EDITORIAL BOARD MEMBERS

All editorial board members resources online at <http://www.wjgnet.com/1007-9327/editorialboard.htm>

EDITORIAL OFFICE

Jin-Lei Wang, Director
Yuan Qi, Vice Director
Ze-Mao Gong, Vice Director
World Journal of Gastroenterology
Baishideng Publishing Group Inc
7901 Stoneridge Drive, Suite 501,
Pleasanton, CA 94588, USA
Telephone: +1-925-2238242
Fax: +1-925-2238243
E-mail: editorialoffice@wjgnet.com
Help Desk: <http://www.f6publishing.com/helpdesk>
<http://www.wjgnet.com>

PUBLISHER

Baishideng Publishing Group Inc
7901 Stoneridge Drive, Suite 501,
Pleasanton, CA 94588, USA
Telephone: +1-925-2238242
Fax: +1-925-2238243
E-mail: bpoffice@wjgnet.com
Help Desk: <http://www.f6publishing.com/helpdesk>

<http://www.wjgnet.com>

PUBLICATION DATE
August 28, 2017

COPYRIGHT

© 2017 Baishideng Publishing Group Inc. Articles published by this Open-Access journal are distributed under the terms of the Creative Commons Attribution Non-commercial License, which permits use, distribution, and reproduction in any medium, provided the original work is properly cited, the use is non commercial and is otherwise in compliance with the license.

SPECIAL STATEMENT

All articles published in journals owned by the Baishideng Publishing Group (BPG) represent the views and opinions of their authors, and not the views, opinions or policies of the BPG, except where otherwise explicitly indicated.

INSTRUCTIONS TO AUTHORS

Full instructions are available online at <http://www.wjgnet.com/bpg/gerinfo/204>

ONLINE SUBMISSION
<http://www.f6publishing.com>

Observational Study

Novel predictors for lymph node metastasis in submucosal invasive colorectal carcinoma

Kwangil Yim, Daeyoun David Won, In Kyu Lee, Seong-Taek Oh, Eun Sun Jung, Sung Hak Lee

Kwangil Yim, Eun Sun Jung, Sung Hak Lee, Department of Hospital Pathology, Seoul St. Mary's Hospital, College of Medicine, The Catholic University of Korea, Seoul 137-701, South Korea

Daeyoun David Won, In Kyu Lee, Department of Surgery, Seoul St. Mary's Hospital, College of Medicine, The Catholic University of Korea, Seoul 137-701, South Korea

Seong-Taek Oh, Department of Surgery, Uijeongbu St. Mary's Hospital, College of Medicine, The Catholic University of Korea, Seoul 137-701, South Korea

ORCID number: Kwangil Yim (0000-0001-8767-9033); Daeyoun David Won (0000-0001-5227-8141); In Kyu Lee (0000-0001-9074-5214); Seong-Taek Oh (0000-0002-5962-581X); Eun Sun Jung (0000-0002-8451-939X); Sung Hak Lee (0000-0003-1020-5838).

Author contributions: Yim K, Won DD contributed equally to this work; Yim K, Won DD and Lee SH designed experiments; Yim K, Won DD, Lee IK, Oh ST, Jung ES and Lee SH performed research; Yim K and Won DD analyzed data; and Yim K and Lee SH wrote the paper.

Conflict-of-interest statement: The authors do not have any conflicts of interest to disclose.

Institutional review board statement: This study was approved by the Institutional Review Board of the Catholic University of Korea, Seoul St. Mary's Hospital, College of Medicine (KC16RISI0817).

Informed consent statement: Written informed consent was obtained by all patients.

Data sharing statement: No additional data are available.

Open-Access: This article is an open-access article which was selected by an in-house editor and fully peer-reviewed by external reviewers. It is distributed in accordance with the Creative Commons Attribution Non Commercial (CC BY-NC 4.0) license, which permits others to distribute, remix, adapt, build upon this work non-commercially, and license their derivative works on

different terms, provided the original work is properly cited and the use is non-commercial. See: <http://creativecommons.org/licenses/by-nc/4.0/>

Manuscript source: Unsolicited manuscript

Correspondence to: Sung Hak Lee, MD, PhD, Assistant Professor, Department of Hospital Pathology, Seoul St. Mary's Hospital, College of Medicine, The Catholic University of Korea, 222, Banpo-daero, Seocho-gu, Seoul 137-701, South Korea. hakjjang@catholic.ac.kr
Telephone: +82-2-22581617
Fax: +82-2-22581627

Received: May 24, 2017

Peer-review started: May 26, 2017

First decision: June 23, 2017

Revised: July 5, 2017

Accepted: August 8, 2017

Article in press: August 8, 2017

Published online: August 28, 2017

Abstract

AIM

To evaluate a novel grading system to predict lymph node metastasis (LNM) in patients with submucosal invasive colorectal carcinoma (SICRC).

METHODS

We analyzed the associations between LNM and various clinicopathological features in 252 patients with SICRC who had undergone radical surgery at the Seoul Saint Mary's hospital between 2000 and 2015.

RESULTS

LNM was observed in 31 patients (12.3%). The depth and width of the submucosal invasion, lymphatic invasion, tumor budding, and the presence of poorly differentiated clusters (PDCs) were significantly

associated with the incidence of LNM. Using multivariate analysis, the receiver operating characteristic curves were calculated and the area under curve (AUC) was used to compare the ability of the different parameters to identify the risk of LNM. The most powerful clinicopathological parameter for predicting LNM was lymphatic invasion (difference AUC = 0.204), followed by the presence or absence of tumor budding (difference AUC = 0.190), presence of PDCs (difference AUC = 0.172) and tumor budding graded by the Ueno method (difference AUC = 0.128).

CONCLUSION

Our results indicate that the tumor budding and the depth multiplied by the width measurements of submucosal invasion can provide important information for patients with SICRC.

Key words: Colorectal cancer; Neoplasm invasion; Lymph node; Metastasis

© The Author(s) 2017. Published by Baishideng Publishing Group Inc. All rights reserved.

Core tip: The appropriacy of endoscopic resection for patients with submucosal invasive colorectal carcinoma (SICRC) is still questionable. Therefore, highly precise predictors of lymph node metastasis (LNM) are needed to optimize the outcome of treatments for SICRC. We determined the value of a novel grading system based on histopathological parameters to predict LNM in patients with SICRC. Our results indicate that the presence or absence of tumor budding and the depth multiplied by the width measurements of the submucosal invasion can provide important information regarding the treatment options for patients with SICRC.

Yim K, Won DD, Lee IK, Oh ST, Jung ES, Lee SH. Novel predictors for lymph node metastasis in submucosal invasive colorectal carcinoma. *World J Gastroenterol* 2017; 23(32): 5936-5944 Available from: URL: <http://www.wjgnet.com/1007-9327/full/v23/i32/5936.htm> DOI: <http://dx.doi.org/10.3748/wjg.v23.i32.5936>

INTRODUCTION

Endoscopic resection of intramucosal carcinomas is considered to be a curative therapy since the risk of lymph node metastasis (LNM) is low^[1]. However, up to 12% of patients with submucosal invasive colorectal carcinoma (SICRC) have LNM^[2,3], and it is unclear whether endoscopic resection is the most appropriate treatment option for these patients. Prior to endoscopic resection, patients with SICRC require careful pathological assessment to determine whether there is a significant risk of LNM which may require additional surgical treatment^[4].

Various histopathological parameters such as angiolymphatic invasion, poor tumor differentiation, and the depth and/or width of submucosal invasion are reported to be associated with LNM in patients with SICRC^[3-6]. The 2014 guidelines of the Japanese Society for Cancer of the Colon and Rectum (JSCCR) for the treatment of colorectal cancer (CRC) by endoscopic resection, suggest that cases with tumor-positive vertical resection margin, submucosal invasion of $\geq 1000 \mu\text{m}$, and unfavorable histology such as poorly differentiated adenocarcinoma, signet-ring cell carcinoma, or mucinous carcinoma should be considered for additional surgery with LN dissection^[7]. The presence of vascular invasion and/or grade 2/3 budding at the site of the deepest invasion are also included as surgical candidates.

However, not all surgical cases of SICRC present LNM, resulting in overtreatment. Conversely, some patients without surgery eventually present LNM^[2,6,8,9]. In order to provide the appropriate treatment to patients with SICRC, and reduce the number of unnecessary additional surgical resections, there needs to be an improvement in discriminating between patients with a high risk of developing LNM and those with a low risk of developing LNM.

In this study, we analyzed the incidence of LNM in relation to several histopathological findings in a large cohort of patients with SICRC, with an aim to help pathologists and clinicians in identifying the best treatment strategy for such patients.

MATERIALS AND METHODS

Patients and clinicopathological data

A total of 252 patients with SICRC who had undergone surgery for systematic lymph node dissection in Seoul Saint Mary's hospital between 2000 and 2015 were enrolled in this study. Clinicopathological parameters including age, sex, tumor location, size, and LNM status were reviewed retrospectively from the medical records. Approval for this study was acquired from the Institutional Review Board of the College of Medicine at the Catholic University of Korea (KC16RISI0817).

Histopathological analysis

Hematoxylin and eosin stained tumor sections were evaluated for the following: depth and width of the submucosal invasion, tumor budding, poorly differentiated clusters (PDCs), histological grade, lymphatic invasion, venous invasion, perineural invasion, peritumoral inflammation, and desmoplasia. Two pathologists (Lee SH and Yim KI) independently examined each tumor section.

Depth of submucosal invasion

The depth of submucosal invasion was measured by three methods. The first method followed the JSCCR guidelines^[10]. In brief, when the muscularis mucosa (MM) was clearly visible, the depth of the submucosal

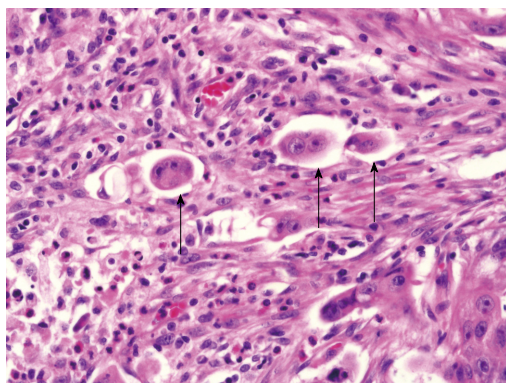


Figure 1 Representative histopathological micrograph of tumor budding (magnification $\times 400$). Hematoxylin and eosin staining of a tumor section showing tumor budding (black arrows) at the invasive front.

invasion was measured from the lowest border of the MM to the deepest invasion front. When the MM was deformed or not easily identified, the depth of the submucosal invasion was measured from the surface of the tumor to the invasion front, for both pedunculated and sessile forms. For pedunculated lesions with tangled MM, the depth of the submucosal invasion was measured as the distance between the boundary line of the head and stalk (level 2 by Haggitt classification) and the deepest point of the tumor. The second method followed the protocol by Kitajima *et al.*^[5] The tumor was classified as a pedunculated or sessile type with an identifiable MM or a sessile type without an identifiable MM. For pedunculated lesions, the depth of the submucosal invasion was measured as the distance between Haggitt's level 2 and the deepest invasion point. For sessile tumor types with an identifiable MM, the depth of invasion was measured from the lowest border of the MM to the deepest invasion front. For sessile tumor types without an identifiable MM, the depth of the submucosal invasion was measured from the surface of the tumor to the invasion front. Lastly, we followed the method by Ueno *et al.*^[6] The depth of the submucosal invasion was simply measured as the distance between the tumor surface and the deepest invasion point.

Width of submucosal invasion

The width of the submucosal invasion was defined as the largest (longest) horizontal measurement of the submucosal invasive area.

Depth multiplied by width

Assuming the shape of the submucosal invasion was an ellipse, the area is $\pi \times \text{depth} \times \text{width}$. Therefore, we postulated that the depth multiplied by width could represent the area of submucosal invasion. The results of depth multiplied by width were obtained by the three different methods described previously for measuring the depth of invasion.

Lymphatic and vascular invasion

The diagnosis of lymphatic invasion was made based on the presence of at least one tumor cell cluster within vascular space lined by a single layer of endothelial cells with no supporting smooth muscle, elastic lamina and/or red blood cells, whose lumens are sometimes filled with lymphocytes. Similarly, we defined vascular invasion as tumor cell nests in spaces that were lined by endothelium and filled with red blood cells, located in the vicinity of an artery and distant from the main lesion. Tumor cell nests in spaces that were not lined by endothelial cells were considered as stroma-invasive tumor cell nests, that is, retraction artifacts due to tissue shrinkage during fixation. In this study, only tumor cell nests in spaces lined by endothelial cells were counted as lymphovascular invasion.

Additional immunohistochemical staining with Podoplanin (clone D2-40, 1:50, Cell Marque, Hot Springs, AR, the United States of America), to detect lymphatic invasion, and with CD34 (clone QBEnd 10, 1:100, DAKO, Glostrup, Denmark) or CD31 (clone JC70A, 1:200, Dako, Glostrup, Denmark), to detect venous invasion were performed in those sections in which it was difficult to judge the presence or absence of lymphovascular invasion.

Tumor budding

An isolated tumor cell or small clusters of < 5 cancer cells in the invasive front was defined as tumor budding (Figure 1). In the present study, this was assessed by two different methods. The method described by Ueno *et al.*^[6] identified a microscopic field with intense budding and counted the number of budding foci using the $\times 20$ objective lens and classified the number of foci by grade (grade 0; 0 focus, grade 1; 1-4 foci, grade 2; 5-9 foci, grade 3; ≥ 10 foci per field). The second method assessed the presence or absence of the tumor budding.

PDCs

PDCs were defined as cancer cell clusters of ≥ 5 carcinoma cells that are lacking a glandular formation at the invasive front (Figure 2). However, when evaluating the mucinous adenocarcinoma, cancer cell clusters within a large mucin pool were not classified as PDCs; whereas, cancer cell clusters infiltrating the stroma with minimal extracellular mucin formation were classified as PDCs^[11]. In our study, the assessment of PDCs was based on the presence or absence of PDCs.

Statistical analysis

χ^2 test, Fisher's exact test, or Wilcoxon rank sum test were used to analyze the differences between the absence and presence of LNM. When predicting LNM, the sensitivity, specificity, accuracy, positive predictive value (PPV), and negative predictive value (NPV) were evaluated for each factor. Using multivariate logistic

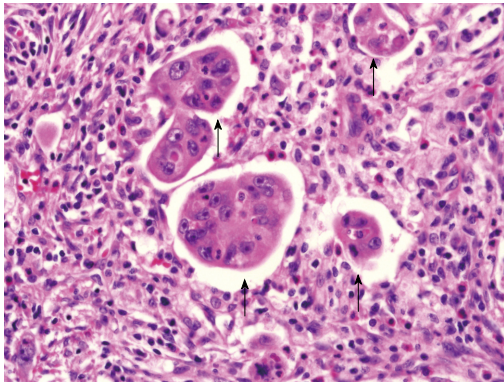


Figure 2 Representative histopathological micrograph of poorly differentiated clusters (magnification $\times 400$). Hematoxylin and eosin stain of tumor section showing cancer cell clusters of ≥ 5 carcinoma cells lacking a glandular formation (poorly differentiated clusters, black arrows).

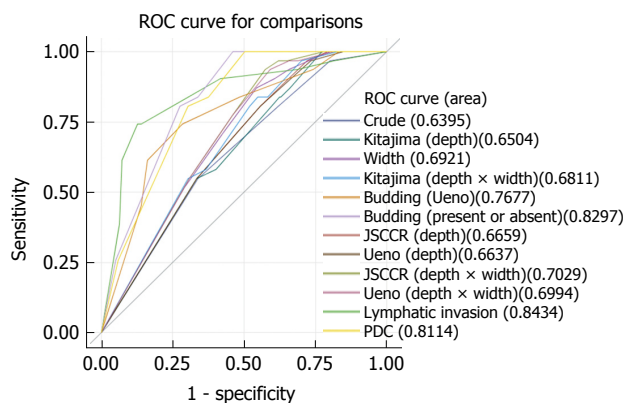


Figure 3 Comparison of receiver operating characteristic curves by multivariate logistic regression tests. Desmoplasia and tumor type were used as compounding factors.

regression analysis, ROC was calculated and the AUC was used to compare how effective the parameters were at identifying the risk of LNM; tumor type and desmoplasia were used as compounding factors. Two-sided P values of < 0.05 were considered statistically significant. JMP software (version 9.0.2; SAS Institute, Cary, NV, the United States of America) was used for all statistical calculations.

RESULTS

Patients and clinicopathological data

Of the 252 patients, 130 were male and 122 were female; the mean age was 61.8 years. One hundred and fifty eight patients had tumors in the colon, including 1 in the vermiform appendix, and 94 in the rectum. The mean tumor size was 20.6 mm (range 2.0 mm–65.0 mm). LNM were observed in 31 cases (12.3%). Tumor budding was identified in 133 cases (52.8%) and 86 cases (34.1%) were grade 2 or 3 using the Ueno method [grade 0; 119 cases (47.2%), grade 1; 47 cases (18.7%), grade 2; 46 cases (18.2%), grade 3; 40 cases (15.9%)]. The baseline

clinicopathological characteristics are summarized in Table 1.

LNM in relation to histopathological parameters

Table 1 summarizes the correlations between the histopathological parameters and LNM. The depth and width of the submucosal invasion, depth multiplied by width measurement, and the presence of lymphatic invasion, tumor budding, and PDCs were all significantly associated with the incidence of LNM. The depth multiplied by width values were significantly higher in tumors with LNM than in tumors without LNM, irrespective of the method used ($P < 0.001$). The incidence of LNM was 23.3% in tumors with tumor budding and 0% in cases without tumor budding ($P < 0.0001$).

Comparison of risk factors for LNM

The sensitivity, specificity, accuracy, PPVs, and NPVs were calculated for the parameters that were significantly associated with LNM using univariate analysis (Table 2). In addition, ROC curves were obtained for each parameter and the AUC was used to compare how well the various risk factors could identify the risk of LNM (Table 3 and Figure 3).

We found that the JSCCR method for measuring the depth of invasion was the most predictive for LNM (difference AUC = 0.026). In addition, the width of the submucosal invasion was more accurate for predicting LNM than the depth of invasion (difference AUC = 0.053). Furthermore, when using the JSCCR method for the depth of invasion, we found that the depth multiplied by width was even more powerful than the depth of invasion or width of invasion alone (difference AUC = 0.063). Meanwhile, the most powerful clinicopathological parameter for predicting LNM was lymphatic invasion (difference AUC = 0.204), followed by the presence or absence of tumor budding (difference AUC = 0.190), PDCs (difference AUC = 0.172) and tumor budding assessed using the Ueno method (difference AUC = 0.128). Simply classifying tumor budding by the presence or absence was more predictive than the method proposed by Ueno.

DISCUSSION

The presence of LNM is known to be one of the most significant and independent predictor for 5 years cancer specific survival and 5 years disease-free survival in patients with SICRC^[12]. It is essential to select the most appropriate treatment options considering the risk of LNM. However, each treatment modality needs to balance a potential cure with the mortality and morbidity risks that accompany such treatment options. Therefore, it is crucial to identify those patients with a potential risk for LNM before proceeding with additional surgical treatments.

To date, various histopathological parameters,

Table 1 Univariate analysis of clinicopathological and histological parameters for lymph node metastasis

	LNM		P value
	No (n = 221)	Yes (n = 31)	
Age (yr)	61.81 ± 11.40 63.0 (31.0, 86.0)	61.35 ± 10.63 66.0 (38.0, 78.0)	0.8334
Sex			
Male	115 (88.46)	15 (11.54)	0.7205
Female	106 (86.89)	16 (13.11)	
Tumor location			
Ascending colon	34 (89.48)	4 (10.52)	0.6018
Transverse colon	12 (85.71)	2 (14.29)	
Descending colon	6 (100.00)	0 (0.00)	
Sigmoid colon	73 (91.25)	7 (8.75)	
Rectosigmoid colon	14 (93.33)	1 (6.67)	
Rectum	78 (82.98)	16 (17.02)	
Cecum	3 (75.00)	1 (25.00)	
Vermiform appendix	1 (100.00)	0 (0.00)	
Tumor size (cm)	2.05 ± 1.67 1.8 (0.2, 6.5)	2.07 ± 1.27 2.0 (0.4, 6.5)	0.6902
Tumor type			
Pedunculated type	84 (93.33)	6 (6.67)	0.0424
Sessile type	137 (84.57)	25 (15.43)	
Depth of submucosal invasion by JSCCR (μm)	2473.94 ± 2003.78 2200.0 (0.0, 13500.0)	3777.42 ± 2167.10 3500.0 (1050.0, 12000.0)	0.0002
< 1000	46 (100.00)	0 (0.00)	0.0021
≥ 1000	175 (84.95)	31 (15.05)	
by Kitajima (μm)	1944.3 ± 1885.18 1900.0 (0.0, 13500.0)	3380.65 ± 2390.28 3000.0 (500.0, 12000.0)	0.0002
< 1000	76 (95.00)	4 (5.00)	0.0218
≥ 1000	145 (94.30)	27 (15.70)	
by Ueno (μm)	2671 ± 1898.39 2300.0 (50.0, 13500.0)	3908.06 ± 2147.17 3500.0 (1050.0, 12000.0)	0.0002
< 1000	34 (100.00)	0 (0.00)	0.0113
≥ 1000	187 (85.78)	31 (14.22)	
Width of submucosal invasion (μm)	5831.45 ± 4724.02 5000.0 (50.0, 31000.0)	9261.29 ± 4692.03 8000.0 (1900.0, 21000.0)	< 0.0001
< 4000 μm	87 (96.67)	3 (3.33)	0.0010
≥ 4000 μm	134 (82.72)	28 (17.28)	
Depth multiplied by width by JSCCR (mm ²)	20.22 ± 35.07 11.6 (0.0, 303.8)	38.91 ± 36.50 26.6 (2.0, 163.8)	< 0.0001
< 6.5	84 (98.82)	1 (1.18)	< 0.0001
≥ 6.5	137 (82.04)	30 (17.96)	
by Kitajima (mm ²)	16.79 ± 34.52 8.8 (0.0, 303.8)	36.42 ± 37.97 23.1 (2.0, 163.8)	< 0.0001
< 6.5	100 (95.24)	5 (4.76)	0.0017
≥ 6.5	121 (82.31)	26 (17.69)	
by Ueno (mm ²)	20.91 ± 34.82 12.8 (0.0, 303.8)	40.12 ± 36.52 26.6 (2.0, 163.8)	< 0.0001
< 6.5	76 (98.70)	1 (1.30)	0.0001
≥ 6.5	145 (82.86)	30 (17.14)	
Tumor differentiation			
Well and moderately	211 (87.92)	29 (12.08)	0.6470
Poorly	10 (83.33)	2 (16.67)	
Lymphatic invasion			
No	190 (95.96)	8 (4.04)	< 0.0001
Yes	31 (57.41)	23 (42.59)	
Venous invasion			
No	215 (87.76)	30 (12.24)	1.0000
Yes	6 (85.71)	1 (14.29)	
Perineural invasion			
No	219 (87.60)	31 (12.40)	1.0000
Yes	2 (100)	0 (0.00)	
Inflammation			
No	100 (87.72)	14 (12.28)	1.0000
Yes	121 (87.68)	17 (12.32)	
Desmoplasia			
No	106 (92.17)	9 (7.83)	0.0550

Yes	115 (83.94)	22 (16.06)	
Tumor budding			
Ueno			
Grade 0, 1	158 (95.18)	8 (4.82)	< 0.0001
Grade 2, 3	63 (73.26)	23 (26.74)	
Present or absent			
No	119 (100)	0 (0.00)	< 0.0001
Yes	102 (76.69)	31 (23.31)	
PDCs			
No	110 (100.00)	0 (0.00)	< 0.0001
Yes	111 (78.17)	31 (21.83)	

Data are presented as *n* (%) and as mean \pm SD, median (range). *P* value of significant difference between present/absent of LMN, by χ^2 , Fisher's exact, Wilcoxon rank sum test. LNM: Lymph node metastasis; JSCCR: Japanese Society for Cancer of the Colon and Rectum; PDCs: Poorly differentiated clusters.

Table 2 Predictive powers of histopathological factors for lymph node metastasis

	Sensitivity	Specificity	Accuracy	Positive <i>P</i> value	Negative <i>P</i> value
Depth of submucosal invasion					
by JSCCR	100.00%	20.81%	30.56%	15.05%	100.00%
by Kitajima	87.10%	34.39%	40.87%	15.70%	95.00%
by Ueno	100.00%	15.38%	25.79%	14.22%	100.00%
Width of submucosal invasion	90.32%	39.37%	45.63%	17.28%	96.67%
Depth multiplied by width					
by JSCCR	96.77%	38.01%	45.24%	17.96%	98.82%
by Kitajima	83.87%	45.25%	50.00%	17.69%	95.24%
by Ueno	96.77%	34.39%	42.06%	17.14%	98.70%
Lymphatic invasion	74.19%	85.97%	84.52%	42.59%	95.96%
Tumor budding					
by Ueno	74.19%	71.49%	71.83%	26.74%	95.18%
Present or absent	100.00%	53.84%	59.52%	23.31%	100.00%
PDCs	100.00%	49.77%	55.95%	21.83%	100.00%

JSCCR: Japanese Society for Cancer of the Colon and Rectum; PDCs: Poorly differentiated clusters.

Table 3 Comparison of histopathological factors for predicting of lymph node metastasis by multivariate analysis

Model	AUC	SE	95%CI	Difference AUC	95%CI	<i>P</i> value
Crude (unadjusted)	0.640	0.046	(0.549, 0.730)			
JSCCR (depth)	0.666	0.041	(0.585, 0.747)	0.026	(0.009, 0.043)	0.0022
Kitajima (depth)	0.650	0.044	(0.565, 0.736)	0.011	(-0.022, 0.043)	0.5103
Ueno (depth)	0.664	0.042	(0.582, 0.746)	0.024	(0.009, 0.040)	0.0024
Width	0.692	0.040	(0.613, 0.771)	0.053	(-0.007, 0.112)	0.0829
JSCCR (depth \times width)	0.703	0.038	(0.629, 0.776)	0.063	(0.024, 0.103)	0.0017
Kitajima (depth \times width)	0.681	0.042	(0.599, 0.763)	0.042	(-0.002, 0.085)	0.0612
Ueno (depth \times width)	0.699	0.038	(0.624, 0.775)	0.060	(0.020, 0.099)	0.0030
Budding (ueno)	0.768	0.044	(0.682, 0.853)	0.128	(0.043, 0.214)	0.0033
Lymphatic invasion	0.843	0.041	(0.763, 0.924)	0.204	(0.114, 0.294)	< 0.0001
Budding present itself	0.830	0.0277	(0.776, 0.884)	0.190	(0.106, 0.274)	< 0.0001
PDCs	0.811	0.0296	(0.753, 0.870)	0.172	(0.087, 0.256)	< 0.0001

Crude: Tumor type, desmoplasia each model was adjusted to the tumor type and desmoplasia. AUC: Area under curve; JSCCR: Japanese Society for Cancer of the Colon and Rectum; PDCs: Poorly differentiated clusters.

including those related to the degree of submucosal invasion (measured as the depth or width of the submucosal invasion) and the status of the MM, have been proposed to predict the risk of LNM in patients with SICRC. The depth of submucosal invasion has long been identified as a predictor of LNM in SICRC, but the level of submucosal invasion associated with LNM and how the depth of invasion should be measured remain undefined. Several measurement

systems have been proposed to evaluate the depth of the submucosal invasion in SICRC, although there are still controversies regarding their ability to accurately predict LNM. Haggitt *et al*^[8] revealed that level 4 invasion is an adverse prognostic factor associated with LNM in cases of the pedunculated type of SICRC^[8]. Similarly, Kikuchi *et al*^[12] showed that the submucosal invasion level in sessile type tumors is an important risk factor for the development of LNM and local

recurrence. However, the Haggitt system is of little use in sessile type tumors without an identifiable stalk, which are always classified as level 4. The Kikuchi system is difficult to apply to specimens obtained by endoscopic resection as they do not usually include the muscularis propria and therefore submucosal invasion levels cannot easily be evaluated. For both the Haggitt and Kikuchi systems to be successfully applied, the tumors should be resected en bloc.

Owing to the variability in the shapes of SICRCs, the usefulness of quantitatively measuring the actual submucosal depth from the MM as an invasion value is being widely accepted^[5,7]. In the JSCCR guidelines, a depth of submucosal invasion of 1000 μm or more has been adopted as the criteria for additional intestinal resection^[7]. Similarly, in the present study, we found that a submucosal invasion depth of 1000 μm or more was significantly correlated with the incidence of LNM.

In the evaluation of SICRC, there have been difficulties in identifying the depth of the submucosal invasion, because the MM is sometimes poorly defined and disrupted, leading to variability in the measurements. Moreover, the greater the length of the submucosal invasive fronts, the higher the chances of contact with and subsequent invasion into the lymphovascular structures. Thus, Ueno *et al.*^[6] addressed the importance of the width of submucosal invasion in predicting LNM. They suggested that a submucosal invasion width of $\geq 4000 \mu\text{m}$ together with an invasion depth of $\geq 2000 \mu\text{m}$ could increase the probability of LNM^[6]. The chances of the lymphovascular invasion would be higher with a greater area of submucosal invasion. Toh *et al.*^[13] introduced the area of tumor involvement within the submucosa as a predictor for LNM, suggesting that the assessment of the submucosal invasion area would provide more valuable information.

Our study revealed that lymph node-positive SICRCs had a significantly greater width of invasion ($P = 0.001$) and multiplication of depth and width of invasion ($P < 0.001$) compared with those of lymph node-negative SICRCs. Additionally, the ROC analysis demonstrated that the width of invasion and multiplication of depth and width of invasion had increased sensitivity and specificity compared with the submucosal invasion depth in predicting LNM. Toh *et al.*^[13] measured the area of submucosal tumor involvement very accurately using digital pathology, which is impractical and laborious for routine clinical use. On the other hand, in the present study, we assessed the depth and width of the submucosa invasion, and then simply multiplied these two parameters. This can easily be applied in routine practice. Moreover, we have found that the multiplication of depth and width of submucosal invasion, roughly reflects the area of submucosal invasion. It showed to be a good predictor for LNM.

Tumor budding means individual malignant cells and/or small clusters of undifferentiated malignant cells

seen in the tumor stroma, which are located near the invasive front of the tumor^[14]. It has been associated with the process of epithelial-mesenchymal transition (EMT), which gives tumor cells a more mesenchymal phenotype with increased migratory capacity and invasiveness^[15]. Tumor budding is postulated to be akin to EMT, and is now considered a predictor of LNM, lymphovascular invasion, tumor relapse and poor prognosis among CRC patients of all stages^[14]. In the same context, it is proposed as an adverse prognostic factor in early CRC by the European Society for Medical Oncology consensus guidelines^[16]. Nevertheless, tumor budding has not yet been used in routine clinical practice, because there is no consensus criteria concerning the exact definition, and methodology of assessment. Therefore, standardization of methods for defining and quantifying tumor budding is needed to unequivocally confirm its prognostic value.

The present study defined tumor budding by its presence or absence and demonstrated that tumor budding was the second highest impact factor for predicting LNM in patients with SICRC, after lymphatic invasion. Moreover, in the evaluation of tumor budding, we revealed that our classification is superior to that of Ueno *et al.*^[6] suggesting that presence of tumor budding itself can significantly affect patient outcomes. In addition, our defining system is more practical since it does not require any additional grading procedures^[17].

Recent studies have emphasized the potential role of PDC as a prognostic marker for LNM in SICRC, and the present study confirmed the significant impact of PDC in identifying the risk of LNM^[11,18]. Furthermore, both ROC curves of tumor budding and PDC showed a relatively large AUC, suggesting that these two parameters had high sensitivity and specificity in predicting LNM compared with submucosal invasion depth, width and multiplication of depth and width.

Many researchers have shown that there is a directly proportional relationship between the number of examined lymph nodes and survival, particularly in patients with advanced CRC^[19-22]. Similarly, Wang *et al.*^[23] revealed that the total number of lymph nodes sampled significantly correlated with the prognosis of SICRC. Therefore, retrieving a sufficient number of nodes is crucial for investigating the relationship between clinicopathological parameters and lymph node status in CRC. However, most previous studies with early CRC have reported upon a relatively small number of lymph nodes: mean number of 9.4 ± 7.8 retrieved lymph nodes in the study by Wang *et al.*^[23] 10 in the study by Okabe *et al.*^[24] and 14 in the study by Tateishi *et al.*^[25]. A median of 18 lymph nodes were retrieved in our study, which is the largest number collected to date.

This study has several limitations. First, it is a retrospective cohort study that has a relatively low statistical power due to the small number of SICRC with LNM. In addition, SICRC case selection in this study might have been biased toward those with high

risk for LNM. Therefore, a prospective trial with large scaled cohort is necessary to verify the findings of this study. Despite these limitations, our study revealed relatively simple and novel predictors for LNM in SICRC.

In conclusion, we have revealed that the presence of tumor budding might be a powerful predictor for LNM in patients with SICRC. In addition, we have found that submucosal invasion depth and width were significantly correlated with the incidence of LNM. In particular, the multiplication of depth and width measurements of the submucosal invasion proposed in our study may provide important information regarding treatment options for patients with SICRC.

COMMENTS

Background

Endoscopic resection of intramucosal carcinomas is considered to be a curative therapy since the risk of lymph node metastasis (LNM) is low. However, up to 12% of patients with submucosal invasive colorectal carcinoma (SICRC) have LNM. Thus, it is unclear whether endoscopic resection is appropriate after carcinomatous cells have penetrated the muscularis mucosa. Prior to endoscopic resection, patients with SICRC require careful pathological assessment to determine whether there is a significant risk of LNM which may require additional surgical treatment.

Research frontiers

The depth of submucosal invasion has long been identified as a predictor of LNM in SICRC, but the level of submucosal invasion associated with LNM and how the depth of invasion should be measured remain undefined. Several measurement systems have been proposed to evaluate the depth of the submucosal invasion in SICRC, although there are still controversies regarding their ability to accurately predict LNM. There needs to be an improvement in discriminating between patients with a high risk of developing LNM and those with a low risk of developing LNM.

Innovations and breakthroughs

It has revealed that the width of the submucosal invasion was more accurate for predicting LNM than the depth of invasion and the depth multiplied by width was even more powerful than the depth of invasion or width of invasion alone in the present study. In addition, it has revealed that the presence of tumor budding might be a powerful predictor for LNM in patients with SICRC.

Applications

In the present study, it assessed the depth and width of the submucosa invasion, and then simply multiplied these two parameters. This can easily be applied in routine practice. In the evaluation of tumor budding, it revealed that presence of tumor budding itself can significantly affect patient outcomes. This defining system is more practical since it does not require any additional grading procedures.

Peer-review

This is a well-written manuscript showing predictive factors for LNM of SICRC.

REFERENCES

- 1 Nivatvongs S. Surgical management of early colorectal cancer. *World J Surg* 2000; **24**: 1052-1055 [PMID: 11036281 DOI: 10.1007/s002680010148]
- 2 Kikuchi R, Takano M, Takagi K, Fujimoto N, Nozaki R, Fujiyoshi T, Uchida Y. Management of early invasive colorectal cancer. Risk of recurrence and clinical guidelines. *Dis Colon Rectum* 1995; **38**: 1286-1295 [PMID: 7497841 DOI: 10.1007/bf02049154]
- 3 Sohn DK, Chang HJ, Park JW, Choi DH, Han KS, Hong CW, Jung KH, Kim DY, Lim SB, Choi HS, Jeong SY. Histopathological risk factors for lymph node metastasis in submucosal invasive colorectal carcinoma of pedunculated or semipedunculated type. *J Clin Pathol* 2007; **60**: 912-915 [PMID: 16997919 DOI: 10.1136/jcp.2006.043539]
- 4 Egashira Y, Yoshida T, Hirata I, Hamamoto N, Akutagawa H, Takeshita A, Noda N, Kurisu Y, Shibayama Y. Analysis of pathological risk factors for lymph node metastasis of submucosal invasive colon cancer. *Mod Pathol* 2004; **17**: 503-511 [PMID: 15001992 DOI: 10.1038/modpathol.3800030]
- 5 Kitajima K, Fujimori T, Fujii S, Takeda J, Ohkura Y, Kawamata H, Kumamoto T, Ishiguro S, Kato Y, Shimoda T, Iwashita A, Ajioka Y, Watanabe H, Watanabe T, Muto T, Nagasako K. Correlations between lymph node metastasis and depth of submucosal invasion in submucosal invasive colorectal carcinoma: a Japanese collaborative study. *J Gastroenterol* 2004; **39**: 534-543 [PMID: 15235870 DOI: 10.1007/s00535-004-1339-4]
- 6 Ueno H, Mochizuki H, Hashiguchi Y, Shimazaki H, Aida S, Hase K, Matsukuma S, Kanai T, Kurihara H, Ozawa K, Yoshimura K, Bekku S. Risk factors for an adverse outcome in early invasive colorectal carcinoma. *Gastroenterology* 2004; **127**: 385-394 [PMID: 15300569 DOI: 10.1053/j.gastro.2004.04.022]
- 7 Watanabe T, Itabashi M, Shimada Y, Tanaka S, Ito Y, Ajioka Y, Hamaguchi T, Hyodo I, Igarashi M, Ishida H, Ishihara S, Ishiguro M, Kanemitsu Y, Kokudo N, Muro K, Ochiai A, Oguchi M, Ohkura Y, Saito Y, Sakai Y, Ueno H, Yoshino T, Boku N, Fujimori T, Koinuma N, Morita T, Nishimura G, Sakata Y, Takahashi K, Tsuruta O, Yamaguchi T, Yoshida M, Yamaguchi N, Kotake K, Sugihara K; Japanese Society for Cancer of the Colon and Rectum. Japanese Society for Cancer of the Colon and Rectum (JSCCR) Guidelines 2014 for treatment of colorectal cancer. *Int J Clin Oncol* 2015; **20**: 207-239 [PMID: 25782566 DOI: 10.1007/s10147-015-0801-z]
- 8 Haggitt RC, Glotzbach RE, Soffer EE, Wruble LD. Prognostic factors in colorectal carcinomas arising in adenomas: implications for lesions removed by endoscopic polypectomy. *Gastroenterology* 1985; **89**: 328-336 [PMID: 4007423 DOI: 10.1016/0016-5085(85)90333-6]
- 9 Nakadoi K, Tanaka S, Kanao H, Terasaki M, Takata S, Oka S, Yoshida S, Arihiro K, Chayama K. Management of T1 colorectal carcinoma with special reference to criteria for curative endoscopic resection. *J Gastroenterol Hepatol* 2012; **27**: 1057-1062 [PMID: 22142484 DOI: 10.1111/j.1440-1746.2011.07041.x]
- 10 Watanabe T, Itabashi M, Shimada Y, Tanaka S, Ito Y, Ajioka Y, Hamaguchi T, Hyodo I, Igarashi M, Ishida H, Ishiguro M, Kanemitsu Y, Kokudo N, Muro K, Ochiai A, Oguchi M, Ohkura Y, Saito Y, Sakai Y, Ueno H, Yoshino T, Fujimori T, Koinuma N, Morita T, Nishimura G, Sakata Y, Takahashi K, Takiuchi H, Tsuruta O, Yamaguchi T, Yoshida M, Yamaguchi N, Kotake K, Sugihara K; Japanese Society for Cancer of the Colon and Rectum. Japanese Society for Cancer of the Colon and Rectum (JSCCR) guidelines 2010 for the treatment of colorectal cancer. *Int J Clin Oncol* 2012; **17**: 1-29 [PMID: 22002491 DOI: 10.1007/s10147-011-0315-2]
- 11 Ueno H, Hase K, Hashiguchi Y, Shimazaki H, Yoshii S, Kudo SE, Tanaka M, Akagi Y, Suto T, Nagata S, Matsuda K, Komori K, Yoshimatsu K, Tomita Y, Yokoyama S, Shinto E, Nakamura T, Sugihara K. Novel risk factors for lymph node metastasis in early invasive colorectal cancer: a multi-institution pathology review. *J Gastroenterol* 2014; **49**: 1314-1323 [PMID: 24065123 DOI: 10.1007/s00535-013-0881-3]
- 12 Chok KS, Law WL. Prognostic factors affecting survival and recurrence of patients with pT1 and pT2 colorectal cancer. *World J Surg* 2007; **31**: 1485-1490 [PMID: 17510767 DOI: 10.1007/s00268-007-9089-0]
- 13 Toh EW, Brown P, Morris E, Botterill I, Quirke P. Area of submucosal invasion and width of invasion predicts lymph node metastasis in pT1 colorectal cancers. *Dis Colon Rectum* 2015; **58**: 393-400 [PMID: 25751795 DOI: 10.1097/DCR.0000000000000315]
- 14 Lugli A, Karamitopoulou E, Zlobec I. Tumour budding: a

- promising parameter in colorectal cancer. *Br J Cancer* 2012; **106**: 1713-1717 [PMID: 22531633 DOI: 10.1038/bjc.2012.127]
- 15 **Kalluri R**. EMT: when epithelial cells decide to become mesenchymal-like cells. *J Clin Invest* 2009; **119**: 1417-1419 [PMID: 19487817 DOI: 10.1172/JCI39675]
 - 16 **Schmoll HJ**, Van Cutsem E, Stein A, Valentini V, Glimelius B, Haustermans K, Nordlinger B, van de Velde CJ, Balmana J, Regula J, Nagtegaal ID, Beets-Tan RG, Arnold D, Ciardiello F, Hoff P, Kerr D, Köhne CH, Labianca R, Price T, Scheithauer W, Sobrero A, Tabernero J, Aderka D, Barroso S, Bodoky G, Douillard JY, El Ghazaly H, Gallardo J, Garin A, Glynn-Jones R, Jordan K, Meshcheryakov A, Papamichail D, Pfeiffer P, Souglakos I, Turhal S, Cervantes A. ESMO Consensus Guidelines for management of patients with colon and rectal cancer. a personalized approach to clinical decision making. *Ann Oncol* 2012; **23**: 2479-2516 [PMID: 23012255 DOI: 10.1093/annonc/mds236]
 - 17 **Kawachi H**, Eishi Y, Ueno H, Nemoto T, Fujimori T, Iwashita A, Ajioka Y, Ochiai A, Ishiguro S, Shimoda T, Mochizuki H, Kato Y, Watanabe H, Koike M, Sugihara K. A three-tier classification system based on the depth of submucosal invasion and budding/sprouting can improve the treatment strategy for T1 colorectal cancer: a retrospective multicenter study. *Mod Pathol* 2015; **28**: 872-879 [PMID: 25720321 DOI: 10.1038/modpathol.2015.36]
 - 18 **Ueno H**, Kajiwarra Y, Shimazaki H, Shinto E, Hashiguchi Y, Nakanishi K, Maekawa K, Katsurada Y, Nakamura T, Mochizuki H, Yamamoto J, Hase K. New criteria for histologic grading of colorectal cancer. *Am J Surg Pathol* 2012; **36**: 193-201 [PMID: 22251938 DOI: 10.1097/PAS.0b013e318235edee]
 - 19 **Deodhar KK**, Budukh A, Ramadwar M, Bal MM, Shrikhande SV. Are we achieving the benchmark of retrieving 12 lymph nodes in colorectal carcinoma specimens? Experience from a tertiary referral center in India and review of literature. *Indian J Pathol Microbiol* 2012; **55**: 38-42 [PMID: 22499298 DOI: 10.4103/0377-4929.94853]
 - 20 **Lagoudianakis E**, Pappas A, Koronakis N, Tsekouras D, Dalianoudis J, Kontogianni P, Papanikolaou D, Chrysikos J, Karavitis G, Markogiannakis H, Filis K, Manouras A. Lymph node harvesting in colorectal carcinoma specimens. *Tumori* 2011; **97**: 74-78 [PMID: 21528668]
 - 21 **Dekker JW**, Peeters KC, Putter H, Vahrmeijer AL, van de Velde CJ. Metastatic lymph node ratio in stage III rectal cancer; prognostic significance in addition to the 7th edition of the TNM classification. *Eur J Surg Oncol* 2010; **36**: 1180-1186 [PMID: 20884164 DOI: 10.1016/j.ejso.2010.09.007]
 - 22 **Stocchi L**, Fazio VW, Lavery I, Hammel J. Individual surgeon, pathologist, and other factors affecting lymph node harvest in stage II colon carcinoma. is a minimum of 12 examined lymph nodes sufficient? *Ann Surg Oncol* 2011; **18**: 405-412 [PMID: 20839064 DOI: 10.1245/s10434-010-1308-5]
 - 23 **Wang HS**, Liang WY, Lin TC, Chen WS, Jiang JK, Yang SH, Chang SC, Lin JK. Curative resection of T1 colorectal carcinoma: risk of lymph node metastasis and long-term prognosis. *Dis Colon Rectum* 2005; **48**: 1182-1192 [PMID: 15793641 DOI: 10.1007/s10350-004-0935-y]
 - 24 **Okabe S**, Shia J, Nash G, Wong WD, Guillem JG, Weiser MR, Temple L, Sugihara K, Paty PB. Lymph node metastasis in T1 adenocarcinoma of the colon and rectum. *J Gastrointest Surg* 2004; **8**: 1032-1039; discussion 1039-1040 [PMID: 15585391 DOI: 10.1016/j.gassur.2004.09.038]
 - 25 **Tateishi Y**, Nakanishi Y, Taniguchi H, Shimoda T, Umemura S. Pathological prognostic factors predicting lymph node metastasis in submucosal invasive (T1) colorectal carcinoma. *Mod Pathol* 2010; **23**: 1068-1072 [PMID: 20473277 DOI: 10.1038/modpathol.2010.88]

P- Reviewer: Naito Y, Neninger E, Yamagata M **S- Editor:** Qi Y
L- Editor: A **E- Editor:** Zhang FF





Published by **Baishideng Publishing Group Inc**
7901 Stoneridge Drive, Suite 501, Pleasanton, CA 94588, USA
Telephone: +1-925-223-8242
Fax: +1-925-223-8243
E-mail: bpgoffice@wjgnet.com
Help Desk: <http://www.f6publishing.com/helpdesk>
<http://www.wjgnet.com>



ISSN 1007-9327

