

• BRIEF REPORTS •

Alcohol dehydrogenase: A potential new marker for diagnosis of intestinal ischemia using rat as a model

Upendra R Gumaste, Mukund M Joshi, Devendra T Mourya, Pradip V Barde, Ghanshyam K Shrivastav, Vikram S Ghole

Upendra R Gumaste, Ghanshyam K Shrivastav, Vikram S Ghole, Division of Biochemistry, Department of Chemistry, University of Pune, Pune 411007, India

Devendra T Mourya, Pradip V Barde, Microbial Containment Complex, National Institute of Virology, Sus-Road, Pashan, Pune, Pune 411008, India

Mukund M Joshi, Department of Surgery, B J Medical College, Pune 411001 and Joshi Clinic and Health Sciences Foundation, Pune 411005, India

Supported by Department of Science and Technology, Ministry of Science and Technology, Government of India, India

Correspondence to: Vikram Ghole, Division of Biochemistry, Department of Chemistry, University of Pune, Pune 411007, India. vsghole@chem.unipune.ernet.in

Telephone: +91-20-25601225 Fax: +91-20-25691728

Received: 2004-09-29 Accepted: 2004-10-18

in portal and heart blood within 1 h of SMA occlusion without increase in SGPT in heart blood, suggests that the origin of ADH is from ischemic intestine and not from liver. Similarly, raised ADH levels were found in DA and IVC as well. IVC blood does represent peripheral blood sample. A raised level of ADH in test animals confirms it to be a potential marker in the early diagnosis of Ii.

© 2005 The WJG Press and Elsevier Inc. All rights reserved.

Key words: Intestinal ischemia; ADH; Biochemical parameter

Gumaste UR, Joshi MM, Mourya DT, Barde PV, Shrivastav GK, Ghole VS. Alcohol dehydrogenase: A potential new marker for diagnosis of intestinal ischemia using rat as a model. *World J Gastroenterol* 2005; 11(6): 912-916

<http://www.wjgnet.com/1007-9327/11/912.asp>

Abstract

AIM: Intestinal ischemia (Ii) is an abdominal emergency due to blockade of the superior mesenteric artery resulting in 60-100% mortality if diagnosed late. Changes in several biochemical parameters such as D (-)-lactate, Creatinine kinase isoenzymes and lactate dehydrogenase suggested for early diagnosis, lack specificity and sensitivity. Therefore a biochemical parameter with greater sensitivity needs to be identified.

METHODS: Wistar male rats were randomly assigned into two groups; control sham operated ($n = 24$) and ischemic test ($n = 24$) group. Superior mesenteric arterial occlusion was performed in the ischemic test group for 1 h. Alcohol dehydrogenase (ADH) was estimated in blood from portal vein, right ventricle of heart, dorsal aorta (DA) and inferior vena cava (IVC). The Serum glutamic acid pyruvate transaminase (SGPT) was also estimated in blood from portal vein and right ventricle of heart.

RESULTS: A significant increase ($P < 0.001$) in the levels of ADH in both portal blood as well as heart blood of the test group (232.72 ± 99.45 EU and 250.85 ± 95.14 EU, respectively) as compared to the control group (46.39 ± 21.69 EU and 65.38 ± 30.55 EU, respectively) were observed. Similarly, increased levels of ADH were observed in blood samples withdrawn from DA and IVC in test animals (319.52 ± 80.14 EU and 363.90 ± 120.68 EU, respectively) as compared to the control group (67.68 ± 63.22 EU and 72.50 ± 58.45 EU, respectively). However, in test animals there was significant increase in SGPT in portal blood ($P = 0.054$) without much increase in heart blood.

CONCLUSION: Significant increase in the levels of ADH

INTRODUCTION

Acute mesenteric ischemia is an abdominal emergency due to inadequate tissue perfusion. Consequence of late diagnosis is a multi-system organ dysfunction syndrome, which may lead to death^[1]. The mortality rate due to intestinal ischemia (Ii) ranges between 60-100%. Yet there is no non-invasive method to diagnose Ii in the early stage. There are several attempts to analyze a biochemical marker for the diagnosis of Ii; however, no suitable marker has been identified till date.

The measurement of plasma D (-)-lactate, amylin level, serum concentration of cytosolic beta-glucosidase (CBG) and diamine oxidase (DAO) may be useful to assess the intestinal injury^[2-6]. Preliminary findings suggest that human intestinal fatty acid binding protein (hIFABP) may serve as a diagnostic marker for early intestinal mucosal damage^[7,8]. The results suggest that plasma and peritoneal lactic acid (LA) are sensitive indicators in the early diagnosis of bowel ischemia in contrast to serum CK, which is not a useful indicator^[9,10]. Glutathione-S-transferase (α -GST) monitoring is also a useful tool for the diagnosis of Ii^[11].

Association of Alcohol dehydrogenase (ADH) (EC 1.1.1.1) levels with various pathological conditions has already been suggested^[12-14]. It has been reported that endotoxemia occurs in Ii^[15]. Gastrointestinal barrier dysfunction in Ii has also been reported^[16-18]. Recently, involvement of endotoxin in up-regulation of ADH gene from liver reported by Mezey *et al*^[19] (2003) along with the above-mentioned findings, prompted us to look for ADH levels in Ii. ADH is a major enzyme catalyzing the biological oxidation of ethanol in mammals^[20]. Five protein subunits (α , β , γ , π and χ) combine into three classes of isoenzymes. The class IV (σ) ADH

encoded by ADH7 is a key enzyme in the metabolism of retinol to retinoic acid (RA)^[21,22]. Rat ADH3 and human class I (ADH) are analogous and mainly localized in liver. Rat ADH2 and human χ -ADH (class III) are analogous and ubiquitously found in all tissues. The correspondence between rat ADH-1 and human π -ADH (class II) is not clear. Human π -ADH has been detected exclusively in liver while rat ADH 1 is found in eye, stomach, lung and other rat organs but not in liver^[23]. The wide tissue distribution of ADH is already established^[23,24]. In an attempt of qualitative determination of ADH in animals suffering from Ii, we found significant increase in ADH enzyme activity. Thus further studies were therefore conducted to investigate the association of increase in ADH enzyme activity with SMA occlusion.

MATERIALS AND METHODS

Eight weeks old rats (Wistar strain) weighing between 150-200 g were fasted 18 h before conducting the experiments. Two groups were assigned, sham-operated control ($n = 24$) and one-hour ischemic test group ($n = 24$). Midline laprotomy was performed on both the groups after giving ether anesthesia. The control group of animals was sham-operated in order to trace the superior mesenteric artery (SMA) while in test group the SMA was flush ligated. Both the groups were kept under observation for 1 h.

After 1 h the blood was withdrawn from portal vein, right ventricle of heart, dorsal aorta (DA) and inferior vena cava (IVC). The serum was separated immediately and stored at -40°C till the assay was performed. The serum glutamic acid pyruvate transaminase (SGPT) was assayed in serum sample drawn from portal vein and heart while alcohol dehydrogenase (ADH) was assayed in samples drawn at all points mentioned above within 24 h of blood withdrawal. Alcohol dehydrogenase assay was performed by the method of Skursky *et al.*^[25]. The substrate p-nitroso N, N dimethyl aniline (NDMA) was prepared in the laboratory^[26]. Both kinetic as well as one-point incubation method were performed. Concentration of ADH is

expressed in terms of μM of NDMA reduced per min per mL of serum.

The enzyme kinetic assays were carried out in 96 well flat bottom micro titer plates and 7.5 μL of serum was added to each well. To this 132.5 μL of substrate solution was added and the plates were read immediately at 440 nm in kinetic mode for 10 min on the kinetic reader Softmax Pro, Version 4 (Molecular devices, USA). SGPT assay was carried out using 'Infinite GPT' kit (Accurex Biomedical Pvt. Ltd, India).

Intestinal tissue of about 10 cm in length and a small part of liver were removed immediately after the end of the experiment and fixed in 10% formal saline. The sections were stained with hematoxylin/eosine for histopathological investigation. The grades of the injury to the intestine were defined as mentioned by Khurana *et al.*^[27] briefly: grade 0-normal. Grade 1- subepithelial blebs with small areas of apical epithelial loss; stroma and crypts normal; vessels are patent. Grade 2- total loss of villous epithelium but crypts and stroma are normal; vessels are patent. Grade 3- total villous loss with some crypts involved; stroma normal; vessels are patent. Grade 4- all crypts involved, stroma is normal, but vessels patent and remain patent. Grade 5- all Grade 4 changes with stromal necrosis and/or evidence of vessel thrombosis.

Student *t* test was used for statistical analyses of data using 'Quick-stat' software.

RESULTS

The levels of SGPT and ADH are depicted in (Figure 1). The values of SGPT in portal blood in test and control animals were 39.93 ± 7.99 IU/L and 15.70 ± 4.83 IU/L, respectively. SGPT levels in samples drawn from heart were 35.27 ± 18.11 IU/L and 13.04 ± 6.87 IU/L, respectively in test and control animals. The increase in SGPT levels in heart blood of test animals was not significant as compared to that in portal blood of test animals ($P = 0.054$).

There was nearly 5 times increase in the levels of ADH in blood from portal vein, DA and IVC; however, heart blood showed a rise of about 4 times in test group as compared

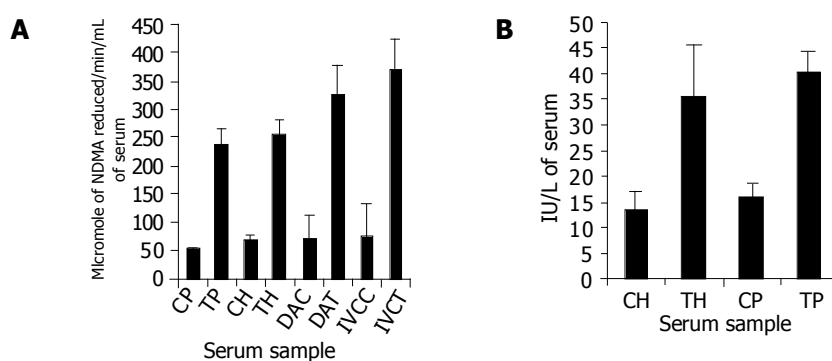


Figure 1 Alcohol Dehydrogenase Assay By Skursky *et al* (A) and SGPT Assay (B) performed in heart blood and portal blood of 1 h ischemic test and sham operated control group. A: Alcohol dehydrogenase assay performed by Skursky *et al* method. CH and TH represent the blood withdrawn from heart of control group and test group, respectively. CP and TP represent the blood withdrawn from portal vein of control group and test group, respectively. DAC and DAT represent the dorsal aorta blood sample from control and test group, respectively while IVCC and IVCT represent the blood sample from inferior vena cava of control and test group, respectively. The EU expressed in terms of micromoles of NDMA reduced per min/L of serum; B: SGPT assay. CH and TH represent the blood withdrawn from heart of control group and 1 h ischemic test group, respectively. CP and TP represent the blood withdrawn from portal vein of control group and 1 h ischemic test group, respectively.

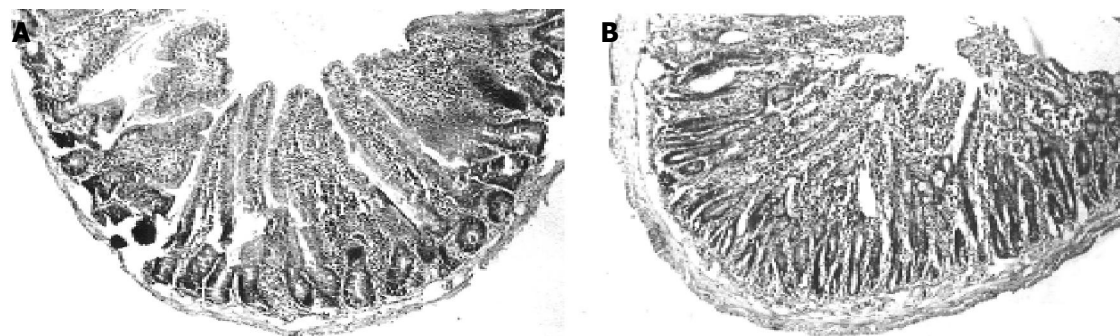


Figure 3 Histology of intestine from rats. A: C- control sham operated group; 0 grade injury i.e. no damage to villi and crypts; B: t-test one-hour intestinal ischemic group; Total villous loss with some crypts involved; stroma normal. Vessels are patent (i.e. grade 3 injury).

to control group. The levels of ADH in portal blood of test group and control group were 232.72 ± 99.44 EU and 46.38 ± 21.69 EU, respectively whereas those in heart blood of test and control were 250.85 ± 95.14 EU and 65.37 ± 30.55 EU, respectively. Similarly there was an increase in DA and IVC blood in test group (319.52 ± 80.14 EU and 363.90 ± 120.68 EU, respectively) as compared to control group (67.68 ± 63.22 EU and 72.50 ± 58.50 EU, respectively). The increase in ADH levels at all the points in test animals were highly significant as compared to control group ($P < 0.001$). The kinetic data of blood sample taken from heart of the test animal and control animal also support this fact (Figure 2). Kinetic data also reconfirmed the finding that the levels of ADH at all the points mentioned above were significantly higher in test group as compared to control group.

It was interesting to note that histological studies in liver tissue from control and test animal do not show any apparent damage. Grade three injuries were observed in intestines of the test animals those who had suffered 1-h SMA occlusion (Figure 3).

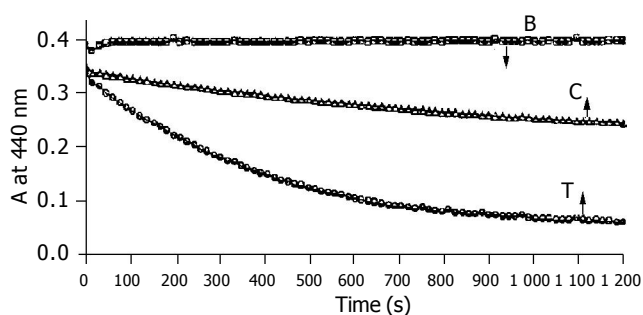


Figure 2 Kinetic assay of Alcohol dehydrogenase from serum carried out at 30°C . (B) Showing practically no auto-reduction of NDMA in the absence of serum, (C) reduction of NDMA in the presence of serum drawn from the heart of control animal after 1 h of sham operation, (T) reduction of NDMA in presence of serum drawn from the heart of test animal after 1 h SMA occlusion.

DISCUSSION

Our data reveals highly significant increase in the levels of ADH at all points as mentioned above, as compared to control group. There is evidence to suggest that the barrier

properties of the gastrointestinal mucosa are significantly in conditions like ischemia^[16,17]. Measurement of plasma (or luminal) clearances of water-soluble molecules has proved to be a popular method for studying intestinal permeability¹⁸. Rise in ADH enzyme levels suggest that probably ADH leaks out from gastrointestinal lumen into the blood compartment due to an intestinal barrier dysfunction caused by Ii. Caglayan *et al*^[28] (2002) studied ischemia-reperfusion in intestine in rabbits and estimated CK, LDH, AST and SGPT. They concluded that in ischemic condition there was a rise in AST, LDH and CK levels but there is no rise in the level of SGPT. With these findings they concluded that in ischemia of intestine, liver per se is not contributing into the increased levels of other enzymes and their primary source is injured intestine. It is a well-known fact that alcoholism causes liver damage, but Chrostek *et al*^[29] has shown that in alcoholics the main source of serum ADH is gastrointestinal tract and not liver. Our study also reports significant increase in SGPT levels in portal blood without insignificant increase in heart blood in test animals. This is another supporting evidence that in our study, the intestine and not the liver is responsible for the rise of serum ADH levels in Ii. Data obtained from the histological findings also suggest that there was no damage of liver cells in the test animals.

Variation in SGPT levels in control heart blood and test heart blood was not found to be statistically significant. However, portal vein samples of the same animals showed significant increase of SGPT levels ($P = 0.05$). This can be explained as the portal blood represents diffuse drainage from the intestine allowing higher concentration of SGPT due to ischemic intestine while such blood that enters subsequently into liver and in body-circulation gets diluted and final concentration would vary according to blood volume of each animal.

It seems that residual level of ADH in normal animal is around 46 EU and the rise due to ischemic insult shoots up to 232 EU in heart blood. Comparatively the levels of ADH in heart, DA and IVC show higher levels than blood withdrawn from portal vein, which is contradictory to the argument, made in relation to SGPT. The DA blood represents the blood, which supplies blood to organs and tissues of lower part of the body while IVC blood represents peripheral blood circulation and collection of blood from

all organs and tissues from distal part of the body. When closely compared, the levels of ADH obtained in test animals are 232.72 ± 99.44 EU in portal blood, 250.85 ± 95.14 EU in heart blood, 319.52 ± 80.14 in DA blood and 363.90 ± 120.68 in IVC blood, imply that point of collection of sample does not affect the level of detection of ADH. On the contrary the higher levels of ADH at different points highlight their utility towards diagnosis of Ii as only tissue damaged in this process was the intestine. However, this fact can be explained by hypothesizing that there may be some unknown compounds or factors, which might be getting released by intestinal tissue into the blood, which may interact with other tissues allowing additional ADH release in the blood. The endotoxemia occurs following severe injuries in the intestine in Ii^[15]. It is also known that bacterial endotoxin up-regulates the ADH gene in liver^[19]. However, we believe, the duration of 1-h ischemia is insufficient to up-regulate the ADH gene in liver and cause increased ADH enzyme in blood. The increase in ADH levels is equally significant in portal blood as well as all other points (Figure 1) in SMA-ligated test animals, which suggests that it cannot be due to up-regulation of ADH gene in the liver by endotoxin. The investigation of such factor will be an interesting approach but presently beyond the scope of this paper.

ADH is also termed as s-nitroso glutathione (GSNO) terminase involved in the elimination of aldehyde resulting from lipid peroxidation, thereby constituting a defense mechanism against cytotoxic aldehydes generated by lipid peroxidation^[30]. Since there is generation of localized free radicals, nitric oxide, lipid peroxides and possible production of GSNO in ischemic intestine^[31], it is surmised that the increased levels of ADH may be involved in neutralization of lipid peroxidation product and degradation of GSNO.

ADH1 and ADH4 are expressed throughout the gastrointestinal tract and exhibit retinol dehydrogenase activity, which is responsible for the generation of retinoic acid (RA). RA is an essential modulator of epithelial development, differentiation and aging of vascular smooth muscle cells^[30]. Due to the occurrence of apoptosis and large amount of cell destruction of enterocytes in ischemia, the role of ADH in generation of enterocytes and preparedness of tissue for recovery cannot be neglected.

The significant increase in the levels of ADH in portal and heart blood along with similar increase in DA blood and IVC blood within 1 h of SMA occlusion without increase in SGPT in heart blood suggests that the origin of ADH is from ischemic intestine. This also rules out the possibility of direct pathophysiological involvement of liver. In fact, the histopathological examination of liver tissue from test samples reconfirms the above findings. Since IVC blood sample, which represents peripheral blood, has shown that increased levels of ADH in test animals confirms the potential of serum ADH in early diagnosis of Ii. Even in clinical settings femoral blood sample can be taken very effectively. Therefore, we feel its clinical utility is much more prominent; however, clinical trials are required in order to confirm this finding and utility in day to day clinical practices.

ACKNOWLEDGEMENTS

Authors acknowledge and thank the Department of Science

and Technology, Ministry of Science and Technology, Government of India, for the financial supports to this work. We express our sincere thanks to Dr. Latey for his kind suggestion and help. We also thank Dr. Milind Mirashi (Cytochem laboratories, Pune) for his help in histological studies.

REFERENCES

- 1 Newman TS, Magnuson TH, Ahrendt SA, Smith-Meek MA, Bender JS. The changing face of mesenteric infarction. *Am Surg* 1998; **64**: 611-616
- 2 Sommer T, Larsen JF. Detection of intestinal ischemia using a microdialysis technique in an animal model. *World J Surg* 2003; **27**: 416-420
- 3 Tenhunen JJ, Jakob SM, Takala JA. Gut luminal lactate release during gradual intestinal ischemia. *Intensive Care Med* 2001; **27**: 1916-1922
- 4 Dimmitt RA, Glew R, Colby C, Brindle M, Skarsgard E, Moss RL. Serum cytosolic beta-glucosidase activity in a rat model of necrotizing enterocolitis. *Pediatr Res* 2003; **54**: 462-465
- 5 Phillips AR, Abu-Zidan FM, Farrant GJ, Zwi JL, Cooper GJ, Windsor JA. Plasma amylin concentration is related to the severity of intestinal ischemic injury in rats. *Surgery* 2001; **129**: 730-735
- 6 Bragg LE, Thompson JS, West WW. Intestinal diamine oxidase levels reflect ischemic injury. *J Surg Res* 1991; **50**: 228-233
- 7 Lieberman JM, Sacchettini J, Marks C, Marks WH. Human intestinal fatty acid binding protein: report of an assay with studies in normal volunteers and intestinal ischemia. *Surgery* 1997; **121**: 335-342
- 8 Kanda T, Fujii H, Tani T, Murakami H, Suda T, Sakai Y, Ono T, Hatakeyama K. Intestinal fatty acid-binding protein is a useful diagnostic marker for mesenteric infarction in humans. *Gastroenterology* 1996; **110**: 339-343
- 9 Liao XP, She YX, Shi CR, Li M. Changes in body fluid markers in intestinal ischemia. *J Pediatr Surg* 1995; **30**: 1412-1415
- 10 Prichard M, Ducharme NG, Wilkins PA, Erb HN, Butt M. Xanthine oxidase formation during experimental ischemia of the equine small intestine. *Can J Vet Res* 1991; **55**: 310-314
- 11 Gearhart SL, Delaney CP, Senagore AJ, Banbury MK, Remzi FH, Kiran RP, Fazio VW. Prospective assessment of the predictive value of alpha-glutathione S-transferase for intestinal ischemia. *Am Surg* 2003; **69**: 324-329; discussion 329
- 12 Chrostek L, Szmitkowski M. Isoenzymes of class I and II alcohol dehydrogenase in chronic hepatitis. *Clin Chem Lab Med* 1999; **37**: 145-147
- 13 Chrostek L, Szmitkowski M. Activity of class I and II isoenzymes of alcohol dehydrogenase measured by a fluorometric method in the sera of patients with obstructive jaundice. *Clin Chim Acta* 1997; **263**: 117-122
- 14 Chrostek L, Szmitkowski M. Serum activities of classes I and II alcohol dehydrogenases in toxic liver damage. *Clin Chim Acta* 1998; **271**: 163-169
- 15 Sun XQ, Fu XB, Zhang R, Lu Y, Deng Q, Jiang XG, Sheng ZY. Relationship between plasma D (-)-lactate and intestinal damage after severe injuries in rats. *World J Gastroenterol* 2001; **7**: 555-558
- 16 Solligard E, Juel IS, Bakkelund K, Johnsen H, Saether OD, Gronbech JE, Aadahl P. Gut barrier dysfunction as detected by intestinal luminal microdialysis. *Intensive Care Med* 2004; **30**: 1188-1194
- 17 Samel S, Keese M, Kleczka M, Lanig S, Gretz N, Hafner M, Sturm J, Post S. Microscopy of bacterial translocation during small bowel obstruction and ischemia *in vivo*-a new animal model. *BMC Surg* 2002; **2**: 6
- 18 Crissinger KD, Kvietys PR, Granger DN. Pathophysiology of gastrointestinal mucosal permeability. *J Intern Med Suppl* 1990; **732**: 145-154
- 19 Potter JJ, Rennie-Tankersley L, Mezey E. Endotoxin enhances liver alcohol dehydrogenase by action through upstream stimu-

- latory factor but not by nuclear factor-kappa B. *J Biol Chem* 2003; **278**: 4353-4357
- 20 **Moreno A**, Pares X. Purification and characterization of a new alcohol dehydrogenase from human stomach. *J Biol Chem* 1991; **266**: 1128-1133
- 21 **Yokoyama H**, Baraona E, Lieber CS. Upstream structure of human ADH7 gene and the organ distribution of its expression. *Biochem Biophys Res Commun* 1995; **216**: 216-222
- 22 **Galter D**, Carmine A, Buervenich S, Duester G, Olson L. Distribution of class I, III and IV alcohol dehydrogenase mRNAs in the adult rat, mouse and human brain. *Eur J Biochem* 2003; **270**: 1316-1326
- 23 **Julia P**, Farres J, Pares X. Characterization of three isoenzymes of rat alcohol dehydrogenase. Tissue distribution and physical and enzymatic properties. *Eur J Biochem* 1987; **162**: 179-189
- 24 **Boleda MD**, Julia P, Moreno A, Pares X. Role of extrahepatic alcohol dehydrogenase in rat ethanol metabolism. *Arch Biochem Biophys* 1989; **274**: 74-81
- 25 **Skursky L**, Kovar J, Stachova M. A sensitive photometric assay for alcohol dehydrogenase activity in blood serum. *Anal Biochem* 1979; **99**: 65-71
- 26 **Furniss BS**, Hannaford AJ, Smith PWG, Tatchell AR. Vogel's Textbook of Practical Organic Chemistry, 5th ed. ELBS with Longman Pub, 1989, 911.
- 27 **Khurana S**, Corbally MT, Manning F, Armenise T, Kierce B, Kilty C. Glutathione S-transferase: a potential new marker of intestinal ischemia. *J Pediatr Surg* 2002; **37**: 1543-1548
- 28 **Caglayan F**, Caglayan O, Gunel E, Elcuman Y, Cakmak M. Intestinal ischemia-reperfusion and plasma enzyme levels. *Pediatr Surg Int* 2002; **18**: 255-257
- 29 **Chrostek L**, Szmitkowski M, Wierzbowski J. Activity of class I and II alcohol dehydrogenase in the sera of alcoholics. *Eur J Clin Chem Clin Biochem* 1994; **32**: 881-884
- 30 **Esterbauer H**, Zollner H, Lang J. Metabolism of the lipid peroxidation product 4-hydroxynonenal by isolated hepatocytes and by liver cytosolic fractions. *Biochem J* 1985; **228**: 363-373
- 31 **Jourd'heuil D**, Jourd'heuil FL, Feelisch M. Oxidation and nitrosation of thiols at low micromolar exposure to nitric oxide. Evidence for a free radical mechanism. *J Biol Chem* 2003; **278**: 15720-15726

Assistant Editor Guo SY Edited by Gabbe M