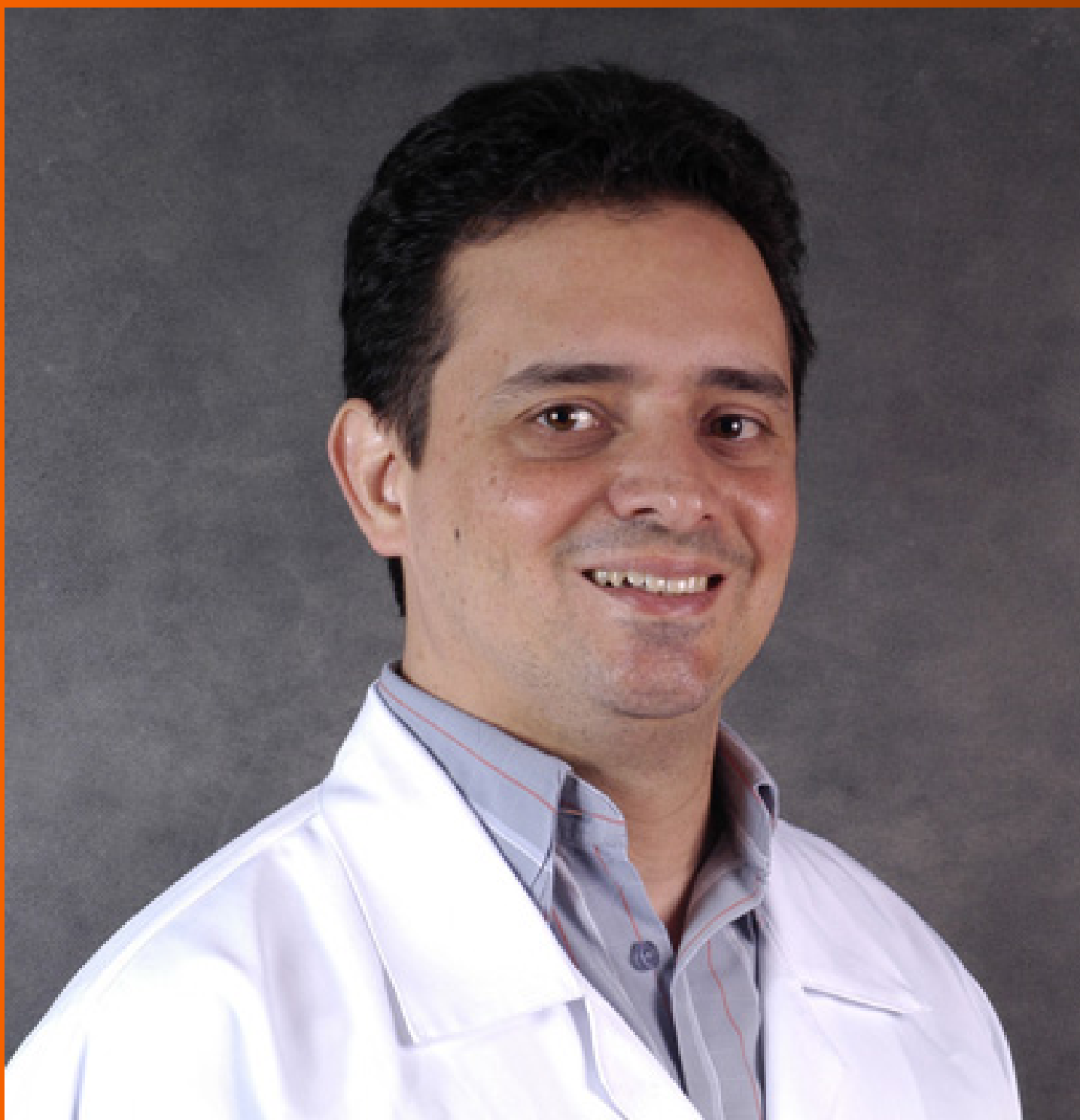


World Journal of *Diabetes*

World J Diabetes 2020 October 15; 11(10): 400-480



REVIEW

- 400 Type 1 diabetes mellitus and its oral tolerance therapy

Mao RF, Chen YY, Zhang J, Chang X, Wang YF

ORIGINAL ARTICLE**Case Control Study**

- 416 Importance of serum phosphate in elderly patients with diabetes mellitus

Raikou VD, Kyriaki D, Gavril S

Retrospective Cohort Study

- 425 Association between restrictive pulmonary disease and type 2 diabetes in Koreans: A cross-sectional study

Lee DY, Nam SM

- 435 Comparison of clinical features and outcomes in peritoneal dialysis-associated peritonitis patients with and without diabetes: A multicenter retrospective cohort study

Meng LF, Yang LM, Zhu XY, Zhang XX, Li XY, Zhao J, Liu SC, Zhuang XH, Luo P, Cui WP

Retrospective Study

- 447 Risk of anemia in morbidly obese patients after bariatric surgery in Taiwan

Wang TY, Huang HH, Hsieh MS, Chen CY

SYSTEMATIC REVIEWS

- 459 Impact of technology use in type 2 diabetes distress: A systematic review

Vieira P, Kobayasi R, Pereira F, Zaia IM, Sasaki SU

META-ANALYSIS

- 468 Prevalence and impact of diabetes in patients with COVID-19 in China

Du M, Lin YX, Yan WX, Tao LY, Liu M, Liu J

ABOUT COVER

Editorial board member of *World Journal of Diabetes*, Dr. José Carnevalheira is an Associate Professor at the Campinas State University (UNICAMP, Brazil). Having received his Bachelor's degree from Pernambuco University College of Medicine in 1994, Dr. Carnevalheira undertook his postgraduate training at UNICAMP, receiving his PhD in 2004. He became Chief Physician in the Clinical Oncology Division of the Hospital de Clínicas Affiliated to UNICAMP in 2014 and has held the position since. His ongoing research interests involve investigation of how body composition, energy homeostasis, and the underlying mechanisms of whole-body metabolism are linked to cancer survival outcomes. In particular, his studies aim to elucidate the regulatory role of insulin resistance and its attendant pathophysiological features in determination of cancer-mediated disturbances in systemic homeostasis and cancer prognosis. (L-Editor: Filipodia)

AIMS AND SCOPE

The primary aim of *World Journal of Diabetes* (WJD, *World J Diabetes*) is to provide scholars and readers from various fields of diabetes with a platform to publish high-quality basic and clinical research articles and communicate their research findings online.

WJD mainly publishes articles reporting research results and findings obtained in the field of diabetes and covering a wide range of topics including risk factors for diabetes, diabetes complications, experimental diabetes mellitus, gestational diabetes, diabetic angiopathies, diabetic cardiomyopathies, diabetic coma, diabetic ketoacidosis, diabetic nephropathies, diabetic neuropathies, etc..

INDEXING/ABSTRACTING

The WJD is now abstracted and indexed in Science Citation Index Expanded (SCIE, also known as SciSearch®), Current Contents/Clinical Medicine, Journal Citation Reports/Science Edition, PubMed, and PubMed Central. The 2020 Edition of Journal Citation Reports® cites the 2019 impact factor (IF) for WJD as 3.247; IF without journal self cites: 3.222; Ranking: 70 among 143 journals in endocrinology and metabolism; and Quartile category: Q2.

RESPONSIBLE EDITORS FOR THIS ISSUE

Production Editor: Yu-Jie Ma; Production Department Director: Yun-Xiaojuan Wu; Editorial Office Director: Jia-Ping Yan.

NAME OF JOURNAL

World Journal of Diabetes

ISSN

ISSN 1948-9358 (online)

LAUNCH DATE

June 15, 2010

FREQUENCY

Monthly

EDITORS-IN-CHIEF

Timothy Koch

EDITORIAL BOARD MEMBERS

<https://www.wjnet.com/1948-9358/editorialboard.htm>

PUBLICATION DATE

October 15, 2020

COPYRIGHT

© 2020 Baishideng Publishing Group Inc

INSTRUCTIONS TO AUTHORS

<https://www.wjnet.com/bpg/gerinfo/204>

GUIDELINES FOR ETHICS DOCUMENTS

<https://www.wjnet.com/bpg/GerInfo/287>

GUIDELINES FOR NON-NATIVE SPEAKERS OF ENGLISH

<https://www.wjnet.com/bpg/gerinfo/240>

PUBLICATION ETHICS

<https://www.wjnet.com/bpg/GerInfo/288>

PUBLICATION MISCONDUCT

<https://www.wjnet.com/bpg/gerinfo/208>

ARTICLE PROCESSING CHARGE

<https://www.wjnet.com/bpg/gerinfo/242>

STEPS FOR SUBMITTING MANUSCRIPTS

<https://www.wjnet.com/bpg/GerInfo/239>

ONLINE SUBMISSION

<https://www.f6publishing.com>



Retrospective Study

Risk of anemia in morbidly obese patients after bariatric surgery in Taiwan

Tse-Yao Wang, Hsien-Hao Huang, Ming-Shun Hsieh, Chih-Yen Chen

ORCID number: Tse-Yao Wang 0000-0002-9660-2473; Hsien-Hao Huang 0000-0002-0524-4093; Ming-Shun Hsieh 0000-0003-2734-392X; Chih-Yen Chen 0000-0003-0937-0596.

Author contributions: Hsieh MS and Chen CY contributed equally to this work and should be regarded as co-corresponding authors; Wang TY and Huang HH designed and performed the research and wrote the paper; Hsieh MS designed the research and contributed to the analysis; Chen CY designed the research and supervised the report.

Supported by the Yin Shu-Tien Foundation Taipei Veterans General Hospital-National Yang-Ming University Excellent Physician Scientists Cultivation Program, No. 107-V-B-087.

Institutional review board statement: This study was reviewed and approved by the Institutional Review Board of China Medical University (CMUH104-REC2-115).

Informed consent statement: Patients were not required to give informed consent to the study.

Conflict-of-interest statement: We have no financial relationships to

Tse-Yao Wang, Hsien-Hao Huang, Department of Emergency Medicine, Taipei Veterans General Hospital, Taipei 112, Taiwan

Hsien-Hao Huang, Ming-Shun Hsieh, College of Medicine, National Yang-Ming University of Medicine, Taipei 112, Taiwan

Ming-Shun Hsieh, Department of Emergency Medicine, Taipei Veterans General Hospital, Taoyuan Branch, Taoyuan 330, Taiwan

Ming-Shun Hsieh, Institute of Occupational Medicine and Industrial Hygiene, National Taiwan University College of Public Health, Taipei 112, Taiwan

Chih-Yen Chen, Division of Gastroenterology and Hepatology, Department of Medicine, Taipei Veterans General Hospital, Taipei 112, Taiwan

Chih-Yen Chen, Faculty of Medicine and Institute of Emergency and Critical Medicine, National Yang-Ming University School of Medicine, Taipei 112, Taiwan

Chih-Yen Chen, Chinese Taipei Society for the Study of Obesity, Taipei 110, Taiwan

Corresponding author: Chih-Yen Chen, AGAF, MD, PhD, Attending Doctor, Professor, Division of Gastroenterology and Hepatology, Department of Medicine, Taipei Veterans General Hospital, No. 201 Sec. 2, Shih-Pai Road, Taipei 112, Taiwan. chency@vghtpe.gov.tw

Abstract

BACKGROUND

Bariatric surgery is one of most effective long-term treatments for morbid obesity. However, post-bariatric surgery anemia is identified as a common adverse effect and remains a challenge nowadays.

AIM

To estimate the risk of post-bariatric surgery anemia and to stratify the association between age, gender, and types of surgery.

METHODS

This study is a population-based cohort study. We conducted this nationwide study using claims data from National Health Insurance Research Database in Taiwan. There were 4373 morbidly obese patients in this study cohort.

disclose.

Data sharing statement: No additional data are available.

Open-Access: This article is an open-access article that was selected by an in-house editor and fully peer-reviewed by external reviewers. It is distributed in accordance with the Creative Commons Attribution NonCommercial (CC BY-NC 4.0) license, which permits others to distribute, remix, adapt, build upon this work non-commercially, and license their derivative works on different terms, provided the original work is properly cited and the use is non-commercial. See: <http://creativecommons.org/licenses/by-nc/4.0/>

Manuscript source: Invited manuscript

Received: April 30, 2020

Peer-review started: April 30, 2020

First decision: May 24, 2020

Revised: June 2, 2020

Accepted: September 8, 2020

Article in press: September 8, 2020

Published online: October 15, 2020

P-Reviewer: Farhat S, Zhu SH

S-Editor: Zhang H

L-Editor: Filipodia

P-Editor: Wang LL



RESULTS

Among patients who were diagnosed with morbid obesity, 2864 received bariatric surgery. All obesity-associated comorbidities decreased in the surgical group. Increasing risk of post-bariatric surgery anemia among obese patients was found by Cox proportional hazards regression [adjusted hazard ratio (HR): 2.36]. Also, we found significantly increasing cumulative incidence rate of anemia among patients receiving bariatric surgery by log-rank test. After adjusting for age and gender, the increasing incidence of post-bariatric surgery anemia was found among women (adjusted HR: 2.48), patients in the 20–29-year-old group (adjusted HR: 3.83), and patients in the 30–64-year-old group (adjusted HR: 2.37). Moreover, malabsorptive and restrictive procedures had significantly higher adjusted HRs, 3.18 and 1.55, respectively.

CONCLUSION

Bariatric surgery give rise to anemia risk among obese patients, specifically in women, young- and middle-aged patients, and patients undergoing malabsorptive procedures in our population-based cohort study in Taiwan.

Key Words: Anemia; Bariatric surgery; Malabsorptive procedure; Obesity; Restrictive procedure; Women

©The Author(s) 2020. Published by Baishideng Publishing Group Inc. All rights reserved.

Core Tip: Based on a population-based cohort study in Taiwan, this study demonstrated that obese patients receiving bariatric surgery had significantly higher risk of anemia than patients who did not receive bariatric surgery. After adjusting for gender and age, women, young-aged (20–29 years) and middle-aged (30–64 years), had significantly higher incidence of post-bariatric surgery anemia. Both malabsorptive procedures and restrictive procedures increased the incidence of anemia. However, malabsorptive procedures had a higher hazard ratio of post-bariatric surgery anemia than restrictive procedures.

Citation: Wang TY, Huang HH, Hsieh MS, Chen CY. Risk of anemia in morbidly obese patients after bariatric surgery in Taiwan. *World J Diabetes* 2020; 11(10): 447–458

URL: <https://www.wjnet.com/1948-9358/full/v11/i10/447.htm>

DOI: <https://dx.doi.org/10.4239/wjd.v11.i10.447>

INTRODUCTION

The incidence of obesity has increased rapidly and has tripled over the past decades^[1], significantly threatening public health. Bariatric surgery has been shown to be the most effective long-term treatment for morbidly obese patients^[1–4] considering that this surgery results in significant and sustainable weight loss and improves comorbidities, long-term mortality, and patients' quality of life^[1–8]. Although bariatric surgery is considered safe and has beneficial effects, the development of anemia after bariatric surgery remains a concern. Anemia due to micronutrient deficiencies is identified as a common adverse effect, specifically among patients without regular nutrient supplementation postoperatively.

Post-bariatric surgery anemia can influence as many as two-thirds of patients undergoing bariatric surgery^[9]. During these years, several efforts were made to decrease the incidence rate of post-bariatric surgery anemia. First, considering the metabolic sequelae of bariatric surgery, lifelong micronutrient supplementation was considered mandatory^[10]. Moreover, the quality and sustainability of medical follow-up consultation became important issues^[4]. Some studies revealed that the incidence of anemia is lower in sleeve gastrectomy than that in Roux-en-Y gastric bypass^[11–13]. Furthermore, a cohort study in France suggested that the increasing popularity of sleeve gastrectomy is another reason why the incidence of anemia has reduced^[4,11]. However, recently, the prevalence of post-bariatric surgery anemia is still considered nonnegligible. In France, 5% of patients were diagnosed with anemia after bariatric surgery between 2008 and 2016^[11]. Additionally, if a patient did not receive an outpatient follow-up, the prevalence of anemia could even be 57% 10 years after Roux-

en-Y gastric bypass^[14].

Postoperative anemia may develop as a result of several factors. First, absorption of folate and iron mainly happens in the proximal jejunum and duodenum. Malabsorptive procedures, like intestinal bypass, may cause deficiencies of folate, iron, and vitamin B12 and lead to anemia^[11,15]. Restrictive procedures, like sleeve gastrectomy, may also reduce the intrinsic factor, gastric acid, and food gastric passing time and subsequently reduce the bioavailability and digestion of nutrients^[16]. Furthermore, the net effects observed as a result of the adaptation of bariatric surgery may synergistically affect the hemoglobin level. These complicated factors include reduction of inflammation, adaptation of micronutrient absorption, limited meat intake, attenuated energy intake, and menstruation^[12,13,17,18].

A large cohort study from France revealed the long-term anemia incidence among patients who receiving a bariatric procedure^[11]. Studies assessing the long-term incidence of post-bariatric surgery anemia have not been conducted yet. This study used the nationwide data [Taiwanese National Health Insurance Research Database (NHIRD)] with large sample size. This study aimed to estimate and compare the long-term incidence of anemia between morbidly obese patients who underwent bariatric surgery *vs* patients who did not undergo bariatric surgery and to stratify the association between gender, age, and types of bariatric surgery in morbidly obese patients who received bariatric surgery or not.

MATERIALS AND METHODS

Data sources

This study is a population-based cohort study in which data were obtained from the NHIRD. The National Health Insurance (NHI) provided coverage for approximately 99.2% of the Taiwan population (more than 23.03 million residents). The NHI is managed by the National Health Insurance Administration (NHIA) since 1995.

The National Health Research Institute (NHRI) obtained the identification-encrypted data from NHIA and established the NHIRD. The Longitudinal Health Insurance Database 2000 (LHID2000), which was used in this study, comprised 1 million randomly sampled medical information from the registry of all beneficiaries in 2000. There was no significant difference in age- and gender-distributions between the data in the LHID2000 and the original NHIRD. The diagnosis code of International Classification of Diseases, Ninth Revision, Clinical Modification (ICD-9-CM) codes were used.

These data of NHIRD were all de-identified by obfuscating the information about patients and medical facilities to ensure privacy. Moreover, data confidentiality is maintained in accordance with the data regulations of NHIA and NHRI. Because the NHIRD comprises de-identified secondary data for research, informed consent from subjects was waived because anonymous data were used. Furthermore, the Institutional Review Board of China Medical University (CMUH104-REC2-115) approved this study.

Study population and outcomes

Patients who were diagnosed with morbid obesity (ICD-9-CM, 278.01) with age ≥ 20 years and < 100 years and received bariatric surgery (ICD-9-CM, 44.99, 44.95, 44.68, 44.39, 44.38, 44.31, 43.89, and 43.82) between study period January 1, 2000 to December 31, 2010 were recruited. Furthermore, we excluded morbidly obese patients who receiving surgery before obesity diagnosed data, patients who received surgery out of period between 2000 to 2010, patients with diagnosed date of anemia before the index date, those aged < 20 years or ≥ 100 years, and those with missing information of gender or age. Patients who were diagnosed with anemia (ICD-9-CM, 280 and 281.0) and patients who were not diagnosed were analyzed. Morbidly obese patients were identified by the ICD-9-CM codes, with at least one diagnosis in admission during the whole study period. The data from the Registry for Catastrophic Illness Patient Database, a subset of the NHIRD, confirmed the diagnostic accuracy of morbid obesity^[19,20].

Potential confounders

By referring to the ICD-9-CM codes, the potential confounding factors for morbid obesity were systematically identified among the data from NHIRD. Age, gender, comorbidities, insurance premium, occupation, medications, and level of urbanization were identified as confounding factors. Hyperlipidemia (ICD-9-CM, 272), diabetes

mellitus (ICD-9-CM, 250, 366.41, 357.2, 362.01-362.02, and 357.2), hypertension (ICD-9-CM, 401-405), coronary artery disease (ICD-9-CM, 411-414), congestive heart failure (ICD-9-CM, 428), stroke (ICD-9-CM, 430-438), asthma (ICD-9-CM, 493), chronic obstructive pulmonary disease (ICD-9-CM, 490-492, 494, and 496), peripheral arterial occlusive disease (ICD-9-CM, 440-444), and chronic kidney disease (ICD-9-CM, 285.21, 250.4, 403-404, and 581-588) were found to be the comorbidities associated with major adverse cardiovascular events. We applied multivariate logistic regression with baseline covariates to calculate propensity scores. The baseline characteristics of study (with bariatric surgery) cohort and comparison (without bariatric surgery) cohort were compared. Furthermore, both cohorts were matched by standardized mean differences, calculated as the difference in proportions or means of a variable divided by a pooled estimate of the standard deviation of the variable.

Statistical analyses

Demographic characteristics differences and comorbidities differences between the study cohort (receiving bariatric surgery) and comparison (without surgery) cohort were analyzed. We conducted the chi-squared test for noncontinuous variables and the two-sample *t*-test for continuous variables. Cox proportional hazards regression was performed to calculate the hazard ratios (HRs) with 95% confidence intervals (CIs) for each variable. Differences in the incidence of major adverse cardiovascular events between the study cohort and comparison cohort were estimated using the Kaplan-Meier curves by performing the log-rank test. Statistical Analysis System (SAS) version 9.4 statistical package (SAS Institute Inc., Cary, NC, United States) was used for statistical analyses. The level of significance was set at 0.05.

RESULTS

A total of 4922 adult patients were hospitalized for morbid obesity during the study period between 2000 to 2010. Of these, 3086 patient received bariatric surgery, and 1666 patients did not receive bariatric surgery. To reduce the influence of pre-surgery anemia, our study group was recruited and analyzed after the exclusion of those who were diagnosed anemia before the index date. Finally, 2864 patients who were diagnosed with morbid obesity and received bariatric surgery in the study cohort and 1509 patients who were diagnosed morbid obesity and did not receive bariatric surgery in the comparison cohort were recruited. (Figure 1). There were significantly more female patients in the study cohort than that in the comparison cohort (64.8% *vs* 54.2%, respectively, $P < 0.0001$) (Table 1). The mean age of the study cohort was significant younger than that of the comparison cohort (33.1 ± 9.1 *vs* 44.3 ± 15.3 , respectively, $P < 0.0001$). Compared to the comparison cohort, some demographic characteristics, like hypertension, hyperlipidemia, coronary artery disease, congestive heart failure, stroke, peripheral arterial occlusive disease, chronic kidney disease, chronic obstructive pulmonary disease, diabetes mellitus, gastrointestinal ulcer, and gastrointestinal hemorrhage were significantly lower ($P < 0.0001$) in the study cohort. The means (median) of the follow-up period were 5.68 (5.31) years for the study cohort and 4.21 (3.84) years for the comparison cohort.

In Table 2, asthma, female sex, and gastrointestinal ulcer increased the risk of anemia significantly according to the univariate analyses. Receiving bariatric surgery increased the rate of anemia significantly (HR = 1.71; 95%CI: 1.2-2.44; $P = 0.003$). Receiving bariatric surgery also caused a significantly increased rate of anemia after adjusting for the potential confounding factors of gender, age, and all comorbidities in multivariate analyses (adjusted HR = 2.36; 95%CI: 1.52-3.65; $P = 0.0001$).

The Kaplan-Meier curves of the both cohorts suggested significantly increasing cumulative incidence of anemia in the study cohort (with bariatric surgery) ($P = 0.0002$) (Figure 2).

In Table 3, the HR of post-bariatric surgery anemia and the incidence rate of anemia were stratified by age and gender. Female, age of 20-29 and 30-64 years had significantly higher adjusted HRs (3.83 and 2.87, respectively).

In Table 4, HR of post-bariatric surgery anemia and the incidence rate were stratified by malabsorptive and restrictive procedures. Malabsorptive and restrictive procedures had significantly higher adjusted HRs (3.18 and 1.55, respectively).

Table 1 Demographic characteristics of patients diagnosed morbid obesity receiving and not-receiving bariatric surgery

Variable	Receiving bariatric surgery				P value ¹
	No [<i>n</i> = 1509 (34.51%)]		Yes [<i>n</i> = 2864 (65.49%)]		
	<i>n</i>	%	<i>n</i>	%	
Malabsorptive procedures	-	-	1773	61.91	-
Restrictive procedures	-	-	2465	86.07	-
Sex					< 0.0001
Female	818	54.21	1855	64.77	
Male	691	45.79	1009	35.23	
Age at baseline, yr					< 0.0001
20-29	302	20.01	1305	45.57	
30-64	1034	68.52	1558	54.4	
65-100	173	11.46	1	0.03	
mean ± SD	44.30 ± 15.25		33.09 ± 9.07		< 0.0001 ²
Comorbidities					
Hypertension	751	49.77	254	8.87	< 0.0001
Hyperlipidemia	314	20.81	110	3.84	< 0.0001
Diabetes mellitus	525	34.79	174	6.08	< 0.0001
Coronary artery disease	261	17.3	69	2.41	< 0.0001
Congestive heart failure	243	16.1	39	1.36	< 0.0001
Stroke	123	8.15	37	1.29	< 0.0001
Chronic kidney disease	124	8.22	22	0.77	< 0.0001
Asthma	186	12.33	75	2.62	< 0.0001
Chronic obstructive pulmonary disease	145	9.61	34	1.19	< 0.0001
Peripheral arterial occlusive disease	29	1.92	3	0.1	< 0.0001 ^a
Gastrointestinal ulcer	185	12.26	73	2.55	< 0.0001
Gastrointestinal bleeding	44	2.92	12	0.42	< 0.0001

¹Chi-square test.²*t* test.^aFisher's exact test. The means (median) of follow-up period were 5.68 (5.31) years and 4.21 (3.84) years for the study bariatric surgery cohort and comparison cohorts, respectively. SD: Standard deviation.

DISCUSSION

Our study demonstrated that patients who were diagnosed with morbid obesity and received bariatric surgery had significantly higher risk of anemia than patients who did not receive bariatric surgery. After stratification by gender and age, female sex, young-aged (20-29 years) and middle-aged (30-64 years) patients had significantly higher HRs than male sex and older-aged patients. Malabsorptive procedures had a higher HR of post-bariatric surgery anemia than restrictive procedures.

Currently, bariatric surgery is considered a promising treatment strategy because of its long-term benefits for morbidly obese patients. These benefits include the following: Sustainable body weight loss; improvement in comorbidities; reduction in medicine use; and improvement in patients' quality of life^[1-8]. However, post-bariatric surgery anemia, which mainly results from micronutrient deficiencies, is recognized as the most common adverse effect^[3-5]. The metabolic sequela, such as anemia, was identified before the 1990s^[21,22]. Moreover, recently, post-bariatric surgery anemia remains a challenge. The large cohort study from France revealed that 5% were diagnosed with anemia after bariatric surgery. Furthermore, the overall risk rate of diagnosing anemia postoperatively was 7.8%^[11]. In our study, we demonstrate that

Table 2 Cox model with hazard ratio and 95% confidence intervals of anemia associated with receiving bariatric surgery among morbidly obese patients

Variable	Anemia	Crude ¹		Adjusted ²			
	No. (n = 221)	HR	(95%CI)	P value	HR	(95%CI)	P value
Receiving bariatric surgery							
No	38	1.00	reference		1.00	reference	
Yes	183	1.71	(1.2-2.44)	0.003	2.36	(1.52-3.65)	0.0001
Gender							
Female	186	1.00	reference		1.00	reference	
Male	35	0.32	(0.22-0.46)	< 0.0001	0.33	(0.23-0.48)	< 0.0001
Age							
20-29 years	88	1.00	reference		1.00	reference	
30-64 years	126	1.08	(0.82-1.41)	0.6028	1.06	(0.79-1.41)	0.6956
65-100 years	7	1.33	(0.61-2.88)	0.4724	1.33	(0.54-3.3)	0.5391
Comorbidities (ref = non-)							
Hypertension	41	1.07	(0.76-1.51)	0.6837	1.43	(0.9-2.27)	0.1349
Hyperlipidemia	18	1.06	(0.65-1.71)	0.8249	1.14	(0.64-2.01)	0.6595
Diabetes mellitus	26	0.95	(0.63-1.44)	0.812	0.96	(0.59-1.57)	0.8826
Coronary artery disease	15	1.23	(0.73-2.08)	0.441	1.17	(0.61-2.25)	0.6403
Congestive heart failure	10	1.02	(0.54-1.93)	0.9436	0.91	(0.42-1.94)	0.8027
Stroke	4	0.63	(0.23-1.7)	0.3611	0.52	(0.18-1.5)	0.2286
Chronic kidney disease	7	1.32	(0.62-2.8)	0.4752	1.47	(0.66-3.28)	0.3504
Asthma	17	1.74	(1.06-2.85)	0.0293	1.85	(1.05-3.25)	0.034
Chronic obstructive pulmonary disease	6	0.93	(0.41-2.08)	0.8514	0.56	(0.22-1.43)	0.2267
Peripheral arterial occlusive disease	1	0.99	(0.14-7.05)	0.9905	1.47	(0.2-10.88)	0.705
Gastrointestinal ulcer	20	2.17	(1.37-3.44)	0.001	2.25	(1.34-3.77)	0.0021
Gastrointestinal bleeding	5	2.64	(1.09-6.42)	0.0321	1.83	(0.7-4.78)	0.2204

¹Crude HR: Represented relative hazard ratio.²Adjusted HR: Represented adjusted hazard ratio: Mutually adjusted for sex, age, receiving bariatric surgery, and baseline comorbidities (as like tables) in Cox proportional hazard regression.

obese patients who received bariatric surgery significantly had 2.36-fold higher risk of anemia than obese patients who did not receive bariatric surgery.

Post-bariatric surgery anemia is considered mainly due to micronutrient deficiency. Deficiencies of vitamin B12, iron, and vitamin D were commonly observed postoperatively^[17,23]. Additionally, oral supplementation of these nutrients was described in the updated guidelines^[10]. Other beneficial postoperative physiological changes regarding anemia were already determined. Weight loss after bariatric surgery reduces inflammation, consequently reducing anemia. Chronic inflammation has been recognized as a characteristic feature of morbid obesity^[24,25]. Decreasing inflammatory markers such as ferritin, C-reactive protein, haptoglobin, and white blood cell count were noted after bariatric surgery^[18,26,27]. However, the positive effects of post-bariatric surgery anemia are less observed than the negative effects in the long-term.

This study also proposed that females had a greater risk of post-bariatric surgery anemia than males among obese patients. Women are nearly 3-fold more likely to have a diagnosis of anemia postoperatively compared with men. The results are similar to the result of a study conducted in France^[11]. von Drygalski *et al*^[18] revealed that Roux-en-Y bypass surgery increased the percentage of anemia from 12% to 23%. During the

Table 3 Incidence rate and hazard ratio with 95% confidence intervals of anemia associated with receiving bariatric surgery, stratified by sex and age

Variable	Receiving bariatric surgery						Receiving vs not-receiving bariatric surgery	
	No			Yes			Crude HR	Adjusted HR ²
	Event	Person years	IR ¹	Event	Person years	IR ¹		
Total	38	6359	5.98	183	16277	11.24	1.71(1.20-2.44) ^b	2.36(1.52-3.65) ^c
Gender								
Female	27	3455	7.82	159	10688	14.88	1.67(1.10-2.53) ^a	2.48(1.50-4.09) ^c
Male	11	2905	3.79	24	5588	4.29	1.24(0.60-2.55)	2.04(0.89-4.70)
Age group, yr								
20-29 yr	4	1386	2.89	84	7825	10.73	3.11(1.14-8.54) ^a	3.83(1.13-12.99) ^a
30-64 yr	27	4341	6.22	99	8446	11.72	1.81(1.18-2.79) ^b	2.37(1.45-3.88) ^c
65-100 yr	7	632	11.07	0	6	0	-	-

¹IR: Incidence rates, per 1000 person-years.²Represented adjusted hazard ratio: Mutually adjusted for sex, age, receiving bariatric surgery, and baseline comorbidities (as like tables) in Cox proportional hazard regression.^a $P < 0.05$.^b $P < 0.01$.^c $P < 0.001$. HR: Hazard ratio.**Table 4 Cox model with hazard ratio and 95% confidence intervals of anemia associated with receiving malabsorptive procedures or restrictive procedures among morbidly obese patients**

Variable	Anemia		Crude ¹		Adjusted ²		
	No. (n = 221)		HR	(95%CI)	P value	HR	(95%CI) P value
Malabsorptive procedures							
No	64		1	Reference		1	Reference
Yes	157		2.76	(2.06-3.70)	< 0.0001	3.18	(2.29-4.40) < 0.0001
Restrictive procedures							
No	62		1	Reference		1	Reference
Yes	159		1.38	(1.02-1.86)	0.0356	1.55	(1.10-2.19) 0.0129

¹Crude HR: Represented relative hazard ratio.²Adjusted HR: Represented adjusted hazard ratio: Mutually adjusted for sex, age, receiving bariatric surgery or not, baseline comorbidities (as like tables) in Cox proportional hazard regression. CI: Confidence interval; HR: Hazard ratio.

postoperative period, premenopausal women have greater prevalence of anemia than postmenopausal women and men. According to the National Health and Nutrition Examination Survey studies, women in their childbearing years generally have a greater percentage of anemia than men (12.2% *vs* 1.5%, respectively), and the gender differences were no longer observed after the age of 50 years^[28]. However, data from our study revealed that, after adjusting age and other confounding factors, the risk of post-bariatric surgery anemia is still higher in women than in men. Obesity is associated with an irregular menstruation cycle^[29,30]. After bariatric surgery, a more consistent menstrual cycle rather than amenorrhea or irregular menstruation cycle is observed. Hence, premenopausal women are highly diagnosed with anemia postoperatively. Another study suggested that women are at a higher risk of eating less than men, although with limited evidence, which may add other risk for iron deficiency anemia^[12].

We also found that young-aged (20-29 years) and middle-aged (30-64 years) patients had significantly higher HRs post-bariatric surgery anemia than older-aged

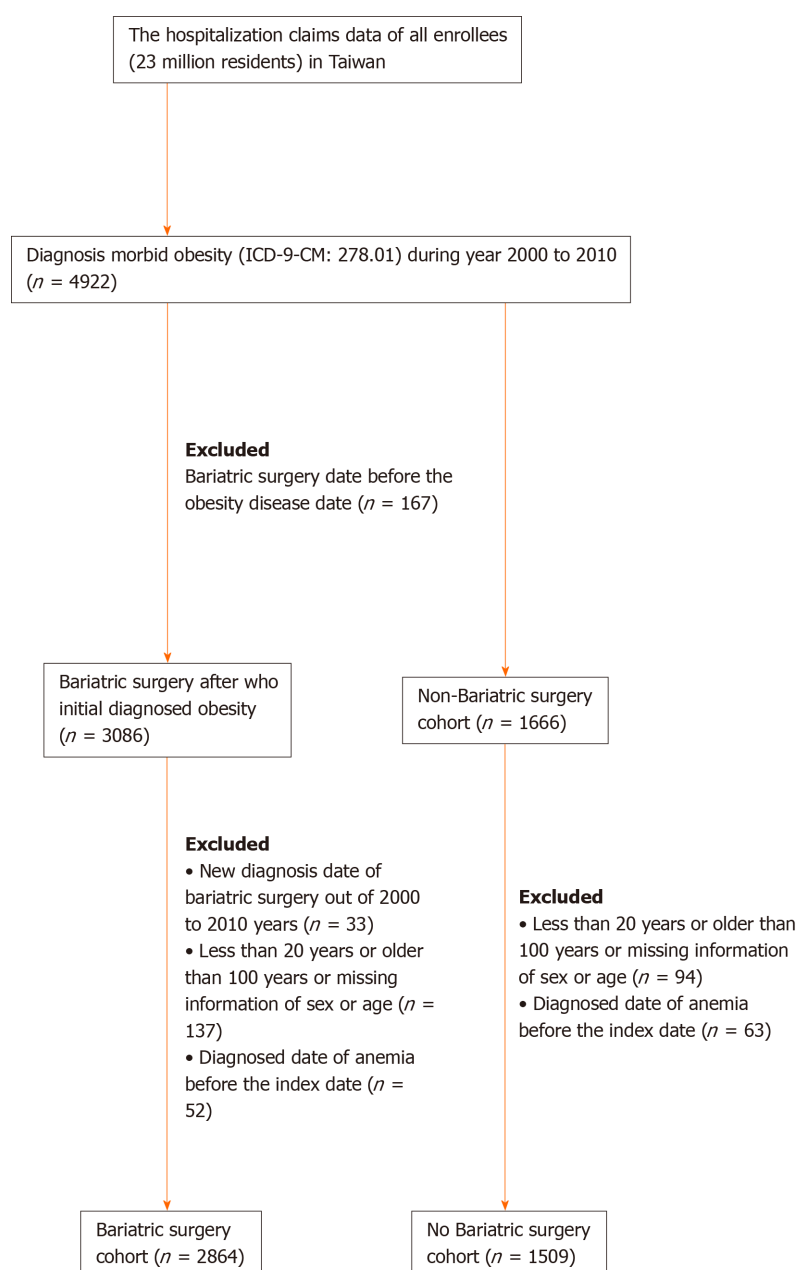


Figure 1 Flowchart of the patient selection (patients diagnosed with morbid obesity who received bariatric surgery) and comparison cohort (patients diagnosed with morbid obesity who did not receive bariatric surgery). ICD-9-CM: International Classification of Diseases, Ninth Revision, Clinical Modification.

patients. A study conducted in France revealed that patients aged less than 52 years have a 50% higher risk of developing post-bariatric surgery anemia than elderly patients^[11]. Groups were classified according to the age of 52 years because menstruation was taken into consideration^[11]. Thus, considering that premenopausal women are at an increased risk of developing anemia, a French cohort did not consider the effect of age. The following factors may potentially explain the effect of age on anemia after bariatric surgery, although with insufficient evidence: Young-aged individuals consume less calories and nutrients than required and have limited compliance to medical follow-up and limited adherence to micronutrient supplement consumption. Furthermore, the small sample size of older-aged patients, that is, only six older-aged obese patients underwent bariatric surgery, must be taken into consideration.

The risks of post-bariatric surgery anemia vary among different types of surgery. Our study revealed that obese patients who underwent malabsorptive procedures have 3.18-fold higher risk of developing anemia than patients who did not undergo malabsorptive procedures. Moreover, obese patients who underwent restrictive procedures also have 1.55-fold higher risk of developing anemia than patients who did

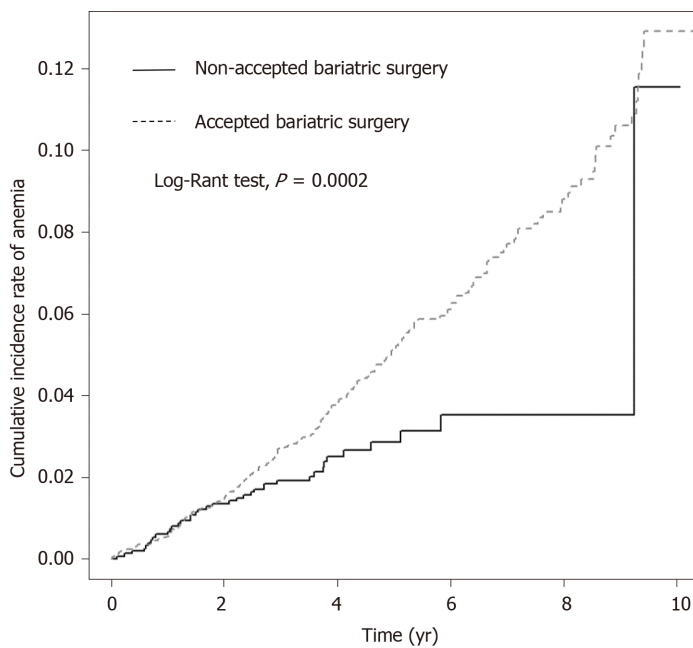


Figure 2 Cumulative incidence of anemia in morbidly obese patients who received bariatric surgery and patients who did not receive bariatric surgery.

not undergo restrictive procedures. Previous studies also demonstrated that malabsorptive procedures have greater risk of anemia than restrictive procedures. The French cohort showed that the risk rates of developing anemia due to micronutrient deficiency were 13.0% after gastric bypass, 5.6% after sleeve gastrectomy, and 4.0% after adjustable gastric banding. Both malabsorptive and restrictive procedures lessen the volume of gastric pouch and also reduce hydrochloric acid production. Gut hypoacidity reduces transit time; consequently, early satiety and decreased intake amount contribute to the risk of micronutrient deficiency anemia after bariatric surgery. In addition to stomach reduction, malabsorptive procedures (*e.g.*, Roux-en-Y bypass surgery) further bypass the main sites of iron absorption (duodenum and a portion of the jejunum). Hence, malabsorptive procedures theoretically result in more iron deficiency. However, patients who underwent malabsorptive procedures are possibly able to adapt iron absorption^[5,31]. Therefore, postoperative iron deficiency is insignificantly different between the two types of surgery. One meta-analysis also revealed that sleeve gastrectomy and Roux-en-Y bypass surgery are comparable regarding the risk of postoperative iron deficiency^[5].

On the contrary, malabsorptive procedures have significant effects on vitamin B12 absorption. Roux-en-Y bypass surgery reduces acid secretion, affects intrinsic factor function, and limits the mixing of food with pancreatic secretions. Consequently, vitamin B12 maldigestion and malabsorption lead to higher risk anemia postoperatively^[5,32]. One meta-analysis revealed that Roux-en-Y bypass surgery had 3.55-fold higher risk of postoperative vitamin B12 deficiency than sleeve gastrectomy^[5]. Recent studies demonstrate that malabsorptive procedures result in excess weight loss at midterm, but the difference was not statistically significant. The morbidity rates of the two procedures were statistically insignificant^[33,34].

Our study has the following strength: The nationwide cohort with large sample size, paying careful attention to post-bariatric surgery anemia in morbidly obese patients. However, there are some limitations in our study. First, the Taiwan NHIRD did not comprise information regarding hemoglobin level, body weight, and height. Therefore, the associations between body mass index changes, body weight changes, and post-bariatric surgery anemia could not be analyzed. To reduce the influence of pre-surgery anemia, our study group was analyzed after excluding who had anemia diagnosis before index date. Second, due to the retrospective cohort design of the study, the evidence of this study was lower in statistical quality than randomized trials. Third, regimens for micronutrient supplementation were not assessed in this study. Thus, we could not further analyze the micronutrient deficiency between groups.

CONCLUSION

In conclusion, our study demonstrated that morbidly obese patients who received bariatric surgery had a significantly higher risk of developing anemia than patients who did not receive bariatric surgery. After the stratification of confounding factors, female sex, young-aged (20-29 years) and middle-aged (30-64 years) patients, and patients who underwent malabsorptive procedures had significantly higher HRs than male sex, older-aged patients, and patients who did not undergo malabsorptive procedures.

ACKNOWLEDGMENTS

We would like to thank the Clinical Research Core Laboratory of Taipei Veterans General Hospital for providing experimental space and facilities.

ARTICLE HIGHLIGHTS

Research background

Bariatric surgery is considered to be the most effective long-term treatment for morbidly obese patients. However, post-bariatric surgery anemia is identified as a common adverse effect and remains a challenge nowadays. This study revealed the long-term incidence of anemia in morbidly obese patients who received a bariatric procedure in large cohorts.

Research motivation

Although post-bariatric surgery anemia is identified as a common adverse effect, there are insufficient population-based cohort studies to demonstrate the long-term incidence of anemia and the risk of post-bariatric surgery anemia.

Research objectives

To estimate the risk of post-bariatric surgery anemia and to stratify the association between sex, age, and type of surgery.

Research methods

This study is a population-based cohort study. We conducted this nationwide study using claims data from National Health Insurance Research Database (NHIRD) in Taiwan. There were 4373 morbidly obese patients in this study cohort.

Research results

There were 4373 patients in the cohort. Among patients who were diagnosed with morbid obesity, 2864 received bariatric surgery. All obesity- and obesity-associated comorbidities decreased in the surgical group. Increasing risk of post-bariatric surgery anemia among obese patients was found by Cox proportional hazards regression [adjusted hazard ratio(HR): 2.36]. Also, we found significantly increasing cumulative incidence rate of anemia among patients receiving bariatric surgery by log-rank test. After adjusting for age and sex, the increasing incidence of post-bariatric surgery anemia was found among women (adjusted HR: 2.48), patients in the 20-29-year-old group (adjusted HR: 3.83) and patients in 30-64-year-old group (adjusted HR: 2.37). Moreover, malabsorptive and restrictive procedures had significantly higher adjusted HRs, 3.18 and 1.55, respectively.

Research conclusions

We demonstrated the long-term incidence of post-bariatric surgery anemia and the risk of post-bariatric surgery anemia *via* a population-based cohort study in which data were obtained from the Taiwan NHIRD. Bariatric surgery increases the risk of anemia among obese patients, specifically in women, young- and middle-aged patients, and patients undergoing malabsorptive procedures. Malabsorptive procedures have a higher risk of anemia than restrictive procedures. Bariatric surgery increases the long-term risk of anemia. Considering the risk of post-bariatric surgery anemia, lifelong micronutrient supplementation was considered mandatory. Moreover, the quality and sustainability of medical follow-up consultation became an

important consideration of bariatric surgery.

Research perspectives

A population-based database, like the Taiwan NHIRD, could provide the evidence of long-term risk. The data could also provide information for further analysis of the associated risks. A prospective cohort study or randomized trial could provide better statistical quality.

REFERENCES

- 1 **Cheng J**, Gao J, Shuai X, Wang G, Tao K. The comprehensive summary of surgical versus non-surgical treatment for obesity: a systematic review and meta-analysis of randomized controlled trials. *Oncotarget* 2016; **7**: 39216-39230 [PMID: [27233078](#) DOI: [10.18632/oncotarget.9581](#)]
- 2 **Christou NV**, Sampalis JS, Liberman M, Look D, Auger S, McLean AP, MacLean LD. Surgery decreases long-term mortality, morbidity, and health care use in morbidly obese patients. *Ann Surg* 2004; **240**: 416-23; discussion 423-4 [PMID: [15319713](#) DOI: [10.1097/01.sla.0000137343.63376.19](#)]
- 3 **Schauer PR**, Bhatt DL, Kirwan JP, Wolski K, Aminian A, Brethauer SA, Navaneethan SD, Singh RP, Pothier CE, Nissen SE, Kashyap SR; STAMPEDE Investigators. Bariatric Surgery versus Intensive Medical Therapy for Diabetes - 5-Year Outcomes. *N Engl J Med* 2017; **376**: 641-651 [PMID: [28199805](#) DOI: [10.1056/NEJMoa1600869](#)]
- 4 **Thereaux J**, Lesuffleur T, Païta M, Czernichow S, Basdevant A, Msika S, Millat B, Fagot-Campagna A. Long-term follow-up after bariatric surgery in a national cohort. *Br J Surg* 2017; **104**: 1362-1371 [PMID: [28657109](#) DOI: [10.1002/bjs.10557](#)]
- 5 **Gloy VL**, Briel M, Bhatt DL, Kashyap SR, Schauer PR, Mingrone G, Bucher HC, Nordmann AJ. Bariatric surgery versus non-surgical treatment for obesity: a systematic review and meta-analysis of randomised controlled trials. *BMJ* 2013; **347**: f5934 [PMID: [24149519](#) DOI: [10.1136/bmj.f5934](#)]
- 6 **Sjöström L**, Peltonen M, Jacobson P, Sjöström CD, Karason K, Wedel H, Ahlin S, Anveden Å, Bengtsson C, Bergmark G, Bouchard C, Carlsson B, Dahlgren S, Karlsson J, Lindroos AK, Lönroth H, Narbro K, Näslund I, Olbers T, Svensson PA, Carlsson LM. Bariatric surgery and long-term cardiovascular events. *JAMA* 2012; **307**: 56-65 [PMID: [22215166](#) DOI: [10.1001/jama.2011.1914](#)]
- 7 **Huang HH**, Lee WJ, Chen SC, Chen TF, Lee SD, Chen CY. Bile Acid and Fibroblast Growth Factor 19 Regulation in Obese Diabetics, and Non-Alcoholic Fatty Liver Disease after Sleeve Gastrectomy. *J Clin Med* 2019; **8**: 815 [PMID: [31181641](#) DOI: [10.3390/jcm8060815](#)]
- 8 **Wang W**, Fann CSJ, Yang SH, Chen HH, Chen CY. Weight loss and metabolic improvements in obese patients undergoing gastric banding and gastric banded plication: A comparison. *Nutrition* 2019; **57**: 290-299 [PMID: [30219686](#) DOI: [10.1016/j.nut.2018.05.024](#)]
- 9 **Brolin RE**, LaMarca LB, Kenler HA, Cody RP. Malabsorptive gastric bypass in patients with superobesity. *J Gastrointest Surg* 2002; **6**: 195-203; discussion 204-5 [PMID: [11992805](#) DOI: [10.1016/s1091-255x\(01\)00022-1](#)]
- 10 **Parrott J**, Frank L, Rabena R, Craggs-Dino L, Isom KA, Greiman L. American Society for Metabolic and Bariatric Surgery Integrated Health Nutritional Guidelines for the Surgical Weight Loss Patient 2016 Update: Micronutrients. *Surg Obes Relat Dis* 2017; **13**: 727-741 [PMID: [28392254](#) DOI: [10.1016/j.soard.2016.12.018](#)]
- 11 **Bailly L**, Schiavo L, Sebastianelli L, Fabre R, Pradier C, Iannelli A. Anemia and Bariatric Surgery: Results of a National French Survey on Administrative Data of 306,298 Consecutive Patients Between 2008 and 2016. *Obes Surg* 2018; **28**: 2313-2320 [PMID: [29516395](#) DOI: [10.1007/s11695-018-3143-x](#)]
- 12 **Kheniser KG**, Kashyap SR, Schauer PR, Lam ETC, Kullman ES. Prevalence of Anemia in Subjects Randomized into Roux-en-Y Gastric Bypass or Sleeve Gastrectomy. *Obes Surg* 2017; **27**: 1381-1386 [PMID: [28185151](#) DOI: [10.1007/s11695-017-2573-1](#)]
- 13 **Kwon Y**, Kim HJ, Lo Menzo E, Park S, Szomstein S, Rosenthal RJ. Anemia, iron and vitamin B12 deficiencies after sleeve gastrectomy compared to Roux-en-Y gastric bypass: a meta-analysis. *Surg Obes Relat Dis* 2014; **10**: 589-597 [PMID: [24582411](#) DOI: [10.1016/j.soard.2013.12.005](#)]
- 14 **Chen GL**, Kubat E, Eisenberg D. Prevalence of Anemia 10 Years After Roux-en-Y Gastric Bypass in a Single Veterans Affairs Medical Center. *JAMA Surg* 2018; **153**: 86-87 [PMID: [28975250](#) DOI: [10.1001/jamasurg.2017.3158](#)]
- 15 **Malinowski SS**. Nutritional and metabolic complications of bariatric surgery. *Am J Med Sci* 2006; **331**: 219-225 [PMID: [16617238](#) DOI: [10.1097/00000441-200604000-00009](#)]
- 16 **Braghetto I**, Davanzo C, Korn O, Csendes A, Valladares H, Herrera E, Gonzalez P, Papapietro K. Scintigraphic evaluation of gastric emptying in obese patients submitted to sleeve gastrectomy compared to normal subjects. *Obes Surg* 2009; **19**: 1515-1521 [PMID: [19714384](#) DOI: [10.1007/s11695-009-9954-z](#)]
- 17 **Chou JJ**, Lee WJ, Almalki O, Chen JC, Tsai PL, Yang SH. Dietary Intake and Weight Changes 5 Years After Laparoscopic Sleeve Gastrectomy. *Obes Surg* 2017; **27**: 3240-3246 [PMID: [28589529](#) DOI: [10.1007/s11695-017-2765-8](#)]
- 18 **von Drygalski A**, Andris DA, Nettleman PR, Jackson S, Klein J, Wallace JR. Anemia after bariatric surgery cannot be explained by iron deficiency alone: results of a large cohort study. *Surg Obes Relat Dis* 2011; **7**: 151-156 [PMID: [20702143](#) DOI: [10.1016/j.soard.2010.04.008](#)]
- 19 **Huang HH**, Hsieh MS, Chen CY. Risk of cholecystectomy in morbidly obese patients after bariatric surgery in Taiwan. *Obes Res Clin Pract* 2019; **13**: 191-196 [PMID: [30665822](#) DOI: [10.1016/j.orep.2019.01.001](#)]
- 20 **Chang CM**, Hsieh MS, Yang TC, Hsieh VC, Chiang JH, Huang HH, How CK, Hu SY, Yen DH. Selective serotonin reuptake inhibitors and the risk of hepatocellular carcinoma in hepatitis B virus-infected patients.

- Cancer Manag Res* 2017; **9**: 709-720 [PMID: [29238221](#) DOI: [10.2147/CMAR.S148097](#)]
- 21 **Amaral JF**, Thompson WR, Caldwell MD, Martin HF, Randall HT. Prospective hematologic evaluation of gastric exclusion surgery for morbid obesity. *Ann Surg* 1985; **201**: 186-193 [PMID: [3970598](#) DOI: [10.1097/00000658-198502000-00009](#)]
- 22 **Ponsky TA**, Brody F, Pucci E. Alterations in gastrointestinal physiology after Roux-en-Y gastric bypass. *J Am Coll Surg* 2005; **201**: 125-131 [PMID: [15978453](#) DOI: [10.1016/j.jamcollsurg.2005.03.021](#)]
- 23 **Gletsu-Miller N**, Wright BN. Mineral malnutrition following bariatric surgery. *Adv Nutr* 2013; **4**: 506-517 [PMID: [24038242](#) DOI: [10.3945/an.113.004341](#)]
- 24 **Cottam DR**, Mattar SG, Barinas-Mitchell E, Eid G, Kuller L, Kelley DE, Schauer PR. The chronic inflammatory hypothesis for the morbidity associated with morbid obesity: implications and effects of weight loss. *Obes Surg* 2004; **14**: 589-600 [PMID: [15186624](#) DOI: [10.1381/096089204323093345](#)]
- 25 **Chen CY**, Fujimiya M, Laviano A, Chang FY, Lin HC, Lee SD. Modulation of ingestive behavior and gastrointestinal motility by ghrelin in diabetic animals and humans. *J Chin Med Assoc* 2010; **73**: 225-229 [PMID: [20685586](#) DOI: [10.1016/S1726-4901\(10\)70048-4](#)]
- 26 **Agrawal V**, Krause KR, Chengelis DL, Zalesin KC, Rocher LL, McCullough PA. Relation between degree of weight loss after bariatric surgery and reduction in albuminuria and C-reactive protein. *Surg Obes Relat Dis* 2009; **5**: 20-26 [PMID: [18951068](#) DOI: [10.1016/j.soard.2008.07.011](#)]
- 27 **Anty R**, Dahman M, Iannelli A, Gual P, Staccini-Myx A, Amor IB, Luciani N, Saint-Paul MC, Huet PM, Sadoul JL, Srai SK, Unwin R, Gugenheim J, Le Marchand-Brustel Y, Tran A, Bekri S. Bariatric surgery can correct iron depletion in morbidly obese women: a link with chronic inflammation. *Obes Surg* 2008; **18**: 709-714 [PMID: [18330662](#) DOI: [10.1007/s11695-007-9276-y](#)]
- 28 **Guralnik JM**, Eisenstaedt RS, Ferrucci L, Klein HG, Woodman RC. Prevalence of anemia in persons 65 years and older in the United States: evidence for a high rate of unexplained anemia. *Blood* 2004; **104**: 2263-2268 [PMID: [15238427](#) DOI: [10.1182/blood-2004-05-1812](#)]
- 29 **Chang PJ**, Chen PC, Hsieh CJ, Chiu LT. Risk factors on the menstrual cycle of healthy Taiwanese college nursing students. *Aust N Z J Obstet Gynaecol* 2009; **49**: 689-694 [PMID: [20070725](#) DOI: [10.1111/j.1479-828X.2009.01097.x](#)]
- 30 **Wei S**, Schmidt MD, Dwyer T, Norman RJ, Venn AJ. Obesity and menstrual irregularity: associations with SHBG, testosterone, and insulin. *Obesity (Silver Spring)* 2009; **17**: 1070-1076 [PMID: [19180069](#) DOI: [10.1038/oby.2008.641](#)]
- 31 **Schumann K**, Elsenhans B, Forth W, Schroeder P. Intestinal iron transfer after ileojejunal transposition. *Digestion* 1991; **50**: 182-193 [PMID: [1812044](#) DOI: [10.1159/000200760](#)]
- 32 **Smith CD**, Herkes SB, Behms KE, Fairbanks VF, Kelly KA, Sarr MG. Gastric acid secretion and vitamin B12 absorption after vertical Roux-en-Y gastric bypass for morbid obesity. *Ann Surg* 1993; **218**: 91-96 [PMID: [8328834](#) DOI: [10.1097/00000658-199307000-00014](#)]
- 33 **Salminen P**, Helmiö M, Ovaska J, Juuti A, Leivonen M, Peromaa-Haavisto P, Hurme S, Soinio M, Nuutila P, Victorzon M. Effect of Laparoscopic Sleeve Gastrectomy vs Laparoscopic Roux-en-Y Gastric Bypass on Weight Loss at 5 Years Among Patients With Morbid Obesity: The SLEEVEPASS Randomized Clinical Trial. *JAMA* 2018; **319**: 241-254 [PMID: [29340676](#) DOI: [10.1001/jama.2017.20313](#)]
- 34 **Shoar S**, Saber AA. Long-term and midterm outcomes of laparoscopic sleeve gastrectomy versus Roux-en-Y gastric bypass: a systematic review and meta-analysis of comparative studies. *Surg Obes Relat Dis* 2017; **13**: 170-180 [PMID: [27720197](#) DOI: [10.1016/j.soard.2016.08.011](#)]



Published by **Baishideng Publishing Group Inc**
7041 Koll Center Parkway, Suite 160, Pleasanton, CA 94566, USA

Telephone: +1-925-3991568

E-mail: bpgoffice@wjgnet.com

Help Desk: <https://www.f6publishing.com/helpdesk>

<https://www.wjgnet.com>

