

# World Journal of *Clinical Oncology*

*World J Clin Oncol* 2022 June 24; 13(6): 423-552



## Contents

Monthly Volume 13 Number 6 June 24, 2022

## OPINION REVIEW

- 423 Implementation of a virtual multicenter gastrointestinal tumor board to reduce cancer disparities in Argentina

*Esteso F, Tissera NS, O'Connor JM, Luca R, Huertas E, Sánchez Loria F, Pedraza I, Pairola A, Brancato F, Paganini L, Kucharczyk M, Amat M, Pombo MT, Galli M, Bruno L, Caro L, Rodriguez A, Enrico D, Waisberg F, Chacón M*

## REVIEW

- 429 New perspectives in the management of small cell lung cancer

*Pangua C, Rogado J, Serrano-Montero G, Belda-Sanchis J, Álvarez Rodríguez B, Torrado L, Rodríguez De Dios N, Mielgo-Rubio X, Trujillo JC, Couñago F*

- 448 Immunotherapy for advanced hepatocellular carcinoma: From clinical trials to real-world data and future advances

*Rallis KS, Makrakis D, Ziogas IA, Tsoulfas G*

## MINIREVIEWS

- 473 Circulating tumor DNA for diagnosis, prognosis and treatment of gastrointestinal malignancies

*Kirchweiger P, Wundsam HV, Rumpold H*

- 485 Current treatment landscape for oligometastatic non-small cell lung cancer

*Garde-Noguera J, Martín-Martín M, Obeso A, López-Mata M, Crespo IR, Pelari-Mici L, Juan Vidal O, Mielgo-Rubio X, Trujillo-Reyes JC, Couñago F*

## ORIGINAL ARTICLE

## Basic Study

- 496 Molecular docking of DS-3032B, a mouse double minute 2 enzyme antagonist with potential for oncology treatment development

*da Mota VHS, Freire de Melo F, de Brito BB, Silva FAFD, Teixeira KN*

- 505 Nicotinic receptors modulate antitumor therapy response in triple negative breast cancer cells

*Español A, Sanchez Y, Salem A, Obregon J, Sales ME*

## Retrospective Study

- 520 Risk factors for lymph node metastasis in patients with pancreatic neuroendocrine neoplasms

*Nakao Y, Hayashi H, Yamashita YI, Takashi O, Matsumura K, Uemura N, Kitamura F, Itoyama R, Yusa T, Taki K, Miyata T, Higashi T, Nakagawa S, Okabe H, Imai K, Baba H*

## Prospective Study

- 529 Significance of serum carcinoembryonic antigen in metastatic breast cancer patients: A prospective study

*Anoop TM, Joseph P R, Soman S, Chacko S, Mathew M*

**CASE REPORT**

- 540** Epstein-Barr virus-associated smooth muscle tumors in immunocompromised patients: Six case reports  
*Khan AA, Estfan BN, Yalamanchali A, Niang D, Savage EC, Fulmer CG, Gosnell HL, Modaresi Esfeh J*

**ABOUT COVER**

Editorial Board Member of *World Journal of Clinical Oncology*, Divya Khosla, MD, Associate Professor, Department of Radiation Oncology, Postgraduate Institute of Medical Education and Research, Sector 12, Chandigarh 160012, India. dr\_divya\_khosla@yahoo.com

**AIMS AND SCOPE**

The primary aim of *World Journal of Clinical Oncology* (WJCO, *World J Clin Oncol*) is to provide scholars and readers from various fields of oncology with a platform to publish high-quality basic and clinical research articles and communicate their research findings online.

WJCO mainly publishes articles reporting research results and findings obtained in the field of oncology and covering a wide range of topics including art of oncology, biology of neoplasia, breast cancer, cancer prevention and control, cancer-related complications, diagnosis in oncology, gastrointestinal cancer, genetic testing for cancer, gynecologic cancer, head and neck cancer, hematologic malignancy, lung cancer, melanoma, molecular oncology, neurooncology, palliative and supportive care, pediatric oncology, surgical oncology, translational oncology, and urologic oncology.

**INDEXING/ABSTRACTING**

The WJCO is now abstracted and indexed in PubMed, PubMed Central, Emerging Sources Citation Index (Web of Science), Reference Citation Analysis, China National Knowledge Infrastructure, China Science and Technology Journal Database, and Superstar Journals Database. The 2021 edition of Journal Citation Reports® cites the 2020 Journal Citation Indicator (JCI) for WJCO as 0.48.

**RESPONSIBLE EDITORS FOR THIS ISSUE**

Production Editor: Wen-Wen Qi; Production Department Director: Xu Guo; Editorial Office Director: Ze-Mao Gong.

**NAME OF JOURNAL**

*World Journal of Clinical Oncology*

**ISSN**

ISSN 2218-4333 (online)

**LAUNCH DATE**

November 10, 2010

**FREQUENCY**

Monthly

**EDITORS-IN-CHIEF**

Hiten RH Patel, Stephen Safe, Jian-Hua Mao, Ken H Young

**EDITORIAL BOARD MEMBERS**

<https://www.wjnet.com/2218-4333/editorialboard.htm>

**PUBLICATION DATE**

June 24, 2022

**COPYRIGHT**

© 2022 Baishideng Publishing Group Inc

**INSTRUCTIONS TO AUTHORS**

<https://www.wjnet.com/bpg/gerinfo/204>

**GUIDELINES FOR ETHICS DOCUMENTS**

<https://www.wjnet.com/bpg/GerInfo/287>

**GUIDELINES FOR NON-NATIVE SPEAKERS OF ENGLISH**

<https://www.wjnet.com/bpg/gerinfo/240>

**PUBLICATION ETHICS**

<https://www.wjnet.com/bpg/GerInfo/288>

**PUBLICATION MISCONDUCT**

<https://www.wjnet.com/bpg/gerinfo/208>

**ARTICLE PROCESSING CHARGE**

<https://www.wjnet.com/bpg/gerinfo/242>

**STEPS FOR SUBMITTING MANUSCRIPTS**

<https://www.wjnet.com/bpg/GerInfo/239>

**ONLINE SUBMISSION**

<https://www.f6publishing.com>



## Implementation of a virtual multicenter gastrointestinal tumor board to reduce cancer disparities in Argentina

Federico Estes, Natalia Soledad Tissera, Juan Manuel O'Connor, Romina Luca, Eduardo Huertas, Fernando Sánchez Loria, Ivana Pedraza, Alejandro Pairola, Fernando Brancato, Lisandro Paganini, Mariana Kucharczyk, Mora Amat, Maria Teresa Pombo, Mariana Galli, Luisina Bruno, Luis Caro, Andrés Rodríguez, Diego Enrico, Federico Waisberg, Matías Chacón

**Specialty type:** Oncology

**Provenance and peer review:**

Unsolicited article; Externally peer reviewed.

**Peer-review model:** Single blind

**Peer-review report's scientific quality classification**

Grade A (Excellent): A  
Grade B (Very good): B, B  
Grade C (Good): C  
Grade D (Fair): 0  
Grade E (Poor): 0

**P-Reviewer:** Dhali A, India; El-Nakeep S, Egypt; Tsagkaris C, Switzerland

**A-Editor:** Liu X, China

**Received:** January 13, 2022

**Peer-review started:** January 14, 2022

**First decision:** March 24, 2022

**Revised:** April 10, 2022

**Accepted:** June 4, 2022

**Article in press:** June 4, 2022

**Published online:** June 24, 2022



**Federico Estes, Natalia Soledad Tissera, Juan Manuel O'Connor, Romina Luca, Luisina Bruno,** Department of Gastrointestinal Medical Oncology, Instituto Alexander Fleming, Buenos Aires 1426, Argentina

**Eduardo Huertas, Fernando Sánchez Loria, Ivana Pedraza, Alejandro Pairola, Fernando Brancato,** Department of Surgery, Instituto Alexander Fleming, Buenos Aires 1426, Argentina

**Lisandro Paganini, Mariana Kucharczyk,** Department of Radiology, Instituto Alexander Fleming, Buenos Aires 1426, Argentina

**Mora Amat, Maria Teresa Pombo,** Department of Pathology, Instituto Alexander Fleming, Buenos Aires 1426, Argentina

**Mariana Galli,** Department of Radiation Oncology, Instituto Alexander Fleming, Buenos Aires 1426, Argentina

**Luis Caro,** Department of Gastroenterology, Instituto Alexander Fleming, Buenos Aires 1426, Argentina

**Andrés Rodríguez, Diego Enrico, Federico Waisberg, Matías Chacón,** Department of Medical Oncology, Instituto Alexander Fleming, Buenos Aires 1426, Argentina

**Corresponding author:** Federico Estes, MD, Department of Gastrointestinal Medical Oncology, Instituto Alexander Fleming, 1180 Crámer, Buenos Aires 1426, Argentina.  
[federico.esteso@yahoo.com](mailto:federico.esteso@yahoo.com)

### Abstract

Given the increasing complexity of cancer care, multidisciplinary tumor boards have become essential in daily clinical oncology practice. The Project Extension for Community Healthcare Outcomes (ECHO) initiative developed an innovative telementoring model using a "hub and spoke" design consisting of a team of experts (hub) that offers a full service to multiple participants (the spokes) during regularly scheduled sessions discussing patients' clinical cases. The Alexander Fleming Cancer Institute in Buenos Aires was the first hub in Latin America to implement Project ECHO for gastrointestinal tumors. In our 3-year experience, 80 patients from 37 centers were evaluated within Project ECHO and a range of three

to five cases were discussed in each meeting. From our perspective, the impact of this novel approach was a remarkable strategy to reduce care disparities by equalizing access to high-quality medical knowledge in a multidisciplinary environment for medical discussions. Additionally, it was shown to have a cost-effective impact directly on the patients and the local health system, since relevant costs were saved after unnecessary treatments, studies and travel expenses were avoided.

**Key Words:** Tumor board; Virtual; Gastrointestinal; Cancer disparities; Oncology; Extension for Community Healthcare Outcomes project

©The Author(s) 2022. Published by Baishideng Publishing Group Inc. All rights reserved.

**Core Tip:** Tumor boards (TBs) have existed for the last 50 years, and at the present time, represent an essential strategy in daily clinical oncology practice. We reported our positive experience and perspective with a novel approach of multidisciplinary virtual TBs using an innovative telementoring model called Project Extension for Community Healthcare Outcomes. This first experience in Latin America for gastrointestinal tumors has shown to reduce care disparities by equalizing access to high-quality medical knowledge in a context of a multidisciplinary environment for medical discussions.

**Citation:** Esteso F, Tissera NS, O'Connor JM, Luca R, Huertas E, Sánchez Loria F, Pedraza I, Pairola A, Brancato F, Paganini L, Kucharczyk M, Amat M, Pombo MT, Galli M, Bruno L, Caro L, Rodriguez A, Enrico D, Waisberg F, Chacón M. Implementation of a virtual multicenter gastrointestinal tumor board to reduce cancer disparities in Argentina. *World J Clin Oncol* 2022; 13(6): 423-428

**URL:** <https://www.wjgnet.com/2218-4333/full/v13/i6/423.htm>

**DOI:** <https://dx.doi.org/10.5306/wjco.v13.i6.423>

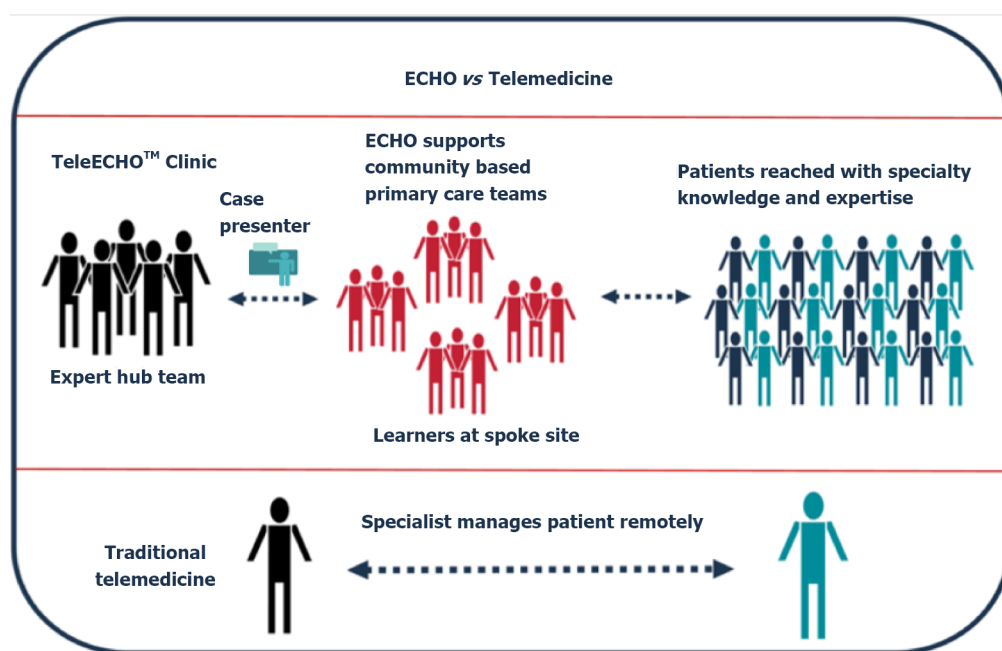
## INTRODUCTION

During recent decades, cancer care has become increasingly complex mainly due to the personalized approach for every single patient. Each patient requires a careful assessment which often involves a multidisciplinary effort and experienced physicians. However, many countries experience the centralization of tertiary referral cancer units in the most populated cities. In many urban centers in Argentina, medical oncologists provide care for patients with multiple types of cancer which challenges practitioners to stay current with the evidence that is necessary to deliver high-quality care. However, given the increasing knowledge of cancer, and the observed trend of subspecialization among oncologists, tumor boards (TBs) have become a widely accepted and successful strategy to promote discussion and evidence-based decisions in a scenario with unequal health access[1,2].

A TB is a multidisciplinary treatment planning approach in which health professionals with different specialties review and discuss the diagnosis and treatment strategies using an integrative approach[3]. In the past few years, TBs have incorporated virtual modalities to make them accessible in remote locations, promoting timely diagnostic and treatment planning for patients in different regions and socioeconomic settings.

In this context, Project Extension for Community Healthcare Outcomes (ECHO) created by Dr. Sanjeev Arora in 2003 in New Mexico, EEUU, uses video conferencing technology to discuss cases and treat rural cases of hepatitis-C[4]. It aims to reduce health disparities by allowing clinicians to share current medical knowledge in underserved and remote areas to cooperate with the care of patients with hepatitis C through innovative telementoring. The ECHO model uses a hub-and-spoke knowledge-sharing approach where expert teams lead virtual meetings amplifying the capacity for providers to deliver best-in-practice care to underserved areas in their communities (Figure 1)[5]. This "hub and spoke" design consists of a model that arranges a network consisting of a team of experts (the hub) that offers a full service to multiple participants (the spokes) during regularly scheduled sessions where patients with clinical cases that need a more accurate treatment are discussed[6,7]. The use of this design also provides the capability to facilitate clinical mentoring and the implementation of regular educational sessions for medical training. Thus, the ECHO approach represents a completely different model than "telemedicine", wherein a specialist assumes the care of a patient in a typical consultation by using remote technology.

Currently, over 373 academic centers serve as ECHO hubs for multiple severe medical conditions such as infectious diseases, rheumatologic diseases, chronic pain, addiction, human immunodeficiency virus, diabetes, complex multisystem diseases and cancer[8,9].



**Figure 1 Extension for Community Healthcare Outcomes hub and spoke model.** Citation: ECHO. Project ECHO. [cited 11 August 2021]. Available from: <https://hsc.unm.edu/echo/>. Copyright© Project ECHO 2022. Published by ECHO.

Multidisciplinary virtual TBs represent an opportunity to reduce the existing care disparities by information equality. Under this premise, the Alexander Fleming Cancer Institute in Buenos Aires was the first hub in Latin America to implement Project ECHO for gastrointestinal tumors. Since December 2017, monthly virtual meetings (an hour and a half long) using videoconferencing software have been performed to discuss cases of gastrointestinal cancer. The participating physicians had primary practices in academic and community general hospitals in at least 8 provinces of Argentina. The central hub staff was composed of surgeons, radiotherapists, imaging specialists, pathologists, genetic counselors, gastroenterologists and medical oncologists specifically dedicated to gastrointestinal cancer care. The modality included a case-based discussion followed by a moderated discussion with a final medical recommendation taking into account local available resources. The first 15 min of each meeting were dedicated to an educational lecture.

In our 3-year experience, 80 patients were evaluated within the Project ECHO, and a range of three to five cases was discussed in each meeting (Table 1). During the first 2 years, 15 health centers regularly participated in the virtual meetings. Notably, exponential growth was observed concurrently with the coronavirus disease 2019 (COVID-19) quarantine. Since June 2020, professionals from an average of 37 centers have habitually participated in these monthly meetings. Of note, each participating institution decided and proposed to the expert hub team the most relevant clinical cases that required a multidisciplinary discussion to the expert hub team. The median time from the first oncology visit until the ECHO referral was 16 d (range 12-19).

Most patients included in the program were diagnosed with colorectal cancer ( $n = 43$ , 53.75%), followed by neuroendocrine ( $n = 14$ , 17.5%), esophagogastric ( $n = 12$ , 15%), biliodigestive ( $n = 7$ , 8.75%), anal ( $n = 3$ , 3.75%) and appendix ( $n = 1$ , 1.25%) tumors. Most patients had advanced disease at the time of presentation to the TB ( $n = 28$ , 40%). Case discussions included systemic treatment for the advanced scenario, surgical approaches, and adjuvant decisions. Of note, the suggested strategies were mostly managed at local places ( $n = 60$ , 75%); other patients were referred to the Alexander Fleming Cancer Institute or tertiary health care centers ( $n = 8$ , 10%) for surgery or chemotherapy ( $n = 10$ , 12.5%) and a minority of cases were referred for radiotherapy ( $n = 2$ , 2.5%). Notably, during the COVID-19 pandemic period, only 6% of the patients were suggested to receive centralized treatment at a tertiary center. In addition, participant satisfaction was evaluated by a centralized digital survey provided to 30 professionals showing the highest level of satisfaction in 25 (83%) participants.

TBs have existed for the last 50 years and have been proven to improve medical training and, in the long run, patient care[10]. Under current conditions, Project ECHO emerges as a collaborative and integrative networking environment for cancer management in remote locations. The impact of novel virtual TB approaches in Argentina is a remarkable strategy to reduce care disparities by equalizing access to a multidisciplinary environment for medical discussions. Furthermore, these models have proven to be consistently cost-effective. Available evidence has highlighted that relevant costs were saved after unnecessary treatments, studies and travel expenses were avoided. The latter is particularly relevant, considering the vast extensions of Argentina[11-14]. As a typical example, a patient with a specific gastrointestinal tumor who would need to travel and have a consultation at a reference cancer



**Table 1 Characteristics**

Characteristics	n = 80
<b>Age (range)</b>	57 yr (48-68)
<b>Sex</b>	
Male	45 (56.25%)
Female	35 (43.75%)
<b>Tumor type</b>	
Colorectal cancer	43 (53.75%)
Neuroendocrine	14 (17.5%)
Esophagogastric	12 (15%)
Biliodigestive	7 (8.75%)
Anal	3 (3.75%)
Appendix	1 (1.25%)
<b>Stage</b>	
Locally/locally advanced	52 (65%)
Metastatic	28 (35%)
<b>Treatment strategy management</b>	
Local institution	60 (75%)
Referred to specialized cancer center	20 (25%)
<b>Reference areas of Argentina (Province)</b>	
North	40 (50%)
Center	24 (30%)
South	16 (20%)

center in Argentina would have to spend approximately 500 USD regardless of the study and treatment. Additionally, in terms of saving time, this strategy could normally take approximately 3 more weeks in delaying the treatment plan decision in Argentina.

Our health system is heterogeneous, including the private and public sub-systems. Under this circumstance, some patients have to be referred to tertiary or local centers for coverage of treatment and studies to become effective. We believe that the discussion of the clinical cases in a context such as the ECHO initiative represents one of the better chances for high-quality cancer care considering that the referral does not cause a significant delay in the treatment. In our health system context, the virtual ECHO initiative would be more accessible, accurate, affordable and properly developable than the strategy of extending more sub-specialized oncologists in urban and suburban areas.

Our Project ECHO experience has led us to address some important factors that should be improved upon in the future. Internet access, low-quality video-conferencing devices and protected time availability are some of the key areas to expand in the future. The participation of professionals with non-oncology medical specialties should also be promoted to facilitate a comprehensive discussion of the multiple dimensions that are involved in cancer care.

One of the potential limitations of the virtual TB approach could be the lack of complete information on the clinical case for proper and personalized clinical decision-making, given that the medical opinions of the board are based on the case presentation and not on the direct evaluation of the patient. Additionally, monthly meetings may not meet the demand, mainly in situations when a medical decision is urgent.

Although limited, our experience was extremely positive. We are convinced that this strong professional network also creates a unique opportunity to promote national evidence-based recommendations, academic collaborations and clinical cancer research, as well as continuing medical education programs.



## CONCLUSION

In our view, multidisciplinary virtual experiences, such as the Project ECHO, should be carefully addressed by health care decision-makers given their popularity and their demonstrated cost-effectiveness. Many of the evaluated barriers require government participation to improve budget and technology access in health care facilities. The COVID-19 pandemic has led to a tremendous need to incorporate modern technology into different work scenarios. Under these circumstances, the implementation of virtual educational and medical activities may be one of the key elements that cannot be excluded in the design and execution of National Cancer Control Programs.

## FOOTNOTES

**Author contributions:** Esteso F and Tissera NS contributed to the conception and design; Enrico D and Waisberg F performed the administrative support; Esteso F and Tissera NS contributed to the collection and assembly of data; Esteso F, Tissera NS, Enrico D, Waisberg F and Andrés R contributed to the data analysis and interpretation; All authors performed the provision of study materials or patients, manuscript writing, final approval of manuscript and are accountable for all aspects of the work.

**Conflict-of-interest statement:** All the authors report no relevant conflicts of interest for this article.

**Open-Access:** This article is an open-access article that was selected by an in-house editor and fully peer-reviewed by external reviewers. It is distributed in accordance with the Creative Commons Attribution NonCommercial (CC BY-NC 4.0) license, which permits others to distribute, remix, adapt, build upon this work non-commercially, and license their derivative works on different terms, provided the original work is properly cited and the use is non-commercial. See: <https://creativecommons.org/licenses/by-nc/4.0/>

**Country/Territory of origin:** Argentina

**ORCID number:** Federico Esteso 0000-0003-1977-9846; Natalia Soledad Tissera 0000-0002-3396-6878; Juan Manuel O'Connor 0000-0002-6975-5466; Romina Luca 0000-0001-8564-905X; Eduardo Huertas 0000-0003-3473-0928; Fernando Sánchez Loria 0000-0001-9708-0649; Ivana Pedraza 0000-0001-9679-8368; Alejandro Pairola 0000-0001-5046-3343; Fernando Brancato 0000-0001-9112-7303; Lisandro Paganini 0000-0002-8692-0347; Mariana Kucharczyk 0000-0002-1629-9700; Mora Amat 0000-0001-8257-0004; Maria Teresa Pombo 0000-0002-4336-8855; Mariana Galli 0000-0003-0147-2192; Luisina Bruno 0000-0003-4901-1627; Luis Caro 0000-0002-5819-8035; Andrés Rodríguez 0000-0002-0880-3153; Diego Enrico 0000-0003-4121-6855; Federico Waisberg 0000-0003-4435-5068; Matías Chacón 0000-0001-6872-4185.

**S-Editor:** Fan JR

**L-Editor:** Filipodia

**P-Editor:** Fan JR

## REFERENCES

1. Taberna M, Gil Moncayo F, Jané-Salas E, Antonio M, Arribas L, Vilajosana E, Peralvez Torres E, Mesía R. The Multidisciplinary Team (MDT) Approach and Quality of Care. *Front Oncol* 2020; **10**: 85 [PMID: 32266126 DOI: 10.3389/fonc.2020.00085]
2. Specchia ML, Friscale EM, Carini E, Di Pilla A, Cappa D, Barbara A, Ricciardi W, Damiani G. The impact of tumor board on cancer care: evidence from an umbrella review. *BMC Health Serv Res* 2020; **20**: 73 [PMID: 32005232 DOI: 10.1186/s12913-020-4930-3]
3. Definition of tumor board review. NCI Dictionary of Cancer Terms - National Cancer Institute 2011. [cited 11 August 2021]. Available from: <https://www.cancer.gov/publications/dictionaries/cancer-terms/def/tumor-board-review>
4. Arora S, Thornton K, Murata G, Deming P, Kalishman S, Dion D, Parish B, Burke T, Pak W, Dunkelberg J, Kistin M, Brown J, Jenkushy S, Komaromy M, Qualls C. Outcomes of treatment for hepatitis C virus infection by primary care providers. *N Engl J Med* 2011; **364**: 2199-2207 [PMID: 21631316 DOI: 10.1056/NEJMoa1009370]
5. ECHO. Project ECHO. [cited 11 August 2021]. Available from: <https://hsc.unm.edu/echo/>
6. Singh DA. Essentials of the U.S. Health Care System. Jones & Bartlett Publishers; 2015: 421
7. Elrod JK, Fortenberry JL Jr. The hub-and-spoke organization design: an avenue for serving patients well. *BMC Health Serv Res* 2017; **17**: 457 [PMID: 28722550 DOI: 10.1186/s12913-017-2341-x]
8. ECHO. Hubs & Programs [Internet]. [cited 11 August 2021]. Available from: <https://hsc.unm.edu/echo/data-marketplace/interactive-dashboards/>
9. ECHO. Superhubs: sitios de formación de ECHO [Internet]. [cited 11 August 2021]. Available from: <https://es.hsc.unm.edu/echo/get-involved/superhubs.html>
10. Quero G, Salvatore L, Fiorillo C, Bagalà C, Menghi R, Maria B, Cina C, Laterza V, Di Stefano B, Maratta MG, Ribelli M, Galiandro F, Mattiucci GC, Brizi MG, Genco E, D'Aversa F, Zileri L, Attili F, Larghi A, Perri V, Inzani F, Gasbarrini A, Valentini V, Costamagna G, Manfredi R, Tortora G, Alfieri S. The impact of the multidisciplinary tumor board (MDTB) on the management of pancreatic diseases in a tertiary referral center. *ESMO Open* 2021; **6**: 100010 [PMID: 33399076 DOI: 10.1016/j.esmoop.2021.100010]

[10.1016/j.esmoop.2020.100010](https://doi.org/10.1016/j.esmoop.2020.100010)]

- 11 **Eckman MH**, Gordon SC, Talal A, Schiff ER, Sherman KE. Cost-Effectiveness of Screening for Chronic Hepatitis C Infection in the United States. *Hepatology* 2012; **56**: 191A-1144A
- 12 **Wong JB**, Thornton KA, Carroll C, Arora S. Cost-effectiveness of Hepatitis C Treatment by Primary Care Providers Supported by the Extension for Community Healthcare Outcomes (ECHO) Model. *Hepatology* 2013; **58**: 328A-331A
- 13 **Brandão M**, Guisseve A, Bata G, Firmino-Machado J, Alberto M, Ferro J, Garcia C, Zaqueu C, Jamisse A, Lorenzoni C, Piccart-Gebhart M, Leitão D, Come J, Soares O, Gudo-Morais A, Schmitt F, Tulsidás S, Carrilho C, Lunet N. Survival Impact and Cost-Effectiveness of a Multidisciplinary Tumor Board for Breast Cancer in Mozambique, Sub-Saharan Africa. *Oncologist* 2021; **26**: e996-e1008 [PMID: [33325595](https://pubmed.ncbi.nlm.nih.gov/33325595/) DOI: [10.1002/onco.13643](https://doi.org/10.1002/onco.13643)]
- 14 **Kočo L**, Weekenstroo HHA, Lambregts DMJ, Sedelaar JPM, Prokop M, Fütterer JJ, Mann RM. The Effects of Multidisciplinary Team Meetings on Clinical Practice for Colorectal, Lung, Prostate and Breast Cancer: A Systematic Review. *Cancers (Basel)* 2021; **13** [PMID: [34439312](https://pubmed.ncbi.nlm.nih.gov/34439312/) DOI: [10.3390/cancers13164159](https://doi.org/10.3390/cancers13164159)]



Published by **Baishideng Publishing Group Inc**  
7041 Koll Center Parkway, Suite 160, Pleasanton, CA 94566, USA

**Telephone:** +1-925-3991568

**E-mail:** [bpgoffice@wjgnet.com](mailto:bpgoffice@wjgnet.com)

**Help Desk:** <https://www.f6publishing.com/helpdesk>

<https://www.wjgnet.com>

