

World Journal of *Orthopedics*

World J Orthop 2017 December 18; 8(12): 853-967



**EDITORIAL**

- 853 Update on mesenchymal stem cell therapies for cartilage disorders
Paschos NK, Sennett ML

MINIREVIEWS

- 861 New insights in the treatment of acromioclavicular separation
van Bergen CJA, van Bommel AF, Alta TDW, van Noort A
- 874 Transforaminal Percutaneous Endoscopic Discectomy using Transforaminal Endoscopic Spine System technique: Pitfalls that a beginner should avoid
Kapetanakis S, Gkasdaris G, Angoules AG, Givissis P

ORIGINAL ARTICLE**Basic Study**

- 881 Role of fast-setting cements in arthroplasty: A comparative analysis of characteristics
Caraan NA, Windhager R, Webb J, Zentgraf N, Kuehn KD
- 891 Augmented reality: The use of the PicoLinker smart glasses improves wire insertion under fluoroscopy
Hiranaka T, Fujishiro T, Hida Y, Shibata Y, Tsubosaka M, Nakanishi Y, Okimura K, Uemoto H

Case Control Study

- 895 Season of the year influences infection rates following total hip arthroplasty
Rosas S, Ong AC, Buller LT, Sabeh KG, Law T, Roche MW, Hernandez VH

Retrospective Cohort Study

- 902 Do Not Resuscitate status as an independent risk factor for patients undergoing surgery for hip fracture
Brovman EY, Pisansky AJ, Beverly A, Bader AM, Urman RD
- 913 Anterolateral rotatory instability *in vivo* correlates tunnel position after anterior cruciate ligament reconstruction using bone-patellar tendon-bone graft
Tashiro Y, Okazaki K, Murakami K, Matsubara H, Osaki K, Iwamoto Y, Nakashima Y

Retrospective Study

- 922 Evaluation of 1031 primary titanium nitride coated mobile bearing total knee arthroplasties in an orthopedic clinic
Breugem SJM, Linnartz J, Sierevelt I, Bruijn JD, Driessen MJM

- 929** Acetabular cup version modelling and its clinical applying on plain radiograms

Denisov A, Bilyk S, Kovalenko A

Observational Study

- 935** Deepening trochleoplasty combined with balanced medial patellofemoral ligament reconstruction for an adequate graft tensioning

von Engelhardt LV, Weskamp P, Lahner M, Spahn G, Jerosch J

SYSTEMATIC REVIEWS

- 946** Antibiotic bone cement's effect on infection rates in primary and revision total knee arthroplasties

Kleppel D, Stirton J, Liu J, Ebraheim NA

- 956** Systematic review of bone marrow stimulation for osteochondral lesion of talus - evaluation for level and quality of clinical studies

Yasui Y, Ramponi L, Seow D, Hurley ET, Miyamoto W, Shimozono Y, Kennedy JG

CASE REPORT

- 964** Acute compartment syndrome of the thigh following hip replacement by anterior approach in a patient using oral anticoagulants

Hogerzeil DP, Muradin I, Zwitter EW, Jansen JA

ABOUT COVER

Editorial Board Member of *World Journal of Orthopedics*, Chunfeng Zhao, MD, Professor, Research Scientist, Department of Orthopedic Surgery, Mayo Clinic, Rochester, MN 55905, United States

AIM AND SCOPE

World Journal of Orthopedics (*World J Orthop*, *WJO*, online ISSN 2218-5836, DOI: 10.5312) is a peer-reviewed open access academic journal that aims to guide clinical practice and improve diagnostic and therapeutic skills of clinicians.

WJO covers topics concerning arthroscopy, evidence-based medicine, epidemiology, nursing, sports medicine, therapy of bone and spinal diseases, bone trauma, osteoarthritis, bone tumors and osteoporosis, minimally invasive therapy, diagnostic imaging. Priority publication will be given to articles concerning diagnosis and treatment of orthopedic diseases. The following aspects are covered: Clinical diagnosis, laboratory diagnosis, differential diagnosis, imaging tests, pathological diagnosis, molecular biological diagnosis, immunological diagnosis, genetic diagnosis, functional diagnostics, and physical diagnosis; and comprehensive therapy, drug therapy, surgical therapy, interventional treatment, minimally invasive therapy, and robot-assisted therapy.

We encourage authors to submit their manuscripts to *WJO*. We will give priority to manuscripts that are supported by major national and international foundations and those that are of great basic and clinical significance.

INDEXING/ABSTRACTING

World Journal of Orthopedics is now indexed in Emerging Sources Citation Index (Web of Science), PubMed, PubMed Central and Scopus.

FLYLEAF

I-III Editorial Board

EDITORS FOR THIS ISSUE

Responsible Assistant Editor: *Xiang Li*
Responsible Electronic Editor: *Ya-Jing Lu*
Proofing Editor-in-Chief: *Lian-Sheng Ma*

Responsible Science Editor: *Li-Jun Cui*
Proofing Editorial Office Director: *Xiu-Xia Song*

NAME OF JOURNAL
World Journal of Orthopedics

ISSN
ISSN 2218-5836 (online)

LAUNCH DATE
November 18, 2010

FREQUENCY
Monthly

EDITORS-IN-CHIEF
Quanjun (Trey) Cui, MD, Professor, Department of Orthopaedic Surgery, School of Medicine, University of Virginia, Charlottesville, VA 22908, United States

Bao-Gan Peng, MD, PhD, Professor, Department of Spinal Surgery, General Hospital of Armed Police Force, Beijing 100039, China

EDITORIAL BOARD MEMBERS
All editorial board members resources online at <http://www.wjgnet.com>

www.wjgnet.com/2218-5836/editorialboard.htm

EDITORIAL OFFICE
Xiu-Xia Song, Director
World Journal of Orthopedics
Baishideng Publishing Group Inc
7901 Stoneridge Drive, Suite 501, Pleasanton, CA 94588, USA
Telephone: +1-925-2238242
Fax: +1-925-2238243
E-mail: editorialoffice@wjgnet.com
Help Desk: <http://www.fgpublishing.com/helpdesk>
<http://www.wjgnet.com>

PUBLISHER
Baishideng Publishing Group Inc
7901 Stoneridge Drive,
Suite 501, Pleasanton, CA 94588, USA
Telephone: +1-925-2238242
Fax: +1-925-2238243
E-mail: bpgoffice@wjgnet.com
Help Desk: <http://www.fgpublishing.com/helpdesk>
<http://www.wjgnet.com>

PUBLICATION DATE
December 18, 2017

COPYRIGHT
© 2017 Baishideng Publishing Group Inc. Articles published by this Open-Access journal are distributed under the terms of the Creative Commons Attribution Non-commercial License, which permits use, distribution, and reproduction in any medium, provided the original work is properly cited, the use is non commercial and is otherwise in compliance with the license.

SPECIAL STATEMENT
All articles published in journals owned by the Baishideng Publishing Group (BPG) represent the views and opinions of their authors, and not the views, opinions or policies of the BPG, except where otherwise explicitly indicated.

INSTRUCTIONS TO AUTHORS
<http://www.wjgnet.com/bpg/gerinfo/204>

ONLINE SUBMISSION
<http://www.fgpublishing.com>

Retrospective Study

Acetabular cup version modelling and its clinical applying on plain radiograms

Anton Denisov, Stanislav Bilyk, Anton Kovalenko

Anton Denisov, Stanislav Bilyk, Anton Kovalenko, Orthopedic Department, Vreden Russian Research Institute of Traumatology and Orthopedics, St. Petersburg 195427, Russia

ORCID number: Anton Denisov (0000-0001-8113-2395); Stanislav Bilyk (0000-0002-7123-5582); Anton Kovalenko (0000-0003-4536-6834).

Author contributions: Kovalenko A designed the study and analyzed data; Bilyk S performed three-dimensional modeling part; Denisov A revised the manuscript for important intellectual content and in couple with expert-doctor from United States made the translation in English.

Institutional review board statement: The study “Acetabular cup version modelling and its clinical applying on plain radiograms” was approved by the Institutional Review Board (IRB) of the Vreden Scientific Orthopedic Institute, Saint-Petersburg, Russian Federation.

Informed consent statement: Patients were not required to give informed consent to the study because in retrospective analysis were used anonymous data that were obtained after each patient agreed to treatment by written consent.

Conflict-of-interest statement: Dr. Denisov has nothing to disclose. Dr. Kovalenko has nothing to disclose. Dr. Bilyk has nothing to disclose.

Data sharing statement: No additional data are available. No data are shared with another study as this manuscript and related data were not published elsewhere.

Open-Access: This article is an open-access article which was selected by an in-house editor and fully peer-reviewed by external reviewers. It is distributed in accordance with the Creative Commons Attribution Non Commercial (CC BY-NC 4.0) license, which permits others to distribute, remix, adapt, build upon this work non-commercially, and license their derivative works on different terms, provided the original work is properly cited and the use is non-commercial. See: <http://creativecommons.org/licenses/by-nc/4.0/>

Manuscript source: Unsolicited manuscript

Correspondence to: Anton Denisov, Academic Fellow,

Orthopedic Department, Vreden Russian Research Institute of Traumatology and Orthopedics, Baykova Street 8, St. Petersburg 195427, Russia. denisov1993@gmail.com

Telephone: +7-812-6708687

Fax: +7-812-6708688

Received: August 1, 2017

Peer-review started: August 25, 2017

First decision: September 20, 2017

Revised: October 20, 2017

Accepted: November 8, 2017

Article in press: November 8, 2017

Published online: December 18, 2017

Abstract

AIM

To measure the sensitivity and specificity of the cup version assessment by using only anteroposterior hip and pelvis views, evaluate the incidence of inadequate cup version in patients with repeated dislocations after total hip arthroplasty (THA).

METHODS

Radiographic retrospective analysis of 2 groups of patients, with follow up of 6-60 mo, after undergoing primary THA. First group of 32 patients (20 female, 12 male) with unilateral THA (32 hips) required early revision arthroplasty for reasons of dislocation. The mean age and mode were 59 (from 38 to 83) and 66 ages respectively. The average body mass index (BMI) was 24.2 (from 17.7 to 36.3), mode 23.9. Second group was consisted of 164 patients (101 female, 63 male) without dislocations during the follow-up period (170 hips). Among them 6 patients required bilateral THA. The mean age was 60 (from 38 to 84) and mode 59. BMI was 24.8 (17.2-36.8), mode 25.2. Clinical significance of the cup anteversion sign was estimated with cross tabulation 2 × 2.

RESULTS

The value of the χ^2 yates was 10.668 ($P < 0.01$).

Sensitivity of SAI (sign of anteversion insufficiency) was 29% (95%CI: 9%-46%), and specificity was 92% (95%CI: 88%-96%). Relative risk of dislocation in patients with SAI was 3.4 (95%CI: 1.8-6.3).

CONCLUSION

This method provides the surgeons with the ability to perform a reliable and simple qualitative assessment of the acetabular component version. It can be useful during patient examination with early loosening of the implant, dislocations, and impingement. Additionally, it can provide necessary information during planning of revision surgery, especially when considering question about cup replacement, although final assessment of the cup position should be done with a computed tomography scan.

Key words: Hip arthroplasty; Acetabular component; Retroversion; Dislocation

© **The Author(s) 2017.** Published by Baishideng Publishing Group Inc. All rights reserved.

Core tip: The acetabular cup position is a crucial factor of normal function and implant survival. Several methods to determine cup anteversion are described. Among them are mathematical methods based on a standard anteroposterior (AP) view, modifications of a cross-table lateral views, and computed tomography-scan. Latter two methods are not always available or practical in outpatient setting. The purpose of our study was to estimate sensitivity, specificity of the cup version assessment by using only AP hip and pelvis views. Our findings suggest that inadequate anteversion sign appears when the anteversion angle is less than half the angle between X-ray beams in the AP hip and pelvis views.

Denisov A, Bilyk S, Kovalenko A. Acetabular cup version modelling and its clinical applying on plain radiograms. *World J Orthop* 2017; 8(12): 929-934 Available from: URL: <http://www.wjgnet.com/2218-5836/full/v8/i12/929.htm> DOI: <http://dx.doi.org/10.5312/wjo.v8.i12.929>

INTRODUCTION

Compared to most other orthopedic interventions, total hip arthroplasty (THA) is only a first step in a lengthy journey. Successful patient outcome relies heavily on the implant, which requires regular observation to assess the prosthesis and surrounding tissues. It is well known that bearing surface wear rate and prosthesis stability are dependent upon proper component positioning^[1-3]. Thus, timely recognition of component malposition is a major goal in the postoperative period. Early awareness may allow for a timely correction of acetabular cup position and expedited return to daily activities without undesirable effects of improper component alignment. Two main parameters that must be taken into account

while assessing acetabular component position are inclination and anteversion. Inclination is a measure of the angle between longitudinal axis (line drawn between the teardrops) and acetabular axis (cup tilt). Cup version measurement, on the other hand, poses a greater challenge.

Calculation of this angle can be achieved via several techniques. These methods are based on the evaluation of a visible ellipse on anteroposterior (AP) view as a result of cup rotation. Previously described techniques by Pradhan, Acland, Lewinnek are often used^[4], as well as specialized software which can provide calculation of cup version^[5], and even orthopedic grid calipers which approximate this calculation^[6]. However, none of these techniques can differentiate cup ellipse appearance in patients with same degree of anteversion vs retroversion. This issue can be resolved by using a cross-table lateral view or computed tomography (CT) scan^[7], both of which are seldom used due to challenge with patient position in the early postoperative period and concerns for radiation exposure.

To measure the sensitivity and specificity of the cup version assessment by using only AP hip and pelvis views and evaluate the incidence of inadequate cup version in patients with repeated dislocations after THA.

MATERIALS AND METHODS

Cup shadows in retroversion and anteversion were reproduced on AP hip and pelvis views using Autodesk 3ds Max software (Autodesk, Inc., San Rafael, CA, United States) (Figure 1). Difference in angles of cup version, which may be seen as a result of difference between X-ray beams centered on AP hip and pelvis views, were subsequently analyzed. The distance from the beam source to the screen was 100 cm, the distance from the cup model to the screen was 15 cm, and the cup diameter was 50 mm. Cup version angles ranged from -20 to 20 degrees in one degree intervals. The shift of the source beam between AP pelvis and AP hip views was 12 cm. Acquired data was used for radiographic retrospective analysis of 2 groups of patients, with follow up of 6-60 mo, after undergoing primary THA.

First group of 32 patients (20 female, 12 male) with unilateral THA (32 hips) required early revision arthroplasty for reasons of dislocation. The mean age and mode were 59 years (38-83) and 66 years respectively. Average BMI was 24.2 (17.7-36.3), mode 23.9.

Second group consisted of 164 patients (101 female, 63 male) without dislocations during the follow-up period (170 hips). Among them 6 patients required bilateral THA. The average age was 60 years (38-84) and mode 59 years. BMI was 25.1 (17.2-36.8), mode 25.2. Clinical significance of cup anteversion sign was estimated with cross tabulation 2 × 2.

RESULTS

Three-dimension modelling revealed that the widths

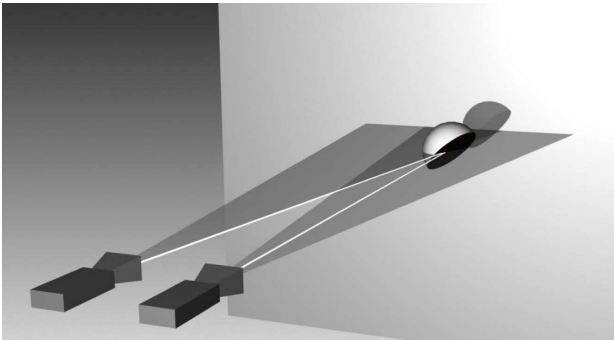


Figure 1 The scheme of model of anteroposterior pelvis view (X-ray source on the left) and anteroposterior hip view (X-ray source on the right) for acetabular cup of left hip.

of the ellipse-shaped shadow formed by the projection of the cup base to the screen are distinct in different views (Figure 2). The shadow ellipse width appears less pronounced in AP pelvis view as compared to AP hip view when the cup is anteverted (Figure 3). On the other hand, the observed shadow profile is greater in AP pelvis view as compared to AP hip view when cup is retroverted (Figure 4). A sign of retroversion was also noted when true anteversion angle did not exceed 1/2 of the angle between X-ray beam in different views (AP hip and AP pelvis). Ellipse width profiles were equal between 2 projections at the point where true anteversion was 3.5 degrees (Figure 5).

Doubling the distance of medialization of the source beam (12 to 24 cm) from the AP hip to AP pelvis position, this threshold increased in a linear manner from 3.5 degrees to 7 degrees. Retro- or anteversion angle was confirmed with a CT scan among patients having indications for revision arthroplasty (Figure 6). For discrete X-rays assessment, we assigned expression of sign shown on Figure 2 to the sign of anteversion (SA), and all others options (Figures 3 and 4) to sign of anteversion insufficiency (SAI). Thus, two options were available in assessment of cup position on X-rays-SA and SAI. Findings are presented in Table 1.

The value of the χ^2 Yates was 10.668 ($P < 0.01$). Sensitivity of SAI was 29% (95%CI: 9%-46%), and specificity was 92% (95%CI: 88%-96%). Relative risk of dislocation in patients with SAI was 3.4 (95%CI: 1.8-6.3).

Predictiveness (positive predictive value) of SAI (predictive probability dislocation appearance) was 0.20 (95%CI: 0.09-0.38). Counter-predictiveness (Counter-negative predictive value) of SA (predictive probability dislocation absence) was only 0.046 (95%CI: 0.026-0.081) (Figure 7).

DISCUSSION

The method of this investigation was described by Markel *et al.*^[8] in 2007. However, the authors only described the technique and recommended its use as a screening tool without reporting its sensitivity and

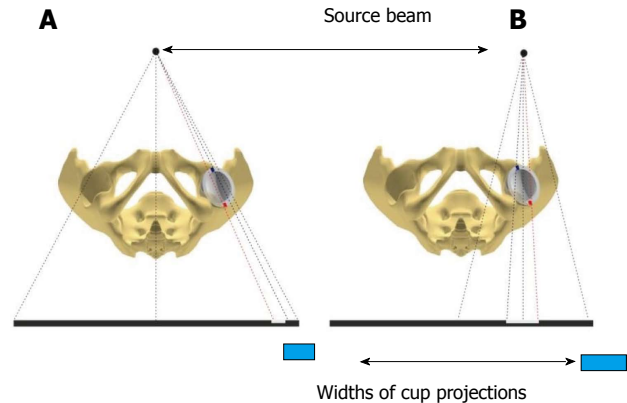


Figure 2 Different width of cup projections in pelvic and hip anteroposterior views. A: Pelvic anteroposterior views; B: Hip anteroposterior views.

specificity.

Threshold value for the sign inversion corresponds to the cup anteversion value that is equal to 1/2 of the X-ray beam angle penetrating the acetabular component in AP hip and AP pelvis views. The threshold value was only 3.5° in baseline conditions of our experiment. The version sign can appear retroverted in the cases when true cup anteversion is less than the threshold values. Thus, the sign can point to retroversion while the cup is, in fact, anteverted. However, in such cases, anteversion value will be out of Lewinnek's safety zone of 10°-20°^[9] and further imaging would be encouraged. For these cases, we recommend the use of special views or a CT-scan to refine implant position.

In clinical practice threshold value, will depend on the patient anthropometric parameters which affect cup distance to the X-ray detector and the distance between centers of pelvis and hip joint. Nevertheless, two-fold shift in the beam source, compared to our model baseline condition, leads to increase in sign of inversion threshold up to 7°. This either corresponds to patient with a pelvis twice as wide than average^[10] or, to a beam centered in front of a contralateral joint instead of symphysis pubis, which is unlikely. In addition, method accuracy can be affected by improper beam centering during radiography.

Low sensitivity (29%) and predictiveness (positive predictive value) of SAI (20%) can be explained by multifactorial causes of dislocation such as stem position, offset, muscle insufficiency and comorbidities. On other hand, specificity of SA (92%) points to a high probability to find SA in a patient without dislocation. Furthermore, counter-predictiveness (counter-negative predictive value) of SA points to the probability that dislocation can occur with frequency of only 4.6%. This data leads us to believe that these radiographic signs have a strong clinical relevance and can be useful in orthopedic practice.

X-ray assessment immediately after surgery or during outpatient follow-up, when lateral view is not available, can be limited to evaluation of cup inclination and ellipse presence that suggests about probable

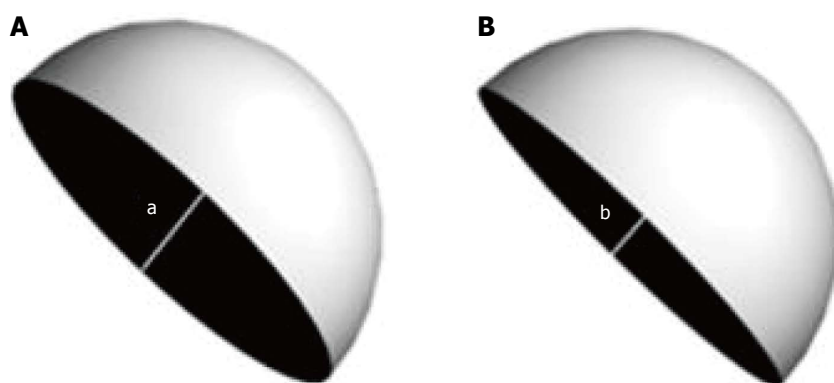


Figure 3 Acetabular component with anteversion angle of 20 degrees. A: Acetabular component image for hip AP view; B: Acetabular component image for pelvic AP view, $a > b$. AP: Anteroposterior.

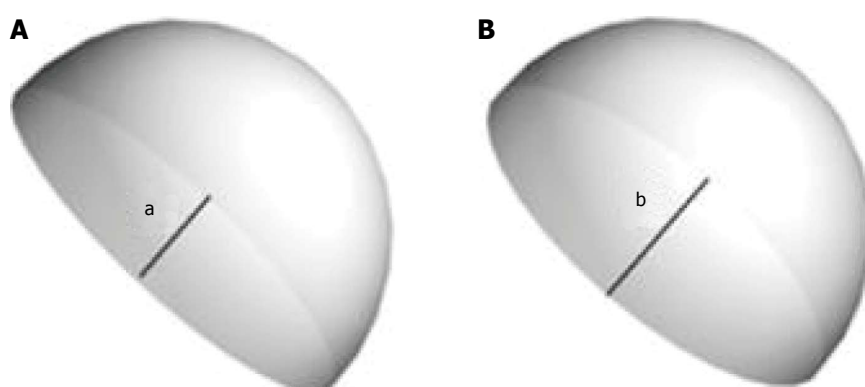


Figure 4 Acetabular component with retroversion angle of 20 degrees. A: Acetabular component image for AP hip view; B: Acetabular component image for AP pelvic view, $a < b$. AP: Anteroposterior.

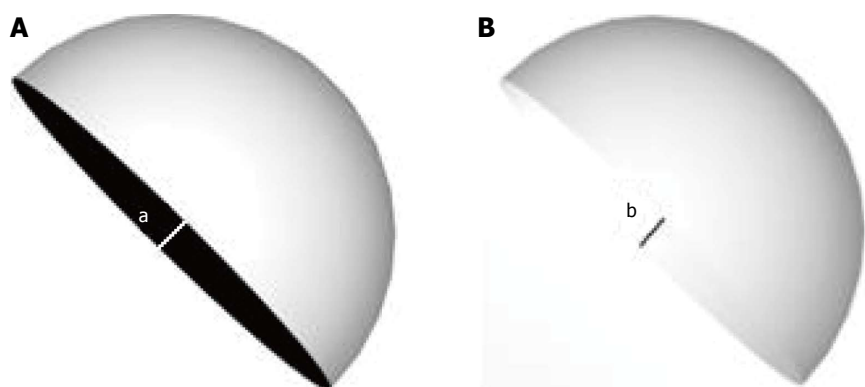


Figure 5 Acetabular component views with anteversion angle equal to half angle between rays of the beam. A: Acetabular component image for hip AP view; B: Acetabular component image for pelvic AP view. Equal width of ellipse in both views, $a = b$. AP: Anteroposterior.

cup version. However, a bias exists because of a two-dimensional nature of conventional X-ray views. Additional comparison of cup position on AP hip and AP pelvis views allows to avoid this bias. This simple method is useful as a screening assessment of post-op cup position and, in outpatient and remote follow-up. Furthermore, it can be used for X-ray assessment in patients with early components loosening, dislocations, impingement and preoperative revision planning, especially when there is a possibility of avoiding an

acetabular cup revision. In the last example provided, we recommend performing a CT-scan for additional analysis.

On the other hand, high incidence of retroversion sign confirms clinical relevance of this method in the group of patients who required early revision surgery for the reason of hip dislocations. Postoperative radiographic evaluation is usually limited to measuring of inclination and cup ellipse, may be indirect evidence of anteversion. Such assessment methodology can

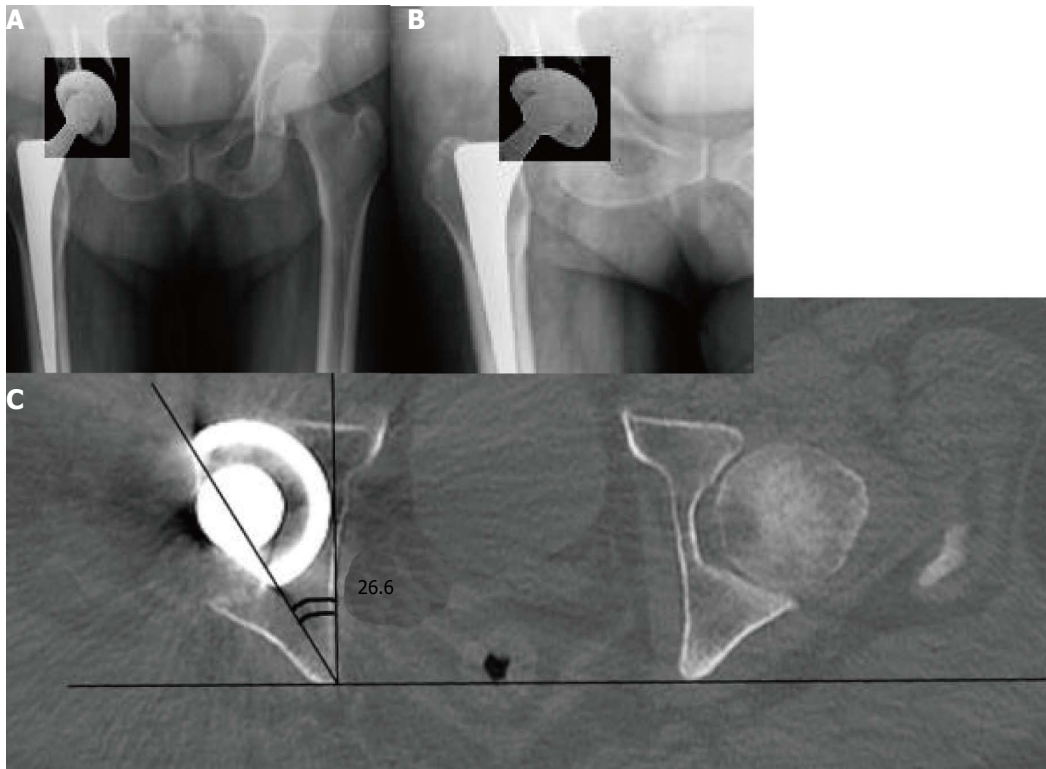


Figure 6 Retroversion sign in a patient with recurrent hip dislocations (enhanced contrasting applied to provide better recognition of acetabular cup ellipse). A: AP Pelvic view; B: AP hip views; C: CT-scan of the same patient confirming acetabular component retroversion. AP: Anteroposterior.

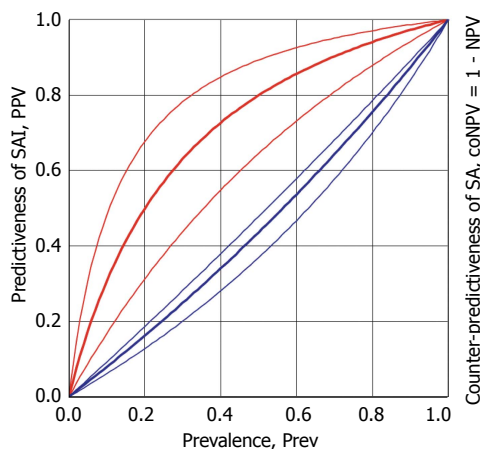


Figure 7 Predictiveness of sign of anteversion insufficiency appearance and counter-predictiveness of sign of anteversion appearance. SAI: Sign of anteversion insufficiency; SA: Sign of anteversion.

have an error due to plain radiography imaging features described above. Additional comparison of pelvic AP and hip AP view allows the possibility to eliminate this error during radiographic evaluation and decreases the probability of early hip joint instability. This simple radiographic test can be used both for screening assessment of acetabular cup version on postoperative images and in outpatient setting.

This method provides surgeons with ability to use it as a screening examination because of the simplicity of the acetabular component version qualitative assessment. It can be useful during patient examination

Table 1 Prevalence of sign of anteversion insufficiency and sign of anteversion in patients with absence and recurrence of dislocations after primary total hip arthroplasty

X-ray diagnostic conclusion	Dislocation		Total
	Yes	No	
SAI	9	12	21
SA	23	158	181
Total	32	170	202

SAI: Sign of anteversion insufficiency; SA: Sign of anteversion.

with suspicion of the implant malposition, early implant loosening, dislocations and impingement to provide with the argument for obtaining CT scan. Additionally, it can provide necessary information during planning of revision surgery, especially when considering question about cup replacement, although final assessment of the cup position should be done with a CT scan.

ARTICLE HIGHLIGHTS

Research background

Correct cup positioning is one of the crucial factors of preventing hip luxation after total hip arthroplasty (THA). It can be estimated using simple radiographic views (AP of pelvis and hip) and calculating of the cup inclination angle.

Research motivation

Some techniques can provide calculation of cup version, however none of these techniques can differentiate cup ellipse appearance in patients with same degree of anteversion vs retroversion. It can be resolved by using a cross-table

lateral view or CT scan, both of which are seldom used due to challenge with patient position in the early postoperative period and concerns for radiation exposure and sometimes not available in orthopedic practice.

Research objectives

The authors measured the sensitivity and specificity of the cup version assessment by using AP hip and pelvis views, evaluated the incidence of inadequate version in patients with repeated dislocations after THA. The authors believe that estimation of simple radiographic anteversion sign can be used for screening assessment for further obtaining of additional examinations in case of cup malposition and repeated dislocations (as one of the provoking factor).

Research methods

Cup shadows in retroversion and anteversion were reproduced on AP hip and pelvis views using Autodesk 3ds Max software (Autodesk, Inc., San Rafael, CA, United States). Difference in angles of cup version, which may be seen as a result of difference between X-ray beams centered on AP hip and pelvis views, were subsequently analyzed. Acquired data was used for analysis of 2 groups of patients, with follow up of 6-60 mo, after undergoing primary THA.

Research results

The value of the χ^2 yates was 10.668 ($P < 0.01$). A sign of retroversion was also noted when true anteversion angle did not exceed 1/2 of the angle between X-ray beam in different views (AP hip and AP pelvis). Sensitivity of SAI was 29% (95%CI: 9%-46%), and specificity was 92% (95%CI: 88%-96%). Relative risk of dislocation in patients with SAI was 3.4 (95%CI: 1.8-6.3).

Research conclusions

Results of our study showed high specificity of the sign of anteversion inclination 92% and low sensitivity (29%) due to other risk factors of hip dislocation.

Research perspectives

In this article were not studied other factors provoking hip dislocation. That is way for future perspectives, the authors want to determine the current role of the cup malposition in comparison with other factors of hip luxation.

REFERENCES

- 1 **Korduba LA**, Essner A, Pivec R, Lancin P, Mont MA, Wang A, Delanois RE. Effect of acetabular cup abduction angle on wear of ultrahigh-molecular-weight polyethylene in hip simulator testing. *Am J Orthop* (Belle Mead NJ) 2014; **43**: 466-471 [PMID: 25303445]
- 2 **Williams D**, Royle M, Norton M. Metal-on-metal hip resurfacing: the effect of cup position and component size on range of motion to impingement. *J Arthroplasty* 2009; **24**: 144-151 [PMID: 18823742 DOI: 10.1016/j.arth.2008.07.021]
- 3 **Barrack RL**. Dislocation after total hip arthroplasty: implant design and orientation. *J Am Acad Orthop Surg* 2003; **11**: 89-99 [PMID: 12670135 DOI: 10.5435/00124635-200303000-00003]
- 4 **Nho JH**, Lee YK, Kim HJ, Ha YC, Suh YS, Koo KH. Reliability and validity of measuring version of the acetabular component. *J Bone Joint Surg Br* 2012; **94**: 32-36 [PMID: 22219244 DOI: 10.1302/0301-620x.94b1.27621]
- 5 **Tiberi JV**, Pulos N, Kertznar M, Schmalzried TP. A more reliable method to assess acetabular component position. *Clin Orthop Relat Res* 2012; **470**: 471-476 [PMID: 21822569 DOI: 10.1007/s11999-011-2006-8]
- 6 **Liaw CK**, Yang RS, Hou SM, Wu TY, Fuh CS. Measurement of the acetabular cup anteversion on simulated radiographs. *J Arthroplasty* 2009; **24**: 468-474 [PMID: 18534457 DOI: 10.1016/j.arth.2007.10.029]
- 7 **Esposito CI**, Gladnick BP, Lee YY, Lyman S, Wright TM, Mayman DJ, Padgett DE. Cup position alone does not predict risk of dislocation after hip arthroplasty. *J Arthroplasty* 2015; **30**: 109-113 [PMID: 25249516 DOI: 10.1016/j.arth.2014.07.009]
- 8 **Markel DC**, Andary JL, Pagano P, Nasser S. Assessment of acetabular version by plain radiograph. *Am J Orthop* (Belle Mead NJ) 2007; **36**: 39-41 [PMID: 17460875]
- 9 **Lewinnek GE**, Lewis JL, Tarr R, Compere CL, Zimmerman JR. Dislocations after total hip-replacement arthroplasties. *J Bone Joint Surg Am* 1978; **60**: 217-220 [PMID: 641088 DOI: 10.2106/00004623-197860020-00014]
- 10 **Bouffard V**, Begon M, Champagne A, Farhadnia P, Vendittoli PA, Lavigne M, Prince F. Hip joint center localisation: A biomechanical application to hip arthroplasty population. *World J Orthop* 2012; **3**: 131-136 [PMID: 22919569 DOI: 10.5312/wjo.v3.i8.131]

P- Reviewer: Angoules A, Cartmell S, Chen YK, Georgiev GPP, Liu JY

S- Editor: Ji FF **L- Editor:** A **E- Editor:** Lu YJ





Published by **Baishideng Publishing Group Inc**
7901 Stoneridge Drive, Suite 501, Pleasanton, CA 94588, USA
Telephone: +1-925-223-8242
Fax: +1-925-223-8243
E-mail: bpgoffice@wjgnet.com
Help Desk: <http://www.f6publishing.com/helpdesk>
<http://www.wjgnet.com>

