

# World Journal of *Gastroenterology*

*World J Gastroenterol* 2017 April 21; 23(15): 2635-2818



**EDITORIAL**

- 2635 Dietary compliance in celiac disease

*Freeman HJ*

- 2640 Is there still a role for the hepatic locoregional treatment of metastatic neuroendocrine tumors in the era of systemic targeted therapies?

*Cavalcoli F, Rausa E, Conte D, Nicolini AF, Massironi S*

**REVIEW**

- 2651 Hepatitis B virus infection and alcohol consumption

*Iida-Ueno A, Enomoto M, Tamori A, Kawada N*

- 2660 Endoscopic management of pancreatic fluid collections-revisited

*Nabi Z, Basha J, Reddy DN*

**ORIGINAL ARTICLE****Basic Study**

- 2673 Overexpression of fibrinogen-like protein 2 protects against T cell-induced colitis

*Bartczak A, Zhang J, Adeyi O, Amir A, Grant D, Gorczynski R, Selzner N, Chruscinski A, Levy GA*

- 2685 Changes in human hepatic metabolism in steatosis and cirrhosis

*Schofield Z, Reed MAC, Newsome PN, Adams DH, Günther UL, Lalor PF*

- 2696 Effect of *Lactobacillus rhamnosus* HN001 and *Bifidobacterium longum* BB536 on the healthy gut microbiota composition at phyla and species level: A preliminary study

*Toscano M, De Grandi R, Stronati L, De Vecchi E, Drago L*

- 2705 Effects of Hwangryunhaedok-tang on gastrointestinal motility function in mice

*Kim H, Kim I, Lee MC, Kim HJ, Lee GS, Kim H, Kim BJ*

- 2716 Role of  $\Delta 133p53$  isoform in NF- $\kappa$ B inhibitor PDTC-mediated growth inhibition of MKN45 gastric cancer cells

*Zhang HM, Sang XG, Wang YZ, Cui C, Zhang L, Ji WS*

**Retrospective Cohort Study**

- 2723 Optimal treatment for Siewert type II and III adenocarcinoma of the esophagogastric junction: A retrospective cohort study with long-term follow-up

*Hosoda K, Yamashita K, Moriya H, Mieno H, Watanabe M*

## Retrospective Study

- 2731 Colorectal and interval cancers of the Colorectal Cancer Screening Program in the Basque Country (Spain)

*Portillo I, Arana-Arri E, Idigoras I, Bilbao I, Martínez-Indart L, Bujanda L, Gutierrez-Ibarluzea I*

- 2743 Performance of 18-fluoro-2-deoxyglucose positron emission tomography for esophageal cancer screening

*Sekiguchi M, Terauchi T, Kakugawa Y, Shimada N, Saito Y, Matsuda T*

- 2750 Association of obesity with
- Helicobacter pylori*
- infection: A retrospective study

*Xu MY, Liu L, Yuan BS, Yin J, Lu QB*

- 2757 Outcomes and prognostic factors of patients with stage IB and II A pancreatic cancer according to the 8
- <sup>th</sup>
- edition American Joint Committee on Cancer criteria

*Li Y, Tang CG, Zhao Y, Cao WY, Qu GF*

## Clinical Trials Study

- 2763 Patients with non-viral liver disease have a greater tumor burden and less curative treatment options when diagnosed with hepatocellular carcinoma

*Mohsen W, Rodov M, Prakoso E, Charlton B, Bowen DG, Koorey DJ, Shackel NA, McCaughan GW, Strasser SI*

- 2771 Urinary metabolomics analysis identifies key biomarkers of different stages of nonalcoholic fatty liver disease

*Dong S, Zhan ZY, Cao HY, Wu C, Bian YQ, Li JY, Cheng GH, Liu P, Sun MY*

## Observational Study

- 2785 Age-related impairment of esophagogastric junction relaxation and bolus flow time

*Cock C, Besanko LK, Burgstad CM, Thompson A, Kritas S, Heddle R, Fraser RJL, Omari TI*

- 2795 Endoscopic ultrasound-guided cutting of holes and deep biopsy for diagnosis of gastric infiltrative tumors and gastrointestinal submucosal tumors using a novel vertical diathermic loop

*Liu YM, Yang XJ*

- 2802 Non-ALT biomarkers for markedly abnormal liver histology among Chinese persistently normal alanine aminotransferase-chronic hepatitis B patients

*Cheng JL, Wang XL, Yang SG, Zhao H, Wu JJ, Li LJ*

## CASE REPORT

- 2811 One step minilaparotomy-assisted transmesenteric portal vein recanalization combined with transjugular intrahepatic portosystemic shunt placement: A novel surgical proposal in pediatrics

*Pelizzo G, Quaretti P, Moramarco LP, Corti R, Maestri M, Iacob G, Calcaterra V*

## ABOUT COVER

Editorial board member of *World Journal of Gastroenterology*, Oya Yucel, PhD, Associate Professor, Pediatric Department, Baskent University, Istanbul Teaching and Medical Research Hospital, Istanbul 34662, Turkey

## AIMS AND SCOPE

*World Journal of Gastroenterology* (*World J Gastroenterol*, *WJG*, print ISSN 1007-9327, online ISSN 2219-2840, DOI: 10.3748) is a peer-reviewed open access journal. *WJG* was established on October 1, 1995. It is published weekly on the 7<sup>th</sup>, 14<sup>th</sup>, 21<sup>st</sup>, and 28<sup>th</sup> each month. The *WJG* Editorial Board consists of 1375 experts in gastroenterology and hepatology from 68 countries.

The primary task of *WJG* is to rapidly publish high-quality original articles, reviews, and commentaries in the fields of gastroenterology, hepatology, gastrointestinal endoscopy, gastrointestinal surgery, hepatobiliary surgery, gastrointestinal oncology, gastrointestinal radiation oncology, gastrointestinal imaging, gastrointestinal interventional therapy, gastrointestinal infectious diseases, gastrointestinal pharmacology, gastrointestinal pathophysiology, gastrointestinal pathology, evidence-based medicine in gastroenterology, pancreatology, gastrointestinal laboratory medicine, gastrointestinal molecular biology, gastrointestinal immunology, gastrointestinal microbiology, gastrointestinal genetics, gastrointestinal translational medicine, gastrointestinal diagnostics, and gastrointestinal therapeutics. *WJG* is dedicated to become an influential and prestigious journal in gastroenterology and hepatology, to promote the development of above disciplines, and to improve the diagnostic and therapeutic skill and expertise of clinicians.

## INDEXING/ABSTRACTING

*World Journal of Gastroenterology* (*WJG*) is now indexed in Current Contents<sup>®</sup>/Clinical Medicine, Science Citation Index Expanded (also known as SciSearch<sup>®</sup>), Journal Citation Reports<sup>®</sup>, Index Medicus, MEDLINE, PubMed, PubMed Central, Digital Object Identifier, and Directory of Open Access Journals. The 2015 edition of Journal Citation Reports<sup>®</sup> released by Thomson Reuters (ISI) cites the 2015 impact factor for *WJG* as 2.787 (5-year impact factor: 2.848), ranking *WJG* as 38 among 78 journals in gastroenterology and hepatology (quartile in category Q2).

## FLYLEAF

### I-IX Editorial Board

## EDITORS FOR THIS ISSUE

Responsible Assistant Editor: Xiang Li  
Responsible Electronic Editor: Fen-Fen Zhang  
Proofing Editor-in-Chief: Lian-Sheng Ma

Responsible Science Editor: Ze-Mao Gong  
Proofing Editorial Office Director: Jin-Lei Wang

NAME OF JOURNAL  
*World Journal of Gastroenterology*

ISSN  
ISSN 1007-9327 (print)  
ISSN 2219-2840 (online)

LAUNCH DATE  
October 1, 1995

FREQUENCY  
Weekly

EDITORS-IN-CHIEF  
**Damian Garcia-Olmo, MD, PhD, Doctor, Professor, Surgeon**, Department of Surgery, Universidad Autonoma de Madrid; Department of General Surgery, Fundacion Jimenez Diaz University Hospital, Madrid 28040, Spain

**Stephen C Strom, PhD, Professor**, Department of Laboratory Medicine, Division of Pathology, Karolinska Institutet, Stockholm 141-86, Sweden

**Andrzej S Tarnawski, MD, PhD, DSc (Med), Professor of Medicine, Chief Gastroenterology**, VA Long Beach Health Care System, University of California, Irvine, CA, 5901 E. Seventh Str., Long Beach,

CA 90822, United States

EDITORIAL BOARD MEMBERS  
All editorial board members resources online at <http://www.wjgnet.com/1007-9327/editorialboard.htm>

EDITORIAL OFFICE  
Jin-Lei Wang, Director  
Yuan Qi, Vice Director  
Ze-Mao Gong, Vice Director  
*World Journal of Gastroenterology*  
Baishideng Publishing Group Inc  
7901 Stoneridge Drive, Suite 501,  
Pleasanton, CA 94588, USA  
Telephone: +1-925-2238242  
Fax: +1-925-2238243  
E-mail: [editorialoffice@wjgnet.com](mailto:editorialoffice@wjgnet.com)  
Help Desk: <http://www.f6publishing.com/helpdesk>  
<http://www.wjgnet.com>

PUBLISHER  
Baishideng Publishing Group Inc  
7901 Stoneridge Drive, Suite 501,  
Pleasanton, CA 94588, USA  
Telephone: +1-925-2238242  
Fax: +1-925-2238243  
E-mail: [bpoffice@wjgnet.com](mailto:bpoffice@wjgnet.com)  
Help Desk: <http://www.f6publishing.com/helpdesk>

<http://www.wjgnet.com>

PUBLICATION DATE  
April 21, 2017

COPYRIGHT  
© 2017 Baishideng Publishing Group Inc. Articles published by this Open-Access journal are distributed under the terms of the Creative Commons Attribution Non-commercial License, which permits use, distribution, and reproduction in any medium, provided the original work is properly cited, the use is non commercial and is otherwise in compliance with the license.

SPECIAL STATEMENT  
All articles published in journals owned by the Baishideng Publishing Group (BPG) represent the views and opinions of their authors, and not the views, opinions or policies of the BPG, except where otherwise explicitly indicated.

INSTRUCTIONS TO AUTHORS  
Full instructions are available online at <http://www.wjgnet.com/bpg/gerinfo/204>

ONLINE SUBMISSION  
<http://www.f6publishing.com>

## Clinical Trials Study

# Patients with non-viral liver disease have a greater tumor burden and less curative treatment options when diagnosed with hepatocellular carcinoma

Waled Mohsen, Marcia Rodov, Emilia Prakoso, Barbara Charlton, David G Bowen, David J Koorey, Nicholas A Shackel, Geoffrey W McCaughan, Simone I Strasser

Waled Mohsen, Marcia Rodov, Emilia Prakoso, Barbara Charlton, David G Bowen, David J Koorey, Nicholas A Shackel, Geoffrey W McCaughan, Simone I Strasser, AW Morrow Gastroenterology and Liver Centre, Royal Prince Alfred Hospital, Sydney NSW 2050, Australia

**Author contributions:** Mohsen W analysed data, wrote the paper and completed statistics; Rodov M collected and analysed data and assisted with the manuscript; Prakoso E, Bowen DG, Koorey DJ, Shackel NA and McCaughan GW added clinic patients to the prospective database; Charlton B maintained the prospective database; Strasser SI designed the research study, supervised researchers, obtained ethics approval, set up the database, contributed to the manuscript.

**Institutional review board statement:** The clinical database and this study were approved by the SLHD Ethics Review Committee (Royal Prince Alfred Zone).

**Informed consent statement:** Informed consent was given by all participants of the study prior to inclusion.

**Conflict-of-interest statement:** There are no conflicts of interests recorded for this study.

**Data sharing statement:** Technical appendix, statistical code, and dataset available from the first author at [wmoh6298@uni.sydney.edu.au](mailto:wmoh6298@uni.sydney.edu.au). Participants gave informed consent for data sharing. No additional data is available.

**Open-Access:** This article is an open-access article which was selected by an in-house editor and fully peer-reviewed by external reviewers. It is distributed in accordance with the Creative Commons Attribution Non Commercial (CC BY-NC 4.0) license, which permits others to distribute, remix, adapt, build upon this work non-commercially, and license their derivative works on different terms, provided the original work is properly cited and the use is non-commercial. See: <http://creativecommons.org/licenses/by-nc/4.0/>

**Manuscript source:** Unsolicited manuscript

**Correspondence to:** Dr. Mohsen Waled, AW Morrow Gastroenterology and Liver Centre, Royal Prince Alfred Hospital Missenden, Rd Camperdown, Sydney NSW 2050, Australia. [wmoh6298@uni.sydney.edu.au](mailto:wmoh6298@uni.sydney.edu.au)  
Telephone: +61-4-21967316  
Fax: +61-2-95158242

**Received:** November 8, 2016

**Peer-review started:** November 8, 2016

**First decision:** December 19, 2016

**Revised:** January 8, 2017

**Accepted:** March 6, 2017

**Article in press:** March 6, 2017

**Published online:** April 21, 2017

## Abstract

### AIM

To assess the impact of underlying liver disease etiology on the presenting features and outcomes in a large cohort of patients with hepatocellular carcinoma (HCC).

### METHODS

A prospective database of all patients with HCC was established from 1998 to March 2012. One thousand and seventy-eight patients were categorized into three groups, based on the etiology of their liver disease: hepatitis B virus (HBV), hepatitis C virus (HCV) and non-viral liver disease (NVLD). Overall survival was determined by Kaplan Meier analysis to time of death or last follow-up.

### RESULTS

HCC patients with HCV (85%) were more likely to be diagnosed as part of a surveillance program, compared to HBV or NVLD (both 71%) ( $P < 0.001$ ). Patients with NVLD were more likely to receive best supportive



care (29%) compared to those with HBV (21%) or HCV (20%) ( $P < 0.02$ ). Twelve percent of NVLD and 13% of HBV patients underwent liver transplantation compared to 21% of HCV patients ( $P = 0.001$ ). Median survival from presentation was lowest in NVLD (1.7 years) when compared to HBV (2.8 years) and HCV (2.6 years) ( $P < 0.05$ ). In multivariate analysis, independent predictors of survival included Child Turcotte Pugh score, size of dominant lesion, absence of vascular invasion, and management with surgical resection or liver transplantation. Patient age and the etiology of the underlying liver disease were not independent predictors of survival

## CONCLUSION

Patients with NVLD and HCC were less likely to be enrolled in a HCC surveillance program and are less likely to have curative therapies such as liver resection and transplantation after diagnosis with HCC, when compared to patients with Hepatitis B and Hepatitis C.

**Key words:** Hepatitis B; Hepatitis C; Hepatocellular carcinoma; Surveillance; Therapy; Nonalcoholic fatty liver disease; Survival

© The Author(s) 2017. Published by Baishideng Publishing Group Inc. All rights reserved.

**Core tip:** In this prospective study of 1078 patients, we examined the relationship between etiology of liver disease with clinical presentation and outcome, following a diagnosis of hepatocellular carcinoma. Our results are clinically useful and relevant for gastroenterologists worldwide. In our diverse and multi-ethnic cohort, patients diagnosed with hepatocellular carcinoma (HCC), who have a background of non-viral liver disease are: (1) Less likely to be participating in an HCC surveillance program; (2) Have more severe liver disease at diagnosis; (3) Have a greater tumor burden at diagnosis; and (4) Less likely to have curative therapies for HCC like liver transplantation or liver resection.

Mohsen W, Rodov M, Prakoso E, Charlton B, Bowen DG, Koorey DJ, Shackel NA, McCaughan GW, Strasser SI. Patients with non-viral liver disease have a greater tumor burden and less curative treatment options when diagnosed with hepatocellular carcinoma. *World J Gastroenterol* 2017; 23(15): 2763-2770 Available from: URL: <http://www.wjgnet.com/1007-9327/full/v23/i15/2763.htm> DOI: <http://dx.doi.org/10.3748/wjg.v23.i15.2763>

## INTRODUCTION

Hepatocellular carcinoma (HCC) is one of the leading causes of cancer deaths worldwide, with nearly 700000 deaths attributed to HCC each year. While the burden of HCC is highest in Asia and Africa, its

incidence is rising in the developed world, in countries such as the United Kingdom, France, the United States and Australia<sup>[1,2]</sup>. The majority of HCC in both developed and developing countries is attributable to viral hepatitis. Hepatitis B virus (HBV) and hepatitis C virus (HCV) are becoming more prevalent in developed countries, due to migration from high prevalence areas and transmission in past decades from injecting drug use<sup>[1]</sup>. Subjects with HCV and HBV related cirrhosis are at particular risk of HCC. The annual incidence rates of HCC in patients with HCV and HBV are 1%-9% and 0.5%-6% respectively<sup>[3,4]</sup>.

Increasing rates of obesity and diabetes in the developed world have contributed to the rise of nonalcoholic fatty liver disease (NAFLD). Some patients with NAFLD, particularly those with nonalcoholic steatohepatitis (NASH), progress to cirrhosis and subsequently to HCC<sup>[5-8]</sup>. The association between alcoholic cirrhosis and HCC is well established. A recent study showed that alcoholic cirrhosis was the major risk factor in 29% of patients diagnosed with HCC at the Mayo Clinic<sup>[5]</sup>. The mechanisms by which alcoholic liver disease and NAFLD contribute to the development of HCC are thought to be similar<sup>[9,10]</sup>. These are largely dependent on the presence of liver cirrhosis as a prerequisite for the development of HCC<sup>[11,12]</sup>. The annual incidence of HCC among patients with alcoholic and NASH cirrhosis has been reported as 2%-8%<sup>[1,2,11]</sup>.

HCC is associated with a high morbidity and mortality rate, particularly among those with cirrhosis. The five-year survival rate is 14%-18%<sup>[13,14]</sup>. Survival with HCC relates to both the degree of underlying liver impairment and tumor stage at diagnosis<sup>[5]</sup>. Despite limited data from randomized clinical trials<sup>[15]</sup> early detection offers the best chance for curative treatment for patients with HCC<sup>[16-18]</sup>.

HCC risk factors have been clearly established and surveillance of those at risk is recommended. The American Association for the Study of Liver Diseases (AASLD) and the European Association for the Study of the Liver (EASL) recommend an ultrasound of the liver every 6 mo, for patients with cirrhosis due to underlying viral and non-viral liver disease (NVLD)<sup>[10]</sup>. Routine surveillance of patients with HBV and HCV cirrhosis has been well adopted by gastrointestinal subspecialists however screening of patients with non-viral liver cirrhosis, particularly due to alcohol and NASH appears to be less consistent<sup>[16-19]</sup>. The aim of this study was to assess the impact of liver disease etiology on the presenting features and outcomes of HCC.

## MATERIALS AND METHODS

### Patients

A prospective database of all patients with HCC was established in 1998 at the Royal Prince Alfred Hospital in Sydney, Australia. This is the only liver transplant

centre in the state of NSW. This database was censored for this retrospective study in March 2012. Analysis was undertaken of all patients ( $n = 1078$ ) in this database and patients were categorized into three groups, based on the etiology of their liver disease: HBV, HCV or NVLD. The clinical database and this study were approved by the SLHD Ethics Review Committee (RPAH Zone). Informed consent was obtained.

A diagnosis of HBV infection required the presence of hepatitis B surface antigen (HBsAg). Infection with HCV was confirmed with anti-HCV antibodies and/or HCV PCR. Alcoholic liver disease was diagnosed on the basis of a compatible history of sustained heavy alcohol intake greater than 40 g/d coupled with the absence of viral markers and other causes of liver disease. This diagnosis was assisted with a liver biopsy, if one was available. The diagnosis of NAFLD was made following the exclusion of viral hepatitis and other causes of liver disease in a patient with known fatty liver disease or metabolic risk factors such as obesity and diabetes.

### **Liver disease and tumor characterisation**

Cirrhosis was established in patients either by liver biopsy and/or the basis of results of clinical, laboratory and imaging studies. A diagnosis of HCC was based on positive histopathology on liver biopsy, fine needle aspiration or surgical resection and/or dynamic hepatic imaging demonstrating the presence of one or more liver lesions with enhancement on arterial phase and washout on the venous/delayed phase<sup>[20]</sup>. The size and number of lesions and presence of vascular invasion were determined by multidisciplinary review of imaging (CT or MRI) and radiology reports.

### **Inclusion and exclusion criteria**

Inclusion criteria included age greater than 18 years of age and a diagnosis of HCC confirmed on dynamic imaging (as described above) and/or supported by histopathology from a fine needle biopsy or surgical resection. Exclusion criteria included: (1) HBV and HCV co infection; and (2) Age less than 18 years of age.

### **Data source**

Data were extracted from the computerized data based, electronic medical records, and clinic and hospital files. Variables included: patient demographics (age, sex, ethnicity) etiology of underlying liver disease, presence of cirrhosis, alpha-fetoprotein (AFP) level, Child Turcotte Pugh (CTP) score and Model for End Stage Liver Disease (MELD) score at presentation with HCC. MELD and CTP score were calculated based on the collection of blood results including albumin, creatinine, International normalized ratio (INR) and bilirubin. Clinic letters were used to determine if subjects had encephalopathy or ascites. Tumor-related variables included the number of lesions and size of the dominant lesion, extent of disease and the presence or absence of vascular invasion and/or extra hepatic spread. Liver clinic letters and hospital

discharge summaries were used to determine if the patient was diagnosed as a result of screening.

### **Statistical analysis**

Continuous variables were screened for normality using the Kolmogorov-Smirnov and Shapiro-Wilk tests of normality. Non-parametric tests were used to analyse these variables with the Kruskal-Wallis test used to test for overall significance and Mann-Whitney  $U$  Tests used for planned pair wise comparisons. The independent variable was cause of liver disease (HBV, HCV, or NVLD). Cross tabulations of the categorical and ordinal variables (ethnicity, vascular invasion, metastases, CTP score, and size of lesion) broken down by cause of liver disease (HBV, HCV, or NVLD) were produced and  $\chi^2$  tests of independence were performed to establish whether proportions were independent of cause of liver disease. To test for specific differences in proportions between the causes of liver disease for the variables of interest, Z-tests were computed with the Bonferroni correction adjustment used for all pair wise comparisons within a row for the comparison of percentages. Survival analysis was performed using the Kaplan-Meier estimator. The variable used was number of years from first presentation to death (uncensored cases) or last contact (censored cases). Analysis was performed with pair wise comparisons of survival between the different causes of liver disease (HBV, HCV, or NVLD).

## **RESULTS**

### **Etiology of liver disease in patients diagnosed with HCC**

Of the 1078 patients included in the database, 28 patients (2.6%) with incomplete data and 16 patients (1.5%) with HBV and HCV co-infection were excluded. Of the remaining 1034 patients analysed in this study, liver disease was due to HCV in 467 (45%), HBV in 299 (29%) and NVLD in 268 (26%) patients. Alcoholic liver disease contributed to the majority of the NVLD cohort with 144 patients (54%), followed by NAFLD in 85 (32%) (Figure 1). Causes of liver disease in the remainder, included Hereditary Hemochromatosis (7%), Primary Biliary Cirrhosis (3%), Primary Sclerosing Cholangitis (2%), Autoimmune Hepatitis (1%), Alpha-1 antitrypsin deficiency (1%) and Congenital Hepatic Fibrosis (0.4%) (Table 1).

### **Patient characteristics at presentation with HCC**

When diagnosed with HCC, patients with a background of NVLD were older (median 64 years), compared with those with HBV (57 years) or HCV (55 years) ( $P < 0.001$ ). The majority of patients diagnosed with HCC were male but gender did not differ between the three study groups. Patients with NVLD and HCV patients were more likely to be Caucasian, whereas the HBV cohort were predominantly of Asian ethnicity ( $P < 0.001$ ) (Table 2).

**Table 1 Etiology of liver disease *n* (%)**

	HBV	HCV	Non-viral
No patients	467 (29)	299 (45)	268 (26)
Etiology of non-viral liver disease			
Alcoholic liver disease			144 (53.7)
NAFLD			85 (31.7)
Haemochromatosis			18 (6.7)
Primary sclerosing cholangitis			6 (2.3)
Primary biliary cirrhosis			8 (3)
Alpha-1 antitrypsin deficiency			3 (1.1)
Congenital hepatic fibrosis			1 (0.4)
Autoimmune hepatitis			3 (1.1)

HBV: Hepatitis B virus; HCV: Hepatitis C virus; NAFLD: Non alcoholic fatty liver disease.

HCC was more likely to be diagnosed within a screening/surveillance program in patients with HCV (84.1%). Seventy-one percent of patients with HBV or NVLD were participating in a screening program, prior to diagnosis with HCC ( $P < 0.001$ ) (Table 2).

#### Severity of liver disease at presentation

In those newly diagnosed with HCC, patients with NVLD and HCV presented with more severe underlying liver disease, compared to those with HBV. This was demonstrated by MELD scores and CTP classification (Table 3). The median MELD scores of the NVLD and HCV groups were 8.78 (95%CI: 8.1-10.2) and 8.2 (95%CI: 7.6-8.8) respectively. The median MELD for the HBV groups was 6.42 (95%CI: 5.8-7.3). This was statistically significant when comparing the NVLD and HCV groups to the HBV cohort ( $P < 0.001$ ). A higher proportion of patients with HCV (43.4%) and NVLD (45.4%) had hepatic decompensation (CTP B or C) at presentation, compared to those with HBV (18.6%) ( $P < 0.001$ ). Of patients with HCV, 2.6% did not have cirrhosis, whereas 12.8% of those with NVLD and 22.2% of those with HBV did not have cirrhosis ( $P < 0.001$ ).

#### Tumor extent at presentation

Patients with a background of NVLD and HBV had a greater tumor burden at presentation, compared to patients with a background of HCV (Table 4). Size of dominant lesion, proportion with liver involvement over 50% and evidence of macro vascular invasion were all more common in those with NVLD and HBV, whereas patients with HCV were more likely to have lesions under 5 cm. The median AFP was higher in the HBV patients than in those with HCV or NVLD ( $P < 0.001$ ).

#### Primary treatment modalities in patients diagnosed with HCC

Patients with HCC in the setting of NVLD were more likely to receive best supportive care and less likely to receive curative treatments such as resection and transplantation, compared to patients with HCV and

HBV (Table 5). Nearly a third of patients with NVLD were unsuitable for active management at presentation ( $P < 0.02$ ). A greater proportion of patients with HCC on a background of HCV (21.4%) underwent liver transplantation, compared to patients with NVLD (12.3%) and HBV (13.4%) ( $P < 0.002$ ). Twenty-four point four percent of patients with HBV-associated HCC underwent surgical resection as primary management, a significantly higher rate than in those with HCV (8.8%) or NVLD (13.1%) ( $P < 0.001$ ). All three groups were equally as likely to have TACE as primary treatment (39.2%-45.4%). Ablative therapies including percutaneous ethanol injection, radiofrequency ablation and microwave ablation, were more common as primary treatment in HCV-associated HCC ( $P = 0.011$ ).

#### Survival in patients diagnosed with HCC

Overall survival was lowest in patients with NVLD with a median survival of 1.7 years (Figure 2). Overall survival was 2.8 and 2.6 years in HBV and HCV patients respectively ( $P < 0.05$ ). Survival at 1, 2 and 5 years was lower in those with NVLD, compared to HCV and HBV patients ( $P < 0.05$ ). Mortality in all groups was mainly related to tumor progression and/or liver failure.

#### Multivariate analysis for predictors of survival

In multivariate analysis, independent predictors of survival included CTP score, size of dominant lesion, absence of vascular invasion, and management with surgical resection or liver transplantation (Table 6).

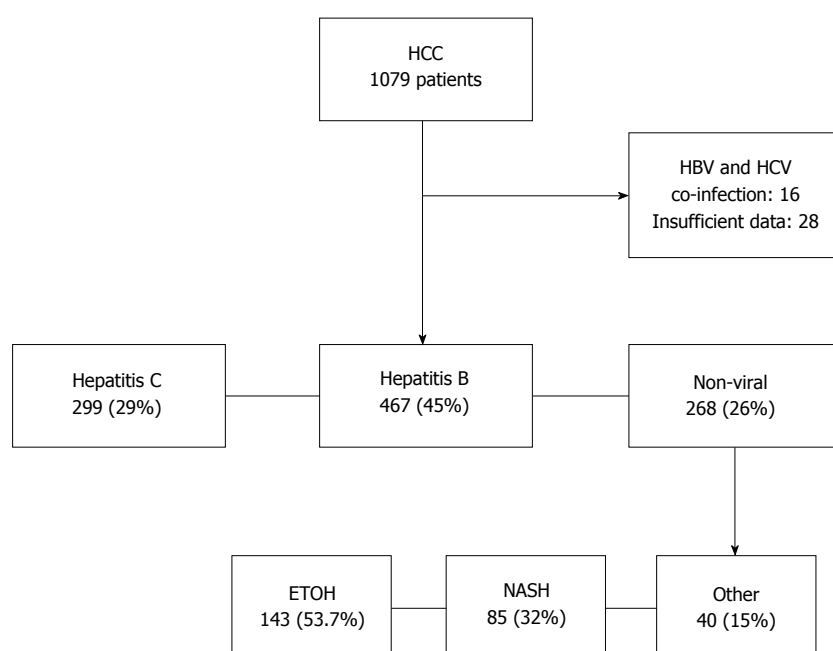
## DISCUSSION

HCC is a disease of rising incidence and mortality among many developed countries. Screening of high-risk candidates for HCC is recommended by international guidelines<sup>[20]</sup> to allow for early detection and effective treatment, thus reducing the burden of this disease. Previous studies show that screening in patients with NVLD occurs less frequently when compared to patients with HBV and HCV<sup>[16,19]</sup>.

Many series reporting on outcomes of HCC are predominantly limited to populations of predominantly hepatitis B (from Asian countries) or hepatitis C (from Japan, North America or Europe). Liver disease due to alcohol often accounts for a smaller proportion of patients in these series<sup>[1,5]</sup>, and often the proportion attributable to NAFLD is not reported, or termed cryptogenic liver disease<sup>[5,11,12]</sup>. The strength of our study population is that includes almost equal proportions of patients with hepatitis B, hepatitis C and NVLD, and includes large numbers of both Asian and Caucasian patients reflecting the multi-ethnic mix of a large Australian city. This unique balance of etiologies allows for an examination of the relationship between presenting features and outcomes according to the cause of underlying liver disease.

It was somewhat reassuring that patients with





**Figure 1 Patient distribution by etiology of liver disease.** HCC: Hepatocellular carcinoma; HBV: Hepatitis B virus; HCV: Hepatitis C virus; NASH: Non alcoholic steatohepatitis.

**Table 2 Patient characteristics according to etiology of liver disease**

	HBV	HCV	Non-viral	P value
Male (%)	84.3	79.2	80.6	< 0.250
Ethnicity (%)				
Caucasian	16.4	73.4	87.3	< 0.001
Asian	75.8	18.2	9.0	< 0.001
Middle Eastern	3.7	7.1	2.2	< 0.001
Polynesian	2.3	0.6	0.0	< 0.001
Aboriginal	0.3	0.2	1.1	< 0.001
African	1.3	0.4	0.4	< 0.001
Median age (95%CI)	57 (55-59)	55 (54-56)	64 (63-65)	< 0.001
Screening program (%)	71	84	71	< 0.001
Median AFP (95%CI)	60 (40-98)	21 (16-28)	9 (6-19)	< 0.001

HBV: Hepatitis B virus; HCV: Hepatitis C virus; AFP: Alpha-fetoprotein.

**Table 3 Severity of liver disease and cirrhosis at hepatocellular carcinoma diagnosis**

	HBV (%)	HCV (%)	Non-viral (%)	P value
Child-Pugh score				
A	58.6	53.9	41.9	< 0.001
B	13.7	29.0	28.3	< 0.001
C	4.9	14.4	17.1	< 0.001
Non-cirrhotic	22.8	2.6	12.8	< 0.001
Median MELD score	6.4	8.2	8.8	< 0.001
Cirrhosis	77.8	97.4	87.2	< 0.001

HCC: Hepatocellular carcinoma; HBV: Hepatitis B virus; HCV: Hepatitis C virus; MELD: Model for end stage liver disease.

HCV cirrhosis were likely to be diagnosed with HCC within a screening program, and perhaps this is why these patients had a lower tumor burden at diagnosis. In Australia, it is estimated that 85% of patients with HCV have been diagnosed as part of a screening program, a much higher percentage than in most other

countries<sup>[21,22]</sup>. It is likely that many of these patients are under specialist care, and those with advanced disease have been identified and entered into screening programs. Despite severe underlying liver disease, many of the patients with HCV-associated HCC were diagnosed within transplant criteria, and over 20%

**Table 4 Tumor characteristics and vascular invasion**

	HBV (%)	HCV (%)	Non-viral (%)	<i>P</i> value
Size of dominant lesion				
< 1 cm	1.3	2.8	2.6	< 0.001
1-3 cm	34.4	46.5	32.1	< 0.001
3-5 cm	22.4	23.8	20.5	< 0.001
> 5 cm	32.0	18.0	34.0	< 0.001
Unknown	10.0	9.2	10.4	< 0.001
Tumor extent > 50%	12.4	4.2	12.5	< 0.001
Vascular invasion	10.4	6.7	12.3	< 0.020

HBV: Hepatitis B virus; HCV: Hepatitis C virus.

**Table 5 Treatment modalities used for patients with hepatocellular carcinoma**

Treatment	Hepatitis B (%)	Hepatitis C (%)	Non-viral (%)	<i>P</i> value
TACE	44.5	45.4	39.2	0.099
Ablation	11.1	18.4	10.8	0.011
Resection	24.4	8.8	13.1	< 0.001
Transplant	13.4	21.4	12.3	0.001
Sorafenib	5	4.1	4.1	0.098
Supportive care	21	20	29	< 0.02

HCC: Hepatocellular carcinoma; TACE: Trans arterial chemo embolisation.

**Table 6 Multivariate analysis for predictors of survival**

Variable	Reference	HR	95%CI for HR	<i>P</i> value
Hepatitis B	Non-viral	0.900	0.674-1.200	0.472
Hepatitis C	Non-viral	1.086	0.841-1.401	0.527
Age at presentation	Years	1.009	1.000-1.018	0.062
Non-cirrhotic	Child Pugh C	0.267	0.165-0.433	< 0.001
Child Pugh A	Child Pugh C	0.403	0.287-0.566	< 0.001
Child Pugh B	Child Pugh C	0.705	0.501-0.992	0.045
Gender	Male	0.978	0.748-1.280	0.874
MELD	MELD score	1.016	0.999-1.033	0.072
Resection	Yes	2.212	1.434-3.413	< 0.001
Dominant lesion < 1 cm	Dominant lesion > 5 cm	0.375	0.156-0.898	0.028
Dominant lesion 1-3 cm	Dominant lesion > 5 cm	0.527	0.394-0.704	< 0.001
Dominant lesion 3-5 cm	Dominant lesion > 5 cm	0.740	0.550-0.995	0.046
Sorafenib	Yes	1.118	0.688-1.817	0.652
TACE	Yes	1.371	0.938-2.004	0.103
Transplant	Yes	8.486	5.185-13.889	< 0.001
Tumor extent < 50%	Tumor extent > 50%	0.690	0.476-1.000	0.050
Vascular invasion	Yes	0.555	0.393-0.784	0.001

MELD: Model for end stage liver disease; TACE: Trans arterial chemo embolisation.

underwent transplantation.

In contrast the diagnosis rates of hepatitis B among migrants is likely to be somewhat lower, and many patients, even if diagnosed, may be considered as “healthy carriers” and not referred for specialist care or entered into routine HCC surveillance programs. These factors may account for the relatively higher rates of advanced tumor presentations, despite less severe liver disease in patients with HBV-associated HCC. Of note, 22% of patients with HBV-associated HCC were non-cirrhotic and probably did not have clinically apparent liver disease. Screening recommendations for patients with HBV include patients without cirrhosis, patients

older than 50, those with a family history of HCC, and those with active hepatitis<sup>[20]</sup>. It seems likely that these screening recommendations are not followed by non-specialists. Furthermore, if patients are identified with HBV cirrhosis or active hepatitis, the introduction of antiviral therapy may significantly reduce the chance of developing HCC in the future<sup>[23,24]</sup>.

Non-alcoholic liver disease and alcoholic liver disease, the main causes of NVLD, are relatively common in the community, and it is likely that many of these patients are not under regular specialist care. Particularly in patients with NAFLD, advanced fibrosis and cirrhosis are under-recognized in primary

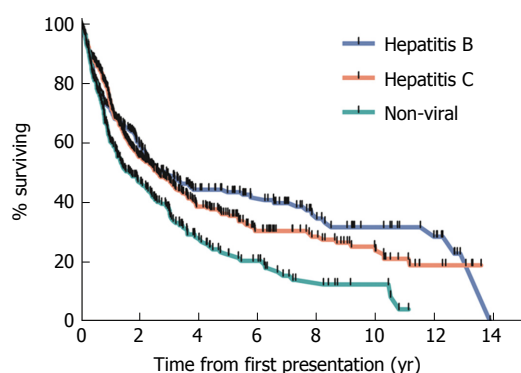


Figure 2 Kaplan meier survival curve ( $P < 0.05$ ).

care. Over reliance on ultrasound and a tendency to dismiss mildly abnormal liver tests as benign fatty liver disease, without the use of non-invasive investigations, such as the Fibroscan result in a missed opportunity to identify cirrhosis and appropriately refer or screen patients at risk. Furthermore 13% of patients with NVLD (predominantly NAFLD patients) did not appear to have cirrhosis at presentation with HCC, although a role for HCC surveillance in this group of patients has not been established.

Another important determinant of outcome may have been the age at diagnosis of HCC. Patients with either HBV, most of whom would have been infected in the perinatal period, or HCV which was mostly acquired in early adulthood from injecting drug use, presented at a younger age than those with NVLD. It is unclear whether age had a modifying effect on disease presentation, however it may have been important in determining appropriate treatment. Interestingly, age was just outside the threshold for statistical significance when analyzed as a predictor of survival, using the multivariate analysis.

In our cohort, univariate analysis showed that survival was poorer in patients with NVLD compared to those with chronic viral hepatitis. Poorer survival in patients with NVLD is likely to be multifactorial, related to more advanced liver disease, a greater tumor burden, and presentation at an older age, compared to patients with viral hepatitis, all of which were demonstrated in this study.

Indeed, in multivariate analysis, etiology was not an independent predictor of survival, but was related to tumor and liver disease severity. Related to poor characteristics at presentation, patients with NVLD and HCC were less likely to be amenable to curative, or even effective palliative management approaches and were more likely to receive best supportive care. Almost a third of patients with NVLD were not suitable for any active management, including Sorafenib. This is compared to 21% of HCV patients who were suitable for liver transplantation.

Our study has several limitations. We did not differentiate between death due to HCC from death due to other causes. Patients with NVLD were older and

were more likely to have comorbidities, in particular cardiovascular disease. It is likely that the majority of deaths were liver-related, when one considers that these patients had more advanced liver disease, more advanced HCC, and were more likely to be managed with supportive therapy from the time of diagnosis.

Another limitation in our study relates to how our subjects came to be diagnosed with HCC. We documented if patients were diagnosed as result of screening by scrutinizing their medical records. If patients were found to have a small asymptomatic lesion, during an imaging procedure performed to evaluate their liver disease, even if not enrolled in a formal screening program, we categorized them in the screened group. This was to distinguish them from patients who presented with larger symptomatic HCC lesions. In our country, as in many others, screening is often not well documented, and may be done on an ad hoc basis rather than in a routine surveillance program.

In conclusion, in a large cohort of patients with HCC, those with NVLD had a greater tumor burden, worse liver function and older age at diagnosis, all resulting in a lower likelihood of receiving curative therapies such as surgical resection or liver transplantation. Importantly, patients with NVLD were more likely to present with symptomatic disease, rather than be diagnosed as a consequence of routine surveillance while asymptomatic. Our results highlight the need for early identification of liver disease in patients at risk of HCC, so that risk stratification and appropriate specialist referral and enrolment within an HCC surveillance program can be undertaken.

## COMMENTS

### Background

Hepatocellular carcinoma (HCC) is one of the leading causes of cancer deaths worldwide. Subjects with chronic Hepatitis B and subjects with cirrhosis from hepatitis C or non viral hepatitis (predominantly alcoholic liver disease and non alcoholic steatohepatitis) are at risk of developing HCC. These subjects should be screened regularly.

### Research frontiers

Effective screening of patients at risk of developing HCC, leads to the detection of HCC at an early stage, when curative therapy is possible.

### Innovations and breakthroughs

Subjects with non viral liver disease are less likely to be screened for HCC. These subjects are more likely to present with a greater burden of HCC, and have less curative treatment options.

### Applications

This article emphasises the importance of: (1) Identifying cirrhosis among subjects with non viral liver disease, by using objective diagnostic tools like fibroscan; and (2) Surveillance of subjects at risk of developing HCC, using six monthly abdomen ultrasounds.

### Peer-review

The study is of interest for researchers in the field. The analysis is well performed, the results are relevant and the paper is well written. Mohsen et al

may consider excluding patients without alcoholic cirrhosis and non alcoholic steatohepatitis from the non viral liver disease cohort.

## REFERENCES

- 1 **Kemp W**, Pianko S, Nguyen S, Bailey MJ, Roberts SK. Survival in hepatocellular carcinoma: impact of screening and etiology of liver disease. *J Gastroenterol Hepatol* 2005; **20**: 873-881 [PMID: 15946134 DOI: 10.1111/j.1440-1746.03844.x]
- 2 **Dhanasekaran R**, Limaye A, Cabrera R. Hepatocellular carcinoma: current trends in worldwide epidemiology, risk factors, diagnosis, and therapeutics. *Hepat Med* 2012; **4**: 19-37 [PMID: 24367230 DOI: 10.2147/HMER.S16316]
- 3 **El-Serag HB**. Epidemiology of viral hepatitis and hepatocellular carcinoma. *Gastroenterology* 2012; **142**: 1264-1273.e1 [PMID: 22537432 DOI: 10.1053/j.gastro.2011.12.061]
- 4 **El-Serag HB**, Davila JA, Petersen NJ, McGlynn KA. The continuing increase in the incidence of hepatocellular carcinoma in the United States: an update. *Ann Intern Med* 2003; **139**: 817-823 [PMID: 14623619 DOI: 10.7326/0003-4819-139-10-200311180-00009]
- 5 **Yang JD**, Harmsen WS, Slettedahl SW, Chaiteerakij R, Enders FT, Therneau TM, Orsini L, Kim WR, Roberts LR. Factors that affect risk for hepatocellular carcinoma and effects of surveillance. *Clin Gastroenterol Hepatol* 2011; **9**: 617-623.e1 [PMID: 21459158 DOI: 10.1016/j.cgh.2011.03.027]
- 6 **Tokushige K**, Hashimoto E, Horie Y, Taniai M, Higuchi S. Hepatocellular carcinoma in Japanese patients with nonalcoholic fatty liver disease, alcoholic liver disease, and chronic liver disease of unknown etiology: report of the nationwide survey. *J Gastroenterol* 2011; **46**: 1230-1237 [PMID: 21748549 DOI: 10.1007/s00535-011-0431-9]
- 7 **Reddy SK**, Steel JL, Chen HW, DeMateo DJ, Cardinal J, Behari J, Humar A, Marsh JW, Geller DA, Tsung A. Outcomes of curative treatment for hepatocellular cancer in nonalcoholic steatohepatitis versus hepatitis C and alcoholic liver disease. *Hepatology* 2012; **55**: 1809-1819 [PMID: 22183968 DOI: 10.1002/hep.25536]
- 8 **Baffy G**, Brunt EM, Caldwell SH. Hepatocellular carcinoma in non-alcoholic fatty liver disease: an emerging menace. *J Hepatol* 2012; **56**: 1384-1391 [PMID: 22326465 DOI: 10.1016/j.jhep.2011.10.027]
- 9 **Stickel F**, Hellerbrand C. Non-alcoholic fatty liver disease as a risk factor for hepatocellular carcinoma: mechanisms and implications. *Gut* 2010; **59**: 1303-1307 [PMID: 20650925 DOI: 10.1136/gut.2009.199661]
- 10 **Neuschwander-Tetri BA**, Caldwell SH. Nonalcoholic steatohepatitis: summary of an AASLD Single Topic Conference. *Hepatology* 2003; **37**: 1202-1219 [PMID: 12717402 DOI: 10.1053/jhep.2003.50193]
- 11 **White DL**, Kanwal F, El-Serag HB. Association between nonalcoholic fatty liver disease and risk for hepatocellular cancer, based on systematic review. *Clin Gastroenterol Hepatol* 2012; **10**: 1342-1359.e2 [PMID: 23041539 DOI: 10.1016/j.cgh.2012.10.001]
- 12 **Hashimoto E**, Yatsuji S, Tobari M, Taniai M, Torii N, Tokushige K, Shiratori K. Hepatocellular carcinoma in patients with nonalcoholic steatohepatitis. *J Gastroenterol* 2009; **44** Suppl 19: 89-95 [PMID: 19148800 DOI: 10.1007/s00535-008-2262-x]
- 13 **Altekruse SF**, McGlynn KA, Dickie LA, Kleiner DE. Hepatocellular carcinoma confirmation, treatment, and survival in surveillance, epidemiology, and end results registries, 1992-2008. *Hepatology* 2012; **55**: 476-482 [PMID: 21953588 DOI: 10.1002/hep.24710]
- 14 **Witjes CD**, Karim-Kos HE, Visser O, van den Akker SA, de Vries E, Ijzermans JN, de Man RA, Coebergh JW, Verhoef C. Hepatocellular carcinoma in a low-endemic area: rising incidence and improved survival. *Eur J Gastroenterol Hepatol* 2012; **24**: 450-457 [PMID: 22273986 DOI: 10.1097/MEG.0b013e32835030ce]
- 15 **Poustchi H**, Farrell GC, Strasser SI, Lee AU, McCaughan GW, George J. Feasibility of conducting a randomized control trial for liver cancer screening: is a randomized controlled trial for liver cancer screening feasible or still needed? *Hepatology* 2011; **54**: 1998-2004 [PMID: 21800340 DOI: 10.1002/hep.24581]
- 16 **Patwardhan V**, Paul S, Corey KE, Mazhar SM, Richter JM, Thiim M, Chung RT. Hepatocellular carcinoma screening rates vary by etiology of cirrhosis and involvement of gastrointestinal subspecialists. *Dig Dis Sci* 2011; **56**: 3316-3322 [PMID: 21805170 DOI: 10.1007/s10620-011-1836-2]
- 17 **Yuen MF**, Cheng CC, Laufer JJ, Lam SK, Ooi CG, Lai CL. Early detection of hepatocellular carcinoma increases the chance of treatment: Hong Kong experience. *Hepatology* 2000; **31**: 330-335 [PMID: 10655254 DOI: 10.1002/hep.510310211]
- 18 **Amarapurkar D**, Han KH, Chan HL, Ueno Y. Application of surveillance programs for hepatocellular carcinoma in the Asia-Pacific Region. *J Gastroenterol Hepatol* 2009; **24**: 955-961 [PMID: 19383082 DOI: 10.1111/j.1440-1746.2009.05805.x]
- 19 **Akahoshi H**, Taura N, Ichikawa T, Miyaaki H, Akiyama M, Miuma S, Ozawa E, Takeshita S, Muraoka T, Matsuzaki T, Ohtani M, Isomoto H, Matsumoto T, Takeshima F, Nakao K. Differences in prognostic factors according to viral status in patients with hepatocellular carcinoma. *Oncol Rep* 2010; **23**: 1317-1323 [PMID: 20372846 DOI: 10.3892/or.00000766]
- 20 **European Association For The Study Of The Liver**; European Organisation For Research And Treatment Of Cancer. EASL-EORTC clinical practice guidelines: management of hepatocellular carcinoma. *J Hepatol* 2012; **56**: 908-943 [PMID: 22424438 DOI: 10.1016/j.jhep.2011.12.001]
- 21 **Sievert W**, Altraif I, Razavi HA, Abdo A, Ahmed EA, Alomair A, Amarapurkar D, Chen CH, Dou X, El Khayat H, Elshazly M, Esmat G, Guan R, Han KH, Koike K, Largen A, McCaughan G, Mogawer S, Monis A, Nawaz A, Piratvisuth T, Sanai FM, Sharara AI, Sibbel S, Sood A, Suh DJ, Wallace C, Young K, Negro F. A systematic review of hepatitis C virus epidemiology in Asia, Australia and Egypt. *Liver Int* 2011; **31** Suppl 2: 61-80 [PMID: 21651703 DOI: 10.1111/j.1478-3231.2011.02540.x]
- 22 **Cornberg M**, Razavi HA, Alberti A, Bernasconi E, Buti M, Cooper C, Dalgard O, Dillion JF, Flisiak R, Fornis X, Frankova S, Goldis A, Goulis I, Halota W, Hunyady B, Lagging M, Largen A, Makara M, Manolakopoulos S, Marcellin P, Marinho RT, Pol S, Poynard T, Puoti M, Sagalova O, Sibbel S, Simon K, Wallace C, Young K, Yurdaydin C, Zuckerman E, Negro F, Zeuzem S. A systematic review of hepatitis C virus epidemiology in Europe, Canada and Israel. *Liver Int* 2011; **31** Suppl 2: 30-60 [PMID: 21651702 DOI: 10.1111/j.1478-3231.2011.02539.x]
- 23 **Robotin MC**, Kansil M, Howard K, George J, Tipper S, Dore GJ, Levy M, Penman AG. Antiviral therapy for hepatitis B-related liver cancer prevention is more cost-effective than cancer screening. *J Hepatol* 2009; **50**: 990-998 [PMID: 19303657 DOI: 10.1016/j.jhep.2008.12.022]
- 24 **Strasser SI**. Managing hepatitis B to prevent liver cancer: recent advances. *Expert Rev Gastroenterol Hepatol* 2014; **8**: 409-415 [PMID: 24580046 DOI: 10.1586/17474124.2014.893823]

P-Reviewer: Makisalo H, Nakajima H, Ocker M, Silva ACS

S-Editor: Ma YJ L-Editor: A E-Editor: Zhang FF







Published by **Baishideng Publishing Group Inc**  
7901 Stoneridge Drive, Suite 501, Pleasanton, CA 94588, USA  
Telephone: +1-925-223-8242  
Fax: +1-925-223-8243  
E-mail: [bpgooffice@wjgnet.com](mailto:bpgooffice@wjgnet.com)  
Help Desk: <http://www.f6publishing.com/helpdesk>  
<http://www.wjgnet.com>



ISSN 1007-9327



9 771007 932045