

Name of Journal: World Journal of Gastroenterology

ESPS Manuscript NO: 19809

Manuscript Type: META-ANALYSIS

Supplementary material

Endoscopic stenting for inoperable malignant biliary obstruction: a systematic review and meta-analysis

Search Strategy

- MEDLINE strategy: ((prostheses and implants) OR SEMS OR ARMS OR prosthesis OR stent OR endoscopy OR endoscopic OR endobiliary OR deobstruction OR biliary drainage OR biliary reobstruction OR PBD OR endoscopic biliary stenting OR EBS OR endoscopic nasobiliary drainage OR enbd OR ercp OR drainage, methods OR endoscopy, methods OR endoscopy, adverse effects OR drainage, adverse effects) AND (klatskin OR hilar cholangiocarcinoma OR HC OR hca OR bile duct cancer OR bile duct neoplasms OR jaundice OR bismuth OR biliary tract neoplasms OR Carcinoma, Hepatocellular OR mbdo OR bile duct) AND random*
- EMBASE strategy: 'prostheses and implants'/exp OR 'prostheses and implants' OR sems OR arms OR 'prosthesis'/exp OR prosthesis OR 'stent'/exp OR stent OR 'endoscopy'/exp OR endoscopy OR endoscopic OR endobiliary OR deobstruction OR 'biliary drainage'/exp OR 'biliary drainage' OR 'biliary reobstruction' OR pbd OR 'endoscopic biliary stenting' OR ebs OR 'endoscopic nasobiliary drainage' OR enbd OR 'ercp'/exp OR ercp OR 'drainage, methods' OR 'endoscopy, methods' OR 'endoscopy, adverse effects' OR 'drainage, adverse effects' AND (klatskin OR 'hilar cholangiocarcinoma'/exp OR 'hilar cholangiocarcinoma' OR hc OR hca OR 'bile duct cancer'/exp OR 'bile duct cancer' OR 'bile duct neoplasms'/exp OR 'bile duct neoplasms' OR 'jaundice'/exp OR jaundice OR 'bismuth'/exp OR bismuth OR 'biliary tract neoplasms'/exp OR 'biliary tract neoplasms' OR 'carcinoma, hepatocellular'/exp OR 'carcinoma, hepatocellular' OR mbdo OR 'bile duct'/exp OR 'bile

duct') AND ([controlled clinical trial]/lim OR [randomized controlled trial]/lim) AND [embase]/lim

- SCOPUS strategy: ALL((prostheses and implants) OR SEMS OR ARMS OR prosthesis OR stent OR endoscopy OR endoscopic OR endobiliary OR deobstruction OR biliary drainage OR biliary reobstruction OR PBD OR endoscopic biliary stenting OR EBS OR endoscopic nasobiliary drainage OR enb) AND (LIMIT-TO(DOCTYPE,"ar")) AND (LIMIT-TO(SUBJAREA,"MEDI"))

Findings

The initial findings were as follows:

MEDLINE findings: 1576 studies, 1484 were excluded by title, non-randomized study, and/or no biliary stents comparison = 92 studies, 79 were excluded by abstract comparison between plastic and metallic stents, leaving 13 full texts selected.

Brazilian Master's and Doctorate's theses and dissertations findings: 42 theses – all were unrelated to the theme and mostly in interventionist cardiology, thus excluded

EMBASE findings: 1294 studies, 1236 were excluded by title, non-randomized study, and/or no biliary stents comparison = 60 studies, 49 were excluded by abstract comparison between plastic and metallic stents, leaving 12 full texts selected.

CINAHL findings: 13 studies, 2 were repeated and excluded, leaving 11; 4 were comparisons between other type stents; 7 was a non-biliary stent comparison study

LILACS and CENTRAL findings: 76 studies, 51 were excluded by title, non-randomized study, and/or no biliary stents comparison, leaving 25 studies that were all excluded by abstract: 13 repetitions; 1 no stent comparison, 2 reviews, 1 non-randomized trial study, and 7 comparisons between plastic stents. One search title didn't reveal an article {Expandable (Strecker-) metal stent and plastic endoprosthesis in distal malign bile duct stenosis - a prospective randomised study - Jung M; Wesner S; Hurst A; Caspary WF. CENTRAL - Registro de ensaios clinicos controlados | ID: coc-CN-00323193}.

SCOPUS findings: 659 studies, all were excluded by title or abstract, non-randomized study, repetition, and/or no biliary stents comparison.

Gray literature findings: 1 study selected – excluded after contacting author (partial results, published afterwards).

Supplementary Table 1 PubMed and EMBASE repetitions: 8 among the studies selected

AUTHOR	PERIODIC	YEAR	EXCLUSION REASON
Elias et al.	Gut	1975	STUDY DO NOT EVALUATE COMPARISON BETWEEN PS AND SEMS IN MALIGNANT BILIARY OBSTRUCTION
Elias et al.	Gastroenterology	1976	STUDY DO NOT EVALUATE COMPARISON BETWEEN PS AND SEMS IN MALIGNANT BILIARY OBSTRUCTION
Matzen et al.	Scand J Gastroenterology	1982	STUDY DO NOT EVALUATE COMPARISON BETWEEN PS AND SEMS IN MALIGNANT BILIARY OBSTRUCTION
Dilawari et al.	Indian J Med Res	1982	PERCUTANEUS INTERVENTION
Leung et al.	Br J Surg	1983	REVIEW ARTICLE
Bornman et al.	Lancet	1986	SURGICAL INTERVENTION
Bornman et al.	Lancet	1987	PERCUTANEUS INTERVENTION
Speer et al.	Lancet	1987	PERCUTANEUS INTERVENTION
Shepherd et al.	Br J Surg	1988	SURGICAL INTERVENTION
Bornman et al.	Hpb Surg	1989	PERCUTANEUS INTERVENTION
Naggar et al.	Liver	1990	REVIEW ARTICLE
Böttger et al.	Langenbecks Arch Chir	1990	PERCUTANEUS INTERVENTION
Huibregtse et al.	Endoscopy	1992	STUDY DO NOT EVALUATE COMPARISON BETWEEN PS AND SEMS IN MALIGNANT BILIARY OBSTRUCTION
Knyrim et al.	Dtsch Med Wochenschr	1992	GERMAN - AFTER TRANSLATION PROVED TO BE THE SAME CASUISTIC OF KNYRIM ET AL 1993 ENDOSCOPY
Glättli et al.	Schweiz Med Wochenschr	1992	PERCUTANEUS INTERVENTION
Wagner et al.	Gastrointestinal Endoscopy	1993	STUDY DO NOT EVALUATE COMPARISON BETWEEN PS AND SEMS IN MALIGNANT BILIARY OBSTRUCTION
Glättli et al.	Hpb Surg	1993	PERCUTANEUS INTERVENTION
Sutton et al.	Lancet	1994	STUDY DO NOT EVALUATE COMPARISON BETWEEN PS AND SEMS IN MALIGNANT BILIARY OBSTRUCTION
Seitz et al.	Endoscopy	1994	STUDY DO NOT EVALUATE COMPARISON BETWEEN PS AND SEMS IN MALIGNANT BILIARY OBSTRUCTION
Hochberger et al.	Bildgebung	1995	REVIEW ARTICLE
Lichtenstein et al.	Surg Clin North Am	1995	COMPARISON BETWEEN PSs
Cardella et al.	J Vasc Interv Radiol	1995	ANIMAL MODEL STUDY
Costamagna et al.	Chir Ital	1995	REVIEW ARTICLE
Lammer et al.	Radiology	1996	PERCUTANEUS INTERVENTION

Homma et al.	J Gastroenterol	1996	STUDY DO NOT EVALUATE COMPARISON BETWEEN PS AND SEMS IN MALIGNANT BILIARY OBSTRUCTION
England et al.	Cardiovasc Intervent Radiol	1996	PERCUTANEUS INTERVENTION
Trautwein et al.	Zentralbl Chir	1996	PERCUTANEUS INTERVENTION
Pedersen et al.	Gastrointestinal Endoscopy	1998	STUDY DO NOT EVALUATE COMPARISON BETWEEN PS AND SEMS IN MALIGNANT BILIARY OBSTRUCTION
Hoepffner et al.	Z Gastroenterol	1998	REVIEW ARTICLE
van Berkel et al.	Endoscopy	1998	STUDY DO NOT EVALUATE COMPARISON BETWEEN PS AND SEMS IN MALIGNANT BILIARY OBSTRUCTION
Wig et al.	J Ass Physicians India	1999	PERCUTANEUS INTERVENTION
Mezawa et al.	Hepatology	2000	PERCUTANEUS INTERVENTION
Seo et al.	Gastrointestinal Endoscopy	2000	STUDY DO NOT EVALUATE COMPARISON BETWEEN PS AND SEMS IN MALIGNANT BILIARY OBSTRUCTION
England et al.	Gut	2000	COMPARISON BETWEEN PSs
Landoni et al.	Acta Gastroenterol Latin Am	2000	COMPARISON BETWEEN PSs
Terruzzi et al.	Gastrointestinal Endoscopy	2000	STUDY DO NOT EVALUATE COMPARISON BETWEEN PS AND SEMS IN MALIGNANT BILIARY OBSTRUCTION
Costamagna et al.	Gastrointestinal Endoscopy	2000	COMPARISON BETWEEN PSs
De Palma et al.	Gastrointestinal Endoscopy	2001	STUDY DO NOT EVALUATE COMPARISON BETWEEN PS AND SEMS IN MALIGNANT BILIARY OBSTRUCTION
Frimberger et al.	Endoscopy	2001	PERCUTANEUS INTERVENTION
Barkun et al.	Gastrointestinal Endoscopy	2001	COMPARISON BETWEEN PSs
Hintze et al.	Gastrointestinal Endoscopy	2001	STUDY DO NOT EVALUATE COMPARISON BETWEEN PS AND SEMS IN MALIGNANT BILIARY OBSTRUCTION
Ahmad et al.	Endoscopy	2002	NOT RCT
Piñol et al.	Radiology	2002	PERCUTANEUS INTERVENTION
Catalano et al.	Gastrointestinal Endoscopy	2002	COMPARISON BETWEEN PSs
Tringali et al.	Endoscopy	2003	COMPARISON BETWEEN PSs
Schilling et al.	Gastrointestinal Endoscopy	2003	COMPARISON BETWEEN PSs
Shah et al.	Gastrointestinal Endoscopy	2003	COMPARISON BETWEEN SEMSs
Kahl et al.	Zentralbl Chir	2003	STUDY DO NOT EVALUATE COMPARISON BETWEEN PS AND SEMS IN MALIGNANT BILIARY OBSTRUCTION
Zhang et al.	Ai Zheng	2004	STUDY DO NOT EVALUATE COMPARISON BETWEEN PS AND SEMS IN MALIGNANT BILIARY OBSTRUCTION
Cheon et al.	Korean J Gastroenterol	2004	STUDY DO NOT EVALUATE COMPARISON BETWEEN PS AND SEMS IN MALIGNANT BILIARY OBSTRUCTION
Isayama et al.	Gut	2004	COMPARISON BETWEEN SEMSs
Giorgio et al.	World J Gastroenterol	2004	STUDY DO NOT EVALUATE COMPARISON BETWEEN PS AND SEMS IN MALIGNANT BILIARY OBSTRUCTION
Prat et al.	Endoscopy	2004	STUDY DO NOT EVALUATE COMPARISON BETWEEN PS AND SEMS IN MALIGNANT BILIARY OBSTRUCTION
van Berkel et al.	Eur J Gastroenterol Hepatol	2004	COMPARISON BETWEEN PSs
Kozarek et al.	Rev Gastroenterol Mex	2005	REVIEW ARTICLE
Sharma et al.	Endoscopy	2005	STUDY DO NOT EVALUATE COMPARISON BETWEEN PS AND SEMS IN MALIGNANT BILIARY OBSTRUCTION
Chan et al.	J Gastrointest Surg	2005	STUDY DO NOT EVALUATE COMPARISON BETWEEN PS AND SEMS IN MALIGNANT BILIARY OBSTRUCTION
Chahal et al.	Curr Opin Gastroenterol	2006	REVIEW ARTICLE
Yoon et al.	Gastrointestinal Endoscopy	2006	STUDY DO NOT EVALUATE COMPARISON BETWEEN PS AND SEMS IN MALIGNANT BILIARY OBSTRUCTION
Bogliolo et al.	G Chir	2006	REVIEW ARTICLE
Moss et al.	Cochrane Database Syst Ver	2006	REVIEW ARTICLE
Reddy et al.	Curr Gastroenterol Rep	2006	REVIEW ARTICLE
Moss et al.	Cochrane Database Syst Ver	2006	REVIEW ARTICLE
Park et al.	Clin Gastroenterol Hepatol	2006	COMPARISON BETWEEN SEMSs
Moss et al.	Eur J Gastroenterol Hepatol	2007	REVIEW ARTICLE
Moparty et al.	Eur J Gastroenterol Hepatol	2007	REVIEW ARTICLE
Homes et al.	Expert Rev Med Devices	2007	REVIEW ARTICLE
Saluja et al.	Clin Gastroenterol Hepatol	2008	PERCUTANEUS INTERVENTION
Artifon et al.	J Clin Gastroenterology	2008	STUDY DO NOT EVALUATE COMPARISON BETWEEN PS AND SEMS IN MALIGNANT BILIARY OBSTRUCTION
Katsinelos et al.	J Clin Gastroenterology	2008	COMPARISON BETWEEN SEMSs
Kahaleh et al.	Clin Gastroenterol Hepatol	2008	STUDY DO NOT EVALUATE COMPARISON BETWEEN PS AND SEMS IN MALIGNANT BILIARY OBSTRUCTION
Makino et al.	Hepatogastroenterology	2008	PERCUTANEUS INTERVENTION
Tsuyuguchi et al.	J Hepatobiliary Panc Surgery	2008	REVIEW ARTICLE
Chen et al.	J Clin Rehab T E Research	2008	NOT RCT
Loew et al.	Gastrointestinal Endoscopy	2009	COMPARISON BETWEEN SEMSs

Yang et al.	Gastrointestinal Endoscopy	2009	COMPARISON BETWEEN SEMSs
Sharma et al.	Dig Dis Sciences	2009	STUDY DO NOT EVALUATE COMPARISON BETWEEN PS AND SEMS IN MALIGNANT BILIARY OBSTRUCTION
Yeung et al.	Int Surg	2009	STUDY DO NOT EVALUATE COMPARISON BETWEEN PS AND SEMS IN MALIGNANT BILIARY OBSTRUCTION
Mukai et al.	J of Gastroenterol and Hepatol	2009	AFTER CONTACTING THE AUTHOR IT PROVED TO BE A PRELIMINARY DATA OF MUKAI 2013 J HEPATOBILIARY PANCREAT
Kullman et al.	Gastrointestinal Endoscopy	2010	COMPARISON BETWEEN SEMSs
Telford et al.	Gastrointestinal Endoscopy	2010	COMPARISON BETWEEN SEMSs
Katsinelos et al.	Acta Gastroenterol Belg	2010	COMPARISON BETWEEN PSs
Rogart et al.	J Clin Gastroenterology	2010	REVIEW ARTICLE
Krokidis et al.	Cardiovasc Intervent Radiol	2010	PERCUTANEUS INTERVENTION
Neal et al.	Surg Endoscopy	2010	PERCUTANEUS INTERVENTION
Saleem et al.	Gastrointestinal Endoscopy	2011	COMPARISON BETWEEN SEMSs
Krokidis et al.	Cardiovasc Intervent Radiol	2011	PERCUTANEUS INTERVENTION
Song et al.	Gastrointestinal Endoscopy	2011	COMPARISON BETWEEN SEMSs
Hu et al.	Gastrointestinal Endoscopy	2011	NOT RCT
Zhou et al.	Hepatobiliary Pancreat Dis Int	2012	STUDY DO NOT EVALUATE COMPARISON BETWEEN PS AND SEMS IN MALIGNANT BILIARY OBSTRUCTION
Khan et al.	Gut	2012	REVIEW ARTICLE
Srinivasan et al.	Gastrointest Endosc Clin N Am	2012	REVIEW ARTICLE
Zhu et al.	J Hepatology	2012	REVIEW ARTICLE
Cheon et al.	Gastrointestinal Endoscopy	2012	COMPARISON BETWEEN PSs
Ho et al.	Korean J Radiology	2012	REVIEW ARTICLE
Choi et al.	Clinical Endoscopy	2012	NOT RCT
Barkay et al.	J Clin Gastroenterology	2013	COMPARISON BETWEEN PSs
Isayama et al.	Dig Endoscopy	2013	COMPARISON BETWEEN SEMSs
Itoi et al.	Dig Endoscopy	2013	REVIEW ARTICLE
Lee et al.	Dig Endoscopy	2013	NOT RCT
Ung et al.	Scand J Gastroenterology	2013	COMPARISON BETWEEN SEMSs
Almadi et al.	Clin Gastroenterol Hepatol	2013	REVIEW ARTICLE
Wagh et al.	Diagn Ther Endoscopy	2013	COMPARISON BETWEEN PSs
Wagh et al.	Diagn Ther Endoscopy	2013	COMPARISON BETWEEN PSs
Wang et al.	Acad J of Sec Military Med Univ	2013	AFTER TRANSLATION PROVED TO NE A NON RCT STUDY
Hu et al.	Endoscopy	2014	COMPARISON BETWEEN SEMSs
Walter et al.	Gastroenterology	2014	SAME CASUISTICS FROM WALTER ET AL 2014 GASTROINTESTINAL ENDOSCOPY
Kawakubo et al.	J HBP Sciences	2015	NOT RCT

Supplementary Table 2 Outcomes of each study with the type of stent used (in parentheses are the number of stents used in each endoscopic retrograde cholangiopancreatography

AUTHOR	YEAR	PATIENTS	P - PROBLEM	I - INTERVENTION	C - CONTROL	O - OUTCOMES
DAVIDS	1992	105	Inoperable	MBDO 8-10 mm wallstent (1)	10 Fr PS (1)	Overall survival, stent patency period, complication and reintervention
WAGNER	1993	20		MBPO 10mm wallstent em 70% - 30% strecker stent 7mm (1)	11.5 Fr or 14 Fr PS (1)	Complication, hospital stay, costs, stent occlusion and reintervention
KNYRIM	1993	62		MBDO 8 mm SEMS or strecker stent (1 or 2)	14 Fr PS (1 or 2)	Complication, hospital stay, costs, stent occlusion, reintervention
PRAT	1998	105*		MBDO SEMS (1)	11,5 Fr PS (1)	Overall survival, succesful drainage, hospital stay, stent occlusion, reintervention, stent patency and costs
KAASSIS	2003	118		MBDO 10mm wallstent (1)	10 Fr Tannenbaum PS (1)	Overall survival, stent patency period, complication, hospital stay, reintervention, costs and stent occlusion
KATSINELOS	2006	47		MBDO 10 mm SEMS (1)	10 Fr Tannenbaum PS (1)	Overall survival, stent patency period, complication, reintervention, costs and stent occlusion
SODERLUND	2006	100		MBDO cSEMS (1)	10 Fr PS (1)	Overall survival, stent patency period, complication, reintervention, costs and stent occlusion
BERNON	2011	22		MBDO CWS Permalum 10 mm (1)	10 Fr DLS (1)	Overall survival, hospital stay, stent occlusion
ISAYAMA	2011	120		MBDO SEMS (1)	10 Fr PS (1)	Overall survival, stent patency period, complication, reintervention and stent occlusion
SANGCHAN	2012	108		MBPO 10mm SEMS (1)	7 or 10-Fr Amsterdam-type (1)	Overall survival, stent occlusion, complication, succesful drainage and stent patency
MOSES	2013	85		MBDO 10mm uSEMS (1 or 2)	7-Fr FLEXIMA (1 or 2)	Overall survival, stent patency period, complication and stent occlusion
MUKAI	2013	60		MBPO pcSEMS (Wallstent) (1)	10 Fr PS (1)	Overall survival, stent patency period, complication, reintervention, costs and stent occlusion
WALTER	2014	240*		MBDO 10 mm pc or uSEMS (Wallstent) (1)	10 Fr PU or PE (1)	Stent patency period, occlusion and costs

* not all patients were included in the meta-analysis

Supplementary Table 3 Distribution of usable outcomes between the studies is shown below

AUTHOR	YEAR	EVALUATED STENT DYSFUNCTION?	EVALUATED STENT PATENCY?	EVALUATED OVERALL COSTS?	EVALUATED REINTERVENTION?	EVALUATED SURVIVAL TIME?	EVALUATED COMPLICATION?
DAVIDS	1992	YES	YES	NO	YES	YES	YES
WAGNER	1993	YES	NO	YES	YES	NO	YES
KNYRIM	1993	YES	NO	YES	YES	NO	YES
PRAT	1998	YES	YES	YES	YES	YES	NO
KAASSIS	2003	YES	YES*	YES	YES	YES	YES
KATSINELOS	2006	YES	YES	YES	YES	YES	YES
SODERLUND	2006	YES	YES	YES	YES	YES	YES
BERNON	2011	YES	NO	NO	NO	YES	NO
ISAYAMA	2011	YES	YES	NO	YES	YES	YES
SANGCHAN	2012	YES	YES	NO	NO	YES	YES
MOSES	2013	YES	YES	NO	NO	YES	YES
MUKAI	2013	YES	YES	YES	YES	YES	YES
WALTER	2014	YES	YES	YES	YES*	YES*	YES

* not enough data to meta-analysis

Supplementary Table 4 Individual results of the studies included

AUTHOR YEAR		DAVIDS 1992	WAGNER 1993	KNYRIM 1993	PRAT 1998	KAASSIS 2003	KATSINELOS 2006	SODERLUND 2006
JADAD		3	2	3	1	1	3	1
MEAN FOLLOW UP #		18M	6M	5M	7M	12M	12M	10M
PATIENTS		105	20	62	67	118	47	100
STENT DYSFUNCTION	SEMS	16/49	2/10	6/31	6/34	11/59	7/23	12/49
	PS	30/56	5/10	13/31	24/33	22/59	16/24	28/51
PATENCY TIME	SEMS	273	N.A.	N.A.	4,8M	N.A.	255 (30-558)	3,6M
	PS	126	N.A.	N.A.	3,2M	5,5M	123.5 (90-144)	1,8M
OVERALL COSTS	SEMS	N.A.	DM 4992,4	DM 4000 (943)	\$ 4643 (4207-5079)	€ 71278.9/59	€ 30100 (1309)/23	€ 46060/49
	PS	N.A.	DM 6867,52	DM 6000 (1500)	\$ 5547 (4082-7013)	€ 71791.5/59	€ 17700 (738)/24	€ 48610/51
REINTERVENTION	SEMS	15/49	0,4 (0,5)	0,8 (0,4)	1,2 (0,4)	6/59	0,7 (1,18)	8/49
	PS	46/56	2,4 (2,6)	1,5 (0,4)	1,7 (1,3)	25/59	1,46 (1,5)	20/51
OVERALL SURVIVAL	SEMS	175	N.A.	N.A.	4,5M	5,1M	272 (30-873)	5,3M
	PS	147	N.A.	N.A.	4,8M	3,3M	207 (90-571)	3,9M
COMPLICATION	SEMS	6/49	1/10	4/31	N.A.	4/59	0/23	2/49
	PS	6/56	2/10	10/31	N.A.	1/59	4/24	2/51

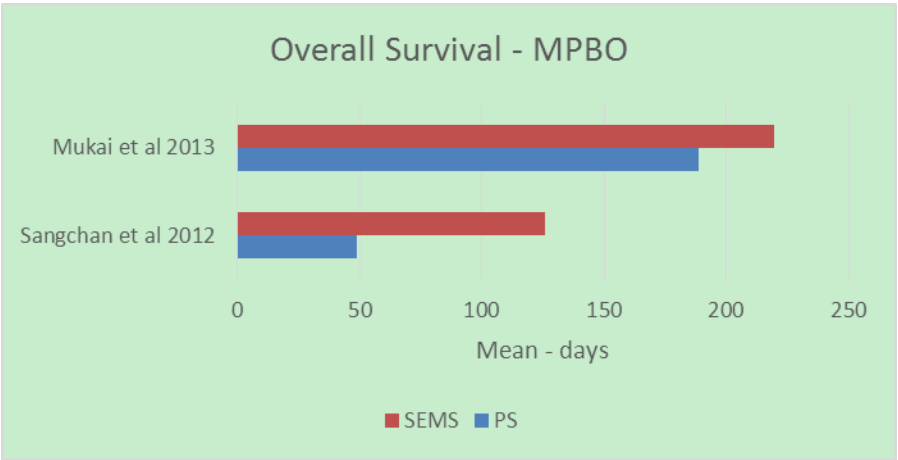
N.A. - Not Available

*When not mentioned the mean follow up time was supposed through the outcomes measures

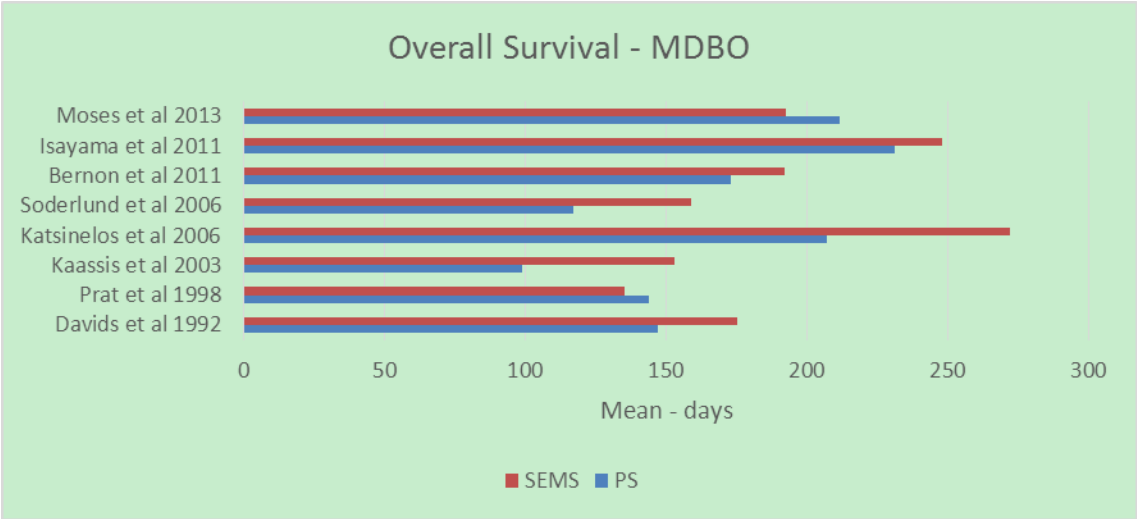
AUTHOR YEAR		BERNON 2011	ISAYAMA 2011	SANGCHAN 2012	MOSES 2013	MUKAI 2013	WALTER 2014
JADAD		1	3	1	1	2	3
MEAN FOLLOW UP #		6M	6M	36M	24M	6M	12M
PATIENTS		22	120	108	85	60	219
STENT DYSFUNCTION	SEMS	2/10	18/60	5/54	10/42	12/30	22/146
	PS	6/12	32/60	9/54	14/43	21/30	31/73
PATENCY TIME	SEMS	N.A.	285 (2-536)	103	385,3 (+/-52,5)	359	288x75+299x71/75+71
	PS	N.A.	202 (0-429)	35	153,3 (+/-19,8)	112	172
OVERALL COSTS	SEMS	N.A.	N.A.	N.A.	N.A.	¥ 1,121,080 (774,580-3,753,300)	€ 6.437
	PS	N.A.	N.A.	N.A.	N.A.	¥ 2,154,190 (365,980-4,422,180)	€ 6.906
REINTERVENTION	SEMS	N.A.	12/60	N.A.	N.A.	12/30	0,24 and 0,25
	PS	N.A.	33/60	N.A.	N.A.	21/30	0,66
OVERALL SURVIVAL	SEMS	192	248	126 (42-290)	192,3 (+/-23,4)	219,5 (44-1134)	N.A.
	PS	173	231	49 (21-97)	211,5 (+/-28)	188,5 (31-818)	N.A.
COMPLICATION	SEMS	N.A.	11/60	14/54	5/42	1/30	28/146
	PS	N.A.	4/60	22/54	11/43	1/30	15/73

N.A. - Not Available

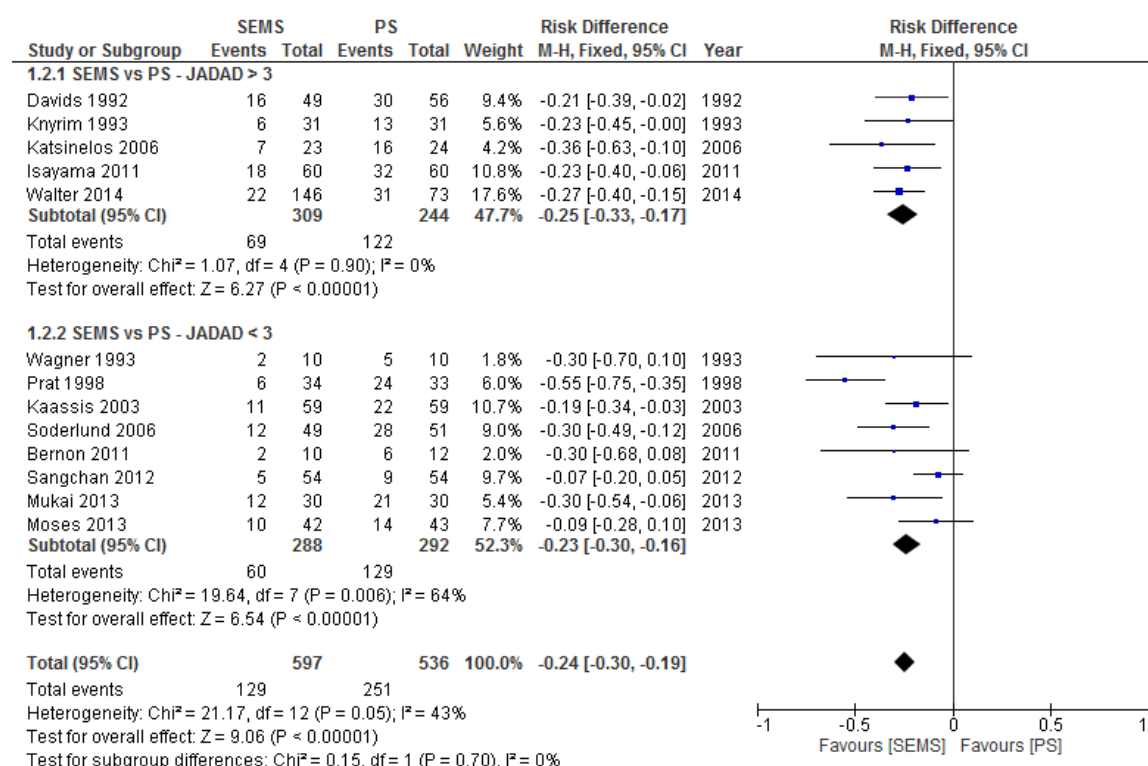
*When not mentioned the mean follow up time was supposed through the outcomes measures



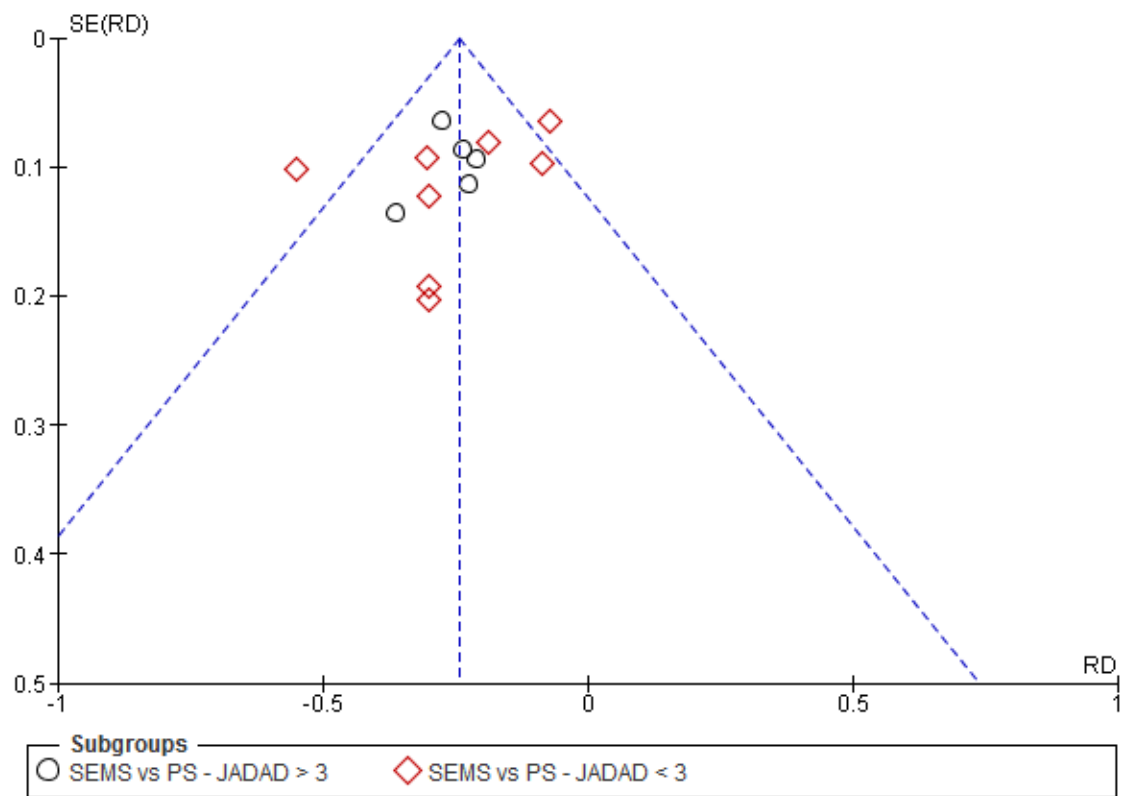
Supplementary Figure 1 Overall survival MPBO for each study.



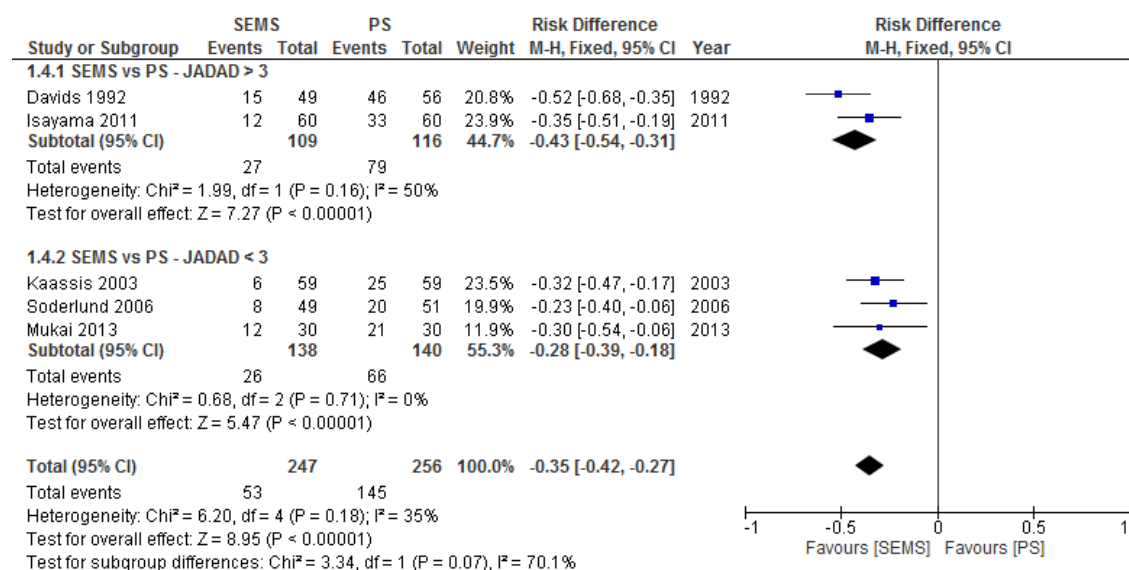
Supplementary Figure 2 Overall survival MDBO for each study.



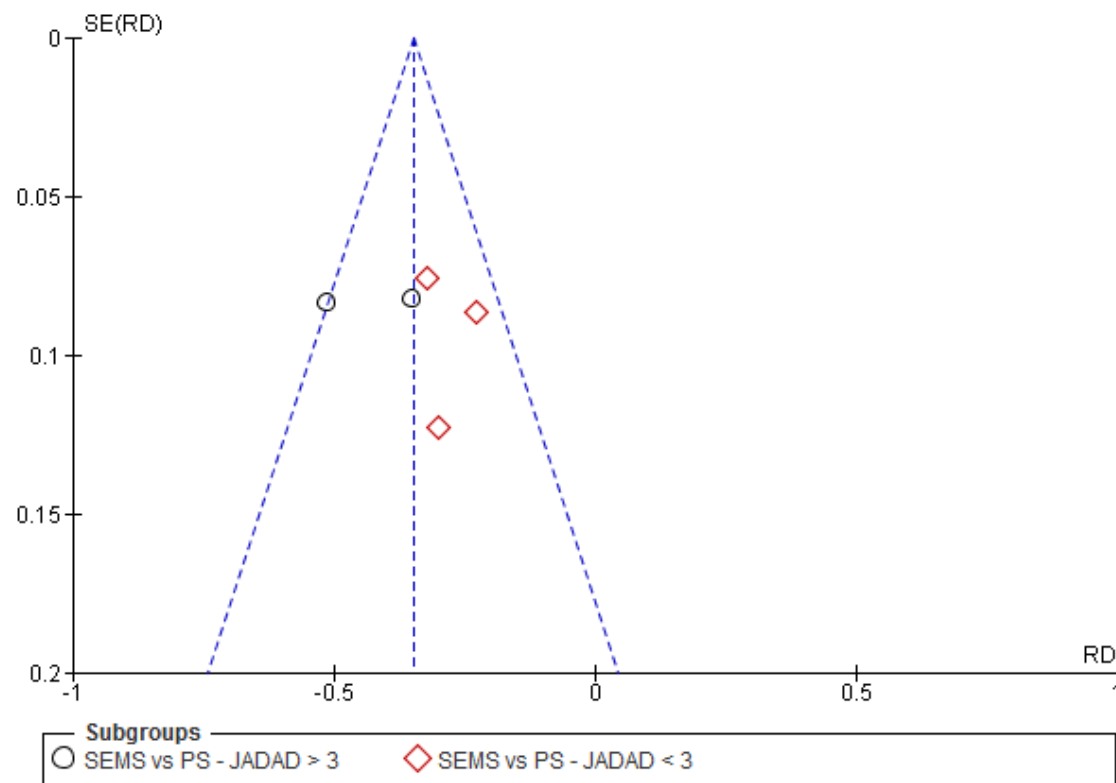
Supplementary Figure 3 Forest plot - stent dysfunction (JADAD).



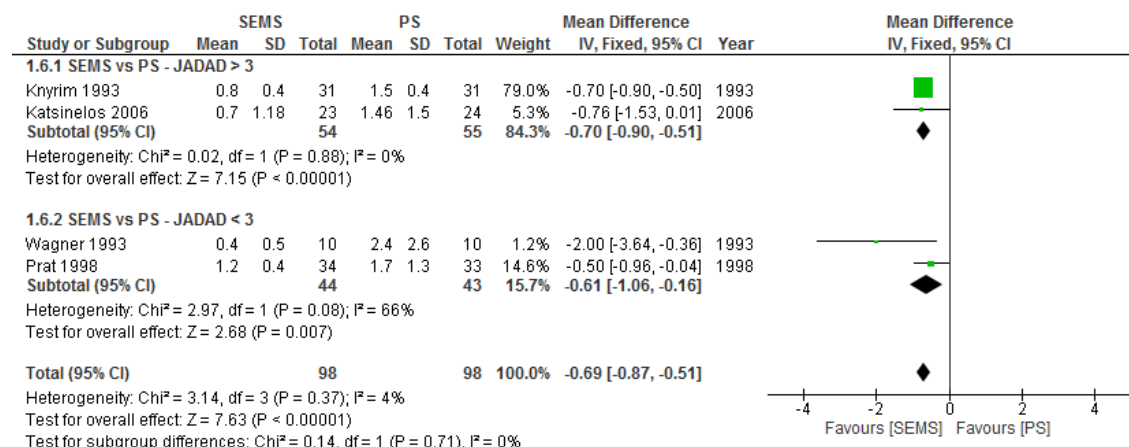
Supplementary Figure 4 Funnel plot - stent dysfunction (JADAD).



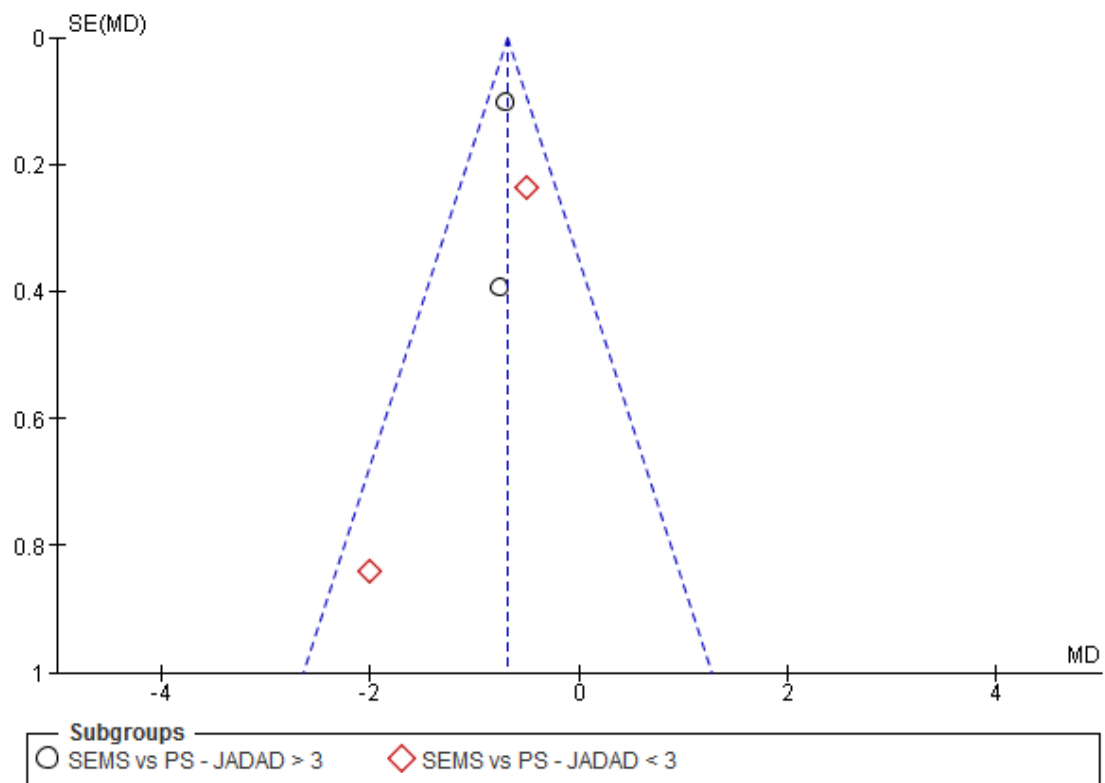
Supplementary Figure 5 Forest plot - reintervention (dichotomic) – JADAD.



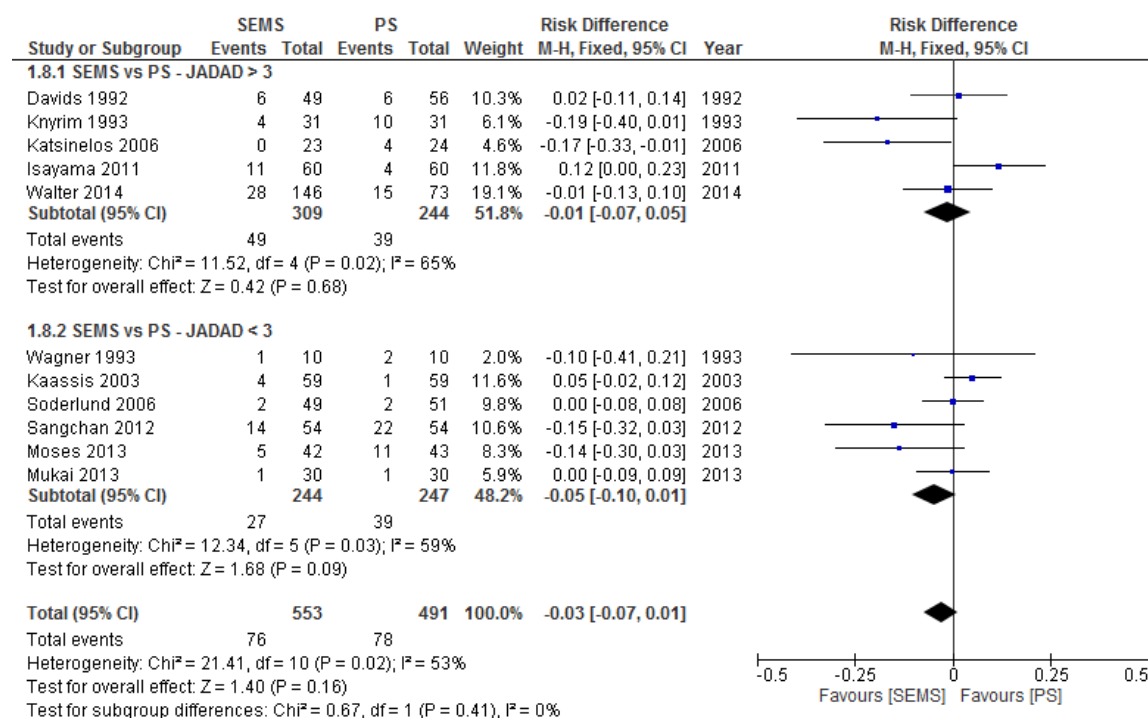
Supplementary Figure 6 Funnel plot - reintervention (dichotomic) - JADAD.



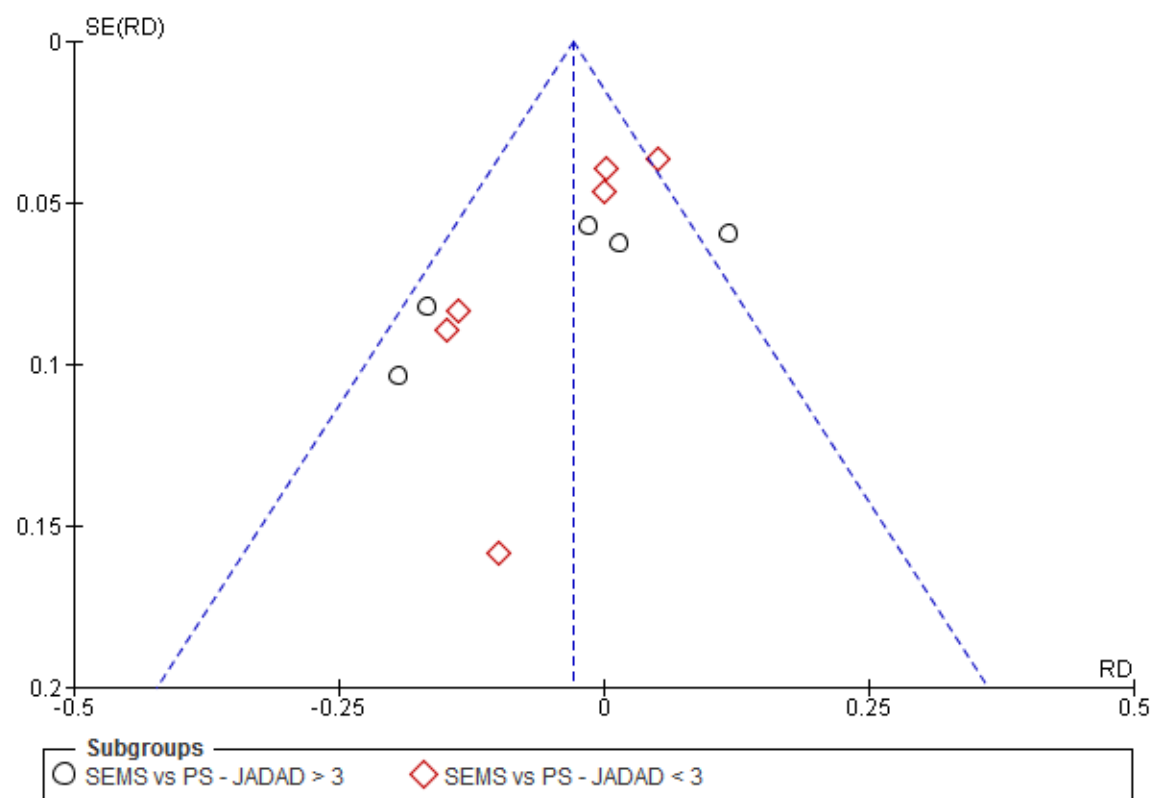
Supplementary Figure 7 Forest plot - reintervention (continuous) – JADAD.



Supplementary Figure 8 Funnel plot - reintervention (continuous) - JADAD.



Supplementary Figure 9 Forest plot – complication (JADAD).



Supplementary Figure 10 Funnel plot - complication (JADAD).