

World Journal of *Transplantation*

Quarterly Volume 14 Number 1 March 18, 2024



EDITORIAL

Lindner C, Riquelme R, San Martín R, Quezada F, Valenzuela J, Maureira JP, Einersen M. Improving the radiological diagnosis of hepatic artery thrombosis after liver transplantation: Current approaches and future challenges. *World J Transplant* 2024; 14(1): 88938 [DOI: [10.5500/wjt.v14.i1.88938](https://doi.org/10.5500/wjt.v14.i1.88938)]

Gonzalez FM, Cohens FG. Predicting outcomes after kidney transplantation: Can Pareto's rules help us to do so? *World J Transplant* 2024; 14(1): 90149 [DOI: [10.5500/wjt.v14.i1.90149](https://doi.org/10.5500/wjt.v14.i1.90149)]

REVIEW

Khalil MAM, Sadagah NM, Tan J, Syed FO, Chong VH, Al-Qurashi SH. Pros and cons of live kidney donation in prediabetics: A critical review and way forward. *World J Transplant* 2024; 14(1): 89822 [DOI: [10.5500/wjt.v14.i1.89822](https://doi.org/10.5500/wjt.v14.i1.89822)]

MINIREVIEWS

Maqbool S, Baloch MF, Khan MAK, Khalid A, Naimat K. Autologous hematopoietic stem cell transplantation conditioning regimens and chimeric antigen receptor T cell therapy in various diseases. *World J Transplant* 2024; 14(1): 87532 [DOI: [10.5500/wjt.v14.i1.87532](https://doi.org/10.5500/wjt.v14.i1.87532)]

Karageorgos FF, Neiros S, Karakasi KE, Vasileiadou S, Katsanos G, Antoniadis N, Tsoulfas G. Artificial kidney: Challenges and opportunities. *World J Transplant* 2024; 14(1): 89025 [DOI: [10.5500/wjt.v14.i1.89025](https://doi.org/10.5500/wjt.v14.i1.89025)]

Kosuta I, Kelava T, Ostojic A, Sesa V, Mrzljak A, Lalic H. Immunology demystified: A guide for transplant hepatologists. *World J Transplant* 2024; 14(1): 89772 [DOI: [10.5500/wjt.v14.i1.89772](https://doi.org/10.5500/wjt.v14.i1.89772)]

Ranawaka R, Dayasiri K, Sandamali E, Gamage M. Management strategies for common viral infections in pediatric renal transplant recipients. *World J Transplant* 2024; 14(1): 89978 [DOI: [10.5500/wjt.v14.i1.89978](https://doi.org/10.5500/wjt.v14.i1.89978)]

Salvadori M, Rosso G. Update on the reciprocal interference between immunosuppressive therapy and gut microbiota after kidney transplantation. *World J Transplant* 2024; 14(1): 90194 [DOI: [10.5500/wjt.v14.i1.90194](https://doi.org/10.5500/wjt.v14.i1.90194)]

Mubarak M, Raza A, Rashid R, Sapna F, Shakeel S. Thrombotic microangiopathy after kidney transplantation: Expanding etiologic and pathogenetic spectra. *World J Transplant* 2024; 14(1): 90277 [DOI: [10.5500/wjt.v14.i1.90277](https://doi.org/10.5500/wjt.v14.i1.90277)]

ORIGINAL ARTICLE

Retrospective Cohort Study

Isa HM, Alkharsi FA, Khamis JK, Hasan SA, Naser ZA, Mohamed ZN, Mohamed AM, Altamimi SA. Pediatric and adult liver transplantation in Bahrain: The experiences in a country with no available liver transplant facilities. *World J Transplant* 2024; 14(1): 87752 [DOI: [10.5500/wjt.v14.i1.87752](https://doi.org/10.5500/wjt.v14.i1.87752)]

Utz Melere M, Sanha V, Farina M, da Silva CS, Nader L, Trein C, Lucchese AM, Ferreira C, Kalil AN, Feier FH. Primary liver transplantation vs transplant after Kasai portoenterostomy in children with biliary atresia: A retrospective Brazilian single-center cohort. *World J Transplant* 2024; 14(1): 88734 [DOI: [10.5500/wjt.v14.i1.88734](https://doi.org/10.5500/wjt.v14.i1.88734)]

Retrospective Study

Andacoglu OM, Dennahy IS, Mountz NC, Wilschrey L, Oezcelik A. Impact of sex on the outcomes of deceased donor liver transplantation. *World J Transplant* 2024; 14(1): 88133 [DOI: [10.5500/wjt.v14.i1.88133](https://doi.org/10.5500/wjt.v14.i1.88133)]

Custodio G, Massutti AM, Caramori A, Pereira TG, Dalazen A, Scheidt G, Thomazini L, Leitão CB, Rech TH. Association of donor hepatectomy time with liver transplantation outcomes: A multicenter retrospective study. *World J Transplant* 2024; 14(1): 89702 [DOI: [10.5500/wjt.v14.i1.89702](https://doi.org/10.5500/wjt.v14.i1.89702)]

Observational Study

Pahari H, Raj A, Sawant A, Ahire DS, Rathod R, Rath C, Sankalecha T, Palnitkar S, Raut V. Liver transplantation for hepatocellular carcinoma in India: Are we ready for 2040? *World J Transplant* 2024; 14(1): 88833 [DOI: [10.5500/wjt.v14.i1.88833](https://doi.org/10.5500/wjt.v14.i1.88833)]

Jesrani AK, Faiq SM, Rashid R, Kalwar TA, Mohsin R, Aziz T, Khan NA, Mubarak M. Comparison of resistive index and shear-wave elastography in the evaluation of chronic kidney allograft dysfunction. *World J Transplant* 2024; 14(1): 89255 [DOI: [10.5500/wjt.v14.i1.89255](https://doi.org/10.5500/wjt.v14.i1.89255)]

SYSTEMATIC REVIEWS

Chongo G, Soldera J. Use of machine learning models for the prognostication of liver transplantation: A systematic review. *World J Transplant* 2024; 14(1): 88891 [DOI: [10.5500/wjt.v14.i1.88891](https://doi.org/10.5500/wjt.v14.i1.88891)]

Agosti E, Zeppieri M, Pagnoni A, Fontanella MM, Fiorindi A, Ius T, Panciani PP. Current status and future perspectives on stem cell transplantation for spinal cord injury. *World J Transplant* 2024; 14(1): 89674 [DOI: [10.5500/wjt.v14.i1.89674](https://doi.org/10.5500/wjt.v14.i1.89674)]

CASE REPORT

Sánchez Pérez B, Pérez Reyes M, Aranda Narvaez J, Santoyo Villalba J, Perez Daga JA, Sanchez-Gonzalez C, Santoyo-Santoyo J. New therapeutic strategy with extracorporeal membrane oxygenation for refractory hepatopulmonary syndrome after liver transplant: A case report. *World J Transplant* 2024; 14(1): 89223 [DOI: [10.5500/wjt.v14.i1.89223](https://doi.org/10.5500/wjt.v14.i1.89223)]

ABOUT COVER

Editor-in-Chief of *World Journal of Transplantation*, Maurizio Salvadori, MD, Professor, Renal Unit, Department of Transplantation, University of Florence, Florence 50139, Italy. maurizio.salvadori1@gmail.com

AIMS AND SCOPE

The primary aim of *World Journal of Transplantation* (WJT, *World J Transplant*) is to provide scholars and readers from various fields of transplantation with a platform to publish high-quality basic and clinical research articles and communicate their research findings online.

WJT mainly publishes articles reporting research results obtained in the field of transplantation and covering a wide range of topics including bone transplantation, brain tissue transplantation, corneal transplantation, descemet stripping endothelial keratoplasty, fetal tissue transplantation, heart transplantation, kidney transplantation, liver transplantation, lung transplantation, pancreas transplantation, skin transplantation, etc.

INDEXING/ABSTRACTING

The WJT is now abstracted and indexed in PubMed, PubMed Central, Scopus, Reference Citation Analysis, China Science and Technology Journal Database, and Superstar Journals Database. The WJT's CiteScore for 2022 is 2.8 and Scopus CiteScore rank 2022: Transplantation is 23/51.

RESPONSIBLE EDITORS FOR THIS ISSUE

Production Editor: Yan-Liang Zhang; Production Department Director: Xu Guo; Editorial Office Director: Jia-Ping Yan.

NAME OF JOURNAL

World Journal of Transplantation

ISSN

ISSN 2220-3230 (online)

LAUNCH DATE

December 24, 2011

FREQUENCY

Quarterly

EDITORS-IN-CHIEF

Maurizio Salvadori, Sami Akbulut, Vassilios Papalois, Atul C Mehta

EDITORIAL BOARD MEMBERS

<https://www.wjnet.com/2220-3230/editorialboard.htm>

PUBLICATION DATE

March 18, 2024

COPYRIGHT

© 2024 Baishideng Publishing Group Inc

INSTRUCTIONS TO AUTHORS

<https://www.wjnet.com/bpg/gerinfo/204>

GUIDELINES FOR ETHICS DOCUMENTS

<https://www.wjnet.com/bpg/GerInfo/287>

GUIDELINES FOR NON-NATIVE SPEAKERS OF ENGLISH

<https://www.wjnet.com/bpg/gerinfo/240>

PUBLICATION ETHICS

<https://www.wjnet.com/bpg/GerInfo/288>

PUBLICATION MISCONDUCT

<https://www.wjnet.com/bpg/gerinfo/208>

ARTICLE PROCESSING CHARGE

<https://www.wjnet.com/bpg/gerinfo/242>

STEPS FOR SUBMITTING MANUSCRIPTS

<https://www.wjnet.com/bpg/GerInfo/239>

ONLINE SUBMISSION

<https://www.f6publishing.com>



Retrospective Study

Impact of sex on the outcomes of deceased donor liver transplantation

Oya M Andacoglu, Isabel S Dennahy, Nicole C Mountz, Luisa Wilschrey, Arzu Oezcelik

Specialty type: Transplantation

Provenance and peer review:

Unsolicited article; Externally peer reviewed.

Peer-review model: Single blind

Peer-review report's scientific quality classification

Grade A (Excellent): 0

Grade B (Very good): B

Grade C (Good): 0

Grade D (Fair): 0

Grade E (Poor): 0

P-Reviewer: Bredt LC, Brazil

Received: October 3, 2023

Peer-review started: October 3, 2023

First decision: October 17, 2023

Revised: November 1, 2023

Accepted: December 11, 2023

Article in press: December 11, 2023

Published online: March 18, 2024



Oya M Andacoglu, Division of Transplantation and Advanced Hepatobiliary Surgery, University of Utah, Salt Lake City, UT 84112, United States

Oya M Andacoglu, Luisa Wilschrey, Arzu Oezcelik, Department of Surgery, University of Essen, Essen D-45122, Germany

Isabel S Dennahy, Department of Surgery, The University of Oklahoma Health Sciences Center, Oklahoma City, OK 73117, United States

Nicole C Mountz, Department of Surgery, University of Oklahoma College of Medicine, Oklahoma City, OK 73117, United States

Corresponding author: Oya M Andacoglu, MD, Assistant Professor, Doctor, Surgeon, Division of Transplantation and Advanced Hepatobiliary Surgery, University of Utah, 30 N Mario Capecchi Drive, Salt Lake City, UT 84112, United States. dr.oyaandacoglu@gmail.com

Abstract

BACKGROUND

Data examining the impact of sex on liver transplant (LT) outcomes are limited. It is clear that further research into sex-related differences in transplant patients is necessary to identify areas for improvement. Elucidation of these differences may help to identify specific areas of focus to improve on the organ matching process, as well as the peri- and post-operative care of these patients.

AIM

To utilize data from a high-volume Eurotransplant center to compare characteristics of male and female patients undergoing liver transplant and assess association between sex-specific variables with short- and long-term post-transplant outcomes.

METHODS

A retrospective review of the University of Essen's transplant database was performed with collection of baseline patient characteristics, transplant-related data, and short-term outcomes. Comparisons of these data were made with Shapiro-Wilk, Mann-Whitney U , χ^2 and Bonferroni tests applied where appropriate. A P value of < 0.05 was accepted as statistically significant.

RESULTS

Of the total 779 LT recipients, 261 (33.5%) were female. Female patients suffered higher incidences of acute liver failure and lower incidences of alcohol-related or viremic liver disease ($P = 0.001$). Female patients were more likely to have received an organ from a female donor with a higher donor risk index score, and as a high urgency offer (all $P < 0.05$). Baseline characteristics of male and female recipients were also significantly different. In multivariate hazard regression analysis, recipient lab-Model for End-Stage Liver Disease score and donor cause of death were associated with long-term outcomes in females. Pre-operative diagnosis of hepatocellular carcinoma, age at time of listing, duration of surgery, and units transfused during surgery, were associated with long-term outcomes in males. Severity of complications was associated with long-term outcomes in both groups. Overall survival was similar in both males and females; however, when stratified by age, females < 50 years of age had the best survival.

CONCLUSION

Female and male LT recipients have different baseline and transplant-related characteristics, with sex-specific variables which are associated with long-term outcomes. Female recipients < 50 years of age demonstrated the best long-term outcomes. Pre- and post-transplant practices should be individualized based on sex-specific variables to optimize long-term outcomes.

Key Words: Liver transplant; Outcomes; Survival; Peri- and post-operative care

©The Author(s) 2024. Published by Baishideng Publishing Group Inc. All rights reserved.

Core Tip: Within this retrospective review, we evaluated baseline and transplant-related features of both male and female liver transplant recipients. Our results identify several sex-specific variables that affect long-term outcomes of liver transplantation, including statistically significant survival outcomes seen in females under the age of 50.

Citation: Andacoglu OM, Dennahy IS, Mountz NC, Wilschrey L, Oezcelik A. Impact of sex on the outcomes of deceased donor liver transplantation. *World J Transplant* 2024; 14(1): 88133

URL: <https://www.wjgnet.com/2220-3230/full/v14/i1/88133.htm>

DOI: <https://dx.doi.org/10.5500/wjt.v14.i1.88133>

INTRODUCTION

Since the advent of liver transplantation in 1967, significant efforts have been made by the transplant community to refine not only the technical aspects of the procedure and medical management of patients, but also the equity of graft allocation. The current system prioritizes patients based on severity of disease, with a major landmark in its evolution being the adoption of the Model for End-stage Liver Disease (MELD; 2002) as a way to predict individual pre-transplant mortality. This was quickly recognized as a potential way to stratify patients according to medical urgency of liver transplant (LT) and has been noted to have a significant impact on waitlist mortality and number of transplants performed per year[1]. However, in recent years it has been suggested that the current graft allocation system may unintentionally bias against female candidates[2,3].

As of 2020, 60.9% of patients on the liver transplant waitlist were male, as were 63.2% of recipients[4]. Females are known to be disadvantaged due to certain MELD components, namely creatinine and sodium[2,5,6]. Females also experience longer waitlist times and higher pre-transplant mortality as well as impaired access to transplant[2,3,5,7,8]. Renal transplant data has shown that female patients are less likely to be referred for transplant and that there may be biases in their evaluation for fitness to undergo surgery, which may contribute to this[9-11]. Females are generally considered to be disadvantaged in all aspects of the process, including referrals for evaluation qualification for transplant and receipt of a matched organ[12]. MELD 3.0, which is pending adoption by UNOS, aims to reduce this discrepancy and has been shown to afford females a significantly higher chance of transplant[13].

Female liver transplant recipients demonstrate comparable, if not better, outcomes than males across a number of etiologies; however, as their access to liver transplant is limited, female patients are getting progressively sicker while waiting and risk being removed from the transplant list while their male counterparts undergo successful transplant[14-18]. It is clear that more research into sex-related differences in transplant patients is needed to identify areas for improvement. Elucidation of these differences may help to identify specific areas of focus to improve on the organ matching process, as well as the peri- and post-operative care of these patients.

The aim of this study was to utilize data from a high-volume Eurotransplant center to compare characteristics of male and female patients undergoing liver transplant and assess association between sex-specific variables with short- and long-term post-transplant outcomes.

MATERIALS AND METHODS

We performed a retrospective review of the University of Essen's transplant database, which included pre-collected and deidentified data. All adult liver transplant recipients between January 2010 and December 2020 were included. We reviewed patient baseline characteristics including sex, age, body mass index (BMI), and underlying etiology of liver disease. These were categorized as acute liver failure (ALF), alcohol-related liver disease (ALD), hepatitis B- or hepatitis C-related liver disease, non-alcoholic steatohepatitis (NASH) and primary sclerosing cholangitis (PSC). We also collected data on additional risk factors including: Smoking history, medical comorbidities such as chronic obstructive pulmonary disease, diabetes mellitus, peripheral vascular disease, coronary artery disease, diagnosis of hepatocellular carcinoma (HCC) and MELD score[19]. Waitlist times were reported in the form of days from listing until transplant. Transplant-related characteristics including donor age, high urgency transplant status, donor risk index (DRI), operative time cold and warm ischemic times (WIT), intraoperative transfusion requirements and perioperative death were reviewed[20]. Short-term postoperative outcomes were assessed in terms of both intensive care unit (ICU) stay and overall length of hospital stay in days. The comprehensive complication index (CCI) was used to assess and record the severity of postoperative complications[21]. Finally, overall survival was also recorded to a limit of 140 mo post-operatively.

Statistical analyses

The normality of all data was tested using the Shapiro-Wilk test. Non-normally distributed data were compared using the Mann-Whitney *U* test. χ^2 and Bonferroni tests were applied to draw comparisons between categorical data points. Relationships between numerical variables were assessed using Spearman's rank correlation. Mean and median survival times and overall survival rates were estimated using the Kaplan Meier method. The Log-rank test was then applied to compare overall survival rates between groups. For determination of risk factor-association with overall survival, multivariate cox proportional hazard regression analysis was performed, and hazard ratios (HRs) and 95% confidence intervals (CIs) were assigned to each independent variable. For determination of risk factors for perioperative death, a multivariate binary logistic regression model was built, and odds ratios (ORs) and 95% CIs were generated for each independent variable. For length of hospital stay, ICU stay, waitlist time, CCI, and MELD score at time of transplantation, generalized linear models were applied, and Beta coefficients and 95% CIs were derived for each independent variable. Multi-collinearity was confirmed by calculating variance inflation factor (VIF) scores. Collinear variables (VIF scores > 2) were not included in multivariate analysis to avoid problems with multi-collinearity. Descriptive statistic parameters were presented as frequency, percentage (%) and mean \pm SD, and median and inter-quartile ranges were given. All statistical analyses were performed using SPSS for Windows (version 24.0), and *P* values < 0.05 were accepted as statistically significant.

Study approval and ethical conduct

This study was deemed exempt by the Institutional Review Board of Essen University. All research referenced in this manuscript was conducted in accordance with institutional processes as well as both the Declarations of Helsinki and Istanbul.

RESULTS

Data from 779 LT recipients was collected. 518 (66.5%) patients were male, and 261 (33.5%) were female. Female patients were on average younger at the time of transplant (median 52 *vs* 54 years, *P* = 0.04) and had lower BMI (median 24.38 *vs* 26.3, *P* = 0.001) compared to males. Lab- and match-MELD scores were similar between females and males. Female patients overall had fewer comorbidities at baseline compared to male LT recipients (Table 1). Female recipients had higher incidences of acute liver failure and lower incidences of alcohol-related or viremic liver disease (*P* = 0.001). Female patients were more likely to have received an organ from a female donor, with a higher donor risk index score (1.71 *vs* 1.84), and as a high urgency offer (all *P* < 0.05). Median wait time was similar between 2 groups (Tables 1 and 2).

Regarding intra- and post-operative data, females had shorter WIT and shorter duration surgery; however, length of ICU or total stay, complication indexes and perioperative death rates were similar between males and females (Tables 1 and 2). On multivariate hazard regression analysis, higher lab-MELD score of the recipient and donor cause of death were associated with differences in long-term outcomes for female patients. A pre-operative diagnosis of HCC, increased age at time of listing, high urgency status of transplant, longer duration of surgery, and a higher number of units transfused during surgery were all associated with differences in long-term outcomes for males. Complication index grade was associated with differences in long-term outcomes for both groups (Table 3). One-, 3- and 5-year patient survival rates were similar between females and males [80.2%, 74.4% and 70% for females and 76.1%, 70.5% and 65.3% for males, (*P* = 0.12)] (Figure 1). When we performed sub-group analyses according to sex and age-related categorization, female patients younger than 50 had the best overall survival (*P* = 0.003) (Figure 2).

DISCUSSION

Overall, characteristics of our study population were similar to known demographics of transplant patients in Germany. Proportions of male and female transplant recipients (66.5% *vs* 33.5%) were consistent with what is generally seen

Table 1 Descriptive variables stratified by recipient sex, n (%)

	Male	Female	P value
	518 (66.5)	261 (33.5)	
Donor sex			0.001
Male	326 (62.9)	59 (22.6)	
Female	192 (37.1)	202 (77.4)	
Etiology			0.001
Acute liver failure	18 (3.5)	34 (13.0)	
Alcohol	149 (28.8)	46 (17.6)	
HBV/HCV	160 (30.9)	53 (20.3)	
HCC	152 (29.3)	45 (17.2)	0.001
NASH	58 (11.2)	20 (7.7)	
PSC	53 (10.2)	12 (4.6)	
Others ¹	80 (15.4)	96 (36.8)	
Milan criteria			
HCC within Milan	132 (86.8)	39 (86.7)	0.9756
HCC beyond Milan	20 (13.2)	6 (13.3)	
Comorbidities	364 (70.3)	162 (62.1)	0.021
Coronary artery disease	83 (16.0)	25 (9.6)	0.014
Diabetes	140 (27.0)	41 (15.7)	0.001
Peripheral vascular disease	5 (1.0)	2 (0.8)	0.781
COPD	75 (14.5)	33 (12.6)	0.484
Smoker	131 (25.3)	49 (18.8)	0.042
High urgency transplant	25 (4.8)	41 (15.7)	0.001
Intraoperative blood transfusion	217 (41.9)	115 (44.1)	0.563
Perioperative death	89 (17.2)	39 (14.9)	0.426

¹Hepatopulmonary syndrome, hyperoxaluria, polycystic liver disease, hepatoblastoma, Budd Chiari, neuroendocrine tumor, Wilson's disease, primary biliary cirrhosis, autoimmune hepatitis, cryptogenic. COPD: Chronic obstructive pulmonary disease; HBV: Hepatitis B virus; HCC: Hepatocellular carcinoma; HCV: Hepatitis C virus; NASH: Non-alcoholic steatohepatitis; PSC: Primary sclerosing cholangitis.

throughout the region[22]. Differences in the etiology of chronic liver disease according to sex in our study were also consistent with known predominance of ALD, viral hepatitis, NASH and PSC in males[23,24]. In our study, we report that significantly larger number of transplants for ALF were performed in female patients, which is in accordance with existing literature[25,26]. Females are known to be more susceptible to certain causes of ALF than males, including acetaminophen overdose and other drug toxicities, as well as acute-on-chronic liver failure associated with alcohol use [27-29]. It is possible that our findings represent selection bias associated with use of single-institution data; however, we suspect that our findings may demonstrate increasing incidences of alcohol-related liver disease, particularly in females [30]. This is a trend which has especially been seen in relation to the recent pandemic[31]. Unfortunately, we did not have data for the underlying etiology of ALF in our cohort. As a result, further information would be required to make solid conclusions.

The baseline characteristics of our study cohort are similar to those previously reported[15]. In our study, females were on average younger than males both at time of listing and at time of transplant. They also had significantly lower BMIs. Interestingly, although previous studies have suggested that higher BMIs in male recipients may contribute to worse survival in these patients, the impact of BMI on overall survival was not found to be significant in our multivariate analysis[32]. Male patients had significantly higher overall rates of comorbidity consistent with previous data[33]. However, we found that the comorbidity index was associated with long-term survival in both male and female transplant patients, as expected. Consideration of pre-transplant comorbidities during listing and allocation is crucial, and pre-operative risk should be managed, where possible, to maximize chances of the best possible outcome. Currently there is no specific risk calculator for transplant surgery, and the only surgical risk calculator which considers sex is the ACS Surgical risk calculator[34].

Table 2 Numerical variables stratified by recipient sex

	Male	Female	<i>P</i> value
	Median [25%-75%]	Median [25%-75%]	
Age at time of listing	54 [47-59]	51 [43-59]	0.019
BMI (kg/m ²)	26.3 [23.46-29.41]	24.38 [21.72-28.7]	0.001
Comorbidity Index	33.5 [0-63.8]	33.5 [0-58.1]	0.84
Lab MELD	15 [11-21]	16 [12-24]	0.052
Wait list time (d)	78 [23-206]	61 [7-220]	0.094
Match MELD	25 [22-28]	25 [22-28]	0.598
Age at time of transplant	54 [48-60]	52 [44-59]	0.039
Donor age	58 [49-70]	61 [46-73]	0.781
DRI	1.706 [1.432-1.962]	1.837 [1.528-2.078]	0.001
CIT (min)	450 [370-530]	445 [382-521]	0.741
WIT (min)	30 [26-36]	28 [25-32]	0.001
Duration of surgery (min)	249 [209-302]	229 [190-286]	0.001
ICU stay (d)	5 [3-10]	5 [3-9]	0.571
Hospital stay (d)	19 [15-26]	19 [15-29]	0.317

BMI: Body mass index; CIT: Cold ischemic time; DRI: Donor risk index; ICU: Intensive care unit; MELD: Model for End-stage Liver Disease; WIT: Warm ischemic time.

Table 3 Multivariate analysis of variables associated with overall survival according to recipient sex

	Male	<i>P</i> value	Female	<i>P</i> value
	HR (95%CI)		HR (95%CI)	
HCC	1.6 (1.11-2.3)	0.011	1.71 (0.81-3.64)	0.161
Age at time of listing	1.02 (1-1.04)	0.014	1.02 (0.99-1.05)	0.116
Comorbidity Index	1.04 (1.03-1.04)	0.001	1.04 (1.03-1.05)	0.001
Lab MELD	1.01 (0.99-1.04)	0.302	1.05 (1.02-1.08)	0.004
High urgency	2.87 (1.48-5.57)	0.002	0.84 (0.39-1.8)	0.656
Trauma (cause of death, donor)	1.32 (0.71-2.45)	0.384	3.05 (1.05-8.85)	0.04
Duration of surgery (min)	1 (1-1)	0.013	1 (1-1.01)	0.2
Units transfused	1.04 (1-1.09)	0.043	1.04 (0.95-1.13)	0.439

HCC: Hepatocellular carcinoma; MELD: Model for End-stage Liver Disease.

Despite recent concerns that MELD may significantly disadvantage females in terms of waitlist times and pre-transplant mortality, in our study, we saw that waiting times were similar between males and females, with a trend towards shorter waitlist times for females[2,3]. Though the female patients in our cohort did not experience longer waitlist times, the fact that this pattern has been demonstrated in a number of other recent studies is concerning. MELD is thought to underestimate the severity of liver disease and its complications in females, in part due to sex-related differences in muscle mass (female patients typically demonstrate a lower glomerular filtration rate per given creatinine level)[3,5]. In our report, female patients had higher lab-MELD scores, although this was not statistically significant. We believe this finding is still important to mention because it requires a more severe disease process to reach the same or higher MELD scores in female patients as male patients. This may be reflected in the increased number of females receiving high-urgency transplants as compared to males in our study, which is almost double that of similar database studies[35]. High-urgency transplants are considered to have comparable outcomes to those performed in patients who have demonstrated more stable disease[36]. However, this does not eliminate the fact that female patients are placed at higher risk of pre-transplant mortality by the current system[2]. Furthermore, in this study, lab-MELD was found to

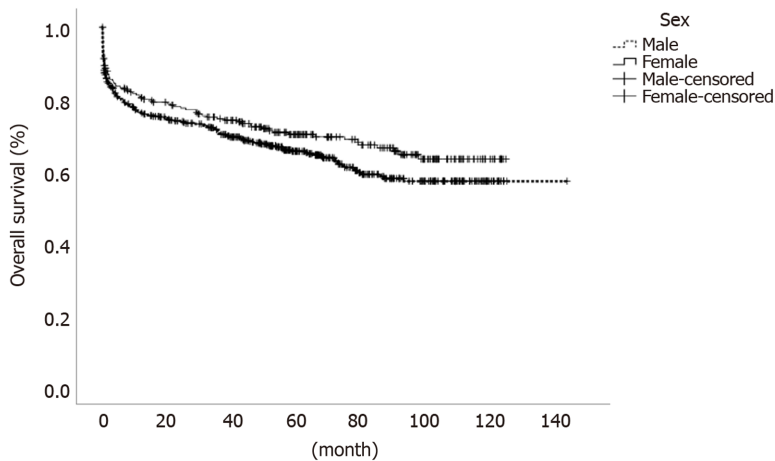


Figure 1 Overall survival of transplant recipients according to sex.

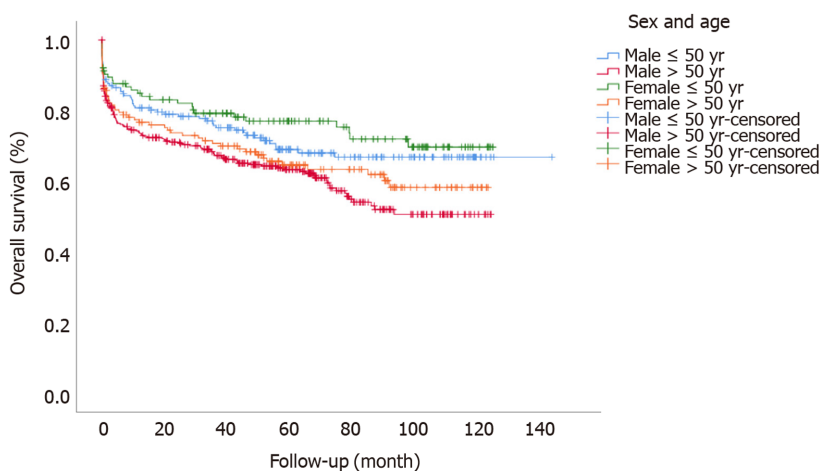


Figure 2 Overall survival of transplant recipients stratified by age and sex.

differentially impact the overall survival of female patients after liver transplant. Taken together, sex-specific adjustments to scoring as well as allocation systems are necessary.

Male patients were also statistically more likely to have HCC, which correlates with larger database studies[5]. This translates into sex bias in transplant prioritization, as exception points are awarded to patients with HCC after 6 mo on the waitlist. In our study, transplant in the setting of known HCC in male patients was found to be associated with poorer outcomes, but not for female patients. This may partially reflect the fact that male patients with HCC demonstrate poorer long-term survival independent of transplantation[37]. However, it has also been shown through a retrospective analysis of the UNOS database that females have a 25% lower recurrence rate after LT[38,39]. Unfortunately we had limited data on tumor-specific variables in our study; for instance, we did not have tumor grade, AFP levels, or downstage data. However, we report similar numbers of within and beyond Milan criteria HCC in both groups. We were also not able to analyze interactions between donor sex and HCC-specific outcomes due to the small sample size. Regardless, we believe our findings merit attention that sex-specific factors may impact LT outcomes, specifically for HCC. Further analysis is necessary regarding the impact of sex on LT after HCC.

Whether there are sex differences in post-transplant survival remains controversial based on underlying disease and/or age classification or MELD scores[35,40,41]. In this study, we report similar overall survival rates between male and female patients; however, we found significantly better survival for females younger than 50 years of age as compared to all other groups[42]. Given the retrospective nature of our study, limited sample size, and existing donor differences in both groups, we agree that prospective randomized studies with more granular data would be necessary to determine the impact of sex on LT outcomes.

It is well known that females experience more problems with donor-recipient matching than males. Part of this issue is due to concerns for large-for-size transplants in smaller female patients. Aside from just technical difficulty associated with transplanting a size-mismatched organ, it is thought that large discrepancies in this area can lead to increased risk of graft failure[43]. Donor mismatch is often cited as one of the top causes of offer denial[44]. Our study showed significantly higher DRI scores for female patients, which is likely due to limitations in which grafts are deemed appropriate for them, with the number one reason being size restrictions. Despite being transplanted with higher DRI scores, female

recipients had similar long-term outcomes compared to males; in fact, younger females had even better outcomes, similar to other reports[35,45]. Large-for-size liver transplantation is associated with elevated morbidity and mortality and represents a major limiting factor in organ matching to female transplant candidates[46]. On the other hand, the higher DRI scores seen in female recipients may also represent an institutional pattern in accepting earlier offers despite higher risk donors. This could explain why females in our study did not have longer waitlist times. It is well known that higher DRI scores are also associated with worse outcomes; however, this was not seen in our study[47,48]. This could very well be due to small sample size or the retrospective nature and inherent non-randomization of our study. Regardless, based on the results of our study, when balancing the risks of a less ideal graft in female patients, it may be important to prioritize other factors over perceived graft quality. Females have specifically been noted to have an approximately 25% increase in likelihood of pre-transplant mortality with one or more offer refusals[44]. Further assessment of the comparative impact of accepting earlier offers in female patients *vs* waiting for a better perceived match should also be performed.

Limitations of our study are largely related to the fact that this is a single-institution, retrospective study, and therefore assessment of baseline characteristics of patients is not generalizable to the wider population. However, variables identified in multivariate analysis, which are associated with worse outcomes according to sex, remain translatable to other population groups. We also have limited baseline data on our HCC patients, making it difficult to ascertain the exact impact of cancer on outcomes. Our study included a small transplant population and was underpowered to detect smaller differences that may still be clinically significant. Lastly, due to a lack of anatomical data, we are not able to make conclusions based on WIT or duration of surgery.

CONCLUSION

Overall, female and male transplant candidates demonstrate different characteristics, which have a complex interplay to influence access to liver transplant as well as transplant outcomes. Despite global improvements in the allocation and technique of liver transplantation over recent years, female patients are still significantly disadvantaged in terms of access to transplant, underscored disease severity, longer wait times, more difficulty to have proper or timely organ offers and longer hospital stay in the post-operative period as described in the literature. Herein, we demonstrate sex-based differences in disease etiology, comorbidity profile and donor characteristics. In addition, we demonstrated specific factors with differential impact on the survival of each sex after liver transplant. These should be considered as tools to improve the system, and adjustments to the allocation process could reduce the disparities between males and females. Lastly, perioperative care of females with chronic liver disease may differ from males. Thus, management and follow up of liver transplant patients should be individualized, with consideration of sex-specific variables. This may further optimize long-term outcomes, and further prospective studies are warranted.

ARTICLE HIGHLIGHTS

Research background

Female liver transplant recipients generally demonstrate comparable, if not better, outcomes than males across a number of etiologies. However, due to lack of access, female patients are getting progressively sicker while waiting and risk being removed from the transplant list while their male counterparts undergo successful transplant (14-18). Further research into sex-based differences in transplant patients is paramount in identifying areas of improvement. Defining these differences may lead to focused improvement on the organ-matching process and more specific management of peri- and post-operative care of male and female recipients.

Research motivation

Female and male transplant candidates demonstrate different characteristics, which have a complex interplay to influence access to liver transplant as well as transplant outcomes. Herein, we demonstrate sex-based differences in disease etiology, comorbidity profile and donor characteristics. In addition, we demonstrated specific factors with differential impact on the survival of each sex after liver transplant. These should be considered as tools to improve the system, and adjustments to the allocation process could reduce the disparities between males and females.

Research objectives

The aim of this study was to utilize data from a high-volume Eurotransplant center to compare characteristics of male and female patients undergoing liver transplant and assess association between sex-specific variables with short- and long-term post-transplant outcomes.

Research methods

A retrospective review of the University of Essen's transplant database was performed with collection of baseline patient characteristics, transplant-related data, and short-term outcomes. Comparisons of these data were made with Shapiro-Wilk, Mann-Whitney *U*, χ^2 and Bonferroni tests applied where appropriate. A *P* value of < 0.05 was accepted as statistically significant.

Research results

There were significant differences in baseline characteristics between male and female recipients. Female patients suffered more from acute liver failure and less from alcohol-related or viremic liver disease ($P = 0.001$). Female patients were more likely to receive an organ from a female donor, with a higher donor risk index score, and as a high urgency offer (all $P < 0.05$). On multivariate hazard regression analysis, patient lab-MELD score and donor cause of death were associated with differences in long-term outcomes for females. A pre-operative diagnosis of hepatocellular carcinoma, increased age at time of listing, high urgency status of transplant, duration of surgery, and higher number of units transfused during surgery were all associated with differences in long-term outcomes for males.

Research conclusions

Through this retrospective review, we have demonstrated sex-based differences in disease etiology, comorbidity profile and donor characteristics as well as specific factors with differential impact on the survival of each sex after liver transplant. These should be considered as tools to improve the system, and adjustments to the allocation process could reduce the disparities between males and females. Lastly, perioperative care of females with chronic liver disease may differ from males. Thus, management and follow up of liver transplant patients should be individualized, with consideration of sex-specific variables.

Research perspectives

Further research should aim to focus to optimize long-term outcomes between male and female liver transplant recipients.

ACKNOWLEDGEMENTS

Assistance with the study: Authors acknowledge statistical analysis by Seval Kul, PhD. Presentation: This study was presented at the International Liver Transplantation Society (ILTS) Meeting, 2023, and at the American Transplant Congress (ATC) Meeting, 2023.

FOOTNOTES

Author contributions: All authors contributed equally to this study.

Institutional review board statement: This study was deemed exempt by the Institutional Review Board of Essen University. All research referenced in this manuscript was conducted in accordance with institutional processes as well as both the Declarations of Helsinki and Istanbul.

Informed consent statement: As explained within the manuscript and document answering the reviewers directly, this study was deemed exempt by the Institutional Review Board of Essen University. Thus, no signed informed consent documents or IRB forms were needed to be obtained.

Conflict-of-interest statement: None of the authors have conflicts of interest.

Data sharing statement: Further data available from the corresponding author at dr.oyaandacoglu@gmail.com.

Open-Access: This article is an open-access article that was selected by an in-house editor and fully peer-reviewed by external reviewers. It is distributed in accordance with the Creative Commons Attribution NonCommercial (CC BY-NC 4.0) license, which permits others to distribute, remix, adapt, build upon this work non-commercially, and license their derivative works on different terms, provided the original work is properly cited and the use is non-commercial. See: <https://creativecommons.org/licenses/by-nc/4.0/>

Country/Territory of origin: United States

ORCID number: Oya M Andacoglu 0000-0001-5777-0266; Arzu Oezcelik 0000-0002-8353-9532.

S-Editor: Liu JH

L-Editor: A

P-Editor: Liu JH

REFERENCES

- 1 Bernardi M, Gitto S, Biselli M. The MELD score in patients awaiting liver transplant: strengths and weaknesses. *J Hepatol* 2011; **54**: 1297-1306 [PMID: 21145851 DOI: 10.1016/j.jhep.2010.11.008]
- 2 Moylan CA, Brady CW, Johnson JL, Smith AD, Tuttle-Newhall JE, Muir AJ. Disparities in liver transplantation before and after introduction

- of the MELD score. *JAMA* 2008; **300**: 2371-2378 [PMID: 19033587 DOI: 10.1001/jama.2008.720]
- 3 **Myers RP**, Shaheen AA, Aspinall AI, Quinn RR, Burak KW. Gender, renal function, and outcomes on the liver transplant waiting list: assessment of revised MELD including estimated glomerular filtration rate. *J Hepatol* 2011; **54**: 462-470 [PMID: 21109324 DOI: 10.1016/j.jhep.2010.07.015]
 - 4 **Kasiske BL**, Lentine KL, Ahn Y, Skeans MA, Eberhard T, Folken C, Wainright J, Larkin L, Nystedt C. OPTN/SRTR 2020 Annual Data Report: Living Donor Collective. *Am J Transplant* 2022; **22** Suppl 2: 553-586 [PMID: 35266611 DOI: 10.1111/ajt.16983]
 - 5 **Allen AM**, Heimbach JK, Larson JJ, Mara KC, Kim WR, Kamath PS, Therneau TM. Reduced Access to Liver Transplantation in Women: Role of Height, MELD Exception Scores, and Renal Function Underestimation. *Transplantation* 2018; **102**: 1710-1716 [PMID: 29620614 DOI: 10.1097/TP.0000000000002196]
 - 6 **Sawinski D**, Lai JC, Pinney S, Gray AL, Jackson AM, Stewart D, Levine DJ, Locke JE, Pomposelli JJ, Hartwig MG, Hall SA, Dadhania DM, Cogswell R, Perez RV, Schold JD, Turgeon NA, Kobashigawa J, Kukreja J, Magee JC, Friedewald J, Gill JS, Loo G, Heimbach JK, Verna EC, Walsh MN, Terrault N, Testa G, Diamond JM, Reese PP, Brown K, Orloff S, Farr MA, Olthoff KM, Siegler M, Ascher N, Feng S, Kaplan B, Pomfret E. Addressing sex-based disparities in solid organ transplantation in the United States - a conference report. *Am J Transplant* 2023; **23**: 316-325 [PMID: 36906294 DOI: 10.1016/j.ajt.2022.11.008]
 - 7 **Bryce CL**, Angus DC, Arnold RM, Chang CC, Farrell MH, Manzarbeitia C, Marino IR, Roberts MS. Sociodemographic differences in early access to liver transplantation services. *Am J Transplant* 2009; **9**: 2092-2101 [PMID: 19645706 DOI: 10.1111/j.1600-6143.2009.02737.x]
 - 8 **Olorunfoba OO**, Moylan CA. Gender-based disparities in access to and outcomes of liver transplantation. *World J Hepatol* 2015; **7**: 460-467 [PMID: 25848470 DOI: 10.4254/wjh.v7.i3.460]
 - 9 **Thamer M**, Hwang W, Fink NE, Sadler JH, Bass EB, Levey AS, Brookmeyer R, Powe NR; CHOICE Study. Choices for Healthy Outcomes in Caring for ESRD. U.S. nephrologists' attitudes towards renal transplantation: results from a national survey. *Transplantation* 2001; **71**: 281-288 [PMID: 11213074 DOI: 10.1097/00007890-200101270-00020]
 - 10 **Ojo A**, Port FK. Influence of race and gender on related donor renal transplantation rates. *Am J Kidney Dis* 1993; **22**: 835-841 [PMID: 8250030 DOI: 10.1016/s0272-6386(12)70343-8]
 - 11 **Kucirka LM**, Grams ME, Balhara KS, Jaar BG, Segev DL. Disparities in provision of transplant information affect access to kidney transplantation. *Am J Transplant* 2012; **12**: 351-357 [PMID: 22151011 DOI: 10.1111/j.1600-6143.2011.03865.x]
 - 12 **Kefalakes H**. Women Are Disadvantaged During Deceased Donor Liver Transplant Allocation: Strategies to Overcome Inequities. *Gastroenterology* 2022; **162**: 2110-2111 [PMID: 35346649 DOI: 10.1053/j.gastro.2022.03.030]
 - 13 **Kim WR**, Mannalithara A, Heimbach JK, Kamath PS, Asrani SK, Biggins SW, Wood NL, Gentry SE, Kwong AJ. MELD 3.0: The Model for End-Stage Liver Disease Updated for the Modern Era. *Gastroenterology* 2021; **161**: 1887-1895.e4 [PMID: 34481845 DOI: 10.1053/j.gastro.2021.08.050]
 - 14 **Chauhan M**, Zhang T, Thuluvath PJ. Gender Differences in Liver Transplantation Outcomes in Polycystic Liver Disease. *Dig Dis Sci* 2022; **67**: 3445-3454 [PMID: 34191186 DOI: 10.1007/s10620-021-07125-9]
 - 15 **Matsuoka L**, Izzy M, Feurer ID, Rega SA, Ziogas IA, Alexopoulos SP. Sex and Gender Disparities in Pretransplant Characteristics and Relationships with Postoperative Outcomes in Liver Transplant Recipients with Alcoholic Liver Disease. *Exp Clin Transplant* 2020; **18**: 701-706 [PMID: 32552631 DOI: 10.6002/ect.2020.0063]
 - 16 **Berenguer M**, Di Maira T, Baumann U, Mirza DF, Heneghan MA, Klempnauer JL, Bennet W, Ericzon BG, Line PD, Lodge PA, Zieniewicz K, Watson CJE, Metselaar HJ, Adam R, Karam V, Aguilera V; all the other contributing centers (www. eltr.org) and the European Liver and Intestine Transplant Association (ELITA). Characteristics, Trends, and Outcomes of Liver Transplantation for Primary Sclerosing Cholangitis in Female Versus Male Patients: An Analysis From the European Liver Transplant Registry. *Transplantation* 2021; **105**: 2255-2262 [PMID: 33196626 DOI: 10.1097/TP.0000000000003542]
 - 17 **Rubin JB**, Cullaro G, Ge J, Lai JC. Women who undergo liver transplant have longer length of stay post-transplant compared with men. *Liver Int* 2020; **40**: 1725-1735 [PMID: 32412164 DOI: 10.1111/liv.14512]
 - 18 **Mindikoglu AL**, Regev A, Seliger SL, Magder LS. Gender disparity in liver transplant waiting-list mortality: the importance of kidney function. *Liver Transpl* 2010; **16**: 1147-1157 [PMID: 20879013 DOI: 10.1002/lt.22121]
 - 19 **Wiesner R**, Edwards E, Freeman R, Harper A, Kim R, Kamath P, Kremers W, Lake J, Howard T, Merion RM, Wolfe RA, Krom R; United Network for Organ Sharing Liver Disease Severity Score Committee. Model for end-stage liver disease (MELD) and allocation of donor livers. *Gastroenterology* 2003; **124**: 91-96 [PMID: 12512033 DOI: 10.1053/gast.2003.50016]
 - 20 **Feng S**, Goodrich NP, Bragg-Gresham JL, Dykstra DM, Punch JD, DeRoy MA, Greenstein SM, Merion RM. Characteristics associated with liver graft failure: the concept of a donor risk index. *Am J Transplant* 2006; **6**: 783-790 [PMID: 16539636 DOI: 10.1111/j.1600-6143.2006.01242.x]
 - 21 **Slankamenac K**, Graf R, Barkun J, Puhan MA, Clavien PA. The comprehensive complication index: a novel continuous scale to measure surgical morbidity. *Ann Surg* 2013; **258**: 1-7 [PMID: 23728278 DOI: 10.1097/SLA.0b013e318296c732]
 - 22 **Loosen SH**, Bock HH, Hellmich M, Knoefel WT, Trautwein C, Keitel V, Bode JG, Neumann UP, Luedde T. Hospital Mortality and Current Trends in Liver Transplantation in Germany—a Systematic Analysis of Standardized Hospital Discharge Data, 2008–2017. *Dtsch Arztebl Int* 2021; **118**: 497-502 [PMID: 33888199 DOI: 10.3238/arztebl.m2021.0210]
 - 23 **Rodríguez-Castro KI**, De Martin E, Gambato M, Lazzaro S, Villa E, Burra P. Female gender in the setting of liver transplantation. *World J Transplant* 2014; **4**: 229-242 [PMID: 25540733 DOI: 10.5500/wjt.v4.i4.229]
 - 24 **Invernizzi F**, Cilla M, Trapani S, Guarino M, Cossiga V, Gambato M, Morelli MC, Morisco F, Burra P, Floreani A; Special Interest Group Gender in Hepatology of the Italian Association for the Study of the Liver (AISF). Gender and Autoimmune Liver Diseases: Relevant Aspects in Clinical Practice. *J Pers Med* 2022; **12** [PMID: 35743710 DOI: 10.3390/jpm12060925]
 - 25 **Weiler N**, Schlotmann A, Schnitzbauer AA, Zeuzem S, Welker MW. The Epidemiology of Acute Liver Failure. *Dtsch Arztebl Int* 2020; **117**: 43-50 [PMID: 32036852 DOI: 10.3238/arztebl.2020.0043]
 - 26 **Karvellas CJ**, Leventhal TM, Rakela JL, et al Outcomes of patients with acute liver failure listed for liver transplantation: A multicenter prospective cohort analysis. *Liver Transpl* 2023; **29**: 318-330 [DOI: 10.1002/Lt.26563]
 - 27 **Reuben A**, Koch DG, Lee WM; Acute Liver Failure Study Group. Drug-induced acute liver failure: results of a U.S. multicenter, prospective study. *Hepatology* 2010; **52**: 2065-2076 [PMID: 20949552 DOI: 10.1002/hep.23937]
 - 28 **Guy J**, Peters MG. Liver disease in women: the influence of gender on epidemiology, natural history, and patient outcomes. *Gastroenterol*

- Hepatology* (N Y) 2013; **9**: 633-639 [PMID: 24764777]
- 29 **Singal AK**, Arora S, Wong RJ, Satapathy SK, Shah VH, Kuo YF, Kamath PS. Increasing Burden of Acute-On-Chronic Liver Failure Among Alcohol-Associated Liver Disease in the Young Population in the United States. *Am J Gastroenterol* 2020; **115**: 88-95 [PMID: 31651447 DOI: 10.14309/ajg.0000000000000411]
- 30 **Tapper EB**, Parikh ND. Mortality due to cirrhosis and liver cancer in the United States, 1999-2016: observational study. *BMJ* 2018; **362**: k2817 [PMID: 30021785 DOI: 10.1136/bmj.k2817]
- 31 **Deutsch-Link S**, Curtis B, Singal AK. Covid-19 and alcohol associated liver disease. *Dig Liver Dis* 2022; **54**: 1459-1468 [PMID: 35933291 DOI: 10.1016/j.dld.2022.07.007]
- 32 **Thuluvath PJ**, Wagennar RR, Verma S. Gender and ethnic differences in the post-liver transplant outcomes of patients with autoimmune hepatitis with acute liver failure at initial presentation: a case-control study. *Arch Med Sci* 2015; **11**: 1227-1235 [PMID: 26788084 DOI: 10.5114/aoms.2015.52736]
- 33 **Li Q**, Wang Y, Ma T, Liu X, Wang B, Wu Z, Lv Y, Wu R. Impact of cigarette smoking on early complications after liver transplantation: A single-center experience and a meta-analysis. *PLoS One* 2017; **12**: e0178570 [PMID: 28558038 DOI: 10.1371/journal.pone.0178570]
- 34 **Billimoria KY**, Liu Y, Paruch JL, Zhou L, Kmiecik TE, Ko CY, Cohen ME. Development and evaluation of the universal ACS NSQIP surgical risk calculator: a decision aid and informed consent tool for patients and surgeons. *J Am Coll Surg* 2013; **217**: 833-42.e1 [PMID: 24055383 DOI: 10.1016/j.jamcollsurg.2013.07.385]
- 35 **Mathur AK**, Schaubel DE, Zhang H, Guidinger MK, Merion RM. Disparities in liver transplantation: the association between donor quality and recipient race/ethnicity and sex. *Transplantation* 2014; **97**: 862-869 [PMID: 24345895 DOI: 10.1097/01.tp.0000438634.44461.67]
- 36 **Finkenstedt A**, Nachbaur K, Zoller H, Joannidis M, Pratschke J, Graziadei IW, Vogel W. Acute-on-chronic liver failure: excellent outcomes after liver transplantation but high mortality on the wait list. *Liver Transpl* 2013; **19**: 879-886 [PMID: 23696006 DOI: 10.1002/lt.23678]
- 37 **Dohmen K**, Shigematsu H, Irie K, Ishibashi H. Longer survival in female than male with hepatocellular carcinoma. *J Gastroenterol Hepatol* 2003; **18**: 267-272 [PMID: 12603526 DOI: 10.1046/j.1440-1746.2003.02936.x]
- 38 **Nakamura T**, Sasaki K, Kojima L, Teo R, Inaba Y, Yamamoto T, Kimura S, Dageforde LA, Yeh H, Elias N, Bozorgzadeh A, Kawai T, Markmann JF. Impact of donor sex on hepatocellular carcinoma recurrence in liver transplantation after brain death. *Clin Transplant* 2023; **37**: e14989 [PMID: 37039506 DOI: 10.1111/ctr.14989]
- 39 **Han S**, Yang JD, Sinn DH, Kim JM, Choi GS, Jung G, Ahn JH, Kim S, Ko JS, Gwak MS, Kwon CHD, Leise MD, Gwak GY, Heimbach JK, Kim GS. Risk of Post-transplant Hepatocellular Carcinoma Recurrence Is Higher in Recipients of Livers From Male Than Female Living Donors. *Ann Surg* 2018; **268**: 1043-1050 [PMID: 28628564 DOI: 10.1097/SLA.0000000000002318]
- 40 **Sarkar M**, Watt KD, Terrault N, Berenguer M. Outcomes in liver transplantation: does sex matter? *J Hepatol* 2015; **62**: 946-955 [PMID: 25433162 DOI: 10.1016/j.jhep.2014.11.023]
- 41 **Gabbay U**, Issachar A, Cohen-Naftaly M, Brown M, Nesher E. Gender specific survival rates after deceased donor liver transplantation: A retrospective cohort. *Ann Med Surg (Lond)* 2022; **79**: 103933 [PMID: 35860137 DOI: 10.1016/j.amsu.2022.103933]
- 42 **Bruns H**, Lozanovski VJ, Schultze D, Hillebrand N, Hinz U, Büchler MW, Schemmer P. Prediction of postoperative mortality in liver transplantation in the era of MELD-based liver allocation: a multivariate analysis. *PLoS One* 2014; **9**: e98782 [PMID: 24905210 DOI: 10.1371/journal.pone.0098782]
- 43 **Reyes J**, Perkins J, Kling C, Montenegro M. Size mismatch in deceased donor liver transplantation and its impact on graft survival. *Clin Transplant* 2019; **33**: e13662 [PMID: 31283049 DOI: 10.1111/ctr.13662]
- 44 **Nephew LD**, Goldberg DS, Lewis JD, Abt P, Bryan M, Forde KA. Exception Points and Body Size Contribute to Gender Disparity in Liver Transplantation. *Clin Gastroenterol Hepatol* 2017; **15**: 1286-1293.e2 [PMID: 28288834 DOI: 10.1016/j.cgh.2017.02.033]
- 45 **Nephew LD**, Serper M. Racial, Gender, and Socioeconomic Disparities in Liver Transplantation. *Liver Transpl* 2021; **27**: 900-912 [PMID: 33492795 DOI: 10.1002/lt.25996]
- 46 **Addeo P**, Noblet V, Naegel B, Bachellier P. Large-for-Size Orthotopic Liver Transplantation: a Systematic Review of Definitions, Outcomes, and Solutions. *J Gastrointest Surg* 2020; **24**: 1192-1200 [PMID: 31919740 DOI: 10.1007/s11605-019-04505-5]
- 47 **Braat AE**, Blok JJ, Putter H, Adam R, Burroughs AK, Rahmel AO, Porte RJ, Rogiers X, Ringers J; European Liver and Intestine Transplant Association (ELITA) and Eurotransplant Liver Intestine Advisory Committee (ELIAC). The Eurotransplant donor risk index in liver transplantation: ET-DRI. *Am J Transplant* 2012; **12**: 2789-2796 [PMID: 22823098 DOI: 10.1111/j.1600-6143.2012.04195.x]
- 48 **Blok JJ**, Braat AE, Adam R, Burroughs AK, Putter H, Kooreman NG, Rahmel AO, Porte RJ, Rogiers X, Ringers J; European Liver Intestine Transplant Association Eurotransplant Liver Intestine Advisory Committee; Eurotransplant Liver Intestine Advisory Committee. Validation of the donor risk index in orthotopic liver transplantation within the Eurotransplant region. *Liver Transpl* 2012; **18**: 112-119 [PMID: 21987454 DOI: 10.1002/lt.22447]



Published by **Baishideng Publishing Group Inc**
7041 Koll Center Parkway, Suite 160, Pleasanton, CA 94566, USA

Telephone: +1-925-3991568

E-mail: office@baishideng.com

Help Desk: <https://www.f6publishing.com/helpdesk>

<https://www.wjgnet.com>

